



Legal Department

American Electric Power
1 Riverside Plaza
Columbus, OH 43215-2373
AEP.com

April 3, 2024

Ms. Tanowa Troupe, Secretary
Ohio Power Siting Board
180 East Broad Street
Columbus, Ohio 43215-3793

Hector Garcia
Senior Counsel –
Regulatory Services
(614) 716-3410 (P)
hgarcia1@aep.com

**RE: Proof of Compliance with Condition
Case No. 18-0031-EL-BTX, 19-2124-EL-BTA, 23-0492-EL-BTA
Second Amendment to the Pine Ridge-Heppner 138 kV Transmission Line
Project**

Dear Ms. Troupe:

In satisfaction of Condition (3) of the Staff Report for the original filing (Case No. 18-0031-EL-BTX), AEP Ohio Transmission Company, Inc. submits this notice and attachment to inform you that the final drawings have been completed for the above-referenced Project.

If you have any questions regarding this information, please do not hesitate to contact me.

Respectfully submitted,

/s/ Hector Garcia

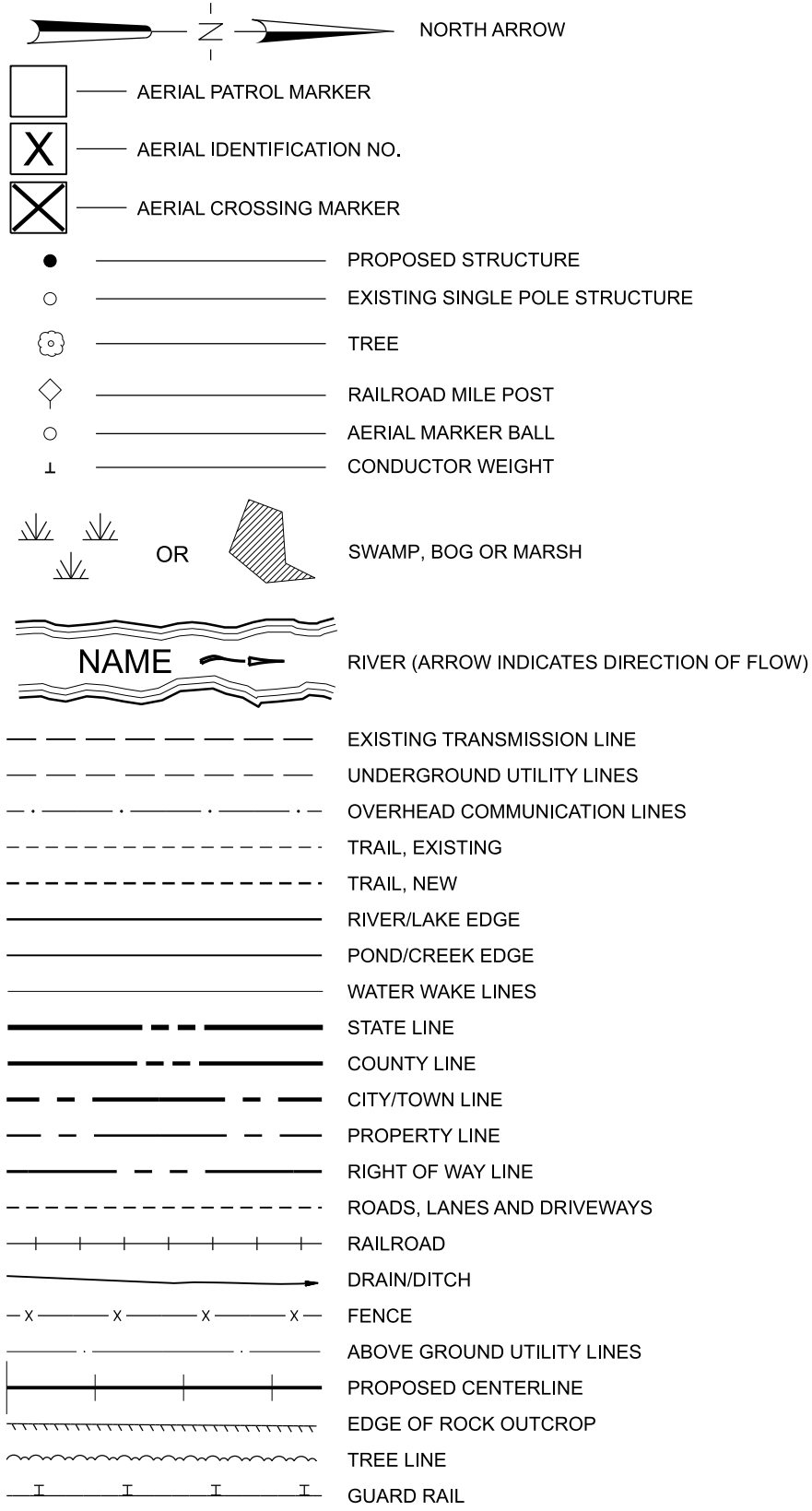
Hector Garcia (0084517), Counsel of Record
Counsel for AEP Ohio Transmission Company, Inc.

cc: John Jones, Counsel OPSB Staff
Jon Pawley, OPSB Staff

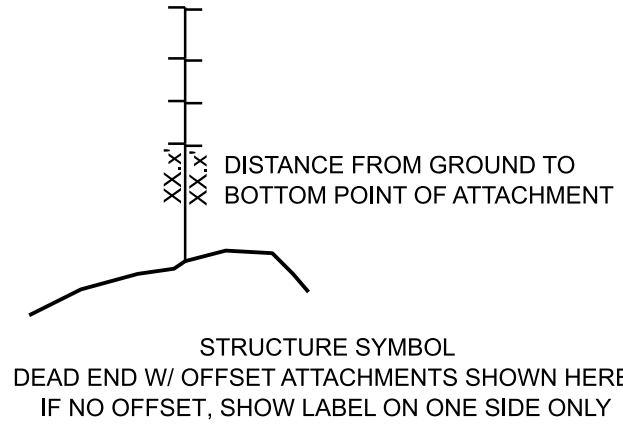
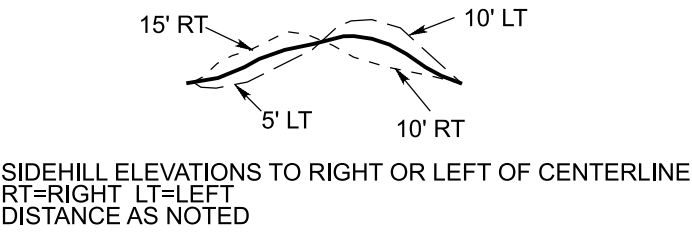
Section 16. Plan and Profile Package

GENERAL INFORMATION SHEET

PLAN & PROFILE LEGEND



+ PI INDICATES ANGLE DEFLECTION TO THE RIGHT
- PI INDICATES ANGLE DEFLECTION TO THE LEFT



STRUCTURE DATA (SINGLE POLE) EXAMPLE

10	STRUCTURE NUMBER
87+38.5	STRUCTURE LOCATION SURVEY STATION
TRANSCO	OWNERSHIP
CS17-2436	DRAWING NUMBER
104/H1/16	STRUCTURE HEIGHT/CLASS/EMBEDMENT DEPTH
GALV	MATERIAL
2014	INSTALL YEAR
NCI (50K)	INSULATOR
NORM	CONTAMINATION
RC	STRUCTURE TYPE
114-0000	FOUNDATION DRAWING
GUYED STR	GUYED STRUCTURE
40° 30' 32.479" N	LATITUDE
85° 40' 26.512" W	LONGITUDE

STRUCTURE DATA (MULTIPLE POLES) EXAMPLE

11	STRUCTURE NUMBER
96+78.1	STRUCTURE LOCATION SURVEY STATION
OPCO	OWNERSHIP
CS38-2467	DRAWING NUMBER
LT: 94'/H4/16'	LEFT STRUCTURE HEIGHT/CLASS/EMBEDMENT DEPTH
CTR: 86'/H2/14'	CENTER STRUCTURE HEIGHT/CLASS/EMBEDMENT DEPTH
RT: 94'/H4/16'	RIGHT STRUCTURE HEIGHT/CLASS/EMBEDMENT DEPTH
GALV	MATERIAL
2014	INSTALL YEAR
NCI (50K)	INSULATOR
NORM	CONTAMINATION
DE	STRUCTURE TYPE
114-0000	FOUNDATION DRAWING
GUYED STR	GUYED STRUCTURE
40° 30' 30.239" N	LATITUDE
85° 40' 38.317" W	LONGITUDE

STRUCTURE DATA (TOWER) EXAMPLE

41	STRUCTURE NUMBER
334+55.7	STRUCTURE LOCATION SURVEY STATION
APCO	OWNERSHIP
T1DBG	TOWER TYPE
140'	STRUCTURE HEIGHT
DARKENED	MATERIAL
2014	INSTALL YEAR
NCI (50K)	INSULATOR
NORM	CONTAMINATION
SUSP	STRUCTURE TYPE
POINTED	ARMS
CONC PIER	FOUNDATION TYPE
25' BODY	BODY EXTENSION
4-20' LEGS	LEG EXTENSION
40° 29' 35.399" N	LATITUDE
85° 45' 36.714" W	LONGITUDE

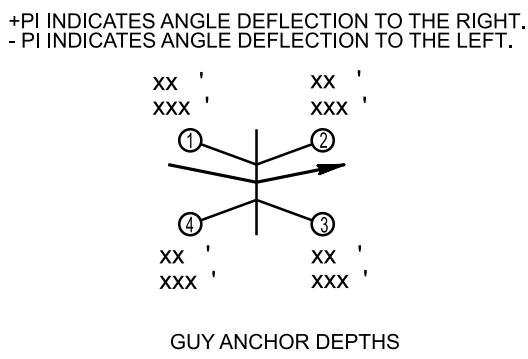


DIAGRAM FOR GUYED V STRUCTURE
SHOWING GUY LEADS AND GUY LENGTHS

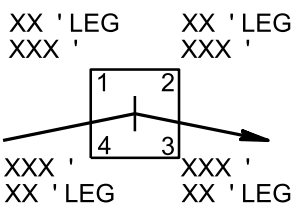


DIAGRAM FOR SELF SUPPORTING TOWERS
SHOWING LEG LENGTHS AND EXCAVATION AMOUNTS

LINE DATA TABLE

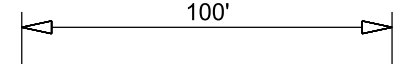
LENGTH OF LINE: 18,375 FEET, 3.5 MILES							
OVERHEAD SHIELD WIRE AND/OR OVERHEAD COMMUNICATION WIRE							
STRUCTURE RANGE	WIRE LOCATION	SIZE	NESC HEAVY LOADING	RULING SPAN (FT)	DISPLAY TEMP (°F)	OWNER	EQUIPMENT NUMBER
160 TO 162	LEFT	(1) DNO-12739 WITH 144 FIBERS	6260	667	0°	AEP OHIO TRANSOCO	TLN380-OHI55
160 TO 162	RIGHT	(1) 7#10 ALUMOWELD	3100	667	0°	AEP OHIO TRANSOCO	TLN380-OHI55
162 TO 164	LEFT	(1) DNO-12739 WITH 144 FIBERS	7280	1165	0°	AEP OHIO TRANSOCO	TLN380-OHI55
162 TO 164	RIGHT	(1) 7#10 ALUMOWELD	3910	1168	0°	AEP OHIO TRANSOCO	TLN380-OHI55
164 TO 165	LEFT	(1) DNO-12739 WITH 144 FIBERS	4950	248	0°	AEP OHIO TRANSOCO	TLN380-OHI55
164 TO 165	RIGHT	(1) 7#10 ALUMOWELD	2070	251	0°	AEP OHIO TRANSOCO	TLN380-OHI55
165 TO 166	LEFT	(1) DNO-12739 WITH 144 FIBERS	7790	1817	0°	AEP OHIO TRANSOCO	TLN380-OHI55
165 TO 166	RIGHT	(1) 7#8 ALUMOWELD	5230	1817	0°	AEP OHIO TRANSOCO	TLN380-OHI55
166 TO 172	LEFT	(1) DNO-12739 WITH 144 FIBERS	7280	884	0°	AEP OHIO TRANSOCO	TLN380-OHI55
166 TO 172	RIGHT	(1) 7#10 ALUMOWELD	3540	883	0°	AEP OHIO TRANSOCO	TLN380-OHI55
172 TO 183	LEFT	(1) DNO-12739 WITH 144 FIBERS	7280	905	0°	AEP OHIO TRANSOCO	TLN380-OHI55
172 TO 183	RIGHT	(1) 7#10 ALUMOWELD	3650	905	0°	AEP OHIO TRANSOCO	TLN380-OHI55
183 TO HEPPEPNER STATION	LEFT	(1) 7#10 ALUMOWELD	1210	207	0°	AEP OHIO TRANSOCO	TLN380-OHI55
183 TO HEPPEPNER STATION	RIGHT	(1) 7#10 ALUMOWELD	1330	221	0°	AEP OHIO TRANSOCO	TLN380-OHI55
OVERHEAD CONDUCTORS							
STRUCTURE RANGE	CIRCUIT LOCATION	SIZE	NESC HEAVY LOADING	RULING SPAN	MOT (°F)	OWNER	EQUIPMENT NUMBER
160 TO 162		(3) 1033.5 KCMIL ACSR 54/7 CURLEW	11240	666	302"	AEP OHIO TRANSOCO	TLN380-OHI55
162 TO 164		(3) 1033.5 KCMIL ACSR 54/7 CURLEW	11060	1166	302"	AEP OHIO TRANSOCO	TLN380-OHI55
164 TO 165		(3) 1033.5 KCMIL ACSR 54/7 CURLEW	9340	249	302"	AEP OHIO TRANSOCO	TLN380-OHI55
165 TO 166		(3) 1033.5 KCMIL ACSR 54/7 CURLEW	10720	1819	302"	AEP OHIO TRANSOCO	TLN380-OHI55
166 TO 172		(3) 1033.5 KCMIL ACSR 54/7 CURLEW	10970	883	302"	AEP OHIO TRANSOCO	TLN380-OHI55
172 TO 183		(3) 1033.5 KCMIL ACSR 54/7 CURLEW	11020	905	302"	AEP OHIO TRANSOCO	TLN380-OHI55
183 TO HEPPEPNER STATION		(3) 1033.5 KCMIL ACSR 54/7 CURLEW	3930	214	302"	AEP OHIO TRANSOCO	TLN380-OHI55

REFER TO P&P FOR STRUCTURE OWNERSHIP

GENERAL NOTES

COORDINATE SYSTEM:
NAD83 STATE PLANE, OHIO SOUTH NAD83:3402 (US FEET)

UTILITY PROTECTION SERVICE:
CONTACT THE UTILITIES PROTECTION SERVICE, 8-1-1 AT LEAST 48 HOURS BUT NO MORE
THAN 10 WORKING DAYS (EXCLUDING WEEKENDS AND LEGAL HOLIDAYS) BEFORE
BEGINNING ANY DIGGING PROJECT.



THIS SYMBOL WILL BE SHOWN AT THE TOP OF THE SHEET BELOW THE CONDUCTOR INFORMATION AND WILL INDICATE WHICH SECTIONS AND CONDUCTOR SPANS EXCEED 100 FEET CLEARANCE FROM THE MOT CURVE TO THE HIGH SIDE HILL OR TO THE PROFILE WHEN THERE IS NO SIDE HILL.

SUPPLEMENTAL INFORMATION

SUPPLEMENTAL INFORMATION				
STRUCTURE	OPGW SPlice BOX LOCATION	PCS ANTENNA LOCATION	CONDUCTOR SPlice LOCATION (AHEAD SPAN)	OWNER
166	X			AEP OHIO TRANSOCO
172	X			AEP OHIO TRANSOCO
183	X			AEP OHIO TRANSOCO

REV	REVISION DESCRIPTION	DATE	BY
A	ISSUED FOR BID	1/10/2024	MESA



MESA ASSOCIATES, INC.
ENGINEERS AND CONSULTANTS
620 MARKET STREET, STE 200 CHATTANOOGA, TN 37402 (423) 424-7300

REGISTRATION No.: 01692

ENG BY: MJS

CHKD BY: MJS

DRN BY: ARF

APP BY: WGF

DATE: 10/17/2022

R/W MAP N/A

"THIS DRAWING IS THE PROPERTY OF AMERICAN ELECTRIC POWER AND IS LOANED UPON CONDITION THAT IT IS NOT TO BE COPIED OR REPRODUCED, IN WHOLE OR IN PART, OR USED FOR FURNISHING INFORMATION TO ANY PERSON WITHOUT THE WRITTEN CONSENT OF AMERICAN ELECTRIC POWER, OR FOR ANY PURPOSE DETRIMENTAL TO THEIR INTEREST, AND IS TO BE RETURNED UPON REQUEST"

EQUIP: TLN380:OH155

DWG: OH155S02C

SHEET: 20	REV: A
-----------	--------

AEP OHIO TRANSCO
ROSS - HEPPNER 138KV LINE
(PINE RIDGE - HEPPNER)

LEGEND, LINE DATA TABLE, GENERAL NOTES, & SUPPLEMENTAL INFO.

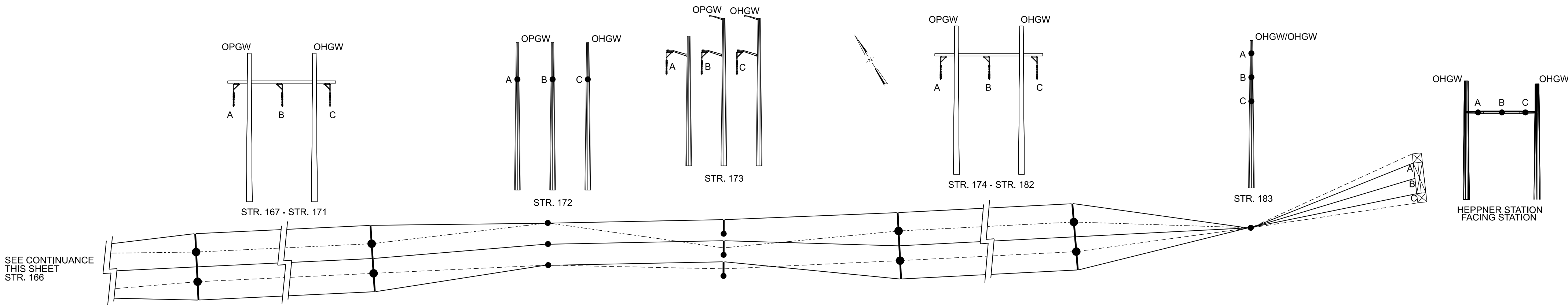
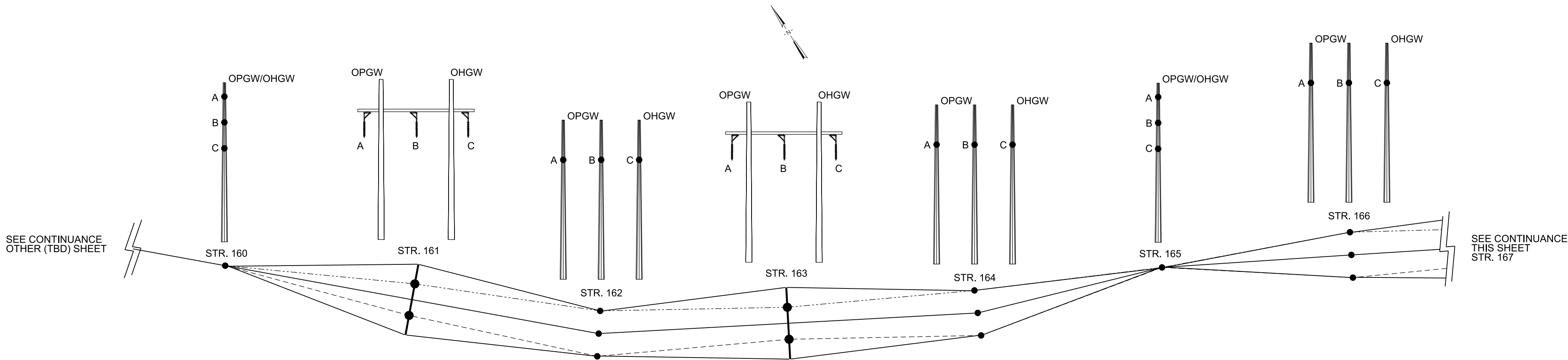
ISSUE FOR BID. PRELIMINARY INFORMATION

GENERAL INFORMATION SHEET

PHASING DIAGRAM

PHASING TO BE VERIFIED BY FIELD PERSONNEL

- NOTES:
1. THE PHASING DIAGRAM IS ORIENTED LOOKING AHEAD TOWARDS INCREASING STRUCTURE NUMBERS UNLESS OTHERWISE NOTED.
 2. PHASING SHOWN APPLIES ONLY TO AEP FACILITIES.
 3. OWNERSHIP IS NOT REFLECTED IN THIS DIAGRAM.



XX = SHIELD (SW/OPGW)
X = CONDUCTOR PHASING (A,B, C)

REGULAR SHIELD

OPGW

CONDUCTOR

ISSUE FOR BID. PRELIMINARY
INFORMATION

REV	REVISION DESCRIPTION	DATE	BY
A	ISSUED FOR BID	1/10/2024	MESA

--	--



MESA ASSOCIATES, INC.
200 MARKET STREET, STE 200 CHATTANOOGA, TN 37402-4024-1200

REGISTRATION No.: 01692

ENG BY:	MJS	CHKD BY:	MJS
DRN BY:	ARP	APP BY:	WGF
DATE:	10/17/2023	R/W MAP NO:	N/A

"THIS DRAWING IS THE PROPERTY OF AMERICAN ELECTRIC POWER AND IS LOANED UPON CONDITION THAT IT IS NOT TO BE COPIED OR REPRODUCED, IN WHOLE OR IN PART, OR USED FOR FURNISHING INFORMATION TO ANY PERSON WITHOUT THE WRITTEN CONSENT OF AMERICAN ELECTRIC POWER, OR FOR ANY PURPOSE DETRIMENTAL TO THEIR INTEREST, AND IS TO BE RETURNED UPON REQUEST."

AEP OHIO TRANSCO
ROSS - HEPPNER 138KV LINE
(PINE RIDGE - HEPPNER)
PHASING DIAGRAM

EQUIP: TLN380:OH155

DWG: OH155S02D

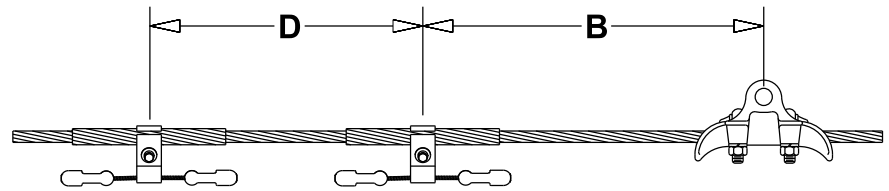
SHEET: 2D REV: A

GENERAL INFORMATION SHEET

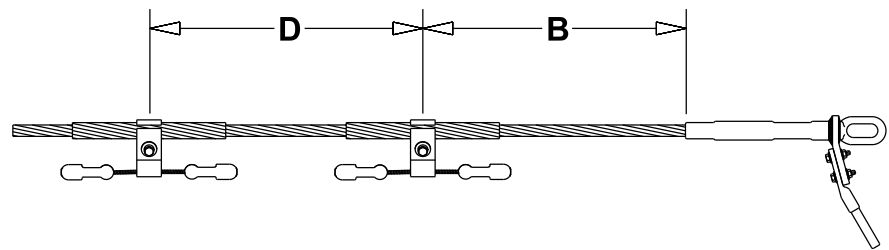
CONDUCTOR DAMPER INFORMATION

DAMPER PLACEMENT DRAWINGS
REFER TO THESE DRAWINGS WHEN LOOKING AT THE DAMPER PLACEMENT TABLE.
DAMPER WILL BE PLACED ON EACH WIRE AT EACH LOCATION.

SPAN BEHIND DWGS

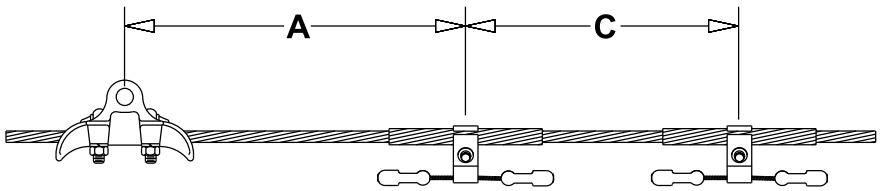


DETAIL 1

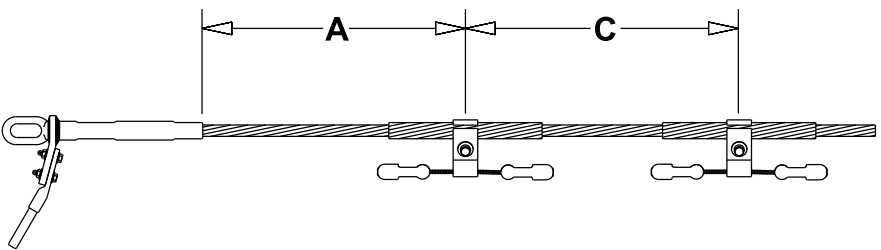


DETAIL 2

SPAN AHEAD DWGS



DETAIL 3



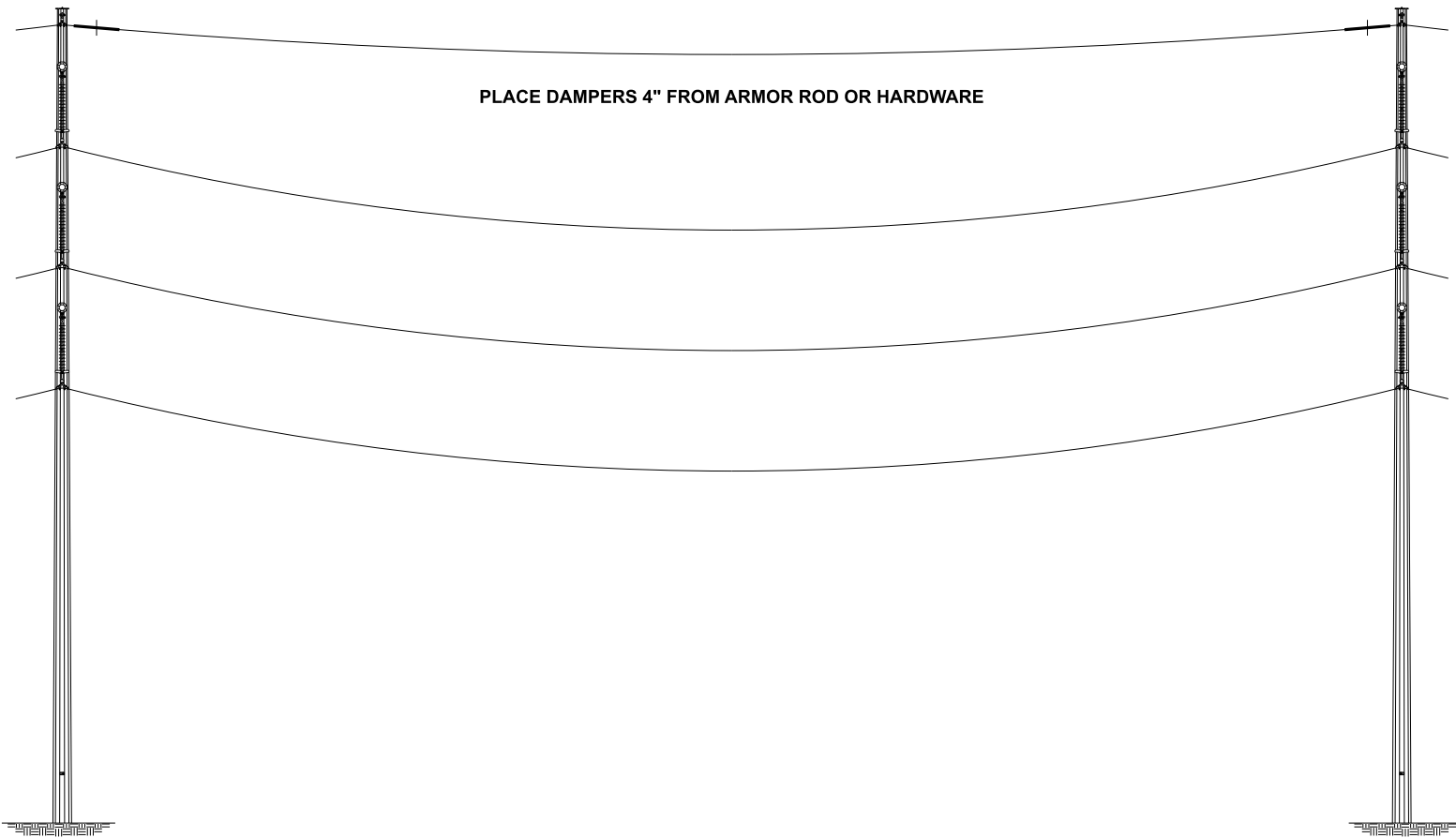
DETAIL 4

CONDUCTOR DAMPER PLACEMENT TABLE

DAMPER PLACEMENT (INCH)				DETAIL	STRUCTURE TYPE (S or D)	VENDOR	VENDOR PART NUMBER				OWNER
SPAN BEHIND	STRUCTURE	SPAN AHEAD					D	B	A	C	
					D	PLP					AEP OHIO TRANSCO
	34	160			1,3	S	PLP		VSD-4061	VSD-4061	AEP OHIO TRANSCO
		162				D	PLP				AEP OHIO TRANSCO
	33	163	33		1,3	S	PLP		VSD-4061	VSD-4061	AEP OHIO TRANSCO
		164				D	PLP				AEP OHIO TRANSCO
24	30	165			2,4	D	PLP	VSD-4032	VSD-4032		AEP OHIO TRANSCO
		166				D	PLP				AEP OHIO TRANSCO
	33	167	33		1,3	S	PLP		VSD-4061	VSD-4061	AEP OHIO TRANSCO
		168	33		1,3	S	PLP		VSD-4061		AEP OHIO TRANSCO
		169	33		1,3	S	PLP		VSD-4061		AEP OHIO TRANSCO
		170	33		1,3	S	PLP		VSD-4061		AEP OHIO TRANSCO
		171	33		1,3	S	PLP		VSD-4061		AEP OHIO TRANSCO
		172				D	PLP				AEP OHIO TRANSCO
	33	173	33		1,3	S	PLP		VSD-4061	VSD-4061	AEP OHIO TRANSCO
		174	33		1,3	S	PLP		VSD-4061		AEP OHIO TRANSCO
		175	33		1,3	S	PLP		VSD-4061		AEP OHIO TRANSCO
		176	33		1,3	S	PLP		VSD-4061		AEP OHIO TRANSCO
		177	33		1,3	S	PLP		VSD-4061		AEP OHIO TRANSCO
		178	33		1,3	S	PLP		VSD-4061		AEP OHIO TRANSCO
		179	33		1,3	S	PLP		VSD-4061		AEP OHIO TRANSCO
		180	33		1,3	S	PLP		VSD-4061		AEP OHIO TRANSCO
		181	33		1,3	S	PLP		VSD-4061		AEP OHIO TRANSCO
		182	33		1,3	S	PLP		VSD-4061		AEP OHIO TRANSCO
		183				D	PLP				AEP OHIO TRANSCO
		HEPPNER STATION				D	PLP				AEP OHIO TRANSCO

CROSS REFERENCE PARTS LIST	
VENDOR	AEP CAT ID's
VSD-4032	0050643859
VSD-4061	0050643863

SHIELD WIRE DAMPER INFORMATION



CROSS REFERENCE PARTS LIST	
VENDOR	AEP CAT ID's
5050103	0500062685
5050106	0500062688



SINGLE



GROUP OF 3

NOTES:

1. SVDs MAY BE GROUPED TOGETHER IN SETS OF NO MORE THAN 3
2. SVDs MAY BE PLACED AT EITHER END OF THE SPAN OR ON BOTH ENDS
3. SVDs SHALL BE PLACED DIRECTLY ON CONDUCTOR OR SHIELD WIRE

HI MASS SPIRAL VIBRATION DAMPER TABLE (7#10 ALUMOWELD)					
STRUCTURE	LOCATION	QUANTITY IN AHEAD SPAN	VENDOR	VENDOR PART NUMBER	OWNER
160	1 SVD ON AHEAD SPAN (RIGHT)	1	PLP	5050103	AEP OHIO TRANSCO
161	1 SVD ON AHEAD SPAN (RIGHT)	1	PLP	5050103	AEP OHIO TRANSCO
162	2 SVD ON AHEAD SPAN (RIGHT)	2	PLP	5050103	AEP OHIO TRANSCO
163	1 SVD ON AHEAD SPAN (RIGHT)	1	PLP	5050103	AEP OHIO TRANSCO
164	1 SVD ON AHEAD SPAN (RIGHT)	1	PLP	5050103	AEP OHIO TRANSCO
166	2 SVD ON AHEAD SPAN (RIGHT)	2	PLP	5050103	AEP OHIO TRANSCO
167	1 SVD ON AHEAD SPAN (RIGHT)	1	PLP	5050103	AEP OHIO TRANSCO
168	1 SVD ON AHEAD SPAN (RIGHT)	1	PLP	5050103	AEP OHIO TRANSCO
169	2 SVD ON AHEAD SPAN (RIGHT)	2	PLP	5050103	AEP OHIO TRANSCO
170	1 SVD ON AHEAD SPAN (RIGHT)	1	PLP	5050103	AEP OHIO TRANSCO
171	2 SVD ON AHEAD SPAN (RIGHT)	2	PLP	5050103	AEP OHIO TRANSCO
172	2 SVD ON AHEAD SPAN (RIGHT)	2	PLP	5050103	AEP OHIO TRANSCO
173	2 SVD ON AHEAD SPAN (RIGHT)	2	PLP	5050103	AEP OHIO TRANSCO
174	1 SVD ON AHEAD SPAN (RIGHT)	1	PLP	5050103	AEP OHIO TRANSCO
175	2 SVD ON AHEAD SPAN (RIGHT)	2	PLP	5050103	AEP OHIO TRANSCO
176	1 SVD ON AHEAD SPAN (RIGHT)	1	PLP	5050103	AEP OHIO TRANSCO
177	1 SVD ON AHEAD SPAN (RIGHT)	1	PLP	5050103	AEP OHIO TRANSCO
178	2 SVD ON AHEAD SPAN (RIGHT)	2	PLP	5050103	AEP OHIO TRANSCO
179	1 SVD ON AHEAD SPAN (RIGHT)	1	PLP	5050103	AEP OHIO TRANSCO
180	2 SVD ON AHEAD SPAN (RIGHT)	2	PLP	5050103	AEP OHIO TRANSCO
181	1 SVD ON AHEAD SPAN (RIGHT)	1	PLP	5050103	AEP OHIO TRANSCO
182	1 SVD ON AHEAD SPAN (RIGHT)	1	PLP	5050103	AEP OHIO TRANSCO
183	1 SVD ON AHEAD SPAN (LEFT)	1	PLP	5050103	AEP OHIO TRANSCO
183	1 SVD ON AHEAD SPAN (RIGHT)	1	PLP	5050103	AEP OHIO TRANSCO

HI MASS SPIRAL VIBRATION DAMPER TABLE (7#10 ALUMOWELD)					
STRUCTURE	LOCATION	QUANTITY IN AHEAD SPAN	VENDOR	VENDOR PART NUMBER	OWNER
165	3 SVD ON AHEAD SPAN (RIGHT)	3	PLP	5050103	AEP OHIO TRANSCO

HI MASS SPIRAL VIBRATION DAMPER TABLE (DN0-12739 WITH 144 FIBERS)					
STRUCTURE	LOCATION	QUANTITY IN AHEAD SPAN	VENDOR	VENDOR PART NUMBER	OWNER
160	1 SVD ON AHEAD SPAN (LEFT)	1	PLP	5050106	AEP OHIO TRANSCO
161	1 SVD ON AHEAD SPAN (LEFT)	1	PLP	5050106	AEP OHIO TRANSCO
162	2 SVD ON AHEAD SPAN (LEFT)	2	PLP	5050106	AEP OHIO TRANSCO
163	1 SVD ON AHEAD SPAN (LEFT)	1	PLP	5050106	AEP OHIO TRANSCO
164	1 SVD ON AHEAD SPAN (LEFT)	1	PLP	5050106	AEP OHIO TRANSCO
165	3 SVD ON AHEAD SPAN (LEFT)	3	PLP	5050106	AEP OHIO TRANSCO
166	2 SVD ON AHEAD SPAN (LEFT)	2	PLP	5050106	AEP OHIO TRANSCO
167	1 SVD ON AHEAD SPAN (LEFT)	1	PLP	5050106	AEP OHIO TRANSCO
168	1 SVD ON AHEAD SPAN (LEFT)	1	PLP	5050106	AEP OHIO TRANSCO
169	2 SVD ON AHEAD SPAN (LEFT)	2	PLP	5050106	AEP OHIO TRANSCO
170	1 SVD ON AHEAD SPAN (LEFT)	1	PLP	5050106	AEP OHIO TRANSCO
171	2 SVD ON AHEAD SPAN (LEFT)	2	PLP	5050106	AEP OHIO TRANSCO
172	2 SVD ON AHEAD SPAN (LEFT)	2	PLP	5050106	AEP OHIO TRANSCO
173	2 SVD ON AHEAD SPAN (LEFT)	2	PLP	5050106	AEP OHIO TRANSCO
174	1 SVD ON AHEAD SPAN (LEFT)	1	PLP	5050106	AEP OHIO TRANSCO
175	2 SVD ON AHEAD SPAN (LEFT)	2	PLP	5050106	AEP OHIO TRANSCO
176	1 SVD ON AHEAD SPAN (LEFT)	1	PLP	5050106	AEP OHIO TRANSCO
177	1 SVD ON AHEAD SPAN (LEFT)	1	PLP	5050106	AEP OHIO TRANSCO
178	2 SVD ON AHEAD SPAN (LEFT)	2	PLP	5050106	AEP OHIO TRANSCO
179	1 SVD ON AHEAD SPAN (LEFT)	1	PLP	5050106	AEP OHIO TRANSCO
180	2 SVD ON AHEAD SPAN (LEFT)	2	PLP	5050106	AEP OHIO TRANSCO
181	1 SVD ON AHEAD SPAN (LEFT)	1	PLP	5050106	AEP OHIO TRANSCO
182	1 SVD ON AHEAD SPAN (LEFT)	1	PLP	5050106	AEP OHIO TRANSCO

ISSUE FOR BID. PRELIMINARY
INFORMATION

REV	REVISION DESCRIPTION	DATE	BY					ENG BY:	MJS	CHKD BY:	MJS	EQUIP: TLN380:OH155	
A	ISSUED FOR BID	1/10/2024	MESA					DRN BY:	ARP	APP BY:	WGF	DWG: OH155S02E	
								R/W MAP NO:	N/A			SHEET: 2E REV: A	



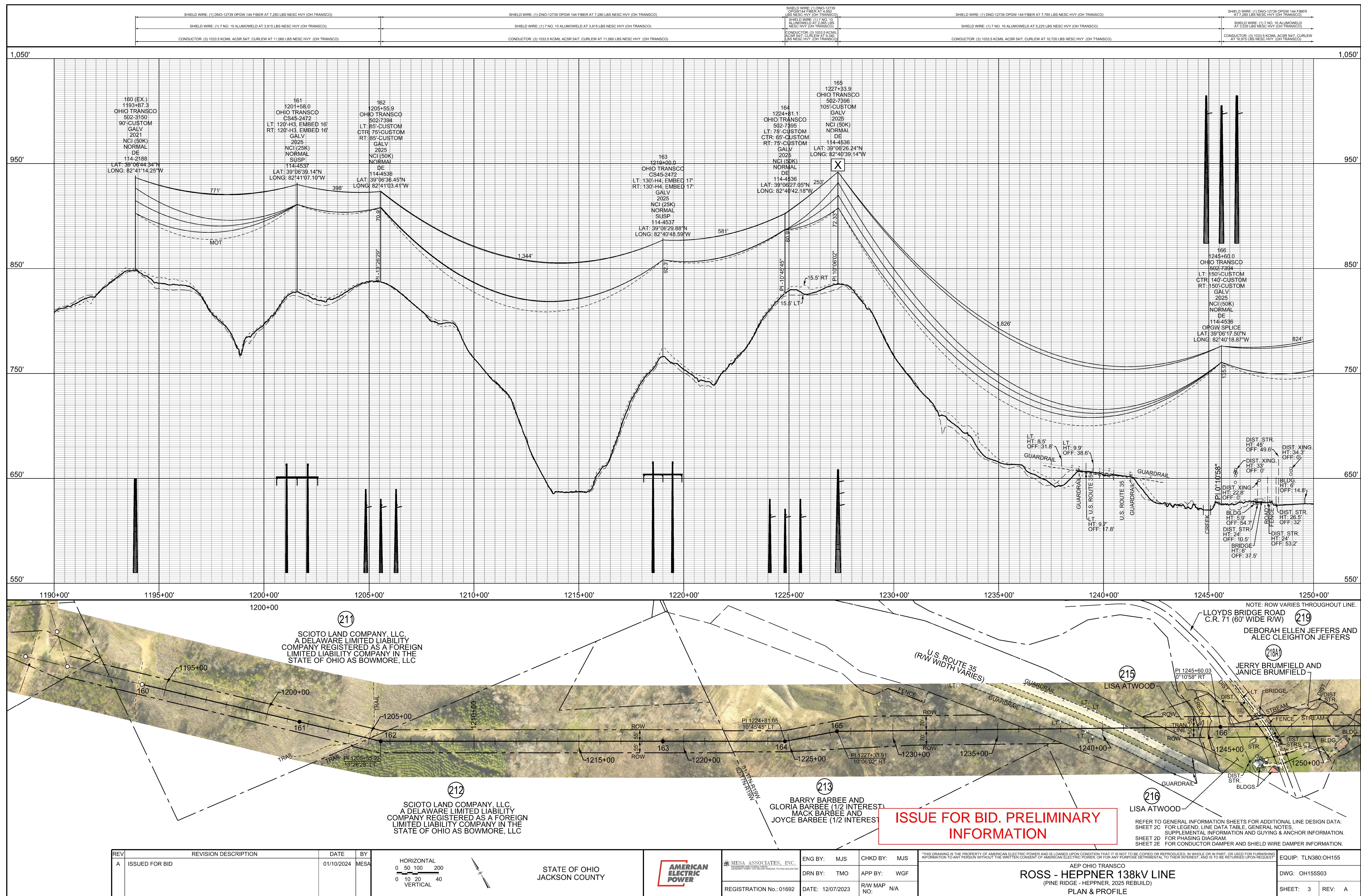
MESA ASSOCIATES, INC.
201 MARKET STREET, STE 200, CHATTANOOGA, TN 37403-4024-1200

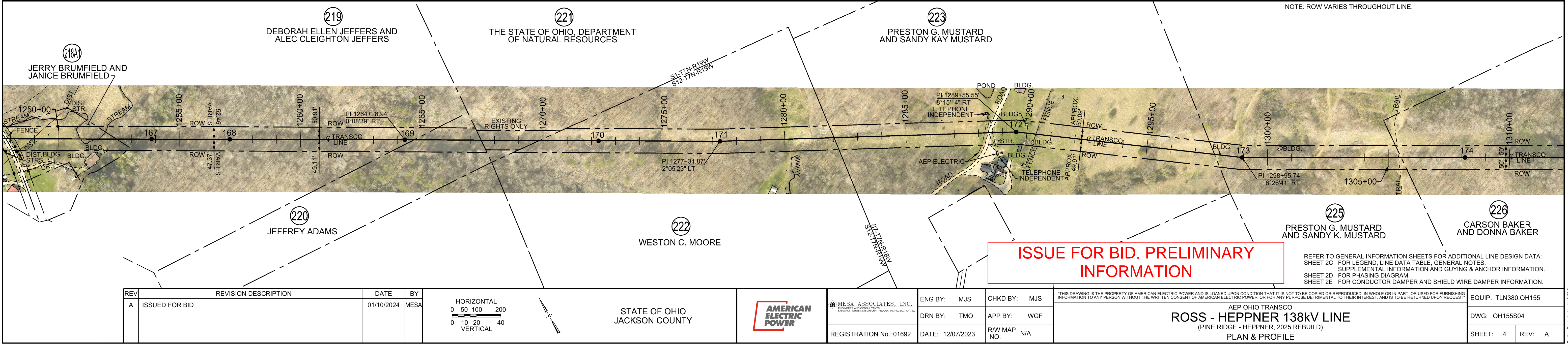
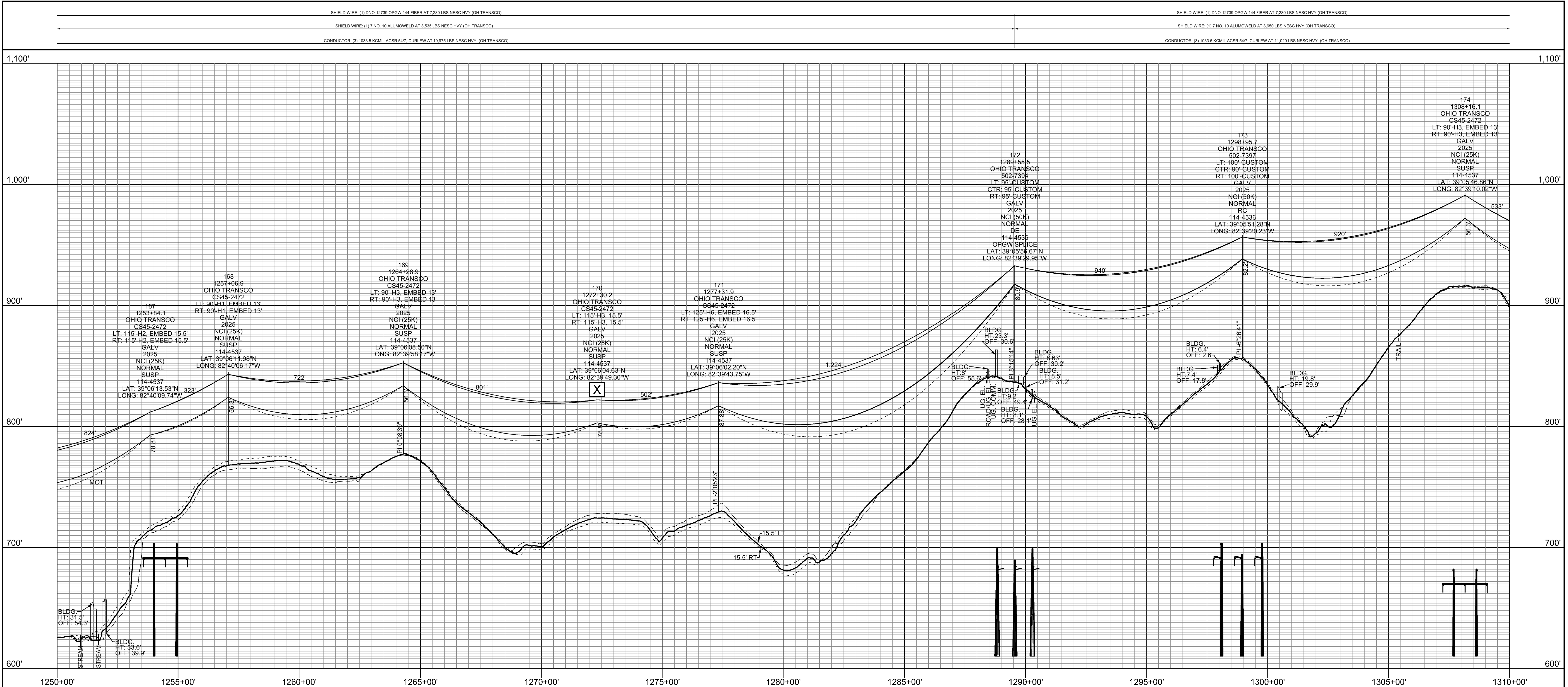
REGISTRATION No.: 01692

DATE: 10/17/2023

"THIS DRAWING IS THE PROPERTY OF AMERICAN ELECTRIC POWER AND IS LOANED UPON CONDITION THAT IT IS NOT TO BE COPIED OR REPRODUCED, IN WHOLE OR IN PART, OR USED FOR FURNISHING INFORMATION TO ANY PERSON WITHOUT THE WRITTEN CONSENT OF AMERICAN ELECTRIC POWER, OR FOR ANY PURPOSE DETRIMENTAL TO THEIR INTEREST, AND IS TO BE RETURNED UPON REQUEST"

AEP OHIO TRANSCO
ROSS - HEPPNER 138KV LINE
(PINE RIDGE - HEPPNER)
CONDUCTOR DAMPER INFORMATION & SHIELD WIRE DAMPER INFORMATION

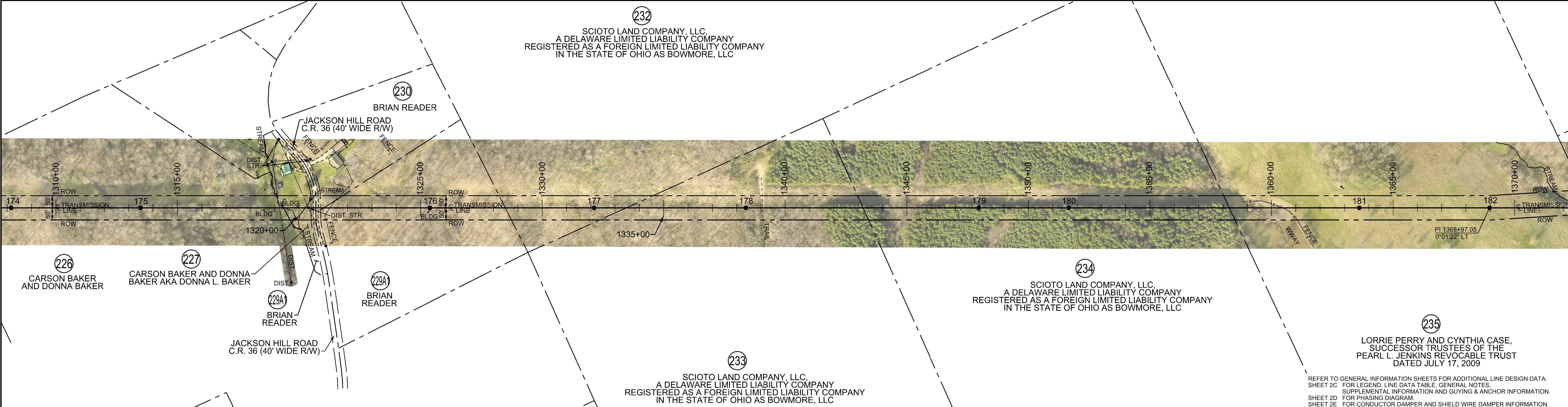
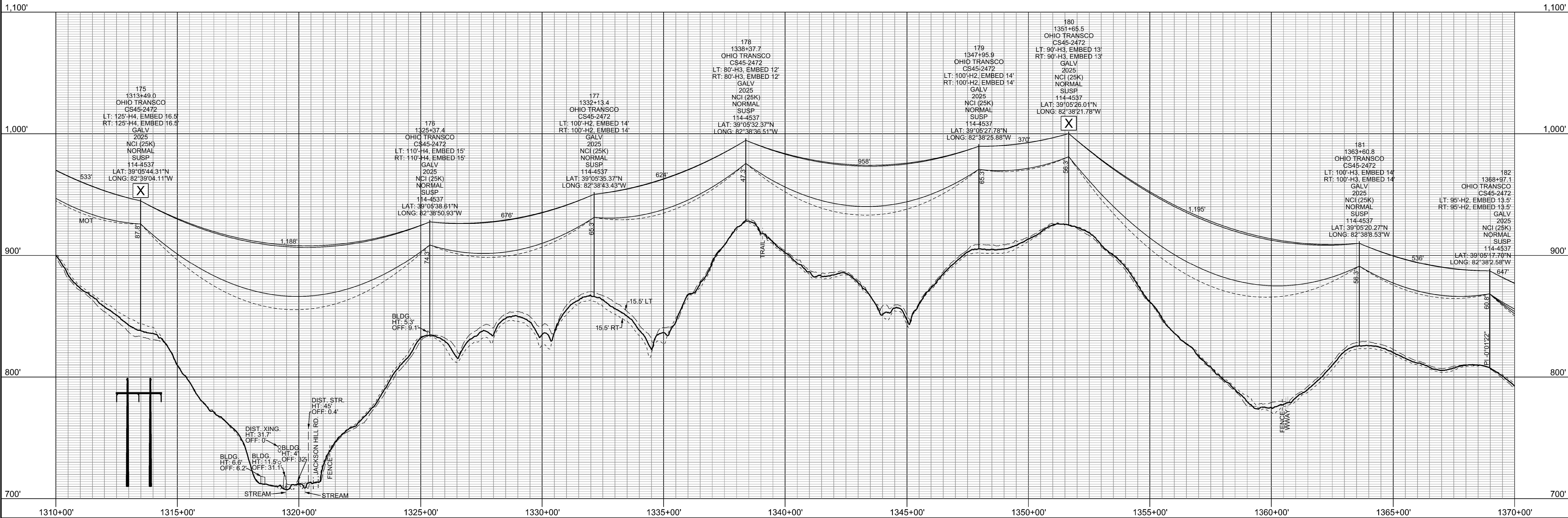




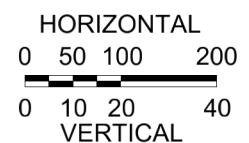
SHIELD WIRE: (1) DNO-12738 OPGW 144 FIBER AT 7,280 LBS NESG HVY (OH TRANSOCO)

SHIELD WIRE: (1) 7 NO. 10 ALUMOWELD AT 3,650 LBS NESG HVY (OH TRANSOCO)

CONDUCTOR: (3) 1033.5 KCMIL ACSR 54/7, CURLIEW AT 11,020 LBS NESG HVY (OH TRANSOCO)



REV	REVISION DESCRIPTION	DATE	BY
A	ISSUED FOR BID	01/10/2024	MESA



STATE OF OHIO
JACKSON COUNTY



MESA ASSOCIATES, INC.
10000 W. 12TH AVE., SUITE 200
DENVER, CO 80202-1200

REGISTRATION No.: 01692

ENG BY: MJS

DRN BY: TMO

DATE: 12/07/2023

CHKD BY: MJS

APP BY: WGF

R/W MAP NO.: N/A

"THIS DRAWING IS THE PROPERTY OF AMERICAN ELECTRIC POWER AND IS LOANED UPON CONDITION THAT IT IS NOT TO BE COPIED OR REPRODUCED, IN WHOLE OR IN PART, OR USED FOR FURNISHING INFORMATION TO ANY PERSON WITHOUT THE WRITTEN CONSENT OF AMERICAN ELECTRIC POWER, OR FOR ANY PURPOSE DETRIMENTAL TO THEIR INTEREST, AND IS TO BE RETURNED UPON REQUEST."

AEP OHIO TRANSOCO
ROSS - HEPPNER 138kV LINE
(PINE RIDGE - HEPPNER, 2025 REBUILD)
PLAN & PROFILE

EQUIP: TLN380:OH155

DWG: OH155S05

SHEET: 5 REV: A

REFER TO GENERAL INFORMATION SHEETS FOR ADDITIONAL LINE DESIGN DATA:
SHEET 2C FOR LEGEND, LINE DATA TABLE, GENERAL NOTES.
SHEET 2D SUPPLEMENTAL INFORMATION AND GUYING & ANCHOR INFORMATION.
SHEET 2E FOR PHASING DIAGRAM, FOR CONDUCTOR DAMPER AND SHIELD WIRE DAMPER INFORMATION.

235
LORRIE PERRY AND CYNTHIA CASE,
SUCCESSOR TRUSTEES OF THE
PEARL L. JENKINS REVOCABLE TRUST
DATED JULY 17, 2009

234
SCIOTO LAND COMPANY, LLC,
A DELAWARE LIMITED LIABILITY COMPANY
REGISTERED AS A FOREIGN LIMITED LIABILITY COMPANY
IN THE STATE OF OHIO AS BOWMORE, LLC

233
SCIOTO LAND COMPANY, LLC,
A DELAWARE LIMITED LIABILITY COMPANY
REGISTERED AS A FOREIGN LIMITED LIABILITY COMPANY
IN THE STATE OF OHIO AS BOWMORE, LLC

230
BRIAN READER

JACKSON HILL ROAD
C.R. 36 (40' WIDE R/W)

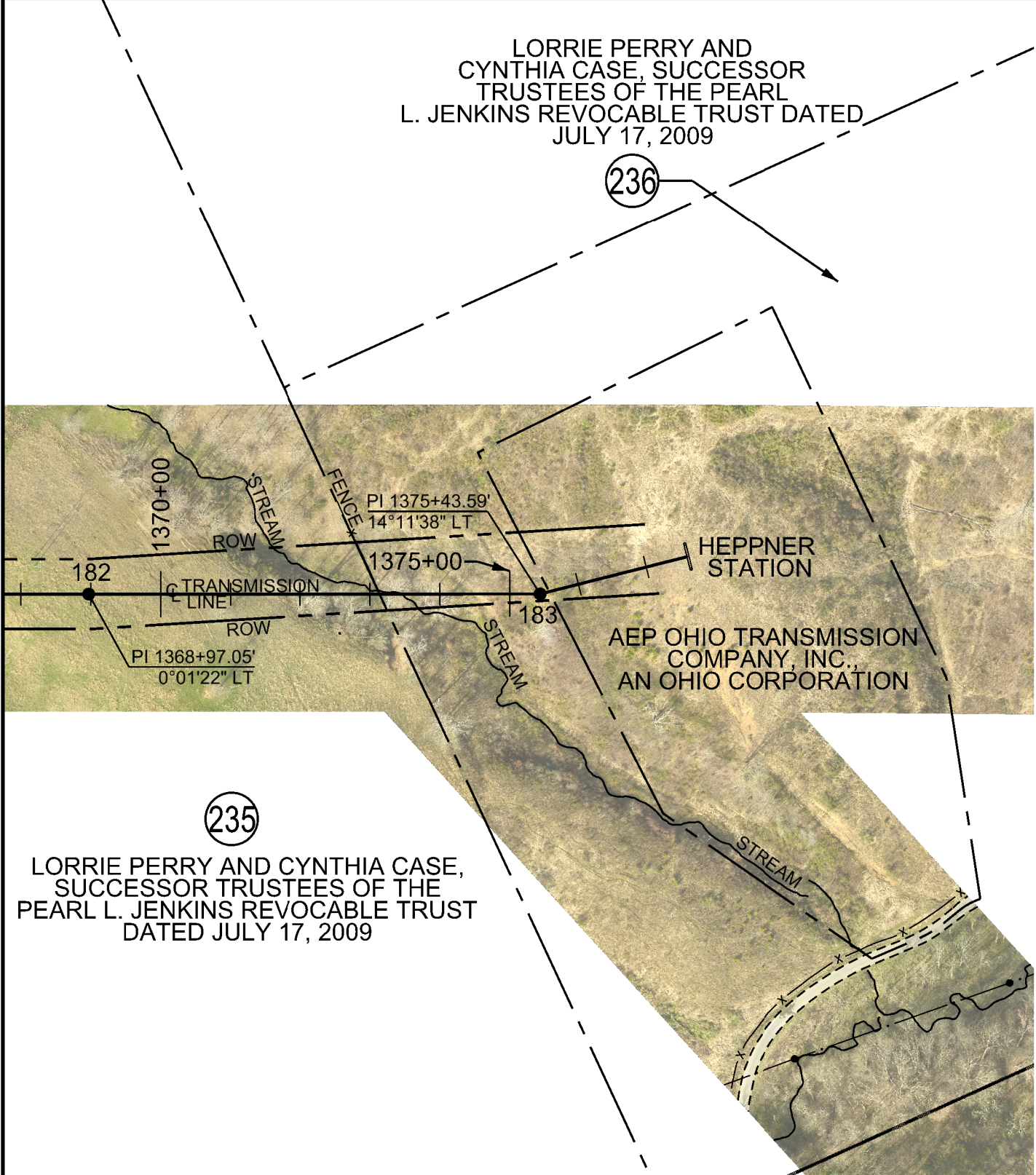
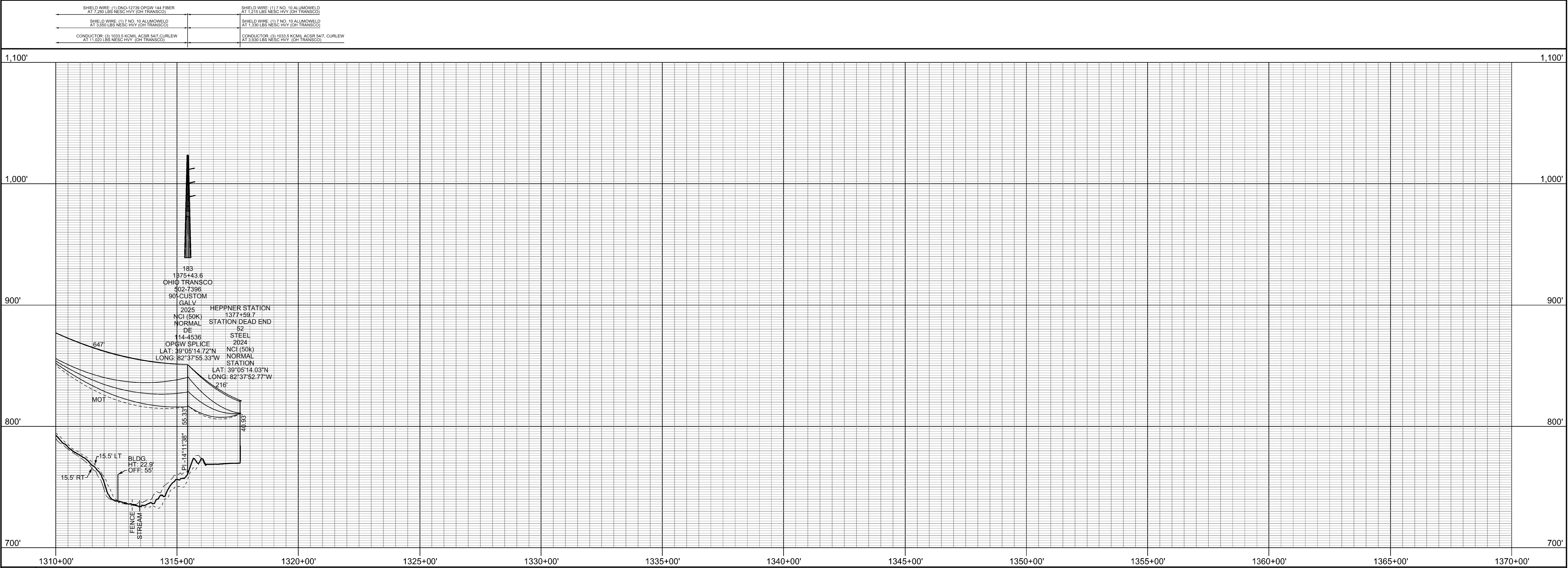
226
CARSON BAKER
AND DONNA BAKER

227
CARSON BAKER AND DONNA
BAKER AKA DONNA L. BAKER

229A
BRIAN
READER

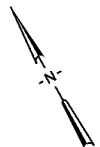
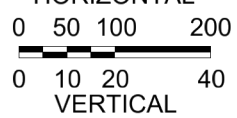
JACKSON HILL ROAD
C.R. 36 (40' WIDE R/W)

PI 1368+97.05
0°01'22" LT



REFER TO GENERAL INFORMATION SHEETS FOR ADDITIONAL LINE DESIGN DATA:
SHEET 2C FOR LEGEND, LINE DATA TABLE, GENERAL NOTES.
SHEET 2D SUPPLEMENTAL INFORMATION AND GUYING & ANCHOR INFORMATION.
SHEET 2E FOR PHASING DIAGRAM.
SHEET 2F FOR CONDUCTOR DAMPER AND SHIELD WIRE DAMPER INFORMATION.

REV	REVISION DESCRIPTION	DATE	BY
A	ISSUED FOR BID	01/10/2024	MESA



STATE OF OHIO
JACKSON COUNTY



MESA ASSOCIATES, INC.
10000 W. 10TH AVE., SUITE 200
DENVER, CO 80202-1000

REGISTRATION No.: 01692

ENG BY:	MJS	CHKD BY:	MJS
DRN BY:	TMO	APP BY:	WGF
R/W MAP NO:	N/A		

DATE: 12/07/2023

"THIS DRAWING IS THE PROPERTY OF AMERICAN ELECTRIC POWER AND IS LOANED UPON CONDITION THAT IT IS NOT TO BE COPIED OR REPRODUCED, IN WHOLE OR IN PART, OR USED FOR FURNISHING INFORMATION TO ANY PERSON WITHOUT THE WRITTEN CONSENT OF AMERICAN ELECTRIC POWER, OR FOR ANY PURPOSE DETRIMENTAL TO THEIR INTEREST, AND IS TO BE RETURNED UPON REQUEST."

AEP OHIO TRANSCO
ROSS - HEPPNER 138kV LINE
(PINE RIDGE - HEPPNER, 2025 REBUILD)
PLAN & PROFILE

EQUIP: TLN380:OH155

DWG: OH155S06

SHEET: 6 REV: A

**This foregoing document was electronically filed with the Public Utilities
Commission of Ohio Docketing Information System on**

4/3/2024 4:01:52 PM

in

Case No(s). 18-0031-EL-BTX, 19-2124-EL-BTA, 23-0492-EL-BTA

Summary: Correspondence Proof of Compliance with Condition (3). electronically
filed by Hector Garcia-Santana on behalf of AEP Ohio Transmission Company, Inc..