



Bricker & Eckler LLP
100 South Third Street
Columbus, OH 43215
Office: 614.227.2300
www.bricker.com

Kara Herrnstein
Partner
Direct Dial: 614.227.4908
kherrnstein@bricker.com

March 9, 2023

Via Electronic Filing

Ms. Tanowa Troupe
Administration/Docketing
Public Utilities Commission of Ohio
180 East Broad Street, 11th Floor
Columbus, OH 43215-3793

**Re: Powell Creek Solar, LLC,
OPSB Case No. 20-1084-EL-BGN**

Dear Ms. Troupe:

On March 9, 2023, Powell Creek Solar, LLC filed an updated preliminary project layout. Due to a technologic error during the filing process, relevant information was stripped from the attached figures. Attached is the correct copy of the figures.

Please contact me if you have any questions.

Sincerely,

Kara Herrnstein

Attachment

Cc: Jonathan Pawley (w/Attachment)

Figure 1. Certificated Layout Components - Certificate Issued July 2021

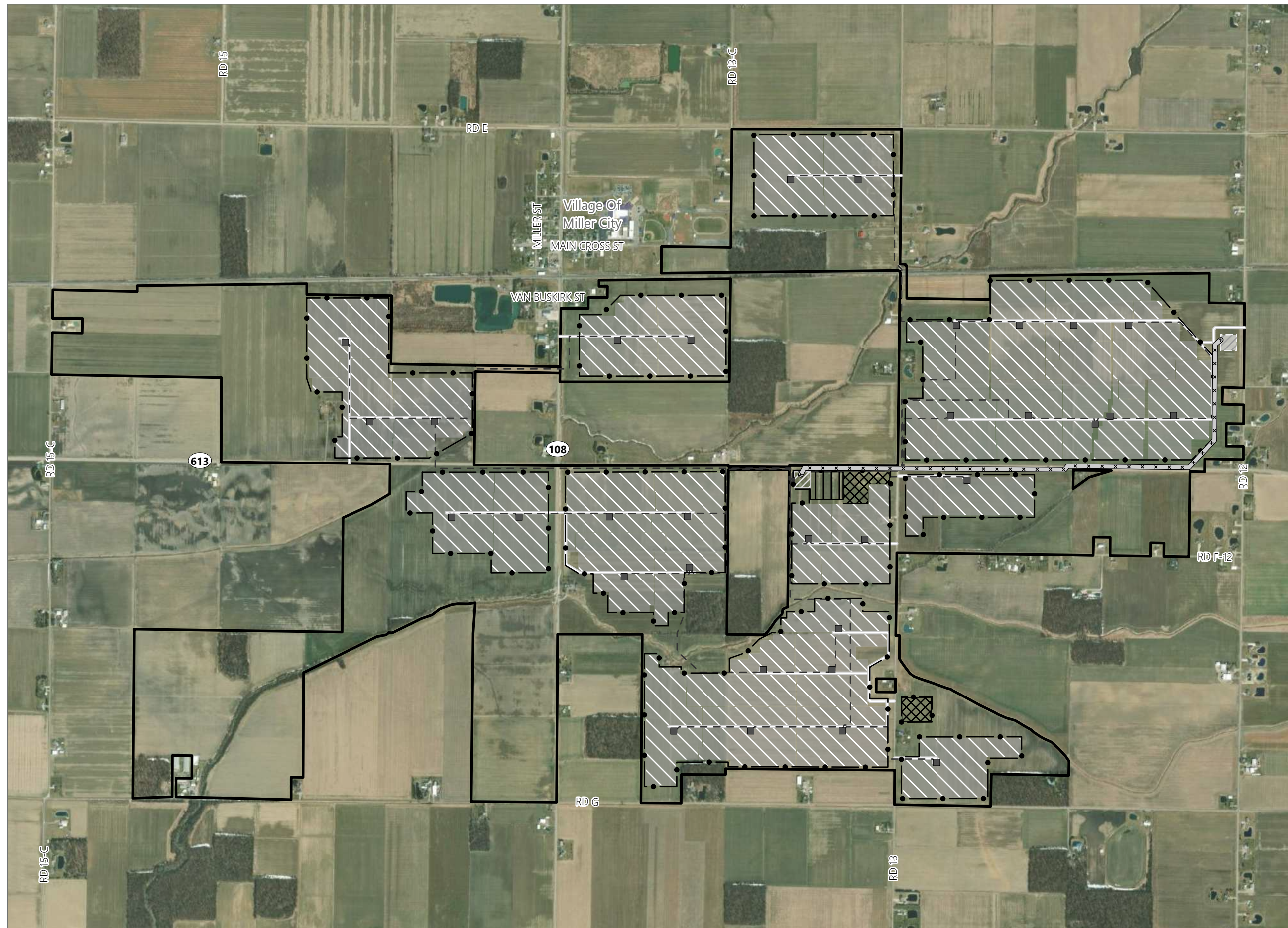


Figure 2. Updated Layout Components

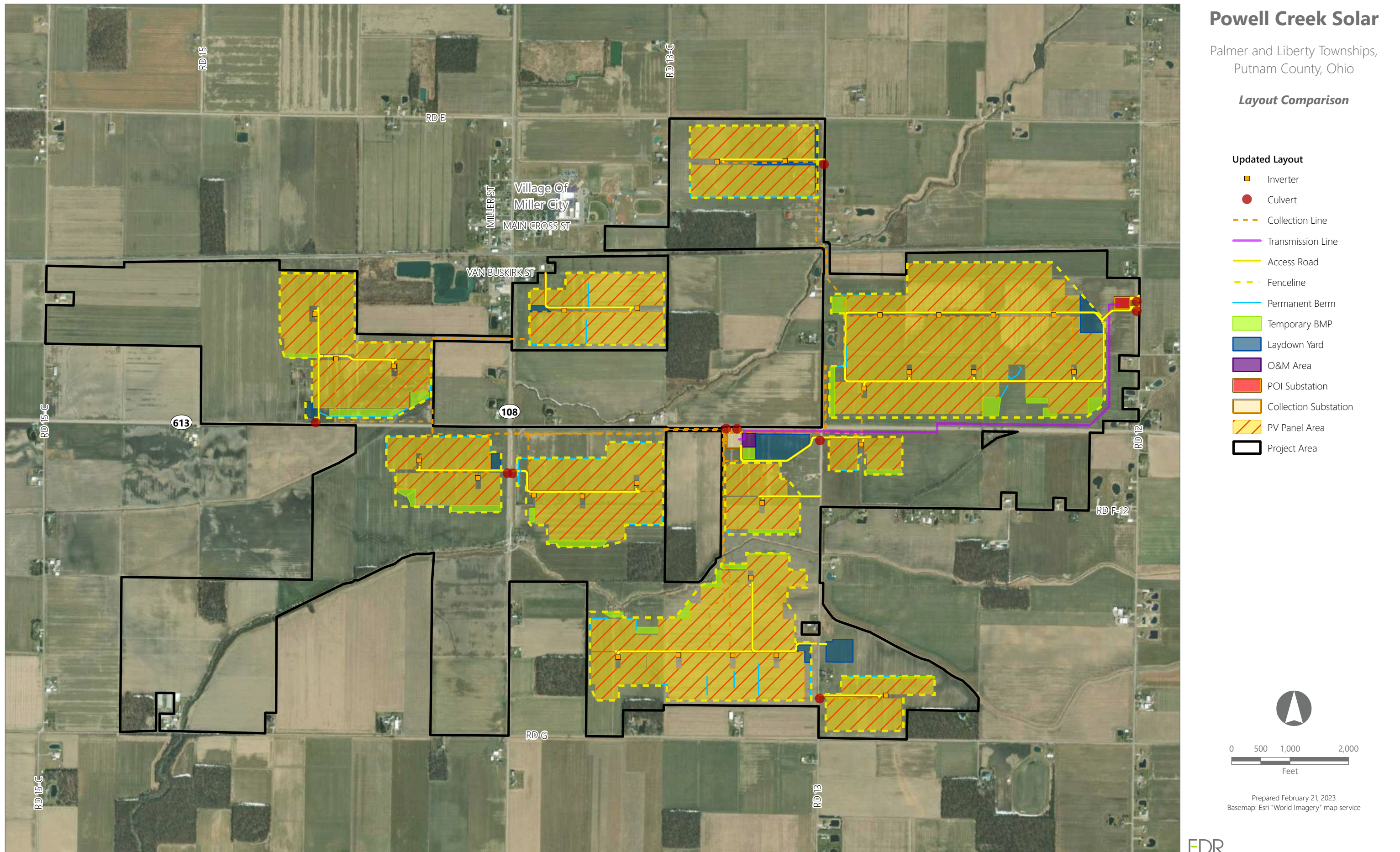


Figure 3. PV Panel Areas

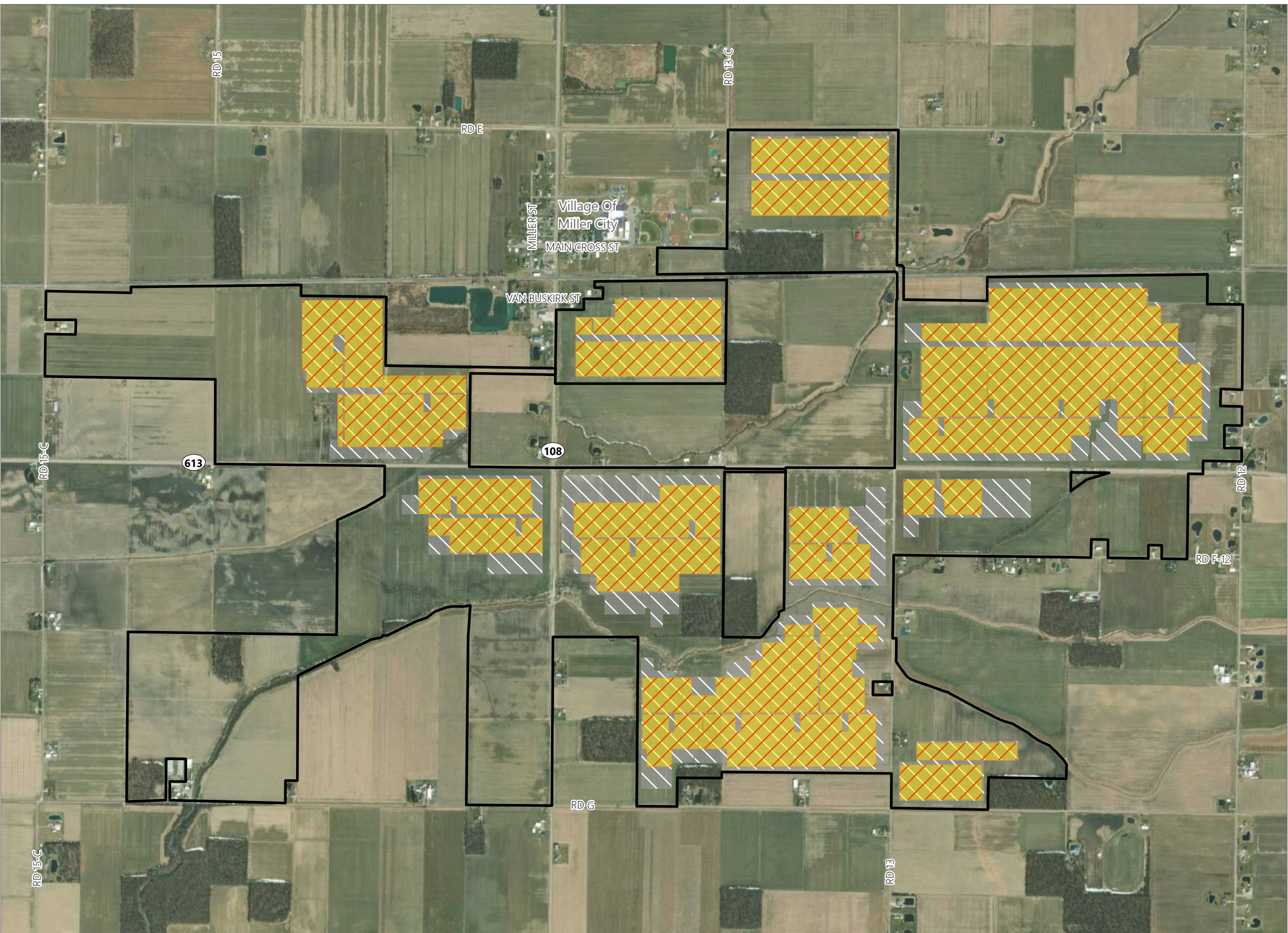
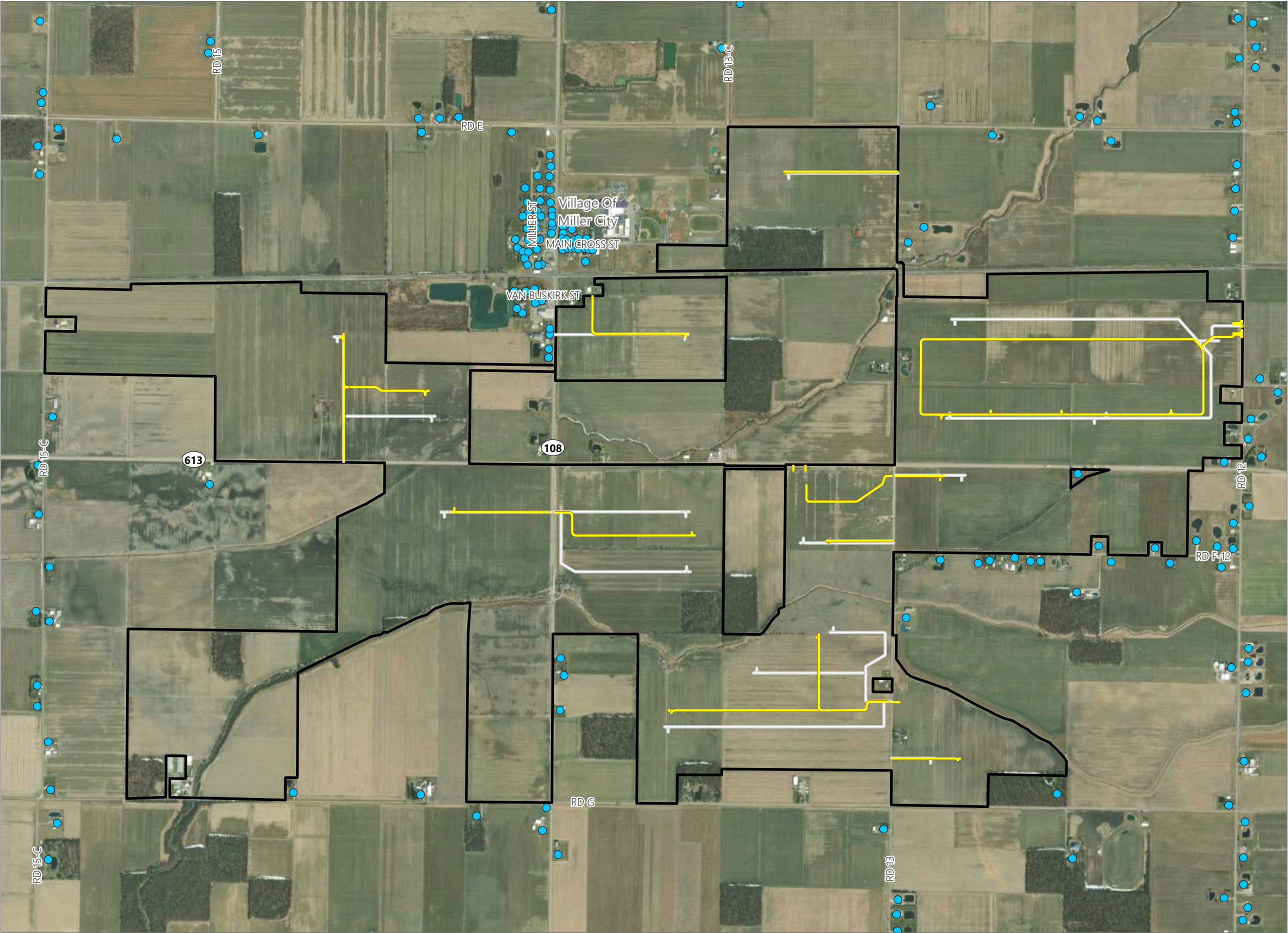


Figure 4. Access Roads

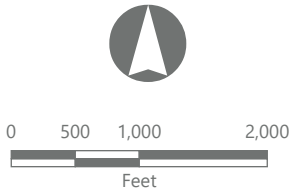


Powell Creek Solar

Palmer and Liberty Townships,
Putnam County, Ohio

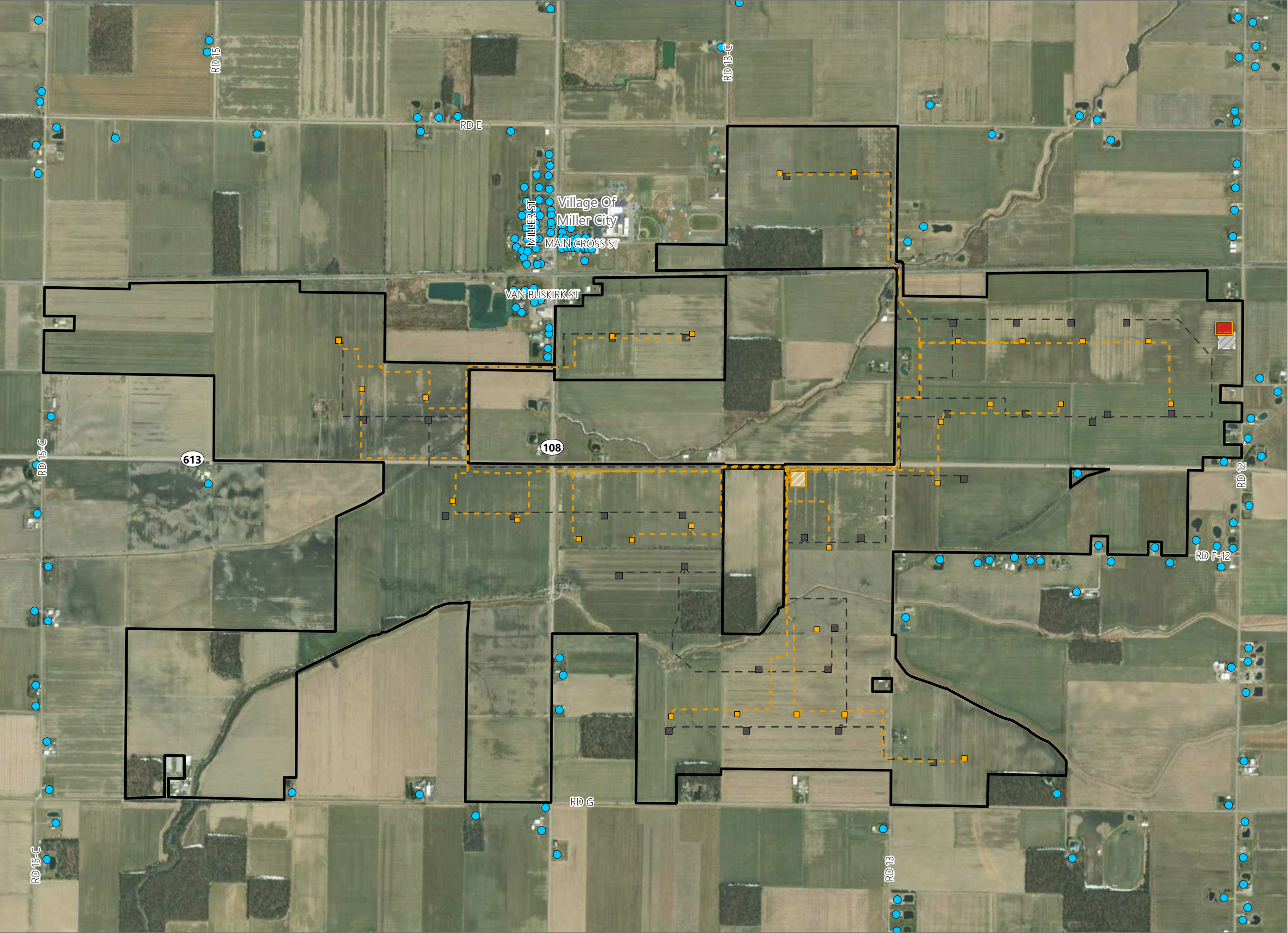
Layout Comparison

- Non-Participating Residence
- ▭ Project Area
- Updated Layout**
 - Access Road
- Certificated Layout**
 - Certificated Access Road



Prepared March 7, 2023
Basemap: Esri "World Imagery" map service

Figure 5. Inverters, Collection Lines, and Substations

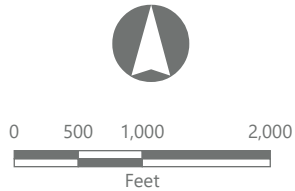
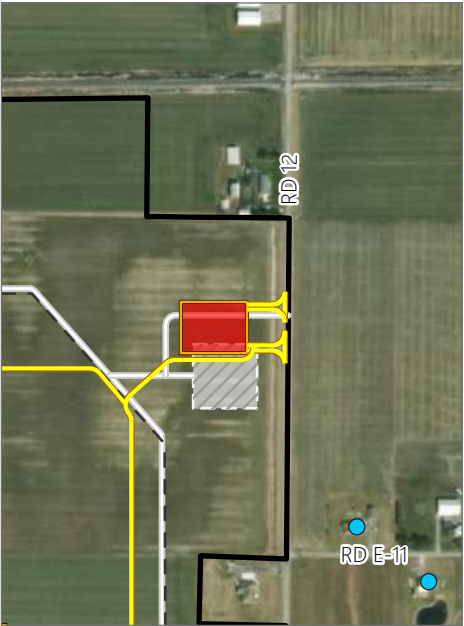


Powell Creek Solar

Palmer and Liberty Townships,
Putnam County, Ohio

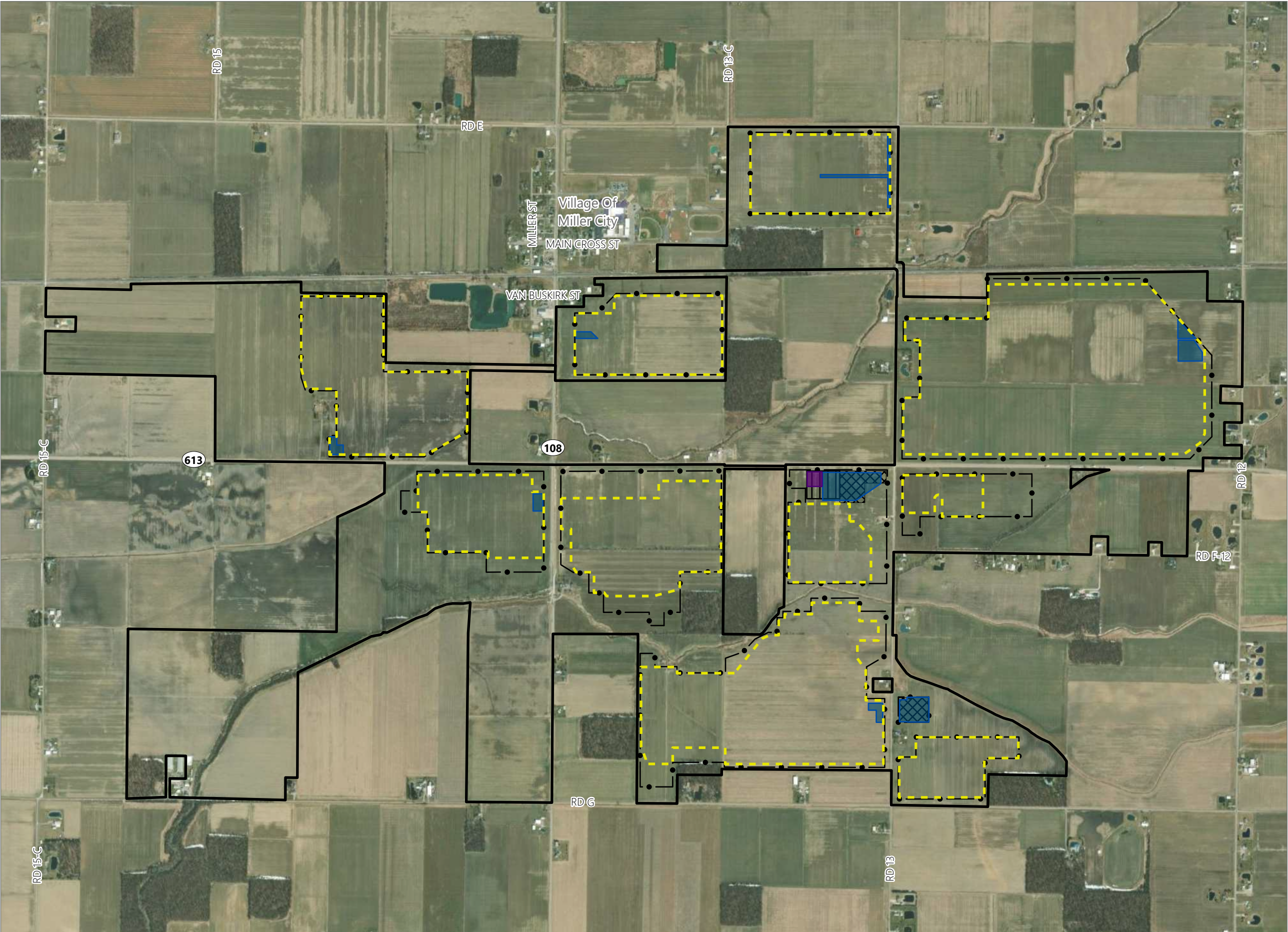
Layout Comparison

- Non-Participating Residence
- ▭ Project Area
- Updated Layout**
 - Inverter
 - - - Collection Line
 - POI Substation
 - Collection Substation
- Certificated Layout**
 - Certificated Inverter
 - - - Certificated Collection Line
 - ▨ Certificated POI Substation
 - ▨ Certificated Collection Substation



Prepared March 7, 2023
Basemap: Esri "World Imagery" map service

Figure 6. Fencelines, O&M Area, and Laydown Yards



Powell Creek Solar

Palmer and Liberty Townships,
Putnam County, Ohio

Layout Comparison

- Project Area
- Updated Layout**
 - O&M Area
 - Fenceline
 - Laydown Yard
- Certificated Layout**
 - Certificated Fenceline
 - Certificated O&M Building
 - Certificated Laydown Yard



0 500 1,000 2,000
Feet

Prepared February 21, 2023
Basemap: Esri "World Imagery" map service

Figure 7. Transmission Line, Berms, Culverts, and BMP Areas

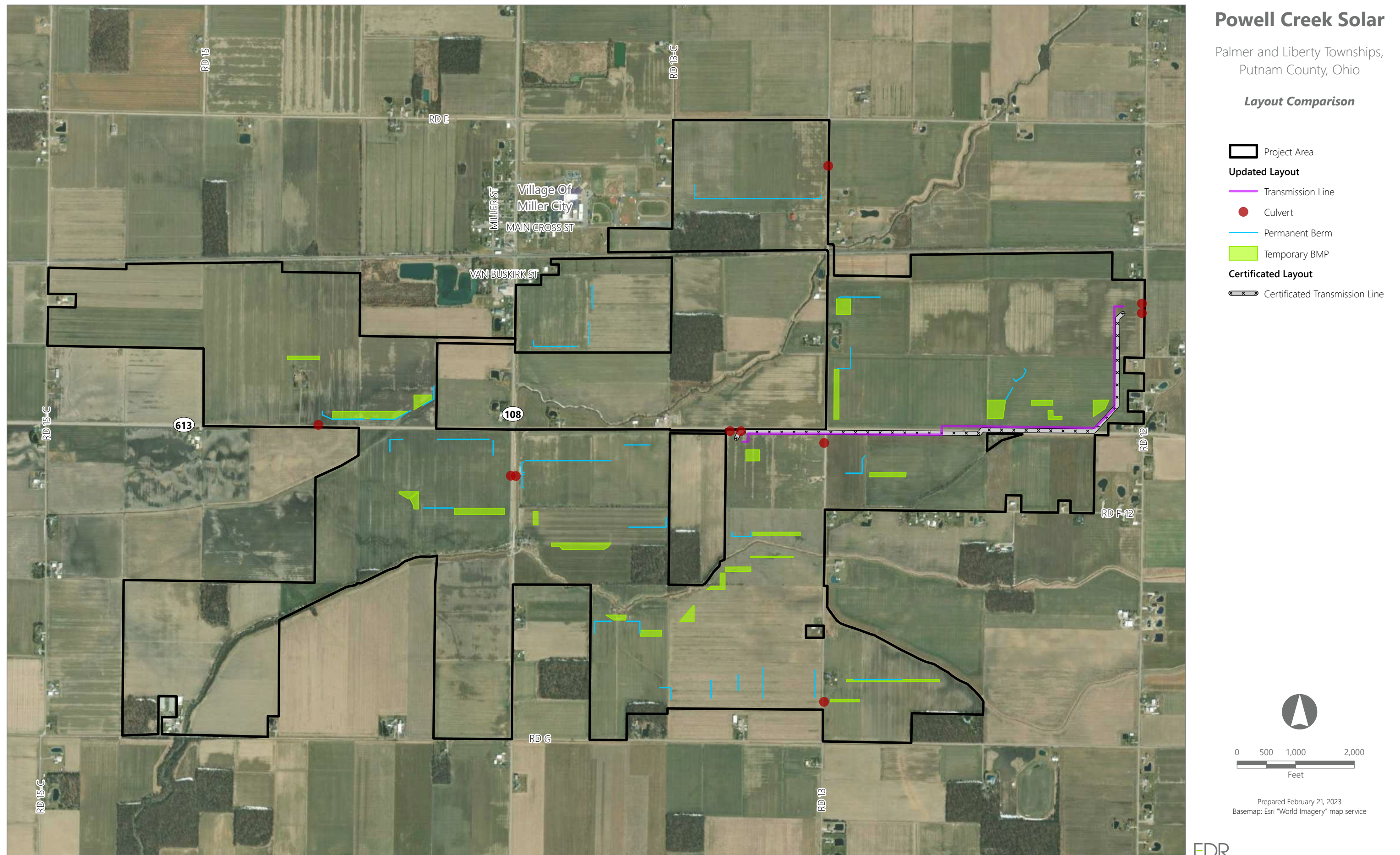
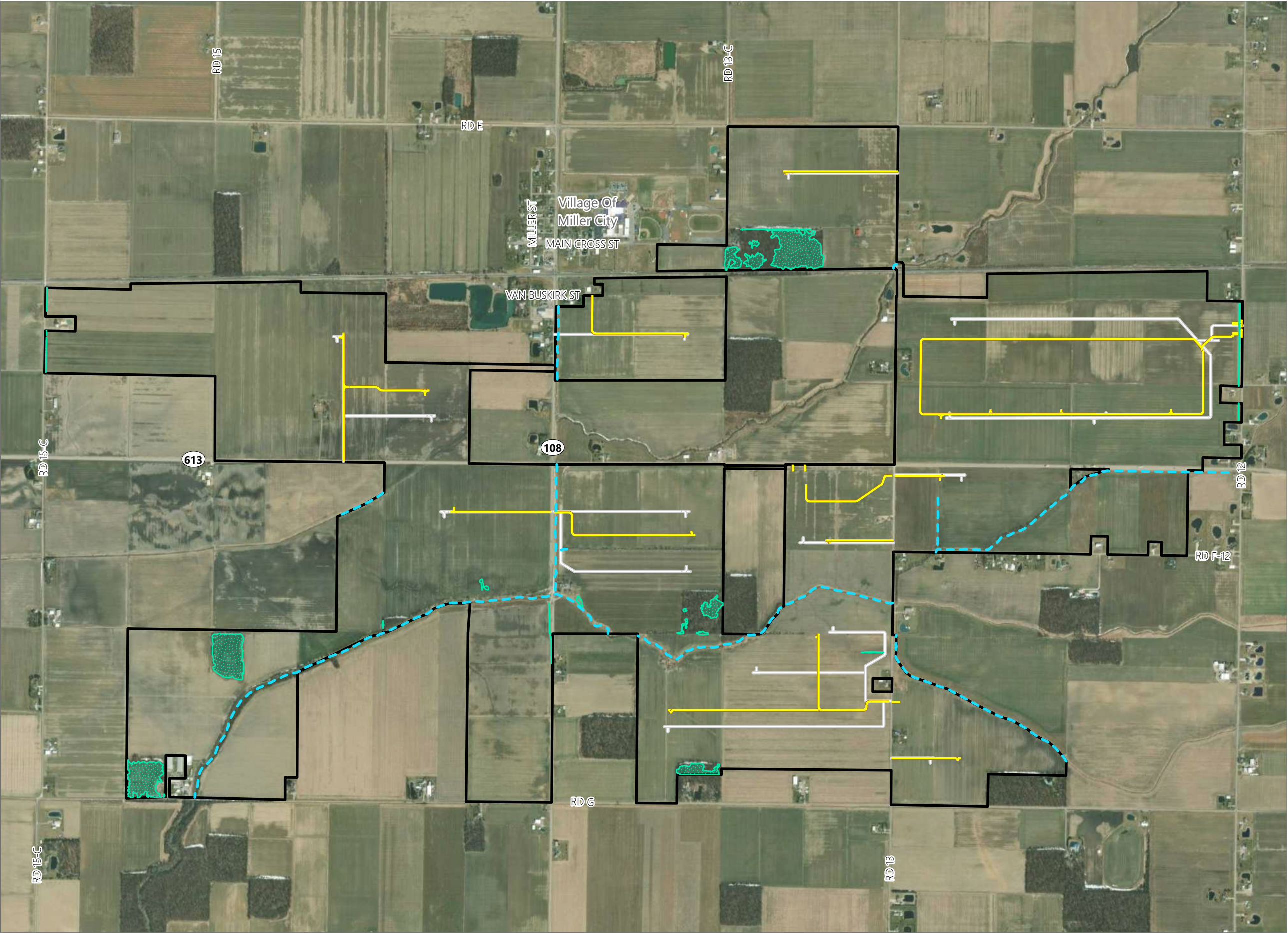


Figure 8. Delineated Features and Access Roads

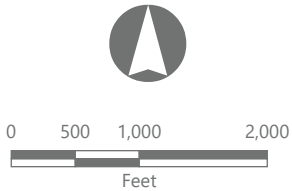


Powell Creek Solar

Palmer and Liberty Townships,
Putnam County, Ohio

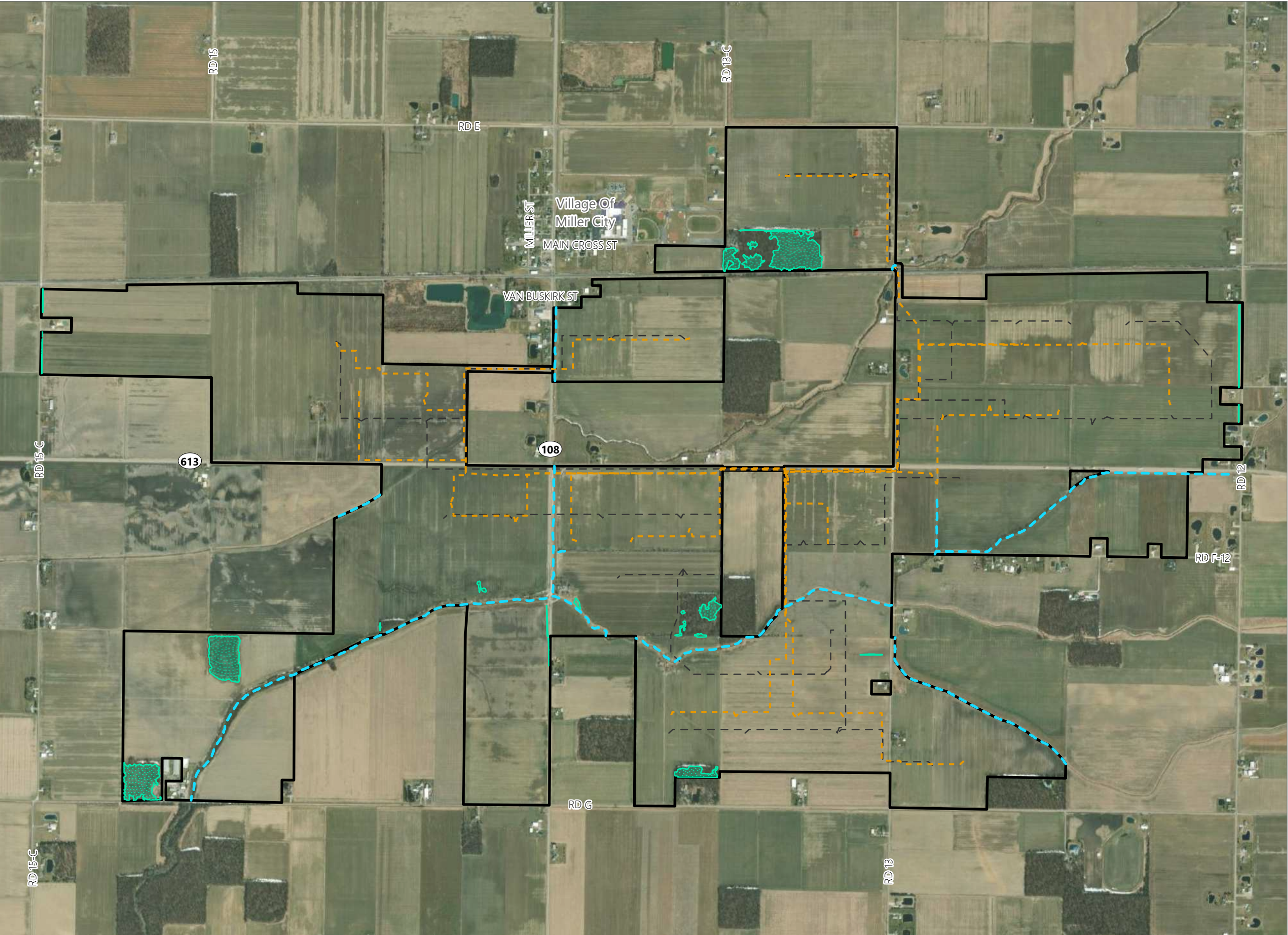
Layout Comparison

- Project Area
- Delineated Features
 - Delineated Stream
 - Delineated Wetland
- Updated Layout
 - Access Road
- Certificated Layout
 - Certificated Access Road



Prepared February 21, 2023
Basemap: Esri "World Imagery" map service

Figure 9. Delineated Features and Collection Lines

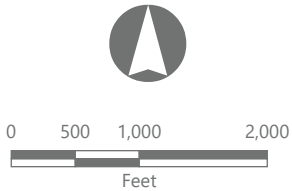


Powell Creek Solar

Palmer and Liberty Townships,
Putnam County, Ohio

Layout Comparison

- Project Area
- Delineated Features
 - Delineated Stream
 - Delineated Wetland
- Updated Layout
 - Collection Line
- Certificated Layout
 - Certificated Collection Line



Prepared February 21, 2023
Basemap: Esri "World Imagery" map service

**This foregoing document was electronically filed with the Public Utilities
Commission of Ohio Docketing Information System on**

3/9/2023 2:46:13 PM

in

Case No(s). 20-1084-EL-BGN

Summary: Text Corrected Figures of Update Project Layout electronically filed by
Teresa Orahood on behalf of Herrnstein, Kara