

February 4, 2022

Ms. Tanowa Troupe, Secretary
Ohio Power Siting Board
Docketing Division
180 East Broad Street, 11th Floor
Columbus, Ohio 43215-3797

Re: Case No. 20-417-EL-BGN - In the Matter of the Application of Grover Hill Wind, LLC for a Certificate of Environmental Compatibility and Public Need to Construct a Wind-Powered Electric Generation Facility in Paulding County, Ohio.

Response to Fourteenth Data Request from Staff of the Ohio Power Siting Board

Dear Ms. Troupe:

Attached please find Grover Hill Wind, LLC's ("Applicant") Response to the Fourteenth Data Request from the staff of the Ohio Power Siting Board ("OPSB Staff"). The Applicant provided this response to OPSB Staff on February 4, 2022.

We are available, at your convenience, to answer any questions you may have.

Respectfully submitted,

/s/ Christine M.T. Pirik

Christine M.T. Pirik (0029759)
(Counsel of Record)

Terrence O'Donnell (0074213)

William V. Vorys (0093479)

Matthew C. McDonnell (0090164)

Dickinson Wright PLLC

150 East Gay Street, Suite 2400

Columbus, Ohio 43215

Phone: (614) 591-5461

cpirik@dickinsonwright.com

todonnell@dickinsonwright.com

wvorys@dickinsonwright.com

mmcdonnell@dickinsonwright.com

Attorneys for Grover Hill Wind Project, LLC

Cc: Jim O'Dell
Theresa White
Randall Schumacher
Jon Pawley
Grant Zeto

CERTIFICATE OF SERVICE

The Ohio Power Siting Board's e-filing system will electronically serve notice of the filing of this document on the parties referenced in the service list of the docket card who have electronically subscribed to these cases. In addition, the undersigned certifies that a copy of the foregoing document is also being served upon the persons below this 4th day of February, 2022.

/s/ Christine M.T. Pirik

Christine M.T. Pirik (0029759)

Counsel:

werner.margard@OhioAGO.gov

Administrative Law Judge:

greta.see@puco.ohio.gov

david.hicks@puco.ohio.gov

4878-0375-2460 v1 [73809-23]

**BEFORE
THE OHIO POWER SITING BOARD**

In the Matter of the Application of Grover Hill Wind,)
LLC for a Certificate of Environmental Compatibility)
and Public Need to Construct a Wind-Powered) Case No: 20-417-EL-BGN
Electric Generation Facility in Paulding County, Ohio)

**GROVER HILL WIND, LLC 'S
RESPONSE TO THE FOURTEENTH DATA REQUEST
FROM THE STAFF OF THE OHIO POWER SITING BOARD**

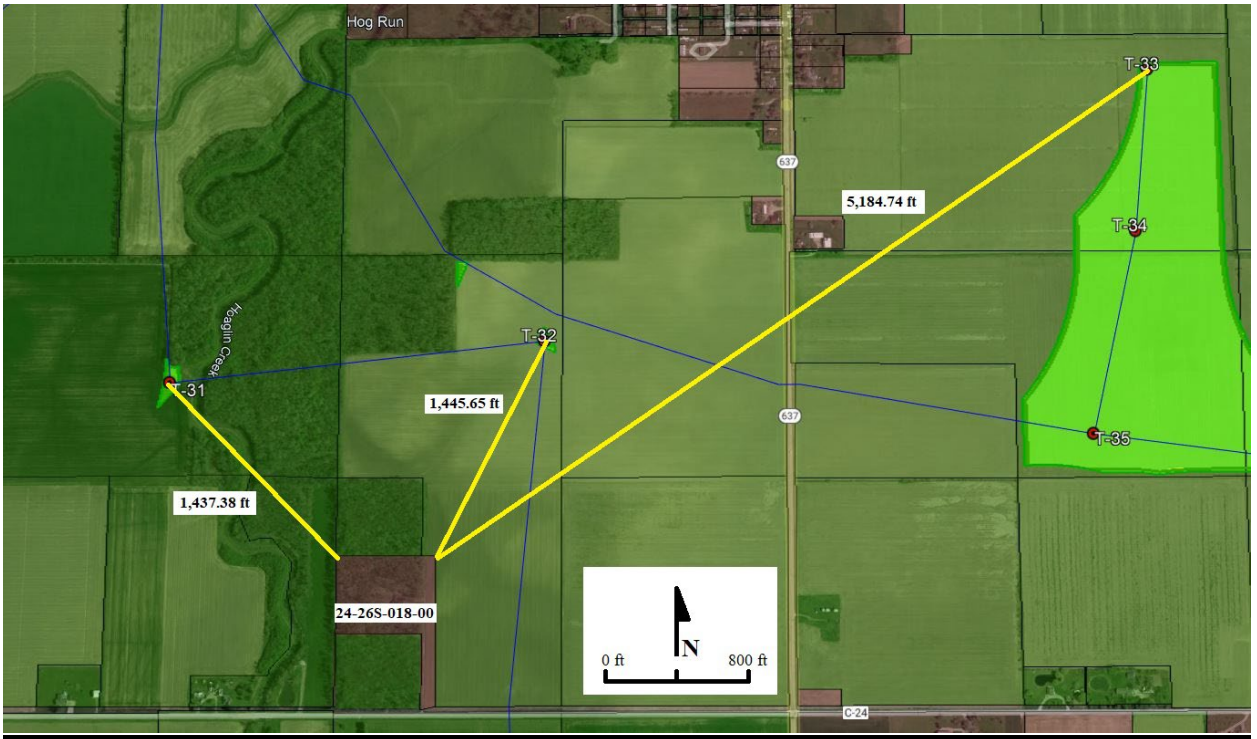
On May 3, 2021, as supplemented on June 7, 2021 and December 21, 2021, Grover Hill Wind, LLC (“Applicant”) filed an application (“Application”) with the Ohio Power Siting Board (“OPSB”) proposing to construct a wind-powered electric generation facility in Paulding County, Ohio (“Project”).

On February 3, 2022, the Staff of the OPSB (“OPSB Staff”) provided the Applicant with OPSB Staff’s Fourteenth Data Request. Now comes the Applicant providing the following Response to the Fourteenth Data Request from the OPSB Staff.

- 1. Table 14 of the Application indicates that the nearest turbine to Parcel ID 24-26S-018-00 is T-33. Isn’t T-31 and T-32 closer to this parcel? Please indicate the distance from the nearest turbines (both T-31 and T-32) to that property line.**

Response:

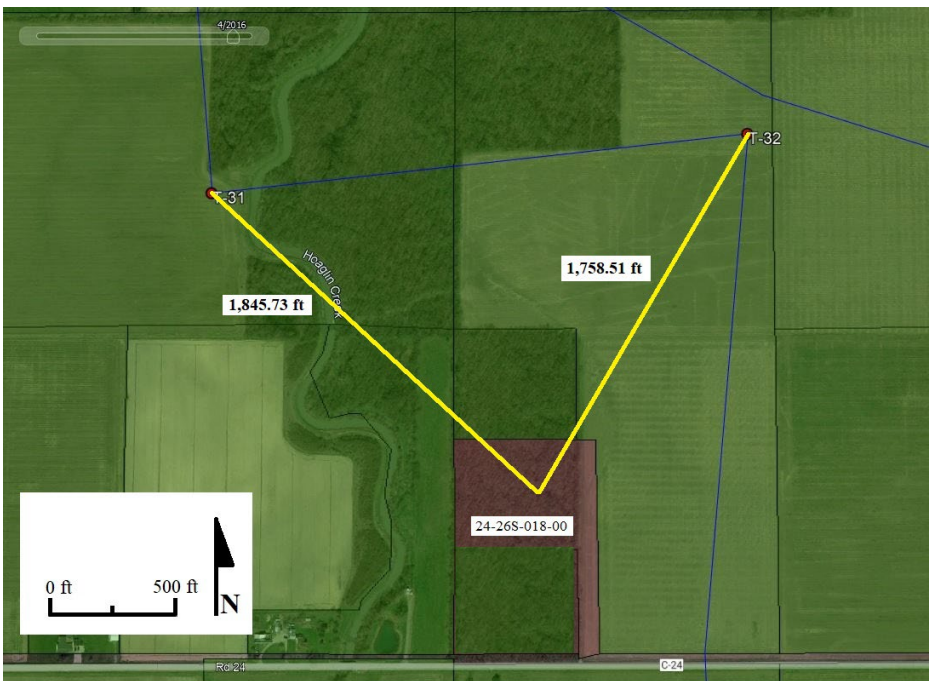
- The distance of T-31 to the northwest corner of the parcel is 1,437.38 feet and is the closest to the parcel in question.
- The distance of T-32 to the northeast corner of the parcel is 1,445.65 feet.
- The distance of T-33 to the northeast corner of the parcel is 5,184.74 feet.



2. Parcel ID 24-26S-018-00 appears to have a residence on it. Please indicate the distance from the nearest wind turbine to that residence.

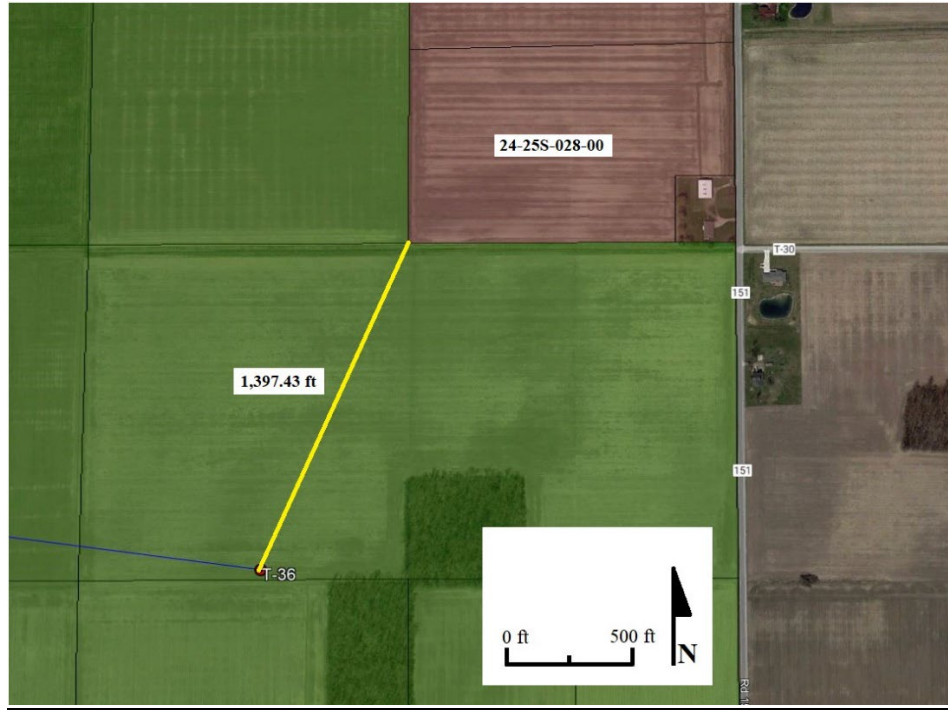
Response:

- The distance between T-31 and the approximated center point of the residential structure is 1,845.73 feet.
- The distance between T-32 and the approximated center point of the residential structure is 1,758.51 feet.



3. **In follow-up to the Applicant’s response to the fifth data request set, (question/answer #26), please confirm that the distance from turbine T-36 to the nearest non-participating property line is 1,397.4 feet.**

Response: The Applicant confirms that the distance between T-36 and the nearest non-participating property line is 1,397.43 feet.



4. **Table 14 of the Application indicates that the nearest turbine to Parcel ID 24-25S-009-00 is T-36. This is not accurate as to Parcel ID and distance. Please accurately revise this line of Table 14.**

Response: The Applicant verifies that the nearest turbine to the non-participating Parcel ID 24-25S-009-00 is T-33. A revised Table 14 is below with the corrected line highlighted in yellow. This Table 14 replaces and supersedes the table filed with the Application.

**Table 14: Parcels Within 1,500 Feet of a Wind Turbine
REVISED 02-02-2022**

Parcel ID	Distance to Nearest Wind Turbine	Nearest Wind Turbine	Lease Status ¹
24-35S-001-00	0.0	T-17	Pending
24-14S-006-01	0.0	T-15	Pending
24-14S-007-00	0.0	T-13	Pending
24-15S-001-02	0.0	T-27	Pending

**Table 14: Parcels Within 1,500 Feet of a Wind Turbine
REVISED 02-02-2022**

Parcel ID	Distance to Nearest Wind Turbine	Nearest Wind Turbine	Lease Status¹
24-15S-010-00	0.0	T-13	Pending
24-22S-004-00	0.0	T-30	Full Lease Signed
24-23S-001-00	0.0	T-43	Full Lease Signed
24-23S-002-00	0.0	T-43	Full Lease Signed
24-25S-027-01	0.0	T-29	Full Lease Signed
24-26S-013-00	0.0	T-31	Full Lease Signed
24-26S-020-00	0.0	T-41	Full Lease Signed
24-27S-006-00	0.0	T-29	Full Lease Signed
24-27S-012-03	0.0	T-41	Full Lease Signed
24-27S-015-01	0.0	T-38	Full Lease Signed
24-34S-008-00	0.0	T-36	Full Lease Signed
24-35S-002-00	0.0	T-17	Full Lease Signed
24-25S-020-00	0.0	T-36	Full Lease Signed
24-23S-013-00	0.0	T-37	Full Lease Signed
24-25S-017-00	0.0	T-11	Full Lease Signed
24-15S-003-00	0.0	T-16	Full Lease Signed
24-15S-003-00	0.0	T-14	Full Lease Signed
24-25S-017-00	0.0	T-30	Full Lease Signed
24-27S-006-00	0.0	T-14	Full Lease Signed
24-23S-016-00	15.7	T-15	Full Lease Signed
24-25S-024-00	65.1	T-32	Full Lease Signed
24-15S-001-00	69.4	T-43	Full Lease Signed
24-14S-006-02	75.5	T-30	Full Lease Signed
24-35S-010-00	99.7	T-37	Full Lease Signed
24-15S-005-00	101.7	T-38	Full Lease Signed
24-34S-009-01	104.9	T-32	Full Lease Signed
24-15S-004-00	109.7	T-32	Full Lease Signed
24-26S-021-00	115.9	T-31	Full Lease Signed
24-27S-012-00	120.1	T-36	Full Lease Signed
24-25S-007-00	186.4	T-29	Full Lease Signed
24-14S-005-00	200.9	T-25	Full Lease Signed
24-27S-003-00	222.8	T-38	Full Lease Signed
24-15S-002-00	241.2	T-38	Full Lease Signed
24-27S-004-00	254.2	T-31	Full Lease Signed
24-15S-009-00	261.9	T-37	Full Lease Signed
24-25S-020-01	277.7	T-31	Full Lease Signed
24-27S-005-00	288.4	T-33	Full Lease Signed
24-27S-011-00	305.8	T-17	Full Lease Signed
24-14S-008-00	305.8	T-29	Full Lease Signed
24-27S-013-00	356.8	T-36	Full Lease Signed
24-34S-004-00	376.1	T-16	Full Lease Signed

**Table 14: Parcels Within 1,500 Feet of a Wind Turbine
REVISED 02-02-2022**

Parcel ID	Distance to Nearest Wind Turbine	Nearest Wind Turbine	Lease Status¹
24-27S-002-00	398.5	T-32	Full Lease Signed
24-25S-021-00	451.8	T-32	Full Lease Signed
24-15S-001-03	467.4	T-33	Full Lease Signed
24-25S-005-00	479.3	T-35	Full Lease Signed
24-26S-026-00	489.9	T-28	Full Lease Signed
24-26S-021-01	503.7	T-37	Full Lease Signed
24-14S-011-00	555.2	T-30	Full Lease Signed
24-25S-027-00	596.7	T-16	Full Lease Signed
24-26S-016-01	600.0	T-30	Full Lease Signed
24-27S-009-00	619.5	T-35	Full Lease Signed
24-22S-003-00	661.4	T-13	Full Lease Signed
24-25S-012-00	663.4	T-27	Full Lease Signed
24-26S-014-00	686.5	T-28	Full Lease Signed
24-34S-007-00	707.8	T-15	Full Lease Signed
24-26S-005-00	725.7	T-33	Full Lease Signed
24-35S-006-01	725.8	T-30	Full Lease Signed
24-35S-009-00	737.7	T-32	Full Lease Signed
24-23S-012-00	759.1	T-40	Full Lease Signed
24-27S-008-00	760.9	T-37	Full Lease Signed
24-25S-025-00	773.9	T-40	Full Lease Signed
24-26S-016-00	775.7	T-43	Full Lease Signed
24-14S-006-00	776.3	T-13	Full Lease Signed
24-26S-011-00	796.8	T-36	Full Lease Signed
24-26S-023-00	830.7	T-25	Full Lease Signed
24-26S-017-00	844.7	T-43	Full Lease Signed
24-35S-003-00	860.3	T-15	Full Lease Signed
24-34S-007-02	860.5	T-16	Full Lease Signed
24-27S-014-00	1019.3	T-14	Full Lease Signed
24-35S-011-00	1041.7	T-13	Full Lease Signed
24-26S-019-00	1101.9	T-17	Full Lease Signed
24-14S-005-01	1115.4	T-41	Full Lease Signed
24-22S-002-00	1139.0	T-26	Full Lease Signed
24-27S-012-02	1164.1	T-36	Full Lease Signed
24-22S-002-01	1168.0	T-31	Full Lease Signed
24-14S-012-00	1168.7	T-32	Full Lease Signed
24-15S-003-01	1182.4	T-29	Full Lease Signed
24-23S-001-01	1189.9	T-30	Full Lease Signed
24-34S-009-00	1194.2	T-28	Full Lease Signed
24-25S-026-00	1258.1	T-37	Full Lease Signed
24-22S-008-02	1281.2	T-38	Full Lease Signed
24-22S-008-00	1281.2	T-35	Full Lease Signed

**Table 14: Parcels Within 1,500 Feet of a Wind Turbine
REVISED 02-02-2022**

Parcel ID	Distance to Nearest Wind Turbine	Nearest Wind Turbine	Lease Status¹
24-25S-020-03	1369.5	T-25	Full Lease Signed
24-25S-020-02	1373.0	T-34	Full Lease Signed
24-15S-008-00	1373.9	T-40	Full Lease Signed
24-26S-022-00	1377.9	T-11	Full Lease Signed
24-22S-015-00	1381.4	T-33	Full Lease Signed
24-25S-006-00	1386.8	T-27	Full Lease Signed
24-36S-003-00	1392.5	T-30	Full Lease Signed
24-14S-009-00	1394.2	T-13	Not Participating
24-23S-010-00	1394.4	T-33	Not Participating
24-35S-004-00	1395.4	T-27	Not Participating
24-23S-004-01	1396.0	T-33	Not Participating
24-25S-028-00	1397.4	T-27	Not Participating
24-27S-010-00	1398.6	T-11	Not Participating
24-22S-001-00	1404.7	T-11	Not Participating
24-34S-005-00	1408.7	T-11	Not Participating
24-36S-003-01	1412.6	T-17	Not Participating
24-25S-012-02	1414.2	T-33	Not Participating
24-26S-013-01	1416.4	T-17	Not Participating
24-27S-006-01	1417.3	T-40	Not Participating
26-11S-007-00	1424.8	T-31	Not Participating
24-36S-007-00	1425.8	T-40	Not Participating
24-27S-008-01	1432.2	T-29	Not Participating
24-16S-006-00	1433.8	T-25	Not Participating
24-26S-018-00	1437.4	T-33	Not Participating
24-16S-007-00	1437.8	T-36	Not Participating
24-22S-005-00	1439.9	T-37	Not Participating
24-25S-009-00	1440.2	T-33	Not Participating
24-22S-010-00	1443.9	T-41	Not Participating
24-35S-009-01	1445.2	T-16	Not Participating
24-10S-006-01	1448.8	T-33	Not Participating
24-16S-012-00	1449.6	T-41	Not Participating
24-10S-005-00	1453.9	T-32	Not Participating
24-28S-012-00	1459.3	T-17	Not Participating
24-27S-012-01	1468.6	T-35	Not Participating
24-25S-010-00	1475.8	T-35	Not Participating
24-28S-002-00	1481.8	T-15	Participating
24-27S-014-01	1481.9	T-31	Participating
26-02S-001-00	1486.0	T-31	Participating
24-15S-001-01	1500.3	T-15	Transmission Easement

¹ Anticipated lease status as of 4/23/2021.

5. **Figure 11 of the Application indicates that Parcel ID 24-26S-018-00 is a non- leased parcel. Please confirm that this parcel is non-leased with the Grover Hill Wind Farm project.**

Response: The Applicant confirms this parcel is not leased at this time. Please refer to the revised Table 14 in the row highlighted in green.

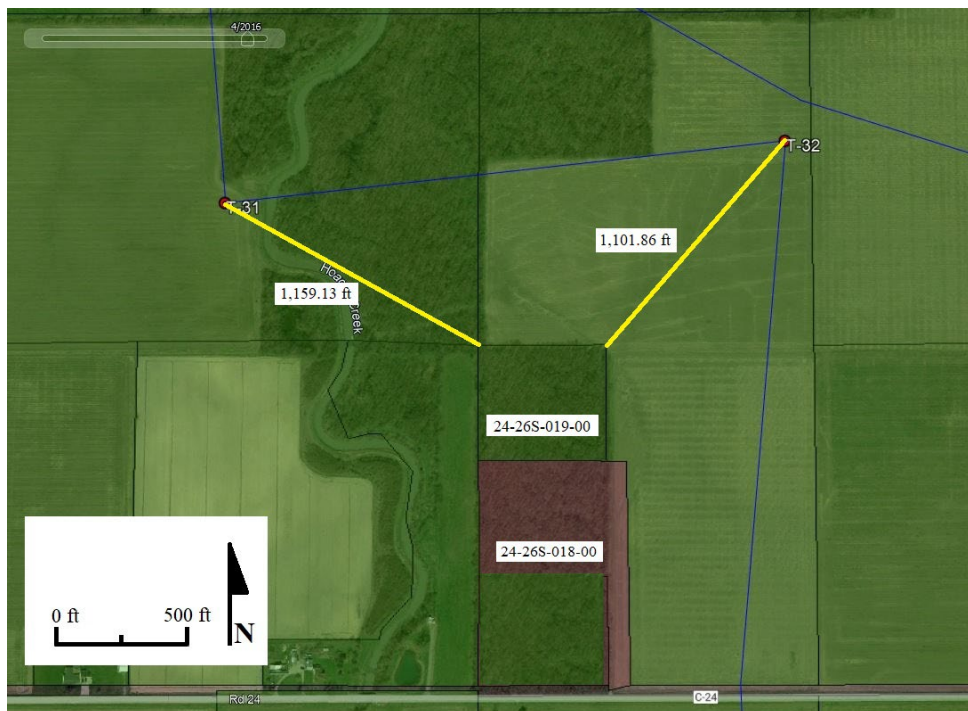
6. **Figure 11 of the Application indicates that Parcel ID 24-26S-019-00 is a leased parcel. Please confirm that this parcel is leased with the Grover Hill Wind Farm project.**

Response: The Applicant confirms that this parcel is leased with the Project.

7. **Please indicate the distance from the property line of Parcel ID 24-26S-019-00 to the nearest wind turbine.**

Response:

- The distance between T-31 and the northwest corner of the parcel is 1,159.13 feet.
- The distance between T-32 and the northeast corner of the parcel is 1,101.86 feet.



Respectfully submitted,

/s/ Christine M.T. Pirik

Christine M.T. Pirik (0029759)

(Counsel of Record)

Terrence O'Donnell (0074213)

William V. Vorys (0093479)

Matthew C. McDonnell (0090164)

Dickinson Wright PLLC

150 East Gay Street, Suite 2400

Columbus, Ohio 43215

Attorneys for Grover Hill Wind, LLC

4879-9374-6956 v2 [73809-23]

**This foregoing document was electronically filed with the Public Utilities
Commission of Ohio Docketing Information System on**

2/4/2022 4:59:40 PM

in

Case No(s). 20-0417-EL-BGN

Summary: Response - Response to Fourteenth Data Request from Staff of the Ohio Power Siting Board electronically filed by Christine M.T. Pirik on behalf of Grover Hill Wind, LLC