



Dixon Run Solar

Exhibit P

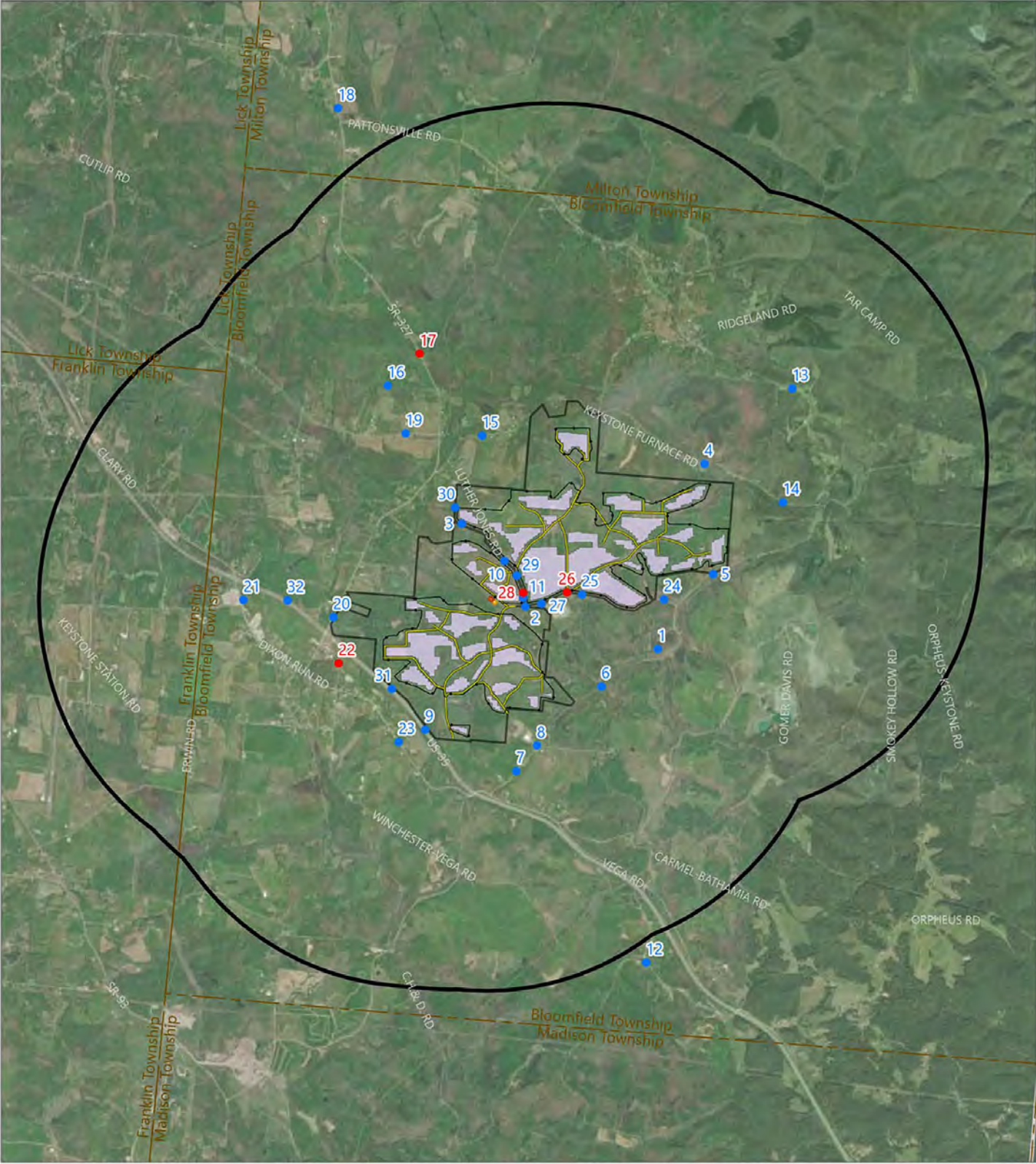
Visual Resource Assessment and Mitigation Plan

Filing 2 of 2

Case No. 21-0768 EL BGN

Appendix A

Viewpoint Location Map and Photo Log



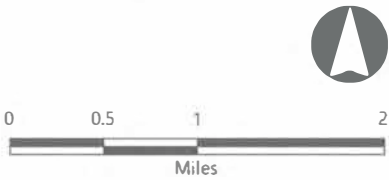
Dixon Run Solar

Bloomfield Township, Jackson County, Ohio

Visual Resource Assessment

EDR

- Viewpoint
- Simulated Viewpoint
- Fenceline
- Access Road
- Project Area
- Collection Substation
- POI Substation
- PV Panel Area
- 2-Mile Study Area
- Township Boundary
- County Boundary





Viewpoint 1

View looking west-southwest from Dixon Run Cemetery Rd in the Township of Bloomfield, Jackson County, Ohio

Landscape Similarity Zone:
Forest

User Group:
Local Residents, Tourists/Recreational Users

Visually Sensitive Resource(s):
Dixon Run Cemetery, Ohio's Hill Country Heritage Area

Coordinates:
38.99140° N, 82.49575° W

Distance to Project:
0.35 mile

Elevation:
758.7 feet



Viewpoint 2

View looking east-northeast from Luther Jones Rd in the Township of Bloomfield, Jackson County, Ohio

Landscape Similarity Zone:
Cropland/Pasture

User Group:
Local Residents

Visually Sensitive Resource(s):
Ohio's Hill Country Heritage Area

Coordinates:
38.99590° N, 82.51379° W

Distance to Project:
169.3 feet

Elevation:
858.5 feet

Dixon Run Solar

Bloomfield Township, Jackson County, Ohio

Visual Resource Assessment



Viewpoint 3

View looking south from Luther Jones Rd in the Township of Bloomfield, Jackson County, Ohio

Landscape Similarity Zone:
Forest

User Group:
Local Residents

Visually Sensitive Resource(s):
Ohio's Hill Country Heritage Area

Coordinates:
39.00472° N, 82.52246° W

Distance to Project:
76.2 feet

Elevation:
738.6 feet



Viewpoint 4

View looking southwest from Keystone Furnace Rd in the Township of Bloomfield, Jackson County, Ohio

Landscape Similarity Zone:
Developed

User Group:
Local Residents

Visually Sensitive Resource(s):
Ohio's Hill Country Heritage Area

Coordinates:
39.01109° N, 82.48938° W

Distance to Project:
769.2 feet

Elevation:
639.7 feet

Dixon Run Solar

Bloomfield Township, Jackson County, Ohio

Visual Resource Assessment



Viewpoint 5

View looking southwest from Dixon Run Rd in the Township of Bloomfield, Jackson County, Ohio

Landscape Similarity Zone:
Forest

User Group:
Local Residents

Visually Sensitive Resource(s):
Ohio's Hill Country Heritage Area

Coordinates:
38.99937° N, 82.48821° W

Distance to Project:
318.2 feet

Elevation:
656.7 feet



Viewpoint 6

View looking west-northwest from Dixon Run Rd in the Township of Bloomfield, Jackson County, Ohio

Landscape Similarity Zone:
Forest

User Group:
Local Residents

Visually Sensitive Resource(s):
Ohio's Hill Country Heritage Area

Coordinates:
38.98742° N, 82.50341° W

Distance to Project:
0.35 mile

Elevation:
687.9 feet

Dixon Run Solar

Bloomfield Township, Jackson County, Ohio

Visual Resource Assessment



Viewpoint 7

View looking north-northeast from Dixon Run Rd in the Township of Bloomfield, Jackson County, Ohio

Landscape Similarity Zone:
Cropland/Pasture

User Group:
Local Residents

Visually Sensitive Resource(s):
Ohio's Hill Country Heritage Area

Coordinates:
38.97843° N, 82.51502° W

Distance to Project:
0.43 mile

Elevation:
758.6 feet



Viewpoint 8

View looking north from Dixon Run Rd in the Township of Bloomfield, Jackson County, Ohio

Landscape Similarity Zone:
Developed

User Group:
Local Residents

Visually Sensitive Resource(s):
Ohio's Hill Country Heritage Area

Coordinates:
38.98114° N, 82.51220° W

Distance to Project:
0.26 mile

Elevation:
746.6 feet

Dixon Run Solar

Bloomfield Township, Jackson County, Ohio

Visual Resource Assessment



Viewpoint 9

View looking north-northwest
from Us Highway 35 in the
Township of Bloomfield, Jackson
County, Ohio

Landscape Similarity Zone:
Developed

User Group:
Local Residents, Through-Travelers

Visually Sensitive Resource(s):
US Hwy 35, Welsh Scenic Byway,
Ohio's Hill Country Heritage Area

Coordinates:
38.98284° N, 82.52742° W

Distance to Project:
956.8 feet

Elevation:
759.6 feet



Viewpoint 10

View looking east-northeast
from Luther Jones Rd in the
Township of Bloomfield, Jackson
County, Ohio

Landscape Similarity Zone:
Cropland/Pasture

User Group:
Local Residents

Visually Sensitive Resource(s):
Ohio's Hill Country Heritage Area

Coordinates:
39.00078° N, 82.51666° W

Distance to Project:
108.2 feet

Elevation:
803.3 feet

Dixon Run Solar

Bloomfield Township, Jackson County, Ohio

Visual Resource Assessment



Viewpoint 11

View looking west from Luther Jones Rd in the Township of Bloomfield, Jackson County, Ohio

Landscape Similarity Zone:
Cropland/Pasture

User Group:
Local Residents

Visually Sensitive Resource(s):
Ohio's Hill Country Heritage Area

Coordinates:
38.99687° N, 82.51406° W

Distance to Project:
97.8 feet

Elevation:
870.7 feet



Viewpoint 12

View looking north-northeast from Vega Rd in the Township of Bloomfield, Jackson County, Ohio

Landscape Similarity Zone:
Cropland/Pasture

User Group:
Local Residents, Tourists/Recreational Users

Visually Sensitive Resource(s):
Vega Cemetery, Vega, Ohio's Hill Country Heritage Area

Coordinates:
38.95809° N, 82.49734° W

Distance to Project:
2.01 miles

Elevation:
902.3 feet

Dixon Run Solar

Bloomfield Township, Jackson County, Ohio

Visual Resource Assessment

Viewpoint 13

View looking south from Pattonsville Rd in the Township of Bloomfield, Jackson County, Ohio



Landscape Similarity Zone:
Forest

User Group:
Local Residents, Tourists/recreational Users

Visually Sensitive Resource(s):
Andrews Cemetery, Ohio's Hill Country Heritage Area

Coordinates:
39.01907° N, 82.47743° W

Distance to Project:
0.92 mile

Elevation:
885.1 feet

Viewpoint 14

View looking west-northwest from Keystone Furnace Rd in the Township of Bloomfield, Jackson County, Ohio



Landscape Similarity Zone:
Forest

User Group:
Local Residents

Visually Sensitive Resource(s):
Ohio's Hill Country Heritage Area

Coordinates:
39.00699° N, 82.47870° W

Distance to Project:
0.44 mile

Elevation:
646.2 feet

Dixon Run Solar

Bloomfield Township, Jackson County, Ohio

Visual Resource Assessment



Viewpoint 15

View looking south from
Keystone Furnace Rd in the
Township of Bloomfield, Jackson
County, Ohio

Landscape Similarity Zone:
Developed

User Group:
Local Residents

Visually Sensitive Resource(s):
Ridgeland, Ohio's Hill Country
Heritage Area

Coordinates:
39.01406° N, 82.51970° W

Distance to Project:
0.45 mile

Elevation:
669.2 feet



Viewpoint 16

View looking southwest from
Union Cemetery Rd in the
Township of Bloomfield, Jackson
County, Ohio

Landscape Similarity Zone:
Forest

User Group:
Local Residents, Tourists/Recreational
Users

Visually Sensitive Resource(s):
Union Cemetery, Bloomfield
Township, Ohio's Hill Country
Heritage Area

Coordinates:
39.01939° N, 82.53254° W

Distance to Project:
1.03 miles

Elevation:
795.0 feet

Dixon Run Solar

Bloomfield Township, Jackson County, Ohio

Visual Resource Assessment



Viewpoint 17

View looking south-southeast from SR-327 in the Township of Bloomfield, Jackson County, Ohio

Landscape Similarity Zone:
Developed

User Group:
Local Residents, Through-Travelers

Visually Sensitive Resource(s):
State Rte 327, Ohio's Hill Country Heritage Area

Coordinates:
39.02264° N, 82.52818° W

Distance to Project:
1.12 miles

Elevation:
694.0 feet

Viewpoint selected for the Production of a Visual Simulation



Viewpoint 18

View looking south from SR-327 in the Township of Milton, Jackson County, Ohio

Landscape Similarity Zone:
Developed

User Group:
Local Residents, Through-Travelers

Visually Sensitive Resource(s):
State Rte 327, Ohio's Hill Country Heritage Area

Coordinates:
39.04886° N, 82.53934° W

Distance to Project:
2.84 miles

Elevation:
727.2 feet

Dixon Run Solar

Bloomfield Township, Jackson County, Ohio

Visual Resource Assessment



Viewpoint 19

View looking southeast from
Keystone Furnace Rd in the
Township of Bloomfield, Jackson
County, Ohio

Landscape Similarity Zone:
Cropland/Pasture

User Group:
Local Residents

Visually Sensitive Resource(s):
Ohio's Hill Country Heritage Area

Coordinates:
39.01431° N, 82.53010° W

Distance to Project:
0.66 mile

Elevation:
696.1 feet



Viewpoint 20

View looking east from SR-327
in the Township of Bloomfield,
Jackson County, Ohio

Landscape Similarity Zone:
Developed

User Group:
Local Residents, Through-Travelers

Visually Sensitive Resource(s):
State Rte 327, US Hwy 35, Welsh
Scenic Byway, Ohio's Hill Country
Heritage Area

Coordinates:
38.99478° N, 82.53994° W

Distance to Project:
0.40 mile

Elevation:
696.9 feet

Dixon Run Solar

Bloomfield Township, Jackson County, Ohio

Visual Resource Assessment

Viewpoint 21

View looking east from Dixon Run Rd in the Township of Bloomfield, Jackson County, Ohio



Landscape Similarity Zone:
Developed

User Group:
Local Residents, Through-Travelers,
Tourists/Recreational Users

Visually Sensitive Resource(s):
Symmes Creek, US Hwy 35, Welsh Scenic Byway, Ohio's Hill Country Heritage Area

Coordinates:
38.99661° N, 82.55218° W
Distance to Project:
1.07 miles

Elevation:
736.0 feet

Viewpoint 22

View looking east-northeast from Winchester Cemetary Rd in the Township of Bloomfield, Jackson County, Ohio



Landscape Similarity Zone:
Forest

User Group:
Local Residents, Through-Travelers,
Tourists/Recreational Users

Visually Sensitive Resource(s):
Winchester Cemetery, Rocky Hill, Winchester, US Hwy 35, Welsh Scenic Byway, Ohio's Hill Country Heritage Area

Coordinates:
38.98984° N, 82.53922° W
Distance to Project:
0.33 mile

Elevation:
768.0 feet

Viewpoint selected for the Production of a Visual Simulation

Dixon Run Solar

Bloomfield Township, Jackson County, Ohio

Visual Resource Assessment

Viewpoint 23

View looking northwest from Dixon Run Rd in the Township of Bloomfield, Jackson County, Ohio



Landscape Similarity Zone:
Cropland/Pasture

User Group:
Local Residents, Through-Travelers,
Tourists/Recreational Users

Visually Sensitive Resource(s):
US Hwy 35, Welsh Scenic Byway,
Ohio's Hill Country Heritage Area

Coordinates:
38.98152° N, 82.53105° W

Distance to Project:
0.39 mile

Elevation:
725.8 feet

Viewpoint 24

View looking west-southwest from Luther Jones Rd in the Township of Bloomfield, Jackson County, Ohio



Landscape Similarity Zone:
Forest

User Group:
Local Residents

Visually Sensitive Resource(s):
Ohio's Hill Country Heritage Area

Coordinates:
38.99667° N, 82.49490° W

Distance to Project:
679.9 feet

Elevation:
671.2 feet

Dixon Run Solar

Bloomfield Township, Jackson County, Ohio

Visual Resource Assessment



Viewpoint 25

View looking northeast from Luther Jones Rd in the Township of Bloomfield, Jackson County, Ohio

Landscape Similarity Zone:
Forest

User Group:
Local Residents

Visually Sensitive Resource(s):
Ohio's Hill Country Heritage Area

Coordinates:
38.99718° N, 82.50608° W

Distance to Project:
110.8 feet

Elevation:
765.0 feet



Viewpoint 26

View looking east-northeast from Luther Jones Rd in the Township of Bloomfield, Jackson County, Ohio

Landscape Similarity Zone:
Cropland/Pasture

User Group:
Local Residents

Visually Sensitive Resource(s):
Ohio's Hill Country Heritage Area

Coordinates:
38.99744° N, 82.50806° W

Distance to Project:
85.9 feet

Elevation:
810.0 feet

Viewpoint selected for the Production of a Visual Simulation

Dixon Run Solar

Bloomfield Township, Jackson County, Ohio

Visual Resource Assessment



Viewpoint 27

View looking north-northeast
from Luther Jones Rd in the
Township of Bloomfield, Jackson
County, Ohio

Landscape Similarity Zone:
Cropland/Pasture

User Group:
Local Residents

Visually Sensitive Resource(s):
Ohio's Hill Country Heritage Area

Coordinates:
38.99621° N, 82.51163° W

Distance to Project:
130.1 feet

Elevation:
854.1 feet



Viewpoint 28

View looking north-northeast
from Luther Jones Rd in the
Township of Bloomfield, Jackson
County, Ohio

Landscape Similarity Zone:
Cropland/Pasture

User Group:
Local Residents

Visually Sensitive Resource(s):
Ohio's Hill Country Heritage Area

Coordinates:
38.99740° N, 82.51409° W

Distance to Project:
111.4 feet

Elevation:
877.0 feet

Viewpoint selected for the
Production of a Visual Simulation

Dixon Run Solar

Bloomfield Township, Jackson County, Ohio

Visual Resource Assessment

Viewpoint 29

View looking north from Luther Jones Rd in the Township of Bloomfield, Jackson County, Ohio



Landscape Similarity Zone:
Cropland/Pasture

User Group:
Local Resident

Visually Sensitive Resource(s):
Ohio's Hill Country Heritage Area

Coordinates:
38.99919° N, 82.51495° W

Distance to Project:
112.8 feet

Elevation:
834.4 feet

Viewpoint 30

View looking southeast from Luther Jones Rd in the Township of Bloomfield, Jackson County, Ohio



Landscape Similarity Zone:
Forest

User Group:
Local Residents

Visually Sensitive Resource(s):
Ohio's Hill Country Heritage Area

Coordinates:
39.00644° N, 82.52337° W

Distance to Project:
106.6 feet

Elevation:
781.3 feet

Dixon Run Solar

Bloomfield Township, Jackson County, Ohio

Visual Resource Assessment



Viewpoint 31

View looking east-southeast from US Highway 35 in the Township of Bloomfield, Jackson County, Ohio

Landscape Similarity Zone:
Developed

User Group:
Local Residents, Through-Travelers,
Tourists/Recreational Users

Visually Sensitive Resource(s):
US Hwy 35, Welsh Scenic Byway,
Ohio's Hill Country Heritage Area

Coordinates:
38.98716° N, 82.53198° W

Distance to Project:
415.1 feet

Elevation:
722.6 feet



Viewpoint 32

View looking east-southeast from US Highway 35 in the Township of Bloomfield, Jackson County, Ohio

Landscape Similarity Zone:
Developed

User Group:
Local Residents, Through-Travelers,
Tourists/Recreational Users

Visually Sensitive Resource(s):
US Hwy 35, Welsh Scenic Byway,
Ohio's Hill Country Heritage Area

Coordinates:
38.99656° N, 82.54618° W

Distance to Project:
.76 mile

Elevation:
753.8 feet

Dixon Run Solar

Bloomfield Township, Jackson County, Ohio

Visual Resource Assessment

Appendix B

Location of Visually Sensitive Resources

Bloomfield Township
Jackson County, Ohio

Visual Resource Assessment



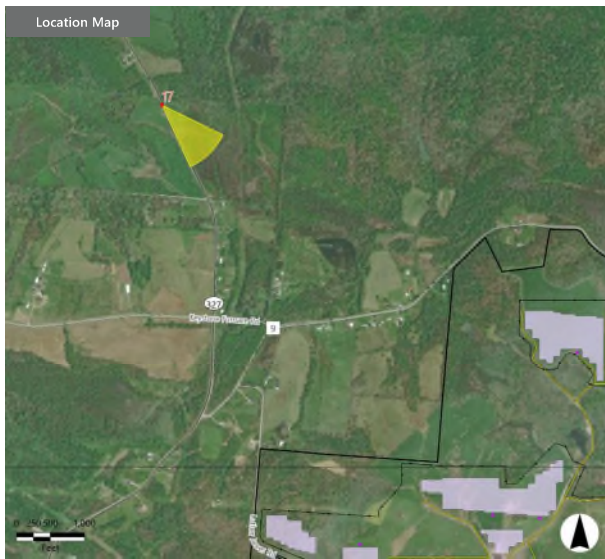
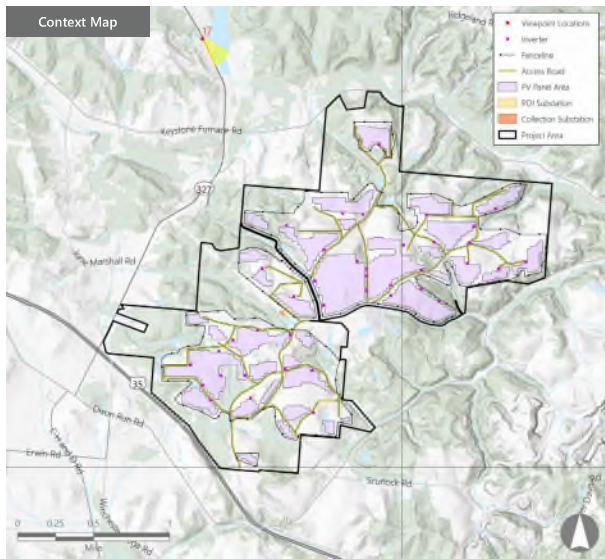
Appendix C

Visual Simulations

Appendix C. Visual Simulations



Note: The image photograph series above was captured from State Route 327 panning clockwise from northeast (left) to south (right).



VIEWPOINT 17
State Route 327

VIEWPOINT INFORMATION

Location: State Route 327
Town: Bloomfield
County: Jackson
Latitude: 39.02264° N
Longitude: 82.52818° W
Viewing Distance*: 6,006.5 feet (1.1 miles)

VISUAL CHARACTER INFORMATION

Landscape Similarity Zone: Developed
Distance Zone: Foreground
Viewer/User Group(s): Local Residents, Through-Travelers
Visually Sensitive Resource(s): Ohio's Hill Country Heritage Area, State Rte 327

PHOTOGRAPH INFORMATION

Date Taken: July 14, 2021
Time: 11:44 AM
Camera: Nikon D7200
Resolution: 24.1 Megapixels
Lens Focal Length (35mm equivalent): 51 mm
Camera Elevation: 694 feet
Field of View: 39.2 degrees
View Orientation: South-Southeast
Printed Size: 10" x 15"
Viewing Distance**: 22"

NOTES

*Distance as measured from the viewpoint to the Facility (in feet) within the simulated photograph's field of view

**The simulation is at the correct perspective when printed on an 11-by-17 sheet at full scale, and viewed approximately 22 inches from the eye of the viewer.

Dixon Run Solar
Bloomfield Township, Jackson County, Ohio
Visual Resource Assessment

EDR



Note: Printed at actual size, the resulting simulation image is 15 inches wide by 10 inches high. At this size and focal length, the simulation should be viewed from a distance 22 inches from the eye of the viewer.

0 1m 2m
This scale is designed to assist the evaluation images are
printed at the intended size.

VIEWPOINT 17
State Route 317

Dixon Run Solar
Bloomfield Township, Jackson County, Ohio

EDR



Note: Printed at actual size, the resulting simulation image is 15 inches wide by 10 inches high. At this size and focal length, the simulation should be viewed from a distance 22 inches from the eye of the viewer.

0 1m 2m
This scale is designed to assist the evaluation images are
printed at the intended size.

VIEWPOINT T7
State Route 317

Dixon Run Solar
Bloomfield Township, Jackson County, Ohio
EDR

Appendix C. Visual Simulations



Note: The image photograph series above was captured from Winchester Cemetery Road panning clockwise from northwest (left) to east (right).

VIEWPOINT 22
Winchester Cemetery Road

VIEWPOINT INFORMATION

Location: Winchester Cemetery Road
Town: Bloomfield
County: Jackson
Latitude: 38.98984° N
Longitude: 82.53922° W
Viewing Distance*: 1,734.5 feet

VISUAL CHARACTER INFORMATION

Landscape Similarity Zone: Forest
Distance Zone: Near-foreground
Viewer/User Group(s): Local Residents
Visually Sensitive Resource(s):
Winchester Cemetery, Rocky Hill, Winchester, US
Hwy 35, Welsh Scenic Byway, Ohio's Hill Country
Heritage Area

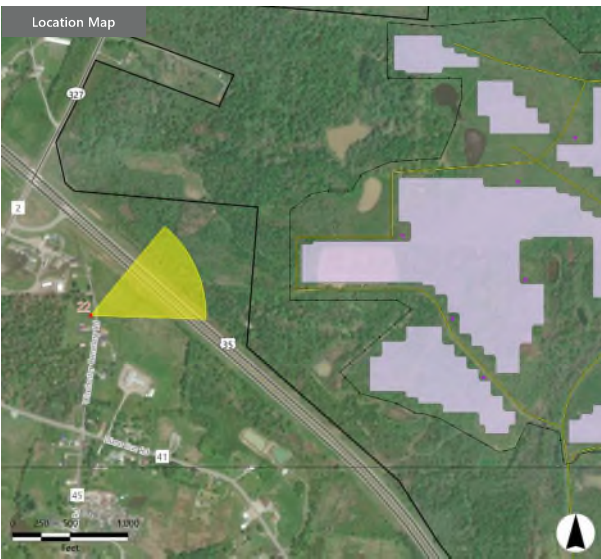
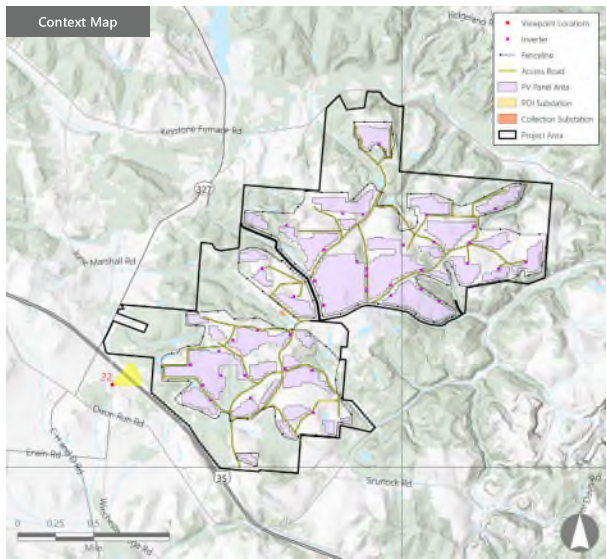
PHOTOGRAPH INFORMATION

Date Taken: July 14, 2021
Time: 2:00 PM
Camera: Nikon D7200
Resolution: 24.1 Megapixels
Lens Focal Length (35mm equivalent): 36 mm
Camera Elevation: 768 feet
Field of View: 52.2 degrees
View Orientation: East-Northeast
Printed Size: 10" x 15"
Viewing Distance:** 15'

NOTES

*Distance as measured from the viewpoint to the Facility (in feet) within the simulated photograph's field of view

**The simulation is at the correct perspective when printed on an 11-by-17 sheet at full scale, and viewed approximately 15 inches from the eye of the viewer.



Dixon Run Solar
Bloomfield Township, Jackson County, Ohio
Visual Resource Assessment

EDR

EXISTING CONDITIONS



Note: Printed at actual size, the resulting simulation image is 15 inches wide by 10 inches high. At this size and focal length, the simulation should be viewed from a distance 15 inches from the eye of the viewer.

0 1m 2m
This scale is designed to assist the simulation images are
printed at the intended scale.

VIEWPOINT 22
Winchester Cemetery Road

Dixon Run Solar
Bloomfield Township, Jackson County, Ohio
EDR

SIMULATION (INSTALLATION)



Note: Printed at actual size, the resulting simulation image is 15 inches wide by 10 inches high. At this size and focal length, the simulation should be viewed from a distance 15 inches from the eye of the viewer.

0 1m 2m
This scale is designed to assist the simulation image size
printed at the intended scale.

VIEWPOINT 22
Winchester Cemetery Road

Dixon Run Solar
Bloomfield Township, Jackson County, Ohio

EDR

Appendix C. Visual Simulations



Note: The image photograph series above was captured from Luther Jones Road panning clockwise from northwest (left) to east (right).

VIEWPOINT 26
Luther Jones Road

VIEWPOINT INFORMATION

Location: Luther Jones Road
Town: Bloomfield
County: Jackson
Latitude: 38.99744° N
Longitude: 82.50806° W
Viewing Distance*: 92.9 feet

VISUAL CHARACTER INFORMATION

Landscape Similarity Zone: Cropland/Pasture
Distance Zone: Near-foreground
Viewer/User Group(s): Local Residents
Visually Sensitive Resource(s): Ohio's Hill Country Heritage Area

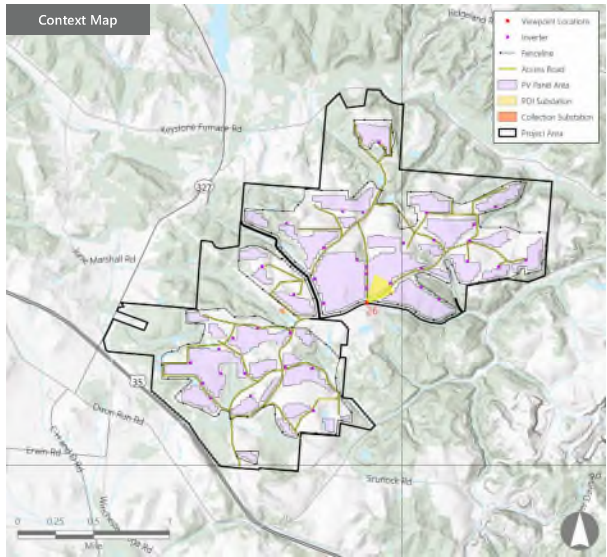
PHOTOGRAPH INFORMATION

Date Taken: July 14, 2021
Time: 2:40 PM
Camera: Nikon D7200
Resolution: 24.1 Megapixels
Lens Focal Length (35mm equivalent): 36 mm
Camera Elevation: 810 feet
Field of View: 51.2 degrees
View Orientation: East-Northeast
Printed Size: 10" x 15"
Viewing Distance*: 15"

NOTES

*Distance as measured from the viewpoint to the Facility (in feet) within the simulated photograph's field of view

**The simulation is at the correct perspective when printed on an 11-by-17 sheet at full scale, and viewed approximately 15 inches from the eye of the viewer.



Dixon Run Solar
Bloomfield Township, Jackson County, Ohio
Visual Resource Assessment

EDR

EXISTING CONDITIONS



Note: Printed at actual size, the resulting simulation image is 15 inches wide by 10 inches high. At this size and focal length, the simulation should be viewed from a distance 15 inches from the eye of the viewer.

0 1m 2m
This aerial is designed to provide the simulation images are
printed at the intended scale.

VIEWPOINT 26
Luther Jones Road

Dixon Run Solar
Bloomfield Township, Jackson County, Ohio

EDR



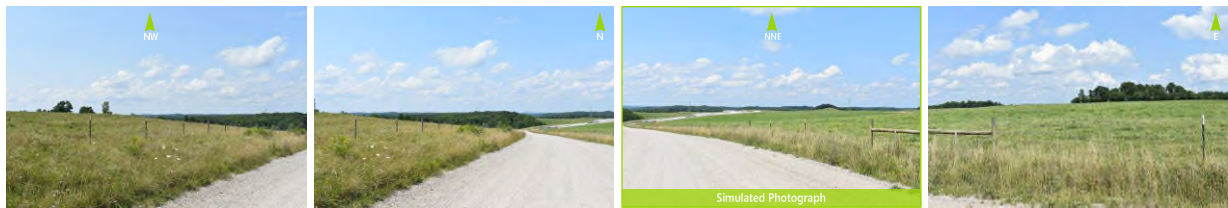
Note: Printed at actual size, the resulting simulation image is 15 inches wide by 10 inches high. At this size and focal length, the simulation should be viewed from a distance 15 inches from the eye of the viewer.

0 1m 2m
This scale is designed to ensure the simulation images are printed at the intended size.

VIEWPOINT 26
Luther Jones Road

Dixon Run Solar
Bloomfield Township, Jackson County, Ohio
EDR

Appendix C. Visual Simulations



Note: The image photograph series above was captured from Luther Jones Road panning clockwise from northwest (left) to east (right).

VIEWPOINT 28
Luther Jones Road

VIEWPOINT INFORMATION

Location: Luther Jones Road
Town: Bloomfield
County: Jackson
Latitude: 38.99740° N
Longitude: 82.51409° W
Viewing Distance*: 162.9 feet

VISUAL CHARACTER INFORMATION

Landscape Similarity Zone: Cropland/Pasture
Distance Zone: Near-Foreground
Viewer/User Group(s): Local Residents
Visually Sensitive Resource(s): Ohio's Hill Country
Heritage Area

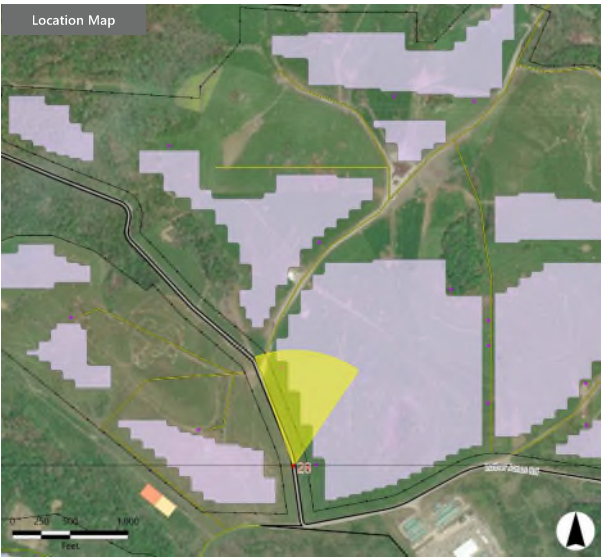
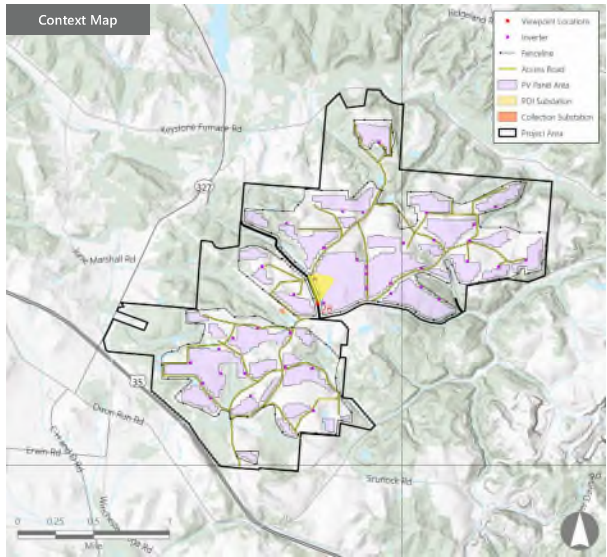
PHOTOGRAPH INFORMATION

Date Taken: July 14, 2021
Time: 11:44 AM
Camera: Nikon D7200
Resolution: 24.1 Megapixels
Lens Focal Length (35mm equivalent): 36 mm
Camera Elevation: 877 feet
Field of View: 53.6 degrees
View Orientation: North-Northeast
Printed Size: 10" x 15"
Viewing Distance**: 15"

NOTES

*Distance as measured from the viewpoint to the Facility (in feet) within the simulated photograph's field of view

**The simulation is at the correct perspective when printed on an 11-by-17 sheet at full scale, and viewed approximately 15 inches from the eye of the viewer.



Dixon Run Solar
Bloomfield Township, Jackson County, Ohio
Visual Resource Assessment

EDR

EXISTING CONDITIONS



Note: Printed at actual size, the resulting simulation image is 15 inches wide by 10 inches high. At this size and focal length, the simulation should be viewed from a distance 15 inches from the eye of the viewer.

0 1m 2m
This scale is designed to assist the viewer in understanding the scale of the simulation image and is not intended to be used for any other purpose.

VIEWPOINT 28
Luther Jones Road

Dixon Run Solar
Bloomfield Township, Jackson County, Ohio

EDR

SIMULATION (INSTALLATION)



Note: Printed at actual size, the resulting simulation image is 15 inches wide by 10 inches high. At this size and focal length, the simulation should be viewed from a distance 15 inches from the eye of the viewer.

0 1m 2m
This scale is designed to assist the viewer in understanding the size of the simulated image and is not intended to be used as a scale for the actual project.

VIEWPOINT 28
Luther Jones Road

Dixon Run Solar
Bloomfield Township, Jackson County, Ohio

EDR

Appendix D

Visually Sensitive Resources Analysis

| Visually Sensitive Resource | Location | | VP Number ¹ | Distance ² | | Distance Zone | Project Visibility (Viewshed Results) | | |
|--|--------------------------------|----------------|------------------------|-----------------------------|-----------------------|---------------|---------------------------------------|---------------|-----------------------|
| | Town | County | | Miles from Nearest PV Panel | Miles from Substation | | +Visible | - Not Visible | +/- Partially Visible |
| | | | | | | | | | |
| Properties of Historic Significance | | | | | | | | | |
| National/State Historic Landmarks | | | | | | | | | |
| None in Study Area | | | | | | | | | |
| National/State Historic Sites | | | | | | | | | |
| None in Study Area | | | | | | | | | |
| Sites Listed on National or State Registers of Historic Places (NRHP/SRHP) | | | | | | | | | |
| Keystone Furnace | Bloomfield Township | Jackson County | | 1.7 | 3.5 | ● | - | - | |
| Buckeye Furnace Covered Bridge | Milton Township | Jackson County | | 3.5 | 5.1 | ● | - | - | |
| Buckeye Furnace | Milton Township | Jackson County | | 3.5 | 5.1 | ● | - | - | |
| Evans House | Huntington Township | Gallia County | | 3.7 | 5.0 | ● | - | - | |
| Battle of Berlin Heights Engagement Site | Lick Township, Milton Township | Jackson County | | 4.8 | 5.8 | ● | - | - | |
| Sites Eligible for Listing on NRHP or SRHP | | | | | | | | | |
| None in Study Area | | | | | | | | | |
| OH Historic Structures | | | | | | | | | |
| Oglesbee 1 (Keystone Furnace Rd) | Bloomfield Township | Jackson County | | 0.3 | 1.9 | ● | +/- | - | |
| Daniel Patterson House (TR 150) | Bloomfield Township | Jackson County | | 1.0 | 2.0 | ● | - | - | |
| Bloomfield Tipple (150 ft W of CR 10 near TR 725) | Bloomfield Township | Jackson County | | 1.1 | 2.8 | ● | - | - | |
| Morgan House (end of TR 960 Morgan Rd) | Bloomfield Township | Jackson County | | 1.3 | 2.1 | ● | - | - | |
| Limestone Furnace (C H & D Rd, S Central 1/4 Sect 32) | Bloomfield Township | Jackson County | | 1.9 | 2.9 | ● | - | - | |
| Keystone Furnace (CR 9200 ft E of Little Raccoon) | Bloomfield Township | Jackson County | | 2.0 | 3.7 | ● | - | - | |
| Madison Furnace (SEC Sect 5NR TR 130) | Madison Township | Jackson County | | 3.0 | 3.9 | ● | - | - | |
| Buckeye Furnace Office and Company Store (123 Buckeye Park Rd (TR167)) | Milton Township | Jackson County | | 3.6 | 5.1 | ● | - | - | |
| Buckeye Furnace Covered Bridge (123 Buckeye Park Rd (TR 167)) | Milton Township | Jackson County | | 3.6 | 5.1 | ● | - | - | |
| House, Buckeye Furnace (123 Buckeye Park Rd (TR 167)) | Milton Township | Jackson County | | 3.6 | 5.2 | ● | - | - | |
| Charcoal Shed, Buckeye Furnace (123 Buckeye Park Rd (TR 167)) | Milton Township | Jackson County | | 3.7 | 5.3 | ● | - | - | |
| Casting Shed, Buckeye Furnace (123 Buckeye Park Rd (TR 167)) | Milton Township | Jackson County | | 3.7 | 5.3 | ● | - | - | |
| Engine House, Buckeye Furnace (123 Buckeye Park Rd (TR 167)) | Milton Township | Jackson County | | 3.7 | 5.3 | ● | - | - | |
| Charging House, Buckeye Furnace (123 Buckeye Park Rd (TR 167)) | Milton Township | Jackson County | | 3.7 | 5.3 | ● | - | - | |
| Buckeye Furnace (123 Buckeye Park Rd (TR 167)) | Milton Township | Jackson County | | 3.7 | 5.2 | ● | - | - | |

Dixon Run Solar

Bloomfield Township, Jackson County, Ohio

Visual Resource Assessment

Sheet 1 of 7

| | Location | | | Distance ² | | Distance Zone | Project Visibility (Viewshed Results) | | |
|---|---------------------|----------------|------------------------------|-----------------------------|-----------------------|--|--|--|-----------------------|
| | Town | County | | Miles from Nearest PV Panel | Miles from Substation | | +Visible | - Not Visible | +/- Partially Visible |
| Visually Sensitive Resource | | | VP Number¹ | | | Near-Foreground Foreground Midground Background | PV Panel DSM Viewshed (Topography, Structures, and Vegetation) | Substation DSM Viewshed (Topography, Structures, and Vegetation) | |
| Jim Alley Chapel (Willow Church Rd) | Huntington Township | Gallia County | | 4.7 | 6.5 | * | - | - | - |
| Dr William Sylvester House (NWC SR 327 & SR 124) | Milton Township | Jackson County | | 4.8 | 5.8 | * | - | - | - |
| Roads Missionary Baptist (off SR 124, W of SR 32) | Milton Township | Jackson County | | 4.9 | 5.9 | * | - | - | - |
| A Wilcox Farm (Lew Jones Rd) | Huntington Township | Gallia County | | 5.0 | 6.7 | * | - | - | - |
| Historic Bridges | | | | | | | | | |
| Buckeye Furnace Covered Bridge | Milton Township | Jackson County | | 3.5 | 5.1 | | - | - | - |
| OGS Cemeteries | | | | | | | | | |
| Dixon Run Cemetery | Bloomfield Township | Jackson County | 1 | 0.3 | 1.2 | | - | - | - |
| Winchester Cemetery | Bloomfield Township | Jackson County | 22 | 0.3 | 1.2 | | +/- | - | - |
| Marcum Cemetery | Bloomfield Township | Jackson County | | 0.6 | 1.5 | | +/- | - | - |
| Frasure-(Fraser) Cemetery | Bloomfield Township | Jackson County | | 0.8 | 1.6 | | - | - | - |
| Pennington Cemetery | Bloomfield Township | Jackson County | | 0.9 | 2.3 | | - | - | - |
| Andrews Cemetery | Bloomfield Township | Jackson County | 13 | 0.9 | 2.6 | | +/- | - | +/- |
| Ward Cemetery | Bloomfield Township | Jackson County | | 0.9 | 1.8 | | +/- | - | +/- |
| Campbell-Hurt Cemetery | Bloomfield Township | Jackson County | | 1.0 | 2.7 | | - | - | - |
| Union Cemetery, Bloomfield Township | Bloomfield Township | Jackson County | 16 | 1.0 | 1.7 | | - | - | - |
| McClure Cemetery | Bloomfield Township | Jackson County | | 1.1 | 1.9 | | +/- | - | +/- |
| Six Brothers Cemetery | Bloomfield Township | Jackson County | | 1.2 | 1.9 | | +/- | - | +/- |
| Scurlock Cemetery | Bloomfield Township | Jackson County | | 1.3 | 2.7 | | - | - | - |
| Price Cemetery, Bloomfield Township | Bloomfield Township | Jackson County | | 1.4 | 2.8 | | - | - | - |
| Pattonsville-Pattonsville Community Cemetery | Bloomfield Township | Jackson County | | 1.4 | 2.7 | | +/- | - | +/- |
| Keystone Cemetery | Bloomfield Township | Jackson County | | 1.6 | 3.3 | | +/- | - | +/- |
| Perkins Cemetery | Bloomfield Township | Jackson County | | 1.7 | 3.5 | | - | - | - |
| Bethania-(Bethana) Cemetery | Bloomfield Township | Jackson County | | 1.9 | 2.7 | | - | - | - |
| Vega Cemetery | Bloomfield Township | Jackson County | 12 | 2.0 | 2.9 | | - | - | - |
| Lackey Cemetery | Bloomfield Township | Jackson County | | 2.3 | 3.1 | | - | - | - |
| Long Cemetery, Bloomfield Township | Bloomfield Township | Jackson County | | 2.5 | 4.3 | | - | - | - |

| Visually Sensitive Resource | Location | | VP Number ¹ | Distance ² | | Distance Zone | Project Visibility (Viewshed Results) | |
|---|--|----------------|------------------------|-----------------------------|-----------------------|--|--|--|
| | Town | County | | Miles from Nearest PV Panel | Miles from Substation | <div><div></div><div></div><div></div><div></div></div> <div>Near-Foreground Foreground Midground Background</div> | ±Visible ± Not Visible | ±/- Partially Visible |
| | | | | | | | PV Panel DSM Viewshed (Topography, Structures, and Vegetation) | Substation DSM Viewshed (Topography, Structures, and Vegetation) |
| Alexander-Roosevelt Cemetery | Bloomfield Township, Franklin Township | Jackson County | | 2.6 | 3.5 | <div><div></div></div> | - | - |
| Madison Furnace-Callaghan Farm Cemetery | Madison Township | Jackson County | | 2.7 | 3.7 | <div><div></div></div> | - | - |
| Zoar Cemetery | Madison Township | Jackson County | | 2.7 | 3.7 | <div><div></div></div> | +/- | +/- |
| Hale Cemetery | Franklin Township | Jackson County | | 2.8 | 3.4 | <div><div></div></div> | - | - |
| Unnamed Cemetery | Franklin Township | Jackson County | | 2.8 | 3.3 | <div><div></div></div> | - | - |
| Madison Cemetery | Madison Township | Jackson County | | 2.9 | 3.8 | <div><div></div></div> | - | - |
| Keeton Cemetery | Bloomfield Township | Jackson County | | 2.9 | 4.2 | <div><div></div></div> | - | - |
| Webb Cemetery | Franklin Township | Jackson County | | 2.9 | 3.8 | <div><div></div></div> | - | - |
| Bethlehem Cemetery | Bloomfield Township | Jackson County | | 2.9 | 3.8 | <div><div></div></div> | - | - |
| Buckley Cemetery | Franklin Township | Jackson County | | 3.0 | 3.8 | <div><div></div></div> | +/- | +/- |
| Long Cemetery, Huntington Township | Huntington Township | Gallia County | | 3.1 | 4.7 | <div><div></div></div> | - | - |
| Westlake Cemetery | Franklin Township | Jackson County | | 3.2 | 4.0 | <div><div></div></div> | - | - |
| Carmel Cemetery | Bloomfield Township | Jackson County | | 3.2 | 4.0 | <div><div></div></div> | - | - |
| Bentley Cemetery | Lick Township | Jackson County | | 3.3 | 3.9 | <div><div></div></div> | - | - |
| McGhee Cemetery | Milton Township | Jackson County | | 3.5 | 4.4 | <div><div></div></div> | +/- | +/- |
| Buckeye Cemetery, Milton Township | Milton Township | Jackson County | | 3.6 | 5.1 | <div><div></div></div> | - | - |
| Nickel Cemetery | Milton Township | Jackson County | | 3.7 | 5.3 | <div><div></div></div> | - | - |
| Parker Cemetery | Huntington Township | Gallia County | | 3.7 | 5.4 | <div><div></div></div> | - | - |
| Old Union Cemetery | Madison Township | Jackson County | | 3.9 | 4.9 | <div><div></div></div> | - | - |
| Clay Cemetery | Madison Township | Jackson County | | 3.9 | 4.9 | <div><div></div></div> | - | - |
| Brady Cemetery | Franklin Township | Jackson County | | 4.0 | 4.8 | <div><div></div></div> | - | - |
| Anderson Cemetery | Huntington Township | Gallia County | | 4.0 | 5.6 | <div><div></div></div> | - | - |
| Bethesda Cemetery | Madison Township | Jackson County | | 4.1 | 4.9 | <div><div></div></div> | - | - |
| Franklin Valley-(Franklin) Cemetery | Franklin Township | Jackson County | | 4.2 | 5.0 | <div><div></div></div> | - | - |
| Callaghan/Calahan-(Calahan) Cemetery | Franklin Township | Jackson County | | 4.3 | 5.2 | <div><div></div></div> | - | - |
| Ratcliff Cemetery | Franklin Township | Jackson County | | 4.3 | 4.9 | <div><div></div></div> | - | - |
| Cooney-Leach Cemetery | Wilkesville Township | Vinton County | | 4.4 | 6.2 | <div><div></div></div> | - | - |

Dixon Run Solar













Bloomfield Township, Jackson County, Ohio

Visual Resource Assessment

Sheet 3 of 7

| | Location | | | Distance ² | | Distance Zone | Project Visibility (Viewshed Results) | | |
|---|--|-------------------------------|------------------------------|-----------------------------|-----------------------|--|--|---------------|--|
| | Town | County | | Miles from Nearest PV Panel | Miles from Substation | | +Visible | - Not Visible | +/- Partially Visible |
| Visually Sensitive Resource | | | VP Number¹ | | | Near-Foreground Foreground Midground Background | PV Panel DSM Viewshed (Topography, Structures, and Vegetation) | | Substation DSM Viewshed (Topography, Structures, and Vegetation) |
| McGlothin Cemetery | Huntington Township | Gallia County | | 4.4 | 5.9 | * | - | - | - |
| Salem Cemetery | Milton Township | Jackson County | | 4.4 | 5.7 | * | - | - | - |
| Arthur Cemetery | Jefferson Township | Jackson County | | 4.6 | 5.5 | * | - | - | - |
| African American Baptist (Baptist) Cemetery | Milton Township | Jackson County | | 4.6 | 5.7 | * | - | - | - |
| Stewart-Nooks Cemetery | Milton Township | Jackson County | | 4.6 | 5.7 | * | - | - | - |
| Mercer Cemetery | Franklin Township | Jackson County | | 4.7 | 5.4 | * | - | - | - |
| Jackson County Infirmary Cemetery | City of Jackson | Jackson County | | 4.7 | 5.2 | * | - | - | - |
| Old Bunn Cemetery | Franklin Township | Jackson County | | 4.7 | 5.4 | * | - | - | - |
| Hoy Cemetery | Milton Township | Jackson County | | 4.7 | 6.0 | * | - | - | - |
| Rehobeth-Evans Cemetery | Raccoon Township | Gallia County | | 4.8 | 5.8 | * | - | - | - |
| Keenan-Lively-Sullivan Cemetery | Lick Township | Jackson County | | 4.9 | 5.8 | * | - | - | - |
| Hildenbrand Cemetery | Lick Township | Jackson County | | 5.0 | 5.6 | * | - | - | - |
| Rice Cemetery | Lick Township | Jackson County | | 5.1 | 5.7 | * | - | - | - |
| Evans Cemetery | Madison Township | Jackson County | | 5.1 | 5.9 | * | - | - | - |
| Stiffler Cemetery | Franklin Township | Jackson County | | 5.3 | 6.0 | * | - | - | - |
| Masters Cemetery | Franklin Township | Jackson County | | 5.3 | 6.1 | * | - | - | - |
| Ohio Historical Marker | | | | | | | | | |
| 1-40 Buckeye Furnace | Milton Township | Jackson County | | 3.6 | 5.1 | ● | - | - | - |
| Designated Scenic Resources | | | | | | | | | |
| Rivers Designated as National or State Wild, Scenic or Recreational | | | | | | | | | |
| None in Study Area | | | | | | | | | |
| Sites, Areas, Lakes, Reservoirs or Highways Designated or Eligible for Designation as Scenic | | | | | | | | | |
| Welsh Scenic Byway | Raccoon Township, Bloomfield Township, Franklin Township, Jefferson Township, Lick Township, Madison Township, City of Jackson | Gallia County, Jackson County | 9, 31, 32 | 0.1 | 1.0 | ● | +/- | | +/- |
| Other Designated Scenic Resources (Easements, Roads, Districts, and Overlooks) | | | | | | | | | |
| None in Study Area | | | | | | | | | |
| Public Lands and Recreational Resources | | | | | | | | | |
| National Parks, Recreation Areas, Seashores, and Forests | | | | | | | | | |

| | Location | | | Distance ² | | Distance Zone | Project Visibility (Viewshed Results) | |
|--|---|--|------------------------------|-----------------------------|-----------------------|--|--|--|
| | Town | County | | Miles from Nearest PV Panel | Miles from Substation | | +Visible - Not Visible | +/- Partially Visible |
| Visually Sensitive Resource | | | VP Number¹ | | | Near-Foreground Foreground Midground Background | PV Panel DSM Viewshed (Topography, Structures, and Vegetation) | Substation DSM Viewshed (Topography, Structures, and Vegetation) |
| None in Study Area | | | | | | | | |
| National Natural Landmarks | | | | | | | | |
| None in Study Area | | | | | | | | |
| National Wildlife Refuges | | | | | | | | |
| None in Study Area | | | | | | | | |
| Heritage Areas | | | | | | | | |
| Ohio's Hill Country Heritage Area | City of Jackson, Bloomfield Township, Coal Township, Franklin Township, Huntington Township, Jefferson Township, Lick Township, Madison Township, Milton Township, Raccoon Township, and Wilkesville Township | Jackson County, Gallia County, Vinton County | 1-32 | 0.0 | 0.0 | | +/- | +/- |
| State Parks | | | | | | | | |
| None in Study Area | | | | | | | | |
| State Nature Preserves | | | | | | | | |
| None in Study Area | | | | | | | | |
| Wildlife Areas | | | | | | | | |
| Broken Aro State Wildlife Area | Bloomfield Township, Milton Township | Jackson County | | 1.4 | 2.7 | | +/- | +/- |
| Cooper Hollow State Wildlife Area | Bloomfield Township, Madison Township | Jackson County | | 1.6 | 2.6 | | +/- | +/- |
| Flint Run State Wildlife Area | Milton Township | Jackson County | | 2.6 | 3.8 | | +/- | +/- |
| State Forests | | | | | | | | |
| None in Study Area | | | | | | | | |
| State Fishing/Waterway Access | | | | | | | | |
| None in Study Area | | | | | | | | |
| Other State Lands | | | | | | | | |
| None in Study Area | | | | | | | | |
| Trails | | | | | | | | |
| <i>State and Federal Trails</i> | | | | | | | | |
| No stand-alone state/federal trails were identified. However, state trails occur within (and are evaluated as part of) state lands identified elsewhere in this table. | | | | | | | | |
| Snowmobile/ATV Trails | | | | | | | | |
| None in Study Area | | | | | | | | |
| Bike Trails/Routes | | | | | | | | |
| None in Study Area | | | | | | | | |

| | Location | | | Distance ² | | Distance Zone | Project Visibility (Viewshed Results) | |
|--|---|--|------------------------------|-----------------------------|-----------------------|---|--|--|
| | Town | County | | Miles from Nearest PV Panel | Miles from Substation | | +Visible - Not Visible | +/- Partially Visible |
| Visually Sensitive Resource | | | VP Number¹ | | |  | PV Panel DSM Viewshed (Topography, Structures, and Vegetation) | Substation DSM Viewshed (Topography, Structures, and Vegetation) |
| <i>Other Trails</i> | | | | | | | | |
| None in Study Area | | | | | | | | |
| Local Parks and Recreation Areas | | | | | | | | |
| Franklin Valley Golf Club | Franklin Township | Jackson County | | 3.9 | 4.6 |  | - | - |
| Fair Greens Country Club | Lick Township | Jackson County | | 5.2 | 5.9 |  | - | - |
| Publicly Accessible Conservation Lands/Easements | | | | | | | | |
| Baker Swamp Preserve | Franklin Township | Jackson County | | 4.9 | 5.7 |  | - | - |
| Rivers and Streams with Public Fishing Access | | | | | | | | |
| Symmes Creek | Bloomfield Township, Madison Township | Gallia County, Jackson County | | 0.7 | 1.6 |  | +/- | +/- |
| Little Raccoon Creek | Huntington Township, Bloomfield Township, Milton Township | Gallia County, Jackson County, Vinton County | | 1.8 | 3.5 |  | - | - |
| Salt Lick Creek | Coal Township, Franklin Township, Lick Township, City of Jackson | Jackson County | | 3.7 | 4.4 |  | - | - |
| Named Lakes, Ponds, and Reservoirs | | | | | | | | |
| Oak Hill Reservoir | Franklin Township | Jackson County | | 4.2 | 5.1 |  | - | - |
| High-Use Public Areas | | | | | | | | |
| State, US, and Interstate Highways | | | | | | | | |
| US Hwy 35 | Raccoon Township, Bloomfield Township, Coal Township, Franklin Township, Lick Township, Madison Township, City of Jackson | Gallia County, Jackson County | 9, 31, 32 | 0.1 | 1.0 |  | +/- | +/- |
| State Rte 327 | Bloomfield Township, Milton Township | Jackson County, Vinton County | 17, 18, 20 | 0.3 | 0.9 |  | +/- | +/- |
| State Rte 93 | Coal Township, Franklin Township, Jefferson Township, Lick Township, Madison Township, Milton Township, City of Jackson | Jackson County, Vinton County | | 2.9 | 3.7 |  | +/- | +/- |
| State Rte 124 | Franklin Township, Lick Township, Milton Township, Wilkesville Township, City of Jackson | Jackson County, Vinton County | | 4.6 | 5.5 |  | - | - |

Dixon Run Solar

Bloomfield Township, Jackson County, Ohio

Visual Resource Assessment

Sheet 6 of 7

| Visually Sensitive Resource | Location | | VP Number ¹ | Distance ² | | Distance Zone | Project Visibility (Viewshed Results) | |
|--|--|----------------------------------|------------------------|-----------------------------|-----------------------|--|---------------------------------------|-----|
| | Town | County | | Miles from Nearest PV Panel | Miles from Substation | | + | - |
| | | | | | | | | |
| State Rte 32 Schools | Franklin Township, Lick Township, Milton Township, City of Jackson | Jackson County, Vinton County | | 4.6 | 5.5 | ● Near-Foreground ● Foreground ● Midground * Background | - | - |
| Southview Elementary School | Franklin Township, Lick Township, City of Jackson | Jackson County | | 4.6 | 5.1 | * | - | - |
| Cities, Villages, Unincorporated Areas <i>Cities and Villages</i> | | | | | | | | |
| City of Jackson <i>Unincorporated Areas</i> | Franklin Township, Lick Township, City of Jackson | Jackson County | | 3.9 | 4.4 | ● | - | - |
| Winchester | Bloomfield Township | Jackson County | 22 | 0.2 | 1.1 | ● | +/- | +/- |
| Ridgeland | Bloomfield Township | Jackson County | 15 | 0.3 | 1.0 | ● | +/- | +/- |
| Rocky Hill | Bloomfield Township | Jackson County | | 0.5 | 1.3 | ● | +/- | +/- |
| Pattonsville | Bloomfield Township | Jackson County | | 1.1 | 2.5 | ● | +/- | +/- |
| Vega | Bloomfield Township | Jackson County | 12 | 1.8 | 2.7 | ● | +/- | +/- |
| Keystone | Bloomfield Township | Jackson County | | 1.9 | 3.7 | ● | - | - |
| Orpheus | Bloomfield Township | Jackson County | | 2.8 | 3.8 | ● | - | - |
| Rempel | Madison Township | Jackson County | | 3.0 | 4.0 | ● | - | - |
| Buckeye | Milton Township | Jackson County | | 3.4 | 4.9 | ● | - | - |
| Clay | Franklin Township, Madison Township | Jackson County | | 3.8 | 4.8 | ● | - | - |
| Keystone | Franklin Township | Jackson County | | 3.9 | 4.7 | ● | - | - |
| Pyro | Madison Township | Jackson County | | 3.9 | 4.9 | ● | - | - |
| Camba | Franklin Township | Jackson County | | 4.1 | 5.0 | * | - | - |
| Middleton | Milton Township | Jackson County | | 4.5 | 5.8 | * | - | - |
| Banner | Franklin Township | Jackson County | | 4.6 | 5.5 | * | - | - |
| Roads | Milton Township | Jackson County | | 4.7 | 5.7 | * | - | - |

¹If no viewpoint (VP) number is indicated, no photo was obtained during fieldwork.
²For large areas and linear sites, approximate distance to the Project component was measured from the respective area's closest point.

This foregoing document was electronically filed with the Public Utilities

Commission of Ohio Docketing Information System on

9/29/2021 1:03:25 PM

in

Case No(s). 21-0768-EL-BGN

Summary: Application Exhibit P - Visual Resource Assessment and Mitigation Plan Part 2 of 2
electronically filed by Teresa Orahod on behalf of Herrnstein, Kara