

Exhibit K

Habitat Assessment

Dean Sather

From: Shelby Kilibarda
Sent: Friday, February 26, 2021 8:46 AM
To: environmentalreviewrequest@dnr.state.oh.us
Subject: Environmental Review Request - Grover Hill Wind Project
Attachments: 20-082; Westwood PS- Grover Hill Wind Project Comments.pdf; GH_Habitat_Ex2_ProjectSiteMap_191219.pdf; GH_Habitat_Ex3_Topography&DrainageFeatures_191218.pdf; GH_Habitat_Ex4_WetlandsMap_191219.pdf; GH_Habitat_Ex5_WindsFarms_191219.pdf; GH_Habitat_Ex6_LandCoverMap_191219.pdf; GH_Habitat_Ex1_ProjectVicinityMap_191220.pdf; GH_ProjectBoundary_200915.zip

To whom it may concern,

Westwood Professional Services is requesting an updated Environmental Review for the Grover Hill Wind Project in Paulding County, Ohio.

Starwood Energy Group Global, LLC (Starwood) proposes to construct and operate the Grover Hill Wind Project (Project) in Paulding County, Ohio (Exhibit 1). The Project Area consists of approximately 9,685 acres (15 square miles) located in southern Paulding County, Ohio, approximately 3 miles east of the town of HaviLand and 6 miles to the southeast of the town of Paulding. The town of Grover Hill is located within the central portion of the Project Area (Exhibit 2). The Project will be configured as a wind energy conversion facility with a potential total nameplate capacity of 150 megawatts (MW). Starwood continues to assess its turbine options, and is currently evaluating wind turbine generators (WTGs) with rated power outputs between 3.0 to 6.0 MW each, which could result in the installation of 25 wind turbines, depending upon the model(s) selected and the final output of the Project. Additional facilities may include transmission line, access roads, electrical collection lines, an operations and maintenance facility, substation, and laydown area.

Topography is relatively flat; no buttes, rolling hills, or draws exist (Exhibit 3). Portions of eight named waterways are located within the Project Area including Town Creek, Maddox Creek, Middle Creek, Hoaglin Creek, West Branch Creek, Prairie Creek, Dog Run, and Hog Run (Exhibit 4). Surface ownership in the Project Area is exclusively private. Several operating, utility-scale wind farms are located in the Project Area vicinity including the Northwest Ohio Wind Farm (NOW) (100MW), located directly west of the Project Area, Timber Road Wind Farm (100 MW), located west of NOW, and Blue Creek Wind Farm (304 MW), located to the south (Exhibit 5).

A total of seven principal land cover types are recognized and mapped within the Project Area. These include cultivated crops, developed areas, forest, herbaceous, woody wetlands, open water, and emergent herbaceous wetlands (Exhibit 6).

Please let me know if you have any questions.

Thank you,

Shelby Kilibarda

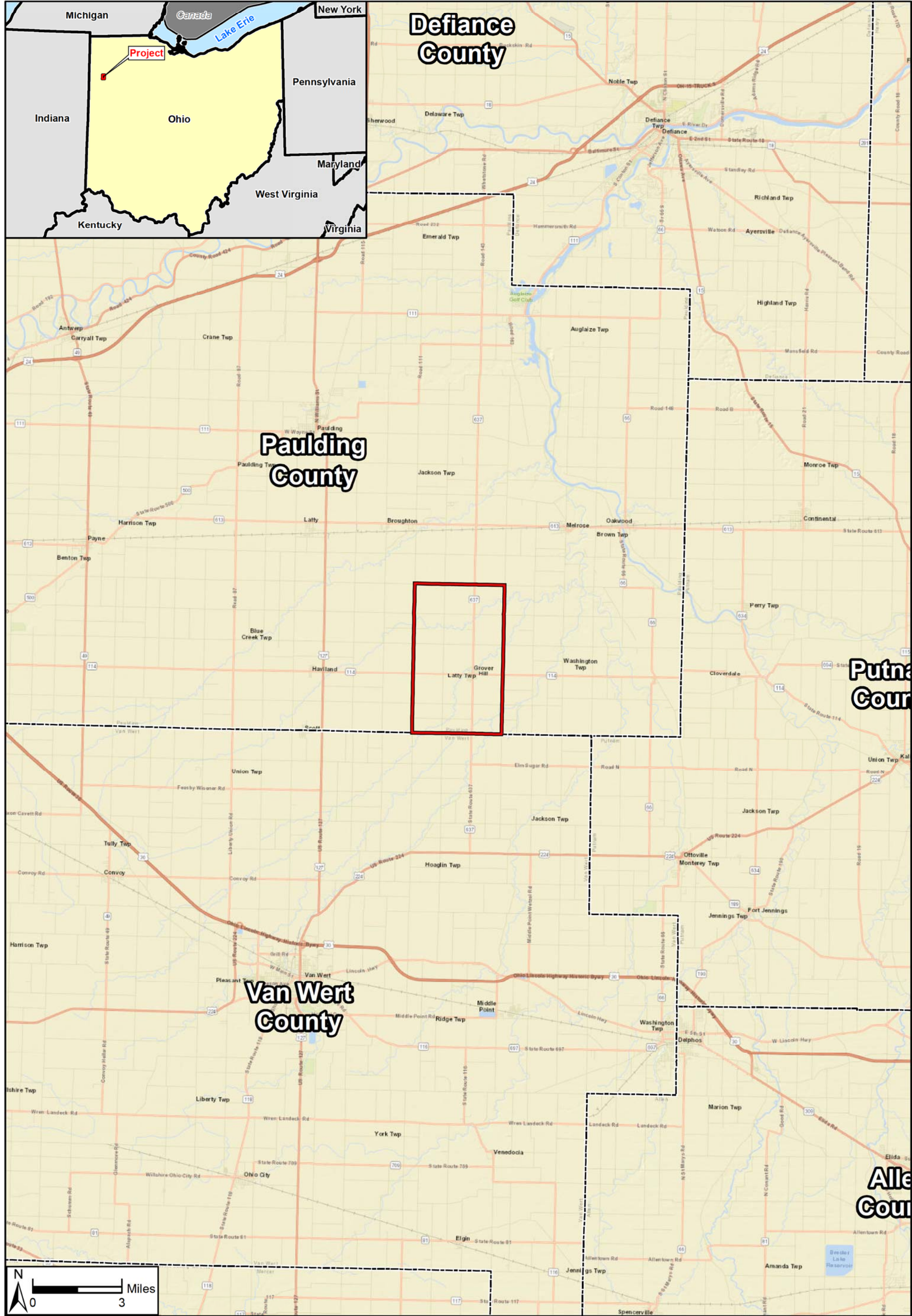
Environmental Scientist

shelby.kilibarda@westwoodps.com

direct (952) 906-7440
main (952) 937-5150
cell (651) 206-6123




Westwood

12701 Whitewater Drive, Suite 300
Minnetonka, MN 55343



Data Source(s): Westwood (2019); ESRI WMS
World Streets Basemap (Accessed 2018).

Legend

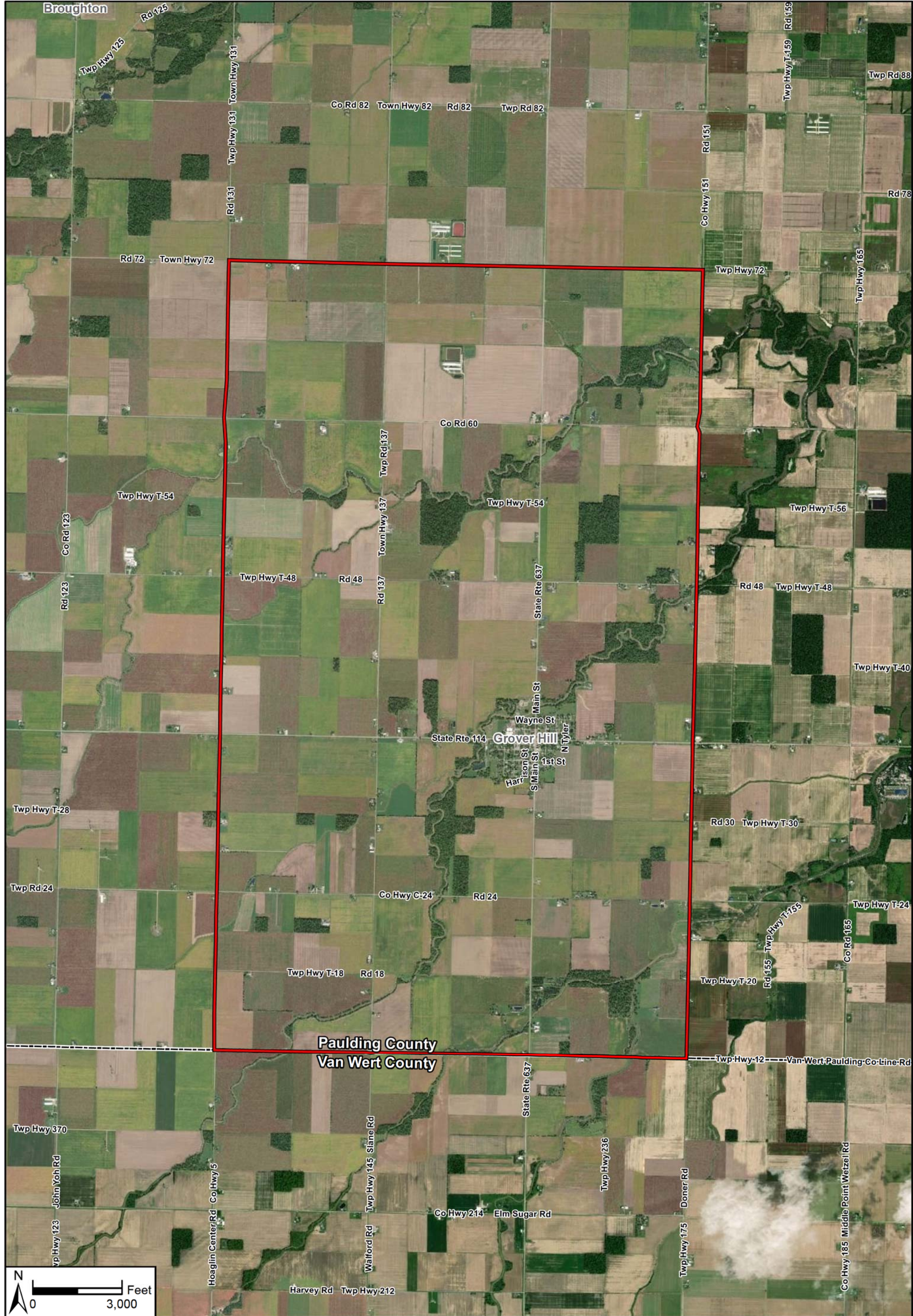
-  Project Boundary
-  County Boundary
-  State Boundary

Westwood

Toll Free (888) 937-5150 westwoodps.com
Westwood Professional Services, Inc.

Grover Hill Wind
Paulding County, Ohio

Project Vicinity Map



Data Source(s): Westwood (2019); ESRI WMS
World Imagery Basemap (Accessed 2018);
Census Bureau (2017).

Legend

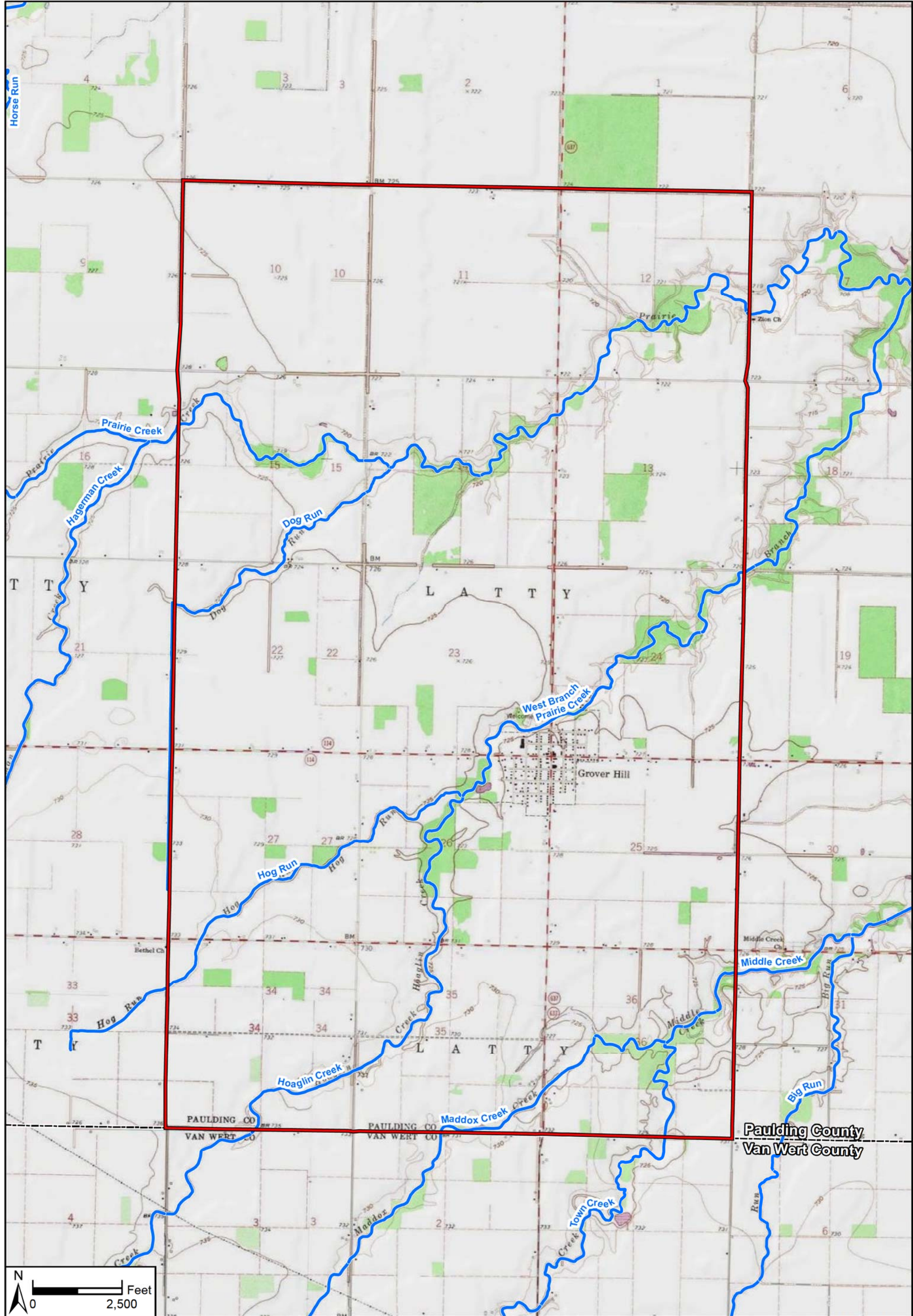
-  Project Boundary
-  County Boundary

Westwood

Toll Free (888) 937-5150 westwoodps.com
Westwood Professional Services, Inc.

Grover Hill Wind
Paulding County, Ohio

Project Site Map



Data Source(s): Westwood (2019); ESRI WMS
USGS Topo Basemap (Accessed 2018);
Census Bureau (2017).

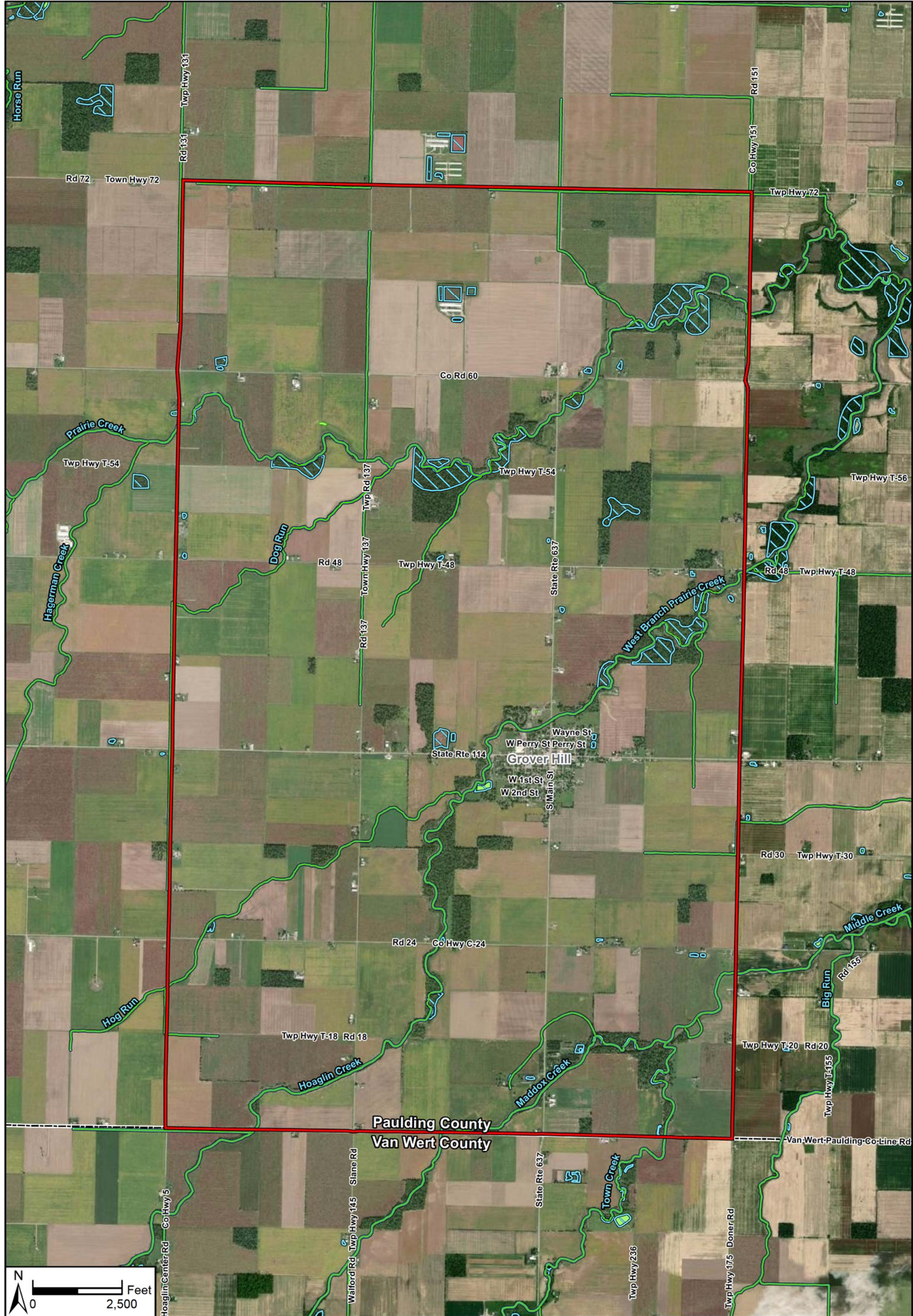
Legend

- Project Boundary
- County Boundary
- Major Drainage Feature

Westwood



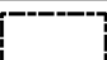
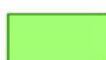
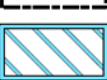
Toll Free (888) 937-5150 westwoodps.com
Westwood Professional Services, Inc.

Grover Hill Wind
Paulding County, Ohio
Topography & Major
Drainage Features



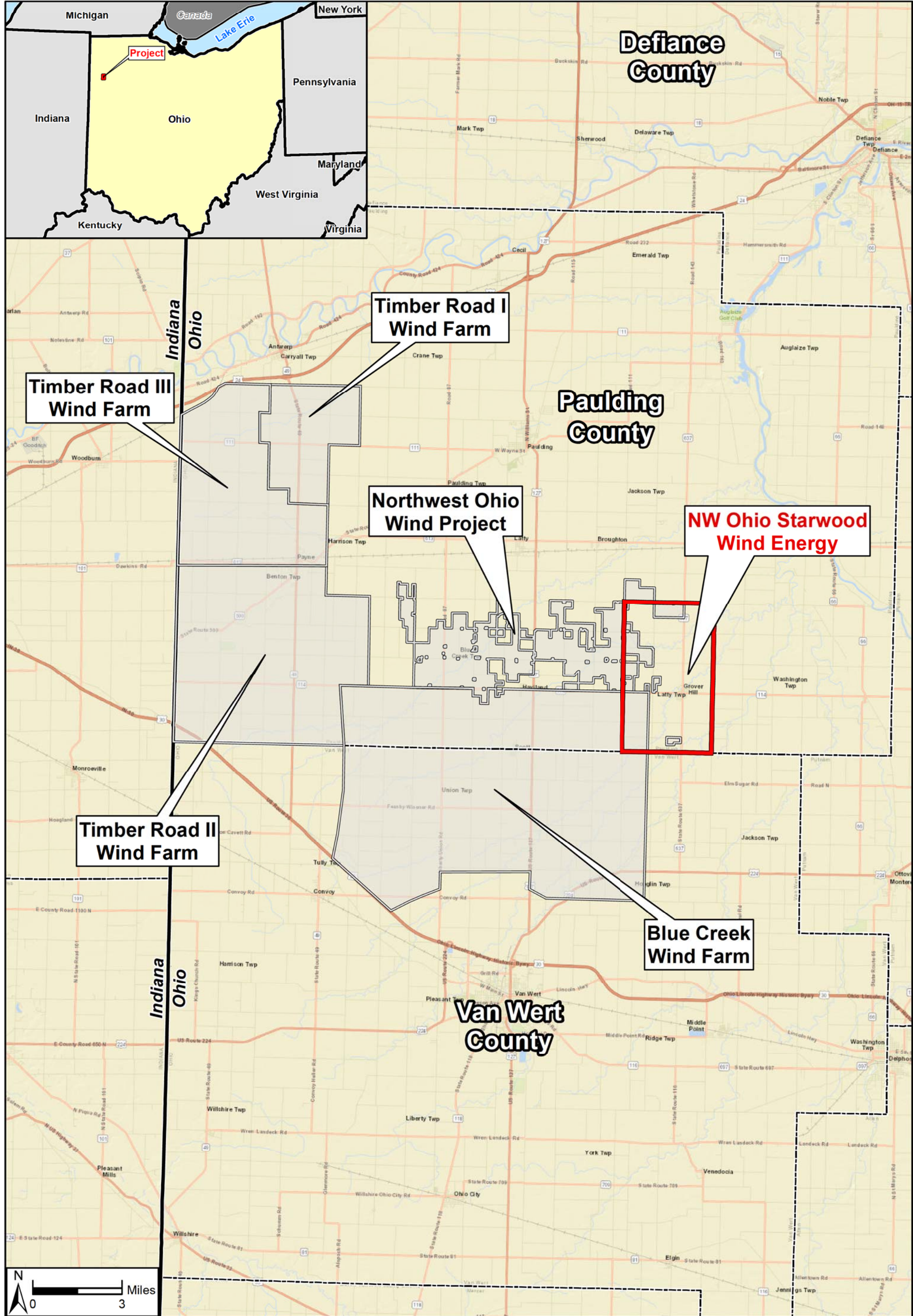
Data Source(s): Westwood (2019); ESRI WMS World Imagery Basemap (Accessed 2018); Census Bureau (2017); U.S. Fish and Wildlife Service (2018); Ducks Unlimited (2018).

Legend

- | | |
|--|---|
|  Project Boundary |  NHD Flowline |
|  County Boundary |  NHD Waterbody |
|  NWI Wetland | |

Grover Hill Wind
Paulding County, Ohio

Surface Waters & Wetlands



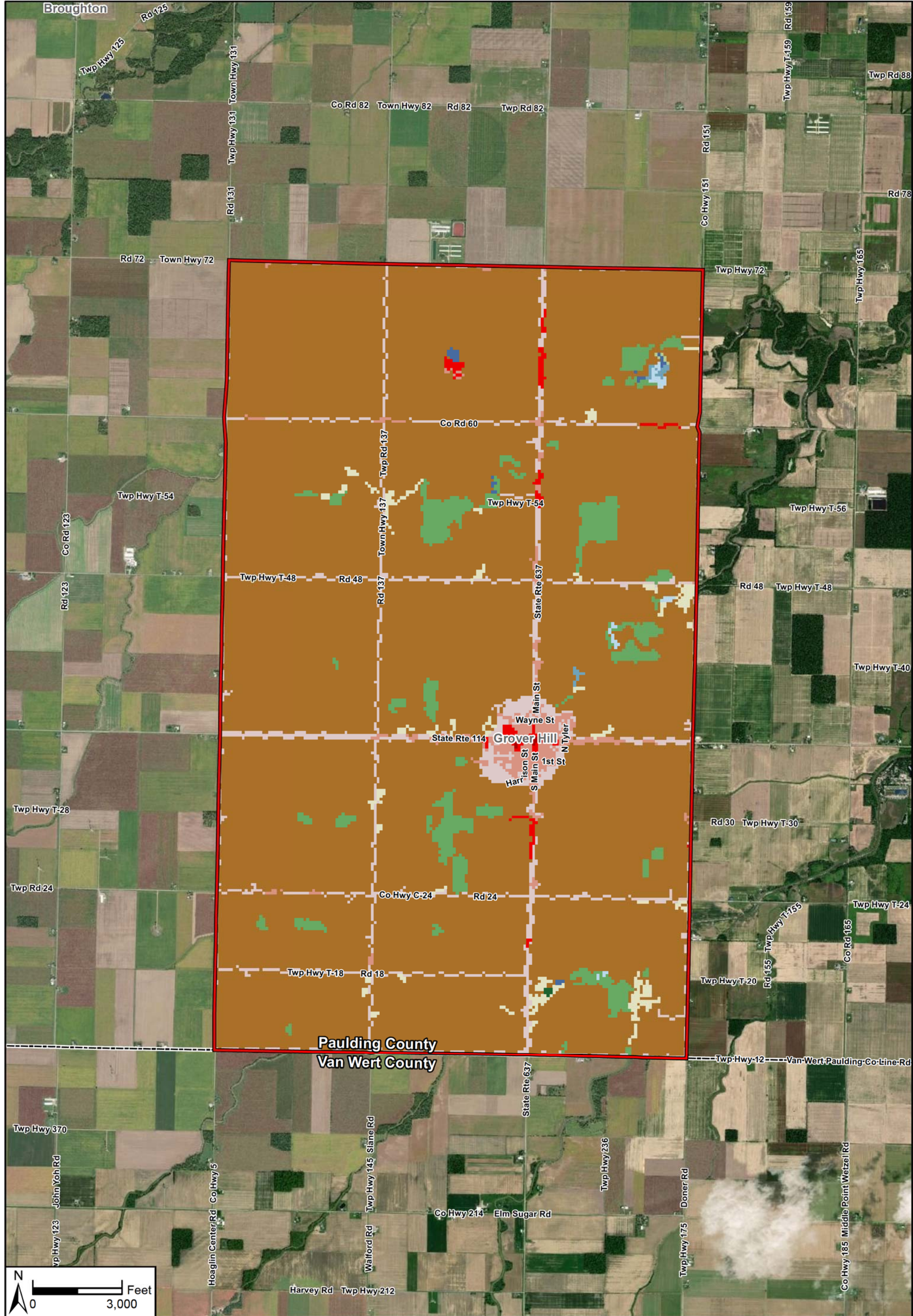
Data Source(s): Westwood (2019); ESRI WMS World Streets Basemap (Accessed 2018).

Legend

- Project Boundary
- County Boundary
- Nearby Operational Wind Farm Boundary
- State Boundary

Grover Hill Wind
Paulding County, Ohio

Operational Wind Farms



Data Source(s): Westwood (2019); ESRI WMS World Imagery Basemap (Accessed 2019); Census Bureau (2017); U.S. Geological Survey (2011).

Westwood
Toll Free (888) 937-5150 westwoodps.com
Westwood Professional Services, Inc.

Legend			
	Project Boundary		Developed, Medium Intensity
	County Boundary		Developed, High Intensity
	Cultivated Crops		Developed, Open Space
	Deciduous Forest		Emergent Herbaceous Wetlands
	Developed, Low Intensity		Evergreen Forest
			Herbaceous
			Mixed Forest
			Open Water
			Woody Wetlands

Grover Hill Wind
Paulding County, Ohio

Land Cover Types

EXHIBIT 6

This foregoing document was electronically filed with the Public Utilities

Commission of Ohio Docketing Information System on

5/3/2021 11:42:07 AM

in

Case No(s). 20-0417-EL-BGN

Summary: Application - 14 of 40 (Exhibit K – Habitat Assessment) electronically filed by Christine M.T. Pirik on behalf of Grover Hill Wind, LLC