



Union Ridge Solar

Exhibit S

Visual Resource Assessment and Mitigation Plan

Part 3 of 3

Case No. 20-1757-EL-BGN

Covington Lane

Viewpoint Information

Viewpoint ID: 14
County: Licking
Township: Harrison
Location: Covington Lane
Latitude, Longitude: 39.98068° N, 82.63200° W
Direction of View: North
Distance to Project: 295 ft (0.06 mi.)
Distance Zone: Near-Foreground

Visual Resources:

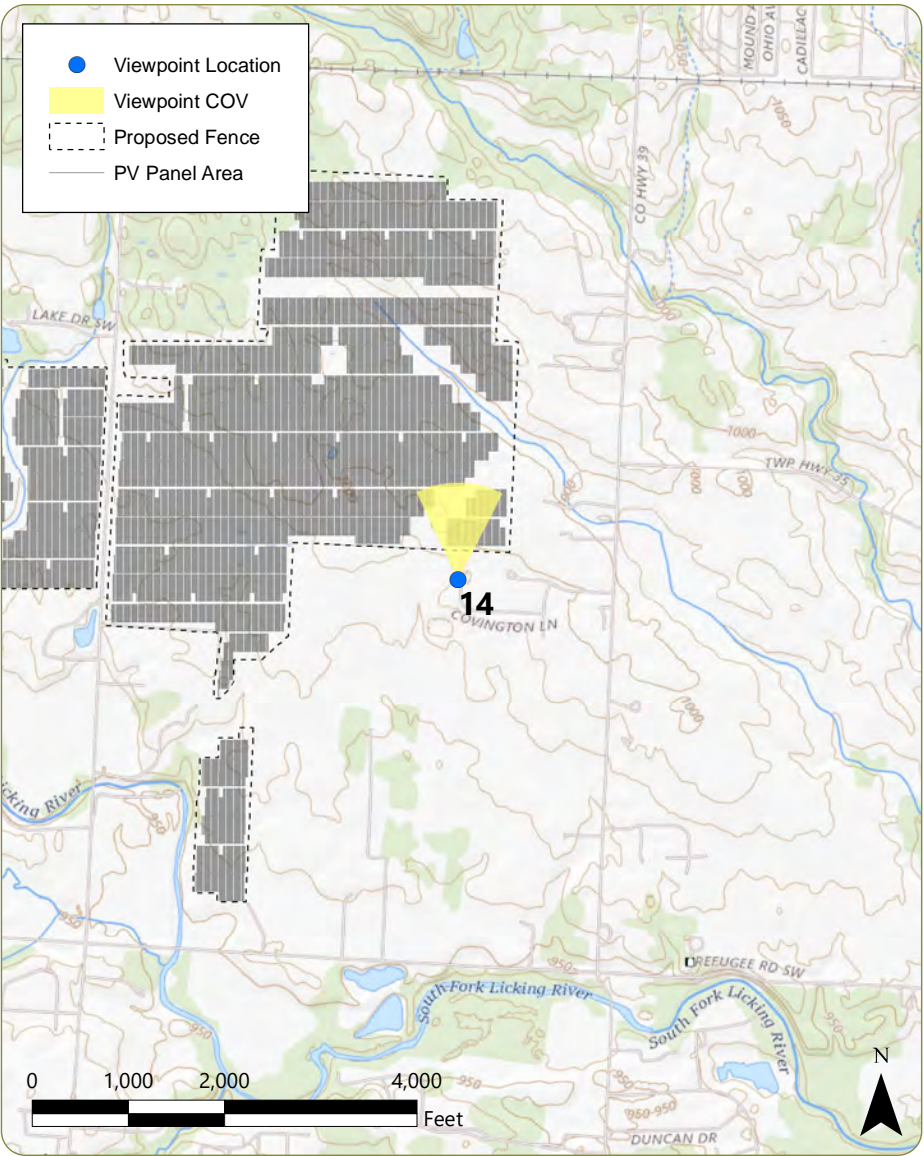
Landscape Type: Developed
User Group: Resident
VSR: None

Photograph Information

Date Taken: January 21, 2021
Time: 11:32 AM
Camera: Nikon D7200
Resolution: 24 Megapixels
Lens Focal Length: 24 mm
Camera Elevation: 996 ft
Field of View: 53 degrees

Project Information:

Racking Type: Single Axis Tracker
Max Panel Height: 14 ft AGL
Total Buildable Area: 523 acres



Context Photo: View to the Northwest



Simulation Photo: View to the North



Context Photo: View to the North-Northeast



Context Photo: View to the Northeast

Union Ridge Solar, LLC
Harrison Township, Licking County, Ohio

Existing Conditions



Visual Simulation



Visual Simulation - 5-7 Year Mitigation



County Road 42 (Watkins Road)

Viewpoint Information

Viewpoint ID: 19
County: Licking
Township: Harrison
Location: County Road 42 (Watkins Road)
Latitude, Longitude: 39.98531° N, 82.64509° W
Direction of View: Northeast
Distance to Project: 30 ft (0.01 mi.)
Distance Zone: Near-Foreground

Visual Resources:

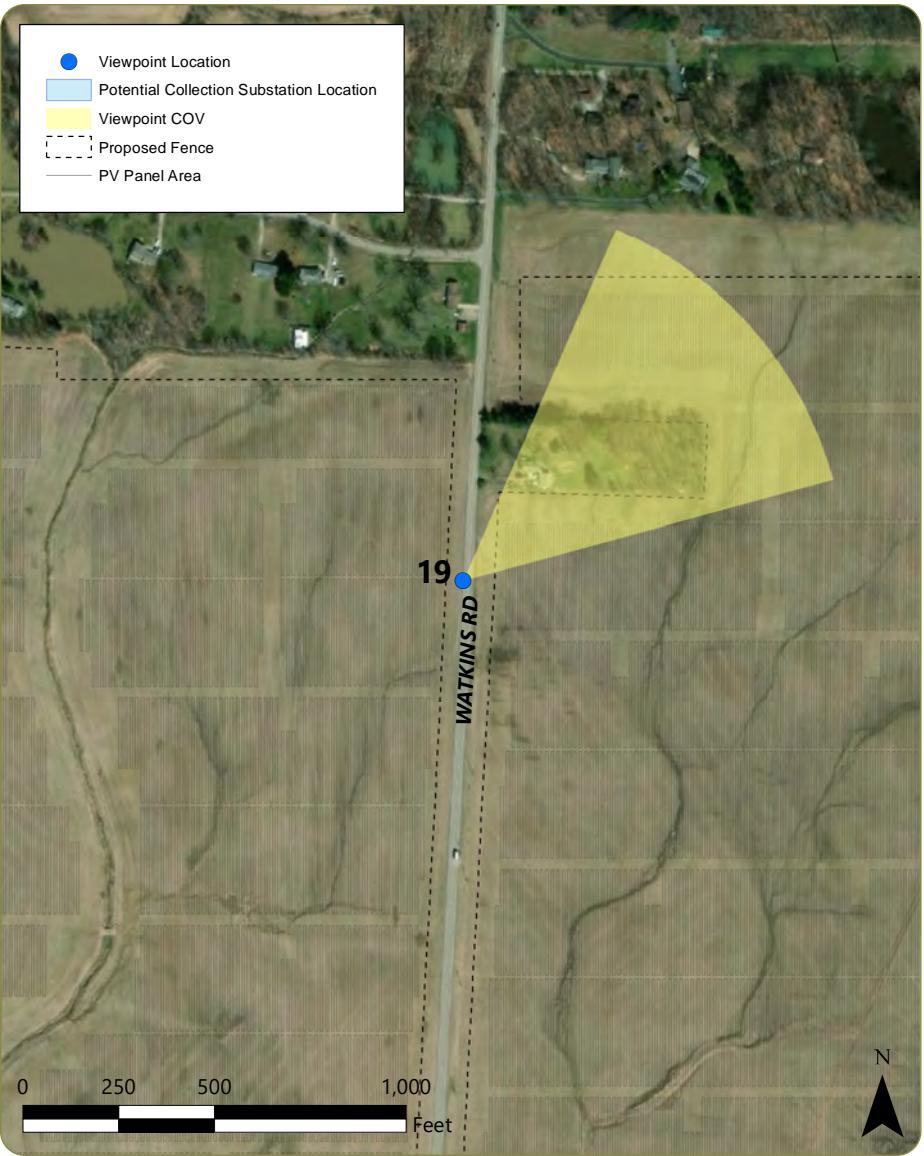
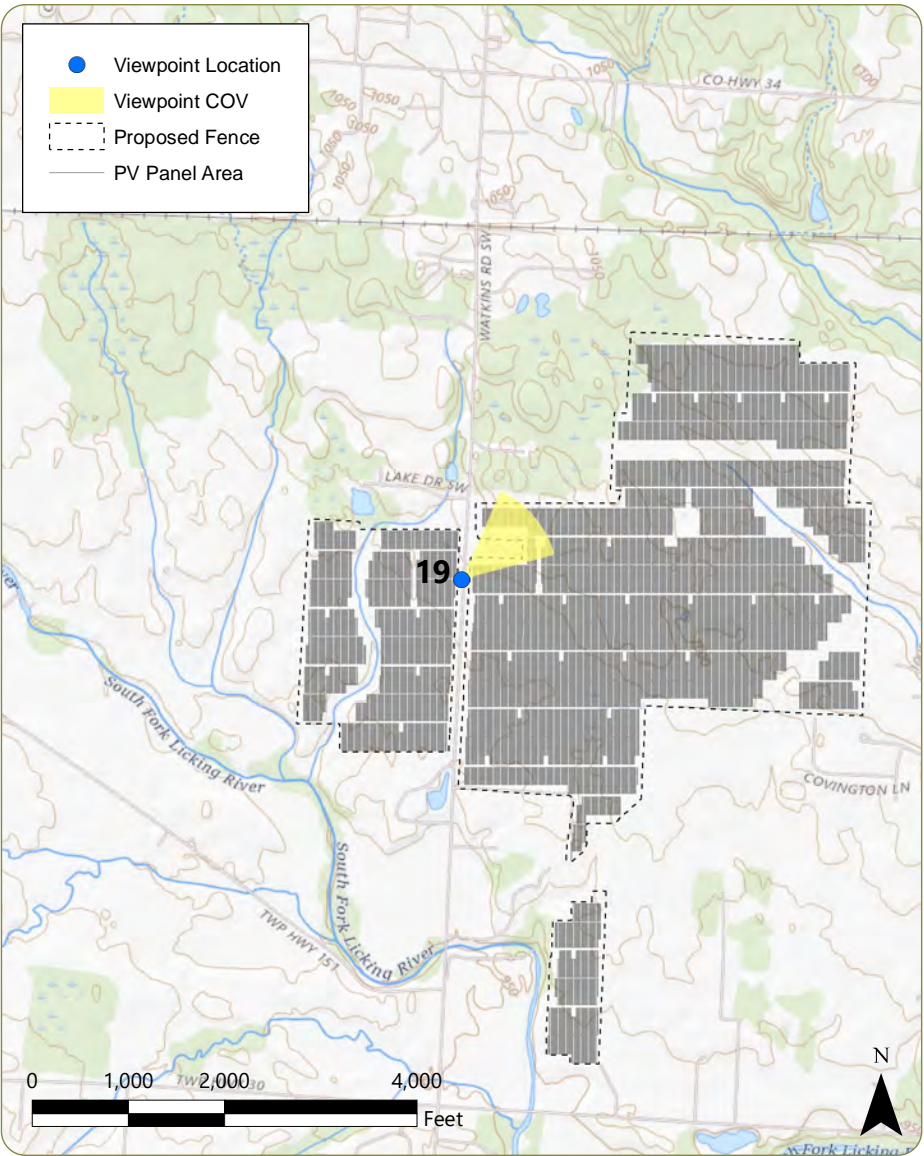
Landscape Type: Pasture and Cropland
User Group: Resident
VSR: None

Photograph Information

Date Taken: January 21, 2021
Time: 12:11 PM
Camera: Nikon D7200
Resolution: 24 Megapixels
Lens Focal Length: 24 mm
Camera Elevation: 993 ft
Field of View: 51 degrees

Project Information:

Racking Type: Single Axis Tracker
Max Panel Height: 14 ft AGL
Total Buildable Area: 523 acres



Context Photo: View to the North-Northeast



Simulation Photo: View to the Northeast



Context Photo: View to the East-Northeast



Context Photo: View to the Southeast

Union Ridge Solar, LLC
Harrison Township, Licking County, Ohio

Existing Conditions



Visual Simulation



Visual Simulation - 5-7 Year Mitigation



Appendix D

Location of Visually Sensitive Resources

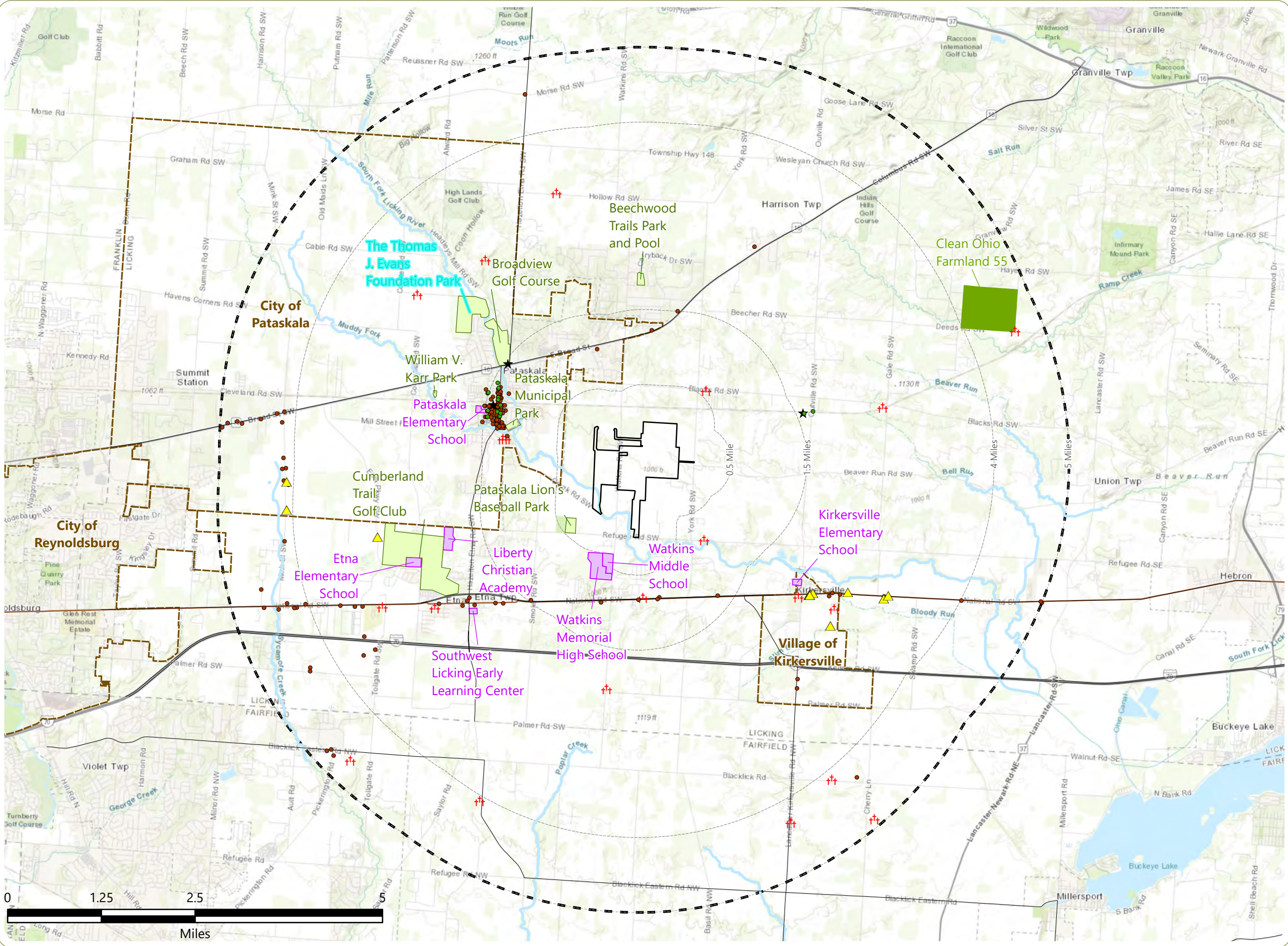
Union Ridge Solar, LLC

Harrison Township, Licking County, Ohio

Appendix D: Location of Visually Sensitive Resources

- Site Listed on NRHP
- ▲ Site Eligible for Listing on NRHP
- ★ Ohio Historic Marker
- OHI Historic Structure
- †† OGS Cemetery
- State, Us, and Interstate Highways
- State Heritage Area
- Scenic Byway
- River and Stream with Public Fishing Rights Access
- Bike Trail
- ▭ Project Area
- Publicly Accessible Conservation Land
- Local Park and Recreation Area
- School
- ▭ City and Village
- Distance Zone
- ▭ 5-Mile Study Area

Notes: 1. Basemap: ESRI ArcGIS Online "World Imagery" map service. 2. This map was generated in ArcMap on February 18, 2021. 3. This is a color graphic. Reproduction in grayscale may misrepresent the data.



Appendix E

Visually Sensitive Resources Visibility Analysis

Visually Sensitive Resource	Location		VP Number ¹	Distance ²	Distance Zone	Project Visibility (Viewshed Results)	
						+Visible	- Not Visible
	Town	County		Miles from PV Panel	<div><div></div>Near-Foreground</div> <div><div></div>Foreground</div> <div><div></div>Midground</div> <div><div></div>Background</div>	PV Panel DSM Viewshed (Topography, Structures, and Vegetation)	Collection Substation DSM Viewshed (Topography, Structures, and Vegetation)
Properties of Historic Significance							
National/State Historic Landmarks							
None in Study Area							
National/State Historic Sites							
None in Study Area							
Sites Listed on National or State Registers of Historic Places (NRHP/SRHP)							
Pataskala United Methodist Church	City of Pataskala	Licking		1.4	<div><div></div></div>	-	-
Pataskala Town Hall	City of Pataskala	Licking		1.4	<div><div></div></div>	-	-
Pataskala Banking Company	City of Pataskala	Licking		1.4	<div><div></div></div>	-	-
Pataskala Presbyterian Church	City of Pataskala	Licking		1.4	<div><div></div></div>	-	-
Elliot House	City of Pataskala	Licking		1.5	<div><div></div></div>	-	-
Kauber, Warren F., Funeral Home	City of Pataskala	Licking		1.5	<div><div></div></div>	-	-
Casterton House	City of Pataskala	Licking		1.5	<div><div></div></div>	-	-
Pataskala Jail	City of Pataskala	Licking		1.5	<div><div></div></div>	-	-
Pataskala Elementary School	City of Pataskala	Licking		1.5	<div><div></div></div>	-	-
Mead House	City of Pataskala	Licking		1.6	<div><div></div></div>	-	-
Bethel Baptist Church	City of Pataskala	Licking		1.6	<div><div></div></div>	-	-
Outville Depot	Harrison	Licking		1.7	<div><div></div></div>	-	-
Outville Hay and Grain Company Building	Harrison	Licking		1.8	<div><div></div></div>	-	-
Sites Eligible for Listing on NRHP or SRHP							
Outville Road Development H/A Report - 175 E Main St	Harrison	Licking		2.4	<div><div></div></div>	-	-
Outville Road Development H/A Report - 177 E Main St	Harrison	Licking		2.4	<div><div></div></div>	-	-
Outville Road Development H/A Report - 185 E Main St	Harrison	Licking		2.4	<div><div></div></div>	-	-
Outville Road Development H/A Report - N side US 40	Harrison	Licking		2.4	<div><div></div></div>	-	-
Outville Road Development H/A Report - 4874 National Rd	Harrison	Licking		2.7	<div><div></div></div>	-	-
Outville Road Commercial Development, Phase I	Harrison	Licking		2.8	<div><div></div></div>	-	-
Etna Parkway JRS Project	Etna	Licking		3.0	<div><div></div></div>	-	-
Outville Road Development H/A Report - 4413 National Rd	Union	Licking		3.2	<div><div></div></div>	-	-
Outville Road Development H/A Report - 1 mi E of Gale Rd	Union	Licking		3.2	<div><div></div></div>	-	-
Etna Parkway JRS Project - 7621 Mink St	City of Pataskala	Licking		4.1	<div><div></div></div>	-	-
Etna Parkway JRS Project - 8065 Mink St	City of Pataskala	Licking		4.1	<div><div></div></div>	-	-

Visually Sensitive Resource	Location		VP Number ¹	Distance ²	Distance Zone	Project Visibility (Viewshed Results)	
						+Visible - Not Visible +/- Partially Visible	
				Town	County	Miles from PV Panel	<div><div></div> Near-Foreground</div> <div><div></div> Foreground</div> <div><div></div> Midground</div> <div><div></div> Background</div>
OHI Historic Structures							
US 40 Concrete Box Culvert - US 40/E of Watkins Rd	Etna	Licking		0.9	<div></div>	-	-
National Road Mile Marker 238 - N side US 40/W of York Rd	Etna	Licking		0.9	<div></div>	-	-
US 40 Concrete Box Culvert - US 40/3 mi W of York Rd	Etna	Licking		1.0	<div></div>	-	-
Shamrock - 8409 National Rd SW (US 40)	Etna	Licking		1.1	<div></div>	-	-
Foor Farm - SR 16	Harrison	Licking		1.2	<div></div>	-	+/-
Pataskala Cemetery - Creek Rd	Harrison	Licking		1.2	<div></div>	-	-
Kerts Farm - N side SR 16, E of Watkins Rd SW	Harrison	Licking		1.2	<div></div>	-	-
Ace Lab - 63 E Mill St	City of Pataskala	Licking		1.3	<div></div>	-	-
Swick Dwight & Mary Residence - 49 E Mill St	City of Pataskala	Licking		1.3	<div></div>	-	-
Wright Furniture - 52 E Mill St	City of Pataskala	Licking		1.3	<div></div>	-	-
Frankenburg Vinnie V Residence - 44 E Mill St	City of Pataskala	Licking		1.3	<div></div>	-	-
Smith Mark C Residence - 504 Jefferson St	City of Pataskala	Licking		1.3	<div></div>	-	-
Galloway Residence - 21 E Mill St	City of Pataskala	Licking		1.3	<div></div>	-	-
Wilson Dean Residence - 64 Atkinson St	City of Pataskala	Licking		1.3	<div></div>	-	-
Fraker Residence - 6 E Mill/Old Creek Rd	City of Pataskala	Licking		1.3	<div></div>	-	-
Pataskala Machine Shop - 468 Jefferson St	City of Pataskala	Licking		1.3	<div></div>	-	-
Mock Lawrence MS & Diana - 516 S Main St	City of Pataskala	Licking		1.4	<div></div>	-	-
Elder-Rental Property - 532 S Main St	City of Pataskala	Licking		1.4	<div></div>	-	-
Atkinson House - 1 Mill St	City of Pataskala	Licking		1.4	<div></div>	-	-
National Road Remnant - N side US 40/W of SR 158	Etna	Licking		1.4	<div></div>	-	-
Moss Residence - 478 S Main St	City of Pataskala	Licking		1.4	<div></div>	-	-
Gillogly Residence - 498 S Main St	City of Pataskala	Licking		1.4	<div></div>	-	-
Condit Residence - 52 E Depot St	City of Pataskala	Licking		1.4	<div></div>	-	-
Morris Freda Nichols - 406 Jefferson St	City of Pataskala	Licking		1.4	<div></div>	-	-
Fraker Residence - 488 S Main St	City of Pataskala	Licking		1.4	<div></div>	-	-
Fravel Elena Residence - 524 S Main St	City of Pataskala	Licking		1.4	<div></div>	-	-
Ness David & Ruth Residence - 537 S Main St	City of Pataskala	Licking		1.4	<div></div>	-	-
Pataskala Town Hall - 430 Main St	City of Pataskala	Licking		1.4	<div></div>	-	-
Pataskala United Methodist Church - 458 S Main St	City of Pataskala	Licking		1.4	<div></div>	-	-
Montis John Michael House - 521 S Main St	City of Pataskala	Licking		1.4	<div></div>	-	-

Visually Sensitive Resource	Location		VP Number ¹	Distance ²	Distance Zone	Project Visibility (Viewshed Results)	
						➕Visible	- Not Visible
				Town	County	Miles from PV Panel	<div><div></div>Near-Foreground</div> <div><div></div>Foreground</div> <div><div></div>Midground</div> <div><div></div>Background</div>
Robinson Howard Office - 36 Depot St	City of Pataskala	Licking		1.4	<div><div></div></div>	-	-
Chapman House - 503 S Main St	City of Pataskala	Licking		1.4	<div><div></div></div>	-	-
Fraker Richard D Residence - 497 S Main St	City of Pataskala	Licking		1.4	<div><div></div></div>	-	-
Julione Residence - 511 S Main St	City of Pataskala	Licking		1.4	<div><div></div></div>	-	-
Welch Residence - 489 S Main St	City of Pataskala	Licking		1.4	<div><div></div></div>	-	-
Tooliver Elizabeth A - 25 Atkinson St	City of Pataskala	Licking		1.4	<div><div></div></div>	-	-
Tipton Ronald & Alpha Residence - 467 S Main St	City of Pataskala	Licking		1.4	<div><div></div></div>	-	-
Folk Stanley & Ruth House - 242 S Township Rd	Harrison	Licking		1.4	<div><div></div></div>	-	-
Welch Residence - 451 S Main St	City of Pataskala	Licking		1.4	<div><div></div></div>	-	-
Chet's Auto Repair - E Depot St	City of Pataskala	Licking		1.4	<div><div></div></div>	-	-
Sherman Property - 481 S Main St	City of Pataskala	Licking		1.4	<div><div></div></div>	-	-
Fravel Residence - 461 S Main St	City of Pataskala	Licking		1.4	<div><div></div></div>	-	-
Bailey Furniture House - 378 S Main St	City of Pataskala	Licking		1.4	<div><div></div></div>	-	-
Gill Residence - 437 S Main St	City of Pataskala	Licking		1.4	<div><div></div></div>	-	-
Pataskala Banking Company - 354 S Main St	City of Pataskala	Licking		1.4	<div><div></div></div>	-	-
Pataskala Standard Office Bldg - 350 S Main St	City of Pataskala	Licking		1.4	<div><div></div></div>	-	-
Pataskala Presbyterian Church - SWC Atkinson & Main	City of Pataskala	Licking		1.4	<div><div></div></div>	-	-
Flower's Nancy - 399 S Main St	City of Pataskala	Licking		1.4	<div><div></div></div>	-	-
Headly Residence - 54 W Mill St	City of Pataskala	Licking		1.4	<div><div></div></div>	-	-
Beach Resident - 377 S Main St	City of Pataskala	Licking		1.4	<div><div></div></div>	-	-
Merkle Property - 387 S Main St	City of Pataskala	Licking		1.4	<div><div></div></div>	-	-
Cox James D & Linda - 391 S Main St	City of Pataskala	Licking		1.4	<div><div></div></div>	-	-
Kauber Barn - 288 S Main St	City of Pataskala	Licking		1.4	<div><div></div></div>	-	-
Baird Property - 64 Lincoln St	City of Pataskala	Licking		1.4	<div><div></div></div>	-	-
Suburban Carpet Sales - 312 S Main St	City of Pataskala	Licking		1.4	<div><div></div></div>	-	-
Pataskala Pharmacy & Pataskala - 355 & SO Main St	City of Pataskala	Licking		1.4	<div><div></div></div>	-	-
Ellis Residence - 40 Broadway	City of Pataskala	Licking		1.4	<div><div></div></div>	-	-
Sherman Residence - 46 Lincoln St	City of Pataskala	Licking		1.4	<div><div></div></div>	-	-

Visually Sensitive Resource	Location		VP Number ¹	Distance ²	Distance Zone	Project Visibility (Viewshed Results)	
	Town	County				➤Visible	- Not Visible
				Miles from PV Panel	<div><div></div>Near-Foreground</div> <div><div></div>Foreground</div> <div><div></div>Midground</div> <div><div></div>Background</div>	PV Panel DSM Viewshed (Topography, Structures, and Vegetation)	Collection Substation DSM Viewshed (Topography, Structures, and Vegetation)
Gene-Jo-Gift Shop - 375 S Main St	City of Pataskala	Licking		1.4	<div></div>	-	-
Warren F Kauber Funeral Home - 289 S Main St	City of Pataskala	Licking		1.4	<div></div>	-	-
Pingel Howard Bldg - 345 S Main St	City of Pataskala	Licking		1.5	<div></div>	-	-
Village Inn Restaurants - 17 W Depot St	City of Pataskala	Licking		1.5	<div></div>	-	-
Alward Jim & Kathy House - 306 S Main St	City of Pataskala	Licking		1.5	<div></div>	-	-
Williams Jr Claude A Bldg - 341-349 S Main St	City of Pataskala	Licking		1.5	<div></div>	-	-
Kauber Warren & Chris Residence - 288 S Main St	City of Pataskala	Licking		1.5	<div></div>	-	-
McNan's Dress Shop - 14-18 West	City of Pataskala	Licking		1.5	<div></div>	-	-
Jones Dorothy Residence - 401 Wood St	City of Pataskala	Licking		1.5	<div></div>	-	-
Vacant - 25 W Depot St	City of Pataskala	Licking		1.5	<div></div>	-	-
Ellis Property - 56 Broadway	City of Pataskala	Licking		1.5	<div></div>	-	-
Elliot House - 301 S Main St	City of Pataskala	Licking		1.5	<div></div>	-	-
Morbitzer John R & Tracey - 63 Broadway	City of Pataskala	Licking		1.5	<div></div>	-	-
Haines John & Barbara Residence - 369 S Wood St	City of Pataskala	Licking		1.5	<div></div>	-	-
Hite Ralph Residence - 258 S Main St	City of Pataskala	Licking		1.5	<div></div>	-	-
Warren F Kauber Funeral Home - 289 S Main St	City of Pataskala	Licking		1.5	<div></div>	-	-
Widner Residence - 394 S High St	City of Pataskala	Licking		1.5	<div></div>	-	-
McGowan John Residence - 248 S Main St	City of Pataskala	Licking		1.5	<div></div>	-	-
Kauber Warren & Chris Residence - 295 S Main St	City of Pataskala	Licking		1.5	<div></div>	-	-
Wright Residence - 228 S Main St	City of Pataskala	Licking		1.5	<div></div>	-	-
Hill Residence - 400 S High St	City of Pataskala	Licking		1.5	<div></div>	-	-
Bill & Agnus Bailey House - Main St	City of Pataskala	Licking		1.5	<div></div>	-	-
Fairall Property - 50 Granville St	City of Pataskala	Licking		1.5	<div></div>	-	-
Locke Property - 76 Broadway	City of Pataskala	Licking		1.5	<div></div>	-	-
Columbia Road - Columbus Rd (SR 16)	Harrison	Licking		1.5	<div></div>	-	-
Hecker Property - 374 S High St	City of Pataskala	Licking		1.5	<div></div>	-	-
Wind Flower House - 245 S Main St	City of Pataskala	Licking		1.5	<div></div>	-	-
Hecker Property - 371 S High St	City of Pataskala	Licking		1.5	<div></div>	-	-

Visually Sensitive Resource	Location		VP Number ¹	Distance ²	Distance Zone	Project Visibility (Viewshed Results)	
	Town	County				+Visible - Not Visible +/- Partially Visible	
				Miles from PV Panel	<div><div></div> Near-Foreground</div> <div><div></div> Foreground</div> <div><div></div> Midground</div> <div><div></div> Background</div>	PV Panel DSM Viewshed (Topography, Structures, and Vegetation)	Collection Substation DSM Viewshed (Topography, Structures, and Vegetation)
Mauger Errol C & Della - 6 Town St	City of Pataskala	Licking		1.5	<div></div>	-	-
Hecker Ralph & Eva Residence - 361 S High St	City of Pataskala	Licking		1.5	<div></div>	-	-
Van Dorn Bernice E Residence - 192 S Main St	City of Pataskala	Licking		1.5	<div></div>	-	-
Casterton Residence - 105 Broadway	City of Pataskala	Licking		1.5	<div></div>	-	-
Pataskala Jail - 193 S Main St (side yard)	City of Pataskala	Licking		1.5	<div></div>	-	-
Pataskala Elementary School - 396 S High St	City of Pataskala	Licking		1.5	<div></div>	-	-
Clark House - 84 Granville St	City of Pataskala	Licking		1.6	<div></div>	-	-
Mouger Property - 75-77 Broadway	City of Pataskala	Licking		1.6	<div></div>	-	-
Beeson Dwight & Madonna - 264-266 High St	City of Pataskala	Licking		1.6	<div></div>	-	-
Snider Martin L & Judy L - 285 High St	City of Pataskala	Licking		1.6	<div></div>	-	-
Zay Residence - 144 W Mill St	City of Pataskala	Licking		1.6	<div></div>	-	-
Withdraw Colbert J & Susan F - 116 Granville St	City of Pataskala	Licking		1.6	<div></div>	-	-
Hall Residence - 134 Granville St	City of Pataskala	Licking		1.6	<div></div>	-	-
Bethel Baptist Church - NEC Vine St & Cedar	City of Pataskala	Licking		1.6	<div></div>	-	-
Niskia Property - 9362 Smoke Rd	Etna	Licking		1.6	<div></div>	+/-	-
Williams Helen Property - 189 S Vine St	City of Pataskala	Licking		1.7	<div></div>	-	-
National Road Mile Marker 240 - Pike St/2 mi E of Lima St	Etna	Licking		2.0	<div></div>	-	+/-
Pike Street Concrete Culvert - Pike St/Trib of South Fork	Etna	Licking		2.1	<div></div>	-	-
Dunlap Property - 9305 SR 310	Etna	Licking		2.3	<div></div>	-	-
Wright Property - SEC Liberty St/Pike St	Etna	Licking		2.3	<div></div>	-	-
Stover/Emswiler Property - 9354 SR 310	Etna	Licking		2.3	<div></div>	-	+/-
National Road Mile Marker 236 - N side US 40	Harrison	Licking		2.4	<div></div>	-	-
Pine Kirk Care Center - 205 E Main St (US 40)	Harrison	Licking		2.4	<div></div>	-	-
H & R Antique Center - 1063 Pike St	Etna	Licking		2.4	<div></div>	-	+/-
Green Gables Motel - S side US 40/E of 2nd St	Harrison	Licking		2.6	<div></div>	-	-
Pure Oil Truck Stop - 390 E Main St (US 40)	Harrison	Licking		2.6	<div></div>	-	-
Ellington Farmstead - 6210 Columbus Rd (SR 16)	Harrison	Licking		2.6	<div></div>	-	-
National Road Mile Marker 241 - N side Pike St/S of US 40	Etna	Licking		2.7	<div></div>	-	-

Visually Sensitive Resource	Location		VP Number ¹	Distance ²	Distance Zone	Project Visibility (Viewshed Results)	
	Town	County				+Visible - Not Visible +/- Partially Visible	
				Miles from PV Panel	<div><div></div>Near-Foreground</div> <div><div></div>Foreground</div> <div><div></div>Midground</div> <div><div></div>Background</div>	PV Panel DSM Viewshed (Topography, Structures, and Vegetation)	Collection Substation DSM Viewshed (Topography, Structures, and Vegetation)
US 40 Pipe Culvert - US 40/E of 2nd St	Harrison	Licking		2.7	<div><div></div></div>	-	-
Tempton Farm - RT 158 1/2 mi S of I -70	Harrison	Licking		2.9	<div><div></div></div>	-	-
Tempton Farm - RT 158 1/2 mi S of I-70	Harrison	Licking		3.0	<div><div></div></div>	-	-
National Road Mile Marker 235 - 1 mi E of Gale Rd	Union	Licking		3.2	<div><div></div></div>	-	-
Galbreath-Cornell Property - 11719 National Rd (US 40)	Etna	Licking		3.5	<div><div></div></div>	-	-
Silver Leaf Farm - US 40 btw Tollgate & Mink	Etna	Licking		3.6	<div><div></div></div>	-	-
Kuhn Property - 10018 Tollgate Rd	Etna	Licking		3.7	<div><div></div></div>	-	-
Carpenter Property - 9798 Tollgate Rd	Etna	Licking		3.7	<div><div></div></div>	-	-
US 40 Concrete Box Culvert - US 40/Trib Sycamore Creek	Etna	Licking		3.8	<div><div></div></div>	-	-
Kuhn Property - Tollgate Rd, South of I-70	Etna	Licking		3.9	<div><div></div></div>	-	-
Steve Gieseck Chicken Coop - 7625 Mink St	City of Pataskala	Licking		4.1	<div><div></div></div>	-	-
Charles Gieseck House - 7621 Mink St	City of Pataskala	Licking		4.1	<div><div></div></div>	-	-
National Road Mile Marker 234 - 6 mi E of Swamp Rd	Union	Licking		4.1	<div><div></div></div>	-	-
William Gieseck House - 7409 Mink St	City of Pataskala	Licking		4.1	<div><div></div></div>	-	-
George Slonaker - 8065 Mink St	City of Pataskala	Licking		4.1	<div><div></div></div>	-	-
Geysick House - 7614 Mink St	City of Pataskala	Licking		4.2	<div><div></div></div>	-	-
Gieseck House - 7290 Mink St	City of Pataskala	Licking		4.2	<div><div></div></div>	-	-
Gieseck Barn - 7438 Mink St	City of Pataskala	Licking		4.2	<div><div></div></div>	-	-
Sensabaugh Residence - NEC Mink & E Broad	City of Pataskala	Licking		4.2	<div><div></div></div>	-	-
Withern House - 12718 National Rd SW	Etna	Licking		4.2	<div><div></div></div>	-	-
Schaffer - SWC of Mink	City of Pataskala	Licking		4.2	<div><div></div></div>	-	-
Betty Harsh - 8745 Mink St	Etna	Licking		4.2	<div><div></div></div>	-	-
Pool House - 12870 E Broad St	City of Pataskala	Licking		4.3	<div><div></div></div>	-	-
E Bayes - US 40	Etna	Licking		4.3	<div><div></div></div>	-	-
Marjorie Kinser - 12917 National Rd (US 40)	Etna	Licking		4.4	<div><div></div></div>	-	-
Synder House - 150 Blacklick Rd NW	Liberty	Fairfield		4.4	<div><div></div></div>	-	-
Bernie Yankin House - SR 40 (National Rd) W of Tollgate Rd	Etna	Licking		4.4	<div><div></div></div>	-	-
Residence/Office - 13221 E Broad St	City of Pataskala	Licking		4.5	<div><div></div></div>	-	-

Visually Sensitive Resource	Location		VP Number ¹	Distance ²	Distance Zone	Project Visibility (Viewshed Results)	
						+Visible	- Not Visible
	Town	County		Miles from PV Panel	<div><div></div>Near-Foreground</div> <div><div></div>Foreground</div> <div><div></div>Midground</div> <div><div></div>Background</div>	PV Panel DSM Viewshed (Topography, Structures, and Vegetation)	Collection Substation DSM Viewshed (Topography, Structures, and Vegetation)
Richard & Margaret Harvey Barn - 12506 Palmer Rd	Etna	Licking		4.6	.	-	-
Jones Property - SWC Mink St and US 40	Etna	Licking		4.6	.	-	-
House - 12156 Palmer Rd	Etna	Licking		4.6	.	-	-
McCoy Residence - 2238 SR 310	Jersey	Licking		4.7	.	-	-
Bryan & Denetta Wolfe House - 205 Ballman Ave	Etna	Licking		4.7	.	-	-
Don's Body Shop, Inc - 13169 National Rd (US 40)	Etna	Licking		4.7	.	-	-
Aladdin's Whitehouse - 13463 E Broad St	City of Pataskala	Licking		4.7	.	-	-
Rader House - 13524 E Broad St	City of Pataskala	Licking		4.8	.	-	-
Whitlach Property - 13654 E Broad St	City of Pataskala	Licking		4.9	.	-	-
Brobst House - 7020 Blacklick-Eastern Rd	Violet	Fairfield		5.0	.	-	-
Weaver House - 13430 Pickerington Rd NW	Violet	Fairfield		5.0	.	-	-
Whitlach Residence - 13735 E Broad St	City of Pataskala	Licking		5.0	.	-	-
R Teeters House - 7095 Blacklick-Eastern (SR 204)	Violet	Fairfield		5.0	.	-	-
National Road Mile Marker 233 - N side US 40/W of SR 37	Union	Licking		5.1	.	-	-
US 40 Pipe Culvert - US 40/W of SR 37	Union	Licking		5.1	.	-	-
Historic Bridges							
None in Study Area							
OGS Cemeteries							
Sheldon Cemetery	Harrison	Licking		0.6	●	-	-
York Street/Road Cemetery	Harrison	Licking		0.9	●	-	-
Pike-Babcock-Parkinson Cemetery	Etna	Licking		0.9	●	-	-
Pataskala Cemetery	Harrison	Licking		1.2	●	-	-
Pataskala Cemetery	City of Pataskala	Licking		1.3	●	-	-
Saint Jacobs Church Cemetery	Etna	Licking		2.2	●	-	-
Old Jackson Cemetery	Harrison	Licking		2.3	●	-	-
Kirkersville Cemetery	Harrison	Licking		2.7	●	-	-
Etna Cemetery	Etna	Licking		2.7	●	-	+/-
Willowby Cemetery	Harrison	Licking		2.8	●	-	-
Joseph-Moreland Cemetery	City of Pataskala	Licking		2.9	●	-	-

Visually Sensitive Resource	Location		VP Number ¹	Distance ²	Distance Zone	Project Visibility (Viewshed Results)	
	Town	County		Miles from PV Panel	● Near-Foreground ● Foreground ● Midground ● Background	+Visible - Not Visible	+/- Partially Visible
						PV Panel DSM Viewshed (Topography, Structures, and Vegetation)	Collection Substation DSM Viewshed (Topography, Structures, and Vegetation)
Wickliff Cemetery	City of Pataskala	Licking		3.2	●	-	-
Howard Farm-Shawe Cemetery	Harrison	Licking		3.3	●	-	-
Holy Cross Cemetery	Etna	Licking		3.3	●	-	-
Mount Zion Cemetery	Liberty	Fairfield		4.2	●	-	-
Fletcher Chapel Cemetery	Liberty	Fairfield		4.2	●	-	-
Refugee Baptist-Smith-Rufugee Cemetery	Liberty	Fairfield		4.4	●	-	-
Devils Den Cemetery	Union	Licking		4.7	●	-	-
Houser Cemetery	Violet	Fairfield		4.9	●	-	-
Boby-Roby Cemetery	Walnut	Fairfield		5.0	●	-	-
Ohio Historical Marker							
24-45 Pataskala Elementary School	City of Pataskala	Licking		1.5	●	-	-
20-45 Conine Homestead	City of Pataskala	Licking		1.6	●	-	-
15-45 Outville	Harrison	Licking		1.7	●	-	-
Designated Scenic Resources							
Rivers Designated as National or State Wild, Scenic or Recreational							
None in Study Area							
Sites, Areas, Lakes, Reservoirs or Highways Designated or Eligible for Designation as Scenic							
Historic National Road	Truro, Bowling Green, Etna, Franklin, Harrison, Licking, Union	Licking		0.9	●	+/-	+/-
Other Designated Scenic Resources (Easements, Roads, Districts, and Overlooks)							
None in Study Area							
Public Lands and Recreational Resources							
National Parks, Recreation Areas, Seashores, and Forests							
None in Study Area							
National Natural Landmarks							
None in Study Area							
National Wildlife Refuges							
None in Study Area							
Heritage Areas							
Ohio National Road	Truro, Bowling Green, Etna, Franklin, Harrison, Licking, Union	Licking		0.9	●	+/-	+/-
State Parks							
None in Study Area							
State Nature Preserves							
None in Study Area							

	Location			Distance ²	Distance Zone	Project Visibility (Viewshed Results)	
						+ Visible - Not Visible	+/- Partially Visible
	Town	County		Miles from PV Panel	<div><div></div>Near-Foreground</div> <div><div></div>Foreground</div> <div><div></div>Midground</div> <div><div></div>Background</div>	PV Panel DSM Viewshed (Topography, Structures, and Vegetation)	Collection Substation DSM Viewshed (Topography, Structures, and Vegetation)
Visually Sensitive Resource			VP Number ¹				
Wildlife Areas							
None in Study Area							
State Forests							
None in Study Area							
State Fishing/Waterway Access							
None in Study Area							
Other State Lands							
None in Study Area							
Trails							
State and Federal Trails							
No stand-alone state/federal trails were identified. However, state trails occur within (and are evaluated as part of) state lands identified elsewhere in this table.							
Snowmobile/ATV Trails							
None in Study Area							
Bike Trails/Routes							
Pataskala Municipal Park Trail	Harrison	Licking		1.0	<div><div></div></div>	-	-
Other Trails							
None in Study Area							
Local Parks and Recreation Areas							
Pataskala Lion's Baseball Park	Etna, Harrison	Licking		0.6	<div><div></div></div>	+/-	+/-
Pataskala Municipal Park	Harrison	Licking		1.1	<div><div></div></div>	-	-
Broadview Golf Course	City of Pataskala	Licking		1.6	<div><div></div></div>	-	-
Beechwood Trails Park and Pool	Harrison	Licking		1.9	<div><div></div></div>	-	-
Cumberland Trail Golf Club	Etna	Licking		2.2	<div><div></div></div>	-	+/-
William V. Karr Park	City of Pataskala	Licking		2.3	<div><div></div></div>	-	-
The Thomas J. Evans Foundation Park	City of Pataskala	Licking		2.3	<div><div></div></div>	-	-
Publicly Accessible Conservation Lands/Easements							
Clean Ohio Farmland 55	Union	Licking		4.0	<div><div></div></div>	-	-
Rivers and Streams with Public Fishing Access							
South Fork Licking River	City of Pataskala, Towns of Etna, Harrison, Union	Licking		0.0	<div><div></div></div>	+/-	+/-
Muddy Fork	City of Pataskala, Town of Harrison	Licking		1.1	<div><div></div></div>	-	-
Poplar Creek	Liberty	Fairfield		3.0	<div><div></div></div>	-	-
Bell Run	Union	Licking		3.7	<div><div></div></div>	-	-
Sycamore Creek	City of Pataskala, Towns of Violet, Etna	Fairfield, Licking		4.2	<div><div></div></div>	-	-

	Location			Distance ²	Distance Zone	Project Visibility (Viewshed Results)	
						+ Visible - Not Visible	+/- Partially Visible
	Town	County		Miles from PV Panel	<div> <div></div> Near-Foreground <div></div> Foreground <div></div> Midground <div></div> Background </div>	PV Panel DSM Viewshed (Topography, Structures, and Vegetation)	Collection Substation DSM Viewshed (Topography, Structures, and Vegetation)
Visually Sensitive Resource			VP Number¹				
Pawpaw Creek	Liberty	Fairfield		4.3	.	-	-
Beaver Run	Union	Licking		4.3	.	-	-
Named Lakes, Ponds, and Reservoirs							
None in Study Area							
High-Use Public Areas							
State, US, and Interstate Highways							
US Hwy 40	Etna, Harrison, Union	Licking		0.9	●	+/-	+/-
State Route 16	City of Pataskala, Towns of Jefferson, Granville, Harrison, St. Albans, Union	Licking		1.15	●	+/-	+/-
	City of Pataskala, Towns of Liberty, Etna, Harrison, Jersey, Liberty, St. Albans	Fairfield, Licking		1.34	●	+/-	+/-
State Route 310							
State Route 158	Greenfield, Liberty, Etna, Harrison	Fairfield, Licking		1.64	●	-	+/-
I-70	Violet, Bowling Green, Etna, Harrison, Licking, Union	Fairfield, Licking		1.68	●	+/-	+/-
State Route 204	Liberty, Violet, Walnut, Thorn	Fairfield		3.64	●	-	-
Schools							
Watkins Middle School	Etna	Licking		0.42	●	+/-	+/-
Watkins Memorial High School	Etna	Licking		0.5	●	+/-	+/-
Pataskala Elementary School	City of Pataskala	Licking		1.5	●	-	-
Liberty Christian Academy	Etna	Licking		2	●	+/-	-
Kirkersville Elementary School	Harrison	Licking		2.05	●	-	-
Southwest Licking Early Learning Center	Etna	Licking		2.32	●	-	-
Etna Elementary School	Etna	Licking		2.55	●	-	+/-
Cities, Villages, Unincorporated Areas							
<i>Cities and Villages</i>							
City of Pataskala	City of Pataskala, Town of Harrison	Licking		0.46	●	+/-	+/-
Village of Kirkersville	Etna, Harrison	Licking		1.87	●	-	+/-
City of Reynoldsburg	Violet, Jefferson, Truro, Etna	Fairfield, Licking		4.95	.	-	-
Unincorporated Areas							
None in Study Area							

¹ If no viewpoint (VP) number is indicated, no photo was obtained during fieldwork.

² For large areas and linear sites, approximate distance to the nearest turbine was measured from the respective area’s closest point.

This foregoing document was electronically filed with the Public Utilities

Commission of Ohio Docketing Information System on

3/26/2021 4:31:57 PM

in

Case No(s). 20-1757-EL-BGN

Summary: Application Exhibit S - Visual Resource Assessment and Mitigation Plan Part 3 of 3
electronically filed by Teresa Orahod on behalf of Dylan F. Borchers