



Union Ridge Solar

Exhibit Q

Phase I History Architecture Reconnaissance Survey

Part 2 of 4

**Case No. 20-1757-EL-BGN**

## Figures



Figure 1. Political map of Ohio showing the approximate location of the project.



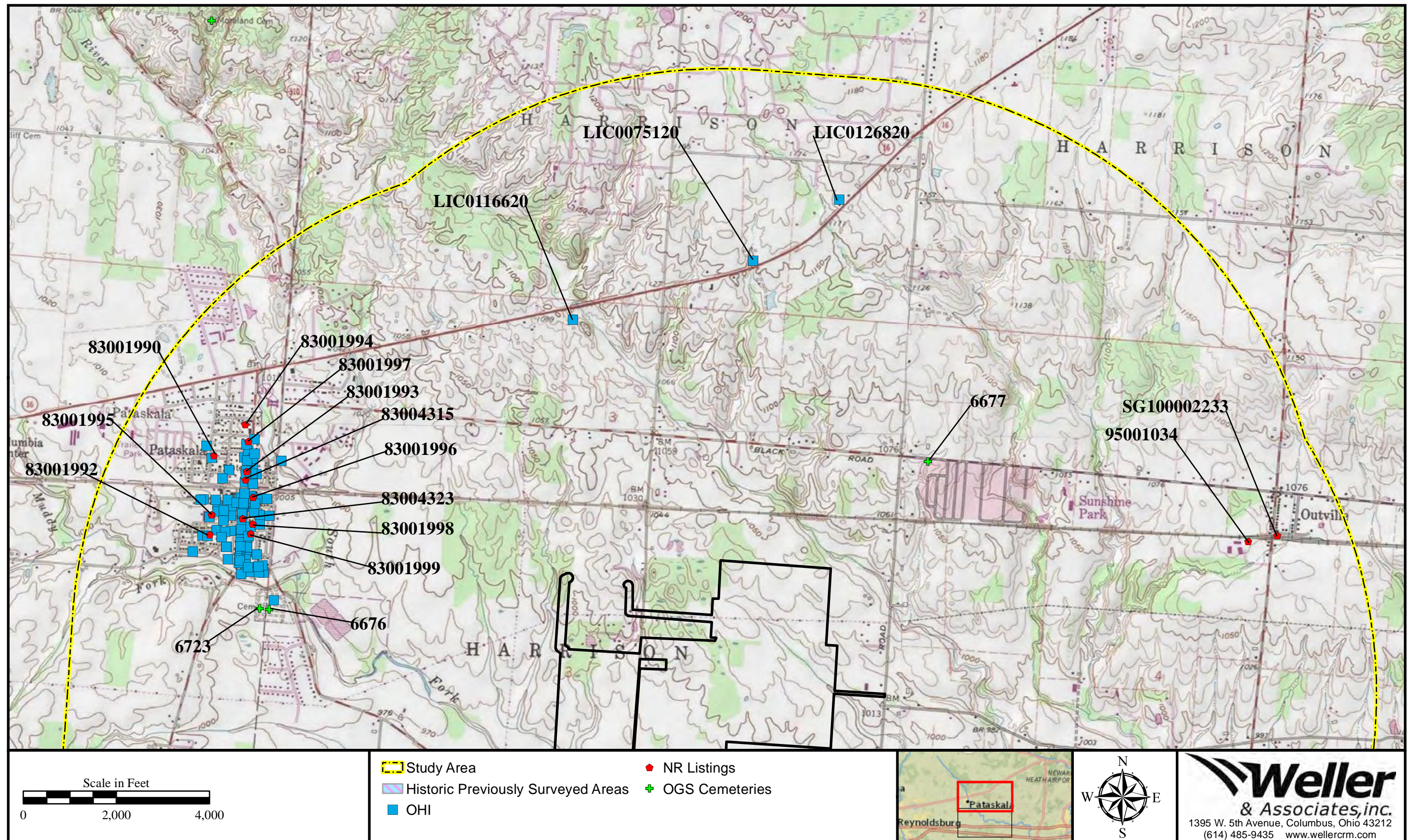


Figure 2. Portion of the USGS 1992 Pataskala, Ohio 7.5 Minute (Topographic) map indicating the project area and previously recorded resources in the study area.



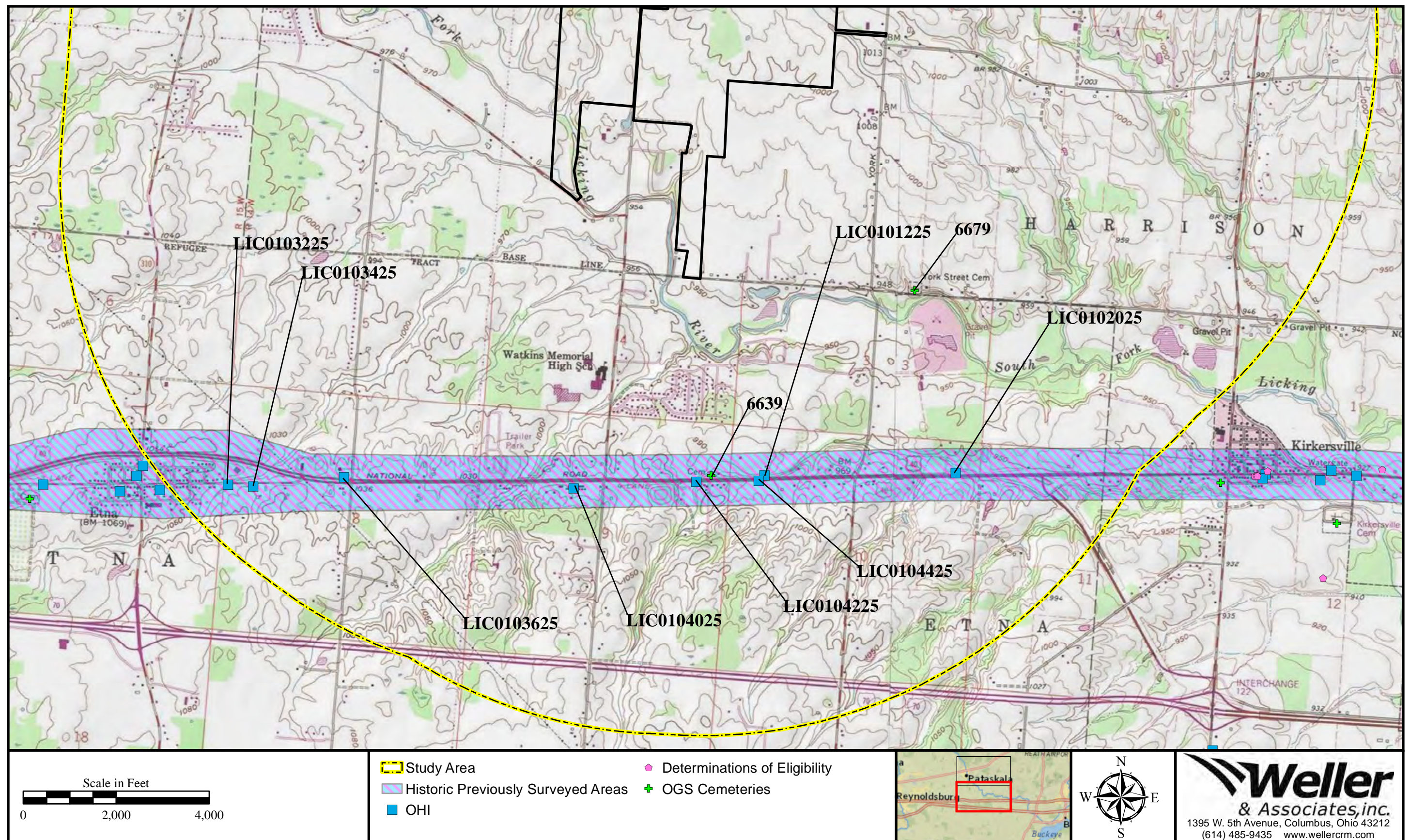


Figure 3. Portion of the USGS 1992 Pataskala, Ohio 7.5 Minute (Topographic) map indicating the project area and previously recorded resources in the study area.



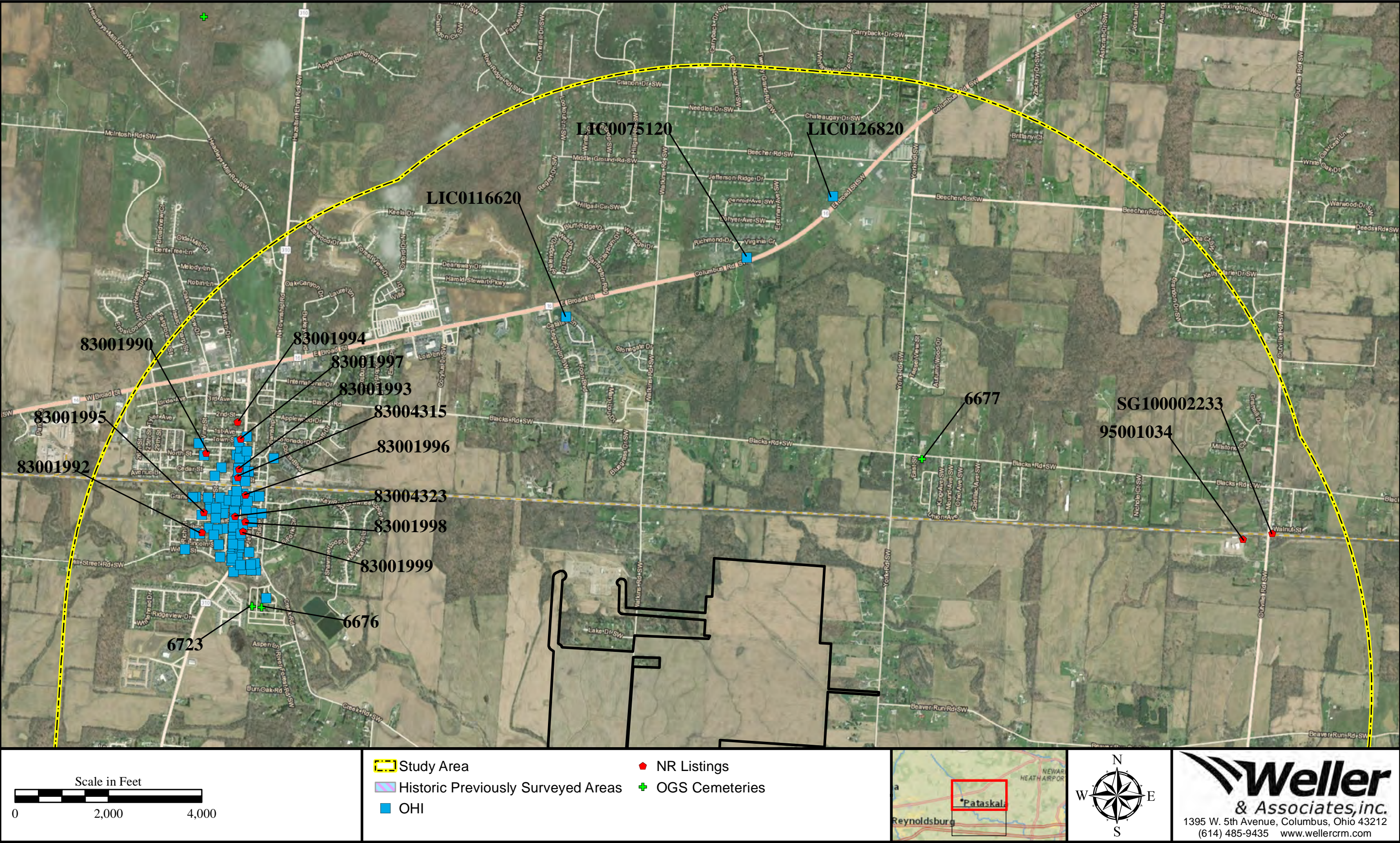


Figure 4. Aerial map indicating the location of the project area and recorded resources within the study area.



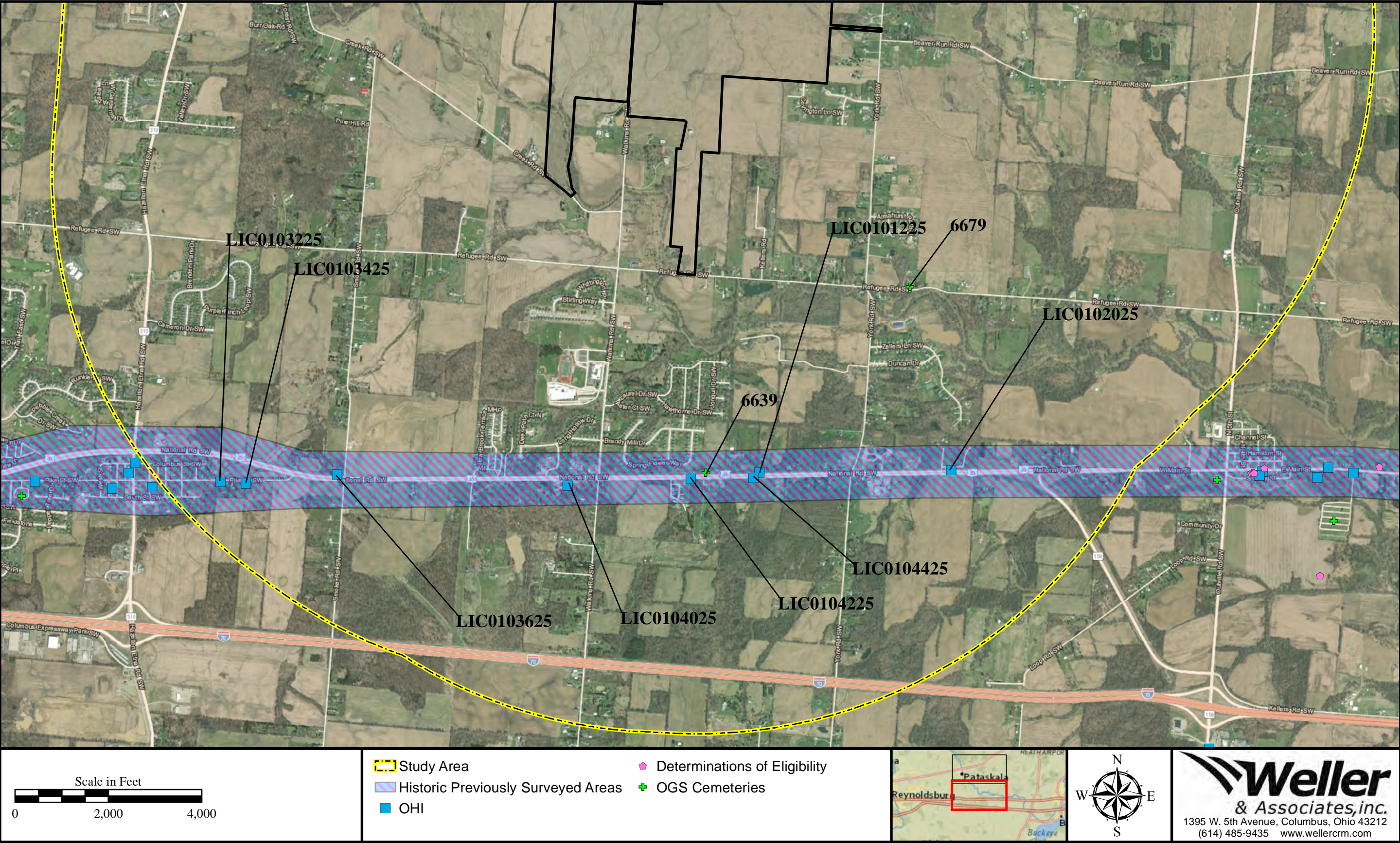


Figure 5. Aerial map indicating the location of the project area and recorded resources within the study area.



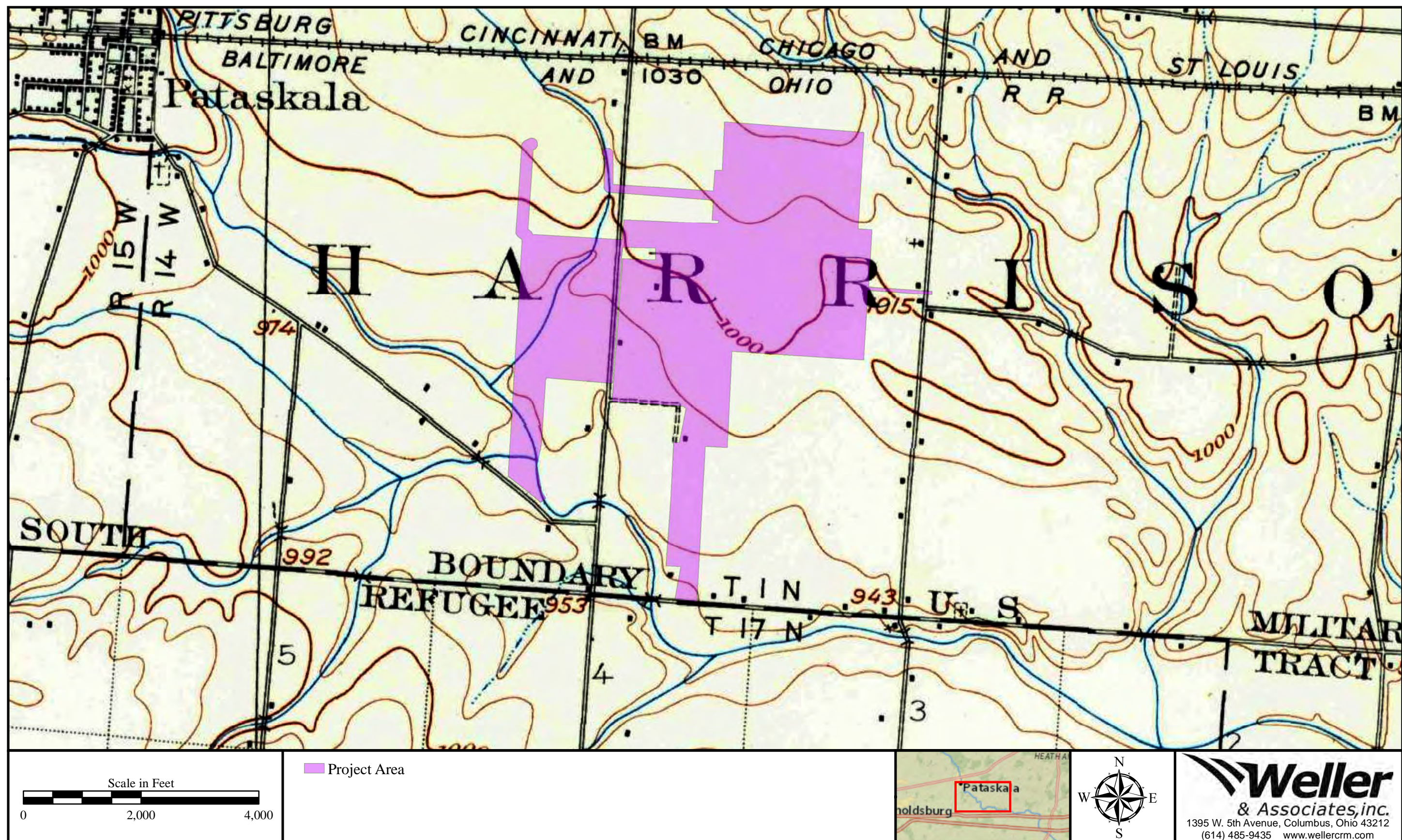


Figure 6. Portion of the USGS 1907 *Thurston, Ohio 15 Minute Series (Topographic)* map indicating the approximate location of the project.



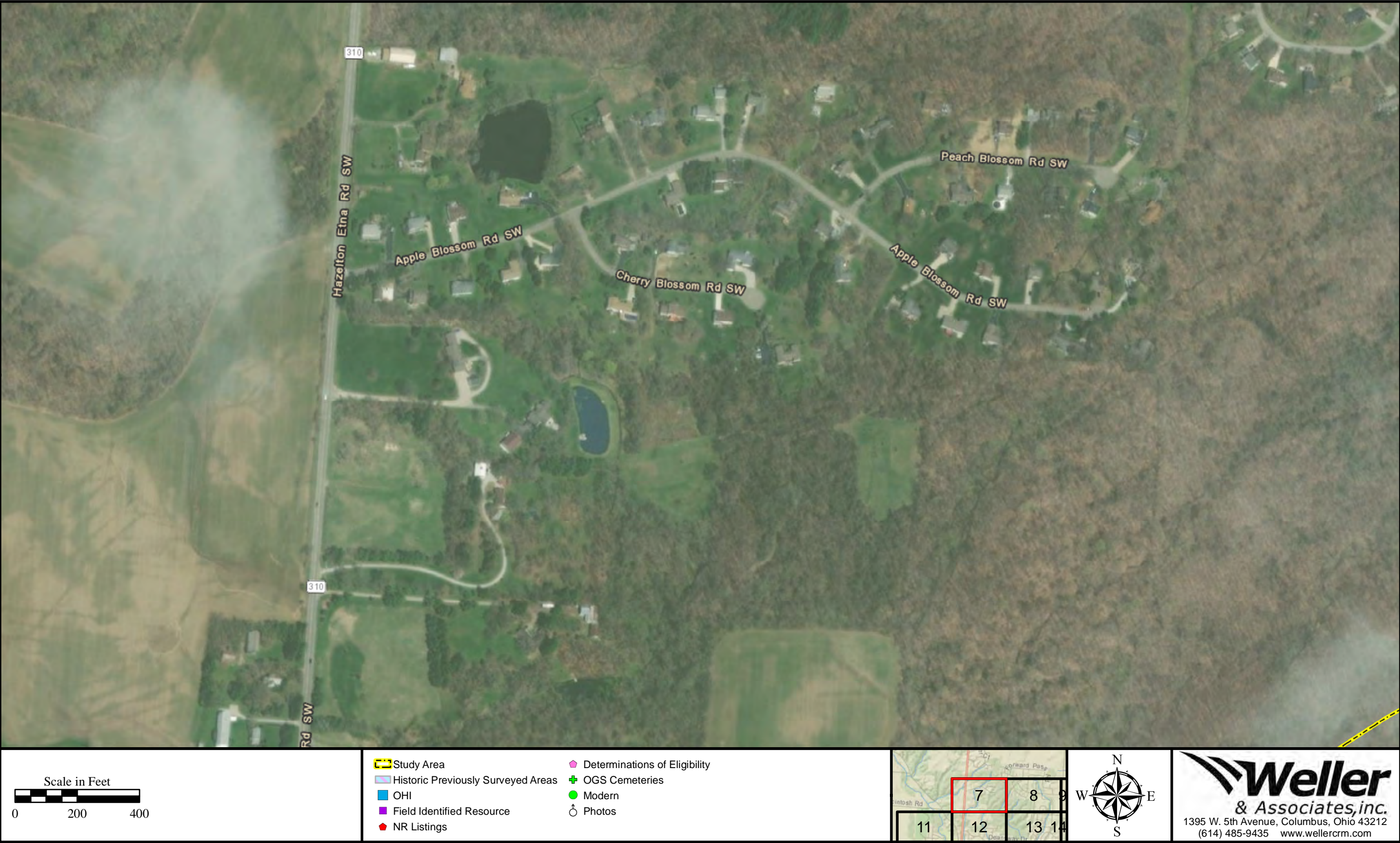


Figure 7. Fieldwork results and photo orientation map.



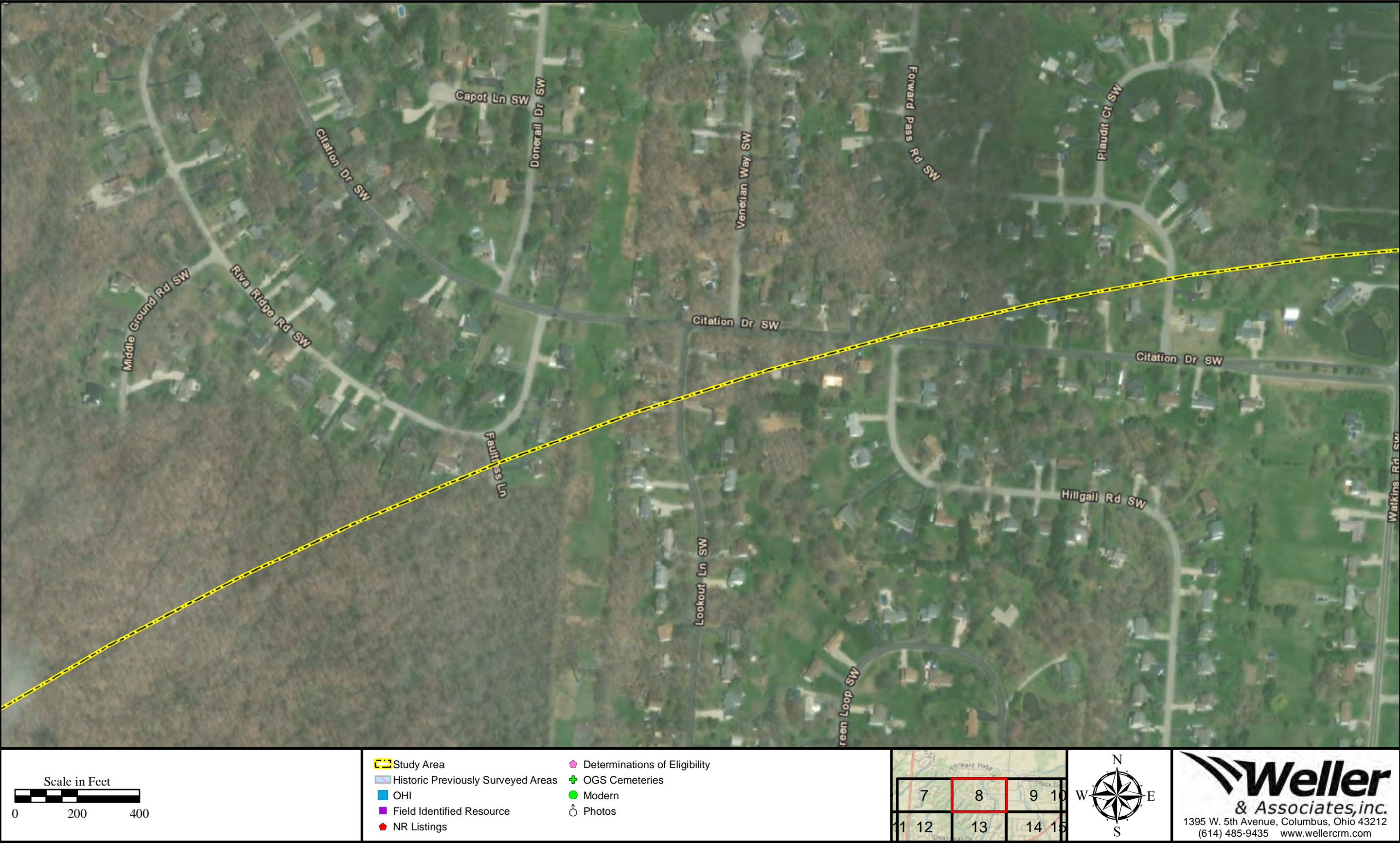


Figure 8. Fieldwork results and photo orientation map.





Figure 9. Fieldwork results and photo orientation map.





Figure 10. Fieldwork results and photo orientation map.





Figure 11. Fieldwork results and photo orientation map.





Figure 12. Fieldwork results and photo orientation map.





Figure 13. Fieldwork results and photo orientation map.





Figure 14. Fieldwork results and photo orientation map.



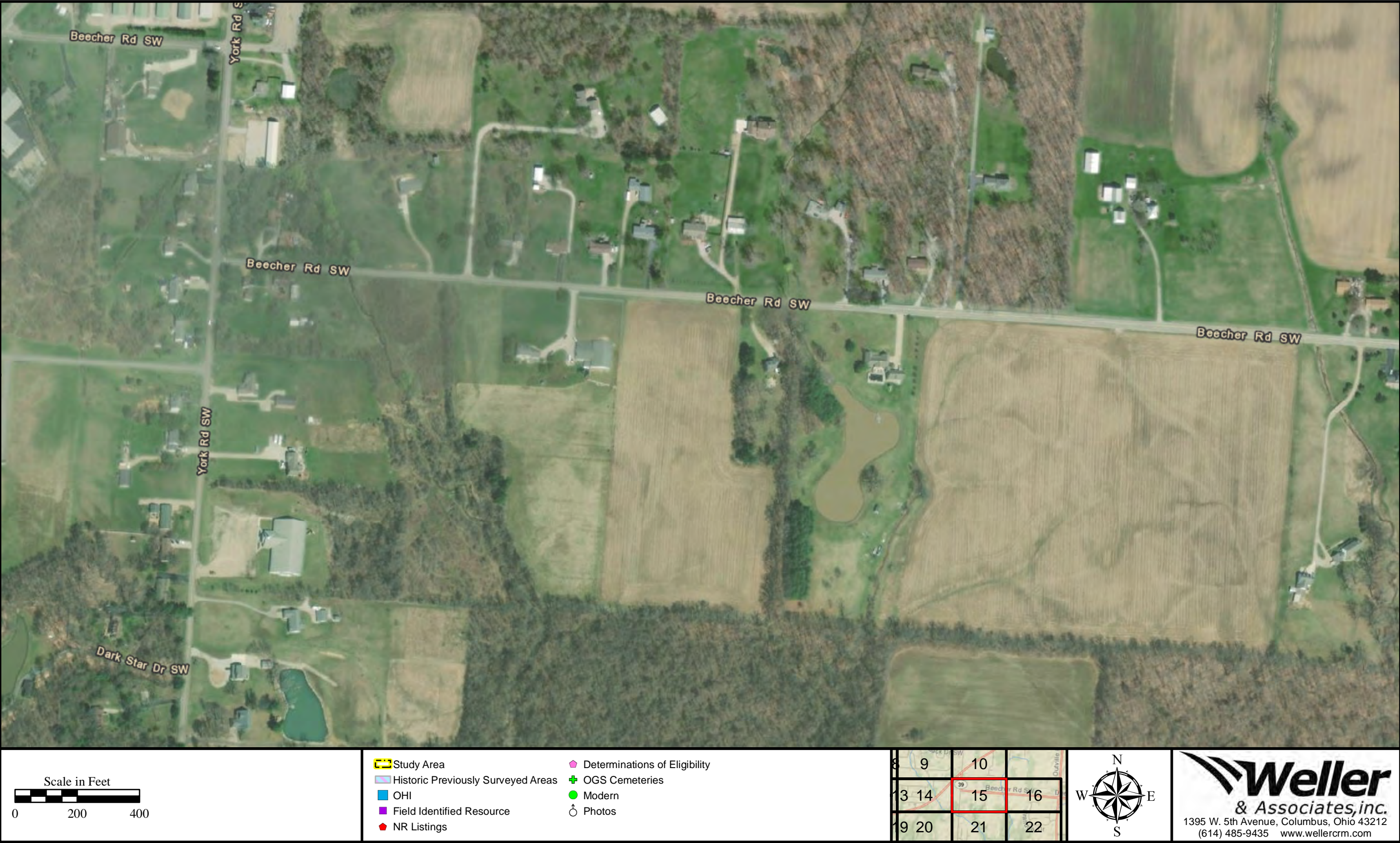


Figure 15. Fieldwork results and photo orientation map.



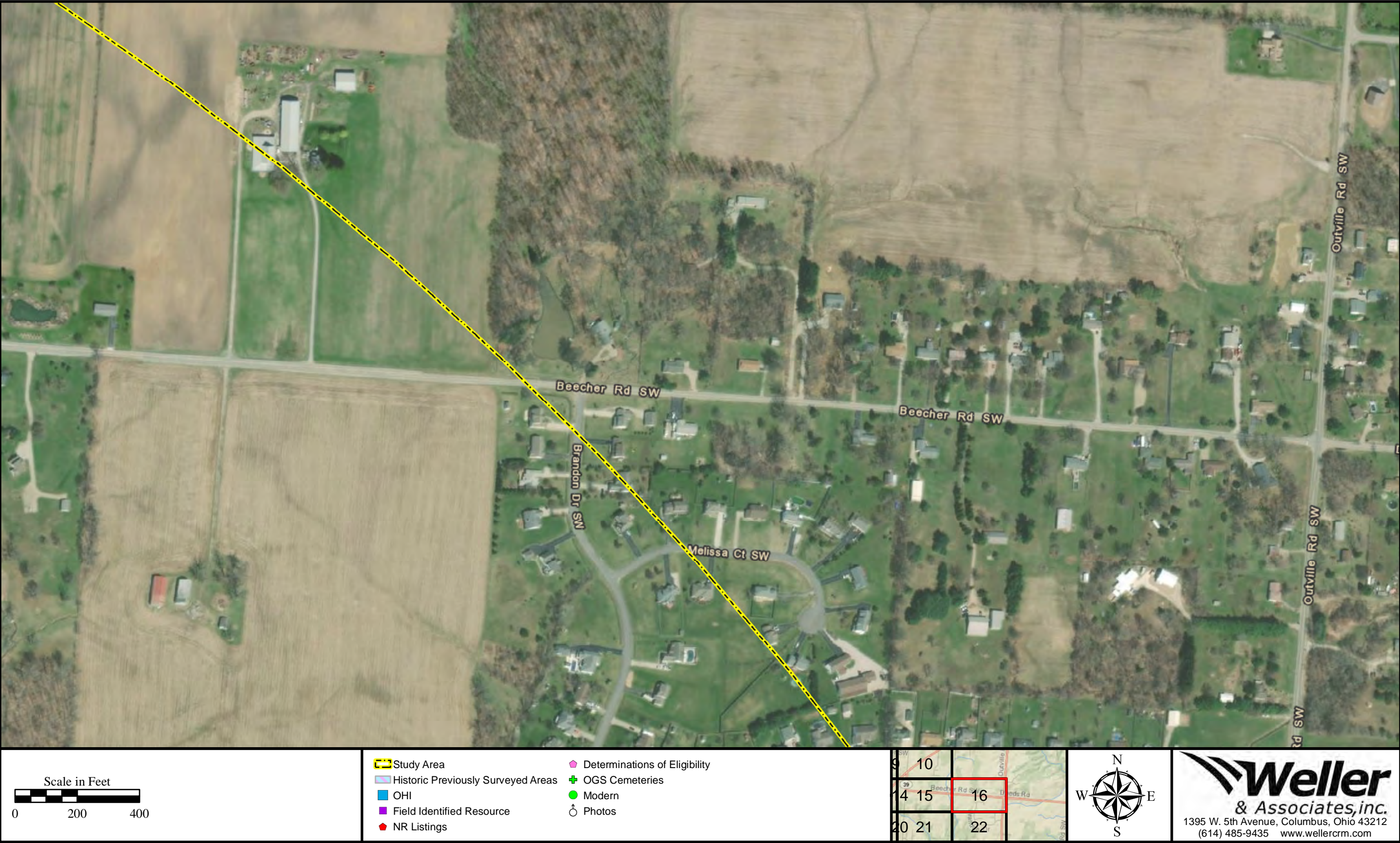


Figure 16. Fieldwork results and photo orientation map.



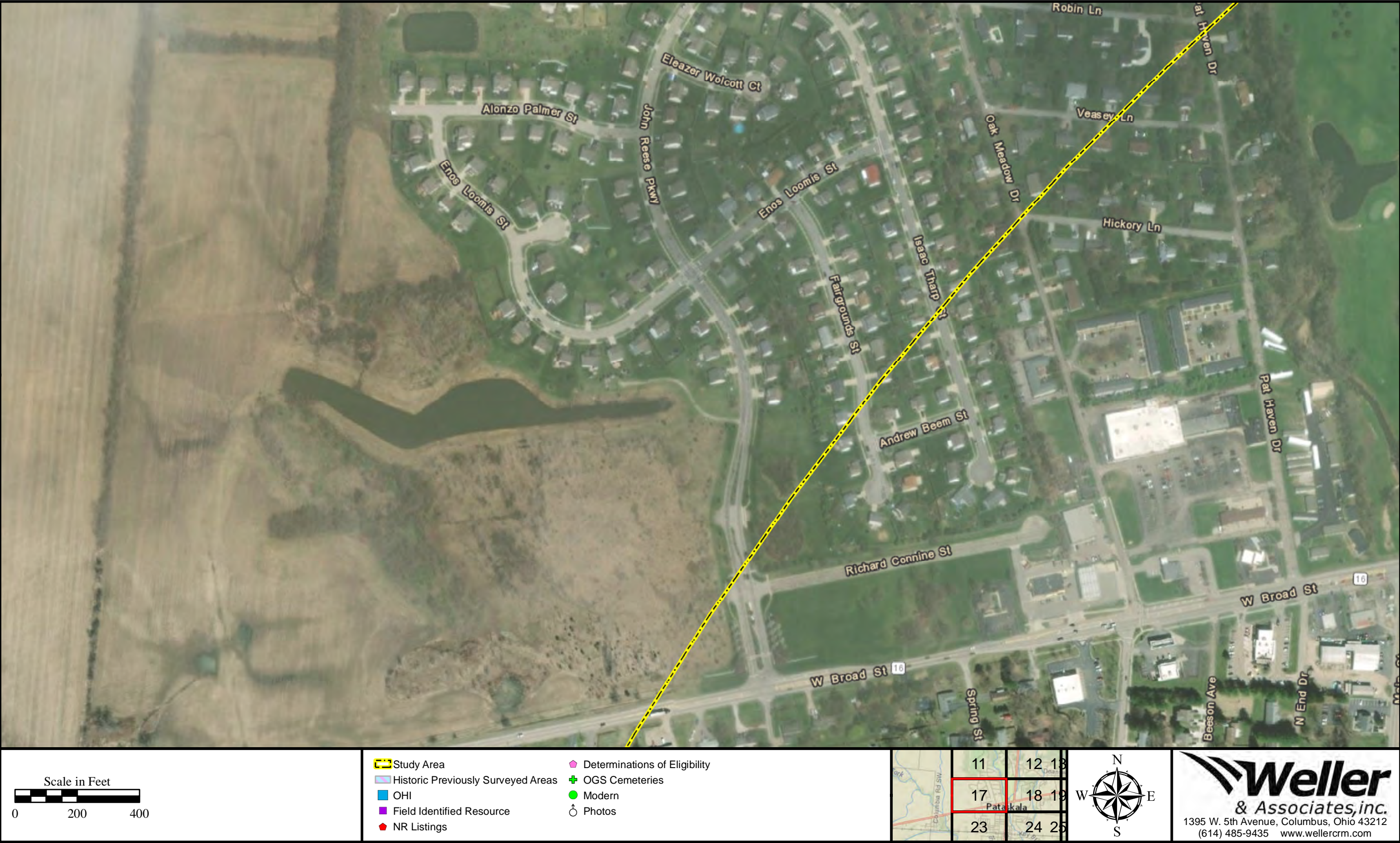


Figure 17. Fieldwork results and photo orientation map.





Figure 18. Fieldwork results and photo orientation map.





Figure 19. Fieldwork results and photo orientation map.





Figure 20. Fieldwork results and photo orientation map.



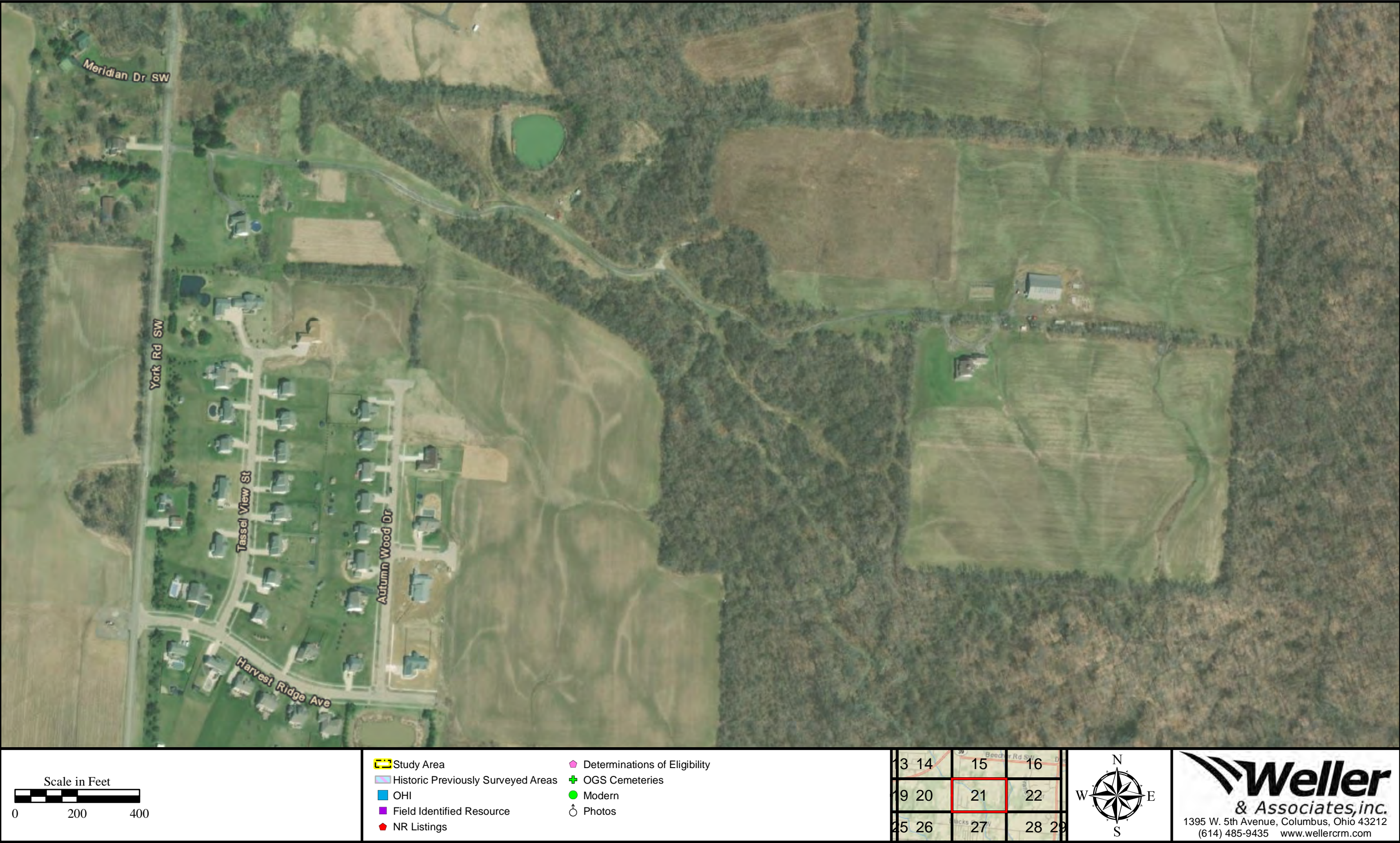


Figure 21. Fieldwork results and photo orientation map.





Figure 22. Fieldwork results and photo orientation map.





Figure 23. Fieldwork results and photo orientation map.





Figure 24. Fieldwork results and photo orientation map.





Figure 25. Fieldwork results and photo orientation map.





Figure 26. Fieldwork results and photo orientation map.



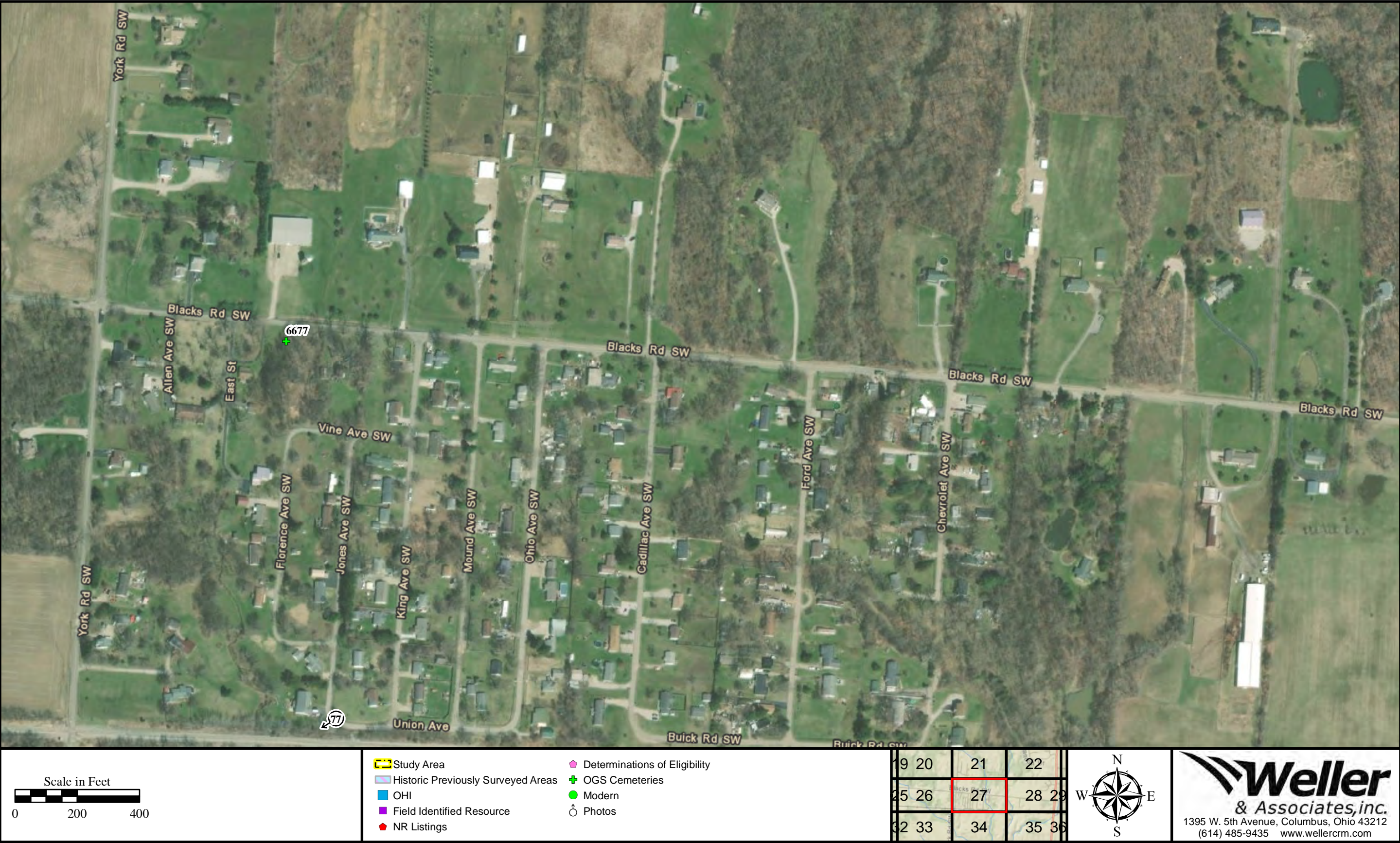


Figure 27. Fieldwork results and photo orientation map.



**This foregoing document was electronically filed with the Public Utilities**

**Commission of Ohio Docketing Information System on**

**3/26/2021 4:18:55 PM**

**in**

**Case No(s). 20-1757-EL-BGN**

Summary: Application Exhibit Q - Phase I History Architecture Reconnaissance Survey Part 2 of 4 electronically filed by Teresa Orahod on behalf of Dylan F. Borchers