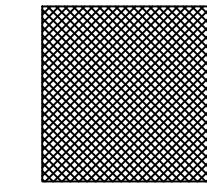
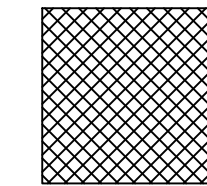
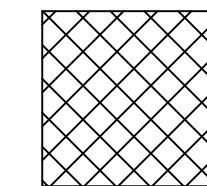


ALTERNATIVE SEDIMENT BASIN NOTE:

1. SEE PLANS FOR RECOMMENDED ALTERNATIVE SEDIMENT BASIN LOCATIONS. THESE ARE BEING SHOWN FOR ILLUSTRATION PURPOSES IN AN EFFORT TO NOT IMPACT THE PROVIDED ARRAY LAYOUT CONFIGURATION. THE ITERATIVE NATURE OF THE LAYOUT DESIGN PROCESS WILL OCCUR PRIOR TO FUTURE PLANS SETS. ADDITIONAL CALCULATIONS ARE NEEDED TO CONFIRM SIZING OF COMPOST FILTER SOCK. IF COMPOST FILTER SOCK SIZING IS INADEQUATE, ARRAY LAYOUT MODIFICATIONS MAY BE REQUIRED TO ACCOMMODATE THE ALTERNATIVE SEDIMENT BASIN LOCATIONS FOR COMPLIANCE WITH CHAPTER 5, 6 & 7 OF THE OHIO RAINWATER AND LAND DEVELOPMENT MANUAL.

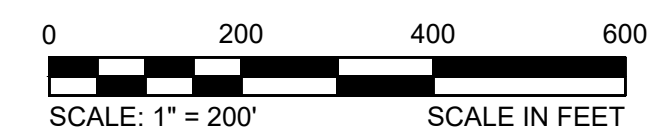
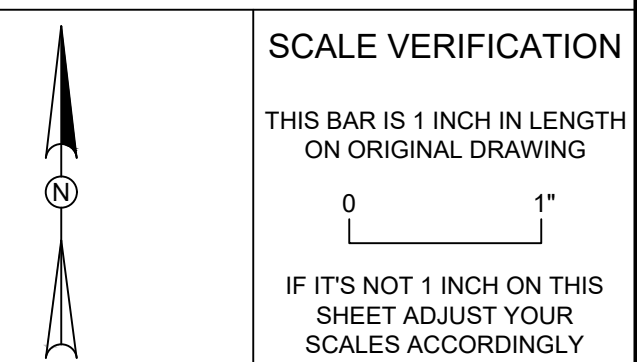
CONCEPT GRADING LEGEND:



*SEE SHEET C-001 FOR EARTHWORK QUANTITIES AND EARTHWORK NOTES.

[illegible]

10% DESIGN
NOT FOR CONSTRUCTION



ORIGINAL DRAWING SIZE IS 24 x 36

GRADING & EROSION CONTROL PLAN

BIRCH SOLAR PROJECT
ALLEN COUNTY, OH
AUGLAIZE COUNTY, OH



10% CIVIL DESIGN

PROJECT NO. 20212135.001A	C-312
ISSUE DATE 01/14/2021	
CURRENT REVISION A	
DESIGNED BY ARH	
DRAWN BY ARH	
CHECKED BY MDI	
APPROVED BY CGO	SHEET C-312 of 42

This foregoing document was electronically filed with the Public Utilities

Commission of Ohio Docketing Information System on

2/17/2021 3:22:21 PM

in

Case No(s). 20-1605-EL-BGN

Summary: Notice - Notice - Large Exhibit A, Site Plan (Part 13 of 14) electronically filed by Christine M.T. Pirik on behalf of Birch Solar 1, LLC