

S KEMP ROAD

ZERKLE ROAD

AUGLAIZE COUNTY

ALLEN COUNTY

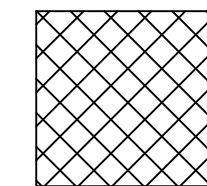
MATCHLINE •

W HUME ROAD

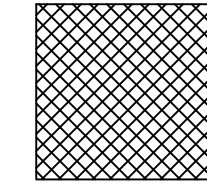
**ALTERNATIVE SEDIMENT BASIN NOTE:**

1. SEE PLANS FOR RECOMMENDED ALTERNATIVE SEDIMENT BASIN LOCATIONS. THESE ARE BEING SHOWN FOR ILLUSTRATION PURPOSES IN AN EFFORT TO NOT IMPACT THE PROVIDED ARRAY LAYOUT CONFIGURATION. THE ITERATIVE NATURE OF THE LAYOUT DESIGN PROCESS WILL OCCUR PRIOR TO FUTURE PLAN SETS. ADDITIONAL CALCULATIONS ARE NEEDED TO CONFIRM SIZING OF COMPOST FILTER SOCK. IF COMPOST FILTER SOCK SIZING IS INADEQUATE, ARRAY LAYOUT MODIFICATIONS MAY BE REQUIRED TO ACCOMMODATE THE REQUIRED SIZED SEDIMENT BASIN LOCATIONS FOR COMPLIANCE WITH CHAPTERS 5, 6 & 7 OF THE OHIO RAINWATER AND LAND DEVELOPMENT MANUAL.

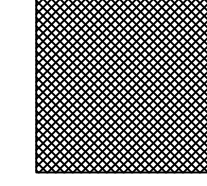
**CONCEPT GRADING LEGEND:**



PROPOSED FILL  
(AREAS OF 10"-30" OF FLOOD DEPTH)



PROPOSED FILL  
(AREAS OF 18"-30" OF FLOOD DEPTH)



PROPOSED FILL  
(AREAS OF 24"-30" OF FLOOD DEPTH)

\*SEE SHEET C-001 FOR EARTHWORK QUANTITIES AND EARTHWORK NOTES.

[illegible]

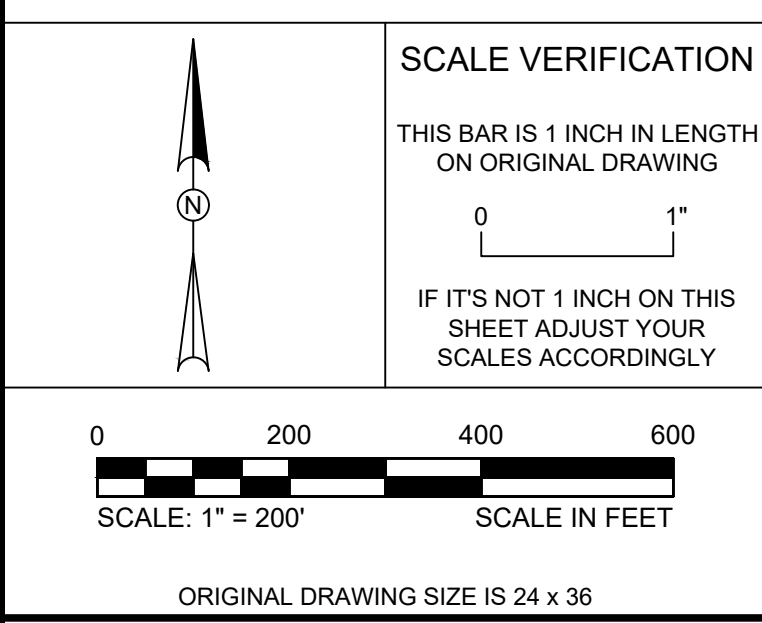
***KLEINFELDER***  
*Bright People. Right Solutions.*

707 17<sup>TH</sup> STREET, SUITE 3000  
DENVER, CO 80202  
PHONE: 303-237-6801  
WWW.KLEINFELDER.COM

[WWW.KLEINFELDER.COM](http://WWW.KLEINFELDER.COM)

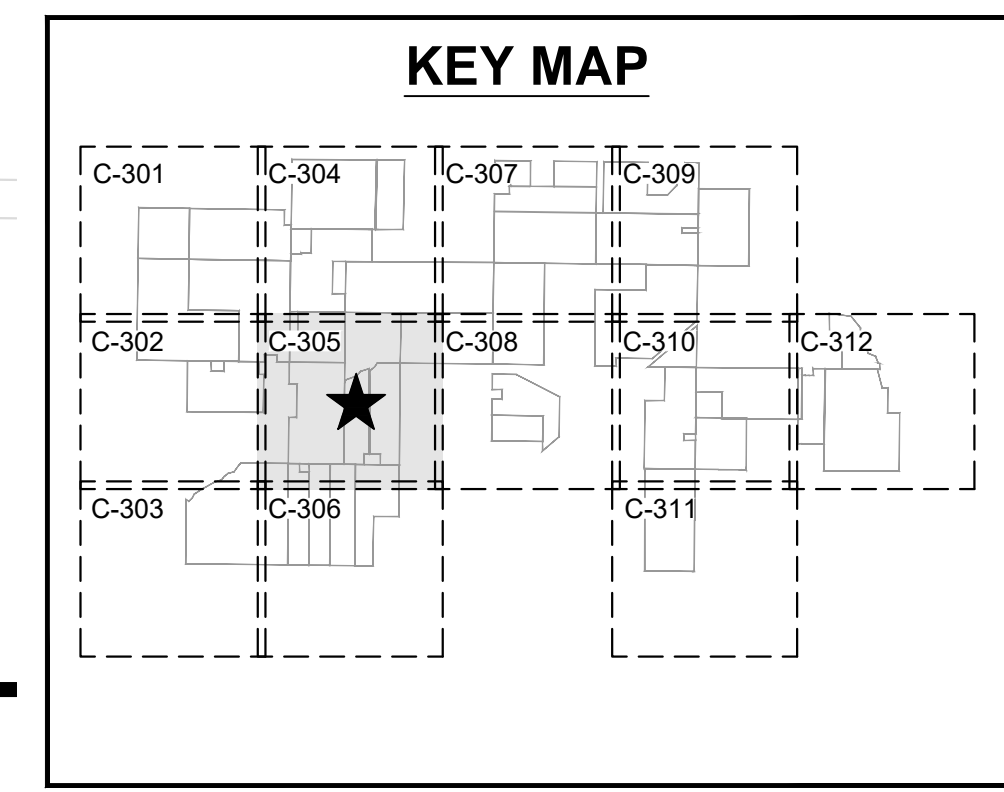
[illegible]

**10% DESIGN**  
NOT FOR CONSTRUCTION



## GRADING & EROSION CONTROL PLAN

BIRCH SOLAR PROJECT  
ALLEN COUNTY, OH  
AUGLAIZE COUNTY, OH



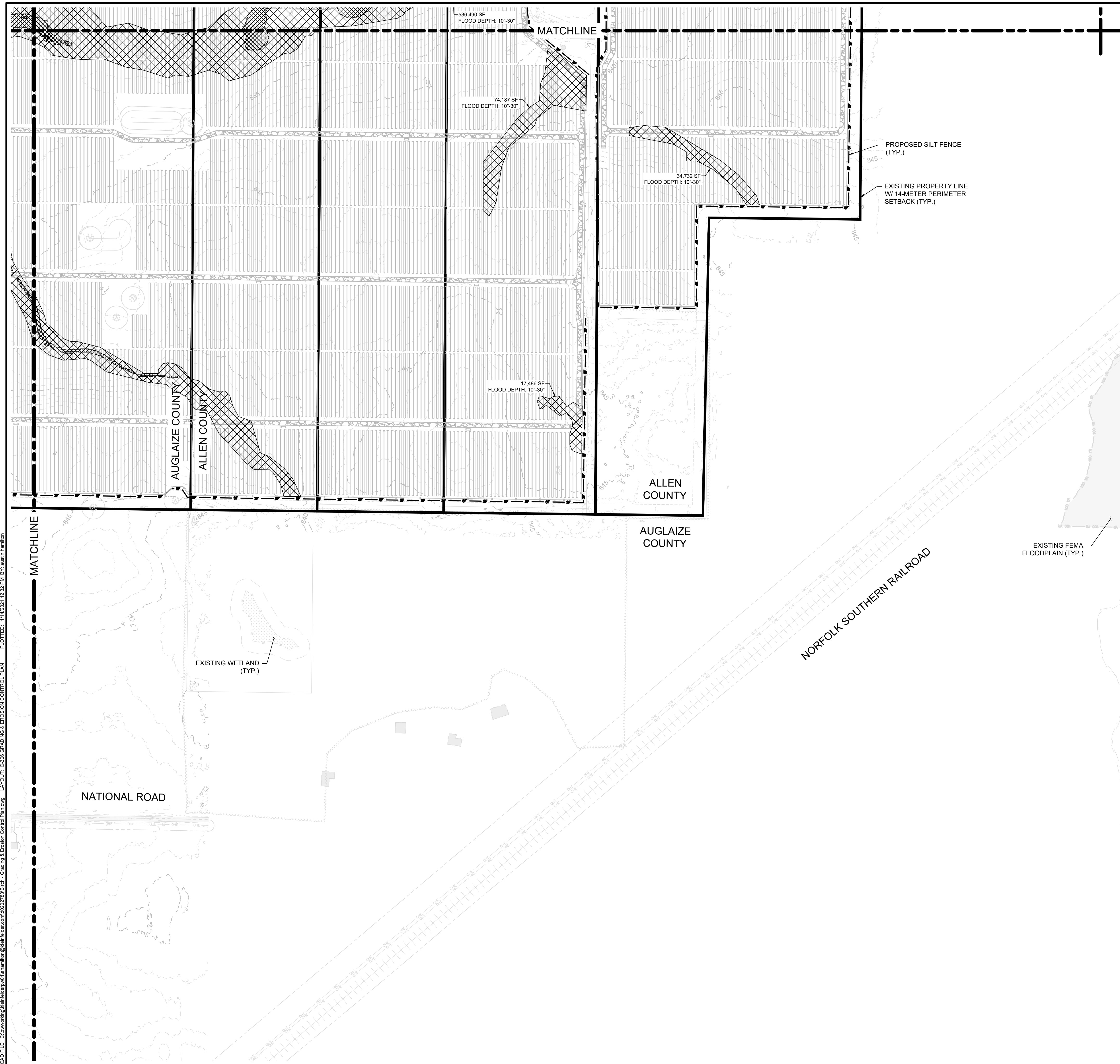
lightsource bp

LIGHTSOURCE bp  
400 MONTGOMERY ST, 8TH FLOOR  
SAN FRANCISCO, CA 94104

# 10% CIVIL DESIGN

PROJECT NO.	20212135.001A	C-305	
ISSUE DATE	01/14/2021		
CURRENT REVISION	A		
DESIGNED BY	ARH		
DRAWN BY	ARH		
CHECKED BY	MDI		
APPROVED BY	CGO	SHEET	C-305 of 42

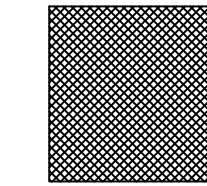
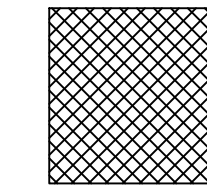
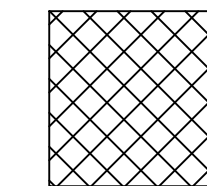




**ALTERNATIVE SEDIMENT BASIN NOTE:**

1. SEE PLANS FOR RECOMMENDED ALTERNATIVE SEDIMENT BASIN LOCATIONS. THESE ARE BEING SHOWN FOR ILLUSTRATION PURPOSES IN AN EFFORT TO NOT IMPACT THE PROVIDED ARRAY LAYOUT CONFIGURATION. THE ITERATIVE NATURE OF THE LAYOUT DESIGN PROCESS WILL OCCUR PRIOR TO FUTURE PLAN SETS. ADDITIONAL CALCULATIONS ARE NEEDED TO CONFIRM SIZING OF COMPOST FILTER SOCK. IF COMPOST FILTER SOCK SIZING IS INADEQUATE, ARRAY LAYOUT MODIFICATIONS MAY BE REQUIRED TO ACCOMMODATE THE ALTERNATIVE SEDIMENT BASIN LOCATIONS FOR COMPLIANCE WITH CHAPTER 5, 6 & 7 OF THE OHIO RAINWATER AND LAND DEVELOPMENT MANUAL.

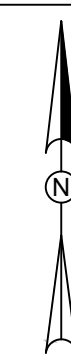
**CONCEPT GRADING LEGEND:**



\*SEE SHEET C-001 FOR EARTHWORK QUANTITIES AND EARTHWORK NOTES.

[illegible]

**10% DESIGN**  
NOT FOR CONSTRUCTION



SCALE VERIFICATION

THIS BAR IS 1 INCH IN LENGTH  
ON ORIGINAL DRAWING

IF IT'S NOT 1 INCH ON THIS  
SHEET ADJUST YOUR  
SCALES ACCORDINGLY



ORIGINAL DRAWING SIZE IS 24 x 36

## GRADING & EROSION CONTROL PLAN

BIRCH SOLAR PROJECT  
ALLEN COUNTY, OH  
AUGLAIZE COUNTY, OH

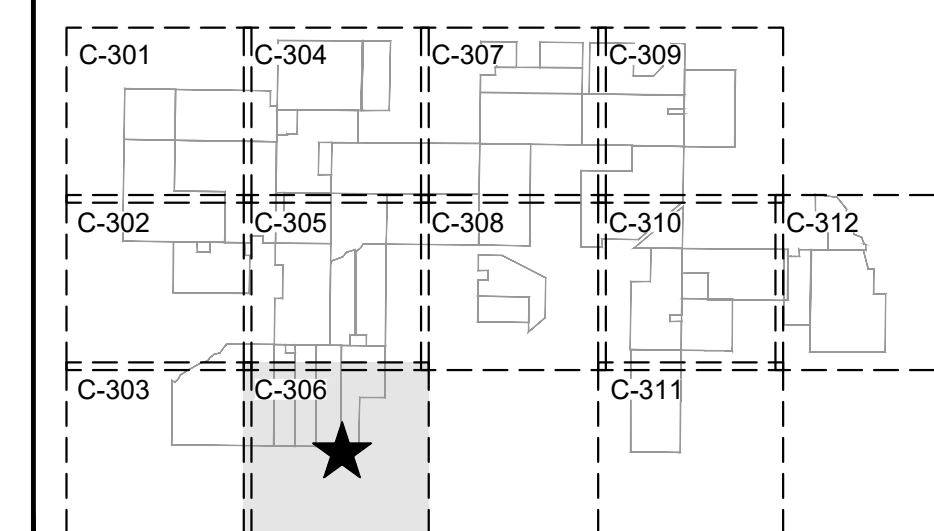


LIGHTSOURCE bp  
400 MONTGOMERY ST, 8TH FLOOR  
SAN FRANCISCO, CA 94104

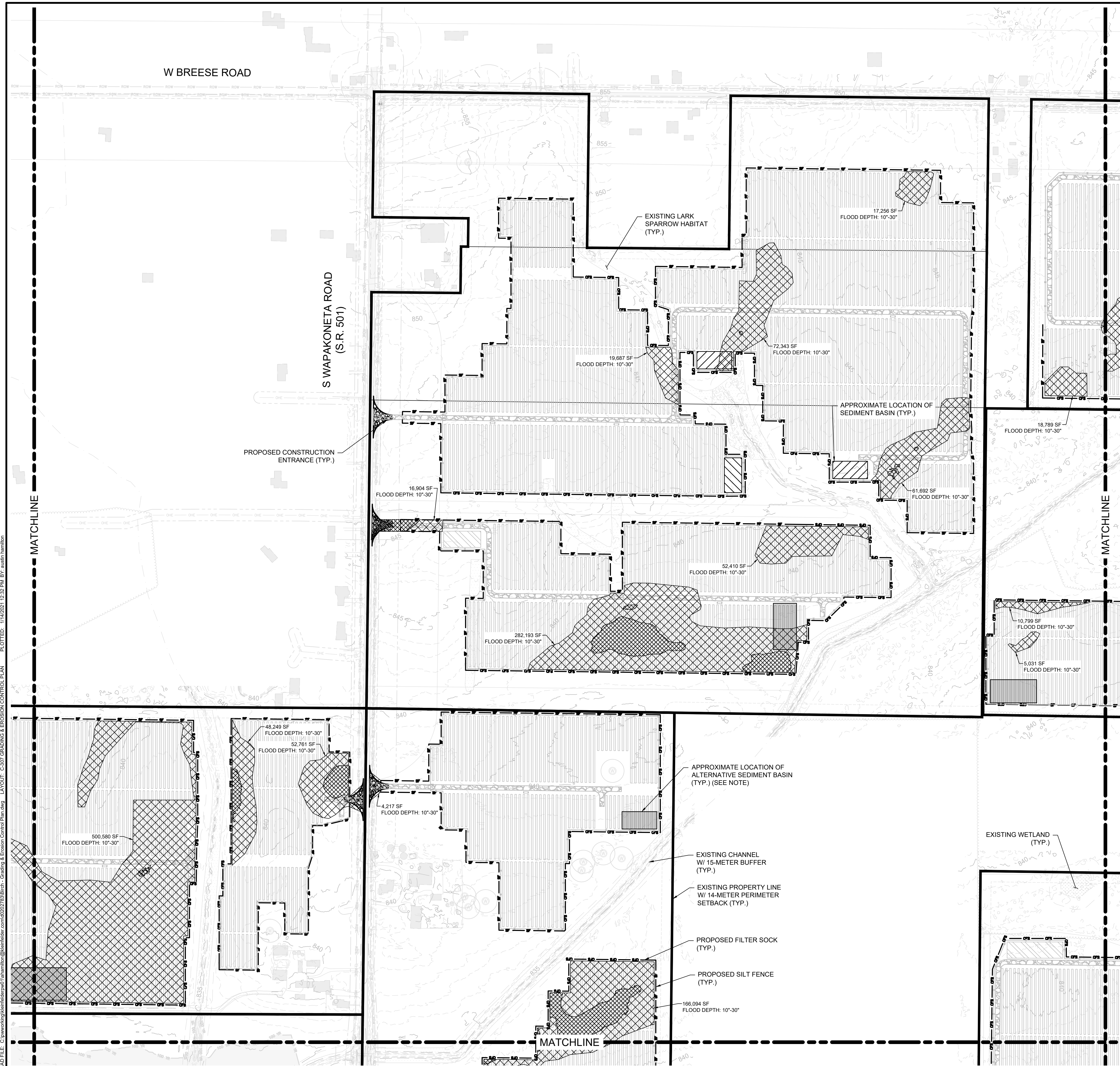
10% CIVIL DESIGN

PROJECT NO. 20212135.001A	C-306
ISSUE DATE 01/14/2021	
CURRENT REVISION A	
DESIGNED BY ARH	
DRAWN BY ARH	
CHECKED BY MDI	
APPROVED BY CGO	SHEET C-306 of 42

## KEY MAP







**ALTERNATIVE SEDIMENT BASIN NOTE:**

**CONCEPT GRADING LEGEND:**

 PROPOSED FILL  
(AREAS OF 18"-30" OF FLOOD DEPTH)

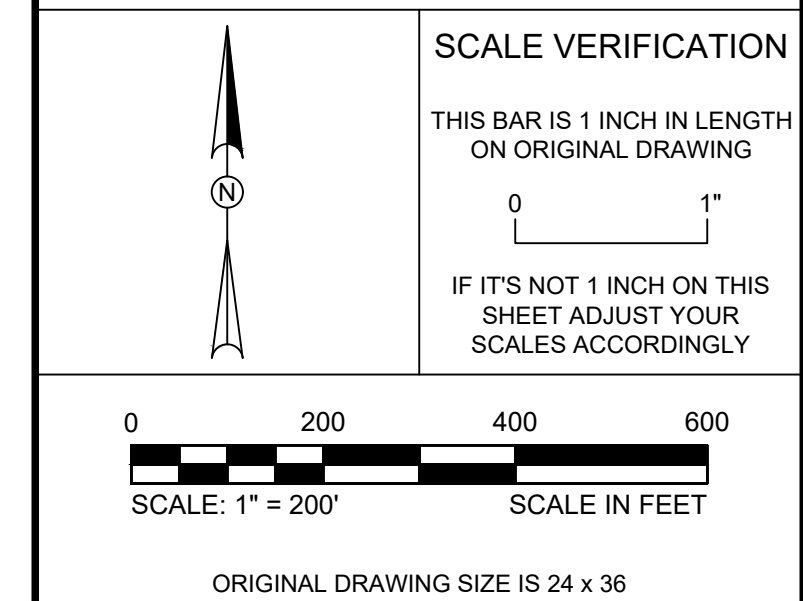


PROPOSED FILL  
(AREAS OF 24"-30" OF FLOOD DEPTH)

\*SEE SHEET C-001 FOR EARTHWORK QUANTITIES AND EARTHWORK NOTES.

[illegible]

**10% DESIGN**  
NOT FOR CONSTRUCTION



## GRADING & EROSION CONTROL PLAN

BIRCH SOLAR PROJECT  
ALLEN COUNTY, OH  
AUGLAIZE COUNTY, OH

lightsourcebp  

LIGHTSOURCE bp  
400 MONTGOMERY ST, 8TH FLOOR  
SAN FRANCISCO, CA 94104

10% CIVIL DESIGN

PROJECT NO. 2012135.001A	C-307
ISSUE DATE 01/14/2021	
CURRENT REVISION A	
DESIGNED BY ARH	
DRAWN BY ARH	
CHECKED BY MDI	
APPROVED BY CGO	SHEET C-307 of 42



**This foregoing document was electronically filed with the Public Utilities**

**Commission of Ohio Docketing Information System on**

**2/17/2021 3:18:21 PM**

**in**

**Case No(s). 20-1605-EL-BGN**

Summary: Notice - Notice - Large Exhibit A, Site Plan (Part 11 of 14) electronically filed by Christine M.T. Pirik on behalf of Birch Solar 1, LLC