

ALTERNATIVE SEDIMENT BASIN NOTE:

- SEE PLANS FOR RECOMMENDED ALTERNATIVE SEDIMENT BASIN LOCATIONS. THESE ARE BEING SHOWN FOR ILLUSTRATION PURPOSES IN AN EFFORT TO NOT IMPACT THE PROVIDED ARRAY LAYOUT CONFIGURATION. THE ITERATIVE NATURE OF THE LAYOUT DESIGN PROCESS WILL OCCUR PRIOR TO FUTURE PLAN SETS. ADDITIONAL CALCULATIONS ARE NEEDED TO CONFIRM SIZING OF COMPOST FILTER SOCK. IF COMPOST FILTER SOCK SIZING IS INADEQUATE, ARRAY LAYOUT MODIFICATIONS MAY BE REQUIRED TO ACCOMMODATE THE ALTERNATIVE SEDIMENT BASIN LOCATIONS FOR COMPLIANCE WITH CHAPTER 5, 6 & 7 OF THE OHIO RAINWATER AND LAND DEVELOPMENT MANUAL.

CONCEPT GRADING LEGEND:

- PROPOSED FILL (AREAS OF 10"-30" OF FLOOD DEPTH)
- PROPOSED FILL (AREAS OF 18"-30" OF FLOOD DEPTH)
- PROPOSED FILL (AREAS OF 24"-30" OF FLOOD DEPTH)

\*SEE SHEET C-001 FOR EARTHWORK QUANTITIES AND EARTHWORK NOTES.

Bright People. Right Solutions.

707 17<sup>TH</sup> STREET, SUITE 3000  
DENVER, CO 80202  
PHONE: 303-237-6801  
WWW.KLEINFELDER.COM

REVISIONS				
REV	DESCRIPTION	DSN DWN	CHK APP	DATE
A	ISSUED FOR REVIEW: 10% CIVIL DESIGN	ARH	MDI	1/14/2021

**10% DESIGN**  
NOT FOR CONSTRUCTION

SCALE VERIFICATION  
THIS BAR IS 1 INCH IN LENGTH  
ON ORIGINAL DRAWING  
0 1"  
IF IT'S NOT 1 INCH ON THIS  
SHEET ADJUST YOUR  
SCALES ACCORDINGLY

0 200 400 600  
SCALE: 1" = 200'  
SCALE IN FEET  
ORIGINAL DRAWING SIZE IS 24 x 36

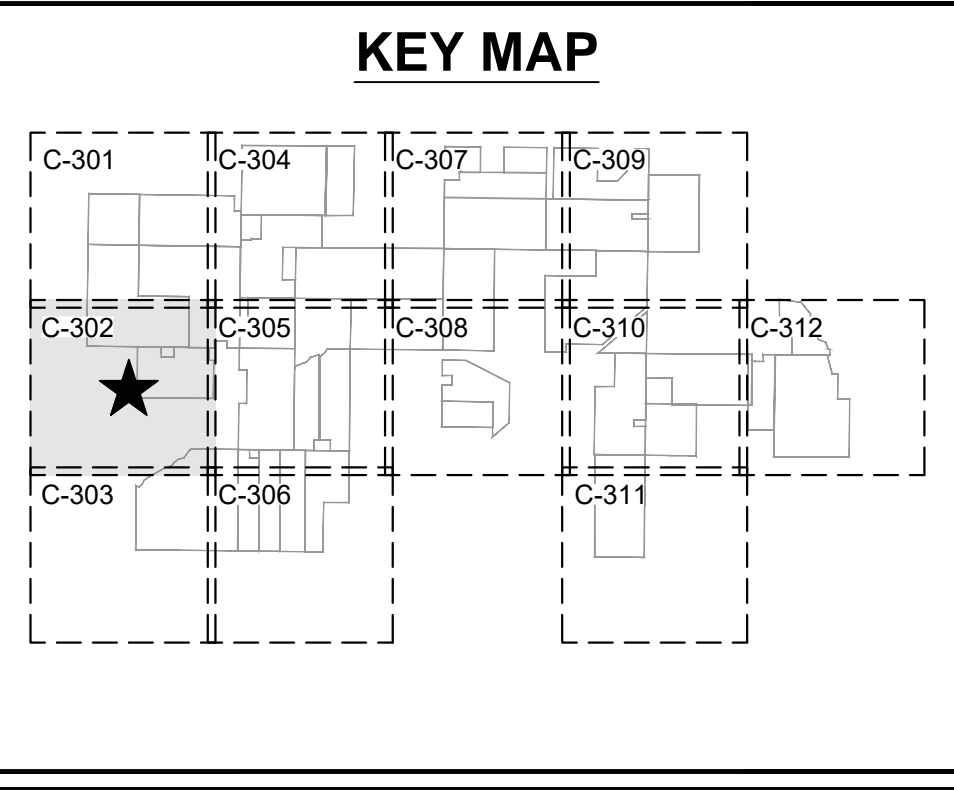
**GRADING & EROSION CONTROL PLAN**

BIRCH SOLAR PROJECT  
ALLEN COUNTY, OH  
AUGLAIZE COUNTY, OH

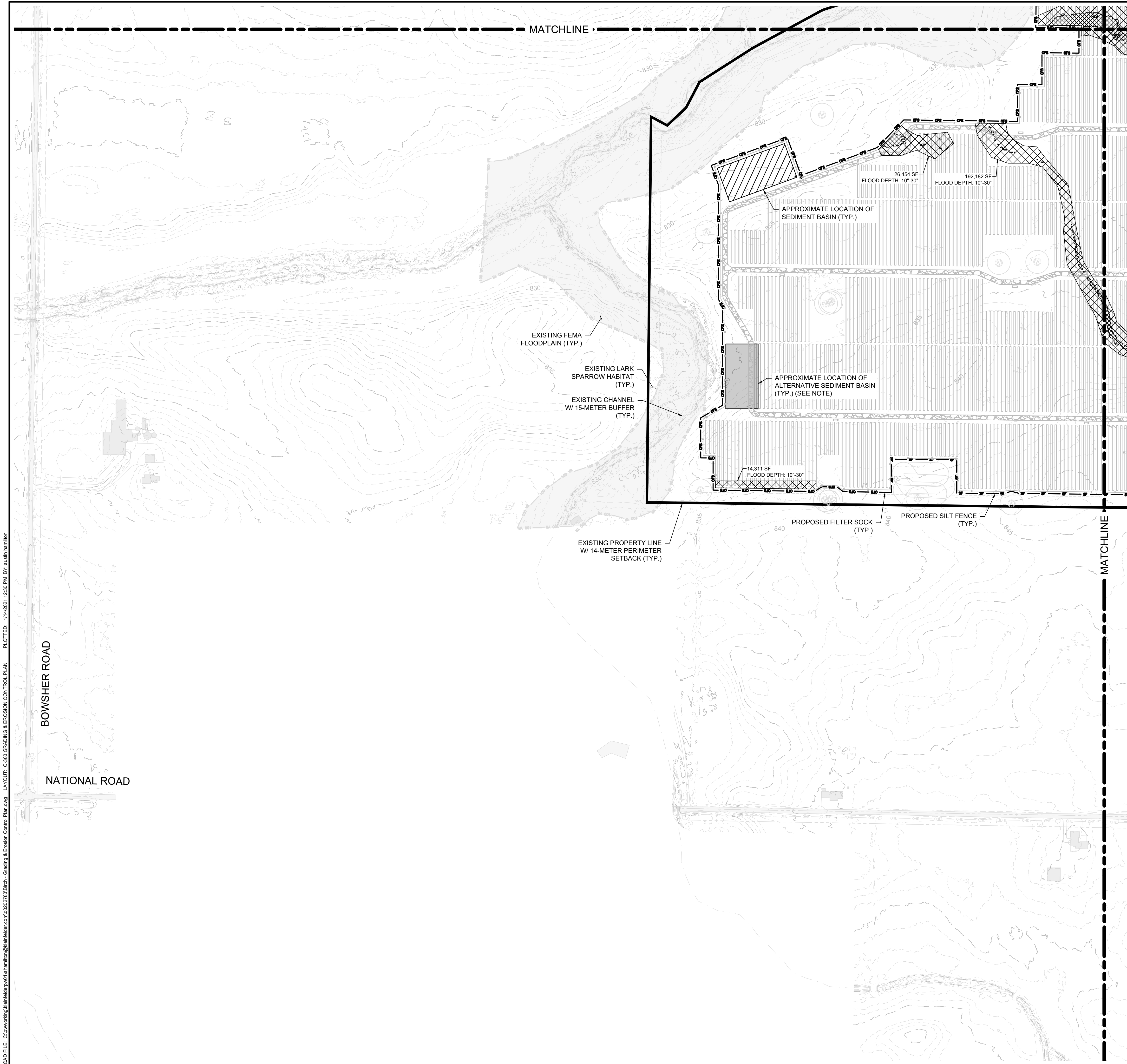
LIGHTSOURCE bp  
400 MONTGOMERY ST, 8TH FLOOR  
SAN FRANCISCO, CA 94104

10% CIVIL DESIGN	
PROJECT NO. 20212135.001A	<b>C-302</b>
ISSUE DATE 01/14/2021	
CURRENT REVISION A	
DESIGNED BY ARH	
DRAWN BY ARH	
CHECKED BY MDI	
APPROVED BY CGO	

SHEET C-302 of 42







ALTERNATIVE SEDIMENT BASIN NOTE:

1. SEE PLANS FOR RECOMMENDED ALTERNATIVE SEDIMENT BASIN LOCATIONS. THESE ARE BEING SHOWN FOR ILLUSTRATION PURPOSES IN AN EFFORT TO NOT IMPACT THE PROVIDED ARRAY LAYOUT CONFIGURATION. THE ITERATIVE NATURE OF THE LAYOUT DESIGN PROCESS WILL OCCUR PRIOR TO FUTURE PLAN SETS. ADDITIONAL CALCULATIONS ARE NEEDED TO CONFIRM SIZING OF COMPOST FILTER SOCK. IF COMPOST FILTER SOCK SIZING IS INADEQUATE, ARRAY LAYOUT MODIFICATIONS MAY BE REQUIRED TO ACCOMMODATE THE ALTERNATIVE SEDIMENT BASIN LOCATIONS FOR COMPLIANCE WITH CHAPTER 5, 6 & 7 OF THE OHIO RAINWATER AND LAND DEVELOPMENT MANUAL.

CONCEPT GRADING LEGEND:

- PROPOSED FILL (AREAS OF 10"-30" OF FLOOD DEPTH)
- PROPOSED FILL (AREAS OF 18"-30" OF FLOOD DEPTH)
- PROPOSED FILL (AREAS OF 24"-30" OF FLOOD DEPTH)

\*SEE SHEET C-001 FOR EARTHWORK QUANTITIES AND EARTHWORK NOTES.

707 17<sup>TH</sup> STREET, SUITE 3000  
DENVER, CO 80202  
PHONE: 303-237-6601  
WWW.KLEINFELDER.COM

REVISIONS				
REV	DESCRIPTION	DSN DWN	CHK APP	DATE
A	ISSUED FOR REVIEW: 10% CIVIL DESIGN	ARH	MDI	1/14/2021

**10% DESIGN**  
NOT FOR CONSTRUCTION

SCALE VERIFICATION  
THIS BAR IS 1 INCH IN LENGTH  
ON ORIGINAL DRAWING  
0 1"  
IF IT'S NOT 1 INCH ON THIS  
SHEET ADJUST YOUR  
SCALES ACCORDINGLY

0 200 400 600  
SCALE: 1" = 200'  
SCALE IN FEET  
ORIGINAL DRAWING SIZE IS 24 x 36

GRADING & EROSION CONTROL PLAN

BIRCH SOLAR PROJECT  
ALLEN COUNTY, OH  
AUGLAIZE COUNTY, OH

LIGHTSOURCE bp  
400 MONTGOMERY ST, 8TH FLOOR  
SAN FRANCISCO, CA 94104

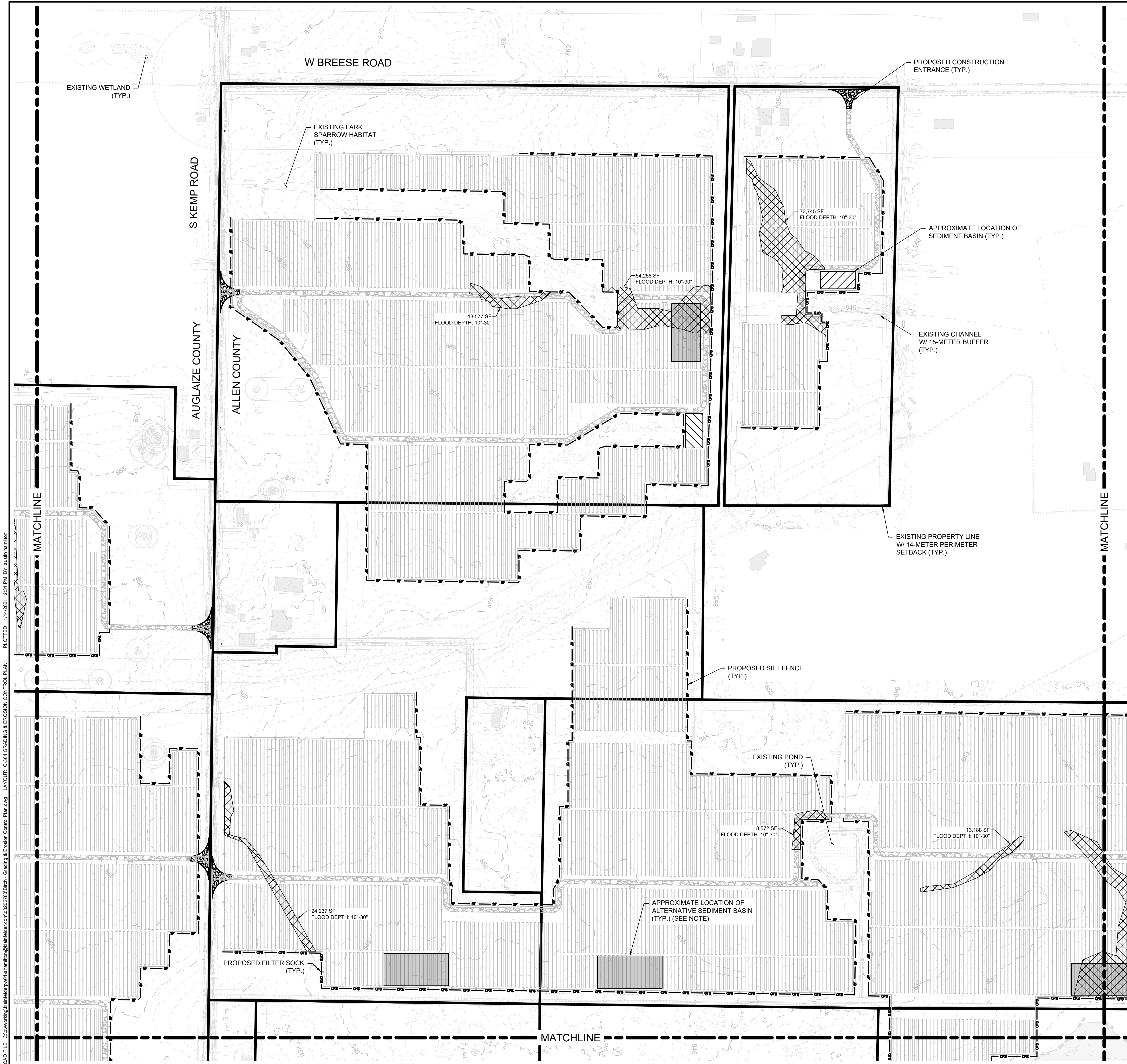
10% CIVIL DESIGN

PROJECT NO. 20212135.001A	<b>C-303</b>
ISSUE DATE 01/14/2021	
CURRENT REVISION A	
DESIGNED BY ARH	
DRAWN BY ARH	
CHECKED BY MDI	
APPROVED BY CGO	

SHEET C-303 of 42

CAD FILE: C:\working\kleinfelder\p01\ahamilton\kleinfelder.com\02212135\Birt - Grading & Erosion Control Plan.dwg PLOTTED: 1/14/2021 12:30 PM BY: audin.hamilton





ALTERNATIVE SEDIMENT BASIN NOTE:

- SEE PLANS FOR RECOMMENDED ALTERNATIVE SEDIMENT BASIN LOCATIONS. THESE ARE BEING SHOWN FOR ILLUSTRATION PURPOSES IN AN EFFORT TO NOT IMPACT THE PROVIDED ARRAY LAYOUT CONFIGURATION. THE ITERATIVE NATURE OF THE LAYOUT DESIGN PROCESS WILL OCCUR PRIOR TO FUTURE PLAN SETS. ADDITIONAL CALCULATIONS ARE NEEDED TO CONFIRM SIZING OF COMPOST FILTER SOCK. IF COMPOST FILTER SOCK SIZING IS INADEQUATE, ARRAY LAYOUT MODIFICATIONS MAY BE REQUIRED TO ACCOMMODATE THE ALTERNATIVE SEDIMENT BASIN LOCATIONS FOR COMPLIANCE WITH CHAPTER 5, 6 & 7 OF THE OHIO RAINWATER AND LAND DEVELOPMENT MANUAL.

CONCEPT GRADING LEGEND:

- PROPOSED FILL (AREAS OF 10"-30" OF FLOOD DEPTH)
- PROPOSED FILL (AREAS OF 18"-30" OF FLOOD DEPTH)
- PROPOSED FILL (AREAS OF 24"-30" OF FLOOD DEPTH)

\*SEE SHEET C-001 FOR EARTHWORK QUANTITIES AND EARTHWORK NOTES.

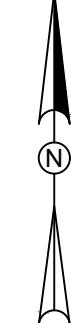


**KLEINFELDER**  
Bright People. Right Solutions.


707 17<sup>TH</sup> STREET, SUITE 3000  
DENVER, CO 80202  
PHONE: 303-237-6801  
WWW.KLEINFELDER.COM

REVISIONS				
REV	DESCRIPTION	DSN DWN	CHK APP	DATE
A	ISSUED FOR REVIEW: 10% CIVIL DESIGN	ARH ARH	MDI CGO	1/14/2021

10% DESIGN  
NOT FOR CONSTRUCTION



SCALE VERIFICATION  
THIS BAR IS 1 INCH IN LENGTH  
ON ORIGINAL DRAWING



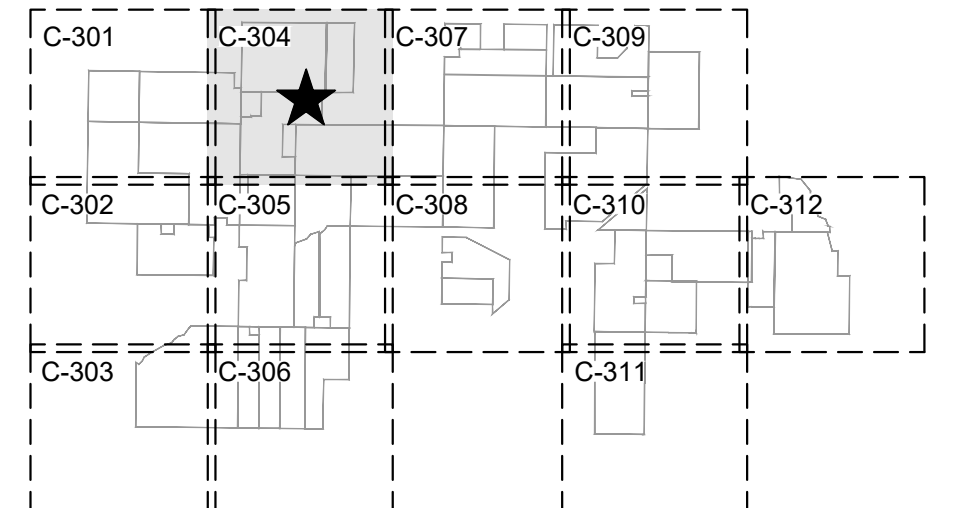
0 200 400 600  
SCALE: 1" = 200'  
SCALE IN FEET

ORIGINAL DRAWING SIZE IS 24 x 36

GRADING & EROSION CONTROL PLAN

BIRCH SOLAR PROJECT  
ALLEN COUNTY, OH  
AUGLAIZE COUNTY, OH

KEY MAP



PROJECT NO.	20212135.001A
ISSUE DATE	01/14/2021
CURRENT REVISION	A
DESIGNED BY	ARH
DRAWN BY	ARH
CHECKED BY	MDI
APPROVED BY	CGO

C-304

SHEET C-304 of 42



**This foregoing document was electronically filed with the Public Utilities**

**Commission of Ohio Docketing Information System on**

**2/17/2021 3:16:42 PM**

**in**

**Case No(s). 20-1605-EL-BGN**

Summary: Notice - Notice - Large Exhibit A, Site Plan (Part 10 of 14) electronically filed by Christine M.T. Pirik on behalf of Birch Solar 1, LLC