

# Clearview Solar I, LLC

## Clearview Solar

### Exhibit M

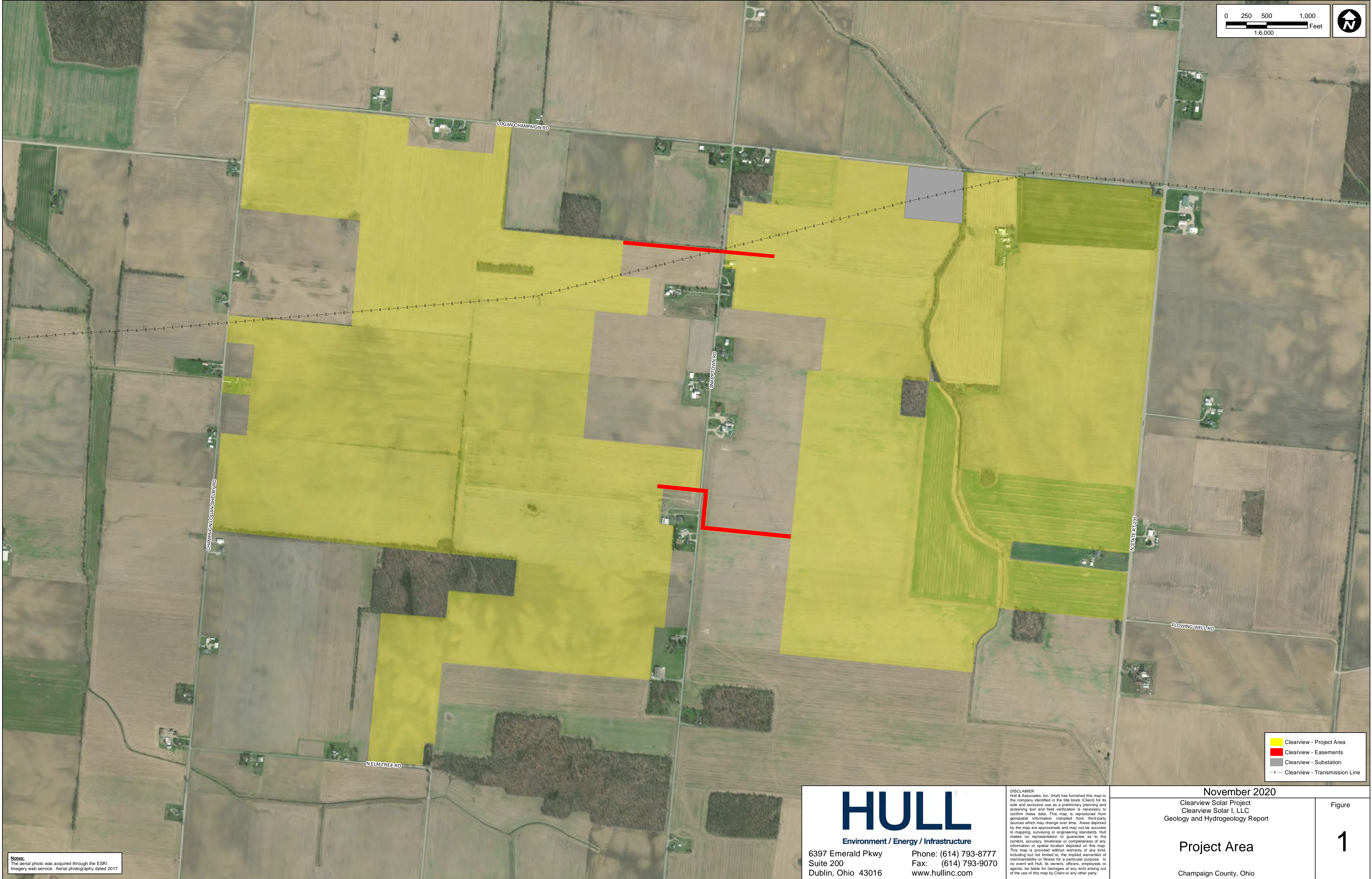
### Part 2 of 3

## Geology and Hydrogeology Report

### Figures

**Case No. 20-1362-EL-BGN**

## **FIGURES**



**Notes:**  
The aerial photo was acquired through the ESRI Imagery web service. Aerial photography dated 2017.

**HULL**  
Environment / Energy / Infrastructure

6397 Emerald Pkwy  
Suite 200  
Dublin, Ohio 43016

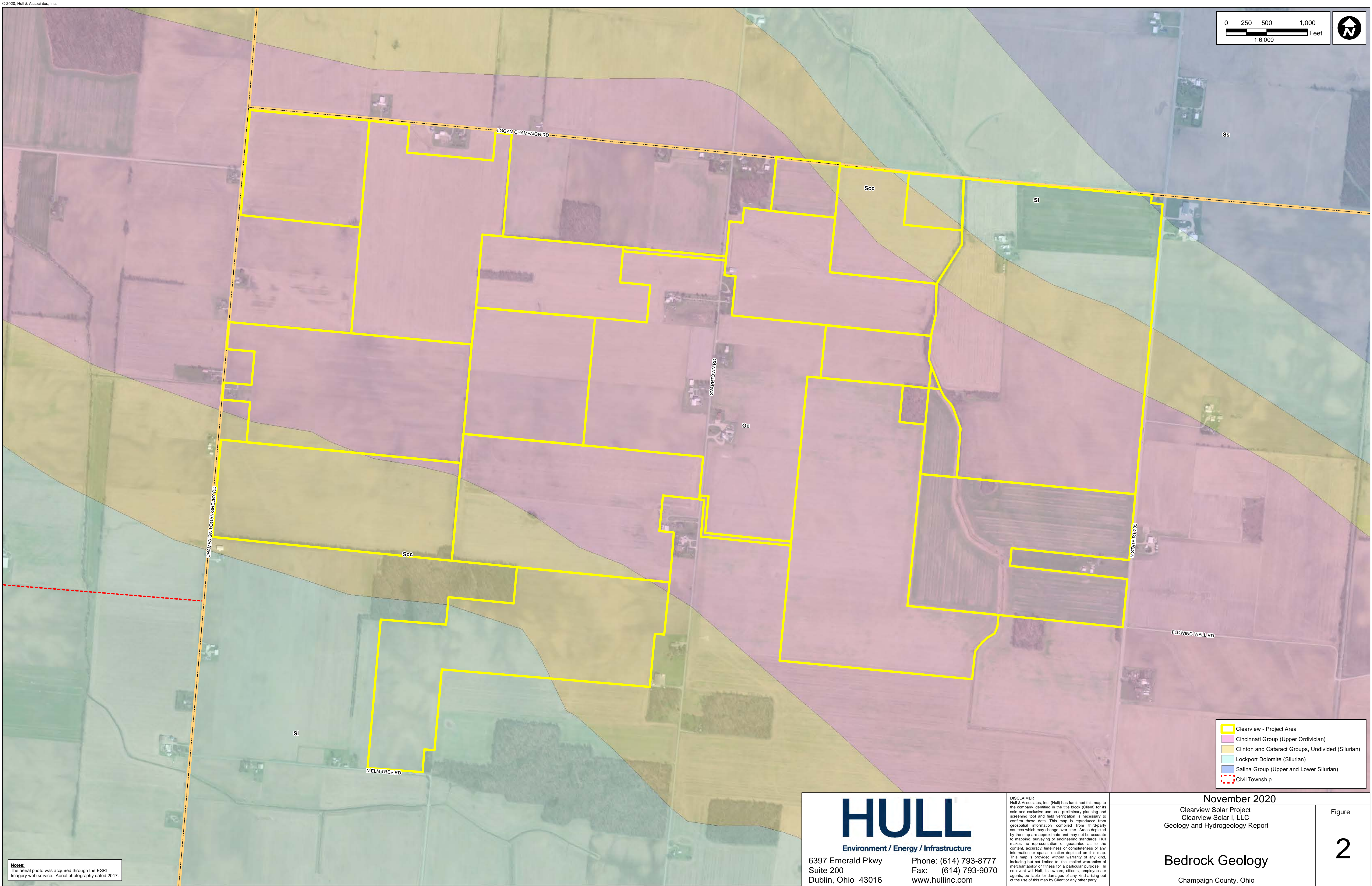
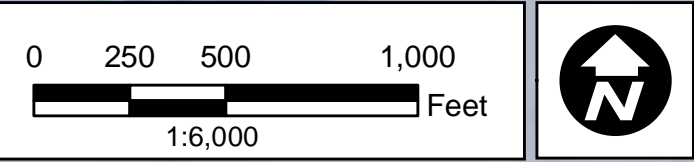
Phone: (614) 793-8777  
Fax: (614) 793-9070  
www.hullinc.com

DISCLAIMER  
Hull & Associates, Inc. (Hull) has furnished this map to the company identified in the title block (Client) for its sole and exclusive use as a preliminary planning and screening tool and field verification is necessary to confirm these data. This map is reproduced from geospatial information compiled from third-party sources which may change over time. Areas depicted by the map are approximate and may not be accurate to mapping, surveying or engineering standards. Hull makes no representation or guarantee as to the content, accuracy, timeliness or completeness of any information or spatial location depicted on this map. This map is provided without warranty of any kind, including but not limited to, the implied warranties of merchantability or fitness for a particular purpose. In no event will Hull, its owners, officers, employees or agents, be liable for damages of any kind arising out of the use of this map by Client or any other party.

November 2020  
Clearview Solar Project  
Clearview Solar I, LLC  
Geology and Hydrogeology Report

Project Area  
  
Champaign County, Ohio

Figure  
  
**1**



**Notes:**  
The aerial photo was acquired through the ESRI Imagery web service. Aerial photography dated 2017.

# HULL

Environment / Energy / Infrastructure

6397 Emerald Pkwy  
Suite 200  
Dublin, Ohio 43016

Phone: (614) 793-8777  
Fax: (614) 793-9070  
www.hullinc.com

DISCLAIMER  
Hull & Associates, Inc. (Hull) has furnished this map to the company identified in the title block (Client) for its sole and exclusive use as a preliminary planning and screening tool and field verification is necessary to confirm these data. This map is reproduced from geospatial information compiled from third-party sources which may change over time. Areas depicted by the map are approximate and may not be accurate to mapping, surveying or engineering standards. Hull makes no representation or guarantee as to the content, accuracy, timeliness or completeness of any information or spatial location depicted on this map. This map is provided without warranty of any kind, including but not limited to, the implied warranties of merchantability or fitness for a particular purpose. In no event will Hull, its owners, officers, employees or agents, be liable for damages of any kind arising out of the use of this map by Client or any other party.

November 2020

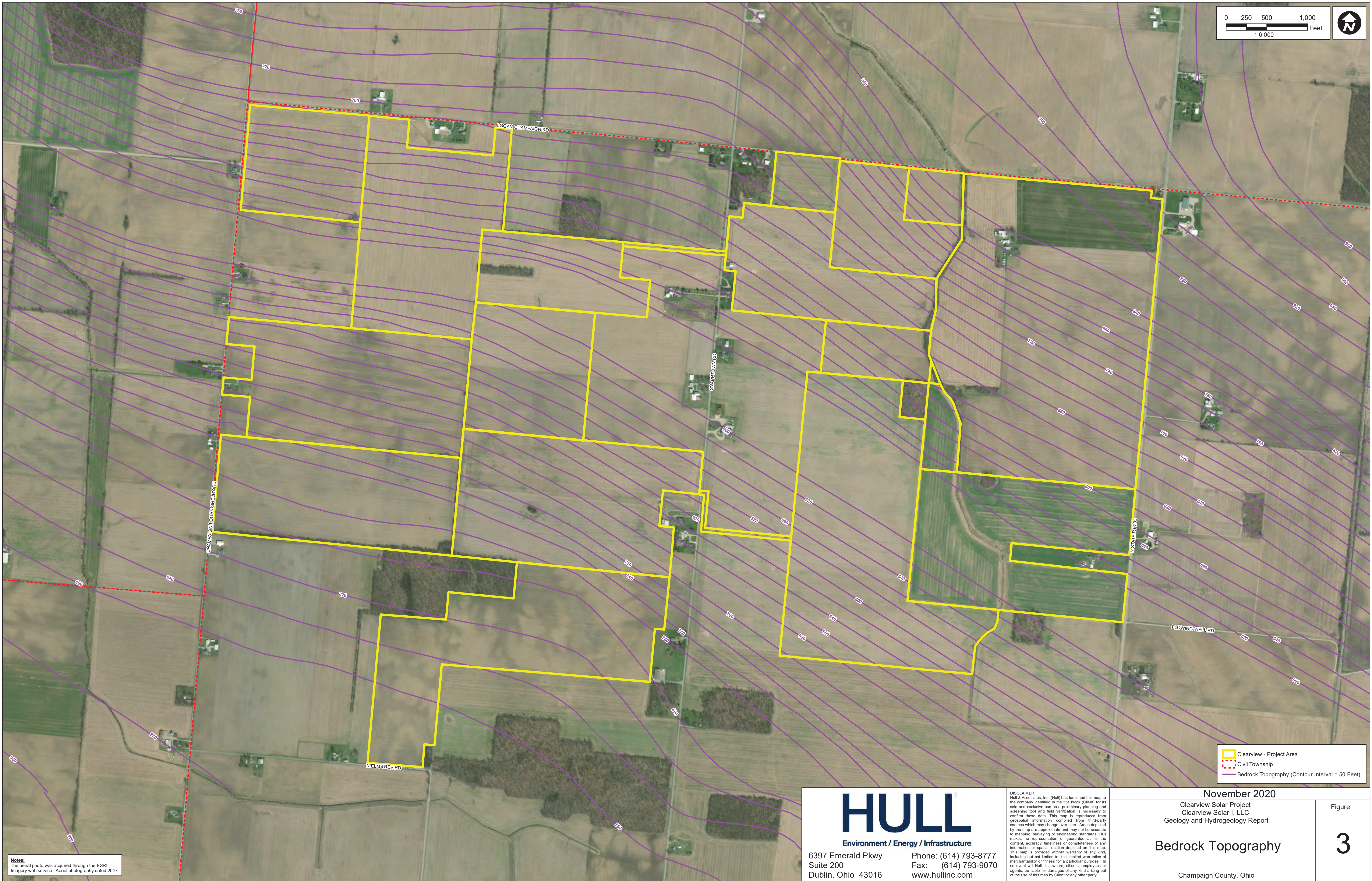
Clearview Solar Project  
Clearview Solar I, LLC  
Geology and Hydrogeology Report

**Bedrock Geology**

Champaign County, Ohio

Figure

**2**



**Notes:**  
The aerial photo was acquired through the ESRI Imagery web service. Aerial photography dated 2017.

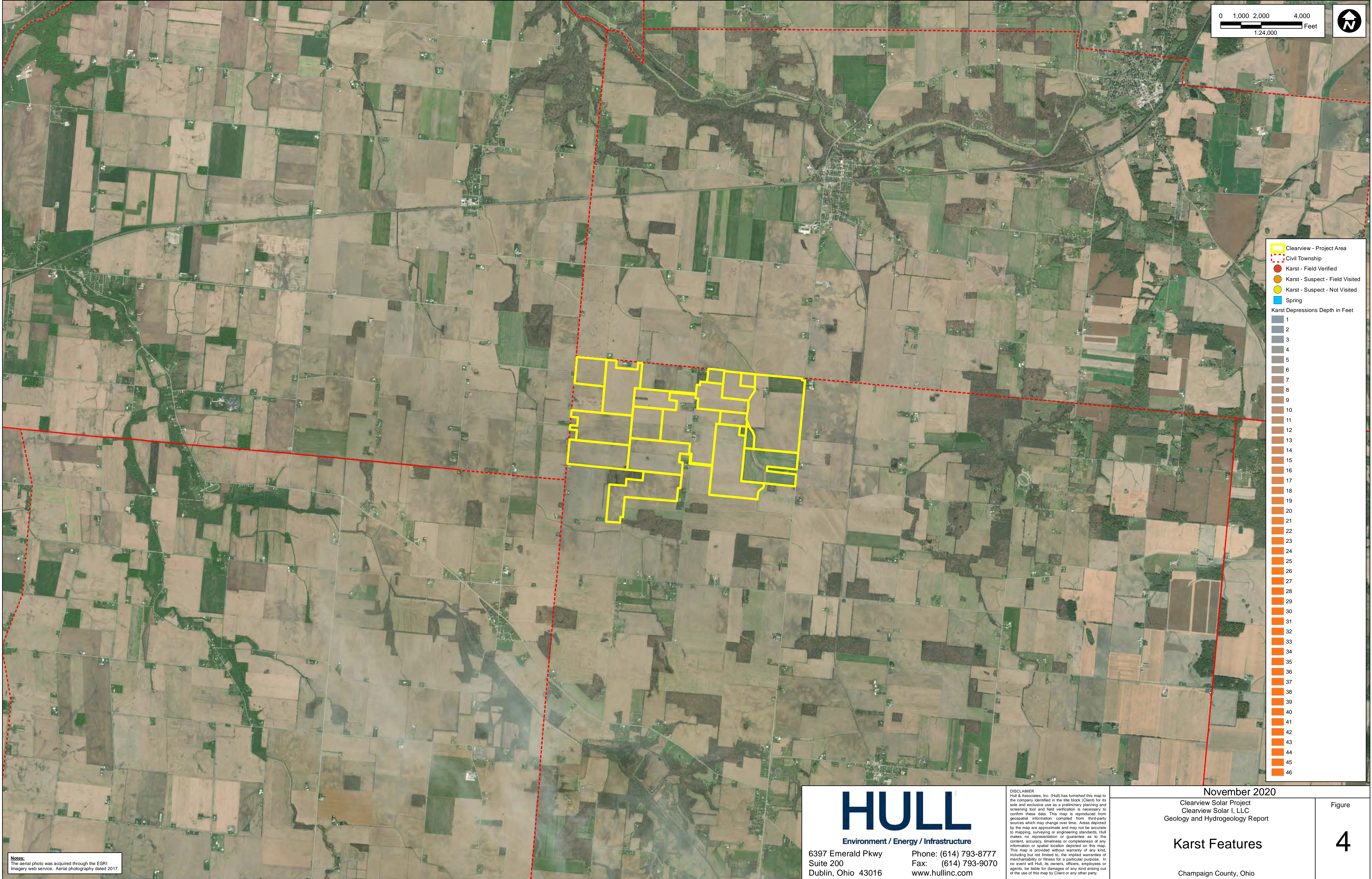
**HULL**  
Environment / Energy / Infrastructure

6397 Emerald Pkwy  
Suite 200  
Dublin, Ohio 43016

Phone: (614) 793-8777  
Fax: (614) 793-9070  
www.hullinc.com

DISCLAIMER  
Hull & Associates, Inc. (Hull) has furnished this map to the company identified in the title block (Client) for its sole and exclusive use as a preliminary planning and screening tool and field verification is necessary to confirm these data. This map is reproduced from geospatial information compiled from third-party sources which may change over time. Areas depicted by the map are approximate and may not be accurate to mapping, surveying or engineering standards. Hull makes no representation or guarantee as to the content, accuracy, timeliness or completeness of any information or spatial location depicted on this map. This map is provided without warranty of any kind, including but not limited to, the implied warranties of merchantability or fitness for a particular purpose. In no event will Hull, its owners, officers, employees or agents, be liable for damages of any kind arising out of the use of this map by Client or any other party.

November 2020 Clearview Solar Project Clearview Solar I, LLC Geology and Hydrogeology Report		Figure
Bedrock Topography		3
Champaign County, Ohio		
File Name: ORR023_03_Fig03_BedrockTopo.mxd		Edited: 11/17/2020 By: rkaij



0 1,000 2,000 4,000  
Feet  
1:24,000



- Clearview - Project Area
  - Civil Township
  - Karst - Field Verified
  - Karst - Suspect - Field Visited
  - Karst - Suspect - Not Visited
  - Spring
- Karst Depressions Depth in Feet
- 1
  - 2
  - 3
  - 4
  - 5
  - 6
  - 7
  - 8
  - 9
  - 10
  - 11
  - 12
  - 13
  - 14
  - 15
  - 16
  - 17
  - 18
  - 19
  - 20
  - 21
  - 22
  - 23
  - 24
  - 25
  - 26
  - 27
  - 28
  - 29
  - 30
  - 31
  - 32
  - 33
  - 34
  - 35
  - 36
  - 37
  - 38
  - 39
  - 40
  - 41
  - 42
  - 43
  - 44
  - 45
  - 46

**Notes:**  
The aerial photo was acquired through the ESRI Imagery web service. Aerial photography dated 2017.

# HULL

Environment / Energy / Infrastructure

6397 Emerald Pkwy  
Suite 200  
Dublin, Ohio 43016

Phone: (614) 793-8777  
Fax: (614) 793-9070  
www.hullinc.com

DISCLAIMER  
Hull & Associates, Inc. (Hull) has furnished this map to the company identified in the title block (Client) for its sole and exclusive use as a preliminary planning and screening tool and field verification is necessary to confirm these data. This map is reproduced from geospatial information compiled from third-party sources which may change over time. Areas depicted by the map are approximate and may not be accurate to mapping, surveying or engineering standards. Hull makes no representation or guarantee as to the content, accuracy, timeliness or completeness of any information or spatial location depicted on this map. This map is provided without warranty of any kind, including but not limited to, the implied warranties of merchantability or fitness for a particular purpose. In no event will Hull, its owners, officers, employees or agents, be liable for damages of any kind arising out of the use of this map by Client or any other party.

November 2020

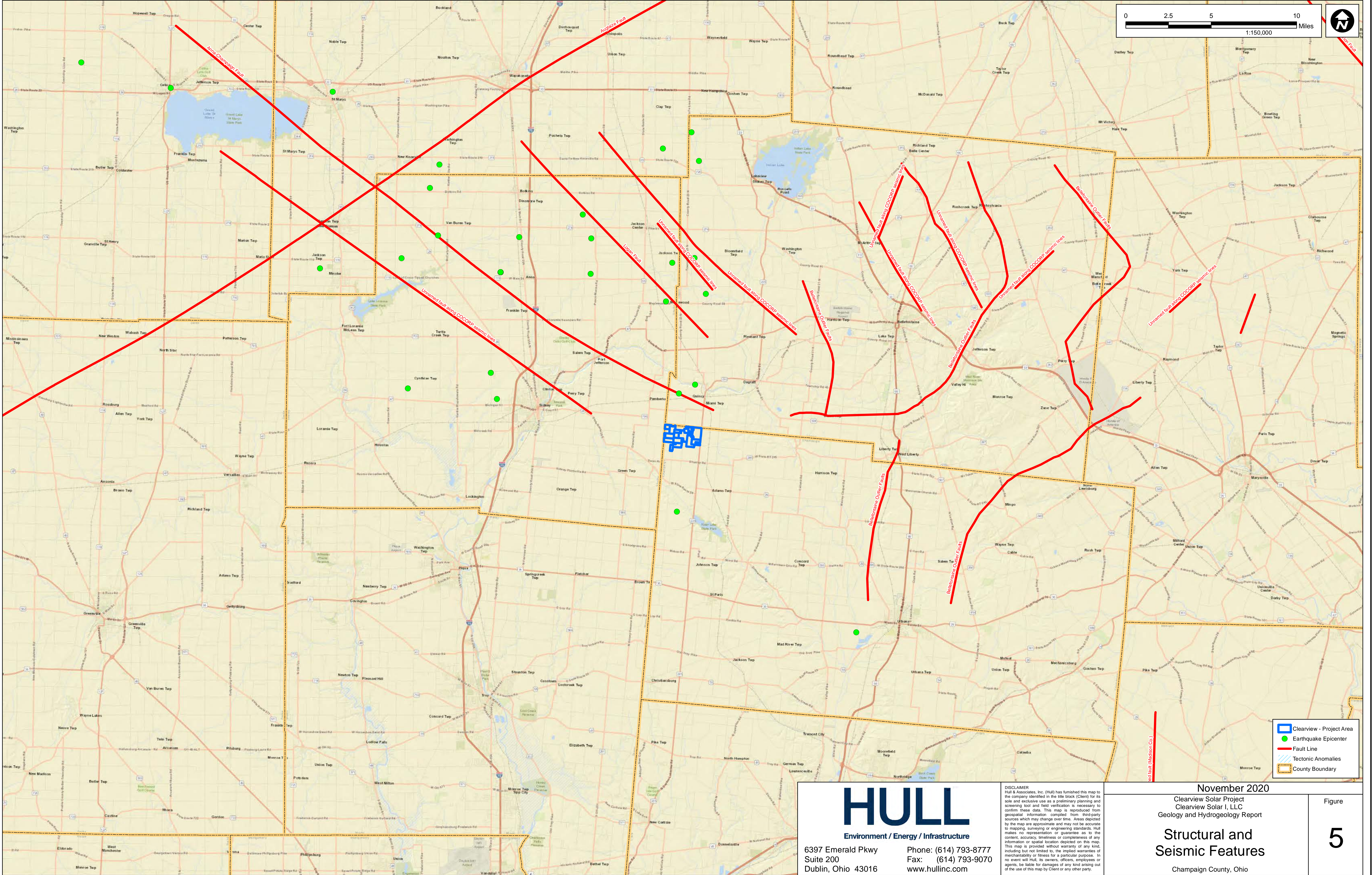
Clearview Solar Project  
Clearview Solar I, LLC  
Geology and Hydrogeology Report

Karst Features

Champaign County, Ohio

Figure

4



**HULL**  
Environment / Energy / Infrastructure

6397 Emerald Pkwy  
Suite 200  
Dublin, Ohio 43016

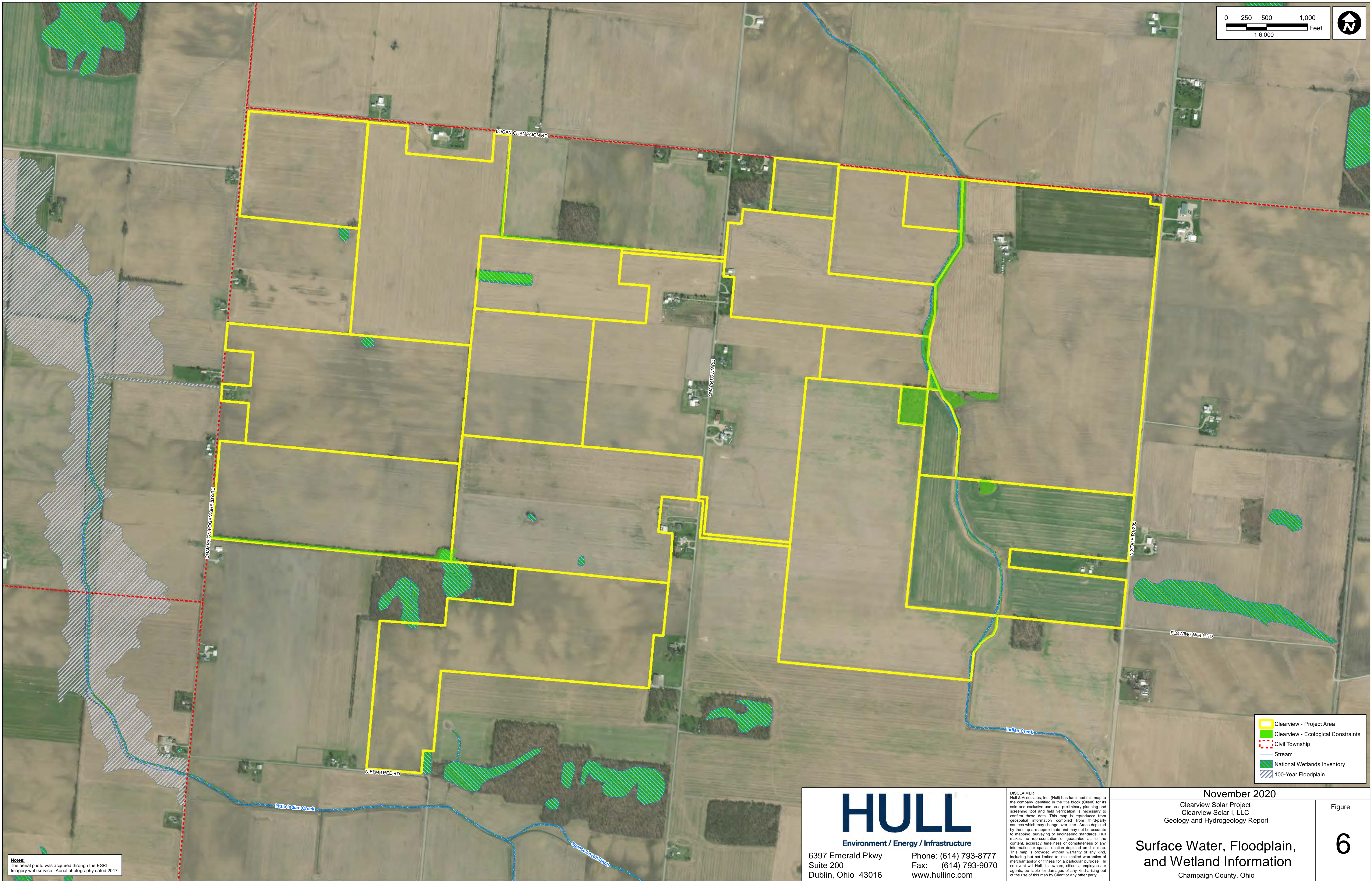
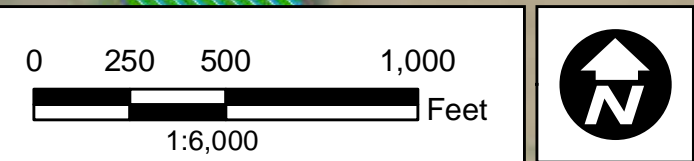
Phone: (614) 793-8777  
Fax: (614) 793-9070  
www.hullinc.com

DISCLAIMER  
Hull & Associates, Inc. (Hull) has furnished this map to the company identified in the title block (Client) for its sole and exclusive use as a preliminary planning and screening tool and field verification is necessary to confirm these data. This map is reproduced from geospatial information compiled from third-party sources which may change over time. Areas depicted by the map are approximate and may not be accurate to mapping, surveying or engineering standards. Hull makes no representation or guarantee as to the content, accuracy, timeliness or completeness of any information or spatial location depicted on this map. This map is provided without warranty of any kind, including but not limited to, the implied warranties of merchantability or fitness for a particular purpose. In no event will Hull, its owners, officers, employees or agents, be liable for damages of any kind arising out of the use of this map by Client or any other party.

November 2020  
Clearview Solar Project  
Clearview Solar I, LLC  
Geology and Hydrogeology Report  
  
**Structural and  
Seismic Features**  
  
Champaign County, Ohio

Figure

**5**



**Notes:**  
The aerial photo was acquired through the ESRI Imagery web service. Aerial photography dated 2017.

**HULL**  
Environment / Energy / Infrastructure  
6397 Emerald Pkwy  
Suite 200  
Dublin, Ohio 43016

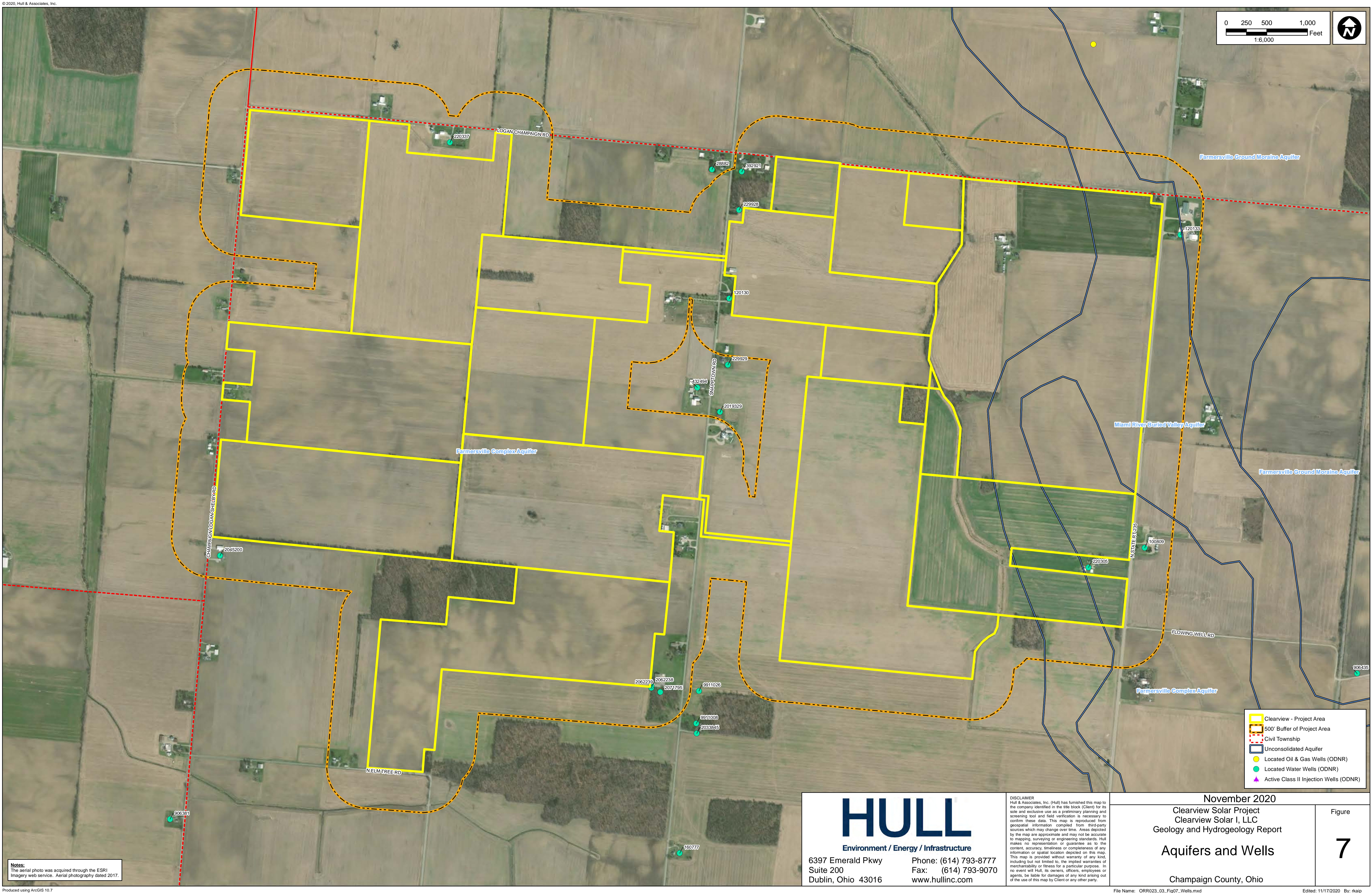
Phone: (614) 793-8777  
Fax: (614) 793-9070  
www.hullinc.com

DISCLAIMER  
Hull & Associates, Inc. (Hull) has furnished this map to the company identified in the title block (Client) for its sole and exclusive use as a preliminary planning and screening tool and field verification is necessary to confirm these data. This map is reproduced from geospatial information compiled from third-party sources which may change over time. Areas depicted by the map are approximate and may not be accurate to mapping, surveying or engineering standards. Hull makes no representation or guarantee as to the content, accuracy, timeliness or completeness of any information or spatial location depicted on this map. This map is provided without warranty of any kind, including but not limited to, the implied warranties of merchantability or fitness for a particular purpose. In no event will Hull, its owners, officers, employees or agents, be liable for damages of any kind arising out of the use of this map by Client or any other party.

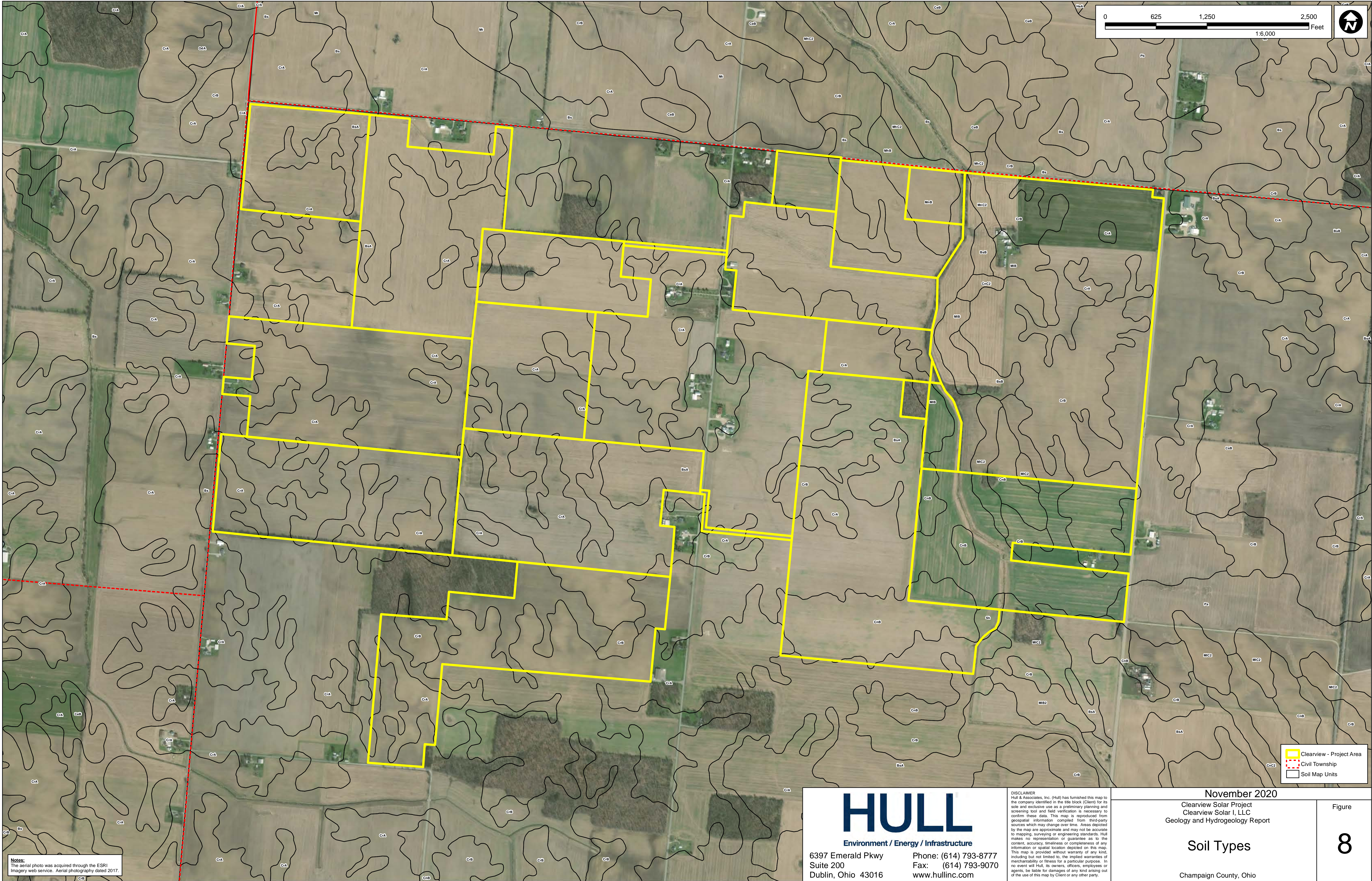
November 2020  
Clearview Solar Project  
Clearview Solar I, LLC  
Geology and Hydrogeology Report

Surface Water, Floodplain,  
and Wetland Information  
Champaign County, Ohio

Figure  
**6**



Notes:  
The aerial photo was acquired through the ESRI Imagery web service. Aerial photography dated 2017.



**Notes:**  
The aerial photo was acquired through the ESRI Imagery web service. Aerial photography dated 2017.

**HULL**  
Environment / Energy / Infrastructure

6397 Emerald Pkwy  
Suite 200  
Dublin, Ohio 43016  
Phone: (614) 793-8777  
Fax: (614) 793-9070  
www.hullinc.com

DISCLAIMER  
Hull & Associates, Inc. (Hull) has furnished this map to the company identified in the title block (Client) for its sole and exclusive use as a preliminary planning and screening tool and field verification is necessary to confirm these data. This map is reproduced from geospatial information compiled from third-party sources which may change over time. Areas depicted by the map are approximate and may not be accurate to mapping, surveying or engineering standards. Hull makes no representation or guarantee as to the content, accuracy, timeliness or completeness of any information or spatial location depicted on this map. This map is provided without warranty of any kind, including but not limited to, the implied warranties of merchantability or fitness for a particular purpose. In no event will Hull, its owners, officers, employees or agents, be liable for damages of any kind arising out of the use of this map by Client or any other party.

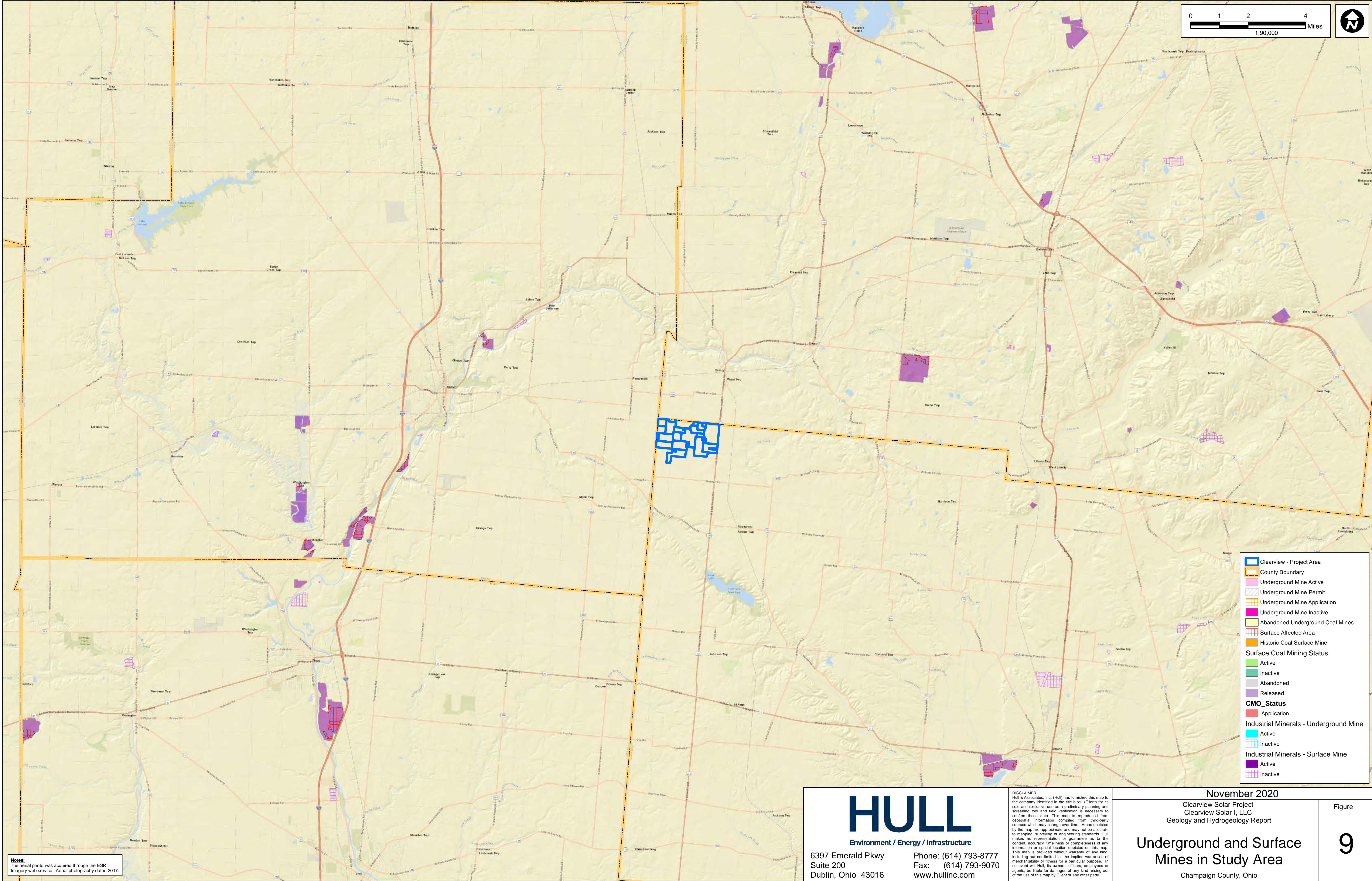
November 2020  
Clearview Solar Project  
Clearview Solar I, LLC  
Geology and Hydrogeology Report

**Soil Types**

Champaign County, Ohio

Figure

**8**



**Notes:**  
The aerial photo was acquired through the ESRI Imagery web service. Aerial photography dated 2017.

**HULL**  
Environment / Energy / Infrastructure

6397 Emerald Pkwy  
Suite 200  
Dublin, Ohio 43016

Phone: (614) 793-8777  
Fax: (614) 793-9070  
www.hullinc.com

**DISCLAIMER**  
Hull & Associates, Inc. (Hull) has furnished this map to the company identified in the title block (Client) for its sole and exclusive use as a preliminary planning and screening tool and field verification is necessary to confirm these data. This map is reproduced from geospatial information compiled from third-party sources which may change over time. Areas depicted by the map are approximate and may not be accurate to mapping, surveying or engineering standards. Hull makes no representation or guarantee as to the content, accuracy, timeliness or completeness of any information or spatial location depicted on this map. This map is provided without warranty of any kind, including but not limited to, the implied warranties of merchantability or fitness for a particular purpose. In no event will Hull, its owners, officers, employees or agents, be liable for damages of any kind arising out of the use of this map by Client or any other party.

November 2020  
Clearview Solar Project  
Clearview Solar I, LLC  
Geology and Hydrogeology Report

**Underground and Surface  
Mines in Study Area**  
Champaign County, Ohio

Figure  
**9**

**This foregoing document was electronically filed with the Public Utilities**

**Commission of Ohio Docketing Information System on**

**12/17/2020 6:11:09 PM**

**in**

**Case No(s). 20-1362-EL-BGN**

Summary: Application - Part 16 of 31 Ex. M (2 of 3) Geology and Hydrogeology Report  
electronically filed by Christine M.T. Pirik on behalf of Clearview Solar I, LLC