



Ross County Solar

Exhibit H

Tree and Shrub Clearing Plan

Case No. 20-1380-EL-BGN

1. Introduction

Ross County Solar, LLC (Ross County Solar) proposes to construct an up to 120 MW solar array (the Facility) in Ross County, Ohio. Ross County Solar has developed this Tree and Shrub Clearing Plan to ensure the protection of core woodlots and for the efficient clearing and disposal of woody vegetation across the site.

2. Tree Preservation Areas

Ross County Solar has identified core woodlots that will be preserved for the life of the Facility. These Tree Preservation Areas are identified in the attached map and consist of approximately 179 acres within the Facility boundary.

3. Tree Clearing and Grubbing

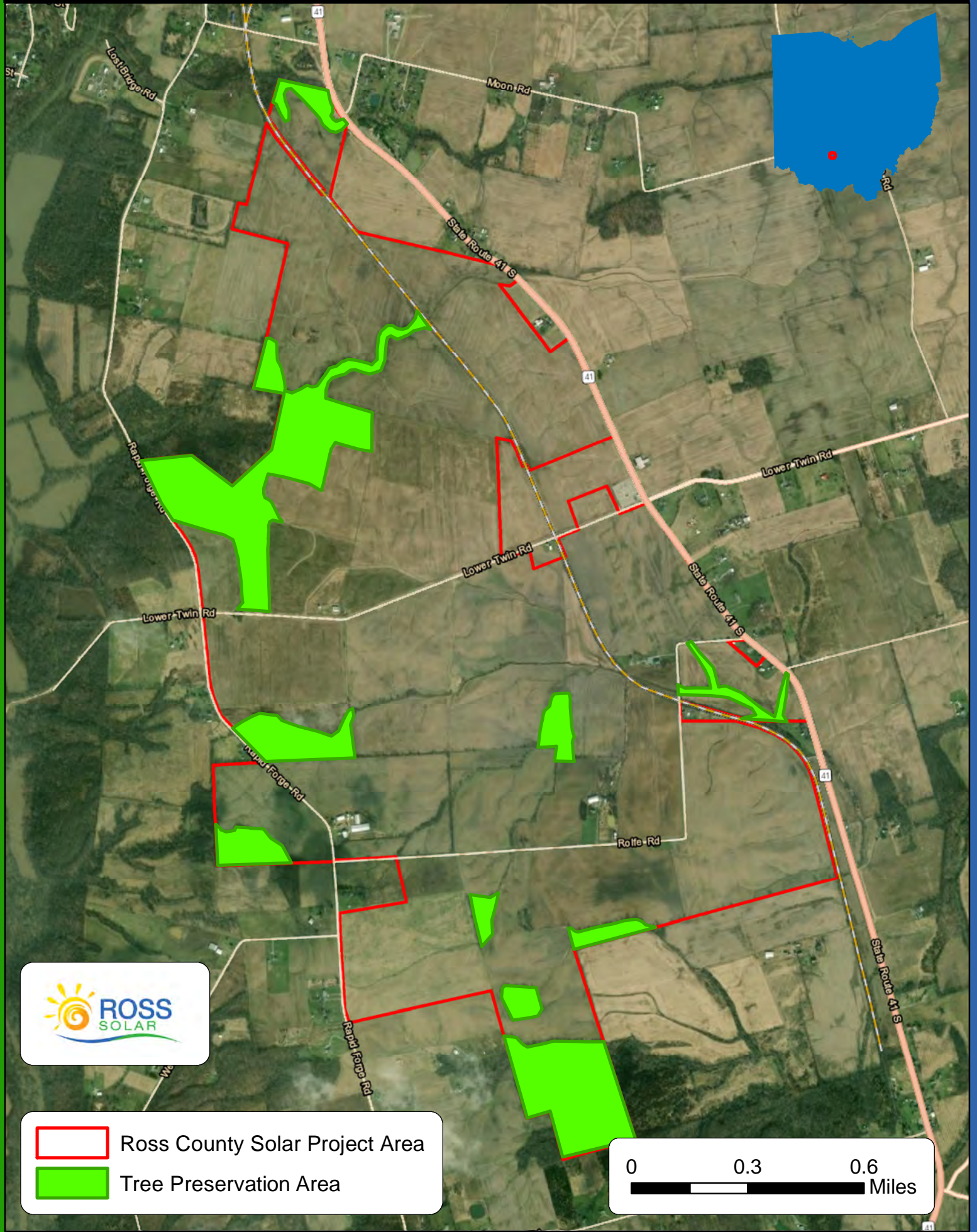
Scattered individual trees and shrubs as well as windrows and lowland areas may be cleared and grubbed to accommodate Facility operations and to maximize energy production. Tree clearing will not occur within wetland areas. The exact extent of clearing of these areas is contingent on the Final Site Plan, and final areas requiring tree clearing will be noted on the Site Plan. Tree clearing will consist of cutting and grubbing. The process will generally include the cutting of trees and woody vegetation near ground level, stump and root ball removal via heavy equipment, disposal, and grading. Disposal will most likely consist of onsite chipping or grinding and utilizing the woodchips for temporary ground cover/mulch. It is unlikely that woody debris will be hauled offsite, but if necessary, offsite disposal will be completed by a qualified contractor in accordance with local and state rules and regulations. To minimize ground disturbance, clearing equipment will utilize designated construction access routes already in place to accommodate construction activities.

4. Best Management Practices

The following best management practices (BMPs) will be utilized during construction and tree clearing activities:

- 1) Prior to construction, trees that are determined to be preserved will be surrounded by exclusionary fencing to protect the crown and/or root zone from damage, if they are near construction activities or equipment travel.
- 2) Tree clearing activities will be completed outside the seasonal clearing dates designated by the U.S. Fish and Wildlife Service, between April 1 to October 31, to ensure the protection of sensitive bat species.
- 3) The control of woody vegetation to ensure efficient Facility operations is addressed in the Vegetation Management Plan.

Tree Preservation Areas



This foregoing document was electronically filed with the Public Utilities

Commission of Ohio Docketing Information System on

10/30/2020 3:51:26 PM

in

Case No(s). 20-1380-EL-BGN

Summary: Application Application Exhibit H electronically filed by Mr. Michael J. Settineri on behalf of Ross County Solar, LLC