

Ross County Solar

Buckskin and Paint Townships, Ross County, Ohio
Figure 08-5. Operational Noise Levels and Receptors

Notes: 1. Basemap: USDA NAIP "Conus Prime" orthoimagery map service. 2. This map was generated in ArcMap on October 27, 2020. 3. Facility components provided by Ross County Solar, LLC; receptors digitized by EDR; sound level isolines provided by RSG. 4. Map created by Environmental Design and Research on behalf of Ross County Solar, LLC. 5. This is a color graphic. Reproduction in grayscale may misrepresent the data. 6. Map Scale: 1:12,000.

Non-Participating Receptor

Participating Receptor

Inverter

Facility Substation

PV Panel Area

Project Area

1-Mile Study Area

Operational Sound Level

1 dB Increment

30 dBA

35 dBA

40 dBA

44 dBA

45 dBA

50 dBA

55 dBA

0

1,000

2,000

Feet

nationalgridrenewables.com/ross-county

Page 1 of 4

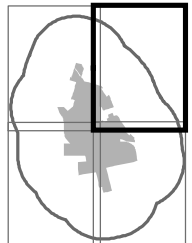
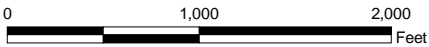


Ross County Solar

Buckskin and Paint Townships, Ross County, Ohio
Figure 08-5. Operational Noise Levels and Receptors

Notes: 1. Basemap: USDA NAIP "Conus Prime" orthoimagery map service. 2. This map was generated in ArcMap on October 27, 2020. 3. Facility components provided by Ross County Solar, LLC; receptors digitized by EDR; sound level isolines provided by RSG. 4. Map created by Environmental Design and Research on behalf of Ross County Solar, LLC. 5. This is a color graphic. Reproduction in grayscale may misrepresent the data. 6. Map Scale: 1:12,000.

- | | | |
|------------------------------|-------------------------|----------|
| ■ Non-Participating Receptor | Operational Sound Level | — 44 dBA |
| ■ Participating Receptor | ----- 1 dB Increment | — 45 dBA |
| ■ Inverter | — 30 dBA | — 50 dBA |
| ▨ Facility Substation | — 35 dBA | — 55 dBA |
| ■ PV Panel Area | — 40 dBA | |
| ■ Project Area | | |
| --- 1-Mile Study Area | | |



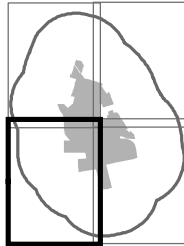
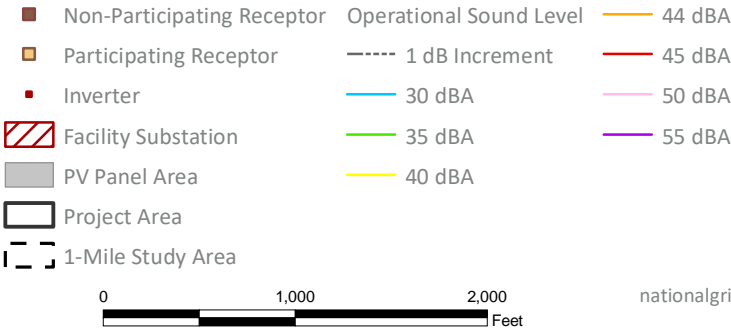


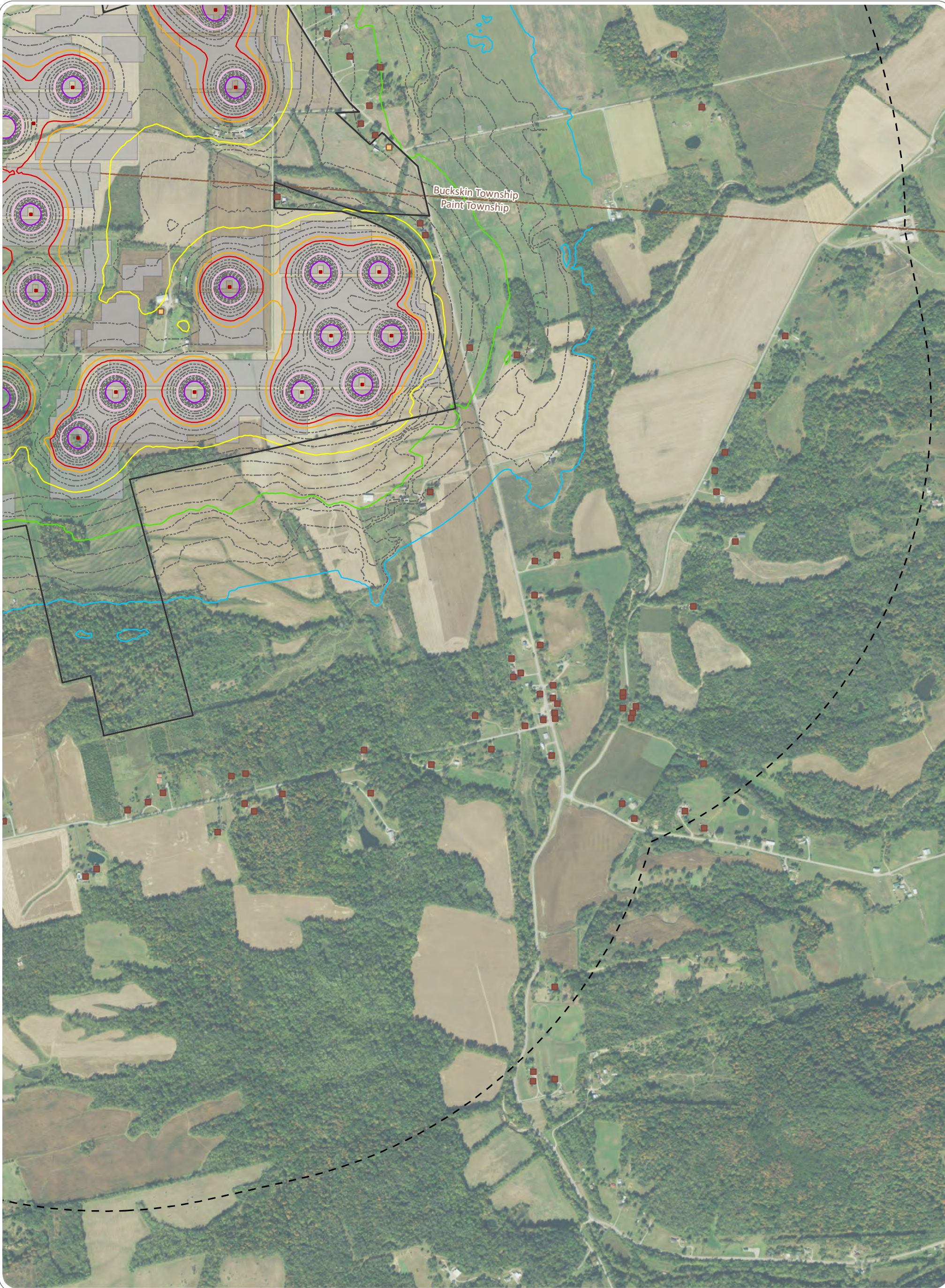
Ross County Solar

Buckskin and Paint Townships, Ross County, Ohio

Figure 08-5. Operational Noise Levels and Receptors

Notes: 1. Basemap: USDA NAIP "Conus Prime" orthoimagery map service. 2. This map was generated in ArcMap on October 27, 2020. 3. Facility components provided by Ross County Solar, LLC; receptors digitized by EDR; sound level isolines provided by RSG. 4. Map created by Environmental Design and Research on behalf of Ross County Solar, LLC. 5. This is a color graphic. Reproduction in grayscale may misrepresent the data. 6. Map Scale: 1:12,000.





Ross County Solar

Buckskin and Paint Townships, Ross County, Ohio
Figure 08-5. Operational Noise Levels and Receptors

Notes: 1. Basemap: USDA NAIP "Conus Prime" orthoimagery map service. 2. This map was generated in ArcMap on October 27, 2020. 3. Facility components provided by Ross County Solar, LLC; receptors digitized by EDR; sound level isolines provided by RSG. 4. Map created by Environmental Design and Research on behalf of Ross County Solar, LLC. 5. This is a color graphic. Reproduction in grayscale may misrepresent the data. 6. Map Scale: 1:12,000.

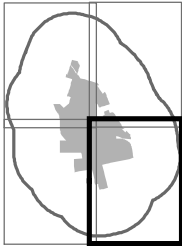
■ Non-Participating Receptor	Operational Sound Level	— 44 dBA
■ Participating Receptor	----- 1 dB Increment	— 45 dBA
■ Inverter	— 30 dBA	— 50 dBA
▨ Facility Substation	— 35 dBA	— 55 dBA
■ PV Panel Area	— 40 dBA	
■ Project Area		
--- 1-Mile Study Area		

0

1,000

2,000

Feet



This foregoing document was electronically filed with the Public Utilities

Commission of Ohio Docketing Information System on

10/30/2020 3:38:31 PM

in

Case No(s). 20-1380-EL-BGN

Summary: Application Figure 08-5 Operational Noise Levels and Receptors electronically filed by Mr. Michael J. Settineri on behalf of Ross County Solar, LLC