



September 15, 2020

Dr. Douglas Pippin, RPA
Environmental Design & Research
217 Montgomery St.
Syracuse, NY 13202

Re: Interim Report, Powell Creek Solar Project Archaeological Survey, Putnam County, Ohio

Dear Dr. Pippin:

In July 2020, Environmental Design & Research (EDR) contracted The Mannik & Smith Group, Inc. (MSG) to conduct a Phase I archaeological survey of the area of direct effects for the Powell Creek Solar project (Project) in Liberty and Palmer Townships, Putnam County, Ohio (Figures 1-2). MSG conducted fieldwork from July 20 – August 14, at which point agricultural conditions (maturation of soybean crops) made it impossible to continue surveys until soybean crops have been harvested in the fall. As requested by EDR, MSG has prepared this interim report to summarize the progress made during the four weeks of field survey as well as the archaeological sites that have been identified.

SURVEY METHODS

During the field survey, MSG followed the research design, field methods, and testing strategy in a report titled *Phase IA Cultural Resources Survey, Powell Creek Solar Project, Liberty and Palmer Townships, Putnam County, Ohio* (Magni et al. 2020), which was approved by the Ohio State Historic Preservation Office (SHPO). The research design included the use of a predictive model to identify areas of elevated sensitivity for archaeological resources within the Project Area. Approximately 662 acres were identified as exhibiting elevated sensitivity for archaeological resources, while approximately 435 acres were identified as exhibiting reduced sensitivity. EDR's research design called for survey of 100% of the elevated sensitivity acreage, and survey of 50% of the reduced sensitivity acreage. Survey methods were to follow the guidelines published by the SHPO (Ohio Historic Preservation Office 1994), including shovel testing on a 15-m (49-ft) interval grid in areas exhibiting less than 50% ground surface visibility (GSV) and pedestrian surface survey along linear transects spaced at 10-m (33-ft) intervals in areas exhibiting greater than 50% GSV.

At the beginning of the survey, MSG divided the overall Project Area into smaller, lettered Survey Areas in order to facilitate record-keeping in the field (Figure 2).

RESULTS

Between July 20 and August 14, MSG completed formal survey of approximately 222 acres identified as exhibiting reduced sensitivity for archaeological resources (51% of the total reduced sensitivity acreage) and approximately 333 acres identified as exhibiting elevated sensitivity for archaeological resources (50% of the total elevated sensitivity acreage), for a total of approximately 555 acres surveyed (50.6% of the total Project Area). MSG conducted pedestrian surface survey of 503.5 acres, while the remaining 51.5 acres were shovel tested (Figures 3-4).

MSG identified a total of 19 sites during the field survey, including seven large historic artifact scatters, three small to moderate historic artifact scatters, three small prehistoric lithic scatters, five prehistoric isolated finds and one historic

isolated find (Figures 5-8; Table 1). Of these, only one site (Field Site AZ001) currently appears to be potentially eligible for the National Register of Historic Places (NRHP). This site is a large, dense concentration of historic artifacts that appear to date primarily from the late 19th to early 20th centuries. The site is located on the west side of County Road 13 just south of State Route 613, in an area where solar panel installation, underground collection lines, and an access road are planned. The 1880 plat map of Palmer Township (Hardesty 1880) depicts a structure (likely a farmhouse) in this location, as does the 1908 15-minute Ottawa, OH topographic quadrangle (U.S. Geological Survey 2020).

The summary of archaeological sites recorded to date is found in Table 1, below. This is a preliminary finding and further artifact and field data analysis are necessary for final recommendations on the potential NRHP eligibility of each site. The only exceptions are the three isolated finds, which by definition are not eligible for the NRHP.

Table 1: Summary of Archaeological Sites Recorded during Field Survey

Field Site Designation	Site Type	Preliminary NRHP Eligibility Recommendation
AZ001	Large Historic Scatter	Potentially Eligible
AZ002a	Large Historic Scatter	Not Eligible
AZ002b	Historic Isolated Find	Not Eligible
AZ003	Large Historic Scatter	Not Eligible
AZ004	Prehistoric Isolated Find	Not Eligible
AZ005	Small Prehistoric Scatter	Not Eligible
AZ006	Prehistoric Isolated Find	Not Eligible
AZ007	Small Prehistoric Scatter	Not Eligible
AZ008	Prehistoric Isolated Find	Not Eligible
AZ009	Moderate Historic Scatter	Not Eligible
AZ010	Small Historic Scatter	Not Eligible
AZ011	Large Historic Scatter	Not Eligible
AZ012	Prehistoric Isolated Find	Not Eligible
AZ013	Prehistoric Isolated Find	Not Eligible
AZ014	Small Prehistoric Scatter	Not Eligible
AZ015	Large Historic Scatter	Not Eligible
AZ016	Moderate Historic Scatter	Not Eligible
AZ017	Large Historic Scatter	Not Eligible
AZ018	Large Historic Scatter	Not Eligible

The archaeological survey will be resumed as soon as soybean crops are harvested (anticipated to be in late September or early October 2020), allowing for pedestrian survey of the fields where survey has not yet been completed. It is currently anticipated that the field survey will be 100% complete no later than the end of October 2020.

Sincerely,



Dr. Robert C. Chidester, RPA 1066050
Principal Investigator

REFERENCES CITED

Hardesty, H. H.

1880 *Historical Hand-Atlas Illustrated, Containing ... History of Putnam County, Ohio*. H. H. Hardesty & Co., Chicago.

Magni, M., S. Lawson, D. Pippin and P. Heaton

2020 *Phase IA Cultural Resources Survey, Powell Creek Solar Project, Liberty and Palmer Townships, Putnam County, Ohio*. Report submitted to Avangrid Renewables and Powell Creek Solar, LLC, Portland, OR by Environmental Design & Research, Syracuse, NY.

Ohio Historic Preservation Office

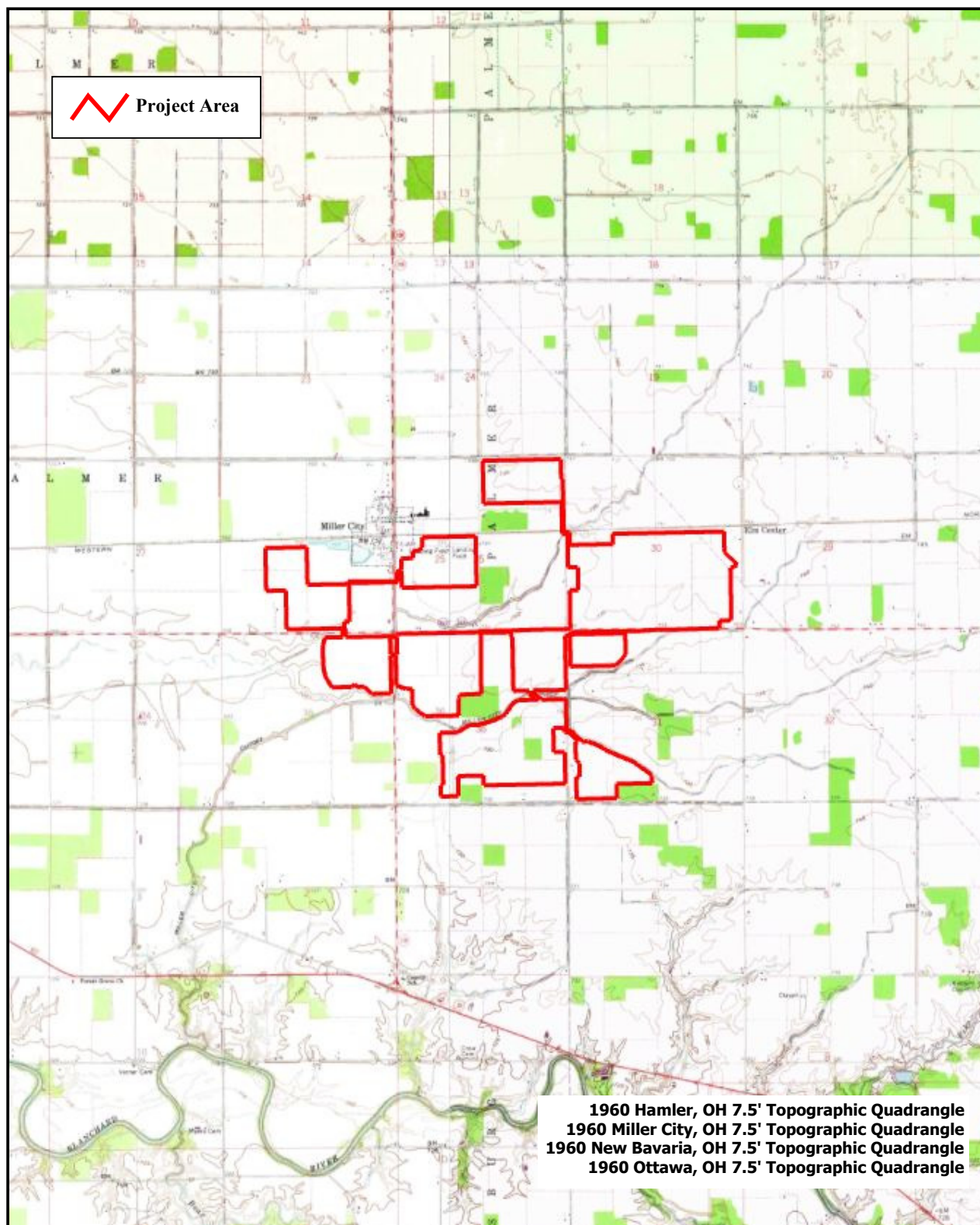
1994 *Archaeology Guidelines*. Ohio Historical Society, Columbus.

U.S. Geological Survey (USGS)

2020 1908 Ottawa, OH 15-minute Topographic Quadrangle. *topoView*. Electronic database available at <http://ngmdb.usgs.gov/maps/topoview/>. Last accessed August 19, 2020.

**ATTACHMENT A
FIGURES**





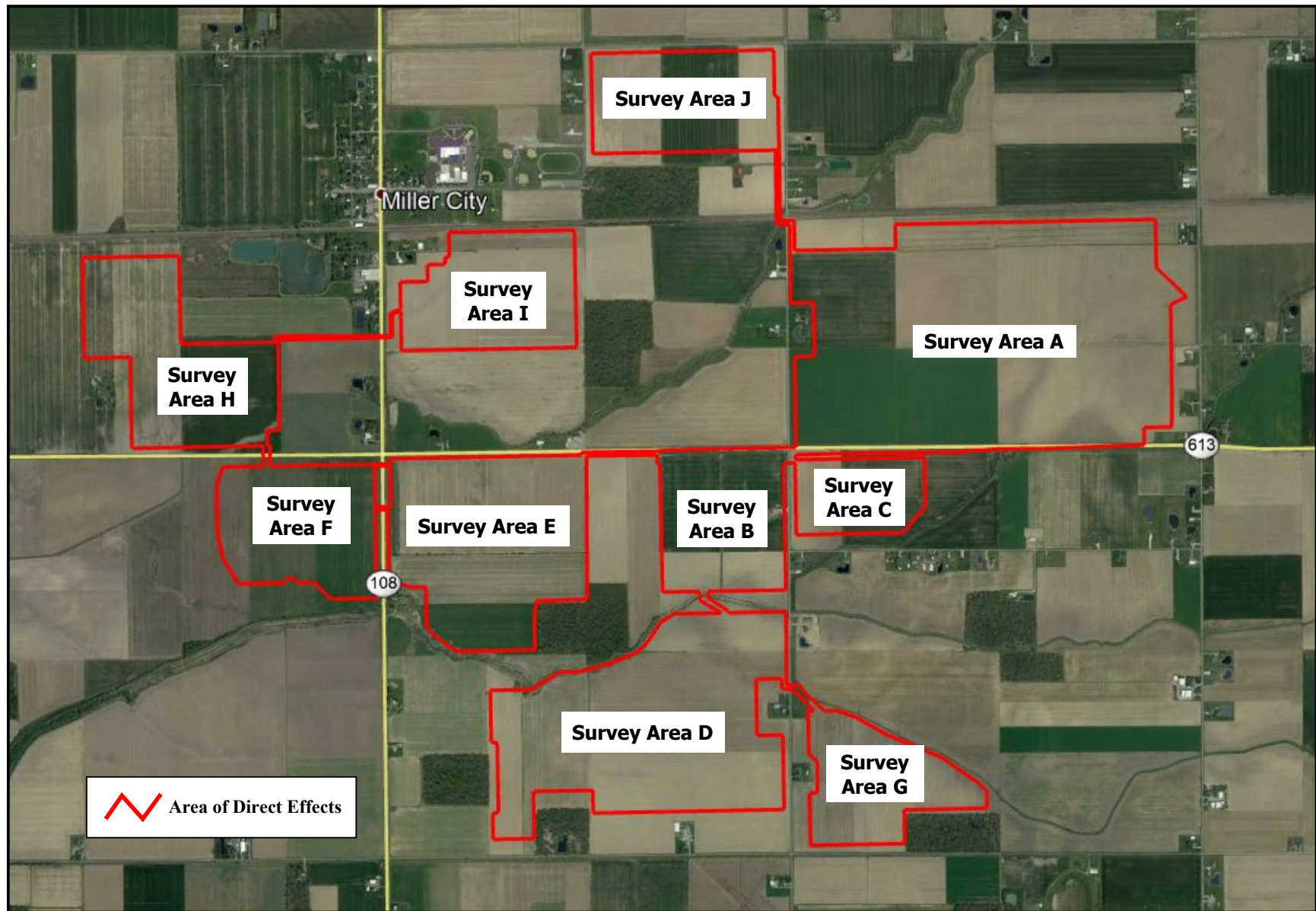
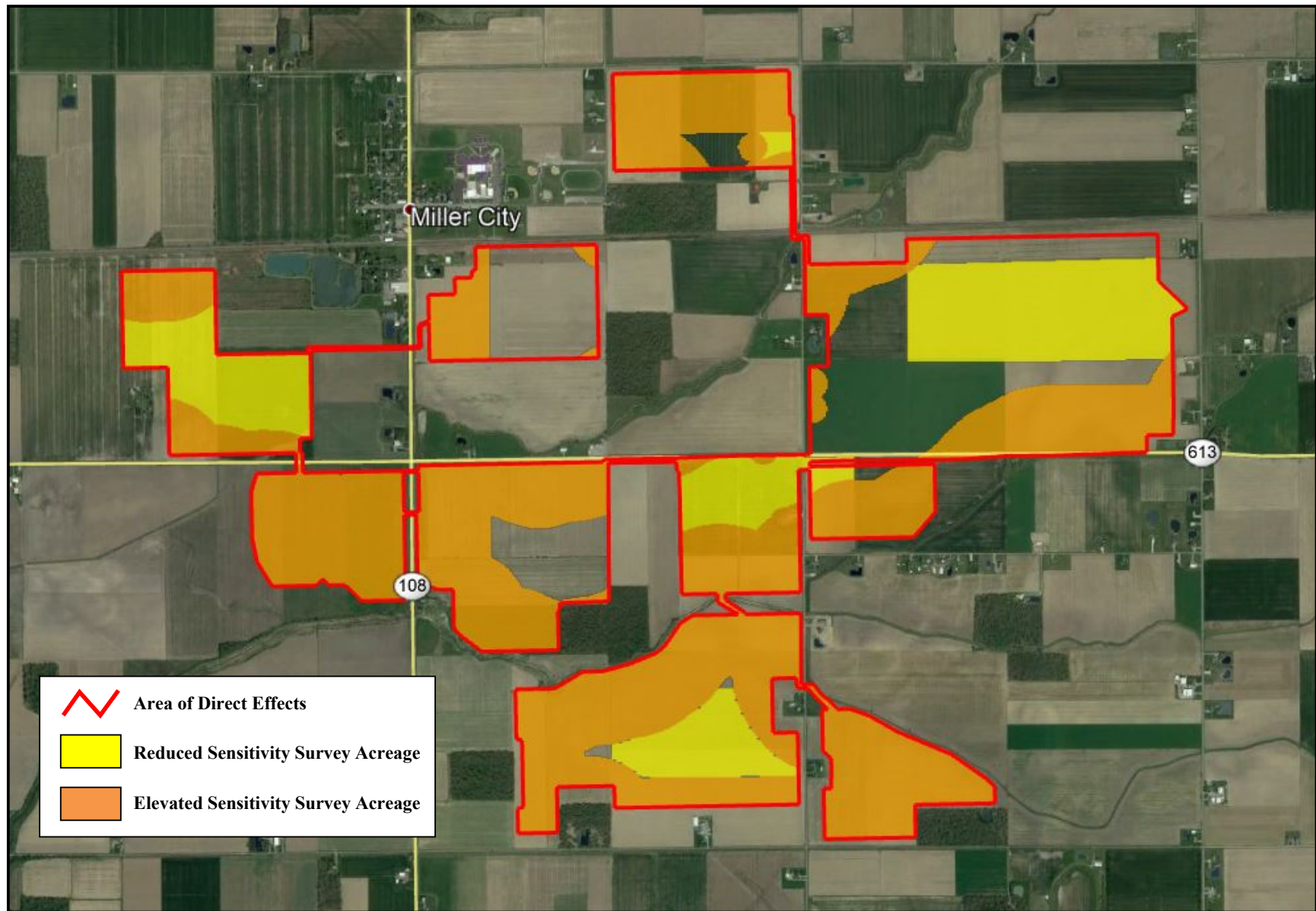
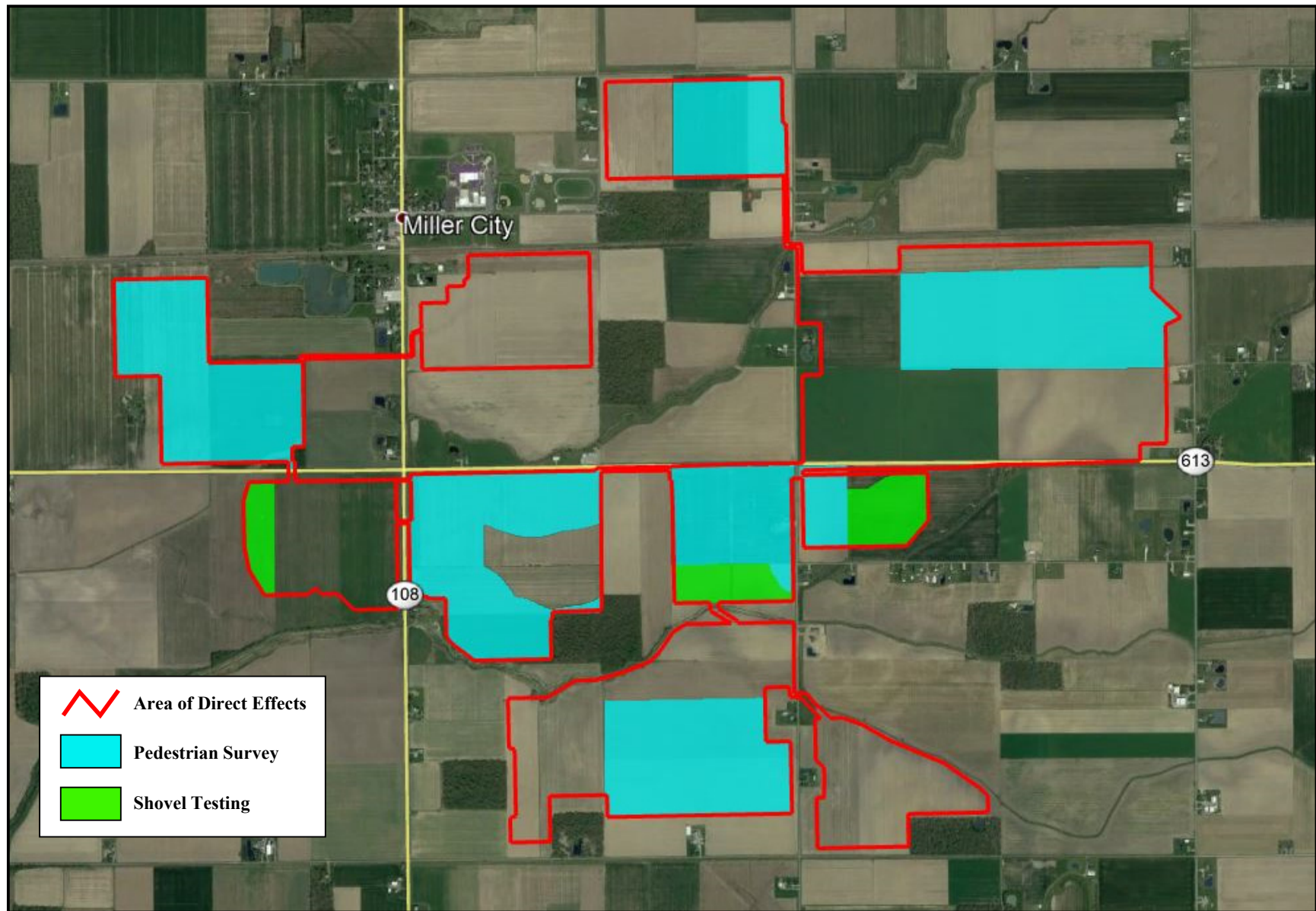


Figure 2
Area of Direct Effects and Survey Areas
Powell Creek Solar
Putnam County, Ohio







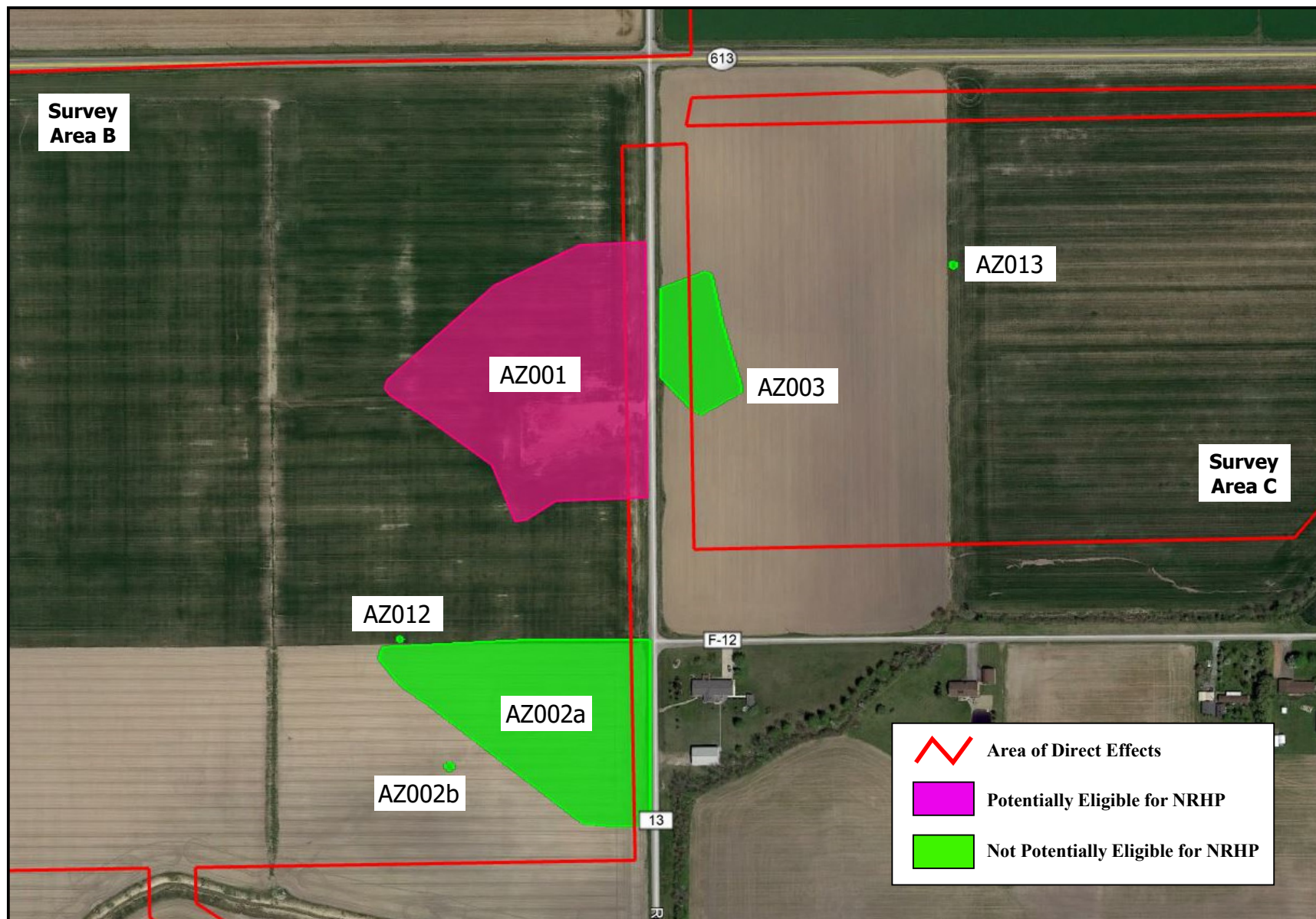
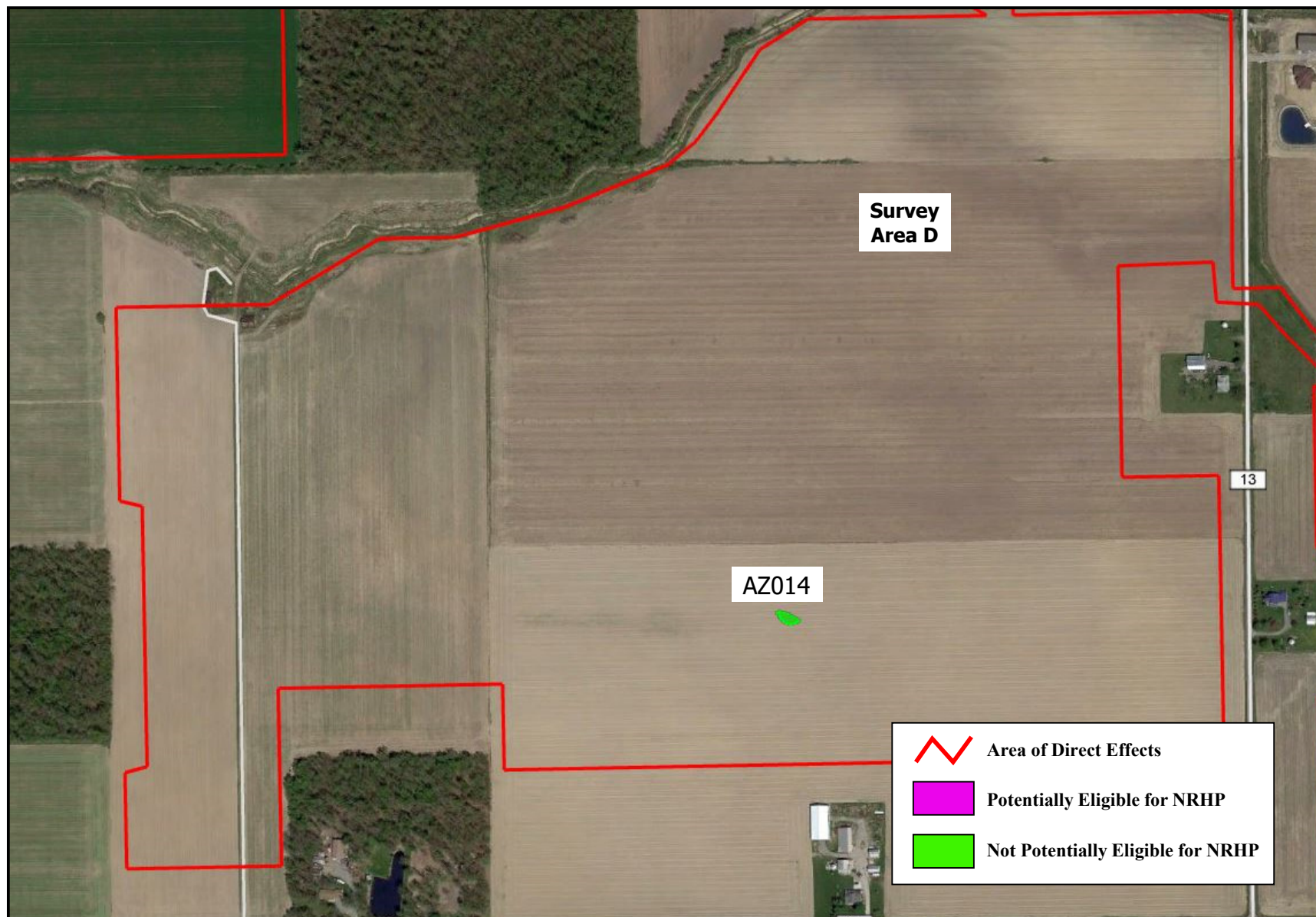
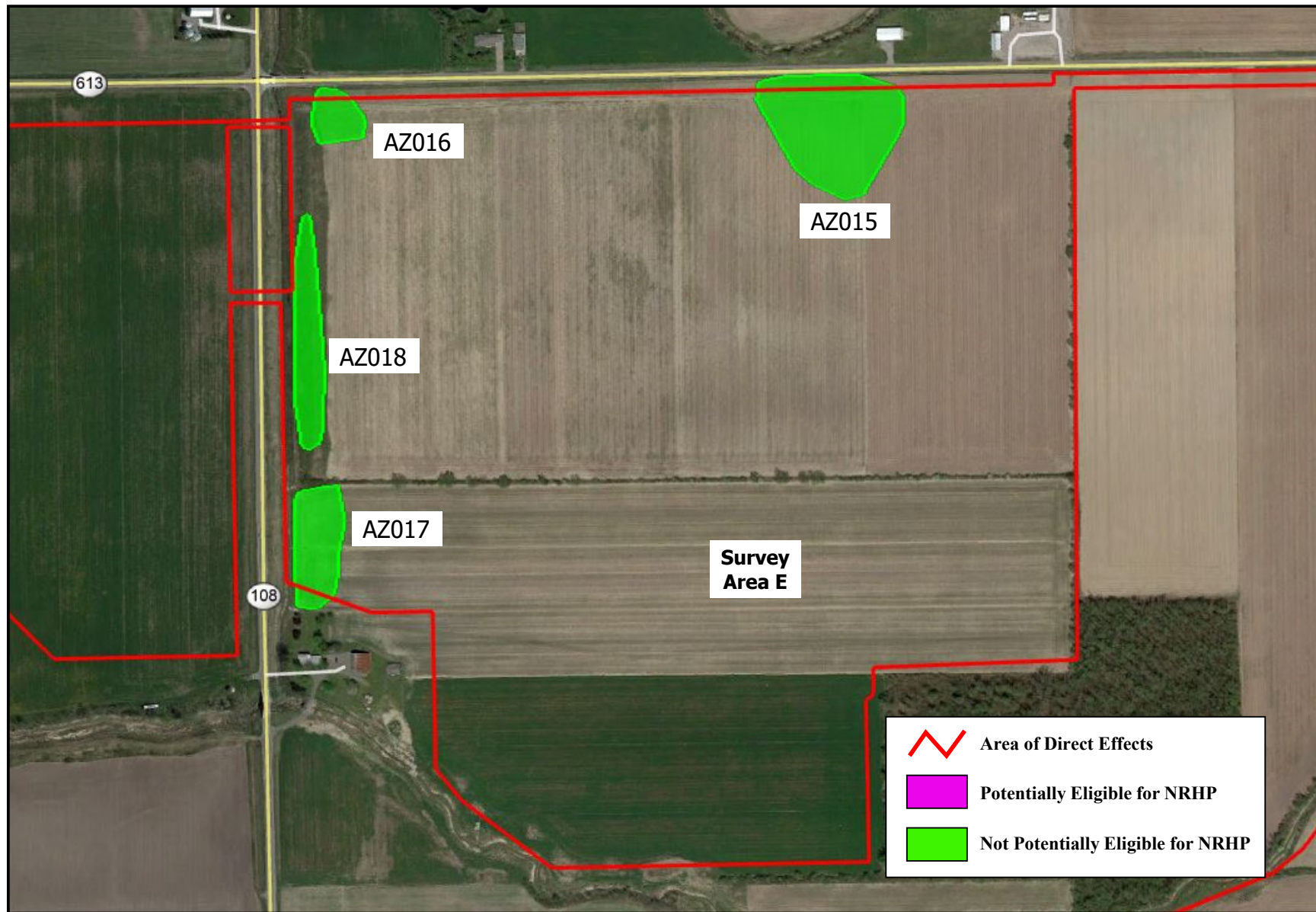
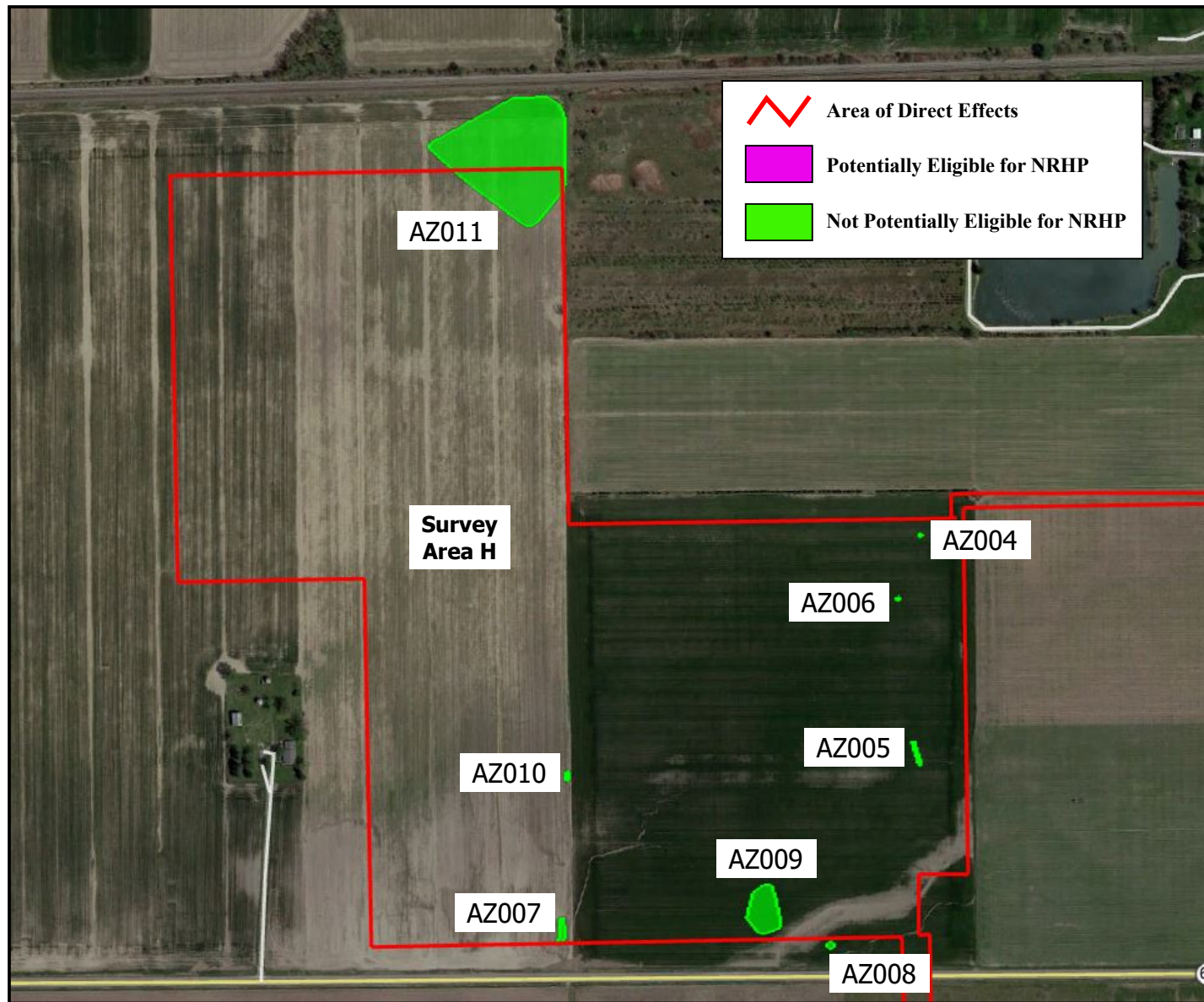


Figure 5
Archaeological Site Locations
Powell Creek Solar
Putnam County, Ohio









This foregoing document was electronically filed with the Public Utilities

Commission of Ohio Docketing Information System on

10/7/2020 12:13:24 PM

in

Case No(s). 20-1084-EL-BGN

Summary: Application Exhibit U - Archaeological Survey Interim Report electronically filed by
Teresa Orahod on behalf of Dylan F. Borchers