

**Decommissioning Plan
Powell Creek Solar
Putnam County, Ohio**



Prepared for:
Aurora Solar, LLC
1125 NW Couch Street, Suite 700
Portland, OR 97259

Prepared by:
Stantec Consulting Services Inc.
1165 Scheuring Road
De Pere, Wisconsin 54115

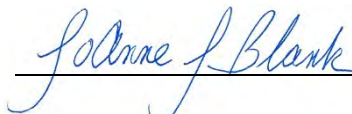
Project No: 193707860
September 14, 2020

DECOMMISSIONING PLAN
POWELL CREEK SOLAR, PUTNAM COUNTY, OHIO

This document entitled Decommissioning Plan – Powell Creek Solar, Putnam County, Ohio, was prepared by Stantec Consulting Services Inc. (“Stantec”) for the use of Aurora Solar, LLC (the “Client”), and the applicable regulatory agencies. Any reliance on this document by any other third party is strictly prohibited. The material in this document reflects Stantec’s professional judgment in light of the scope, schedule and other limitations stated in the document and in the contract between Stantec and the Client. The opinions in this document are based on conditions and information existing at the time this document was published and do not take into account any subsequent changes.



Matthew A Clementi, PE
Senior Project Manager



JoAnne J Blank, MS
Associate, Senior Scientist and Project Manager



(signature)

Michael Bach, P.E.
Associate, Senior Project Manager



Table of Contents

1.0	INTRODUCTION	1
1.1	SOLAR FARM COMPONENTS	1
1.2	TRIGGERING EVENTS AND EXPECTED LIFETIME OF PROJECT.....	1
1.3	DECOMMISSIONING SEQUENCE	2
2.0	PROJECT COMPONENTS AND DECOMMISSIONING ACTIVITIES.....	4
2.1	OVERVIEW OF SOLAR FACILITY SYSTEM.....	4
2.2	SOLAR MODULES	5
2.3	TRACKING SYSTEM AND SUPPORT	5
2.4	INVERTER STATIONS.....	6
2.5	ELECTRICAL CABLING AND CONDUITS	6
2.6	PROJECT SUBSTATION.....	6
2.7	OVERHEAD TRANSMISSION LINE	6
2.8	OPERATIONS AND MAINTENANCE BUILDING.....	7
2.9	PERIMETER FENCING AND ACCESS ROADS	7
3.0	LAND USE AND ENVIRONMENT.....	8
3.1	SOILS AND AGRICULTURAL LAND	8
3.2	RESTORATION AND REVEGETATION.....	8
3.3	SURFACE WATER DRAINAGE AND CONTROL	8
3.4	MAJOR EQUIPMENT REQUIRED FOR DECOMMISSIONING	9
4.0	DECOMMISSIONING COST ESTIMATE SUMMARY	10
4.1	DECOMMISSIONING EXPENSES.....	10
4.2	DECOMMISSIONING REVENUES.....	11
4.3	DECOMMISSIONING COST SUMMARY AND FINANCIAL ASSURANCE.....	11

LIST OF TABLES

Table 1	Primary Components of Solar Farm to be Decommissioned.....	5
Table 2	Typical Access Road Construction Materials.....	7
Table 3	Estimated Decommissioning Expenses – 150 MW Solar Array.....	10
Table 4	Estimated Decommissioning Revenues.....	11
Table 5	Net Decommissioning Summary	12

LIST OF FIGURES

Figure 1	Proposed Project Layout
Figure 2	Typical Access Road Detail

1.0 INTRODUCTION

Aurora Solar, LLC (Aurora Solar), a subsidiary of Avangrid Renewables, LLC (Avangrid), is proposing to construct the Powell Creek Solar facility (the Project) in Putnam County, Ohio.

The proposed Project is located in Putnam County, Ohio, in Palmer and Liberty Townships, south and east of the Village of Miller City. The Project boundary encompasses approximately 1,350 acres of land with approximately 1,000 acres of potential land within perimeter fencing. The maximum nameplate generating capacity of the Project will be up to 150 megawatts, alternating current (MW)_[AC]. Major components of the Project include solar modules, tracking systems and inverters/transformers (inverter stations). Powell Creek Solar is currently considering bifacial monocrystalline solar panels sourced from several manufacturers.

This Decommissioning Plan (Plan) provides a description of the decommissioning and restoration phase of the Project. Start-of-construction is planned for 2021, with a projected Commercial Operation Date in 2022. The Project will consist of the installation of the perimeter fencing; solar arrays and associated trackers, foundations, and steel piles; inverter stations; access and internal roads; electrical collection system; substation; and overhead transmission tie-in line (Figure 1).

This Plan is applicable to the decommissioning/deconstruction and restoration phases of the Project. A summary of the components to be removed is provided in Section 1.1. A summary of estimated costs associated with decommissioning the Project is also provided in Section 4.0.

1.1 SOLAR FARM COMPONENTS

The main components of the Project include:

- Solar panels and tracking system
- Foundations and steel piles
- Inverter stations
- Electrical cabling and conduits
- Site access roads
- Perimeter fencing
- 1.6-mile overhead transmission line
- Project substation

1.2 TRIGGERING EVENTS AND EXPECTED LIFETIME OF PROJECT

Project decommissioning may be triggered by an event such as the end of the power purchase agreement or when the Project reaches the end of its operational life. The

Project will be considered to be abandoned if the Project is non-operational and not working towards operational status for a period of twelve (12) consecutive months.

If properly maintained, the expected lifetime of a utility-scale solar facility is approximately 25 to 40 years with an opportunity for a project lifetime of 50 years or more with equipment replacement and repowering. Depending on market conditions and project viability, the solar arrays may be retrofitted with updated components (e.g., panels, frame, tracking system, etc.) to extend the life of the project. In the event that the modules are not retrofitted, or at the end of the Project's useful life, the panels and associated components will be decommissioned and removed from the Project site.

The value of the individual components of the solar facility will vary with time. In general, the highest component value would be expected at the time of construction with declining value over the life of the Project. Over most of the life of the Project, components such as the solar panels could be sold in the wholesale market for reuse or refurbishment. As efficiency and power production of the panels decrease due to aging and/or weathering, the resale value will decline accordingly. Secondary markets for used solar components include other utility scale solar facilities with similar designs that may require replacement equipment due to damage or normal wear over time; or other buyers (e.g., developers, consumers) that are willing to accept a slightly lower power output in return for a significantly lower price point when compared to new equipment.

Components of the solar facility that have resale value may be sold in the wholesale market. Components with no wholesale value will be salvaged and sold as scrap for recycling or disposed of at an approved offsite licensed solid waste disposal facility (landfill). Decommissioning activities will include removal of the arrays and associated components as listed in Section 1.1 and described in Section 2.

1.3 DECOMMISSIONING SEQUENCE

Decommissioning activities will begin within twelve months of the Project ceasing operation and are anticipated to be completed in six to twelve months. Aurora Solar will be the responsible party. Monitoring and site restoration may extend beyond this period to ensure successful revegetation and rehabilitation. The anticipated sequence of decommissioning and removal is described below; however, overlap of activities is expected.

- Reinforce access roads, if needed, and prepare site for component removal
- Install erosion control fencing and other best management practices (BMPs) to protect sensitive resources and control erosion during decommissioning activities
- De-energize solar arrays
- Dismantle panels and racking
- Remove frame and internal components
- Remove portions of structural foundations to a depth of at least three feet (36 inches) below the surface and backfill sites

DECOMMISSIONING PLAN
POWELL CREEK SOLAR, PUTNAM COUNTY, OHIO

- Remove inverter stations and foundations
- Remove electrical cables and conduits to a depth of at least three feet (36 inches) below the surface
- Remove access and internal roads and grade site (if required)
- Remove substation
- Remove overhead transmission line and poles
- De-compact subsoils as needed, restore and revegetate disturbed land to pre-construction conditions to the extent practicable

2.0 PROJECT COMPONENTS AND DECOMMISSIONING ACTIVITIES

The solar facility components and decommissioning activities necessary to restore the Project area, as near as practicable, to pre-construction conditions are described within this section.

2.1 OVERVIEW OF SOLAR FACILITY SYSTEM

Powell Creek Solar anticipates utilizing approximately 477,400 solar modules, with a total nameplate generating capacity of approximately 210.056 MW, direct current (DC) (150.0 MW_[AC]). The Powell Creek Solar Project area encompasses approximately 1,350 acres. The generating facilities will be placed within approximately 1,000 acres of land bounded by perimeter fencing as shown on Figure 1 (preliminary design; subject to modification). The land within the perimeter fencing is predominantly agricultural land. Statistics and estimates provided in this Plan are based on a LONGi LR4-72HBD 440-watt bifacial module although the final panel manufacturer has not been selected at the time of this report.

Collection cabling will be installed below the surface at a depth of approximately four feet (48 inches). Foundations, steel piles, and electric cabling and conduit less than three feet (36 inches) below the soil surface will be removed. Components and cabling deeper than 36 inches below the surface will be abandoned in place. Access roads may be left in place if requested and/or agreed to by the landowner; however, for purposes of this assessment, all access roads are assumed to be removed. Public roads damaged or modified during the decommissioning and reclamation process will be repaired upon completion of the decommissioning phase. An estimated cost of public road repair is included in Table 3.

Estimated quantities of materials to be removed and salvaged or disposed of are included in this section. Many of the materials described have salvage value; although, there are some components that will likely have none at the time of decommissioning. Removed materials will be salvaged or recycled to the extent possible. Other waste materials will be disposed of in accordance with state and federal law in an approved licensed solid waste facility. Solar panels may have value in a resale market, depending on their condition at the end of the Project life. If the Project is decommissioned prior to the anticipated 25 to 30-year timeframe, the resale value of components may be substantially higher than at the end of the projected Project.

Table 1 presents a summary of the primary components of the Project included in this decommissioning plan.

Table 1 Primary Components of Solar Farm to be Decommissioned

Component	Quantity	Unit of Measure
Solar Modules (approximate)	477,400	Each
Tracking System (combined 2 and 3-string trackers)	5,877	Tracker
Steel Piles	68,744	Each
Inverter Stations with Foundations	62	Each
Electrical Cables and Conduits (above and below ground cabling)	2,500,000	Linear Foot (estimated)
Perimeter Fencing	88,000	Linear Foot
Access Roads (approximate)	41,200	Linear Foot
1.6-mile Overhead Transmission Line	1.6	mile
Substation	1	Each

2.2 SOLAR MODULES

Powell Creek Solar is considering a bifacial monocrystalline panel (440 watt) from LONGi or a similar module from other manufacturers for the Project. Each module assembly (with frame) has a total weight of approximately 61 pounds (27.5kg). The modules will be approximately 82 inches by 41 inches in size and are mainly comprised of non-metallic materials such as silicon, glass, composite film, plastic, and epoxies, with an anodized aluminum frame.

At the time of decommissioning, module components in working condition may be refurbished and sold in a secondary market yielding greater revenue than selling as salvage material.

2.3 TRACKING SYSTEM AND SUPPORT

The solar modules will be mounted on a single-axis tracking system, such as the DuraTrack HZ manufactured by Array Technologies, or similar system. Each full, three-string tracker will be approximately 96 meters (315 feet) in length and will support 84 solar modules. Smaller two-string trackers, supporting 56 panels each, will be employed at the edges of the layout to efficiently utilize available space. The tracking system is mainly comprised of high-strength galvanized steel and anodized aluminum; steel piles that support the system are assumed to be comprised of galvanized steel.

The solar arrays will be deactivated from the surrounding electrical system and made safe for disassembly. Liquid wastes, including oils and hydraulic fluids will be removed and properly disposed of or recycled according to regulations current at the time of decommissioning. Electronic components, and internal electrical wiring will be removed and salvaged. The steel piles will be either cut and removed to a depth of three feet (36

inches) below the ground surface or completely removed. This will be determined at the time of decommissioning.

The supports, tracking system, and posts contain salvageable materials which can be sold to provide revenue to offset the decommissioning costs.

2.4 INVERTER STATIONS

The combined inverters/transformers (inverter stations) generally sit on small concrete footings or piers on steel piles within the array. The inverters will be deactivated, disassembled and removed. For purposes of this report, it is assumed that piers with steel piles will be utilized. Depending on condition, the equipment may be sold for refurbishment and re-use. If not re-used, they will be salvaged or disposed of at an approved solid waste management facility.

2.5 ELECTRICAL CABLING AND CONDUITS

The Project's underground electrical collection system will be placed at a depth of approximately four feet (48 inches) below the ground surface. Cabling that is at or above a depth of three feet will be removed and salvaged, while cable greater than three feet in depth will be abandoned in place. If portions of the system are placed below three feet, they should not interfere with future farming activities because of the depth. No recovery cost has been assumed for the collection cabling, although it is likely to have salvage value at the time of removal. If, at the time of decommissioning, the salvage value of any cable greater than three feet exceeds the cost of extraction and restoration, the cables may be removed and salvaged.

2.6 PROJECT SUBSTATION

Powell Creek Solar will include a Project substation within an approximately 240-foot by 255-foot footprint. The substation will contain within its perimeter, a gravel pad, power transformer and footings, electrical control house and concrete foundations, as needed. The substation transformer may be sold for re-use or salvage. Components of the substation that cannot be salvaged will be transported off-site for disposal at an approved waste management facility. Although there is some potential that the Project substation may remain at the end of the Project life, an estimated decommissioning cost has been included in this Plan.

2.7 OVERHEAD TRANSMISSION LINE

The Project includes a 138 kilovolt (kV) generation tie-in line approximately 1.6 miles in length. The point of interconnection will be a new switchyard, constructed and owned by American Electric Power (AEP). Decommissioning of the AEP switchyard is not included in this Plan. If the Project substation described in Section 2.6 is removed and there is no planned alternate use of the transmission line, then the transmission line poles and cable, will also be removed. Transmission line poles can be re-purposed within their service life

and the resale value would be much higher than scrap value. Pole sites will be backfilled with native soils and returned to agricultural use.

2.8 OPERATIONS AND MAINTENANCE BUILDING

Powell Creek Solar will construct an approximately 1,300 square foot building to utilize for operations and maintenance (O&M). The building, along with the parcel it is located on will be sold at the end of the Project life; therefore, no O&M building removal is included in this Plan.

2.9 PERIMETER FENCING AND ACCESS ROADS

The Powell Creek Solar site will include a security fence around the perimeter of the site and exclusionary area. The fence will total approximately 88,000 feet in length. Access drives will provide direct access to the solar facility from local roads and along the inner perimeter of the arrays. Internal roads will be located within the array to allow access to the equipment. The site access drives will be approximately 16 feet in width and total approximately 41,200 feet (7.8 miles) in length. The access road lengths may change with final Project design. To be conservative, the decommissioning estimate assumes that all access roads will be completely removed.

During installation of the Project access roads, subgrade conditions may be stabilized by the incorporation of cement into soft ground. This Plan assumes the cement materials will be incorporated into the top ten-inches of existing soil which will then be capped with two-inches of granular fill. The estimated quantity of these materials is provided in Table 2. A typical access road cross-section is shown in Figure 2.

Table 2 Typical Access Road Construction Materials

Item	Quantity	Unit
Cement Stabilized Soil, 10-inch thick	20,350	Cubic Yards
Compacted granular fill, 2-inch thick	4,070	Cubic Yards

Decommissioning activities include the removal and stockpiling of aggregate materials onsite for salvage preparation. It is conservatively assumed that all cement stabilized soil and aggregate materials will be removed from the Project site and hauled up to five miles from the Project area. Following removal of aggregate and cement stabilized soil, the access road areas will be graded, de-compacted with deep ripper or chisel plow (ripped to 18 inches), back-filled with native subsoil and topsoil, as needed, and graded as necessary.

3.0 LAND USE AND ENVIRONMENT

3.1 SOILS AND AGRICULTURAL LAND

Areas of the Project that were previously utilized for agricultural purposes will be restored to their preconstruction condition and land use as dictated by landowner lease agreements. Restored areas will be revegetated in consultation with the current landowner and in compliance with regulations in place at the time of decommissioning. Land disturbed by Project facilities will be restored in such a way to be used in a reasonably similar manner to its original intended use as it existed prior to Project construction.

3.2 RESTORATION AND REVEGETATION

Project sites that have been excavated and backfilled will be graded as previously described. Soils compacted during de-construction activities will be de-compacted, as necessary, to restore the land to pre-construction land use. If present, drain tiles that have been damaged will be restored to pre-construction condition. Topsoil will be placed on disturbed areas and seeded with appropriate vegetation or in coordination with landowners within agricultural land. Work will be completed to comply with the conditions agreed upon by Powell Creek Solar and the OPSB or as directed by regulations in affect at the time of decommissioning.

3.3 SURFACE WATER DRAINAGE AND CONTROL

The proposed Project area is predominantly located in actively drained agricultural land. The terrain is relatively flat with several ditches protected by grassy buffers and berms along the edges. The Project facilities are being sited to avoid wetlands, waterways, and drainage ditches to the extent practicable. The existing Project site conditions and proposed BMPs to protect surface water features will be detailed in a Project Stormwater Pollution Prevention Plan (SWPPP) for the Project prior to the commencement of construction activities.

Surface water conditions at the Project site will be reassessed prior to the decommissioning phase. Powell Creek Solar will obtain the required water quality permits from the Ohio Environmental Protection Agency (OEPA) and the U.S. Army Corp of Engineers (USACE), if needed, before decommissioning of the Project. Construction storm water permits will also be obtained and a SWPPP prepared describing the protection needed to reflect conditions present at the time of decommissioning. BMPs may include construction entrances, temporary seeding, permanent seeding, mulching (in non-agricultural areas), erosion control matting, silt fence, filter berms, and filter socks.

3.4 MAJOR EQUIPMENT REQUIRED FOR DECOMMISSIONING

The activities involved in decommissioning the Project include removal of the above ground components of the Project and restoration as described in Sections 2 and 3.2.

Equipment required for the decommissioning activities is similar to what is needed to construct the solar facility and may include, but is not limited to: small cranes, low ground pressure (LGP) track mounted excavators, backhoes, LGP track bulldozers, LGP off-road end-dump trucks, front-end loaders, deep rippers, water trucks, disc plows and tractors to restore subgrade conditions, and ancillary equipment. Over-the-road dump trucks will be required to transport material removed from the site to disposal facilities.

4.0 DECOMMISSIONING COST ESTIMATE SUMMARY

Expenses associated with decommissioning the Project will be dependent on labor costs at the time of decommissioning. For the purposes of this report approximate 2019-2020 average market values were used to estimate labor expenses. Fluctuation and inflation of the labor costs were not factored into the estimates.

4.1 DECOMMISSIONING EXPENSES

Project decommissioning will incur costs associated with disposal of components not sold for salvage, including materials which will be disposed of at a licensed facility, as required. Decommissioning costs also include backfilling, grading and restoration of the proposed Project site as described in Section 2. Table 3 summarizes the estimates for activities associated with the major components of the Project.

Table 3 Estimated Decommissioning Expenses – 150 MW Solar Array

Activity	Unit	Quantity	Cost per Unit	Total
Overhead and management (includes estimated permitting required)	Lump Sum	1	\$790,000.00	\$790,000
Public road repair	Lump Sum	1	\$224,000	\$224,000
Solar modules; disassembly and removal	Each	477,400	\$3.75	\$1,790,250
Tracking System disassembly and removal (equivalent 3-string trackers)	Each	5,684	\$620.00	\$3,524,080
Steel pile/post removal	Each	68,000	\$9.50	\$646,000
Inverter stations with foundations	Each	62	\$1,900.00	\$117,800
Access road excavation and removal	Lump Sum	1	\$366,000.00	\$366,000
Perimeter fence removal	Linear Feet	88,000	\$2.80	\$246,400
Topsoil replacement for roads and rehabilitation of site	Lump Sum	1	\$727,000.00	\$727,000
Overhead transmission line and poles	Per Mile	1.6	\$32,000.00	\$51,200
Project substation	Each		\$300,000	\$300,000
Total estimated decommissioning cost				\$8,782,730

4.2 DECOMMISSIONING REVENUES

Project revenue will be realized through the sale of the solar facility components and construction materials. Modules and other components may be sold within a secondary market or as salvage. The market value of steel and other materials fluctuates daily and has varied widely over the past five years. Salvage value estimates were based on an approximate five-year-average price of steel and copper derived from sources including on-line recycling companies and United States Geological Survey (USGS) commodity summaries. The price used to value the steel used in this report is \$253 per metric ton; aluminum at \$0.40 per pound; silicon at \$0.40 per pound and glass at \$0.05 per pound. The main component of the tracking system and piles is assumed to be salvageable steel. Solar panels are estimated to contain approximately 75 percent glass, 8 percent aluminum and 5 percent silicon. A 70 percent recovery rate was assumed for aluminum and all panel components, due to the processing required to separate the panel components. Alternative and more efficient methods of recycling solar panels are anticipated before this Project is decommissioned, given the large number of solar facilities that are currently being developed. Table 4 summarizes the potential salvage value for the solar array components and construction materials.

Table 4 Estimated Decommissioning Revenues

Item	Unit of Measurement	Quantity per Unit	Salvage Price per Unit	Total Salvage Price per Item	Number of Items	Total
Panels - Silicon	Pounds per Panel	2.1	\$0.40	\$0.84	477,400	\$401,016
Panels - Aluminum	Pounds per Panel	3.4	\$0.40	\$1.36	477,400	\$649,264
Panels - Glass	Pounds per Panel	32.0	\$0.05	\$1.60	477,400	\$763,840
Tracking System and Posts	Metric tons per MW _[AC]	60	\$253	\$15,180	150	\$2,277,000
Transmission Line Pole Structures	Metric Tons per Pole	4.5	\$253	\$1,138.5	12	\$13,662
Substation	Each	1	\$50,000	\$50,000	1	\$50,000
						\$4,154,782

4.3 DECOMMISSIONING COST SUMMARY AND FINANCIAL ASSURANCE

The following is a summary of the net estimated cost to decommission the Project, using the information detailed in Sections 4.1 and 4.2. Estimates are based on 2019-2020 prices, with no market fluctuations or inflation considered.

DECOMMISSIONING PLAN
POWELL CREEK SOLAR, PUTNAM COUNTY, OHIO

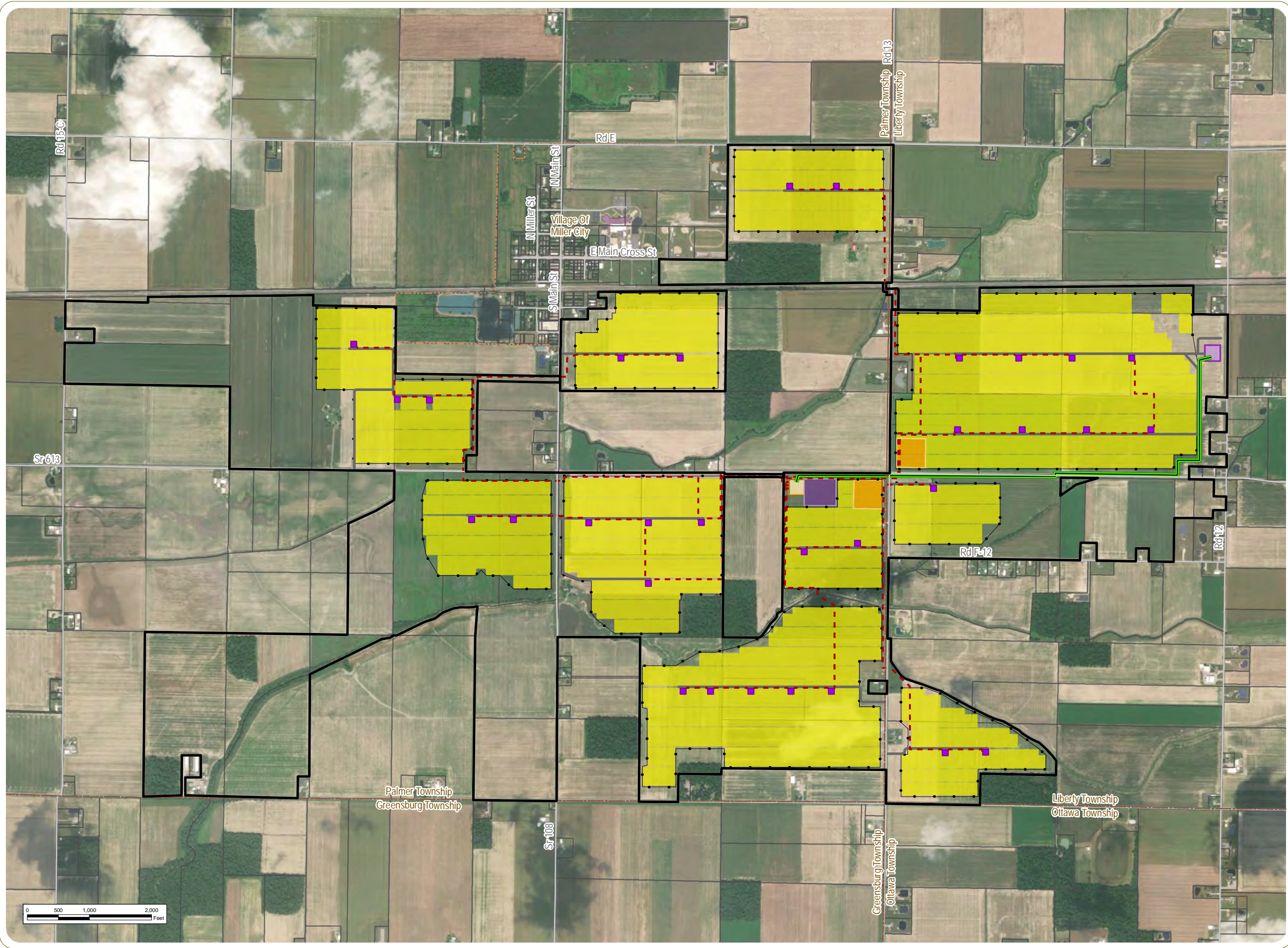
Table 5 Net Decommissioning Summary

Item	Cost/Revenue
Decommissioning Expenses	\$8, 782,730
Potential Revenue – salvage value of panel components and recoverable materials	\$4,154,782
Net Decommissioning Cost	\$4,627,948

FIGURES

DECOMMISSIONING PLAN
POWELL CREEK SOLAR, PUTNAM COUNTY, OHIO

Figure 1 Proposed Project Layout



Powell Creek Solar

Liberty and Palmer
Townships, Putnam County,
Ohio

Preliminary Facility Layout

- Inverter
- Access Road
- Collection Line
- Fence Line
- Transmission Line
- Public Road
- PV Panel Area
- Collection Substation
- Alternate Collection Substation
- POI Substation
- O&M and Laydown Yard
- Project Area
- Parcel Boundary
- City/Village Boundary
- Township Boundary

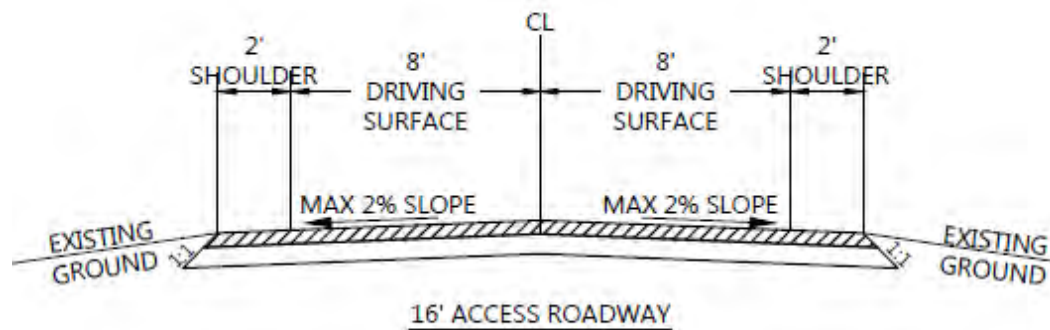


Notes: 1. Basemap: ESRI ArcGIS Online "World Imagery" map service. 2. This map was generated in ArcMap on May 20, 2020. 3. This is a color graphic. Reproduction in grayscale may misrepresent the data.



www.edrdpc.com

Figure 2 Typical Access Road Detail
(drawing is preliminary and subject to change during final Project design)



NOTES:

1. CONTRACTOR SHALL CONSTRUCT CROSS-SLOPE ROAD SECTION WHERE ACCESS ROADS ARE CONSTRUCTED ON A SIDE SLOPE, AND WHERE OTHERWISE NOTED ON PLANS, TO ENSURE THAT ROADS AND SHOULDERS REMAIN WELL DRAINED AT ALL TIMES.
2. ASSUME 2" GRAVEL COURSE OVER 12" CEMENT STABILIZED NATIVE EARTH.

This foregoing document was electronically filed with the Public Utilities

Commission of Ohio Docketing Information System on

10/7/2020 11:13:29 AM

in

Case No(s). 20-1084-EL-BGN

Summary: Application Exhibit P - Draft Decommissioning Plan electronically filed by Teresa Orahoo on behalf of Dylan F. Borchers