



## **Exhibit H**

### **Tree and Shrub Clearing Plan**

**Case No. 20-0972-EL-BGN**

**Yellowbud Solar, LLC**  
**Tree and Shrub Clearing Plan**



Plan Prepared by Geronimo Energy on behalf of Yellowbud Solar, LLC

## Contents

1. Introduction.....	2
2. Tree Preservation Areas .....	2
3. Tree Clearing and Grubbing .....	2
4. Best Management Practices.....	2

## 1. Introduction

Yellowbud Solar, LLC (Yellowbud) proposes to construct an up to 274 MW solar array (the Facility) in Ross County and Pickaway County, Ohio. Yellowbud has developed this Tree and Shrub Clearing Plan to ensure the protection of core woodlots and for the efficient clearing and disposal of woody vegetation across the site.

## 2. Tree Preservation Areas

Yellowbud has identified core woodlots that will be preserved for the life of the Facility. These Tree Preservation Areas are identified in Appendix A and consist of approximately 42 acres within the Facility boundary.

## 3. Tree Clearing and Grubbing

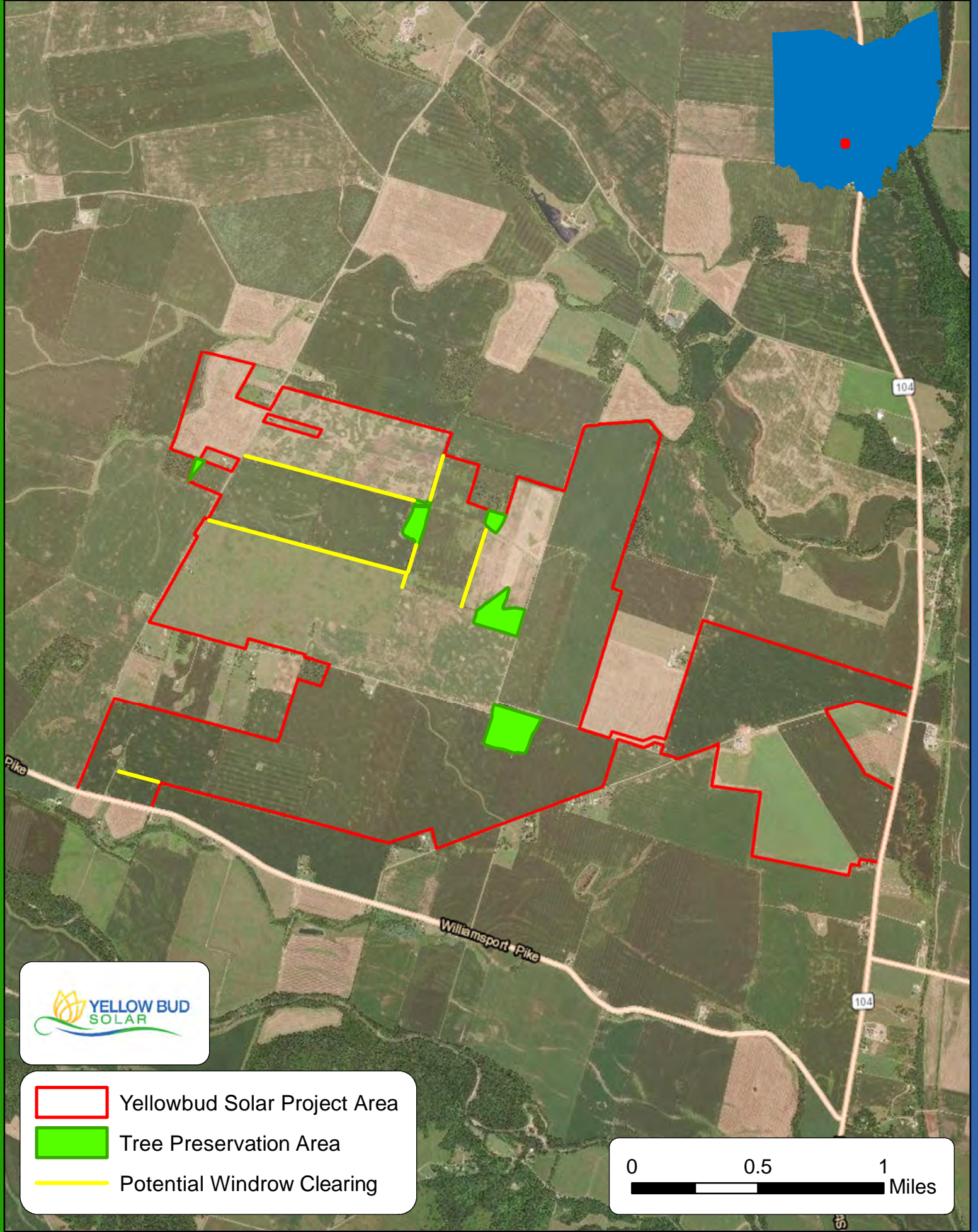
Scattered individual trees and shrubs as well as windrows may be cleared and grubbed to accommodate Facility operations and to maximize energy production. Approximately 12,315 linear feet of windrows are located outside of the tree preservation areas and may be cleared on an as needed basis. Tree clearing will not occur in wetland areas along these windrows. The exact extent of clearing of these areas is contingent on the final Facility layout, and final areas requiring tree clearing will be noted on the layout. Tree clearing will consist of cutting and grubbing. The process will generally include the cutting of trees and woody vegetation near ground level, stump and root ball removal via heavy equipment, disposal, and grading. Disposal will most likely consist of onsite chipping or grinding and utilizing the woodchips for temporary ground cover/mulch. It is unlikely that woody debris will be hauled offsite, but if necessary offsite disposal will be completed by a qualified contractor in accordance with local and state rules and regulations. To minimize ground disturbance, clearing equipment will utilize designated construction access routes already in place to accommodate construction activities.




## 4. Best Management Practices

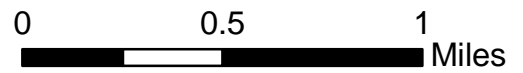
The following best management practices (BMPs) will be utilized during construction and tree clearing activities:

- 1) Trees that are determined to be preserved will utilize exclusionary fencing to protect the crown and or root zone from damage prior to construction if they are nearby to construction activities or equipment travel.
- 2) Tree clearing activities will be completed outside the seasonal clearing dates designated by the U.S. Fish and Wildlife Service, between April 1 to October 31 to ensure the protection of sensitive bat species.
- 3) The control of woody vegetation to ensure efficient Facility operations is addressed in the Vegetation Management Plan.

# Tree Preservation Areas



-  Yellowbud Solar Project Area
-  Tree Preservation Area
-  Potential Windrow Clearing



**This foregoing document was electronically filed with the Public Utilities**

**Commission of Ohio Docketing Information System on**

**7/21/2020 2:01:15 PM**

**in**

**Case No(s). 20-0972-EL-BGN**

Summary: Application Exhibit H electronically filed by Mr. Michael J. Settineri on behalf of Yellowbud Solar, LLC