

**Duke Energy Ohio  
Case No. 20-0134-EL-BLN  
STAFF First Set of Data Requests  
Date Received: May 1, 2020**

**STAFF-DR-01-003  
SUPPLEMENTAL**

**REQUEST:**

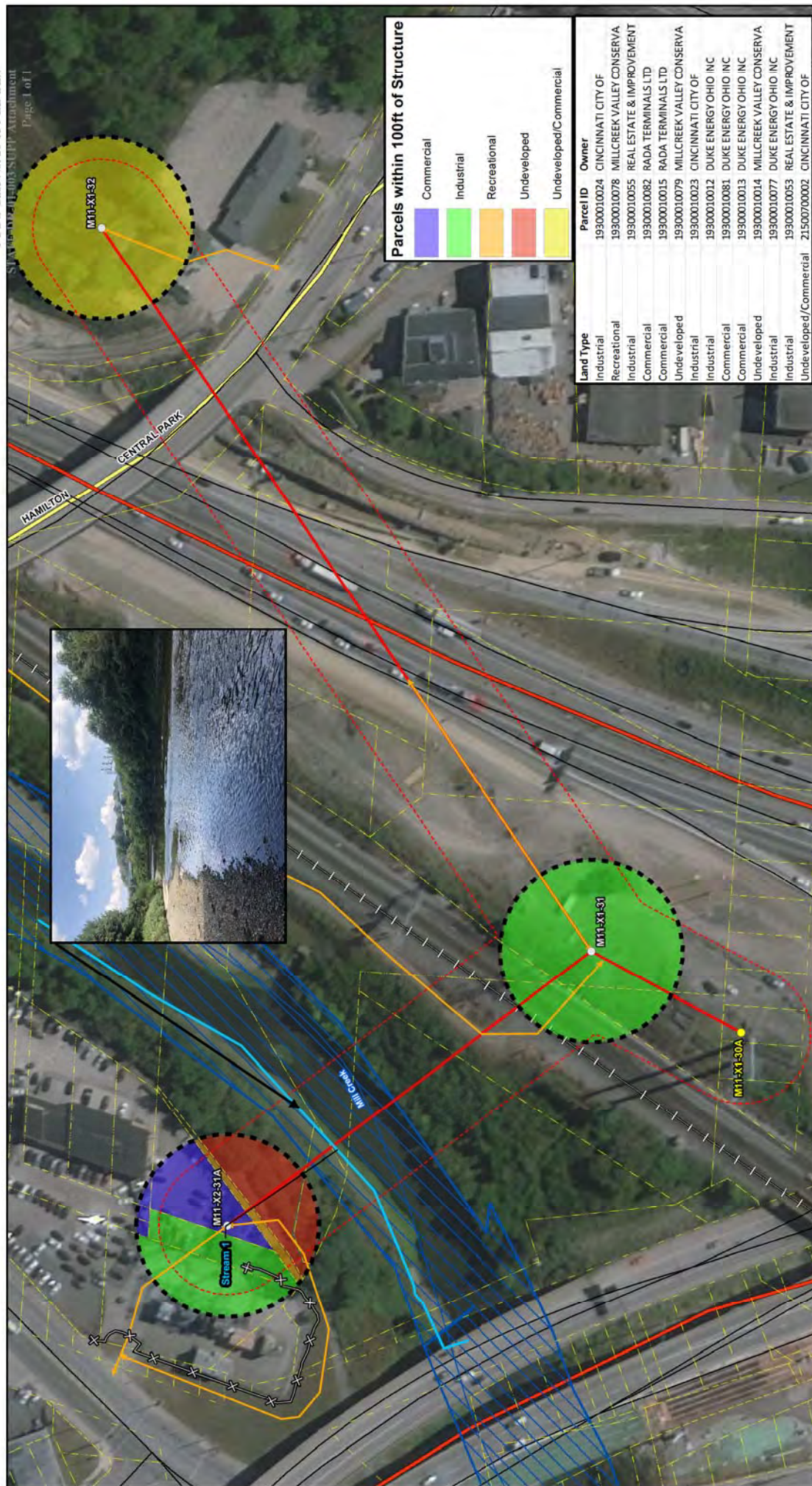
As this case is similar to the 19-1471 case, in terms of ODOT wanting you to relocate due to I-75 improvements, and in light of the residential issues we are dealing with for that one, can you lay out the proximity of the closest structures to homes?

- a. If there are any stub poles?
- b. And how you will handle complaints from residents if they have them as it relates to this project please?

**SUPPLEMENTAL RESPONSE:** Please see STAFF-DR-01-003 Attachment.

**PERSON RESPONSIBLE:** Cori Jansing / Dustin Giesler





REFERENCE: USGS 7.5 TOPOGRAPHIC QUADRANGLE CINCINNATI WEST, OHIO, OBTAINED FROM USGS, 1984. GEOGRAPHIC TOPO, AND USGS, ACCESSSED 01/2017.

PROJECT LOCATION

100-ft Buffer

Proposed Structure

Existing Structure

150-ft Corridor

Fence Line

Delineated Stream

Existing Facility

Interstate

NHD Flowline

Potential Access

State Highway

US Highway

Railroad

Project Centerline

Parcels

Municipal Boundary

NW Wetlands

DUKE ENERGY

Cardno

FIGURE 2.01  
OPSR PLAN FILING  
CUMMINSVILLE PHASE SB REBUILD PROJECT  
DUKE ENERGY OHIO  
PROXIMITY TO RESIDENTIAL HOMES MAP

Land Type	Parcel ID	Owner
Industrial	19300010024	CINCINNATI CITY OF
Recreational	19300010078	MILLCREEK VALLEY CONSERVA
Industrial	19300010055	REAL ESTATE & IMPROVEMENT
Commercial	19300010082	RADA TERMINALS LTD
Commercial	19300010015	RADA TERMINALS LTD
Undeveloped	19300010079	MILLCREEK VALLEY CONSERVA
Industrial	19300010023	CINCINNATI CITY OF
Industrial	19300010012	DUKE ENERGY OHIO INC
Commercial	19300010081	DUKE ENERGY OHIO INC
Commercial	19300010013	DUKE ENERGY OHIO INC
Undeveloped	19300010014	MILLCREEK VALLEY CONSERVA
Industrial	19300010077	DUKE ENERGY OHIO INC
Industrial	19300010053	REAL ESTATE & IMPROVEMENT
Undeveloped/Commercial	21500700002	CINCINNATI CITY OF

0 25 50 100 Feet

DRAWN BY: SKL  
CHECKED: CAJ

DATE: 5/6/2020  
APPROVED: CAJ

R:\Projects\151561\561721M\_DukeEnergy\_9183M04\_SOW59\_M19013301\_CumminsVilleSB\_BLNDE\_OPSB3\_CumminsVille\_Environmental Access Plan.mxd

**This foregoing document was electronically filed with the Public Utilities**

**Commission of Ohio Docketing Information System on**

**5/8/2020 8:13:51 AM**

**in**

**Case No(s). 20-0134-EL-BLN**

Summary: Correspondence Duke Energy Ohio, Inc.'s Supplemental Response to Staff Data Request 01-003 electronically filed by Carys Cochern on behalf of Duke Energy