



Legal Department

American Electric Power
1 Riverside Plaza
Columbus, OH 43215-2373
AEP.com

April 28, 2020

Chairman Sam Randazzo
Ohio Power Siting Board
180 East Broad Street
Columbus, Ohio 43215-3793

Christen M. Blend
Tanner S. Wolfram
Senior Counsel –
Regulatory Services
(614) 716-2914 (P)
(614) 716-1915 (P)
tswolfram@aep.com
cmblend@aep.com

**RE: Case No. 18-0033-EL-BTX
Seaman-Sardinia 138kV Transmission Line Project
Notice of Adjustments**

Dear Chairman Randazzo:

After consulting with OPSB Staff, AEP Ohio Transmission Company, Inc. (“AEP Ohio Transco”) hereby provides the following notice of adjustments to certain structures associated with the above-referenced Project.

AEP Ohio Transco is shifting Structures 7-11 on the Seaman-Sardinia 138kV Transmission Line Project to avoid impacts to an existing waterline. The structure shifts range from four to eleven feet off the centerline approved in the above-referenced case, as shown on the maps attached. Right-of-way easements have been obtained for this adjustment. The shifts do not increase environmental impacts, and an updated Storm Water Pollution Prevention Plan map is attached.

Please let me know if you have any questions or need additional information.

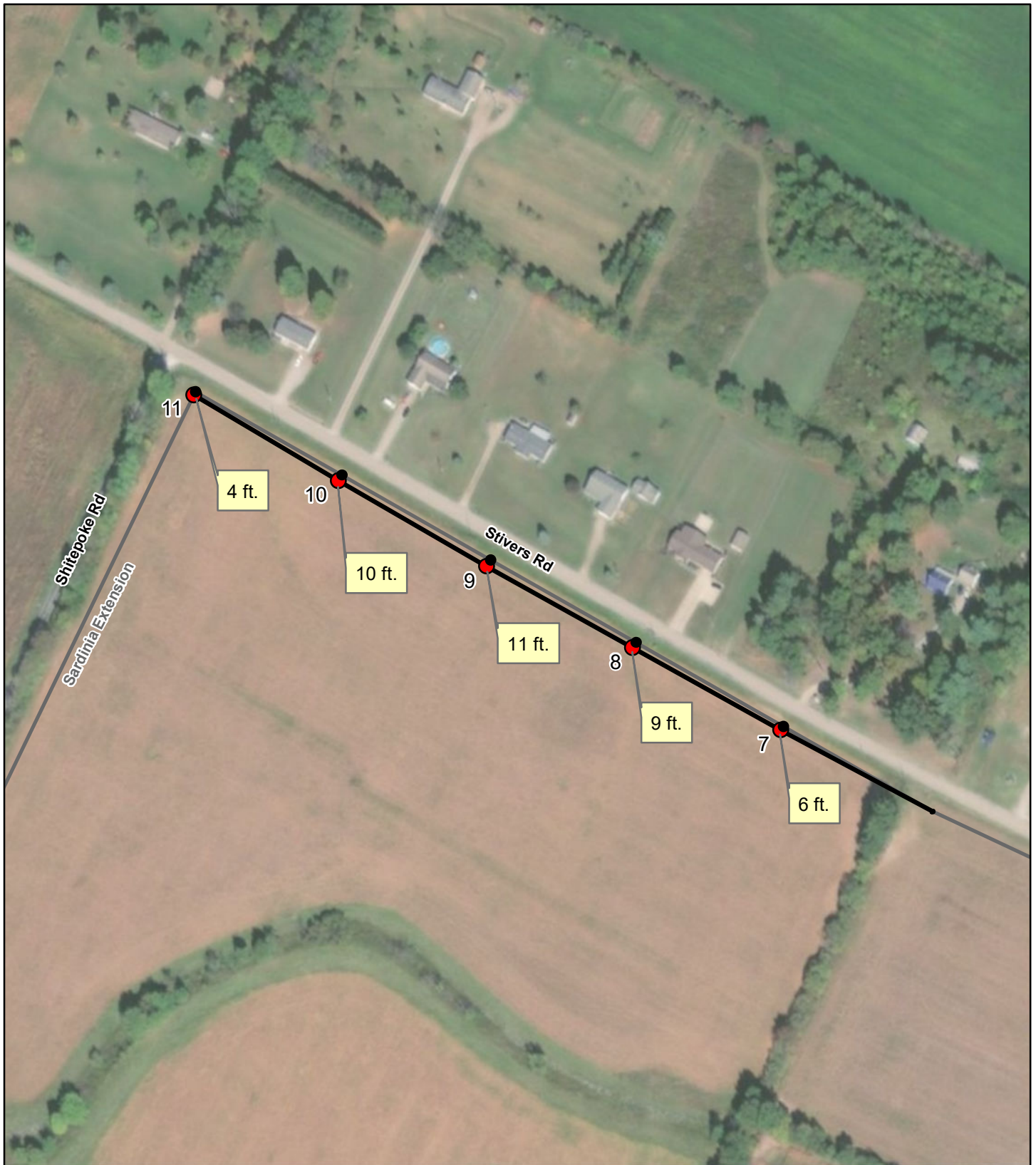
Respectfully submitted,

/s/ Tanner S. Wolfram

Christen M. Blend (0086881), Counsel of Record
Tanner S. Wolfram (0097789)

Counsel for AEP Ohio Transmission Company, Inc.

cc: Jon Pawley, OPSB Staff



LEGEND:

- Original Structures
- Shifted Structures
- Original Centerline
- Shifted Centerline

Data Sources or Notes
ESRI, 2017

Coordinate System
and Datum
NAD 83 State Plane
Ohio South, Feet



April 26, 2020

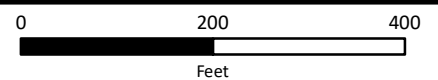
LOCATOR MAP



FIGURE 1 AERIAL MAP



Sardinia Extension (18-0033-EL-BTX)
Notice of Adjustment





NOTES:

1. Work pads should not be installed in wetlands and streams, if feasible. Concrete washouts shall not be installed in wetlands and streams.
2. ROW clearing, access road and work pad installation will require removal of vegetation and grading. Contractor to consult with AEP to determine grading and clearing requirements, work pad dimensions, and materials. Grubbing should be avoided to the extent possible.
3. No Access signs will need to be added to the orange construction fencing.
4. Access of areas outside of the existing ROW or within wetland areas is to be limited to the designated access roads as shown. No additional access routes will be used without consent from the AEP Transmission Construction Representative (TCR), AEP ROW agent, and AEP Environmental Coordinator.
5. All access roads and workpads within 15 ft. of wetlands, regulated waters, or designated sensitive areas shall be construction matted and protected from silt, stone, and other construction debris.
6. Pulling pad locations illustrated on plan maps are suggested locations; actual locations of pulling pads may be changed during construction based on site conditions or need. Revised locations must be approved by AEP TCR, AEP ROW agent, and AEP Environmental Coordinator.

Existing Features		Ecological Features		Access Road	
Existing Structure	Concrete Washout	Delineated Stream	River/Stream (National Hydrography Dataset)	Access Road Number	
Substation	Guard Structure	Delineated Pond	100-Year Floodplain	Access Road Label	
69 kV Transmission	Filter Sock	Palustrine Scrub/Shrub	Existing Access, Dirt->Gravel	Installed Material	
Parcel Boundary	Orange Barrier Fence	Palustrine Emergent	Existing Access, Gravel->Gravel	Gravel	
Proposed Structure_20200324	Timber Matting	Palustrine Forested	New Access, Vegetation->Gravel	Timber Matting	
Proposed Structure	Pulling Pad	Ground Elevation Contours (ft amsl)	New Access, Vegetation->Timber Matting	Constructed Width (ft.)	
Proposed 138 kV Transmission	Workpad			Existing Material	
TCE Point	Limit of Disturbance			Dirt	
				Vegetation	
				Change in Access Road Material	

Seaman-Sardinia
138 kV Transmission Line Construction
and 69 kV Transmission Line
Retirement Project

Projected Coordinate System: UTM Zone 17N
Datum: North American Datum - 1983
Linear Unit: Meter

BASE MAP SOURCE:
ESRI World Imagery (Clarity)

LOCATOR MAP

CREATED BY: DH
CHECKED BY: TA

SCALE 1" = 100' (1:1,200)
PAGE SIZE: 22x34 INCHES
MAP SHEET 8 OF 28

DATE: 3/24/2020
0 100 200
Scale In Feet

JACOBS
AMERICAN ELECTRIC POWER

This foregoing document was electronically filed with the Public Utilities

Commission of Ohio Docketing Information System on

4/28/2020 10:35:20 AM

in

Case No(s). 18-0033-EL-BTX

Summary: Notice Notice of Adjustments for Seaman-Sardinia 138kV Transmission Line Project electronically filed by Tanner Wolfram on behalf of AEP Ohio Transmission Company, Inc.