

# Memo

To: Docketing Division  
From: Jill Henry, Rail Specialist, Rail Division  
Cc: PUCO Legal Department  
Date: 4/6/2020

Re: PUCO Case No. 20-712-RR-FED- In the Matter of a Request for the Installation of Active Warning Devices at the RJ Corman Railroad Crossing, St Anthony Road/CR 110 DOT#477-034N in Mercer County, Ohio.

---

On November 18, 2019, the Ohio Rail Development Commission (ORDC) authorized funding for RJ Corman Railroad to install lights and gates at St Anthony Road/CR 110 DOT#477-034N in Mercer County, Ohio. The crossing was surveyed, on July 12, 2019, and found to warrant the upgrades. The electric utility provider for the crossing is Dayton Power and Light.

The project will be paid for with federal funds and is actual cost. The plans and estimates for the project in the amount of \$192,253.90 have been approved. Construction may commence at once. **Staff requests a Finding & Order with completion of the project in nine months.** Staff requests that the following language be incorporated in the Finding & Order:

**It is expected that all work necessary for FHWA acceptance of the warning devices will be completed by the in-service due date and that the railroad will be responsible for this work. This work includes, but is not limited to:**

- Any ancillary work to make the warning devices function as designed and visible to the roadway user, and
- MUTCD compliance, including minor roadway work if necessary.

**Please serve the following parties of record:**

RJ Corman Railroad  
James Kelley  
Funded Projects Coordinator  
P.O. Box 788  
101 RJ Corman Drive  
Nicholasville, KY 40356

RJ Corman Railroad  
Deborah Hawley  
Funded Projects Coordinator  
P.O. Box 788  
101 RJ Corman Drive  
Nicholasville, KY 40356

Ohio Rail Development Commission  
Cathy Stout  
Safety Manager  
1980 West Broad Street  
Mail Stop #3140  
Columbus, OH 43223

Mercer County Engineer  
Jim Wiechart  
County Engineer  
4884 Mud Pike  
Celina, OH 45822

Dayton Power and Light

**OHIO RAIL DEVELOPMENT COMMISSION  
INTER-OFFICE COMMUNICATION**

**TO:** Randall Schumacher, Chief, Motor Carrier & Rail Enforcement, PUCO

**FROM:** Cathy Stout, Manager, Safety Section, ORDC

**BY:** Don Damron

**SUBJECT:** Mercer County, CR 110, St. Anthony Rd.  
DOT# 477034N  
PID# 111127  
RJC MP 123.12

**DATE:** March 31, 2020

---

The Public Utilities Commission of Ohio (PUCO) established a diagnostic survey at the subject location on 7/12/2019. The Ohio Rail Development Commission (ORDC) attended the review. The Diagnostic Team recommended the improvement of warning devices to flashing lights and roadway gates. Copies of the diagnostic review form and the plan and estimate are attached.

The plans and estimate have already been provided by the railroad. ORDC accepts the site plan and estimate as provided. Please issue a construction-only order for the project outlined above. This authorization is made with the stipulation and understanding that an approved estimate may contain entries for items or activities that may be cited and found to be ineligible for federal participation during the project audit.

It is expected that all work necessary for FHWA acceptance of the warning devices will be completed by the in-service due date and that the railroad will be responsible for this work. This work includes, but is not limited to:

- any ancillary work to make warning devices function as designed and visible to the roadway user, and
- MUTCD compliance – including minor roadway work if necessary.

Thank you for your assistance with these matters.

Attachment: Construction Authorization  
Diagnostic Review Team Survey form  
RJC Plan, Estimate and Material Lists  
PE Authorization  
PUCO Letter Agreement  
State of Ohio Purchase Order

c: Jill Henry, Rail Division Specialist, PUCO  
ORDC Project Manager (file)



## Rail Development Commission

Mike DeWine, Governor  
Jon Husted, Lt. Governor

Mark Policinski, Chair

March 31, 2020

Ms. Deborah J. Hawley  
Real Estate & Funded Projects Manager  
R. J. Corman Railroad Group  
PO Box 788, 101 RJ Corman Dr  
Nicholasville, KY 40340

RE: Construction Authorization for Grade Crossing Warning Device Upgrade  
RJ Corman Railroad Company / Western Ohio Lines  
Mercer County, CR 110, St. Anthony Rd.; DOT# 477034N  
PID# 111127  
RJC MP 123.12

Dear Ms. Hawley:

The plan and estimate dated 2/24/2020, for the referenced project has been reviewed and is acceptable. R.J. Corman Railroad Group may proceed with the construction of the proposed grade crossing warning system in accordance with the abbreviated plan.

The estimate of \$192,253.90 is acceptable and reimbursement is limited to \$192,253.90. This authorization is made with the stipulation and understanding that the approved estimate may contain entries for items or activities that may be cited and found to be ineligible for federal participation during the project audit. Additional costs must be approved in writing by the Ohio Rail Development Commission (ORDC) prior to being incurred. Emergency verbal authorizations by ORDC may be permitted and will be confirmed by ORDC in writing within ten (10) business days of the verbal approval.

This authorization is contingent upon R.J. Corman Railroad Group accepting the following instructions:

1. R. J. Corman Railroad Group's project foreman will furnish written notification five (5) working days prior to the date work will start at the project site to Don Damron, ORDC, email: [don.damron@dot.ohio.gov](mailto:don.damron@dot.ohio.gov), cell: 614-917-8466, and to the Public Utilities Commission of Ohio at [Jill.henry@puc.state.oh.us](mailto:Jill.henry@puc.state.oh.us). R. J. Corman Railroad Group's project foreman will also notify the same of any stops and re-starts of the work activity and of the date work was completed for the project.
2. R. J. Corman Railroad Group will arrange for utilities to be located at the project site by the Ohio Utilities Protection Service (OUPS) prior to any construction activities at the site. Utilities that are not participating members of the service must be contacted directly by R. J. Corman Railroad Group.

3. R. J. Corman Railroad Group's project foremen will notify Don Damron at 614-917-8466 (cell) or [don.damron@dot.ohio.gov](mailto:don.damron@dot.ohio.gov) (email) of any changes in the scope of work, cost overruns, material changes, etc. which are not included in the approved plan and estimate and secure approval of same before the work is performed.
4. Open cut of roadways is *not permitted* except in unusual circumstances and must be coordinated with the local highway authority and preapproved by ORDC.
5. R. J. Corman Railroad Group will furnish two (2) copies of each partial bill to ORDC. Please find the enclosed ODOT Purchase Order to reference when billing.
6. R. J. Corman Railroad Group will furnish two (2) copies of the final all-inclusive bill to ORDC stating the exact dates of starting and completing work, the initial and final dates of construction and location where the accounts may be audited.
7. This installation will include any ancillary work to make the warning devices function as designed and meet MUTCD.

Thank you for your assistance with these matters.

Sincerely,



Project Manager

C: Randall Schumacher, Chief, Motor Carrier & Rail Enforcement, PUCO  
Jill Henry, Rail Specialist, PUCO  
Heather Hamilton, ORDC  
ORDC (file)





# RJ Corman Railroad Group



A Limited Liability Holding Company  
101 RJ Corman Drive • PO Box 788 • Nicholasville, KY 40340-0788  
(859) 881-7521 • Fax: (859) 885-7804 • [www.rjcorman.com](http://www.rjcorman.com)

2/24/2020

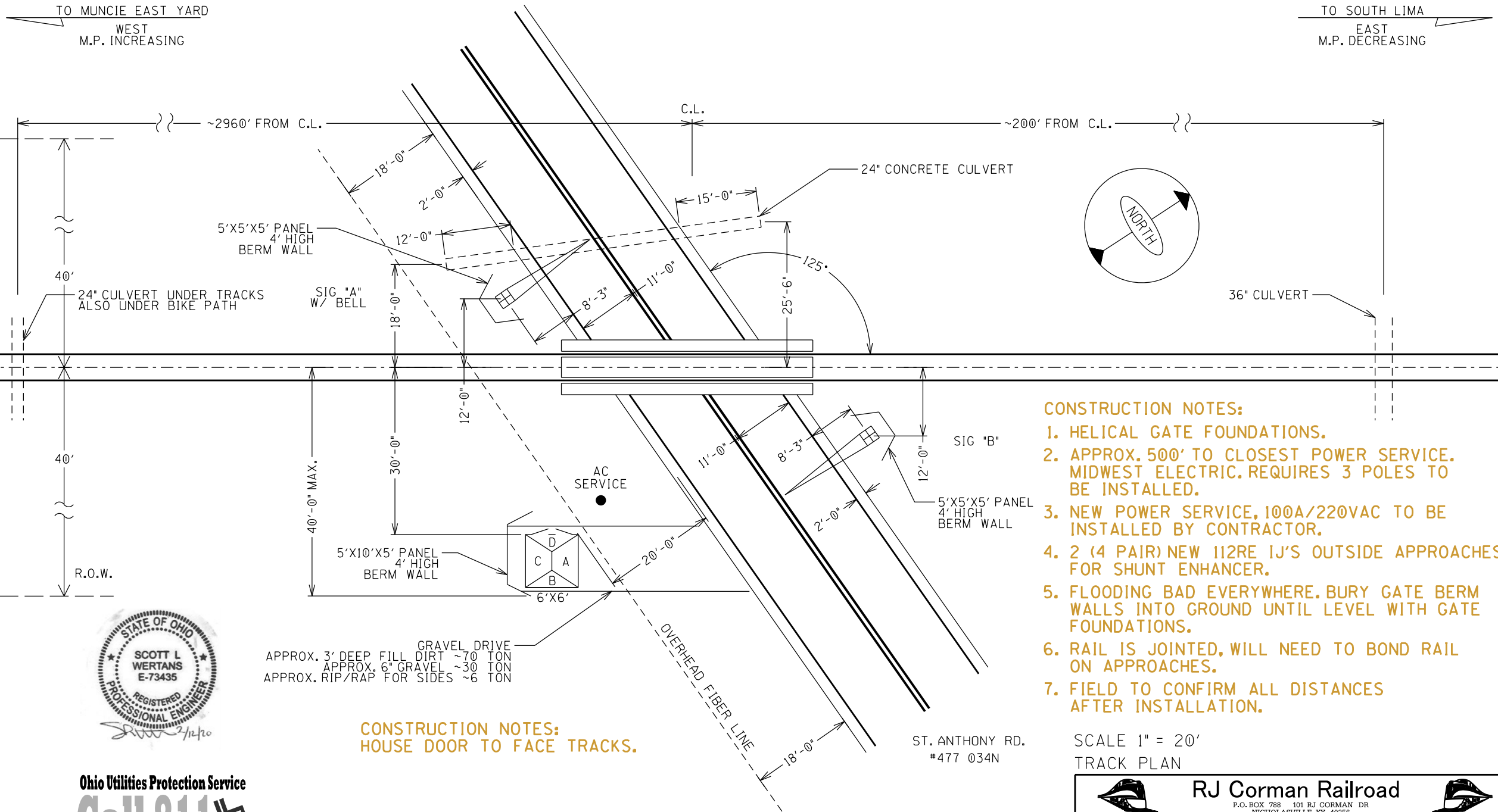
## RJ Corman Railroad Company / Western Ohio Lines

**County:** Mercer  
**Location:** St. Anthony Road / CR110  
**DOT #:** 477034N  
**MP:** 123.12

### Estimate for Signal Warning System & Installation



Materials	Qty.	Description	Extension
	1	Signal Materials	\$ 113,481.18
	1	Freight	\$ 1,035.00
	1	Power Service	\$ 11,500.00
	1	Road Bore and Conduit Install	\$ 6,000.00
	1	Miscellaneous Materials	\$ 500.00
	30 tons	Rock for Backfill	\$ 1,500.00
Labor		Description	Extension
	1	Engineering	\$ 6,104.10
	1	Shop Wiring/Test	\$ 4,956.40
	1	Field Installation (Equipment Included)	\$ 44,297.22
	1	Railroad Inspector	\$ 1,430.00
	1	Mobilization/Demobilization	\$ 1,450.00
<b>Project Total</b>			<b><u>\$ 192,253.90</u></b>





- CONSTRUCTION NOTES:**
1. HELICAL GATE FOUNDATIONS.
  2. APPROX. 500' TO CLOSEST POWER SERVICE. MIDWEST ELECTRIC. REQUIRES 3 POLES TO BE INSTALLED.
  3. NEW POWER SERVICE, 100A/220VAC TO BE INSTALLED BY CONTRACTOR.
  4. 2 (4 PAIR) NEW 112RE 1J'S OUTSIDE APPROACHES FOR SHUNT ENHANCER.
  5. FLOODING BAD EVERYWHERE. BURY GATE BERM WALLS INTO GROUND UNTIL LEVEL WITH GATE FOUNDATIONS.
  6. RAIL IS JOINTED, WILL NEED TO BOND RAIL ON APPROACHES.
  7. FIELD TO CONFIRM ALL DISTANCES AFTER INSTALLATION.

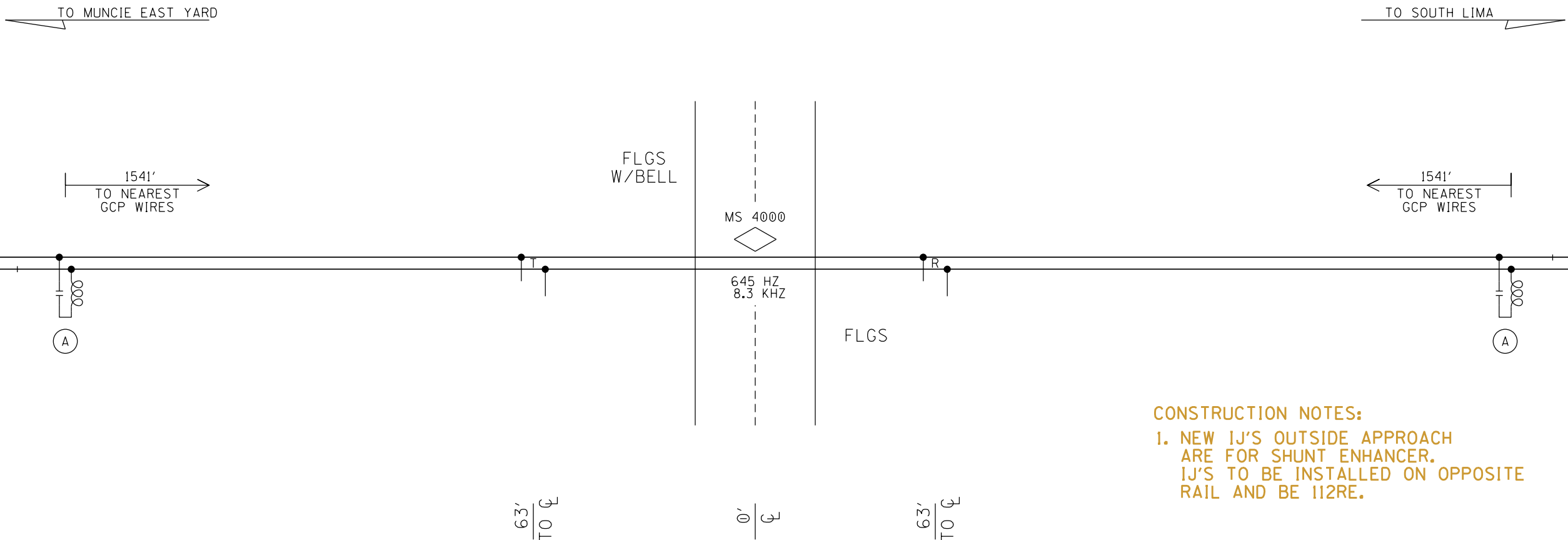
SCALE 1" = 20'  
TRACK PLAN

 <p>DESIGNED BY: MGH DIGITIZED BY: RJC CHECKED BY: RWM REV 01</p>	<p><b>RJ Corman Railroad</b> P.O. BOX 788 101 RJ CORMAN DR NICHOLASVILLE, KY 40356</p> <p>ST. ANTHONY RD. COLDWATER, OH M.P. 123.12 D.O.T. 477-034N ST. MARYS SUBDIVISION</p>	 <p>DATE: 01/24/20 FILE: ST12312.01 SHEET 01</p>
--	---	---



Ohio Utilities Protection Service  
**Call 811**  
before you dig

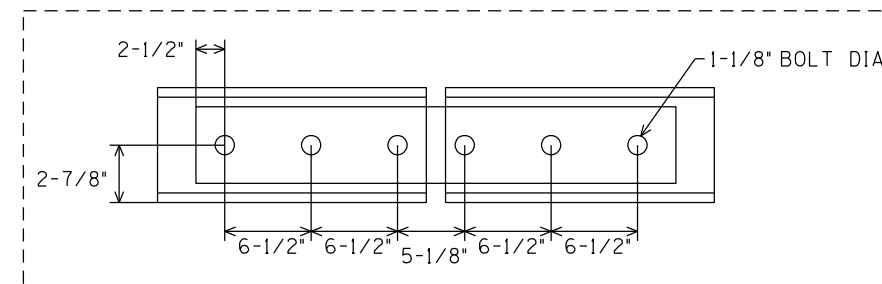




CONSTRUCTION NOTES:

1. NEW IJ'S OUTSIDE APPROACH ARE FOR SHUNT ENHANCER. IJ'S TO BE INSTALLED ON OPPOSITE RAIL AND BE I12RE.

IJ MEASUREMENTS FOR REFERENCE:





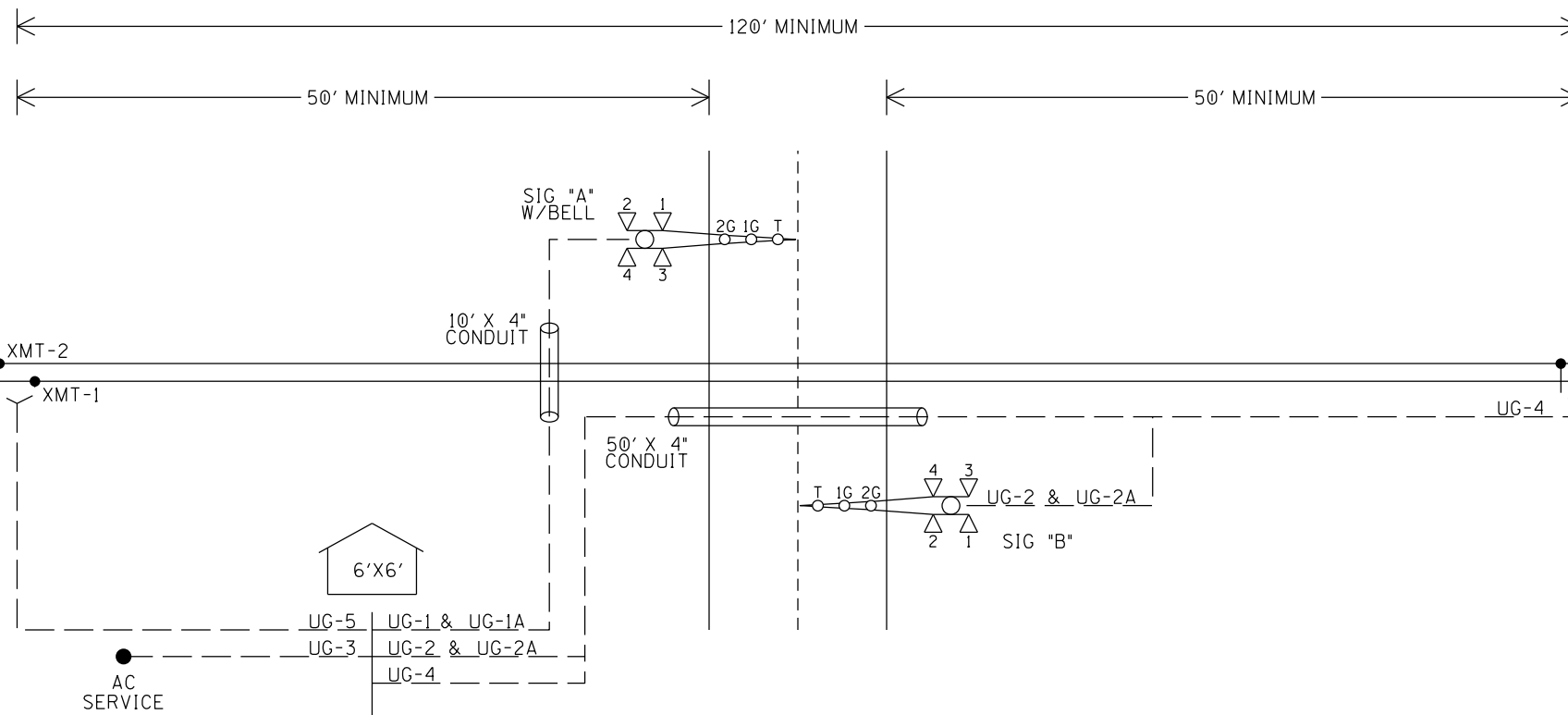
(A) — NBS-1 62775-3497 (645HZ)

Ohio Utilities Protection Service  
**Call 811**  
before you dig



PROFILE

		<b>RJ Corman Railroad</b> P.O. BOX 788 101 RJ CORMAN DR NICHOLASVILLE, KY 40356			
DESIGNED BY: MGH		ST. ANTHONY RD.		DATE: 01/24/20	
DIGITIZED BY: RJC		COLDWATER, OH		FILE: ST12312.02	
CHECKED BY: RWM		M.P. 123.12 D.O.T. 477-034N		SHEET 02	
REV 01		ST. MARYS SUBDIVISION			





UG-1-7CUG #6	UG-2-7CUG #6	UG-3-3CUG #2 W/#6 GND	UG-4-TW, PR. #6
AEC2-4 ACOM AEB1-3 ABX-B12 ABX-N12 SPARE 1 SPARE 2	BEC2-4 BCOM BEB1-3 BXB-B12 BXB-N12 SPARE 1 SPARE 2	L1 L2 NEUTRAL GROUND	RCV-1 RCV-2
UG-1A-7CUG #14	UG-2A-7CUG #14	UG-5-TW, PR. #6	XMT-1 XMT-2
AGC ABELL A-BGP ABX24 ANX24 SPARE 1 SPARE 2	BGC A-BGP GP BBX24 BNX24 SPARE 1 SPARE 2		



Ohio Utilities Protection Service  
**Call 811**  
 before you dig

# TRACK LAYOUT

		<b>RJ Corman Railroad</b> P.O. BOX 788 101 RJ CORMAN DR NICHOLASVILLE, KY 40356		
DESIGNED BY: MGH	ST. ANTHONY RD.		DATE: 01/24/20	
DIGITIZED BY: RJC	COLDWATER, OH		FILE: ST12312.03	
CHECKED BY: RWM	M.P. 123.12	D.O.T. 477-034N	SHEET 03	
REV 01	ST. MARYS SUBDIVISION			

NOTES  
1) CIRCUIT BREAKER NOT TO EXCEED 100 AMPERES.

2) FEEDER CIRCUIT BREAKER AT STUB POLE SERVICE PANEL NOT TO EXCEED 100 AMPERES

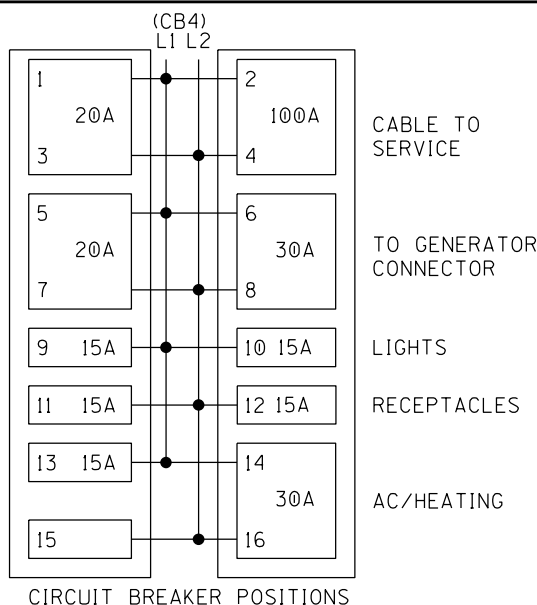
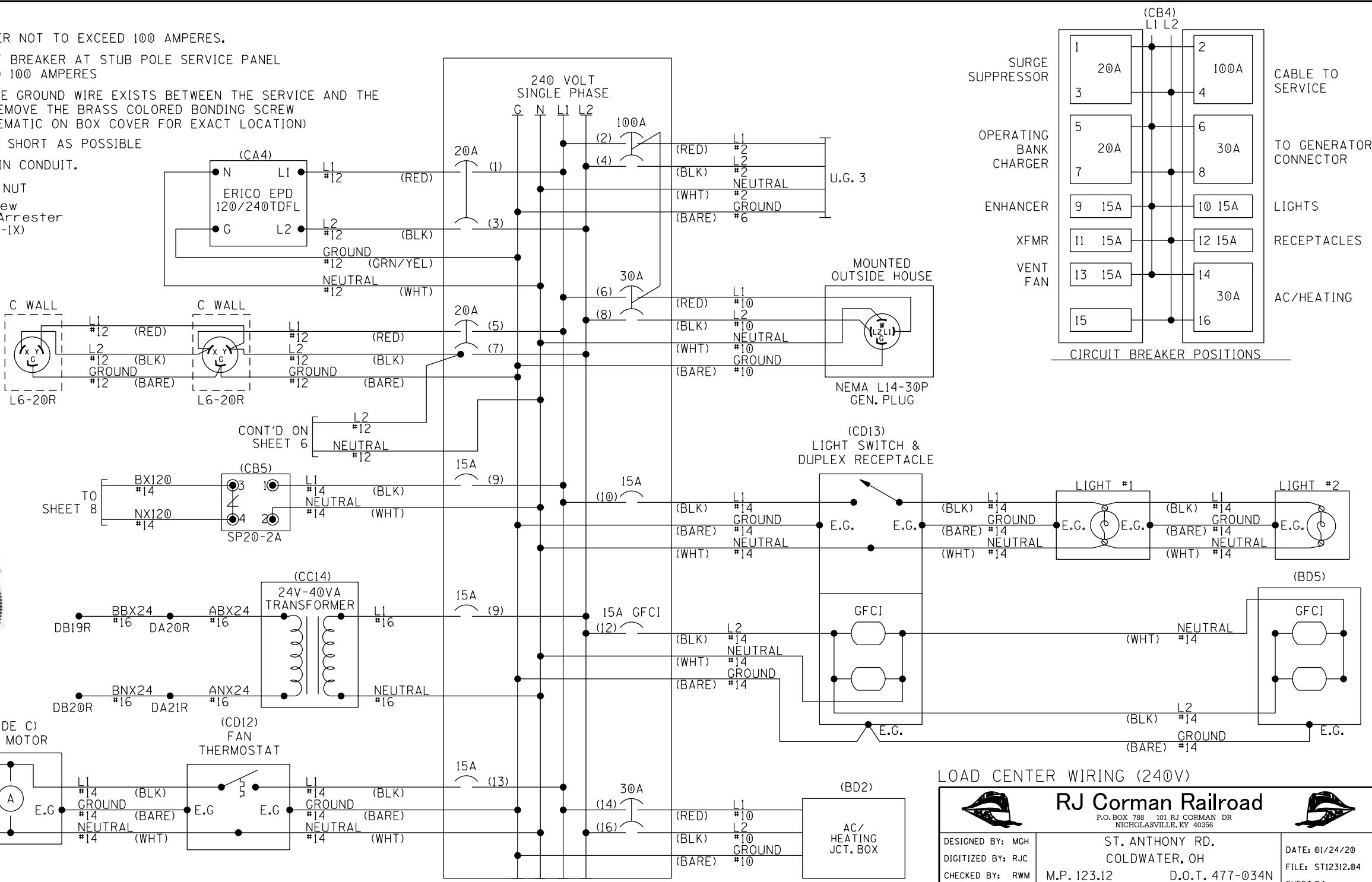
3) WHERE SEPARATE GROUND WIRE EXISTS BETWEEN THE SERVICE AND THE LOAD CENTER, REMOVE THE BRASS COLORED BONDING SCREW (REFER TO SCHEMATIC ON BOX COVER FOR EXACT LOCATION)

4) KEEP LEADS AS SHORT AS POSSIBLE

5) ALL AC WIRES IN CONDUIT.

● = INSULATED NUT

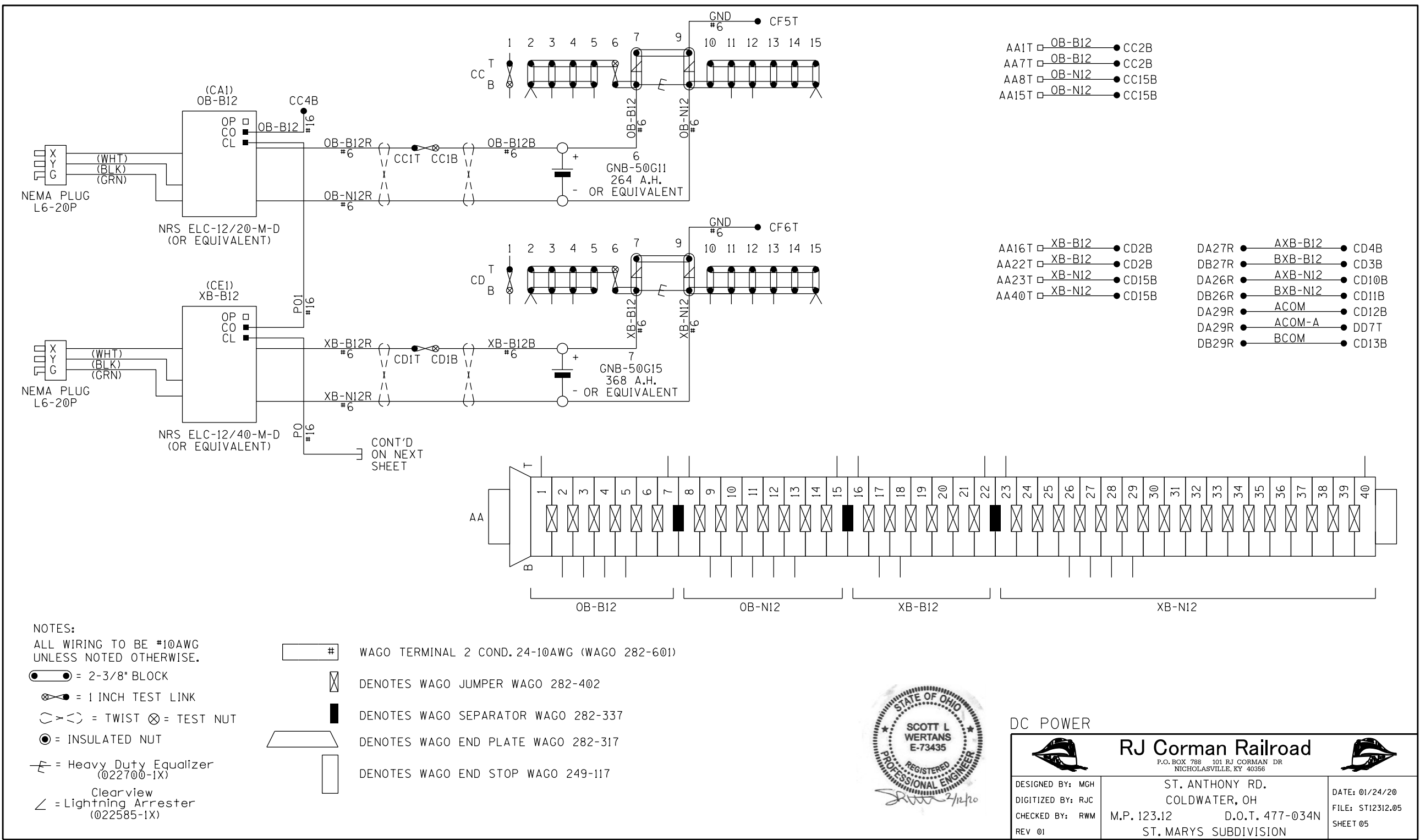
Clearview  
∠ = Lightning Arrester  
(022585-1X)



LOAD CENTER WIRING (240V)

**RJ Corman Railroad**  
P.O. BOX 788 101 RJ CORMAN DR  
NICHOLASVILLE, KY 40356

DESIGNED BY: MGH	ST. ANTHONY RD.	DATE: 01/24/20
DIGITIZED BY: RJC	COLDWATER, OH	FILE: ST12312.04
CHECKED BY: RWM	M.P. 123.12	D.O.T. 477-034N
REV 01	ST. MARYS SUBDIVISION	SHEET 04



- AA1T □ OB-B12 ● CC2B
- AA7T □ OB-B12 ● CC2B
- AA8T □ OB-N12 ● CC15B
- AA15T □ OB-N12 ● CC15B

- AA16T □ XB-B12 ● CD2B
- AA22T □ XB-B12 ● CD2B
- AA23T □ XB-N12 ● CD15B
- AA40T □ XB-N12 ● CD15B

- DA27R ● AXB-B12 ● CD4B
- DB27R ● BXB-B12 ● CD3B
- DA26R ● AXB-N12 ● CD10B
- DB26R ● BXB-N12 ● CD11B
- DA29R ● ACOM ● CD12B
- DA29R ● ACOM-A ● DD7T
- DB29R ● BCOM ● CD13B

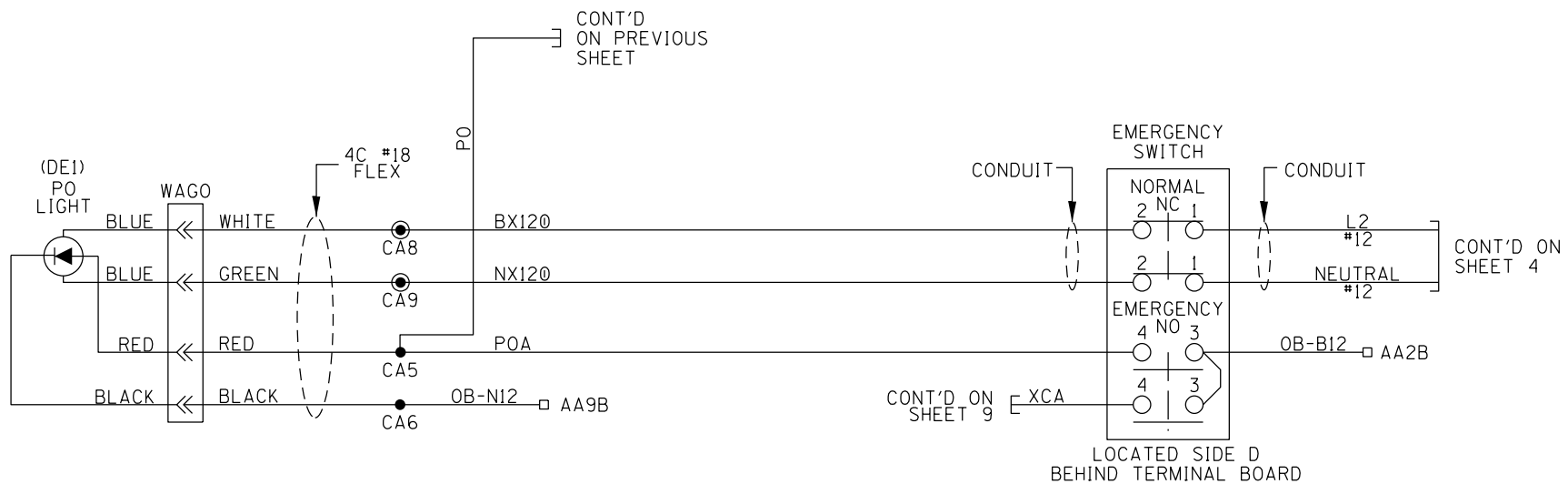
NOTES:  
ALL WIRING TO BE #10AWG  
UNLESS NOTED OTHERWISE.  
● = 2-3/8" BLOCK  
⊗ = 1 INCH TEST LINK  
⌢ > ⌢ = TWIST ⊗ = TEST NUT  
● = INSULATED NUT  
⚡ = Heavy Duty Equalizer  
(022700-1X)  
⌢ = Clearview  
⌢ = Lightning Arrestor  
(022585-1X)

- # WAGO TERMINAL 2 COND. 24-10AWG (WAGO 282-601)
- ⌢ DENOTES WAGO JUMPER WAGO 282-402
- DENOTES WAGO SEPARATOR WAGO 282-337
- ⌢ DENOTES WAGO END PLATE WAGO 282-317
- ⌢ DENOTES WAGO END STOP WAGO 249-117



DC POWER

					
<b>RJ Corman Railroad</b> P.O. BOX 788 101 RJ CORMAN DR NICHOLASVILLE, KY 40356					
DESIGNED BY: MGH		ST. ANTHONY RD.		DATE: 01/24/20	
DIGITIZED BY: RJC		COLDWATER, OH		FILE: ST12312.05	
CHECKED BY: RWM		M.P. 123.12 D.O.T. 477-034N		SHEET 05	
REV 01		ST. MARYS SUBDIVISION			





NOTES:  
1. ALL WIRING TO BE #16AWG  
UNLESS NOTED OTHERWISE.

● = INSULATED NUT



## PO LIGHT CIRCUIT

	<b>RJ Corman Railroad</b> <small>P.O. BOX 788 101 RJ CORMAN DR NICHOLASVILLE, KY 40356</small>	
DESIGNED BY: MGH DIGITIZED BY: RJC CHECKED BY: RWM REV 01	ST. ANTHONY RD. COLDWATER, OH M.P. 123.12 D.O.T. 477-034N ST. MARYS SUBDIVISION	DATE: 01/24/20 FILE: ST12312.06 SHEET 06

MAIN PROGRAM MENU

**	PARAMETER	VALUE
1	TEMPLATE	↓ MTF-MS MOTION SENSOR
1A	SET TEMPLATE DEFAULTS	(YES ON INITIAL SETUP)
MS 4000 CONFIGURATION		
2	APPR FREQUENCY	↓ 645 HZ
3	APPR TRANSMIT LEVEL	# ☆ HIGH
4	UNI/BI/SEM-BIDIRNL	↓ BIDIRNL
5	DIRECTIONALLY WIRED	↓ ☆ NO
6	MS PICKUP DELAY	↓ ☆ 15 SEC
7	UAX USED	↓ YES
7A	* PRIME UAX PICKUP	↓ ☆ 5 SEC
8	ISLAND USED	↓ ☆ INTERNAL
8A	* ISL FREQUENCY	↓ 8.3 KHZ
8B	* ISL PICKUP DELAY	↓ (2s+) 3 SECONDS
9	IN 1.1	↓ UAX
10	IN 1.2	↓ NOT USED
11	PRIME MS/GCP MODE	↓ PRED
11A	* PRIME WARNING TIME	↓ 30 SEC
ADVANCED		
12	POSITIVE START	↓ ☆ OFF
13	SUDDEN SHUNT DET USED	↓ ☆ NO
14	LOW EZ DET USED	↓ ☆ NO
15	MS SENSITIVITY LEVEL	# ☆ 36
16	COMPENSATION LEVEL	# ☆ 1300
17	LOW EX ADJUSTMENT	# ☆ 39
18	INBOUND PS SENSITIVITY	# ☆ HIGH
19	SPEED LIMITING USED	# ☆ YES
20	OUTBOUND FALSE ACT LVL	# ☆ NORMAL
OTHER		
21	OOS TIMEOUT	# ☆ 1 HRS
22	DAYLIGHT SAVINGS TIME	# ☆ ON
23	EZ/EX LOGGING	# ☆ CHANGE
24	EZ/EX POINT CHANGE	# ☆ 3
25	ATCS SITE ID	↓ ☆ 762010010016

CONTINUE MAIN PROGRAM MENU

**	PARAMETER	VALUE
26	LOCATION	
26A	* DOT NUMBER	# 477 034N
26B	* MILE POST	# 123.12
26C	* SITE NAME	# ST ANTHONY RD

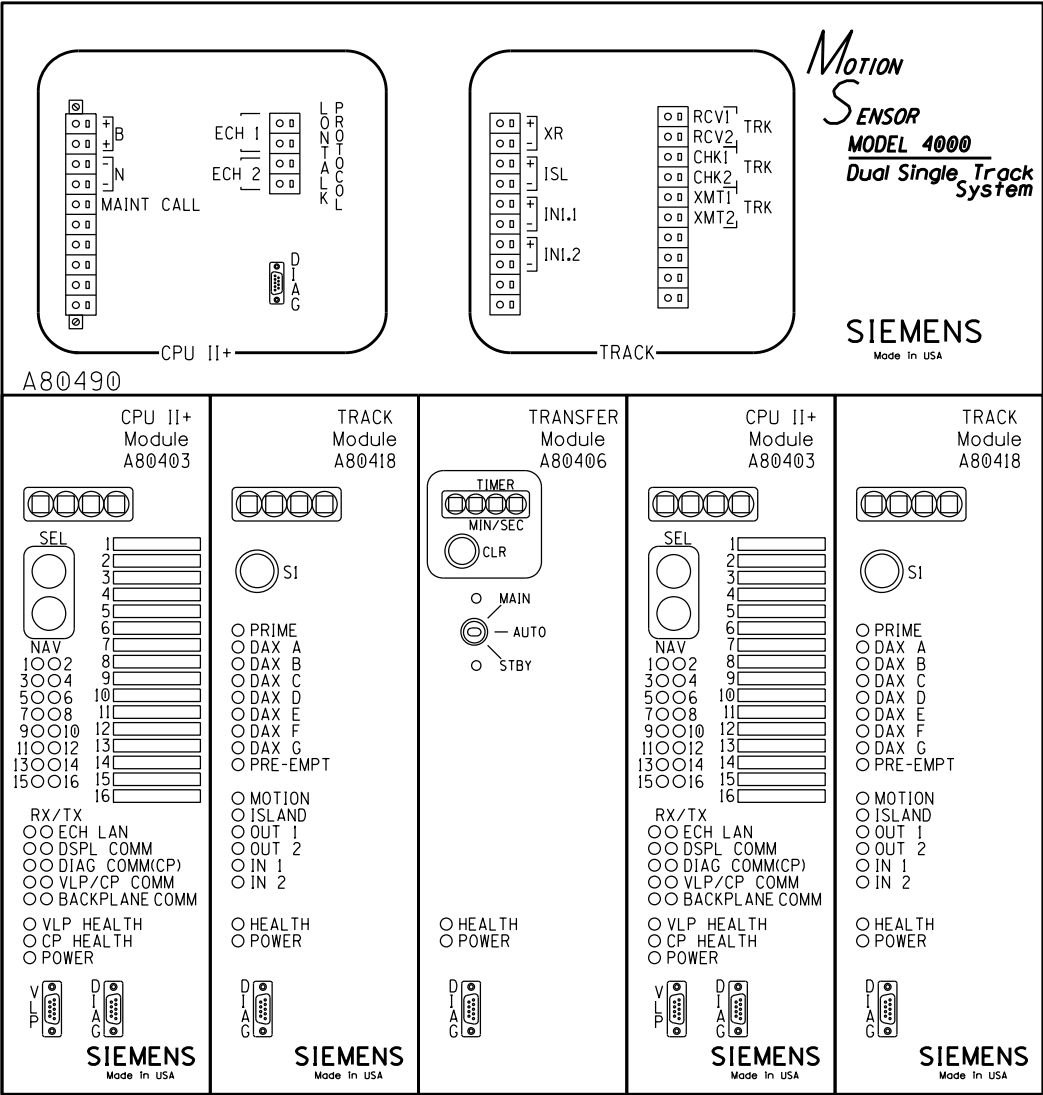
MCF AND OCCN

MCF NAME	GCP-T6X-02-9.mcf
OCCN	7A87DD75




NOTES:

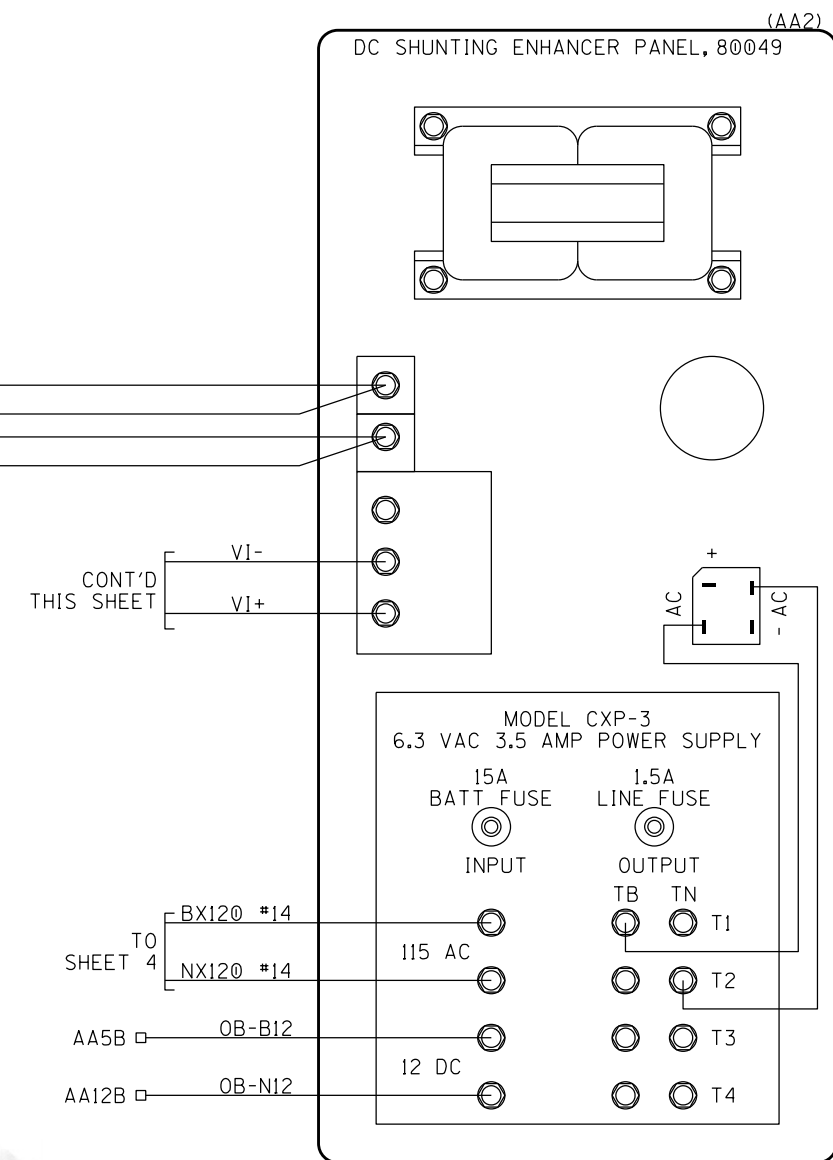
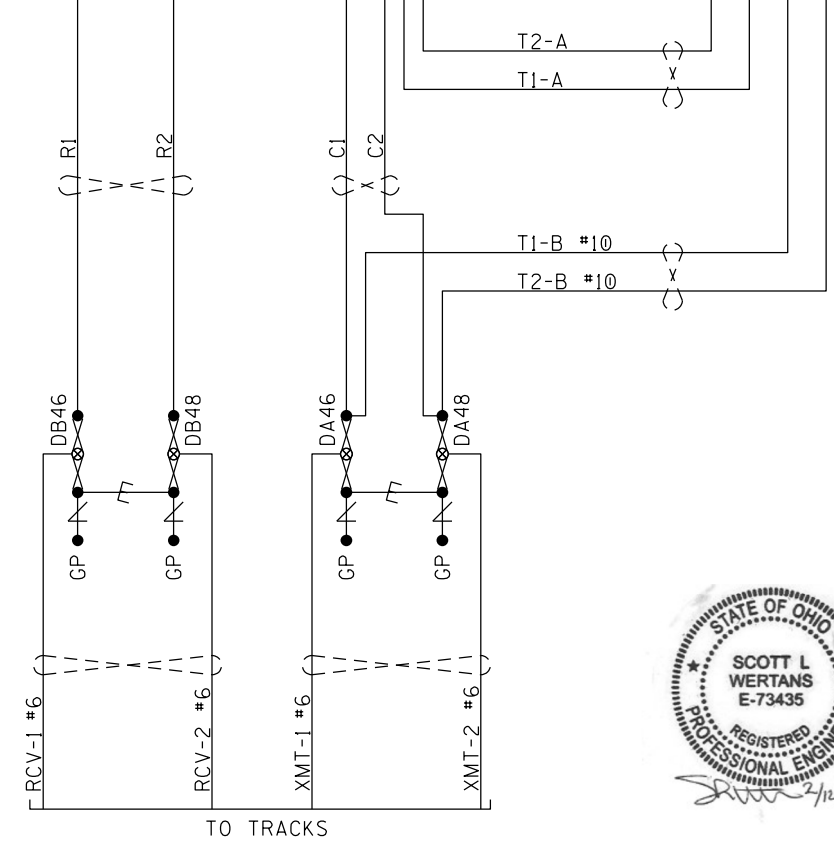
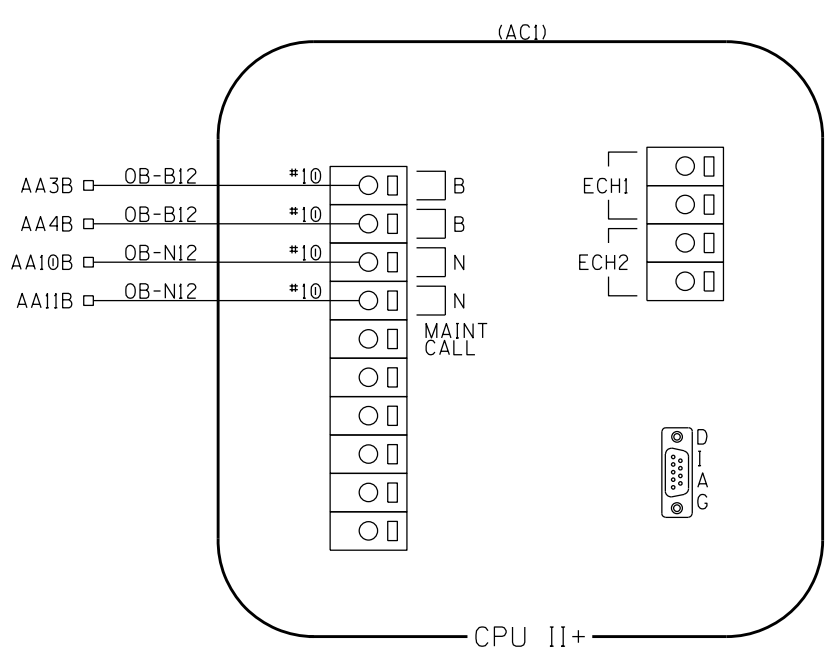
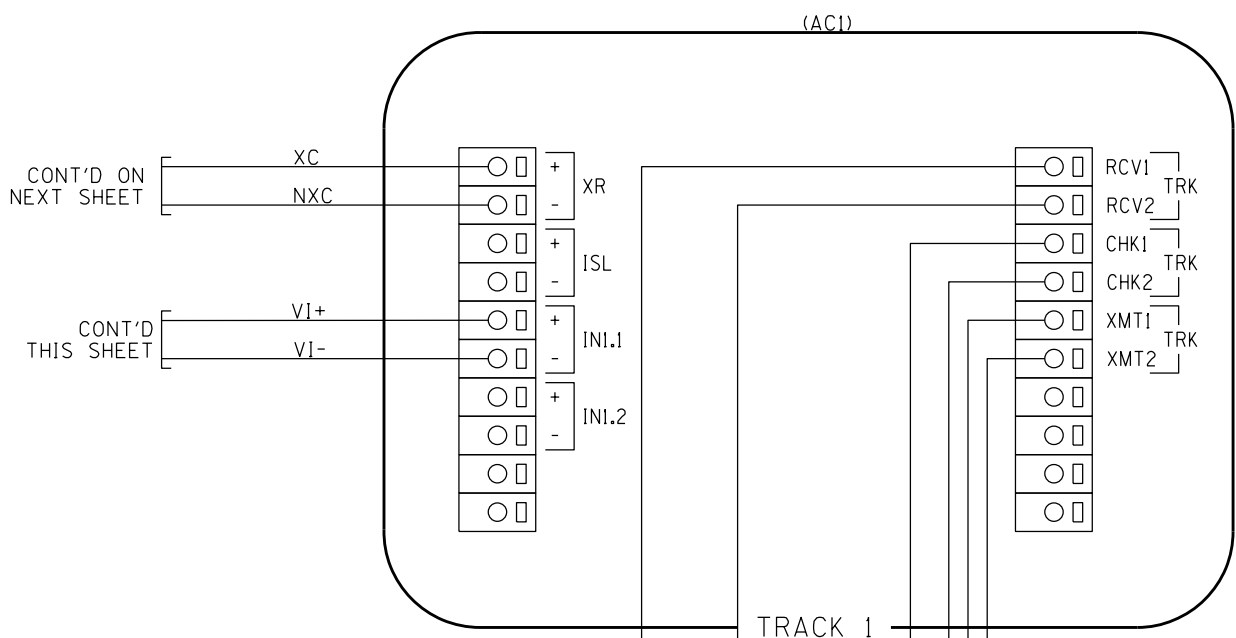
1. \* AVAILABLE WHEN PRIOR PARAMETER SELECTED
2. # SET BY FIELD AS REQUIRED
3. ☆ DEFAULT SETTING
4. ↓ IMPACTS OCCN
5. \*\* STEP SEQUENCE WHEN USING DIAGNOSTIC TERMINAL (DT) VER. 5.7.3 TO SET PROGRAM PARAEMTERS. ALPHA NUMERIC STEPS ARE SUB MENUS OF PREVIOUS STEP.



(AC1)

MS 4000 GCP

 <b>RJ Corman Railroad</b> P.O. BOX 788 101 RJ CORMAN DR NICHOLASVILLE, KY 40356		
DESIGNED BY: MGH DIGITIZED BY: RJC CHECKED BY: RWM REV 01	ST. ANTHONY RD. COLDWATER, OH M.P. 123.12 D.O.T. 477-034N ST. MARYS SUBDIVISION	DATE: 01/24/20 FILE: ST12312.07 SHEET 07



NOTES:

ALL WIRING TO BE #16AWG UNLESS NOTED OTHERWISE.

⚡ = Heavy Duty Equalizer (022700-1X)

⚡ = Clearview Lightning Arrestor (022585-1X)



⊗ = TEST LINK

⊗ = TEST NUT

⌢ > ⌢ = TWIST



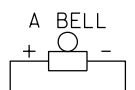
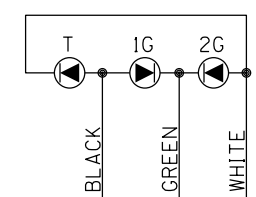
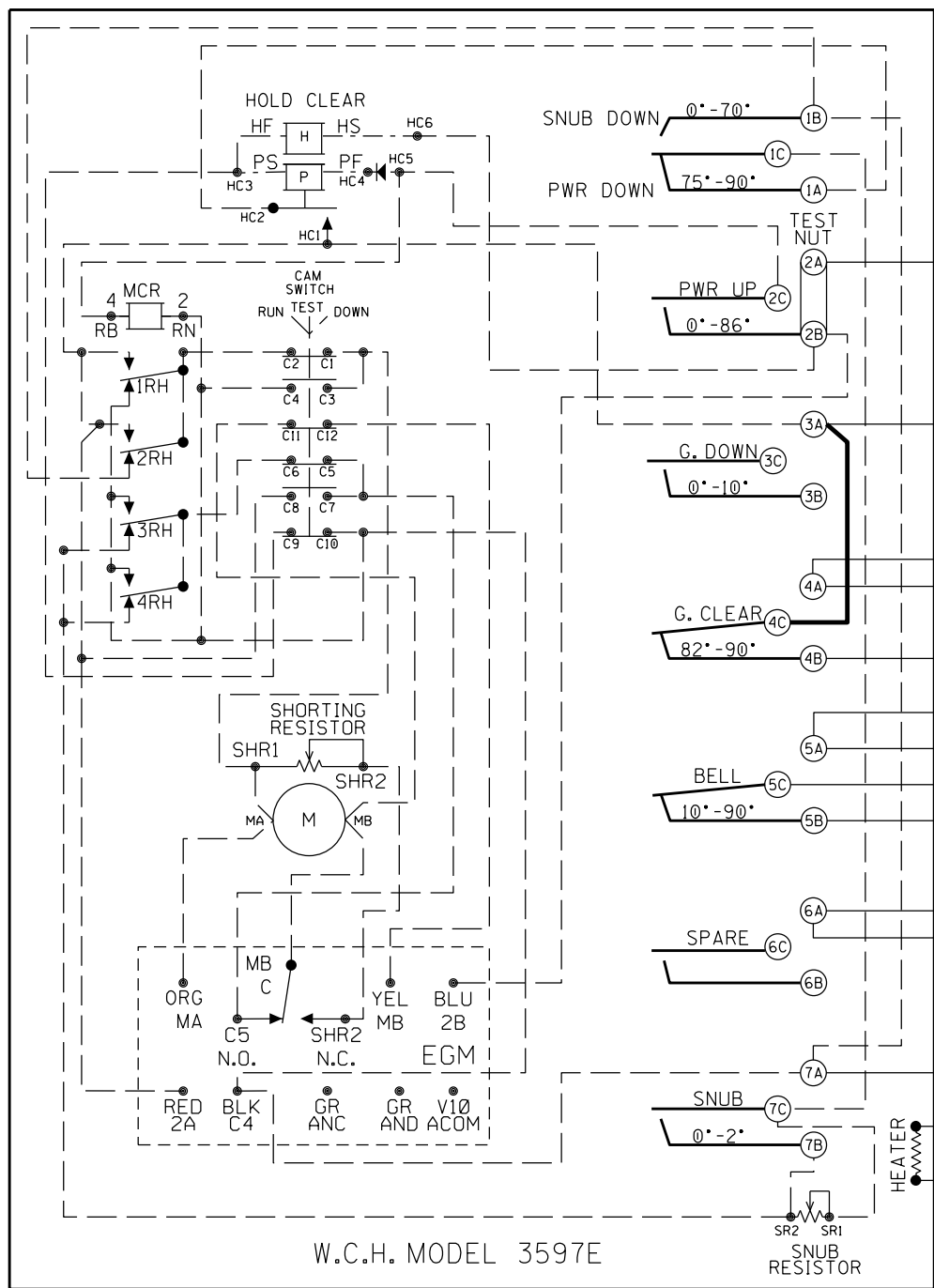
TRACK CONNECTIONS

					
<b>RJ Corman Railroad</b>			<b>RJ Corman Railroad</b>		
P.O. BOX 788 101 RJ CORMAN DR NICHOLASVILLE, KY 40356			P.O. BOX 788 101 RJ CORMAN DR NICHOLASVILLE, KY 40356		
ST. ANTHONY RD. COLDWATER, OH			ST. ANTHONY RD. COLDWATER, OH		
M.P. 123.12			D.O.T. 477-034N		
ST. MARYS SUBDIVISION			ST. MARYS SUBDIVISION		
DESIGNED BY: MGH	CHECKED BY: RWM	REV 01	DATE: 01/24/20	FILE: ST12312.08	SHEET 08

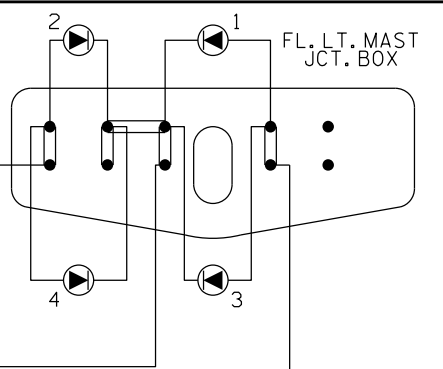
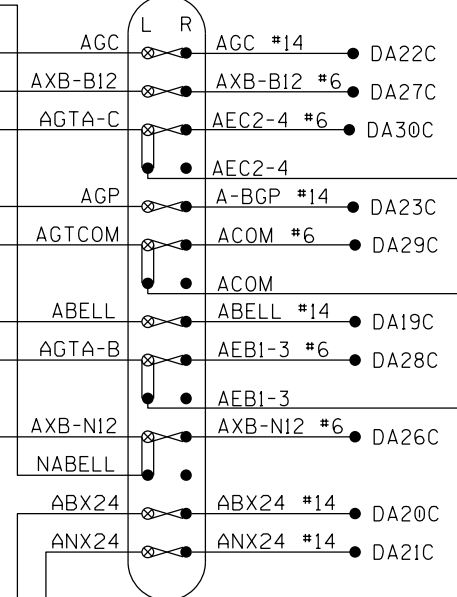




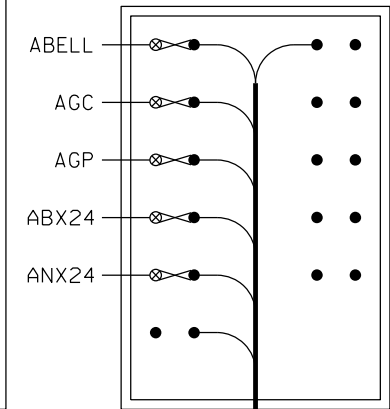
# GATE A



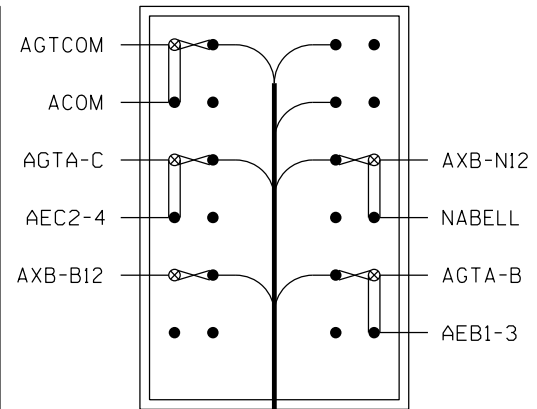
## GATE A BASE JCT BOX



## GATE "A" JCT. BOX TRACK SIDE



## GATE "A" JCT. BOX FIELD SIDE





UG-1A TO HOUSE

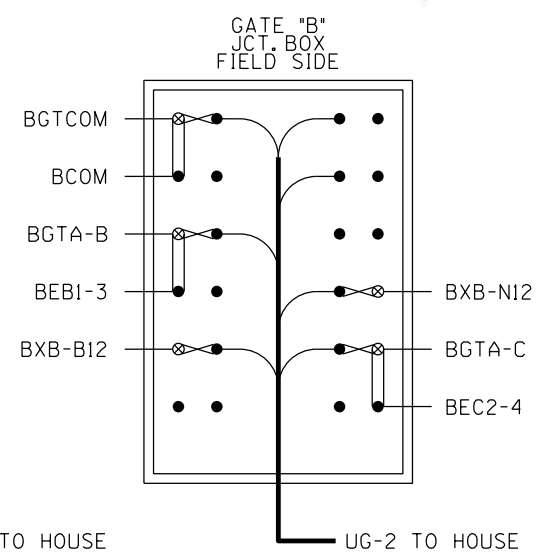
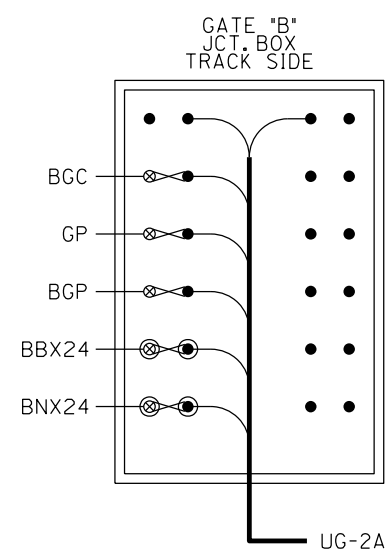
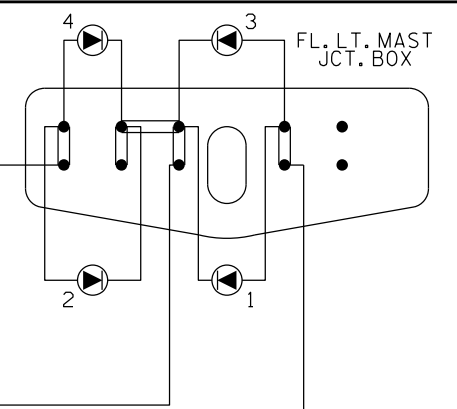
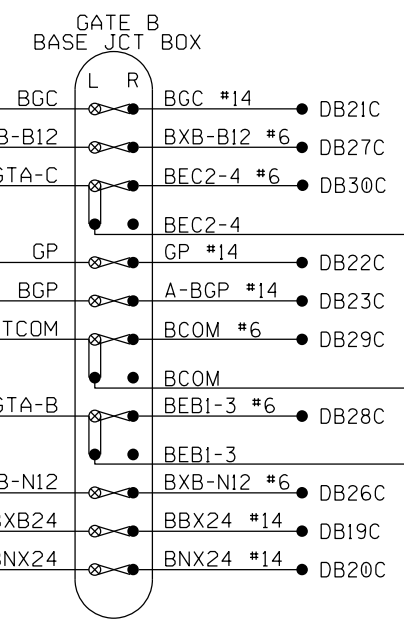
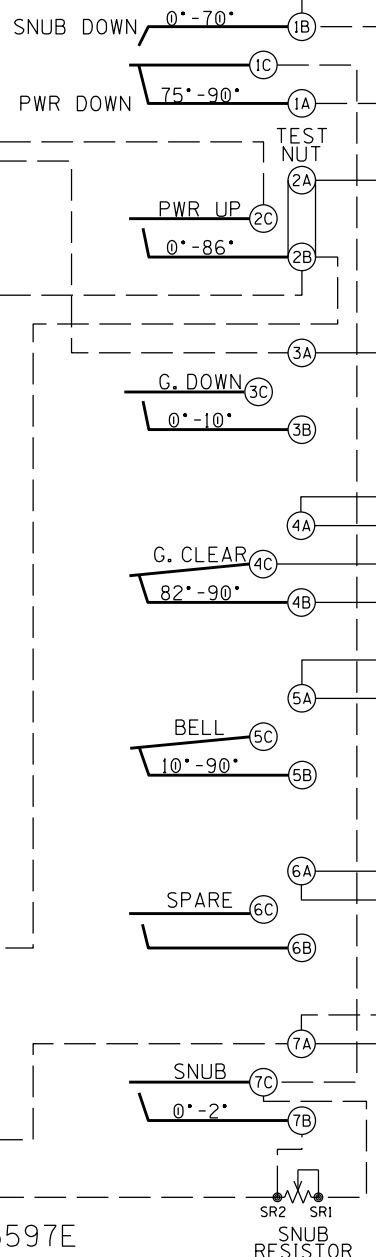
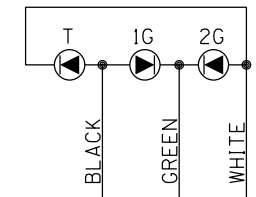
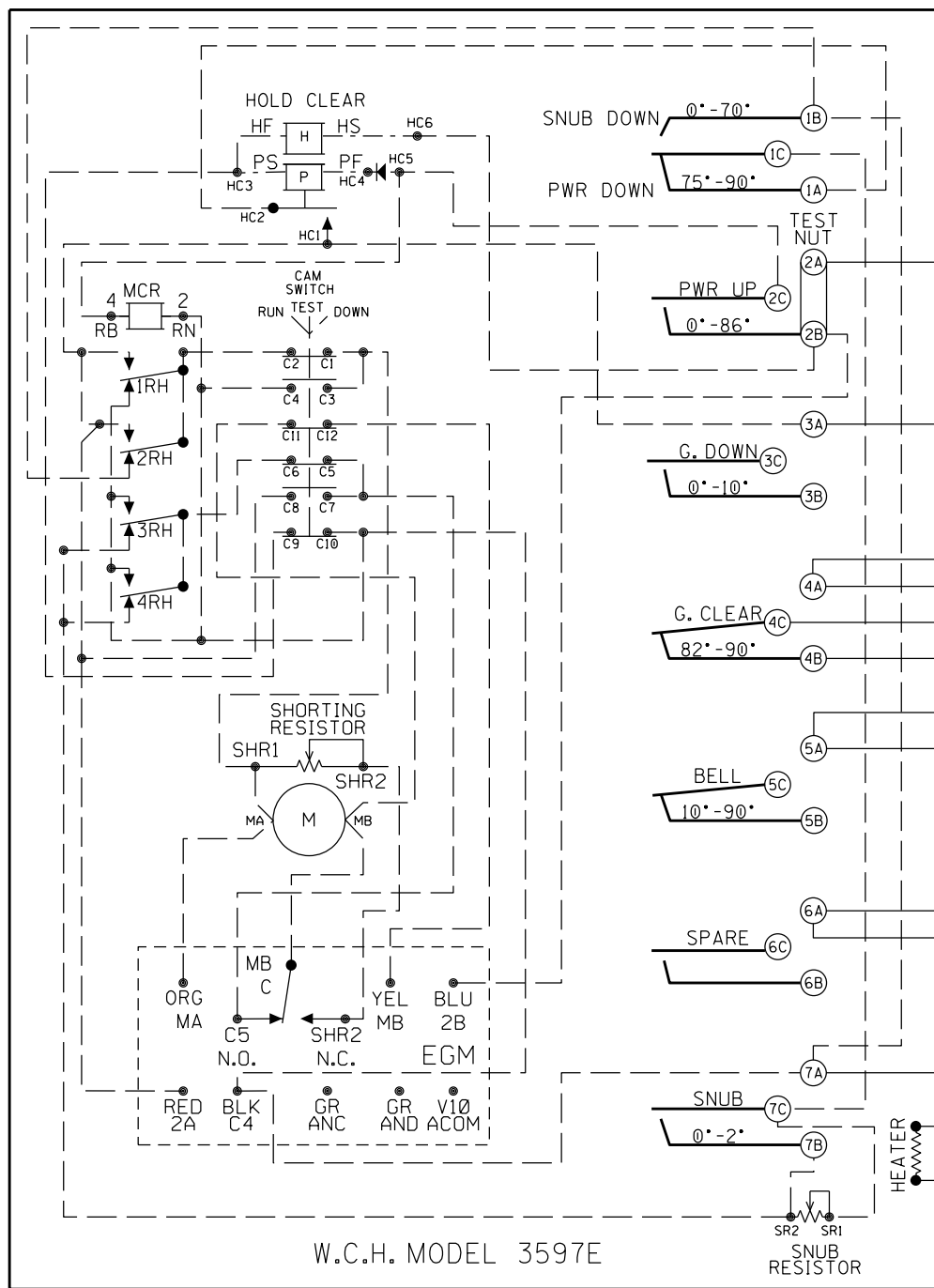
UG-1 TO HOUSE

## GATE & FLASHER CIRCUITS SIGNAL "A"

- NOTES:
1. ALL WIRING #10 AWG UNLESS NOTED OTHERWISE
  2. ADD JUMPERS IN GATE SHOWN IN BOLD.
- [ ] = INTERNAL GATE WIRING  
 ⊗ = TEST LINK   ⊗ = TEST NUT

 <b>RJ Corman Railroad</b> P.O. BOX 788 101 RJ CORMAN DR NICHOLASVILLE, KY 40356			
DESIGNED BY: MGH DIGITIZED BY: RJC CHECKED BY: RWM REV 01	ST. ANTHONY RD. COLDWATER, OH M.P. 123.12	D.O.T. 477-034N ST. MARYS SUBDIVISION	DATE: 01/24/20 FILE: ST12312.10 SHEET 10

# GATE B



NOTES:  
 1. ALL WIRING #10 AWG UNLESS NOTED OTHERWISE  
 [ ] = INTERNAL GATE WIRING  
 ⊗ = TEST LINK    ⊗ = TEST NUT

## GATE & FLASHER CIRCUITS SIGNAL "B"

<b>RJ Corman Railroad</b> P.O. BOX 788 101 RJ CORMAN DR NICHOLASVILLE, KY 40356		
DESIGNED BY: MGH DIGITIZED BY: RJC CHECKED BY: RWM REV 01	ST. ANTHONY RD. COLDWATER, OH M.P. 123.12 D.O.T. 477-034N ST. MARYS SUBDIVISION	DATE: 01/24/20 FILE: ST12312.11 SHEET 11



P.O. BOX 788 101 RJ CORMAN DR  
NICHOLASVILLE, KY 40356

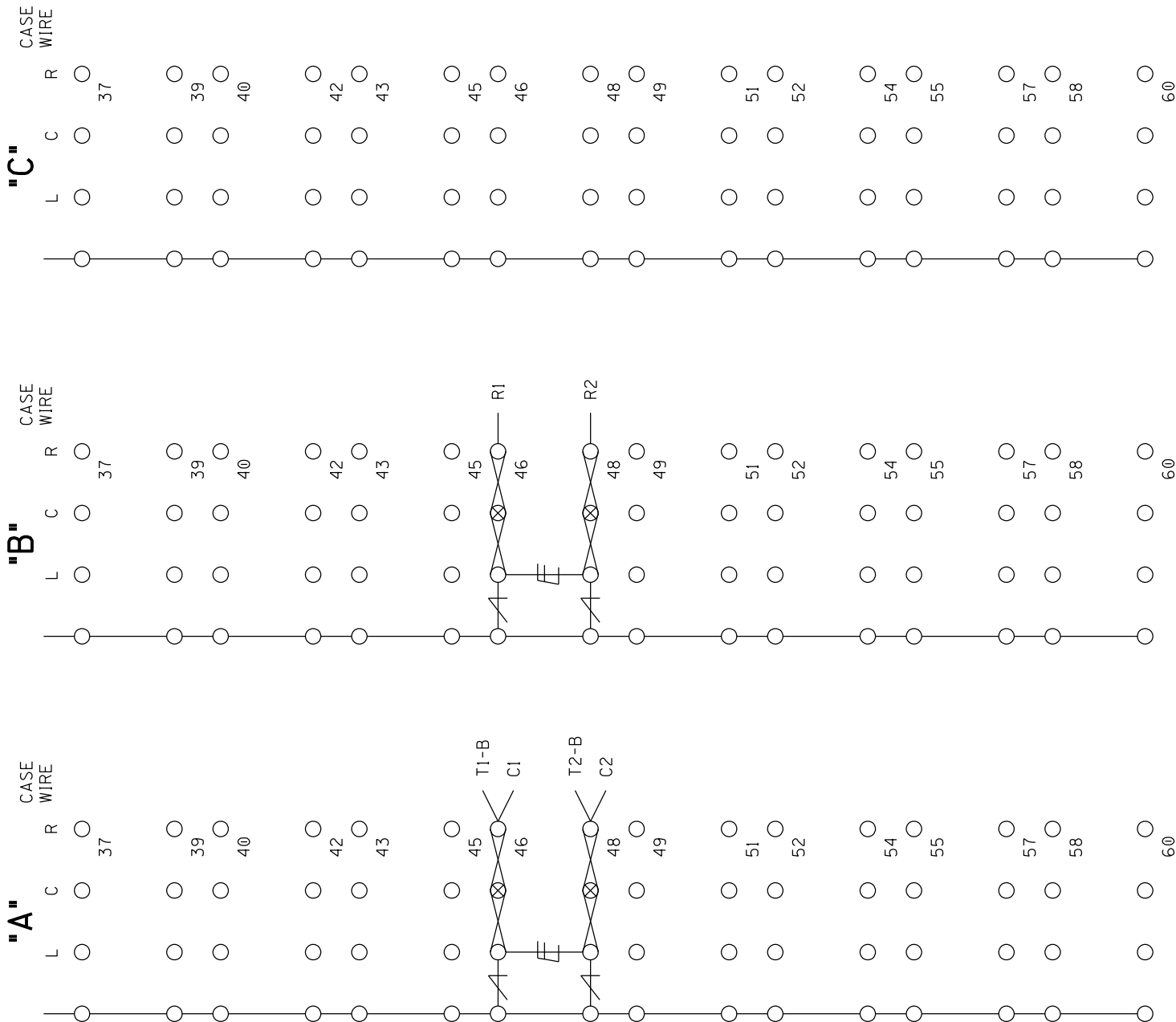
ST. ANTHONY RD.  
COLDWATER, OH  
M.P. 123.12 D.O.T. 477-034N  
ST. MARYS SUBDIVISION



DATE: 01/24/20  
FILE: ST12312.12  
SHEET 12

CONTINUED ON NEXT SHEET

CONTINUED ON PREVIOUS SHEET



NOTE:  
= Heavy Duty Equalizer (022700-1X)  
= Clearview Lightning Arrester (022585-1X)  
= TEST LINK  
= TEST NUT



TERMINAL BOARD FRONT LAYOUT

			<b>RJ Corman Railroad</b> P.O. BOX 788 101 RJ CORMAN DR NICHOLASVILLE, KY 40356					
DESIGNED BY: MGH			ST. ANTHONY RD.			DATE: 01/24/20		
DIGITIZED BY: RJC			COLDWATER, OH			FILE: ST12312.13		
CHECKED BY: RWM			M.P. 123.12 D.O.T. 477-034N			SHEET 13		
REV 01			ST. MARYS SUBDIVISION					

OUTSIDE  
CABLE

"C"

C  
1  
2  
3  
4  
5  
6  
7  
8  
9  
10  
11  
12  
13  
14  
15  
16  
17  
18  
19  
20  
21  
22  
23  
24  
25  
26  
27  
28  
29  
30  
31  
32  
33  
34  
35  
36

OUTSIDE  
CABLE

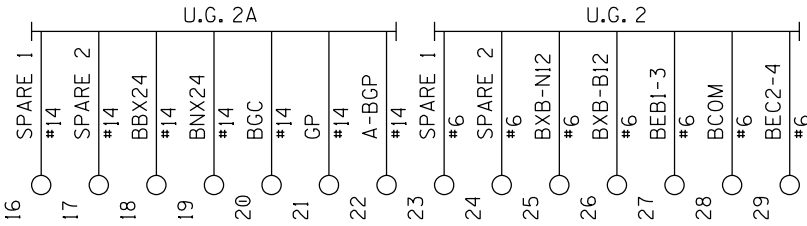
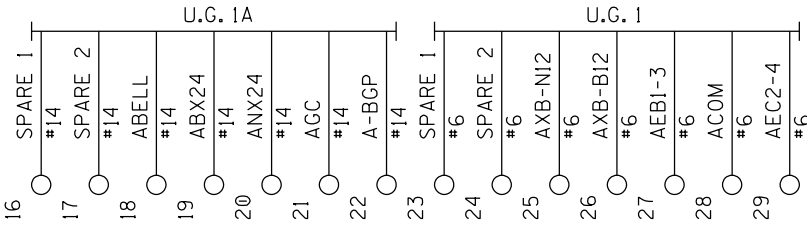
"B"

C  
1  
2  
3  
4  
5  
6  
7  
8  
9  
10  
11  
12  
13  
14  
15  
16  
17  
18  
19  
20  
21  
22  
23  
24  
25  
26  
27  
28  
29  
30  
31  
32  
33  
34  
35  
36

OUTSIDE  
CABLE

"A"

C  
1  
2  
3  
4  
5  
6  
7  
8  
9  
10  
11  
12  
13  
14  
15  
16  
17  
18  
19  
20  
21  
22  
23  
24  
25  
26  
27  
28  
29  
30  
31  
32  
33  
34  
35  
36



TERMINAL BOARD REAR LAYOUT



**RJ Corman Railroad**

P.O. BOX 788 101 RJ CORMAN DR  
NICHOLASVILLE, KY 40356



DESIGNED BY: MGH  
DIGITIZED BY: RJC  
CHECKED BY: RWM  
REV 01

ST. ANTHONY RD.  
COLDWATER, OH  
M.P. 123.12 D.O.T. 477-034N  
ST. MARYS SUBDIVISION

DATE: 01/24/20  
FILE: ST12312.14  
SHEET 14

CONTINUED ON NEXT SHEET

CONTINUED ON PREVIOUS SHEET

OUTSIDE  
CABLE

"C"

C  
37

39  
40

42  
43

45  
46  
48  
49

51  
52

54  
55

57  
58

60

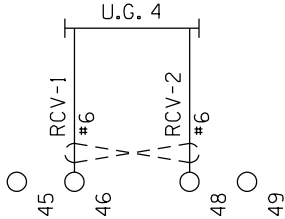
OUTSIDE  
CABLE

"B"

C  
37

39  
40

42  
43



51  
52

54  
55

57  
58

60

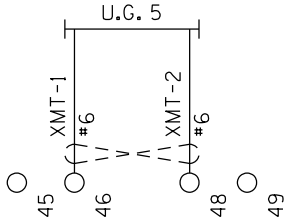
OUTSIDE  
CABLE

"A"

C  
37

39  
40

42  
43



51  
52

54  
55

57  
58

60

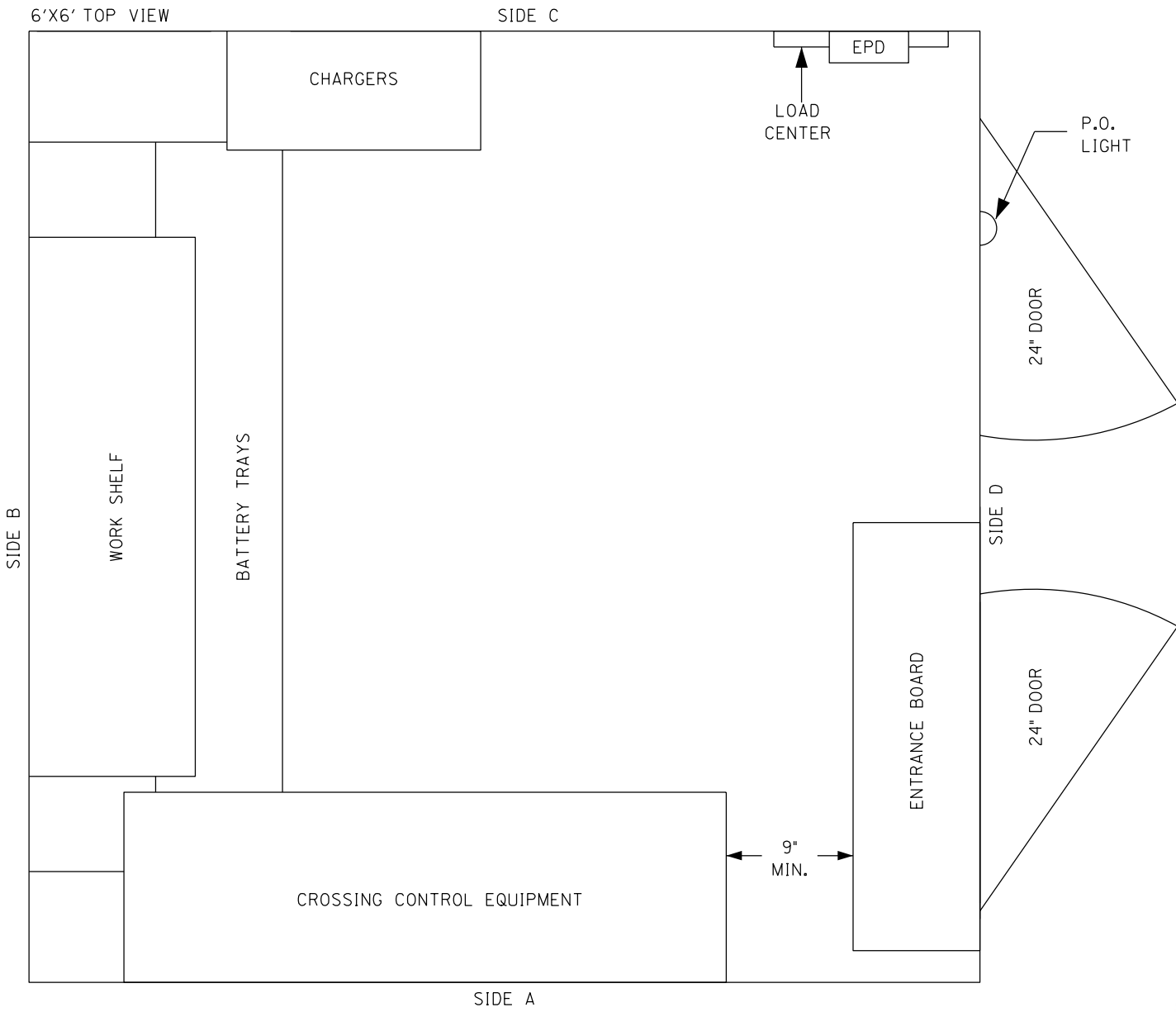
NOTE:

( ) x ( ) = TWIST


TERMINAL BOARD REAR LAYOUT

			<b>RJ Corman Railroad</b> P.O. BOX 788 101 RJ CORMAN DR NICHOLASVILLE, KY 40356					
DESIGNED BY: MGH			ST. ANTHONY RD.			DATE: 01/24/20		
DIGITIZED BY: RJC			COLDWATER, OH			FILE: ST12312.15		
CHECKED BY: RWM			M.P. 123.12 D.O.T. 477-034N			SHEET 15		
REV 01			ST. MARYS SUBDIVISION					



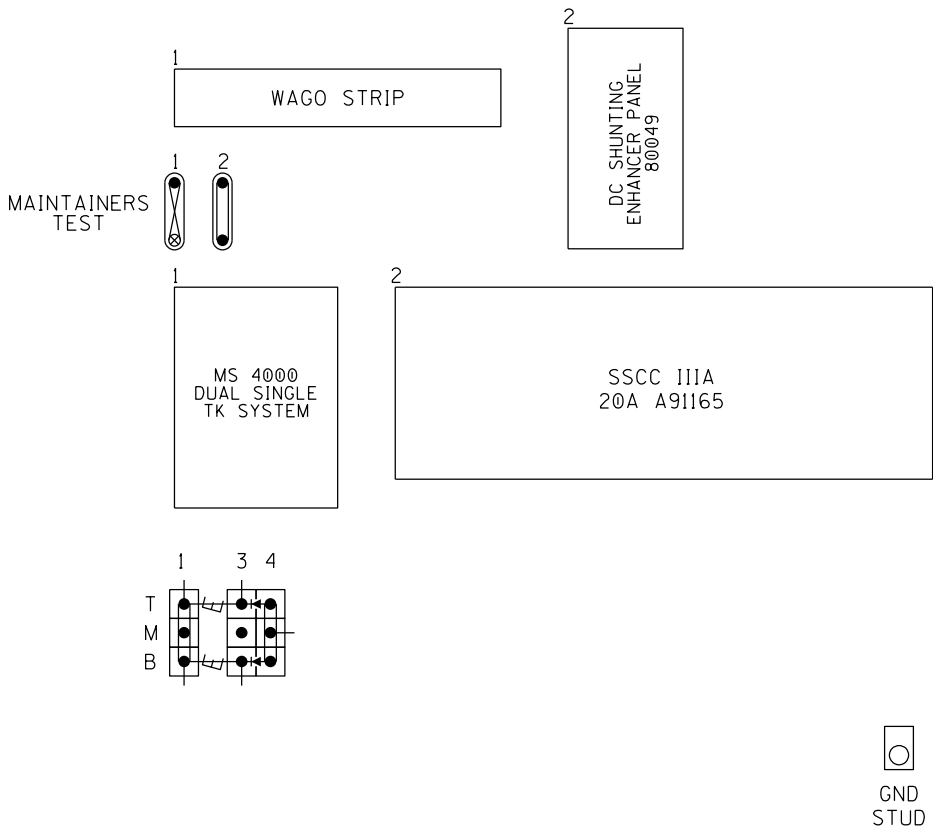


6'X6' SHELTER LAYOUT - TOP VIEW

			<b>RJ Corman Railroad</b> <small>P.O. BOX 788 101 RJ CORMAN DR NICHOLASVILLE, KY 40356</small>					
DESIGNED BY: MGH			ST. ANTHONY RD.			DATE: 01/24/20		
DIGITIZED BY: RJC			COLDWATER, OH			FILE: ST12312.16		
CHECKED BY: RWM			M.P. 123.12 D.O.T. 477-034N			SHEET 16		
REV 01			ST. MARYS SUBDIVISION					

SIDE A VIEW



A  
B  
C  
D  
E



- NOTE:
- = TEST LINK
  - = TEST NUT
  - 
  - = Heavy Duty Equalizer (022700-1X)
  - = RECTIFIER, SAFETRAN PART# 8002A299006
  - = 1X12 BLOCKS



6' X 6' HOUSE - SIDE "A"

 <b>RJ Corman Railroad</b> <small>P.O. BOX 788 101 RJ CORMAN DR NICHOLASVILLE, KY 40356</small>					
DESIGNED BY: MGH		ST. ANTHONY RD.		DATE: 01/24/20	
DIGITIZED BY: RJC		COLDWATER, OH		FILE: ST12312.17	
CHECKED BY: RWM		M.P. 123.12 D.O.T. 477-034N		SHEET 17	
REV 01		ST. MARYS SUBDIVISION			



SIDE B VIEW

A

B

C

D

AC/HEATING  
SUPPLY AIR

AC/HEATING  
RETURN AIR  
& THERMO

HVAC  
THERM

5

RECEPTACLE

WORK SHELF/STORAGE



XB-B12 BATTERY

OB-B12 BATTERY

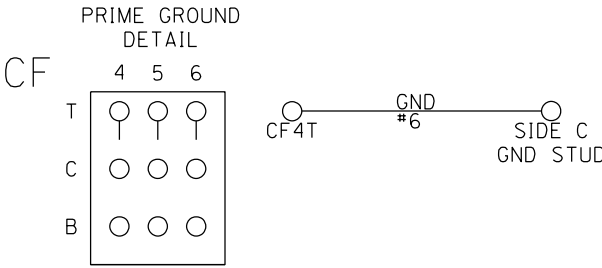
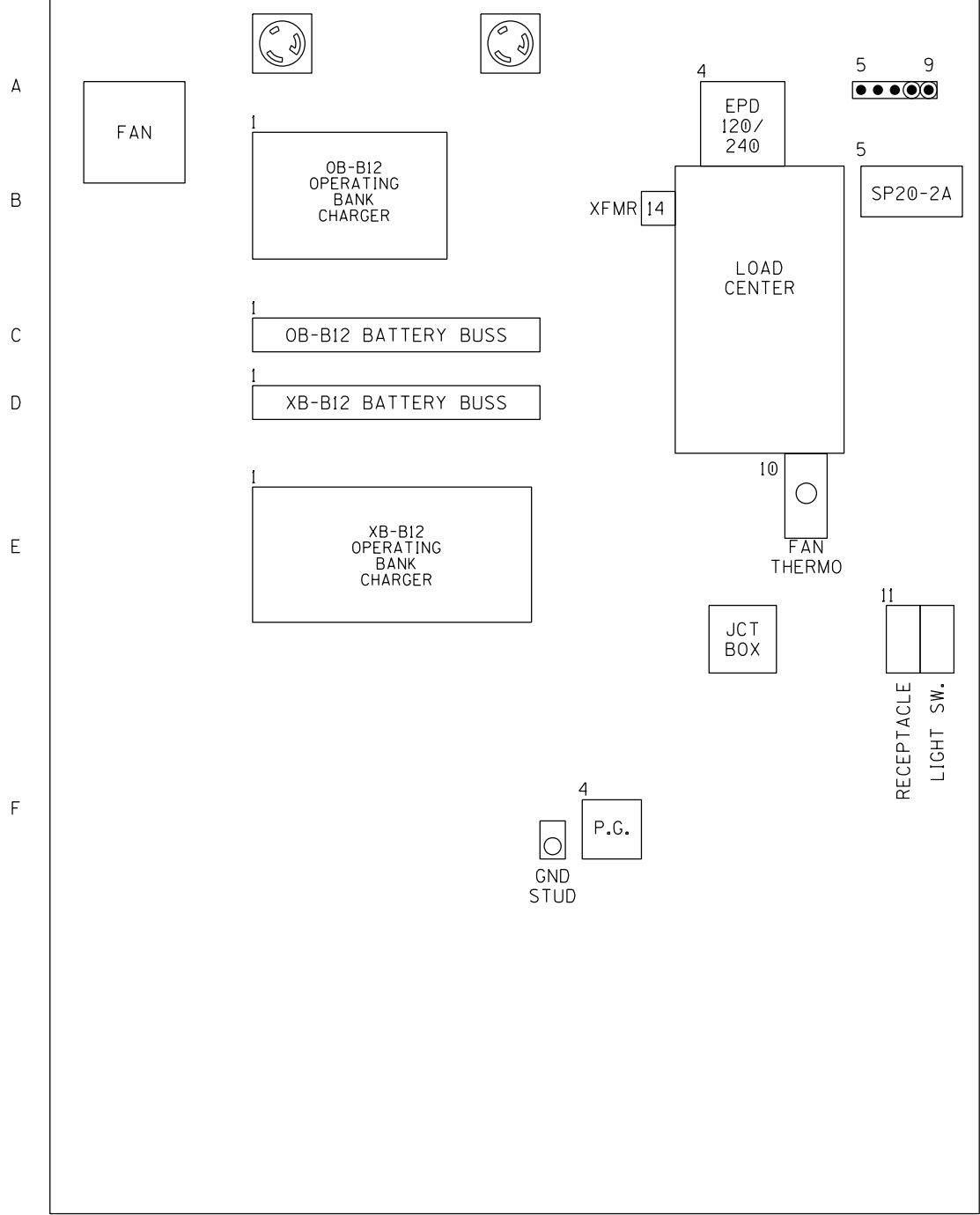
BATTERY TRAYS




6' X 6' HOUSE - SIDE "B"

			<b>RJ Corman Railroad</b> <small>P.O. BOX 788 101 RJ CORMAN DR NICHOLASVILLE, KY 40356</small>					
DESIGNED BY: MGH		ST. ANTHONY RD.				DATE: 01/24/20		
DIGITIZED BY: RJC		COLDWATER, OH				FILE: ST12312.18		
CHECKED BY: RWM		M.P. 123.12		D.O.T. 477-034N		SHEET 18		
REV 01		ST. MARYS SUBDIVISION						

SIDE C VIEW



6' X 6' HOUSE - SIDE "C"

			<b>RJ Corman Railroad</b>					
P.O. BOX 788			101 RJ CORMAN DR			NICHOLASVILLE, KY 40356		
DESIGNED BY: MGH			ST. ANTHONY RD.			DATE: 01/24/20		
DIGITIZED BY: RJC			COLDWATER, OH			FILE: ST12312.19		
CHECKED BY: RWM			M.P. 123.12			D.O.T. 477-034N		
REV 01			ST. MARYS SUBDIVISION			SHEET 19		

E

SIDE D VIEW

GEMS  
P.O.L. 1



DOOR

ENTRANCE BOARD

EMERGENCY SWITCH  
BEHIND TERMINAL BOARD



6' X 6' HOUSE - SIDE "D"

			<b>RJ Corman Railroad</b> <small>P.O. BOX 788 101 RJ CORMAN DR NICHOLASVILLE, KY 40356</small>					
DESIGNED BY: MGH		ST. ANTHONY RD.				DATE: 01/24/20		
DIGITIZED BY: RJC		COLDWATER, OH				FILE: ST12312.20		
CHECKED BY: RWM		M.P. 123.12		D.O.T. 477-034N		SHEET 20		
REV 01		ST. MARYS SUBDIVISION						

Vendor P/N	Description	Order Qty	UOM
RJC66B-A	ENCLOSURE, HOUSE, 6'X6' ALUMINUM, CN, INCL BARD UNIT (A2982)	1	1 ea
A3001	STENCIL, W/ ROAD NAME, M.P., DOT#, RAILROAD NAME	1	1 ea
LC2-001WB-WG4	LIGHT, POWER OFF INDICATOR, 2 EYE, 4 WIRE, W/ WAGO, POL	1	1 ea
3A900436	ROTARY SWITCH BOX, ASSY, 2-POSITION, "NORMAL-EMERGENCY", 2NO/2NC CONTACTS	1	1 ea
4000-44807-06AX	SURGE PROTECTOR, AC LINE, SP20-2A	1	1 ea
EPD120/240TDFL	ERICO PROTECTION DEVICE, PRIMARY,120/240V, EPD	1	1 ea
4000-44585-001X	ARRESTER, HD CLEARVIEW, W/ COVER	32	1 ea
9A2231	TERMINAL BLOCK, AAR, 1" CENTERS, 2X6, WITH NUT AND WASHER ONLY	8	1 ea
9A2230	TERMINAL BLOCK, AAR, 1" CENTERS, 1X12, WITH FLAT NUT AND WASHER ONLY	4	1 ea
9A2233	TERMINAL BLOCK, AAR, 2-3/8" CENTERS, 1X2, WITH NUT AND WASHER ONLY	2	1 ea
ELC-12/20 MD	BATTERY CHARGER, 115/230V IN, 10-17V OUT, 20A OUT MAX, CURRENT MONITOR, ELC-12/20 MD, 27550-10	1	1 ea
ELC-12/40 MD	BATTERY CHARGER, 115/230V IN, 10-17V OUT, 40A OUT MAX, CURRENT MONITOR, ELC-12/40 MD, 27560-10	1	1 ea
50G11	BATTERY CELL, 2V, 264 AH, 50G11	6	1 ea
50G15	BATTERY CELL, 2V, 368 AH, 50G15	7	1 ea
82687-3-P	BATTERY TRAY, 12"X38"	2	1 ea
152-11-3038	WIRE, CASE, T.C. BLUE, #10, OKONITE	800	1 ft
152-11-3002	WIRE, CASE, T.C. BLUE, #16, OKONITE	600	1 ft
282-601	WAGO, TERMINAL BLOCK, 2 COND, 24-10 AWG, 282-601, CN	40	1 ea
282-337	WAGO, SEPARATOR, THROUGH BLOCK, 282-337, CN	3	1 ea
282-402	WAGO, ADJACENT JUMPER, 24-10 AWG, 282-402, CN	36	1 ea
282-317	WAGO, END PLATE, ORANGE, 282-317, CN	1	1 ea
249-117	WAGO, END STOP, 249-117, CN	1	1 ea
210-112	WAGO, DIN RAIL, SLOTTED CARRIER, 2 METERS, 210-112	1	1 ea
793-566	WAGO, MARKER CARD, 1-50, 5-PACK, 793-566	1	1 ea
9000-91165-0101	ELECTRONICS, SOLID STATE CROSSING CONTROLLER, 20 AMP, (SSCC IIIA)	1	1 ea
8421-80490-0001	ELECTRONICS, MS 4000, SINGLE, 1 TRK UNIT, REDUNDANT	1	1 ea
8000-8A299-0006	ELECTRONICS, RECTIFIER DIODES, 8000-8A299-0006	4	1 ea
TBD	80049 - TRACK ENHANCER PANEL	1	1 ft
4000-44700-0000	EQUALIZER, BASIC 44700	8	1 ea
023275-12X	TERMINAL BLOCK, BAKELIGHT, THROUGH-HOLE, 1" CENTERS, 1X12	4	1 ea
023275-2	TERMINAL INSULATION BLOCK, BAKELIGHT, 1X6 (2 EA REQUIRED PER 1x12 THROUGH-HOLE)	8	1 ea
023390-11X	TERMINAL BLOCK, BAKELIGHT, 1" CENTERS, 1X12	6	1 ea
023612-1X	TERMINAL BLOCK, BAKELITE, 2-3/8" CENTERS, 1X2, W/O LINK	10	1 ea
029603-3X	RESISTOR, ADJUSTABLE, 6.3 OHM	2	1 ea
9A2200	CONNECTOR, FLAT STRAP, 1" CENTER, 2 HOLE	20	1 ea
9A2211	CONNECTOR, TEST LINK, STRAIGHT, 2-3/8"	40	1 ea
9A2201	CONNECTOR, FLAT STRAP, 2-3/8" CENTER, 2 HOLE	20	1 ea
9A2208	NUT, AAR, TEST, GOLD, #14-24	50	1 ea
9A2204	NUT, AAR, BINDING, BRASS, #14-24	300	1 ea
9A2202	NUT, AAR, CLAMP, #14-24 HEX	150	1 ea
013986-000	NUT, AAR, INSULATED	8	1 ea

9A2203	WASHER, AAR, BEVELED, FLAT, 1/4" STUD	200	1 ea
63129	CABLE TIE, NYLON, 14.5" L, 100 PK	2	100 pk
L1420PZ	PLUG, TWIST LOCK, 20A, 125/250V, 4-WIRE, *DO NOT USE*	2	1 ea
55809904	WIRE, SOOW, 600V, BLACK, #14, 3 CONDUCTOR	20	1 ft
9A2205	CONNECTOR, TEST LINK, STRAIGHT, 1"	30	1 ea
KUP-14D15-24	RELAY, POWER, 3PDT, 10A, 24VDC, 11-PIN, CN GATE HEATER/SNOW MELTER	1	1 ea
9A2205-7	CONNECTOR, TEST LINK, OFFSET, 1"	4	1 ea
BE2G	TRANSFORMER, 40VA, 24V, BE2G	1	1 ea
206-11-6247	CABLE, SIGNAL, SOLID, BLACK, #6, 7 CONDUCTOR, OKONITE	300	1 ft
206-11-6887	CABLE, SIGNAL, SOLID, BLACK, #14, 7 CONDUCTOR, OKONITE	300	1 ft
150-12-3933	CABLE, TRACK, DUPLEX, BLACK/RED, #6, 2 CONDUCTOR, OKONITE	250	1 ft
206-11-6130	CABLE, POWER, AC SERVICE, #2, 3 CONDUCTOR, W/ #6 GROUND, OKONITE	150	1 ft
SW-BG-SOL6	WIRE, BARE, SOLID, #6	150	1 ft
615880	GROUNDING, ROD, 5/8" X 8'	4	1 ea
CA900940-04	SHUNT ENCLOSURE, PVC, L&W	2	1 ea
M-10-RJCM-32-2-BL	GATE MECHANISM, 3597, 19' - 32' GATE W/ LED LIGHTS, 5" BASE & MAST, 2-WAY LED, COUNTERWEIGHT, X-BUCK SIGN, CONVERSION BRACKET, HIGH WIND BRACKET, ELECTRONIC BELL	2	1 ea
DA-10807	FOUNDATION, HELICAL, 10" X 7', 8" BOLTS, 285 #	2	1 ea
2511L003-750	GATE MECHANISM, HEATER ASSY, 25A THERMOSTAT, 50 OPEN, 40 CLOSE	2	1 ea
SBNT1161G	GROUNDING, ONE SHOT, NT 3-HOLE, 5/8" DIA GRD ROD TO #6 SOLID	4	1 ea
SB20136	GROUNDING, HEAD BOND, 3/16"X7-1/2" TAB, BOX 100	80	1 ea
RJC-ENS-1	SIGNS, CROSSING, EMERGENCY NOTIFICATION, 9"x12", HI-INTENSITY	2	1 ea
ZB1772	DUCT SEAL, 5LB BAG	1	1 ea
NA1658-0	GREASE, NO-OXIDE, 14 OZ CAN	1	1 ea
561185	TAPE, SCOTCH® SUPER 33+ VINYL ELECTRICAL, 3/4x66FT	1	1 ea
974102	TAPE, SCOTCH® LINERLESS RUBBER SPLICING, 3/4x30FT	1	1 ea
6E00-62775-3497	SHUNT, NARROW BAND, MULTI-FREQUENCY, ERICO BONDSTRAND, 348 - 970HZ	2	1 ea
998031-T06938	HOSE, RUBBER, 3/4"	60	1 ft
BA2363J	GROUNDING, SLEEVE, REDUCING, 3/16", #6, TINNED	8	1 ea
SBTBBU4A	GROUNDING, BOOTLEG, W/COUPLER, BOX 100	80	1 ea
A248B	RAIL CLIP, (1) 3/8 PERPENDICULAR, BOX 50	8	1 ea
111BC	TRACK CONNECTION, FLOWER POT, 10" W X 12" H	2	1 ea
SBS8LINSUL	WIRE, BONDSTRAND, S8, INSULATED 4/64 PVC, BLACK, 500 FT	500	1 ft
TBD	INS. JTS	2	1 ea
TBD	BARRICADE FOR HOUSE AND SIGNALS -PER LINEAR FOOT	45	1 ft
TBD	FILL/DGA	107	TON



## Rail Development Commission

Mike DeWine, Governor  
Jon Husted, Lt. Governor

Mark Policinski, Chair

November 18, 2019

RJ Corman Railroad  
Ms. Deborah Hawley, Real Estate & Funded Projects Manager  
PO Box 788  
101 R. J. Corman Drive  
Nicholasville, KY 40340

RE: Mercer County, Saint Anthony Rd.; CR 110, DOT# 477034N

Dear Ms. Hawley:

A diagnostic review was held at the above grade crossing on July 12, 2019. The crossing has been recommended for the installation of lights and gates.

RJ Corman Railroad is authorized to proceed with the site plans and cost estimates or bid package for this project. This authorization is made with the stipulation and understanding that any field work needs prior approval before work begins. This authorization is made with the stipulation and understanding that an approved estimate may contain entries for items or activities that may be cited and found to be ineligible for federal participation during the project audit. Please note that the railroad must provide ORDC with a plan stamped by a professional engineer licensed in the State of Ohio prior to acceptance and close out of the project.

The diagnostic review form is attached. Please note any recommendations (page 5), if any, made by the team about requirements for this location. Any minor roadway work necessary for MUTCD compliance should be incorporated into the PE and such costs will flow through the railroad reimbursement process.

The Project Manager for this project is Don Damron. Don can be reached at (614) 917-8466, or [don.darmon@dot.ohio.gov](mailto:don.darmon@dot.ohio.gov), if you have any questions.

Sincerely,

Don Damron  
Project Manager

C: Randall Schumacher, Chief, Motor Carrier & Rail Enforcement, PUCO  
Jill Henry, Rail Specialist, PUCO  
Heather Hamilton, ORDC  
ORDC (file)

Attachments: 3 (Diagnostic Review form, Letter Agreement, State of Ohio Purchase Order)





**Public Utilities  
Commission**

Mike DeWine, Governor  
Sam Randazzo, Chairman

**Commissioners**

M. Beth Trombold  
Lawrence K. Friedeman  
Dennis P. Deters  
Daniel R. Conway

October 15, 2019

RJ Corman Railroad  
Ms. Deborah Hawley  
Real Estate & Funded Projects Manager  
PO Box 788  
101 R. J. Corman Drive  
Nicholasville, KY 40340

Re: Mercer County, Saint Anthony Road,  
CR 110, DOT#477-034N, hereinafter  
referred to as the "Project"

Dear Ms. Hawley:

The Public Utilities Commission of Ohio (PUCO) has identified and the Ohio Rail Development Commission (ORDC) surveyed, on July 12, 2019, the above mentioned grade crossing for warning device upgrades. The location has been approved for flashing lights and roadway gates.

The Project shall comply with Agreement No. 004-A, dated May 29, 1991, entered into by the State of Ohio and RJ Corman Railroad (RAILROAD). Furthermore, the RAILROAD shall comply with all applicable state and federal laws governing grade crossing safety programs.

Reimbursable costs will be limited by ORDC based upon approved estimates and bid tabulations, if applicable. These limits will be quantified by the ORDC in its construction authorization to the RAILROAD and may be amended by the ORDC based upon revised estimates and bid tabulations. Additional costs must be approved in writing by the ORDC prior to being incurred. Emergency verbal authorizations by ORDC may be permitted but must be confirmed in writing within ten (10) business days of the verbal approval.

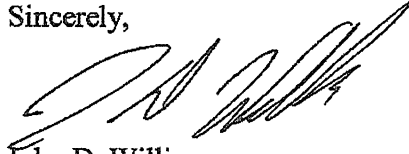
The RAILROAD shall complete plans and estimates for the Project within ninety (90) days after the RAILROAD is notified of authorization to proceed unless otherwise agreed by ORDC/PUCO and the RAILROAD.

The RAILROAD shall not commence construction prior to PUCO's Order and ORDC's construction authorization. The RAILROAD shall provide written notification of the construction start date to PUCO and ORDC no later than five (5) business days prior to such date.

Page 2 of 2  
Saint Anthony Road CR 110  
Mercer County  
RJ Corman

Please indicate your acceptance of the terms and conditions of this Letter of Agreement by signing and returning one (1) copy to Ms. Jill Henry, Rail Specialist, Rail Division, Public Utilities Commission of Ohio, 180 E. Broad Street, Columbus, Ohio 43215-3793.

Sincerely,



John D. Williams  
Director, Transportation  
Public Utilities Commission of Ohio

RJ Corman Railroad

By \_\_\_\_\_

Title \_\_\_\_\_

Date \_\_\_\_\_



Matthew Dietrich  
Executive Director  
Ohio Rail Development Commission

Date 10-25-19



Page 2 of 2  
Saint Anthony Road CR 110  
Mercer County  
RJ Corman

Please indicate your acceptance of the terms and conditions of this Letter of Agreement by signing and returning one (1) copy to Ms. Jill Henry, Rail Specialist, Rail Division, Public Utilities Commission of Ohio, 180 E. Broad Street, Columbus, Ohio 43215-3793.

Sincerely,



John D. Williams  
Director, Transportation  
Public Utilities Commission of Ohio

RJ Corman Railroad


By Seborah J. Hawley Matthew Dietrich  
Executive Director  
Ohio Rail Development Commission  
Title Director - Contracts & Real Estate  
Date 10/23/19 Date \_\_\_\_\_

**Crossing at a glance:** Rank 918


**ORDC Notes:** Incident 8/18. Track slightly skewed. Constituent 9/18 - visual obstruction.

**Please Sign In**

Don Damron Project Manager ORDC

Name	Title	Organization	Signature
	614-917-8466	don.damron@dot.ohio.gov	
	Phone Number	Email	


Tim Flessner PUCO

Name	Title	Organization	Signature
	419-204-7337	timothy.flessner@puco.ohio.gov	
	Phone Number	Email	

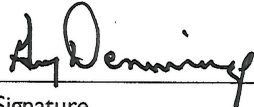
Jim Wiechart Engineer Mercer County

Name	Title	Organization	Signature
	419-586-7759	jim.wiechart@mercercountyohio.org	
	Phone Number	Email	

Michael Clark RJC

Name	Title	Organization	Signature
	859-361-7824	michael.clark@rjcorman.com	
	Phone Number	Email	

Guy Dennings RJC

Name	Title	Organization	Signature
	859-221-2634	guy.dennings@rjcorman.com	
	Phone Number	Email	

Name	Title	Organization	Signature
	Phone Number	Email	

Name	Title	Organization	Signature
	Phone Number	Email	

Name	Title	Organization	Signature
	Phone Number	Email	

Reason for Request: Formula  
(e.g. formula, accident, constituent, etc.)

Date: 7/12/2019

Location Data			
Street or Road Name:		CR 110 / Saint Anthony Road	
County:	Mercer	Township:	US DOT No.: 477034N
City (in or near):	near Coldwater	Railroad Name:	RR Milepost: 123.12
Safety Data (Obtain crash reports, if possible)			
	Initial Information (from database)		Revised
Number & dates of vehicle crashes in previous 5 years:	1- 8/19 (non injury)		
Number & dates of pedestrian/bicycle crashes in previous 5 years:			
Hazard Ranking:	918	Date Run:	03/18/2019

Existing Traffic Control Devices			
Type of Warning Devices	Installed?		Quantity/Comments
<b>HIGHWAY</b>			
Advance Warning Signs (condition?)	<input checked="" type="checkbox"/> Yes	<input type="checkbox"/> No	
'Stop' Signs	<input type="checkbox"/> Yes	<input checked="" type="checkbox"/> No	
'Stop Ahead' Signs	<input type="checkbox"/> Yes	<input checked="" type="checkbox"/> No	
Pavement Markings (condition?)	<input checked="" type="checkbox"/> Yes	<input type="checkbox"/> No	
Dynamic Envelope Markings (condition?)	<input type="checkbox"/> Yes	<input checked="" type="checkbox"/> No	
Illumination	<input type="checkbox"/> Yes	<input checked="" type="checkbox"/> No	
'No Turn' Signs (highway/passive)	<input type="checkbox"/> Yes	<input checked="" type="checkbox"/> No	
Barriers/fencing (pedestrian/bicycle)	<input type="checkbox"/> Yes	<input checked="" type="checkbox"/> No	
LOOK Sign	<input type="checkbox"/> Yes	<input checked="" type="checkbox"/> No	
Do Not Stop On Track Sign	<input type="checkbox"/> Yes	<input checked="" type="checkbox"/> No	
<b>RAILROAD</b>			
Crossbucks	<input checked="" type="checkbox"/> Yes	<input type="checkbox"/> No	
Crossbucks – assembly with Stop	<input type="checkbox"/> Yes	<input checked="" type="checkbox"/> No	
Crossbucks – assembly with Yield	<input checked="" type="checkbox"/> Yes	<input type="checkbox"/> No	
Mast-Mounted Flashing Lights	<input type="checkbox"/> Yes	<input checked="" type="checkbox"/> No	
Cantilever Flashing Lights	<input type="checkbox"/> Yes	<input checked="" type="checkbox"/> No	Number: Length:
Side Lights	<input type="checkbox"/> Yes	<input checked="" type="checkbox"/> No	
LED or Incandescent Lights? Size?	<input type="checkbox"/> Yes	<input checked="" type="checkbox"/> No	
Automatic Gates	<input type="checkbox"/> Yes	<input checked="" type="checkbox"/> No	Number: Length:
Bells	<input type="checkbox"/> Yes	<input checked="" type="checkbox"/> No	Number:
Sidewalk/Pedestrian Gate Arms	<input type="checkbox"/> Yes	<input checked="" type="checkbox"/> No	Number: Length:
'No Turn' Signs (railroad/active)	<input type="checkbox"/> Yes	<input checked="" type="checkbox"/> No	
Is crossing flagged by train crew?	<input type="checkbox"/> Yes	<input checked="" type="checkbox"/> No	
<b>OTHER</b>	<input type="checkbox"/> Yes	<input type="checkbox"/> No	

Railroad Data		
Type of Train: <input checked="" type="checkbox"/> Freight <input type="checkbox"/> Intercity Passenger <input type="checkbox"/> Transit <input type="checkbox"/> Shared Use Transit <input type="checkbox"/> Commuter <input type="checkbox"/> Tourist/Other		
Railroad Characteristics	Initial Information (from database)	Revised
Total trains per day	2	1 / DAY
<1 per day? Trains per week	4	8 / WEEK (4 RT / WEEK)
Day thru trains	0	TRAIN COUNT MAY INCREASE
Night thru trains	0	
Switching	0	
Total number of tracks	1	
Number of main tracks	1	
Number of other tracks	-	
Maximum train speed	25	✓ 25 MPH
Typical train speed	25-25	✓ 25 MPH
Amtrak		
Are there other track(s) crossing this same roadway within 100ft of this crossing? <input type="checkbox"/> Yes <input checked="" type="checkbox"/> No		
If yes, Crossing DOT# (if different) _____		
If yes, distance _____ (take measurement between track centerlines at closest point along roadway)		
If multiple tracks, can two trains occupy crossing at the same time? <input type="checkbox"/> Yes <input type="checkbox"/> No		
Can one train block the motorists' view of another train at the crossing? <input type="checkbox"/> Yes (explain below) <input checked="" type="checkbox"/> No		
Can one or more tracks be eliminated through the crossings? <input type="checkbox"/> Yes <input checked="" type="checkbox"/> No		
Comments:		
Circuitry: <input type="checkbox"/> Constant Warning Time <input type="checkbox"/> Motion Detection <input type="checkbox"/> AFO <input type="checkbox"/> PTC <input type="checkbox"/> DC <input type="checkbox"/> Other _____		

Roadway Data		
Local Highway Authority:		Mercer County
Roadway Characteristics	Initial Information (from database)	Revised
Average Daily Traffic	1,485	✓ OK
Highway Paved	<input checked="" type="checkbox"/> Yes <input type="checkbox"/> No	<input checked="" type="checkbox"/> Yes <input type="checkbox"/> No
Roadway Surface: <input checked="" type="checkbox"/> Blacktop <input type="checkbox"/> Gravel <input type="checkbox"/> Concrete Other _____		
Roadway width (paved/travelled way): <u>24</u> ft		
Number of Highway Lanes	2	
Urban or Rural	Rural - Local	✓
Vehicle Speed: <u>55</u> MPH		✓
School Bus Operation: <input checked="" type="checkbox"/> Yes <input type="checkbox"/> No Amount <u>1</u> UNKNOWN		
Location of nearby schools: <u>CROSSING IS LOCATED BETWEEN COLDWATER AND CELINA SCHOOLS</u>		
Hazardous Materials Trucks: <input checked="" type="checkbox"/> Yes <input type="checkbox"/> No Amount (from FRA) <u>5%</u> LHA verified/changed?		
Shoulders: <input checked="" type="checkbox"/> Yes <input type="checkbox"/> No <u>2'</u>		
Is the Shoulder Surfaced? <input checked="" type="checkbox"/> Yes <input type="checkbox"/> No If yes, shoulder width: <u>2</u> ft.		
Is there existing guardrail along the roadway in crossing vicinity? <input type="checkbox"/> Yes <input checked="" type="checkbox"/> No		
Crossing Angle <input type="checkbox"/> 0-29° <input checked="" type="checkbox"/> 30-59° <input checked="" type="checkbox"/> 60-90° Measured in <u>NE</u> Quadrant?		
Quadrant _____ Curb & Gutter:	Quadrant _____ Curb & Gutter:	
<input type="checkbox"/> Functional (Curb height = 4" or more)	<input type="checkbox"/> Functional (Curb height = 4" or more)	
<input type="checkbox"/> Non-functional (Curb height = less than 4")	<input type="checkbox"/> Non-functional (Curb height = less than 4")	
<input checked="" type="checkbox"/> None	<input checked="" type="checkbox"/> None	
Is there a nearby intersection that could cause queuing over the crossing? <input type="checkbox"/> Yes <input checked="" type="checkbox"/> No		
If yes, distance _____		
Is this intersection signalized? <input type="checkbox"/> Yes <input checked="" type="checkbox"/> No		
Are there signals currently interconnected with the existing crossing warning devices? <input type="checkbox"/> Yes <input checked="" type="checkbox"/> No		
Is there a 'Do Not Stop on Track' sign? <input type="checkbox"/> Yes <input checked="" type="checkbox"/> No		
Is a roadway improvement project (e.g. widening, turn lanes, nearby new or upgraded traffic signal, sidewalk) planned at or near this location in the foreseeable future? <input type="checkbox"/> Yes <input checked="" type="checkbox"/> No		
If yes:		
Improvement type _____ Lead Agency _____ Timeline/completion _____		

Pedestrian & Bicycle Data	
Regular pedestrian usage:	<input checked="" type="checkbox"/> Yes <input type="checkbox"/> No    Volumes: <input type="checkbox"/> Occasional <input type="checkbox"/> <20 <input type="checkbox"/> 20-60 <input type="checkbox"/> >60
Is sidewalk present in the approach?	<input type="checkbox"/> Yes <input checked="" type="checkbox"/> No    Quadrants: <b>CELINA TO COLDWATER BICYCLE TRAIL PARALLELS TRACKS/CROSSES ROADWAY.</b>
Does crossing surface accommodate pedestrians?	<input type="checkbox"/> Yes <input checked="" type="checkbox"/> No
Both sides of roadway?	<input type="checkbox"/> Yes <input checked="" type="checkbox"/> No    If no, which side is paved?
Pedestrian generators in close proximity (e.g. schools, sports/entertainment venues)?	<input checked="" type="checkbox"/> Yes <input type="checkbox"/> No <b>TRAIL</b>
Comments:	
Regular bicycle usage:	<input checked="" type="checkbox"/> Yes <input type="checkbox"/> No <b>TRAIL USERS MUST CROSS ROADWAY TO ACCESS TRAIL</b>
<input type="checkbox"/> Roadway <input type="checkbox"/> Dedicated Lane (on street) <input checked="" type="checkbox"/> Dedicated Path (off street) <input type="checkbox"/> Shared Use (pedestrian/bicycle) Path <input type="checkbox"/> Bikes must use sidewalk <b>TRAIL DOES NOT CROSS TRACKS (PARALLEL TO TRACKS)</b>	
Future plans for pedestrian or bicycle routes?	<input type="checkbox"/> Yes <input checked="" type="checkbox"/> No
Comments:	

Utility Information	
Is commercial power available?	<input checked="" type="checkbox"/> Yes <input type="checkbox"/> No <b>DP+L TERMINATES EAST OF CROSSING</b>
Utility Provider (Company Name)	<b>MIDWEST ELECTRIC/CITY OF CELINA TERMINATES WEST OF XING.</b>
Nearest Available Power Source	<b>DP+L TRANSMISSION LINE PARALLELS TRACKS</b>
What other utilities are present? <input type="checkbox"/> Gas <input type="checkbox"/> Cable <input type="checkbox"/> Telephone <input type="checkbox"/> Fiber Optic Cable (add locations to sketch) <input type="checkbox"/> Petroleum <input type="checkbox"/> Water <input type="checkbox"/> Sanitary Sewer <input type="checkbox"/> Other <b>NO DUPS MARKINGS ON SITE AT TIME OF SURVEY</b>	
Comments:	

Surface	
Surface review form completed?	<input type="checkbox"/> Yes <input checked="" type="checkbox"/> No <b>CONCRETE PANEL SURFACE (APPROX 10 YRS OLD)</b>

Sight Preview (REFER TO TABLES)	
If non-gated crossing, is clearing sight distance adequate in all quadrants? (See Table 1)	<input checked="" type="checkbox"/> Yes <input type="checkbox"/> No
Is stopping sight distance adequate? (See Table 2)	<input checked="" type="checkbox"/> Yes <input type="checkbox"/> No    If no, which quadrant? _____
When considering recommendations for bicycle treatments:	
Bicycle sight distance adequate?	<input checked="" type="checkbox"/> Yes <input type="checkbox"/> No    If no, which quadrant? _____
When considering recommendations for pedestrian treatments:	
Pedestrian sight distance adequate?	<input checked="" type="checkbox"/> Yes <input type="checkbox"/> No    If no, which quadrant? _____

## Potential Red Flags / Project Challenges

Traffic Signal Preemption (include traffic signal intersection name and LHA with jurisdiction over traffic signal, if known):

NA

Crossing Consolidation or Closure:

No

Real Estate or ROW:

ROADWAY = 60' ROW  
RAILROAD = 80' ROW (40' FROM CENTER)

Culvert / Drainage / Ballast Conditions:

CULVERT LOCATIONS MUST BE IDENTIFIED PRIOR TO SELECTING LOCATION FOR BUNGALOW. SITE FLOODING RESULTS IN FLOWS THROUGH TRACK BALLAST. COUNTY ENGINEER REQUESTS AN OPPORTUNITY TO REVIEW THE PLAN (SITE LAYOUT) PRIOR TO APPROVAL.

Roadway and/or Sidewalks:

NA

Circuitry (e.g. reaches out to other crossings, specific needs, etc.):

DARK TERRITORY

Environmental:

NA

Utilities:

NA

Other:

## Potential Closure

Is it the consensus of the Diagnostic Review Team that this is a potential closure project? *No*

Explain reasons:

## Diagnostic Team Recommendations

☐ No improvements needed

Quadrants Needed

☐ Install/upgrade active devices

☐ Automatic Flashing Lights (AFLS)

☐ AFLS / Cants

☒ AFLS / Gates

☐ AFLS / Gates / Cants

☒ Bells / number

*ONE BELL*

☐ Upgrade circuitry / type

☐ Sidelights

☐ LED Upgrades

☐ Guardrail Needed

☐ Install/Replace curb

☒ Bungalow placement & offset from rail & highway

*SE QUADRANT PREFERRED*

☐ Other (define)

Comments: *CONSIDER USING RETAINING WALLS TO PROTECT UG WIRING IN FLOOD SITUATIONS.*

☐ Install/upgrade traffic signal preemption

Other (define):

## Diagnostic Team Recommendations (cont.)

### PEDESTRIAN/BICYCLE Treatments (additional, not included above)

☐ Crossing Surface (specify)

☐ Sidewalk (specify)

☐ Detectable warning surfaces

☐ LOOK Sign (R15-8)

☐ Stop lines

☐ Illumination

☐ Dynamic envelop markings

☐ Channelization

☐ Path delineation

☐ Fencing/barriers

☐ Other

Comments:

**Acknowledgement of Recommendations** (each entity represented at the diagnostic must have at least one signature/initial acknowledgement):

*[Signature]* *mcc*  
*[Signature]* *[Signature]*  
*[Signature]* *[Signature]*



### Field Sketch (optional)

Include utilities as marked by OUPS and LHA; include ROW boundaries as indicated by railroad and LHA.

### Clearing Sight Distances

Maximum Authorized Train Speed	Distance (dT) Along Railroad from Crossing (ft)
1 - 10	240
15	360
20	480
25	600
30	720
35	840
40	960
45	1080
50	1200
55	1320
60	1440
65	1560
70	1680
75	1800
80	1920
85	2040
90	2160

Source: R-H Grade Crossing Handbook Table 36 (pp. 132-133)

#### Notes:

All calculated distances are rounded up to the next higher 5-foot increment.

Distances indicated are for 65-ft double bottom semi-tractor trailers and level single track 90 degree crossings; and may need to be adjusted for multiple tracks, skewed crossings or approaches on grades.

Clearing Sight Distance is to be measured in each vehicle travel direction at non-gated crossings as viewed from a point 25 feet from centerline of nearest track in the center of whichever travel lane is nearest the direction along track being measured.

### Stopping Sight Distances

Highway Vehicle Speed	Distance (dH) Along Roadway from Crossing (ft)
0	n/a
5	50
10	70
15	105
20	135
25	180
30	225
35	280
40	340
45	410
50	490
55	570
60	660
65	760
70	865

Source: R-H Grade Crossing Handbook Table 36 (pp. 132-133)

#### Notes:

All calculated distances are rounded up to the next higher 5-foot increment.

Distances indicated are for 65-ft double bottom semi-tractor trailers on dry level pavements.

Stopping Sight Distance is to be measured on each roadway approach to crossing from stop bar.

## Bicycle & Pedestrian Clearing Sight Distances

Clearing Sight Distance from Stop Position*											
Crossing of one track								Crossing 2 Tracks		Crossing 3 Tracks	
Train Speed	Car	Single-unit Truck	Bus	WB-50 Semitruck	65-foot Double Truck	Pedestrian <sup>1</sup>	Bicyclist <sup>2</sup>	Pedestrian <sup>1</sup>	Bicyclist <sup>2</sup>	Pedestrian <sup>1</sup>	Bicyclist <sup>2</sup>
10	105	185	200	225	240	120	100	180	120	240	140
20	205	365	400	450	485	240	200	360	240	480	270
25	255	455	500	560	605	300	250	450	290	590	340
30	310	550	600	675	725	360	290	530	350	710	410
40	410	730	795	895	965	480	390	710	470	950	540
50	515	910	995	1,120	1,205	590	490	890	580	1180	670
60	615	1,095	1,195	1,345	1,445	710	580	1060	700	1420	810
70	715	1,275	1,395	1,570	1,680	830	680	1240	810	1650	940
80	820	1,460	1,590	1,790	1,925	950	780	1420	930	1890	1080
90	920	1,640	1,790	2,015	2,165	1060	870	1590	1040	2120	1210

\*A single track, 90-degree, level crossing

<sup>1</sup> Walking 3.5 feet per second across tracks 15 feet apart, with a 2-second reaction time to reach a decision point 10 feet before the center of the first track, and clearing 10 feet beyond the centerline of the second track.

<sup>2</sup> Bicycling 8 miles per hour across tracks 15 feet apart, from a stopped position 10 feet before the center of the first track with an acceleration of 2.5 feet per second, and clearing 10 feet beyond the centerline of the second track on a bike of 6 feet length.

**This foregoing document was electronically filed with the Public Utilities**

**Commission of Ohio Docketing Information System on**

**4/7/2020 11:50:20 AM**

**in**

**Case No(s). 20-0712-RR-FED**

Summary: Application In the Matter of a Request for the Installation of Active Warning Devices at the RJ Corman Railroad Crossing, St Anthony Road/CR 110 DOT#477-034N in Mercer County, Ohio. electronically filed by Mrs. Jill A Henry on behalf of PUCO/Rail Division