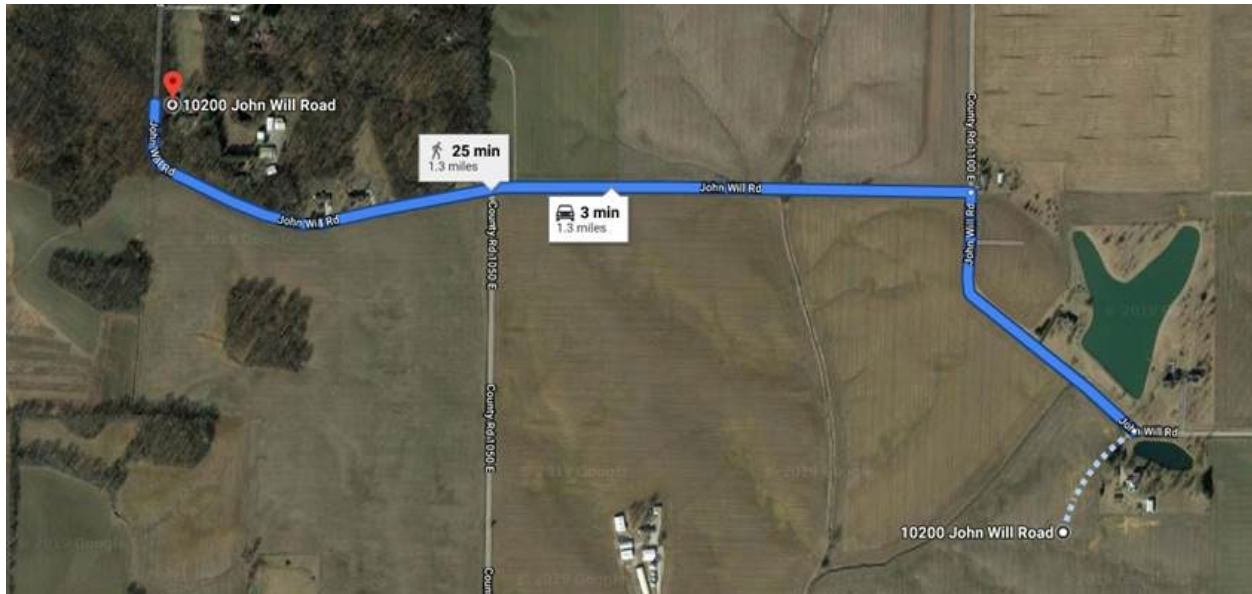


**Case No. 19-1404-EL-REN**  
**Koester-David-IN-PV-9.8kw Residence**  
**Staff Interrogatories – Initial Set**

Question 1: In Section A of the application, you list the facility latitude and longitude as 38.112469, -87.713547. There is no facility at 38.112469, -87.713547. However, it appears the facility may be at 38.118916, -87.730672.

What is the correct facility latitude and longitude?



Answer:

Thank you for pointing this out and we apologize for the delayed response. The facility is located at 38°07'08.0"N 87°43'50.5"W

**This foregoing document was electronically filed with the Public Utilities**

**Commission of Ohio Docketing Information System on**

**11/27/2019 2:06:21 PM**

**in**

**Case No(s). 19-0356-EL-REN**

Summary: Reply Correcting Lat and Long electronically filed by Mr. Javier Chacon on behalf of David Koester