

From: Smith, Greg
Sent: Saturday, January 12, 2019 6:30 PM
To: 'contactOPSB@puc.state.oh.us'
Subject: Viewshed Analysis 18-0488-EL-BGN

Matt,

Please post this email as a Public Comment for the Seneca Wind case 18-0488-EL-BGN.

The case documents for the Republic Wind project 14-2295-EL-BGN include a Cumulative ViewShed Analysis. The text from the Republic Wind case document states:

5.4 Cumulative Visual Impacts

Per the requirements of Ohio Administrative Code Chapter 4906-04-08(D)(4) for the Ohio Power Siting Board, the potential cumulative visual effect of the Republic Wind Project along with other wind energy projects currently operating or proposed in the surrounding region must be considered. Cumulative impacts are two or more individual visual effects which, when taken together, are significant or that compound or increase other similar visual effects. This section addresses the potential cumulative visual impacts that may arise from interactions between the Republic Wind Project and the proposed Seneca and Emerson Creek Wind Projects. No other wind projects are currently proposed in the area. The Seneca and Emerson Creek Wind Projects fall almost entirely within the visual study area, with the nearest turbines occurring 1.6 and 0.9 miles, respectively, from the Republic Project site (as measured between the nearest turbines in each project).

If the cumulative visual impact study is a requirement per the Ohio Administrative Code Chapter 4906-04-08(D)(4) for the Ohio Power Siting Board, where is this analysis for the Seneca Wind project? I have yet to see this study.

Thanks,

Greg Smith

Bloomville, OH

Individual Project Visibility within the Republic Visual Study Area

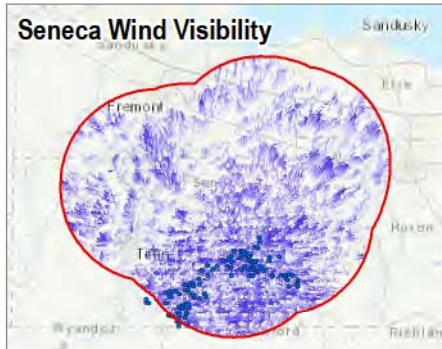
Blade Tip Visibility Based on Topography, Structures, and Vegetation

Many Turbines Potentially Visible

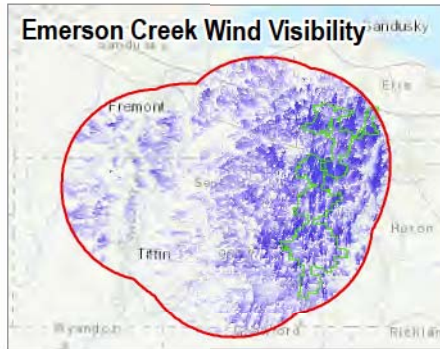
Few Turbines Potentially Visible

0 5 10 20 Miles

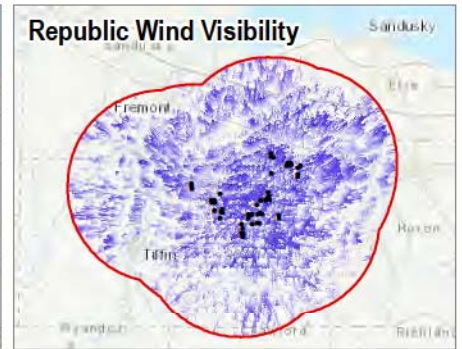
Seneca Wind Visibility



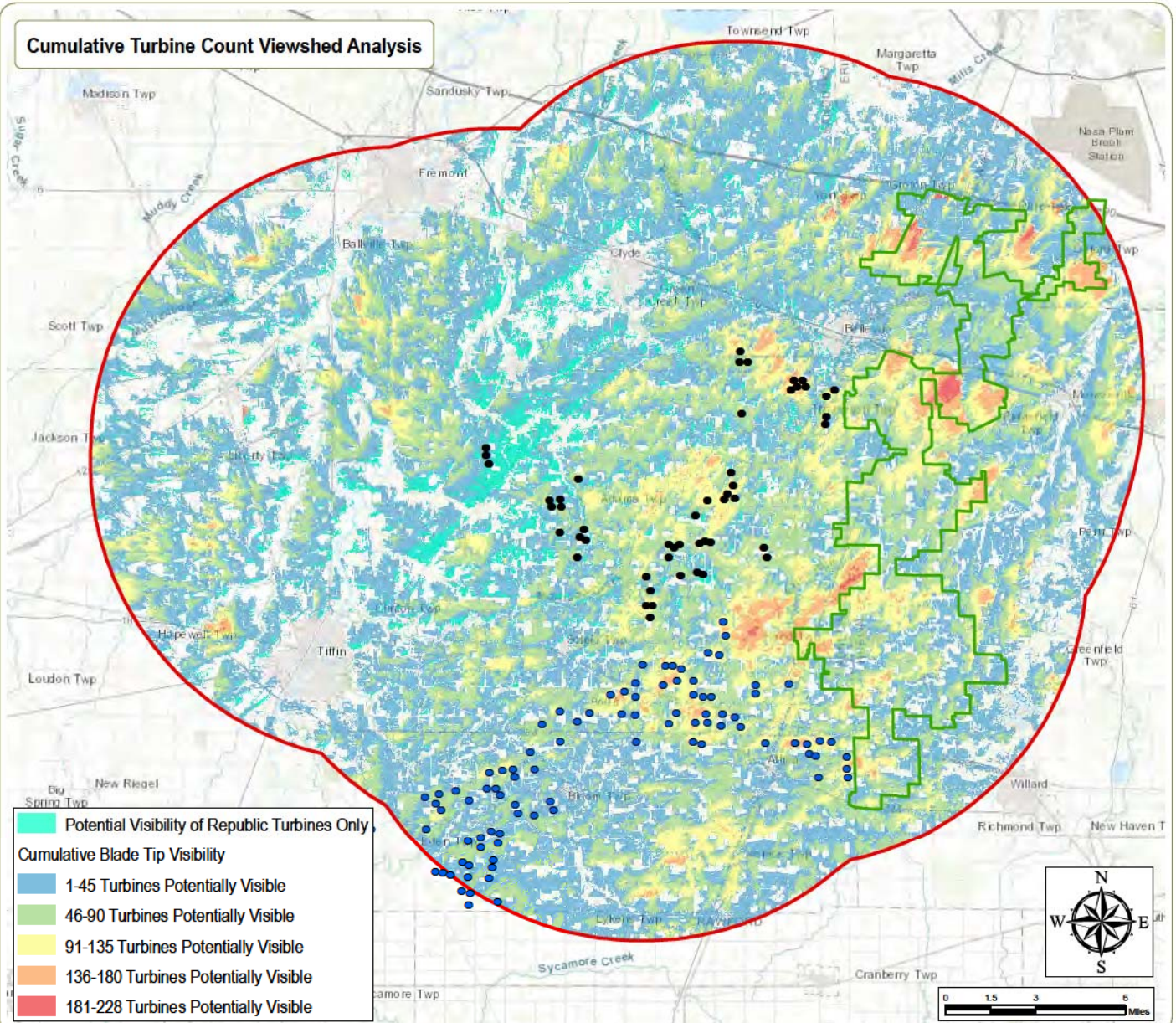
Emerson Creek Wind Visibility



Republic Wind Visibility



Cumulative Turbine Count Viewshed Analysis



Republic Wind Farm

Sandusky and Seneca Counties, Ohio

Figure 9: Cumulative Viewshed Analysis

Notes: 1. Basemap: ESRI ArcGIS Online "World Topographic Map" map service.
2. This map was generated in ArcMap on December 13, 2018.
3. This is a color graphic. Reproduction in grayscale may misrepresent the data.



This foregoing document was electronically filed with the Public Utilities

Commission of Ohio Docketing Information System on

1/14/2019 4:49:43 PM

in

Case No(s). 18-0488-EL-BGN

Summary: Public Comment received via website electronically filed by Docketing Staff on behalf of Docketing.