

**Notes:**  
The aerial photo was acquired through the ESRI Imagery web service. Aerial photography dated 2015.

# HULL

Environment / Energy / Infrastructure

6397 Emerald Pkwy  
Suite 200  
Dublin, Ohio 43016

Phone: (614) 793-8777  
Fax: (614) 793-9070  
www.hullinc.com

DISCLAIMER  
Hull & Associates, Inc. (Hull) has furnished this map to the company identified in the title block (Client) for its sole and exclusive use as a preliminary planning and screening tool and field verification is necessary to confirm these data. This map is reproduced from geospatial information compiled from third-party sources which may change over time. Areas depicted by the map are approximate and may not be accurate to mapping, surveying or engineering standards. Hull makes no representation or guarantee as to the content, accuracy, timeliness or completeness of any information or spatial location depicted on this map. This map is provided without warranty of any kind, including but not limited to, the implied warranties of merchantability or fitness for a particular purpose. In no event will Hull, its owners, officers, employees or agents, be liable for damages of any kind arising out of the use of this map by Client or any other party.

November 2018

Republic Wind

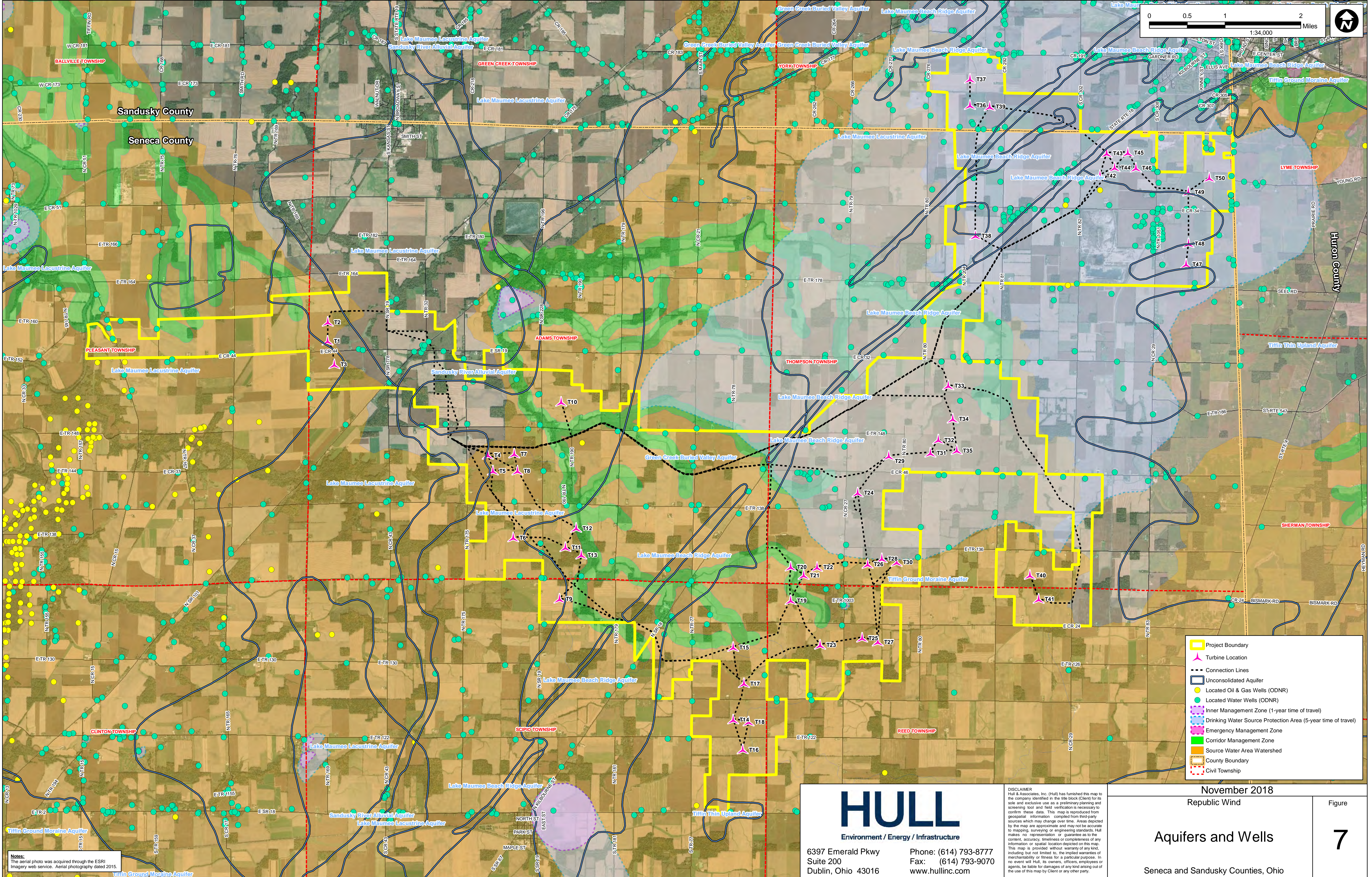
## Ecological Map

Seneca and Sandusky Counties, Ohio

Figure

# 6





**Notes:**  
The aerial photo was acquired through the ESRI Imagery web service. Aerial photography dated 2015.

**HULL**  
Environment / Energy / Infrastructure

6397 Emerald Pkwy  
Suite 200  
Dublin, Ohio 43016

Phone: (614) 793-8777  
Fax: (614) 793-9070  
www.hullinc.com

DISCLAIMER  
Hull & Associates, Inc. (Hull) has furnished this map to the company identified in the title block (Client) for its sole and exclusive use as a preliminary planning and screening tool and field verification is necessary to confirm these data. This map is reproduced from geospatial information compiled from third-party sources which may change over time. Areas depicted by the map are approximate and may not be accurate to mapping, surveying or engineering standards. Hull makes no representation or guarantee as to the content, accuracy, timeliness or completeness of any information or spatial location depicted on this map. This map is provided without warranty of any kind, including but not limited to, the implied warranties of merchantability or fitness for a particular purpose. In no event will Hull, its owners, officers, employees or agents, be liable for damages of any kind arising out of the use of this map by Client or any other party.

November 2018		Figure <b>7</b>
Republic Wind		
Aquifers and Wells		
Seneca and Sandusky Counties, Ohio		

File Name: ACX002\_02\_Fig07\_Wells.mxd  
Edited: 12/3/2018 By: kasp



**This foregoing document was electronically filed with the Public Utilities**

**Commission of Ohio Docketing Information System on**

**12/26/2018 12:05:42 PM**

**in**

**Case No(s). 17-2295-EL-BGN**

Summary: Application Exhibit F Part 2 of 6 electronically filed by Teresa Orahod on behalf of Dylan F. Borchers