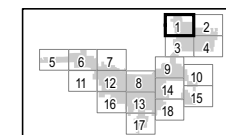


Republic Wind Farm

Adams, Pleasant, Reed, Scipio, and Thompson Townships, Seneca County, and York Township, Sandusky County, Ohio

Figure 08-4: Delineated Resources

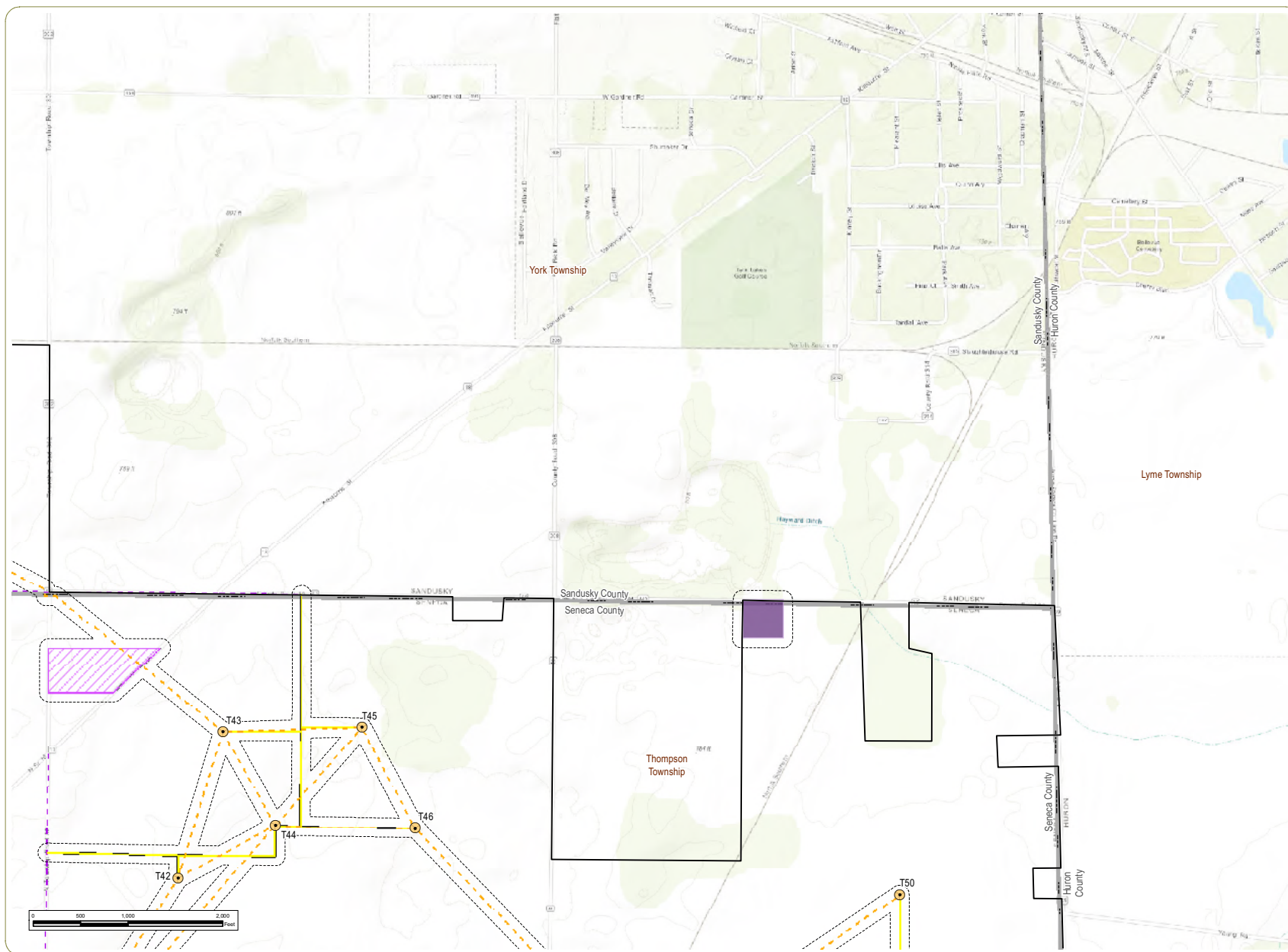
- Wind Turbine
- Access Road
- Collection Line
- Local Delivery Route
- Delineated Stream
- Laydown Yard
- Delineated Wetland
- 100-Foot Limit of Disturbance
- Project Boundary
- Township Boundary
- County Boundary
- Undeveloped Land
- Deciduous Forest



Sheet 1 of 18

Notes: 1. Basemap: ESRI ArcGIS Online "World Topographic Map" map service. 2. This map was generated in ArcMap on December 13, 2018. 3. This is a color graphic. Reproduction in grayscale may misrepresent the data. 4. Project Components provided by Apex; Delineated water resources data provided Cardno. Vegetative communities derived from ODNR land cover data. 5. Map Scale 1:12,000.



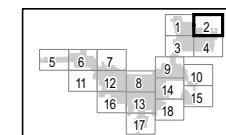


Republic Wind Farm

Adams, Pleasant, Reed, Scipio, and Thompson Townships, Seneca County, and York Township, Sandusky County, Ohio

Figure 08-4: Delineated Resources

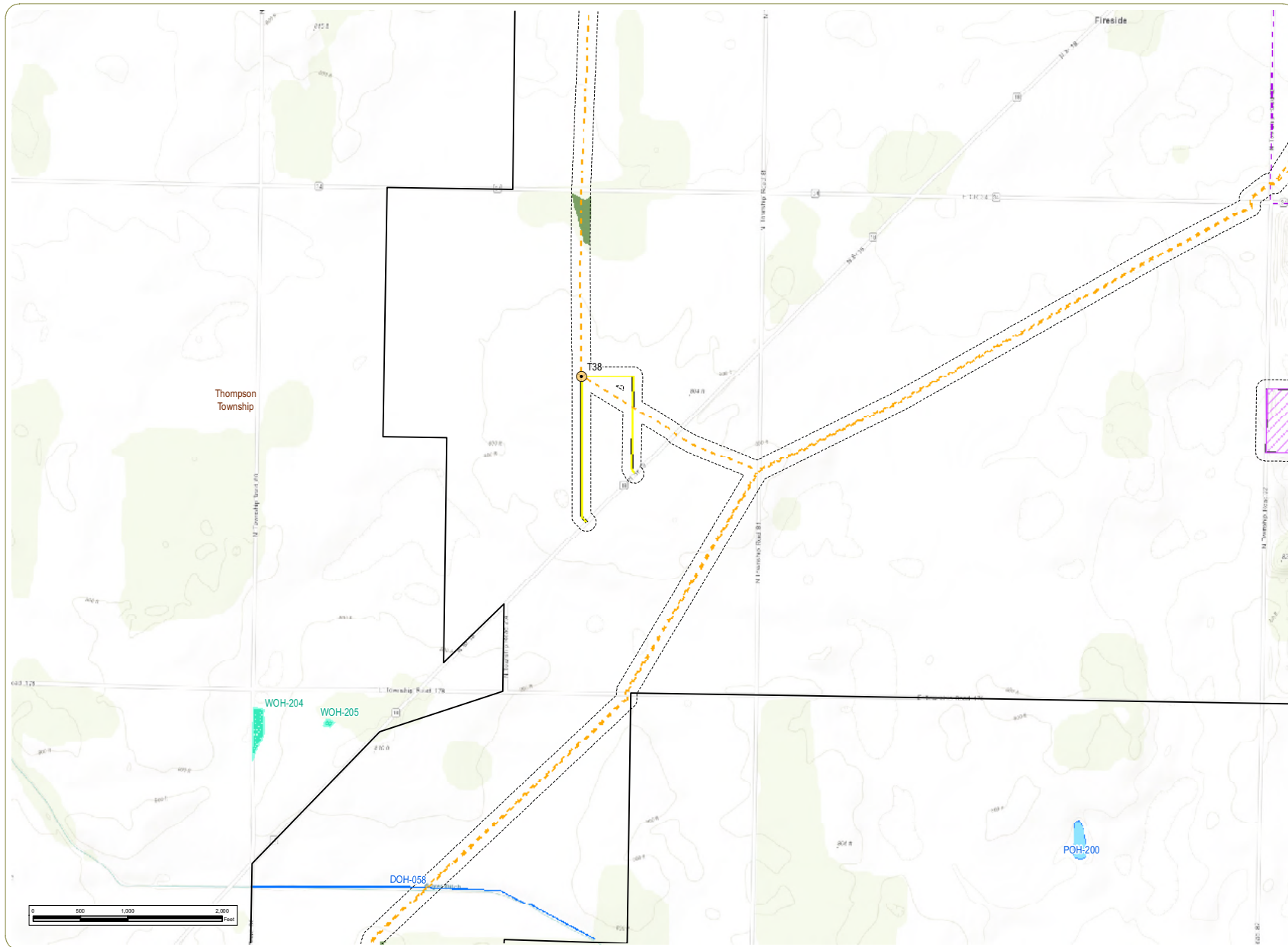
- Wind Turbine
- Access Road
- Collection Line
- Local Delivery Route
- Laydown Yard
- O&M Facility
- 100-Foot Limit of Disturbance
- Project Boundary
- Township Boundary
- County Boundary
- Undeveloped Land
- Deciduous Forest



Sheet 2 of 18

Notes: 1. Basemap: ESRI ArcGIS Online "World Topographic Map" map service. 2. This map was generated in ArcMap on December 13, 2018. 3. This is a color graphic. Reproduction in grayscale may misrepresent the data. 4. Project Components provided by Apex; Delineated water resources data provided Cardno. Vegetative communities derived from ODNR land cover data. 5. Map Scale 1:12,000.



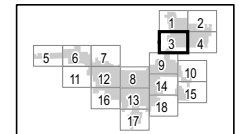


Republic Wind Farm

Adams, Pleasant, Reed, Scipio, and Thompson Townships, Seneca County, and York Township, Sandusky County, Ohio

Figure 08-4: Delineated Resources

- Wind Turbine
- Access Road
- Collection Line
- Local Delivery Route
- Delineated Stream
- Laydown Yard
- Delineated Waterbody
- Delineated Wetland
- 100-Foot Limit of Disturbance
- Project Boundary
- Township Boundary
- County Boundary
- Undeveloped Land
- Deciduous Forest



Sheet 3 of 18

Notes: 1. Basemap: ESRI ArcGIS Online "World Topographic Map" map service. 2. This map was generated in ArcMap on December 13, 2018. 3. This is a color graphic. Reproduction in grayscale may misrepresent the data. 4. Project Components provided by Apex; Delineated water resources data provided Cardno. Vegetative communities derived from ODNR land cover data. 5. Map Scale 1:12,000.



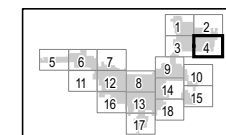


Republic Wind Farm

Adams, Pleasant, Reed, Scipio, and Thompson Townships, Seneca County, and York Township, Sandusky County, Ohio

Figure 08-4: Delineated Resources

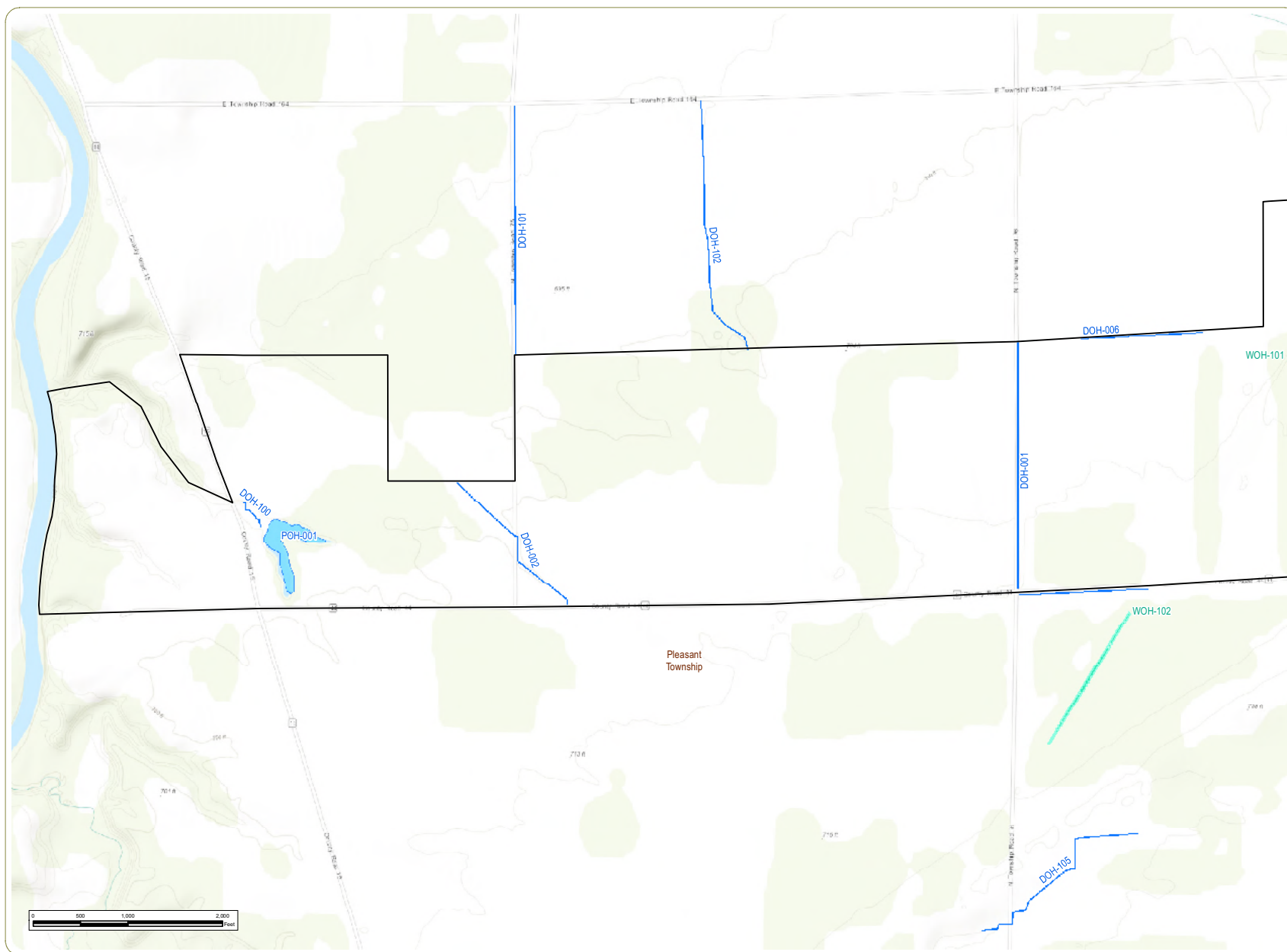
- Wind Turbine
- Access Road
- Collection Line
- Local Delivery Route
- Delineated Stream
- Laydown Yard
- O&M Facility
- Delineated Wetland
- 100-Foot Limit of Disturbance
- Project Boundary
- Township Boundary
- County Boundary
- Undeveloped Land
- Deciduous Forest



Sheet 4 of 18

Notes: 1. Basemap: ESRI ArcGIS Online "World Topographic Map" map service. 2. This map was generated in ArcMap on December 13, 2018. 3. This is a color graphic. Reproduction in grayscale may misrepresent the data. 4. Project Components provided by Apex; Delineated water resources data provided Cardno. Vegetative communities derived from ODNR land cover data. 5. Map Scale 1:12,000.



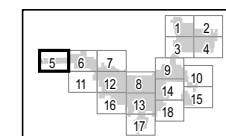


Republic Wind Farm

Adams, Pleasant, Reed, Scipio, and Thompson Townships, Seneca County, and York Township, Sandusky County, Ohio

Figure 08-4: Delineated Resources

- Delineated Stream
- Delineated Waterbody
- Delineated Wetland
- Project Boundary
- Township Boundary
- County Boundary

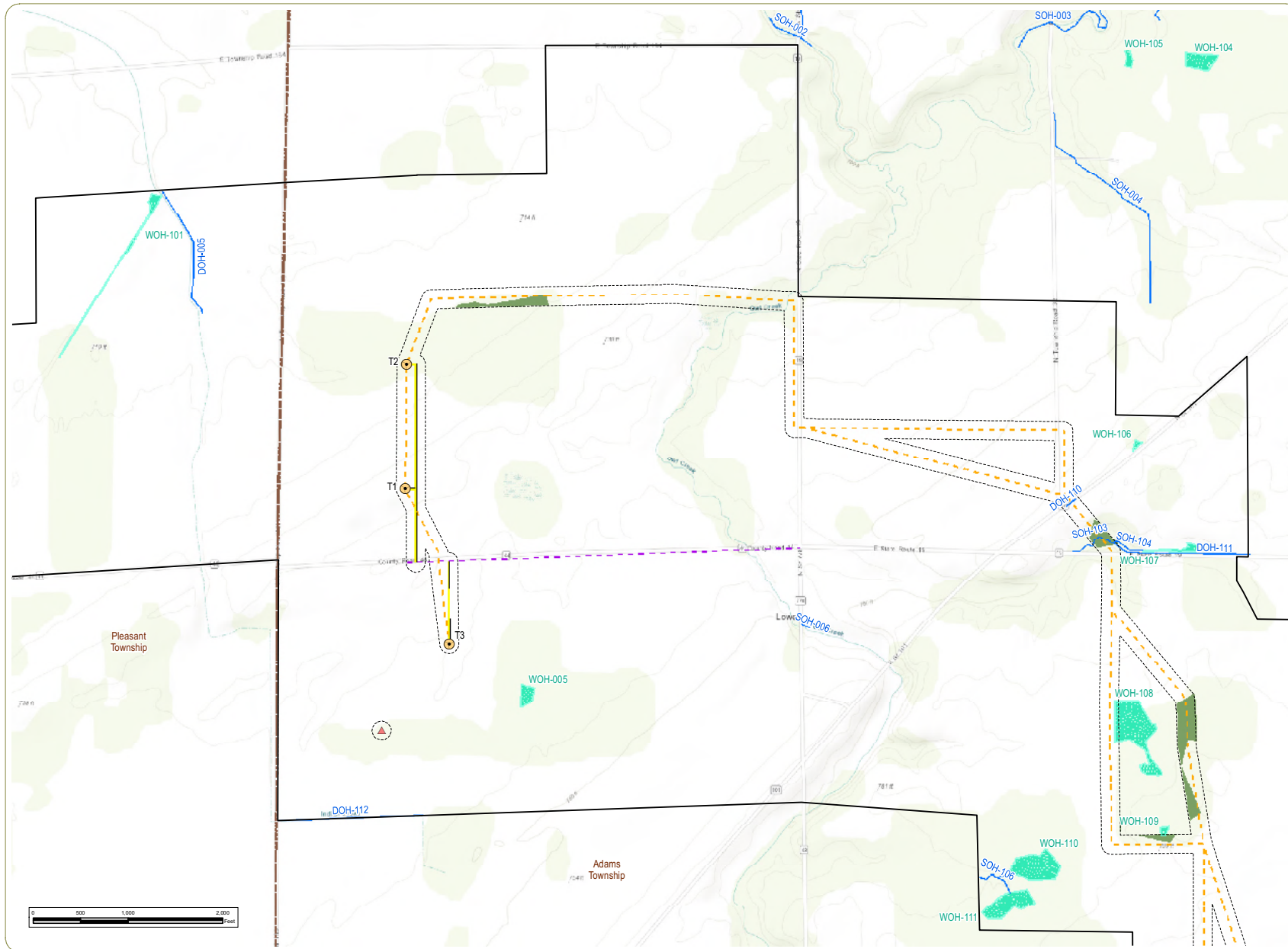


Sheet 5 of 18

Notes: 1. Basemap: ESRI ArcGIS Online "World Topographic Map" map service. 2. This map was generated in ArcMap on December 13, 2018. 3. This is a color graphic. Reproduction in grayscale may misrepresent the data. 4. Project Components provided by Apex; Delineated water resources data provided Cardno. Vegetative communities derived from ODNR land cover data. 5. Map Scale 1:12,000.



www.edrdpc.com

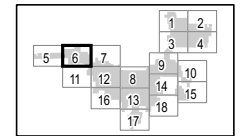


Republic Wind Farm

Adams, Pleasant, Reed, Scipio, and Thompson Townships, Seneca County, and York Township, Sandusky County, Ohio

Figure 08-4: Delineated Resources

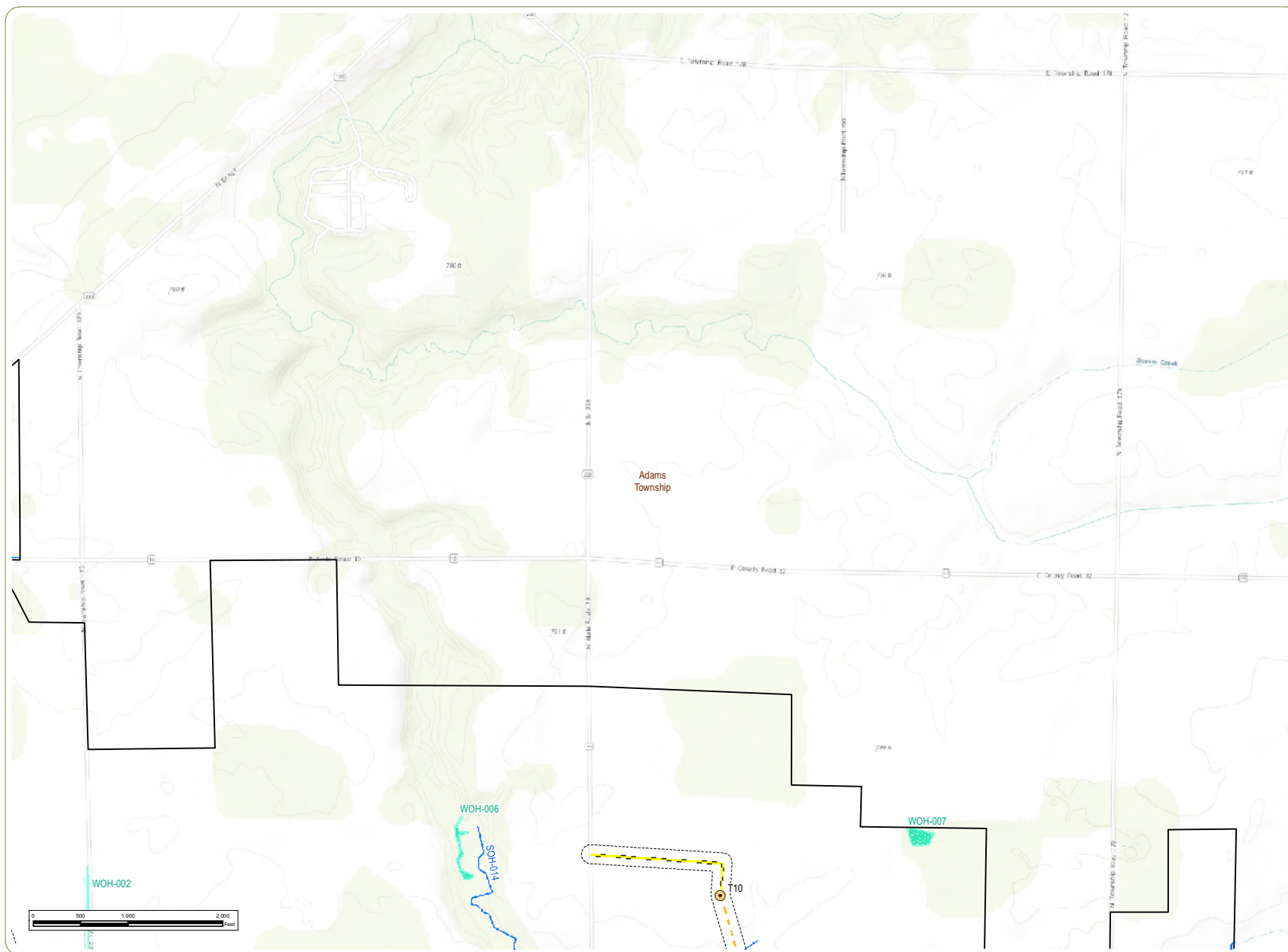
- Wind Turbine
- Met Tower
- Access Road
- Collection Line
- Local Delivery Route
- Delineated Stream
- Delineated Wetland
- 100-Foot Limit of Disturbance
- Project Boundary
- Township Boundary
- County Boundary
- Undeveloped Land
- Deciduous Forest



Sheet 6 of 18

Notes: 1. Basemap: ESRI ArcGIS Online "World Topographic Map" map service. 2. This map was generated in ArcMap on December 13, 2018. 3. This is a color graphic. Reproduction in grayscale may misrepresent the data. 4. Project Components provided by Apex; Delineated water resources data provided Cardno. Vegetative communities derived from ODNR land cover data. 5. Map Scale 1:12,000.



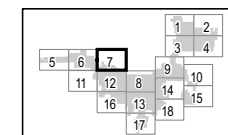


Republic Wind Farm

Adams, Pleasant, Reed, Scipio, and Thompson Townships, Seneca County, and York Township, Sandusky County, Ohio

Figure 08-4: Delineated Resources

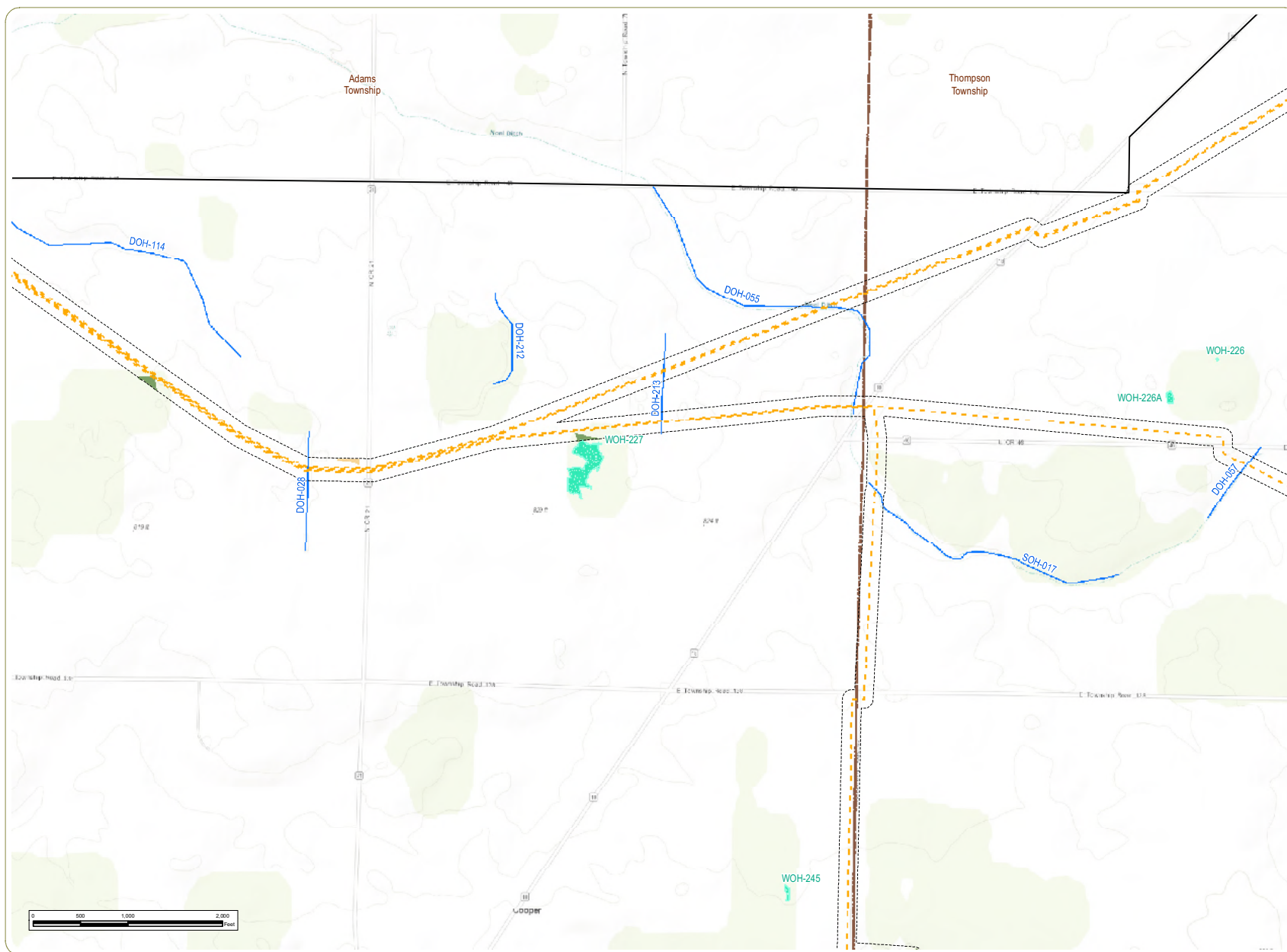
- Wind Turbine
- Access Road
- Collection Line
- Delineated Stream
- Delineated Wetland
- 100-Foot Limit of Disturbance
- Project Boundary
- Township Boundary
- County Boundary



Sheet 7 of 18

Notes: 1. Basemap: ESRI ArcGIS Online "World Topographic Map" map service. 2. This map was generated in ArcMap on December 13, 2018. 3. This is a color graphic. Reproduction in grayscale may misrepresent the data. 4. Project Components provided by Apex; Delineated water resources data provided Cardno. Vegetative communities derived from ODNR land cover data. 5. Map Scale 1:12,000.



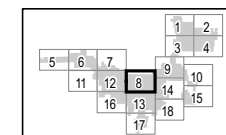


Republic Wind Farm

Adams, Pleasant, Reed, Scipio, and Thompson Townships, Seneca County, and York Township, Sandusky County, Ohio

Figure 08-4: Delineated Resources

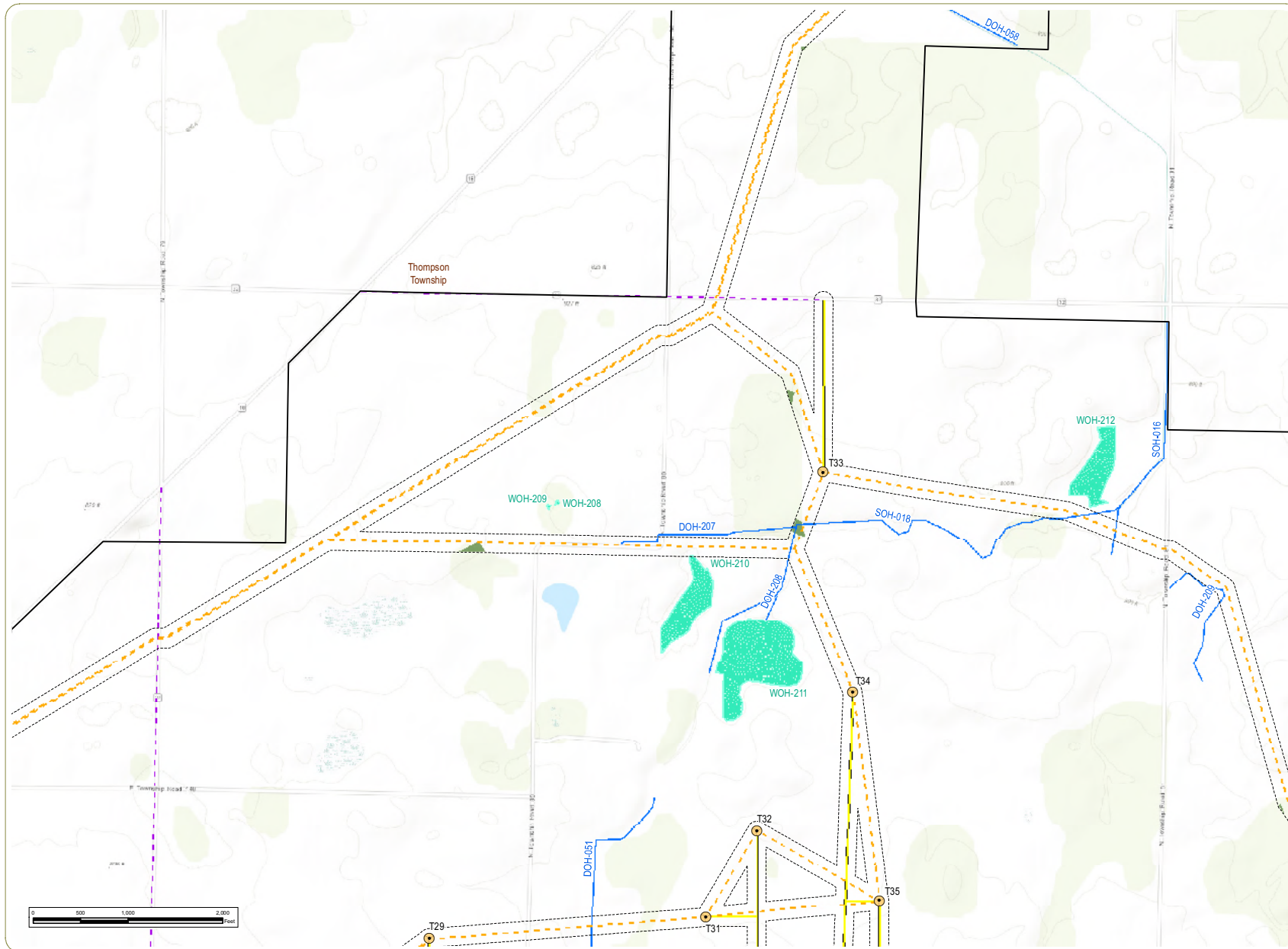
- Collection Line
- Delineated Stream
- Delineated Wetland
- - - 100-Foot Limit of Disturbance
- ▭ Project Boundary
- ▭ Township Boundary
- ▭ County Boundary
- Undeveloped Land
- Deciduous Forest
- Grassland/Herbaceous



Sheet 8 of 18

Notes: 1. Basemap: ESRI ArcGIS Online "World Topographic Map" map service. 2. This map was generated in ArcMap on December 13, 2018. 3. This is a color graphic. Reproduction in grayscale may misrepresent the data. 4. Project Components provided by Apex; Delineated water resources data provided Cardno. Vegetative communities derived from ODNR land cover data. 5. Map Scale 1:12,000.



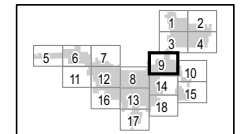


Republic Wind Farm

Adams, Pleasant, Reed, Scipio, and Thompson Townships, Seneca County, and York Township, Sandusky County, Ohio

Figure 08-4: Delineated Resources

- Wind Turbine
- Access Road
- Collection Line
- Local Delivery Route
- Delineated Stream
- Delineated Wetland
- 100-Foot Limit of Disturbance
- Project Boundary
- Township Boundary
- County Boundary
- Undeveloped Land
- Deciduous Forest

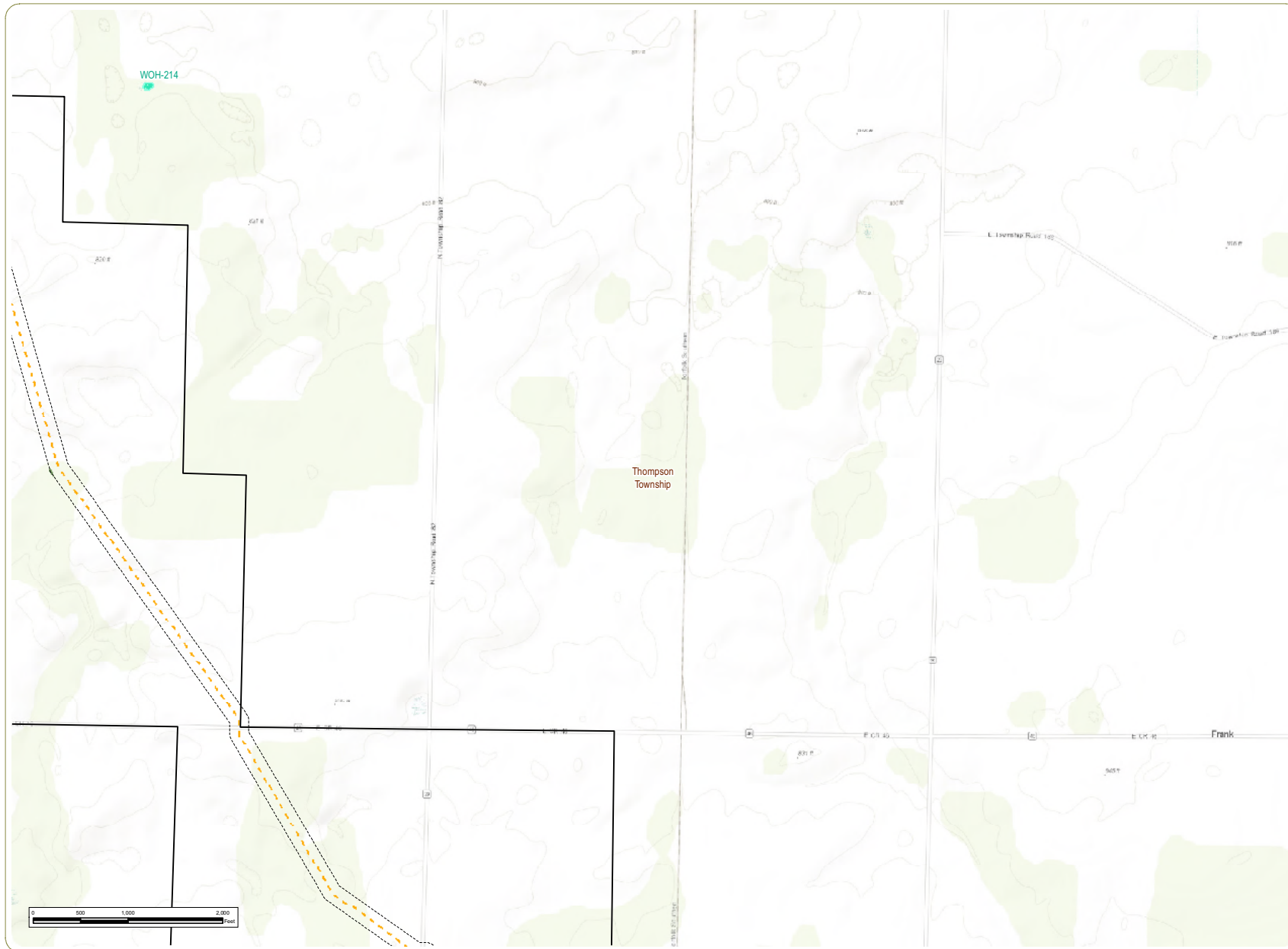


Sheet 9 of 18

Notes: 1. Basemap: ESRI ArcGIS Online "World Topographic Map" map service. 2. This map was generated in ArcMap on December 13, 2018. 3. This is a color graphic. Reproduction in grayscale may misrepresent the data. 4. Project Components provided by Apex; Delineated water resources data provided Cardno. Vegetative communities derived from ODNR land cover data. 5. Map Scale 1:12,000.



www.edrdpc.com

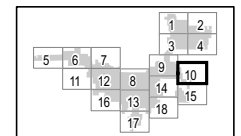


Republic Wind Farm

Adams, Pleasant, Reed, Scipio, and Thompson Townships, Seneca County, and York Township, Sandusky County, Ohio

Figure 08-4: Delineated Resources

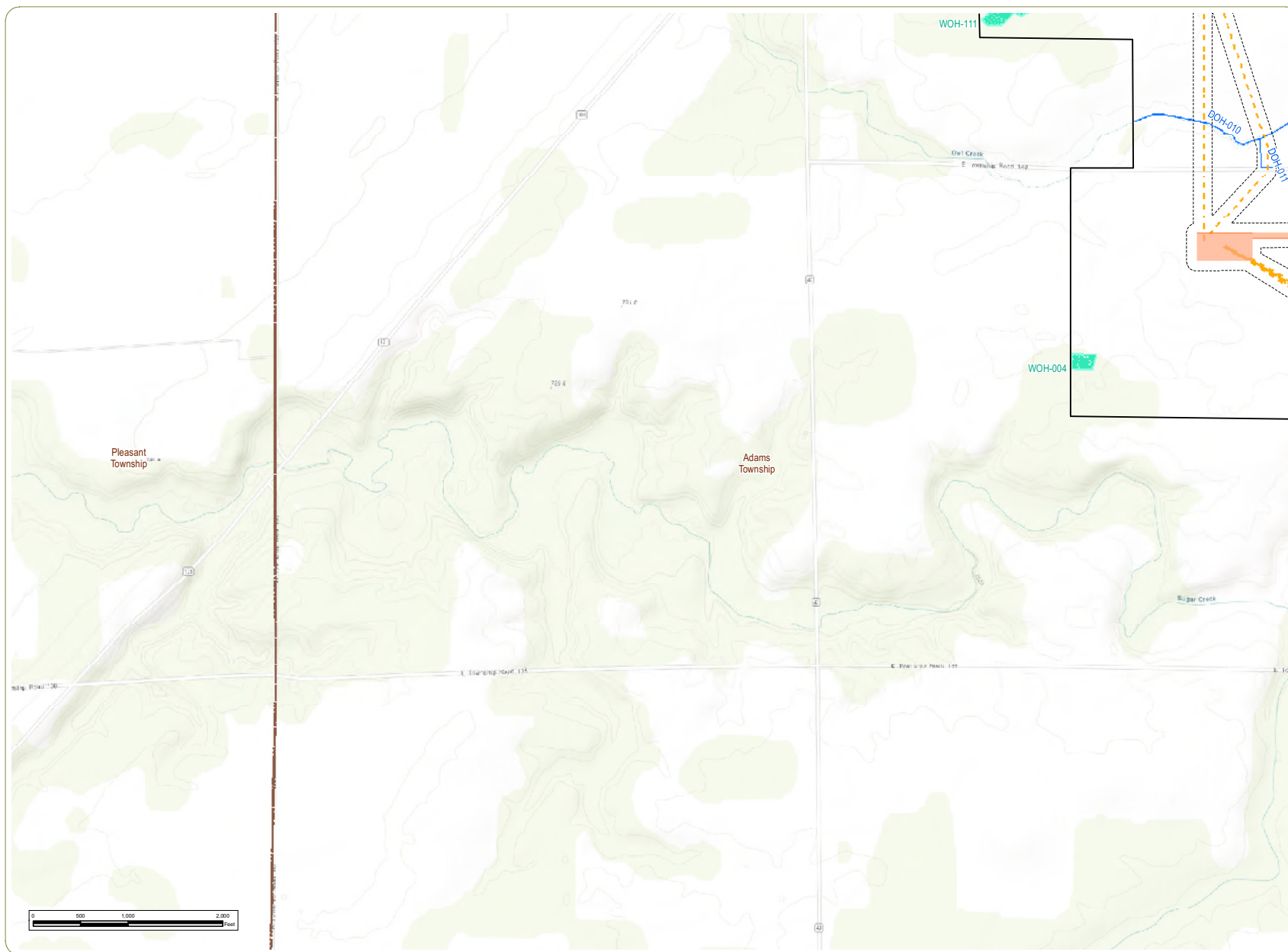
- Collection Line
- Delineated Wetland
- - - 100-Foot Limit of Disturbance
- ▬ Project Boundary
- ▬ Township Boundary
- ▬ County Boundary
- Undeveloped Land
- Deciduous Forest



Sheet 10 of 18

Notes: 1. Basemap: ESRI ArcGIS Online "World Topographic Map" map service. 2. This map was generated in ArcMap on December 13, 2018. 3. This is a color graphic. Reproduction in grayscale may misrepresent the data. 4. Project Components provided by Apex; Delineated water resources data provided Cardno. Vegetative communities derived from ODNR land cover data. 5. Map Scale 1:12,000.



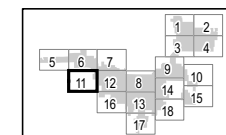


Republic Wind Farm

Adams, Pleasant, Reed, Scipio, and Thompson Townships, Seneca County, and York Township, Sandusky County, Ohio

Figure 08-4: Delineated Resources

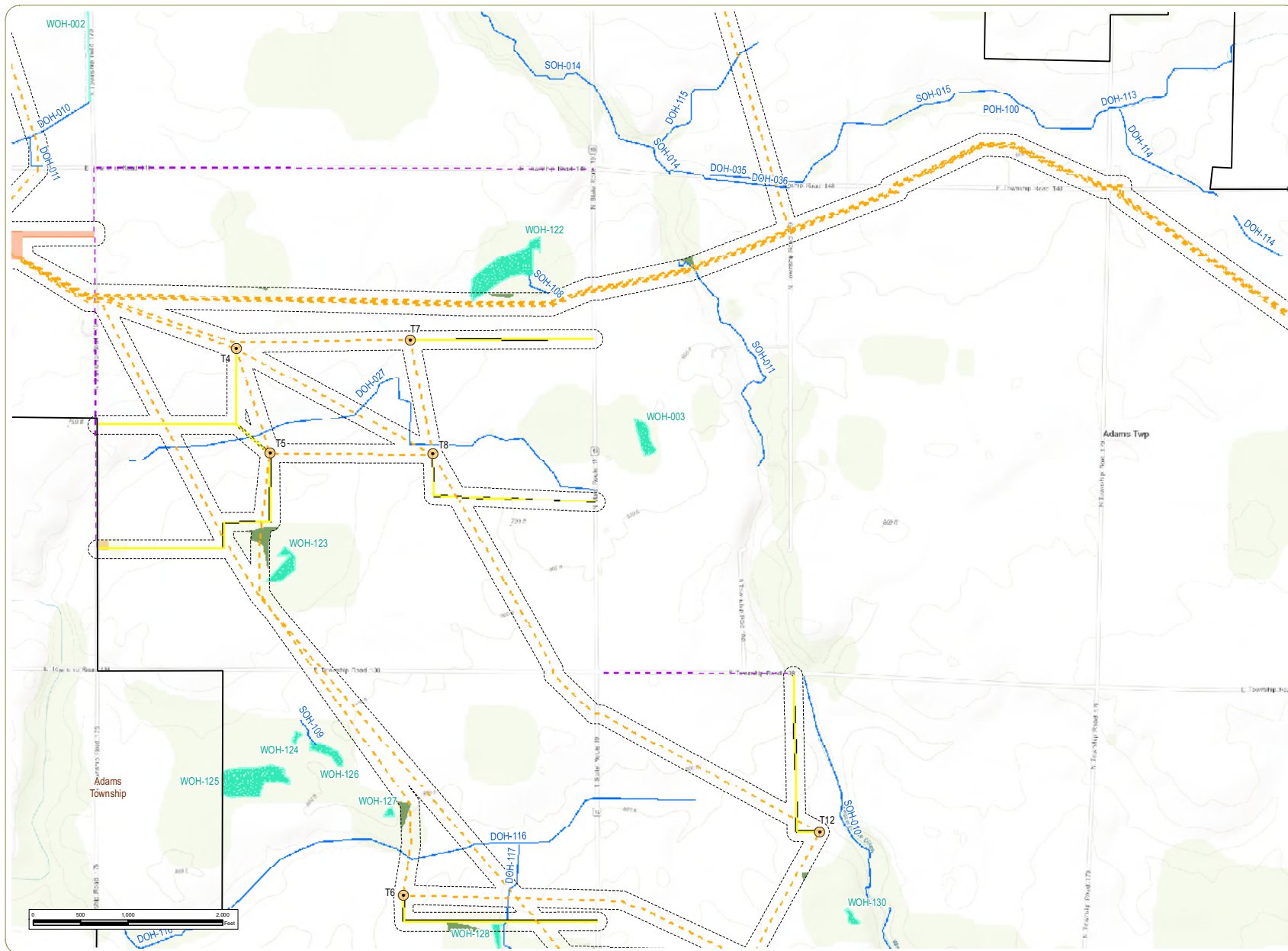
- Collection Line
- Delineated Stream
- Collection Substation
- Delineated Wetland
- 100-Foot Limit of Disturbance
- Project Boundary
- Township Boundary
- County Boundary



Sheet 11 of 18

Notes: 1. Basemap: ESRI ArcGIS Online "World Topographic Map" map service. 2. This map was generated in ArcMap on December 13, 2018. 3. This is a color graphic. Reproduction in grayscale may misrepresent the data. 4. Project Components provided by Apex; Delineated water resources data provided Cardno. Vegetative communities derived from ODNR land cover data. 5. Map Scale 1:12,000.



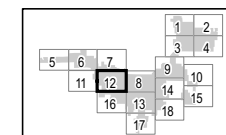


Republic Wind Farm

Adams, Pleasant, Reed, Scipio, and Thompson Townships, Seneca County, and York Township, Sandusky County, Ohio

Figure 08-4: Delineated Resources

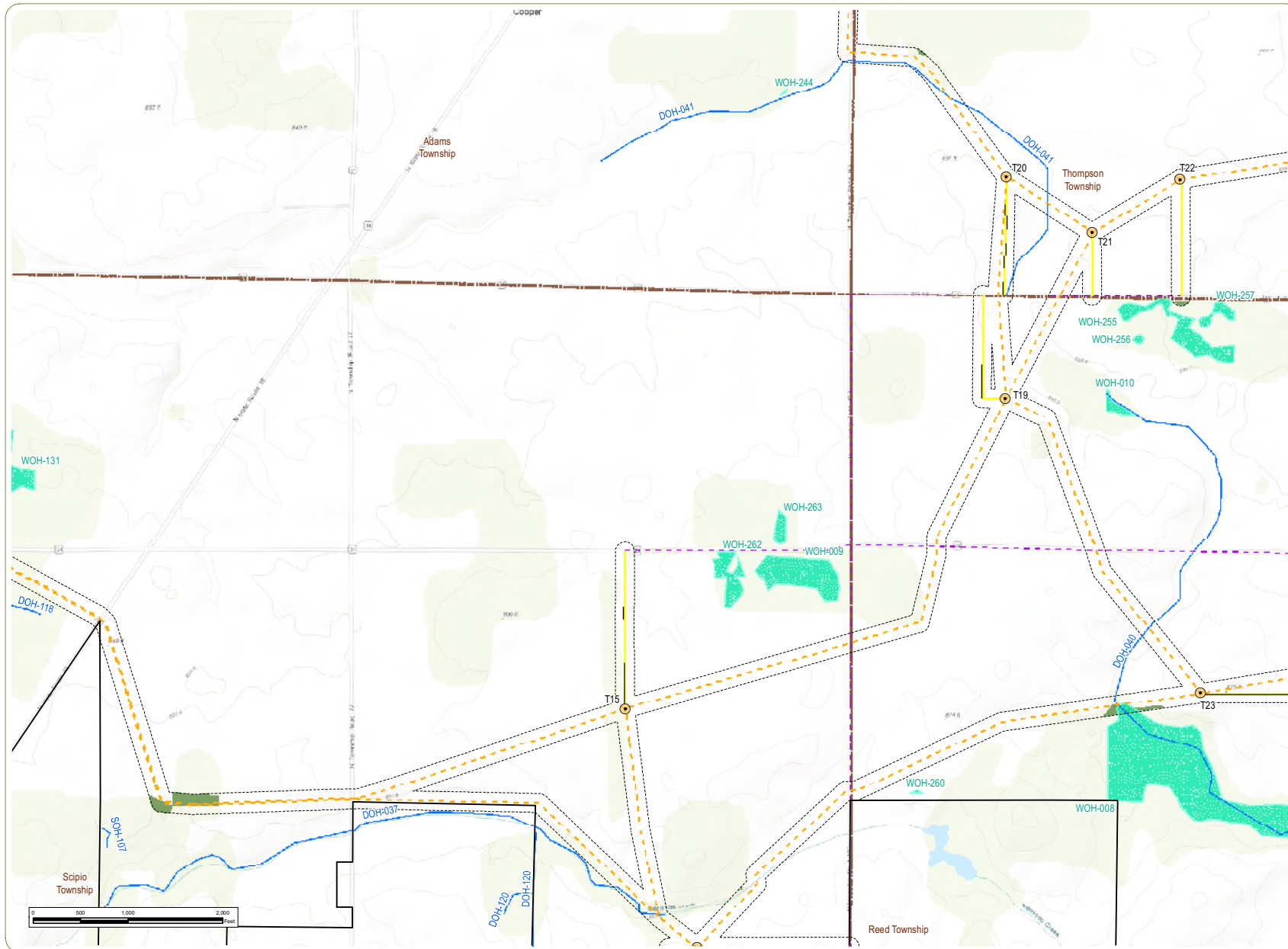
- Wind Turbine
- Access Road
- Collection Line
- Local Delivery Route
- Delineated Stream
- Collection Substation
- Delineated Waterbody
- Delineated Wetland
- 100-Foot Limit of Disturbance
- Project Boundary
- Township Boundary
- County Boundary
- Undeveloped Land
- Deciduous Forest
- Grassland/Herbaceous



Sheet 12 of 18

Notes: 1. Basemap: ESRI ArcGIS Online "World Topographic Map" map service. 2. This map was generated in ArcMap on December 13, 2018. 3. This is a color graphic. Reproduction in grayscale may misrepresent the data. 4. Project Components provided by Apex; Delineated water resources data provided Cardno. Vegetative communities derived from ODNR land cover data. 5. Map Scale 1:12,000.



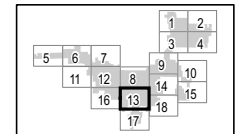


Republic Wind Farm

Adams, Pleasant, Reed, Scipio, and Thompson Townships, Seneca County, and York Township, Sandusky County, Ohio

Figure 08-4: Delineated Resources

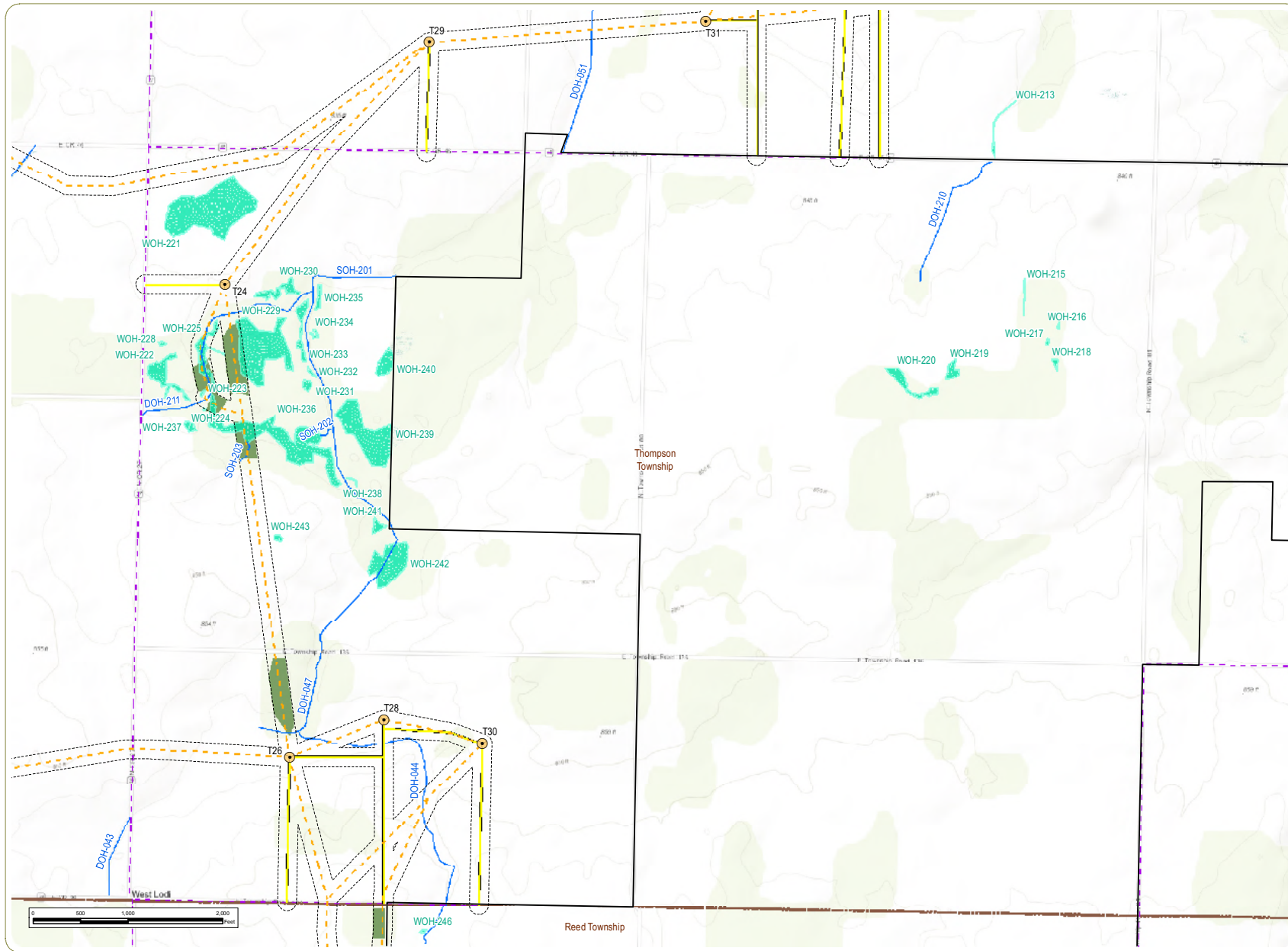
- Wind Turbine
- Access Road
- Collection Line
- Local Delivery Route
- Delineated Stream
- Delineated Wetland
- 100-Foot Limit of Disturbance
- Project Boundary
- Township Boundary
- County Boundary
- Undeveloped Land
- Deciduous Forest



Sheet 13 of 18

Notes: 1. Basemap: ESRI ArcGIS Online "World Topographic Map" map service. 2. This map was generated in ArcMap on December 13, 2018. 3. This is a color graphic. Reproduction in grayscale may misrepresent the data. 4. Project Components provided by Apex; Delineated water resources data provided Cardno. Vegetative communities derived from ODN land cover data. 5. Map Scale 1:12,000.





Republic Wind Farm

Adams, Pleasant, Reed, Scipio, and Thompson Townships, Seneca County, and York Township, Sandusky County, Ohio

Figure 08-4: Delineated Resources

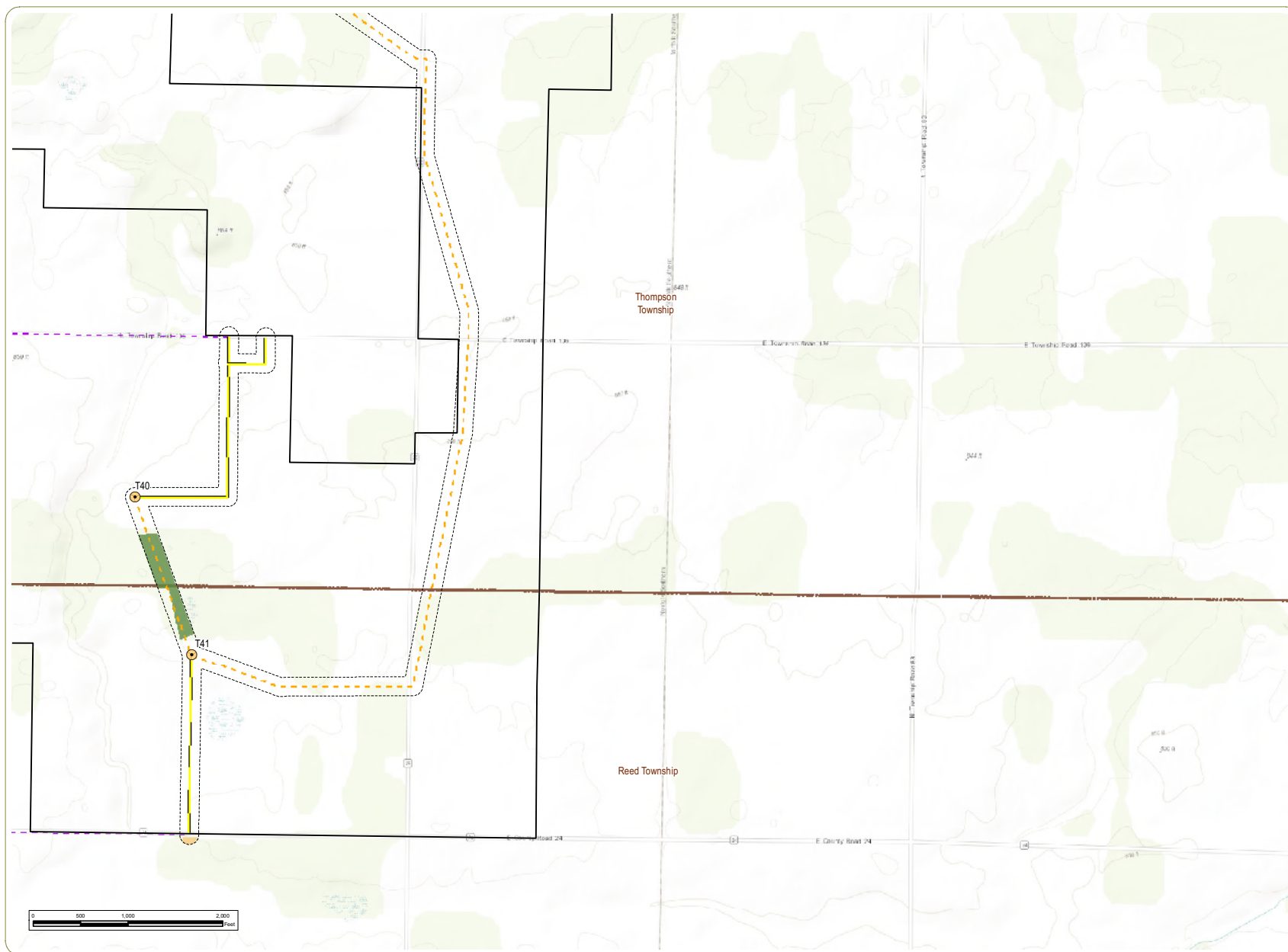
- Wind Turbine
- Access Road
- Collection Line
- Local Delivery Route
- Delineated Stream
- Delineated Wetland
- 100-Foot Limit of Disturbance
- Project Boundary
- Township Boundary
- County Boundary
- Undeveloped Land
- Deciduous Forest



Sheet 14 of 18

Notes: 1. Basemap: ESRI ArcGIS Online "World Topographic Map" map service.
2. This map was generated in ArcMap on December 13, 2018. 3. This is a color graphic. Reproduction in grayscale may misrepresent the data. 4. Project Components provided by Apex; Delineated water resources data provided Cardno. Vegetative communities derived from ODNR land cover data. 5. Map Scale 1:12,000.



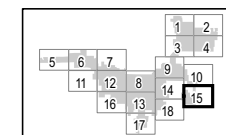


Republic Wind Farm

Adams, Pleasant, Reed, Scipio, and Thompson Townships, Seneca County, and York Township, Sandusky County, Ohio

Figure 08-4: Delineated Resources

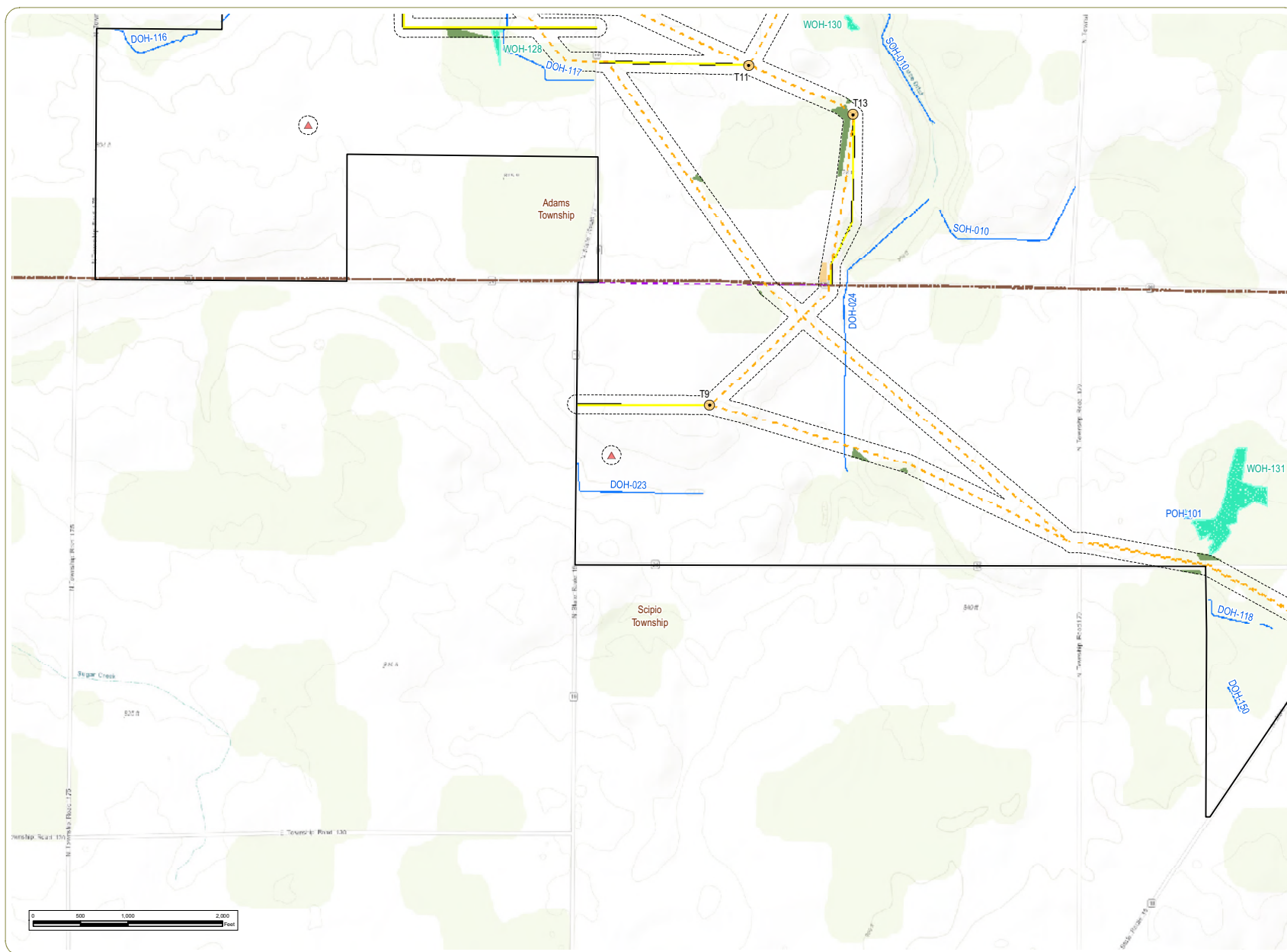
- Wind Turbine
- Access Road
- - - Collection Line
- - - Local Delivery Route
- - - 100-Foot Limit of Disturbance
- ▭ Project Boundary
- ▭ Township Boundary
- ▭ County Boundary
- Undeveloped Land
- Deciduous Forest
- Grassland/Herbaceous



Sheet 15 of 18

Notes: 1. Basemap: ESRI ArcGIS Online "World Topographic Map" map service. 2. This map was generated in ArcMap on December 13, 2018. 3. This is a color graphic. Reproduction in grayscale may misrepresent the data. 4. Project Components provided by Apex; Delineated water resources data provided Cardno. Vegetative communities derived from ODNR land cover data. 5. Map Scale 1:12,000.



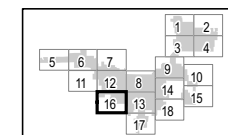


Republic Wind Farm

Adams, Pleasant, Reed, Scipio, and Thompson Townships, Seneca County, and York Township, Sandusky County, Ohio

Figure 08-4: Delineated Resources

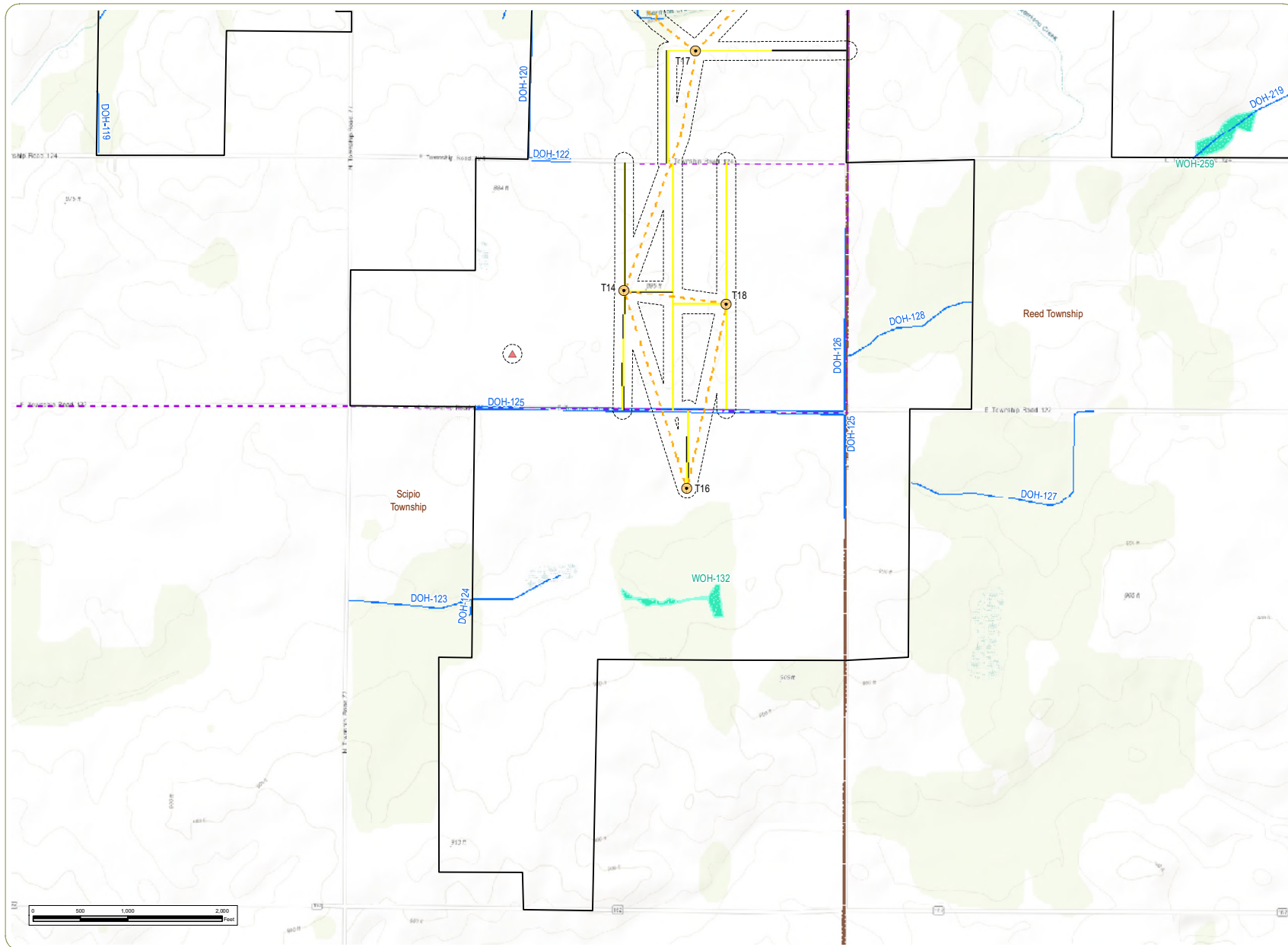
- Wind Turbine
- Met Tower
- Access Road
- Collection Line
- Local Delivery Route
- Delineated Stream
- Delineated Waterbody
- Delineated Wetland
- 100-Foot Limit of Disturbance
- Project Boundary
- Township Boundary
- County Boundary
- Undeveloped Land
- Deciduous Forest
- Grassland/Herbaceous



Sheet 16 of 18

Notes: 1. Basemap: ESRI ArcGIS Online "World Topographic Map" map service. 2. This map was generated in ArcMap on December 13, 2018. 3. This is a color graphic. Reproduction in grayscale may misrepresent the data. 4. Project Components provided by Apex; Delineated water resources data provided Cardno. Vegetative communities derived from ODNR land cover data. 5. Map Scale 1:12,000.



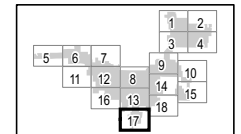


Republic Wind Farm

Adams, Pleasant, Reed, Scipio, and Thompson Townships, Seneca County, and York Township, Sandusky County, Ohio

Figure 08-4: Delineated Resources

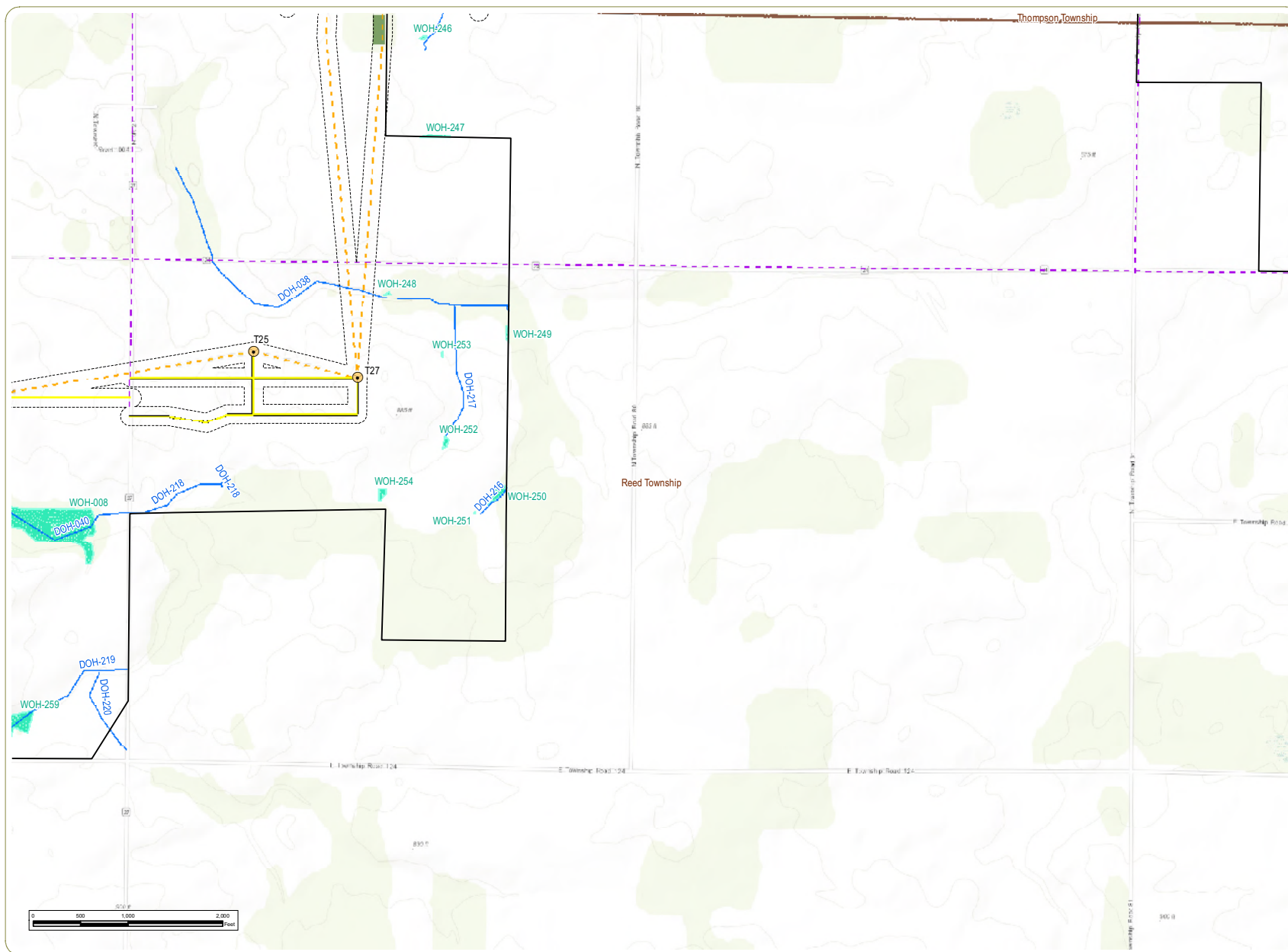
- Wind Turbine
- Met Tower
- Access Road
- Collection Line
- Local Delivery Route
- Delineated Stream
- Delineated Wetland
- 100-Foot Limit of Disturbance
- Project Boundary
- Township Boundary
- County Boundary



Sheet 17 of 18

Notes: 1. Basemap: ESRI ArcGIS Online "World Topographic Map" map service. 2. This map was generated in ArcMap on December 13, 2018. 3. This is a color graphic. Reproduction in grayscale may misrepresent the data. 4. Project Components provided by Apex; Delineated water resources data provided Cardno. Vegetative communities derived from ODNR land cover data. 5. Map Scale 1:12,000.



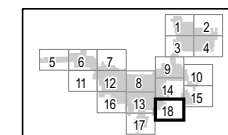


Republic Wind Farm

Adams, Pleasant, Reed, Scipio, and Thompson Townships, Seneca County, and York Township, Sandusky County, Ohio

Figure 08-4: Delineated Resources

- Wind Turbine
- Access Road
- Collection Line
- Local Delivery Route
- Delineated Stream
- Delineated Wetland
- 100-Foot Limit of Disturbance
- Project Boundary
- Township Boundary
- County Boundary
- Undeveloped Land
- Deciduous Forest



Sheet 18 of 18

Notes: 1. Basemap: ESRI ArcGIS Online "World Topographic Map" map service. 2. This map was generated in ArcMap on December 13, 2018. 3. This is a color graphic. Reproduction in grayscale may misrepresent the data. 4. Project Components provided by Apex; Delineated water resources data provided Cardno. Vegetative communities derived from ODNR land cover data. 5. Map Scale 1:12,000.



This foregoing document was electronically filed with the Public Utilities

Commission of Ohio Docketing Information System on

12/26/2018 11:47:44 AM

in

Case No(s). 12-2295-EL-REN

Summary: Application Figures 08-4 electronically filed by Teresa Orahod on behalf of Dylan F. Borchers