

Republic Wind Farm

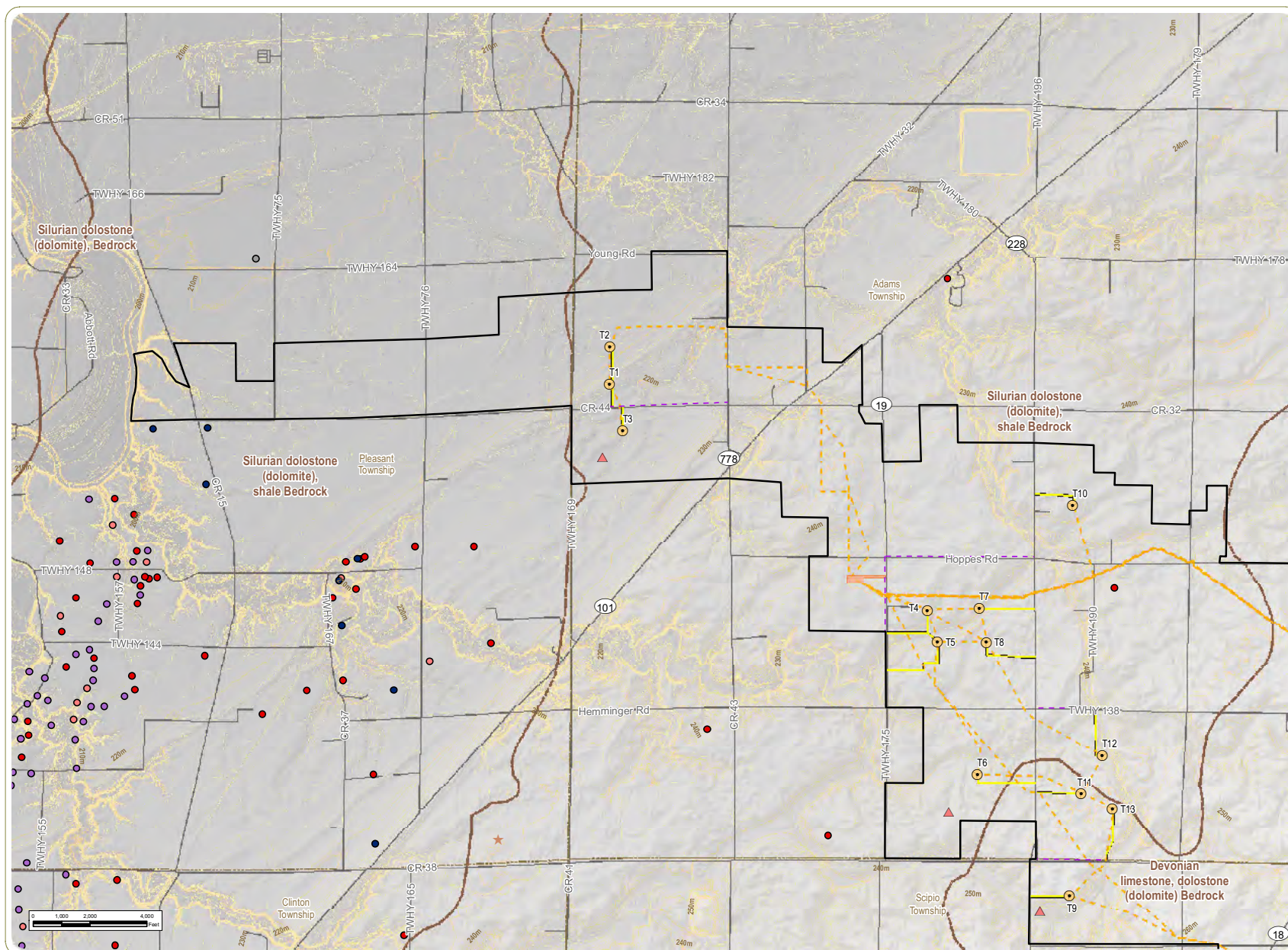
Adams, Pleasant, Reed, Scipio, and Thompson Townships, Seneca County, and York Township, Sandusky County, Ohio

Figure 08-1: Drinking Water Resources

- Water Well
- Project Boundary
- County Boundary
- ▨ Corridor Management Zone
- ▨ Emergency Management Zone
- ▨ Source Water Area Watershed
- ▨ Source Water Protection Area
- Unconsolidated Aquifer
- Defiance End Moraine Aquifer
- Green Creek Buried Valley Aquifer
- Lake Maumee Beach Ridge Aquifer
- Lake Maumee Lacustrine Aquifer
- Sandusky River Alluvial Aquifer
- Tiffin Ground Moraine Aquifer
- Tiffin Thin Upland Aquifer

Notes: 1. Basemap: ESRI StreetMap North America, 2008. 2. This map was generated in ArcMap on December 13, 2018. 3. This is a color graphic. Reproduction in grayscale may misrepresent the data. 4. Project Boundary provided by Apex; water well and aquifer data obtained from ODNR; source water protection areas and management zones obtained from OEPA. 5. Map Scale 1: 85,000.



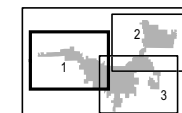


Republic Wind Farm

Adams, Pleasant, Reed, Scipio, and Thompson Townships, Seneca County, and York Township, Sandusky County, Ohio

Figure 08-2: Existing Geological Features

- Wind Turbine
- Met Tower
- Oil and Gas Well
 - Dry Hole
 - Expired permit
 - Oil Well
 - Plugged Oil or Gas Well
 - Unknown Well Status
 - Permitted Well Location
- Access Road
- Collection Line
- Local Delivery Route
- 10-Meter Topographic Contour
- 1-Meter Topographic Contour
- Collection Substation
- Project Boundary
- Township Boundary
- County Boundary
- Bedrock Unit Boundary

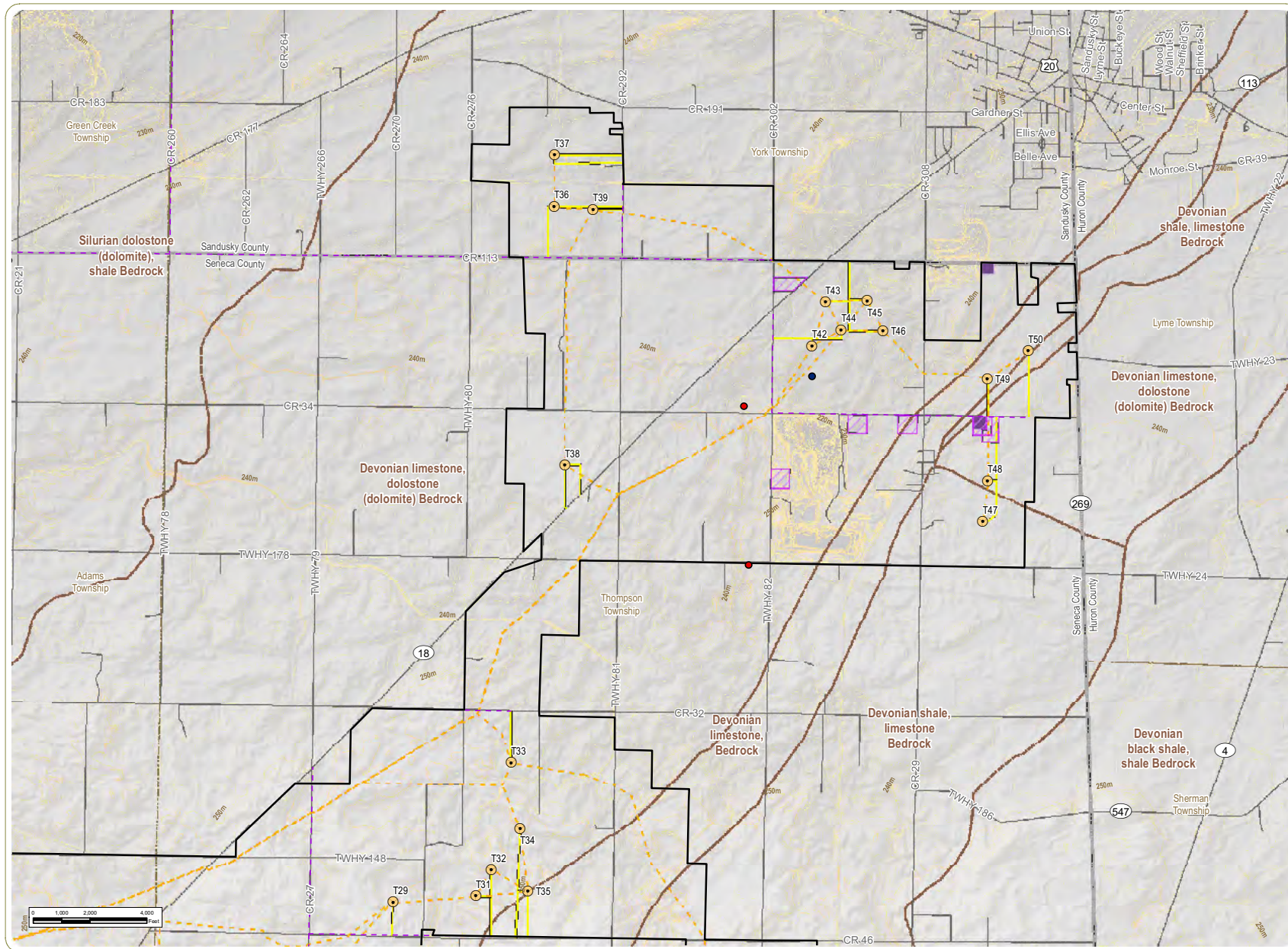


Sheet 1 of 3

Notes: 1. Basemap: Hillshade derived from OGRIP digital elevation model data. 2. This map was generated in ArcMap on December 13, 2018. 3. This is a color graphic. Reproduction in grayscale may misrepresent the data. 4. Project components provided by Apex; contours calculated by EDR; bedrock data obtained from USGS; oil and gas wells obtained from ODNR. 5. Map Scale 1: 40,000.



www.edrdpc.com



Republic Wind Farm

Adams, Pleasant, Reed, Scipio, and Thompson Townships, Seneca County, and York Township, Sandusky County, Ohio

Figure 08-2: Existing Geological Features

- Wind Turbine
- Oil and Gas Well
- Dry Hole
- Expired permit
- Access Road
- Collection Line
- Local Delivery Route
- 10-Meter Topographic Contour
- 1-Meter Topographic Contour
- Laydown Yard
- O&M Facility
- Project Boundary
- Township Boundary
- County Boundary
- Bedrock Unit Boundary

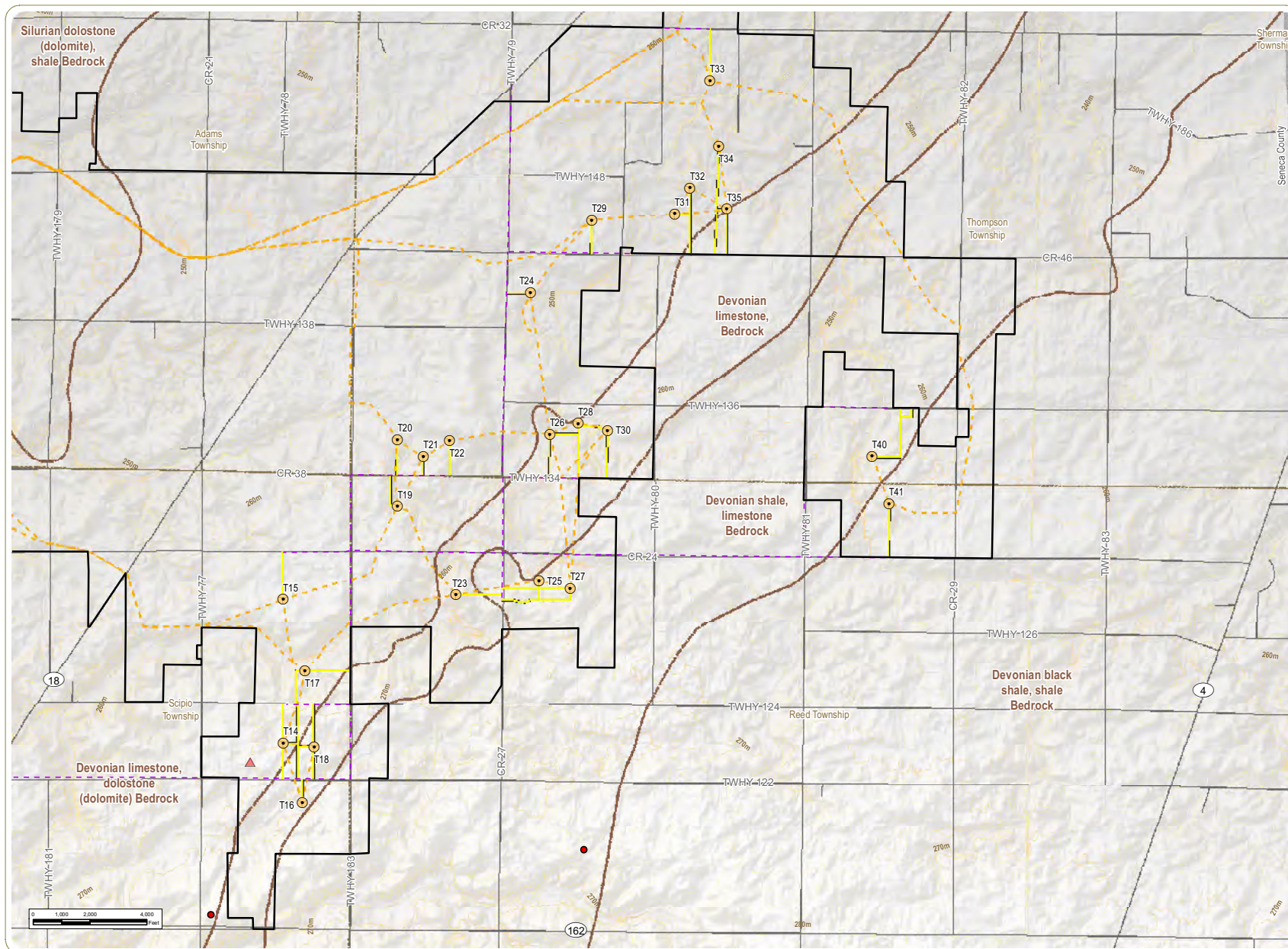


Sheet 2 of 3

Notes: 1. Basemap: Hillshade derived from OGRIP digital elevation model data. 2. This map was generated in ArcMap on December 13, 2018. 3. This is a color graphic. Reproduction in grayscale may misrepresent the data. 4. Project components provided by Apex; contours calculated by EDR; bedrock data obtained from USGS; oil and gas wells obtained from ODNR. 5. Map Scale 1: 40,000.



www.edrdpc.com

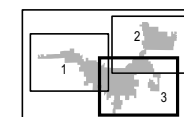


Republic Wind Farm

Adams, Pleasant, Reed, Scipio, and Thompson Townships, Seneca County, and York Township, Sandusky County, Ohio

Figure 08-2: Existing Geological Features

- Wind Turbine
- ▲ Met Tower
- Oil and Gas Well
- Dry Hole
- Access Road
- - - Collection Line
- - - Local Delivery Route
- 10-Meter Topographic Contour
- - - 1-Meter Topographic Contour
- Project Boundary
- Township Boundary
- County Boundary
- Bedrock Unit Boundary

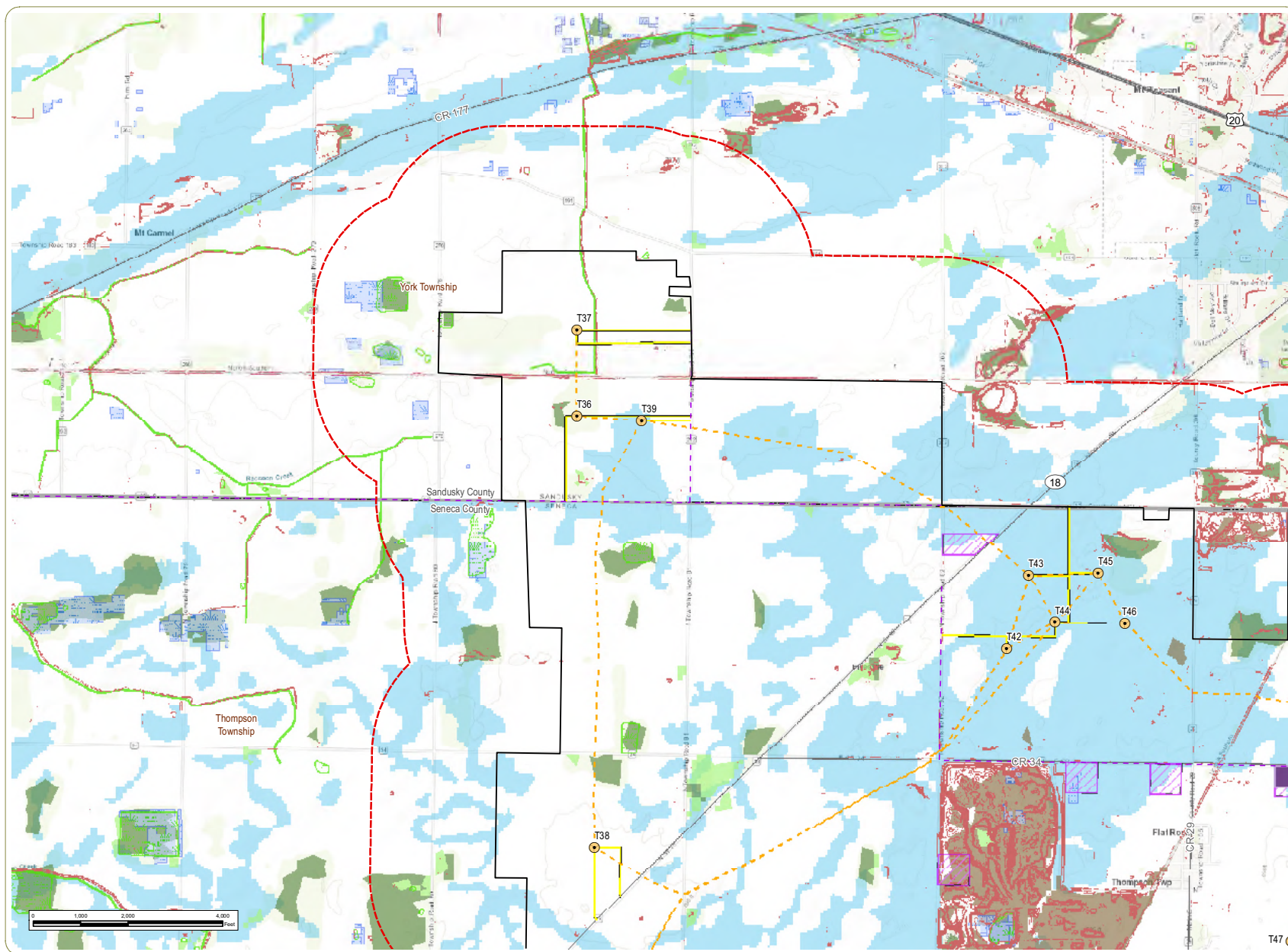


Sheet 3 of 3

Notes: 1. Basemap: Hillshade derived from OGRIP digital elevation model data. 2. This map was generated in ArcMap on December 13, 2018. 3. This is a color graphic. Reproduction in grayscale may misrepresent the data. 4. Project components provided by Apex; contours calculated by EDR; bedrock data obtained from USGS; oil and gas wells obtained from ODNR. 5. Map Scale 1:40,000.



www.edrdpc.com

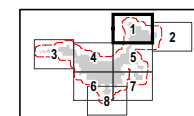


Republic Wind Farm

Adams, Pleasant, Reed, Scipio, and Thompson Townships, Seneca County, and York Township, Sandusky County, Ohio

Figure 08-3: Ecological Features

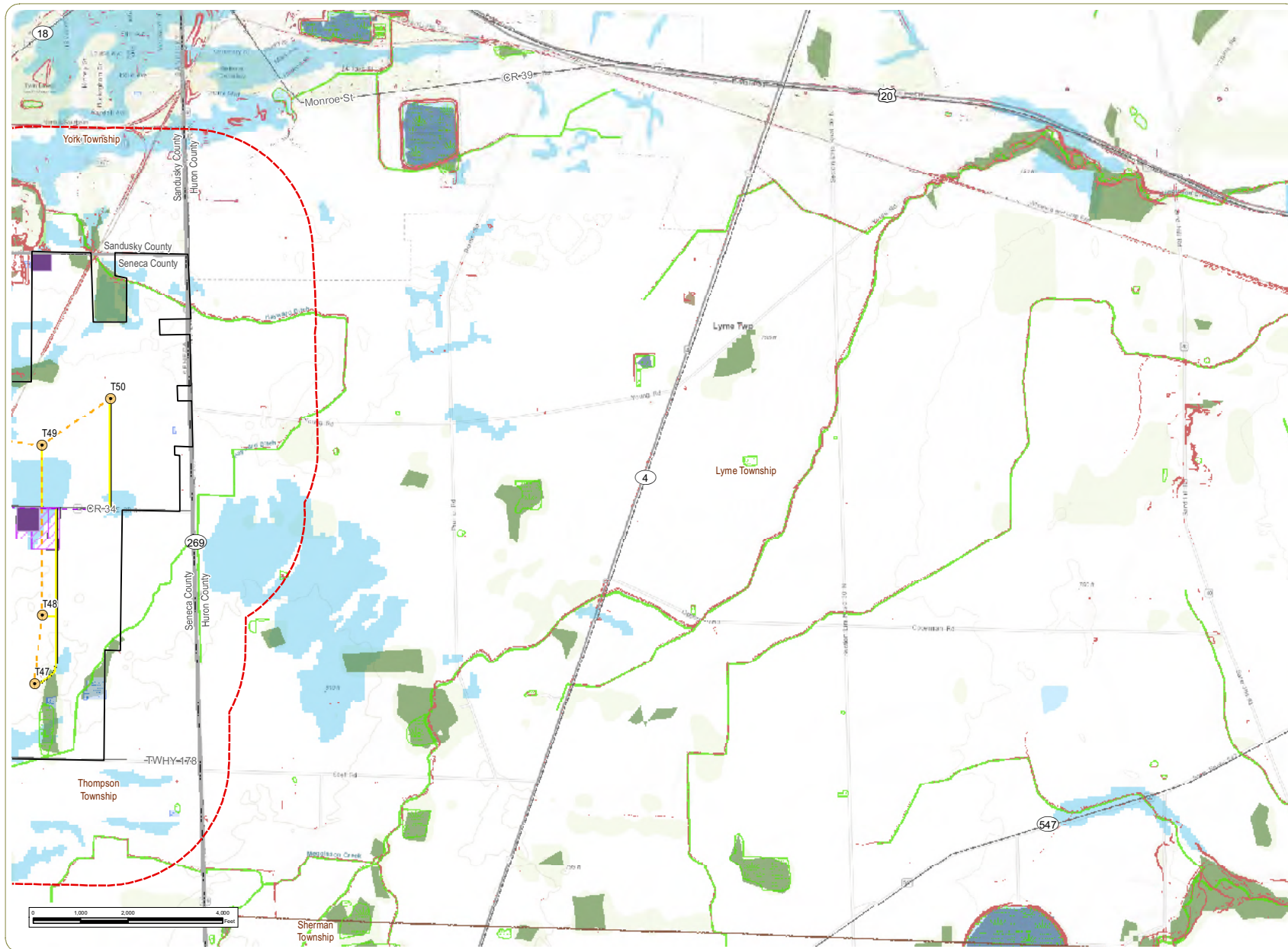
- Wind Turbine
- Access Road
- Collection Line
- Local Delivery Route
- Laydown Yard
- O&M Facility
- Highly Erodible Land
- Potentially Highly Erodible Land
- Slope >12%
- ODNR Mapped Wetland
- NWI Mapped Wetland
- Project Boundary
- Half Mile Study Area
- Township Boundary
- County Boundary
- Undeveloped Land
- Baren Land
- Forest
- Grassland/Herbaceous
- Open Water



Sheet 1 of 8

Notes: 1. Basemap: ESRI ArcGIS Online "World Topographic Map" map service. 2. This map was generated in ArcMap on December 13, 2018. 3. This is a color graphic. Reproduction in grayscale may misrepresent the data. 4. Project components provided by Apex; wetland data obtained from ODNR and NWI Wetland Mapper; highly erodible land obtained from ODNR. 5. Map Scale 1: 24,000.



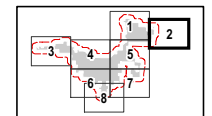


Republic Wind Farm

Adams, Pleasant, Reed, Scipio, and Thompson Townships, Seneca County, and York Township, Sandusky County, Ohio

Figure 08-3: Ecological Features

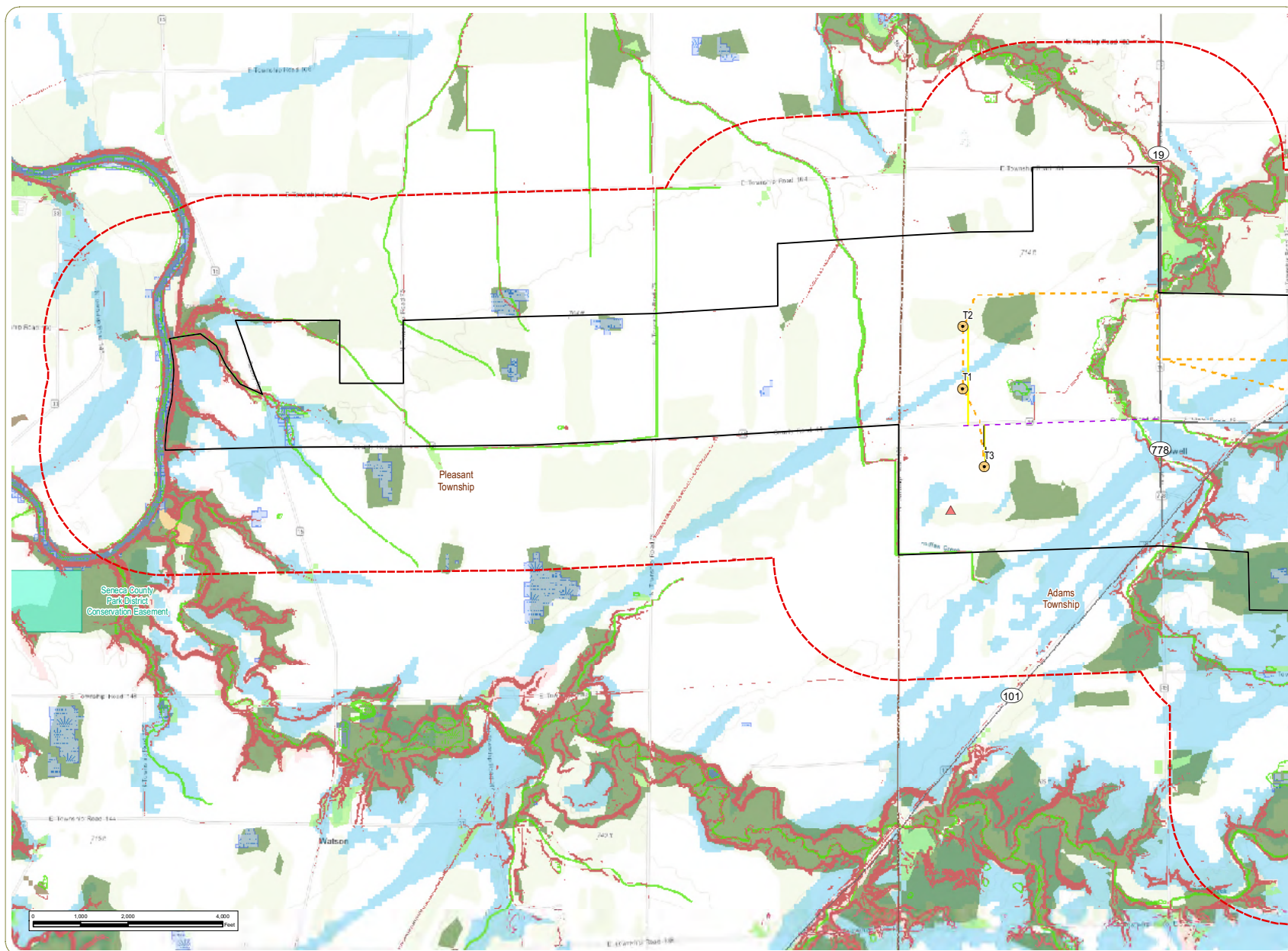
- Wind Turbine
- Access Road
- Collection Line
- Local Delivery Route
- Laydown Yard
- O&M Facility
- Highly Erodible Land
- Potentially Highly Erodible Land
- Slope >12%
- ODNR Mapped Wetland
- NWI Mapped Wetland
- Project Boundary
- Half Mile Study Area
- Township Boundary
- County Boundary
- Undeveloped Land
- Baren Land
- Forest
- Grassland/Herbaceous
- Open Water



Sheet 2 of 8

Notes: 1. Basemap: ESRI ArcGIS Online "World Topographic Map" map service. 2. This map was generated in ArcMap on December 13, 2018. 3. This is a color graphic. Reproduction in grayscale may misrepresent the data. 4. Project components provided by Apex; wetland data obtained from ODNR and NWI Wetland Mapper; highly erodible land obtained from ODNR. 5. Map Scale 1: 24,000.



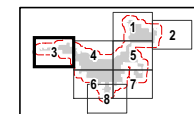


Republic Wind Farm

Adams, Pleasant, Reed, Scipio, and Thompson Townships, Seneca County, and York Township, Sandusky County, Ohio

Figure 08-3: Ecological Features

- Wind Turbine
- Met Tower
- Access Road
- Collection Line
- Local Delivery Route
- Highly Erodible Land
- Potentially Highly Erodible Land
- Slope >12%
- ODNR Mapped Wetland
- NWI Mapped Wetland
- Local Park
- Project Boundary
- Half Mile Study Area
- Township Boundary
- County Boundary
- Undeveloped Land
- Baren Land
- Forest
- Grassland/Herbaceous
- Open Water
- Shrub/Scrub

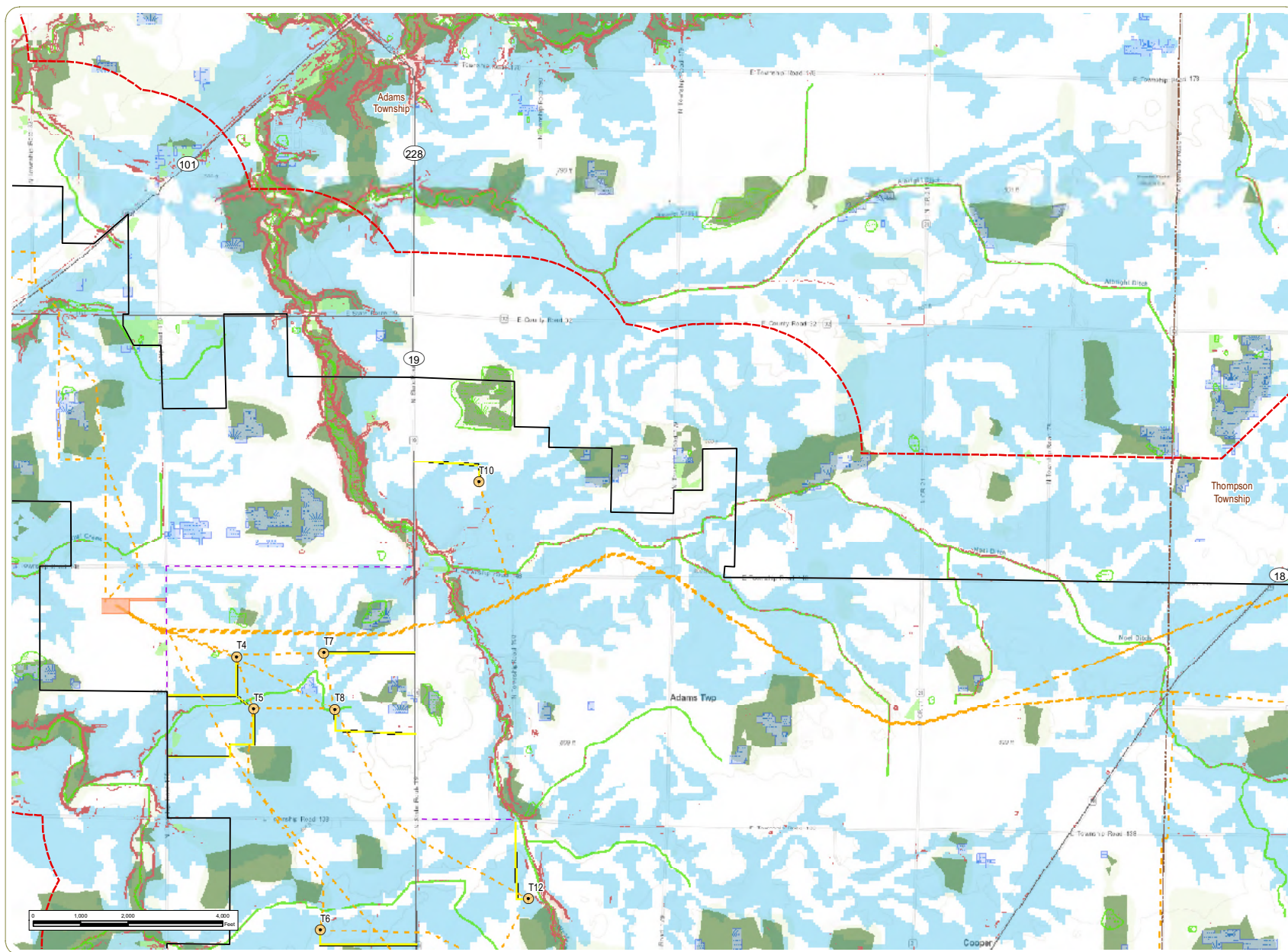


Sheet 3 of 8

Notes: 1. Basemap: ESRI ArcGIS Online "World Topographic Map" map service. 2. This map was generated in ArcMap on December 13, 2018. 3. This is a color graphic. Reproduction in grayscale may misrepresent the data. 4. Project components provided by Apex; wetland data obtained from ODNR and NWI Wetland Mapper; highly erodible land obtained from ODNR. 5. Map Scale 1: 24,000.



www.edrdpc.com

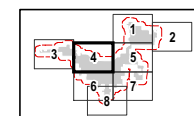


Republic Wind Farm

Adams, Pleasant, Reed, Scipio, and Thompson Townships, Seneca County, and York Township, Sandusky County, Ohio

Figure 08-3: Ecological Features

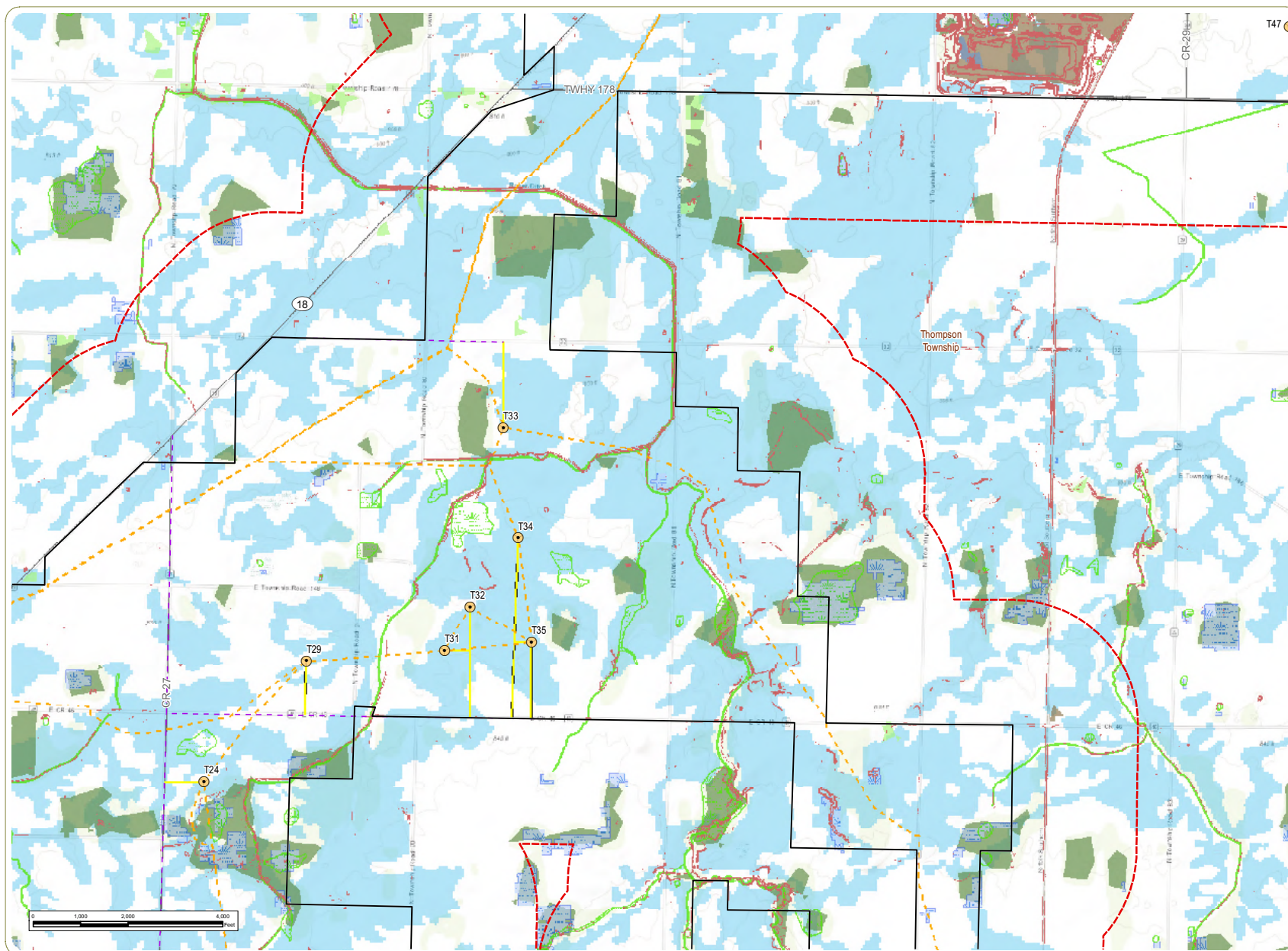
- Wind Turbine
- Access Road
- Collection Line
- Local Delivery Route
- Collection Substation
- Highly Erodible Land
- Potentially Highly Erodible Land
- Slope >12%
- ODNR Mapped Wetland
- NWI Mapped Wetland
- Project Boundary
- Half Mile Study Area
- Township Boundary
- County Boundary
- Undeveloped Land
- Forest
- Grassland/Herbaceous



Sheet 4 of 8

Notes: 1. Basemap: ESRI ArcGIS Online "World Topographic Map" map service. 2. This map was generated in ArcMap on December 13, 2018. 3. This is a color graphic. Reproduction in grayscale may misrepresent the data. 4. Project components provided by Apex; wetland data obtained from ODNR and NWI Wetland Mapper; highly erodible land obtained from ODNR. 5. Map Scale 1: 24,000.



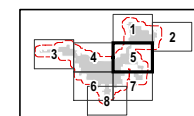


Republic Wind Farm

Adams, Pleasant, Reed, Scipio, and Thompson Townships, Seneca County, and York Township, Sandusky County, Ohio

Figure 08-3: Ecological Features

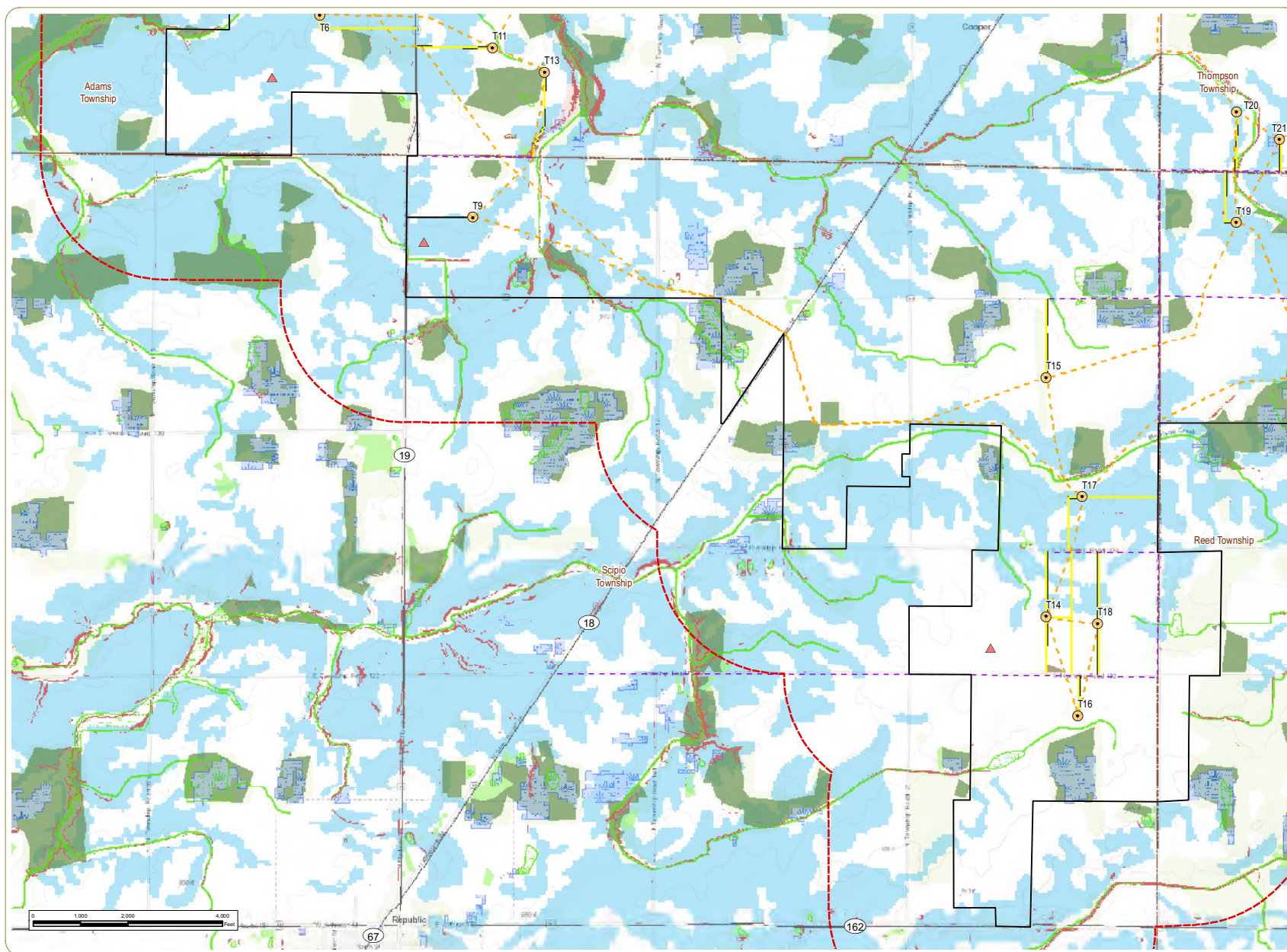
- Wind Turbine
- Access Road
- Collection Line
- Local Delivery Route
- Highly Erodible Land
- Potentially Highly Erodible Land
- Slope >12%
- ODNR Mapped Wetland
- NWI Mapped Wetland
- Project Boundary
- Half Mile Study Area
- Township Boundary
- County Boundary
- Undeveloped Land
- Bare Land
- Forest
- Grassland/Herbaceous
- Open Water



Sheet 5 of 8

Notes: 1. Basemap: ESRI ArcGIS Online "World Topographic Map" map service. 2. This map was generated in ArcMap on December 13, 2016. 3. This is a color graphic. Reproduction in grayscale may misrepresent the data. 4. Project components provided by Apex; wetland data obtained from ODNR and NWI Wetland Mapper; highly erodible land obtained from ODNR. 5. Map Scale 1: 24,000.



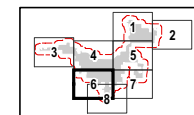


Republic Wind Farm

Adams, Pleasant, Reed, Scipio, and Thompson Townships, Seneca County, and York Township, Sandusky County, Ohio

Figure 08-3: Ecological Features

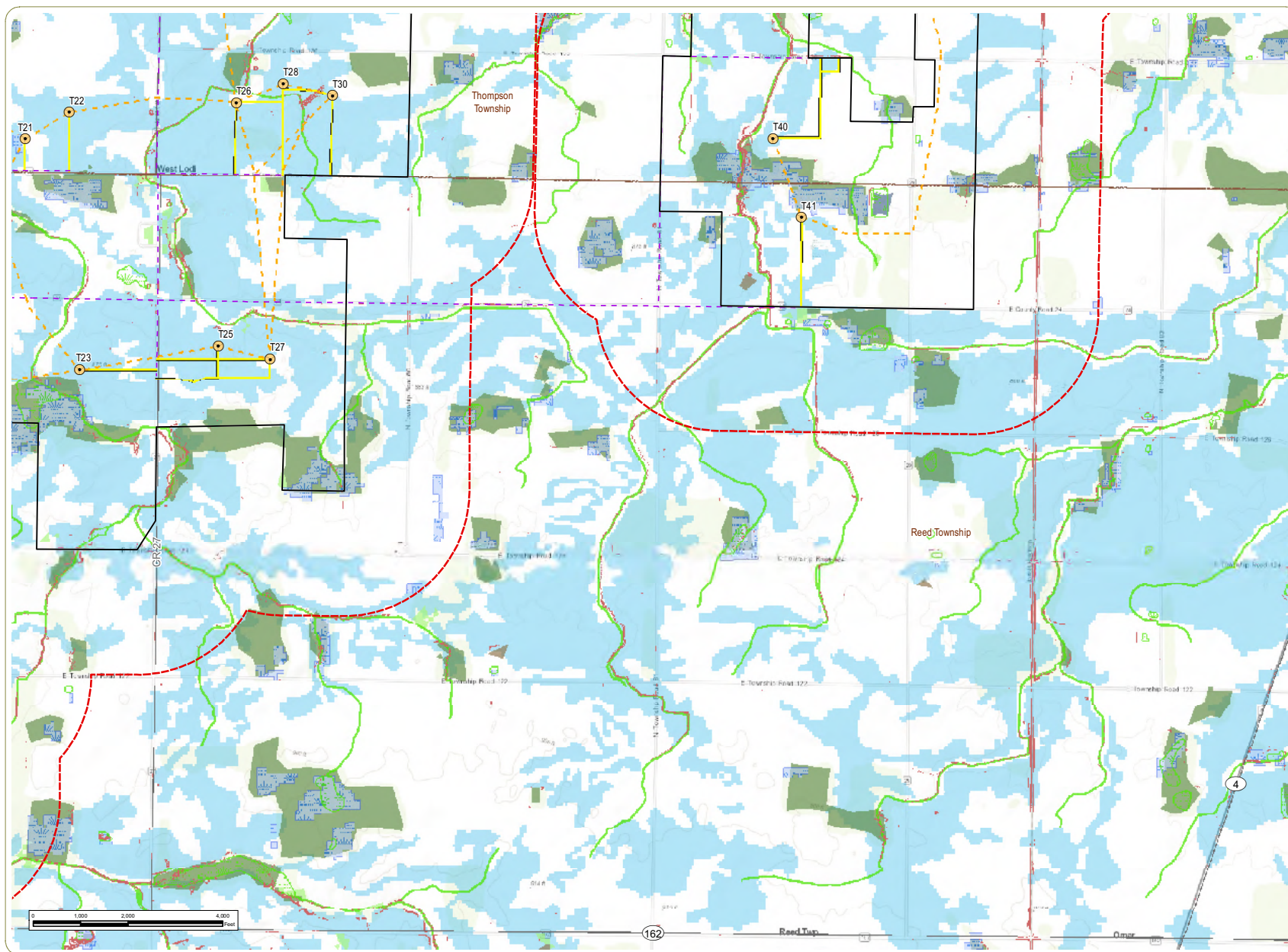
- Wind Turbine
- Met Tower
- Access Road
- Collection Line
- Local Delivery Route
- Highly Erodible Land
- Potentially Highly Erodible Land
- Slope >12%
- ODNR Mapped Wetland
- NWI Mapped Wetland
- Project Boundary
- Half Mile Study Area
- Township Boundary
- County Boundary
- Undeveloped Land
- Bare Land
- Forest
- Grassland/Herbaceous
- Open Water



Sheet 6 of 8

Notes: 1. Basemap: ESRI ArcGIS Online "World Topographic Map" map service. 2. This map was generated in ArcMap on December 13, 2018. 3. This is a color graphic. Reproduction in grayscale may misrepresent the data. 4. Project components provided by Apex; wetland data obtained from ODNR and NWI Wetland Mapper; highly erodible land obtained from ODNR. 5. Map Scale 1: 24,000.



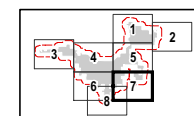


Republic Wind Farm

Adams, Pleasant, Reed, Scipio, and Thompson Townships, Seneca County, and York Township, Sandusky County, Ohio

Figure 08-3: Ecological Features

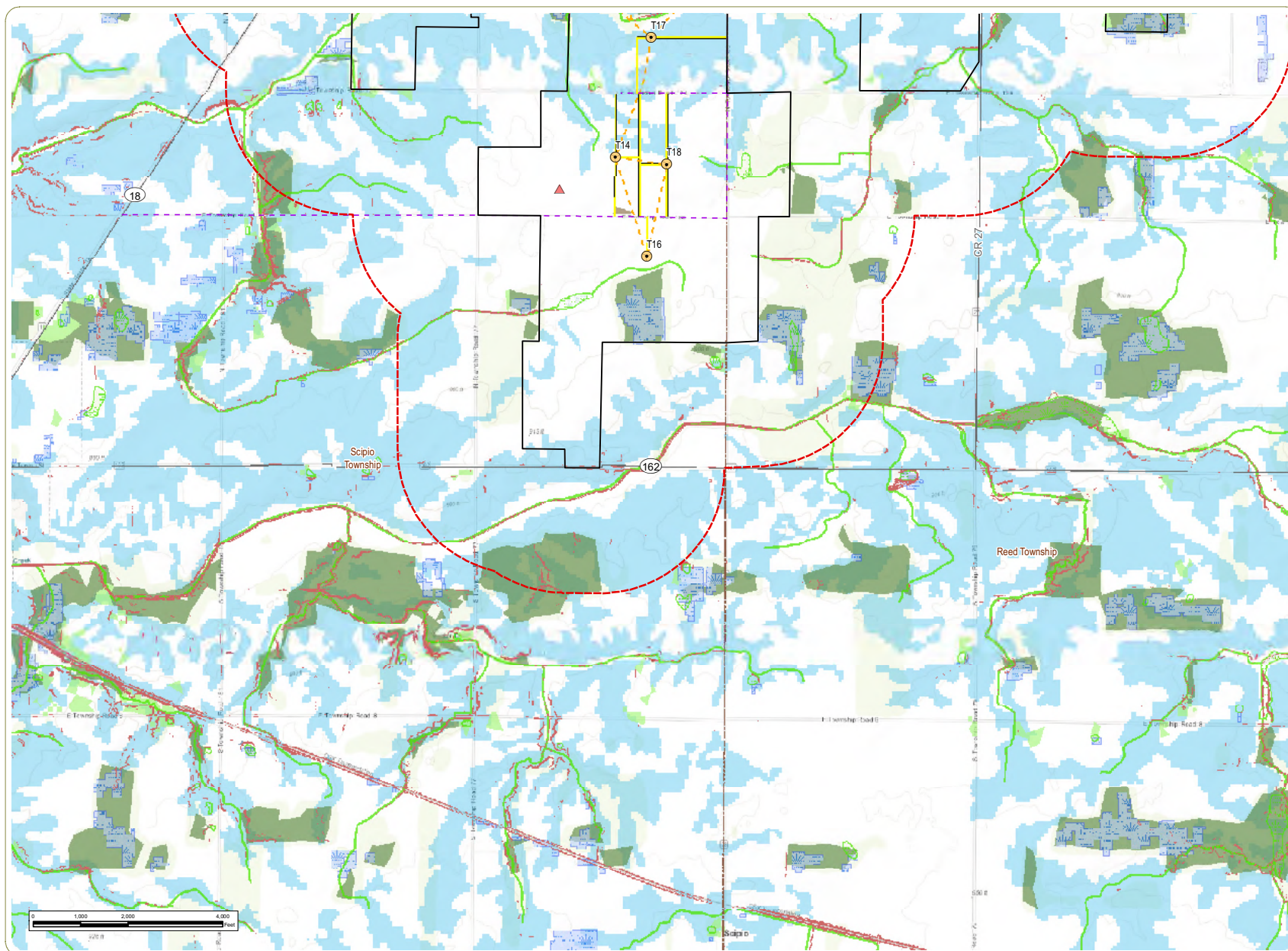
- Wind Turbine
- Access Road
- Collection Line
- Local Delivery Route
- Highly Erodible Land
- Potentially Highly Erodible Land
- Slope >12%
- ODNR Mapped Wetland
- NWI Mapped Wetland
- Project Boundary
- Half Mile Study Area
- Township Boundary
- County Boundary
- Undeveloped Land
- Bare Land
- Forest
- Grassland/Herbaceous
- Open Water



Sheet 7 of 8

Notes: 1. Basemap: ESRI ArcGIS Online "World Topographic Map" map service. 2. This map was generated in ArcMap on December 13, 2018. 3. This is a color graphic. Reproduction in grayscale may misrepresent the data. 4. Project components provided by Apex; wetland data obtained from ODNR and NWI Wetland Mapper; highly erodible land obtained from ODNR. 5. Map Scale 1: 24,000.



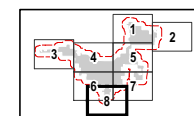


Republic Wind Farm

Adams, Pleasant, Reed, Scipio, and Thompson Townships, Seneca County, and York Township, Sandusky County, Ohio

Figure 08-3: Ecological Features

- Wind Turbine
- Met Tower
- Access Road
- Collection Line
- Local Delivery Route
- Highly Erodible Land
- Potentially Highly Erodible Land
- Slope >12%
- ODNR Mapped Wetland
- NWI Mapped Wetland
- Project Boundary
- Half Mile Study Area
- Township Boundary
- County Boundary
- Undeveloped Land
- Baren Land
- Forest
- Grassland/Herbaceous
- Open Water



Sheet 8 of 8

Notes: 1. Basemap: ESRI ArcGIS Online "World Topographic Map" map service. 2. This map was generated in ArcMap on December 13, 2018. 3. This is a color graphic. Reproduction in grayscale may misrepresent the data. 4. Project components provided by Apex; wetland data obtained from ODNR and NWI Wetland Mapper; highly erodible land obtained from ODNR. 5. Map Scale 1: 24,000.



www.edrdpc.com

This foregoing document was electronically filed with the Public Utilities

Commission of Ohio Docketing Information System on

12/26/2018 11:46:56 AM

in

Case No(s). 12-2295-EL-REN

Summary: Application Figures 08-1 through Figures 08-3 electronically filed by Teresa Orahod on behalf of Dylan F. Borchers