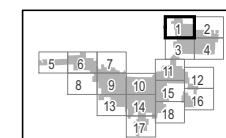


Republic Wind Farm

Adams, Pleasant, Reed, Scipio, and Thompson Townships, Seneca County, and York Township, Sandusky County, Ohio

Figure 03-2: Aerial Photograph

- Wind Turbine
- Access Road
- Collection Line
- Local Delivery Route
- Laydown Yard
- Project Boundary
- Parcel Boundary
- Township Boundary
- County Boundary

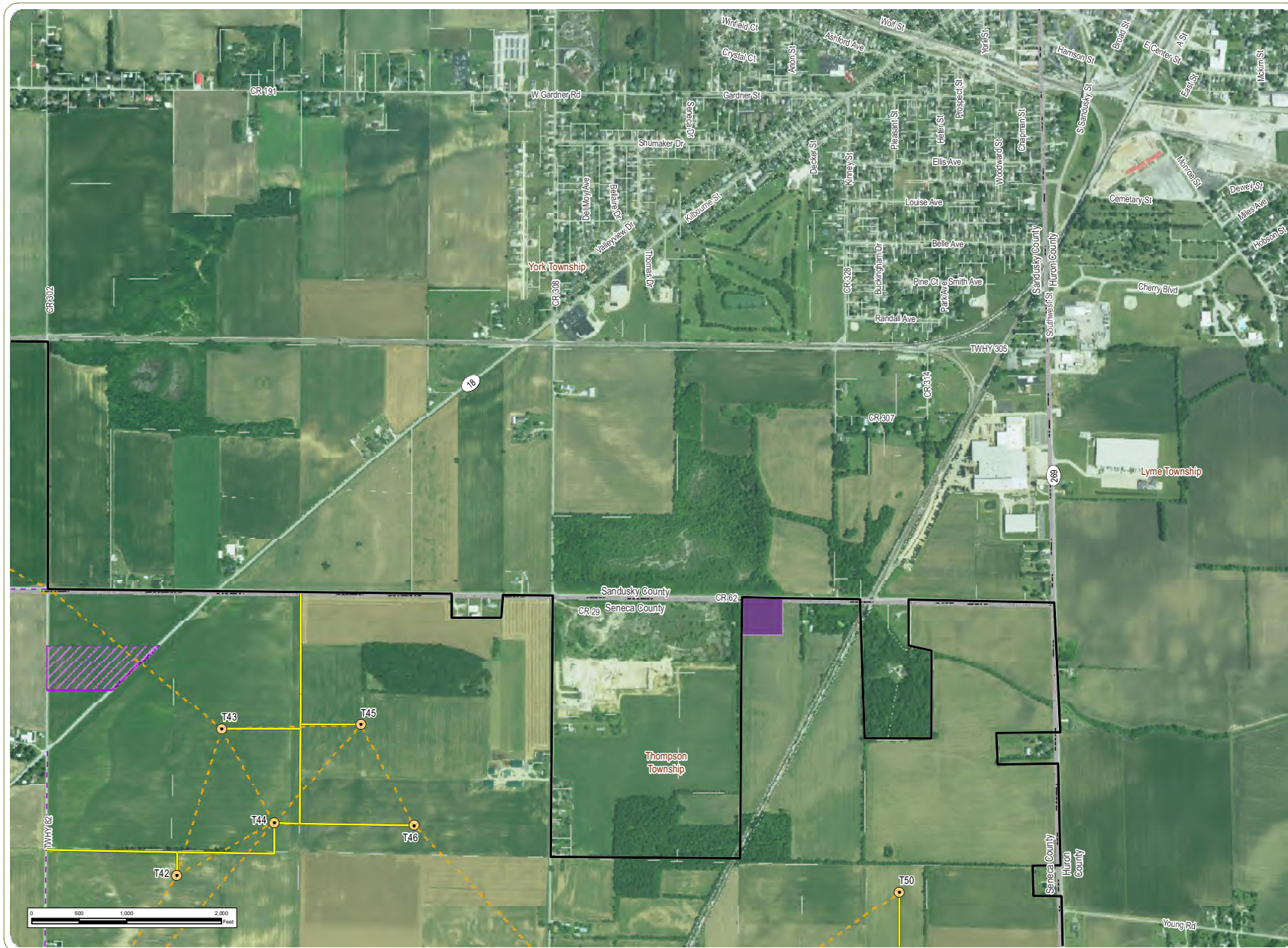


Sheet 1 of 18

Notes: 1. Basemap: USDA NAIP "2017" orthoimagery map service. 2. This map was generated in ArcMap on December 13, 2018. 3. This is a color graphic. Reproduction in grayscale may misrepresent the data. 4. Facility components and parcel boundaries provided by Apex; additional data obtained from publicly available sources. 5. Map Scale 1:12,000.



www.edrdpc.com

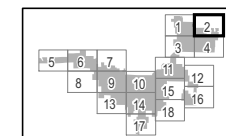


Republic Wind Farm

Adams, Pleasant, Reed, Scipio, and Thompson Townships, Seneca County, and York Township, Sandusky County, Ohio

Figure 03-2: Aerial Photograph

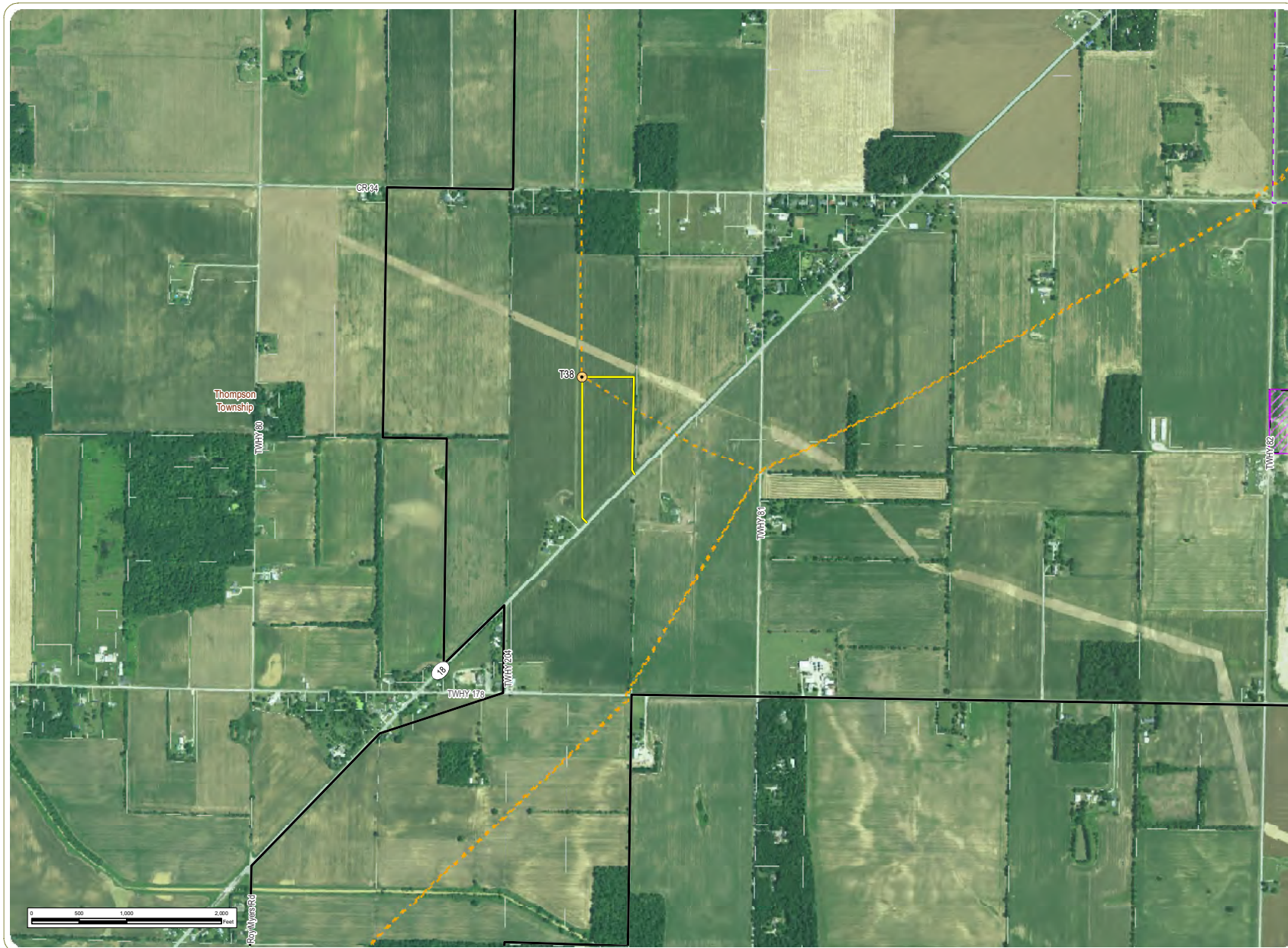
- Wind Turbine
- Access Road
- Collection Line
- Local Delivery Route
- O&M Facility
- Laydown Yard
- Project Boundary
- Parcel Boundary
- Township Boundary
- County Boundary



Sheet 2 of 18

Notes: 1. Basemap: USDA NAIP "2017" orthoimagery map service. 2. This map was generated in ArcMap on December 13, 2018. 3. This is a color graphic. Reproduction in grayscale may misrepresent the data. 4. Facility components and parcel boundaries provided by Apex; additional data obtained from publicly available sources. 5. Map Scale 1:12,000.



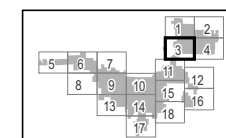


Republic Wind Farm

Adams, Pleasant, Reed, Scipio, and Thompson Townships, Seneca County, and York Township, Sandusky County, Ohio

Figure 03-2: Aerial Photograph

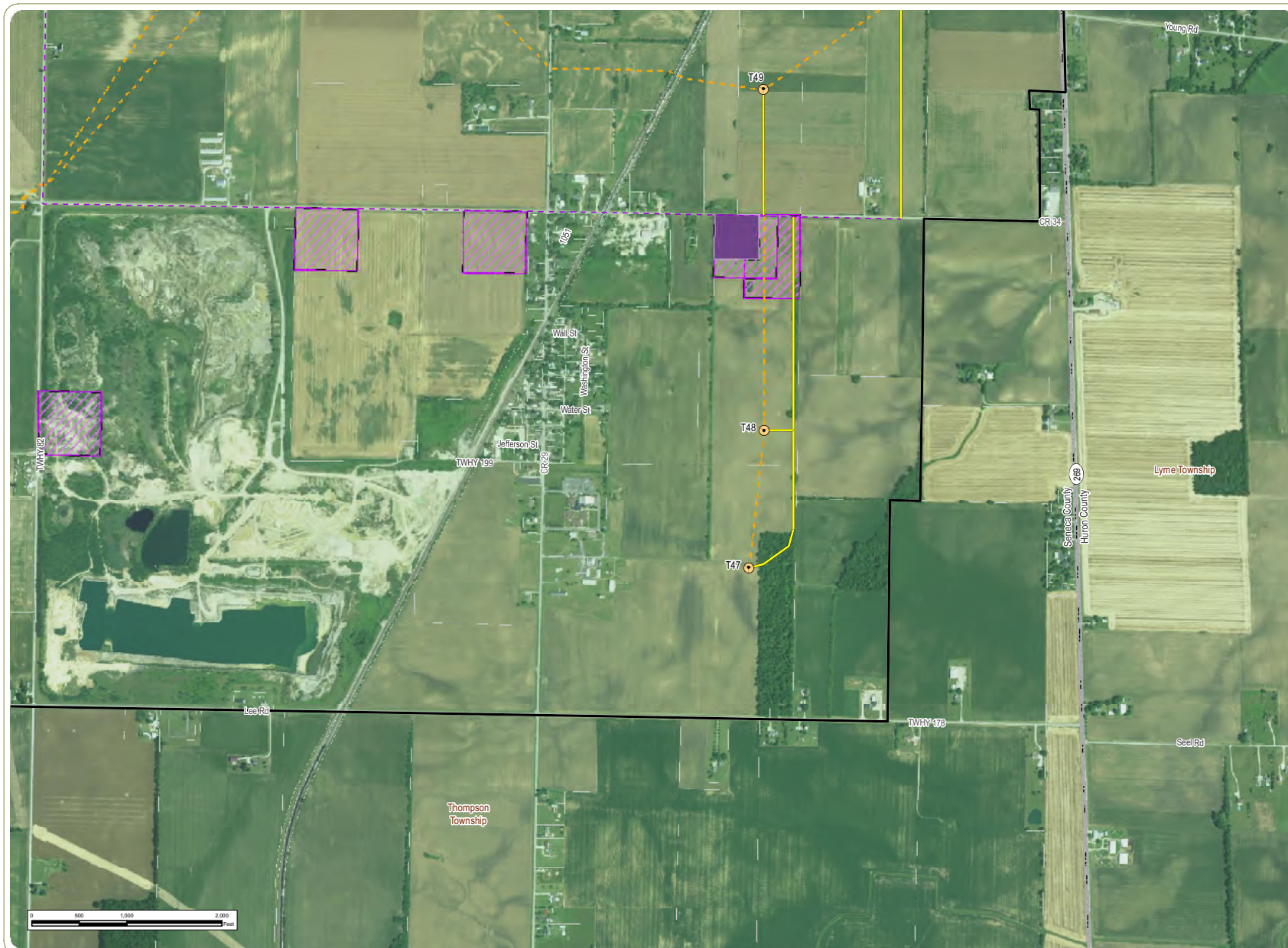
- Wind Turbine
- Access Road
- Collection Line
- Local Delivery Route
- Laydown Yard
- Project Boundary
- Township Boundary
- County Boundary



Sheet 3 of 18

Notes: 1. Basemap: USDA NAIP "2017" orthorectified map service. 2. This map was generated in ArcMap on December 13, 2018. 3. This is a color graphic. Reproduction in grayscale may misrepresent the data. 4. Facility components and parcel boundaries provided by Apex; additional data obtained from publicly available sources. 5. Map Scale 1:12,000.





www.edrdpc.com

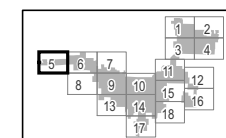


Republic Wind Farm

Adams, Pleasant, Reed, Scipio, and Thompson Townships, Seneca County, and York Township, Sandusky County, Ohio

Figure 03-2: Aerial Photograph

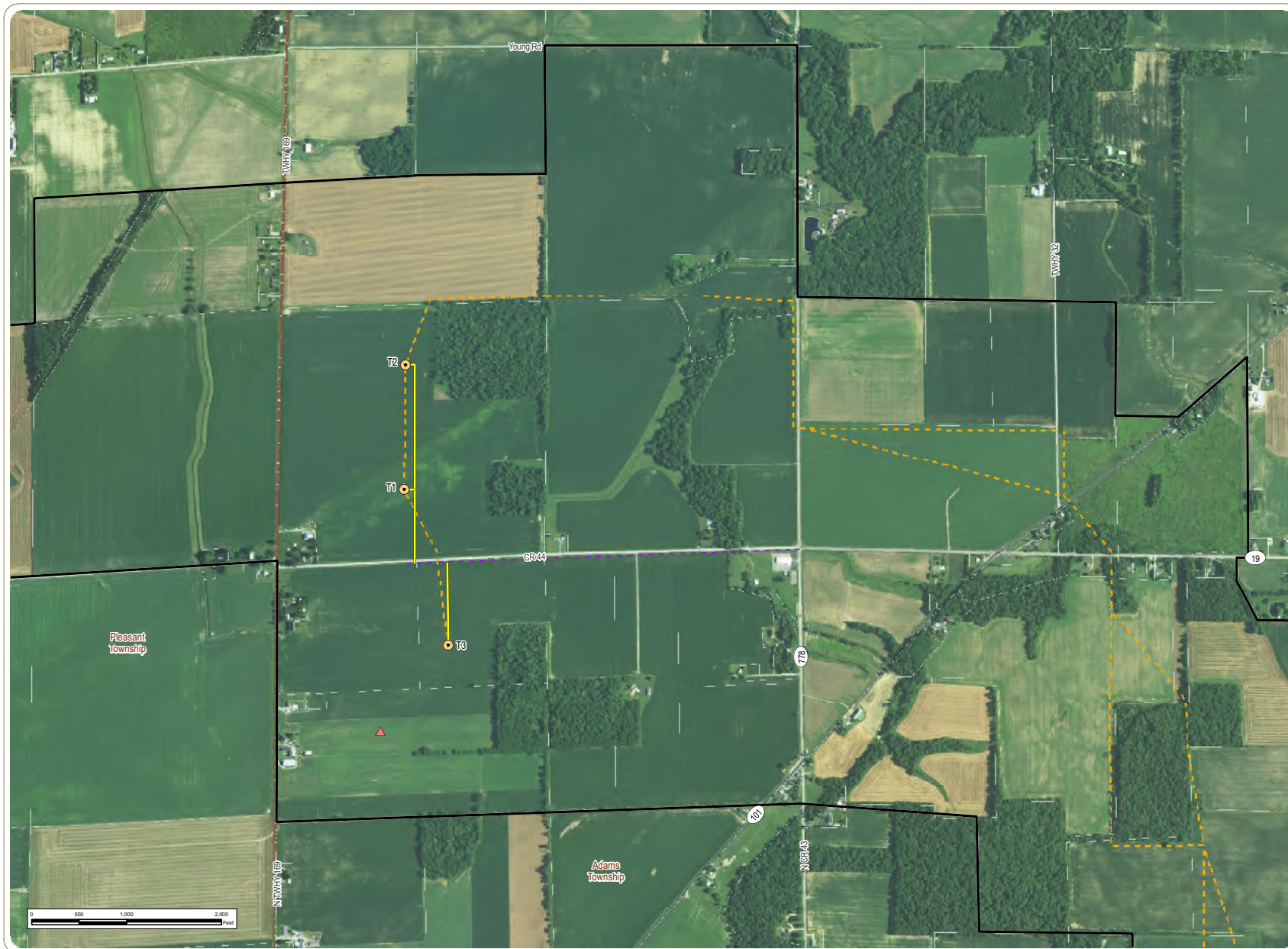
- Project Boundary
- Township Boundary
- County Boundary



Sheet 5 of 18

Notes: 1. Basemap: USDA NAIP "2017" orthoimagery map service. 2. This map was generated in ArcMap on December 13, 2018. 3. This is a color graphic. Reproduction in grayscale may misrepresent the data. 4. Facility components and parcel boundaries provided by Apex; additional data obtained from publicly available sources. 5. Map Scale 1:12,000.



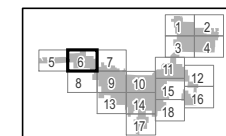


Republic Wind Farm

Adams, Pleasant, Reed, Scipio, and Thompson Townships, Seneca County, and York Township, Sandusky County, Ohio

Figure 03-2: Aerial Photograph

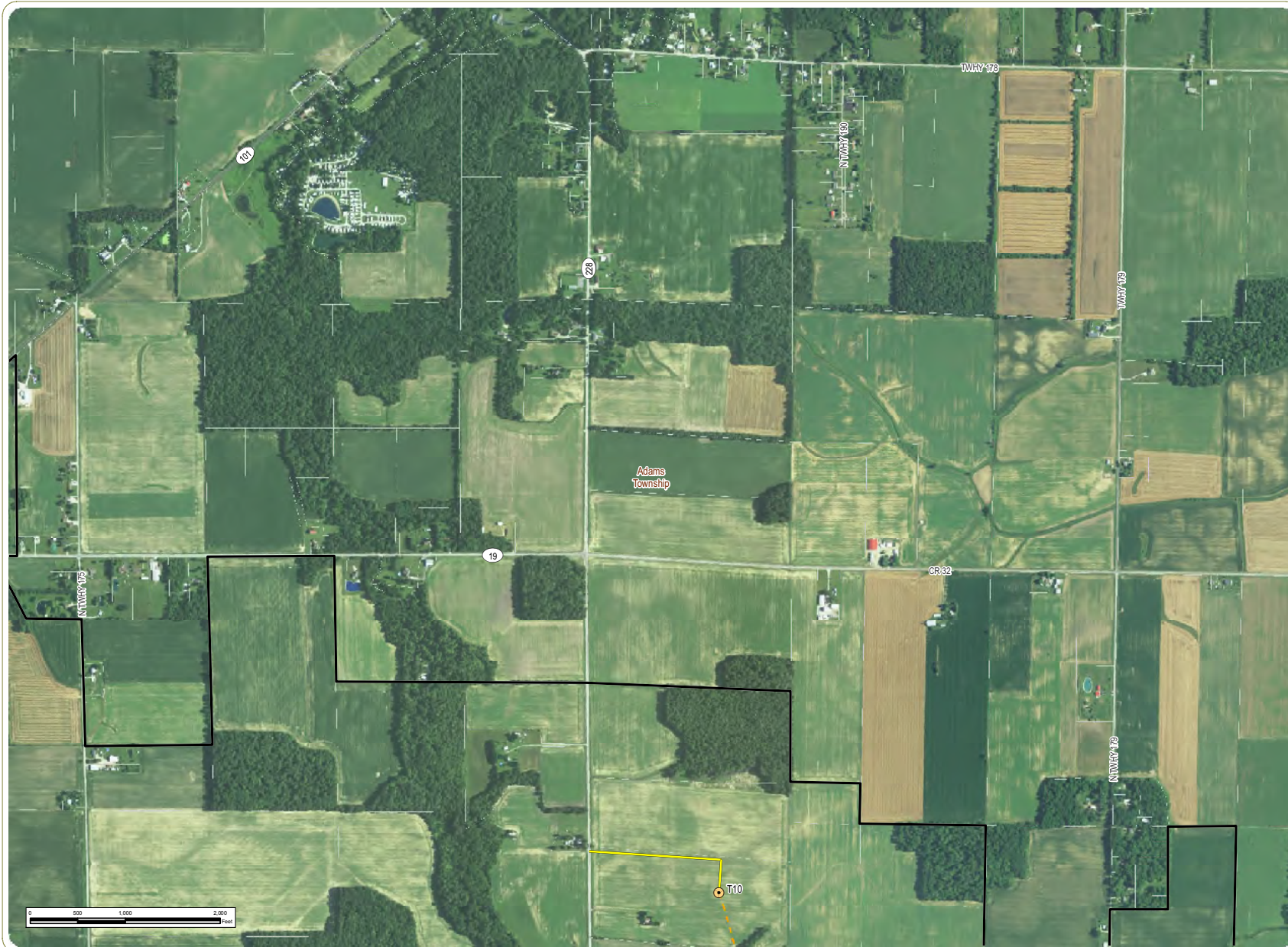
- Wind Turbine
- Met Tower
- Access Road
- Collection Line
- Local Delivery Route
- Project Boundary
- Township Boundary
- County Boundary



Sheet 6 of 18

Notes: 1. Basemap: USDA NAIP "2017" orthoimagery map service. 2. This map was generated in ArcMap on December 13, 2018. 3. This is a color graphic. Reproduction in grayscale may misrepresent the data. 4. Facility components and parcel boundaries provided by Apex; additional data obtained from publicly available sources. 5. Map Scale 1:12,000.



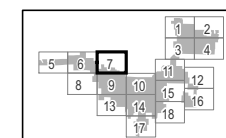


Republic Wind Farm

Adams, Pleasant, Reed, Scipio, and Thompson Townships, Seneca County, and York Township, Sandusky County, Ohio

Figure 03-2: Aerial Photograph

- Wind Turbine
- Access Road
- Collection Line
- Project Boundary
- Township Boundary
- County Boundary



Sheet 7 of 18

Notes: 1. Basemap: USDA NAIP "2017" orthorectified map service. 2. This map was generated in ArcMap on December 13, 2018. 3. This is a color graphic. Reproduction in grayscale may misrepresent the data. 4. Facility components and parcel boundaries provided by Apex; additional data obtained from publicly available sources. 5. Map Scale 1:12,000.



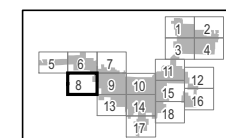


Republic Wind Farm

Adams, Pleasant, Reed, Scipio, and Thompson Townships, Seneca County, and York Township, Sandusky County, Ohio

Figure 03-2: Aerial Photograph

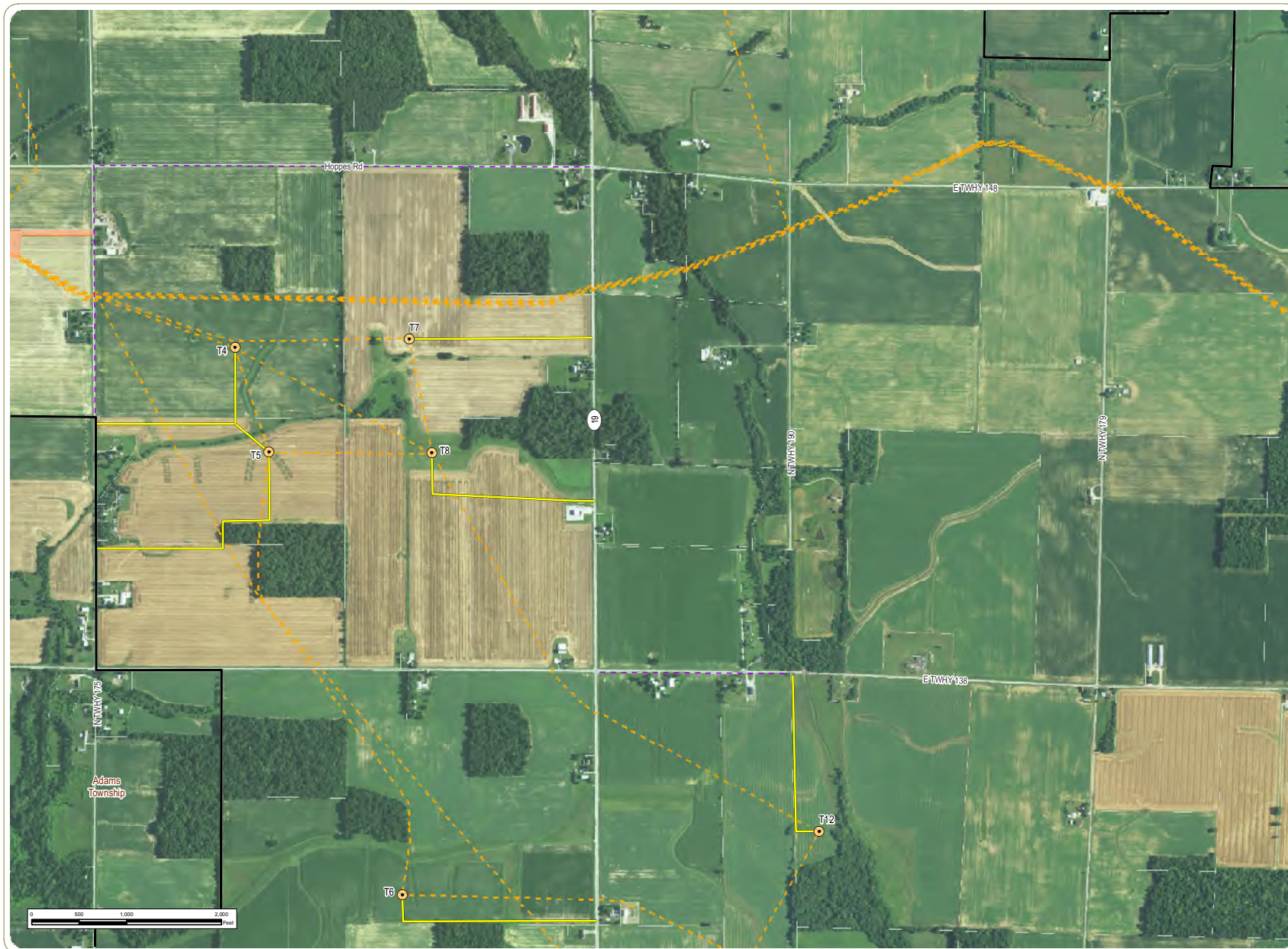
- Collection Line
- Collection Substation
- Project Boundary
- Township Boundary
- County Boundary



Sheet 8 of 18

Notes: 1. Basemap: USDA NAIP "2017" orthoimagery map service. 2. This map was generated in ArcMap on December 13, 2018. 3. This is a color graphic. Reproduction in grayscale may misrepresent the data. 4. Facility components and parcel boundaries provided by Apex; additional data obtained from publicly available sources. 5. Map Scale 1:12,000.



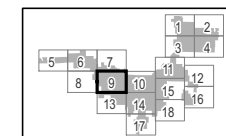


Republic Wind Farm

Adams, Pleasant, Reed, Scipio, and Thompson Townships, Seneca County, and York Township, Sandusky County, Ohio

Figure 03-2: Aerial Photograph

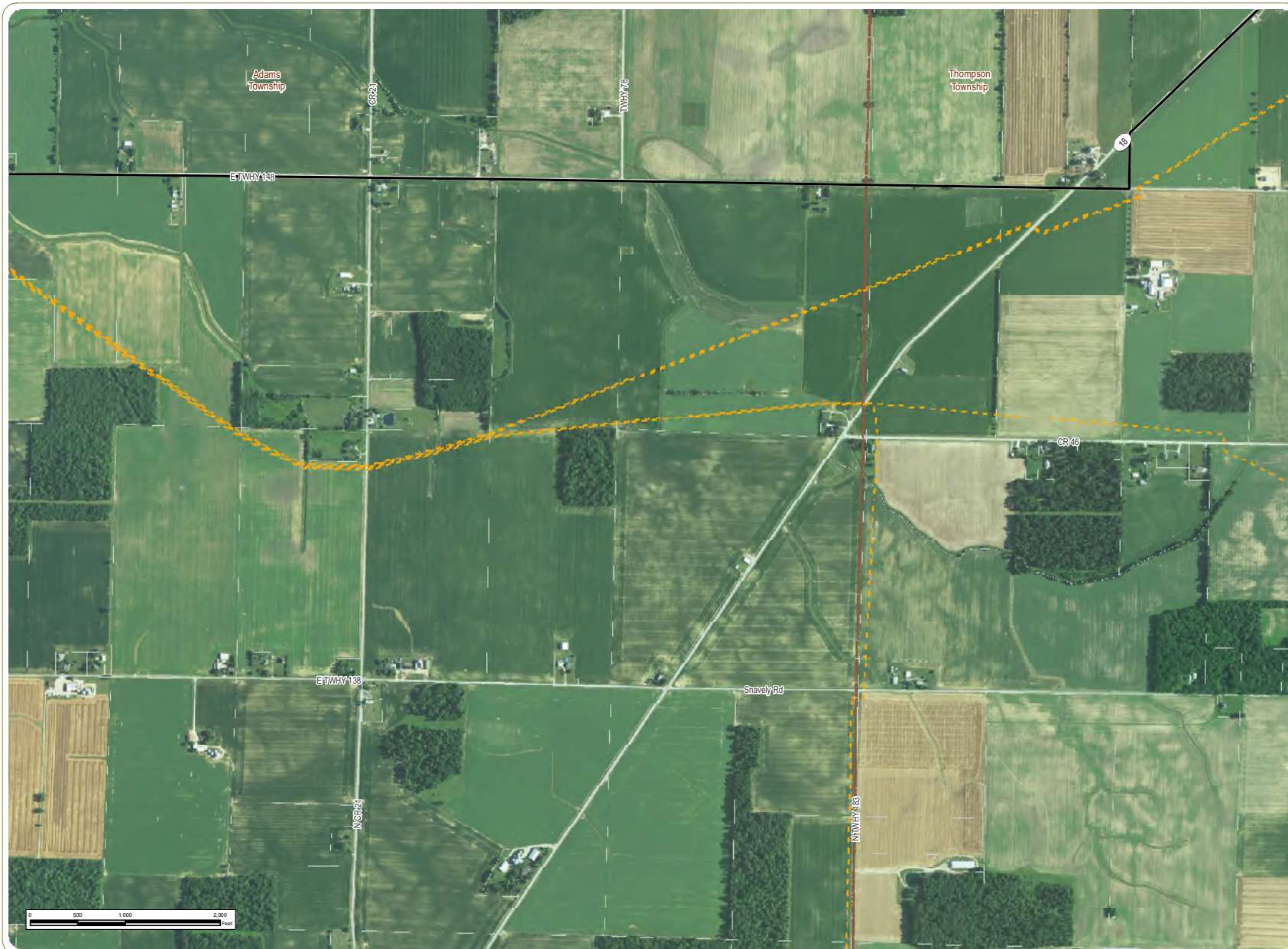
- Wind Turbine
- Access Road
- Collection Line
- Local Delivery Route
- Collection Substation
- Project Boundary
- Township Boundary
- County Boundary



Sheet 9 of 18

Notes: 1. Basemap: USDA NAIP "2017" orthoimagery map service. 2. This map was generated in ArcMap on December 13, 2018. 3. This is a color graphic. Reproduction in grayscale may misrepresent the data. 4. Facility components and parcel boundaries provided by Apex; additional data obtained from publicly available sources. 5. Map Scale 1:12,000.



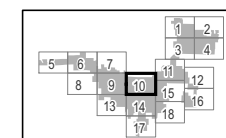


Republic Wind Farm

Adams, Pleasant, Reed, Scipio, and Thompson Townships, Seneca County, and York Township, Sandusky County, Ohio

Figure 03-2: Aerial Photograph

- Collection Line
- ▬ Project Boundary
- ▬ Township Boundary
- ▬ County Boundary

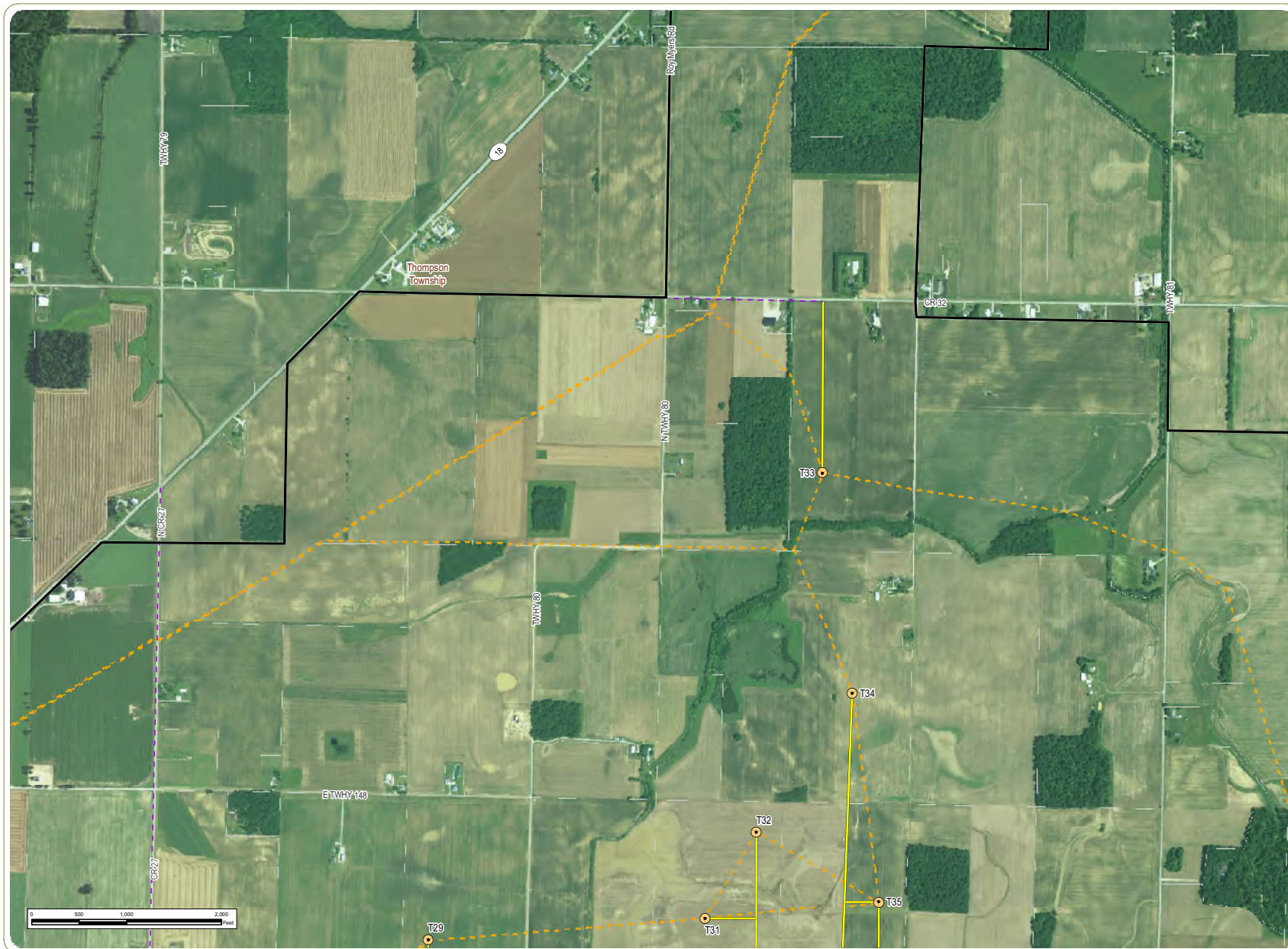


Sheet 10 of 18

Notes: 1. Basemap: USDA NAIP "2017" orthoimagery map service. 2. This map was generated in ArcMap on December 13, 2018. 3. This is a color graphic. Reproduction in grayscale may misrepresent the data. 4. Facility components and parcel boundaries provided by Apex; additional data obtained from publicly available sources. 5. Map Scale 1:12,000.



www.edrdpc.com

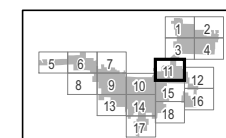


Republic Wind Farm

Adams, Pleasant, Reed, Scipio, and Thompson Townships, Seneca County, and York Township, Sandusky County, Ohio

Figure 03-2: Aerial Photograph

- Wind Turbine
- Access Road
- Collection Line
- Local Delivery Route
- Project Boundary
- Township Boundary
- County Boundary



Sheet 11 of 18

Notes: 1. Basemap: USDA NAIP "2017" orthoimagery map service. 2. This map was generated in ArcMap on December 13, 2018. 3. This is a color graphic. Reproduction in grayscale may misrepresent the data. 4. Facility components and parcel boundaries provided by Apex; additional data obtained from publicly available sources. 5. Map Scale 1:12,000.



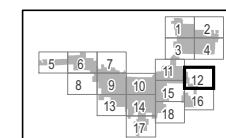


Republic Wind Farm

Adams, Pleasant, Reed, Scipio, and Thompson Townships, Seneca County, and York Township, Sandusky County, Ohio

Figure 03-2: Aerial Photograph

- Collection Line
- ▬ Project Boundary
- - - Township Boundary
- - - County Boundary



Sheet 12 of 18

Notes: 1. Basemap: USDA NAIP "2017" orthoimagery map service. 2. This map was generated in ArcMap on December 13, 2018. 3. This is a color graphic. Reproduction in grayscale may misrepresent the data. 4. Facility components and parcel boundaries provided by Apex; additional data obtained from publicly available sources. 5. Map Scale 1:12,000.



www.edrdpc.com

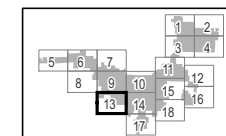


Republic Wind Farm

Adams, Pleasant, Reed, Scipio, and Thompson Townships, Seneca County, and York Township, Sandusky County, Ohio

Figure 03-2: Aerial Photograph

- Wind Turbine
- Met Tower
- Access Road
- Collection Line
- Local Delivery Route
- Project Boundary
- Township Boundary
- County Boundary



Sheet 13 of 18

Notes: 1. Basemap: USDA NAIP "2017" orthoimagery map service. 2. This map was generated in ArcMap on December 13, 2018. 3. This is a color graphic. Reproduction in grayscale may misrepresent the data. 4. Facility components and parcel boundaries provided by Apex; additional data obtained from publicly available sources. 5. Map Scale 1:12,000.



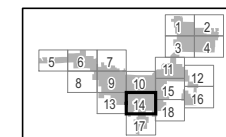


Republic Wind Farm

Adams, Pleasant, Reed, Scipio, and Thompson Townships, Seneca County, and York Township, Sandusky County, Ohio

Figure 03-2: Aerial Photograph

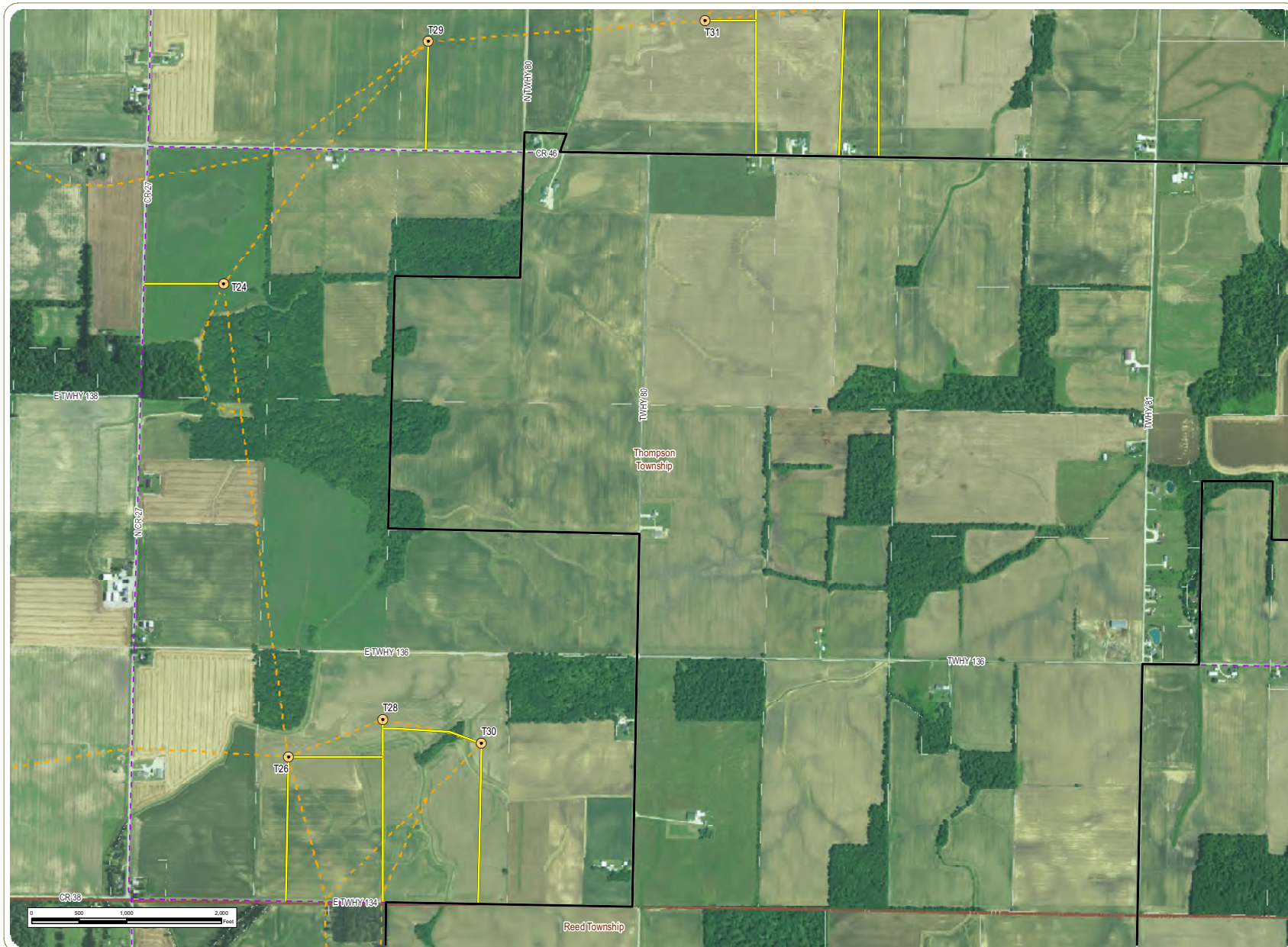
- Wind Turbine
- Access Road
- Collection Line
- Local Delivery Route
- Project Boundary
- Township Boundary
- County Boundary



Sheet 14 of 18

Notes: 1. Basemap: USDA NAIP "2017" orthoimagery map service. 2. This map was generated in ArcMap on December 13, 2018. 3. This is a color graphic. Reproduction in grayscale may misrepresent the data. 4. Facility components and parcel boundaries provided by Apex; additional data obtained from publicly available sources. 5. Map Scale 1:12,000.



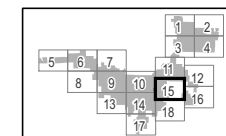


Republic Wind Farm

Adams, Pleasant, Reed, Scipio, and Thompson Townships, Seneca County, and York Township, Sandusky County, Ohio

Figure 03-2: Aerial Photograph

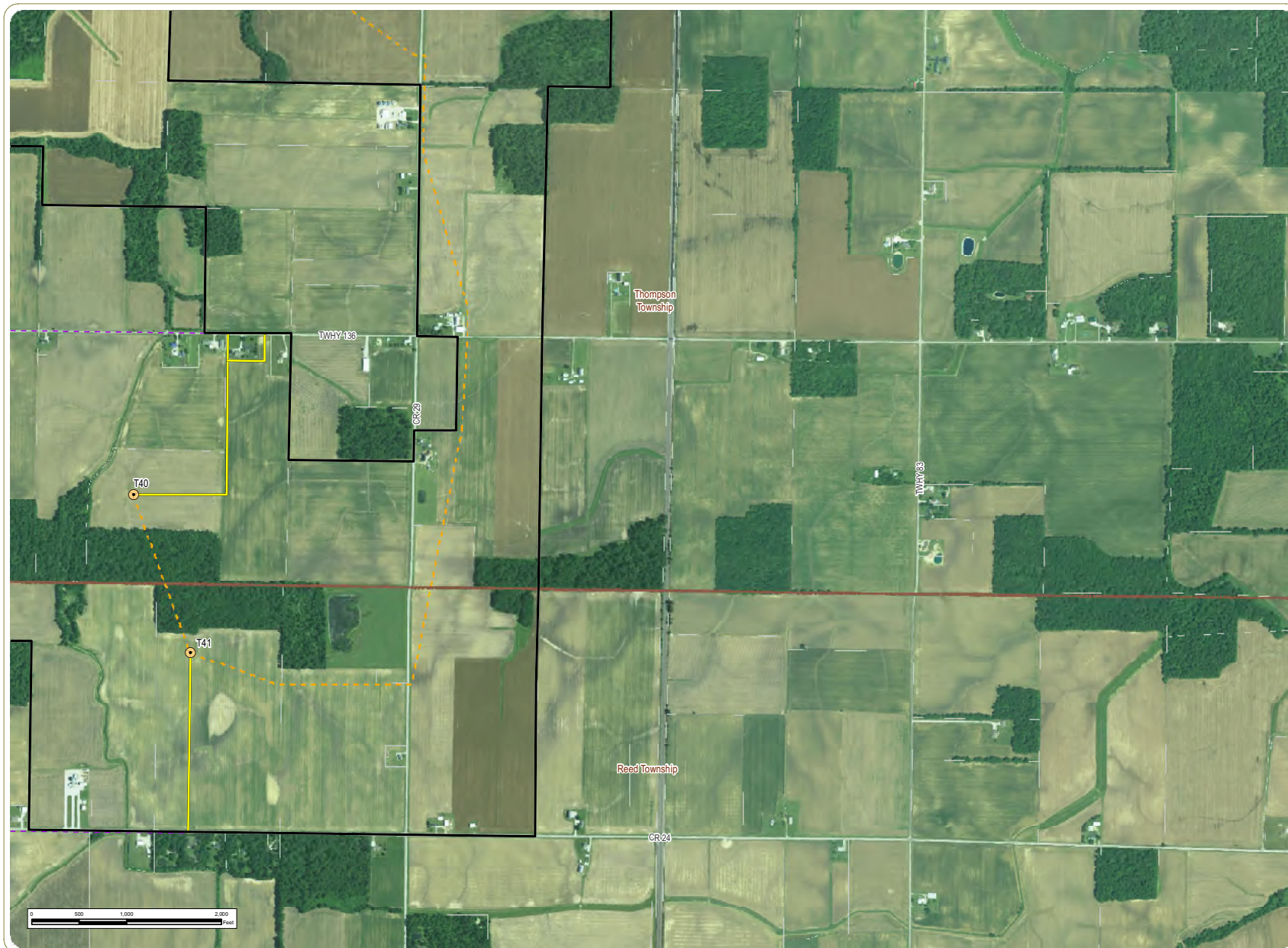
- Wind Turbine
- Access Road
- Collection Line
- Local Delivery Route
- Project Boundary
- Township Boundary
- County Boundary



Sheet 15 of 18

Notes: 1. Basemap: USDA NAIP "2017" orthoimagery map service. 2. This map was generated in ArcMap on December 13, 2018. 3. This is a color graphic. Reproduction in grayscale may misrepresent the data. 4. Facility components and parcel boundaries provided by Apex; additional data obtained from publicly available sources. 5. Map Scale 1:12,000.



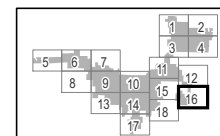


Republic Wind Farm

Adams, Pleasant, Reed, Scipio, and Thompson Townships, Seneca County, and York Township, Sandusky County, Ohio

Figure 03-2: Aerial Photograph

- Wind Turbine
- Access Road
- Collection Line
- Local Delivery Route
- Project Boundary
- Township Boundary
- County Boundary



Sheet 16 of 18

Notes: 1. Basemap: USDA NAIP "2017" orthoimagery map service. 2. This map was generated in ArcMap on December 13, 2018. 3. This is a color graphic. Reproduction in grayscale may misrepresent the data. 4. Facility components and parcel boundaries provided by Apex; additional data obtained from publicly available sources. 5. Map Scale 1:12,000.



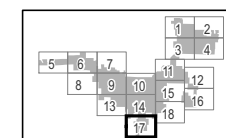


Republic Wind Farm

Adams, Pleasant, Reed, Scipio, and Thompson Townships, Seneca County, and York Township, Sandusky County, Ohio

Figure 03-2: Aerial Photograph

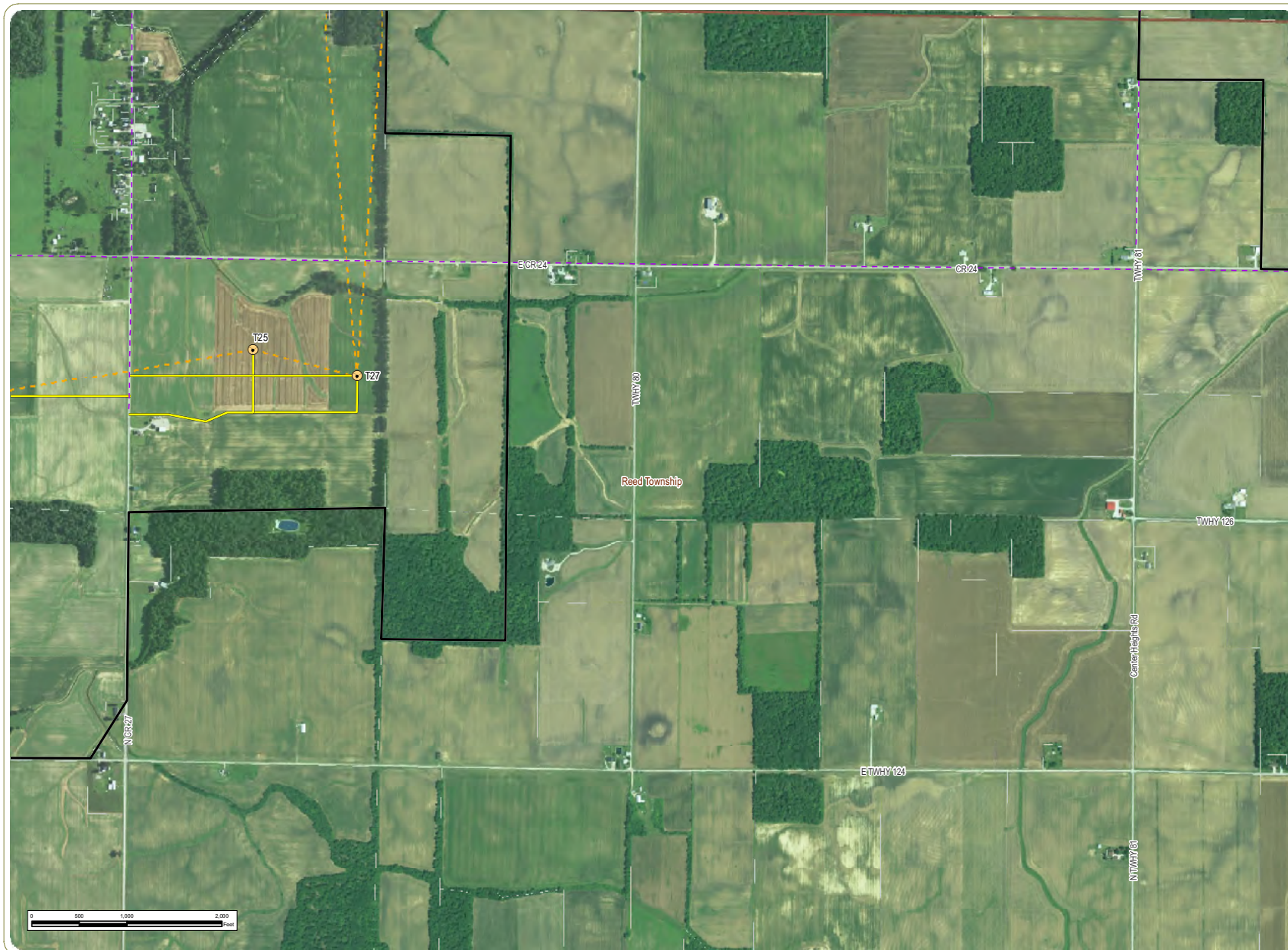
- Wind Turbine
- Met Tower
- Access Road
- Collection Line
- Local Delivery Route
- Project Boundary
- Township Boundary
- County Boundary

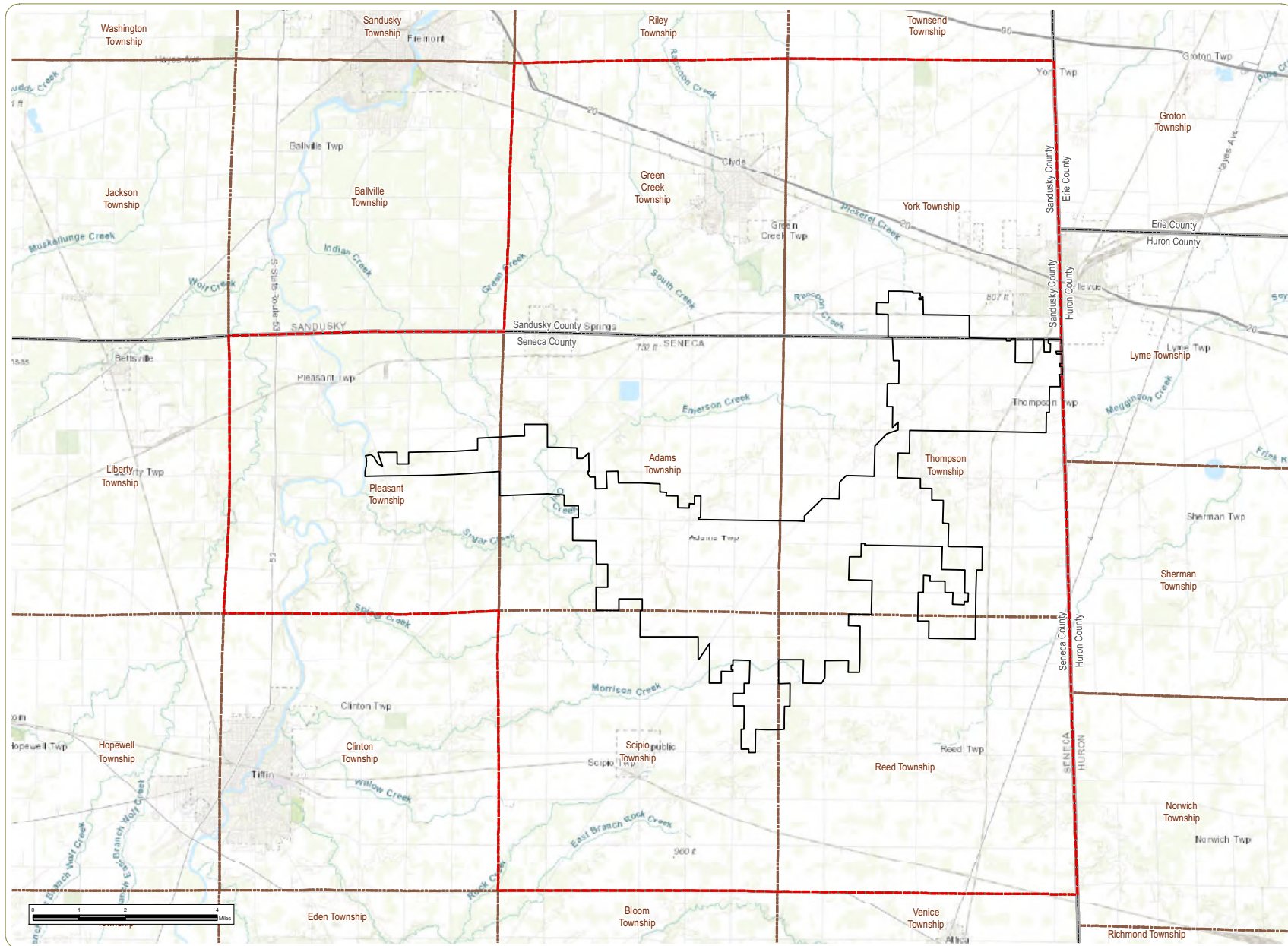


Sheet 17 of 18

Notes: 1. Basemap: USDA NAIP "2017" orthoimagery map service. 2. This map was generated in ArcMap on December 13, 2018. 3. This is a color graphic. Reproduction in grayscale may misrepresent the data. 4. Facility components and parcel boundaries provided by Apex; additional data obtained from publicly available sources. 5. Map Scale 1:12,000.







Republic Wind Farm

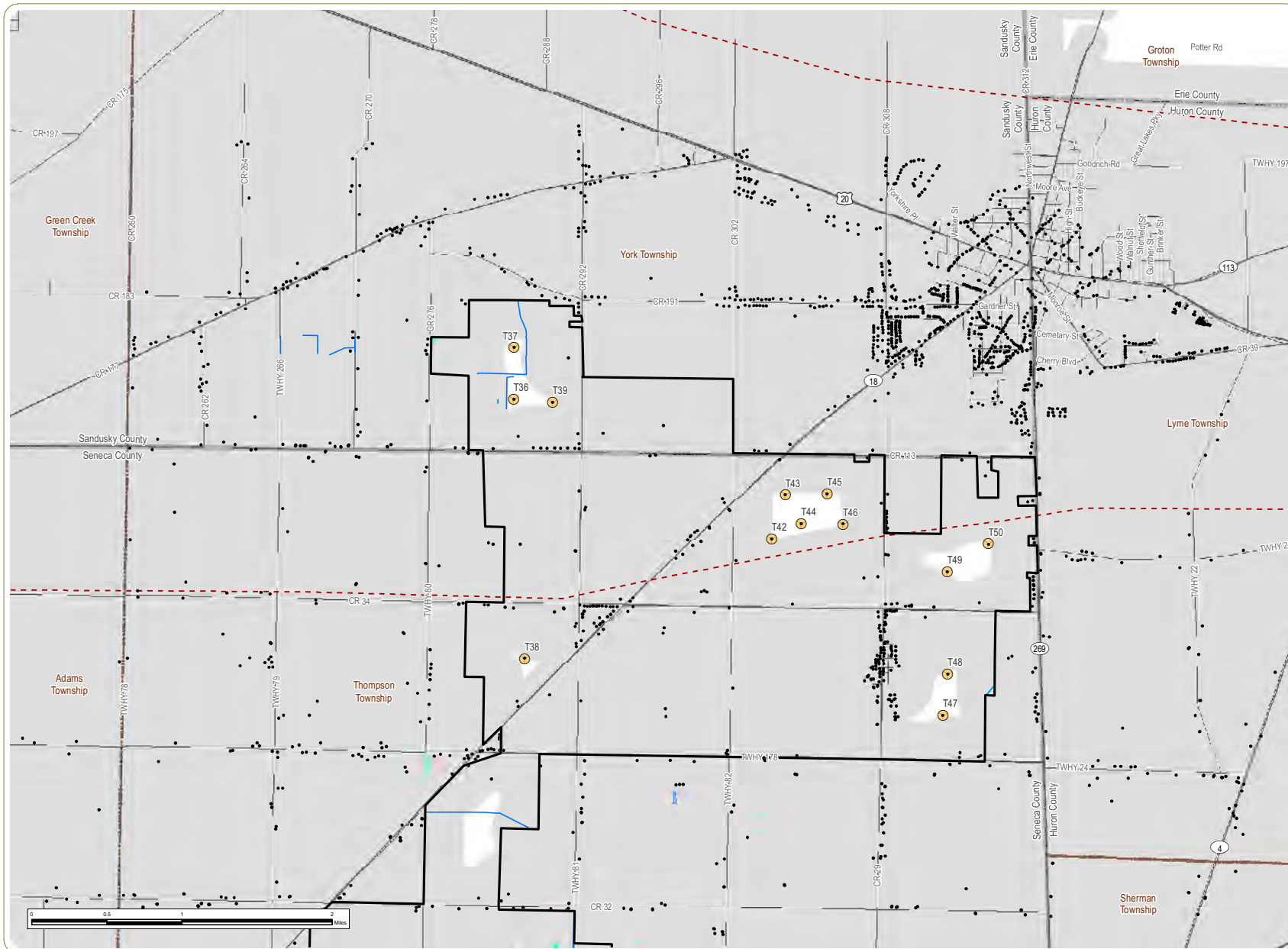
Adams, Pleasant, Reed, Scipio, and Thompson Townships, Seneca County, and York Township, Sandusky County, Ohio

Figure 04-1: Study Area Evaluated

- Project Boundary
- Study Area Evaluated
- County Boundary
- Township Boundary

Notes: 1. Basemap: ESRI ArcGIS Online "World Topographic Map" map service. 2. This map was generated in ArcMap on December 13, 2018. 3. This is a color graphic. Reproduction in grayscale may misrepresent the data. 4. Project Boundary provided by Apex. 5. Map Scale 1: 130,000.



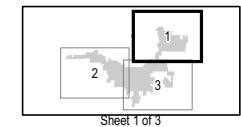


Republic Wind Farm

Adams, Pleasant, Reed, Scipio, and Thompson Townships, Seneca County, and York Township, Sandusky County, Ohio

Figure 04-2: Constraints Map

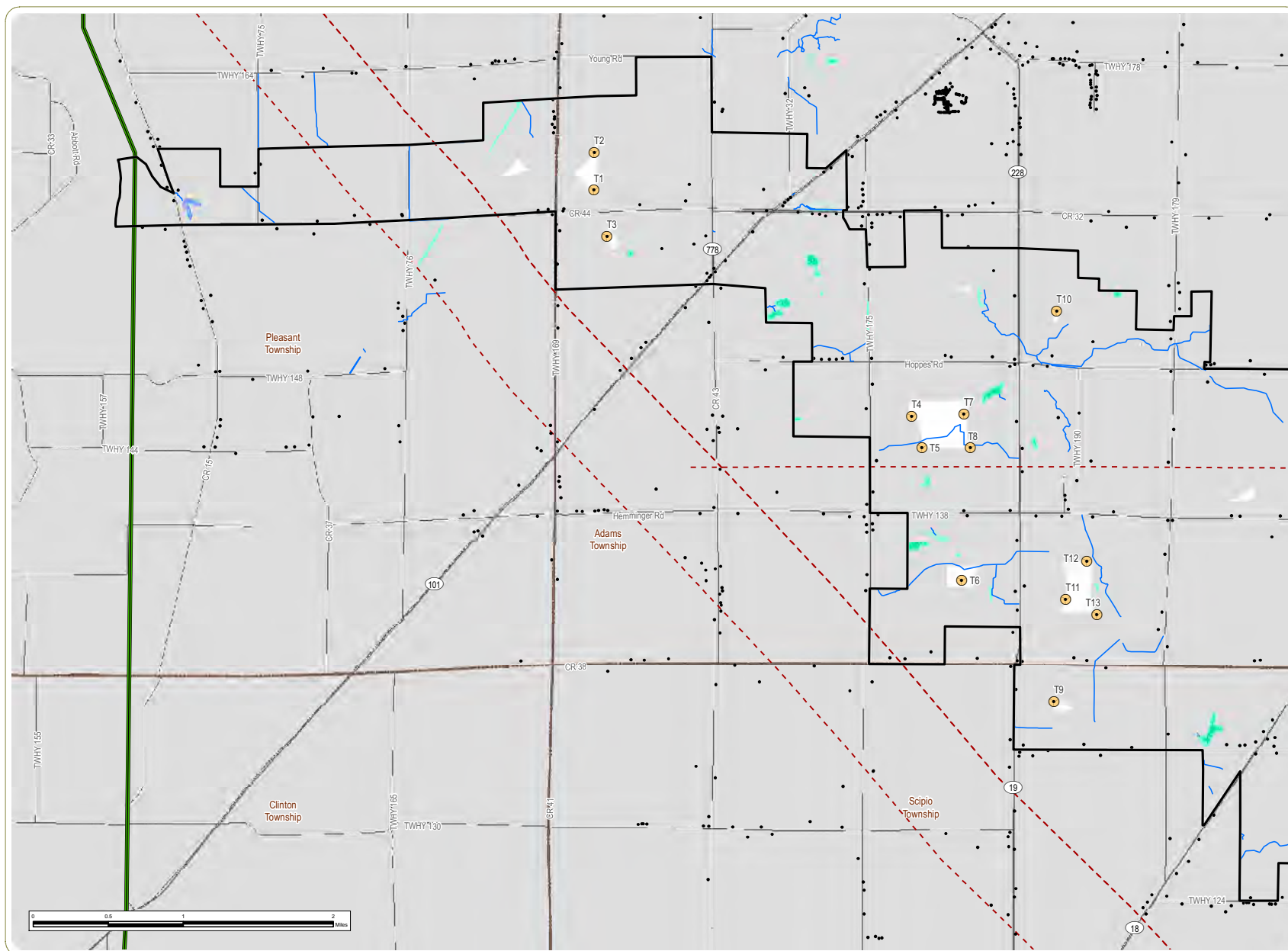
- Wind Turbine
- Structure
- Delineated Stream
- - - Major Pipeline
- Public Road
- Delineated Waterbody
- Delineated Wetland
- ▭ Project Boundary
- ▭ Setback Area
- ▭ Township Boundary
- ▭ County Boundary



Notes: 1. Basemap: ESRI StreetMap North America, 2008. 2. This map was generated in ArcMap on December 13, 2018. 3. This is a color graphic. Reproduction in grayscale may misrepresent the data. 4. Project components and pipeline data provided by Apex; delineated resources provided by Cardno. 5. Wind turbine setbacks are composed of 1371 feet from nonparticipating parcels, and 662.2 feet from existing pipelines, transmission lines, and public roads. 6. A survey will be conducted to inform the final Facility design, and this survey will verify the precise location of gas pipelines. The exact turbine locations may be subject to unsubstantial and minor engineering revisions (micro-siting) prior to construction. Any such micro-siting will comply with state laws and regulations (including all applicable setbacks), be compatible with landowner preferences, and be presented at the preconstruction meeting with OPSS with proof all necessary participation agreement. 7. Map Scale 1: 24,000.



www.edrdpc.com



Republic Wind Farm

Adams, Pleasant, Reed,
Scipio, and Thompson
Townships, Seneca County,
and York Township,
Sandusky County, Ohio

**Figure 04-2: Constraints
Map**

- Wind Turbine
- Structure
- Delineated Stream
- - - Major Pipeline
- Existing Transmission Line
- Public Road
- Delineated Waterbody
- Delineated Wetland
- ▭ Project Boundary
- ▭ Setback Area
- ▭ Township Boundary
- ▭ County Boundary

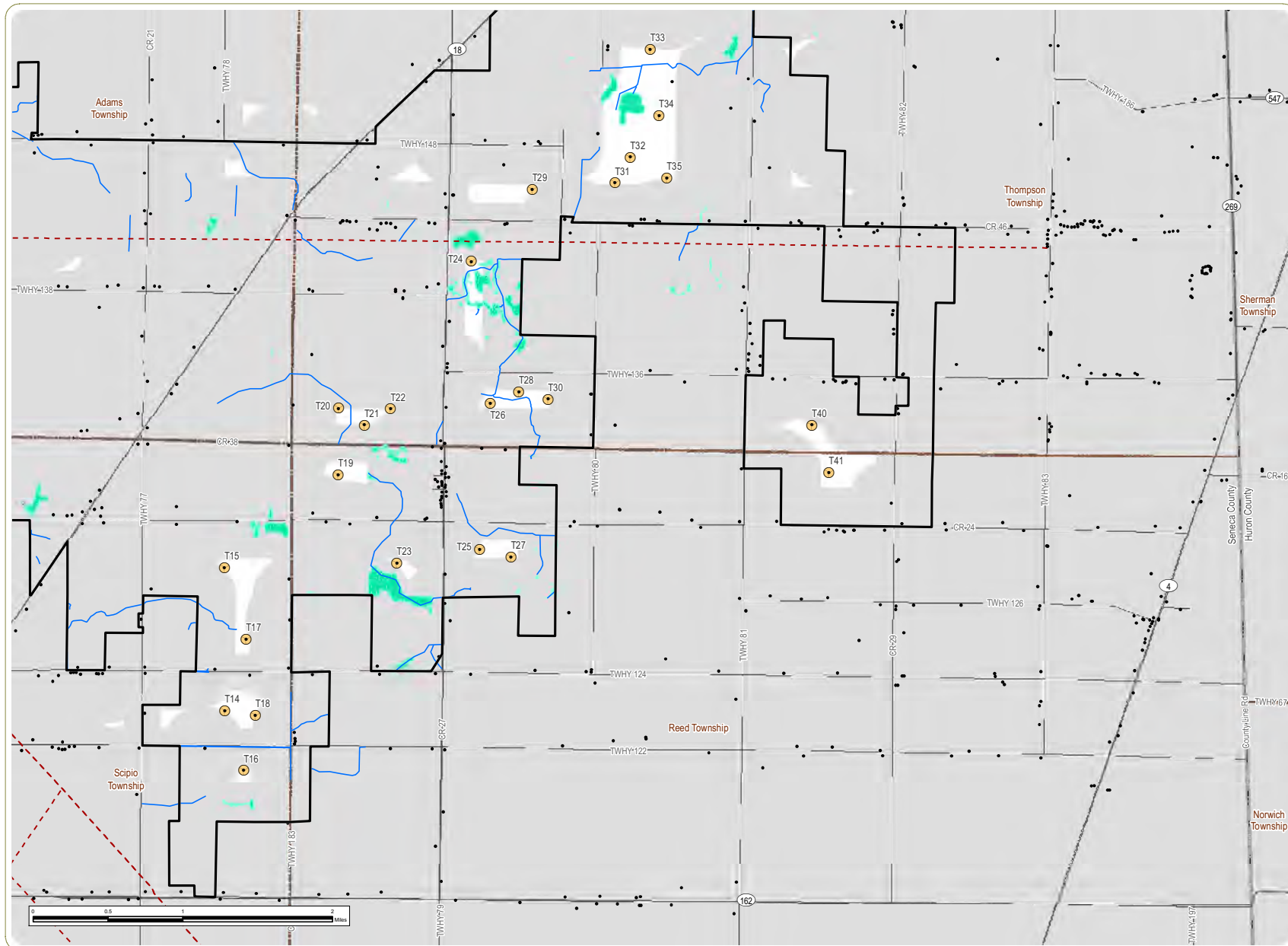


Sheet 2 of 3

Notes: 1. Basemap: ESRI StreetMap North America, 2008. 2. This map was generated in ArcMap on December 13, 2018. 3. This is a color graphic. Reproduction in grayscale may misrepresent the data. 4. Project components and pipeline data provided by Apex; delineated resources provided by Cardno. 5. Wind turbine setbacks are composed of 1371 feet from nonparticipating parcels, and 662.2 feet from existing pipelines, transmission lines, and public roads. 6. A survey will be conducted to inform the final Facility design, and this survey will verify the precise location of gas pipelines. The exact turbine locations may be subject to unsubstantial and minor engineering revisions (micro-siting) prior to construction. Any such micro-siting will comply with state laws and regulations (including all applicable setbacks), be compatible with landowner preferences, and be presented at the preconstruction meeting with OPSS with proof all necessary participation agreement. 7. Map Scale 1: 24,000.



www.edrdpc.com



Republic Wind Farm

Adams, Pleasant, Reed, Scipio, and Thompson Townships, Seneca County, and York Township, Sandusky County, Ohio

Figure 04-2: Constraints Map

- Wind Turbine
- Structure
- Delineated Stream
- - - Major Pipeline
- Public Road
- Delineated Waterbody
- Delineated Wetland
- Project Boundary
- Setback Area
- Township Boundary
- County Boundary



Notes: 1. Basemap: ESRI StreetMap North America, 2008. 2. This map was generated in ArcMap on December 13, 2018. 3. This is a color graphic. Reproduction in grayscale may misrepresent the data. 4. Project components and pipeline data provided by Apex; delineated resources provided by Cardno. 5. Wind turbine setbacks are composed of 1371 feet from nonparticipating parcels, and 662.2 feet from existing pipelines, transmission lines, and public roads. 6. A survey will be conducted to inform the final Facility design, and this survey will verify the precise location of gas pipelines. The exact turbine locations may be subject to unsubstantial and minor engineering revisions (micro-siting) prior to construction. Any such micro-siting will comply with state laws and regulations (including all applicable setbacks), be compatible with landowner preferences, and be presented at the preconstruction meeting with OPSS with proof of all necessary participation agreement. 7. Map Scale 1: 24,000.



This foregoing document was electronically filed with the Public Utilities

Commission of Ohio Docketing Information System on

12/26/2018 11:43:31 AM

in

Case No(s). 17-2295-EL-BGN

Summary: Application Figures03-2 and 04-1 electronically filed by Teresa Orahod on behalf of Dylan F. Borchers