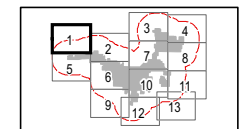


## Republic Wind Farm

Adams, Pleasant, Reed, Scipio, and Thompson Townships, Seneca County, and York Township, Sandusky County, Ohio

**Figure 03-1: Geography and Topography**

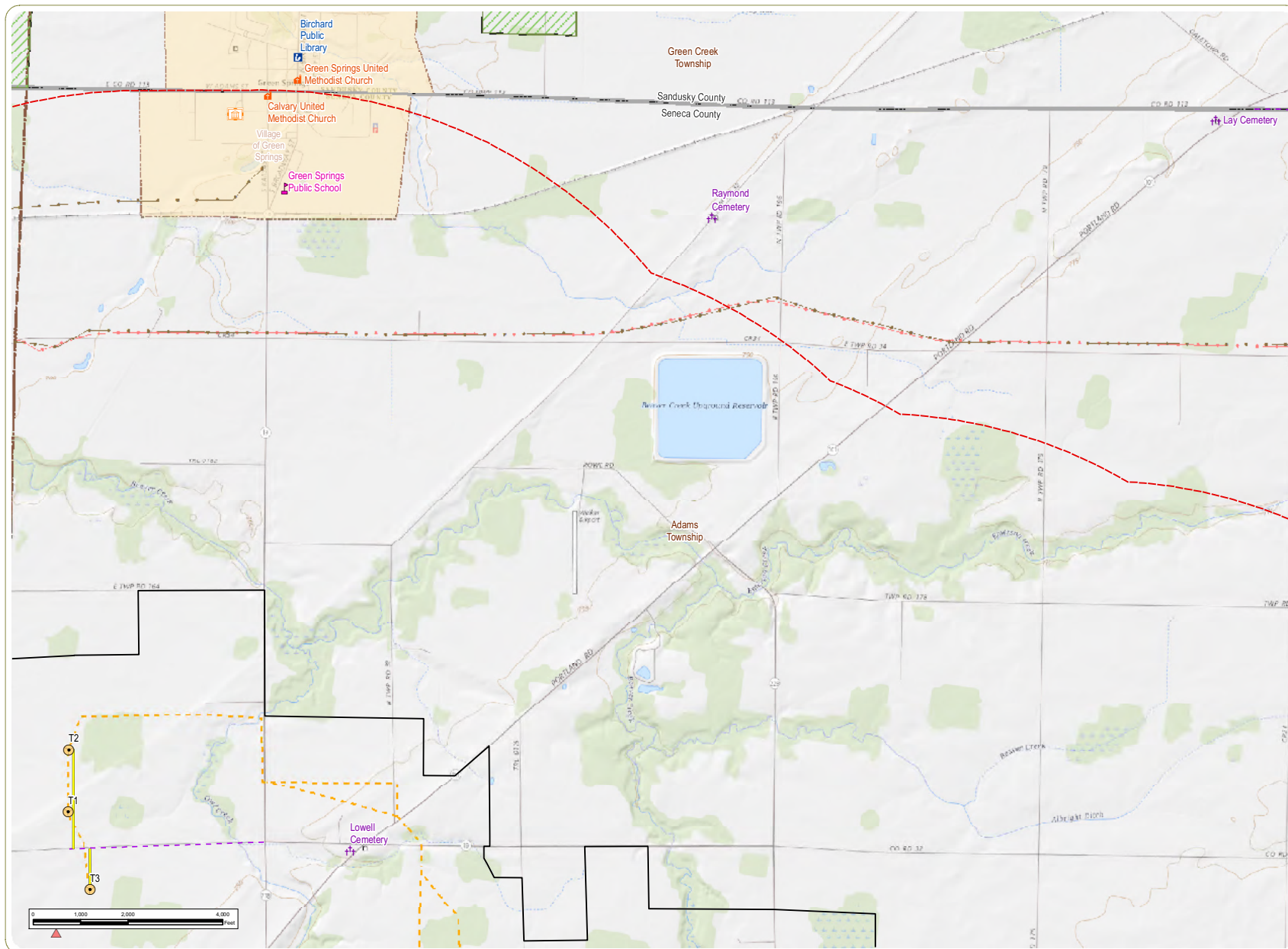
- Cemetery
- Place of Worship
- Existing Transmission Line
- Gas Transmission Pipeline
- Hazardous Liquid Pipeline
- ODNR Land
- Project Boundary
- 2-Mile Study Area
- Township Boundary
- County Boundary



Sheet 1 of 13

**Notes:** 1. Basemap: USGS The National Map (2018). 2. This map was generated in ArcMap on December 13, 2018. 3. This is a color graphic. Reproduction in grayscale may misrepresent the data. 4. Facility components provided by Apex; additional data obtained from publicly available sources. 5. Map Scale 1: 24,000.



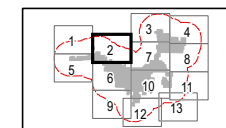


## Republic Wind Farm

Adams, Pleasant, Reed, Scipio, and Thompson Townships, Seneca County, and York Township, Sandusky County, Ohio

**Figure 03-1: Geography and Topography**

- Wind Turbine
- Met Tower
- Cemetery
- Government Office
- Library
- Place of Worship
- School
- Access Road
- Collection Line
- Facility Delivery Route
- Gas Transmission Pipeline
- Hazardous Liquid Pipeline
- ODNR Land
- Project Boundary
- 2-Mile Study Area
- City/Village Boundary
- Township Boundary
- County Boundary



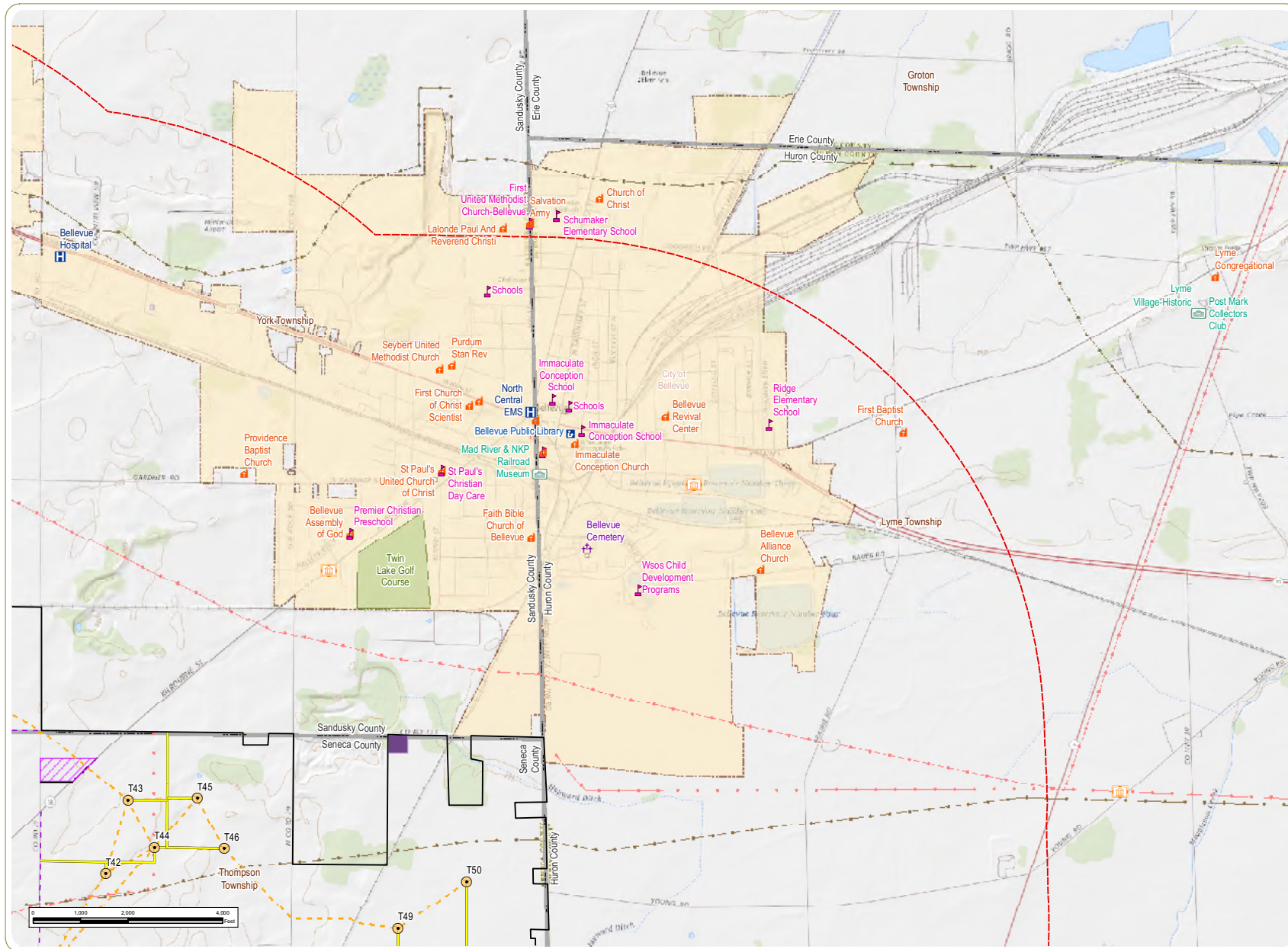
Sheet 2 of 13

**Notes:** 1. Basemap: USGS The National Map (2018). 2. This map was generated in ArcMap on December 13, 2018. 3. This is a color graphic. Reproduction in grayscale may misrepresent the data. 4. Facility components provided by Apex; additional data obtained from publicly available sources. 5. Map Scale 1: 24,000.







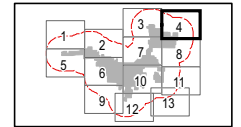


## Republic Wind Farm

Adams, Pleasant, Reed, Scipio, and Thompson Townships, Seneca County, and York Township, Sandusky County, Ohio

**Figure 03-1: Geography and Topography**

- Wind Turbine
- Cemetery
- Government Office
- Hospital/Polyclinic
- Library
- Museum
- Place of Worship
- School
- Access Road
- Collection Line
- Facility Delivery Route
- Gas Transmission Pipeline
- Hazardous Liquid Pipeline
- Laydown Yard
- O&M Facility
- Golf Course
- Project Boundary
- 2-Mile Study Area
- City/Village Boundary
- Township Boundary
- County Boundary

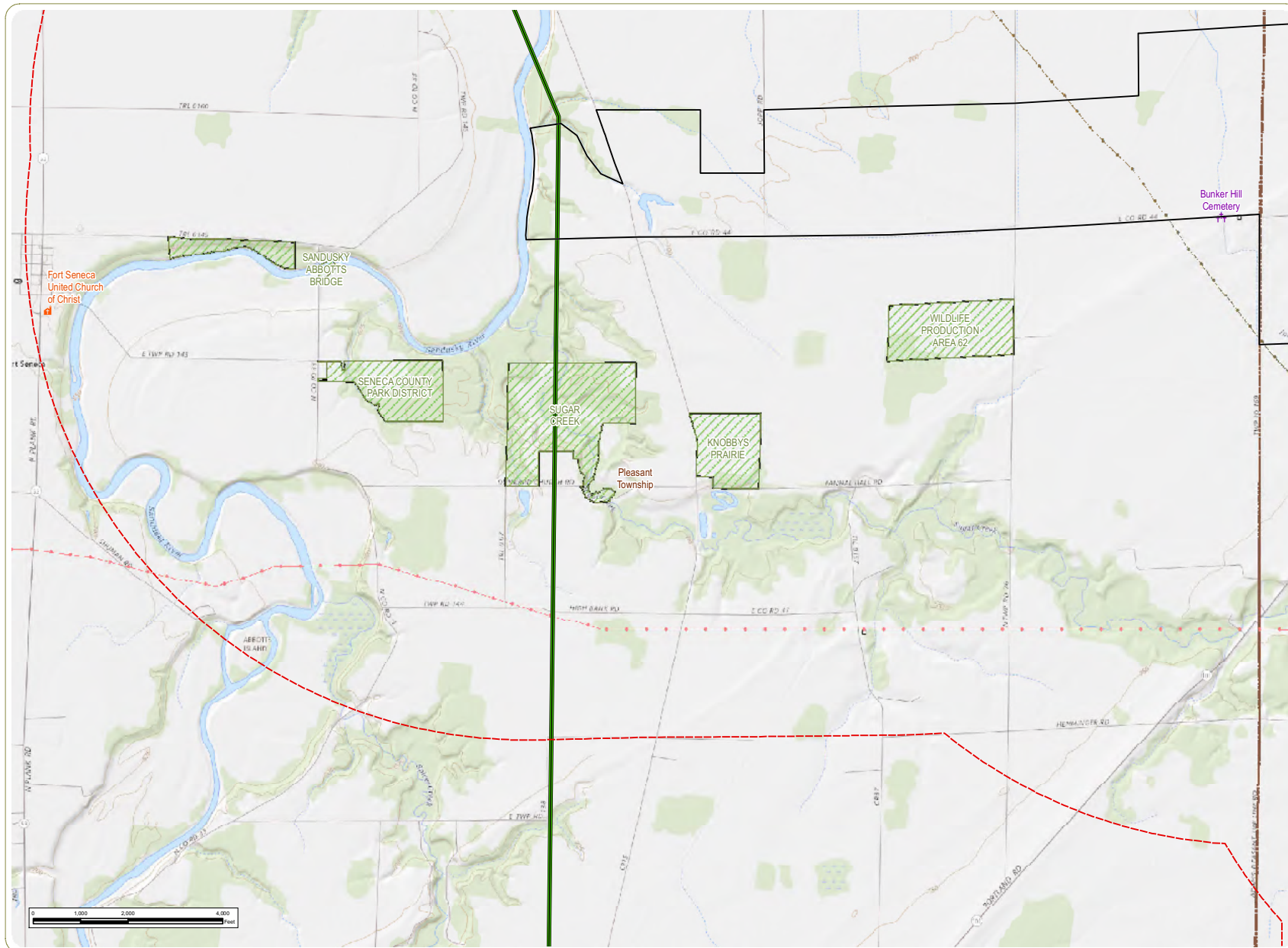


Sheet 4 of 13

**Notes:** 1. Basemap: USGS The National Map (2018). 2. This map was generated in ArcMap on December 13, 2018. 3. This is a color graphic. Reproduction in grayscale may misrepresent the data. 4. Facility components provided by Apex; additional data obtained from publicly available sources. 5. Map Scale 1: 24,000.





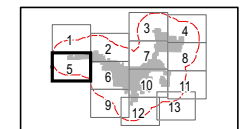


## Republic Wind Farm

Adams, Pleasant, Reed, Scipio, and Thompson Townships, Seneca County, and York Township, Sandusky County, Ohio

**Figure 03-1: Geography and Topography**

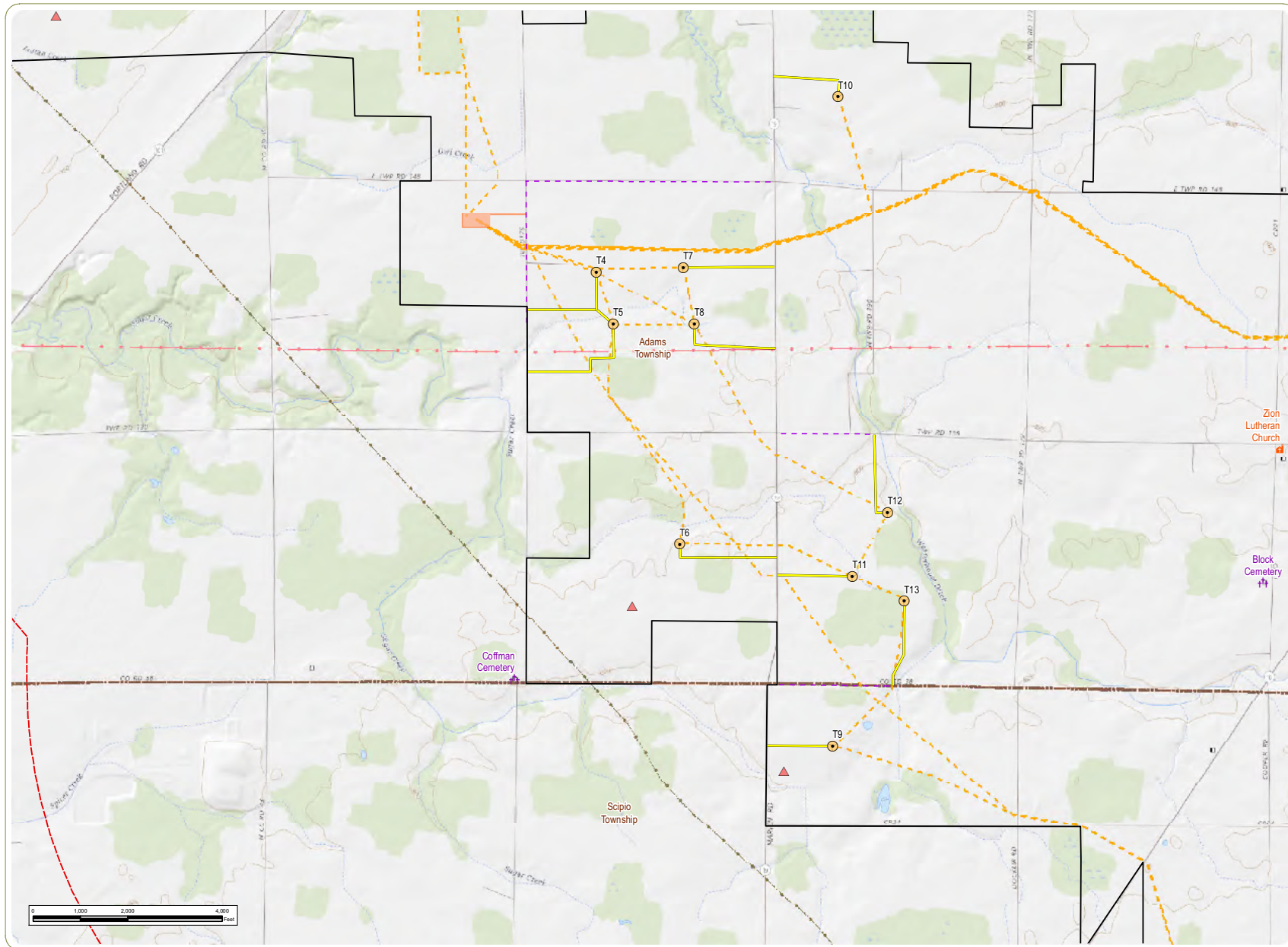
- Cemetery
- Place of Worship
- Existing Transmission Line
- Gas Transmission Pipeline
- Hazardous Liquid Pipeline
- ODNR Land
- Project Boundary
- 2-Mile Study Area
- Township Boundary
- County Boundary



Sheet 5 of 13

**Notes:** 1. Basemap: USGS The National Map (2018). 2. This map was generated in ArcMap on December 13, 2018. 3. This is a color graphic. Reproduction in grayscale may misrepresent the data. 4. Facility components provided by Apex; additional data obtained from publicly available sources. 5. Map Scale 1: 24,000.



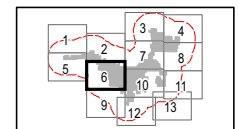


## Republic Wind Farm

Adams, Pleasant, Reed, Scipio, and Thompson Townships, Seneca County, and York Township, Sandusky County, Ohio

**Figure 03-1: Geography and Topography**

- Wind Turbine
- Met Tower
- Cemetery
- Place of Worship
- Access Road
- Collection Line
- Facility Delivery Route
- Gas Transmission Pipeline
- Hazardous Liquid Pipeline
- Collection Substation
- Project Boundary
- 2-Mile Study Area
- Township Boundary
- County Boundary

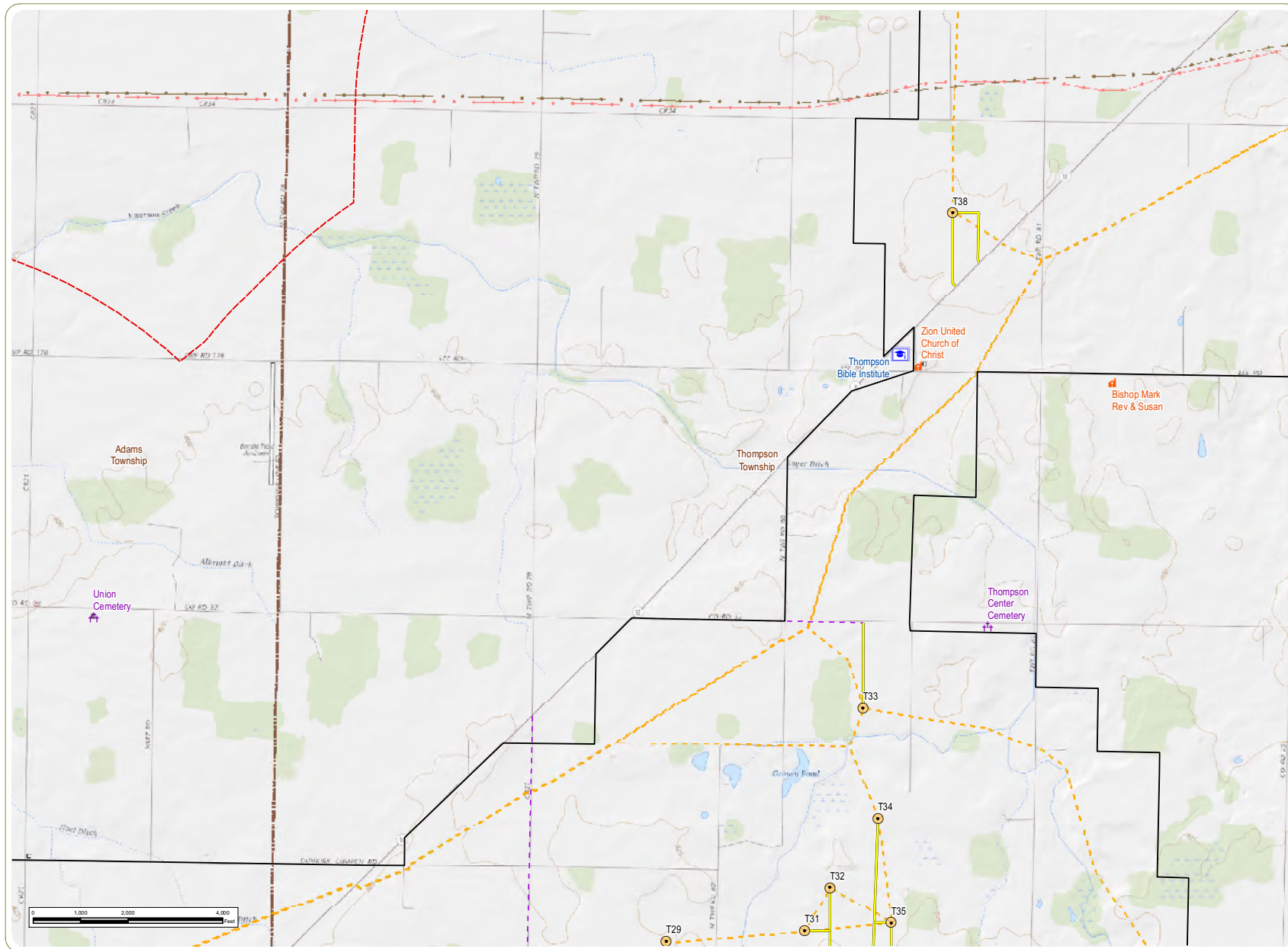


Sheet 6 of 13

**Notes:** 1. Basemap: USGS The National Map (2018). 2. This map was generated in ArcMap on December 13, 2018. 3. This is a color graphic. Reproduction in grayscale may misrepresent the data. 4. Facility components provided by Apex; additional data obtained from publicly available sources. 5. Map Scale 1: 24,000.





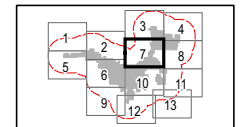


## Republic Wind Farm

Adams, Pleasant, Reed, Scipio, and Thompson Townships, Seneca County, and York Township, Sandusky County, Ohio

**Figure 03-1: Geography and Topography**

- Wind Turbine
- Cemetery
- College / University
- Place of Worship
- Access Road
- Collection Line
- Facility Delivery Route
- Gas Transmission Pipeline
- Hazardous Liquid Pipeline
- Project Boundary
- 2-Mile Study Area
- Township Boundary
- County Boundary

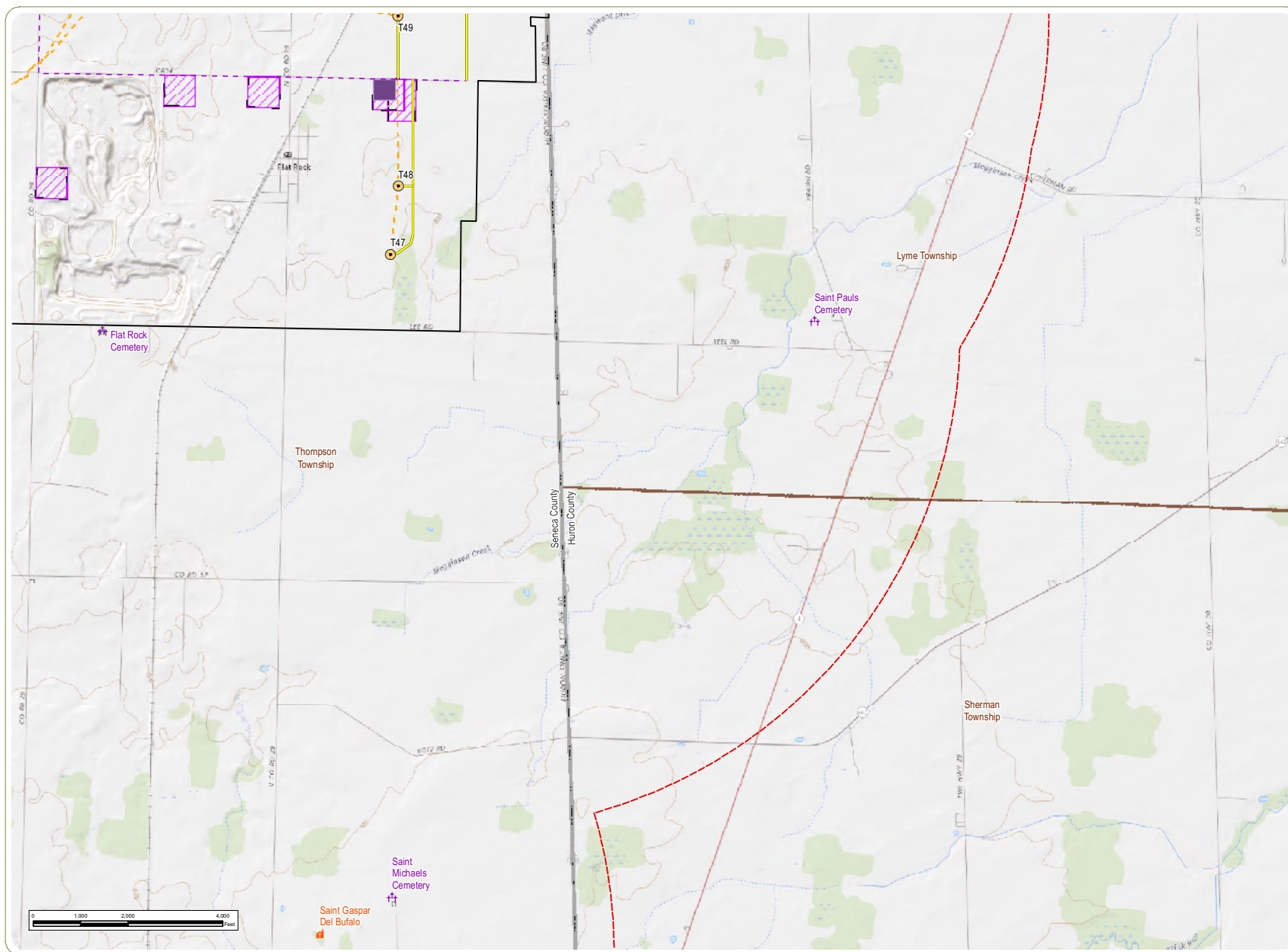


Sheet 7 of 13

**Notes:** 1. Basemap: USGS The National Map (2018). 2. This map was generated in ArcMap on December 13, 2018. 3. This is a color graphic. Reproduction in grayscale may misrepresent the data. 4. Facility components provided by Apex; additional data obtained from publicly available sources. 5. Map Scale 1: 24,000.



[www.edrdpc.com](http://www.edrdpc.com)

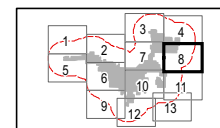


## Republic Wind Farm

Adams, Pleasant, Reed, Scipio, and Thompson Townships, Seneca County, and York Township, Sandusky County, Ohio

**Figure 03-1: Geography and Topography**

- Wind Turbine
- Cemetery
- Place of Worship
- Access Road
- Collection Line
- Facility Delivery Route
- Laydown Yard
- O&M Facility
- Project Boundary
- 2-Mile Study Area
- Township Boundary
- County Boundary



Sheet 8 of 13

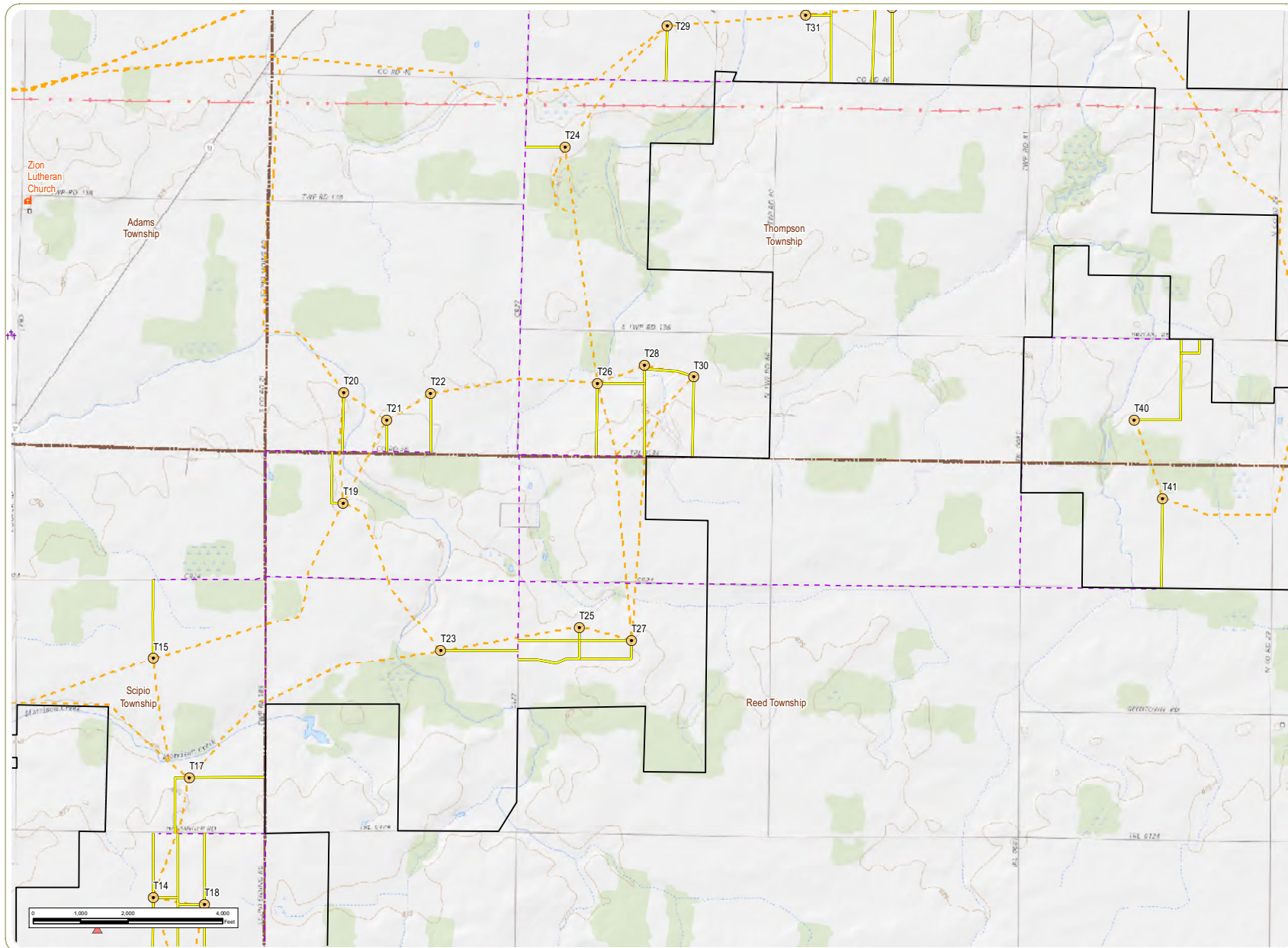
**Notes:** 1. Basemap: USGS The National Map (2018). 2. This map was generated in ArcMap on December 13, 2018. 3. This is a color graphic. Reproduction in grayscale may misrepresent the data. 4. Facility components provided by Apex; additional data obtained from publicly available sources. 5. Map Scale 1: 24,000.



www.edrdpc.com





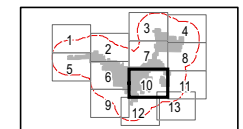


## Republic Wind Farm

Adams, Pleasant, Reed, Scipio, and Thompson Townships, Seneca County, and York Township, Sandusky County, Ohio

**Figure 03-1: Geography and Topography**

- Wind Turbine
- Met Tower
- Cemetery
- Place of Worship
- Access Road
- Collection Line
- Facility Delivery Route
- Hazardous Liquid Pipeline
- Project Boundary
- 2-Mile Study Area
- Township Boundary
- County Boundary

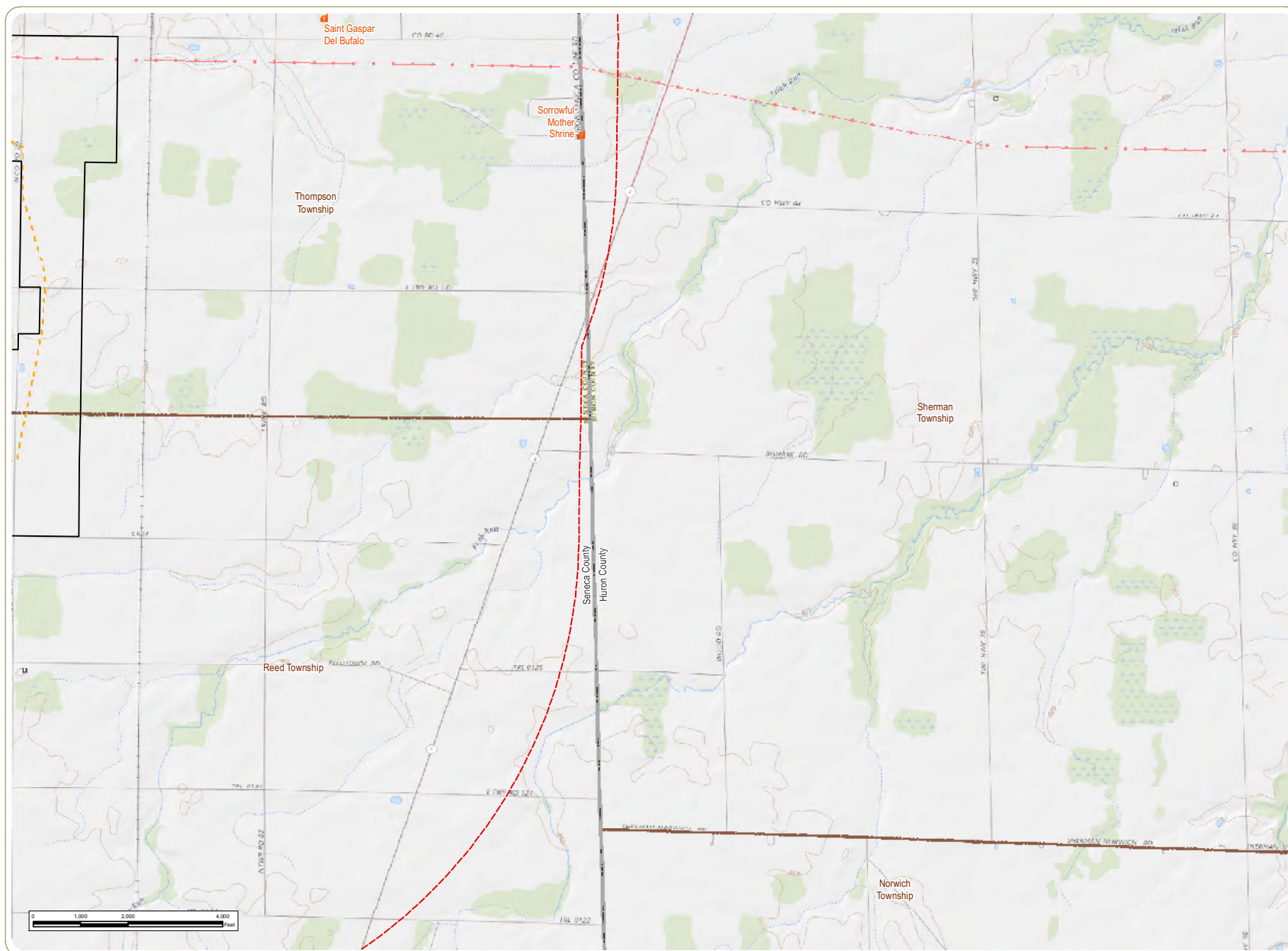


Sheet 10 of 13

**Notes:** 1. Basemap: USGS The National Map (2018). 2. This map was generated in ArcMap on December 13, 2018. 3. This is a color graphic. Reproduction in grayscale may misrepresent the data. 4. Facility components provided by Apex; additional data obtained from publicly available sources. 5. Map Scale 1: 24,000.





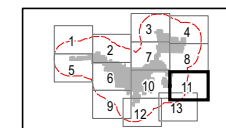


## Republic Wind Farm

Adams, Pleasant, Reed, Scipio, and Thompson Townships, Seneca County, and York Township, Sandusky County, Ohio

**Figure 03-1: Geography and Topography**

- Place of Worship
- Collection Line
- Hazardous Liquid Pipeline
- Project Boundary
- 2-Mile Study Area
- Township Boundary
- County Boundary

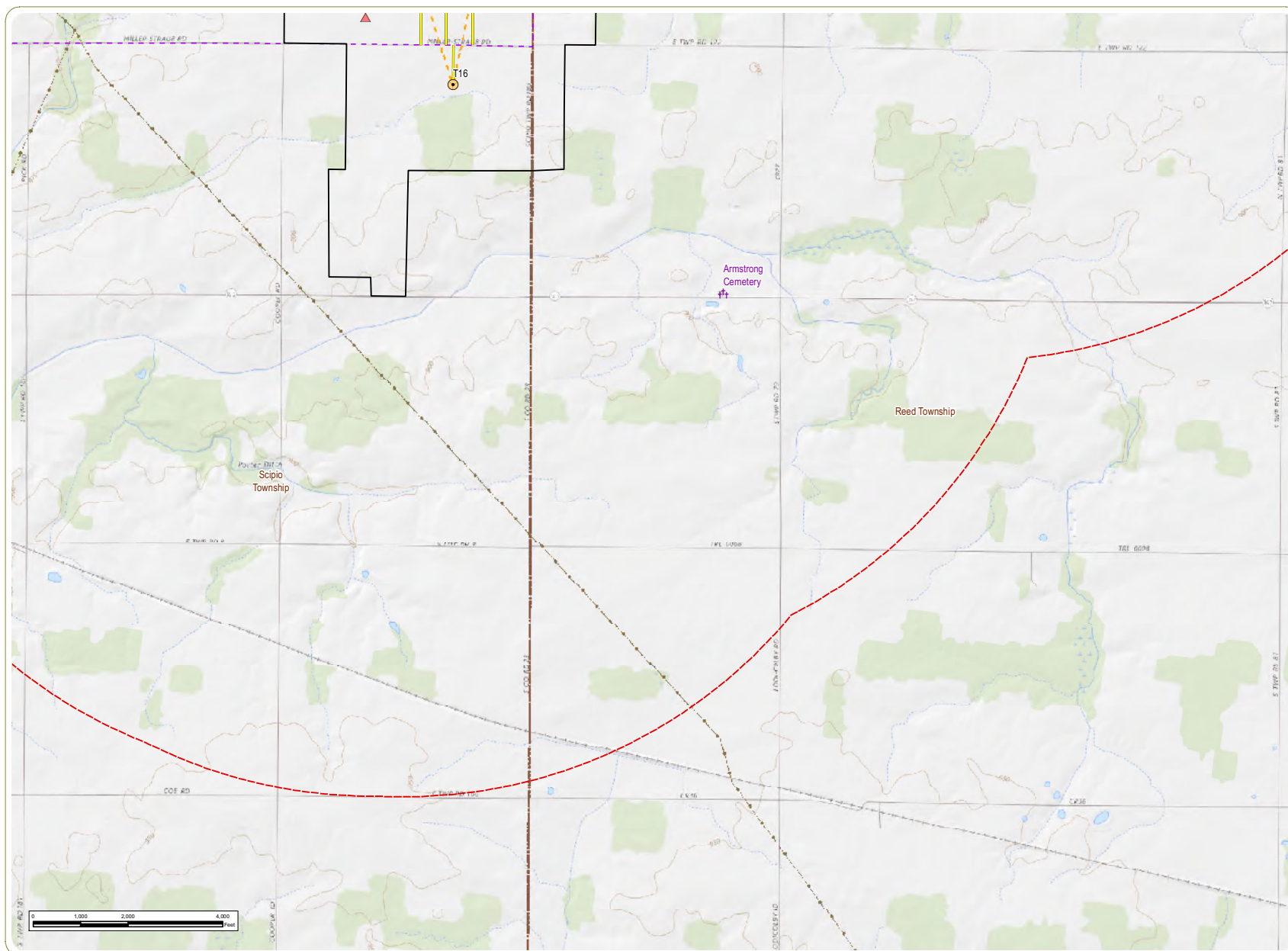


Sheet 11 of 13

**Notes:** 1. Basemap: USGS The National Map (2018). 2. This map was generated in ArcMap on December 13, 2018. 3. This is a color graphic. Reproduction in grayscale may misrepresent the data. 4. Facility components provided by Apex; additional data obtained from publicly available sources. 5. Map Scale 1: 24,000.



[www.edrdpc.com](http://www.edrdpc.com)

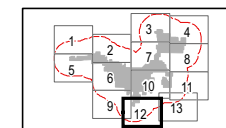


## Republic Wind Farm

Adams, Pleasant, Reed, Scipio, and Thompson Townships, Seneca County, and York Township, Sandusky County, Ohio

**Figure 03-1: Geography and Topography**

- Wind Turbine
- ▲ Met Tower
- ✚ Cemetery
- Access Road
- - - Collection Line
- - - Facility Delivery Route
- Gas Transmission Pipeline
- ▭ Project Boundary
- - - 2-Mile Study Area
- - - Township Boundary
- ▭ County Boundary

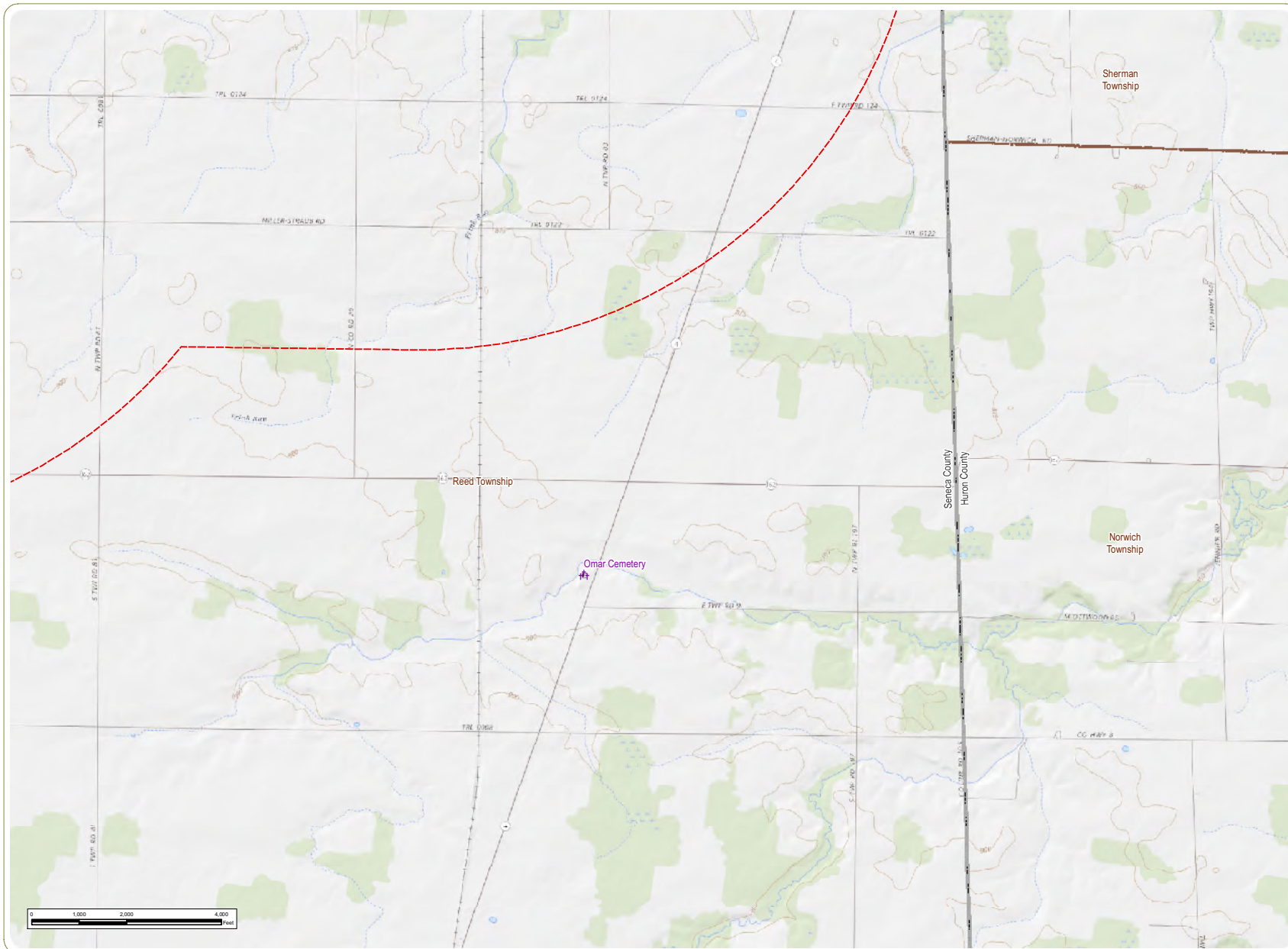


Sheet 12 of 13

**Notes:** 1. Basemap: USGS The National Map (2018). 2. This map was generated in ArcMap on December 13, 2018. 3. This is a color graphic. Reproduction in grayscale may misrepresent the data. 4. Facility components provided by Apex; additional data obtained from publicly available sources. 5. Map Scale 1: 24,000.





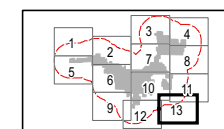


## Republic Wind Farm

Adams, Pleasant, Reed, Scipio, and Thompson Townships, Seneca County, and York Township, Sandusky County, Ohio

**Figure 03-1: Geography and Topography**

- Cemetery
- 2-Mile Study Area
- Township Boundary
- County Boundary



Sheet 13 of 13

**Notes:** 1. Basemap: USGS The National Map (2018). 2. This map was generated in ArcMap on December 13, 2018. 3. This is a color graphic. Reproduction in grayscale may misrepresent the data. 4. Facility components provided by Apex; additional data obtained from publicly available sources. 5. Map Scale 1: 24,000.



**This foregoing document was electronically filed with the Public Utilities**

**Commission of Ohio Docketing Information System on**

**12/26/2018 11:42:24 AM**

**in**

**Case No(s). 17-2295-EL-BGN**

Summary: Application Figures03-1 electronically filed by Teresa Orahood on behalf of Dylan F. Borchers