

## **Section 4906-4-08: Figures**

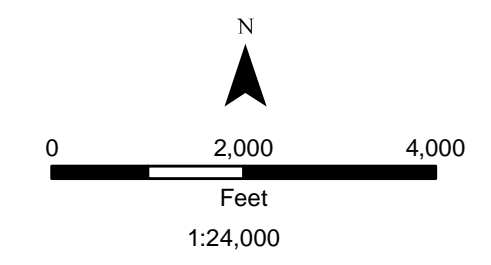
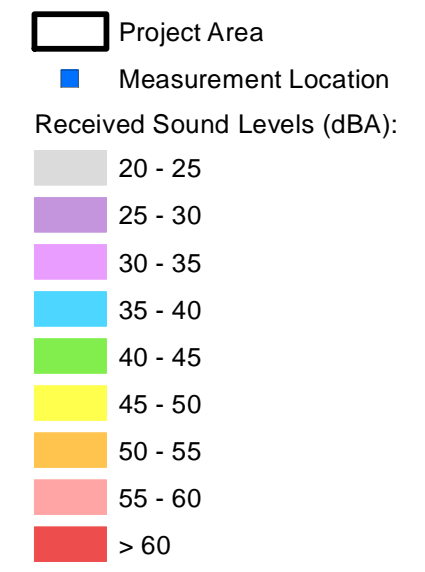
---

- **Figure 08-1: Received Sound Levels**
- **Figure 08-2: Water Wells and Water Protection Areas**
- **Figure 08-3: Groundwater Resources (2 Sheets)**
- **Figure 08-4: Floodplains and Soils**
- **Figure 08-5: Existing Oil, Gas, and Injection Wells**
- **Figure 08-6: Natural Resources within One-Half Mile**
- **Figure 08-7: Delineated Wetlands**
- **Figure 08-8: Ecological Impacts**
- **Figure 08-9: Ecological Communities**
- **Figure 08-10: Land Use within One Mile**
- **Figure 08-11: Structures within 1,500 feet of the Project Area**
- **Figure 08-12: Structures within 250 feet of Project Components**
- **Figure 08-13: Cultural Resource and Recreational Areas (27 Sheets)**
- **Figure 08-14: Viewshed Map (Leaf On)**
- **Figure 08-15: Photographic Simulations**
- **Figure 08-16: Agricultural Land**

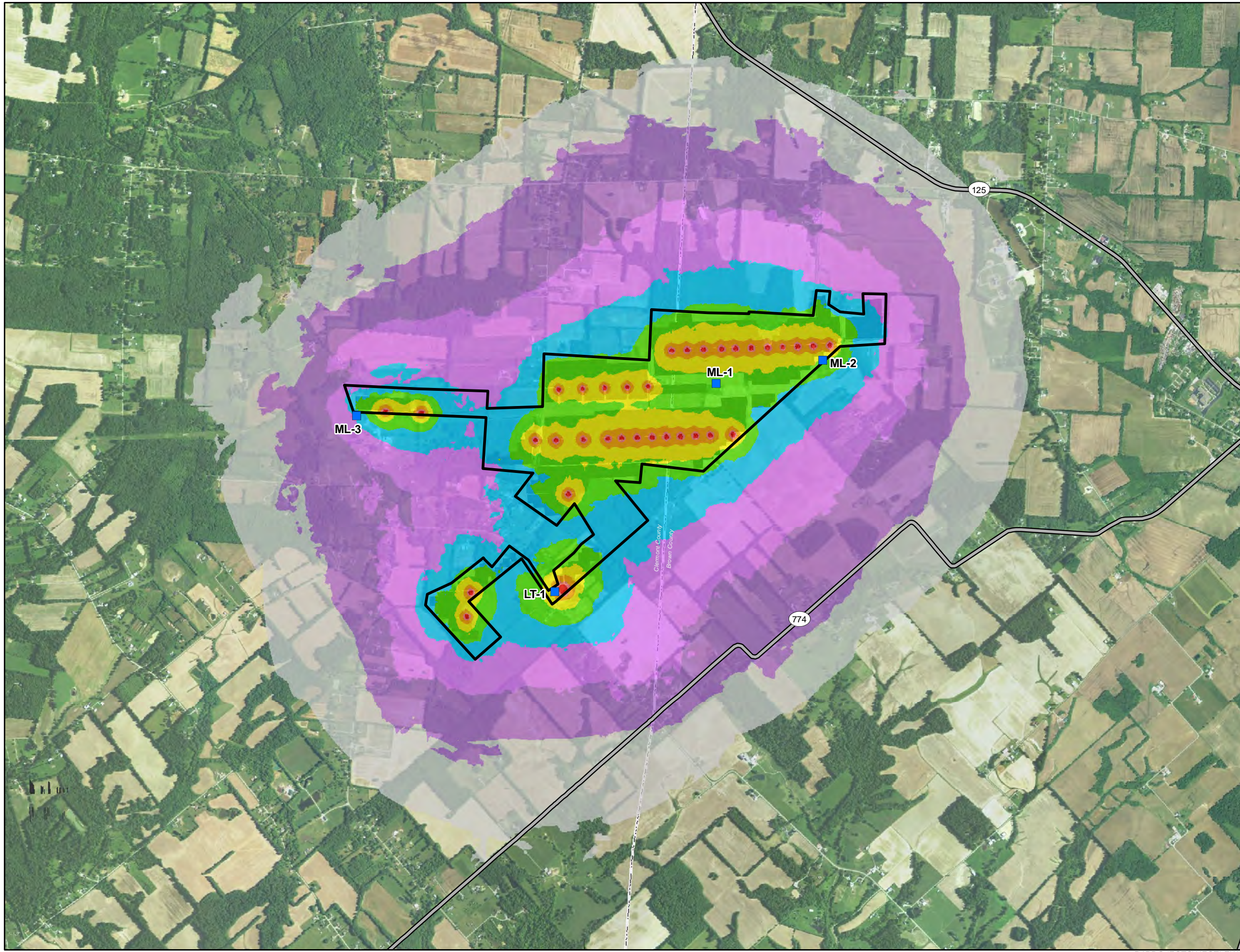


**Figure 08-1**  
**Received Sound Levels**

Nestlewood Solar  
Brown and Clermont Counties, Ohio









Source: NAIP (2017)

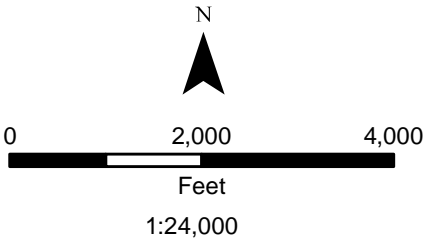




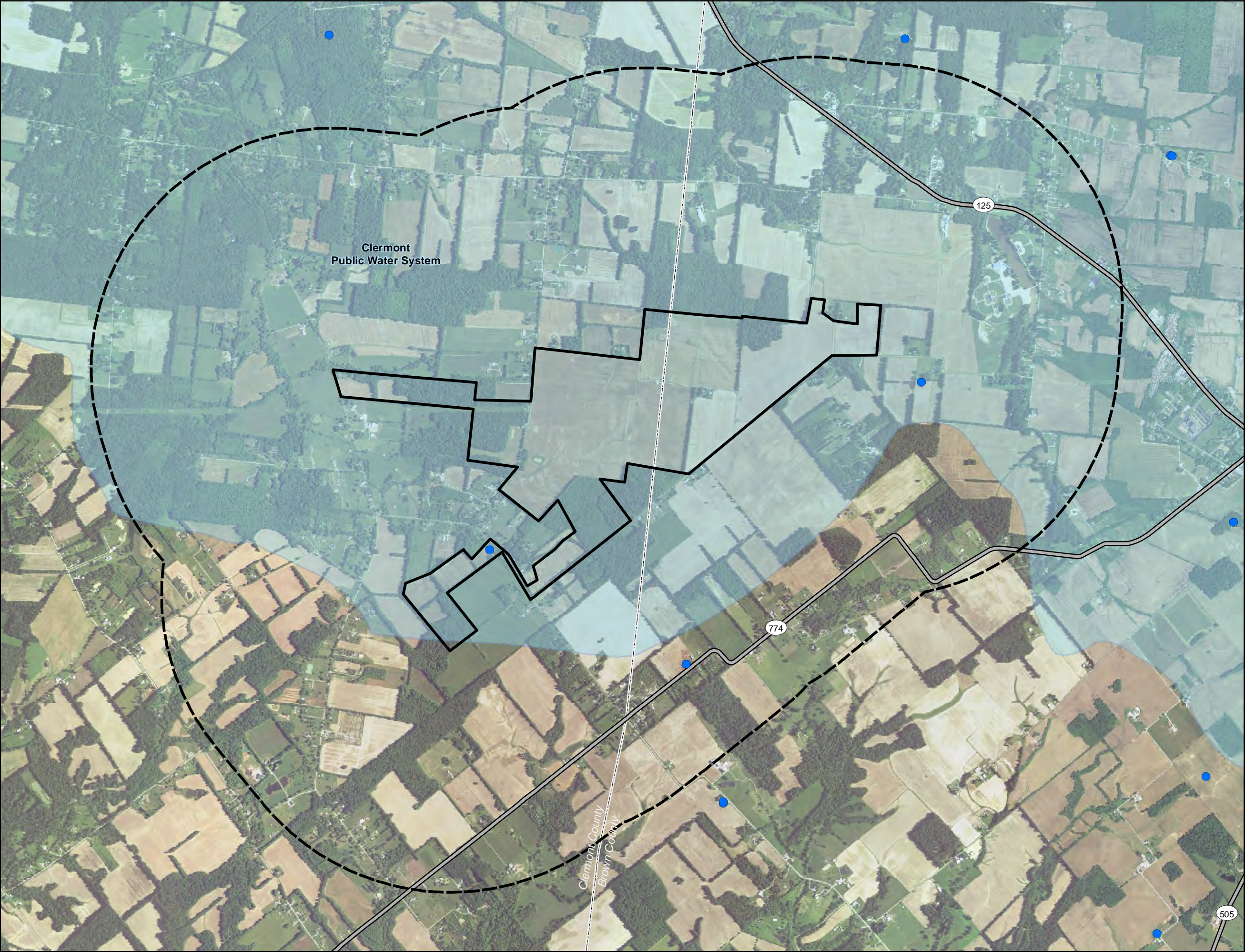
**Figure 08-2**  
**Water Wells and**  
**Water Protection Areas**

Nestlewood Solar  
Brown and Clermont Counties, Ohio

-  Project Area
-  1-mile Buffer
-  Source Water Protection Area
-  Water Well
-  Highway
-  County Boundary



Source: NAIP (2017), ODNR (2018), OEPA (2018)





## Nestlewood Solar

Clermont and Brown Counties, Ohio

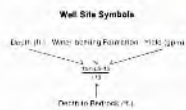
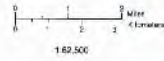




# Figure 08-3 Groundwater Resources Sheet 2 of 2

Nestlewood Solar  
Clermont and Brown Counties, Ohio

## Ground-Water Resources of CLERMONT COUNTY by Alfred C. Walker



0 - Sand  
 1 - Gravel  
 2 - Sand & Gravel  
 3 - Unconsolidated  
 4 - Shale

• Well Site  
 ○ Hydraulic  
 □ Hydraulic of Well  
 A Chemical Analysis

**Chemical Analysis Table**

Well Site	A	B	C	D	E
Depth of well (ft.)	30	10	30	30	10
Anytime	0-4	0-4	0-4	0-4	0-4
Hardness as CaCO <sub>3</sub>	—	—	—	200	200
pH	7.2	7.4	7.2	7.3	7.3
Aluminum (ppm)	0.05	0.05	0.05	0.05	0.05
Sulfate (SO <sub>4</sub> )	41.0	45.0	50.0	41.2	39.2
Chloride (Cl)	11.0	12.0	10.0	10.1	10.2
Fluoride (F)	0.14	0.16	0.1	0.3	0.20
Iron (ppm)	0.05	0.05	0.05	0.05	0.05
Manganese (Mn)	0.10	0.10	0.10	0.10	0.10

(Concentrations in mg per liter (ppm))

### Legend

○ General Project Area  
 Well Yields

- AREAS IN WHICH THE DEPTHS OF SEVERAL HUNDRED FEET DEEPER PER MINUTE CAN BE DEVELOPED**  
 These areas are sand and gravel deposits adjacent to the Little Miami and Ohio Rivers. They contain the best groundwater resources in Clermont County. Yields are mostly in the 100 to 200 gallons per minute range, but some are as high as 300 gpm.
- AREAS IN WHICH YIELDS OF AS MUCH AS 100 GALLONS PER MINUTE CAN BE DEVELOPED**  
 These areas contain the best groundwater resources in Clermont County. Yields are mostly in the 100 to 200 gallons per minute range, but some are as high as 300 gpm.
- AREAS IN WHICH YIELDS OF MORE THAN 10 GALLONS PER MINUTE CAN BE DEVELOPED**  
 These areas contain the best groundwater resources in Clermont County. Yields are mostly in the 100 to 200 gallons per minute range, but some are as high as 300 gpm.
- AREAS IN WHICH THE DEPTHS OF 10 GALLONS PER MINUTE CAN BE DEVELOPED**  
 These areas contain the best groundwater resources in Clermont County. Yields are mostly in the 100 to 200 gallons per minute range, but some are as high as 300 gpm.
- AREAS IN WHICH YIELDS BELOW 10 GALLONS PER MINUTE**  
 These areas contain the best groundwater resources in Clermont County. Yields are mostly in the 100 to 200 gallons per minute range, but some are as high as 300 gpm.

Note: Because water supplies in much of Clermont County are limited, a large part of the county is served by regional water systems.

The groundwater characteristics have been mapped regional by based upon interpretations of water well records and the Ohio Geological Survey hydrology. The data mapped were adjusted as to up to for the same stream segment or depending on the flow may be a result of the Ohio Geological Survey.



**Figure 08-4  
Floodplains and  
Soils**

Nestlewood Solar  
Brown and Clermont Counties, Ohio

Project Area

Highway

County Boundary

NRCS Soil Unit: Soil Name

Cle1A: Clermont silt loam, 0-1% slopes

JoR1A1: Jonesboro-Rossmoyne silt loams, 0-2% slopes

JoR1B1: Jonesboro-Rossmoyne silt loams, 2-6% slopes

JoR1B2: Jonesboro-Rossmoyne silt loams, 2-6% slopes, eroded

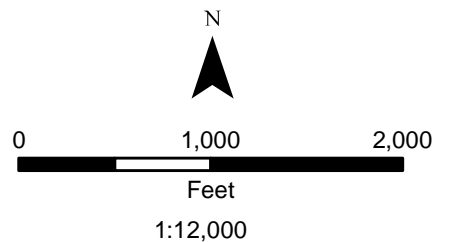
RpC2: Rossmoyne silt loam, 6-12% slopes, eroded

RsC3: Rossmoyne silty clay loam, 6-12% slopes, severely eroded

WsS1A1: Westboro-Schaffer silt loams, 0-2% slopes

WsS1B1: Westboro-Schaffer silt loams, 2-4% slopes

Note: Map extent not in Flood Hazard Area



Source: FEMA (2018), NAIP (2017), NRCS (2018)

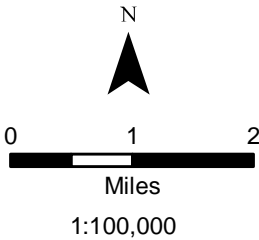




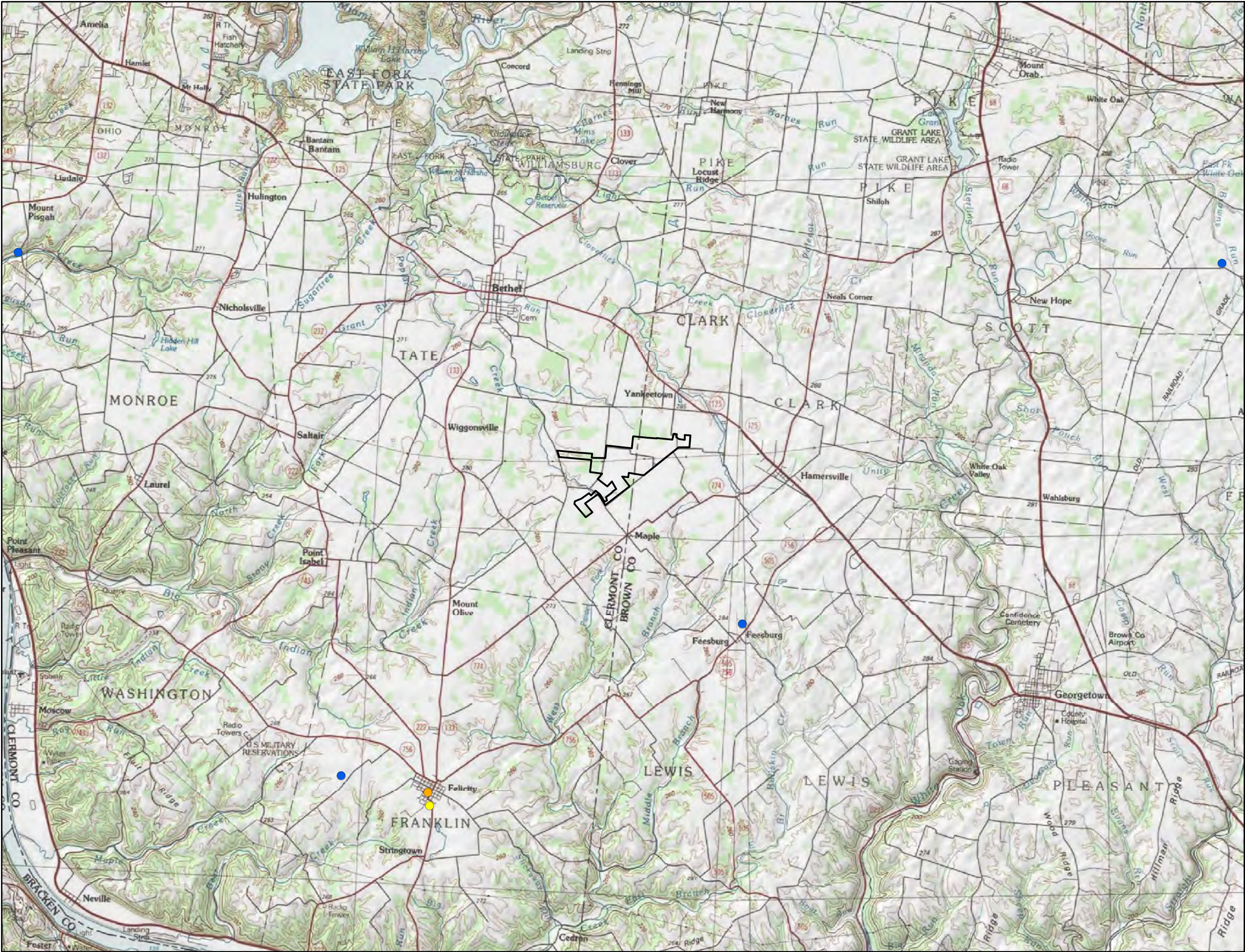
Figure 08-5  
Existing Gas and Oil Wells,  
and Injection Wells

Nestlewood Solar  
Brown and Clermont Counties, Ohio

- Project Area
- Oil and Gas Wells
  - Dry hole
  - Gas
  - Plugged oil and gas









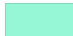



Source: USGS (1985), OHDNR (2018)



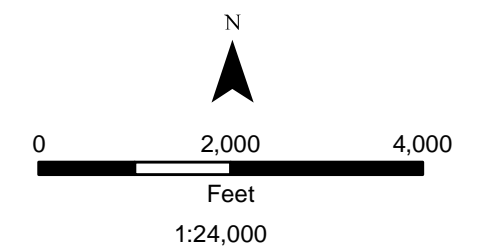


**Figure 08-6**  
**Ecological Resources**

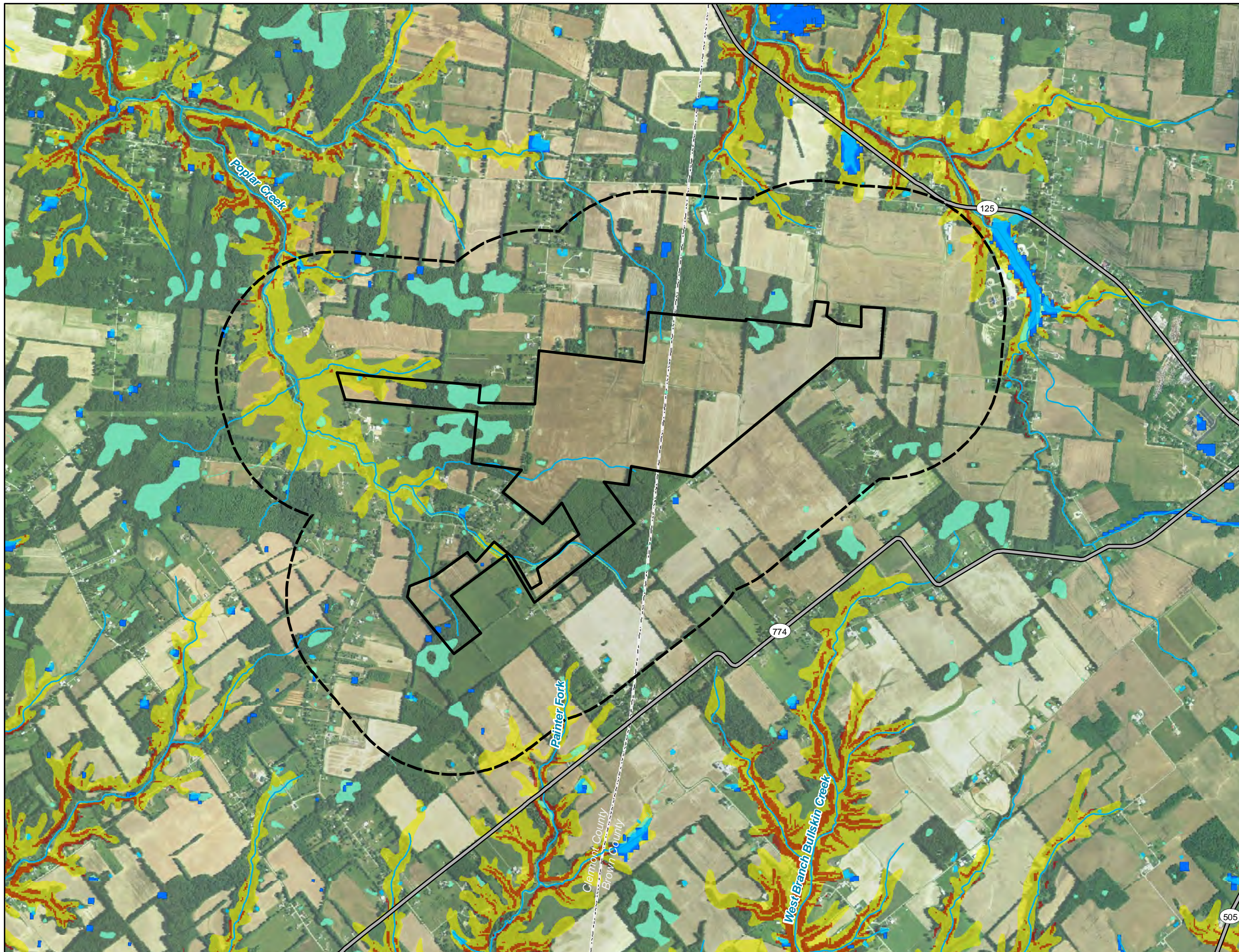
Nestlewood Solar  
Brown and Clermont Counties, Ohio

-  Project Area
-  0.5-mile Buffer
-  Highway
-  County Boundary
-  NHD Stream
-  NHD Waterbody
-  NWI Wetland
-  OWI Wetland
-  Slope > 12%
-  Highly Erodible Soils

Note: No game preserves, wildlife areas, nature preserves or other conservation areas appear within the scope of this image.



Source: NAIP (2017)

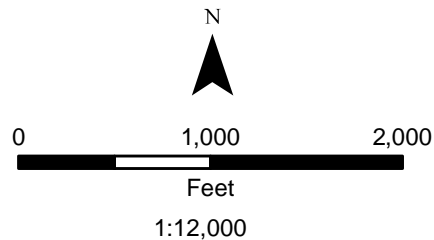




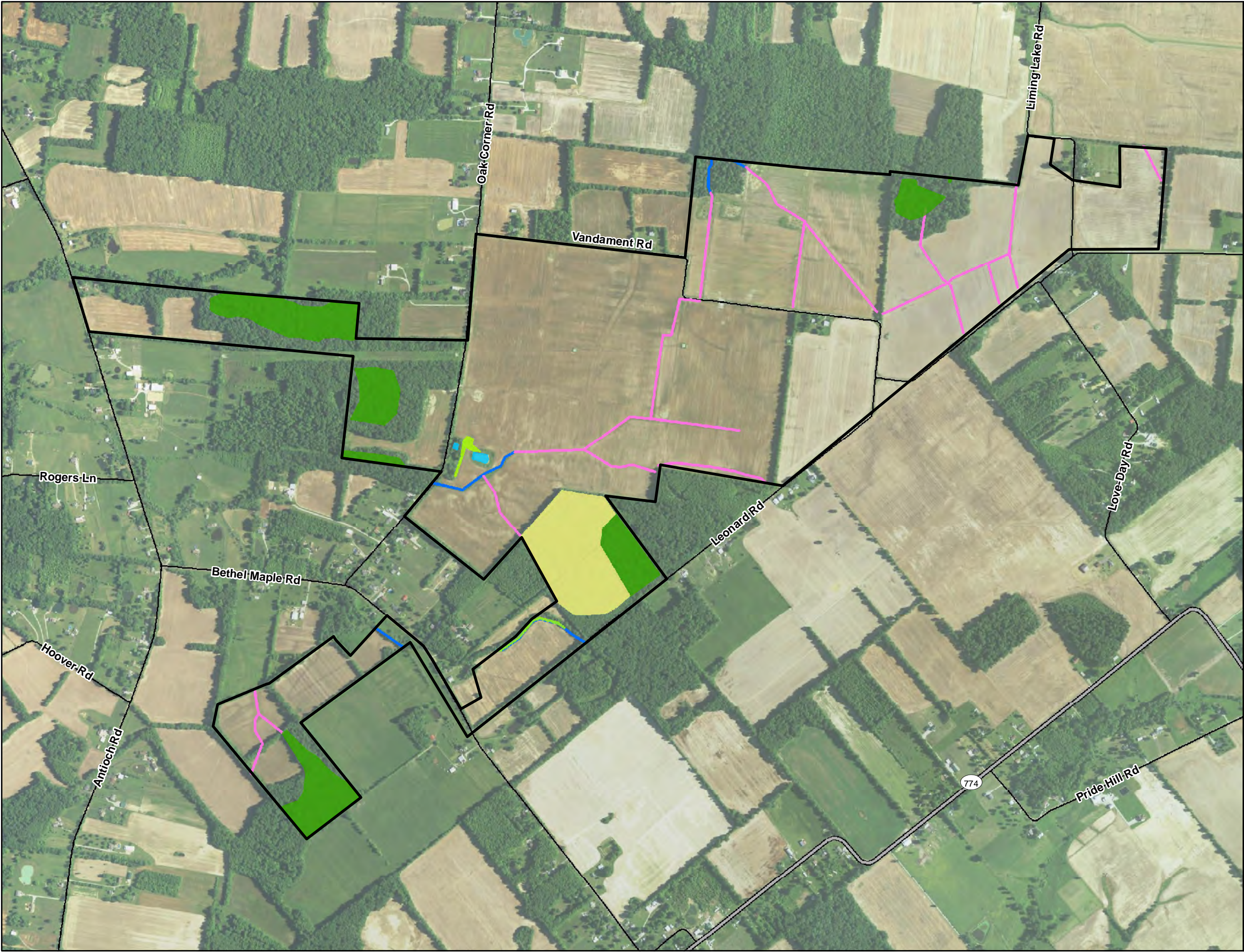
**Figure 08-7  
Delineated Wetlands**

Nestlewood Solar  
Brown and Clermont Counties, Ohio

-  Project Area  
 Highway  
 Local Road
- Delineated Features**
-  Erosional Feature  
 Stream  
 Emergent Wetland  
 Forested Wetland  
 Scrub/Shrub Wetland  
 Open Water



Source: ESRI (2016), NAIP (2017)

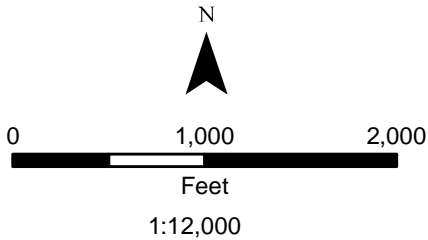




**Figure 08-8  
Ecological Impact**

Nestlewood Solar  
Brown and Clermont Counties, Ohio

- Project Area
- Potential Solar Arrays
- Project Substation
- Utility-Owned Switchyard
- Potential Collection Line
- Potential Gravel Road
- Highway
- Delineated Features
  - Stream
  - Wetland
  - Impacted Areas
  - Tree Clearing



Source: NAIP (2017)

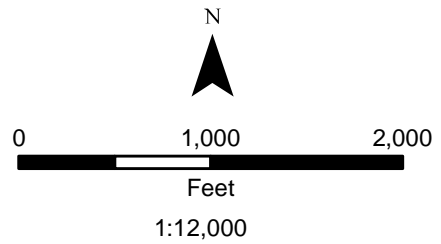




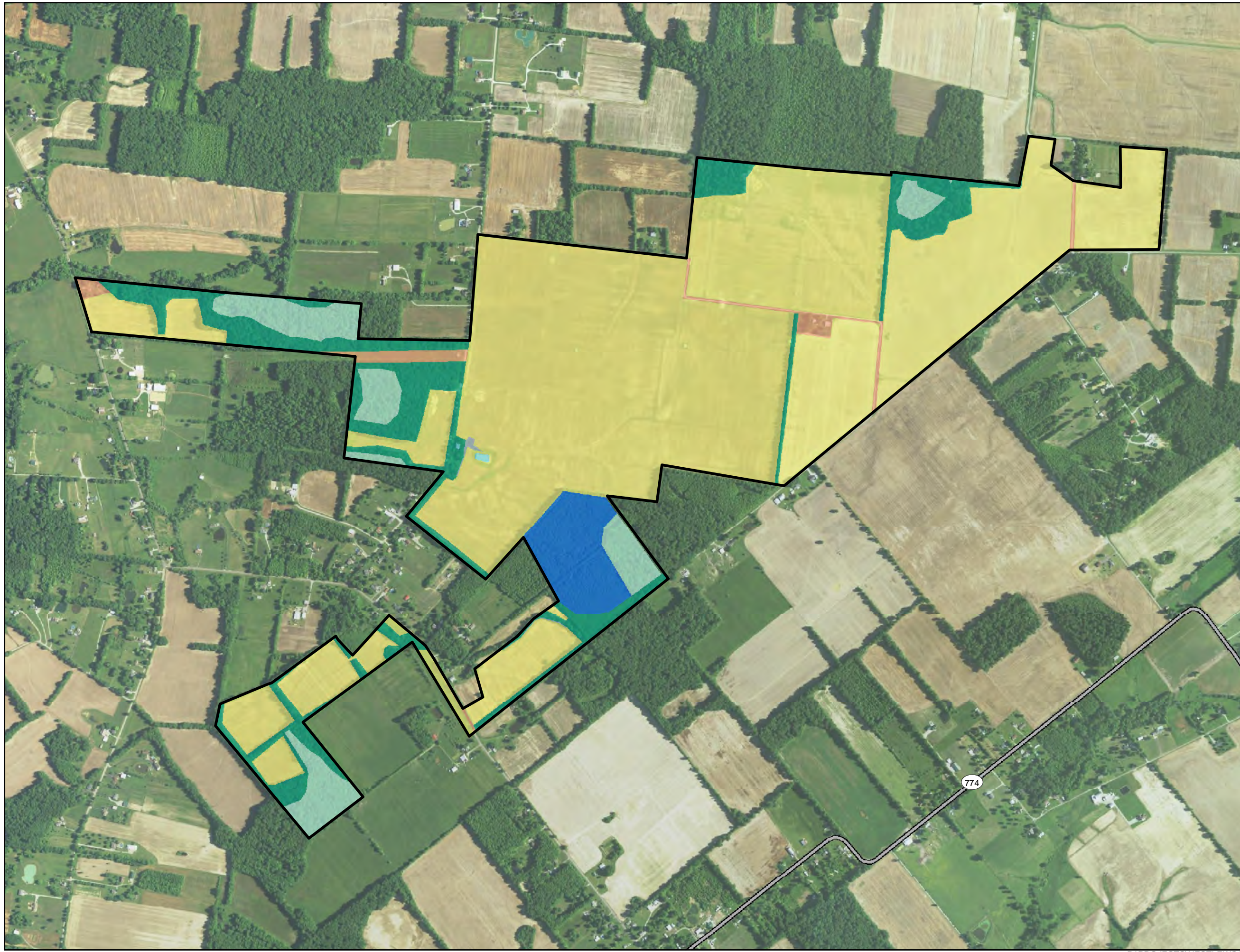
**Figure 08-9  
Ecological Communities**

Nestlewood Solar  
Brown and Clermont Counties, Ohio

-  Project Area
- Ecological Communities**
-  Agricultural
-  Developed
-  Forested
-  Wetland: Open Water
-  Wetland: Emergent Wetland
-  Wetland: Forested Wetland
-  Wetland: Scrub/Shrub Wetland
-  Highway
















Source: ESRI (2016), NAIP (2017)

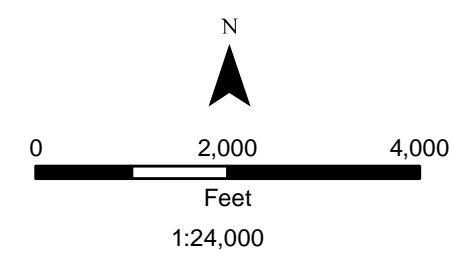




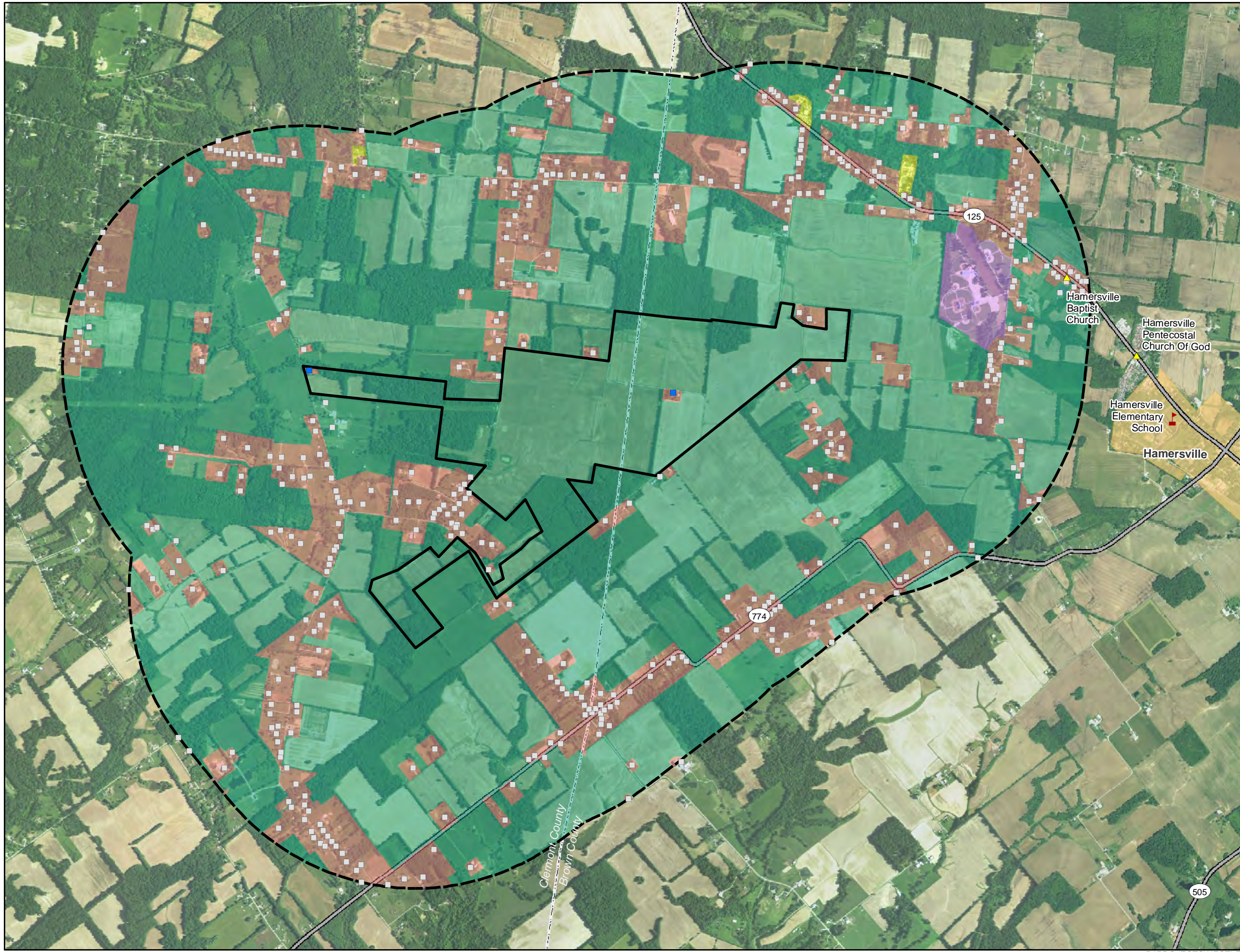
**Figure 08-10**  
**Land Use within One Mile**

Nestlewood Solar  
Brown and Clermont Counties, Ohio

-  Project Area
-  1-mile Buffer
-  School
-  Church
-  Residence
-  Residence to be Demolished
-  Highway
-  Census Designated Place
-  County Boundary
- Land Use**
-  Agriculture
-  Industrial
-  Recreational
-  Residential



Source: ESRI (2016), NAIP (2017)





**Figure 08-11**  
**Structures within 1,500 feet**  
**of the Project Area**

Nestlewood Solar  
Brown and Clermont Counties, Ohio

Project Area

1,500-foot Buffer

Structure Type

△

Barn

□

Garage

○

House

◇

Outbuilding

+

Silo

Structure Status

●

Participating

●

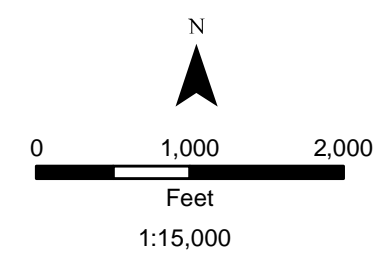
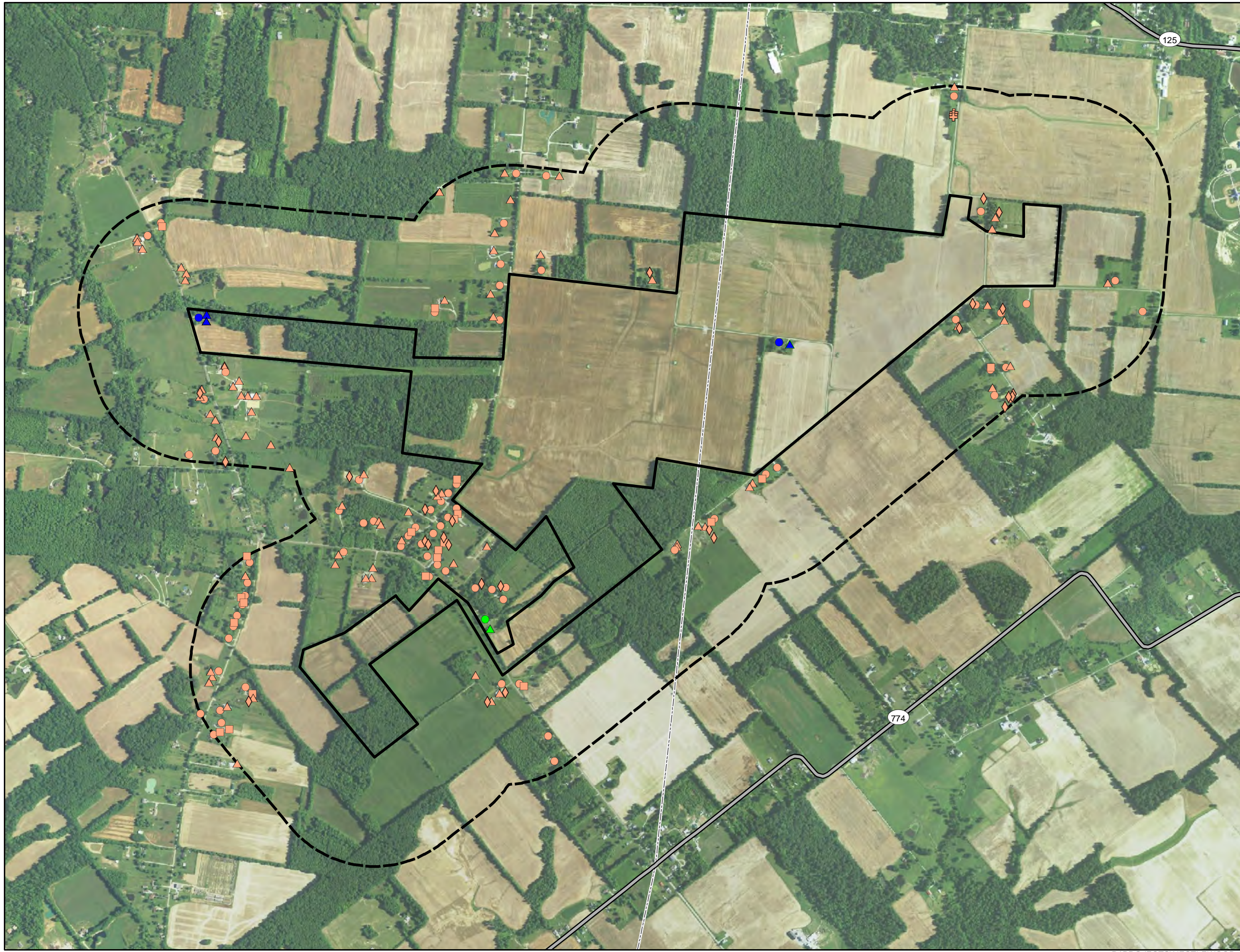
Non-Participating

●

Participating, to be demolished

Highway

County Boundary














Source: NAIP (2017)

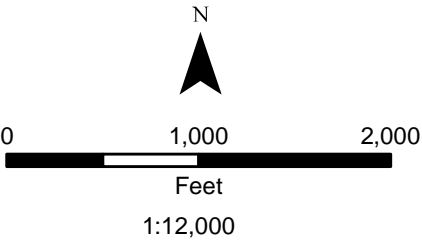




**Figure 08-12**  
**Structures within 250 feet**  
**of Project Components**

Nestlewood Solar  
Brown and Clermont Counties, Ohio

-  Project Area  
 250-foot Buffer
- Structure Type**
-  Barn
  -  Garage
  -  House
  -  Outbuilding
- Structure Status**
-  Participating
  -  Non-Participating
  -  Participating, to be demolished
-  Highway  
 County Boundary



Source: NAIP (2017)











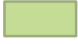



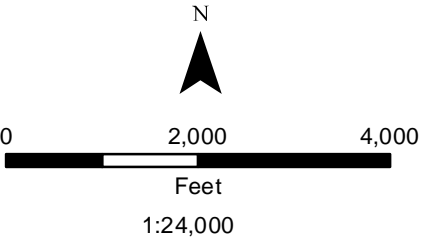


**Figure 08-13**  
**Cultural and Recreational**  
**Resources within Ten Miles**

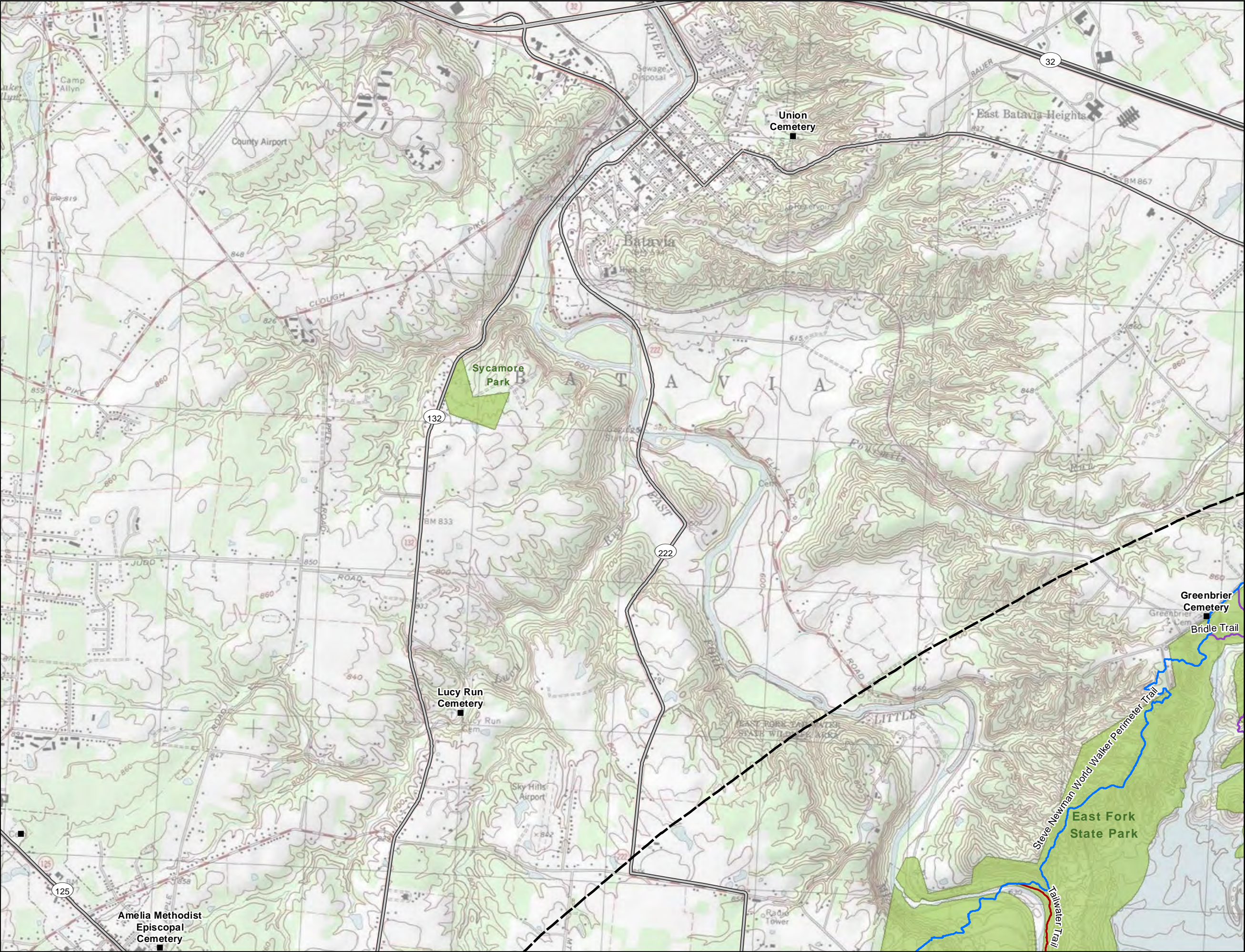
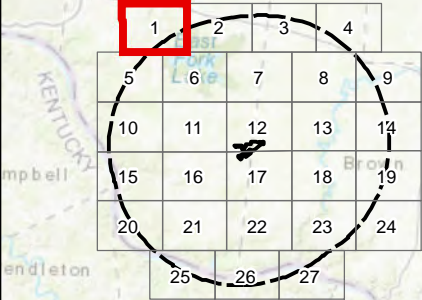
Sheet 1 of 27

Nestlewood Solar  
Brown and Clermont Counties, Ohio

-  Project Area
-  10-mile Buffer
-  Cemetery
-  NRHP Structure
-  Highway
-  Scenic Byway
- Trail Type
  -  Equestrian
  -  Hiking
  -  Mountain Bike
  -  Shared Use
-  Park
-  NRHP Historic District



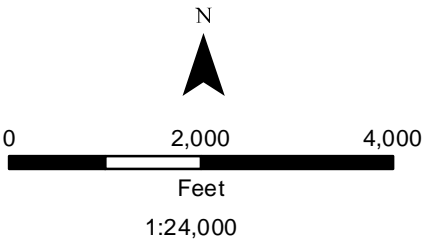
Source: ESRI (2016), NRHP (2018), ODNR (2018),  
ODOT (2018), USGS (1985)



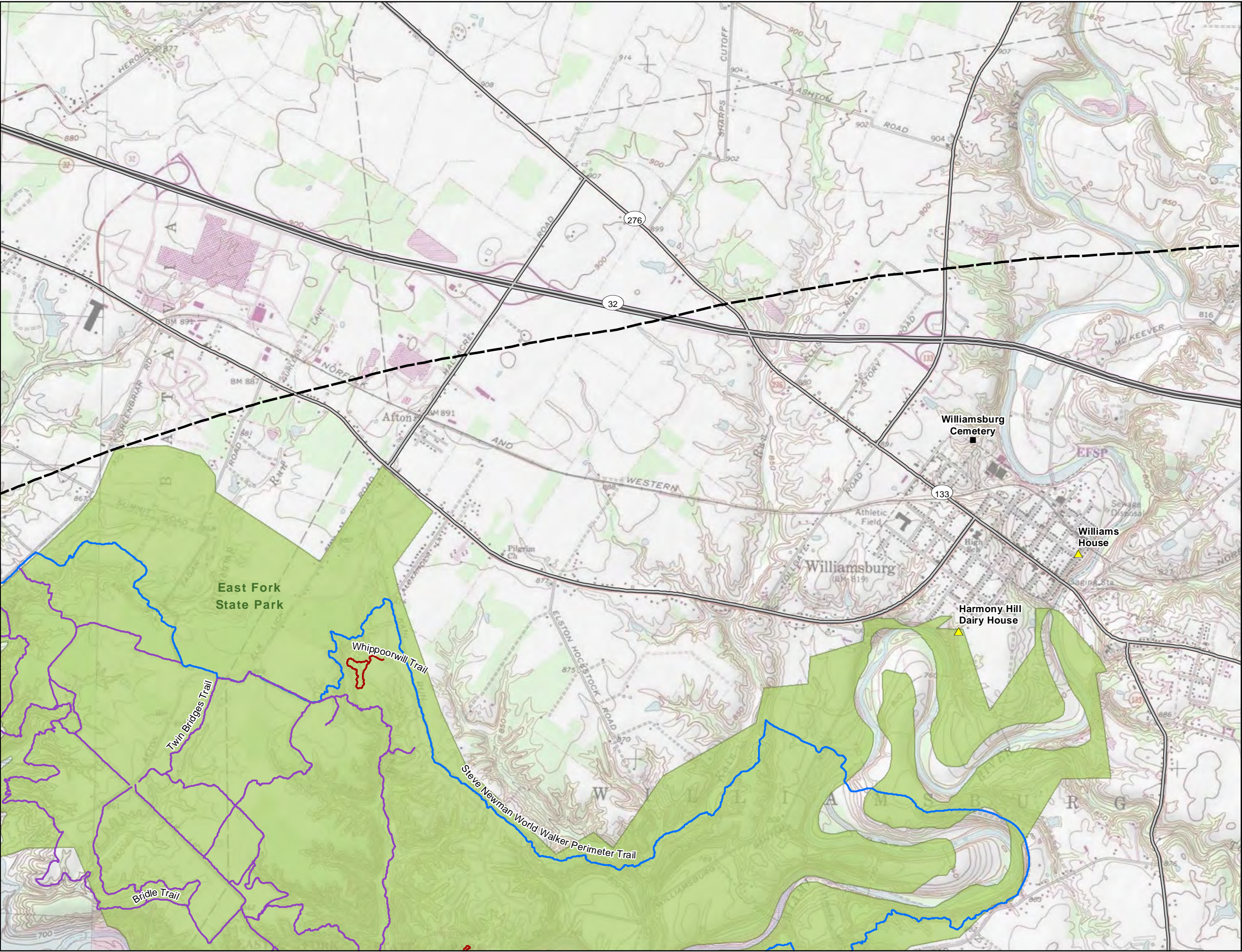
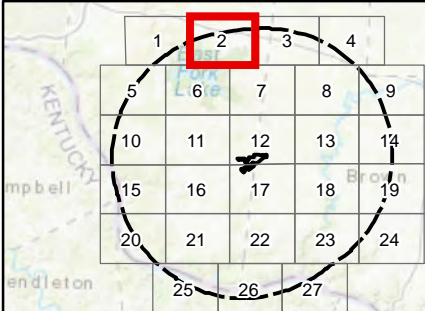


**Figure 08-13**  
**Cultural and Recreational**  
**Resources within Ten Miles**  
Sheet 2 of 27  
Nestlewood Solar  
Brown and Clermont Counties, Ohio

- Project Area
- 10-mile Buffer
- Cemetery
- NRHP Structure
- Highway
- Scenic Byway
- Trail Type
  - Equestrian
  - Hiking
  - Mountain Bike
  - Shared Use
- Park
- NRHP Historic District

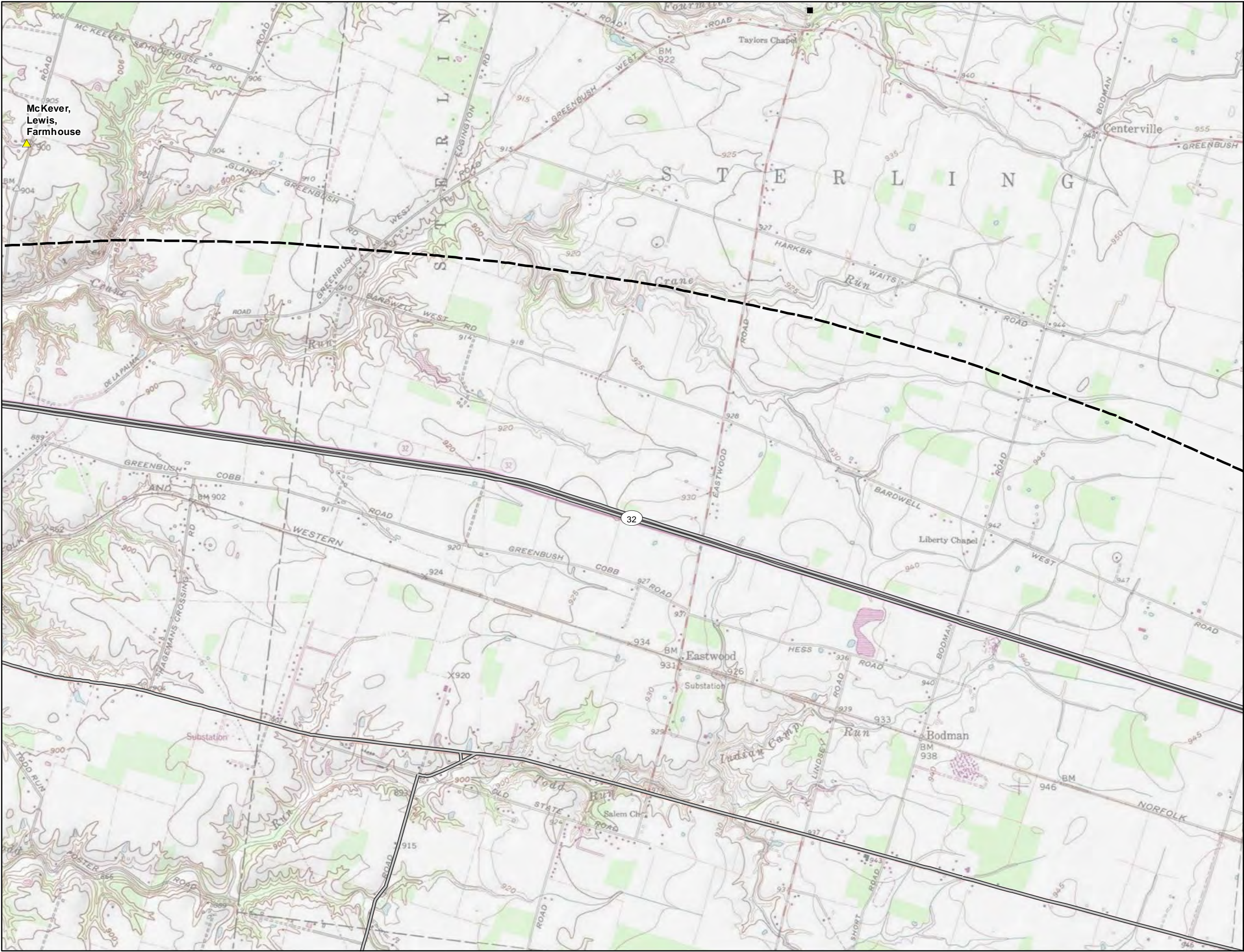


1:24,000  
Source: ESRI (2016), NRHP (2018), ODNR (2018),  
ODOT (2018), USGS (1985)

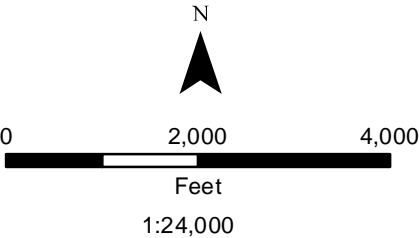




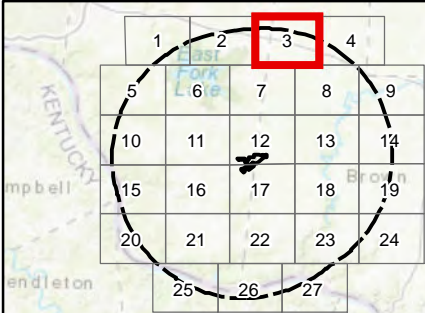
**Figure 08-13**  
**Cultural and Recreational**  
**Resources within Ten Miles**  
Sheet 3 of 27  
Nestlewood Solar  
Brown and Clermont Counties, Ohio



- Project Area
- 10-mile Buffer
- Cemetery
- NRHP Structure
- Highway
- Scenic Byway
- Trail Type
  - Equestrian
  - Hiking
  - Mountain Bike
  - Shared Use
- Park
- NRHP Historic District



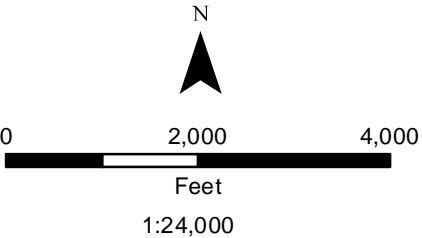
Source: ESRI (2016), NRHP (2018), ODNR (2018), ODOT (2018), USGS (1985)



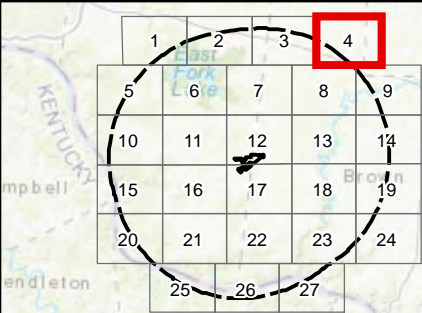


**Figure 08-13**  
**Cultural and Recreational**  
**Resources within Ten Miles**  
Sheet 4 of 27  
Nestlewood Solar  
Brown and Clermont Counties, Ohio

- Project Area
- 10-mile Buffer
- Cemetery
- NRHP Structure
- Highway
- Scenic Byway
- Trail Type
  - Equestrian
  - Hiking
  - Mountain Bike
  - Shared Use
- Park
- NRHP Historic District



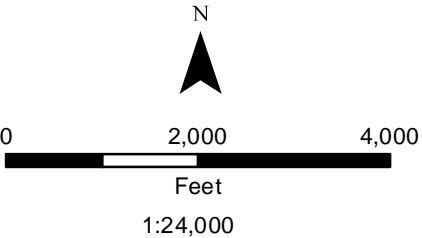
Source: ESRI (2016), NRHP (2018), ODNR (2018),  
ODOT (2018), USGS (1985)



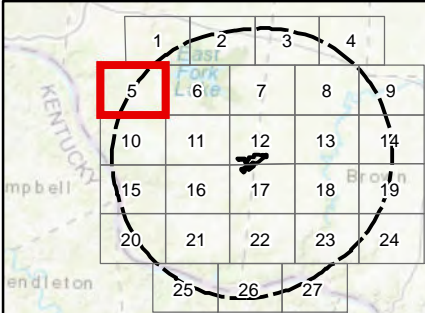


**Figure 08-13**  
**Cultural and Recreational**  
**Resources within Ten Miles**  
Sheet 5 of 27  
Nestlewood Solar  
Brown and Clermont Counties, Ohio

- Project Area
- 10-mile Buffer
- Cemetery
- NRHP Structure
- Highway
- Scenic Byway
- Trail Type
  - Equestrian
  - Hiking
  - Mountain Bike
  - Shared Use
- Park
- NRHP Historic District















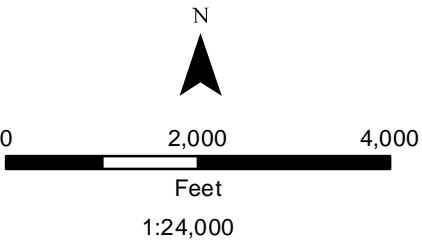
Source: ESRI (2016), NRHP (2018), ODNR (2018),  
ODOT (2018), USGS (1985)



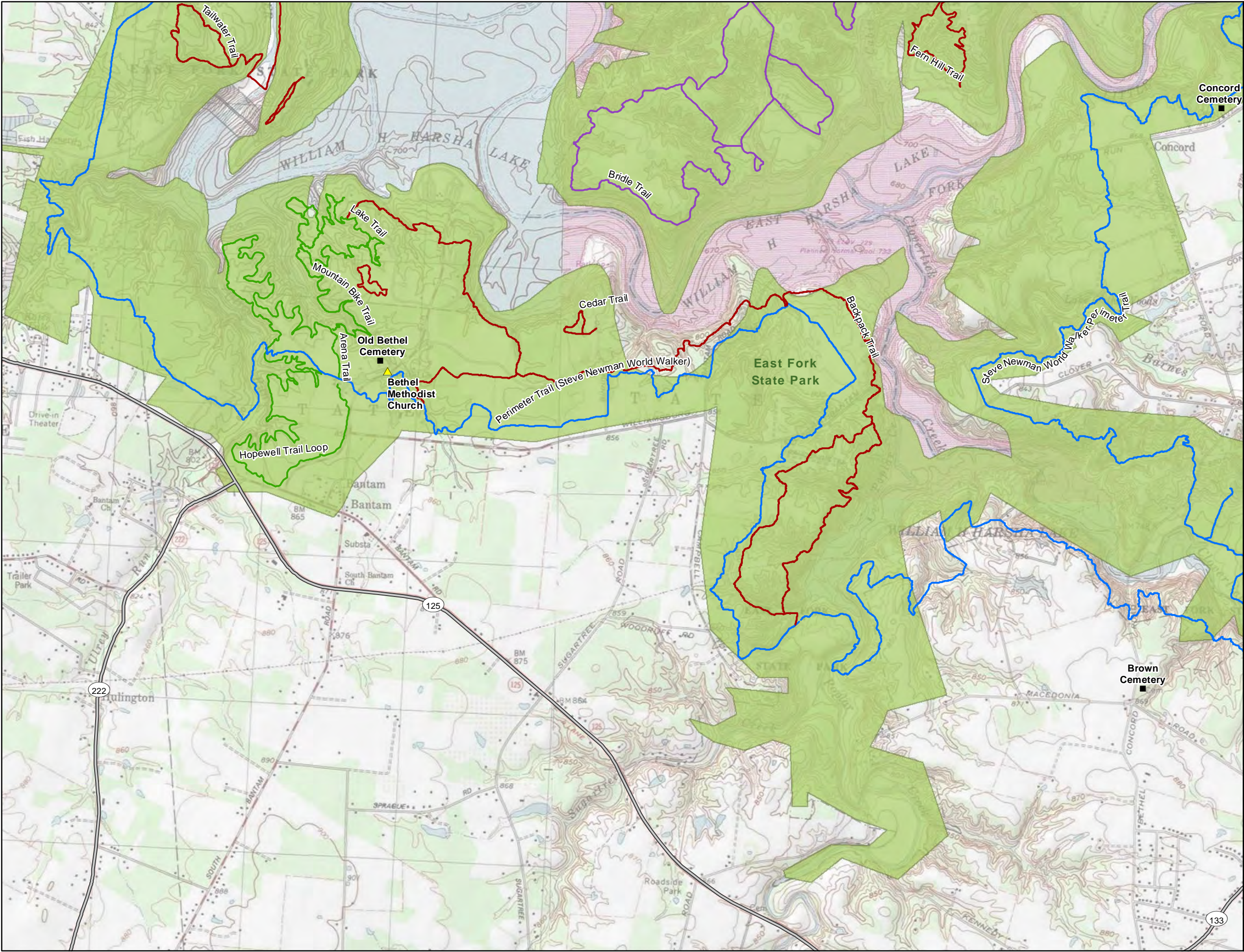
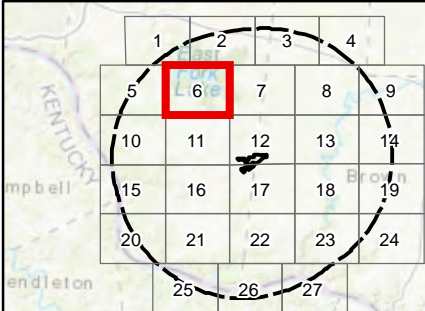


**Figure 08-13**  
**Cultural and Recreational**  
**Resources within Ten Miles**  
Sheet 6 of 27  
Nestlewood Solar  
Brown and Clermont Counties, Ohio

-  Project Area  
 10-mile Buffer  
 Cemetery  
 NRHP Structure  
 Highway  
 Scenic Byway  
**Trail Type**  
 Equestrian  
 Hiking  
 Mountain Bike  
 Shared Use  
 Park  
 NRHP Historic District















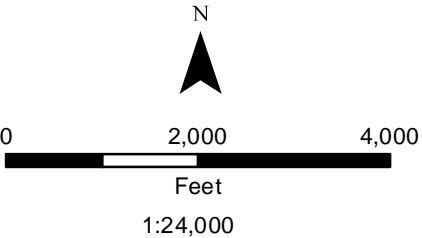
Source: ESRI (2016), NRHP (2018), ODNR (2018),  
ODOT (2018), USGS (1985)



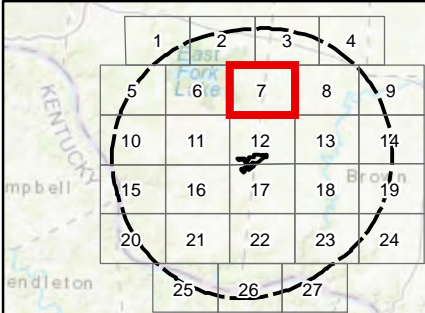


**Figure 08-13**  
**Cultural and Recreational**  
**Resources within Ten Miles**  
Sheet 7 of 27  
Nestlewood Solar  
Brown and Clermont Counties, Ohio

-  Project Area
-  10-mile Buffer
-  Cemetery
-  NRHP Structure
-  Highway
-  Scenic Byway
- Trail Type
  -  Equestrian
  -  Hiking
  -  Mountain Bike
  -  Shared Use
-  Park
-  NRHP Historic District



Source: ESRI (2016), NRHP (2018), ODNR (2018),  
ODOT (2018), USGS (1985)





**This foregoing document was electronically filed with the Public Utilities**

**Commission of Ohio Docketing Information System on**

**12/14/2018 11:21:29 AM**

**in**

**Case No(s). 18-1546-EL-BGN**

Summary: Application Figures (Part 2 of 3) electronically filed by Mr. Michael J. Settineri on behalf of Nestlewood Solar I LLC