

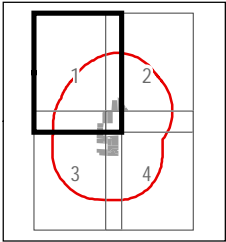
Angelina Solar Farm

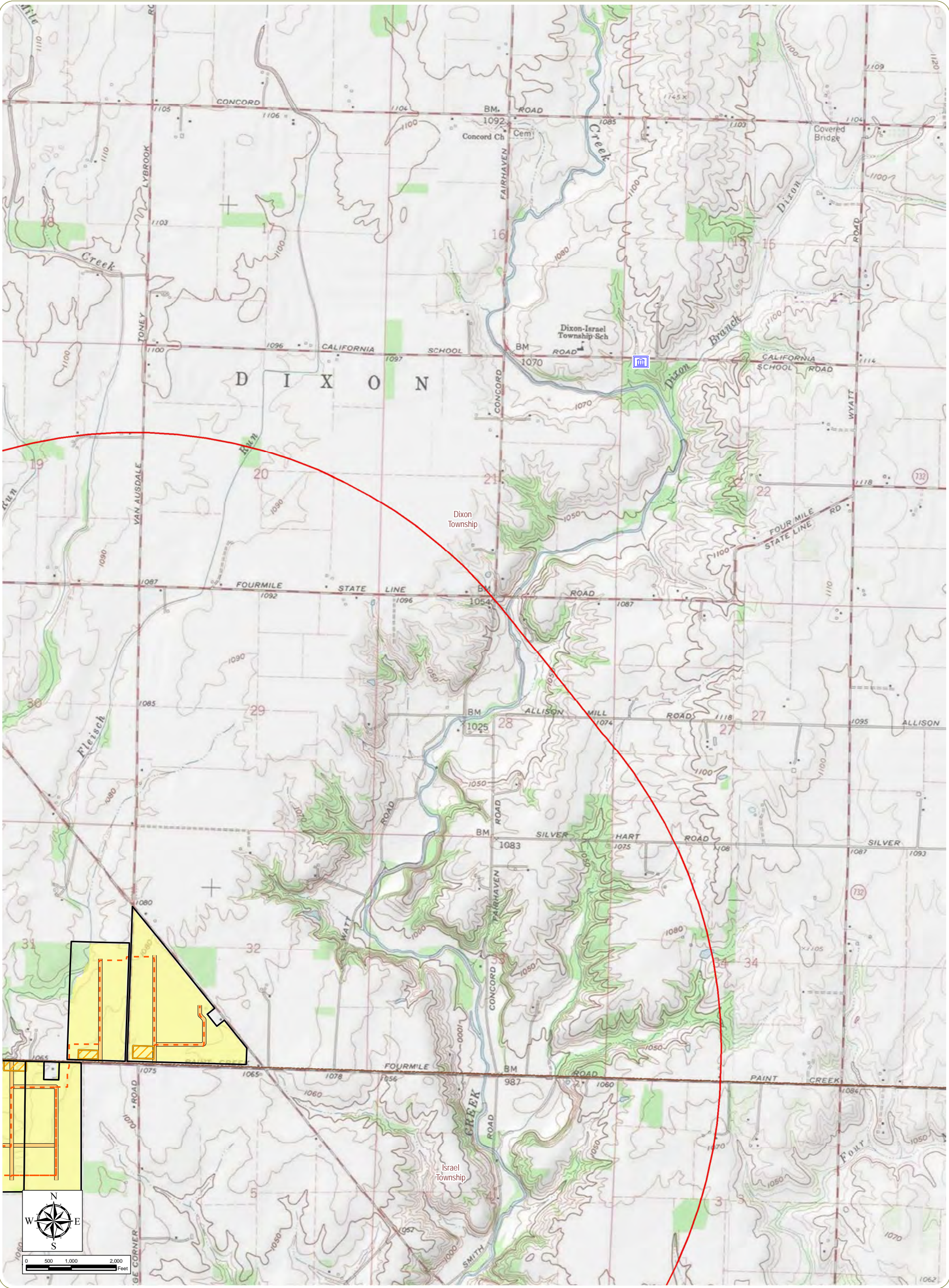
Dixon and Israel Townships, Preble County, Ohio

Figure 1: Map of Project Area Geography and Topography-
Sheet 1 of 4

Notes: 1. Basemap: ESRI ArcGIS Online "USA Topo Maps" map service. 2. Project and existing transmission line shapefiles provided by ORR; all other files downloaded from publicly available sources. 3. This map was generated in ArcMap on November 26, 2018. 4. This is a color graphic. Reproduction in grayscale may misrepresent the data. 5. Map scale 1:24,000.

- ▲ Pyranometer
- ✙ Cemetery
- ✈ Heliport
- - - Collection Line
- - - Existing Transmission Line
- Access Road
- ▨ Laydown Yard
- ▨ Potential Solar Array
- ▭ Project Area
- ▭ 2-Mile Study Area
- ▭ Township Boundary
- ▭ County Boundary





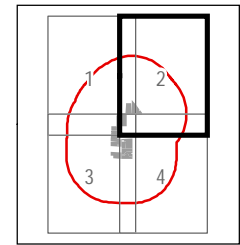
Angelina Solar Farm

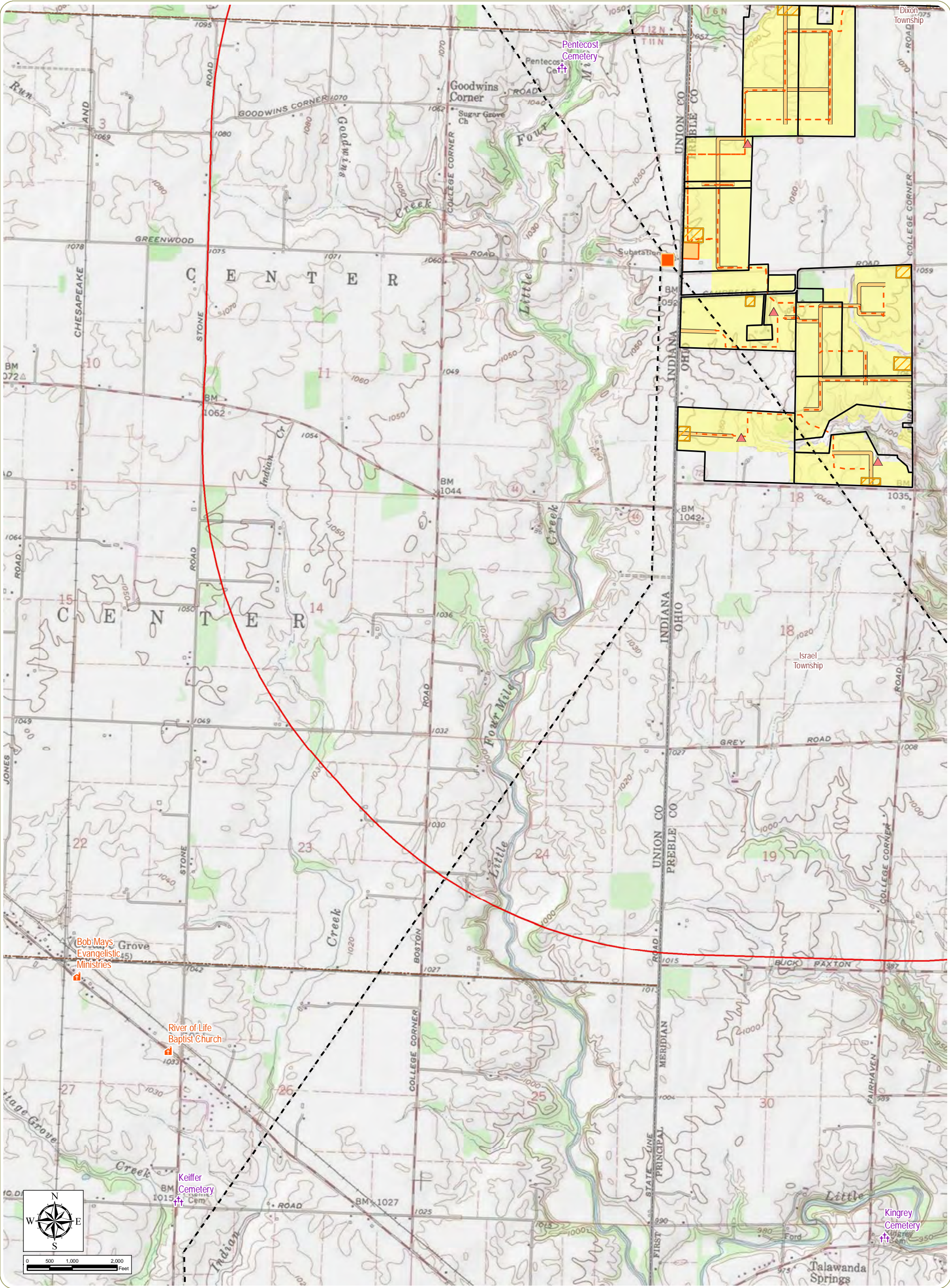
Dixon and Israel Townships, Preble County, Ohio

Figure 1: Map of Project Area Geography and Topography-
Sheet 2 of 4

Notes: 1. Basemap: ESRI ArcGIS Online "USA Topo Maps" map service. 2. Project and existing transmission line shapefiles provided by ORR; all other files downloaded from publicly available sources. 3. This map was generated in ArcMap on November 26, 2018. 4. This is a color graphic. Reproduction in grayscale may misrepresent the data. 5. Map scale 1:24,000.

- Government Office
- Heliport
- Collection Line
- Access Road
- Laydown Yard
- Potential Solar Array
- Project Area
- 2-Mile Study Area
- Township Boundary
- County Boundary



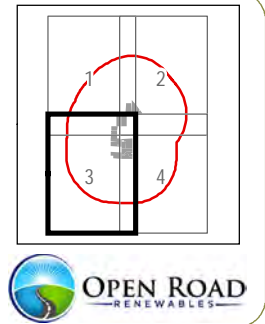


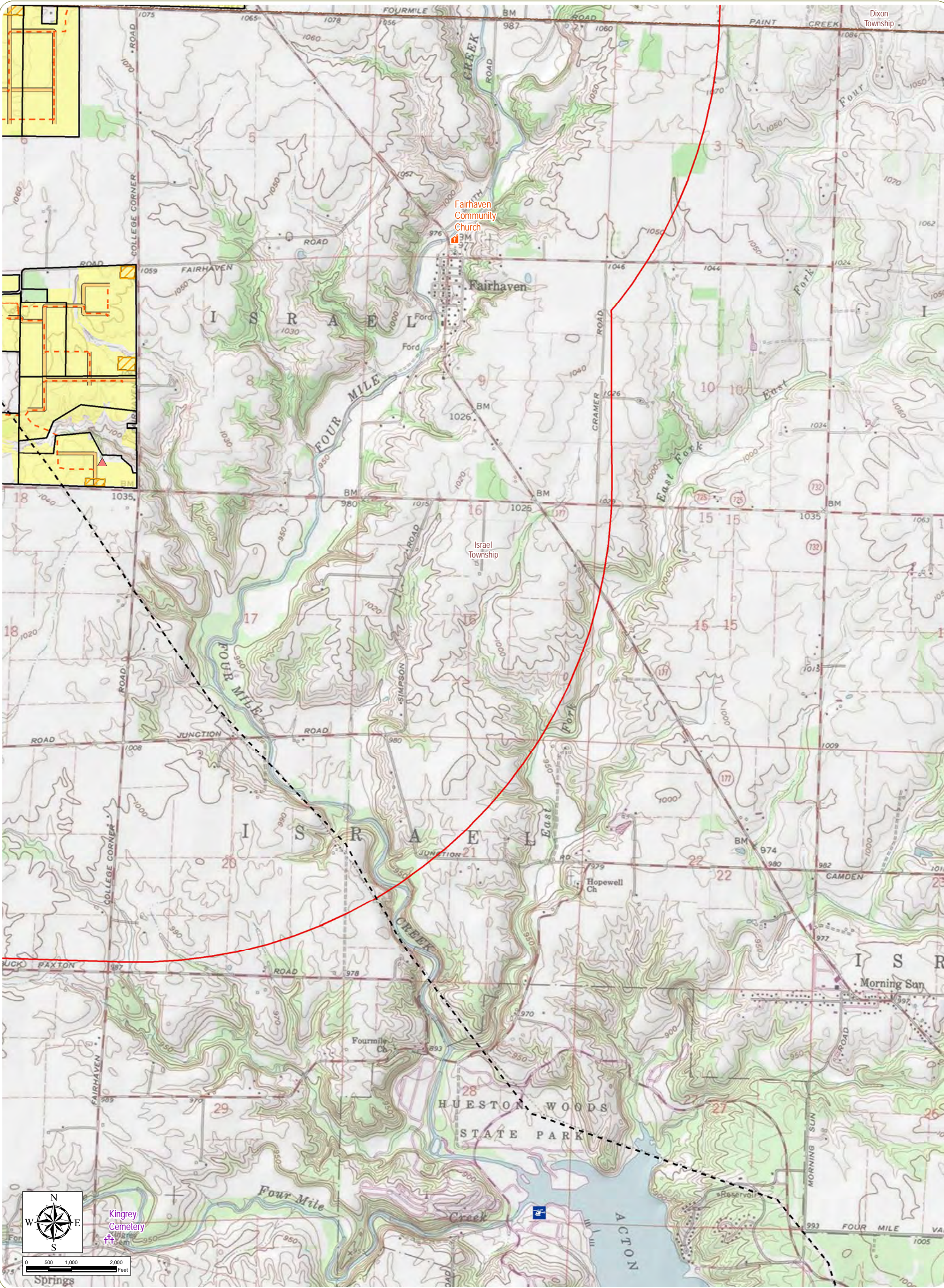
Angelina Solar Farm
Dixon and Israel Townships, Preble County, Ohio

Figure 1: Map of Project Area Geography and Topography-
Sheet 3 of 4

Notes: 1. Basemap: ESRI ArcGIS Online "USA Topo Maps" map service. 2. Project and existing transmission line shapefiles provided by ORR; all other files downloaded from publicly available sources. 3. This map was generated in ArcMap on November 26, 2018. 4. This is a color graphic. Reproduction in grayscale may misrepresent the data. 5. Map scale 1:24,000.

- Pyranometer
- POI Substation
- Cemetery
- Place of Worship
- Heliport
- Collection Line
- Existing Transmission Line
- Access Road
- Laydown Yard
- Collection Substation
- Potential Solar Array
- Project Area
- 2-Mile Study Area
- Township Boundary
- County Boundary





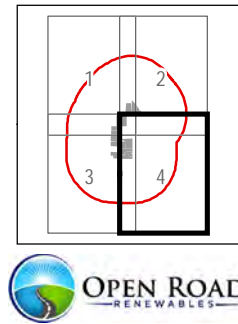
Angelina Solar Farm

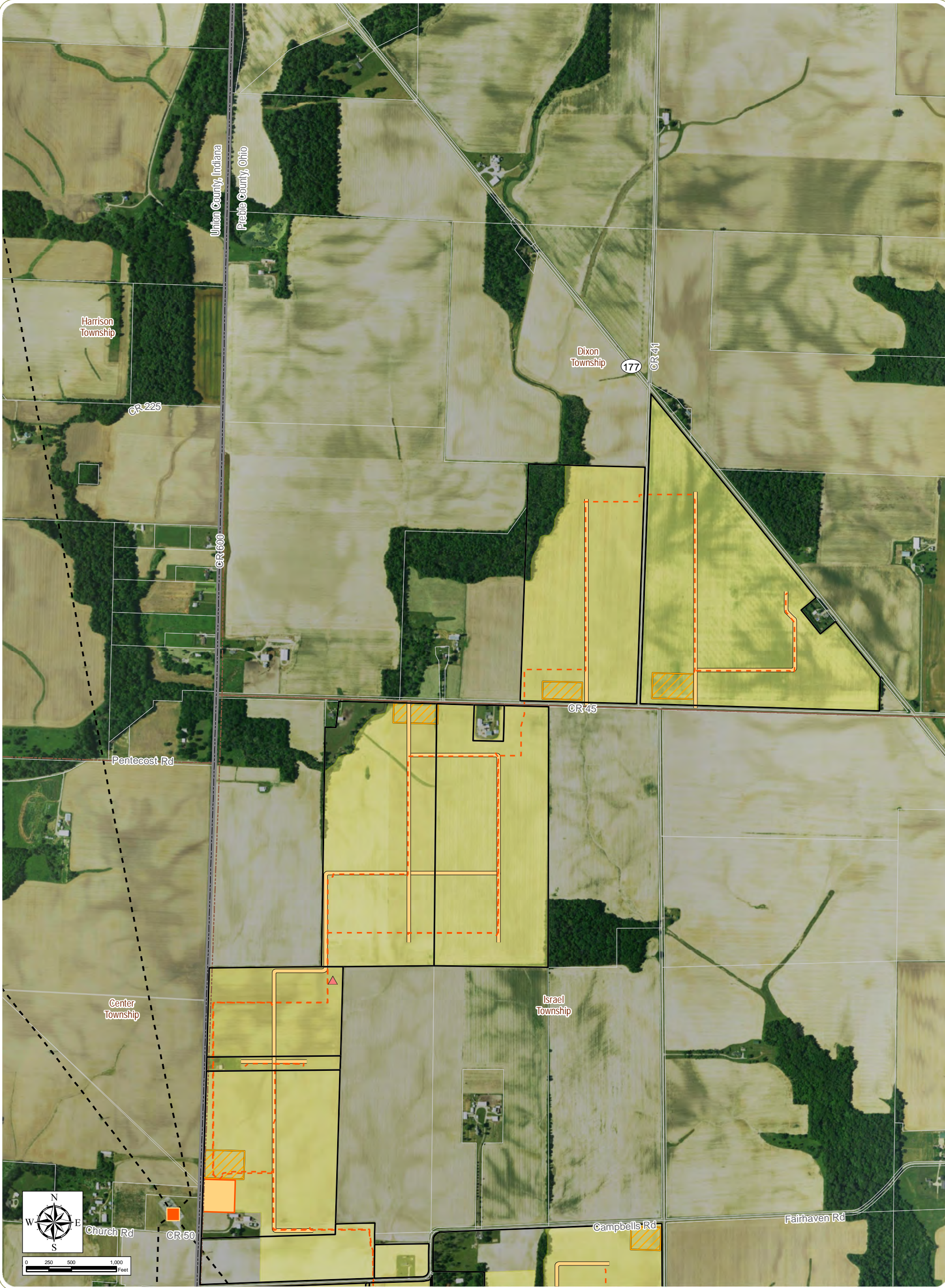
Dixon and Israel Townships, Preble County, Ohio

Figure 1: Map of Project Area Geography and Topography-
Sheet 4 of 4

Notes: 1. Basemap: ESRI ArcGIS Online "USA Topo Maps" map service. 2. Project and existing transmission line shapefiles provided by ORR; all other files downloaded from publicly available sources. 3. This map was generated in ArcMap on November 26, 2018. 4. This is a color graphic. Reproduction in grayscale may misrepresent the data. 5. Map scale 1:24,000.

- ▲ Pyranometer
- ✙ Cemetery
- 🏠 Place of Worship
- ✈ Heliport
- - - Collection Line
- - - Existing Transmission Line
- Access Road
- 🟡 Laydown Yard
- 🟡 Potential Solar Array
- ▭ Project Area
- 🔴 2-Mile Study Area
- ▭ Township Boundary
- ▭ County Boundary





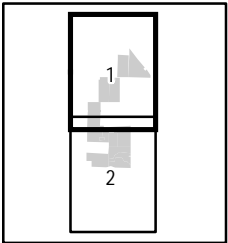
Angelina Solar Farm

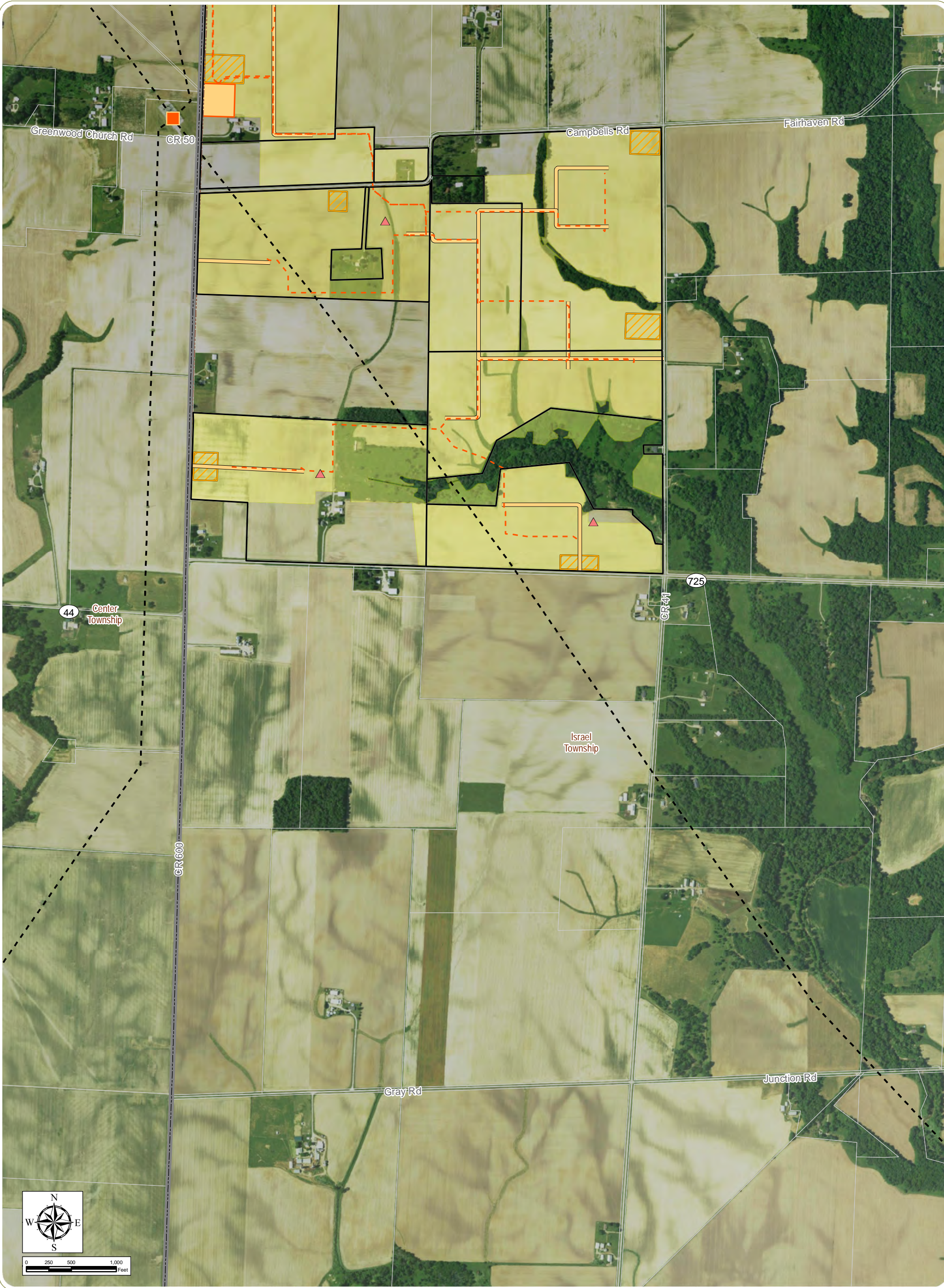
Dixon and Israel Townships, Preble County, Ohio

Figure 2: Map of Aerial View of Project Area - Sheet 1 of 2

Notes: 1. Basemap: USDA NAIP 2018 orthoimagery map service. 2. Project and existing transmission line shapefiles provided by ORR; all other files downloaded from publicly available sources. 3. This map was generated in ArcMap on November 19, 2018. 4. This is a color graphic. Reproduction in grayscale may misrepresent the data. 5. Map scale 1:12,000.

- | | |
|----------------------------|-----------------------|
| Pyranometer | Laydown Yard |
| POI Substation | Potential Solar Array |
| Existing Transmission Line | Project Area |
| Collection Line | Parcel Boundary |
| Access Road | Township Boundary |
| Collection Substation | County Boundary |
| | State Boundary |





Angelina Solar Farm

Dixon and Israel Townships, Preble County, Ohio

Figure 2: Map of Aerial View of Project Area - Sheet 2 of 2

Notes: 1. Basemap: USDA NAIP 2018 orthoimagery map service. 2. Project and existing transmission line shapefiles provided by ORR; all other files downloaded from publicly available sources. 3. This map was generated in ArcMap on November 19, 2018. 4. This is a color graphic. Reproduction in grayscale may misrepresent the data. 5. Map scale 1:12,000.

- | | | | |
|--|----------------------------|--|-----------------------|
| | Pyranometer | | Laydown Yard |
| | POI Substation | | Potential Solar Array |
| | Existing Transmission Line | | Project Area |
| | Collection Line | | Parcel Boundary |
| | Access Road | | Township Boundary |
| | Collection Substation | | County Boundary |
| | | | State Boundary |

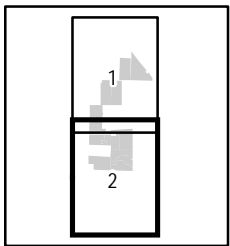
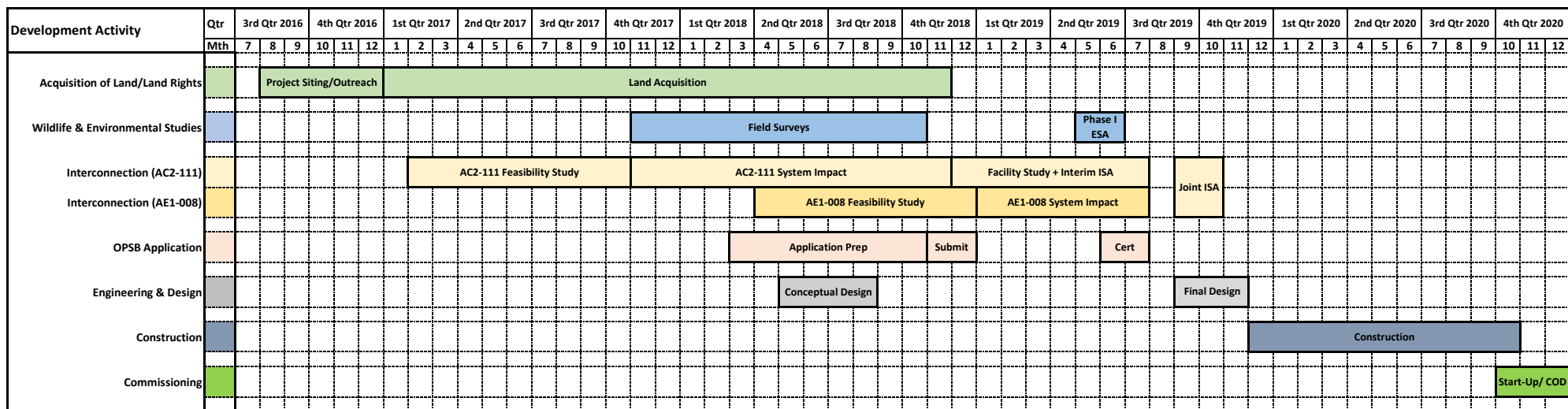


Figure 3 Project Schedule





Angelina Solar Farm

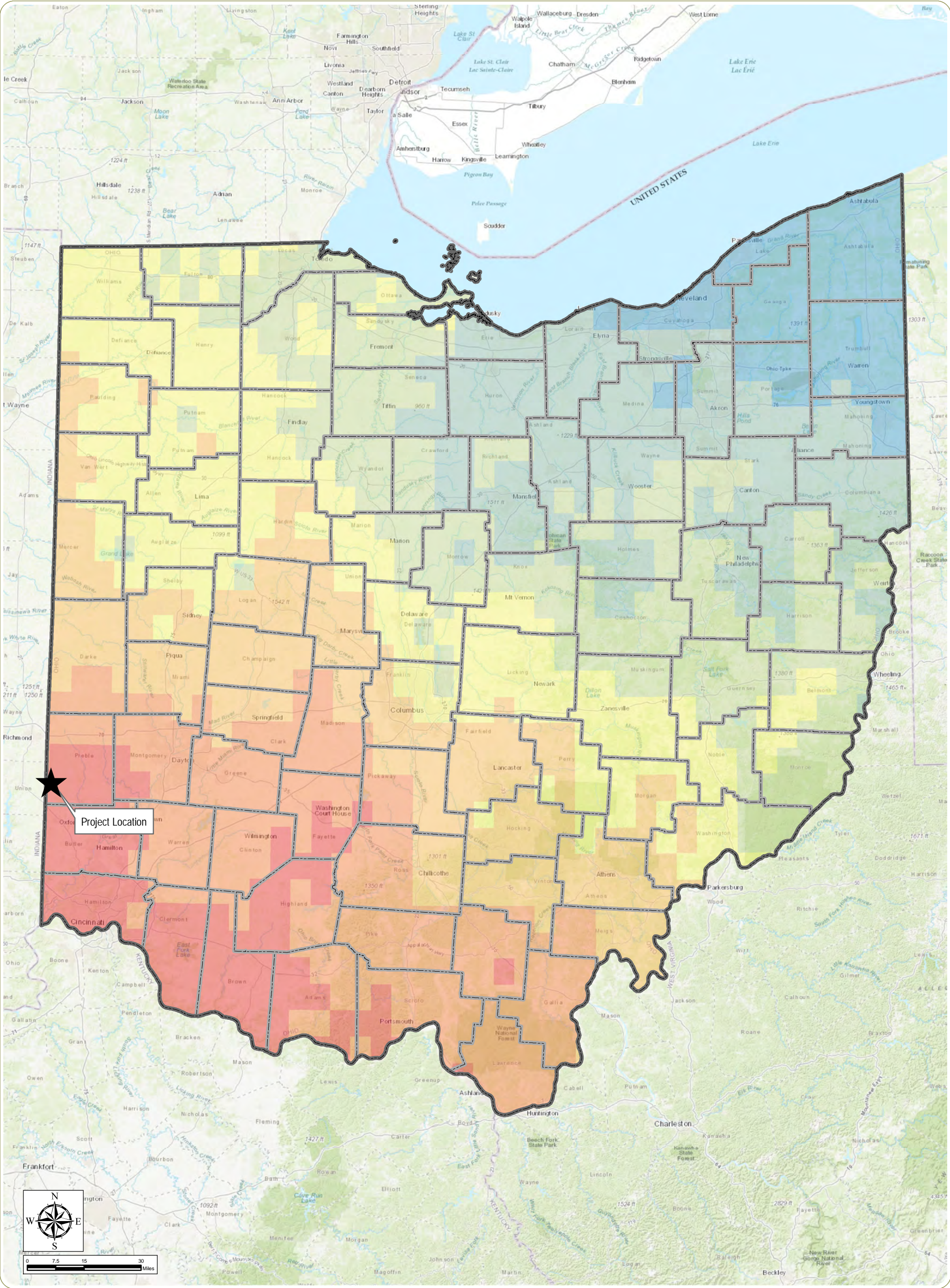
Dixon and Israel Townships, Preble County, Ohio

Figure 4: Map of Location of Project Area

Notes: 1. Basemap:ESRI ArcGIS Online "World Topographic Map" map service. 2. This map was generated in ArcMap on November 20, 2018. 3. This is a color graphic. Reproduction in grayscale may misrepresent the data. 4. Map Scale 1:1,500,000

- County Boundary
- Ohio State Boundary



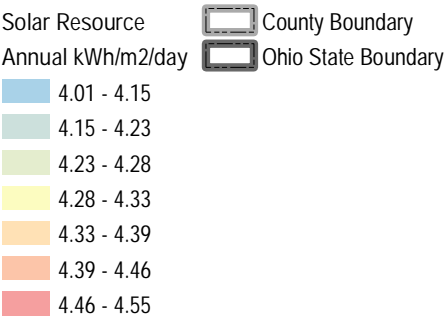


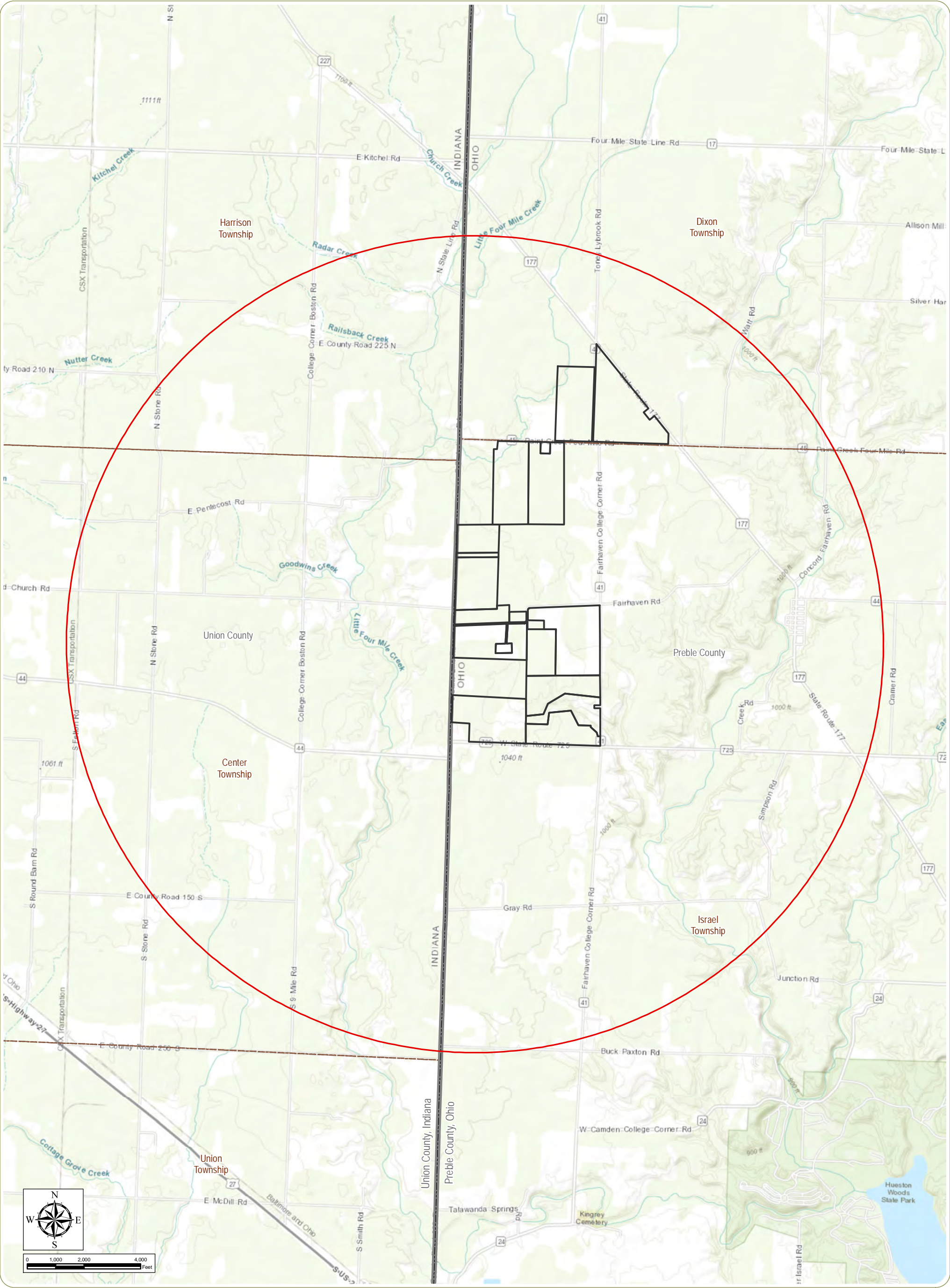
Angelina Solar Farm

Dixon and Israel Townships, Preble County, Ohio

Figure 5. Map of Ohio Solar Resource

Notes: 1. Basemap: ESRI ArcGIS Online "World Topographic Map" map service. 2. This map was generated in ArcMap on November 19, 2018. 3. This is a color graphic. Reproduction in grayscale may misrepresent the data. 4. Map Scale 1:1,500,000.





Angelina Solar Farm

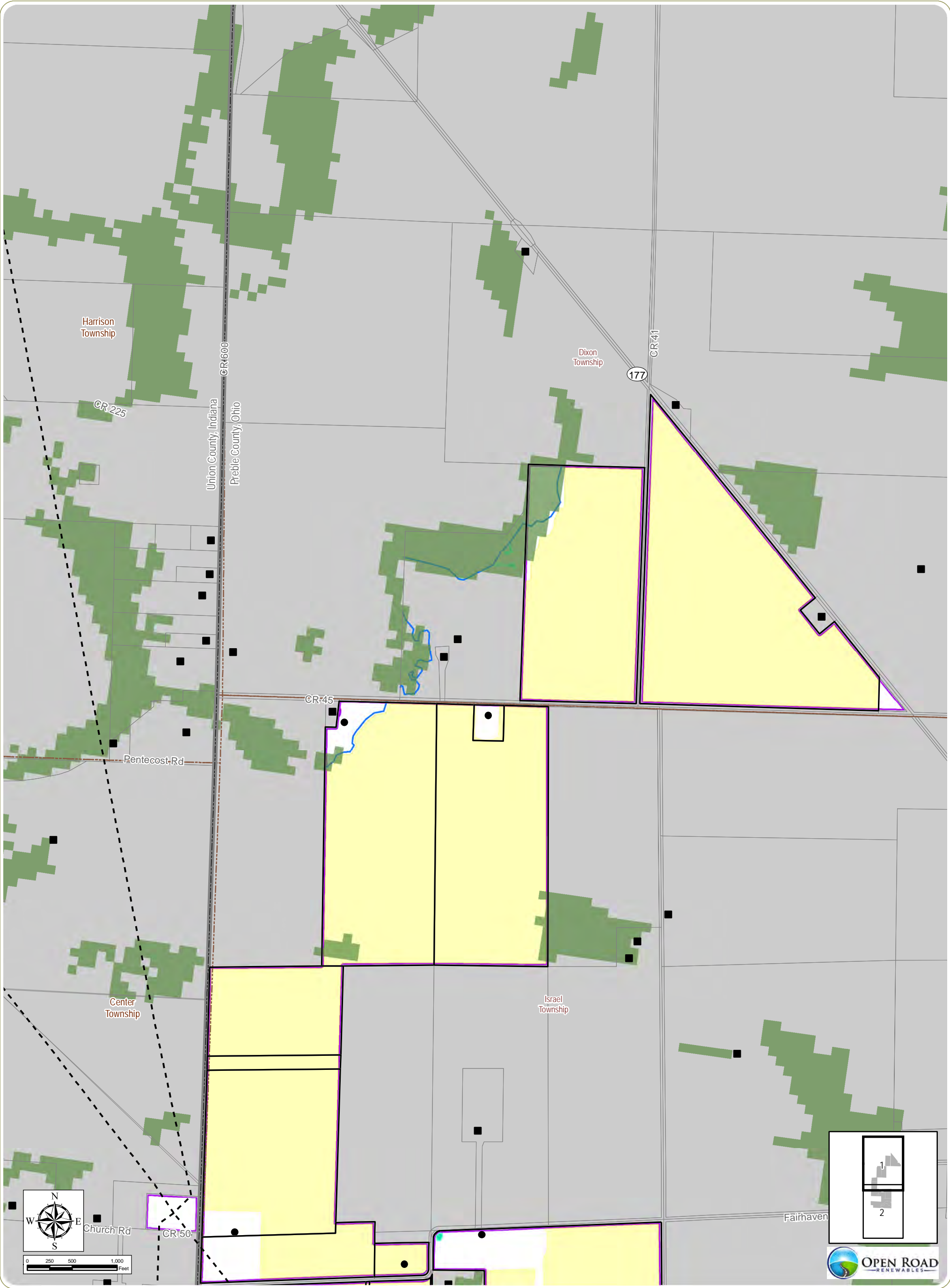
Dixon and Israel Townships, Preble County, Ohio

Figure 6. Map of Study Area

Notes: 1. Basemap: ESRI ArcGIS Online "World Topographic Map" map service. 2. This map was generated in ArcMap on November 19, 2018. 3. This is a color graphic. Reproduction in grayscale may misrepresent the data. 4. Map Scale 1:38,000.

- Study Area Evaluated in 2017
- Project Area
- Township Boundary
- County Boundary
- State Boundary

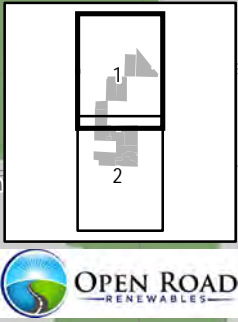


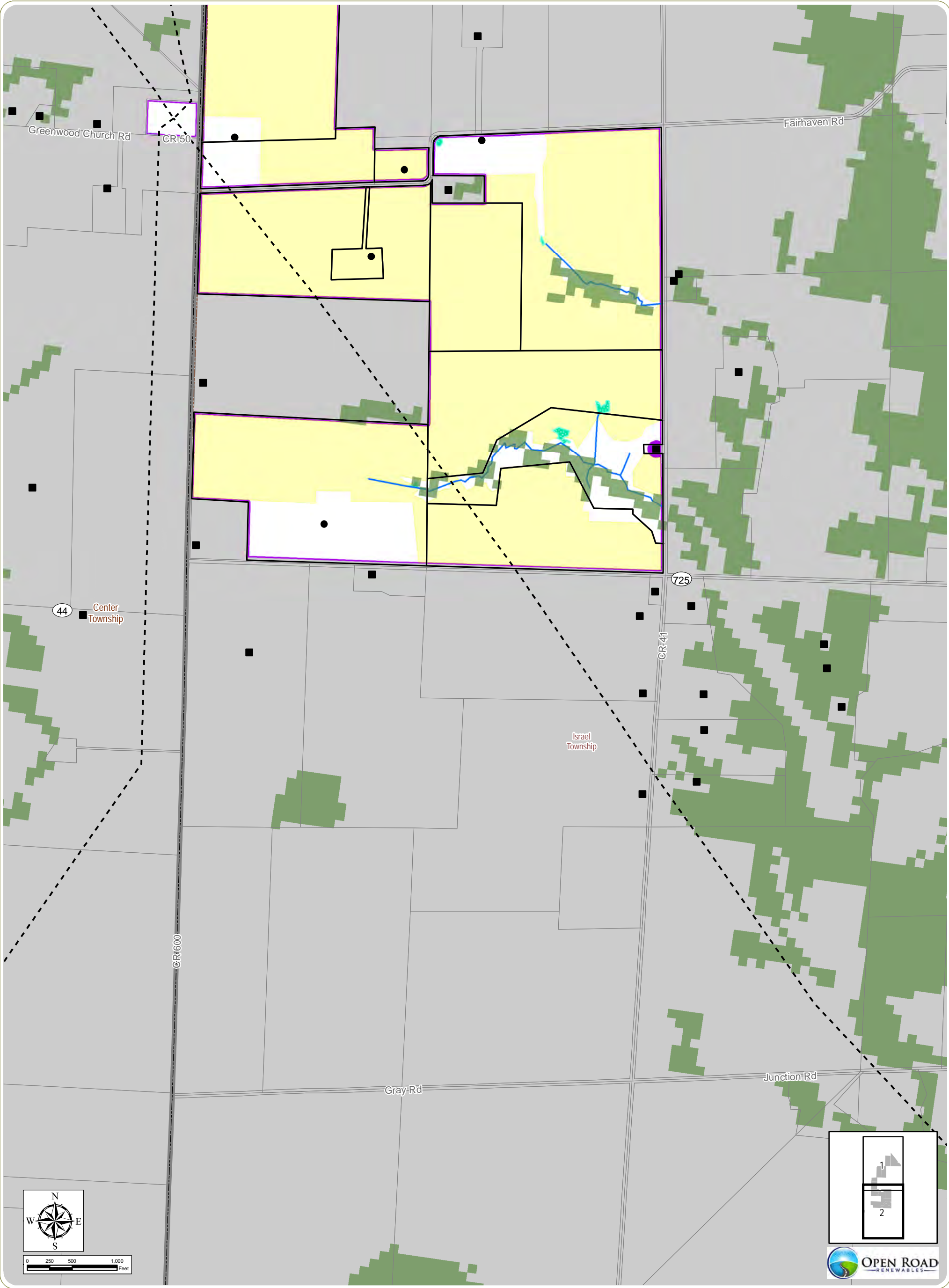


Angelina Solar Farm
Dixon and Israel Townships, Preble County, Ohio
Figure 7: Map of Constraints- Sheet 1 of 2

Notes: 1. Basemap: ESRI StreetMap North America, 2008. 2. This map was generated in ArcMap on November 26, 2018. 3. Facility components, receptors, and existing transmission line provided by ORR; Delineated features provided by Cardno. 4. Solar Array setbacks include non-participating parcels, areas within 25 feet of non-participating parcel boundaries, within 40 feet of the edge of pavement of public roads, and within 100 feet of non-participating receptors. Perimeter fence setbacks include non-participating parcels, areas within 10 feet of non-participating parcel boundaries and within 25 feet of the edge of pavement of public roads. 5. The Project will comply with defined utility line easements, 6. This is a color graphic. Reproduction in grayscale may misrepresent the data. 7. Map Scale 1:12,000.

- | | |
|----------------------------------|----------------------|
| ● Participating Receptor | ▨ Delineated Wetland |
| ■ Non-Participating Receptor | ■ Woodlot |
| — Delineated Waterbody | ▭ Project Area |
| - - - Existing Transmission Line | ▭ Parcel Boundary |
| ■ Potential Solar Array | ▭ Township Boundary |
| ■ Fenceline Setback | ▭ County Boundary |
| ■ Solar Array Setback | ▭ State Boundary |

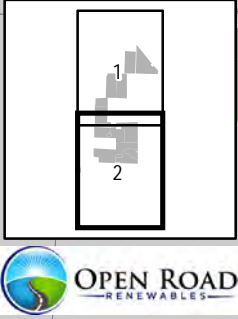


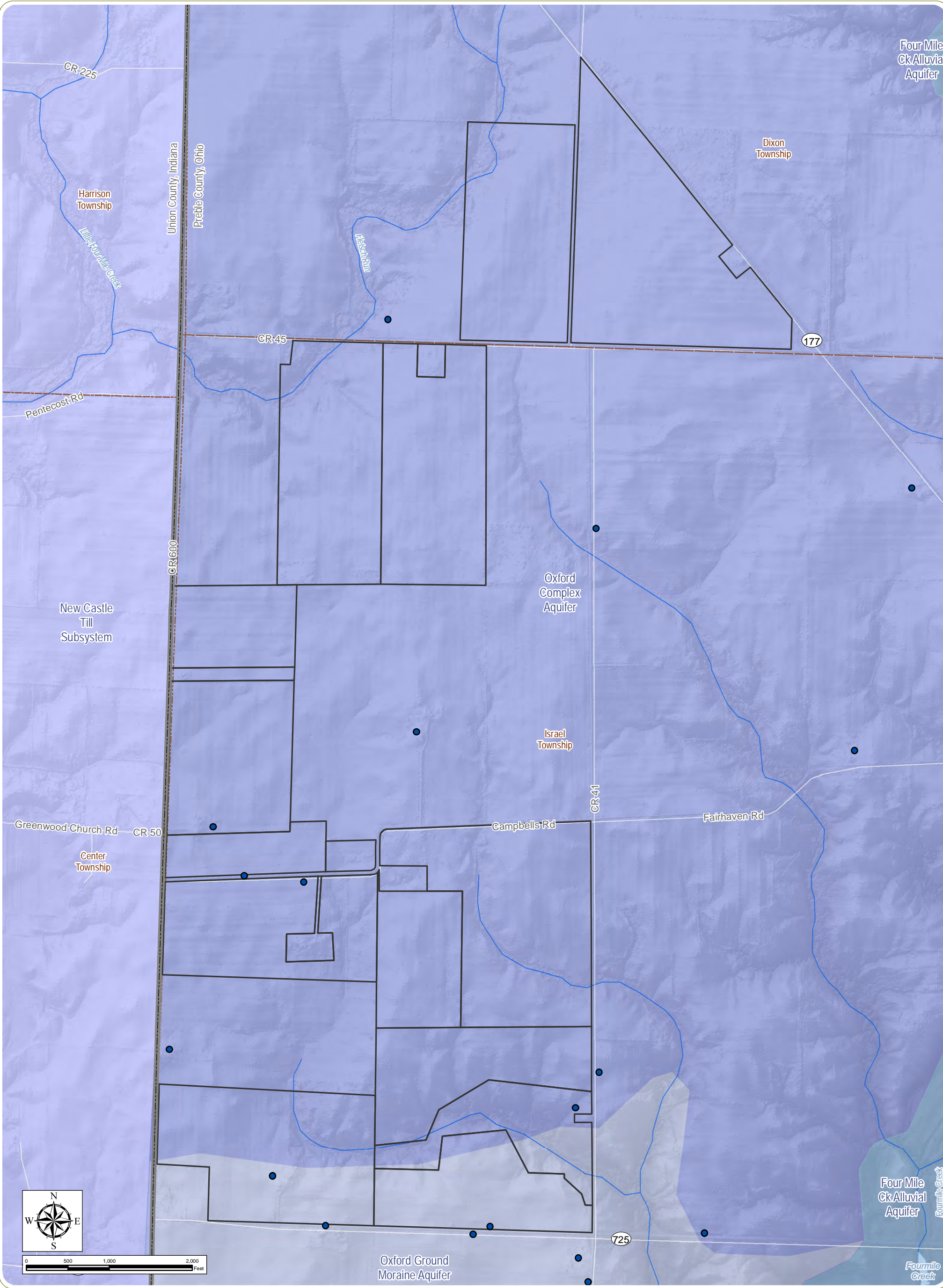


Angelina Solar Farm
Dixon and Israel Townships, Preble County, Ohio
Figure 7: Map of Constraints- Sheet 2 of 2

Notes: 1. Basemap: ESRI StreetMap North America, 2008. 2. This map was generated in ArcMap on November 26, 2018. 3. Facility components, receptors, and existing transmission line provided by ORR; Delineated features provided by Cardno. 4. Solar Array setbacks include non-participating parcels, areas within 25 feet of non-participating parcel boundaries, within 40 feet of the edge of pavement of public roads, and within 100 feet of non-participating receptors. Perimeter fence setbacks include non-participating parcels, areas within 10 feet of non-participating parcel boundaries and within 25 feet of the edge of pavement of public roads. 5. The Project will comply with defined utility line easements, 6. This is a color graphic. Reproduction in grayscale may misrepresent the data. 7. Map Scale 1:12,000.

- | | |
|----------------------------------|----------------------|
| ● Participating Receptor | ■ Delineated Wetland |
| ■ Non-Participating Receptor | ■ Woodlot |
| — Delineated Waterbody | □ Project Area |
| - - - Existing Transmission Line | □ Parcel Boundary |
| ■ Potential Solar Array | □ Township Boundary |
| ■ Fenceline Setback | □ County Boundary |
| ■ Solar Array Setback | □ State Boundary |





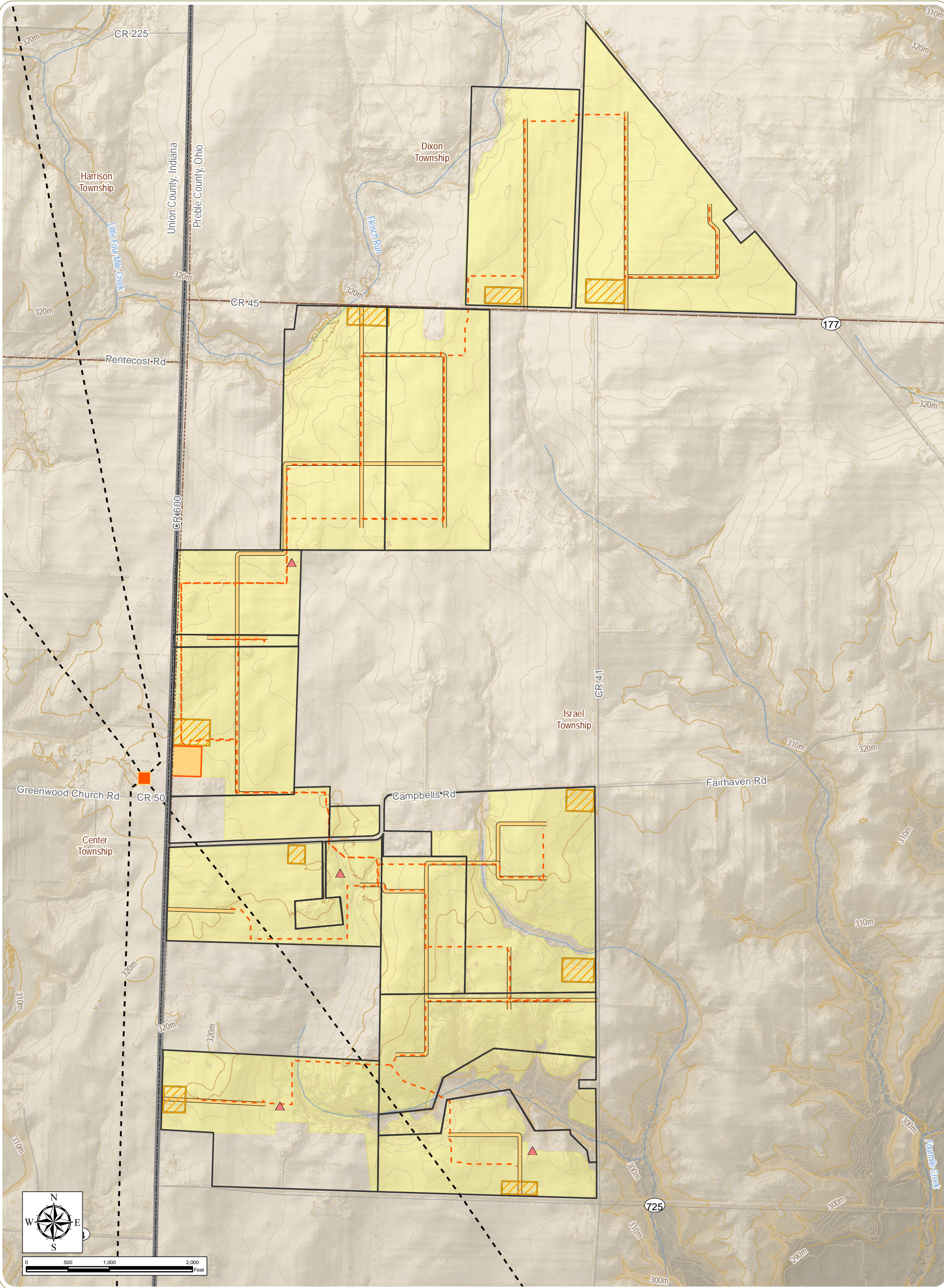
Angelina Solar Farm
Dixon and Israel Townships, Preble County, Ohio

Figure 8. Map of Drinking Water Resources

Notes: 1. Basemap: ESRI StreetMap North America, 2008 and hillshade generated from OGRIP digital elevation model data. 2. This map was generated in ArcMap on November 17, 2018. 3. This is a color graphic. Reproduction in grayscale may misrepresent the data. 4. Map Scale 1:13,000.

- | | |
|-------------------------|-------------------------------------|
| ● Water Well | Aquifer |
| — River/Stream | ■ New Castle Till Subsystem Aquifer |
| ▭ Project Area | ■ Four Mile Ck Alluvial Aquifer |
| - - - Township Boundary | ■ Oxford Complex Aquifer |
| ▭ County Boundary | ■ Oxford Ground Moraine Aquifer |
| ▭ State Boundary | |





Angelina Solar Farm

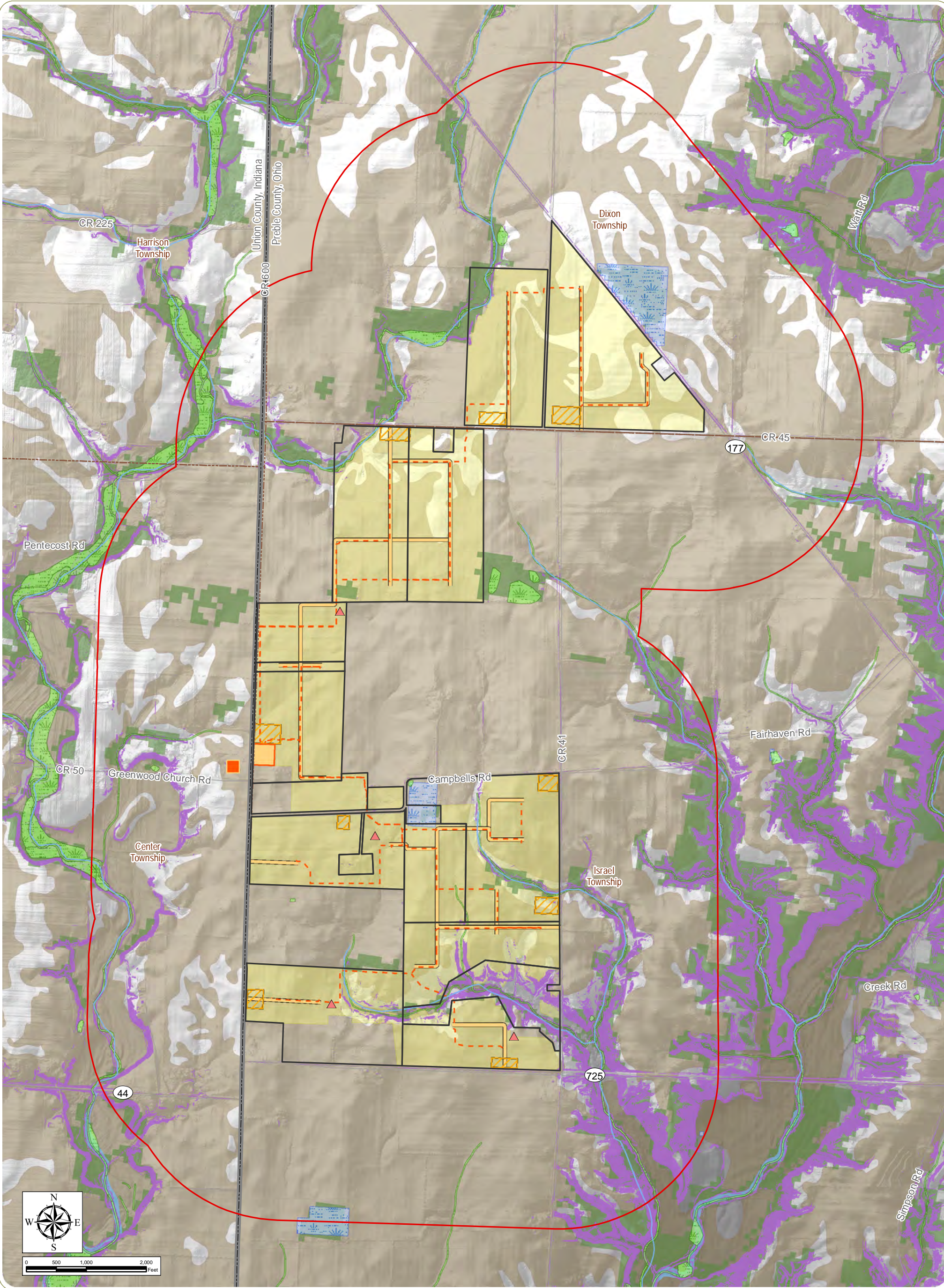
Dixon and Israel Townships, Preble County, Ohio

Figure 9. Map of Existing Geological Features

Notes: 1. Basemap: Hillshade and topographic contours generated from OGRIP digital elevation model data. 2. This map was generated in ArcMap on November 17, 2018. 3. This is a color graphic. Reproduction in grayscale may misrepresent the data. 4. Map Scale 1:13,000.

- | | | |
|------------------------------|------------------------------|-------------------|
| Pyranometer | Access Road | Project Area |
| POI Substation | Collection Substation | Township Boundary |
| 1-Meter Topographic Contour | Laydown Yard | County Boundary |
| 10-Meter Topographic Contour | Potential Solar Array | State Boundary |
| Existing Transmission Line | Bedrock Formation | |
| Collection Line | Ordovician, limestone, shale | |





Angelina Solar Farm
Dixon and Israel Townships, Preble County, Ohio

Figure 10. Map of Ecological Resources

Notes: 1. Basemap: Hillshade generated from OGRIP digital elevation model data. 2. Project components provided by ORR; slopes over 12% calculated by EDR; highly erodible soils discerned from USDA's WebSoil Survey; wetlands obtained from ODNR; undeveloped land obtained from NLCD 2011. 3. This map was generated in ArcMap on November 17, 2018. 4. This is a color graphic. Reproduction in grayscale may misrepresent the data. 5. Map Scale 1:18,000.

- | | | |
|-------------------------|------------------------|-------------------------|
| ▲ Pyranometer | ■ NWI-Mapped Wetland | ▭ Project Area |
| ■ POI Substation | ■ OHI Wetland | ▭ Half-Mile Study Area |
| - - - Collection Line | ■ Steep Slope (>12%) | - - - Township Boundary |
| — Access Road | ■ Highly Erodible Soil | ▭ County Boundary |
| ■ Collection Substation | ■ Undeveloped Land | ▭ State Boundary |
| ▨ Laydown Yard | ■ Open Water | |
| ■ Potential Solar Array | ■ Woodlot | |



This foregoing document was electronically filed with the Public Utilities

Commission of Ohio Docketing Information System on

12/3/2018 2:03:59 PM

in

Case No(s). 18-1579-EL-BGN

Summary: Application Figures, Part 1 of 2 electronically filed by Mr. Michael J. Settineri on behalf of Angelina Solar I, LLC