

**APPENDIX D**

**REPRESENTATIVE STREAMS, WETLANDS, AND PONDS  
PHOTOGRAPHS**



## PHOTOGRAPHIC RECORD

### Stream Photographs

**Client Name:**

American Transmission Systems, Inc.

**Site Location:**

Beaver-Brownhelm Junction and Black River 138 kV  
Transmission Line Rebuild Project

**Project No.**

60563907 and  
60568495

**Photo No. 1****Date/Location:**

July 9, 2018

**Description:**

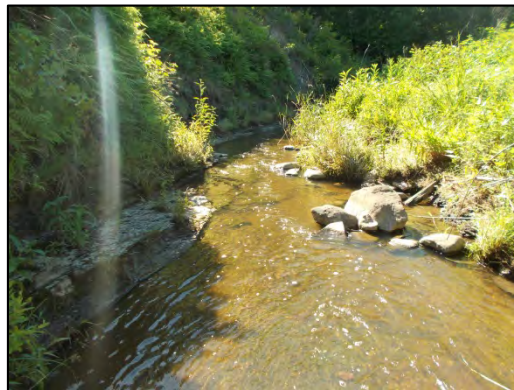
Stream BBR-1  
Quarry Creek

Perennial

Warmwater



Facing Upstream



Facing Downstream



Substrate



## PHOTOGRAPHIC RECORD

### Stream Photographs

**Client Name:**

American Transmission Systems, Inc.

**Site Location:**

Beaver-Brownhelm Junction and Black River 138 kV  
Transmission Line Rebuild Project

**Project No.**

60563907 and  
60568495

**Photo No. 2****Date/Location:**

July 10, 2018

**Description:**

Stream BBR-2

Ephemeral

Modified Class 1



Facing Upstream



Facing Downstream



Substrate





## PHOTOGRAPHIC RECORD

### Stream Photographs

**Client Name:**

American Transmission Systems, Inc.

**Site Location:**

Beaver-Brownhelm Junction and Black River 138 kV  
Transmission Line Rebuild Project

**Project No.**

60563907 and  
60568495

**Photo No. 3****Date/Location:**

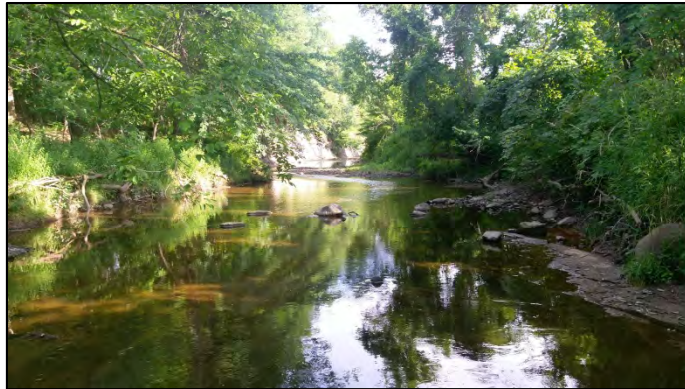
July 12, 2018

**Description:**

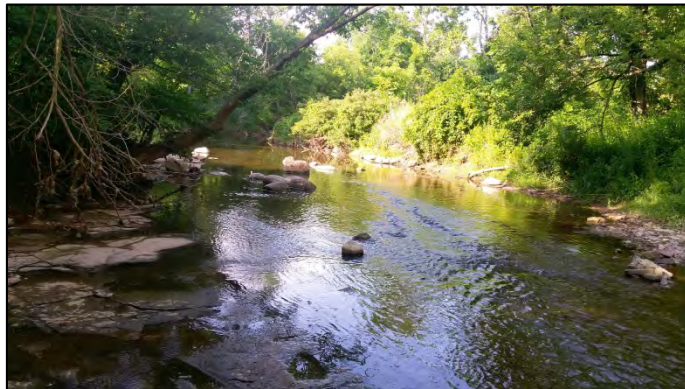
Stream BBR-3  
Beaver Creek

Perennial

Warmwater



Facing Upstream



Facing Downstream



Substrate





## PHOTOGRAPHIC RECORD

### Stream Photographs

**Client Name:**

American Transmission Systems, Inc.

**Site Location:**

Beaver-Brownhelm Junction and Black River 138 kV  
Transmission Line Rebuild Project

**Project No.**

60563907 and  
60568495

**Photo No. 4****Date/Location:**

July 11, 2018

**Description:**

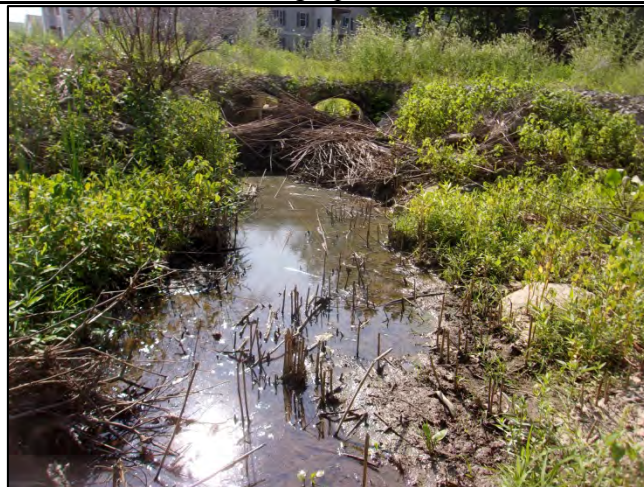
Stream BBR-4

Intermittent

Modified Class 1



Facing Upstream



Facing Downstream



Substrate



# PHOTOGRAPHIC RECORD

## Stream Photographs

**Client Name:**

American Transmission Systems, Inc.

**Site Location:**

Beaver-Brownhelm Junction and Black River 138 kV  
Transmission Line Rebuild Project

**Project No.**

60563907 and  
60568495

**Photo No. 5****Date/Location:**

July 11, 2018

**Description:**

Stream BBR-5

Perennial

Good Warmwater



Facing Upstream



Facing Downstream



Substrate





## PHOTOGRAPHIC RECORD

### Stream Photographs

**Client Name:**

American Transmission Systems, Inc.

**Site Location:**

Beaver-Brownhelm Junction and Black River 138 kV  
Transmission Line Rebuild Project

**Project No.**

60563907 and  
60568495

**Photo No. 6****Date/Location:**

July 11, 2018

**Description:**

Stream BBR-6

Perennial

Modified Class 2



Facing Upstream



Facing Downstream



Substrate





## PHOTOGRAPHIC RECORD

### Stream Photographs

**Client Name:**

American Transmission Systems, Inc.

**Site Location:**

Beaver-Brownhelm Junction and Black River 138 kV  
Transmission Line Rebuild Project

**Project No.**

60563907 and  
60568495

**Photo No. 7****Date/Location:**

July 12, 2018

**Description:**

Stream BBR-7  
Martin Run

Perennial

Warmwater



Facing Upstream






Facing Downstream








Substrate

<b>Client Name:</b> American Transmission Systems, Inc.	<b>Site Location:</b> Beaver-Brownhelm Junction and Black River 138 kV Transmission Line Rebuild Project	<b>Project No.</b> 60563907 and 60568495
--	--	--

<b>Photo No. 8</b>	 <p>Facing Upstream</p>
<b>Date/Location:</b> July 12, 2018	
<b>Description:</b> Stream BBR-8 Ephemeral Modified Class 1	
	 <p>Facing Downstream</p>
	 <p>Substrate</p>



<b>Client Name:</b> American Transmission Systems, Inc.	<b>Site Location:</b> Beaver-Brownhelm Junction and Black River 138 kV Transmission Line Rebuild Project	<b>Project No.</b> 60563907 and 60568495
--	--	--

<b>Photo No. 1</b>  <b>Date/Location:</b>  July 10, 2018  <b>Description:</b>  Wetland BBR-01  PEM Wetland  Category 1		
	 <p>Facing North</p>	 <p>Facing East</p>
	 <p>Facing East</p>	 <p>Facing North</p>
	 <p>Soil Pit</p>	





## PHOTOGRAPHIC RECORD

### Wetlands

**Client Name:**

American Transmission Systems, Inc.

**Site Location:**

Beaver-Brownhelm Junction and Black River 138 kV  
Transmission Line Rebuild Project

**Project No.**

60563907 and  
60568495

**Photo No. 2****Date/Location:**

July 10, 2018

**Description:**

Wetland BBR-02

PEM Wetland

Category 1



Facing North



Facing East



Facing South



Facing West



Soil Pit










## PHOTOGRAPHIC RECORD

### Wetlands

<b>Client Name:</b> American Transmission Systems, Inc.	<b>Site Location:</b> Beaver-Brownhelm Junction and Black River 138 kV Transmission Line Rebuild Project	<b>Project No.</b> 60563907 and 60568495
--	--	--

<b>Photo No. 3</b>				
<b>Date/Location:</b>				
July 9, 2018				
<b>Description:</b>				
Wetland BBR-03				
PEM Wetland				
Category 1				
				
	Facing North	Facing East		
				
	Facing South	Facing West		
				
	Soil Pit			



**Client Name:**

American Transmission Systems, Inc.

**Site Location:**

Beaver-Brownhelm Junction and Black River 138 kV  
Transmission Line Rebuild Project

**Project No.**

60563907 and  
60568495

**Photo No. 4**
**Date/Location:**

July 9, 2018

**Description:**

Wetland BBR-04

PEM Wetland

Category 1



Facing North



Facing East



Facing South



Facing West



Soil Pit





## PHOTOGRAPHIC RECORD

### Wetlands

**Client Name:**

American Transmission Systems, Inc.

**Site Location:**

Beaver-Brownhelm Junction and Black River 138 kV  
Transmission Line Rebuild Project

**Project No.**

60563907 and  
60568495

**Photo No. 5****Date/Location:**

July 9, 2017

**Description:**

Wetland BBR-05

PEM Wetland

Category 1



Facing North



Facing East



Facing South



Facing West



Soil Pit





## PHOTOGRAPHIC RECORD

### Wetlands

**Client Name:**

American Transmission Systems, Inc.

**Site Location:**

Beaver-Brownhelm Junction and Black River 138 kV  
Transmission Line Rebuild Project

**Project No.**

60563907 and  
60568495

**Photo No. 6****Date/Location:**

July 9, 2018

**Description:**

Wetland BBR-06

PEM Wetland

Category 1



Facing North



Facing East



Facing South



Facing West



Soil Pit





## PHOTOGRAPHIC RECORD

### Wetlands

**Client Name:**

American Transmission Systems, Inc.

**Site Location:**

Beaver-Brownhelm Junction and Black River 138 kV  
Transmission Line Rebuild Project

**Project No.**

60563907 and  
60568495

**Photo No. 7****Date/Location:**

July 9, 2018

**Description:**

Wetland BBR-7

PEM Wetland

Category 1



Facing North



Facing East



Facing South



Facing West



Soil Pit





## PHOTOGRAPHIC RECORD

### Wetlands

**Client Name:**

American Transmission Systems, Inc.

**Site Location:**

Beaver-Brownhelm Junction and Black River 138 kV  
Transmission Line Rebuild Project

**Project No.**

60563907 and  
60568495

**Photo No. 8****Date/Location:**

July 9, 2018

**Description:**

Wetland AbMe-8

PEM Wetland

Category 1



Facing North



Facing East



Facing South



Facing West



Soil Pit



## PHOTOGRAPHIC RECORD

### Wetlands

**Client Name:**

American Transmission Systems, Inc.

**Site Location:**

Beaver-Brownhelm Junction and Black River 138 kV  
Transmission Line Rebuild Project

**Project No.**

60563907 and  
60568495

**Photo No. 9****Date/Location:**

July 9, 2018

**Description:**

Wetland BBR-9

PEM Wetland

Category 1



Facing North



Facing East



Facing South



Facing West



Soil Pit





## PHOTOGRAPHIC RECORD

### Wetlands

**Client Name:**

American Transmission Systems, Inc.

**Site Location:**

Beaver-Brownhelm Junction and Black River 138 kV  
Transmission Line Rebuild Project

**Project No.**

60563907 and  
60568495

**Photo No. 10****Date/Location:**

July 9, 2018

**Description:**

Wetland BBR-10

PEM Wetland

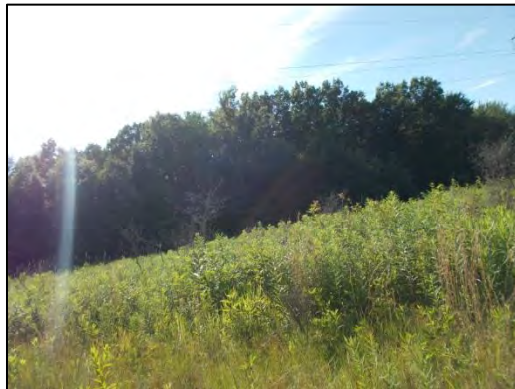
Category 1



Facing North



Facing East



Facing South



Facing West



Soil Pit



## PHOTOGRAPHIC RECORD

### Wetlands

<b>Client Name:</b> American Transmission Systems, Inc.	<b>Site Location:</b> Beaver-Brownhelm Junction and Black River 138 kV Transmission Line Rebuild Project	<b>Project No.</b> 60563907 and 60568495
--	--	--

<b>Photo No. 11</b>				
<b>Date/Location:</b>  July 10, 2018				
<b>Description:</b>  Wetland BBR-11  PEM Wetland  Category 1				
				
		Facing North	Facing East	
				
		Facing South	Facing West	
				
		Soil Pit		





## PHOTOGRAPHIC RECORD

### Wetlands

**Client Name:**

American Transmission Systems, Inc.

**Site Location:**

Beaver-Brownhelm Junction and Black River 138 kV  
Transmission Line Rebuild Project

**Project No.**

60563907 and  
60568495

**Photo No. 12****Date/Location:**

July 10, 2018

**Description:**

Wetland BBR-12

PEM Wetland

Category 1



Facing North



Facing East



Facing South



Facing West



Soil Pit



## PHOTOGRAPHIC RECORD

### Wetlands

**Client Name:**

American Transmission Systems, Inc.

**Site Location:**

Beaver-Brownhelm Junction and Black River 138 kV  
Transmission Line Rebuild Project

**Project No.**

60563907 and  
60568495

**Photo No. 13****Date/Location:**

July 10, 2018

**Description:**

Wetland BBR-13

PEM Wetland

Category 1



Facing North



Facing East



Facing South



Facing West



Soil Pit





## PHOTOGRAPHIC RECORD

### Wetlands

**Client Name:**

American Transmission Systems, Inc.

**Site Location:**

Beaver-Brownhelm Junction and Black River 138 kV  
Transmission Line Rebuild Project

**Project No.**

60563907 and  
60568495

**Photo No. 14****Date/Location:**

July 10, 2018

**Description:**

Wetland BBR-14

PEM Wetland

Category 1



Facing North



Facing East



Facing South



Facing West



Soil Pit





## PHOTOGRAPHIC RECORD

### Wetlands

**Client Name:**

American Transmission Systems, Inc.

**Site Location:**

Beaver-Brownhelm Junction and Black River 138 kV  
Transmission Line Rebuild Project

**Project No.**

60563907 and  
60568495

**Photo No. 15****Date/Location:**

July 10, 2018

**Description:**

Wetland BBR-15

PEM Wetland

Category 1



Facing North



Facing East



Facing South



Facing West



Soil Pit





## PHOTOGRAPHIC RECORD

### Wetlands

**Client Name:**

American Transmission Systems, Inc.

**Site Location:**

Beaver-Brownhelm Junction and Black River 138 kV  
Transmission Line Rebuild Project

**Project No.**

60563907 and  
60568495

**Photo No. 16****Date/Location:**

July 11, 2018

**Description:**

Wetland BBR-16

PSS Wetland

Category 2



Facing North



Facing East



Facing South



Facing West



Soil Pit



<b>Client Name:</b> American Transmission Systems, Inc.	<b>Site Location:</b> Beaver-Brownhelm Junction and Black River 138 kV Transmission Line Rebuild Project	<b>Project No.</b> 60563907 and 60568495
--	--	--

<b>Photo No. 17</b>		
<b>Date/Location:</b>  July 11, 2018		
<b>Description:</b>  Wetland BBR-17  PEM Wetland  Category 1		
	 <p>Facing North</p>	 <p>Facing East</p>
	 <p>Facing South</p>	 <p>Facing West</p>
	 <p>Soil Pit</p>	





## PHOTOGRAPHIC RECORD

### Wetlands

**Client Name:**

American Transmission Systems, Inc.

**Site Location:**

Beaver-Brownhelm Junction and Black River 138 kV  
Transmission Line Rebuild Project

**Project No.**

60563907 and  
60568495

**Photo No. 18****Date/Location:**

July 12, 2018

**Description:**

Wetland BBR-18

PEM Wetland

Category 1



Facing North



Facing East



Facing South



Facing West



Soil Pit



## PHOTOGRAPHIC RECORD

### Wetlands

**Client Name:**

American Transmission Systems, Inc.

**Site Location:**

Beaver-Brownhelm Junction and Black River 138 kV  
Transmission Line Rebuild Project

**Project No.**

60563907 and  
60568495

**Photo No. 19****Date/Location:**

July 12, 2018

**Description:**

Wetland BBR-19

PEM Wetland

Category 1



Facing North



Facing East



Facing South



Facing West



Soil Pit





# PHOTOGRAPHIC RECORD

## Wetlands

**Client Name:**

American Transmission Systems, Inc.

**Site Location:**

Beaver-Brownhelm Junction and Black River 138 kV  
Transmission Line Rebuild Project

**Project No.**

60563907 and  
60568495

**Photo No. 20****Date/Location:**

July 12, 2018

**Description:**

Wetland BBR-20

PSS Wetland

Category 2



Facing North



Facing East



Facing South



Facing West



Soil Pit



## PHOTOGRAPHIC RECORD

### Wetlands

**Client Name:**

American Transmission Systems, Inc.

**Site Location:**

Beaver-Brownhelm Junction and Black River 138 kV  
Transmission Line Rebuild Project

**Project No.**

60563907 and  
60568495

**Photo No. 21****Date/Location:**

July 11, 2018

**Description:**

Wetland BBR-21

PEM Wetland

Category 1



Facing North



Facing East



Facing South



Facing West



Soil Pit





# PHOTOGRAPHIC RECORD

## Wetlands

**Client Name:**

American Transmission Systems, Inc.

**Site Location:**

Beaver-Brownhelm Junction and Black River 138 kV  
Transmission Line Rebuild Project

**Project No.**

60563907 and  
60568495

**Photo No. 22****Date/Location:**

July 11, 2018

**Description:**

Wetland BBR-22

PEM Wetland

Category 1



Facing North



Facing East



Facing South



Facing West



Soil Pit





## PHOTOGRAPHIC RECORD

### Wetlands

**Client Name:**

American Transmission Systems, Inc.

**Site Location:**

Beaver-Brownhelm Junction and Black River 138 kV  
Transmission Line Rebuild Project

**Project No.**

60563907 and  
60568495

**Photo No. 23****Date/Location:**

July 11, 2017

**Description:**

Wetland BBR-23

PFO Wetland

Category 2



Facing North



Facing East



Facing South



Facing West



Soil Pit





## PHOTOGRAPHIC RECORD

### Wetlands

**Client Name:**

American Transmission Systems, Inc.

**Site Location:**

Beaver-Brownhelm Junction and Black River 138 kV  
Transmission Line Rebuild Project

**Project No.**

60563907 and  
60568495

**Photo No. 24****Date/Location:**

October 08, 2018

**Description:**

Wetland BBR-24

PEM Wetland

Category 1



Facing North



Facing East



Facing South



Facing West



Soil Pit





## PHOTOGRAPHIC RECORD

### Ponds

<b>Client Name:</b> American Transmission Systems, Inc.	<b>Site Location:</b> Beaver-Brownhelm Junction and Black River 138 kV Transmission Line Rebuild Project	<b>Project No.</b> 60563907 and 60568495
--	--	--

<b>Photo No. 1</b>	
<b>Date/Location:</b>  July 11, 2018	
<b>Description:</b>  Pond BBR-01  Facing North	

<b>Photo No. 2</b>	
<b>Date/Location:</b>  October 10, 2018	
<b>Description:</b>  Pond BBR-02  Facing North	





## PHOTOGRAPHIC RECORD

### Ponds

<b>Client Name:</b> American Transmission Systems, Inc.	<b>Site Location:</b> Beaver-Brownhelm Junction and Black River 138 kV Transmission Line Rebuild Project	<b>Project No.</b> 60563907 and 60568495
--	--	--

<b>Photo No. 3</b>	
<b>Date/Location:</b>  July 11, 2018	
<b>Description:</b>  Pond BBR-03  Facing South	

<b>Photo No. 4</b>	
<b>Date/Location:</b>  July 11, 2018	
<b>Description:</b>  Pond BBR-04  Facing West	





## PHOTOGRAPHIC RECORD

### Ponds

<b>Client Name:</b> American Transmission Systems, Inc.	<b>Site Location:</b> Beaver-Brownhelm Junction and Black River 138 kV Transmission Line Rebuild Project	<b>Project No.</b> 60563907 and 60568495
--	--	--

<b>Photo No. 5</b>	
<b>Date/Location:</b> July 11, 2018	
<b>Description:</b> Pond BBR-05 Facing West	

<b>Photo No. 6</b>	
<b>Date/Location:</b> July 11, 2018	
<b>Description:</b> Pond BBR-06 Facing South	






## PHOTOGRAPHIC RECORD

### Ponds

<b>Client Name:</b> American Transmission Systems, Inc.	<b>Site Location:</b> Beaver-Brownhelm Junction and Black River 138 kV Transmission Line Rebuild Project	<b>Project No.</b> 60563907 and 60568495
--	--	--

<b>Photo No. 7</b>	
<b>Date/Location:</b> July 11, 2018	
<b>Description:</b> Pond BBR-07 Facing Northwest	

<b>Photo No. 8</b>	
<b>Date/Location:</b> July 11, 2018	
<b>Description:</b> Pond BBR-08 Facing East	





## PHOTOGRAPHIC RECORD

### Ponds

<b>Client Name:</b> American Transmission Systems, Inc.	<b>Site Location:</b> Beaver-Brownhelm Junction and Black River 138 kV Transmission Line Rebuild Project	<b>Project No.</b> 60563907 and 60568495
--	--	--

<b>Photo No. 9</b>	
<b>Date/Location:</b> July 11, 2018	
<b>Description:</b> Pond BBR-09 Facing North	

<b>Photo No. 10</b>	
<b>Date/Location:</b> July 11, 2018	
<b>Description:</b> Pond BBR-10 Facing Southwest	



**This foregoing document was electronically filed with the Public Utilities**

**Commission of Ohio Docketing Information System on**

**11/15/2018 3:16:51 PM**

**in**

**Case No(s). 18-1395-EL-BLN**

Summary: Letter of Notification Application Appendices 10 of 10 electronically filed by Mr. Robert J Schmidt on behalf of American Transmission Systems Inc.