

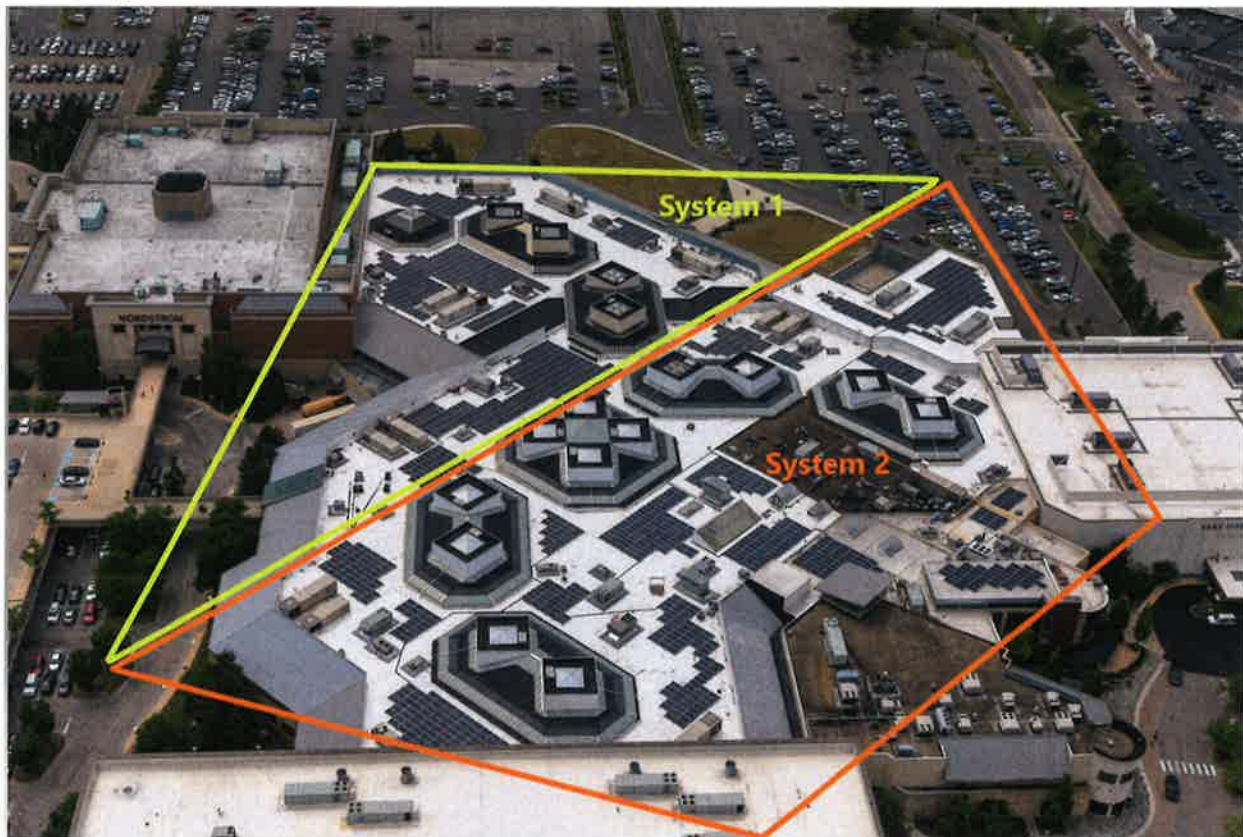
**Case No. 18-1504-EL-REN
Beachwood System 2
Staff Interrogatories – Initial Set**

Question 1: In Section G.1, the nameplate capacity is 269.8 kW and the number of modules is 792 340W which would give you a nameplate capacity of 269.28 kW. However, in section G.4 you state that the system has 1,584 340W panels which would give you a nameplate capacity of 538.56 kW and in section I.a the nameplate capacity is 269.00 kW. What is the correct nameplate capacity, number of modules and module wattage?

Answer 1: The System is 269.28 kW-DC (199.80 kW-AC), comprised of 792 modules that are 340W.

Question 2: The facility photos of Beachwood 1 and 2 are the same. Are both facilities in the photo? If so, please indicate on the photo which module go with which facility.

Answer 2:



This foregoing document was electronically filed with the Public Utilities

Commission of Ohio Docketing Information System on

10/19/2018 4:46:23 PM

in

Case No(s). 18-1504-EL-REN

Summary: Reply electronically filed by Mr. Tom Rollason on behalf of Rollason, Tom Mr.