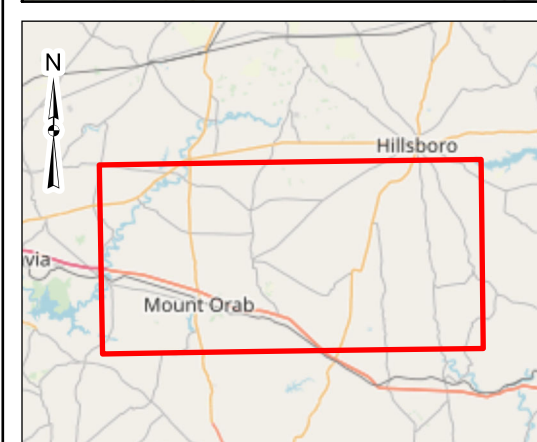
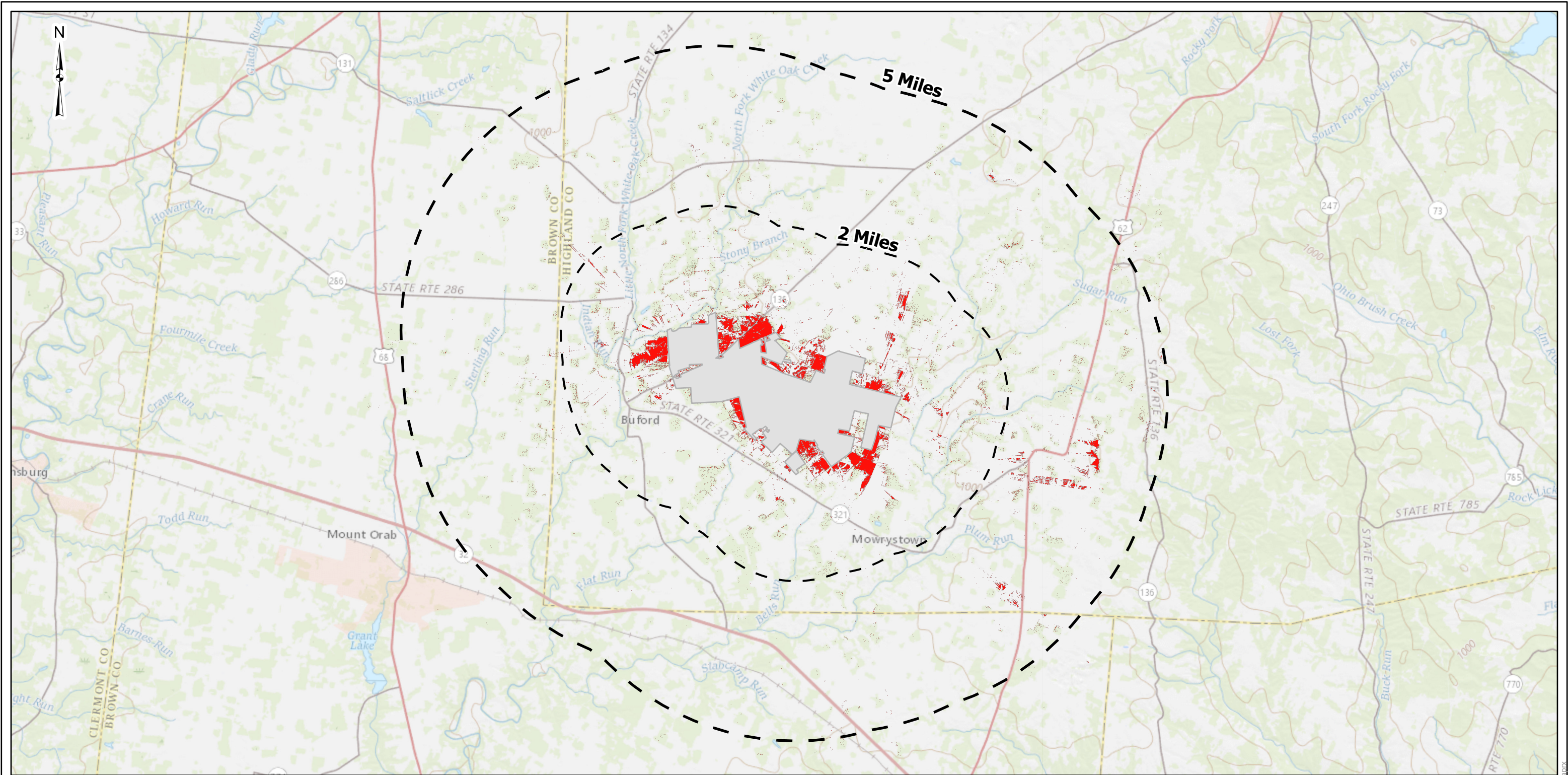


Figure 16
5-Mile LiDAR Visibility
Map



- Project Area
- 2 Miles from Project Area
- 5 Miles from Project Area

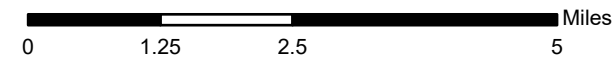
Visibility

Value

High

Low

DATA SOURCES:
ESRI WMS - USGS National Map, OpenStreetMap



1:115,000

Project No.:	49187638
Date:	Sep 2018
Drawn By:	PNM
Reviewed By:	JRG

611 Lunken Park Dr.

Cincinnati, OH 45226

PH. (513) 321 5816

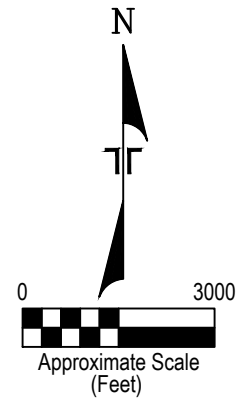
terracon.com

LIDAR Viewshed Analysis
Highland Solar Clay Township, OH 45171

Exhibit
1

\\GIS\49187638_HighlandSolar\Map\49187638_49187638.aprx

Figure 17
Map of Agricultural
Resources



LEGEND

- PROJECT BOUNDARY
- AGRICULTURAL DISTRICTS
- PARCEL NOT ENROLLED IN CAUV PROGRAM
- POTENTIAL SOLAR ARRAY
- WOODED AREAS
- CORN/SOYBEANS
- SOYBEANS/COTTON
- DECIDUOUS FOREST

Project Mngr:	EK
Drawn By:	JSL
Checked By:	MRF/EK
Approved By:	EK

Project No.	49187638
Scale:	AS SHOWN
File No.	49187638-
Date:	OCTOBER 2018

Terracon
Consulting Engineers and Scientists

2105 Newpoint Place, Ste. 600 Lawrenceville, GA 30043
(770) 623-0755 (770) 623-9628

<p>AGRICULTURAL RESOURCES MAP</p> <p>ECOLOGICAL RESOURCES ANALYSIS REPORT</p> <p>PROPOSED HIGHLAND SOLAR FARM</p> <p>STATE ROUTE 138 & HIGHLAND COUNTY ROAD 5</p> <p>BUFORD, HIGHLAND COUNTY, OH</p>
--

EXHIBIT
1

This foregoing document was electronically filed with the Public Utilities

Commission of Ohio Docketing Information System on

10/9/2018 6:42:28 PM

in

Case No(s). 18-1334-EL-BGN

Summary: Application Figures (Part 9 of 9) electronically filed by Ms. Karen A. Winters on behalf of Hecate Energy Highland LLC