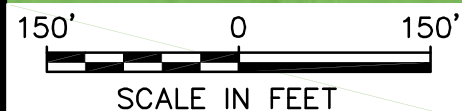
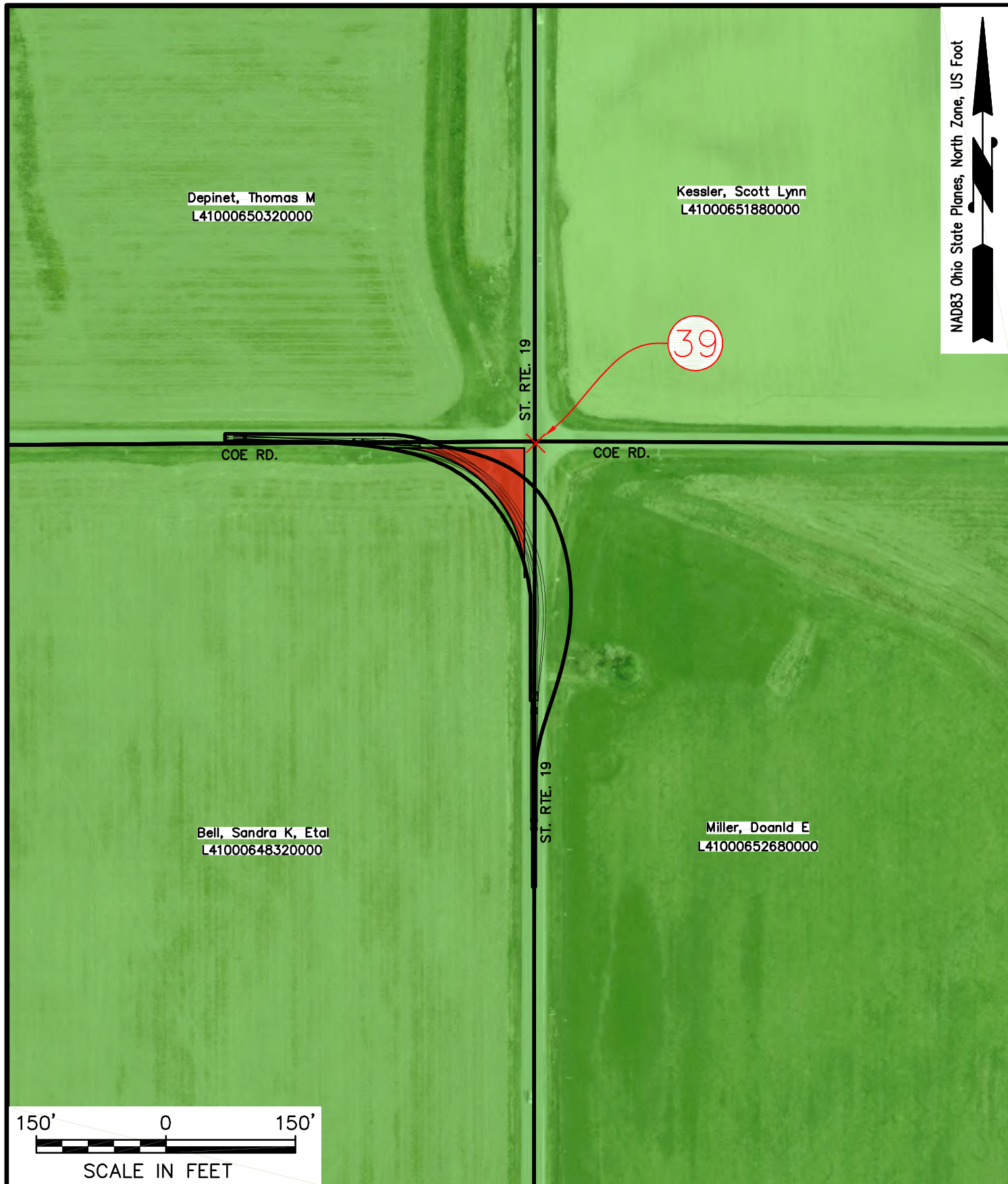



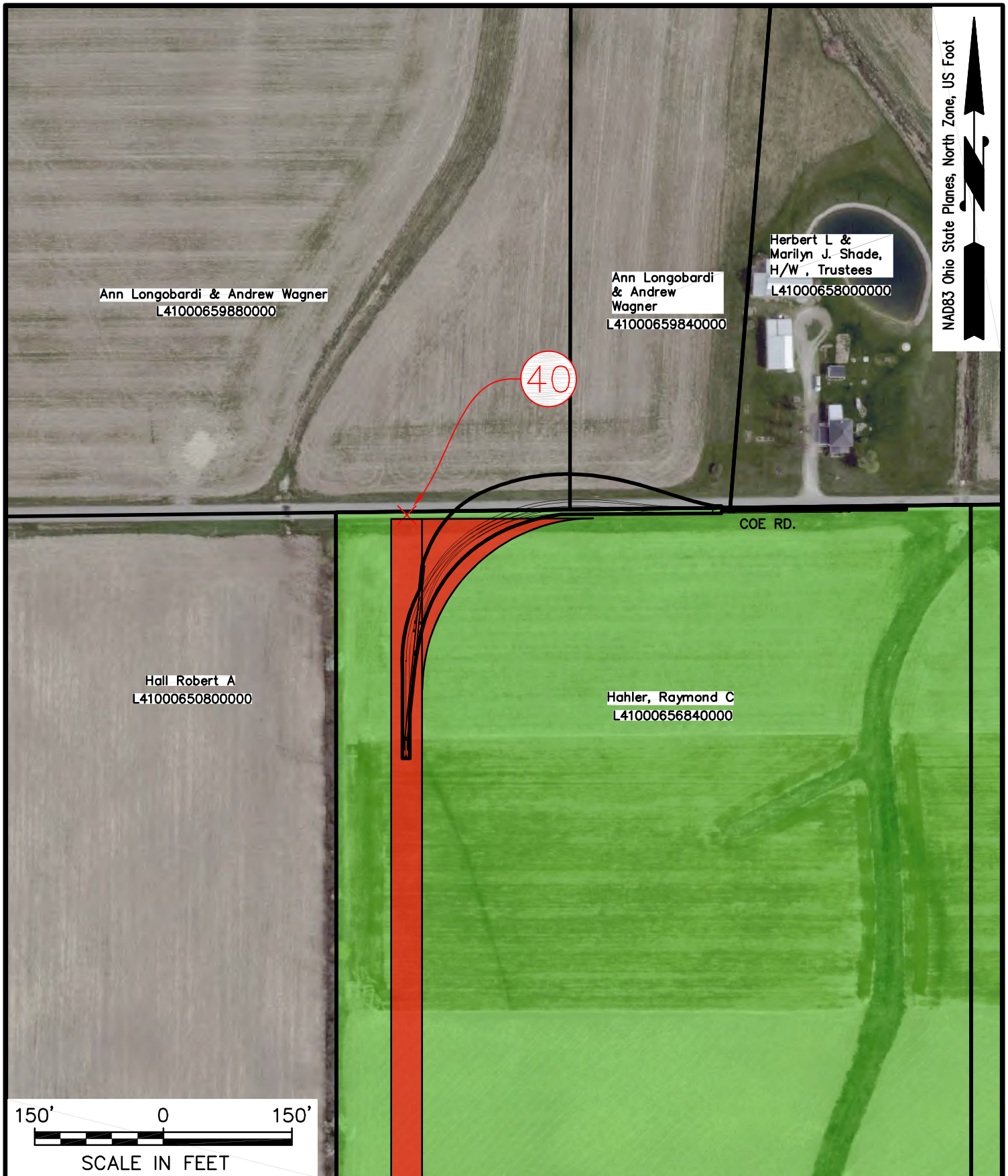
<p>bba</p> <p>Surveyors Engineers Planners</p> <p>Bennett Brewer & Associates, LLC 23 East Main Street, Suite 200 Frostburg, MD 21532 Phone 301-687-0494</p>	<p>CLIENT:</p> <p>S-POWER SUSTAINABLE POWER GROUP</p> <p>SENECA WIND, LLC 2180 SOUTH 1300 EAST, SUITE 600 SALT LAKE CITY, UT 84106</p>	<p>PROJECT: SENECA WIND</p> <p>PROJECT NO.: 2018031</p> <p>FIGURE 3 TURNING MOVEMENTS EXHIBIT</p>	<p>DATE: 07/18/18</p> <p>SHEET: T38</p>
---	---	---	---



bba
 Surveyors | Engineers | Planners
 Bennett Brewer & Associates, LLC
 23 East Main Street, Suite 200
 Frostburg, MD 21532
 Phone 301-687-0494

CLIENT:
 **S-POWER**
 SUSTAINABLE POWER GROUP
 SENECA WIND, LLC
 2180 SOUTH 1300 EAST, SUITE 600
 SALT LAKE CITY, UT 84106

PROJECT: SENECA WIND	
PROJECT NO.: 2018031	DATE: 07/18/18
FIGURE 3 TURNING MOVEMENTS EXHIBIT	
SHEET: T39	



bba
Surveyors | Engineers | Planners

Bennett Brewer & Associates, LLC
23 East Main Street, Suite 200
Frostburg, MD 21532
Phone 301-687-0494

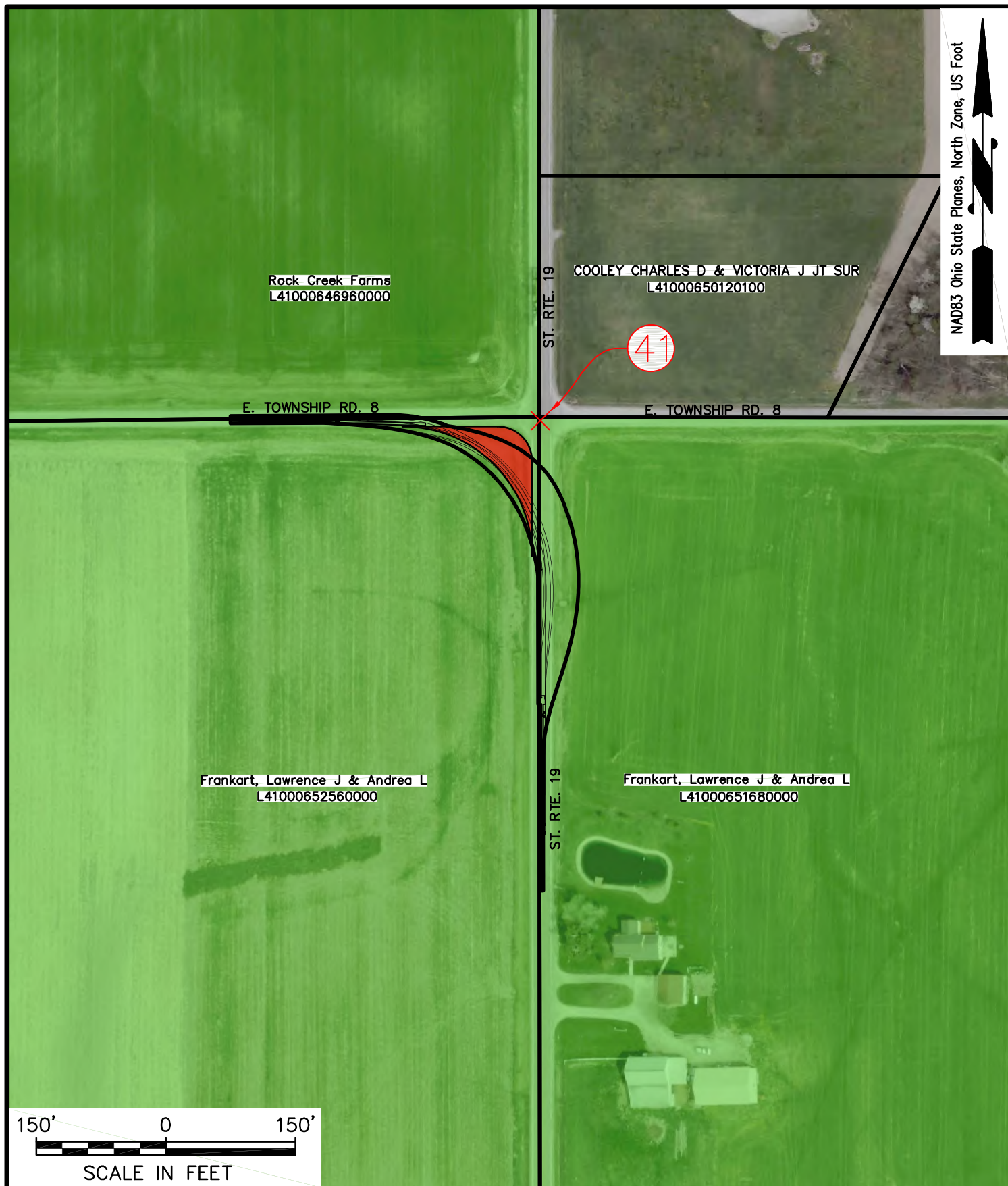
CLIENT:

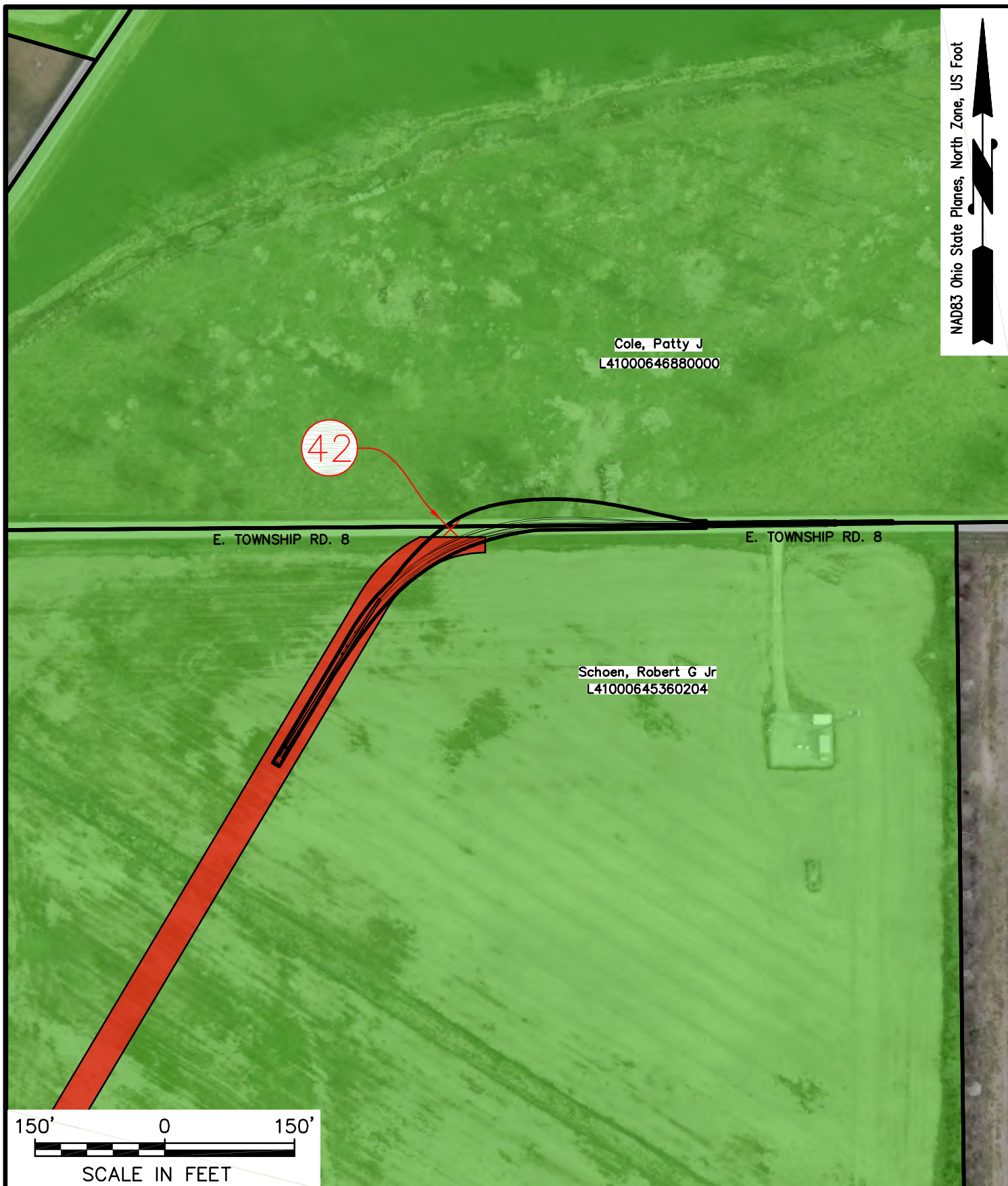
S-POWER
SUSTAINABLE POWER GROUP

SENECA WIND, LLC
2180 SOUTH 1300 EAST, SUITE 600
SALT LAKE CITY, UT 84106

PROJECT: SENECA WIND

PROJECT NO.: 2018031	DATE: 07/18/18
FIGURE 3 TURNING MOVEMENTS EXHIBIT	SHEET: T40





bba

Surveyors | Engineers | Planners

Bennett Brewer & Associates, LLC
23 East Main Street, Suite 200
Frostburg, MD 21532
Phone 301-687-0494

CLIENT:



S-POWER
SUSTAINABLE POWER GROUP

SENeca WIND, LLC
2180 SOUTH 1300 EAST, SUITE 600
SALT LAKE CITY, UT 84106

PROJECT:

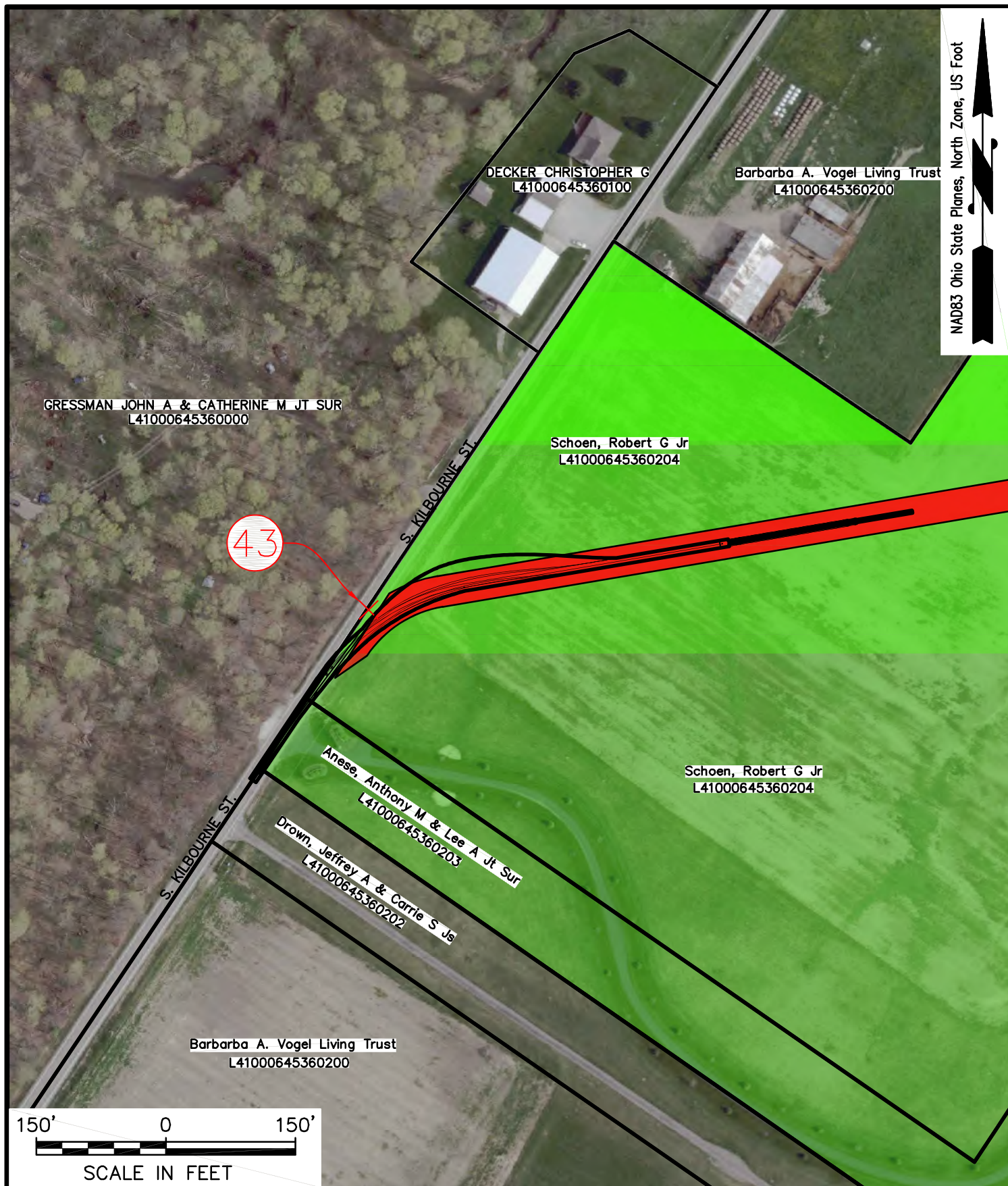
SENeca WIND

PROJECT NO.: 2018031

DATE: 07/18/18

FIGURE 3
TURNING MOVEMENTS EXHIBIT

SHEET:
T42



bba

Surveyors | Engineers | Planners

Bennett Brewer & Associates, LLC
23 East Main Street, Suite 200
Frostburg, MD 21532
Phone 301-687-0494

CLIENT:

S-POWER
SUSTAINABLE POWER GROUP

SENECA WIND, LLC
2180 SOUTH 1300 EAST, SUITE 600
SALT LAKE CITY, UT 84106

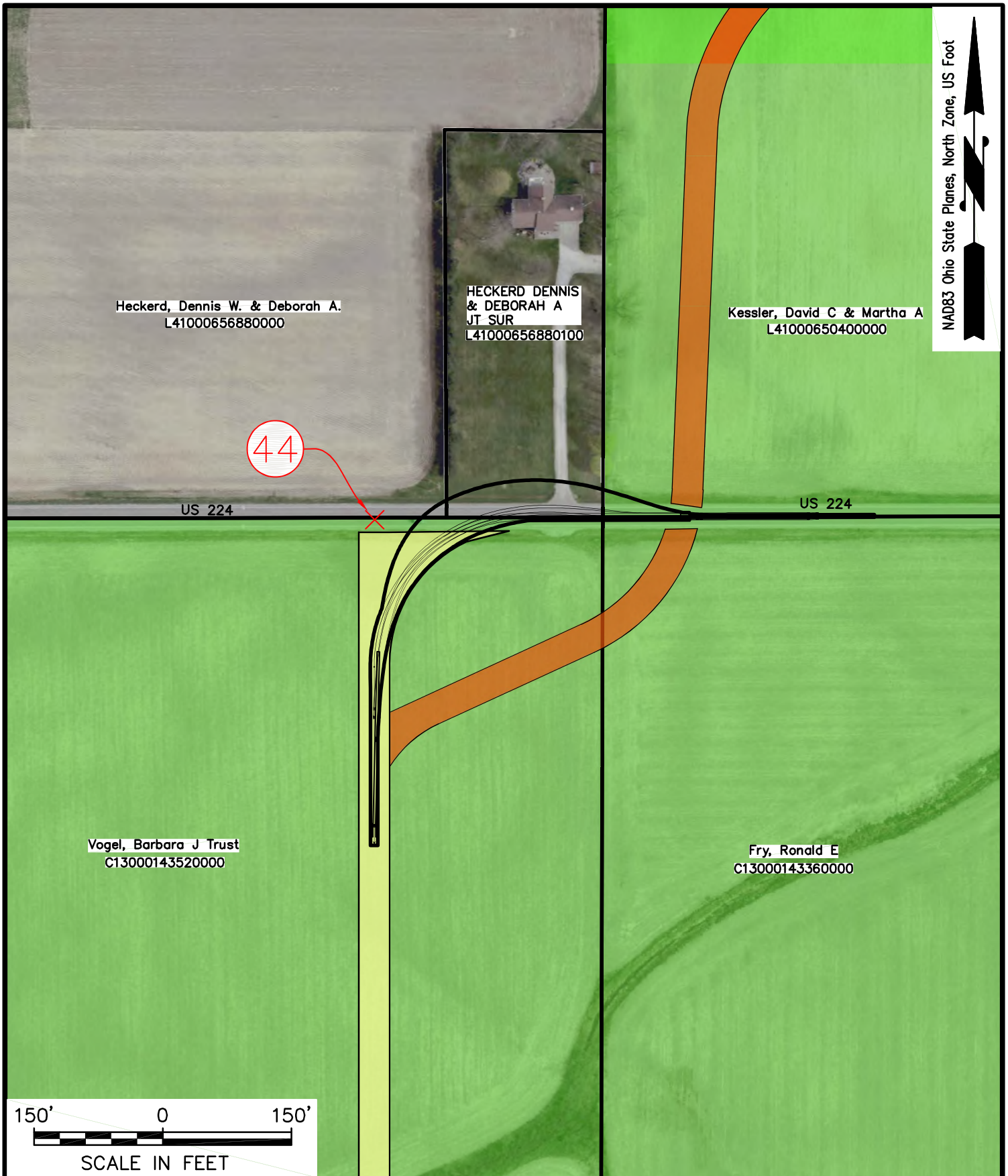
PROJECT: SENECA WIND

PROJECT NO.: 2018031

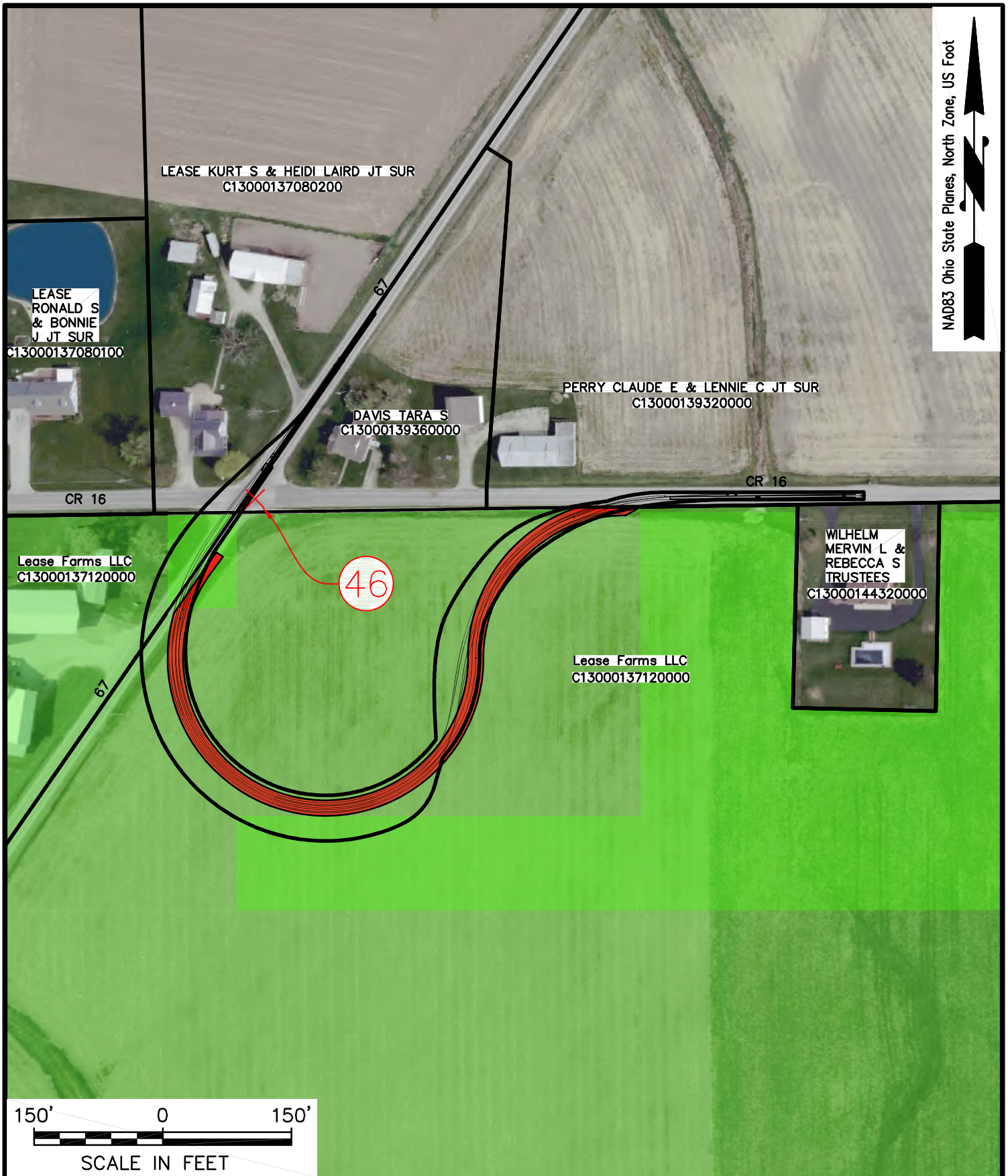
DATE: 07/18/18

FIGURE 3
TURNING MOVEMENTS EXHIBIT

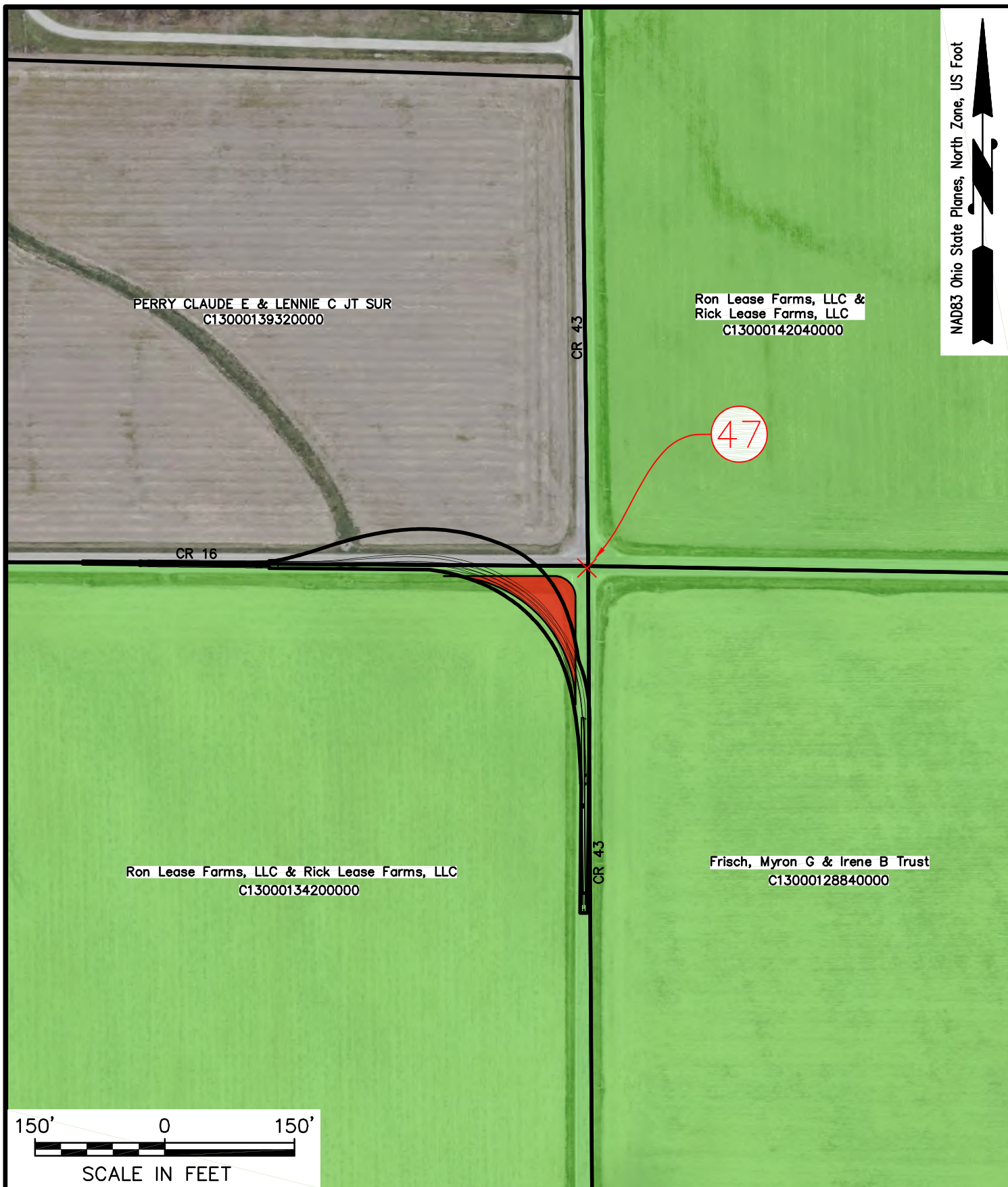
SHEET: T43



<p>bba</p> <p>Surveyors Engineers Planners</p> <p>Bennett Brewer & Associates, LLC 23 East Main Street, Suite 200 Frostburg, MD 21532 Phone 301-687-0494</p>	<p>CLIENT:</p> <p>S-POWER SUSTAINABLE POWER GROUP</p> <p>SENECA WIND, LLC 2180 SOUTH 1300 EAST, SUITE 600 SALT LAKE CITY, UT 84106</p>	<p>PROJECT: SENECA WIND</p> <p>PROJECT NO.: 2018031</p> <p>FIGURE 3 TURNING MOVEMENTS EXHIBIT</p>	<p>DATE: 07/18/18</p> <p>SHEET: T44</p>
---	---	---	---



<p>bba</p> <p>Surveyors Engineers Planners</p> <p>Bennett Brewer & Associates, LLC 23 East Main Street, Suite 200 Frostburg, MD 21532 Phone 301-687-0494</p>	<p>CLIENT:</p> <p>S-POWER SUSTAINABLE POWER GROUP</p> <p>SENECA WIND, LLC 2180 SOUTH 1300 EAST, SUITE 600 SALT LAKE CITY, UT 84106</p>	<p>PROJECT: SENECA WIND</p> <p>PROJECT NO.: 2018031</p> <p>FIGURE 3 TURNING MOVEMENTS EXHIBIT</p>	<p>DATE: 07/18/18</p> <p>SHEET: T46</p>
---	---	---	---



bba

Surveyors | Engineers | Planners

Bennett Brewer & Associates, LLC
23 East Main Street, Suite 200
Frostburg, MD 21532
Phone 301-687-0494

CLIENT:



S-POWER
SUSTAINABLE POWER GROUP

SENECA WIND, LLC
2180 SOUTH 1300 EAST, SUITE 600
SALT LAKE CITY, UT 84106

PROJECT:

SENECA WIND

PROJECT NO.: 2018031

DATE: 07/18/18

FIGURE 3
TURNING MOVEMENTS EXHIBIT

SHEET:
T47

NAD83 Ohio State Planes, North Zone, US Foot



Ron Lease Farms, LLC & Rick Lease Farms, LLC
C13000134200000

Frisch, Myron G & Irene B Trust
C13000128840000

CR 43

CR 43

48

Morter, Delbert L & Donna L Tru
C13000142200000

150' 0 150'
SCALE IN FEET

bba

Surveyors | Engineers | Planners

Bennett Brewer & Associates, LLC
23 East Main Street, Suite 200
Frostburg, MD 21532
Phone 301-687-0494

CLIENT:



S-POWER
SUSTAINABLE POWER GROUP

SENECA WIND, LLC
2180 SOUTH 1300 EAST, SUITE 600
SALT LAKE CITY, UT 84106

PROJECT:

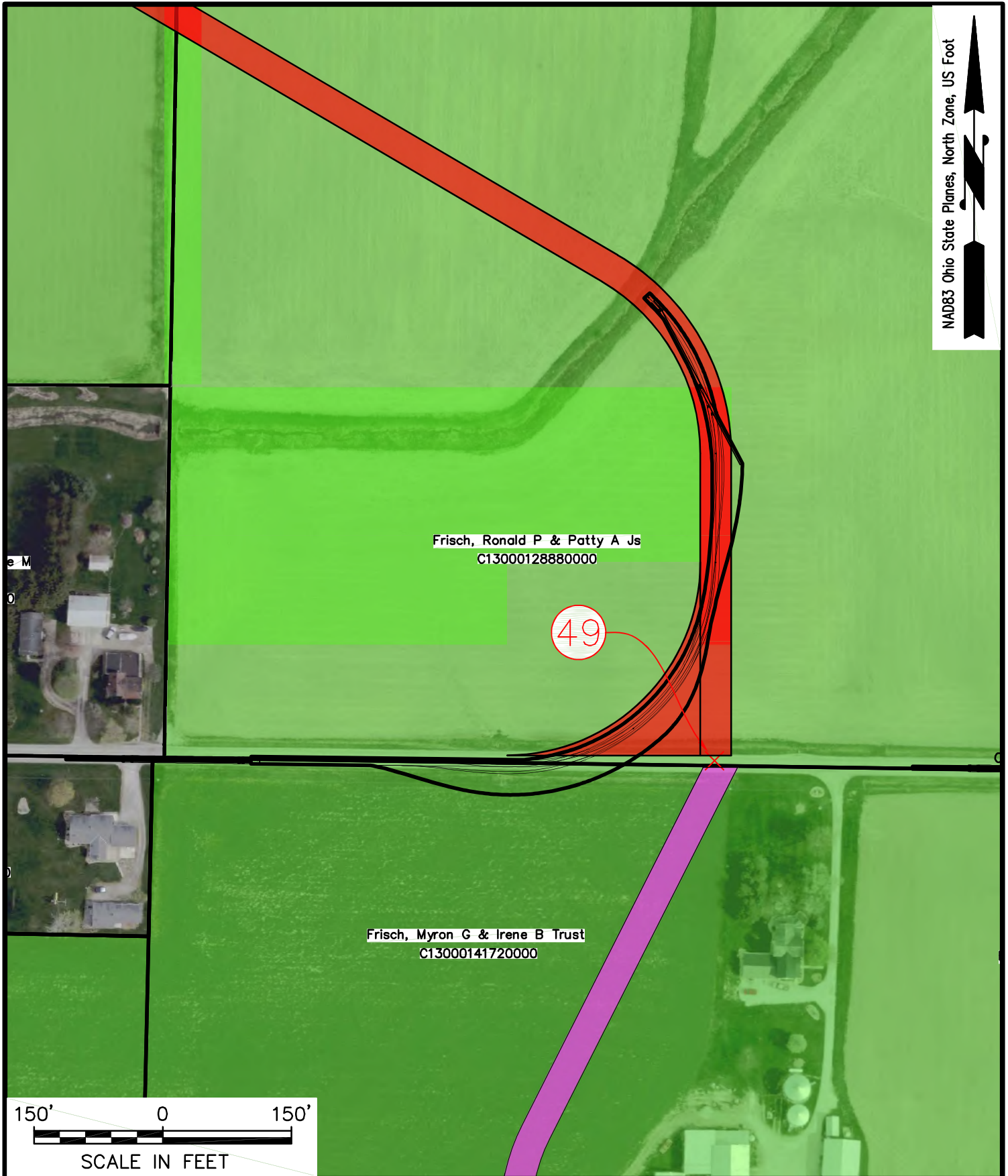
SENECA WIND

PROJECT NO.: 2018031

DATE: 07/18/18

FIGURE 3
TURNING MOVEMENTS EXHIBIT

SHEET:
T48



NAD83 Ohio State Planes, North Zone, US Foot

150' 0 150'
SCALE IN FEET

bba
Surveyors | Engineers | Planners
Bennett Brewer & Associates, LLC
23 East Main Street, Suite 200
Frostburg, MD 21532
Phone 301-687-0494

CLIENT:
S-POWER
SUSTAINABLE POWER GROUP
SENECA WIND, LLC
2180 SOUTH 1300 EAST, SUITE 600
SALT LAKE CITY, UT 84106

PROJECT: SENECA WIND	
PROJECT NO.: 2018031	DATE: 07/18/18
FIGURE 3 TURNING MOVEMENTS EXHIBIT	
SHEET: T49	

NAD83 Ohio State Planes, North Zone, US Foot



Frisch, Ronald P & Patty A Js
C13000128880000

Frisch, Ronald P & Patty A Js
C13000128880000

50

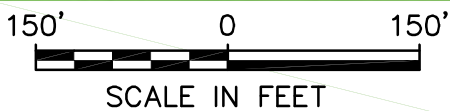
CR 16

CR 16

Frisch, Myron G & Irene B Trust
C13000141720000

PHILDARY LLC
C13000138760000

CEMETERY RD.



bba

Surveyors | Engineers | Planners

Bennett Brewer & Associates, LLC
23 East Main Street, Suite 200
Frostburg, MD 21532
Phone 301-687-0494

CLIENT:



S-POWER
SUSTAINABLE POWER GROUP

SENECA WIND, LLC
2180 SOUTH 1300 EAST, SUITE 600
SALT LAKE CITY, UT 84106

PROJECT:

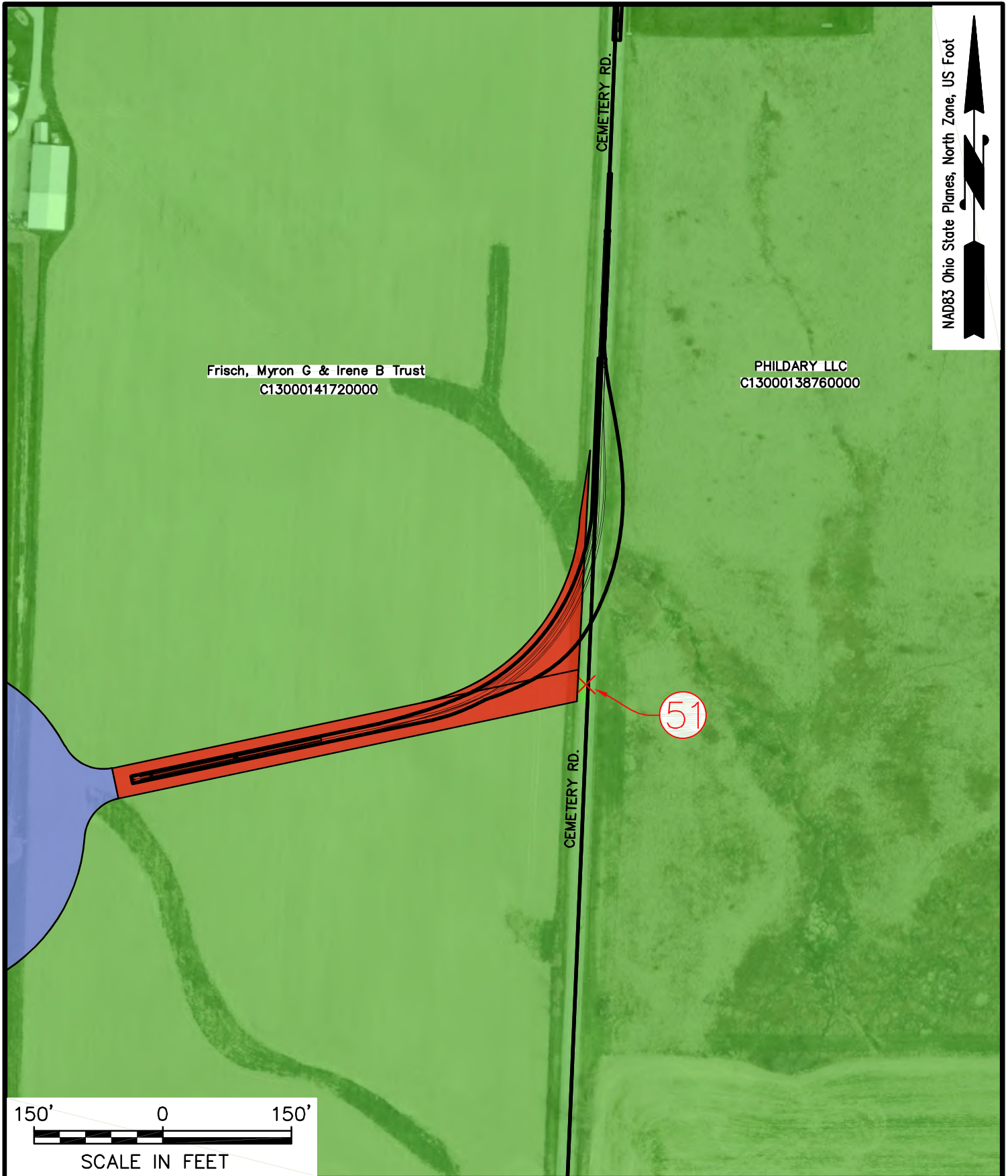
SENECA WIND

PROJECT NO.: 2018031

DATE: 07/18/18

FIGURE 3
TURNING MOVEMENTS EXHIBIT

SHEET:
T50



<p>bba</p> <p>Surveyors Engineers Planners</p> <p>Bennett Brewer & Associates, LLC 23 East Main Street, Suite 200 Frostburg, MD 21532 Phone 301-687-0494</p>	<p>CLIENT:</p> <p>S-POWER SUSTAINABLE POWER GROUP</p> <p>SENECA WIND, LLC 2180 SOUTH 1300 EAST, SUITE 600 SALT LAKE CITY, UT 84106</p>	<p>PROJECT: SENECA WIND</p> <p>PROJECT NO.: 2018031</p> <p>FIGURE 3 TURNING MOVEMENTS EXHIBIT</p>	<p>DATE: 07/18/18</p> <p>SHEET: T51</p>
---	---	---	---



This foregoing document was electronically filed with the Public Utilities

Commission of Ohio Docketing Information System on

7/20/2018 4:33:54 PM

in

Case No(s). 18-0488-EL-BGN

Summary: Correspondence Submitting Appendix E - Part 3 of 3 electronically filed by Teresa Orahoo on behalf of Dylan F. Borchers