

Appendix A

Composite Map

Republic Wind Farm

Sandusky and Seneca
Counties, Ohio

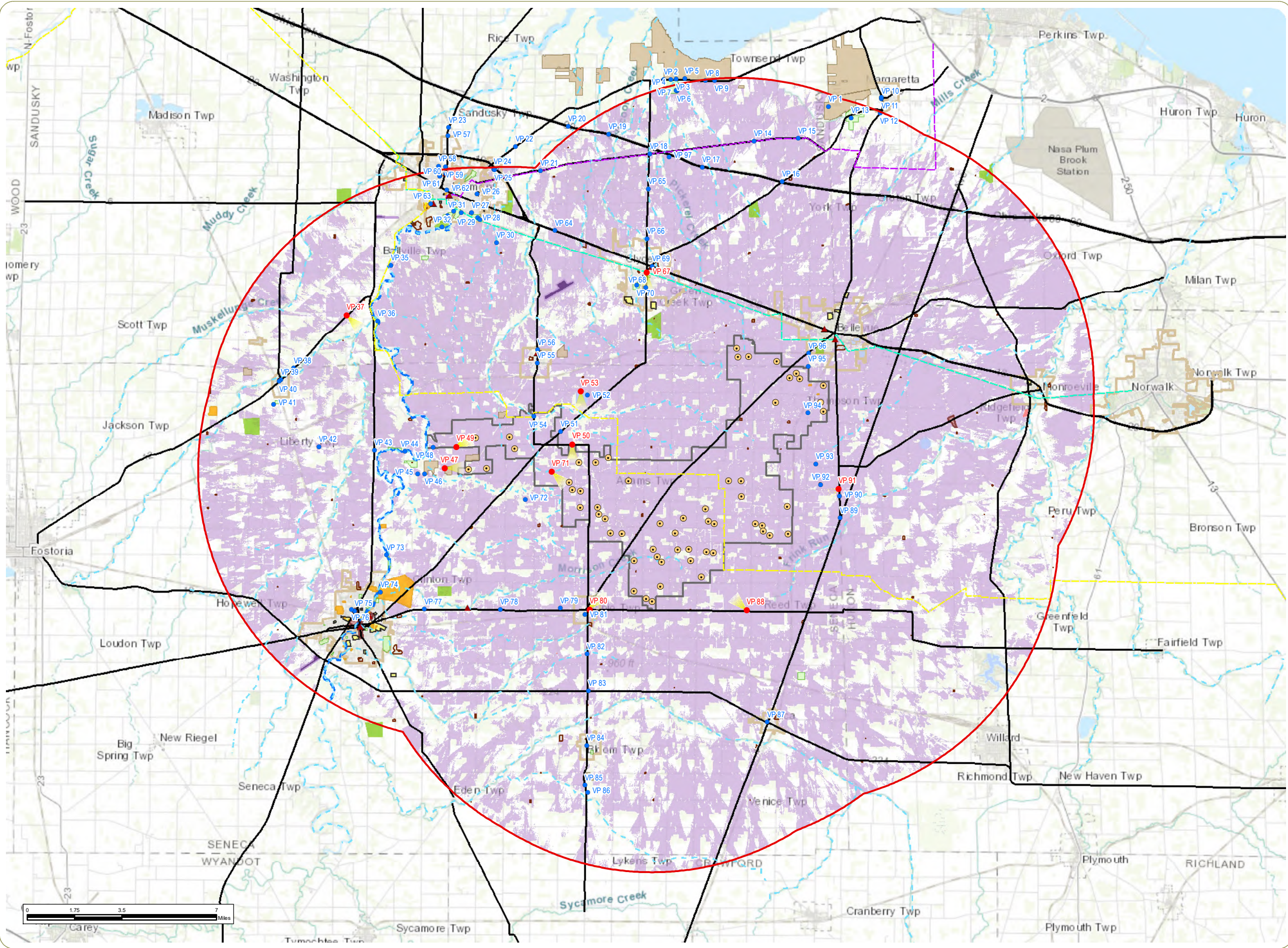
Appendix A: Composite Map

- Simulated Viewpoint Location
- Viewpoint Location
- Wind Turbine
- ▲ State Historic Marker
- Buckeye Trail
- Local Bike Route
- State Bike Route
- River & Stream
- Wild & Scenic River
- Major Road
- Airport
- Cemetery
- City or Village
- Golf Course
- Library
- Local Park
- NRHP-Eligible Site
- NRHP District
- NRHP-Listed
- State Wildlife Management Area
- School
- Water Body
- 10-Mile Study Area
- Potential Turbine/Blade Visibility
- Project Boundary

Notes:
1. Basemap: ESRI ArcGIS Online "World Topographic Map" map service.
2. This map was generated in ArcMap on January 11, 2018.
3. This is a color graphic. Reproduction in grayscale may misrepresent the data.



www.edrdpc.com



Appendix B

Visually Sensitive Sites Table

Visually Sensitive Resource	Location		VP Number ¹	Distance ²	Distance Zone	Project Visibility		
	Town	County		Miles from Nearest Turbine	<div><div>●</div> Foreground</div> <div><div>●</div> Midground</div> <div><div>●</div> Background</div>	+ Visible	- Not Visible	+/- Partially Visible
						DTM (Topography)	DSM (Topography, Vegetation & Structures)	
Properties and Districts listed in the National or State Register of Historic Places								
Henny Barn	Thompson	Seneca		0.3	<div><div>●</div></div>	+	+/-	
Heter Farm	Thompson	Seneca		0.4	<div><div>●</div></div>	+	+/-	
Tremont House	Lyne	Huron		2.0	<div><div>●</div></div>	+	-	
Pleasant Ridge United Methodist Church and Cemetery	Pleasant, Clinton	Seneca		2.1	<div><div>●</div></div>	+	+/-	
Omar Chapel	Reed	Seneca		3.3	<div><div>●</div></div>	+	+/-	
Umsted Farm	Pleasant	Seneca		3.7	<div><div>●</div></div>	+/-	+/-	
Wright, John, Mansion	Lyne	Huron		3.9	<div><div>●</div></div>	+	-	
McPherson, Maj. Gen James B, House	Green Creek	Sandusky	69	4.3	<div><div>●</div></div>	+	-	
National Orphans' Home Junior Order United American Mechanics	Clinton	Seneca	74	4.5	<div><div>●</div></div>	+/-	+/-	
Hunts Corners Historic District	Lyne	Huron		4.6	<div><div>●</div></div>	+	+/-	
National Home, Daughters of America	Clinton	Seneca		5.5	<div><div>●</div></div>	+	-	
Mull Covered Bridge	Ballville	Sandusky		5.5	<div><div>●</div></div>	+	-	
Hedges-Hunter-Keller-Bacon Gristmill	Clinton	Seneca		6.4	<div><div>●</div></div>	+	-	
Northeast Tiffin Historic District	Clinton	Seneca		6.4	<div><div>●</div></div>	+	-	
Beatty Glass Company	Clinton	Seneca		6.4	<div><div>●</div></div>	+	-	
Hunter, William, House	Clinton	Seneca		6.4	<div><div>●</div></div>	+	-	
Bowman's Distillery	Clinton	Seneca		6.5	<div><div>●</div></div>	+/-	-	
North Sandusky Street Historic District	Clinton	Seneca	75	6.6	<div><div>●</div></div>	+	-	
Mueller Brewery	Clinton	Seneca		6.6	<div><div>●</div></div>	+	-	
Tiffin Art Metal Company	Clinton	Seneca		6.7	<div><div>●</div></div>	+	-	
Founders Hall, Heidelberg College	Clinton	Seneca		6.7	<div><div>●</div></div>	+	-	
Tiffin Agricultural Works	Clinton	Seneca		6.7	<div><div>●</div></div>	+	-	
Mueller, Christ, House	Clinton	Seneca		6.7	<div><div>●</div></div>	+	-	
France Hall	Clinton	Seneca		6.7	<div><div>●</div></div>	+	-	
College Hall	Clinton	Seneca		6.7	<div><div>●</div></div>	+	-	
Octagon, The	Clinton	Seneca		6.7	<div><div>●</div></div>	+	-	
Gerhart-Rust Residence	Clinton	Seneca		6.7	<div><div>●</div></div>	+	-	
President's House	Clinton	Seneca		6.7	<div><div>●</div></div>	+	-	
Williard Hall	Clinton	Seneca		6.7	<div><div>●</div></div>	+/-	-	
Aigler Alumni Building	Clinton	Seneca		6.7	<div><div>●</div></div>	+	-	
Laird Hall	Clinton	Seneca		6.7	<div><div>●</div></div>	+	-	
Great Hall	Clinton	Seneca		6.8	<div><div>●</div></div>	+/-	-	
Pfleiderer Center for Religion and the Humanities	Clinton	Seneca		6.8	<div><div>●</div></div>	+/-	-	
Fort Ball Railroad Historic District	Clinton	Seneca		6.8	<div><div>●</div></div>	+/-	-	
Black Student Union Center	Clinton	Seneca		6.8	<div><div>●</div></div>	+/-	-	

Visually Sensitive Resource	Location		VP Number ¹	Distance ²	Distance Zone	Project Visibility		
				Miles from Nearest Turbine	<div><div>●</div> Foreground</div> <div><div>●</div> Midground</div> <div><div>●</div> Background</div>	+Visible	- Not Visible	+/- Partially Visible
	Town	County				DTM (Topography)	DSM (Topography, Vegetation & Structures)	
Downtown Tiffin Historic District	Clinton	Seneca		6.8	*	+/-	-	
Ohio Lantern Company	Clinton	Seneca		6.8	*	+	-	
Social Science House	Clinton	Seneca		6.8	*	-	-	
Webster Manufacturing	Hopewell, Clinton	Seneca		6.9	*	+/-	-	
Miami Street Grade School	Clinton	Seneca		7.1	*	+	-	
Hanson Machinery Company	Clinton	Seneca		7.1	*	+	-	
Wagner Brothers Bottling Works	Clinton	Seneca		7.3	*	+	-	
Zion Episcopal Church	Ridgefield	Huron		7.6	*	+	-	
Springdale	Clinton	Seneca		7.9	*	+	-	
Brown, Seth, House	Ridgefield	Huron		7.9	*	+	-	
Tiffin Waterworks	Clinton	Seneca		7.9	*	+/-	-	
Hosford, John, House	Ridgefield	Huron		7.9	*	+/-	-	
Bagby--Hossler House	Clinton	Seneca		8.3	*	+/-	-	
Soldiers Memorial Parkway and McKinley Memorial Parkway	Sandusky, Ballville	Sandusky		8.6	*	+	-	
Hayes, Rutherford B, House (Spiegel Grove) (NHL)	Ballville	Sandusky	63	8.6	*	+	-	
Buckland, Ralph P., House	Sandusky	Sandusky		8.9	*	+	-	
Bartlett, Joseph and Rachel, House	Sandusky	Sandusky		8.9	*	+	-	
Fabing, Frederick, House	Sandusky	Sandusky		9.0	*	+	-	
Sandusky County Jail and Sheriff's House	Sandusky	Sandusky		9.1	*	+	-	
St Paul's Episcopal Church	Sandusky	Sandusky		9.1	*	+	-	
Michaels Farm	Liberty	Seneca		9.5	*	+	-	
Properties eligible for inclusion in the National or State Register of Historic Places								
1212-1214 W Main St	York	Sandusky		1.8	●	+	+/-	
.05 mile south of SR 18	Thompson	Seneca		1.9	●	+	+/-	
1567 SR 67	Scipio	Seneca		3.6	*	+	+/-	
131 W Buckeye St	Green Creek	Sandusky		4.4	*	+	-	
56 East Haven St.	Bloom	Seneca		5.7	*	+	-	
River Rd.	Clinton	Seneca		5.7	*	+/-	-	
Huss St., Willow Creek	Clinton	Seneca		5.8	*	+/-	-	
21 Jefferson St	Bloom	Seneca		5.9	*	+	-	
22 Jefferson St	Bloom	Seneca		5.9	*	+	-	
172-174 S Jefferson St	Clinton	Seneca		7.1	*	+	-	
Cor S Washington & Main Sts	Clinton	Seneca		7.2	*	+	-	
14 Madison St	Clinton	Seneca		7.2	*	+	-	
181 South Monroe Street	Clinton	Seneca		7.3	*	+	-	
3309 SR 99	Ridgefield	Huron		7.3	*	+/-	+/-	

Visually Sensitive Resource	Location		VP Number ¹	Distance ² Miles from Nearest Turbine	Distance Zone ● Foreground ● Midground ● Background	Project Visibility + Visible - Not Visible +/- Partially Visible	
	Town	County				DTM (Topography)	DSM (Topography, Vegetation & Structures)
2027 E State St	Ballville	Sandusky		8.3	*	+	+/-
2209 E State St	Ballville	Sandusky		8.3	*	+/-	-
514 Birchard Ave	Sandusky	Sandusky		8.9	*	+	-
US 20 (State Street Bridge)	Sandusky	Sandusky		9.0	*	+/-	-
416 W State St	Sandusky	Sandusky		9.1	*	+	-
1101 N. Front Street	Sandusky	Sandusky		9.6	*	+/-	-
Sandusky County Fairground	Sandusky	Sandusky	60	9.8	*	+/-	+/-
Rawson Ave & Haynes St	Sandusky	Sandusky		9.8	*	+	-
Rawson Ave & Haynes St	Sandusky	Sandusky		9.8	*	+	-
State Parks							
None in Study Area							
National Heritage Areas							
None in Study Area							
National Wildlife Refuges, State Game Refuges and State Wildlife Management Areas							
Wildlife Production Area 62 WMA	Pleasant	Seneca		0.3	●	+	+/-
Knobbs Prairie WMA	Pleasant	Seneca	47	0.6	●	+	+/-
Wildlife Production Area 47 WMA	Pleasant	Seneca		0.8	●	+	+/-
Sugar Creek WMA	Pleasant	Seneca	46	1.1	●	+/-	+/-
Wildlife Production Area 31 WMA	Green Creek	Sandusky		3.5	●	+	+/-
Silver Creek WMA	Bloom	Seneca		6.7	*	+/-	+/-
Wildlife Production Area 64 WMA	Jackson, Liberty	Seneca		8.6	*	+	+/-
Resthaven WMA	Margaretta, Townsend	Sandusky, Erie	1	9.1	*	+	+/-
Millers Blue Hole WMA	Townsend	Sandusky		9.6	*	+	+/-
Pickereel Creek WMA	Riley, Townsend	Sandusky	2, 3, 4, 5, 8, 9	9.9	*	+/-	+/-
National Natural Landmarks							
None in Study Area							
National Parks, Recreation Areas, Seashores and/or Forests							
None in Study Area							
National or State Designated Wild, Scenic, or Recreational Rivers							
Sandusky River	Ballville, Pleasant, Hopewell, Clinton, Seneca	Sandusky, Seneca	36, 73	1.7	●	+/-	+/-
Sites, Areas, Lakes, Reservoirs or Highways Designated or Eligible as Scenic							
None in Study Area							
State and Federally Designated Trails							
Buckeye Trail	Washington, Sandusky, Ballville, Pleasant, Adams, Thompson, Sherman, Peru, Reed, Norwich, Greenfield	Sandusky, Huron, Seneca	36, 54	0.3	●	+/-	+/-
North Coast Inland Trail	Sandusky, Ballville, Green Creek, York, Lyne, Ridgefield	Sandusky, Huron	29, 31	0.8	●	+/-	+/-
State Nature and Historic Preserve Areas							
None in Study Area							
State Historic Markers							
5-39 Henry Morrison Flagler (1830-1913)	York, Lyne	Sandusky, Huron		1.8	●	+	-
5-72 Bishop John Seybert	York	Sandusky		1.9	●	+	-
7-72 Seneca Indian Reservation at Green Springs	Green Creek	Sandusky		3.3	●	+	-

Location				Distance ²	Distance Zone	Project Visibility	
Visually Sensitive Resource	Town	County	VP Number ¹	Miles from Nearest Turbine	<div> <div>●</div> Foreground <div>●</div> Midground <div>●</div> Background </div>	+ Visible - Not Visible +/- Partially Visible	
						DTM (Topography)	DSM (Topography, Vegetation & Structures)
9-721 General James Birdseye McPherson	Green Creek	Sandusky	69	4.4	*	+	-
2-74 Fort Seneca	Clinton	Seneca		5.1	*	+	-
8-74 Camp Noble	Clinton	Seneca		6.5	*	+	-
10-74 State's First Female Lawyer	Clinton	Seneca		7.0	*	+	-
8-72 Spiegel Grove	Sandusky, Ballville	Sandusky		8.8	*	+	-
1-72 Fort Stephenson	Sandusky	Sandusky		9.0	*	+/-	-
2-72 Sandusky County Fairgrounds	Sandusky	Sandusky	60	9.8	*	+	+/-
Locally Important Resources							
Areas of Intensive Land Use (City, Village, Hamlet)							
City of Bellevue	Groton, York, Lyne, Thompson	Sandusky, Erie, Huron	96	0.7	●	+/-	+/-
Village of Republic	Scipio	Seneca	80, 81	1.3	●	+/-	+/-
Village of Green Springs	Green Creek, Adams	Sandusky, Seneca	55, 56	2.3	●	+/-	+/-
City of Clyde	Green Creek, York	Sandusky	67, 68, 69, 70	2.9	●	+/-	+/-
City of Tiffin	Hopewell, Clinton	Seneca	74, 75, 76	4.8	*	+/-	+/-
Village of Bloomville	Bloom	Seneca	84	5.2	*	+/-	+/-
Village of Attica	Venice	Seneca	87	5.5	*	+/-	+/-
Village of Monroeville	Ridgefield	Huron		6.9	*	+/-	+/-
Village of Bettsville	Liberty	Seneca	39, 40	7.1	*	+/-	+/-
City of Fremont	Sandusky, Ballville	Sandusky	28, 29, 31, 33, 34, 57, 58, 59,	8.0	*	+/-	+/-
Village of Burgoon	Jackson	Sandusky		8.5	*	+	+/-
City of Norwalk	Ridgefield	Huron		9.9	*	+/-	+/-
Village of Castalia	Margaretta	Erie	10, 11	9.9	*	-	-
Transportation Corridors							
SR 19	Sandusky, Green Creek, Adams, Scipio, Bloom, Lykens	Sandusky, Seneca, Crawford	50, 54, 55, 56, 82, 84, 85	0.2	●	+/-	+/-
SR 18	York, Adams, Thompson, Hopewell, Clinton, Scipio	Sandusky, Seneca	77, 78	0.3	●	+/-	+/-
SR 162	Scipio, Reed, Norwich, Greenfield	Huron, Seneca	80, 88	0.3	●	+/-	+/-
SR 269	Margaretta, Groton, Lyne, Thompson, Sherman	Sandusky, Erie, Huron, Seneca	11, 12, 89, 90	0.5	●	+/-	+/-
SR 101	Margaretta, Townsend, Green Creek, York, Pleasant, Adams, Clinton	Sandusky, Erie, Seneca	10, 11, 16, 51, 67, 68, 69	0.7	●	+/-	+/-
SR 4	Margaretta, Perkins, Groton, Lyne, Thompson, Sherman, Reed, Venice, Chatfield	Erie, Huron, Seneca, Crawford	87, 89	1.6	●	+/-	+/-
US 20	Washington, Riley, Sandusky, Green Creek, York, Lyne, Ridgefield	Sandusky, Huron	64, 69	1.7	●	+/-	+/-
SR 547	Lyne, Ridgefield, Thompson, Sherman	Huron, Seneca		2.1	●	+/-	+/-
SR 113	Groton, Oxford, Lyne, Ridgefield	Erie, Huron		2.2	●	+/-	+/-
US 224	Hopewell, Clinton, Scipio, Reed, Eden, Bloom, Venice, Richmond, New Haven	Huron, Seneca	83, 87	3.3	●	+/-	+/-
SR 53	Sandusky, Ballville, Pleasant, Hopewell, Clinton, Seneca	Sandusky, Seneca	23, 43, 57, 60, 75	3.5	●	+/-	+/-
SR 510	Riley, Green Creek	Sandusky	65, 66	4.4	*	+/-	+/-
I 80	Washington, Riley, Townsend, Sandusky, Groton, Oxford	Sandusky, Erie	16, 17, 19, 20	6.3	*	+/-	+/-

Visually Sensitive Resource	Location		VP Number ¹	Distance ² Miles from Nearest Turbine	Distance Zone ● Foreground ● Midground ● Background	Project Visibility + Visible - Not Visible +/- Partially Visible	
	Town	County				DTM (Topography)	DSM (Topography, Vegetation & Structures)
SR 100	Clinton, Eden, Lykens	Seneca, Crawford		6.5	*	+/-	+/-
SR 12	Jackson, Ballville, Liberty	Sandusky, Seneca	37, 38, 39, 40	6.5	*	+/-	+/-
SR 99	Groton, Oxford, Ridgefield, Peru, Greenfield, New Haven	Erie, Huron		7.0	*	+/-	+/-
SR 590	Washington, Jackson, Liberty	Sandusky, Seneca	39	7.5	*	+/-	+/-
SR 412	Riley, Townsend, Sandusky	Sandusky	14, 15, 18, 21	7.5	*	+/-	+/-
US 20 Bus	Sandusky, Ballville, Green Creek	Sandusky	62	8.0	*	+/-	+/-
US 6	Margaretta, Washington, Riley, Townsend, Sandusky, Jackson, Ballville	Sandusky, Erie	2, 3, 4, 8, 9, 22	9.4	*	+/-	+/-
Recreation Resources							
<i>Local Parks and Playgrounds</i>							
Seneca County Park District Conservation Easement	Pleasant	Seneca		1.9	●	+/-	-
Sandusky Abbotts Bridge Scenic River Access	Pleasant	Seneca	44	2.4	●	+/-	+/-
Cherry Street Park	Green Creek	Sandusky		4.1	*	+	-
Clyde Community Park	Green Creek	Sandusky	70	4.2	*	+/-	+/-
Paden Park	Green Creek	Sandusky		4.3	*	+/-	-
Sandusky Izaak Walton Scenic River Access	Clinton	Seneca	73	4.3	*	+/-	-
Gus Wolf Park	Green Creek	Sandusky		4.5	*	+/-	-
Sandusky Wolf Creek Scenic River Access	Ballville	Sandusky	36	4.8	*	+/-	-
Wickwire-Shade Preserve	Reed	Seneca		5.0	*	+/-	+/-
Junior Home Park	Clinton	Seneca		5.7	*	+/-	-
Kernan Park	Clinton	Seneca		5.8	*	+/-	-
Nature Trails Park	Clinton	Seneca		5.8	*	+/-	-
Kimball Park	Bloom	Seneca		5.9	*	+	-
Oakley Park	Clinton	Seneca		6.0	*	+	-
Apple-Jack Park	Clinton	Seneca	76	6.7	*	+	-
Hedges-Boyer Park	Clinton	Seneca		6.8	*	+/-	-
Conner Park	Ballville	Sandusky		6.8	*	+	+/-
Hedges Park	Clinton	Seneca		7.0	*	+/-	-
Ells Park	Liberty	Seneca		7.4	*	+/-	-
Legion Park	Clinton	Seneca		7.6	*	+	-
Beechwood Park	Hopewell	Seneca		7.8	*	+	-
East Side Park	Ballville	Sandusky	28, 29	8.0	*	+/-	-
County Fairgrounds	Hopewell	Seneca		8.1	*	+	-
Roger Young Memorial Park	Ballville	Sandusky	33	8.1	*	+/-	-
Robert L Walsh Memorial Park	Ballville	Sandusky	31	8.1	*	+/-	+/-
Riverview Park	Hopewell	Seneca		8.4	*	+	-
Swartzlander-Rotary Park	Sandusky, Ballville	Sandusky		8.7	*	+/-	-
Richard D. Maier Park	Sandusky	Sandusky		8.9	*	+	-
Castalia Quarry Reserve	Margaretta	Erie	13	9.0	*	+/-	+/-

Visually Sensitive Resource	Location		VP Number ¹	Distance ² Miles from Nearest Turbine	Distance Zone ● Foreground ● Midground ● Background	Project Visibility		
	Town	County				+ Visible	- Not Visible	+/- Partially Visible
						DTM (Topography)	DSM (Topography, Vegetation & Structures)	
Birchard Park	Sandusky	Sandusky		9.0	*	+	-	
Tschumy Corner	Sandusky	Sandusky		9.1	*	+	-	
Darr-Root Fishing Access	Sandusky	Sandusky		9.5	*	+/-	-	
Blue Heron Reserve	Riley, Townsend	Sandusky	2, 4, 6, 7	9.7	*	+/-	+/-	
Countryside Park	Sandusky	Sandusky	24, 25	9.9	*	+	+/-	
<i>Trails and Bike Routes</i>								
Highway 30A Bike Route	Margaretta, Riley, Townsend, Sandusky, Grolton	Sandusky, Erie	14, 15, 18, 21	7.5	*	+/-	+/-	
<i>Water Resources</i>								
Morrison Creek	Clinton, Scipio, Reed	Seneca		0.0	●	+/-	+/-	
Pickereel Creek	Riley, Townsend, York	Sandusky		0.3	●	+/-	+/-	
Sugar Creek	Pleasant, Adams, Scipio	Seneca		0.3	●	+/-	+/-	
Indian Creek	Ballville, Pleasant	Sandusky, Seneca		0.3	●	+/-	+/-	
Albright Ditch	Adams, Thompson	Seneca		0.5	●	+	+/-	
Owl Creek	Adams	Seneca		0.6	●	+	+/-	
Raccoon Creek	Riley, Green Creek, York, Thompson	Sandusky, Seneca		0.6	●	+/-	+/-	
Frink Run	Lyne, Ridgefield, Thompson, Sherman, Peru, Reed	Huron, Seneca		1.0	●	+/-	+/-	
Beaver Creek	Pleasant, Adams	Seneca	54	1.1	●	+/-	+/-	
Megginsett Creek	Lyne, Thompson, Sherman	Huron, Seneca		1.1	●	+/-	+/-	
Green Creek	Riley, Ballville, Green Creek, Pleasant	Sandusky, Seneca		1.4	●	+/-	+/-	
Emerson Creek	Adams, Thompson	Seneca		1.5	●	+/-	+/-	
Sandusky River	Riley, Sandusky, Ballville, Pleasant, Hopewell, Clinton, Seneca, Eden	Sandusky, Seneca	34, 36	1.6	●	+/-	+/-	
Bellevue Reservoir Number Four	Lyne	Huron		1.7	●	+	+/-	
Rock Creek	Clinton, Scipio, Eden	Seneca		1.8	●	+/-	+/-	
Bellevue Upground Reservoir Number One	Lyne	Huron		1.9	●	+	+/-	
Spicer Creek	Pleasant, Clinton, Scipio	Seneca		1.9	●	+/-	+/-	
Bellevue Upground Reservoir Number Three	Lyne	Huron		2.0	●	+	+/-	
Beaver Creek Upground Reservoir	Adams	Seneca	52, 53	2.2	●	+	+/-	
East Branch Rock Creek	Scipio, Eden, Bloom	Seneca		2.5	●	+/-	+/-	
Bark Creek	Riley, Sandusky, Ballville, Pleasant	Sandusky, Seneca	25	2.8	●	+/-	+/-	
Honey Creek	Hopewell, Clinton, Eden, Bloom, Venice, Richmond	Huron, Seneca, Crawford		3.5	●	+/-	+/-	
Bellevue Reservoir	Lyne, Sherman	Huron		3.7	*	+	+/-	
Raccoon Creek Upground Reservoir	Green Creek	Sandusky		3.8	*	+	+/-	
South Creek	Riley, Green Creek	Sandusky		3.8	*	+/-	+/-	
Flag Run	Green Creek	Sandusky		3.8	*	+/-	+/-	
East Branch Wolf Creek	Ballville, Liberty, Pleasant, Hopewell, Seneca	Sandusky, Seneca		4.1	*	+/-	+/-	
Fuller Creek	Riley, Townsend, York	Sandusky		4.2	*	+/-	+/-	
Seymour Creek	Lyne, Ridgefield	Huron		4.6	*	+/-	+/-	
Strong Creek	Riley, Townsend, York	Sandusky		4.6	*	+/-	+/-	
Ferguson Ditch	Sandusky, Ballville	Sandusky	30	4.6	*	+/-	+/-	

Visually Sensitive Resource	Location		VP Number ¹	Distance ² Miles from Nearest Turbine	Distance Zone ● Foreground ● Midground ● Background	Project Visibility		
						+ Visible	- Not Visible	+/- Partially Visible
	Town	County	DTM (Topography)	DSM (Topography, Vegetation & Structures)				
Willow Creek	Clinton, Scipio	Seneca		4.7	*	+/-	+/-	
Snuff Creek	Liberty, Hopewell	Seneca		4.8	*	+/-	+/-	
Little Raccoon Creek	Riley, Green Creek	Sandusky	18, 65	5.3	*	+/-	+/-	
Mills Creek	Margaretta, Perkins, Groton	Erie		5.3	*	+/-	+/-	
Wolf Creek	Jackson, Ballville, Liberty	Sandusky, Seneca		5.7	*	+/-	+/-	
East Branch East Branch Wolf Creek	Hopewell, Seneca	Seneca		6.3	*	+/-	+/-	
Pipe Creek	Perkins, Groton, Oxford	Erie		7.0	*	+/-	+/-	
Silver Creek	Eden, Bloom, Chatfield	Seneca, Crawford		7.3	*	+/-	+/-	
Huron River	Oxford, Ridgefield, Peru, Greenfield, New Haven	Erie, Huron		7.6	*	+/-	+/-	
Gibson Creek	Clinton	Seneca		7.7	*	+/-	-	
Middle Branch Wolf Creek	Hopewell, Seneca	Seneca		8.0	*	+/-	+/-	
Muskellange Creek	Washington, Sandusky, Jackson	Sandusky, Seneca		8.4	*	+/-	+/-	
Bass Lake	Norwich, Greenfield	Huron		8.6	*	+/-	-	
East Branch Huron River	Ridgefield, Peru	Erie, Huron		9.4	*	+/-	+/-	
Brokenknife Creek	Venice, Richmond, Chatfield	Huron, Seneca, Crawford		9.6	*	+/-	+/-	
Golf Courses								
Twin Lake Golf Course	York	Sandusky		1.0	●	+	+/-	
Green Hills Golf Course	Green Creek	Sandusky		2.8	●	+/-	+/-	
Clinton Heights Golf Course	Clinton	Seneca		4.4	*	+/-	+/-	
Sleepy Hollow Golf Course	Townsend, York	Sandusky		4.9	*	+/-	+/-	
Nature Trails Golf Course	Liberty	Seneca		7.8	*	+/-	+/-	
River Cliff Golf Course	Ballville	Sandusky	32	7.9	*	+/-	-	
Fremont Country Club	Sandusky, Ballville	Sandusky		8.2	*	+/-	+/-	
Woussickett Golf Course	Perkins, Oxford	Erie		9.6	*	+/-	-	
Mohawk Golf Club	Eden	Seneca		9.9	*	+/-	-	
Sycamore Hills Golf Course	Washington, Sandusky, Ballville	Sandusky		9.9	*	+/-	-	
Schools and Colleges								
Bellevue High School	York	Sandusky		2.3	●	+	+/-	
Bellevue Middle School	Lyne	Huron		2.7	●	+	+/-	
Green Springs Elementary School	Green Creek	Sandusky		3.2	●	+	-	
Bellevue Elementary School	Groton	Erie		3.3	●	+	+/-	
McPherson Middle School	Green Creek	Sandusky		3.3	●	+	+/-	
Clyde Elementary School	Green Creek	Sandusky	68	4.0	*	+	-	
Clyde High School	Green Creek	Sandusky		4.2	*	+	+/-	
Lincoln Elementary School	Clinton	Seneca		6.3	*	+	-	
Noble Elementary School	Clinton	Seneca		6.4	*	+	-	
Heidelberg University	Clinton	Seneca		6.6	*	+/-	+/-	
Tiffin University	Hopewell, Clinton	Seneca		7.0	*	+/-	+/-	
Calvert High School	Clinton	Seneca		7.0	*	+	-	
Columbian High School	Clinton	Seneca		7.4	*	+/-	-	
Washington Elementary School	Hopewell	Seneca		7.4	*	+	-	

Location				Distance ²	Distance Zone	Project Visibility	
Visually Sensitive Resource	Town	County	VP Number ¹	Miles from Nearest Turbine	<div> <div>●</div> Foreground <div>●</div> Midground <div>●</div> Background </div>	+ Visible	- Not Visible
						DTM (Topography)	DSM (Topography, Vegetation & Structures)
Monroe Jr./Sr. High School	Ridgefield	Huron		7.6	*	+/-	-
Monroe Elementary School	Ridgefield	Huron		7.6	*	+/-	-
Krout Elementary School	Clinton	Seneca		7.7	*	+/-	-
Clinton Middle School	Clinton	Seneca		7.7	*	+	-
Sentinel Vocational Center	Clinton	Seneca		8.0	*	+	-
Lutz Elementary School	Ballville	Sandusky		8.2	*	+	-
Atkinson Elementary School	Ballville	Sandusky	27	8.3	*	+	-
Sacred Heart Elementary School	Ballville	Sandusky		8.4	*	+	-
Hayes Elementary School	Sandusky, Ballville	Sandusky		8.8	*	+	-
Croghan Elementary School	Sandusky	Sandusky	26	9.0	*	+	-
St Joseph Central Catholic High School	Sandusky	Sandusky		9.1	*	+	-
St Joseph Elementary School	Sandusky	Sandusky		9.1	*	+	-
St Ann School	Sandusky	Sandusky		9.3	*	+	-
Stamm Elementary School	Sandusky	Sandusky	61	9.8	*	+	-
Otis Elementary School	Sandusky	Sandusky		9.9	*	+	-
Libraries							
Bellevue Public Library	Lyne	Huron		2.0	●	+	+/-
Green Springs Memorial Library	Green Creek	Sandusky		3.1	●	+	-
Clyde Public Library	Green Creek	Sandusky		4.4	*	+	-
Bliss Memorial Public Library	Bloom	Seneca	84	5.8	*	+	-
Seneca East Public Library	Venice	Seneca		5.9	*	+	-
Tiffin-Seneca Public Library	Clinton	Seneca		6.9	*	+	-
Beltsville Public Library	Liberty	Seneca	40	7.6	*	+	-
Monroeville Public Library	Ridgefield	Huron		8.0	*	+	-
Birchard Public Library	Sandusky	Sandusky		9.0	*	+/-	-
Airports							
Sandusky County Regional Airport	Green Creek	Sandusky		5.2	*	+	+/-
Fremont Airport	Ballville	Sandusky		8.6	*	+/-	-
Seneca County Airport	Hopewell	Seneca		8.8	*	+/-	+/-
Hospitals							
Bellevue Hospital	York	Sandusky		1.8	●	+	+/-
Memorial Hospital	Ballville	Sandusky		8.6	*	+	-
Cemeteries							
Clay-Grosocost Cemetery	Scipio	Seneca		0.4	●	+	+/-
Bunker Hill Cemetery	Pleasant	Seneca		0.4	●	+	+/-
Reformed Church Cemetery (1)	Scipio	Seneca		0.5	●	+	+/-
Payne Cemetery	Adams	Seneca		0.7	●	+	+

Location				Distance ²	Distance Zone	Project Visibility	
						+ Visible	- Not Visible +/- Partially Visible
Visually Sensitive Resource	Town	County	VP Number ¹	Miles from Nearest Turbine	<div> <div>●</div> Foreground <div>●</div> Midground <div>●</div> Background </div>	DTM (Topography)	DSM (Topography, Vegetation & Structures)
Block Cemetery	Adams	Seneca		0.7	●	+	+/-
McKeen-Watson Cemetery	Pleasant	Seneca		0.8	●	+	+/-
Flat Rock Cemetery	Thompson	Seneca		0.8	●	+	+/-
Assumption Cemetery	Reed	Seneca		0.9	●	+	+/-
Adams Lutheran-Zion Lutheran Cemetery	Adams	Seneca		0.9	●	+	+/-
Gilbert Cemetery	York	Sandusky		0.9	●	+	+/-
Coffman Cemetery	Adams	Seneca		0.9	●	+	+/-
Gerhardstein-Golden Hill Cemetery	York	Sandusky		1.0	●	+	+/-
Lowell Cemetery	Adams	Seneca		1.1	●	+	+/-
York Free Chapel Cemetery	York	Sandusky		1.1	●	+	+/-
Thompson Cemetery	Thompson	Seneca		1.2	●	+	+/-
Armstrong Cemetery	Reed	Seneca		1.2	●	+	+/-
Fireside Cemetery	Thompson	Seneca		1.4	●	+	+/-
Bellevue Cemetery	Lyne	Huron		1.4	●	+/-	+/-
Saint Michaels Cemetery	Thompson	Seneca	92	1.4	●	+	+/-
Union Cemetery	Adams	Seneca		1.5	●	+	+/-
Saint Paul United Church of Christ Cemetery	York	Sandusky		1.6	●	+	-
Saint Jacobs Cemetery	Adams	Seneca		1.6	●	+	+/-
Saint Pauls Cemetery	Lyne	Huron		1.6	●	+	+/-
Underhill Cemetery	Thompson	Seneca		1.7	●	+	+
Farewell Retreat Cemetery	Scipio	Seneca		2.0	●	+	+/-
Egbert-Pleasant Ridge Cemetery	Pleasant, Clinton	Seneca		2.1	●	+	+/-
Claggett Cemetery	Pleasant	Seneca		2.1	●	+	-
Pleasant Union Cemetery	Pleasant	Seneca		2.4	●	+/-	+/-
Birdseye Cemetery	York	Sandusky		2.8	●	+	+
Sparrow Farm Cemetery	Lyne	Huron		2.9	●	+	+
Scipio Township Cemetery	Scipio	Seneca		2.9	●	+	+/-
Green Springs Cemetery	Green Creek	Sandusky		3.0	●	+	-
Raymond Cemetery	Adams	Seneca		3.1	●	+	+/-
Omar Cemetery	Reed	Seneca		3.2	●	+	+/-
Tuttle Cemetery	Green Creek	Sandusky		3.2	●	+	-
Meyer-Zimmerman Cemetery	Reed	Seneca		3.3	●	+	+
Lay Cemetery	Green Creek, Adams	Sandusky, Seneca		3.5	●	+	+/-
Wales Corners Cemetery	York	Sandusky		3.5	●	+	+/-
Jones-Sherman Farm Cemetery	Sherman	Huron		3.6	●	+	+/-
Colwell Cemetery	Green Creek	Sandusky		3.6	●	+	-
Trinity Episcopal Cemetery	Lyne	Huron		3.9	●	+	+/-
Decker Cemetery	Ballville	Sandusky		3.9	●	+	+/-
Ames Cemetery	York	Sandusky		4.0	●	+	+/-
Clinton Heights Golf Course Cemetery	Clinton	Seneca		4.1	●	+	+/-
McPherson Cemetery	Green Creek	Sandusky	69	4.1	●	+/-	+/-
Saint Sebastian Catholic Cemetery	Sherman	Huron		4.2	●	+	+/-
Strong's Ridge-Lymes Grange Cemetery	Lyne	Huron		4.2	●	+	+/-
Dunkard Cemetery	Bloom	Seneca		4.5	●	+	+/-
Ellsworth Cemetery	York	Sandusky		4.5	●	+	+/-

Visually Sensitive Resource	Location		VP Number ¹	Distance ² Miles from Nearest Turbine	Distance Zone ● Foreground ● Midground ● Background	Project Visibility		
						+ Visible	- Not Visible	+/- Partially Visible
		Town	County				DTM (Topography)	DSM (Topography, Vegetation & Structures)
Saint Marys Catholic Cemetery	Green Creek	Sandusky		4.6	*	+	-	
Avery-Wickwire Cemetery	York	Sandusky		4.6	*	+	+/-	
Kleinoeder Family Cemetery	York	Sandusky		4.6	*	+	+/-	
Fravel Cemetery	Pleasant	Seneca		4.7	*	+	+/-	
Seneca John Monument Cemetery	Green Creek	Sandusky		4.8	*	+	-	
Bloomville Cemetery	Bloom	Seneca		4.8	*	+	-	
Hill Cemetery	Ballville	Sandusky		4.9	*	+	-	
Heyman-Hunts Corners-Sutton Cemetery	Lyne	Huron		5.0	*	+	+/-	
Boughton Cemetery	Norwich	Huron		5.1	*	+	+/-	
Shiloh Cemetery	Liberty	Seneca		5.2	*	+	-	
Reformed Church Cemetery (2)	Bloom	Seneca		5.6	*	+/-	+/-	
Lyme Cemetery	Lyne, Ridgefield	Huron		5.7	*	+	+	
Bakertown Cemetery	Green Creek	Sandusky		5.7	*	+	+/-	
McGormley Cemetery	Ballville	Sandusky		5.7	*	+	+/-	
Saint Peter and Paul Cemetery	Venice	Seneca		5.8	*	+	+/-	
Fairmont Cemetery	Clinton	Seneca		5.8	*	+	+/-	
Saint Marys Cemetery (2)	Clinton	Seneca		5.9	*	+	+/-	
Wurts Cemetery	Norwich	Huron		5.9	*	+	+	
Woodlawn Cemetery	Bloom	Seneca		5.9	*	+/-	+/-	
Hite-Wolf Creek-Hite Town Cemetery	Jackson	Sandusky		6.1	*	+	-	
State Hospital Cemetery	Clinton	Seneca		6.3	*	+	-	
Mennonite Cemetery	Bloom	Seneca		6.3	*	+	+/-	
Deyo Cemetery	Groton	Erie		6.3	*	+/-	+/-	
Parkhurst Cemetery	Townsend	Sandusky		6.5	*	+	+/-	
Caroline Lutheran Cemetery	Venice	Seneca		6.5	*	+	-	
Halters Cemetery	Ballville	Sandusky		6.5	*	+	-	
East Caroline Reformed Cemetery	Venice	Seneca		6.6	*	+	-	
Crissa Cemetery	Liberty	Seneca		6.6	*	+	+/-	
Greenlawn Memory Gardens	Green Creek	Sandusky		6.7	*	+/-	+/-	
Pontiac-Saint Peters Lutheran Cemetery	Peru	Huron		6.8	*	+	-	
Mount Lebanon Cemetery	Ballville	Sandusky		6.8	*	+	+/-	
Unidentified Cemetery #1	Venice	Seneca		6.8	*	+	-	
Fuller Cemetery	Townsend	Sandusky		6.9	*	+	-	
North Monroeville Cemetery	Ridgefield	Huron		6.9	*	+	-	
Greenlawn Cemetery	Clinton	Seneca		7.0	*	+/-	+/-	
Wilson Cemetery	Peru	Huron		7.1	*	+	-	
Littlefield Farm Cemetery	Ridgefield	Huron		7.2	*	+	-	
Saint Stephens Cemetery	Bloom	Seneca		7.3	*	+	+/-	
Rock Creek Cemetery (2)	Eden	Seneca		7.4	*	+/-	-	
Feaselburg Cemetery	Liberty	Seneca		7.5	*	+	+/-	
Bloom Township Cemetery	Bloom	Seneca		7.5	*	+	-	

Visually Sensitive Resource	Location		VP Number ¹	Distance ² Miles from Nearest Turbine	Distance Zone ● Foreground ● Midground ● Background	Project Visibility + Visible - Not Visible +/- Partially Visible		
	Town	County				DTM (Topography)	DSM (Topography, Vegetation & Structures)	
Riley Cemetery	Riley	Sandusky		7.5	*	+	+	
Old Saint Joseph Catholic Cemetery	Ridgefield	Huron		7.6	*	+	-	
Tew Cemetery	Townsend	Sandusky		7.6	*	+/-	+/-	
Liberty Township-Beltsville Cemetery	Liberty	Seneca		7.6	*	+	-	
Dana Cemetery Sandusky	Green Creek	Sandusky		7.7	*	+	-	
Saint Francis Cemetery	Clinton	Seneca		7.9	*	+	-	
Oakwood Cemetery	Ballville	Sandusky		8.0	*	+/-	-	
Beeler Cemetery	Riley	Sandusky		8.0	*	+	+/-	
Saint Josephs Cemetery	Clinton	Seneca		8.0	*	+	-	
St. Joseph's Cemetery	Ballville	Sandusky		8.0	*	+/-	-	
Higley Farm Cemetery	Richmond	Huron		8.1	*	+	+	
Our Lady of the Pines Cemetery	Ballville	Sandusky		8.1	*	+	-	
Smith Cemetery (2)	Venice	Seneca		8.2	*	+	+/-	
Riverside Cemetery	Ridgefield	Huron		8.2	*	+/-	-	
Graves Cemetery	Margaretta	Erie		8.2	*	+/-	-	
Hopewell Cemetery	Hopewell	Seneca		8.3	*	+	+/-	
Saint Joseph Cemetery	Ridgefield	Huron		8.3	*	+	-	
Centerton Cemetery	Norwich	Huron		8.4	*	+/-	-	
Rock Creek Cemetery (1)	Eden	Seneca		8.5	*	+/-	+/-	
Pleasant View-Primitive Baptist Cemetery	Bloom	Seneca		8.6	*	+	+/-	
Whittlesey Cemetery	Ballville	Sandusky		8.6	*	+	-	
Hayes Cemetery	Ballville	Sandusky		8.7	*	+	-	
Bethel-Richmond Township Cemetery	Richmond	Huron		8.8	*	+	+/-	
Lower Sandusky First-Old French Cemetery	Sandusky	Sandusky		8.9	*	+	-	
County Home Cemetery	Eden	Seneca		9.0	*	+	-	
British Graves Site 1	Sandusky	Sandusky		9.0	*	+	-	
Major George Croghan Cemetery	Sandusky	Sandusky		9.0	*	+	-	
Ludwig Cemetery	Jackson	Sandusky		9.0	*	+	+/-	
Saint Marys Cemetery (1)	Jackson	Sandusky		9.1	*	+/-	+/-	
British Graves Site 2	Sandusky	Sandusky		9.1	*	+	-	
Creeger Cemetery	Hopewell	Seneca		9.2	*	+	-	
Schook-Weiker Cemetery	Riley	Sandusky		9.2	*	+/-	+/-	
Sandhill Cemetery	Margaretta	Erie		9.3	*	+/-	+/-	
Vantine Cemetery	Peru	Huron		9.3	*	+	-	
Peru Center-School House Cemetery	Peru	Huron		9.3	*	+	-	
Null Cemetery	Liberty	Seneca		9.3	*	+	+/-	
Page Farm Cemetery	Ridgefield	Huron		9.4	*	+	+	
Pipe Creek Cemetery	Oxford	Erie		9.6	*	+	-	
Smith Cemetery (1)	Jackson	Sandusky		9.6	*	+	+/-	

Location				Distance ²	Distance Zone	Project Visibility	
						+ Visible	- Not Visible +/- Partially Visible
Visually Sensitive Resource	Town	County	VP Number ¹	Miles from Nearest Turbine	<div> <div>●</div> Foreground <div>●</div> Midground <div>●</div> Background </div>	DTM (Topography)	DSM (Topography, Vegetation & Structures)
Randall Cemetery	Eden	Seneca		9.6	*	+/-	-
Adams Farm Cemetery	Peru	Huron		9.6	*	+/-	-
Contreras Cemetery	Riley	Sandusky		9.7	*	+	+
Saint Andrews Cemetery	Liberty	Seneca		9.7	*	+	+/-
Liberty Cemetery	Liberty	Seneca		9.7	*	+	+/-
Daniels-McCreery Farm-Tuttle-Minier Cemetery	Riley	Sandusky		9.7	*	+	-
Burgan Cemetery	Riley	Sandusky		9.8	*	+	+
White Chapel Cemetery	Eden	Seneca		9.8	*	+	-
West Farm Burying Ground-Old Alonzo West Cemetery	Peru	Huron		9.9	*	+	-
County Home Cemetery	Sandusky	Sandusky		9.9	*	+/-	+/-
Webb Cemetery	Ridgefield	Huron		9.9	*	+	-
Kansas Cemetery	Liberty	Seneca		9.9	*	+	+/-

¹ If no viewpoint (VP) number is indicated, no photo was obtained during fieldwork.

² For large areas and linear sites, approximate distance to the nearest turbine was measured from the respective area's closest point.

Appendix C

Photo Log



Viewpoint 1

View from Resthaven Wildlife Area - Parking Area

looking South/Southwest

Township of Townsend



Viewpoint 2

View from Pickeral Creek Wildlife Area - Main Entrance

looking South/Southwest

Township of Riley

Republic Wind Farm

Sandusky and Seneca Counties, Ohio

Appendix C: Photo Log Sheet 1 of 49





Viewpoint 3

View from Pickeral Creek -
Water Access

looking South

Township of Riley



Viewpoint 4

View from Blue Heron
Reserve Gateway Sign - Not
in Direction of Project

looking West

Township of Riley

Republic Wind Farm

Sandusky and Seneca Counties, Ohio

Appendix C: Photo Log Sheet 2 of 49





Viewpoint 5

View from Pickeral Creek
Wildlife Area, Donald
Thompson Wetland - Viewing
Platform

looking South/Southeast

Township of Townsend



Viewpoint 6

View from Blue Heron
Reserve Nature Trails -
Parking Area

looking South

Township of Riley

Republic Wind Farm

Sandusky and Seneca Counties, Ohio

Appendix C: Photo Log Sheet 3 of 49





Viewpoint 7

View from Blue Heron
Reserve Nature Trails -
Boardwalk

looking South/Southeast

Township of Riley



Viewpoint 8

View from Pickeral Creek
Wildlife Area - Parking, West

looking South

Township of Townsend

Republic Wind Farm

Sandusky and Seneca Counties, Ohio

Appendix C: Photo Log Sheet 4 of 49





Viewpoint 9

View from Pickeral Creek
Wildlife Area - Parking East

looking South/Southwest

Township of Townsend



Viewpoint 10

View from Village of Castalia,
SR 269 at Cold Creek
Crossing

looking Southwest

Township of Margaretta

Republic Wind Farm

Sandusky and Seneca Counties, Ohio

Appendix C: Photo Log Sheet 5 of 49





Viewpoint 11

View from Village of Castalia,
Intersection of SR 269 and
SR 101 - Not in Direction of
Project

looking East

Township of Margareta



Viewpoint 12

View from SR 269 South of
Village of Castalia

looking Southwest

Township of Margareta

Republic Wind Farm

Sandusky and Seneca Counties, Ohio

Appendix C: Photo Log Sheet 6 of 49





Viewpoint 13

View from Castalia Quarry Reserve - Loop Trail

looking Southwest

Township of Margaretta



Viewpoint 14

View from SR 412 - Scherz Ditch

looking South/Southeast

Township of Townsend

Republic Wind Farm

Sandusky and Seneca Counties, Ohio

Appendix C: Photo Log Sheet 7 of 49





Viewpoint 15

View from SR 412 - East of
SR 302

looking South

Township of Townsend



Viewpoint 16

View from SR 101 at I80 and
I90 Overpass

looking South/Southwest

Township of Townsend

Republic Wind Farm

Sandusky and Seneca Counties, Ohio

Appendix C: Photo Log Sheet 8 of 49





Viewpoint 17

View from SR 268/Vickery Rd
at I80 and I90 Overpass

looking South/Southwest

Township of Townsend



Viewpoint 18

View from SR 412 at Little
Raccoon Creek

looking Southwest

Township of Riley

Republic Wind Farm

Sandusky and Seneca Counties, Ohio

Appendix C: Photo Log Sheet 9 of 49





Viewpoint 19

View from SR 238/Gibbs
Road at I80 and I90 Overpass

looking South

Township of Riley



Viewpoint 20

View from SR 222/Shiets
Road at I80 and I90 Overpass

looking South

Township of Riley

Republic Wind Farm

Sandusky and Seneca Counties, Ohio

Appendix C: Photo Log Sheet 10 of 49





Viewpoint 21

View from SR 412 at North Shock Road

looking South/Southwest

Township of Riley



Viewpoint 22

View from US 6 and NO CO Rd 198

looking South/Southwest

Township of Riley

Republic Wind Farm

Sandusky and Seneca Counties, Ohio

Appendix C: Photo Log Sheet 11 of 49





Viewpoint 23

View from SR 53 - North of
Fremont

looking South/Southeast

Township of Sandusky



Viewpoint 24

View from Countryside Park -
Trail Network

looking East

Township of Sandusky

Republic Wind Farm

Sandusky and Seneca Counties, Ohio

Appendix C: Photo Log Sheet 12 of 49





Viewpoint 25

View from Countryside Park -
Gazebo

looking East

Township of Sandusky



Viewpoint 26

View from Croghan
Elementary School - Parking
Lot

looking East

Township of Sandusky

Republic Wind Farm

Sandusky and Seneca Counties, Ohio

Appendix C: Photo Log Sheet 13 of 49





Viewpoint 27

View from Atkinson
Elementary School -
Recreational Area

looking South/Southeast

Township of Ballville



Viewpoint 28

View from Fremont
Community Recreation
Complex

looking South

Township of Ballville

Republic Wind Farm

Sandusky and Seneca Counties, Ohio

Appendix C: Photo Log Sheet 14 of 49





Viewpoint 29

View from Biggs-Kettner
Memorial East Side Park/
North Coast Inland Trail

looking Southeast

Township of Ballville



Viewpoint 30

View from SR 221 at
Ferguson Ditch

looking Southeast

Township of Ballville

Republic Wind Farm

Sandusky and Seneca Counties, Ohio

Appendix C: Photo Log Sheet 15 of 49





Viewpoint 31

View from Robert L. Walsh Memorial Park, Entrance to North Coast Inland Trail

looking South/Southeast

Township of Ballville



Viewpoint 32

View from River Cliff Golf Course - Parking Lot Side Club House

looking South/Southeast

Township of Ballville

Republic Wind Farm

Sandusky and Seneca Counties, Ohio

Appendix C: Photo Log Sheet 16 of 49





Viewpoint 33

View from Roger Young
Memorial Park - Base Ball/
Soft Ball Parking Area

looking South/Southeast

Township of Ballville



Viewpoint 34

View from Roger Young
Memorial Park, Rotary Way,
Entrance to North Coast
Inland Trail

looking South/Southeast

Township of Ballville

Republic Wind Farm

Sandusky and Seneca Counties, Ohio

Appendix C: Photo Log Sheet 17 of 49





Viewpoint 35

View from SR 209 at
Sandusky Scenic River
Access

looking South/Southeast

Township of Ballville



Viewpoint 36

View from Sandusky Scenic
River Access at Wolf Creek
Park

looking Southeast

Township of Ballville

Republic Wind Farm

Sandusky and Seneca Counties, Ohio

Appendix C: Photo Log Sheet 18 of 49



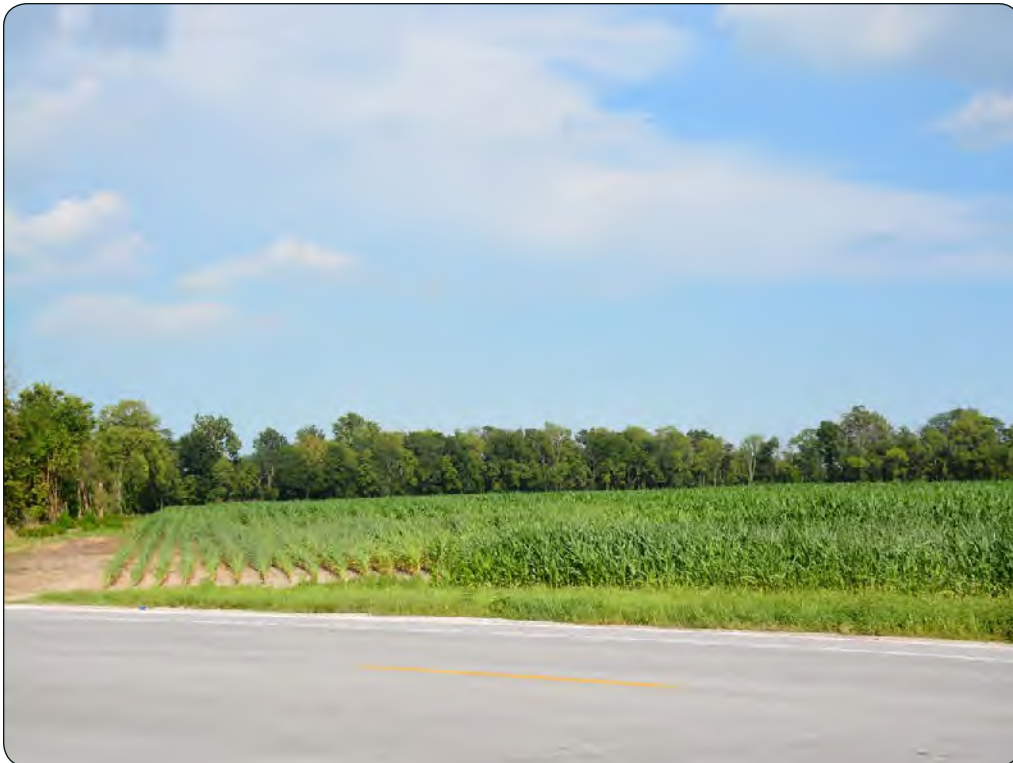


Viewpoint 37

View from SR 12/State Street
at Intersection with Township
Line Road

looking Southeast

Township of Ballville



Viewpoint 38

View from SR 12/State Street
at Intersection with Seneca
County Line Road

looking East/Southeast

Township of Liberty

Republic Wind Farm

Sandusky and Seneca Counties, Ohio

Appendix C: Photo Log Sheet 19 of 49





Viewpoint 39

View from Bettsville Center
at Intersection of SR 12/State
Street and Union Street

looking East

Township of Liberty



Viewpoint 40

View from Front Sidewalk at
Bettsville Public Library

looking Northeast

Township of Liberty

Republic Wind Farm

Sandusky and Seneca Counties, Ohio

Appendix C: Photo Log Sheet 20 of 49





Viewpoint 41

View from Ells Park - Parking Area

looking East/Southeast

Township of Liberty



Viewpoint 42

View from View of Industrial Facility on West County Road 30 - No Sim

looking East/Southeast

Township of Liberty

Republic Wind Farm

Sandusky and Seneca Counties, Ohio

Appendix C: Photo Log Sheet 21 of 49





Viewpoint 43

View from SR 53 at Fort Seneca Historic Marker

looking East/Southeast

Township of Pleasant



Viewpoint 44

View from Abbots Bridge Scenic River Access/Steyer Nature Preserve

looking East

Township of Pleasant

Republic Wind Farm

Sandusky and Seneca Counties, Ohio

Appendix C: Photo Log Sheet 22 of 49





Viewpoint 45

View from Steyer Nature Preserve - Parking Area off SR 148

looking North/Northeast

Township of Pleasant



Viewpoint 46

View from Sugar Creek Wildlife Area - Parking Area off SR 148

looking East

Township of Pleasant

Republic Wind Farm

Sandusky and Seneca Counties, Ohio

Appendix C: Photo Log Sheet 23 of 49





Viewpoint 47

View from Knobbys Praire
Wildlife Area - Parking Area
off SR 15

looking East

Township of Pleasant



Viewpoint 48

View from E County Rd 44 at
POI Sub Station

looking North Northwest

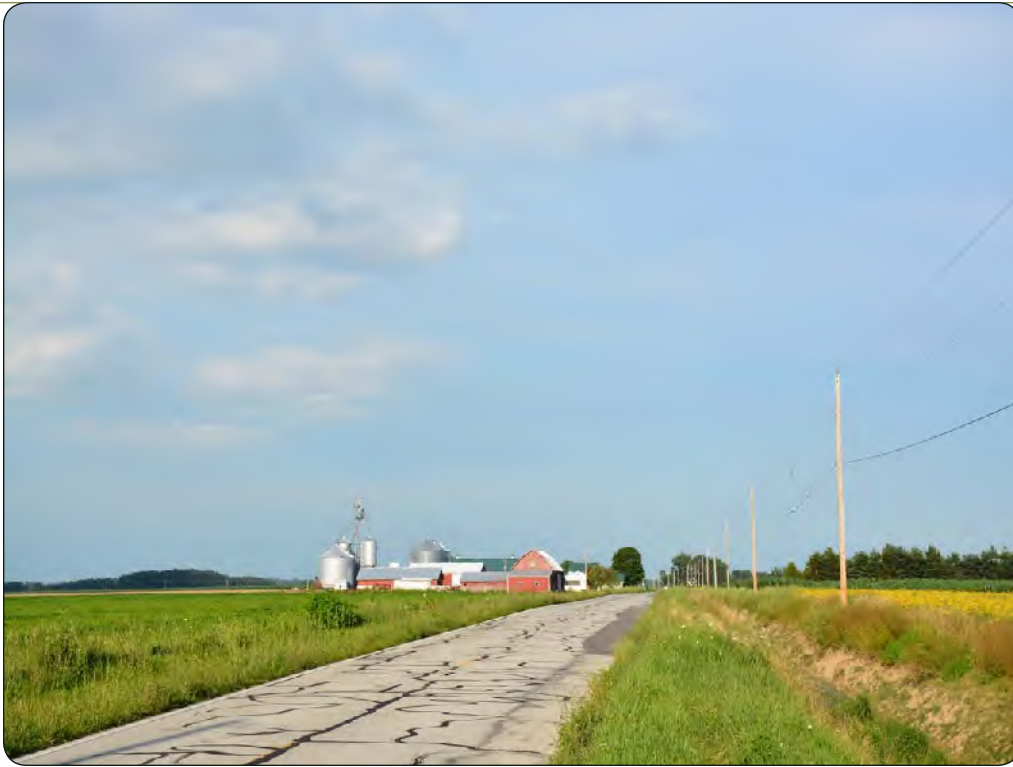
Township of Pleasant

Republic Wind Farm

Sandusky and Seneca Counties, Ohio

Appendix C: Photo Log Sheet 24 of 49





Viewpoint 49

View from CR 44 East of SR 75

looking East Northeast

Township of Pleasant



Viewpoint 50

View from SR 19 West of SR 32

looking South/Southwest

Township of Adams

Republic Wind Farm

Sandusky and Seneca Counties, Ohio

Appendix C: Photo Log Sheet 25 of 49





Viewpoint 51

View from SR 101 at Trail
0175

looking South/Southeast

Township of Adams



Viewpoint 52

View from Beaver Creek
Upground Reservoir - Main
Parking Area

looking South/Southwest

Township of Adams

Republic Wind Farm

Sandusky and Seneca Counties, Ohio

Appendix C: Photo Log Sheet 26 of 49





Viewpoint 53

View from Beaver Creek
Upground Reservoir - North
Parking Area

looking South/Southwest

Township of Adams



Viewpoint 54

View from Beaver Creek from
SR 19

looking Southeast

Township of Adams

Republic Wind Farm

Sandusky and Seneca Counties, Ohio

Appendix C: Photo Log Sheet 27 of 49





Viewpoint 55

View from Village of Green Springs at Intersection of East Adams Street and North Broadway Street

looking East

Township of Adams



Viewpoint 56

View from Green Spring Sulphur Mine Historic Marker

looking South Southeast

Township of Greek Creek

Republic Wind Farm

Sandusky and Seneca Counties, Ohio

Appendix C: Photo Log Sheet 28 of 49





Viewpoint 57

View from SR 53 North of
Fremont - No Simulation

looking South

Township of Sandusky



Viewpoint 58

View from Fremont Middle
School - Parking Lot

looking South Southeast

Township of Sandusky

Republic Wind Farm

Sandusky and Seneca Counties, Ohio

Appendix C: Photo Log Sheet 29 of 49





Viewpoint 59

View from North Street at SR 53

looking South Southeast

Township of Sandusky



Viewpoint 60

View from Sandusky County Fairgrounds - South Entrance

looking East Northeast

Township of Sandusky

Republic Wind Farm

Sandusky and Seneca Counties, Ohio

Appendix C: Photo Log Sheet 30 of 49





Viewpoint 61

View from Stamm Elementary
School/Harmon Field

looking Southeast

Township of Sandusky



Viewpoint 62

View from US 20 - Downtown
Fremont

looking Southeast

Township of Sandusky

Republic Wind Farm

Sandusky and Seneca Counties, Ohio

Appendix C: Photo Log Sheet 31 of 49





Viewpoint 63

View from Rutherford B. Hayes Presidential Library & Museums at Spiegel Grove

looking Southeast

Township of Ballville



Viewpoint 64

View from US 20, East of SR 214

looking South Southeast

Township of Greek Creek

Republic Wind Farm

Sandusky and Seneca Counties, Ohio

Appendix C: Photo Log Sheet 32 of 49





Viewpoint 65

View from SR 510 at SR 231/
Stokes Road

looking South Southeast

Township of Riley



Viewpoint 66

View from SR 510 North of
Clyde at Buck Creek

looking Southeast

Township of Greek Creek

Republic Wind Farm

Sandusky and Seneca Counties, Ohio

Appendix C: Photo Log Sheet 33 of 49





Viewpoint 67

View from Intersection of Main Street and West Buckeye Street, Clyde

looking South

Township of Greek Creek



Viewpoint 68

View from Clyde Elementary School

looking Southeast

Township of Greek Creek

Republic Wind Farm

Sandusky and Seneca Counties, Ohio

Appendix C: Photo Log Sheet 34 of 49





Viewpoint 69

View from Maj. Gen. James
B. McPherson House

looking South/Southwest

Township of Greek Creek



Viewpoint 70

View from Clyde Community
Park

looking Southeast

Township of Greek Creek

Republic Wind Farm

Sandusky and Seneca Counties, Ohio

Appendix C: Photo Log Sheet 35 of 49





Viewpoint 71

View from Hoppes Rd of
Collection Substation

looking Southeast

Township of Adams



Viewpoint 72

View from Miller Conservation
Farm

looking North/Northeast

Township of Adams

Republic Wind Farm

Sandusky and Seneca Counties, Ohio

Appendix C: Photo Log Sheet 36 of 49





Viewpoint 73

View from Clinton Nature Preserve, Sandusky Scenic River Access

looking East

Township of Clinton



Viewpoint 74

View from National Orphan's Home Junior Order United American Mechanics - No Sim

looking Northeast

Township of Clinton

Republic Wind Farm

Sandusky and Seneca Counties, Ohio

Appendix C: Photo Log Sheet 37 of 49





Viewpoint 75

View from North Sandusky
Street Historic District, Tiffin

looking Northeast

Township of Clinton



Viewpoint 76

View from Apple-Jack Park,
Tiffin

looking North/Northeast

Township of Clinton

Republic Wind Farm

Sandusky and Seneca Counties, Ohio

Appendix C: Photo Log Sheet 38 of 49





Viewpoint 77

View from SR 18/North
Greenfield Road and North
Township Road 15

looking East

Township of Clinton



Viewpoint 78

View from SR 18/North
Greenfield Road

looking East

Township of Clinton

Republic Wind Farm

Sandusky and Seneca Counties, Ohio

Appendix C: Photo Log Sheet 39 of 49





Viewpoint 79

View from TR 175 -West of
Village of Republic

looking Northeast

Township of Scipio



Viewpoint 80

View from SR 18/East
Jefferson Street - East of
Village of Republic

looking East/Northeast

Township of Scipio

Republic Wind Farm

Sandusky and Seneca Counties, Ohio

Appendix C: Photo Log Sheet 40 of 49





Viewpoint 81

View from Intersection of
Center and Washington
Streets - Village of Republic

looking North

Township of Scipio



Viewpoint 82

View from SR 19 at Rock
Creek

looking Northeast

Township of Scipio

Republic Wind Farm

Sandusky and Seneca Counties, Ohio

Appendix C: Photo Log Sheet 41 of 49





Viewpoint 83

View from US 224 at
Intersection with SR 19

looking Northeast

Township of Bloom



Viewpoint 84

View from SR 19 - Village of
Bloomville

looking North

Township of Bloom

Republic Wind Farm

Sandusky and Seneca Counties, Ohio

Appendix C: Photo Log Sheet 42 of 49





Viewpoint 85

View from Seneca Co. Park
District Equestrian Parking &
Trails

looking North Northwest

Township of Bloom



Viewpoint 86

View from Garlo Heritage
Nature Preserve

looking North Northeast

Township of Bloom

Republic Wind Farm

Sandusky and Seneca Counties, Ohio

Appendix C: Photo Log Sheet 43 of 49





Viewpoint 87

View from Intersection of US
224 and SR 4 - Village of
Attica

looking West Northwest

Township of Venice



Viewpoint 88

View from SR 162 West of
Center Heights Road

looking Northwest

Township of Reed

Republic Wind Farm

Sandusky and Seneca Counties, Ohio

Appendix C: Photo Log Sheet 44 of 49





Viewpoint 89

View from SR 4 at SR 269/
Huron-Seneca County Line
Road

looking West

Township of Thompson



Viewpoint 90

View from SR 269/Huron-
Seneca County Line Rd at
Sorrowful Mother Shrine

looking West Northwest

Township of Thompson

Republic Wind Farm

Sandusky and Seneca Counties, Ohio

Appendix C: Photo Log Sheet 45 of 49



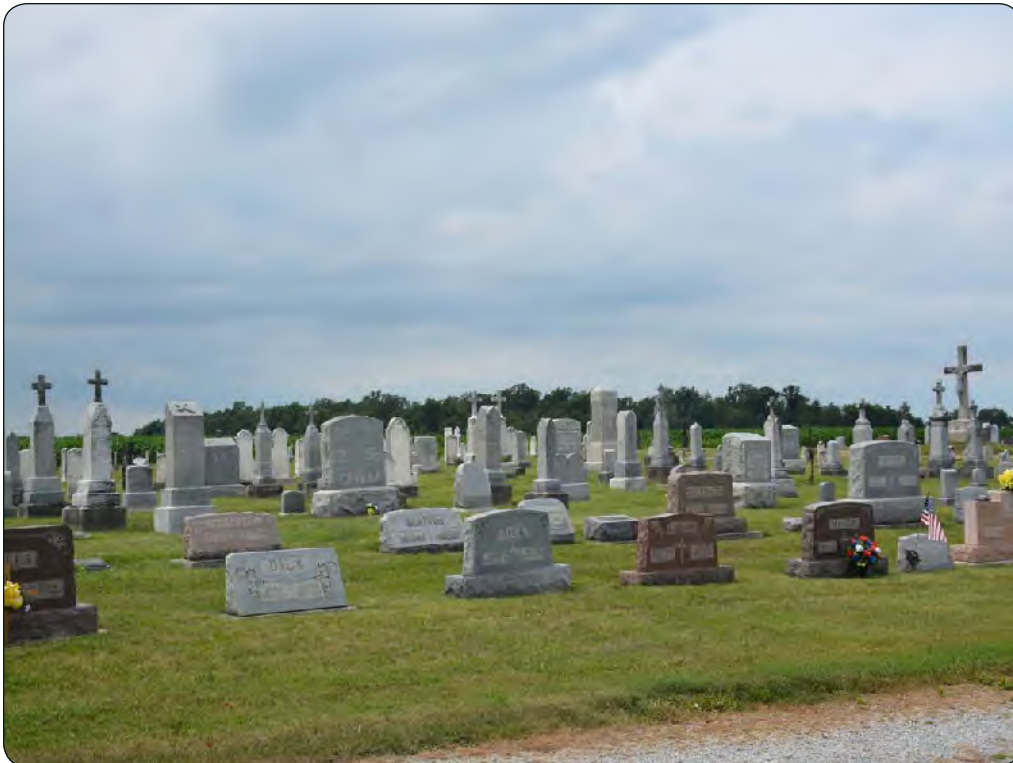


Viewpoint 91

View from SR 269/Huron-Seneca County Line Rd at SR 46

looking Northwest

Township of Thompson



Viewpoint 92

View from St. Michael's Catholic Cemetery off of SR 46

looking Northwest

Township of Thompson

Republic Wind Farm

Sandusky and Seneca Counties, Ohio

Appendix C: Photo Log Sheet 46 of 49





Viewpoint 93

View from East Township
Road 186 - Seneca County
Park District Conservation
Easement

looking Northwest

Township of Thompson



Viewpoint 94

View from Main Street - South
of the Village of Flat Rock

looking West

Township of Thompson

Republic Wind Farm

Sandusky and Seneca Counties, Ohio

Appendix C: Photo Log Sheet 47 of 49





Viewpoint 95

View from Intersection of East
County Road 62 and CR 308/
Flat Rock Road

looking Southwest

Township of York



Viewpoint 96

View from Flat Rock Rd at
Rail Road Crossing

looking Southwest

Township of York

Republic Wind Farm

Sandusky and Seneca Counties, Ohio

Appendix C: Photo Log Sheet 48 of 49





Viewpoint 97

View from I80 and I90 -
Commodore Perry Service
Plaza

looking

Township of Riley

Republic Wind Farm

Sandusky and Seneca Counties, Ohio

Appendix C: Photo Log Sheet 49 of 49



Appendix D

Visual Simulations

Viewpoint: 37

Photograph Information:

Date: July 19, 2017
Time: 5:12 PM
Weather Conditions: Partly Cloudy

View Location Information:

Location: State Route 12 (State Street) at Intersection with County Road 118 (Township Line Road)
Township: Ballville
County: Sandusky
Direction of View: Southeast (124.7°)
Camera Elevation: 678.6 feet (206.8 meters)
Latitude: 41.28129000° N
Longitude: 83.18770700° W
Landscape Similarity Zone: Rural Residential/Agricultural Zone
Viewer Type: Local Residents
Sensitive Site: N/A
Distance Zone: Background
Nearest Visible Turbine: 7.0 miles

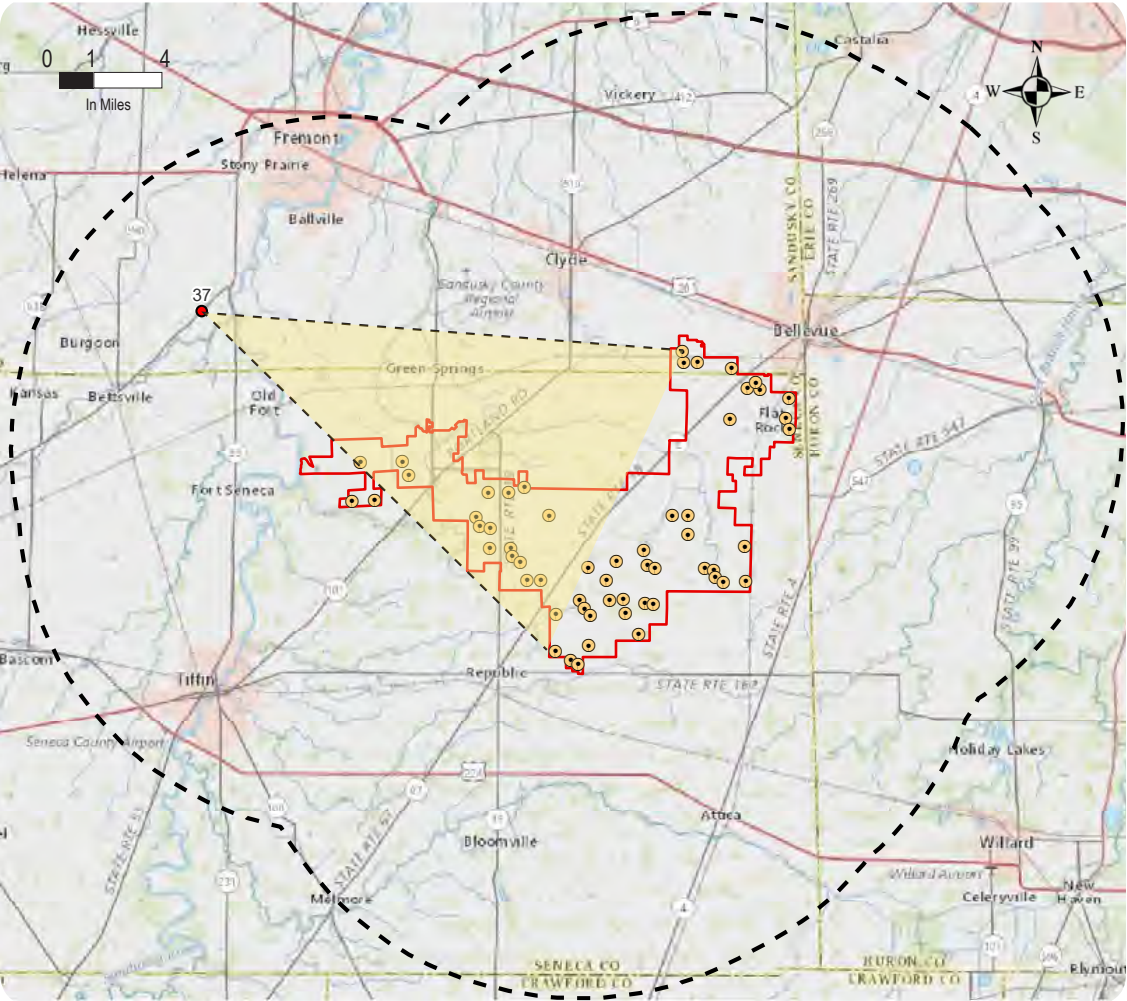
Camera Properties:

Camera Make/Model: Nikon D7100
Focal Length: 32mm
Camera Sensor Size: 23.5

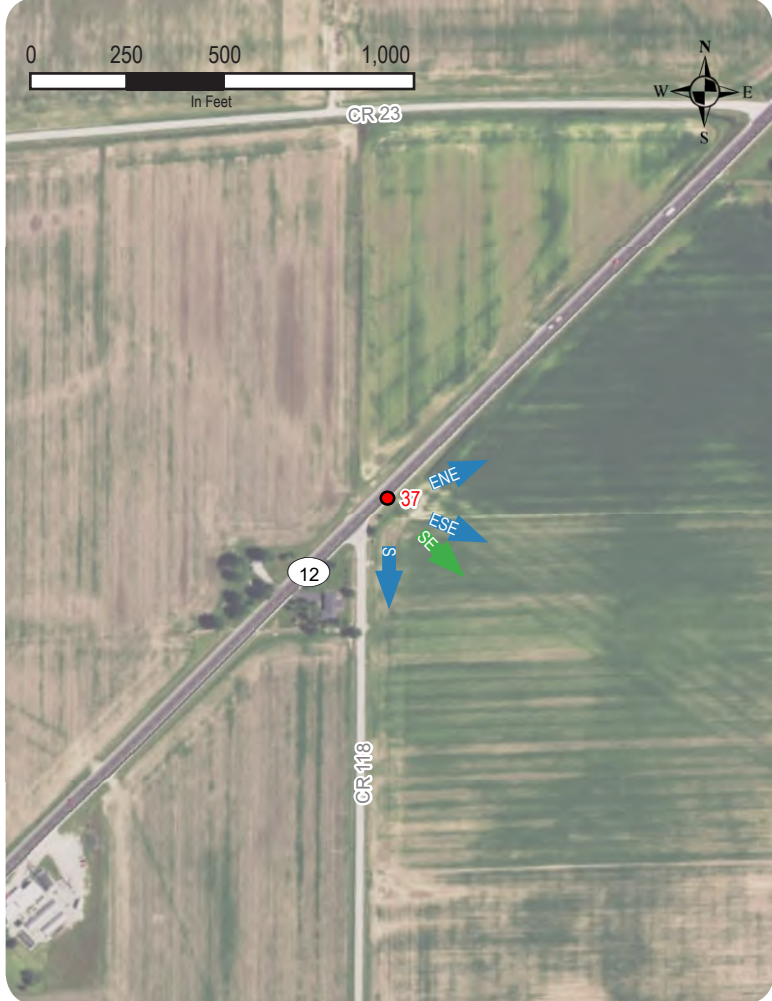
Project Information:

Model: Vestas V136
Hub Height: 367 feet (112 meters)
Rotor Diameter: 446 feet (136 meters)
Max. Height Above Ground Level: 591 feet (180 meters)
Number of Turbines in Project: 58 Turbines

Viewpoint Location



Viewpoint Context



Context Photo: View to the East-Northeast



Context Photo: View to the East-Southeast



Context Photo: View to the Southeast



Context Photo: View to the South

Republic Wind Farm

Sandusky and Seneca Counties, Ohio

Appendix D: Viewpoint Information Sheet - Viewpoint 37

Existing Conditions



Simulation



Viewpoint: 47

Photograph Information:

Date: July 19, 2017
Time: 6:27 PM
Weather Conditions: Scattered Clouds

View Location Information:

Location: Knobby's Prairie Wildlife Area - Parking Area off of North County Road 15
Township: Pleasant
County: Seneca
Direction of View: East (83.5°)
Camera Elevation: 715.4 feet (218.1 meters)
Latitude: 41.19984500° N
Longitude: 83.11718100° W
Landscape Similarity Zone: Rural Residential/Agricultural Zone
Viewer Type: Tourists and Recreational Users
Sensitive Site: Knobby's Prairie Wildlife Area
Distance Zone: Mid-Ground
Nearest Visible Turbine: 0.9 mile

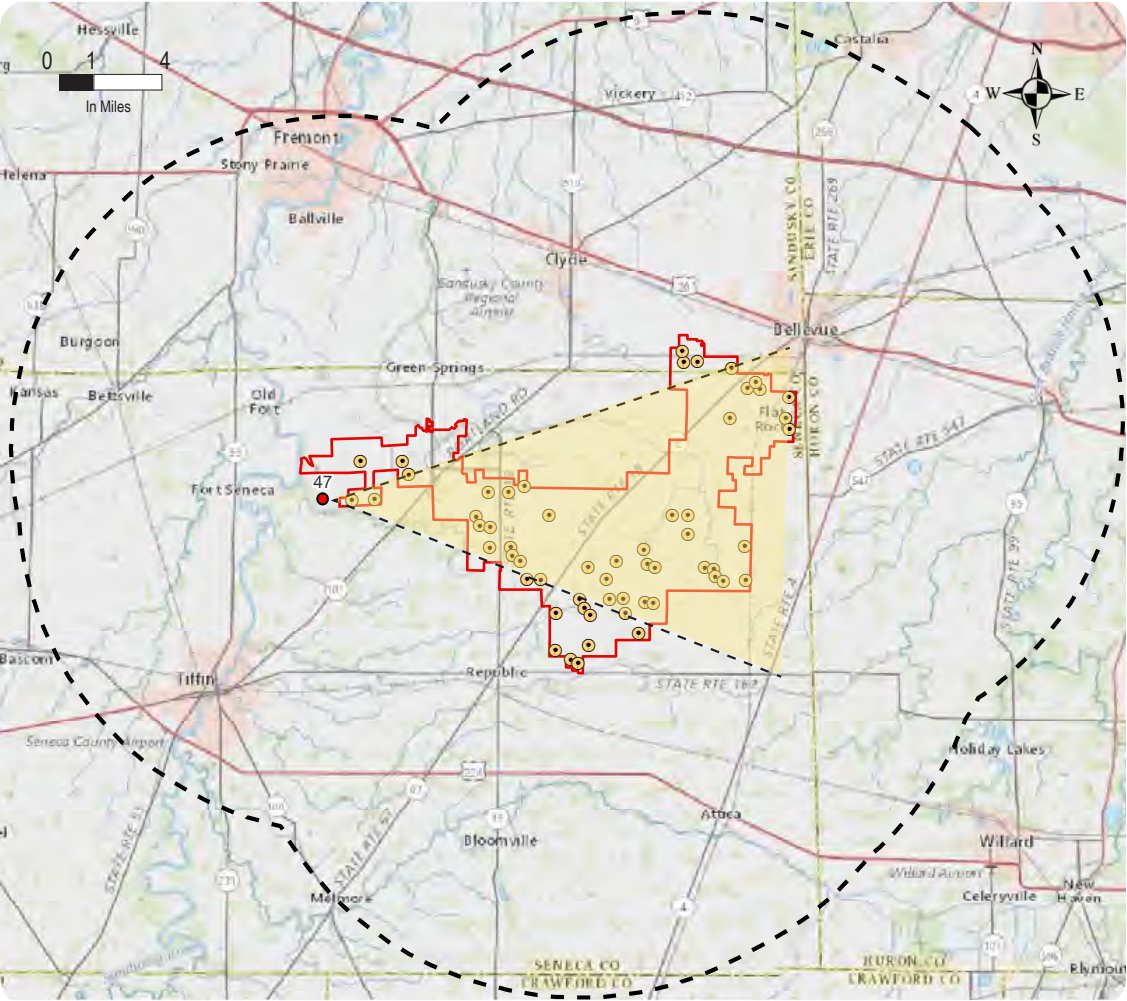
Camera Properties:

Camera Make/Model: Nikon D7100
Focal Length: 32mm
Camera Sensor Size: 23.5

Project Information:

Model: Vestas V136
Hub Height: 367 feet (112 meters)
Rotor Diameter: 446 feet (136 meters)
Max. Height Above Ground Level: 591 feet (180 meters)
Number of Turbines in Project: 58 Turbines

Viewpoint Location



Viewpoint Context



Context Photo: View to the Northeast



Context Photo: View to the East



Context Photo: View to the East-Southeast



Context Photo: View to the South-Southeast

Republic Wind Farm

Sandusky and Seneca Counties, Ohio

Appendix D: Viewpoint Information Sheet - Viewpoint 47

Existing Conditions





Viewpoint: 49

Photograph Information:

Date: July 19, 2017
Time: 6:57 PM
Weather Conditions: Partly Cloudy

View Location Information:

Location: East County Road 44, east of Township Road 75 (Jopp Road)
Township: Pleasant
County: Seneca
Direction of View: East-Northeast (74.6°)
Camera Elevation: 711.6 feet (216.9 meters)
Latitude: 41.21131400° N
Longitude: 83.10915200° W
Landscape Similarity Zone: Rural Residential/Agricultural Zone
Viewer Type: Local Residents
Sensitive Site: N/A
Distance Zone: Mid-Ground
Nearest Visible Turbine: 0.8 mile

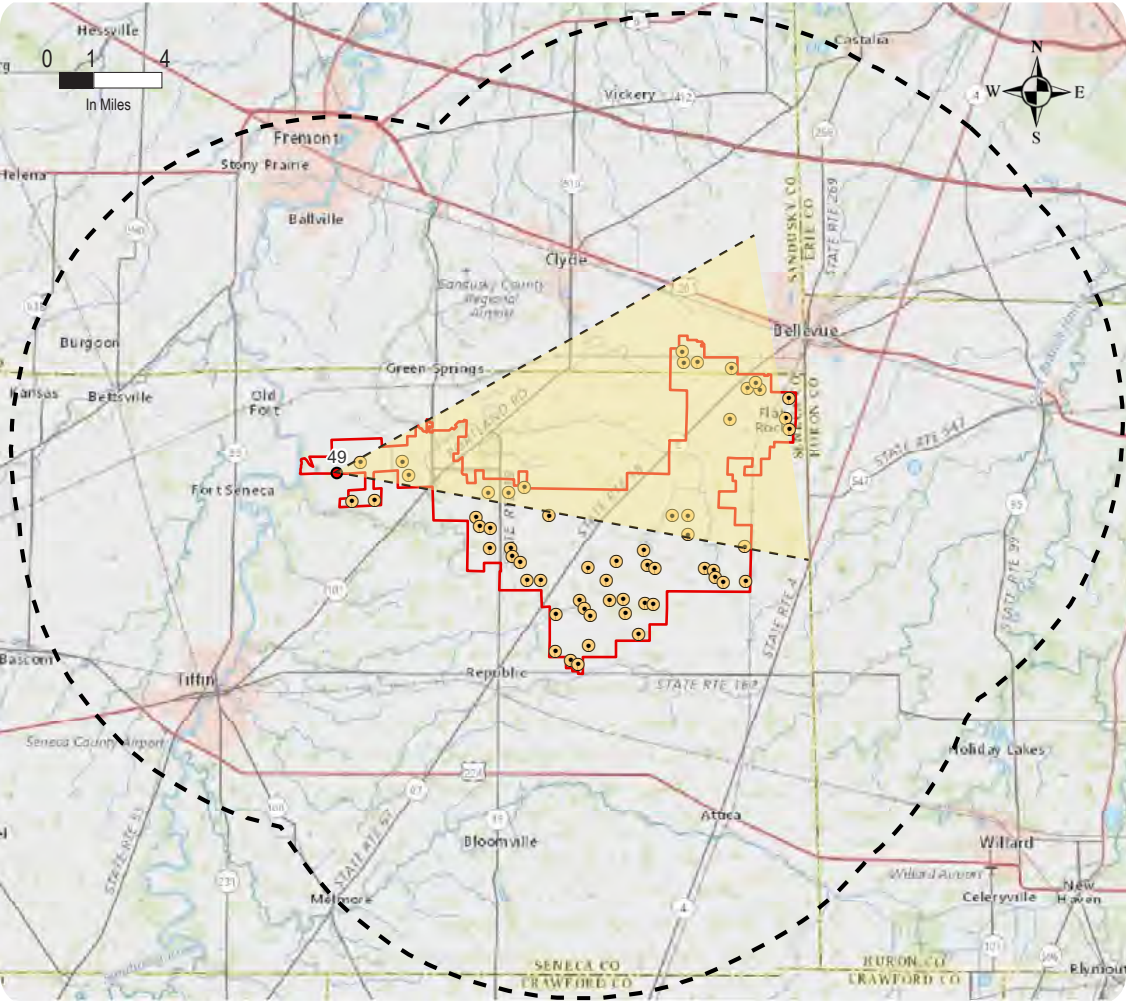
Camera Properties:

Camera Make/Model: Nikon D7100
Focal Length: 32mm
Camera Sensor Size: 23.5

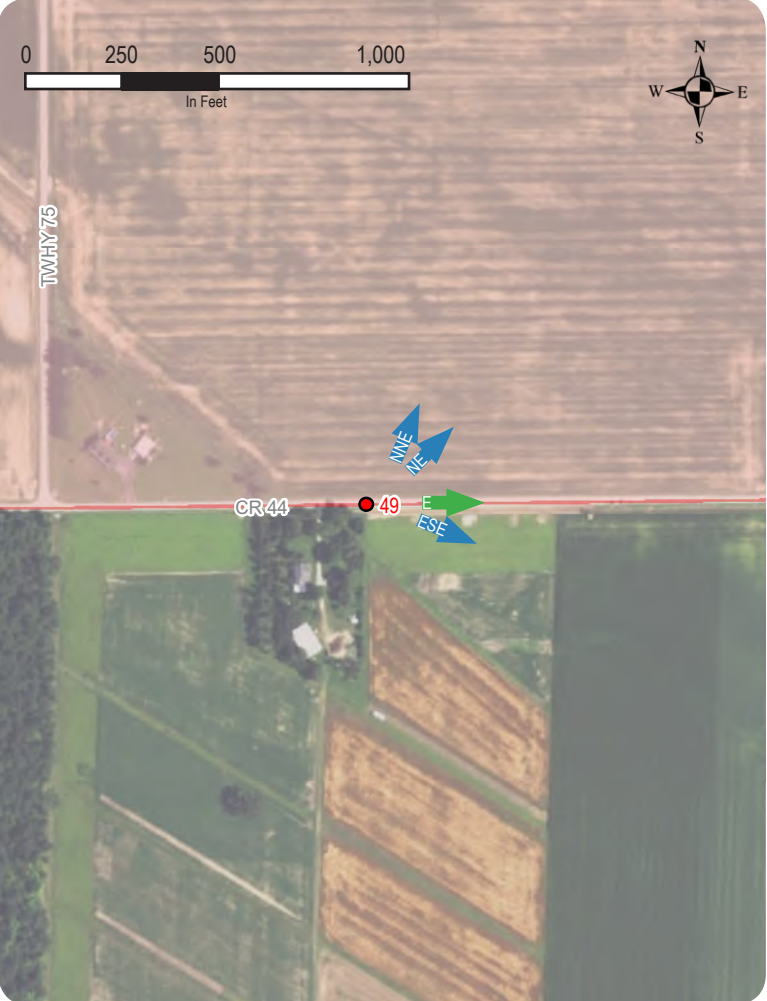
Project Information:

Model: Vestas V136
Hub Height: 367 feet (112 meters)
Rotor Diameter: 446 feet (136 meters)
Max. Height Above Ground Level: 591 feet (180 meters)
Number of Turbines in Project: 58 Turbines

Viewpoint Location



Viewpoint Context



Context Photo: View to the North-Northeast



Context Photo: View to the Northeast



Context Photo: View to the East



Context Photo: View to the East-Southeast

Republic Wind Farm

Sandusky and Seneca Counties, Ohio

Appendix D: Viewpoint Information Sheet - Viewpoint 49



Existing Conditions





Viewpoint: 50

Photograph Information:

Date: July 19, 2017
Time: 7:08 PM
Weather Conditions: Partly Cloudy

View Location Information:

Location: East State Route 19, west of East County Road 32
Township: Adams
County: Seneca
Direction of View: South (176.7°)
Camera Elevation: 786 feet (239.6 meters)
Latitude: 41.21311200° N
Longitude: 83.02697300° W
Landscape Similarity Zone: Transportation Corridor Zone
Viewer Type: Local Residents
Sensitive Site: N/A
Distance Zone: Background
Nearest Visible Turbine: 0.7 mile

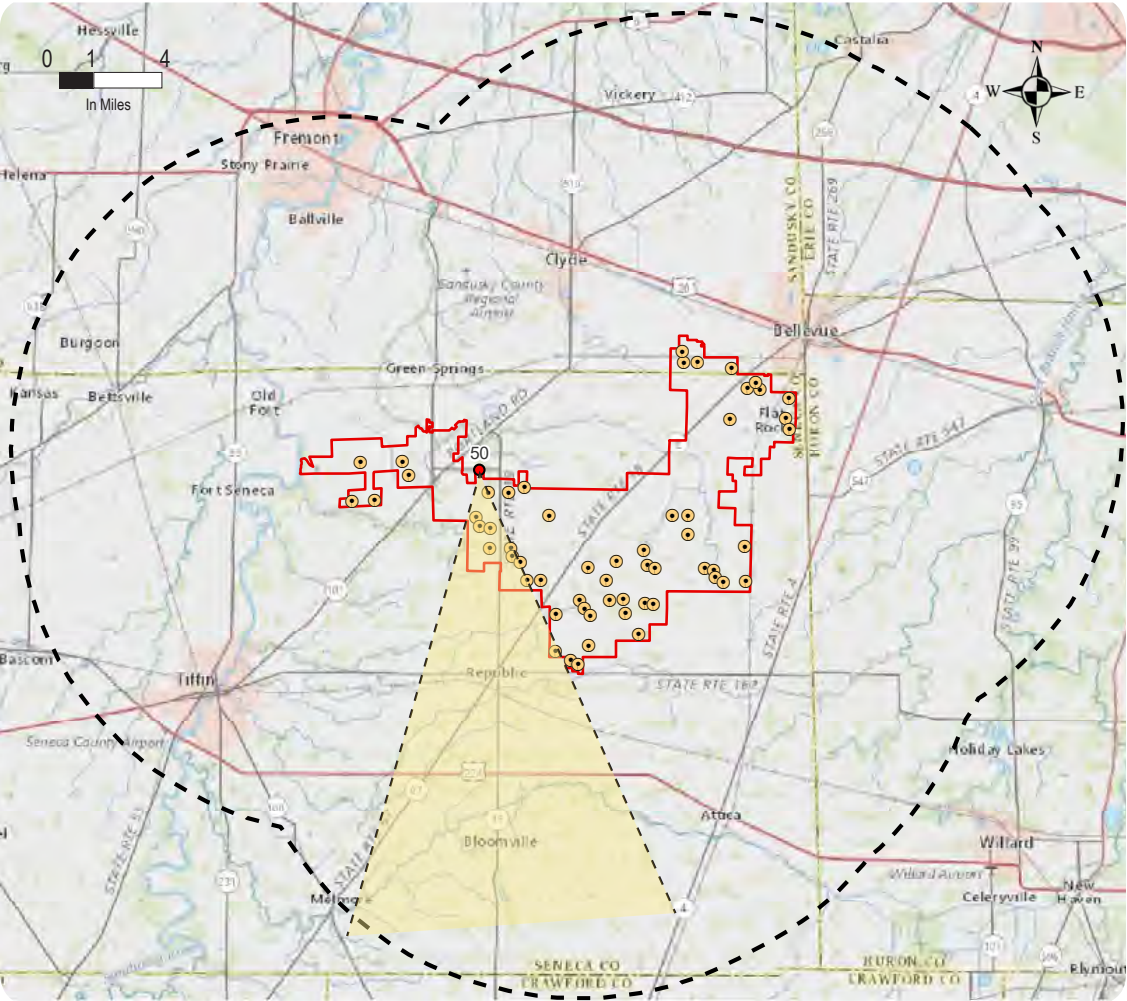
Camera Properties:

Camera Make/Model: Nikon D7100
Focal Length: 32mm
Camera Sensor Size: 23.5

Project Information:

Model: Vestas V136
Hub Height: 367 feet (112 meters)
Rotor Diameter: 446 feet (136 meters)
Max. Height Above Ground Level:
591 feet (180 meters)
Number of Turbines in Project: 58 Turbines

Viewpoint Location



Viewpoint Context



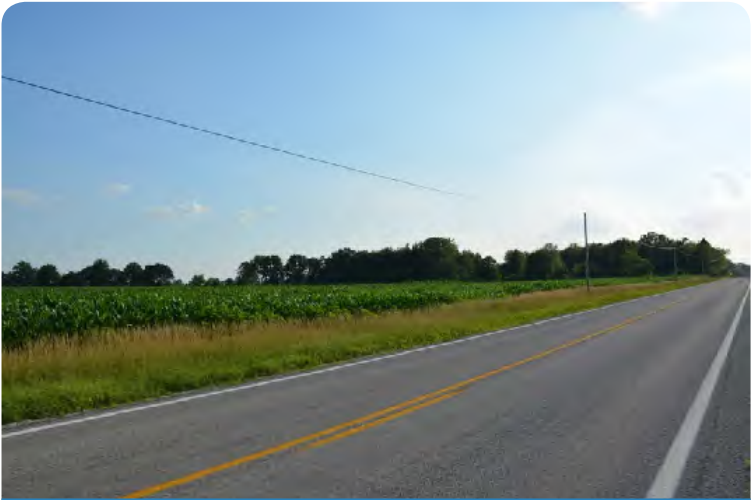
Context Photo: View to the East



Context Photo: View to the East-Southeast



Context Photo: View to the South



Context Photo: View to the Southwest

Republic Wind Project

Sandusky and Seneca Counties, Ohio

Appendix D: Viewpoint Information Sheet - Viewpoint 50

Existing Conditions





Viewpoint: 53

Photograph Information:

Date: July 19, 2017
Time: 7:38 PM
Weather Conditions: Clear

View Location Information:

Location: Beaver Creek Reservoir - North Parking Area, off East County Road 34
Township: Adams
County: Seneca
Direction of View: South (170.6°)
Camera Elevation: 768 feet (234.1 meters)
Latitude: 41.24147300° N
Longitude: 83.02114900° W
Landscape Similarity Zone: Rural Residential/Agricultural Zone
Viewer Type: Tourists and Recreational Users
Sensitive Site: Beaver Creek Reservoir
Distance Zone: Mid-Ground
Nearest Visible Turbine: 2.6 miles

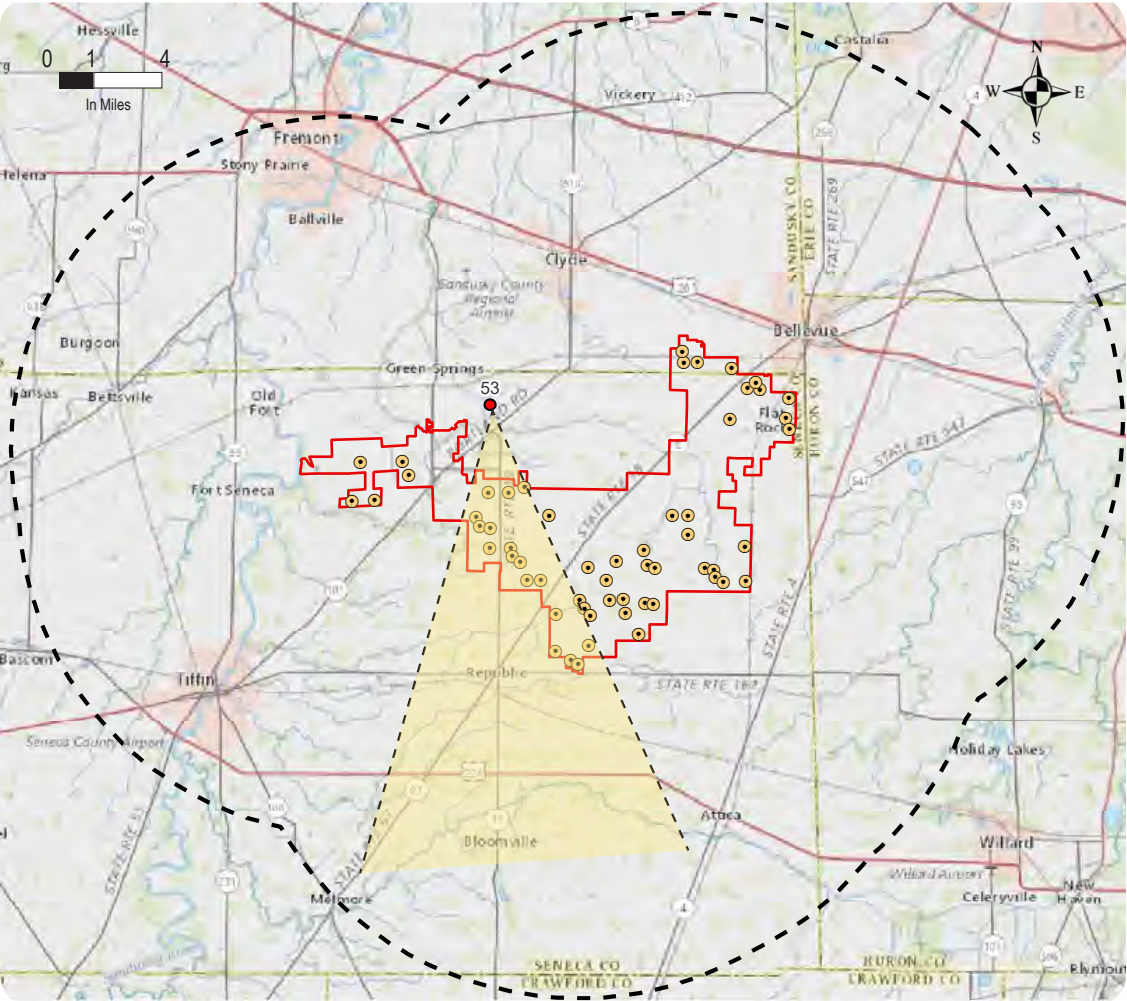
Camera Properties:

Camera Make/Model: Nikon D7100
Focal Length: 32mm
Camera Sensor Size: 23.5

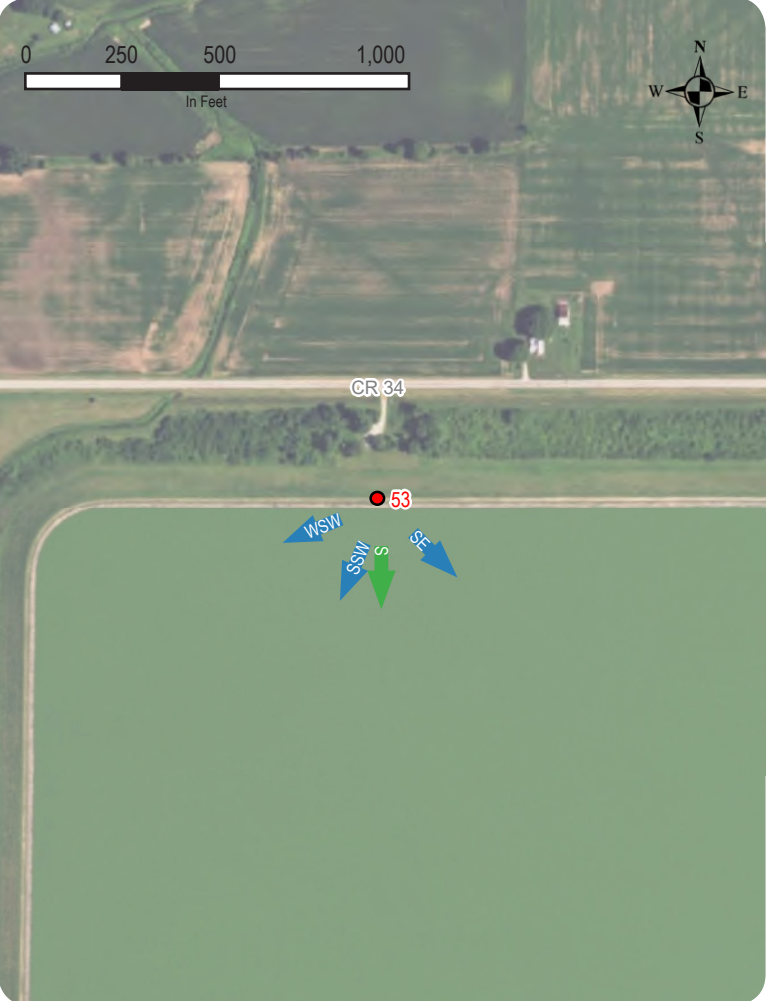
Project Information:

Model: Vestas V136
Hub Height: 367 feet (112 meters)
Rotor Diameter: 446 feet (136 meters)
Max. Height Above Ground Level: 591 feet (180 meters)
Number of Turbines in Project: 58 Turbines

Viewpoint Location



Viewpoint Context



Context Photo: View to the Southeast



Context Photo: View to the South



Context Photo: View to the Southwest



Context Photo: View to the West-Southwest

Republic Wind Project

Sandusky and Seneca Counties, Ohio

Appendix D: Viewpoint Information Sheet - Viewpoint 53

Existing Conditions





Viewpoint: 67

Photograph Information:

Date: July 20, 2017
Time: 12:15 PM
Weather Conditions: Mostly Cloudy

View Location Information:

Location: Intersection of State Route 101 (Main Street) and Buckeye Street
City: Clyde
County: Sandusky
Direction of View: South (180.7°)
Camera Elevation: 702.1 feet (214 meters)
Latitude: 41.30527301° N
Longitude: 82.97485399° W
Landscape Similarity Zone: City/Village/Hamlet Zone
Viewer Type: Local Residents/Through Travelers/Commuters
Sensitive Site: N/A
Distance Zone: Background
Nearest Visible Turbine: N/A

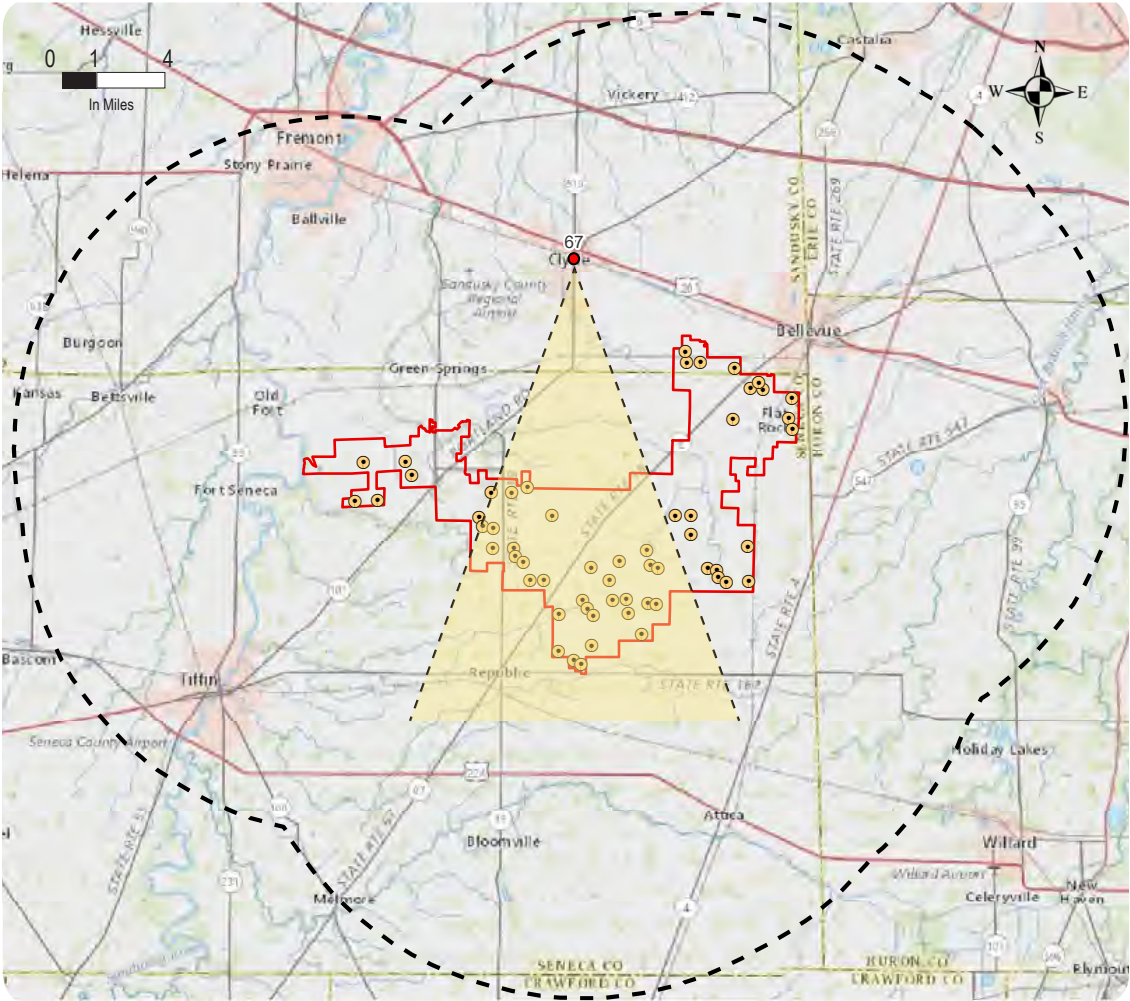
Camera Properties:

Camera Make/Model: Nikon D7100
Focal Length: 32mm
Camera Sensor Size: 23.5

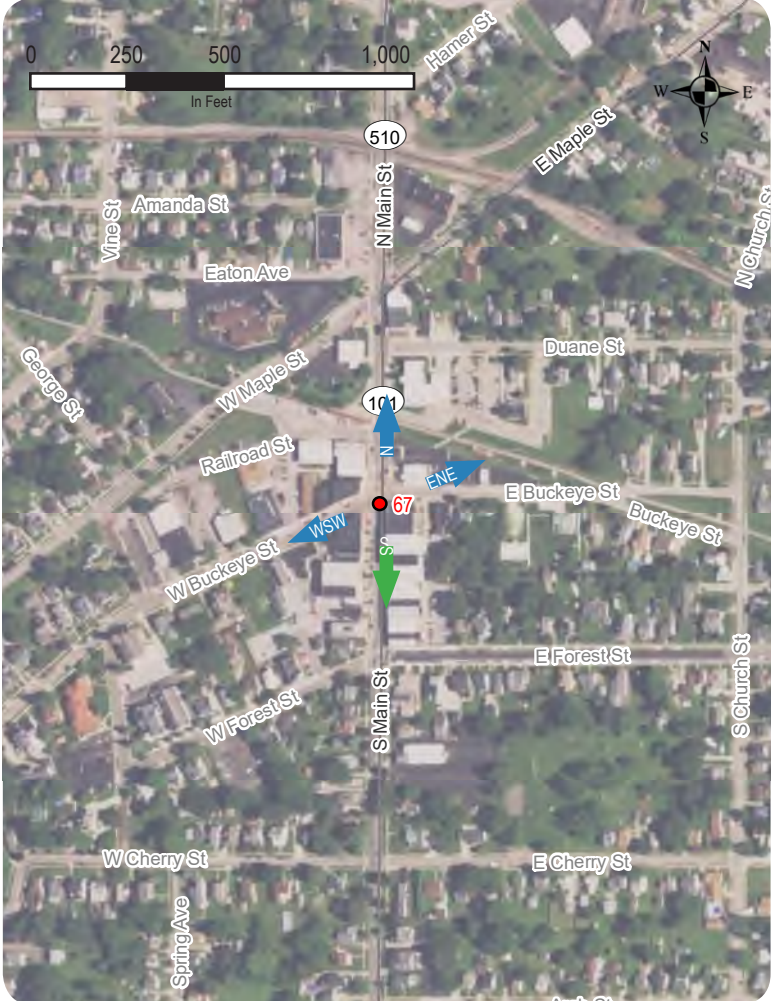
Project Information:

Model: Vestas V136
Hub Height: 367 feet (112 meters)
Rotor Diameter: 446 feet (136 meters)
Max. Height Above Ground Level: 591 feet (180 meters)
Number of Turbines in Project: 58 Turbines

Viewpoint Location



Viewpoint Context



Context Photo: View to the North



Context Photo: View to the East-Northeast



Context Photo: View to the South



Context Photo: View to the West-Southwest

Republic Wind Project

Sandusky and Seneca Counties, Ohio

Appendix D: Viewpoint Information Sheet - Viewpoint 67

Existing Conditions



Simulation



Note: Highlighted green turbines represent proposed locations and are screened by topography, vegetation, and built structures



Viewpoint: 71

Photograph Information:

Date: July 20, 2017
Time: 11:48 AM
Weather Conditions: Partly Cloudy

View Location Information:

Location: East Township Road 148 (Hoppes Road) east of North County Road 43
Township: Adams
County: Seneca
Direction of View: Southeast (127.7°)
Camera Elevation: 786.7 feet (239.8 meters)
Latitude: 41.19833300° N
Longitude: 83.04144500° W
Landscape Similarity Zone: Rural Residential/Agricultural Zone
Viewer Type: Local
Sensitive Site: N/A
Distance Zone: Foreground
Nearest Visible Turbine: 0.7 mile

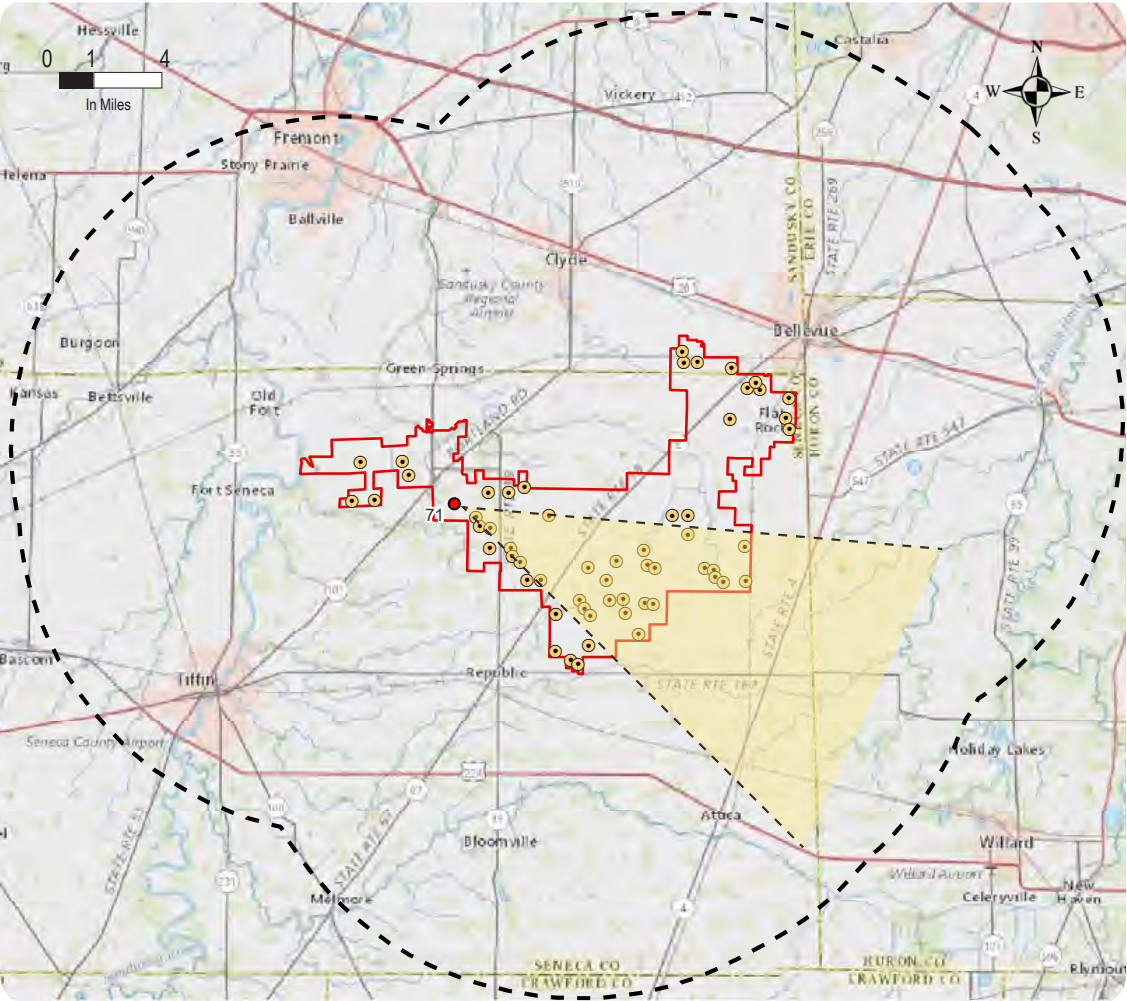
Camera Properties:

Camera Make/Model: Nikon D7100
Focal Length: 32mm
Camera Sensor Size: 23.5

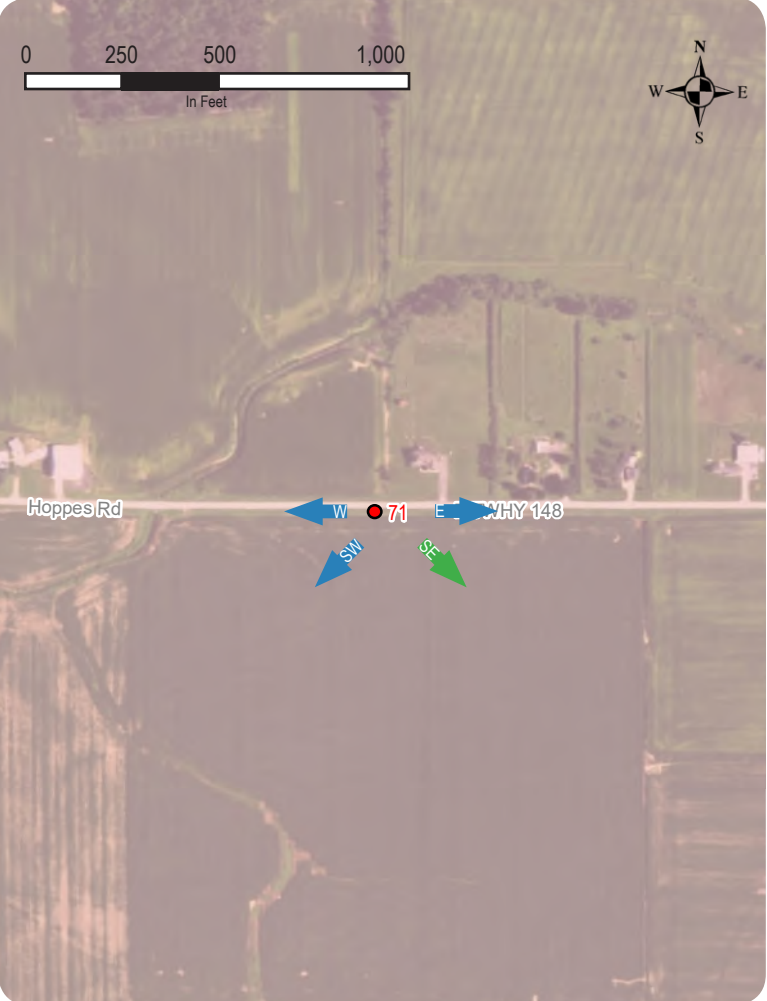
Project Information:

Model: Vestas V136
Hub Height: 367 feet (112 meters)
Rotor Diameter: 446 feet (136 meters)
Max. Height Above Ground Level: 591 feet (180 meters)
Number of Turbines in Project: 58 Turbines

Viewpoint Location



Viewpoint Context



Context Photo: View to the East



Context Photo: View to the Southeast



Context Photo: View to the Southwest



Context Photo: View to the West

Republic Wind Project

Sandusky and Seneca Counties, Ohio

Appendix D: Viewpoint Information Sheet - Viewpoint 71

Existing Conditions



Simulation



Viewpoint: 80

Photograph Information:

Date: July 20, 2017
Time: 1:31 PM
Weather Conditions: Partly Cloudy

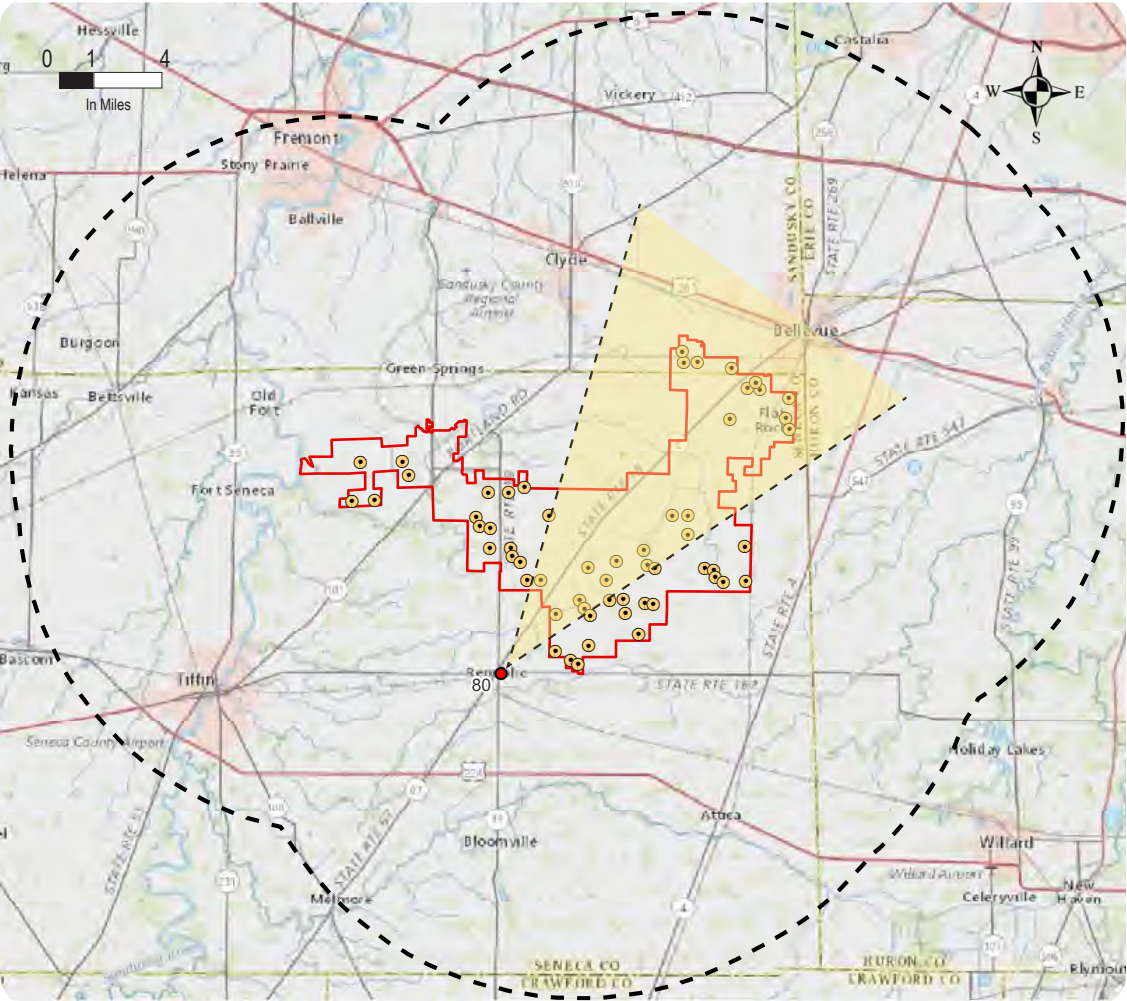
View Location Information:

Location: East State Route 162 (East Jefferson Street), East of the Village of Republic
Village: Republic
County: Seneca
Direction of View: Northeast (51.1°)
Camera Elevation: 877.2 feet (267.4 meters)
Latitude: 41.12464900° N
Longitude: 83.01396500° W
Landscape Similarity Zone: Suburban Residential Zone
Viewer Type: Local
Sensitive Site: Village of Republic
Distance Zone: Mid-Ground
Nearest Visible Turbine: 2.4 miles

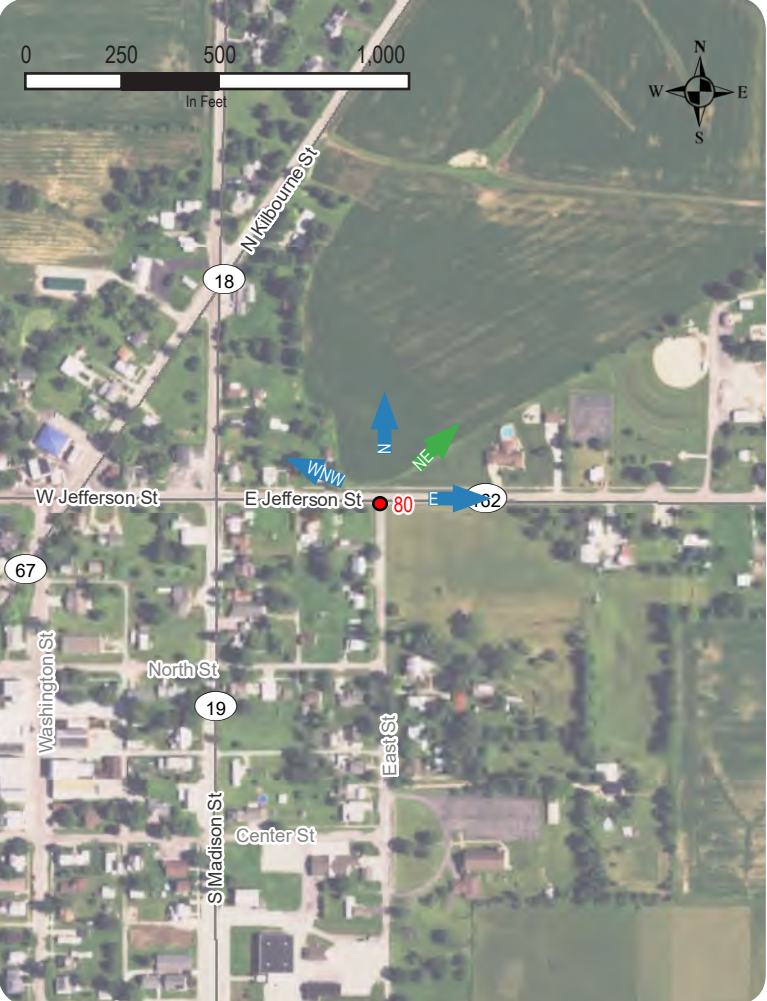
Camera Properties:

Camera Make/Model: Nikon D7100
Focal Length: 32mm
Camera Sensor Size: 23.5
Project Information:
Model: Vestas V136
Hub Height: 367 feet (112 meters)
Rotor Diameter: 446 feet (136 meters)
Max. Height Above Ground Level: 591 feet (180 meters)
Number of Turbines in Project: 58 Turbines

Viewpoint Location



Viewpoint Context



Context Photo: View to the West-Northwest



Context Photo: View to the North



Context Photo: View to the Northeast



Context Photo: View to the East

Republic Wind Project

Sandusky and Seneca Counties, Ohio

Appendix D: Viewpoint Information Sheet - Viewpoint 80

Existing Conditions



Simulation



Viewpoint: 88

Photograph Information:

Date: July 20, 2017
Time: 2:46 PM
Weather Conditions: Cloudy

View Location Information:

Location: East State Route 162 west of North Township
Road 81 (Center Heights Road)
Township: Reed
County: Seneca
Direction of View: Northwest (321.6°)
Camera Elevation: 915.7 feet (279.1 meters)
Latitude: 41.12467600° N
Longitude: 82.90256500° W
Landscape Similarity Zone: Rural Residential/Agricultural Zone
Viewer Type: Local Residents
Sensitive Site: N/A
Distance Zone: Mid-Ground
Nearest Visible Turbine: 2.0 miles

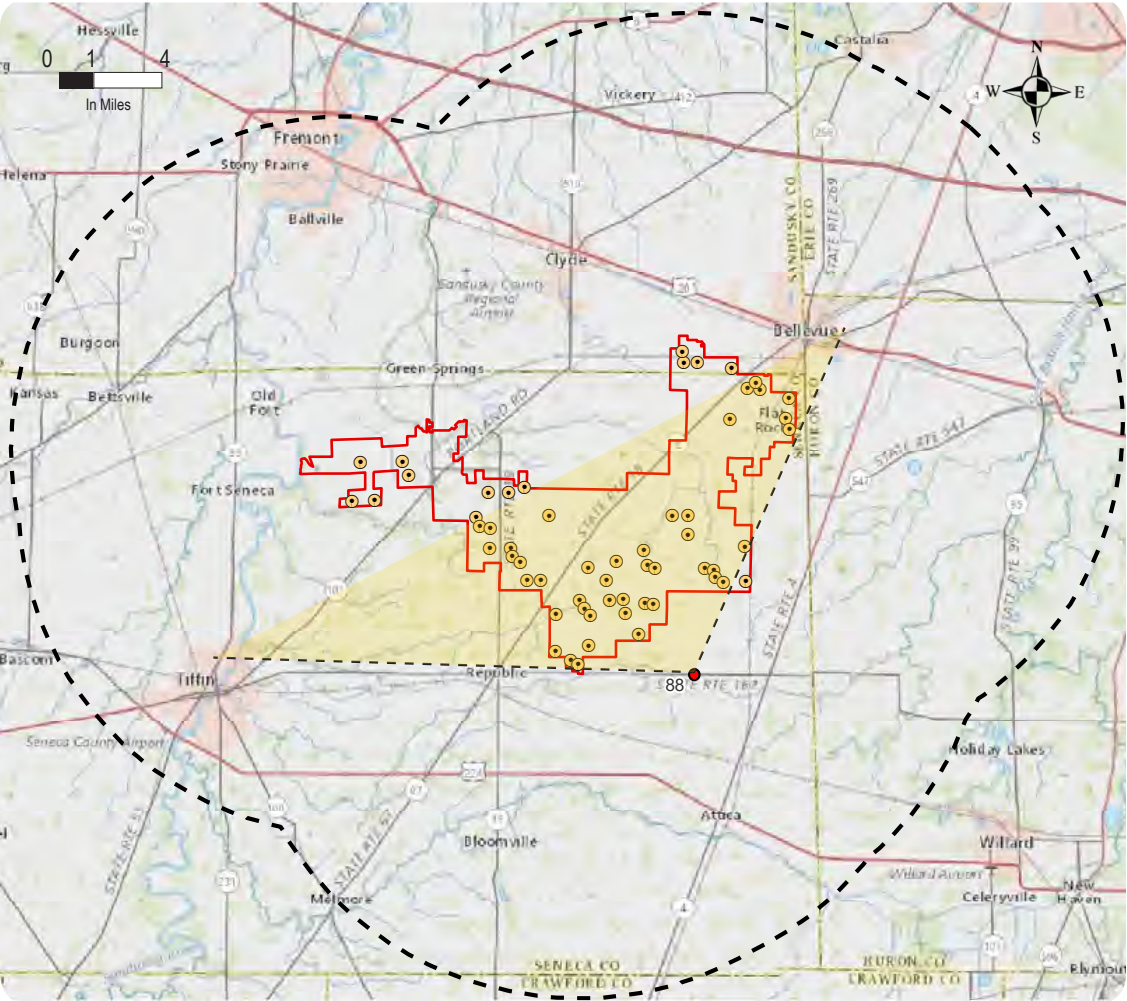
Camera Properties:

Camera Make/Model: Nikon D7100
Focal Length: 32mm
Camera Sensor Size: 23.5

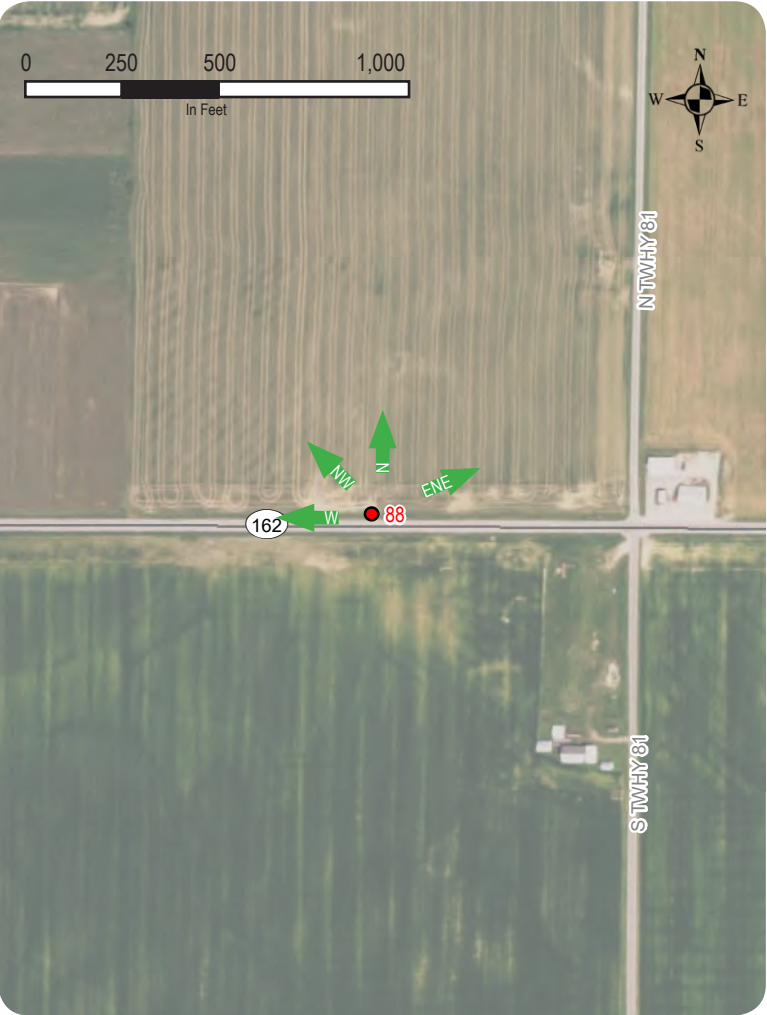
Project Information:

Model: Vestas V136
Hub Height: 367 feet (112 meters)
Rotor Diameter: 446 feet (136 meters)
Max. Height Above Ground Level:
591 feet (180 meters)
Number of Turbines in Project: 58 Turbines

Viewpoint Location



Viewpoint Context



Context Photo: View to the West



Context Photo: View to the Northwest



Context Photo: View to the North



Context Photo: View to the East-Northeast

Republic Wind Farm

Sandusky and Seneca Counties, Ohio

Appendix D: Viewpoint Information Sheet - Viewpoint 88





Viewpoint: 91

Photograph Information:

Date: July 20, 2017
Time: 3:06 PM
Weather Conditions: Overcast

View Location Information:

Location: East County Road 46 at intersection with State Route 269 (Huron-Seneca County Line Road)
Township: Thompson
County: Seneca
Direction of View: West-Southwest (267°)
Camera Elevation: 832.7 feet (253.8 meters)
Latitude: 41.18986401° N
Longitude: 82.83789899° W
Landscape Similarity Zone: Suburban Residential Zone
Viewer Type: Local Residents
Sensitive Site: N/A
Distance Zone: Mid-Ground
Nearest Visible Turbine: 1.9 miles

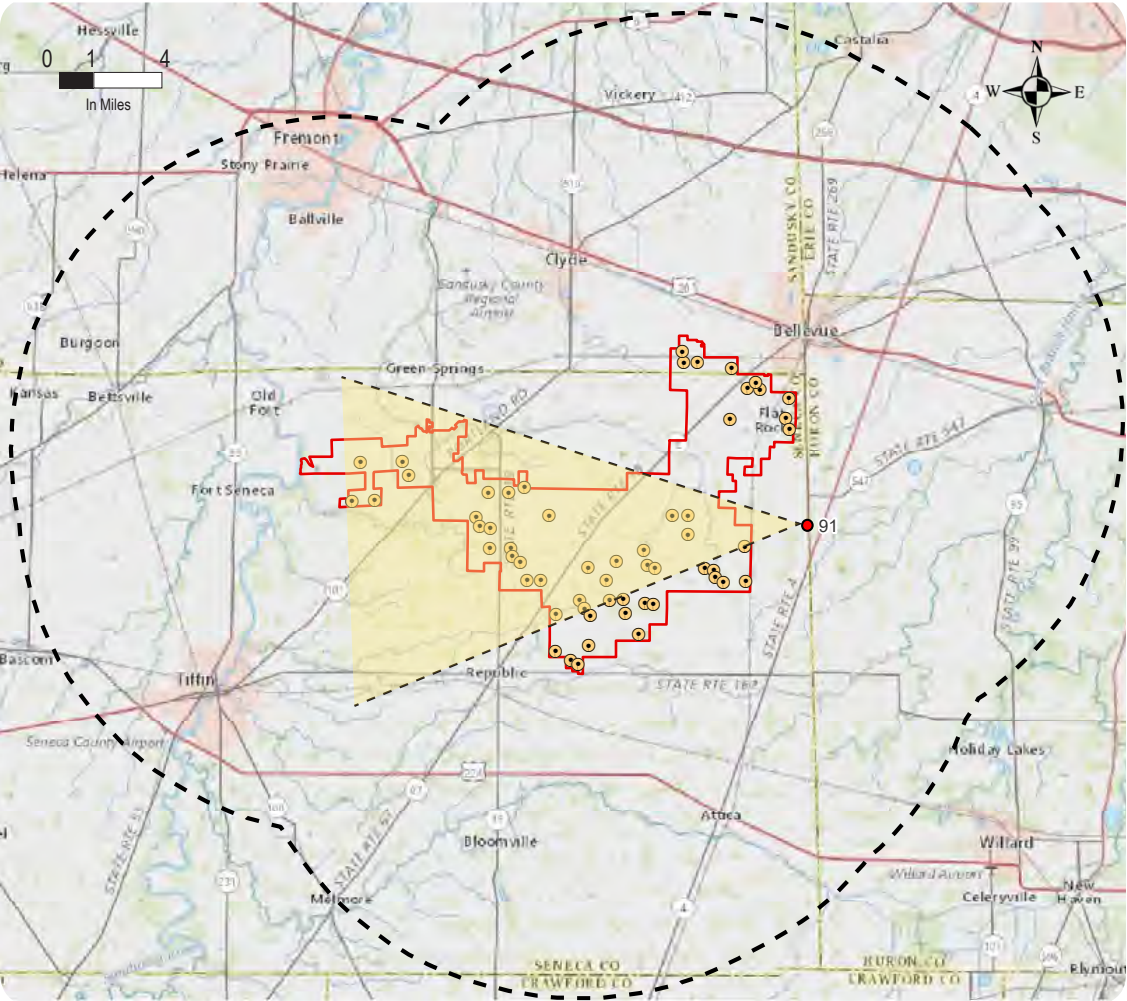
Camera Properties:

Camera Make/Model: Nikon D7100
Focal Length: 32mm
Camera Sensor Size: 23.5

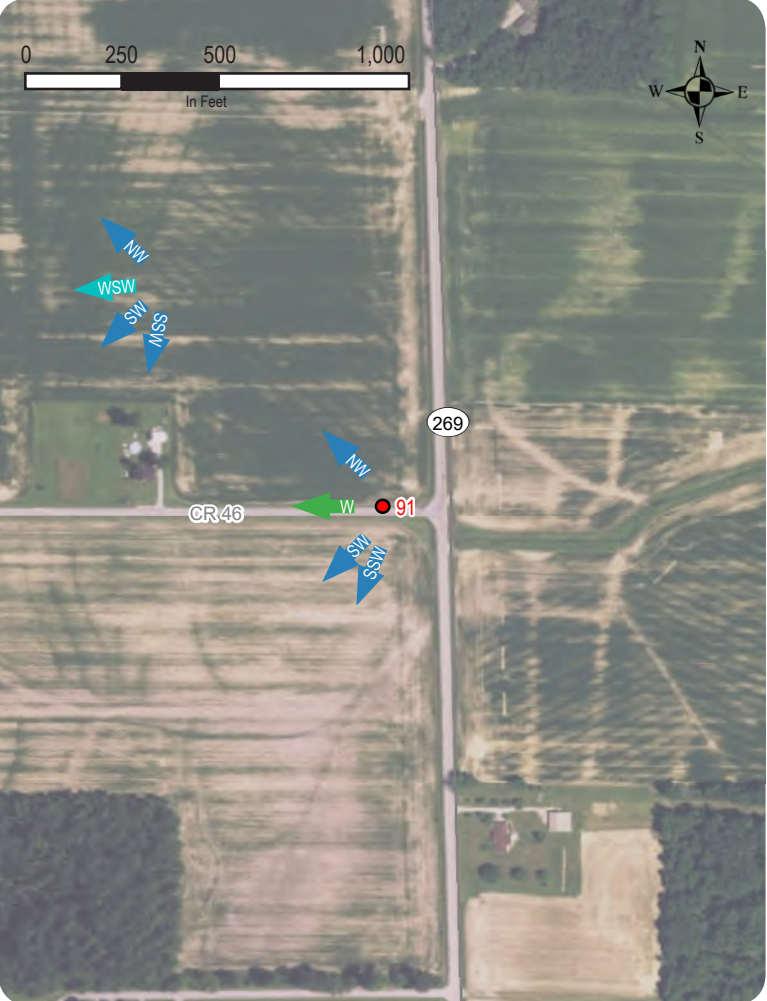
Project Information:

Model: Vestas V136
Hub Height: 367 feet (112 meters)
Rotor Diameter: 446 feet (136 meters)
Max. Height Above Ground Level: 591 feet (180 meters)
Number of Turbines in Project: 58 Turbines

Viewpoint Location



Viewpoint Context



Context Photo: View to the South-Southwest



Context Photo: View to the Southwest



Context Photo: View to the West



Context Photo: View to the Northwest

Republic Wind Project

Sandusky and Seneca Counties, Ohio

Appendix D: Viewpoint Information Sheet - Viewpoint 91

Existing Conditions





Appendix E

Typical Underground Collection System Photos



Photo 01

Buried interconnect installation



Photo 02

Typical trench associated with buried interconnect installation

Republic Wind Farm

Sandusky and Seneca Counties, Ohio

Appendix E: Typical Construction Photographs for Wind Energy Projects

Sheet 1 of 2



Photo 03

In-progress restoration of buried interconnect impact

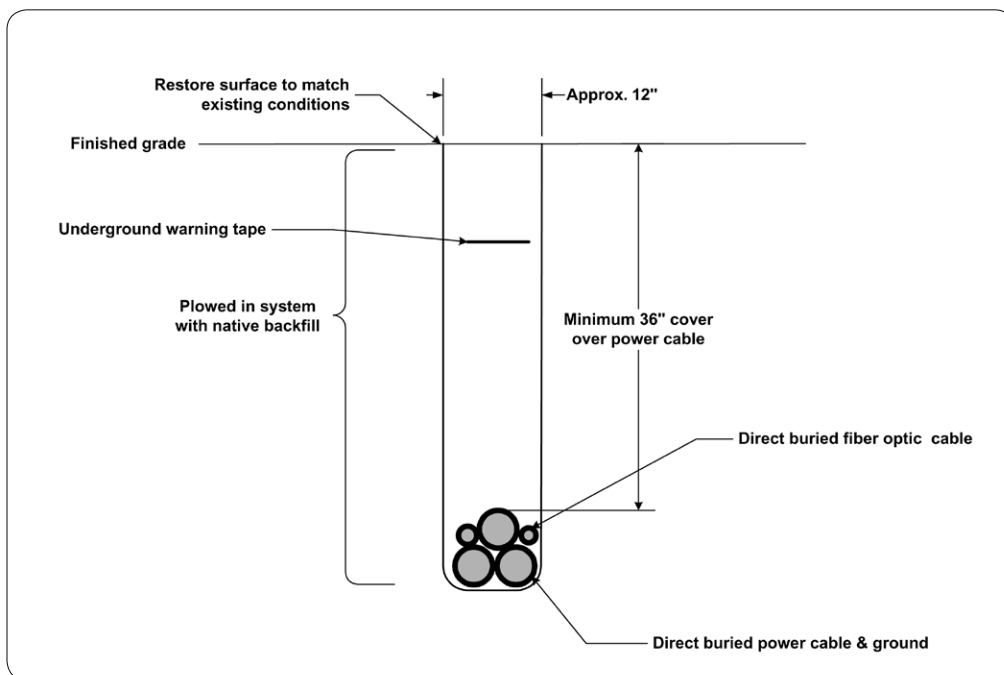


Photo 04

Buried interconnect typical detail

Republic Wind Farm

Sandusky and Seneca Counties, Ohio

Appendix E: Typical Construction Photographs for Wind Energy Projects

Sheet 2 of 2

This foregoing document was electronically filed with the Public Utilities

Commission of Ohio Docketing Information System on

2/2/2018 2:54:43 PM

in

Case No(s). 17-2295-EL-BGN

Summary: Application Exhibit AA Appendices electronically filed by Teresa Orahod on behalf of Sally W. Bloomfield