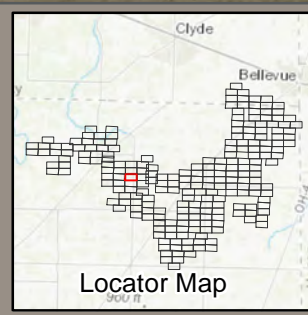
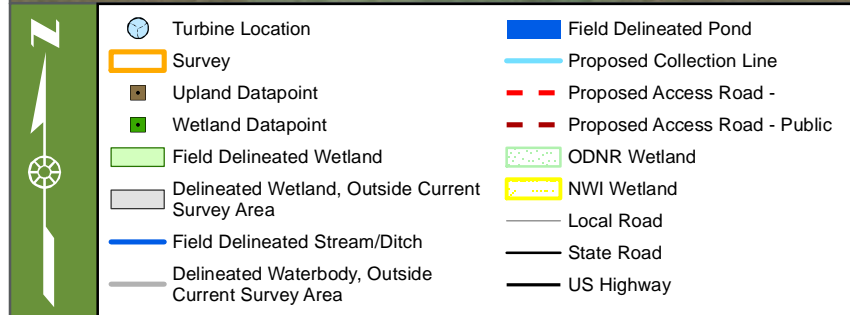
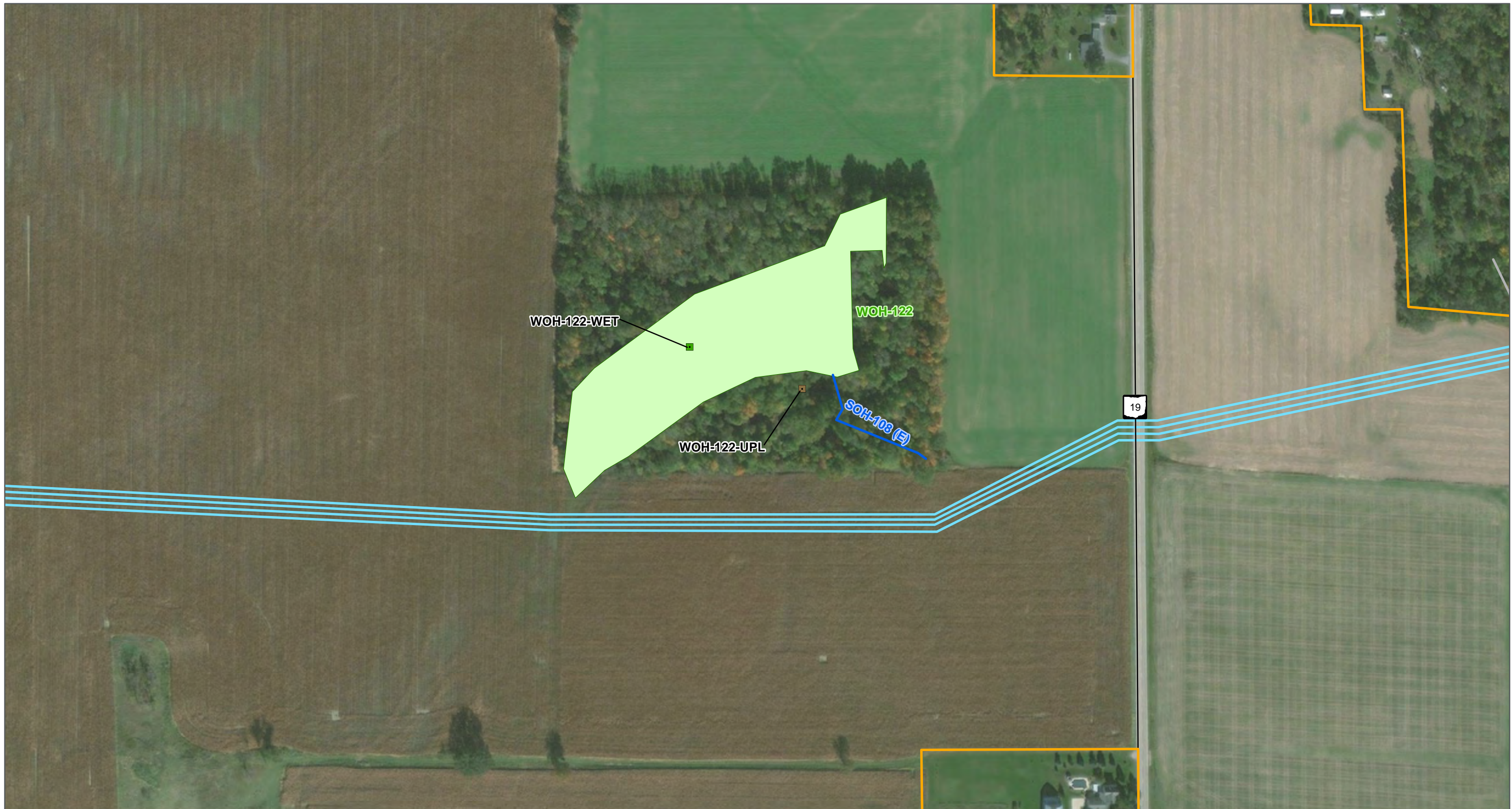


Wetland and Waterbody Maps (Sheet 117 of 226)

Republic Wind Project
Seneca and Sandusky Counties, OH



121 Continental Drive, Suite 308
Newark, DE 19713 USA
Phone (+1) 302-395-1919 Fax (+1) 302-395-1920
www.cardno.com



Wetland and Waterbody Maps (Sheet 118 of 226)

Republic Wind Project
Seneca and Sandusky Counties, OH



121 Continental Drive, Suite 308
Newark, DE 19713 USA
Phone (+1) 302-395-1919 Fax (+1) 302-395-1920
www.cardno.com



| | |
|---|-------------------------------|
| Turbine Location | Field Delineated Pond |
| Survey | Proposed Collection Line |
| Upland Datapoint | Proposed Access Road - |
| Wetland Datapoint | Proposed Access Road - Public |
| Field Delineated Wetland | ODNR Wetland |
| Delineated Wetland, Outside Current Survey Area | NWI Wetland |
| Field Delineated Stream/Ditch | Local Road |
| Delineated Waterbody, Outside Current Survey Area | State Road |
| | US Highway |

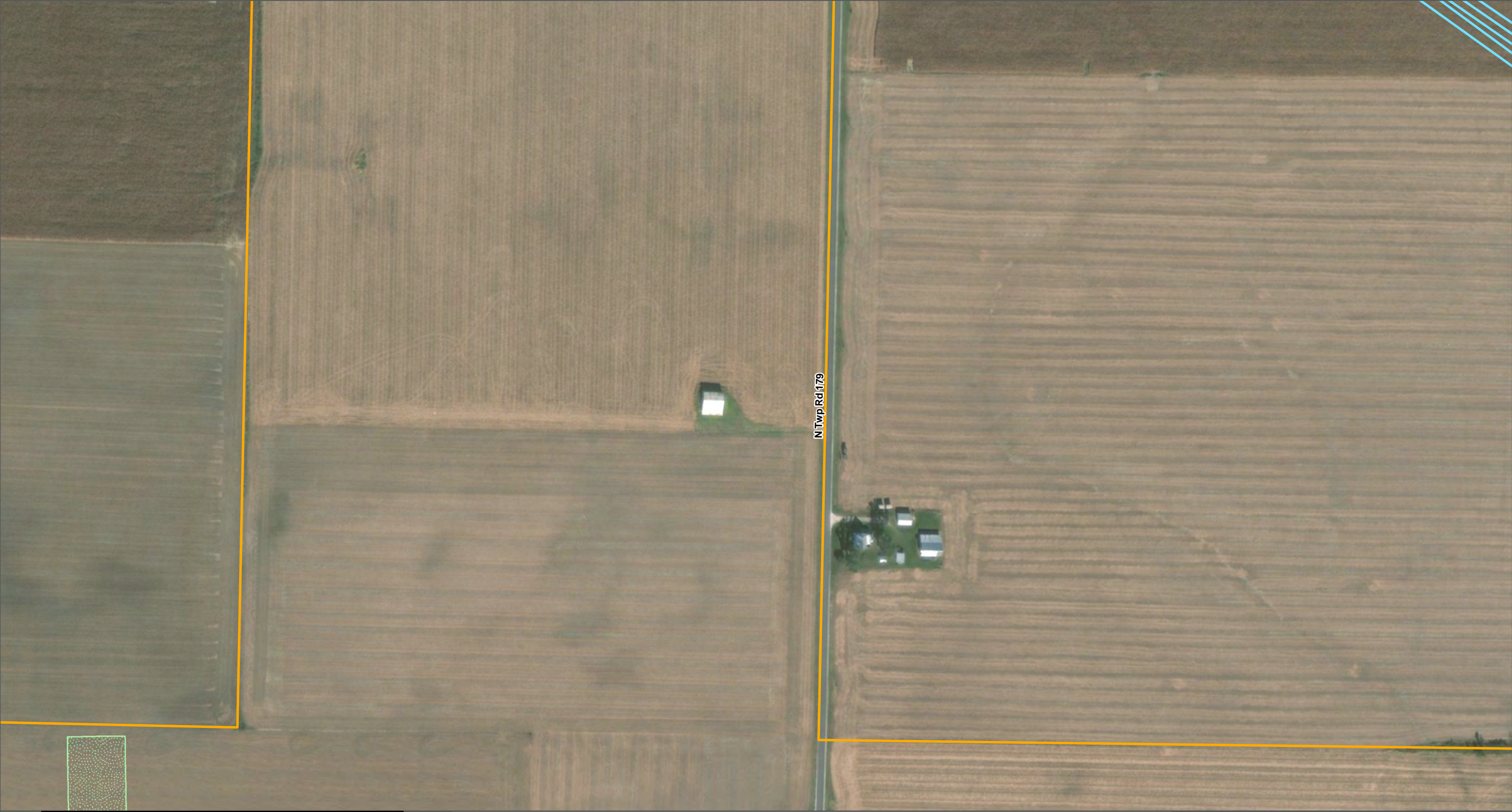


Wetland and Waterbody Maps
(Sheet 119 of 226)

Republic Wind Project
Seneca and Sandusky Counties, OH



121 Continental Drive, Suite 308
Newark, DE 19713 USA
Phone (+1) 302-395-1919 Fax (+1) 302-395-1920
www.cardno.com



| | |
|---|-------------------------------|
| Turbine Location | Field Delineated Pond |
| Survey | Proposed Collection Line |
| Upland Datapoint | Proposed Access Road - |
| Wetland Datapoint | Proposed Access Road - Public |
| Field Delineated Wetland | ODNR Wetland |
| Delineated Wetland, Outside Current Survey Area | NWI Wetland |
| Field Delineated Stream/Ditch | Local Road |
| Delineated Waterbody, Outside Current Survey Area | State Road |
| | US Highway |



Wetland and Waterbody Maps
(Sheet 120 of 226)

Republic Wind Project
Seneca and Sandusky Counties, OH



121 Continental Drive, Suite 308
Newark, DE 19713 USA
Phone (+1) 302-395-1919 Fax (+1) 302-395-1920
www.cardno.com





| | |
|---|---|
|  Turbine Location |  Field Delineated Pond |
|  Survey |  Proposed Collection Line |
|  Upland Datapoint |  Proposed Access Road - |
|  Wetland Datapoint |  Proposed Access Road - Public |
|  Field Delineated Wetland |  ODNR Wetland |
|  Delineated Wetland, Outside Current Survey Area |  NWI Wetland |
|  Field Delineated Stream/Ditch |  Local Road |
|  Delineated Waterbody, Outside Current Survey Area |  State Road |
| |  US Highway |

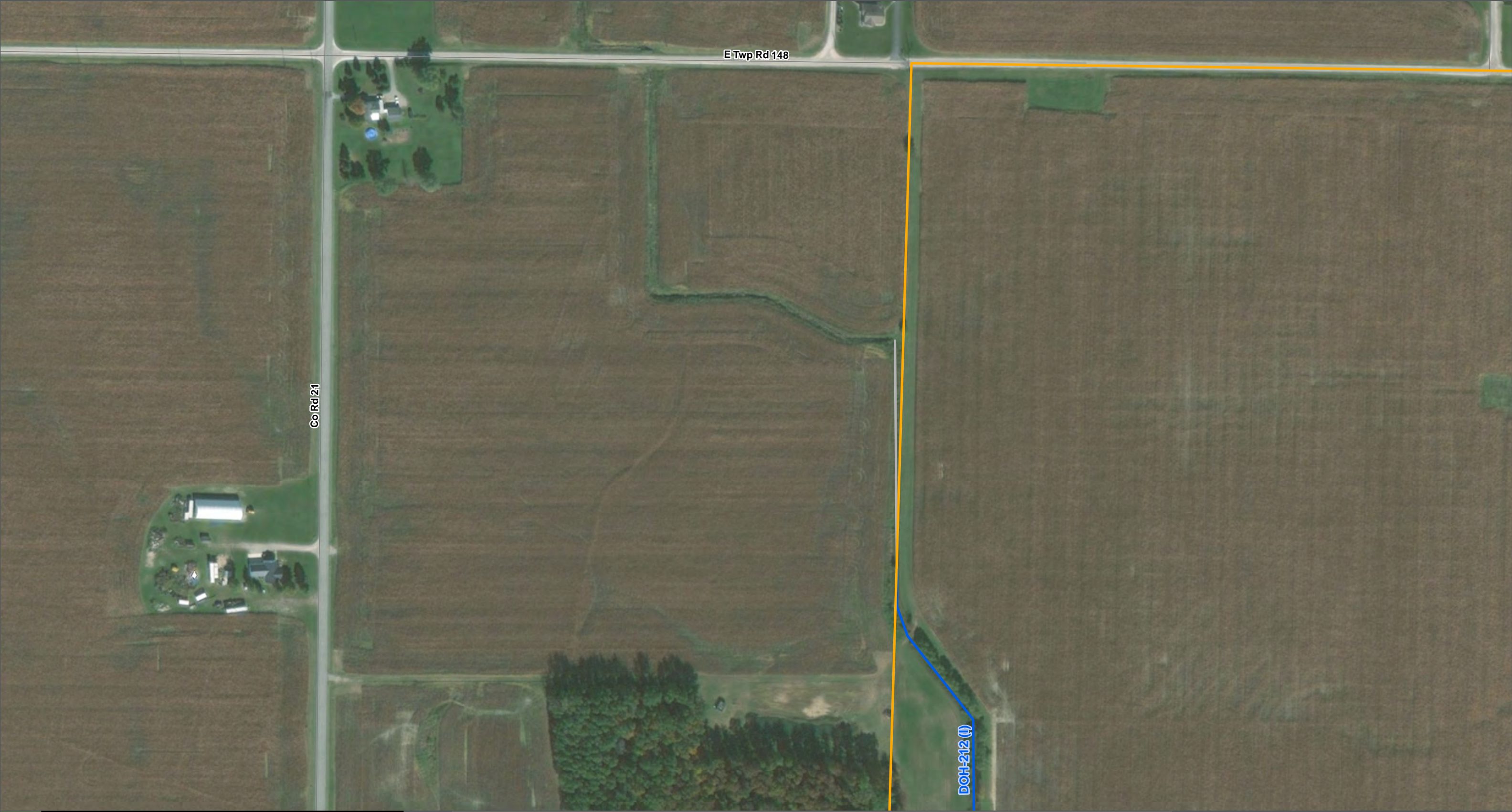


Wetland and Waterbody Maps
(Sheet 121 of 226)

Republic Wind Project
Seneca and Sandusky Counties, OH



121 Continental Drive, Suite 308
Newark, DE 19713 USA
Phone (+1) 302-395-1919 Fax (+1) 302-395-1920
www.cardno.com





| | |
|---|---|
|  Turbine Location |  Field Delineated Pond |
|  Survey |  Proposed Collection Line |
|  Upland Datapoint |  Proposed Access Road - |
|  Wetland Datapoint |  Proposed Access Road - Public |
|  Field Delineated Wetland |  ODNR Wetland |
|  Delineated Wetland, Outside Current Survey Area |  NWI Wetland |
|  Field Delineated Stream/Ditch |  Local Road |
|  Delineated Waterbody, Outside Current Survey Area |  State Road |
| |  US Highway |

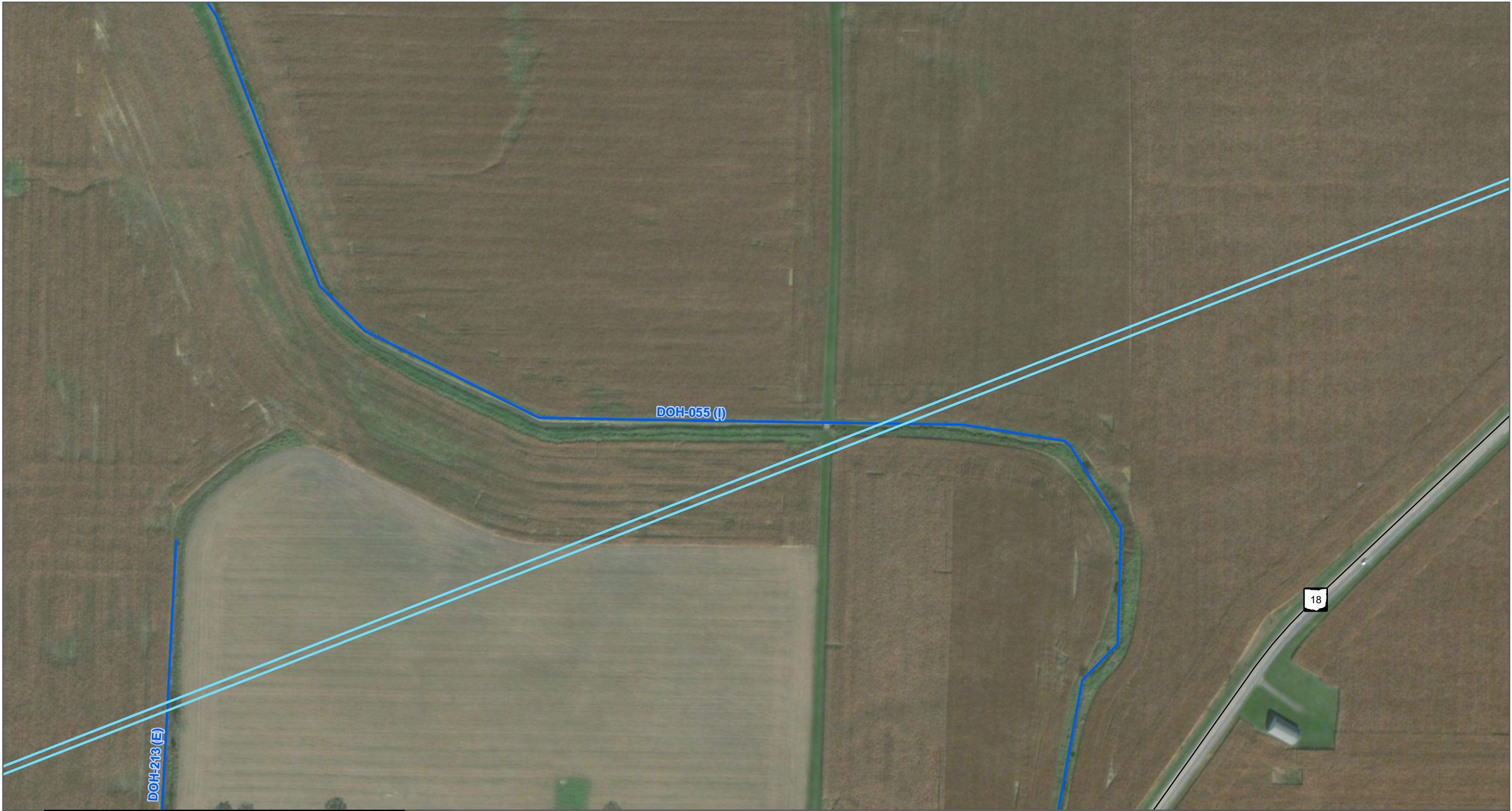



Wetland and Waterbody Maps (Sheet 122 of 226)





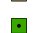






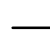





Republic Wind Project
Seneca and Sandusky Counties, OH




121 Continental Drive, Suite 308
Newark, DE 19713 USA
Phone (+1) 302-395-1919 Fax (+1) 302-395-1920
www.cardno.com






| | |
|---|--|
|  Turbine Location |  Field Delineated Pond |
|  Survey |  Proposed Collection Line |
|  Upland Datapoint |  Proposed Access Road - Private |
|  Wetland Datapoint |  Proposed Access Road - Public |
|  Field Delineated Wetland |  ODNR Wetland |
|  Delineated Wetland, Outside Current Survey Area |  NWI Wetland |
|  Field Delineated Stream/Ditch |  Local Road |
|  Delineated Waterbody, Outside Current Survey Area |  State Road |
| |  US Highway |




Locator Map

Wetland and Waterbody Maps (Sheet 123 of 226)


Republic Wind Project
Seneca and Sandusky Counties, OH



0 200 400 600 Feet




0 50 100 150 200 Meters




















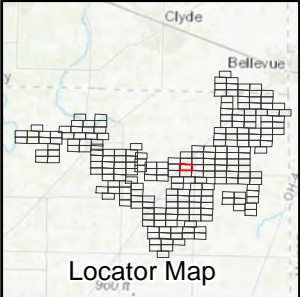
Cardno
Shaping the Future

121 Continental Drive, Suite 308
Newark, DE 19713 USA
Phone (+1) 302-395-1919 Fax (+1) 302-395-1920
www.cardno.com





| | |
|---|--|
|  Turbine Location |  Field Delineated Pond |
|  Survey |  Proposed Collection Line |
|  Upland Datapoint |  Proposed Access Road - Private |
|  Wetland Datapoint |  Proposed Access Road - Public |
|  Field Delineated Wetland |  ODNR Wetland |
|  Delineated Wetland, Outside Current Survey Area |  NWI Wetland |
|  Field Delineated Stream/Ditch |  Local Road |
|  Delineated Waterbody, Outside Current Survey Area |  State Road |
| |  US Highway |



Wetland and Waterbody Maps
(Sheet 124 of 226)

Republic Wind Project
Seneca and Sandusky Counties, OH

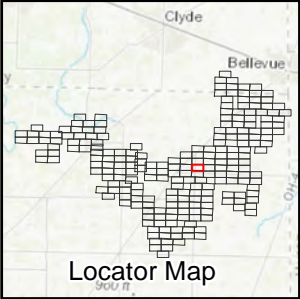


121 Continental Drive, Suite 308
Newark, DE 19713 USA
Phone (+1) 302-395-1919 Fax (+1) 302-395-1920
www.cardno.com





| | |
|---|---|
|  Turbine Location |  Field Delineated Pond |
|  Survey |  Proposed Collection Line |
|  Upland Datapoint |  Proposed Access Road - |
|  Wetland Datapoint |  Proposed Access Road - Public |
|  Field Delineated Wetland |  ODNR Wetland |
|  Delineated Wetland, Outside Current Survey Area |  NWI Wetland |
|  Field Delineated Stream/Ditch |  Local Road |
|  Delineated Waterbody, Outside Current Survey Area |  State Road |
| |  US Highway |



Wetland and Waterbody Maps
(Sheet 125 of 226)

Republic Wind Project
Seneca and Sandusky Counties, OH



121 Continental Drive, Suite 308
Newark, DE 19713 USA
Phone (+1) 302-395-1919 Fax (+1) 302-395-1920
www.cardno.com





| | |
|---|-------------------------------|
| Turbine Location | Field Delineated Pond |
| Survey | Proposed Collection Line |
| Upland Datapoint | Proposed Access Road - |
| Wetland Datapoint | Proposed Access Road - Public |
| Field Delineated Wetland | ODNR Wetland |
| Delineated Wetland, Outside Current Survey Area | NWI Wetland |
| Field Delineated Stream/Ditch | Local Road |
| Delineated Waterbody, Outside Current Survey Area | State Road |
| | US Highway |



Wetland and Waterbody Maps
(Sheet 126 of 226)

Republic Wind Project
Seneca and Sandusky Counties, OH



121 Continental Drive, Suite 308
Newark, DE 19713 USA
Phone (+1) 302-395-1919 Fax (+1) 302-395-1920
www.cardno.com

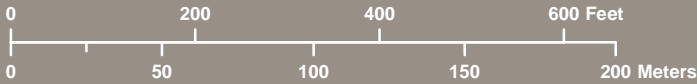


| | |
|---|-------------------------------|
| Turbine Location | Field Delineated Pond |
| Survey | Proposed Collection Line |
| Upland Datapoint | Proposed Access Road - |
| Wetland Datapoint | Proposed Access Road - Public |
| Field Delineated Wetland | ODNR Wetland |
| Delineated Wetland, Outside Current Survey Area | NWI Wetland |
| Field Delineated Stream/Ditch | Local Road |
| Delineated Waterbody, Outside Current Survey Area | State Road |
| | US Highway |



Wetland and Waterbody Maps
(Sheet 127 of 226)

Republic Wind Project
Seneca and Sandusky Counties, OH



121 Continental Drive, Suite 308
Newark, DE 19713 USA
Phone (+1) 302-395-1919 Fax (+1) 302-395-1920
www.cardno.com



| | |
|---|-------------------------------|
| Turbine Location | Field Delineated Pond |
| Survey | Proposed Collection Line |
| Upland Datapoint | Proposed Access Road - |
| Wetland Datapoint | Proposed Access Road - Public |
| Field Delineated Wetland | ODNR Wetland |
| Delineated Wetland, Outside Current Survey Area | NWI Wetland |
| Field Delineated Stream/Ditch | Local Road |
| Delineated Waterbody, Outside Current Survey Area | State Road |
| | US Highway |



Wetland and Waterbody Maps (Sheet 128 of 226)

Republic Wind Project
Seneca and Sandusky Counties, OH



121 Continental Drive, Suite 308
Newark, DE 19713 USA
Phone (+1) 302-395-1919 Fax (+1) 302-395-1920
www.cardno.com



Co Rd 29

Twp Rd 82

| | | | |
|--|---|--|-------------------------------|
| | Turbine Location | | Field Delineated Pond |
| | Survey | | Proposed Collection Line |
| | Upland Datapoint | | Proposed Access Road - |
| | Wetland Datapoint | | Proposed Access Road - Public |
| | Field Delineated Wetland | | ODNR Wetland |
| | Delineated Wetland, Outside Current Survey Area | | NWI Wetland |
| | Field Delineated Stream/Ditch | | Local Road |
| | Delineated Waterbody, Outside Current Survey Area | | State Road |
| | Field Delineated Stream/Ditch | | US Highway |




Wetland and Waterbody Maps
(Sheet 129 of 226)
















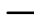

Republic Wind Project
Seneca and Sandusky Counties, OH



121 Continental Drive, Suite 308
Newark, DE 19713 USA
Phone (+1) 302-395-1919 Fax (+1) 302-395-1920
www.cardno.com



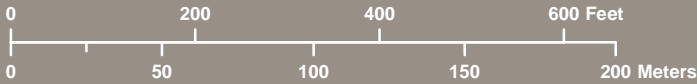


| | |
|---|---|
|  Turbine Location |  Field Delineated Pond |
|  Survey |  Proposed Collection Line |
|  Upland Datapoint |  Proposed Access Road - |
|  Wetland Datapoint |  Proposed Access Road - Public |
|  Field Delineated Wetland |  ODNR Wetland |
|  Delineated Wetland, Outside Current Survey Area |  NWI Wetland |
|  Field Delineated Stream/Ditch |  Local Road |
|  Delineated Waterbody, Outside Current Survey Area |  State Road |
| |  US Highway |

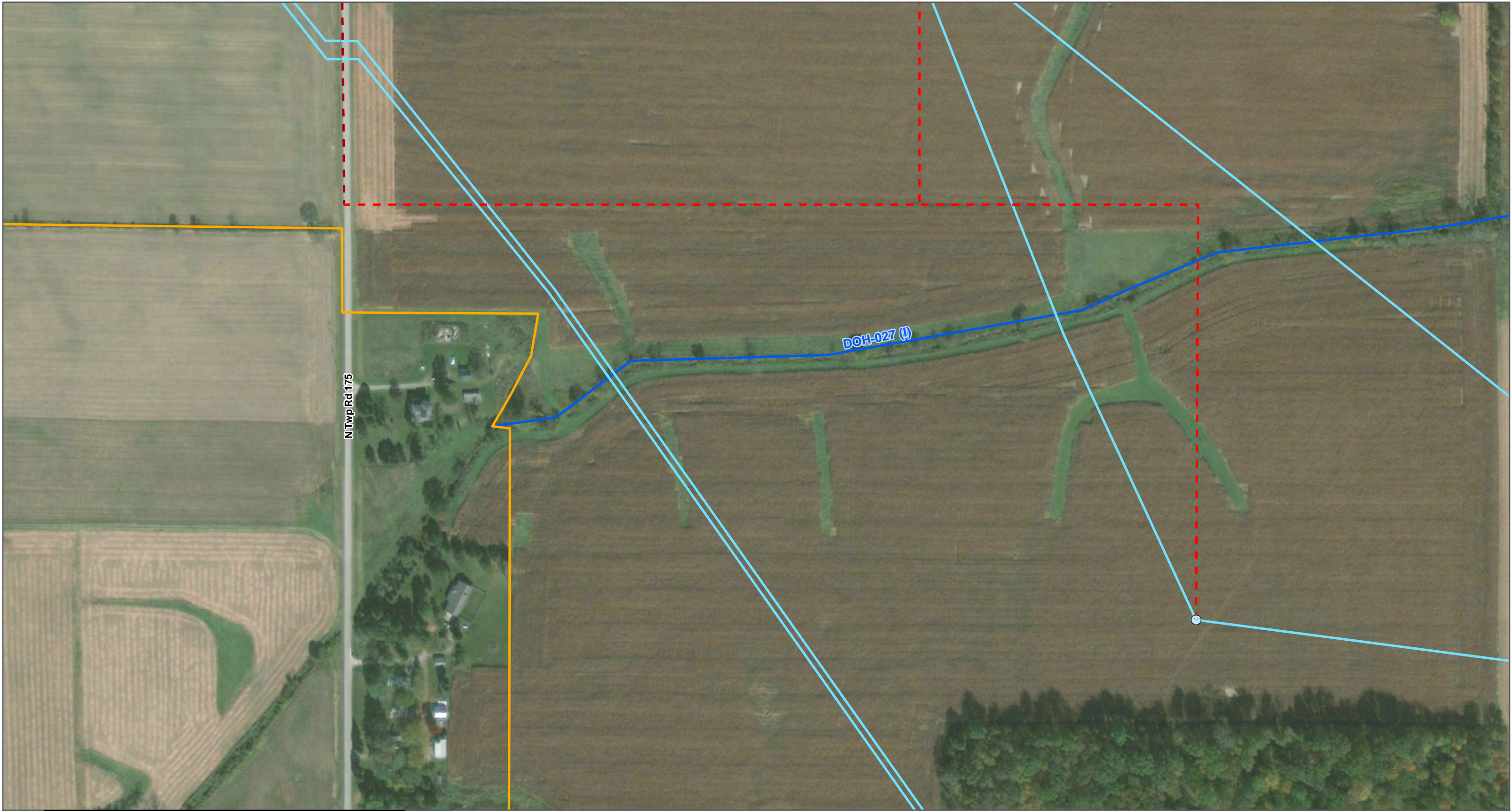



Wetland and Waterbody Maps
(Sheet 130 of 226)


















Republic Wind Project
Seneca and Sandusky Counties, OH



121 Continental Drive, Suite 308
Newark, DE 19713 USA
Phone (+1) 302-395-1919 Fax (+1) 302-395-1920
www.cardno.com





| | |
|---|---|
|  Turbine Location |  Field Delineated Pond |
|  Survey |  Proposed Collection Line |
|  Upland Datapoint |  Proposed Access Road - |
|  Wetland Datapoint |  Proposed Access Road - Public |
|  Field Delineated Wetland |  ODNR Wetland |
|  Delineated Wetland, Outside Current Survey Area |  NWI Wetland |
|  Field Delineated Stream/Ditch |  Local Road |
|  Delineated Waterbody, Outside Current Survey Area |  State Road |
| |  US Highway |

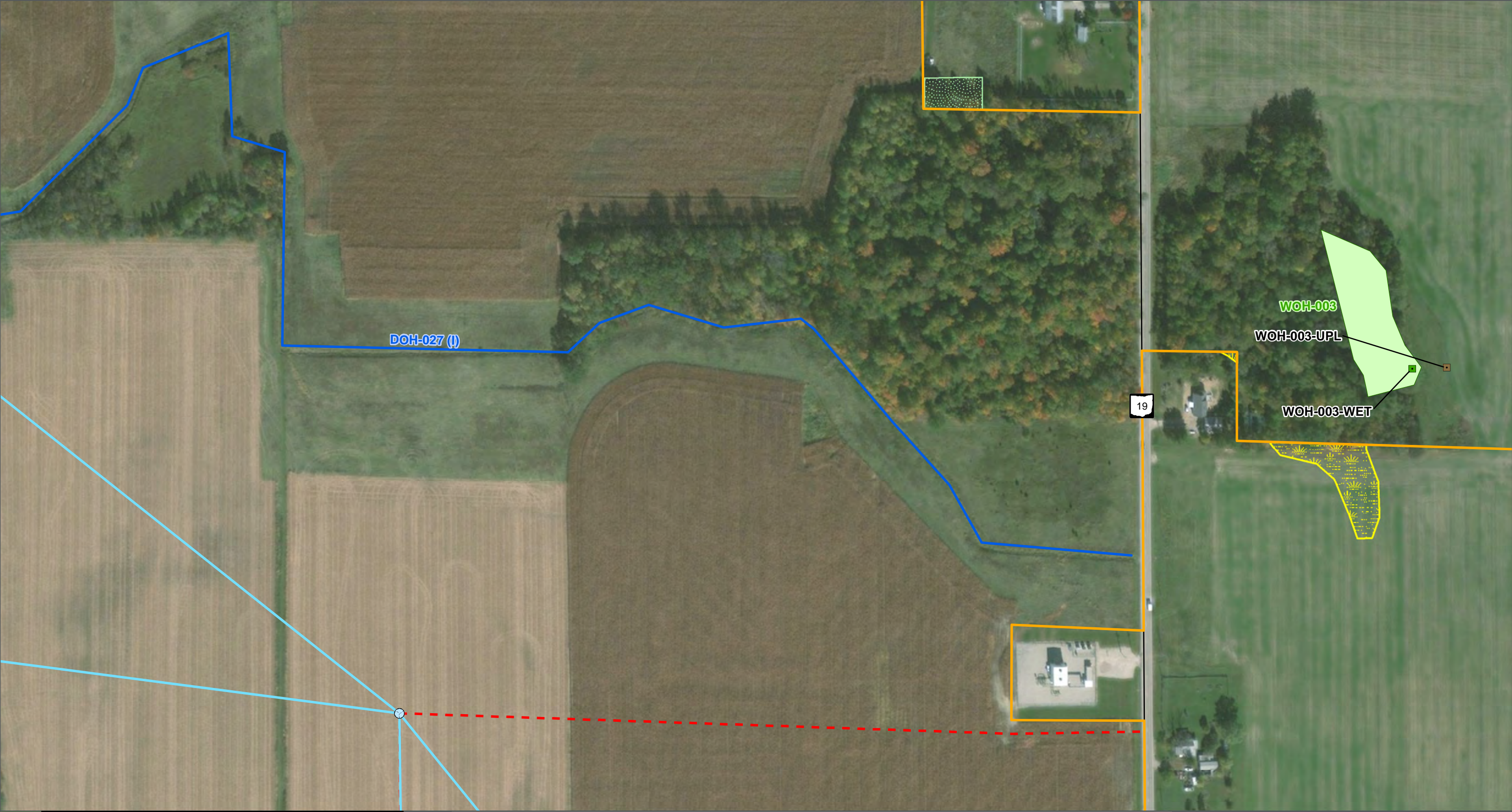


Wetland and Waterbody Maps
(Sheet 131 of 226)

Republic Wind Project
Seneca and Sandusky Counties, OH



121 Continental Drive, Suite 308
Newark, DE 19713 USA
Phone (+1) 302-395-1919 Fax (+1) 302-395-1920
www.cardno.com



| | |
|---|-------------------------------|
| Turbine Location | Field Delineated Pond |
| Survey | Proposed Collection Line |
| Upland Datapoint | Proposed Access Road - |
| Wetland Datapoint | Proposed Access Road - Public |
| Field Delineated Wetland | ODNR Wetland |
| Delineated Wetland, Outside Current Survey Area | NWI Wetland |
| Field Delineated Stream/Ditch | Local Road |
| Delineated Waterbody, Outside Current Survey Area | State Road |
| | US Highway |



Wetland and Waterbody Maps
(Sheet 132 of 226)

Republic Wind Project
Seneca and Sandusky Counties, OH



121 Continental Drive, Suite 308
Newark, DE 19713 USA
Phone (+1) 302-395-1919 Fax (+1) 302-395-1920
www.cardno.com



| | |
|---|-------------------------------|
| Turbine Location | Field Delineated Pond |
| Survey | Proposed Collection Line |
| Upland Datapoint | Proposed Access Road - |
| Wetland Datapoint | Proposed Access Road - Public |
| Field Delineated Wetland | ODNR Wetland |
| Delineated Wetland, Outside Current Survey Area | NWI Wetland |
| Field Delineated Stream/Ditch | Local Road |
| Delineated Waterbody, Outside Current Survey Area | State Road |
| | US Highway |



Wetland and Waterbody Maps
(Sheet 133 of 226)

Republic Wind Project
Seneca and Sandusky Counties, OH



121 Continental Drive, Suite 308
Newark, DE 19713 USA
Phone (+1) 302-395-1919 Fax (+1) 302-395-1920
www.cardno.com



| | |
|---|-------------------------------|
| Turbine Location | Field Delineated Pond |
| Survey | Proposed Collection Line |
| Upland Datapoint | Proposed Access Road - |
| Wetland Datapoint | Proposed Access Road - Public |
| Field Delineated Wetland | ODNR Wetland |
| Delineated Wetland, Outside Current Survey Area | NWI Wetland |
| Field Delineated Stream/Ditch | Local Road |
| Delineated Waterbody, Outside Current Survey Area | State Road |
| | US Highway |

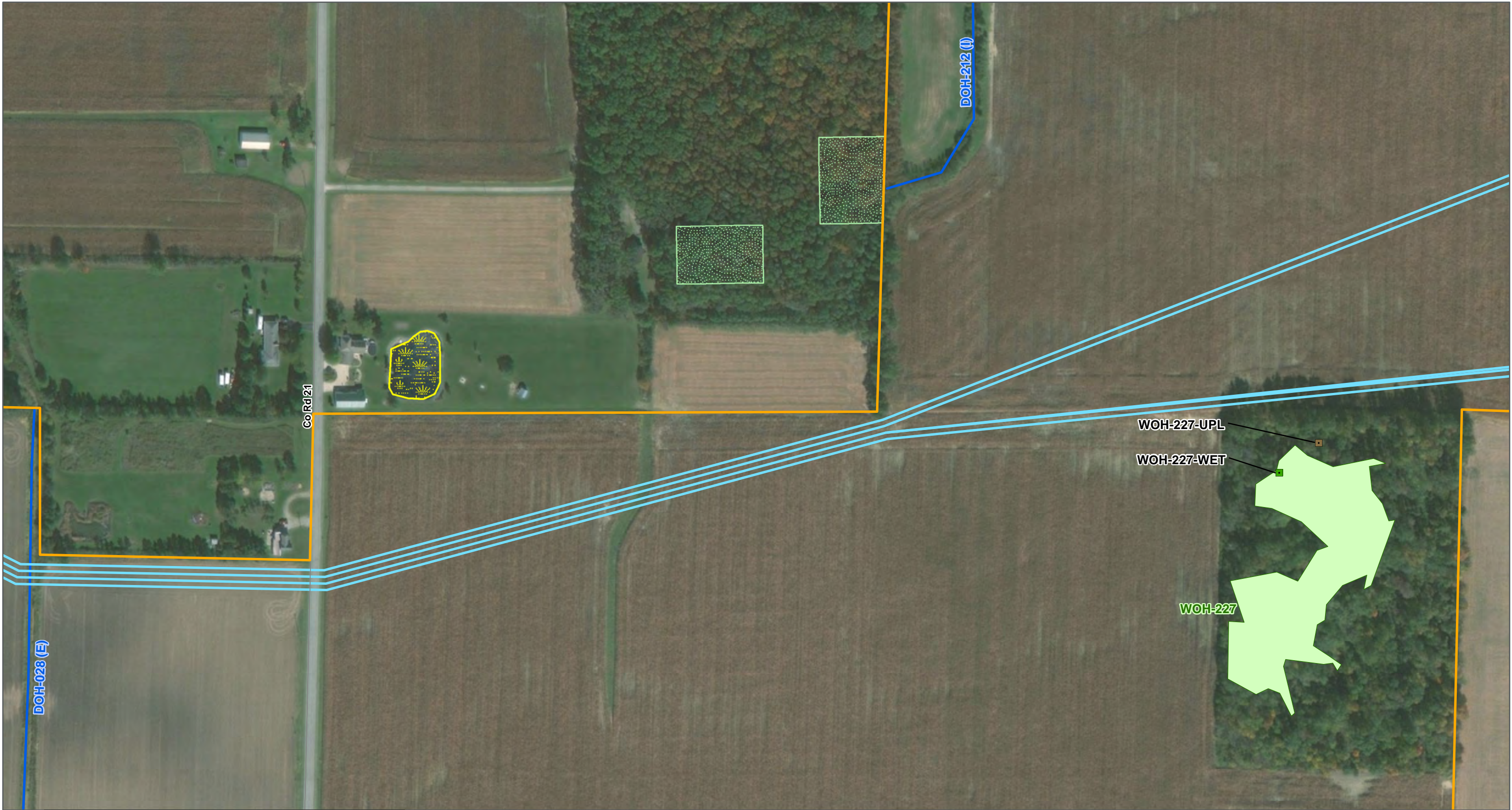



Wetland and Waterbody Maps
(Sheet 134 of 226)


















Republic Wind Project
Seneca and Sandusky Counties, OH



121 Continental Drive, Suite 308
Newark, DE 19713 USA
Phone (+1) 302-395-1919 Fax (+1) 302-395-1920
www.cardno.com





| | |
|---|---|
|  Turbine Location |  Field Delineated Pond |
|  Survey |  Proposed Collection Line |
|  Upland Datapoint |  Proposed Access Road - |
|  Wetland Datapoint |  Proposed Access Road - Public |
|  Field Delineated Wetland |  ODNR Wetland |
|  Delineated Wetland, Outside Current Survey Area |  NWI Wetland |
|  Field Delineated Stream/Ditch |  Local Road |
|  Delineated Waterbody, Outside Current Survey Area |  State Road |
| |  US Highway |

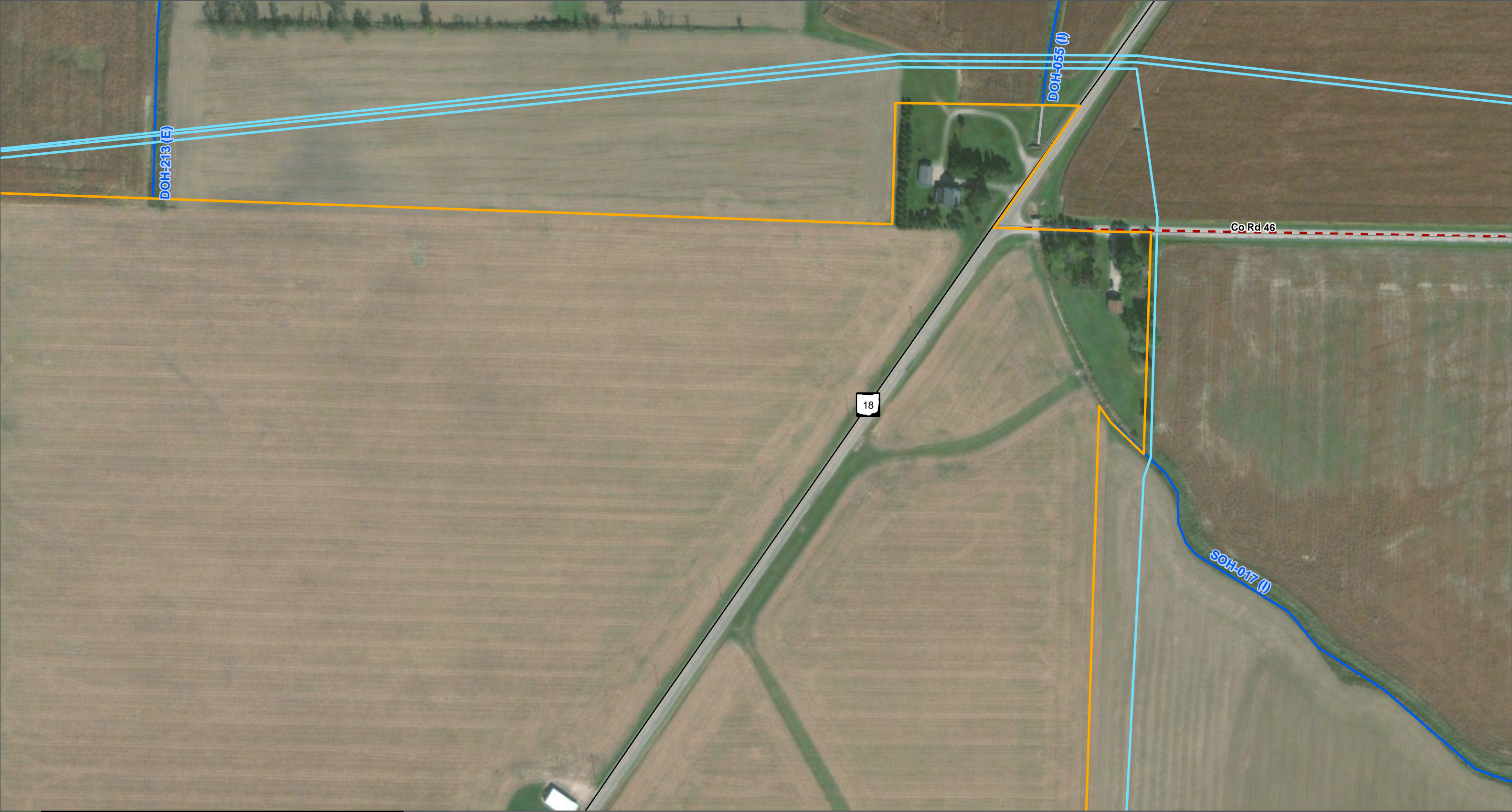


Wetland and Waterbody Maps (Sheet 135 of 226)


Republic Wind Project
Seneca and Sandusky Counties, OH



121 Continental Drive, Suite 308
Newark, DE 19713 USA
Phone (+1) 302-395-1919 Fax (+1) 302-395-1920
www.cardno.com





| | |
|---|---|
|  Turbine Location |  Field Delineated Pond |
|  Survey |  Proposed Collection Line |
|  Upland Datapoint |  Proposed Access Road - |
|  Wetland Datapoint |  Proposed Access Road - Public |
|  Field Delineated Wetland |  ODNR Wetland |
|  Delineated Wetland, Outside Current Survey Area |  NWI Wetland |
|  Field Delineated Stream/Ditch |  Local Road |
|  Delineated Waterbody, Outside Current Survey Area |  State Road |
| |  US Highway |



Wetland and Waterbody Maps
(Sheet 136 of 226)

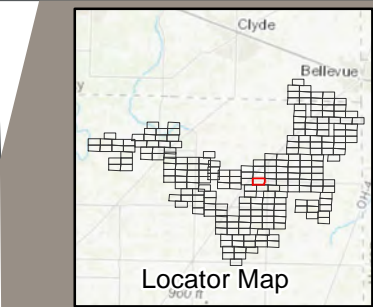
Republic Wind Project
Seneca and Sandusky Counties, OH



121 Continental Drive, Suite 308
Newark, DE 19713 USA
Phone (+1) 302-395-1919 Fax (+1) 302-395-1920
www.cardno.com



| | |
|---|-------------------------------|
| Turbine Location | Field Delineated Pond |
| Survey | Proposed Collection Line |
| Upland Datapoint | Proposed Access Road - |
| Wetland Datapoint | Proposed Access Road - Public |
| Field Delineated Wetland | ODNR Wetland |
| Delineated Wetland, Outside Current Survey Area | NWI Wetland |
| Field Delineated Stream/Ditch | Local Road |
| Delineated Waterbody, Outside Current Survey Area | State Road |
| | US Highway |

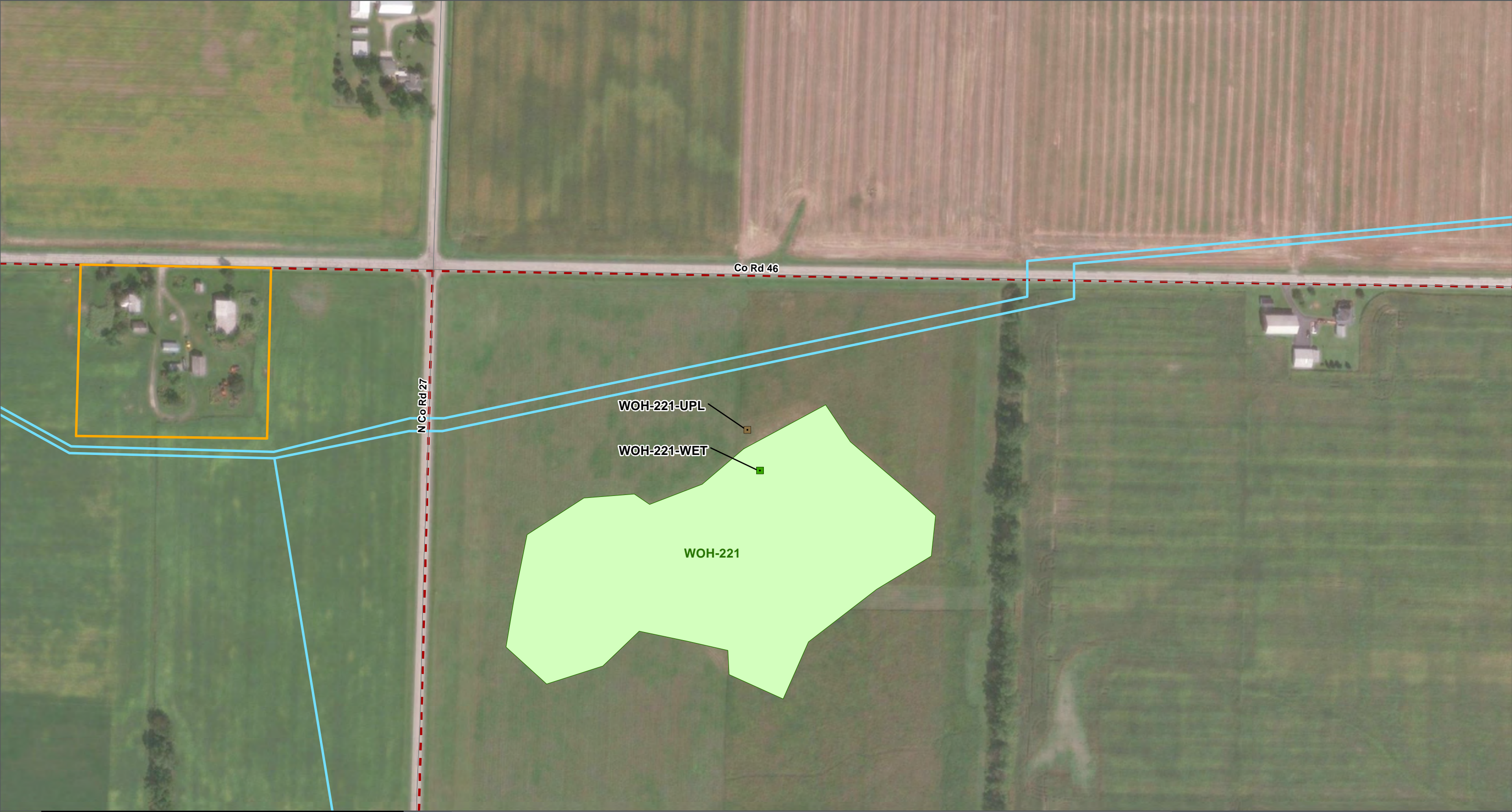


Wetland and Waterbody Maps
(Sheet 137 of 226)

Republic Wind Project
Seneca and Sandusky Counties, OH



121 Continental Drive, Suite 308
Newark, DE 19713 USA
Phone (+1) 302-395-1919 Fax (+1) 302-395-1920
www.cardno.com





| | |
|---|---|
|  Turbine Location |  Field Delineated Pond |
|  Survey |  Proposed Collection Line |
|  Upland Datapoint |  Proposed Access Road - |
|  Wetland Datapoint |  Proposed Access Road - Public |
|  Field Delineated Wetland |  ODNR Wetland |
|  Delineated Wetland, Outside Current Survey Area |  NWI Wetland |
|  Field Delineated Stream/Ditch |  Local Road |
|  Delineated Waterbody, Outside Current Survey Area |  State Road |
| |  US Highway |

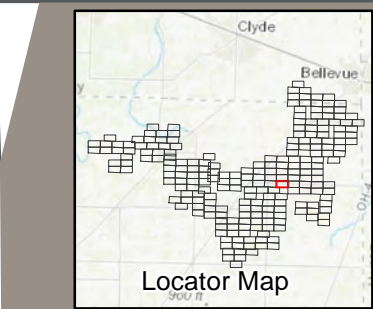
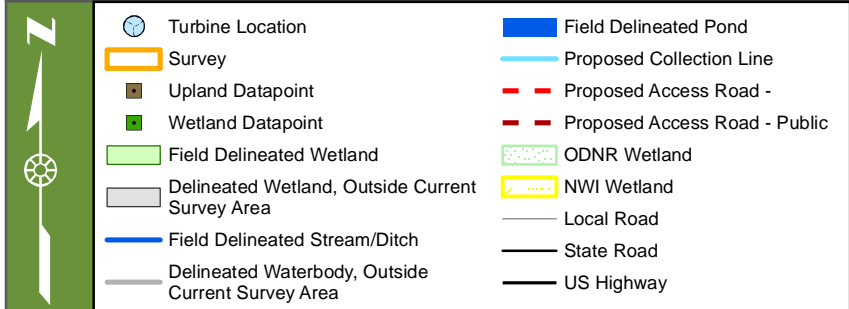


Wetland and Waterbody Maps (Sheet 138 of 226)

Republic Wind Project
Seneca and Sandusky Counties, OH



121 Continental Drive, Suite 308
Newark, DE 19713 USA
Phone (+1) 302-395-1919 Fax (+1) 302-395-1920
www.cardno.com

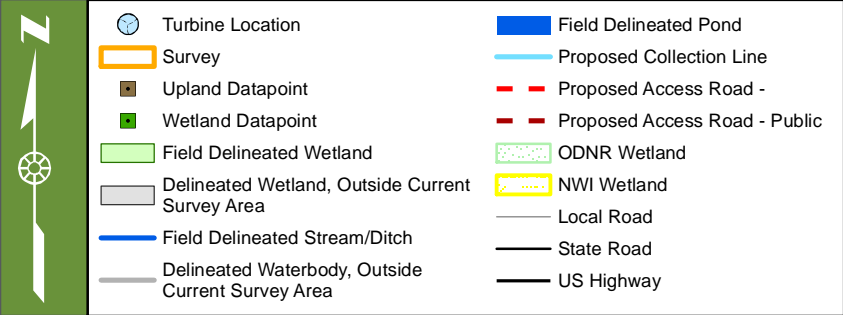


Wetland and Waterbody Maps (Sheet 139 of 226)

Republic Wind Project
Seneca and Sandusky Counties, OH



121 Continental Drive, Suite 308
Newark, DE 19713 USA
Phone (+1) 302-395-1919 Fax (+1) 302-395-1920
www.cardno.com



Wetland and Waterbody Maps (Sheet 140 of 226)

Republic Wind Project
Seneca and Sandusky Counties, OH



121 Continental Drive, Suite 308
Newark, DE 19713 USA
Phone (+1) 302-395-1919 Fax (+1) 302-395-1920
www.cardno.com

This foregoing document was electronically filed with the Public Utilities

Commission of Ohio Docketing Information System on

2/2/2018 2:18:11 PM

in

Case No(s). 17-2295-EL-BGN

Summary: Application Exhibit F Appendix H - Part 6 of 14 electronically filed by Teresa Orahod on behalf of Sally W. Bloomfield