



150 E. GAY STREET, 24<sup>TH</sup> FLOOR  
COLUMBUS, OH 43215-3192  
TELEPHONE: (614) 744-2570  
FACSIMILE: (844) 670-6009  
<http://www.dickinsonwright.com>

WILLIAM V. VORYS  
WVorys@dickinsonwright.com  
(614) 744-2936

October 27, 2017

Ms. Barcy F. McNeal, Secretary  
Ohio Power Siting Board  
Docketing Division  
180 East Broad Street, 11<sup>th</sup> Floor  
Columbus, OH 43215

**Re: Case No. 13-197-EL-BGN, 16-1687-EL-BGA, and 17-1099-EL-BGA  
Trishe Wind Ohio, LLC  
Update to September 1, 2017 Filing Regarding Compliance with  
Condition 6 – Drawings for Final Design Plan**

Dear Ms. McNeal:

Trishe Wind Ohio, LLC (“Applicant”) is certified to construct a wind-powered electric generation facility in Paulding County, Ohio (“Project”), in accordance with the December 16, 2013 Opinion, Order, and Certificate (“Certificate”) issued by the Ohio Power Siting Board.

Condition 6 of the Certificate requires the Applicant, at least 30 days prior to the preconstruction conference, to submit to staff for review and acceptance, one set of detailed engineering drawings of the final project design, including the facility, temporary and permanent access roads, and any crane routes, construction staging areas, and any other associated facilities and access points.

On September 1, 2017, Applicant filed a Notification of Compliance with Condition 6 of the Certificate. This filing included 60% of the civil construction plans for wind turbine generators, access roads, drainage, and erosion control for the Project. At this time, we are updating the September 1, 2017 filing to include the “issued for construction” plans for wind turbine generators, access roads, drainage and erosion control, which are attached hereto.

We are available, at your convenience, to answer any questions you may have.

Respectfully submitted,

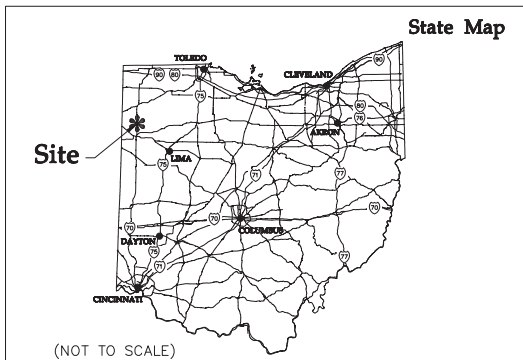
/s/ William V. Vorys

William V. Vorys (0093479)  
Christine M.T. Pirik (0029759)  
Terrence O'Donnell (0074213)  
Dickinson Wright PLLC  
150 East Gay Street, Suite 2400  
Columbus, Ohio 43215  
Phone: (614) 591-5461  
Email: [wvorys@dickinsonwright.com](mailto:wvorys@dickinsonwright.com)  
[cpirik@dickinsonwright.com](mailto:cpirik@dickinsonwright.com)  
[todonnell@dickinsonwright.com](mailto:todonnell@dickinsonwright.com)

Enclosure

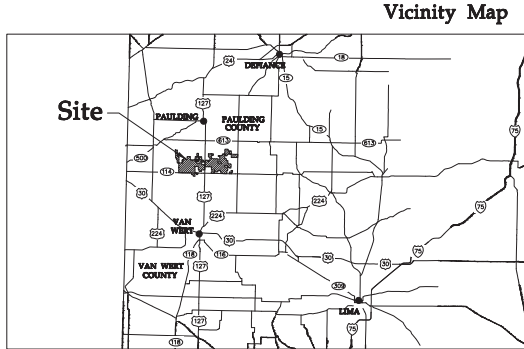
*Attorneys for Trishe Wind Ohio, LLC*

Issued for  
Construction Plans  
for  
Wind Turbine Generators,  
Access Roads, Drainage and  
Erosion Control  
for  
Northwest Ohio Wind Project  
Paulding, Ohio



NO.	DATE	REVISION	SUBS

DATA SET INFORMATION			
BASE FILE	FILE NAME / NOTES	PROVIDER	DATE
AERIAL IMAGE	Northwest_Ohio_Wind_Project.tif	ESRI	4/5/2013
DATA SURVEY/LAND-CONTRD	PAULDING COUNTY.dwg	Westwood	03/06/2017
TOPOGRAPHY	SPM-GAR-Thruout.dwg	State of Ohio	4/6/2013
TURBINE ARRAY	Ang_KDMS2_T-136_Turbin_Ohio_SPT_NAD83.shp	Starwood	8/11/2017
SPRING/RAINFALL COLLECTION	SPR/RAINCOLLECTION.dwg	Westwood	8/11/2017
STREAMS/WETLANDS	NRW_Ohio_WTUD_GPI_May2016Updated.shp	Westwood	5/30/2017



Sheet List Table	
Sheet Number	Sheet Title
1	Cover
2	Overall Civil Site Plan
3	Construction Details
4	Construction Details
5	Construction Details
6	Construction Details
7	Construction Details
8	Construction Details
9	Construction Notes
10	Civil Site Plan T-01
11	Civil Site Plan T-48, T-49, T-50
12	Civil Site Plan T-2, T-3, T-4
13	Civil Site Plan T-13, T-14
14	Civil Site Plan T-20
15	Civil Site Plan T-31
16	Civil Site Plan T-41, T-42, T-43
17	Civil Site Plan T-05
18	Civil Site Plan T-06, T-07, T-08
19	Civil Site Plan T-10, T-16
20	Civil Site Plan T-21, T-22, T-23
21	Civil Site Plan T-26, T-27, T-28
22	Civil Site Plan T-32, T-33, T-34
23	Civil Site Plan T-36, T-37
24	Civil Site Plan T-44, T-45
25	Civil Site Plan T-09, T-10
26	Civil Site Plan T-17
27	Civil Site Plan T-24, T-25
28	Civil Site Plan T-29
29	Civil Site Plan T-38, T-40
30	Civil Site Plan T-46
31	Civil Site Plan
32	Turbine Delivery and Public Intersection Plan
33	Concrete Road Route Plan
34	Aggregate Road Route Plan

**Westwood**  
Professional Services, Inc.  
10-18-2017

**Northwest Ohio Wind Project**  
Paulding, Ohio

**WHITE**  
ENGINEERS  
200 E. White Ave  
Chiles, IN 47522

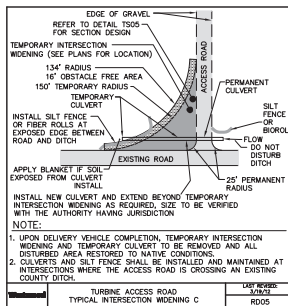
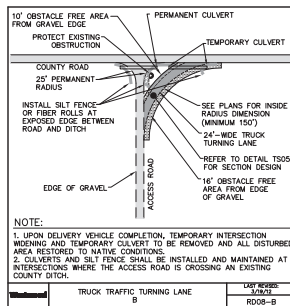
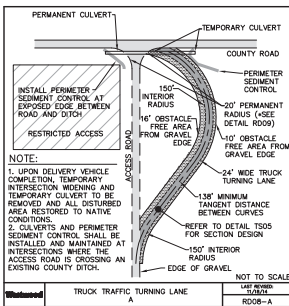
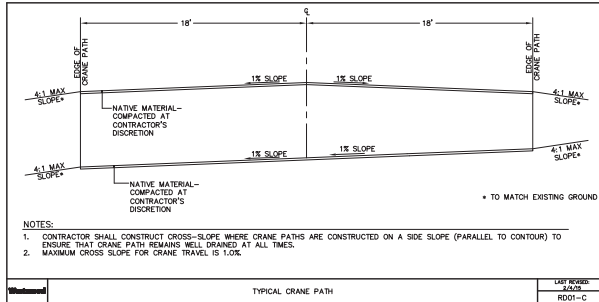
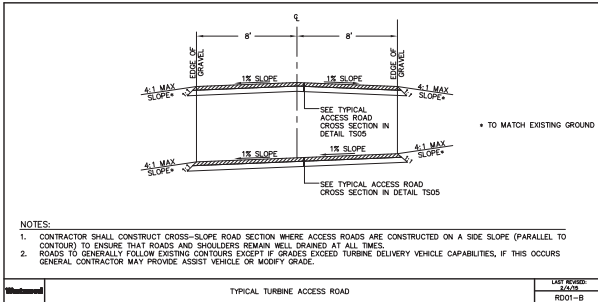
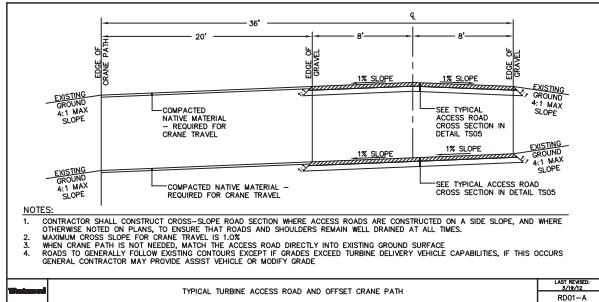
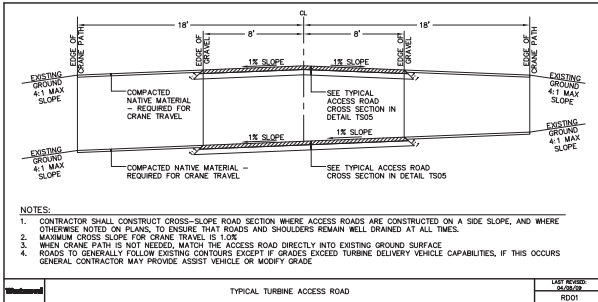
**Trillium Wind Ohio, LLC**  
c/o Raymond Energy Group, LLC  
9 Greenwich Office Park, 2nd Floor  
Greenwich, CT 06830

**Northwest Ohio Wind Project**  
Paulding, Ohio

Cover

Issued For Construction  
Army Updated: 09/18/2017  
Date: 10/18/2017  
Sheet: 1 of 34





**Westwood**

Westwood Professional Services, Inc.  
1000 E. 12th Ave  
Chattanooga, TN 37403  
423.242.1000  
www.westwoodps.com



Drawn:	SSD
Checked:	SSD
Issued:	SSD
As-Built Drawing:	
Revisions:	
1. Date: 08/01/17	SSD
2. Date: 08/01/17	SSD
3. Date: 08/01/17	SSD
4. Date: 08/01/17	SSD
5. Date: 08/01/17	SSD
6. Date: 08/01/17	SSD
7. Date: 08/01/17	SSD
8. Date: 08/01/17	SSD
9. Date: 08/01/17	SSD
10. Date: 08/01/17	SSD

Prepared for:



200 E. 12th Ave  
Chattanooga, TN 37403

White Wind Ohio, LLC  
c/o Barnwell Energy Group, LLC  
9 Greenfield Office Park, 2nd Floor  
Chattanooga, TN 37403

## Northwest Ohio Wind Project

Paulding, Ohio

### Construction Details

Issued For Construction

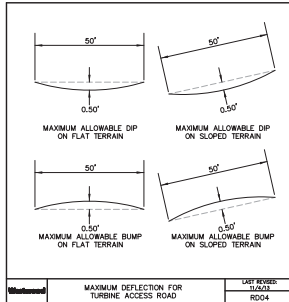
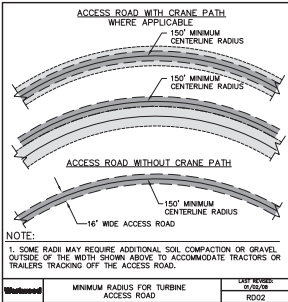
Army Updated: 08/18/2017

Date: 10/18/2017

Sheet: 5 of 34

002718-002701.dwg

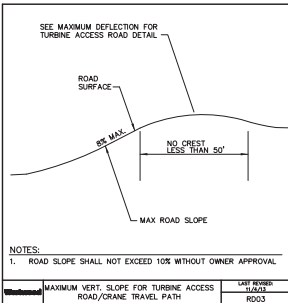
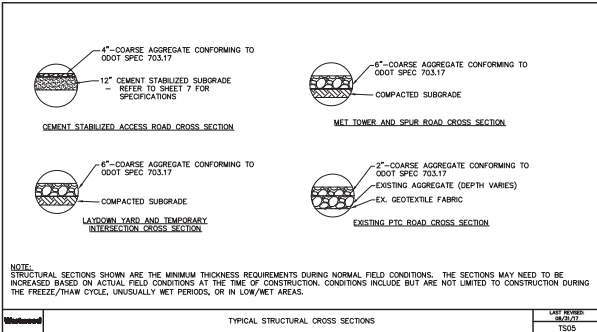




Material	Diameter	Location	Length	Perm. Temp.	String Method
CMP	12"	Entrance to T-04	40	Permanent	Installed
CMP	24"	Entrance to T-05	40	Permanent	2 year 24 hour storm event
CMP	36"	Entrance to T-06	40	Permanent	Match Downstream Culvert
CMP	36"	Entrance to T-07	40	Permanent	Match Downstream Culvert
CMP	18"	Entrance to T-09	40	Permanent	2 year 24 hour storm event
CMP	15"	Entrance to T-10	40	Permanent	2 year 24 hour storm event
CMP	24"	Entrance to T-14	60	Permanent	2 year 24 hour storm event
CMP	15"	Entrance to T-20	40	Permanent	2 year 24 hour storm event
CMP	15"	Entrance to T-39	40	Permanent	Match Downstream Culvert
CMP	15"	Entrance to T-40	40	Permanent	Minimum Size
CMP	18"	Entrance to T-42	40	Permanent	Match Existing
CMP	18"	Entrance to T-43	40	Permanent	Match Existing
CMP	15"	Entrance to T-46	50	Permanent	Match Existing
CMP	18"	Entrance to T-49	40	Permanent	Match Existing
CMP	48"	Entrance to T-50	40	Permanent	Match Upstream Culvert
TRD	Match Existing	T-17 Access Road	20	Permanent (Extend Existing)	Match Existing
TRD	Match Existing	T-22 Access Road	30	Permanent (Extend Existing)	Match Existing
CMP	Match Existing	T-49 Access Road	20	Permanent (Extend Existing)	Match Existing
CMP	60"	Crane walk between T-02 and T-03	70	Temporary	Match Downstream Culvert
CMP	15"	Crane walk east of T-30 at Co. Rd 87	70	Temporary	1 year 24 hour storm event
CMP	24"	Crane walk west of T-14 entrance	60	Temporary	Match Downstream Culvert
CMP	60"	Crane walk between T-13 and T-16	75	Temporary	1 year 24 hour storm event
CMP	30"	Crane walk south of T-36	85	Temporary	1 year 24 hour storm event
CMP	48"	Crane walk between T-22 and T-24 (Southwest of T-22)	62	Temporary	Match Upstream Culvert
CMP	54"	Crane walk between T-23 and T-28	60	Temporary	Match Downstream Culvert
CMP	15"	Crane walk north of T-24	60	Temporary	Minimum Size
CMP	36"	Crane walk between T-24 and T-33 (East of T-28)	65	Temporary	Match Downstream Culvert
CMP	42"	Crane walk between T-29 and T-33 (West of T-33)	65	Temporary	Match Downstream Culvert
CMP	42"	Crane walk west of T-35	60	Temporary	Match Downstream Culvert
CMP	54"	Crane walk between T-37 and T-39	70	Temporary	Match Downstream Culvert
CMP	54"	Crane walk north of T-39	85	Temporary	Upstream from Upstream Culvert
CMP	11.4"	Crane walk north of T-39	100	Temporary	1 year 24 hour storm event
CMP	15"	Crane walk between T-43 and T-44	50	Temporary	Minimum Size
HOPE	15"	Entrance to T-44 Co. Rd 80 Extension	10	Temporary	Match Existing
CMP	15"	Crane walk east of T-45 entrance	60	Temporary	Match Upstream Culvert
CMP	12"	Entrance to T-04	75	Temporary	Match Existing
CMP	24"	Entrance to T-05	80	Temporary	2 year 24 hour storm event
CMP	36"	Entrance to T-06	40	Temporary	Match Downstream Culvert
CMP	36"	Entrance to T-07	60	Temporary	Match Downstream Culvert
CMP	18"	Entrance to T-09	75	Temporary	2 year 24 hour storm event
CMP	15"	Entrance to T-10	90	Temporary	2 year 24 hour storm event
CMP	24"	Entrance to T-14	85	Temporary	2 year 24 hour storm event
CMP	15"	Entrance to T-20	85	Temporary	2 year 24 hour storm event
CMP	42"	Entrance to T-33	55	Temporary	Match Upstream Culvert
CMP	15"	Entrance to T-39	85	Temporary	Match Downstream Culvert
CMP	15"	Entrance to T-40	75	Temporary	Minimum Size
CMP	18"	Entrance to T-42	75	Temporary	Match Existing
CMP	18"	Entrance to T-43	75	Temporary	Match Existing
CMP	15"	Entrance to T-46	75	Temporary	Match Existing
CMP	18"	Entrance to T-49	80	Temporary	Match Existing
CMP	48"	Entrance to T-50	75	Temporary	Match Existing
CMP	48"	Entrance to T-02	85	Temporary (Extend Existing)	Match Existing
HOPE	12"	Entrance to T-15	10	Temporary (Extend Existing)	Match Existing
CMP	30"	Entrance to T-15 (East/West of T-15)	85	Temporary (Extend Existing)	Match Existing
CMP	60"	Entrance to T-17 (South)	90	Temporary (Extend Existing)	Match Existing
CMP	Match Existing	Entrance to T-28	75	Temporary (Extend Existing)	Match Existing
CMP	12"	Entrance to T-33	85	Temporary (Extend Existing)	Match Existing
HOPE	18"	Entrance to T-49	10	Temporary (Extend Existing)	Match Existing

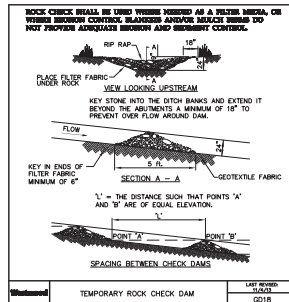
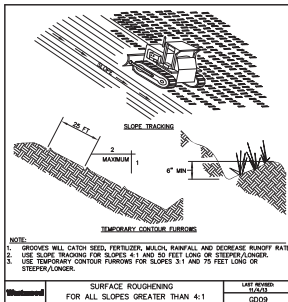
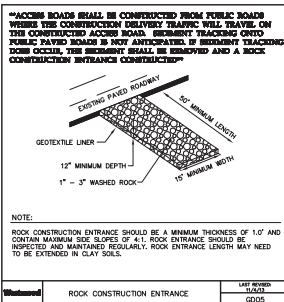
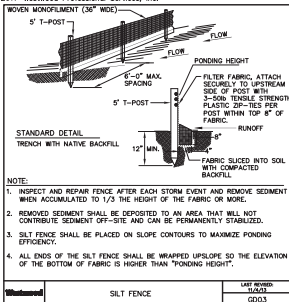
CULVERT TABLE

DATE 09/19/2017

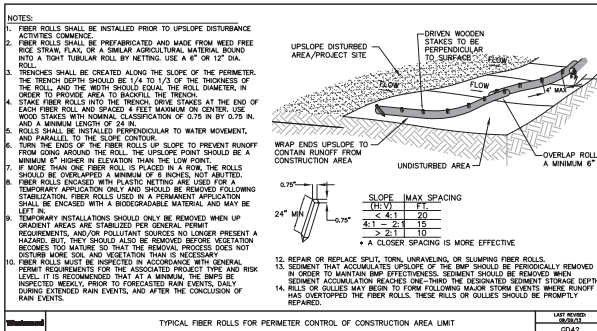
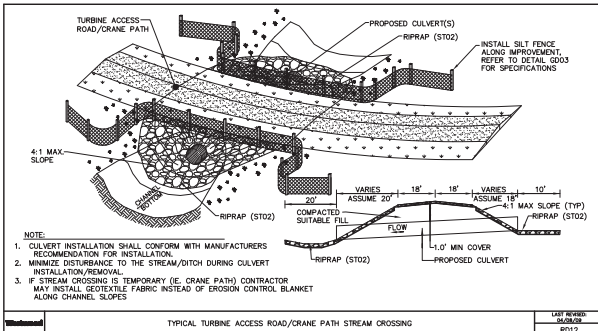
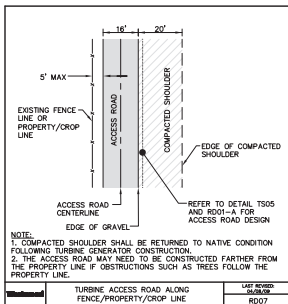
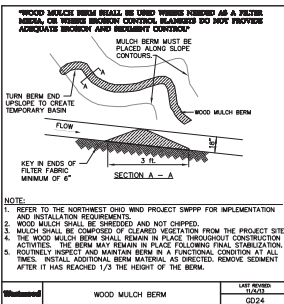
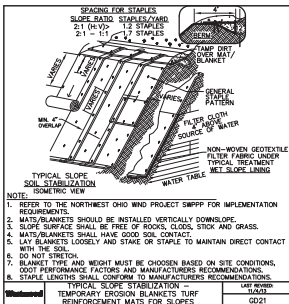


## Westwood

Westwood Professional Services, Inc.  
1000 E. White Ave.  
Cheney, NH 03014  
603.887.0000  
603.887.0001  
603.887.0002  
603.887.0003  
603.887.0004  
603.887.0005  
603.887.0006  
603.887.0007  
603.887.0008  
603.887.0009  
603.887.0010  
603.887.0011  
603.887.0012  
603.887.0013  
603.887.0014  
603.887.0015  
603.887.0016  
603.887.0017  
603.887.0018  
603.887.0019  
603.887.0020  
603.887.0021  
603.887.0022  
603.887.0023  
603.887.0024  
603.887.0025  
603.887.0026  
603.887.0027  
603.887.0028  
603.887.0029  
603.887.0030  
603.887.0031  
603.887.0032  
603.887.0033  
603.887.0034  
603.887.0035  
603.887.0036  
603.887.0037  
603.887.0038  
603.887.0039  
603.887.0040  
603.887.0041  
603.887.0042  
603.887.0043  
603.887.0044  
603.887.0045  
603.887.0046  
603.887.0047  
603.887.0048  
603.887.0049  
603.887.0050  
603.887.0051  
603.887.0052  
603.887.0053  
603.887.0054  
603.887.0055  
603.887.0056  
603.887.0057  
603.887.0058  
603.887.0059  
603.887.0060  
603.887.0061  
603.887.0062  
603.887.0063  
603.887.0064  
603.887.0065  
603.887.0066  
603.887.0067  
603.887.0068  
603.887.0069  
603.887.0070  
603.887.0071  
603.887.0072  
603.887.0073  
603.887.0074  
603.887.0075  
603.887.0076  
603.887.0077  
603.887.0078  
603.887.0079  
603.887.0080  
603.887.0081  
603.887.0082  
603.887.0083  
603.887.0084  
603.887.0085  
603.887.0086  
603.887.0087  
603.887.0088  
603.887.0089  
603.887.0090  
603.887.0091  
603.887.0092  
603.887.0093  
603.887.0094  
603.887.0095  
603.887.0096  
603.887.0097  
603.887.0098  
603.887.0099  
603.887.0100  
603.887.0101  
603.887.0102  
603.887.0103  
603.887.0104  
603.887.0105  
603.887.0106  
603.887.0107  
603.887.0108  
603.887.0109  
603.887.0110  
603.887.0111  
603.887.0112  
603.887.0113  
603.887.0114  
603.887.0115  
603.887.0116  
603.887.0117  
603.887.0118  
603.887.0119  
603.887.0120  
603.887.0121  
603.887.0122  
603.887.0123  
603.887.0124  
603.887.0125  
603.887.0126  
603.887.0127  
603.887.0128  
603.887.0129  
603.887.0130  
603.887.0131  
603.887.0132  
603.887.0133  
603.887.0134  
603.887.0135  
603.887.0136  
603.887.0137  
603.887.0138  
603.887.0139  
603.887.0140  
603.887.0141  
603.887.0142  
603.887.0143  
603.887.0144  
603.887.0145  
603.887.0146  
603.887.0147  
603.887.0148  
603.887.0149  
603.887.0150  
603.887.0151  
603.887.0152  
603.887.0153  
603.887.0154  
603.887.0155  
603.887.0156  
603.887.0157  
603.887.0158  
603.887.0159  
603.887.0160  
603.887.0161  
603.887.0162  
603.887.0163  
603.887.0164  
603.887.0165  
603.887.0166  
603.887.0167  
603.887.0168  
603.887.0169  
603.887.0170  
603.887.0171  
603.887.0172  
603.887.0173  
603.887.0174  
603.887.0175  
603.887.0176  
603.887.0177  
603.887.0178  
603.887.0179  
603.887.0180  
603.887.0181  
603.887.0182  
603.887.0183  
603.887.0184  
603.887.0185  
603.887.0186  
603.887.0187  
603.887.0188  
603.887.0189  
603.887.0190  
603.887.0191  
603.887.0192  
603.887.0193  
603.887.0194  
603.887.0195  
603.887.0196  
603.887.0197  
603.887.0198  
603.887.0199  
603.887.0200  
603.887.0201  
603.887.0202  
603.887.0203  
603.887.0204  
603.887.0205  
603.887.0206  
603.887.0207  
603.887.0208  
603.887.0209  
603.887.0210  
603.887.0211  
603.887.0212  
603.887.0213  
603.887.0214  
603.887.0215  
603.887.0216  
603.887.0217  
603.887.0218  
603.887.0219  
603.887.0220  
603.887.0221  
603.887.0222  
603.887.0223  
603.887.0224  
603.887.0225  
603.887.0226  
603.887.0227  
603.887.0228  
603.887.0229  
603.887.0230  
603.887.0231  
603.887.0232  
603.887.0233  
603.887.0234  
603.887.0235  
603.887.0236  
603.887.0237  
603.887.0238  
603.887.0239  
603.887.0240  
603.887.0241  
603.887.0242  
603.887.0243  
603.887.0244  
603.887.0245  
603.887.0246  
603.887.0247  
603.887.0248  
603.887.0249  
603.887.0250  
603.887.0251  
603.887.0252  
603.887.0253  
603.887.0254  
603.887.0255  
603.887.0256  
603.887.0257  
603.887.0258  
603.887.0259  
603.887.0260  
603.887.0261  
603.887.0262  
603.887.0263  
603.887.0264  
603.887.0265  
603.887.0266  
603.887.0267  
603.887.0268  
603.887.0269  
603.887.0270  
603.887.0271  
603.887.0272  
603.887.0273  
603.887.0274  
603.887.0275  
603.887.0276  
603.887.0277  
603.887.0278  
603.887.0279  
603.887.0280  
603.887.0281  
603.887.0282  
603.887.0283  
603.887.0284  
603.887.0285  
603.887.0286  
603.887.0287  
603.887.0288  
603.887.0289  
603.887.0290  
603.887.0291  
603.887.0292  
603.887.0293  
603.887.0294  
603.887.0295  
603.887.0296  
603.887.0297  
603.887.0298  
603.887.0299  
603.887.0300  
603.887.0301  
603.887.0302  
603.887.0303  
603.887.0304  
603.887.0305  
603.887.0306  
603.887.0307  
603.887.0308  
603.887.0309  
603.887.0310  
603.887.0311  
603.887.0312  
603.887.0313  
603.887.0314  
603.887.0315  
603.887.0316  
603.887.0317  
603.887.0318  
603.887.0319  
603.887.0320  
603.887.0321  
603.887.0322  
603.887.0323  
603.887.0324  
603.887.0325  
603.887.0326  
603.887.0327  
603.887.0328  
603.887.0329  
603.887.0330  
603.887.0331  
603.887.0332  
603.887.0333  
603.887.0334  
603.887.0335  
603.887.0336  
603.887.0337  
603.887.0338  
603.887.0339  
603.887.0340  
603.887.0341  
603.887.0342  
603.887.0343  
603.887.0344  
603.887.0345  
603.887.0346  
603.887.0347  
603.887.0348  
603.887.0349  
603.887.0350  
603.887.0351  
603.887.0352  
603.887.0353  
603.887.0354  
603.887.0355  
603.887.0356  
603.887.0357  
603.887.0358  
603.887.0359  
603.887.0360  
603.887.0361  
603.887.0362  
603.887.0363  
603.887.0364  
603.887.0365  
603.887.0366  
603.887.0367  
603.887.0368  
603.887.0369  
603.887.0370  
603.887.0371  
603.887.0372  
603.887.0373  
603.887.0374  
603.887.0375  
603.887.0376  
603.887.0377  
603.887.0378  
603.887.0379  
603.887.0380  
603.887.0381  
603.887.0382  
603.887.0383  
603.887.0384  
603.887.0385  
603.887.0386  
603.887.0387  
603.887.0388  
603.887.0389  
603.887.0390  
603.887.0391  
603.887.0392  
603.887.0393  
603.887.0394  
603.887.0395  
603.887.0396  
603.887.0397  
603.887.0398  
603.887.0399  
603.887.0400  
603.887.0401  
603.887.0402  
603.887.0403  
603.887.0404  
603.887.0405  
603.887.0406  
603.887.0407  
603.887.0408  
603.887.0409  
603.887.0410  
603.887.0411  
603.887.0412  
603.887.0413  
603.887.0414  
603.887.0415  
603.887.0416  
603.887.0417  
603.887.0418  
603.887.0419  
603.887.0420  
603.887.0421  
603.887.0422  
603.887.0423  
603.887.0424  
603.887.0425  
603.887.0426  
603.887.0427  
603.887.0428  
603.887.0429  
603.887.0430  
603.887.0431  
603.887.0432  
603.887.0433  
603.887.0434  
603.887.0435  
603.887.0436  
603.887.0437  
603.887.0438  
603.887.0439  
603.887.0440  
603.887.0441  
603.887.0442  
603.887.0443  
603.887.0444  
603.887.0445  
603.887.0446  
603.887.0447  
603.887.0448  
603.887.0449  
603.887.0450  
603.887.0451  
603.887.0452  
603.887.0453  
603.887.0454  
603.887.0455  
603.887.0456  
603.887.0457  
603.887.0458  
603.887.0459  
603.887.0460  
603.887.0461  
603.887.0462  
603.887.0463  
603.887.0464  
603.887.0465  
603.887.0466  
603.887.0467  
603.887.0468  
603.887.0469  
603.887.0470  
603.887.0471  
603.887.0472  
603.887.0473  
603.887.0474  
603.887.0475  
603.887.0476  
603.887.0477  
603.887.0478  
603.887.0479  
603.887.0480  
603.887.0481  
603.887.0482  
603.887.0483  
603.887.0484  
603.887.0485  
603.887.0486  
603.887.0487  
603.887.0488  
603.887.0489  
603.887.0490  
603.887.0491  
603.887.0492  
603.887.0493  
603.887.0494  
603.887.0495  
603.887.0496  
603.887.0497  
603.887.0498  
603.887.0499  
603.887.0500  
603.887.0501  
603.887.0502  
603.887.0503  
603.887.0504  
603.887.0505  
603.887.0506  
603.887.0507  
603.887.0508  
603.887.0509  
603.887.0510  
603.887.0511  
603.887.0512  
603.887.0513  
603.887.0514  
603.887.0515  
603.887.0516  
603.887.0517  
603.887.0518  
603.887.0519  
603.887.0520  
603.887.0521  
603.887.0522  
603.887.0523  
603.887.0524  
603.887.0525  
603.887.0526  
603.887.0527  
603.887.0528  
603.887.0529  
603.887.0530  
603.887.0531  
603.887.0532  
603.887.0533  
603.887.0534



**NOTE:** - PERIMETER SEDIMENT CONTROL OPTIONS SHALL CONSIST OF SILT FENCE, FIBER LOSS, (BORICOLLS), WOOD MULCH BERM, OR TOPSOIL BERM TO BE UTILIZED AND INSTALLED FOR THE CONTRACTOR'S DISCRETION.



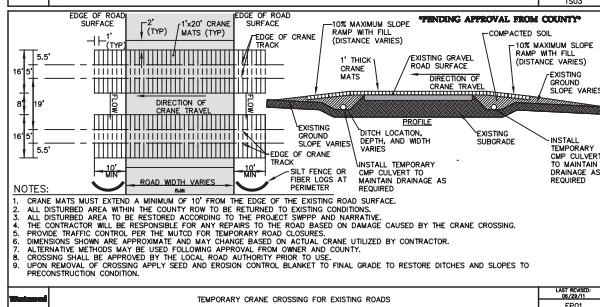
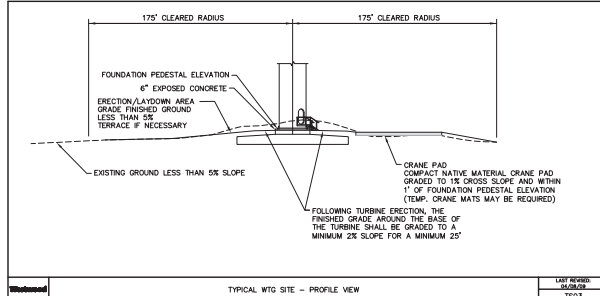
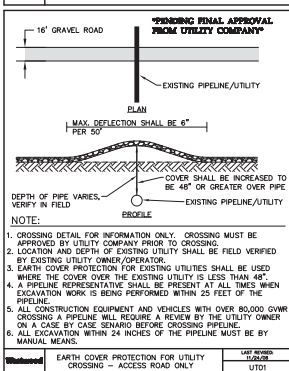
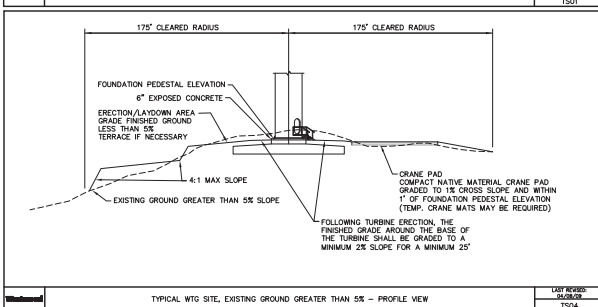
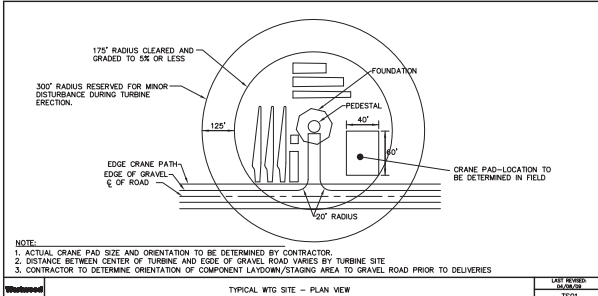
Project:	020
Client:	02
Drawn:	020
As-Built Drawing:	
Revised:	
1. Date:	08/01/17
2. Description:	02
3. Revision:	
4. Revision:	
5. Revision:	
6. Revision:	
7. Revision:	
8. Revision:	
9. Revision:	
10. Revision:	

## Northwest Ohio Wind Project

Paulding, Ohio

### Construction Details

**Issued For Construction**  
Army Updated: 08/18/2017  
Date: 10/18/2017  
Sheet: 5 OF 34



Drawn:	TS01
Checked:	TS01
Revised:	TS01
As-Built Drawing:	
Revised:	
1. Date:	09/01/17
2. Description:	10% plan
3. Date:	09/01/17
4. Description:	10% plan
5. Date:	09/01/17
6. Description:	10% plan
7. Date:	09/01/17
8. Description:	10% plan
9. Date:	09/01/17
10. Description:	10% plan



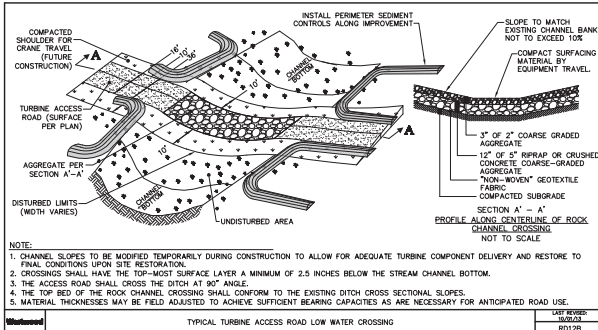
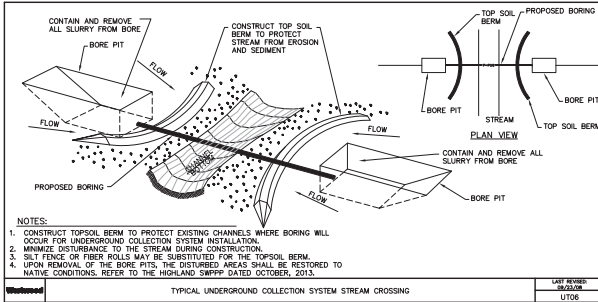
White Wind Ohio, LLC  
c/o Barnard Energy Group, LLC  
5 Glenview Office Park, 2nd Floor  
Cincinnati, OH 45202

## Northwest Ohio Wind Project Paulding, Ohio

### Construction Details

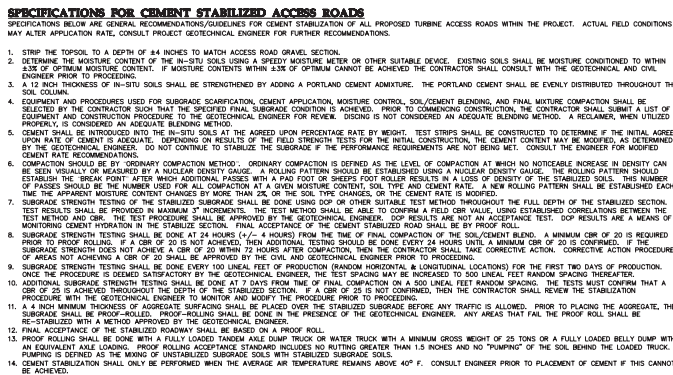
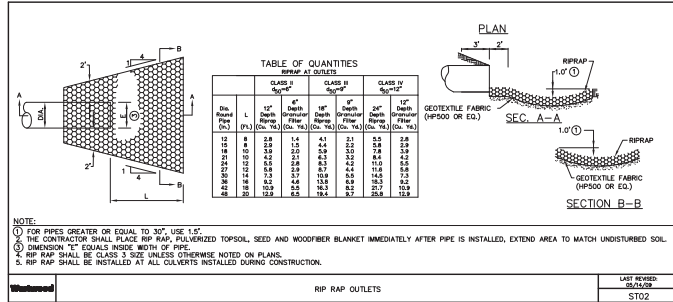
#### Issued For Construction

Army Updated: 09/18/2017  
Date: 10/18/2017  
Sheet: 6 OF 34



TURB. NUM	NORTHING	EASTING	TURB. NUM	NORTHING	EASTING
T-01	518779.99	1371313.70	T-26	509646.09	1339482.38
T-02	514636.90	1373513.70	T-28	506162.17	1339529.86
T-03	512788.06	1373833.48	T-31	511151.51	1401872.89
T-04	511147.56	1374516.73	T-32	507858.68	1398595.32
T-05	509179.48	1374818.93	T-33	506780.21	1399346.33
T-06	508918.10	1375932.21	T-34	505852.96	1400740.25
T-07	507702.14	1380202.15	T-36	506715.06	1402038.29
T-08	506885.88	1376190.57	T-37	505617.10	1404836.34
T-09	503908.07	1377589.54	T-39	502832.93	1405543.41
T-10	503006.39	1379553.18	T-40	501814.28	1406507.33
T-11	512438.29	1382804.20	T-41	511133.24	1410018.00
T-14	511990.53	1384253.76	T-42	512346.88	1411135.45
T-15	508508.89	1382840.40	T-43	511289.04	1412005.43
T-16	506040.37	1382593.48	T-44	508839.49	1410911.21
T-17	504627.52	1385099.80	T-45	506100.19	1410018.49
T-20	511132.16	1389423.77	T-46	502646.83	1408950.18
T-21	508189.95	1389363.01	T-48	518085.39	1411527.31
T-22	506851.45	1389828.80	T-49	517441.03	1414861.36
T-23	505843.11	1390681.84	T-50	516834.32	1416508.03
T-24	503031.96	1387571.50	ALT-35	510090.21	1404428.78
T-25	501657.09	1388454.13	ALT-51	515877.37	1417574.09

**WIND TURBINE GENERATOR COORDINATES** **DATE**  
08/15/2017



<b>Project:</b>	SSD
<b>Client:</b>	WB
<b>Drawn:</b>	SSD
<b>As-Built Drawing:</b>	
<b>Revised:</b>	
<b>A</b>	08/01/17
<b>B</b>	08/07/17
<b>C</b>	08/11/17
<b>D</b>	08/22/17
<b>E</b>	01/18/17

Issued for Construction

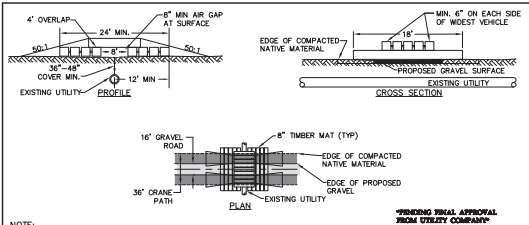


**White Wind Ohio, LLC**  
c/o Barnwell Energy Group, LLC  
8 Greenwich Office Park, 2nd Floor  
Columbus, OH 43260

**Northwest Ohio Wind Project**  
Paulding, Ohio

Construction Details

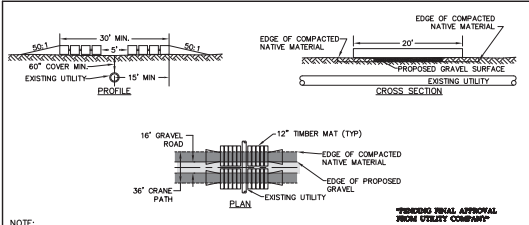
**Issued For Construction**  
Army Updated: 08/18/2017  
Date: 10/18/2017  
Sheet: 7 OF 34



NOTE:

- CROSSING DETAIL FOR INFORMATION ONLY. CROSSING MUST BE APPROVED BY UTILITY COMPANY PRIOR TO CROSSING.
- DEPTH AND LENGTH OF FILL VARIES PER PIPELINE/UTILITY COMPANIES' RECOMMENDATION.
- CRANE MAT PROTECTION FOR UTILITY CROSSING SHALL BE USED WHERE THE COVER OVER THE EXISTING UTILITY IS 36" OR GREATER.
- A UTILITY COMPANY REPRESENTATIVE SHALL BE PRESENT AT ALL TIMES WHEN EXCAVATION WORK IS BEING PERFORMED WITHIN 25 FEET OF THE PIPELINE.
- ALL CONSTRUCTION EQUIPMENT AND VEHICLES OVER 80,000 LBSR CROSSING A PIPELINE WILL REQUIRE A REVIEW BY THE UTILITY OWNER ON A CASE BY CASE SCENARIO BEFORE CROSSING PIPELINE.
- ALL EXCAVATION WITHIN 24 INCHES OF THE PIPELINE MUST BE BY MANUAL MEANS.

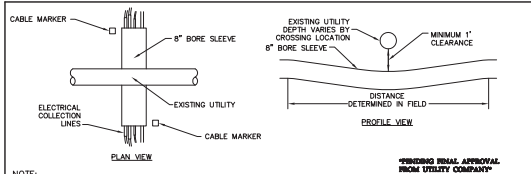
Westwood	CRANE MAT PROTECTION FOR UTILITY CROSSING (DOMINION)	LAST REVISION 08/01/2017
		UT02-1a



NOTE:

- CROSSING DETAIL FOR INFORMATION ONLY. CROSSING MUST BE APPROVED BY UTILITY COMPANY PRIOR TO CROSSING.
- DEPTH AND LENGTH OF FILL VARIES PER PIPELINE/UTILITY COMPANIES' RECOMMENDATION.
- CRANE MAT PROTECTION FOR UTILITY CROSSING SHALL BE USED WHERE THE COVER OVER THE EXISTING UTILITY IS 36" OR GREATER.
- NO GROUND DISTURBANCE SHALL BE MADE WITHIN TRANSCANADA RIGHT OF WAY OR WITHIN 25 FEET, MEASURED AT RIGHT ANGLES, EXCEPT IN THE PRESENCE OF TRANSCANADA REPRESENTATIVE. TRANSCANADA WILL ARRANGE FOR A REPRESENTATIVE TO BE ON SITE WHEN WORK IS OCCURRING ON OR NEAR RIGHT OF WAY OR WITHIN 25 FEET OF PIPELINES. AFTER HOURS CALL 800-447-8066.
- NOTICE OF AT LEAST 72 HOURS IN ADVANCE OF CONSTRUCTION MUST BE PROVIDED. NORTHWEST OHIO WIND PROJECT MUST CONTACT TRANSCANADA REPRESENTATIVE TODD FLURY 419-438-0208.

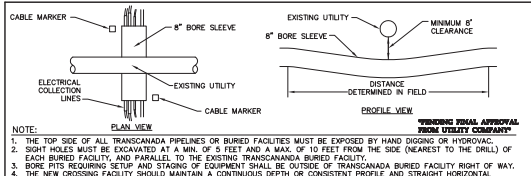
Westwood	CRANE MAT PROTECTION FOR UTILITY CROSSING (TRANSCANADA)	LAST REVISION 08/01/2017
		UT02-1b



NOTE:

- ALL BORING MUST MAINTAIN A MIN. OF 1 FOOT CLEARANCE AND POTHOLED.

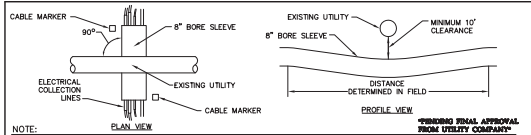
Westwood	ELECTRICAL COLLECTION/PIPELINE CROSSING (DOMINION)	LAST REVISION 08/01/2017
		UT04a



NOTE:

- THE TOP SIDE OF ALL TRANSCANADA PIPELINES OR BURIED FACILITIES MUST BE EXPOSED BY HAND DIGGING OR HYDROVAC.
- SOFT HOLES MUST BE EXCAVATED AT A MIN. OF 5 FEET AND A MAX. OF 10 FEET FROM THE SIDE (NEAREST TO THE DRILL) OF EACH BURIED FACILITY, AND PARALLEL TO THE EXISTING TRANSCANADA BURIED FACILITY.
- BORING PITS REQUIRING SETUP AND STAGING OF EQUIPMENT SHALL BE OUTSIDE OF TRANSCANADA BURIED FACILITY RIGHT OF WAY.
- THE NEW CROSSING FACILITY SHOULD MAINTAIN A CONTINUOUS DEPTH OR CONSISTENT PROFILE AND STRAIGHT HORIZONTAL ALIGNMENT ACROSS THE FULL LENGTH OF THE RIGHT OF WAY.
- CROSSING MUST PASS TRANSCANADA FACILITY WITH A MIN. CLEARANCE OF 8 FEET.
- CABLE CROSSING SHOULD BE CLEARLY AND PERMANENTLY MARKED ON EACH SIDE OF THE RIGHT OF WAY.
- NO GROUND DISTURBANCE SHALL BE MADE WITHIN TRANSCANADA RIGHT OF WAY OR WITHIN 25 FEET, MEASURED AT RIGHT ANGLES, EXCEPT IN THE PRESENCE OF TRANSCANADA REPRESENTATIVE. TRANSCANADA WILL ARRANGE FOR A REPRESENTATIVE TO BE ON SITE WHEN WORK IS OCCURRING ON OR NEAR RIGHT OF WAY OR WITHIN 25 FEET OF PIPELINES. AFTER HOURS CALL 800-447-8066.
- NOTICE OF AT LEAST 72 HOURS IN ADVANCE OF CONSTRUCTION MUST BE PROVIDED. NORTHWEST OHIO WIND PROJECT MUST CONTACT TRANSCANADA REPRESENTATIVE TODD FLURY 419-438-0208.

Westwood	ELECTRICAL COLLECTION/PIPELINE CROSSING (TRANSCANADA)	LAST REVISION 08/01/2017
		UT04b



NOTE:

- UNDERGROUND LINE CROSSINGS MUST CROSS AT OR NEAR 90° TO THE PIPELINE.
- A MINIMUM OF 10' CLEARANCE SHALL BE MAINTAINED FOR THE WIDTH OF THE PIPELINE RIGHT OF WAY.
- POTHOLES SHALL BE EXCAVATED ON THE APPROACH SIDE OF THE BORE. THE DEPTH OF THE POTHOLE SHALL BE TO A MINIMUM OF 2' BELOW THE BOTTOM OF THE PIPELINE AND IN THE DIRECT PATH OF THE APPROACHING BORE TOOL TO ALLOW VISUAL CONFIRMATION THAT THE BORE TOOL DOES NOT IMPACT THE PIPELINE.
- POWER LINE CROSSINGS MUST BE CLEARLY MARKED AND IDENTIFIED ON EACH SIDE OF THE PIPELINE EASEMENT.

Westwood	ELECTRICAL COLLECTION/PIPELINE CROSSING (PANHANDLE)	LAST REVISION 08/01/2017
		UT04c



Drawn:	SSD
Checked:	SSD
Issued:	SSD
As-Built Drawing:	
Revised:	
1. Date:	08/01/2017
2. Description:	CRANE MAT PROTECTION FOR UTILITY CROSSING (DOMINION)
3. Revision:	
A. 08/01/17	CRANE MAT PROTECTION FOR UTILITY CROSSING (DOMINION)
B. 08/01/17	CRANE MAT PROTECTION FOR UTILITY CROSSING (DOMINION)
C. 08/01/17	CRANE MAT PROTECTION FOR UTILITY CROSSING (DOMINION)
D. 08/01/17	CRANE MAT PROTECTION FOR UTILITY CROSSING (DOMINION)
E. 10/18/17	Issued for Construction



Northwest Ohio Wind  
c/o Barnwell Energy Group, LLC  
9 Glenview Office Park, 2nd Floor  
Channahon, IL 61018

## Northwest Ohio Wind Project

Paulding, Ohio

### Construction Details

Issued For Construction  
Army Updated: 08/18/2017  
Date: 10/18/2017  
Sheet: 8 OF 34



ROAD DESIGN PARAMETERS

- ACCESS ROADS HAVE BEEN DESIGNED TO ACCOMMODATE LIGHT DUTY TRUCKS FOR LOW VOLUME USE IN NORMAL OPERATING CONDITIONS. THE ROAD DESIGN IS NOT INTENDED FOR ALL WEATHER USE FOR HEAVY DUTY, HIGH VOLUME, CONSTRUCTION LOADS.
- ROAD MAINTENANCE CAN BE EXPECTED OVER THE LIFE OF THE PERMANENT FACILITY AND MAY INCLUDE BLADING AND REPLACEMENT OF AGGREGATE MATERIAL.
- PLANS ARE INTENDED FOR PRIVATE ACCESS ROAD DESIGN AND NOT INTENDED FOR PUBLIC ROAD IMPROVEMENTS.
- CONTRACTOR SHALL CONFIRM ROAD SECTIONS REQUIRED FOR TURBINE COMPONENT DELIVERY WITH THE FINAL GEOTECHNICAL REPORT.

DISCUSSION

- CLEARING AND GRUBBING
  - THE CONTRACTOR SHALL BE REQUIRED TO GRUB/MULCH ALL TREES, STUMPS, BRUSH, AND DEBRIS WITHIN THE GRADING AREAS SHOWN ON THE PLANS. THE CONTRACTOR IS TO REMOVE ONLY THOSE TREES WHICH ARE DESIGNATED BY THE OWNER'S REPRESENTATIVE FOR REMOVAL, AND SHALL EXERCISE EXTREME CARE AROUND EXISTING TREES TO BE SAVED.
- TOPSOIL STRIPPING
  - TOPSOIL SHALL BE STRIPPED FROM ALL ROADWAY AREAS THROUGH THE ROOT ZONE (TYPICAL 4' TO 12"). TOPSOIL SHALL NOT BE STRIPPED OUTSIDE OF THE DESIGNATED DISTURBANCE AREAS.
  - ANY TOPSOIL THAT HAS BEEN STRIPPED, SHALL BE RE-SPREAD OR STOCKPILED WITHIN GRADING AREAS AND/OR USED AS FILL OUTSIDE OF THE DISTURBANCE AREAS, AS DIRECTED BY THE ENGINEER. ALL TOPSOIL SHALL BE REDISTRIBUTED TO THE LAND OWNER'S PROPERTY OF WHERE IT ORIGINATED FROM.
- EMBANKMENT CONSTRUCTION
  - EMBANKMENT CONSTRUCTION SHALL CONSIST OF THE PLACING OF SUITABLE FILL MATERIAL, AFTER TOPSOIL STRIPPING, ABOVE THE EXISTING GRADE. GENERALLY, EMBANKMENTS SHALL HAVE COMPACTED SUPPORT SLOPES OF FOUR FOOT HORIZONTAL TO ONE FOOT VERTICAL, WITH SOME LOCATIONS THROUGHOUT THE PROJECT WITH SLOPES OF TWO FEET HORIZONTAL TO ONE FOOT VERTICAL. THE MATERIAL FOR EMBANKMENT CONSTRUCTION SHALL BE OBTAINED FROM THE ACCESS ROAD/TURBINE EXCAVATION (SEE GEOTECHNICAL REPORT FOR RESTRICTIONS), OR ANY SUITABLE APPROVED SOIL OBTAINED GINSEY/FSYTE BY CONTRACTOR, AS DIRECTED OR APPROVED BY THE ENGINEER. THIS MATERIAL SHALL BE PLACED IN LIFTS NOT TO EXCEED 8".
  - SIDE SLOPES GREATER THAN 3:1 WILL NOT BE PERMITTED, UNLESS OTHERWISE NOTED ON THE PLAN.

STORM WATER DESIGN PARAMETERS

- CULVERTS WITHIN THE COUNTY RIGHT OF WAY WERE NOT SIZED BASED ON SPECIFIC STORM INTERVALS. EXISTING DITCHES PROVED TO BE TOO SMALL IN MANY INSTANCES TO PRACTICALLY ALLOW INSTALLATION OF LARGER CULVERTS. IT IS EXPECTED THAT CULVERTS WILL BE OVERTOPPED DURING SOME STORMS AND MAINTENANCE WILL BE REQUIRED THROUGHOUT THE LIFE OF THE PROJECT. INSTALLED CULVERTS SHALL BE SIZED TO MATCH THE DOWNSTREAM CULVERT SIZE (E.G. IF THE DOWNSTREAM CULVERT IS A 24" THE INSTALLED CULVERT SHALL BE A 24", UNLESS IN CIRCUMSTANCES WHERE THERE MAY BE CONSTRUCTIBILITY CONCERNS) OR SIZED BASED ON COUNTY REQUEST. IN INSTANCES WHERE EXISTING DOWNSTREAM CULVERT SIZES COULD NOT BE DETERMINED, PROPOSED PERMANENT CULVERTS WERE DESIGNED TO ACCOMMODATE BETWEEN THE 1-YEAR AND 2-YEAR, 24-HOUR STORM EVENT. ALL CULVERTS SHALL BE INSTALLED PER OHIO DEPARTMENT OF TRANSPORTATION AND/OR PAULding COUNTY STANDARD SPECIFICATIONS AND SHALL BE MANUFACTURED OF CORRUGATED METAL PIPE OR HIGH DENSITY POLYETHYLENE PIPE AS NOTED. ALL CULVERTS SHALL BE PLACED AT A MINIMUM 0.5% GRADE. ALL TEMPORARY PORTIONS OF THE INSTALLED CULVERTS SHALL BE REMOVED UPON COMPLETION OF THE PROJECT.
- LOW WATER CROSSINGS HAVE BEEN DESIGNED TO ALLOW NATURAL DRAINAGE TO OCCUR POST CONSTRUCTION OF THE ACCESS ROADS. IT IS ANTICIPATED THAT DURING "HEAVY" RAIN STORM EVENTS AND DURING THE FREEZE/THAW CYCLE, SOME ACCESS ROADS WILL BE IMPASSABLE DUE TO THE SEASONAL ENVIRONMENTAL CONDITIONS. MAINTENANCE OF THE ACCESS ROADS MAY BE REQUIRED DUE TO THE NATURAL DRAINAGE. WHEN INSTALLING DRAINAGE CULVERTS, THE CONTRACTOR SHALL SET THE FLOW LINE ELEVATIONS AND CULVERT LONGITUDINAL SLOPE WITH THE EXISTING GRADE OF THE DITCH. FURTHER, A MINIMUM COVER OF 12" SHALL BE PROVIDED OVER ALL CULVERTS.
- ALL PERMANENT PIPE CULVERTS SHALL BE INSTALLED PER OHIO DEPARTMENT OF TRANSPORTATION AND/OR PAULding COUNTY STANDARD SPECIFICATIONS AND SHALL BE MANUFACTURED OF CORRUGATED METAL PIPE OR HIGH DENSITY POLYETHYLENE PIPE AS NOTED.
- ANTICIPATED CULVERTS HAVE BEEN SHOWN ON THE CONSTRUCTION PLAN. ADDITIONAL CULVERTS MAY NEED TO BE INSTALLED IN AREAS WHERE CONCENTRATED FLOW IS EXPECTED DUE TO CONSTRUCTION ACTIVITIES.
- ALL TEMPORARY CRANE CROSSING FACILITIES HAVE BEEN DESIGNED TO ACCOMMODATE THE 1-YEAR 24 HOUR STORM EVENT OR MATCHING DOWNSTREAM CULVERT SIZES. IT IS ANTICIPATED THAT DURING LARGER RAINFALL EVENTS THE STORMWATER WILL OVERTOP THE CONSTRUCTED CRANE CROSSING.

STORMWATER POLLUTION PREVENTION PLAN SUMMARY

- THE CONTRACTOR SHALL PROVIDE EROSION CONTROL MEASURES AS PLANNED AND SPECIFIED FOLLOWING BEST MANAGEMENT PRACTICES AS OUTLINED BY THE OHIO ENVIRONMENTAL PROTECTION AGENCY (OEPA) AND BEING IN CONFORMANCE WITH THE NATIONAL POLLUTION DISCHARGE ELIMINATION SYSTEM (NPDES) GENERAL STORMWATER PERMIT.
- REFER TO THE STORMWATER POLLUTION PREVENTION PLAN (SWPPP) FOR THE NORTHWEST OHIO WIND PROJECT, PREPARED BY WESTWOOD PROFESSIONAL SERVICES, FOR EROSION CONTROL AND RESTORATION SPECIFICATIONS, SEDIMENT AND EROSION CONTROL PROCEDURES, LOCATIONS OF BMPs, DETAILS, AND INSPECTION INFORMATION.
- ALL PASTURES AND DRAINAGE SWALES DISTURBED DURING CONSTRUCTION ACTIVITIES AND NOT COVERED BY ROAD SURFACING MATERIALS, SHALL BE SEEDED IN ACCORDANCE WITH THE SWPP PLAN.

TABLE 1: OHIO DOT 703.17 SPEC AGGREGATE GRADATION		
SEIVE SIZE	PERCENT PASSING	
2"	(100)	
1"	(75-100)	
3/4"	(50-60)	
No. 4	(30-60)	
No. 30	(9-33)	
No. 200	(0-15)	
LOS ANGELES TEST = MAX 50% WEAR		
FRACTURED PIECES = MIN 90% BY WEIGHT		

TESTING

- TESTING SHALL BE PERFORMED BY A DESIGNATED INDEPENDENT TESTING AGENCY.
- SUBMIT ONE SET OF TESTING AND INSPECTION RECORDS SPECIFIED TO THE CIVIL ENGINEER OF RECORD.

DEFINITIONS:

- PROOF ROLLING:
  - SHALL BE PERFORMED IN THE PRESENCE OF THE GEOTECHNICAL ENGINEER OR QUALIFIED GEOTECHNICAL REPRESENTATIVE USING A FULLY LOADED TANDEN AXLE DUMP TRUCK OR WATER TRUCK WITH A MINIMUM GROSS WEIGHT OF 25 TONS OR A FULLY LOADED BELLY DUMP WITH AN EQUIVALENT AXLE LOADING. PROOF-ROLLING ACCEPTANCE STANDARDS INCLUDE NO RUTTING GREATER THAN 1.5 INCHES, AND NO "PUMPING" OF THE SOIL BEHIND THE LOADED TRUCK.
- SEVE ANALYSIS:
  - SHALL BE CONDUCTED IN ACCORDANCE WITH AASHTO T29
- PROCTORS:
  - SHALL BE DETERMINED IN ACCORDANCE WITH AASHTO 137
- ATTEMBERG LIMITS:
  - SHALL BE DETERMINED IN ACCORDANCE WITH AASHTO T89 AND T90
- MOISTURE DENSITY (NUCLEAR DENSITY):
  - SHALL BE DONE IN ACCORDANCE WITH AASHTO T310
- DYNAMIC CONE PENETROMETER (DCP) TESTING:
  - SHALL BE DONE IN ACCORDANCE WITH ASTM D6951-03

SUBGRADE COMPACTION, TEST ROLLING AND AGGREGATE BASE COMPACTION:

- FILL MATERIAL:
  - SOLS USED AS FILL MATERIAL SHALL BE TESTED FOR GRAIN SIZE ANALYSIS, MOISTURE CONTENT, ATTEMBERG LIMITS ON FINES CONTENT, AND PROCTOR TESTS (STANDARD DRY MAXIMUM DENSITY).
  - FOR PLACED & COMPACTED FILLS, PROVIDE ONE COMPACTION TEST PER LIFT FOR EVERY 1000 FT OF ROAD LENGTH. INCLUDE THE LOCATION, DRY DENSITY, MOISTURE CONTENT, AND COMPACTION PERCENT BASED ON STANDARD PROCTOR MAXIMUM DRY DENSITY.
  - IN ROADWAY CUT AREAS, OR WHERE EMBANKMENT CONSTRUCTION REQUIRES LESS THAN 12 INCHES OF FILL PLACEMENT, COMPACT TO A MINIMUM OF 95 PERCENT OF THE MATERIAL'S STANDARD PROCTOR MAXIMUM DRY DENSITY.
  - IF STRUCTURAL FILL IS REQUIRED, GEOTECHNICAL ENGINEER SHALL BE CONSULTED BY GENERAL CONTRACTOR FOR DETERMINATION OF STABILITY.
- COMPACTED SUBGRADE (CEMENT STABILIZED):
  - ALL SUBGRADE SHALL BE CEMENT STABILIZED. REFER TO CEMENT STABILIZATION SPECIFICATIONS ON SHEET 7 FOR CONSTRUCTION METHODS AND TESTING SCHEDULE.
  - COMPACTED SUBGRADE (NON-CEMENT STABILIZED):
    - PROVIDE 3 MOISTURE DENSITY COMPACTION TEST PER ACCESS ROAD, OR ONE FOR EVERY 1000 L.F. OF ROAD LENGTH, WHICHEVER IS GREATER. COMPACTED SUBGRADE MUST BE COMPACTED TO A MINIMUM OF 95% STANDARD PROCTOR MAXIMUM DRY DENSITY AT 0.5% OF OPTIMUM MOISTURE CONTENT FOR GRANULAR SOLS AND AT -2 TO +3% OF OPTIMUM MOISTURE CONTENT FOR COHESIVE SOLS.
    - TEMPORARY RAILS IMPROVEMENTS SHALL BE LIMITED TO PROOF ROLLING ON THE AGGREGATE SURFACE. PROOF ROLLING SHALL BE COMPLETED IN THE PRESENCE OF A GEOTECHNICAL ENGINEER OR A QUALIFIED GEOTECHNICAL REPRESENTATIVE USING A FULLY LOADED WATER TRUCK WITH AN EQUIVALENT AXLE LOADING. ACCEPTANCE STANDARDS SHALL BE NO RUTTING GREATER THAN 3 INCHES AND NO "PUMPING" OF SOLS BEHIND THE LOADED TRUCK. IF PROOF ROLLING DETERMINES THAT THE ROAD IS UNSTABLE, ADDITIONAL AGGREGATE SHALL BE ADDED UNTIL THE UNSTABLE SECTION IS ABLE TO PASS A PROOF ROLL.
  - AGGREGATE BASE:
    - AGGREGATE BASE SHALL BE PROOF-ROLLED OVER THE ENTIRE LENGTH. IF PROOF ROLLING DETERMINES THAT THE ROAD IS UNSTABLE, ADDITIONAL AGGREGATE SHALL BE ADDED UNTIL THE UNSTABLE SECTION IS ABLE TO PASS A PROOF ROLL.
    - PROVIDE 1 DCP TEST FOR EVERY 1,000 L.F. OF ROAD LENGTH. ROAD BASE SHALL BE COMPACTED TO ACHIEVE A PENETRATION INDEX VALUE LESS THAN OR EQUAL TO 10 MM/BLOW.
  - PROVIDE 1 SEVE ANALYSIS (PROJECT MAX OF 20) PER 2500 CY OF ROAD BASE PLACED.
- CRANE TRAVEL SHOULDERS:
  - CRANE TRAVEL SHOULDERS SHALL BE THE RESPONSIBILITY OF THE CONTRACTOR. ALL CRANE SHOULDERS COMPACTION PROCEDURES AND TESTING PROCEDURES SHALL BE THE CONTRACTOR'S MEANS AND METHODS
- CRANE PADS:
  - SCARIFY AND COMPACT EXISTING SOLS TO A DEPTH OF 12-INCHES.
  - ALL CRANE PADS MUST BE PROOF ROLLED PRIOR TO UTILIZATION.
  - IF THE CRANE PAD CANNOT ACHIEVE PROOF-ROLL ACCEPTANCE AS DETERMINED BY THE GEOTECHNICAL ENGINEER, DCP TEST MAY BE USED. WHEN UTILIZED, DCP TESTING SHALL BE USED AT MINIMUM RATE OF 2 PER CRANE PAD AND ACHIEVE A MAXIMUM OF 24 MM/BLOW.
- AT THE CONTRACTOR'S DISCRETION, CRANE MATS MAY BE UTILIZED TO PROVIDE ADDITIONAL STABILITY.
- CRANE PAD CONSTRUCTION SHALL BE THE RESPONSIBILITY OF THE CONTRACTOR. THE TESTING PROCEDURES IN SECTIONS A, B, C AND D ABOVE ARE RECOMMENDATIONS BASED ON WESTWOOD'S PAST EXPERIENCE ON SIMILAR WIND PROJECTS. ALL FINAL CRANE PAD CONSTRUCTION AND TESTING PROCEDURES SHALL BE THE CONTRACTOR'S MEANS AND METHODS.
- EXISTING TURBINE ACCESS ROADS:
  - TURBINE ACCESS ROADS SHALL BE CLEARED OF ALL VEGETATION AND BLADES TO REMOVE RUTTING, WASHBOARDS AND TO CREATE A SMOOTH, UNIFORM GENTLY AGGREGATE SURFACE.
  - TURBINE ACCESS ROADS SHALL BE PROOF ROLLED PRIOR TO UTILIZATION.
  - AFTER PASSING PROOF ROLL, A 2" AGGREGATE CAP SHALL BE PLACED ALONG THE ENTIRE LENGTH OF THE ACCESS ROAD AND COMPACTED WITH A SMOOTH DRUM ROLLER.
  - ADDITIONAL MAINTENANCE MAY BE REQUIRED ON PREVIOUSLY CONSTRUCTED ROADS TO KEEP THEM IN SAFE OPERATING CONDITIONS DURING CONSTRUCTION.

PRODUCTS

- ROAD BASE SHALL CONSIST OF OHIO DOT 703.17 SPECIFICATION AGGREGATE GRADATION, MEETING THE GRADATION PROVIDED IN TABLE 1.
- ROAD SUBGRADE AND SHOULDERS SHALL CONSIST OF COMPACTED NATIVE SOLS.
- GEOTEXTILE FABRIC FOR ROAD BASE MATERIAL SEPARATION SHALL BE MEAT HP270 OR APPROVED EQUAL.
- CULVERTS SEE PLAN FOR CULVERT LOCATIONS. CULVERTS SHALL MEET THE MINIMUM SPECIFICATIONS SET FORTH BY THE OHIO DEPARTMENT OF TRANSPORTATION AND/OR PAULding COUNTY. ALL CULVERTS SHALL BE MANUFACTURED OF 16-GAUGE CORRUGATED METAL PIPE UNLESS NOTED OTHERWISE.

PROJECT CONTACT INFORMATION:

TITLE	COMPANY	NAME	CONTACT NUMBER
OWNER	TRISHE WIND OHIO, LLC	ALEX DABERGO	203-422-8104
PROJECT MANAGER	WESTWOOD	STEVE BATTAGLIA	952-906-7405
ENGINEER OF RECORD	WESTWOOD	DANIEL BECKMANN	952-906-7424
CONTRACTOR	WHITE CONSTRUCTION	ALAN DOWNES	608-320-2818
PAULding COUNTY ENGINEER	PAULding COUNTY	TRAVIS MCGARVEY	419-399-2366
OHIO EPA			800-329-7518

GENERAL NOTES:

- THE PLANNIMETRIC FEATURES SHOWN ON THE PLANS ARE PROVIDED BY WESTWOOD PROFESSIONAL SERVICES SUPPLEMENTED WITH PUBLICLY AVAILABLE DATA. GROUND SURFACE CONTOURS AND ELEVATIONS HAVE BEEN PROJECTED FROM A 3-METER ACOURACY PUBLIC LOAD DATASET PROVIDED BY THE STATE OF OHIO. THE DATASET WAS PLANNED IN 2006 UNDER THE OHIO STATEWIDE MASTERY PROGRAM (OSMP).
- WHERE SECTOR OR SUBSECTION MONUMENTS ARE ENCOUNTERED, THE OWNER SHALL BE NOTIFIED BEFORE SUCH MONUMENTS ARE REMOVED. THE CONTRACTOR SHALL PROTECT AND CAREFULLY PRESERVE ALL PROPERTY MARKERS AND MONUMENTS UNTIL THE OWNER, AN AUTHORIZED SURVEYOR OR AGENT HAS WITNESSED OR OTHERWISE REFERENCED THEIR LOCATION. THE CONTRACTOR IS RESPONSIBLE FOR REPLACING DAMAGED PROPERTY MARKERS AND MONUMENTS.
- EFFORTS SHALL BE MADE TO MINIMIZE SOIL DISTURBANCE TO AREAS OUTSIDE OF THE ROAD GRADING LIMITS, CRANE PATHS, AND TURBINE SITES. TYPICAL DISTURBANCE SHALL BE LIMITED TO 10 LF FROM THE EDGE OF PROPOSED GRADING.
- FINALIZE GRADING AROUND THE BASE OF TURBINES IN ACCORDANCE WITH DETAIL T5-C3 AND T5-C4.
- GRADE ALL PROPOSED ROADS TO A MAXIMUM SLOPE OF 8%. IF 10% SLOPE CANNOT BE ACHIEVED, THE CONTRACTOR MAY UTILIZE ASSIST VEHICLES FOR THE PURPOSE OF DELIVERIES. GRADE ALL PROPOSED CRANE PATHS TO A MAXIMUM OF 10% UNLESS OTHERWISE NOTED IN PLAN SHEETS.
- IF LOCALIZED LOW POINTS ARE ENCOUNTERED DURING TOPSOIL STRIPPING, MASSAGE SURROUNDING AREA TO MAINTAIN POSITIVE DIRECTION OF DRAINAGE TO MINIMIZE PONDING OF STORMWATER DURING RAINFALL EVENTS.
- ANY FACILITIES REMOVED TO ALLOW FOR CONSTRUCTION (MAILBOXES, SIGNS, FENCES, ETC) SHALL BE REPLACED BY THE CONTRACTOR IN A CONDITION AS GOOD AS EXISTING.
- THE CONTRACTOR IS RESPONSIBLE FOR MAINTAINING DRAINAGE THROUGHOUT THE CONSTRUCTION OF THIS PROJECT. CONSTRUCTION ACTIVITIES SHALL NOT BLOCK THE NATURAL OR MANMADE CREEKS OR DRAINAGE SWALES CAUSING RAINWATER TO POND. DEPENDENT ON FIELD CONDITIONS, ADDITIONAL CULVERTS IN EXCESS OF THOSE ON THE PLANS MAY BE REQUIRED.
- WHILE BUILDING THE ROADS AND EXCAVATING THE TURBINE FOUNDATIONS, EXCESS SOIL WILL RESULT. THE CONTRACTOR SHALL DISPOSE OF THIS EXCESS SOIL IN AN APPROVED MANNER. EXCESS TOPSOIL SHALL BE DISTRIBUTED INTO A THIN LAYER ON LAND IMMEDIATELY ADJACENT TO WHERE THE TOPSOIL ORIGINATED. WHILE DOING SO THE CONTRACTOR SHALL AVOID CAUSING ROADES OR MOUNDS THAT WOULD MAKE IT DIFFICULT FOR STORM WATER RUNOFF TO DRAIN. THE FINAL SURFACE OF THE DISTURBED TOPSOIL SHALL BE SMOOTH AND FOLLOW THE NATURAL CONTOUR OF THE LAND.
- THE CONTRACTOR SHALL NOTIFY OHIO DOT AT LEAST 48 HOURS BEFORE EXCAVATION ACTIVITIES COMMENCE.
- TEMPORARY INTERSECTION WARNING SHALL, UPON COMPLETION OF ALL PROJECT CONSTRUCTION OR UPON NOTIFICATION OF THE ENGINEER, BE REMOVED AND THE AREA RESTORED TO ITS ORIGINAL LINES AND GRADINGS WITH THE UPPER FOOT OF THE RESTORED GROUND BEING TOPSOIL. EXCESS WERE REQUESTED BY THE TOWNSHIP OR COUNTY TO PERMANENTLY REMAIN. DISTURBED AREAS OUTSIDE OF THE TOWNSHIP OR COUNTY SHALL BE SEEDED AND MULCHED.
- TURBINE SETBACKS ARE NOT IDENTIFIED ON THE CONSTRUCTION PLANS. IT SHALL BE THE RESPONSIBILITY OF THE OWNER AND CONTRACTOR TO ENSURE THAT ALL TURBINE SETBACKS MEET PROJECT REQUIREMENTS.
- GEOTECHNICAL REPORTS WITH RECOMMENDATIONS HAVE BEEN PREPARED BY BARR ENGINEERING, INC. ALL GRADING SHALL CONFORM TO THE GEOTECHNICAL ENGINEERING REPORT AND RECOMMENDATIONS.
- WETLAND INFORMATION SHOWN ON THE PLAN WAS PROVIDED BY METECRO PROFESSIONAL SERVICES. ALL CULTURAL RESOURCE REPORTS HAVE BEEN PROVIDED BY WESTWOOD PROFESSIONAL SERVICES. THE LOCATIONS OF CULTURAL RESOURCE SITES MAY BE CONFIDENTIAL AND PROTECTED BY STATE OR FEDERAL LAW. PUBLIC RELEASE OF SPECIFIC INFORMATION REGARDING THESE RESOURCES MAY BE RESTRICTED.
- ELECTRICAL INFORMATION SHOWN ON THE PLANS IS FOR REFERENCE ONLY. REFER TO ELECTRICAL CONSULTANTS' PLANS FOR SPECIFIC LOCATIONS AND CONSTRUCTION DETAILS FOR THE UNDERGROUND POWER COLLECTION SYSTEM AND SUBSTATION.
- CRANE PATHS ARE SHOWN ON THE CONSTRUCTION PLANS. FINAL CRANE PATH ALIGNMENTS SHALL BE DETERMINED BY THE CONTRACTOR BASED ON FIELD CONDITIONS WITHIN THE WETLAND AND CULTURAL RESOURCES CORRIDORS, SPECIAL LANDOWNER AGREEMENTS AND THE PROJECT BOUNDARY. ALL PROPOSED CRANE PATH AREAS SHALL BE VERIFIED BY THE ENGINEER PRIOR TO CONSTRUCTION.
- EFFORTS SHALL BE MADE TO MINIMIZE SOIL DISTURBANCE TO AREAS OUTSIDE OF THE ROAD GRADING LIMITS, CRANE PATHS, AND TURBINE SITES. DISTURBANCE SHALL BE LIMITED TO 50 LF WITHIN FOR PROPOSED ACCESS ROADS AND 50 LF FOR CRANE PATHS AND SHALL BE LIMITED TO A 175 LF RADIUS FOR PROPOSED WIND TURBINE GENERATORS. THE GRADING LIMITS SHALL BE CENTERED ON THE ROADWAYS AND WIND TURBINES. THE CONTRACTOR SHALL MAKE ALL EFFORTS TO KEEP ACTIVITIES WITHIN THE ERECTION AREAS SHOWN ON THE PLANS BUT IT IS UNDERSTOOD THAT SOME ACTIVITIES THAT WILL NOT REQUIRE GRADING OR SOIL DISTURBANCE MAY EXTEND BEYOND THE DEFINED LIMITS. DURING ERECTION OF THE ROTORS, TRUCKS AND/OR FORKLEIFTS MAY EXTEND BEYOND THESE LIMITS. SEE DETAIL T501 FOR TYPICAL ERECTION AREAS.
- TRUCK TURNAROUNDS ARE NOT SHOWN ON THE PLANS. GENERAL CONTRACTOR TO COORDINATE AND ASSIST WITH TRUCK TURNAROUNDS WHERE NECESSARY.
- AN ALTA SURVEY HAS BEEN PROVIDED BY WESTWOOD PROFESSIONAL SERVICES. CONTRACTOR AND OWNER ARE RESPONSIBLE FOR LOCATING ALL UTILITIES AND VERIFYING LOCATION OF CONSTRUCTION ACTIVITIES PRIOR TO COMMENCING WORK.
- PLANS DO NOT DETAIL VARIOUS COUNTY/TOWNSHIP ROAD SECTION UPGRADES OR WIDENING REQUIRED FOR CONSTRUCTION DELIVERIES PER THE ROAD MAINTENANCE AGREEMENT BETWEEN PROJECT OWNER AND PAULding COUNTY.
- THERE IS HIGH LIKELIHOOD THAT EXISTING DRAINAGE WILL BE IMPACTED. WESTWOOD HAS NOT PROVIDED EXISTING DRAINAGE INFORMATION PRIOR TO DESIGN. CONTRACTOR SHALL NOTIFY LANDOWNER AND PROJECT OWNER UPON DISTURBANCE OF EXISTING DRAINAGE. IT WILL BE THE RESPONSIBILITY OF THE CONTRACTOR TO REPLACE/RECONSTRUCT IMPACTED DRAINAGE IN ORDER TO MAINTAIN CONFORMANCE OF DRAINAGE PLANS AS IN PRE-CONSTRUCTION CONDITIONS.
- EXISTING TURBINE ACCESS ROADS CONSTRUCTED PRIOR TO 2017 SHALL BE REVIEWED BY THE CONTRACTOR AND PROJECT OWNER PRIOR TO CONSTRUCTION DELIVERIES AND SHALL MEET THE REQUIREMENTS OF SECTION 7 EXISTING TURBINE ACCESS ROADS UNDER SUBGRADE COMPACTION, TEST ROLLING AND AGGREGATE BASE COMPACTION.

Westwood

Westwood Professional Services, Inc.  
1000 E. White Ave.  
Chino, IL 60410  
Tel: 630-801-0880  
Fax: 630-801-0881  
www.westwoodps.com



Project: Northwest Ohio Wind Project  
Location: Chino, IL  
Owner: Trishe Wind Ohio, LLC  
Engineer: Daniel Beckmann  
Contract No.: 2017-001  
Revision: 1  
Date: 10/18/2017  
Issued for Construction



1000 E. White Ave.  
Chino, IL 60410

Trishe Wind Ohio, LLC  
c/o Barr Engineering Group, LLC  
8 Glenview Office Park, 2nd Floor  
Glenview, IL 60048

Northwest Ohio Wind Project  
Paulding, Ohio

Construction Notes

Issued For Construction

Army Updated: 09/18/2017

Date: 10/18/2017

Sheet: 9 of 34

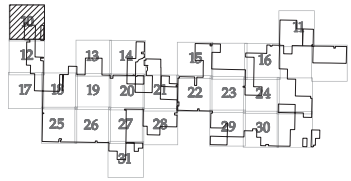
002718-002719.dwg



SEE SHEET 12

- LEGEND:**
- T-01 TURBINE LOCATION
  - TURBINE NUMBER
  - PROPOSED ACCESS ROAD
  - PROPOSED CRANE PATH
  - PROPOSED UNDERGROUND COLLECTION
  - PROPOSED DISTURBANCE LIMITS
  - PROPOSED EROSION/SEDIMENT CONTROL
  - EXISTING OVERHEAD POWER
  - EXISTING OIL/GAS PIPELINE
  - EXISTING TELEPHONE LINE
  - EXISTING CABLE LINE
  - EXISTING RIGHT OF WAY
  - EXISTING 10' CONTOURS
  - EXISTING 2' CONTOURS
  - DELINEATED WETLAND
  - EXISTING ROAD
  - OUT OF PROJECT BOUNDARY
  - FEMA FLOODPLAIN BOUNDARY
  - PROPOSED CULVERT
  - POTENTIAL CRANE MAT LOCATIONS

NOTE: PLANS DO NOT DETAIL VARIOUS COUNTY/TOWNSHIP ROAD SECTION UPGRADES OR WIDENING REQUIRED FOR CONSTRUCTION DELIVERIES PER THE ROAD MAINTENANCE AGREEMENT BETWEEN PROJECT OWNER AND PAULDING COUNTY.



KEY MAP

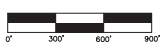


Drawn by	SSG
Checked by	SSG
Designed by	SSG
As-Built Drawing	
Revisions	
1. 08/01/17	SSG
2. 08/01/17	SSG
3. 08/01/17	SSG
4. 08/01/17	SSG
5. 10/18/17	Issued for Construction

Prepared for:



White Wind Ohio, LLC  
c/o Raymond Energy Group, LLC  
9 Greenwich Office Park, 2nd Floor  
Greenwich, CT 06830



# Northwest Ohio Wind Project

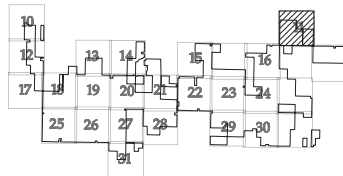
Paulding, Ohio

Civil Site Plan T-01

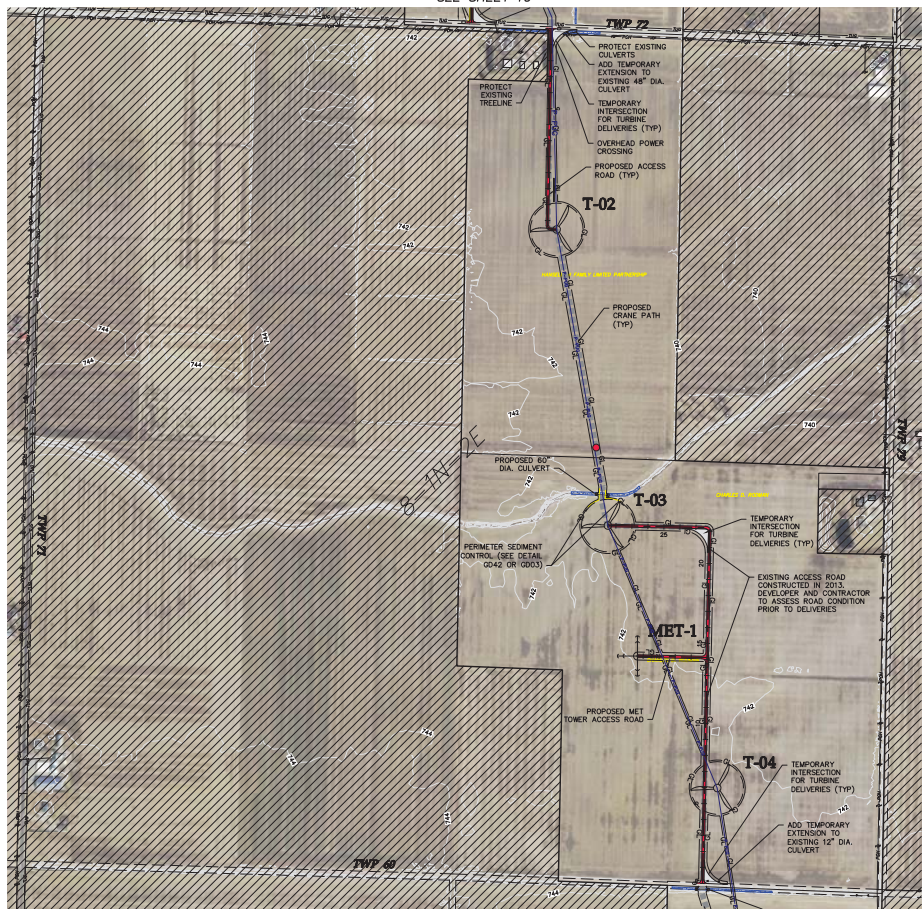
Issued For Construction  
Army Updated: 09/18/2017  
Date: 10/18/2017  
Sheet: 10 of 34

0027188-000P101.dwg





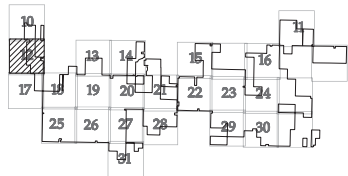
0007184-00SPF01.dwg



SEE SHEET 17

- | LEGEND: |                                   |
|---------|-----------------------------------|
|         | TURBINE LOCATION                  |
|         | TURBINE NUMBER                    |
|         | PROPOSED ACCESS ROAD              |
|         | PROPOSED CRANE PATH               |
|         | PROPOSED UNDERGROUND COLLECTION   |
|         | PROPOSED DISTURBANCE LIMITS       |
|         | PROPOSED EROSION/SEDIMENT CONTROL |
|         | EXISTING OVERHEAD POWER           |
|         | EXISTING OIL/GAS PIPELINE         |
|         | EXISTING TELEPHONE LINE           |
|         | EXISTING CABLE LINE               |
|         | EXISTING RIGHT OF WAY             |
|         | EXISTING 10' CONTOURS             |
|         | EXISTING 2' CONTOURS              |
|         | DELIMITED WETLAND                 |
|         | EXISTING ROAD                     |
|         | OUT OF PROJECT BOUNDARY           |
|         | FEMA FLOODPLAIN BOUNDARY          |
|         | PROPOSED CULVERT                  |
|         | POTENTIAL CRANE MAT LOCATIONS     |

NOTE: PLANS DO NOT DETAIL VARIOUS COUNTY/TOWNSHIP ROAD SECTION UPGRADES OR WIDENING REQUIRED FOR CONSTRUCTION DELIVERIES PER THE ROAD MAINTENANCE AGREEMENT BETWEEN PROJECT OWNER AND PAULDING COUNTY.



### KEY MAP

Design	200
Checked	80
Drawn	200

**As-Built Drawings**

Revision	Date	Description
A	09/01/17	60% plans
B	09/07/17	90% plans
C	09/11/17	90% plans
D	09/22/17	100% plans
O	10/18/17	Issued for Construction

Prepared for:



5900 E. White Ave  
Chicago, IN 47532

Trighe Wind Ohio, LLC  
c/o Starwood Energy Group, LLC  
5 Greenwich Office Park, 2nd Floor  
Greenwich, CT 06831



## Northwest Ohio Wind Project

Civil Site Plan T-2,  
T-3, T-4

**Issued For Construction**

Array Updated: 09/18/2017

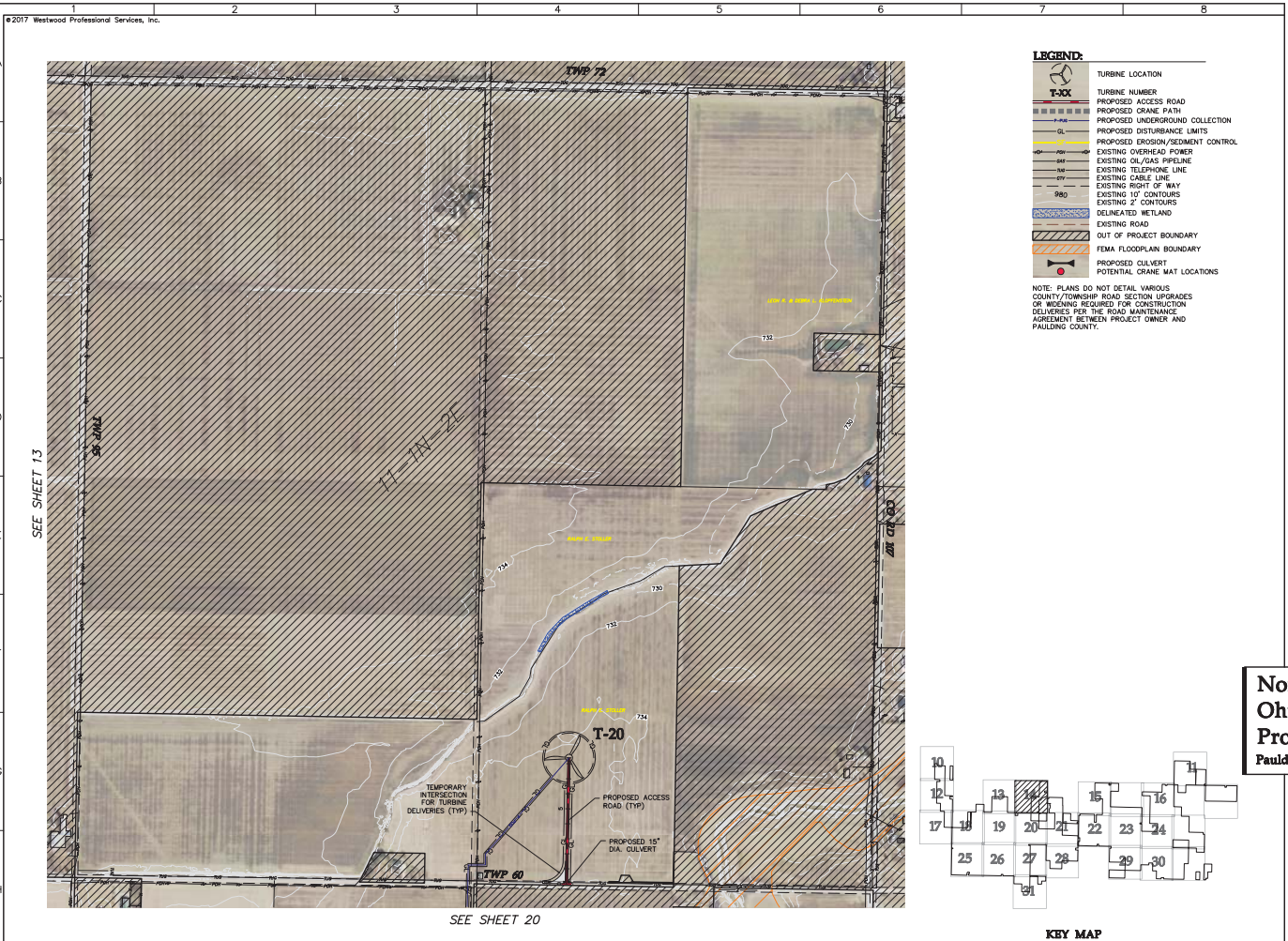
Date: 10/18/2017

Sheet: 12 of 34

0007186-00SPF01.dwg



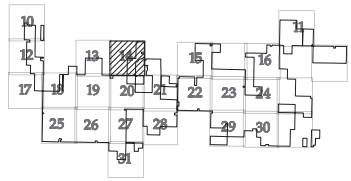




**LEGEND:**

T-20	TURBINE LOCATION
---	TURBINE NUMBER
---	PROPOSED ACCESS ROAD
---	PROPOSED CRANE PATH
---	PROPOSED UNDERGROUND COLLECTION
---	PROPOSED DISTURBANCE LIMITS
---	PROPOSED EROSION/SEDIMENT CONTROL
---	EXISTING OVERHEAD POWER
---	EXISTING OIL/GAS PIPELINE
---	EXISTING TELEPHONE LINE
---	EXISTING CABLE LINE
---	EXISTING RIGHT OF WAY
---	EXISTING 10' CONTOURS
---	EXISTING 2' CONTOURS
---	DELINEATED WETLAND
---	EXISTING ROAD
---	OUT OF PROJECT BOUNDARY
---	FEMA FLOODPLAIN BOUNDARY
---	PROPOSED CULVERT
---	POTENTIAL CRANE MAT LOCATIONS

NOTE: PLANS DO NOT DETAIL VARIOUS COUNTY/TOWNSHIP ROAD SECTION UPGRADES OR WIDENING REQUIRED FOR CONSTRUCTION DELIVERIES PER THE ROAD MAINTENANCE AGREEMENT BETWEEN PROJECT OWNER AND PAULDING COUNTY.



**Westwood**

Westwood Professional Services, Inc.

10-18-2017

**Northwest Ohio Wind Project**

Paulding, Ohio

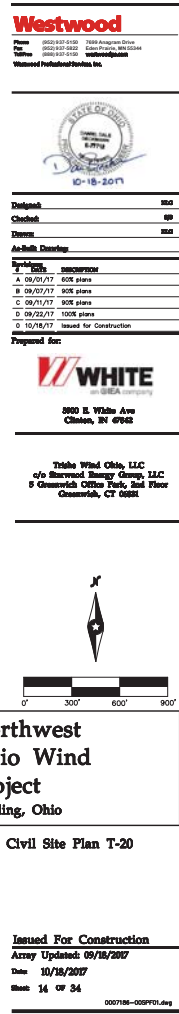
Civil Site Plan T-20

**Issued For Construction**

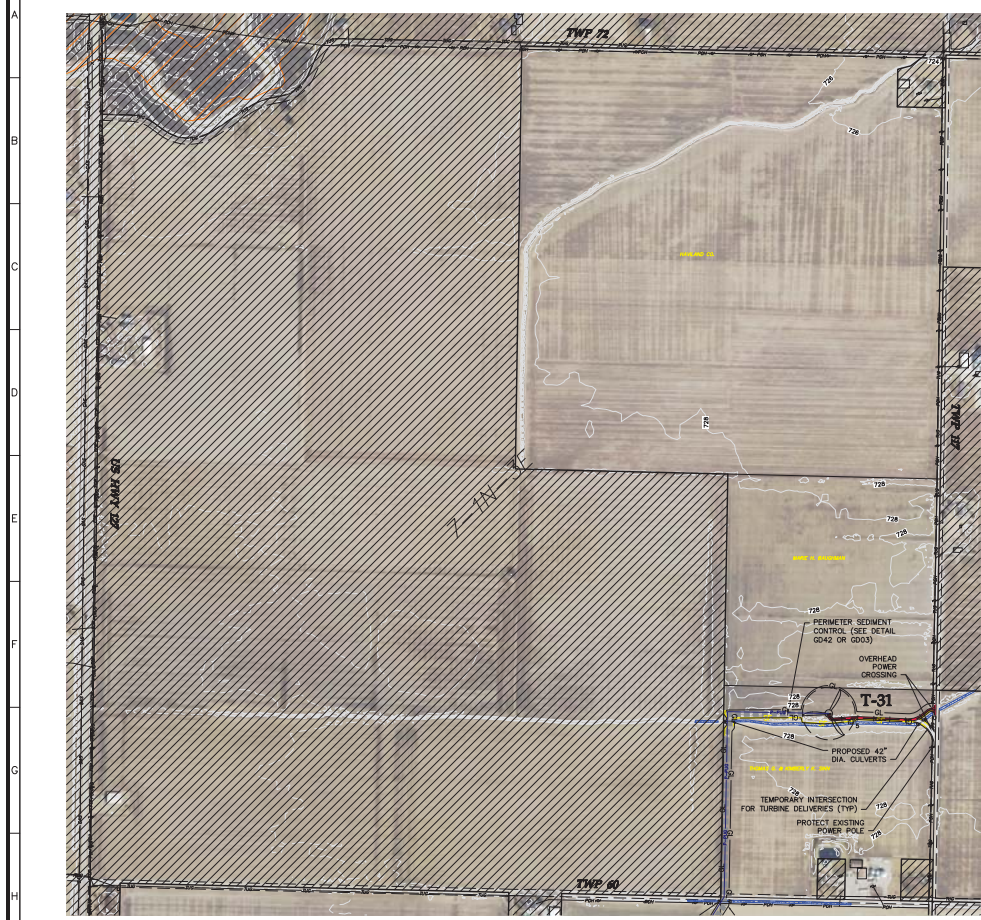
Army Updated: 09/18/2017

Date: 10/18/2017

Sheet: 14 OF 34



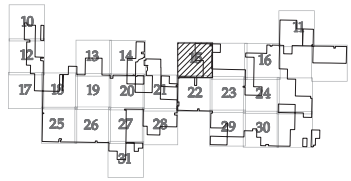




SEE SHEET 22

- LEGEND:**
- TURBINE LOCATION
  - TURBINE NUMBER
  - PROPOSED ACCESS ROAD
  - PROPOSED CRANE PATH
  - PROPOSED UNDERGROUND COLLECTION
  - PROPOSED DISTURBANCE LIMITS
  - PROPOSED EROSION/SEDIMENT CONTROL
  - EXISTING OVERHEAD POWER
  - EXISTING OIL/GAS PIPELINE
  - EXISTING TELEPHONE LINE
  - EXISTING CABLE LINE
  - EXISTING RIGHT OF WAY
  - EXISTING 10' CONTOURS
  - EXISTING 2' CONTOURS
  - DELINEATED WETLAND
  - EXISTING ROAD
  - OUT OF PROJECT BOUNDARY
  - FEMA FLOODPLAIN BOUNDARY
  - PROPOSED CULVERT
  - POTENTIAL CRANE MAT LOCATIONS

NOTE: PLANS DO NOT DETAIL VARIOUS COUNTY/TOWNSHIP ROAD SECTION UPGRADES OR WIDENING REQUIRED FOR CONSTRUCTION DELIVERIES PER THE ROAD MAINTENANCE AGREEMENT BETWEEN PROJECT OWNER AND PAULDING COUNTY.



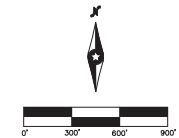
KEY MAP



Drawn by	SSD
Checked by	SSD
Designed by	SSD
As-Built Drawing	
Revisions	
1. 08/11/17	SSD
2. 08/11/17	SSD
3. 08/11/17	SSD
4. 08/11/17	SSD
5. 10/18/17	Issued for Construction

**WHITE**  
ENGINEERS  
300 E. White Ave  
Chiles, IN 47922

White Wind Ohio, LLC  
c/o Raymond Young Group, LLC  
9 Greenwich Office Park, 2nd Floor  
Greenwich, CT 06830

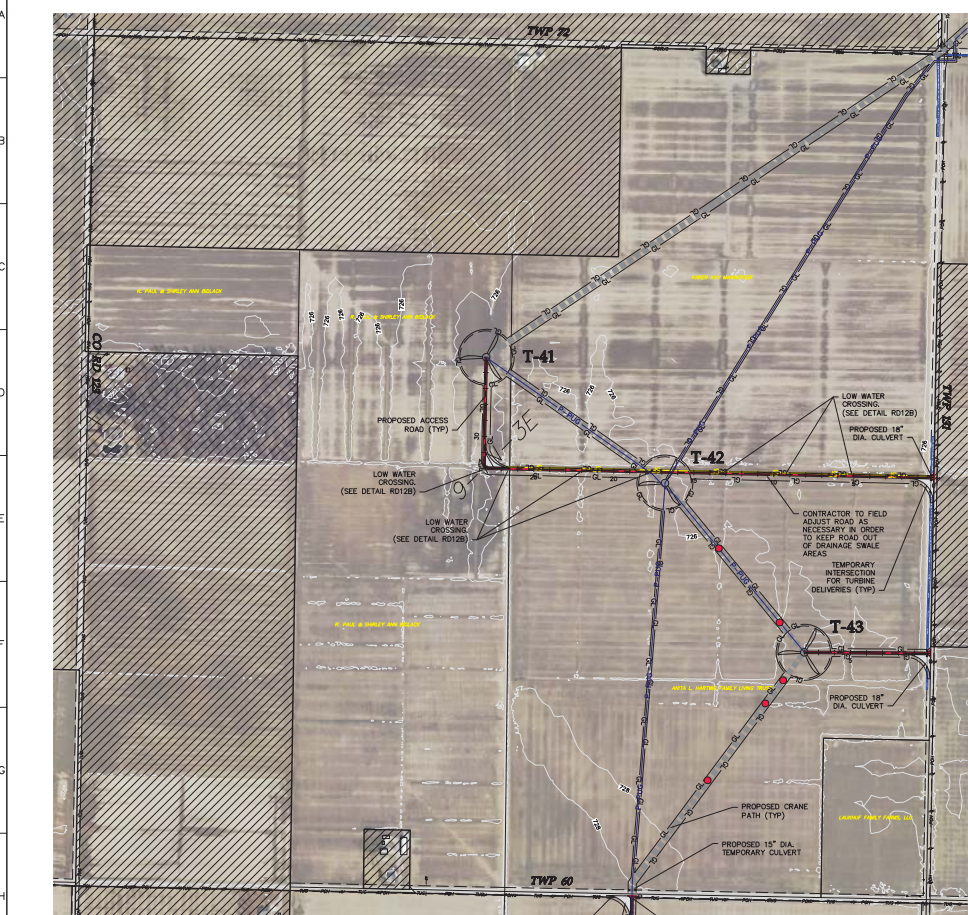


# Northwest Ohio Wind Project

Paulding, Ohio

Civil Site Plan T-31

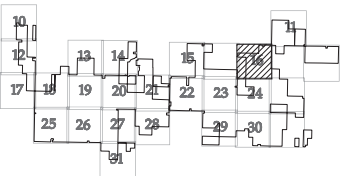
Issued For Construction  
Army Updated: 08/18/2017  
Date: 10/18/2017  
Sheet: 15 of 34



SEE SHEET 24

- LEGEND:**
- T-XXX TURBINE LOCATION
  - PROPOSED ACCESS ROAD
  - PROPOSED CRANE PATH
  - PROPOSED UNDERGROUND COLLECTION
  - PROPOSED DISTURBANCE LIMITS
  - PROPOSED EROSION/SEDIMENT CONTROL
  - EXISTING OVERHEAD POWER
  - EXISTING OIL/GAS PIPELINE
  - EXISTING TELEPHONE LINE
  - EXISTING CABLE LINE
  - EXISTING RIGHT OF WAY
  - EXISTING 10' CONTOURS
  - EXISTING 2' CONTOURS
  - DELINEATED WETLAND
  - EXISTING ROAD
  - OUT OF PROJECT BOUNDARY
  - FEMA FLOODPLAIN BOUNDARY
  - PROPOSED CULVERT
  - POTENTIAL CRANE MAT LOCATIONS

NOTE: PLANS DO NOT DETAIL VARIOUS COUNTY/TOWNSHIP ROAD SECTION UPGRADES OR WIDENING REQUIRED FOR CONSTRUCTION DELIVERIES PER THE ROAD MAINTENANCE AGREEMENT BETWEEN PROJECT OWNER AND PAULDING COUNTY.



KEY MAP

**Westwood**

PAULDING COUNTY, OHIO  
10-18-2017

**STATE OF OHIO**  
PAULDING COUNTY  
10-18-2017

**Checklist:**

Item	Status
Design	100%
Construction	100%

**As-Built Drawing:**

Item	Status
Design	100%
Construction	100%

**Prepared For:**

**WHITE**  
1000 E. White Ave  
Chiles, IN 47522

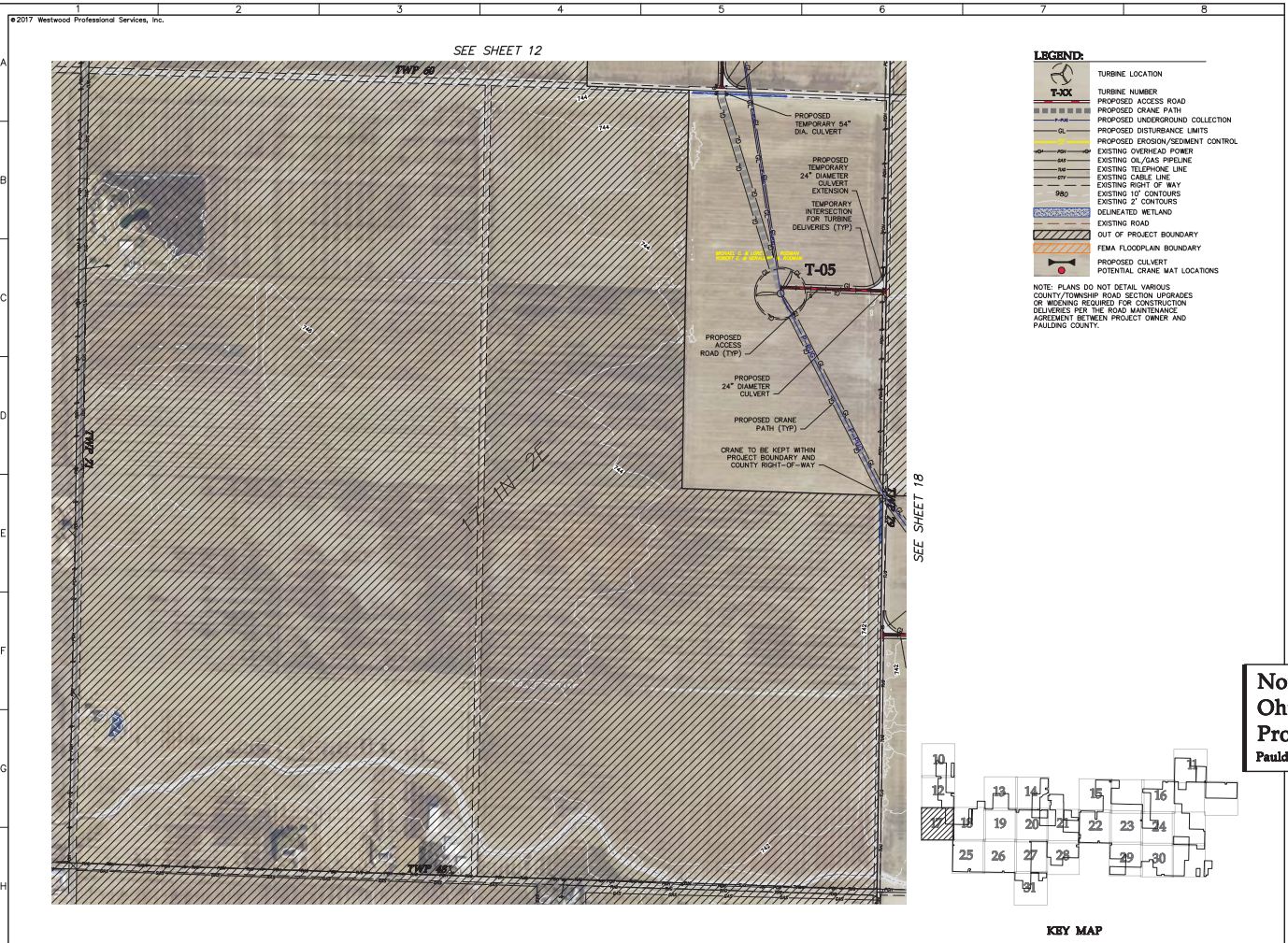
**Northwest Ohio Wind Project**  
Paulding, Ohio

**Civil Site Plan T-41, T-42, T-43**

**Issued For Construction**  
Army Updated: 09/18/2017  
Date: 10/18/2017  
Sheet: 16 OF 34

0027188-000P101.dwg





**Westwood**  
Professional Services, Inc.  
1000 E. 12th St., Suite 200  
Canton, OH 44703  
Phone: (330) 452-1234  
Fax: (330) 452-1235  
Email: info@westwoodps.com

**STATE OF OHIO**  
10-18-2017

**Checklist:**

Item	Status
Design	100%
Construction	0%

**As-Built Drawing:**

Item	Status
Design	100%
Construction	0%

**Prepared for:**

**WHITE**  
1000 E. 12th Ave  
Canton, OH 44702

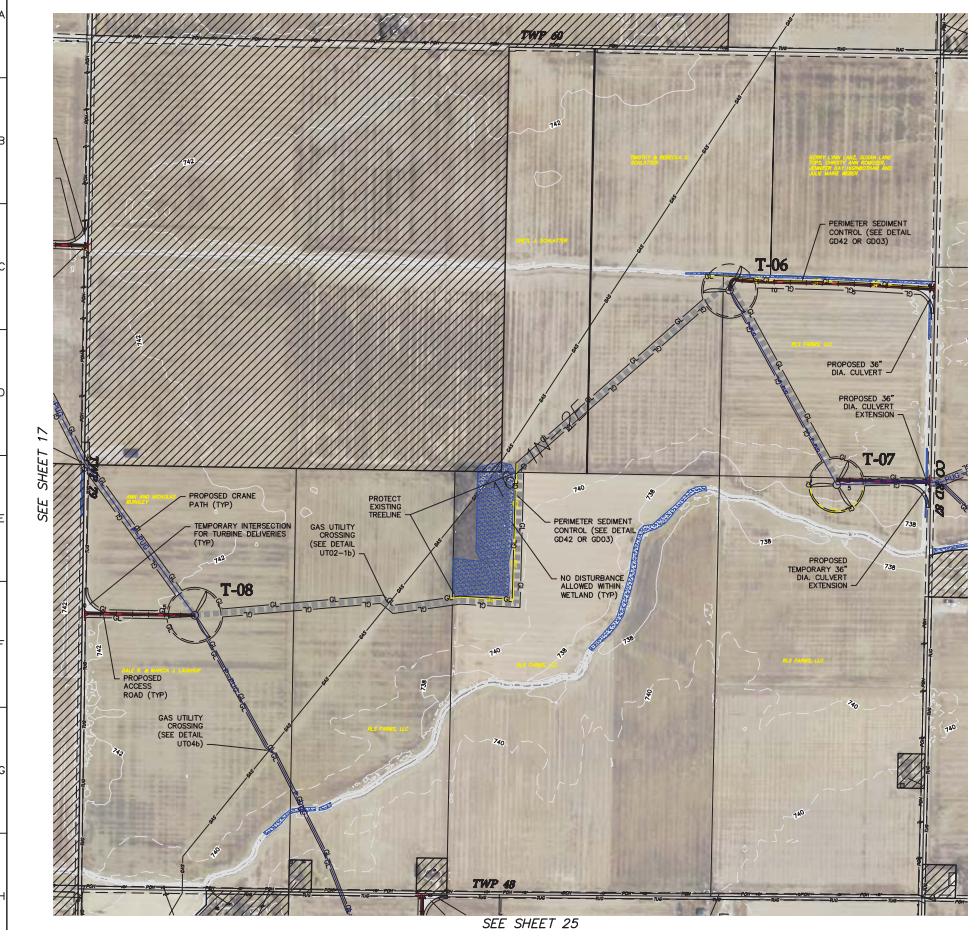
**Northwest Ohio Wind Project**  
Paulding, Ohio

**Civil Site Plan T-05**

**Issued For Construction**  
Army Updated: 09/18/2017  
Date: 10/18/2017  
Sheet: 17 of 34

0027188-000P101.dwg



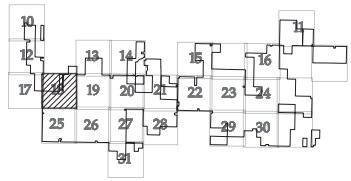


SEE SHEET 25

**LEGEND:**

- TURBINE LOCATION
- TURBINE NUMBER
- PROPOSED ACCESS ROAD
- PROPOSED CRANE PATH
- PROPOSED UNDERGROUND COLLECTION
- PROPOSED DISTURBANCE LIMITS
- PROPOSED EROSION/SEDIMENT CONTROL
- EXISTING OVERHEAD POWER
- EXISTING OIL/GAS PIPELINE
- EXISTING TELEPHONE LINE
- EXISTING CABLE LINE
- EXISTING RIGHT OF WAY
- EXISTING 10' CONTOURS
- EXISTING 2' CONTOURS
- DELINEATED WETLAND
- EXISTING ROAD
- OUT OF PROJECT BOUNDARY
- FEMA FLOODPLAIN BOUNDARY
- PROPOSED CULVERT
- POTENTIAL CRANE MAT LOCATIONS

NOTE: PLANS DO NOT DETAIL VARIOUS COUNTY/TOWNSHIP ROAD SECTION UPGRADES OR WIDENING REQUIRED FOR CONSTRUCTION DELIVERIES PER THE ROAD MAINTENANCE AGREEMENT BETWEEN PROJECT OWNER AND PAULDING COUNTY.



KEY MAP

**Westwood**

2002 E. 10th St. Ste. 200  
Canton, OH 44705  
Phone: (330) 452-1000  
Fax: (330) 452-1001  
www.westwoodps.com

STATE OF OHIO  
Professional Engineer  
No. 1018-2017

Drawn: 100  
Checked: 100  
Issue: 100

As-Built Drawing

Revisions

NO.	DATE	DESCRIPTION
A	09/01/17	10% plans
B	09/07/17	30% plans
C	09/11/17	30% plans
D	09/22/17	100% plans
E	10/18/17	Issued for Construction

Prepared for:

**WHITE**  
CONSULTING ENGINEERS

200 E. White Ave.  
Chiles, IN 47522

White Wind Ohio, LLC  
c/o Barnard Energy Group, LLC  
9 Greenwich Office Park, 2nd Floor  
Greenwich, CT 06830

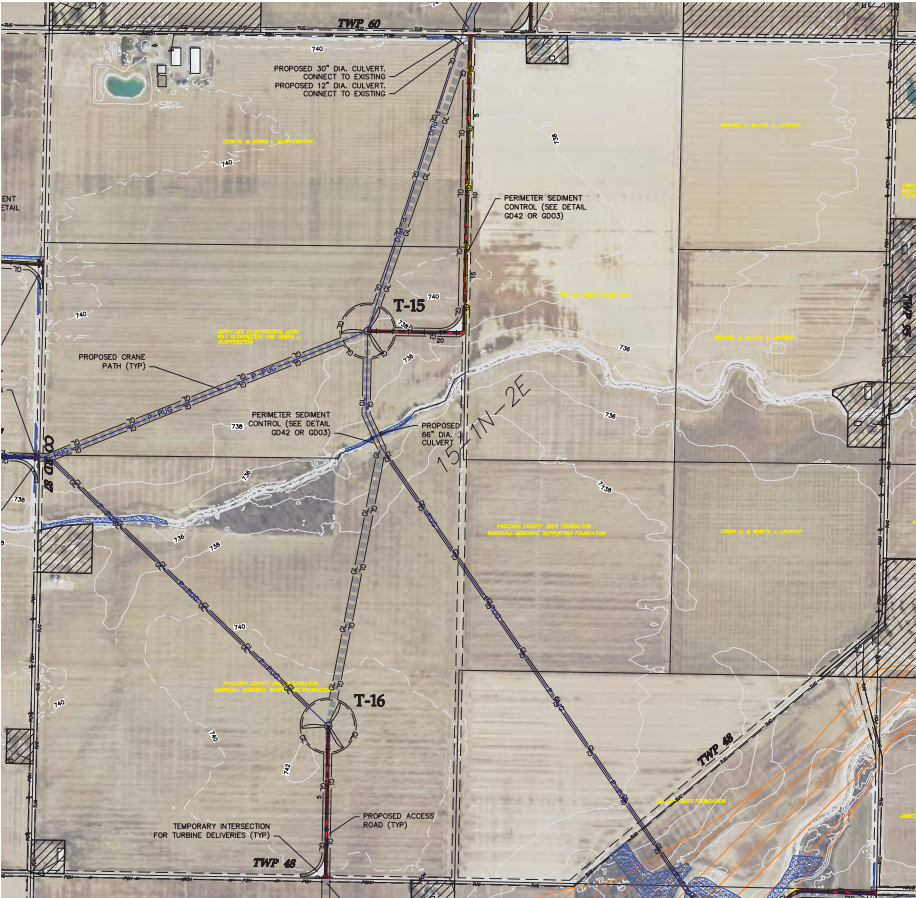
Northwest  
Ohio Wind  
Project  
Paulding, Ohio

Civil Site Plan T-06,  
T-07, T-08

Issued For Construction  
Army Updated: 09/18/2017  
Date: 10/18/2017  
Sheet: 18 of 34

0007188-0007191.dwg

SEE SHEET 13



SEE SHEET 26

**LEGEND:**

T-XX	TURBINE LOCATION
---	TURBINE NUMBER
---	PROPOSED ACCESS ROAD
---	PROPOSED CRANE PATH
---	PROPOSED UNDERGROUND COLLECTION
---	PROPOSED DISTURBANCE LIMITS
---	PROPOSED EROSION/SEDIMENT CONTROL
---	EXISTING OVERHEAD POWER
---	EXISTING OIL/GAS PIPELINE
---	EXISTING TELEPHONE LINE
---	EXISTING CABLE LINE
---	EXISTING RIGHT OF WAY
---	EXISTING 10' CONTOURS
---	EXISTING 2' CONTOURS
---	DELINEATED WETLAND
---	EXISTING ROAD
---	OUT OF PROJECT BOUNDARY
---	FEMA FLOODPLAIN BOUNDARY
---	PROPOSED CULVERT
---	POTENTIAL CRANE MAT LOCATIONS

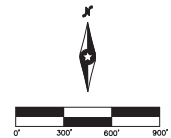
NOTE: PLANS DO NOT DETAIL VARIOUS COUNTY/TOWNSHIP ROAD SECTION UPGRADES OR WIDENING REQUIRED FOR CONSTRUCTION DELIVERIES PER THE ROAD MAINTENANCE AGREEMENT BETWEEN PROJECT OWNER AND PAULDING COUNTY.



Drawn:	300
Checked:	300
Issued:	300
As-Built Drawing:	
Revised:	
1. 08/15/17	00000000
A. 09/01/17	00000000
B. 09/01/17	00000000
C. 09/01/17	00000000
D. 09/01/17	00000000
E. 10/15/17	Issued for Construction



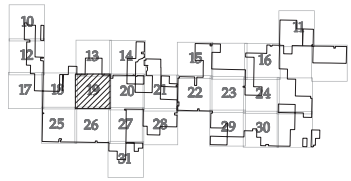
White Wind Ohio, LLC  
c/o Raymond Energy Group, LLC  
9 Greenwich Office Park, 2nd Floor  
Greenwich, CT 06830



# Northwest Ohio Wind Project

Paulding, Ohio

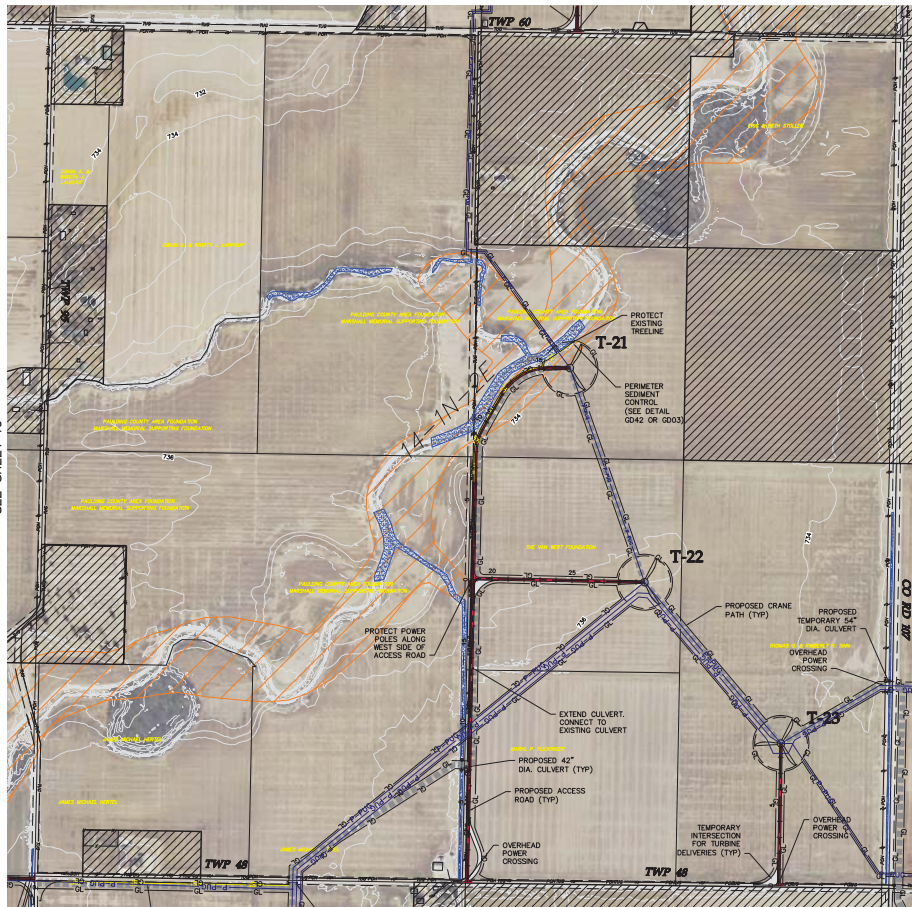
Civil Site Plan T-15, T-16



KEY MAP

Issued For Construction  
Army Updated: 09/18/2017  
Date: 10/18/2017  
Sheet: 19 of 34  
0027188-000P101.dwg

SEE SHEET 14



SEE SHEET 27

**LEGEND:**

- TURBINE LOCATION
- TURBINE NUMBER
- PROPOSED ACCESS ROAD
- PROPOSED CRANE PATH
- PROPOSED UNDERGROUND COLLECTION
- PROPOSED DISTURBANCE LIMITS
- PROPOSED EROSION/SEDIMENT CONTROL
- EXISTING OVERHEAD POWER
- EXISTING OIL/GAS PIPELINE
- EXISTING TELEPHONE LINE
- EXISTING CABLE LINE
- EXISTING RIGHT OF WAY
- EXISTING 10' CONTOURS
- EXISTING 2' CONTOURS
- DELINEATED WETLAND
- EXISTING ROAD
- OUT OF PROJECT BOUNDARY
- FEMA FLOODPLAIN BOUNDARY
- PROPOSED CULVERT
- POTENTIAL CRANE MAT LOCATIONS

NOTE: PLANS DO NOT DETAIL VARIOUS COUNTY/TOWNSHIP ROAD SECTION UPGRADES OR WIDENING REQUIRED FOR CONSTRUCTION DELIVERIES PER THE ROAD MAINTENANCE AGREEMENT BETWEEN PROJECT OWNER AND PAULDING COUNTY.

**Westwood**

Westwood Professional Services, Inc.  
1000 Westwood Drive  
Westwood, Ohio 44091  
Phone: (440) 333-1000  
Fax: (440) 333-1001  
Email: info@westwoodpro.com



Drawn:	300
Checked:	300
Reviewed:	300
As-Built Drawing:	
Revision:	
1. 08/01/17	0000
A. 08/01/17	0000
B. 08/01/17	0000
C. 08/01/17	0000
D. 08/01/17	0000
E. 08/01/17	0000
F. 08/01/17	0000
G. 08/01/17	0000
H. 08/01/17	0000
I. 08/01/17	0000
J. 08/01/17	0000
K. 08/01/17	0000
L. 08/01/17	0000
M. 08/01/17	0000
N. 08/01/17	0000
O. 08/01/17	0000
P. 08/01/17	0000
Q. 08/01/17	0000
R. 08/01/17	0000
S. 08/01/17	0000
T. 08/01/17	0000
U. 08/01/17	0000
V. 08/01/17	0000
W. 08/01/17	0000
X. 08/01/17	0000
Y. 08/01/17	0000
Z. 08/01/17	0000

Prepared for:

**WHITE**  
CONSULTING  
200 E. White Ave  
Cheney, IN 46725

White Wind Ohio, LLC  
c/o Raymond Energy Group, LLC  
9 Greenwich Office Park, 2nd Floor  
Greenwich, CT 06830



**Northwest  
Ohio Wind  
Project**  
Paulding, Ohio

Civil Site Plan T-21,  
T-22, T-23

Issued For Construction

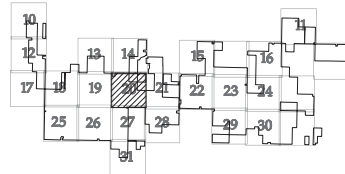
Army Updated: 08/18/2017

Date: 10/18/2017

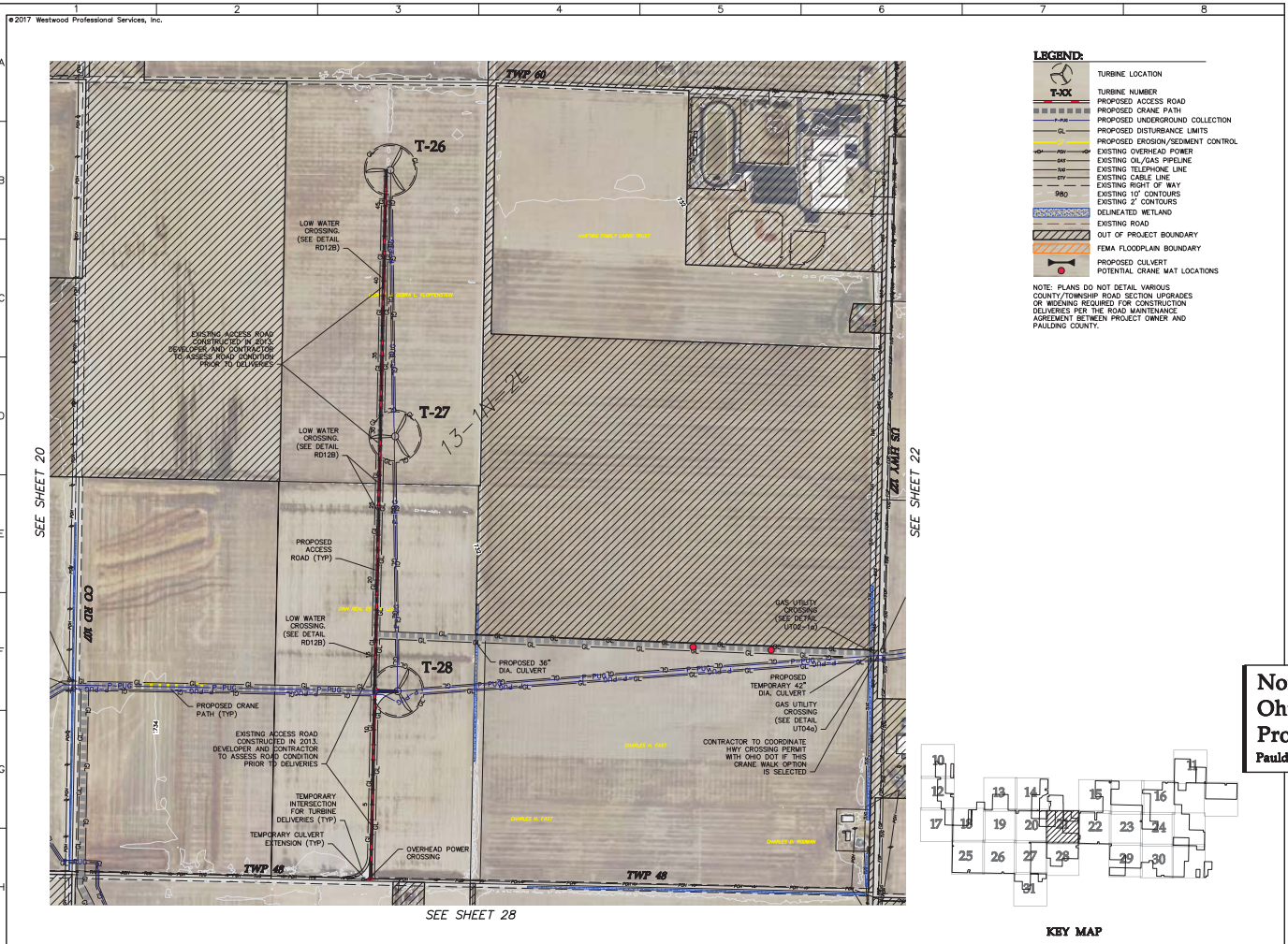
Sheet: 20 of 34

0007188-0007191.dwg

KEY MAP





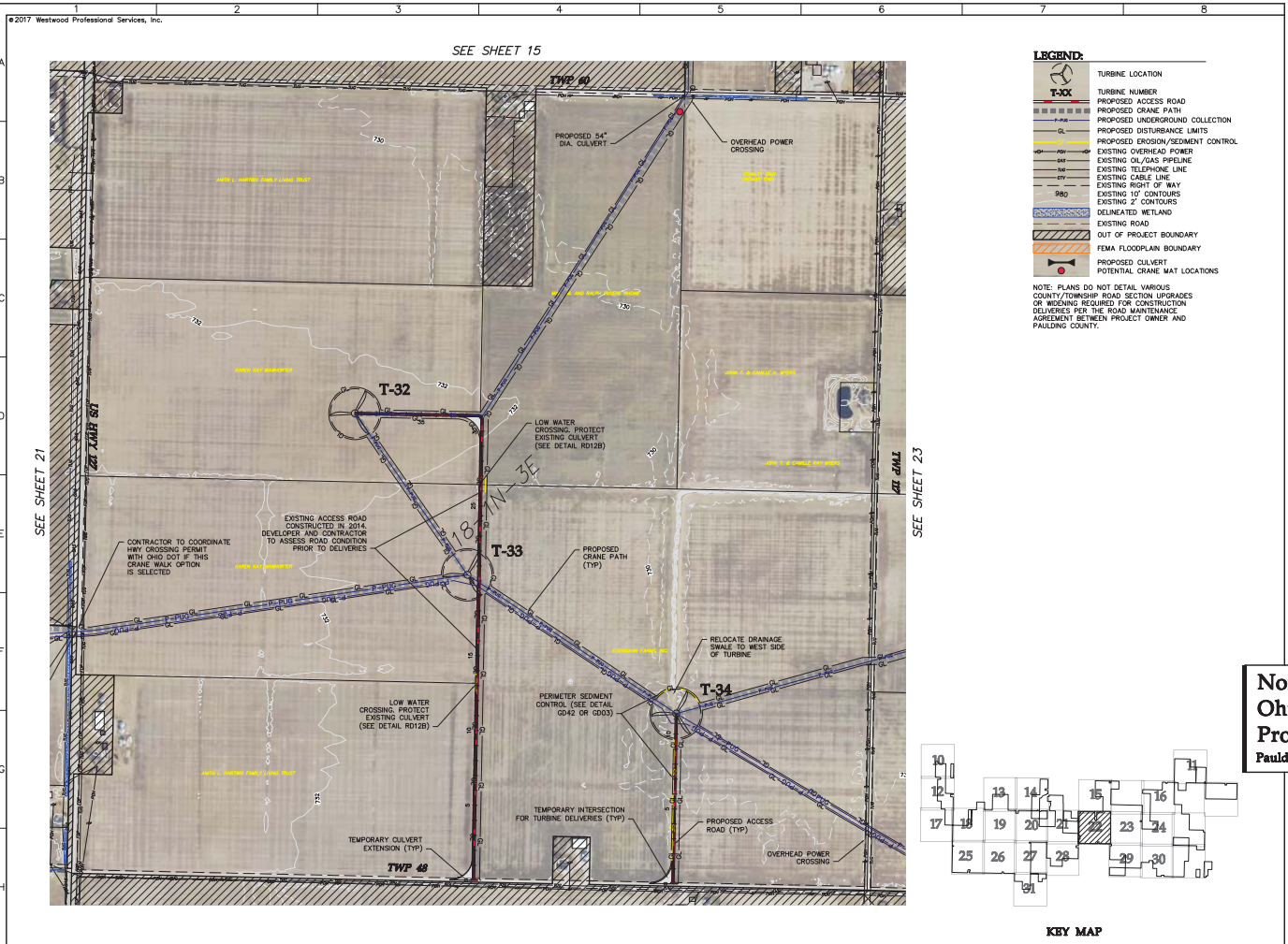


**Westwood**  
Professional Services, Inc.  
10-18-2017

**Northwest Ohio Wind Project**  
Paulding, Ohio

**Civil Site Plan T-26, T-27, T-28**

**Issued For Construction**  
Army Updated: 09/18/2017  
Date: 10/18/2017  
Sheet: 21 of 34



**Westwood**

2007 Westwood Professional Services, Inc.

10-18-2017

**Northwest Ohio Wind Project**

Paulding, Ohio

Civil Site Plan T-32, T-33, T-34

Issued For Construction

Army Updated: 09/18/2017

Date: 10/18/2017

Sheet: 22 of 34

0027188-000P101.dwg



SEE SHEET 29

- NOTE: PLANS DO NOT DETAIL VARIOUS COUNTY/TOWNSHIP ROAD SECTION UPGRADE OR WIDENING REQUIRED FOR CONSTRUCTION DELIVERIES PER THE ROAD MAINTENANCE AGREEMENT BETWEEN PROJECT OWNER AND PAULDING COUNTY.

**From** (952) 937-5150 7699 Anagram Drive  
**Fax** (952) 937-5822 Eden Prairie, MN 55349  
**TollFree** (888) 937-5150 [www.wedge.com](http://www.wedge.com)  
**Woodward Professional Services, Inc.**



#	Date	Description
A	06/01/17	60% plans
B	09/07/17	90% plans
C	09/11/17	90% plans
D	09/22/17	100% plans
O	10/18/17	Issued for Construction

Prepared for:



5900 E. White Ave  
Clinton, IN 47602

Trighe Wind Ohio, LLC  
c/o Starwood Energy Group, LLC  
5 Greenwich Office Park, 2nd Floor  
Greenwich, CT 06831



## Northwest Ohio Wind Project

Civil Site Plan T-36,  
T-37

**Issued For Construction**

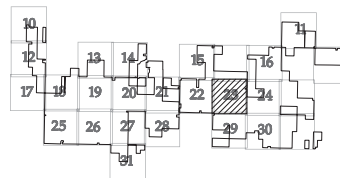
Array Updated: 09/16/2017

Date 10/18/2017

Sheet 23 OF 34

Page 23 of 34

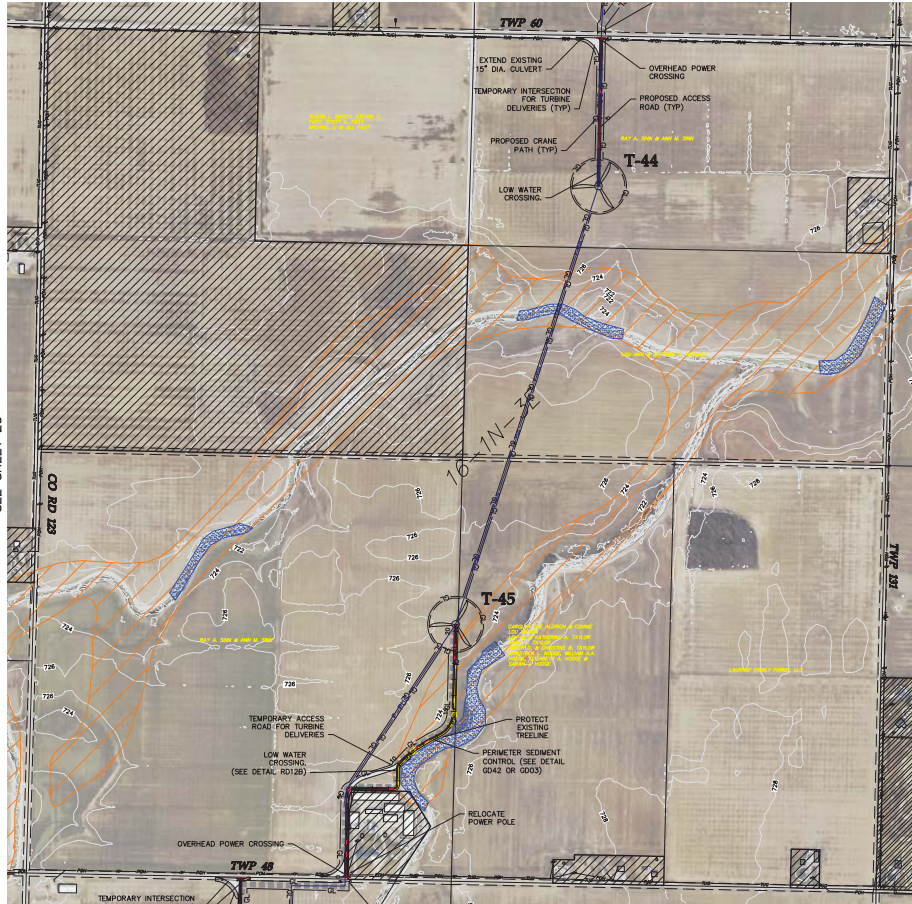
0007344-0269501.doc



### KEY MAP



SEE SHEET 16



SEE SHEET 30

LEGEND:

- TURBINE LOCATION
- TURBINE NUMBER
- PROPOSED ACCESS ROAD
- PROPOSED CRANE PATH
- PROPOSED UNDERGROUND COLLECTION
- PROPOSED DISTURBANCE LIMITS
- PROPOSED EROSION/SEDIMENT CONTROL
- EXISTING OVERHEAD POWER
- EXISTING OIL/GAS PIPELINE
- EXISTING TELEPHONE LINE
- EXISTING CABLE LINE
- EXISTING RIGHT OF WAY
- EXISTING 10' CONTOURS
- EXISTING 2' CONTOURS
- DELINEATED WETLAND
- EXISTING ROAD
- OUT OF PROJECT BOUNDARY
- FEMA FLOODPLAIN BOUNDARY
- PROPOSED CULVERT
- POTENTIAL CRANE MAT LOCATIONS

NOTE: PLANS DO NOT DETAIL VARIOUS COUNTY/TOWNSHIP ROAD SECTION UPGRADES OR WIDENING REQUIRED FOR CONSTRUCTION DELIVERIES PER THE ROAD MAINTENANCE AGREEMENT BETWEEN PROJECT OWNER AND PAULDING COUNTY.

Westwood

Westwood Professional Services, Inc.  
1000 Westwood Drive  
Westwood, MA 01886  
Westwood



Design: 100

Check: 100

Draw: 100

As-Built Drawing

Revised: 100

1. 100

A. 09/01/17 100

B. 09/01/17 100

C. 09/01/17 100

D. 09/01/17 100

E. 10/15/17 100

Prepared for:

WHITE

200 E. White Ave  
Chiles, IN 4752

White Wind Ohio, LLC  
c/o Raymond Energy Group, LLC  
9 Greenwich Office Park, 2nd Floor  
Greenwich, CT 06830

Northwest Ohio Wind Project  
Paulding, Ohio

Civil Site Plan T-44, T-45

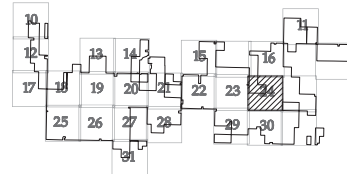
Issued For Construction

Army Updated: 09/18/2017

Date: 10/18/2017

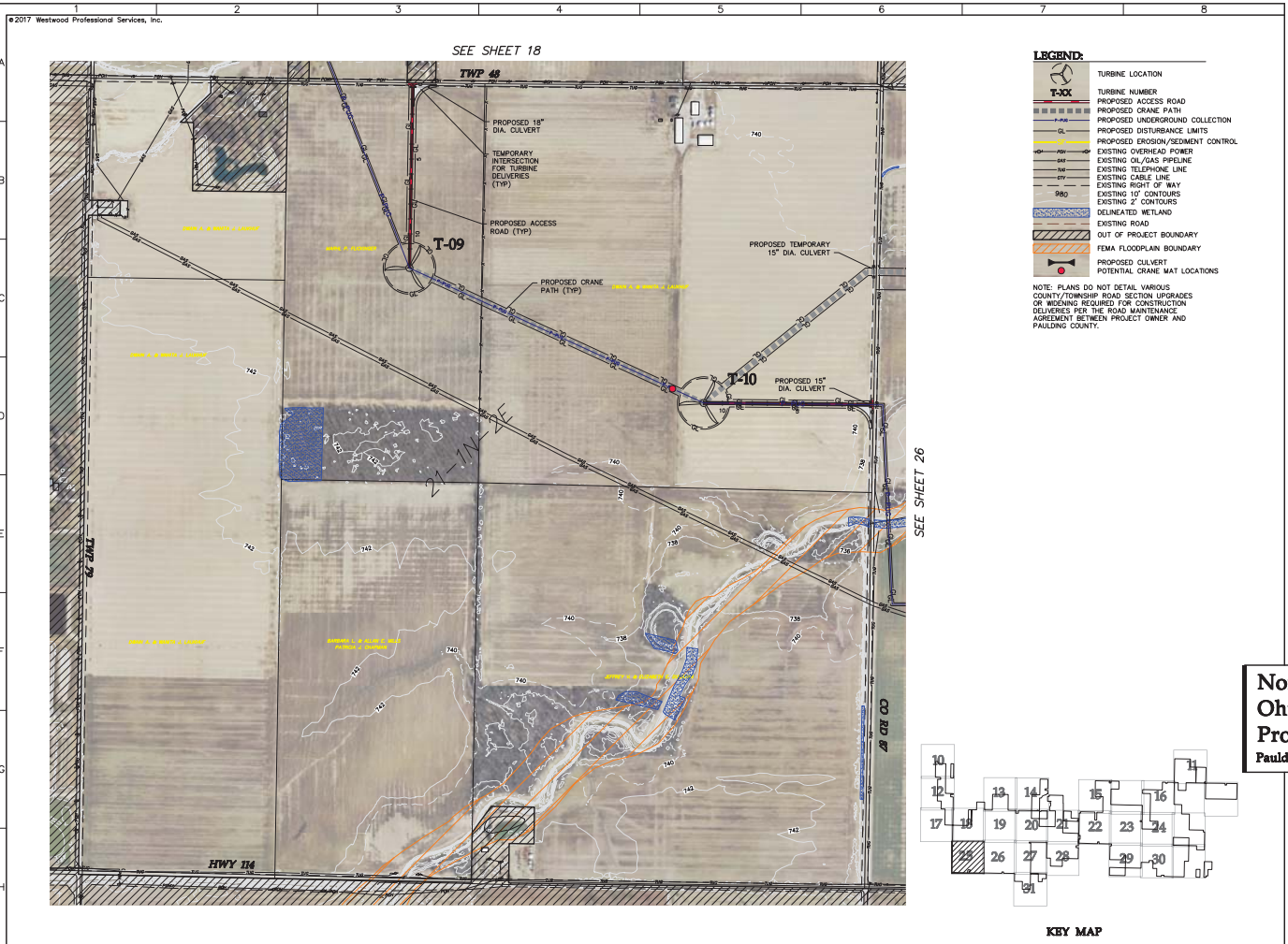
Sheet: 24 of 34

0027188-000P101.dwg



KEY MAP





**Westwood**

Westwood Professional Services, Inc.

10-18-2017

Checklist

Drawn

As-Built Drawing

White Wind Ohio, LLC

200 E. White Ave  
Chiles, IN 4762

Northwest  
Ohio Wind  
Project  
Paulding, Ohio

Civil Site Plan T-09,  
T-10

Issued For Construction

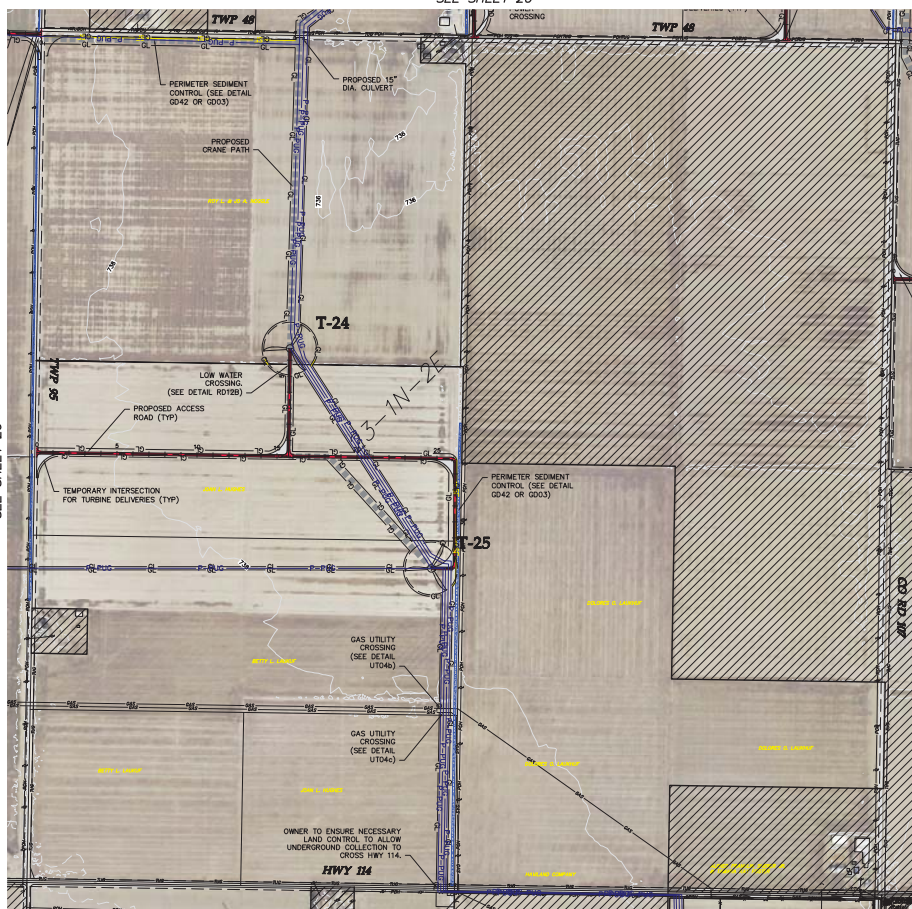
Army Updated: 09/18/2017

Date: 10/18/2017

Sheet: 25 of 34

0027188-000P101.dwg





SEE SHEET 26

SEE SHEET 28

SEE SHEET 31



- 
- TURBINE LOCATION**
- TURBINE NUMBER  
 PROPOSED ACCESS ROAD  
 PROPOSED CRANE PATH  
 PROPOSED UNDERGROUND COLLECTION  
 PROPOSED DISTURBANCE LIMITS  
 PROPOSED FENCE LINE  
 EXISTING OVERHEAD POWER  
 EXISTING OIL & GAS PIPELINE  
 EXISTING TELEPHONE LINE  
 EXISTING CABLE LINE  
 EXISTING RIGHT OF WAY  
 EXISTING 10' CONTOURS  
 EXISTING 2' CONTOURS  
 DELINEATED WETLAND  
 EXISTING ROAD  
 OUT OF PROJECT BOUNDARY  
 FEMA FLOODPLAIN BOUNDARY  
 PROPOSED CULVERT  
 POTENTIAL CRANE MAT LOCATIONS

NOTE: PLANS DO NOT DETAIL VARIOUS COUNTY/TOWNSHIP ROAD SECTION UPGRADES OR WIDENING REQUIRED FOR CONSTRUCTION DELIVERIES PER THE ROAD MAINTENANCE AGREEMENT BETWEEN PROJECT OWNER AND PAULDING COUNTY.

**Phone** (952) 937-5150 7689 Anagram Drive  
**Fax** (952) 937-5822 Eden Prairie, MN 55344  
**TollFree** (800) 937-5150 [info@edps.com](mailto:info@edps.com)

**Woodward Educational Studies, Inc.**



<b>Designed</b>	<b>MD</b>
<b>Checked</b>	<b>MD</b>

As-Built Drawings

Revision	Date	Description
----------	------	-------------

A	09/01/17	60% plans
B	09/07/17	90% plans

C	09/11/17	90% plans
D	09/22/17	100% plans

0	10/18/17	issued for Construction
---	----------	-------------------------

Prepared for:


**WHITE**

an GEA company

5900 E. White Ave  
Chicago, IN 47532

---

Tide Wind City, LLC

c/o Starwood Energy Group, LLC  
5 Greenwich Office Park, 2nd Floor

Greenwich, CT 06831



## Northwest Ohio Wind Project

Civil Site Plan T-24,  
T-25

**Issued For Construction**

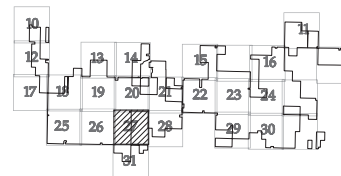
Array Updated: 09/18/2017

Date: 10/18/2017

Sheet 27 of 34

---

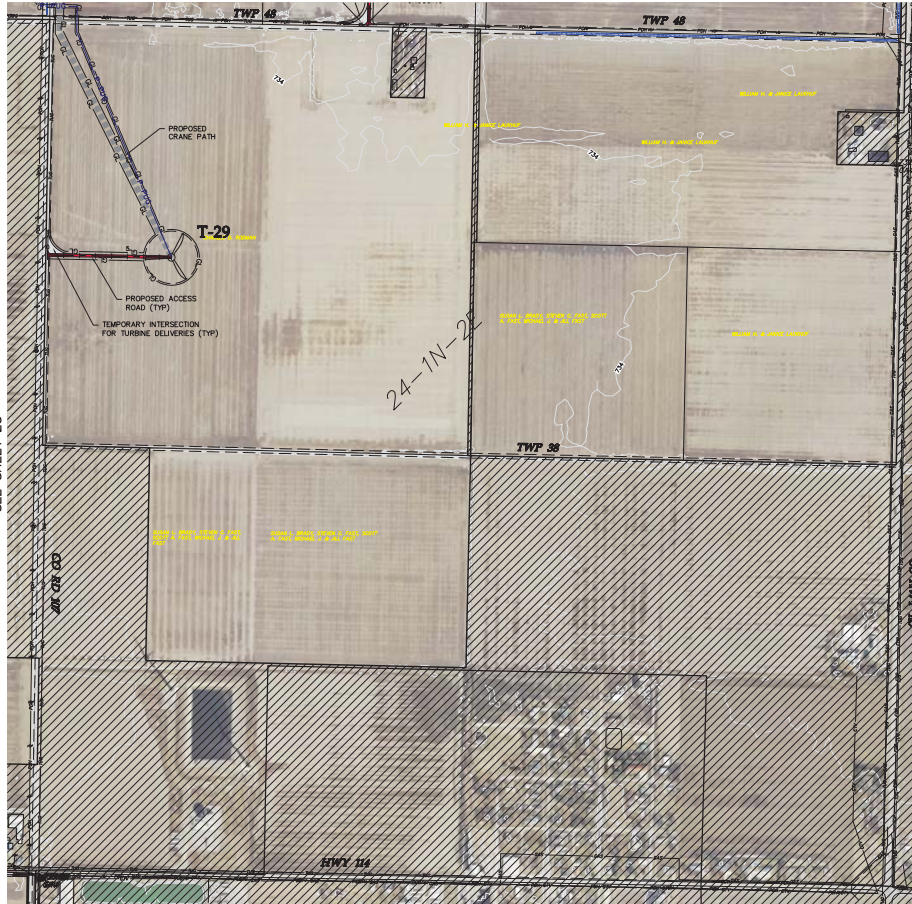
0007188-00SPF01.dwg



### KEY MAP



SEE SHEET 22



**LEGEND:**

- T-XX TURBINE LOCATION
- T-XX TURBINE NUMBER
- PROPOSED ACCESS ROAD
- PROPOSED CRANE PATH
- PROPOSED UNDERGROUND COLLECTION
- PROPOSED DISTURBANCE LIMITS
- PROPOSED EROSION/SEDIMENT CONTROL
- EXISTING OVERHEAD POWER
- EXISTING OIL/GAS PIPELINE
- EXISTING TELEPHONE LINE
- EXISTING CABLE LINE
- EXISTING RIGHT OF WAY
- EXISTING 10' CONTOURS
- EXISTING 2' CONTOURS
- DELINEATED WETLAND
- EXISTING ROAD
- OUT OF PROJECT BOUNDARY
- FEMA FLOODPLAIN BOUNDARY
- PROPOSED CULVERT
- POTENTIAL CRANE MAT LOCATIONS

NOTE: PLANS DO NOT DETAIL VARIOUS COUNTY/TOWNSHIP ROAD SECTION UPGRADES OR WIDENING REQUIRED FOR CONSTRUCTION DELIVERIES PER THE ROAD MAINTENANCE AGREEMENT BETWEEN PROJECT OWNER AND PAULDING COUNTY.

**Westwood**

Westwood Professional Services, Inc.  
1000 E. 12th Ave.  
Columbus, OH 43214  
614.261.1000  
www.westwoodps.com



Drawn: 10/18/2017

Checked: 10/18/2017

Issue: 10/18/2017

As-Built Drawing

Revisions

1. 10/18/2017 10/18/2017

A. 09/01/17 10/18/2017

B. 09/01/17 10/18/2017

C. 09/01/17 10/18/2017

D. 09/01/17 10/18/2017

E. 10/18/17 Issued for Construction

Prepared for:

**WHITE**  
CONSULTING

1000 E. 12th Ave  
Columbus, OH 43214

White Wind Ohio, LLC  
c/o Raymond Energy Group, LLC  
9 Greenwich Office Park, 2nd Floor  
Greenwich, CT 06830



**Northwest  
Ohio Wind  
Project**  
Paulding, Ohio

Civil Site Plan T-29

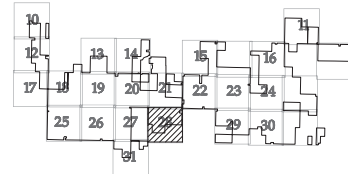
Issued For Construction

Army Updated: 09/18/2017

Date: 10/18/2017

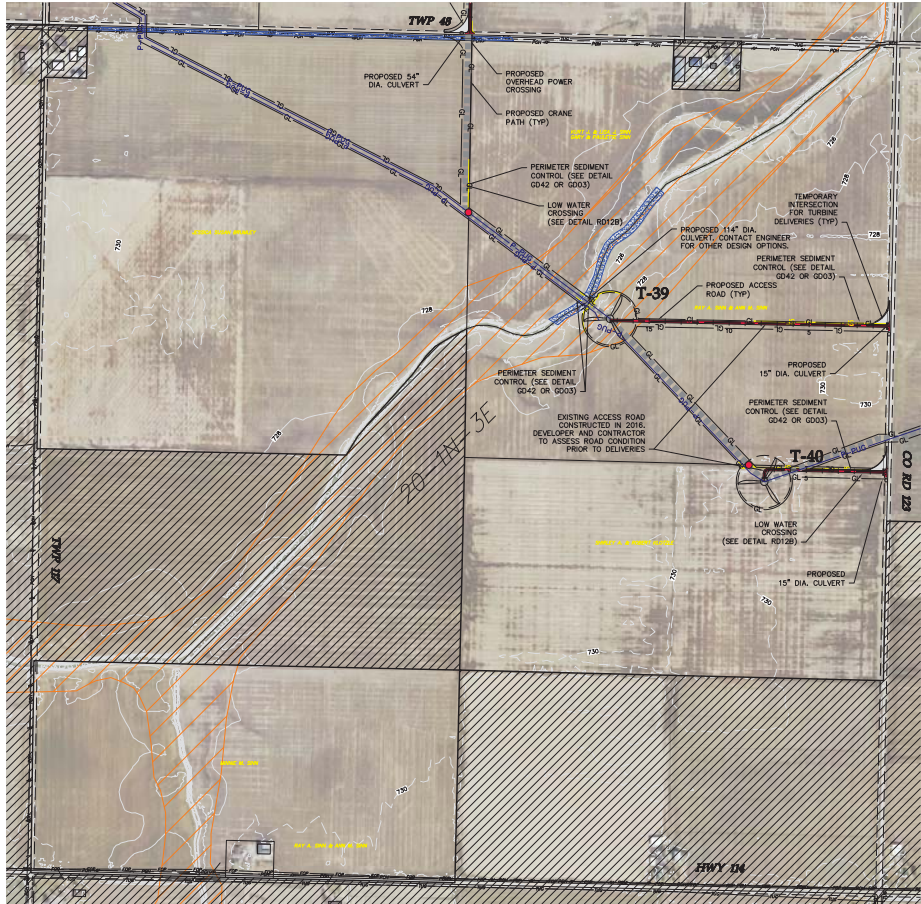
Sheet: 28 of 34

0027188-000P101.dwg



**KEY MAP**

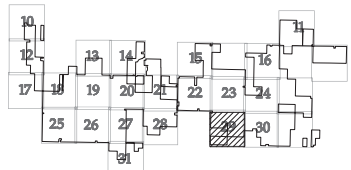
SEE SHEET 23



- LEGEND:**
- TURBINE LOCATION
  - TURBINE NUMBER
  - PROPOSED ACCESS ROAD
  - PROPOSED CRANE PATH
  - PROPOSED UNDERGROUND COLLECTION
  - PROPOSED DISTURBANCE LIMITS
  - PROPOSED EROSION/SEDIMENT CONTROL
  - EXISTING OVERHEAD POWER
  - EXISTING OIL/GAS PIPELINE
  - EXISTING TELEPHONE LINE
  - EXISTING CABLE LINE
  - EXISTING RIGHT OF WAY
  - EXISTING 10' CONTOURS
  - EXISTING 2' CONTOURS
  - DELINEATED WETLAND
  - EXISTING ROAD
  - OUT OF PROJECT BOUNDARY
  - FEMA FLOODPLAIN BOUNDARY
  - PROPOSED CULVERT
  - POTENTIAL CRANE MAT LOCATIONS

NOTE: PLANS DO NOT DETAIL VARIOUS COUNTY/TOWNSHIP ROAD SECTION UPGRADES OR WIDENING REQUIRED FOR CONSTRUCTION DELIVERIES PER THE ROAD MAINTENANCE AGREEMENT BETWEEN PROJECT OWNER AND PAULDING COUNTY.

SEE SHEET 30



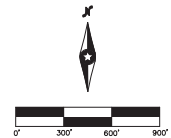
KEY MAP



Drawn:	300
Checked:	300
Issued:	300
As-Built Drawing:	
Revised:	
1. 08/11/17	0000000000
A. 08/11/17	0000000000
B. 08/11/17	0000000000
C. 08/11/17	0000000000
D. 08/11/17	0000000000
E. 10/18/17	Issued for Construction



White Wind Ohio, LLC  
c/o Raymond Young Group, LLC  
9 Greenwich Office Park, 2nd Floor  
Greenwich, CT 06830



# Northwest Ohio Wind Project

Paulding, Ohio

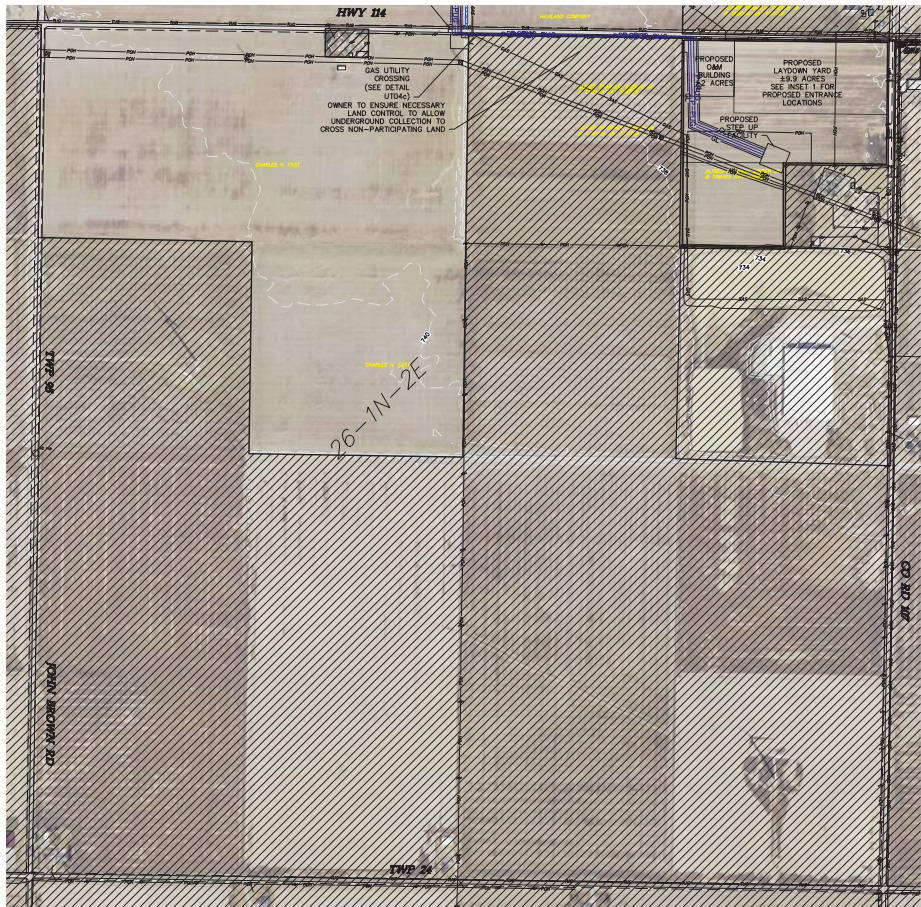
Civil Site Plan T-39, T-40

Issued For Construction  
Army Updated: 09/18/2017  
Date: 10/18/2017  
Sheet: 29 of 34  
0027188-000P101.dwg





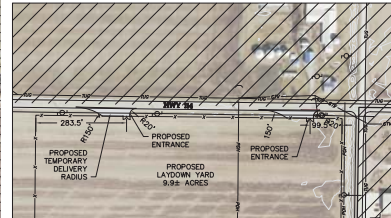
SEE SHEET 27



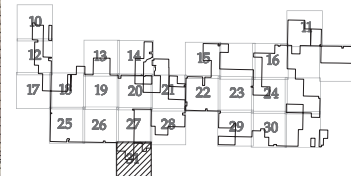
LEGEND:

- TURBINE LOCATION
- TURBINE NUMBER
- PROPOSED ACCESS ROAD
- PROPOSED CRANE PATH
- PROPOSED UNDERGROUND COLLECTION
- PROPOSED DISTURBANCE LIMITS
- PROPOSED EROSION/SEDIMENT CONTROL
- EXISTING OVERHEAD POWER
- EXISTING OIL/GAS PIPELINE
- EXISTING TELEPHONE LINE
- EXISTING CABLE LINE
- EXISTING RIGHT OF WAY
- EXISTING 10' CONTOURS
- EXISTING 2' CONTOURS
- DELINEATED WETLAND
- EXISTING ROAD
- OUT OF PROJECT BOUNDARY
- FEMA FLOODPLAIN BOUNDARY
- PROPOSED CULVERT
- POTENTIAL CRANE MAT LOCATIONS

NOTE: PLANS DO NOT DETAIL VARIOUS COUNTY/TOWNSHIP ROAD SECTION UPGRADES OR WIDENING REQUIRED FOR CONSTRUCTION DELIVERIES PER THE ROAD MAINTENANCE AGREEMENT BETWEEN PROJECT OWNER AND PAULDING COUNTY.



INSET 1  
T=150'



KEY MAP

Westwood

Westwood Professional Services, Inc.  
1000 E. White Ave.  
Chiles, IN 47520  
Phone: 812.451.1000  
Fax: 812.451.1001  
Email: info@westwoodps.com



Drawn: 10/18/2017

Checked: 10/18/2017

Designed: 10/18/2017

As-Built Drawing: 10/18/2017

Revised: 10/18/2017

Revised: 10/18/2017

Revised: 10/18/2017

Revised: 10/18/2017

Revised: 10/18/2017

Revised: 10/18/2017

Revised: 10/18/2017

Revised: 10/18/2017

Revised: 10/18/2017

Revised: 10/18/2017

Revised: 10/18/2017

Revised: 10/18/2017

Revised: 10/18/2017

Revised: 10/18/2017

Revised: 10/18/2017

Revised: 10/18/2017

Revised: 10/18/2017

Revised: 10/18/2017

Revised: 10/18/2017

Revised: 10/18/2017

Revised: 10/18/2017

Revised: 10/18/2017

Revised: 10/18/2017

Revised: 10/18/2017

Revised: 10/18/2017

Revised: 10/18/2017

Revised: 10/18/2017

Revised: 10/18/2017

Revised: 10/18/2017

Revised: 10/18/2017

Revised: 10/18/2017

Revised: 10/18/2017

Revised: 10/18/2017

Revised: 10/18/2017

Revised: 10/18/2017

Revised: 10/18/2017

Revised: 10/18/2017

Revised: 10/18/2017

Revised: 10/18/2017

Revised: 10/18/2017

Revised: 10/18/2017

Revised: 10/18/2017

Revised: 10/18/2017

Revised: 10/18/2017

Revised: 10/18/2017

Revised: 10/18/2017

Revised: 10/18/2017

Revised: 10/18/2017

Revised: 10/18/2017

Revised: 10/18/2017

Revised: 10/18/2017

Revised: 10/18/2017

Revised: 10/18/2017

Revised: 10/18/2017

Revised: 10/18/2017

Revised: 10/18/2017

Revised: 10/18/2017

Revised: 10/18/2017

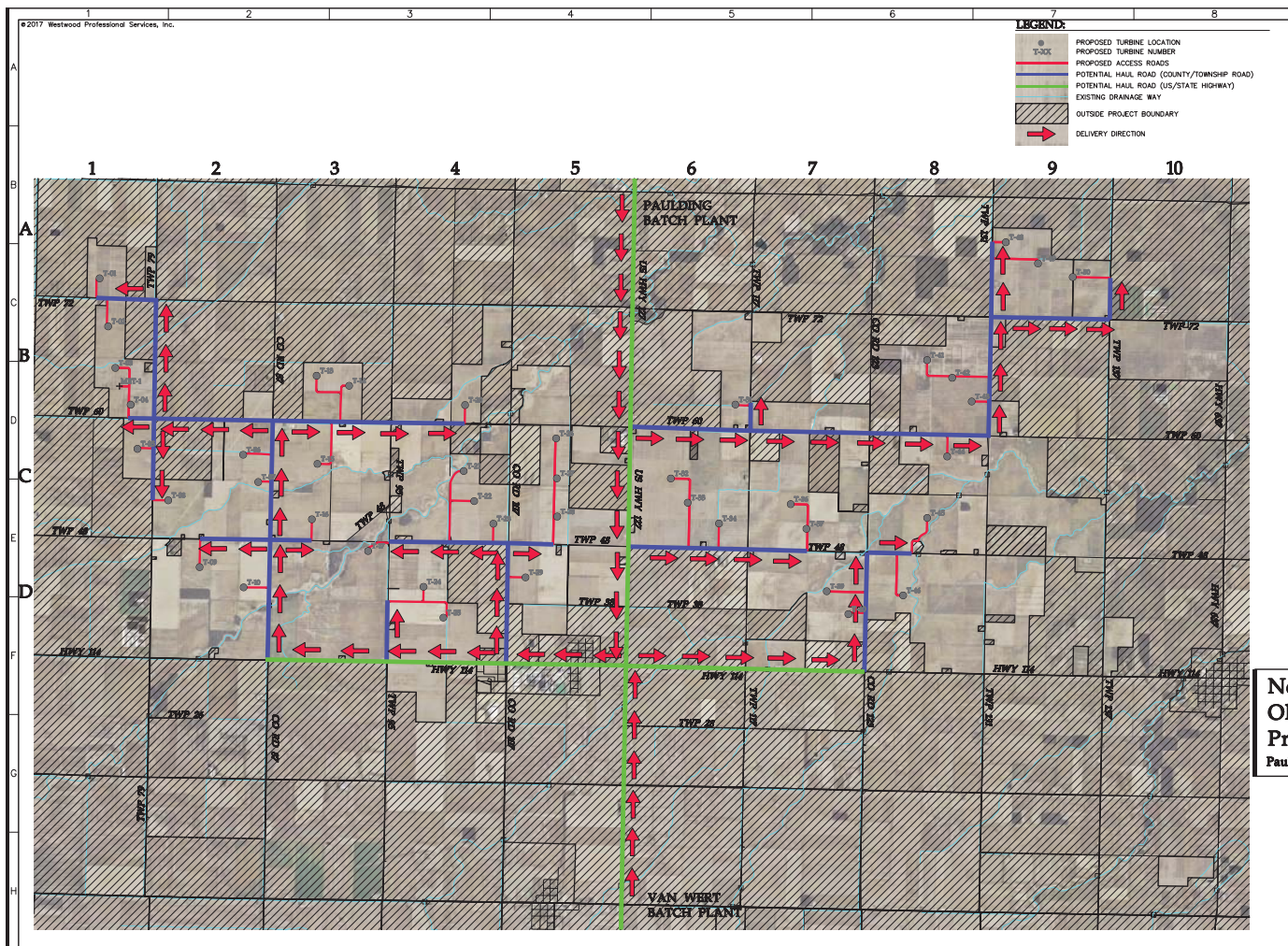
Revised: 10/18/2017

Revised: 10/18/2017









**Westwood**  
 2000 E. White Ave.  
 Chiles, OH 43006  
 Phone: 614.233.1000  
 Fax: 614.233.1001  
 Website: www.westwood.com

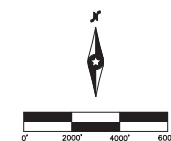


Design:	200
Check:	200
Draw:	200
As-Built Drawing:	
System:	
1. 200	200
A. 09/01/17	200
B. 09/01/17	200
C. 09/01/17	200
D. 09/01/17	200
E. 09/01/17	200
F. 09/01/17	200
G. 09/01/17	200
H. 09/01/17	200

Prepared for:

**WHITE**  
 2000 E. White Ave.  
 Chiles, OH 43006

White Wind Ohio, LLC  
 c/o Raymond Energy Group, LLC  
 9 Greenleaf Office Park, 2nd Floor  
 Greenleaf, CT 06039



# **Northwest Ohio Wind Project** Paulding, Ohio

**Concrete Haul Route  
Plan**

Issued For Construction  
 Army Updated: 09/18/2017  
 Date: 10/18/2017  
 Sheet: 33 of 34

0007186-0007101-Cons.dwg







**This foregoing document was electronically filed with the Public Utilities**

**Commission of Ohio Docketing Information System on**

**10/27/2017 2:08:06 PM**

**in**

**Case No(s). 13-0197-EL-BGN, 16-1687-EL-BGA, 17-1099-EL-BGA**

Summary: Notice of Update to September 1, 2017 Filing Regarding Compliance with  
Condition 6 – Drawings for Final Design Plan electronically filed by Mr. William V Vorys on  
behalf of Trishe Wind Ohio, LLC