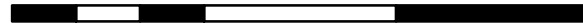


**Exhibit 2: Dowling-Midway 138 kV
Transmission Line
Reconductor Project**

Municipalities: Washington Twp.,
Providence Twp., Waterville Twp.,
City of Waterville, Middleton Twp.,
Webster Twp., Troy Twp., &
Village of Haskins
Counties: Henry, Lucas, & Wood
State: Ohio
USGS Quads: Bowling Green North,
Grand Rapids, Colton

0 1,000 2,000 4,000 6,000



Feet

1 inch = 2,000 feet

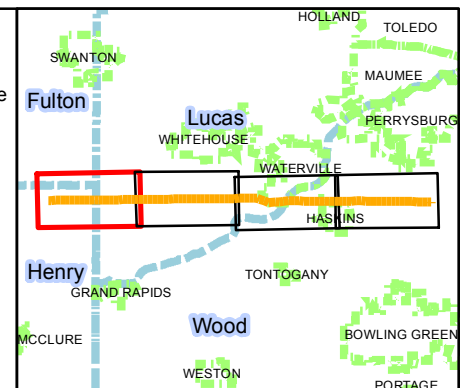


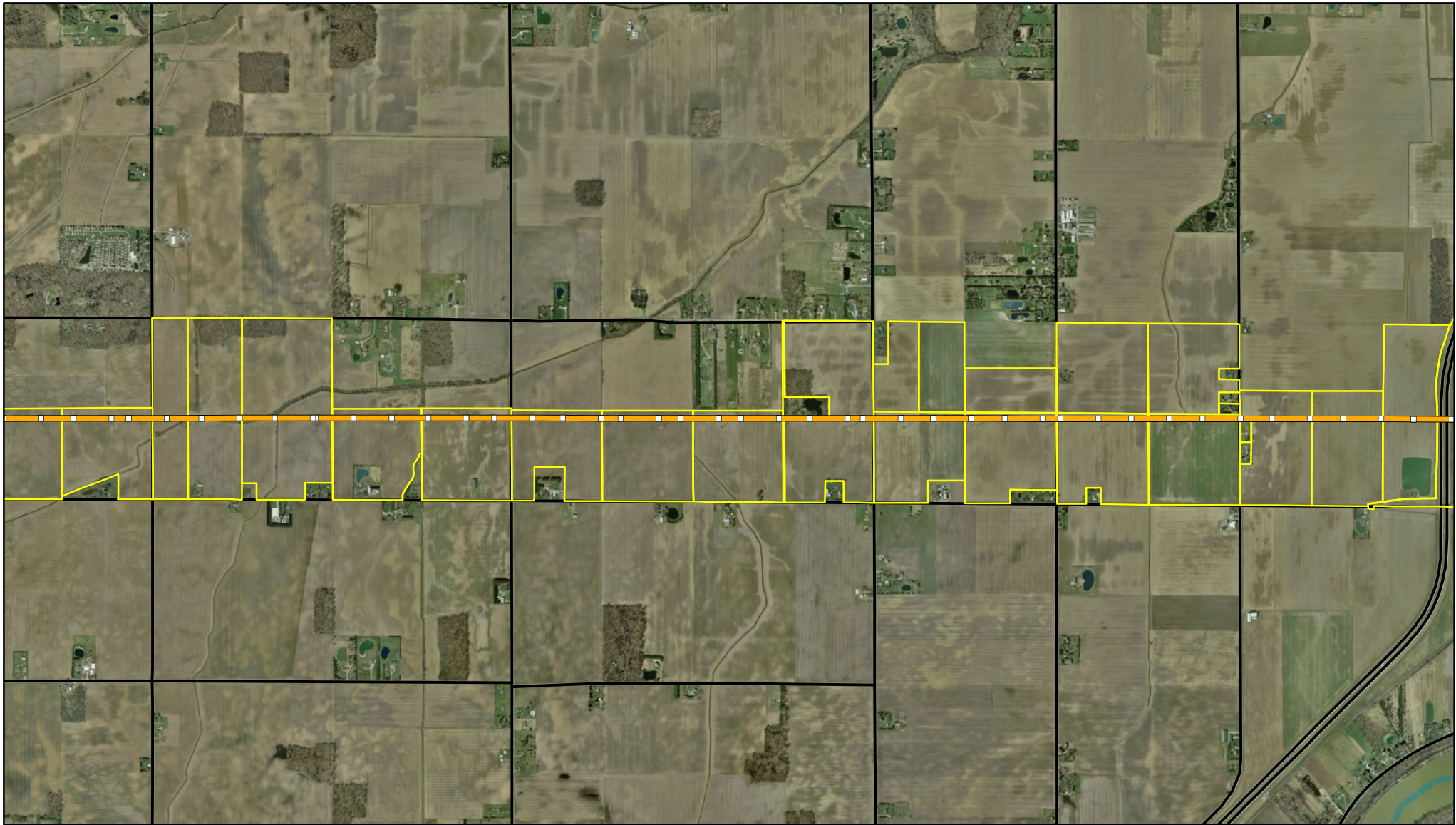
NAD 1983 StatePlane Ohio North
Projection: Lambert Conformal Conic
Linear Unit: US Foot

Source: Henry County Auditor's Office
Lucas County Auditor's Office
Wood County Auditor's Office
ESRI Imagery

Legend

- Dowling-Midway 138kV Transmission Line
- Parcel Boundary
- Street
- Municipality Boundary
- County Boundary

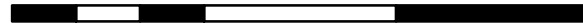




**Exhibit 2: Dowling-Midway 138 kV
Transmission Line
Reconductor Project**

Municipalities: Washington Twp.,
Providence Twp., Waterville Twp.,
City of Waterville, Middleton Twp.,
Webster Twp., Troy Twp., &
Village of Haskins
Counties: Henry, Lucas, & Wood
State: Ohio
USGS Quads: Bowling Green North,
Grand Rapids, Colton

0 1,000 2,000 4,000 6,000



Feet

1 inch = 2,000 feet



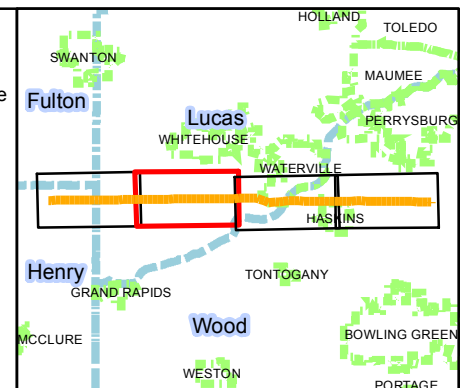
NAD 1983 StatePlane Ohio North
Projection: Lambert Conformal Conic
Linear Unit: US Foot

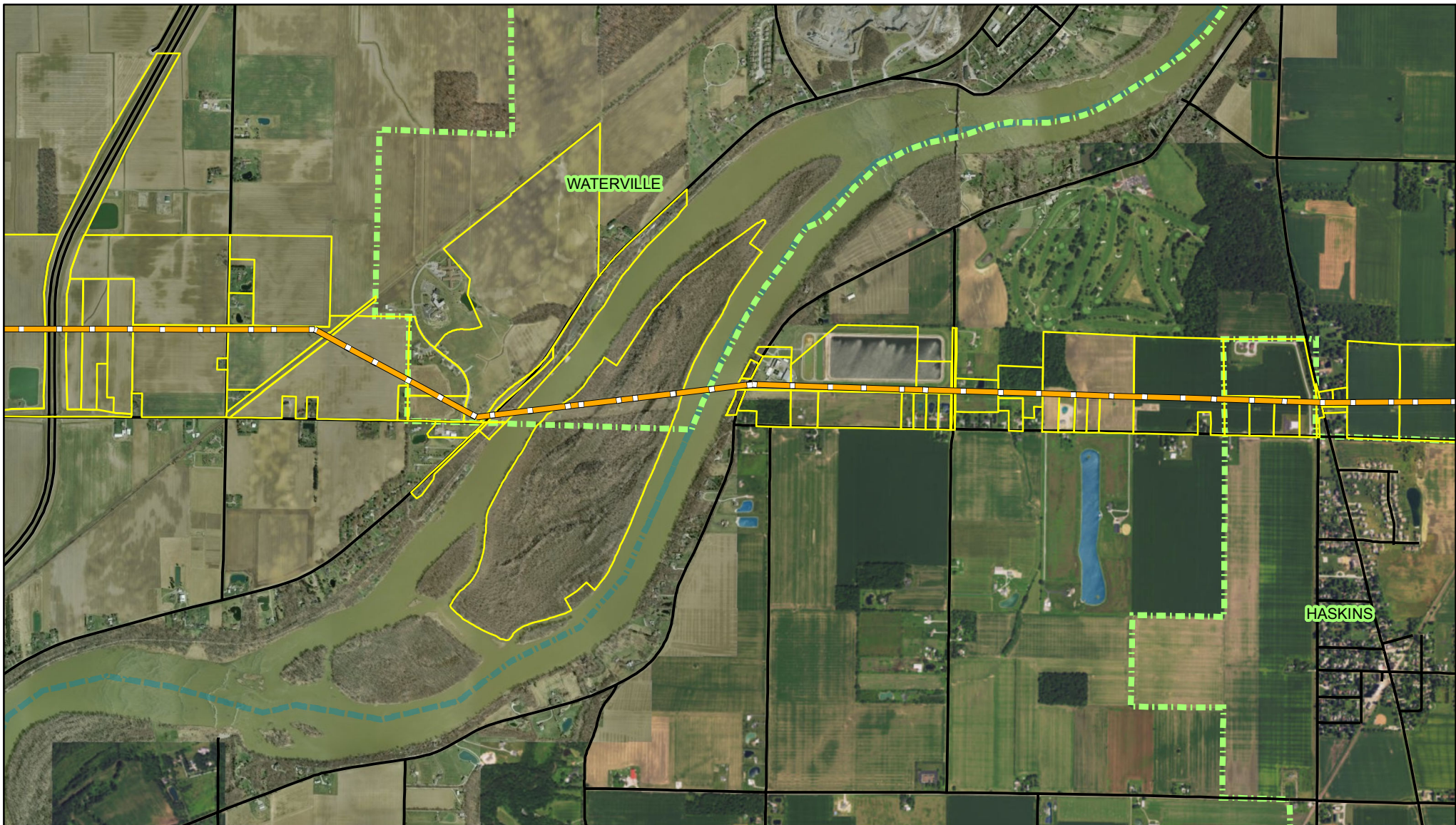
Source: Henry County Auditor's Office
Lucas County Auditor's Office
Wood County Auditor's Office
ESRI Imagery

Legend

- Dowling-Midway 138kV Transmission Line
- Parcel Boundary
- Street
- Municipality Boundary
- County Boundary

Page 2 of 4





**Exhibit 2: Dowling-Midway 138 kV
Transmission Line
Reconductor Project**

Municipalities: Washington Twp.,
Providence Twp., Waterville Twp.,
City of Waterville, Middleton Twp.,
Webster Twp., Troy Twp., &
Village of Haskins
Counties: Henry, Lucas, & Wood
State: Ohio
USGS Quads: Bowling Green North,
Grand Rapids, Colton

0 1,000 2,000 4,000 6,000

Feet

1 inch = 2,000 feet



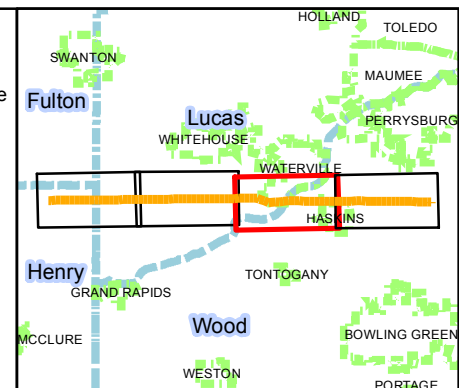
NAD 1983 StatePlane Ohio North
Projection: Lambert Conformal Conic
Linear Unit: US Foot

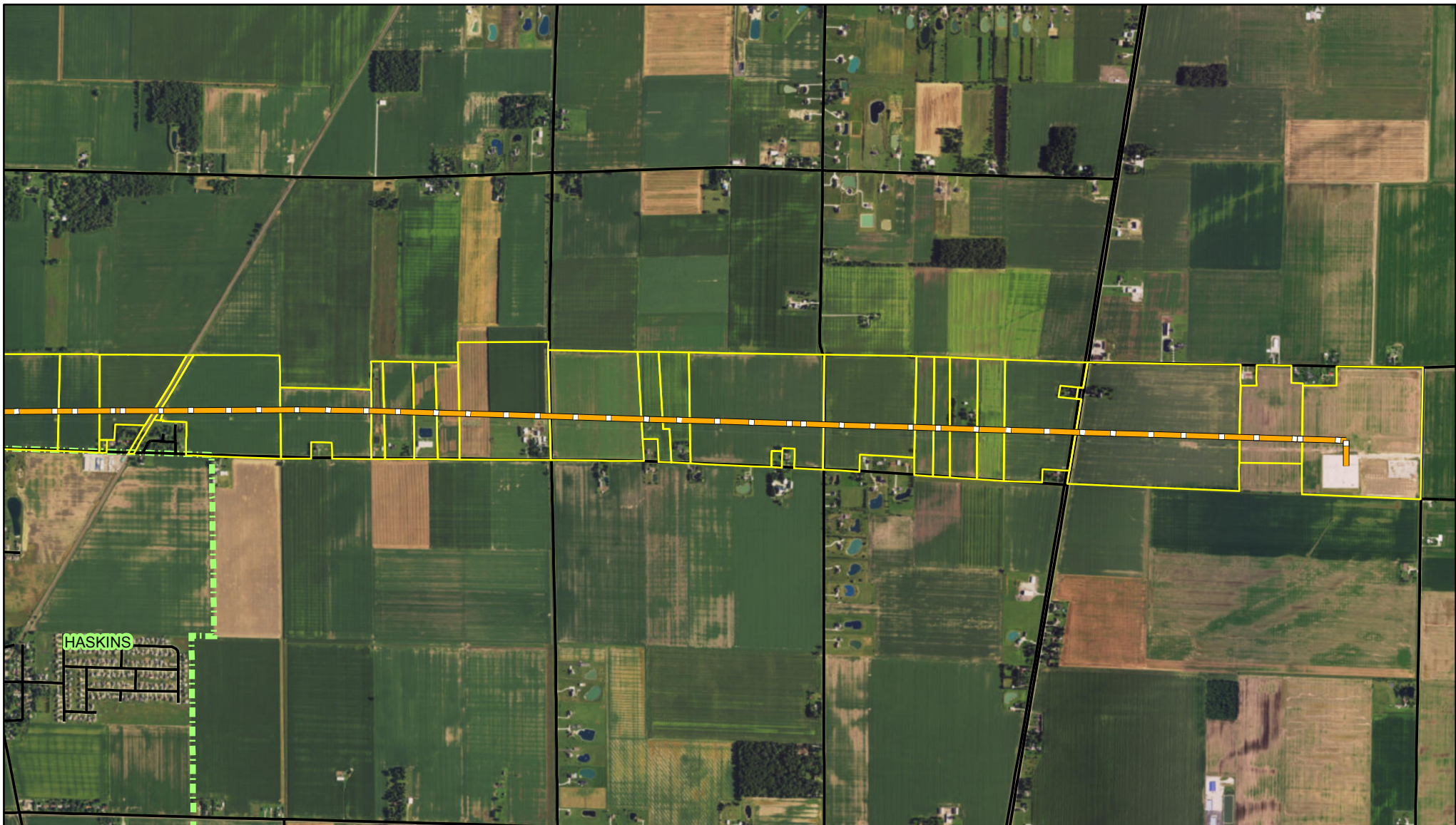
Source: Henry County Auditor's Office
Lucas County Auditor's Office
Wood County Auditor's Office
ESRI Imagery

Legend

- Dowling-Midway 138kV Transmission Line
- Parcel Boundary
- Street
- Municipality Boundary
- County Boundary

Page 3 of 4





**Exhibit 2: Dowling-Midway 138 kV
Transmission Line
Reconductor Project**

Municipalities: Washington Twp.,
Providence Twp., Waterville Twp.,
City of Waterville, Middleton Twp.,
Webster Twp., Troy Twp., &
Village of Haskins
Counties: Henry, Lucas, & Wood
State: Ohio
USGS Quads: Bowling Green North,
Grand Rapids, Colton

0 1,000 2,000 4,000 6,000

Feet

1 inch = 2,000 feet



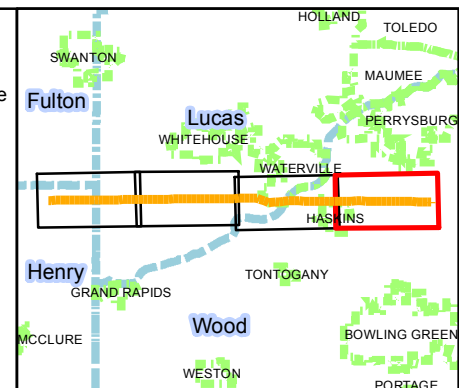
NAD 1983 StatePlane Ohio North
Projection: Lambert Conformal Conic
Linear Unit: US Foot

Source: Henry County Auditor's Office
Lucas County Auditor's Office
Wood County Auditor's Office
ESRI Imagery

Legend

- Dowling-Midway 138kV Transmission Line
- Parcel Boundary
- Street
- Municipality Boundary
- County Boundary

Page 4 of 4



This foregoing document was electronically filed with the Public Utilities

Commission of Ohio Docketing Information System on

7/21/2017 4:03:53 PM

in

Case No(s). 17-1566-EL-BLN

Summary: Application (Part 5) for the Dowling-Midway 138kV Transmission Line Reconductor Project filed by FirstEnergy, S. Humphrys electronically filed by Docketing Staff on behalf of Docketing