



COLUMBUS | CLEVELAND
CINCINNATI-DAYTON
MARIETTA

BRICKER & ECKLER LLP
100 South Third Street
Columbus, OH 43215-4291
MAIN: 614.227.2300
FAX: 614.227.2390

www.bricker.com
info@bricker.com

Sally W. Bloomfield
614.227.2368
sbloomfield@bricker.com

April 4, 2017

Via Electronic Filing

Ms. Barcy McNeal
Public Utilities Commission of Ohio
Administration/Docketing
180 East Broad Street, 11th Floor
Columbus, OH 43215-3793

**Re: Hog Creek Wind Farm LLC,
Case Nos. 09-277-EL-BGN and 10-654-EL-BGN**

Dear Ms. McNeal:

On March 22, 2010, the Ohio Power Siting Board ("OPSB") issued Hog Creek Wind Farm LLC ("Hog Creek") a Certificate of Environmental Compatibility and Public Need in Case No. 09-277-EL-BGN for Hog Creek I ("Hog Creek I Certificate"). On August 29, 2011, the OPSB issued a Certificate of Environmental Compatibility and Public Need in Case No. 10-654-EL-BGN for Hog Creek II ("Hog Creek II Certificate"). The orders in each of the cases established a set of conditions as part of the certificates.

Hog Creek II Certificate **Condition No. 49** requires that:

Hog Creek must meet all recommended and prescribed FAA and ODOT-OA requirements to construct an object that may affect navigable airspace. This includes submitting all final turbine locations for ODOT-OA and FAA review prior to construction, and the non-penetration of any FAA Part 77 surfaces.

On October 27, 2016 Hog Creek submitted documentation from the FAA showing its determination that no hazard exists with respect to the planned installation of turbines. Subsequently, Hog Creek requested the FAA for permission not to light 8 turbines, but to use paint only as being satisfactory to avoid hazards. Attached are copies of determinations by the FAA that paint would be appropriate for the eight turbines along with a map showing which turbines would be lit and which would not. Thus, this letter is to inform Staff that Hog Creek remains in compliance with Hog Creek II Certificate **Condition No. 49**, having received permission to use paint only on certain turbines.

If you have any questions please call at the number listed above.

Sincerely,

Sally W. Bloomfield

Attachments

cc: Andrew Conway (w/Attachments)
Jonathan Pawley (w/Attachments)



Mail Processing Center
Federal Aviation Administration
Southwest Regional Office
Obstruction Evaluation Group
10101 Hillwood Parkway
Fort Worth, TX 76177

Aeronautical Study No.
2016-WTE-3841-OE

Issued Date: 12/21/2016

Elizabeth King
Hog Creek Wind Project, LLC
11101 W 120th Ave.
Suite 400
Broomfield, CO 80021

**** MARKING & LIGHTING RECOMMENDATION ****

The Federal Aviation Administration has completed an evaluation of your request concerning:

Structure:	Wind Turbine T21
Location:	Dunkirk, OH
Latitude:	40-47-40.27N NAD 83
Longitude:	83-42-51.18W
Heights:	935 feet site elevation (SE) 499 feet above ground level (AGL) 1434 feet above mean sea level (AMSL)

Based on this evaluation, we have no objection to the change provided the structure is marked/lighted in accordance with FAA Advisory Circular 70/7460-1, L Change 1, Obstruction Marking and Lighting, white paint only - Chapters 12&13(Turbines).

Any failure or malfunction that lasts more than thirty (30) minutes and affects a top light or flashing obstruction light, regardless of its position, should be reported immediately to (877) 487-6867 so a Notice to Airmen (NOTAM) can be issued. As soon as the normal operation is restored, notify the same number.

So that aeronautical charts and records can be updated, it is required that FAA Form 7460-2, Notice of Actual Construction or Alteration, be e-filed when the new system is installed and operational.

Obstruction marking and lighting recommendations for wind turbine farms are based on the scheme for the entire project. ANY change to the height, location or number of turbines within this project will require a reanalysis of the marking and lighting recommendation for the entire project. In particular, the removal of previously planned or built turbines/turbine locations from the project will often result in a change in the marking/lighting recommendation for other turbines within the project. It is the proponent's responsibility to contact the FAA to discuss the process for developing a revised obstruction marking and lighting plan should this occur.

In order to ensure proper conspicuity of turbines at night during construction, all turbines should be lit with temporary lighting once they reach a height of 200 feet or greater until such time the permanent lighting configuration is turned on. As the height of the structure continues to increase, the temporary lighting should be relocated to the uppermost part of the structure. The temporary lighting may be turned off for periods when they would interfere with construction personnel. If practical, permanent obstruction lights should be installed

and operated at each level as construction progresses. An FAA Type L-810 steady red light fixture shall be used to light the structure during the construction phase. If power is not available, turbines shall be lit with self-contained, solar powered LED steady red light fixture that meets the photometric requirements of an FAA Type L-810 lighting system. The lights should be positioned to ensure that a pilot has an unobstructed view of at least one light at each level. The use of a NOTAM (D) to not light turbines within a project until the entire project has been completed is prohibited.

This evaluation concerns the effect of the marking/lighting changes on the safe and efficient use of navigable airspace by aircraft and does not relieve the sponsor of compliance responsibilities relating to any law, ordinance, or regulation of any Federal, State, or local government body.

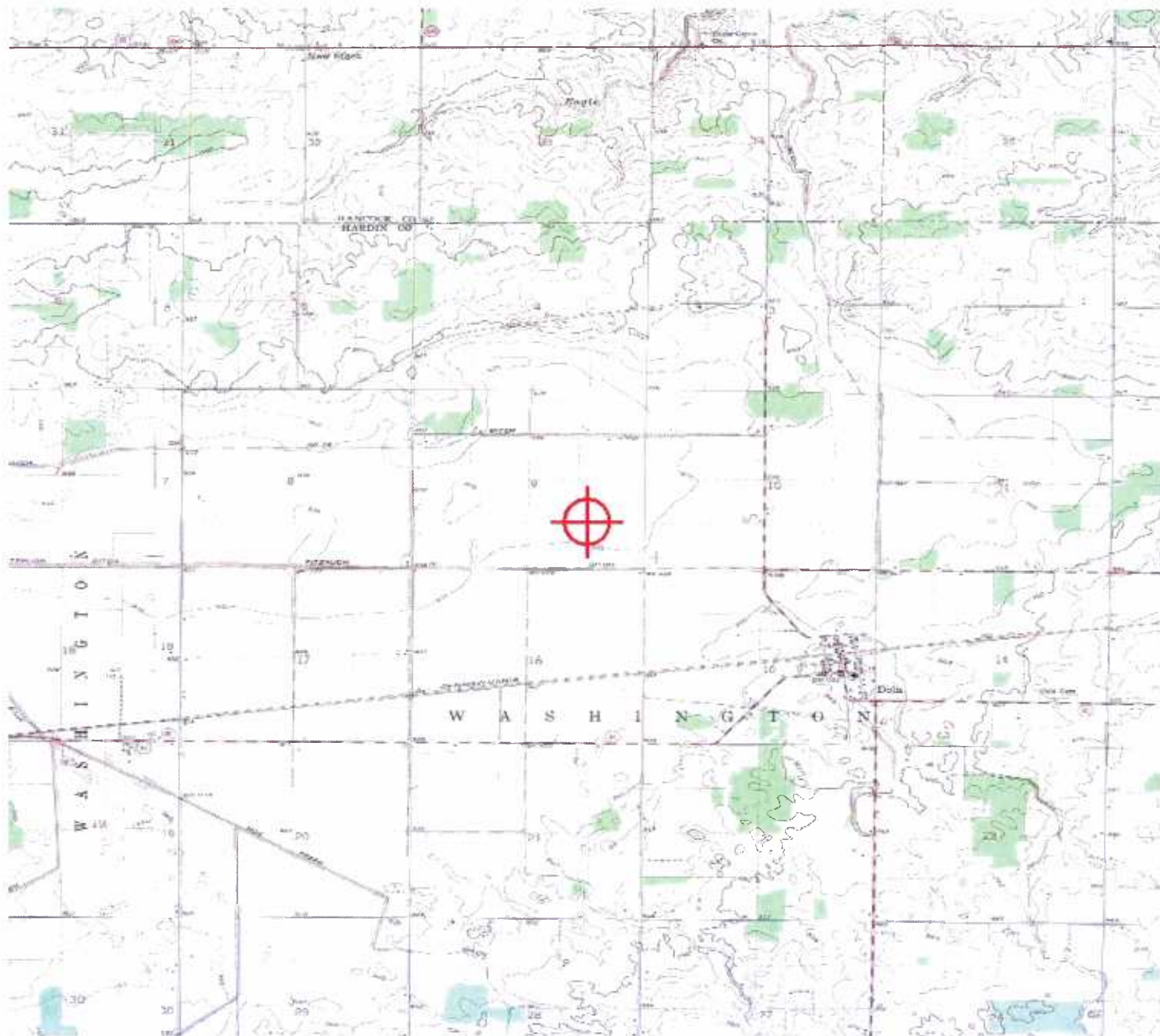
If we can be of further assistance, please contact our office at (202) 267-5235. On any future correspondence concerning this matter, please refer to Aeronautical Study Number 2016-WTE-3841-OE.

Signature Control No: 295877174-313167797

(MAL -WT)

Tracy Rosgen
Technician

Attachment(s)
Map(s)







Mail Processing Center
Federal Aviation Administration
Southwest Regional Office
Obstruction Evaluation Group
10101 Hillwood Parkway
Fort Worth, TX 76177

Aeronautical Study No.
2016-WTE-3830-OE

Issued Date: 12/21/2016

Elizabeth King
Hog Creek Wind Project, LLC
11101 W 120th Ave.
Suite 400
Broomfield, CO 80021

**** MARKING & LIGHTING RECOMMENDATION ****

The Federal Aviation Administration has completed an evaluation of your request concerning:

Structure:	Wind Turbine T9
Location:	Dunkirk, OH
Latitude:	40-46-13.58N NAD 83
Longitude:	83-43-16.36W
Heights:	938 feet site elevation (SE) 499 feet above ground level (AGL) 1437 feet above mean sea level (AMSL)

Based on this evaluation, we have no objection to the change provided the structure is marked/lighted in accordance with FAA Advisory Circular 70/7460-1, L Change 1, Obstruction Marking and Lighting, white paint only - Chapters 12&13(Turbines).

Any failure or malfunction that lasts more than thirty (30) minutes and affects a top light or flashing obstruction light, regardless of its position, should be reported immediately to (877) 487-6867 so a Notice to Airmen (NOTAM) can be issued. As soon as the normal operation is restored, notify the same number.

So that aeronautical charts and records can be updated, it is required that FAA Form 7460-2, Notice of Actual Construction or Alteration, be e-filed when the new system is installed and operational.

Obstruction marking and lighting recommendations for wind turbine farms are based on the scheme for the entire project. ANY change to the height, location or number of turbines within this project will require a reanalysis of the marking and lighting recommendation for the entire project. In particular, the removal of previously planned or built turbines/turbine locations from the project will often result in a change in the marking/lighting recommendation for other turbines within the project. It is the proponent's responsibility to contact the FAA to discuss the process for developing a revised obstruction marking and lighting plan should this occur.

In order to ensure proper conspicuity of turbines at night during construction, all turbines should be lit with temporary lighting once they reach a height of 200 feet or greater until such time the permanent lighting configuration is turned on. As the height of the structure continues to increase, the temporary lighting should be relocated to the uppermost part of the structure. The temporary lighting may be turned off for periods when they would interfere with construction personnel. If practical, permanent obstruction lights should be installed

and operated at each level as construction progresses. An FAA Type L-810 steady red light fixture shall be used to light the structure during the construction phase. If power is not available, turbines shall be lit with self-contained, solar powered LED steady red light fixture that meets the photometric requirements of an FAA Type L-810 lighting system. The lights should be positioned to ensure that a pilot has an unobstructed view of at least one light at each level. The use of a NOTAM (D) to not light turbines within a project until the entire project has been completed is prohibited.

This evaluation concerns the effect of the marking/lighting changes on the safe and efficient use of navigable airspace by aircraft and does not relieve the sponsor of compliance responsibilities relating to any law, ordinance, or regulation of any Federal, State, or local government body.

If we can be of further assistance, please contact our office at (202) 267-5235. On any future correspondence concerning this matter, please refer to Aeronautical Study Number 2016-WTE-3830-OE.

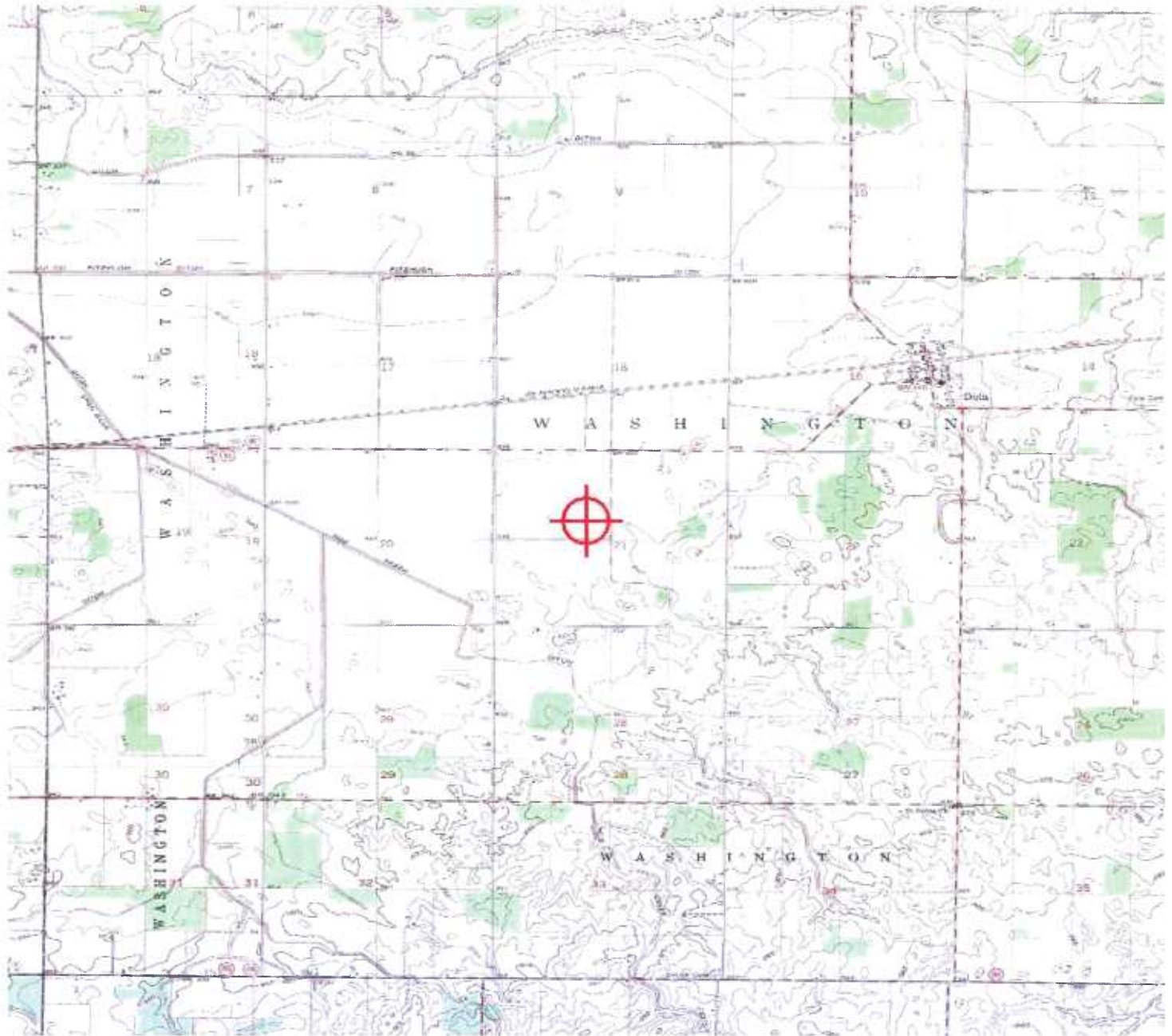
Signature Control No: 295877160-313167794

(MAL -WT)

Tracy Rosgen
Technician

Attachment(s)

Map(s)







Mail Processing Center
Federal Aviation Administration
Southwest Regional Office
Obstruction Evaluation Group
10101 Hillwood Parkway
Fort Worth, TX 76177

Aeronautical Study No.
2016-WTE-3839-OE

Issued Date: 12/21/2016

Elizabeth King
Hog Creek Wind Project, LLC
11101 W 120th Ave.
Suite 400
Broomfield, CO 80021

**** MARKING & LIGHTING RECOMMENDATION ****

The Federal Aviation Administration has completed an evaluation of your request concerning:

Structure:	Wind Turbine T19
Location:	Dunkirk, OH
Latitude:	40-47-42.61N NAD 83
Longitude:	83-43-19.70W
Heights:	935 feet site elevation (SE) 499 feet above ground level (AGL) 1434 feet above mean sea level (AMSL)

Based on this evaluation, we have no objection to the change provided the structure is marked/lighted in accordance with FAA Advisory Circular 70/7460-1, L Change 1 , Obstruction Marking and Lighting, white paint only - Chapters 12&13(Turbines).

Any failure or malfunction that lasts more than thirty (30) minutes and affects a top light or flashing obstruction light, regardless of its position, should be reported immediately to (877) 487-6867 so a Notice to Airmen (NOTAM) can be issued. As soon as the normal operation is restored, notify the same number.

So that aeronautical charts and records can be updated, it is required that FAA Form 7460-2, Notice of Actual Construction or Alteration, be e-filed when the new system is installed and operational.

Obstruction marking and lighting recommendations for wind turbine farms are based on the scheme for the entire project. ANY change to the height, location or number of turbines within this project will require a reanalysis of the marking and lighting recommendation for the entire project. In particular, the removal of previously planned or built turbines/turbine locations from the project will often result in a change in the marking/lighting recommendation for other turbines within the project. It is the proponent's responsibility to contact the FAA to discuss the process for developing a revised obstruction marking and lighting plan should this occur.

In order to ensure proper conspicuity of turbines at night during construction, all turbines should be lit with temporary lighting once they reach a height of 200 feet or greater until such time the permanent lighting configuration is turned on. As the height of the structure continues to increase, the temporary lighting should be relocated to the uppermost part of the structure. The temporary lighting may be turned off for periods when they would interfere with construction personnel. If practical, permanent obstruction lights should be installed

and operated at each level as construction progresses. An FAA Type L-810 steady red light fixture shall be used to light the structure during the construction phase. If power is not available, turbines shall be lit with self-contained, solar powered LED steady red light fixture that meets the photometric requirements of an FAA Type L-810 lighting system. The lights should be positioned to ensure that a pilot has an unobstructed view of at least one light at each level. The use of a NOTAM (D) to not light turbines within a project until the entire project has been completed is prohibited.

This evaluation concerns the effect of the marking/lighting changes on the safe and efficient use of navigable airspace by aircraft and does not relieve the sponsor of compliance responsibilities relating to any law, ordinance, or regulation of any Federal, State, or local government body.

If we can be of further assistance, please contact our office at (202) 267-5235. On any future correspondence concerning this matter, please refer to Aeronautical Study Number 2016-WTE-3839-OE.

Signature Control No: 295877169-313167801

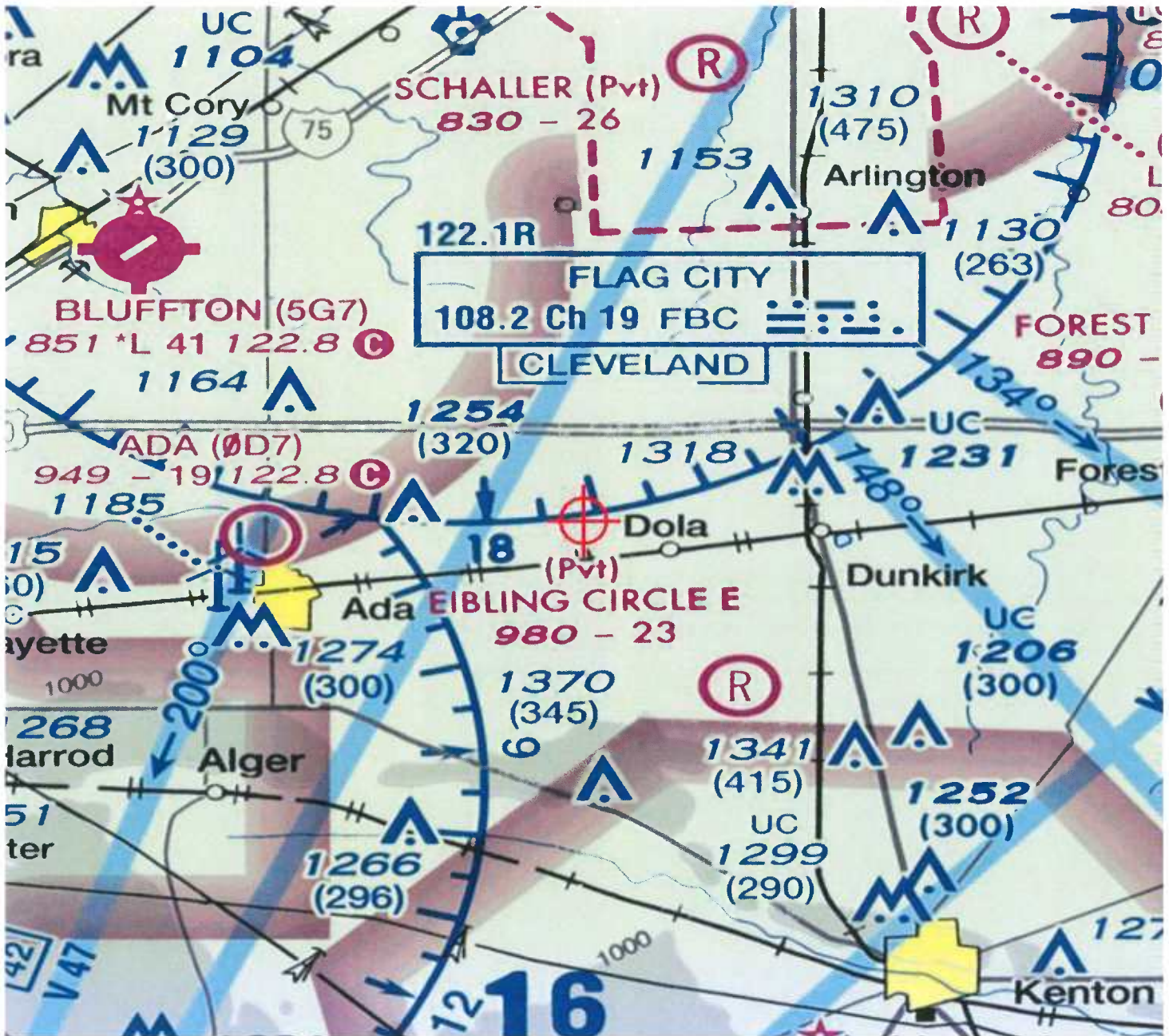
(MAL -WT)

Tracy Rosgen
Technician

Attachment(s)

Map(s)







Mail Processing Center
Federal Aviation Administration
Southwest Regional Office
Obstruction Evaluation Group
10101 Hillwood Parkway
Fort Worth, TX 76177

Aeronautical Study No.
2016-WTE-3827-OE

Issued Date: 12/21/2016

Elizabeth King
Hog Creek Wind Project, LLC
11101 W 120th Ave.
Suite 400
Broomfield, CO 80021

**** MARKING & LIGHTING RECOMMENDATION ****

The Federal Aviation Administration has completed an evaluation of your request concerning:

Structure:	Wind Turbine T6
Location:	Dunkirk, OH
Latitude:	40-46-13.30N NAD 83
Longitude:	83-44-07.95W
Heights:	937 feet site elevation (SE) 499 feet above ground level (AGL) 1436 feet above mean sea level (AMSL)

Based on this evaluation, we have no objection to the change provided the structure is marked/lighted in accordance with FAA Advisory Circular 70/7460-1, L Change 1, Obstruction Marking and Lighting, white paint only - Chapters 12&13(Turbines).

Any failure or malfunction that lasts more than thirty (30) minutes and affects a top light or flashing obstruction light, regardless of its position, should be reported immediately to (877) 487-6867 so a Notice to Airmen (NOTAM) can be issued. As soon as the normal operation is restored, notify the same number.

So that aeronautical charts and records can be updated, it is required that FAA Form 7460-2, Notice of Actual Construction or Alteration, be e-filed when the new system is installed and operational.

Obstruction marking and lighting recommendations for wind turbine farms are based on the scheme for the entire project. ANY change to the height, location or number of turbines within this project will require a reanalysis of the marking and lighting recommendation for the entire project. In particular, the removal of previously planned or built turbines/turbine locations from the project will often result in a change in the marking/lighting recommendation for other turbines within the project. It is the proponent's responsibility to contact the FAA to discuss the process for developing a revised obstruction marking and lighting plan should this occur.

In order to ensure proper conspicuity of turbines at night during construction, all turbines should be lit with temporary lighting once they reach a height of 200 feet or greater until such time the permanent lighting configuration is turned on. As the height of the structure continues to increase, the temporary lighting should be relocated to the uppermost part of the structure. The temporary lighting may be turned off for periods when they would interfere with construction personnel. If practical, permanent obstruction lights should be installed

and operated at each level as construction progresses. An FAA Type L-810 steady red light fixture shall be used to light the structure during the construction phase. If power is not available, turbines shall be lit with self-contained, solar powered LED steady red light fixture that meets the photometric requirements of an FAA Type L-810 lighting system. The lights should be positioned to ensure that a pilot has an unobstructed view of at least one light at each level. The use of a NOTAM (D) to not light turbines within a project until the entire project has been completed is prohibited.

This evaluation concerns the effect of the marking/lighting changes on the safe and efficient use of navigable airspace by aircraft and does not relieve the sponsor of compliance responsibilities relating to any law, ordinance, or regulation of any Federal, State, or local government body.

If we can be of further assistance, please contact our office at (202) 267-5235. On any future correspondence concerning this matter, please refer to Aeronautical Study Number 2016-WTE-3827-OE.

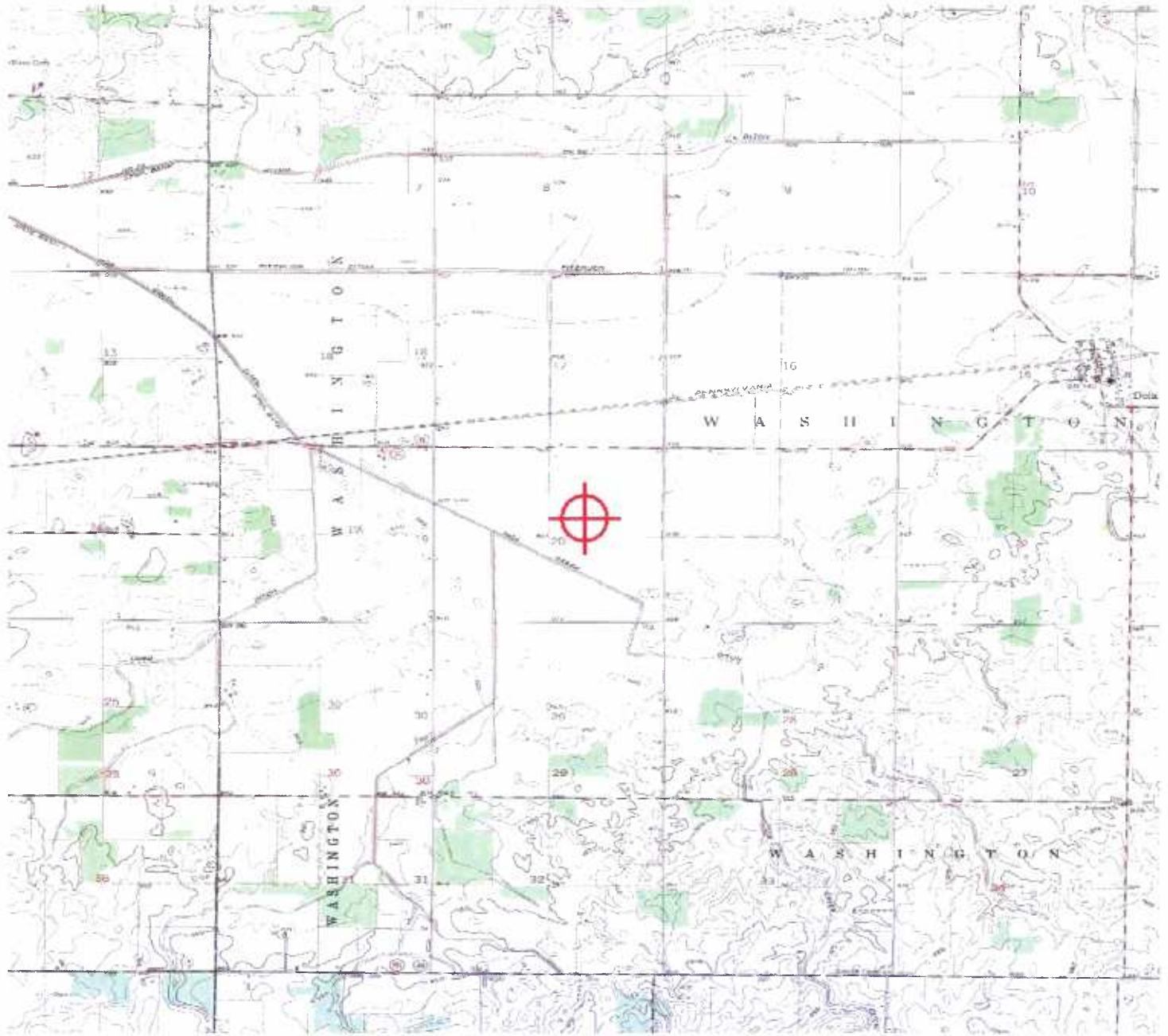
Signature Control No: 295877157-313167799

(MAL -WT)

Tracy Rosgen
Technician

Attachment(s)

Map(s)







Mail Processing Center
Federal Aviation Administration
Southwest Regional Office
Obstruction Evaluation Group
10101 Hillwood Parkway
Fort Worth, TX 76177

Aeronautical Study No.
2016-WTE-3836-OE

Issued Date: 12/21/2016

Elizabeth King
Hog Creek Wind Project, LLC
11101 W 120th Ave.
Suite 400
Broomfield, CO 80021

**** MARKING & LIGHTING RECOMMENDATION ****

The Federal Aviation Administration has completed an evaluation of your request concerning:

Structure:	Wind Turbine T15
Location:	Dunkirk, OH
Latitude:	40-47-45.87N NAD 83
Longitude:	83-44-14.96W
Heights:	935 feet site elevation (SE) 499 feet above ground level (AGL) 1434 feet above mean sea level (AMSL)

Based on this evaluation, we have no objection to the change provided the structure is marked/lighted in accordance with FAA Advisory Circular 70/7460-1, L Change 1, Obstruction Marking and Lighting, white paint only - Chapters 12&13(Turbines).

Any failure or malfunction that lasts more than thirty (30) minutes and affects a top light or flashing obstruction light, regardless of its position, should be reported immediately to (877) 487-6867 so a Notice to Airmen (NOTAM) can be issued. As soon as the normal operation is restored, notify the same number.

So that aeronautical charts and records can be updated, it is required that FAA Form 7460-2, Notice of Actual Construction or Alteration, be e-filed when the new system is installed and operational.

Obstruction marking and lighting recommendations for wind turbine farms are based on the scheme for the entire project. ANY change to the height, location or number of turbines within this project will require a reanalysis of the marking and lighting recommendation for the entire project. In particular, the removal of previously planned or built turbines/turbine locations from the project will often result in a change in the marking/lighting recommendation for other turbines within the project. It is the proponent's responsibility to contact the FAA to discuss the process for developing a revised obstruction marking and lighting plan should this occur.

In order to ensure proper conspicuity of turbines at night during construction, all turbines should be lit with temporary lighting once they reach a height of 200 feet or greater until such time the permanent lighting configuration is turned on. As the height of the structure continues to increase, the temporary lighting should be relocated to the uppermost part of the structure. The temporary lighting may be turned off for periods when they would interfere with construction personnel. If practical, permanent obstruction lights should be installed

and operated at each level as construction progresses. An FAA Type L-810 steady red light fixture shall be used to light the structure during the construction phase. If power is not available, turbines shall be lit with self-contained, solar powered LED steady red light fixture that meets the photometric requirements of an FAA Type L-810 lighting system. The lights should be positioned to ensure that a pilot has an unobstructed view of at least one light at each level. The use of a NOTAM (D) to not light turbines within a project until the entire project has been completed is prohibited.

This evaluation concerns the effect of the marking/lighting changes on the safe and efficient use of navigable airspace by aircraft and does not relieve the sponsor of compliance responsibilities relating to any law, ordinance, or regulation of any Federal, State, or local government body.

If we can be of further assistance, please contact our office at (202) 267-5235. On any future correspondence concerning this matter, please refer to Aeronautical Study Number 2016-WTE-3836-OE.

Signature Control No: 295877166-313167795

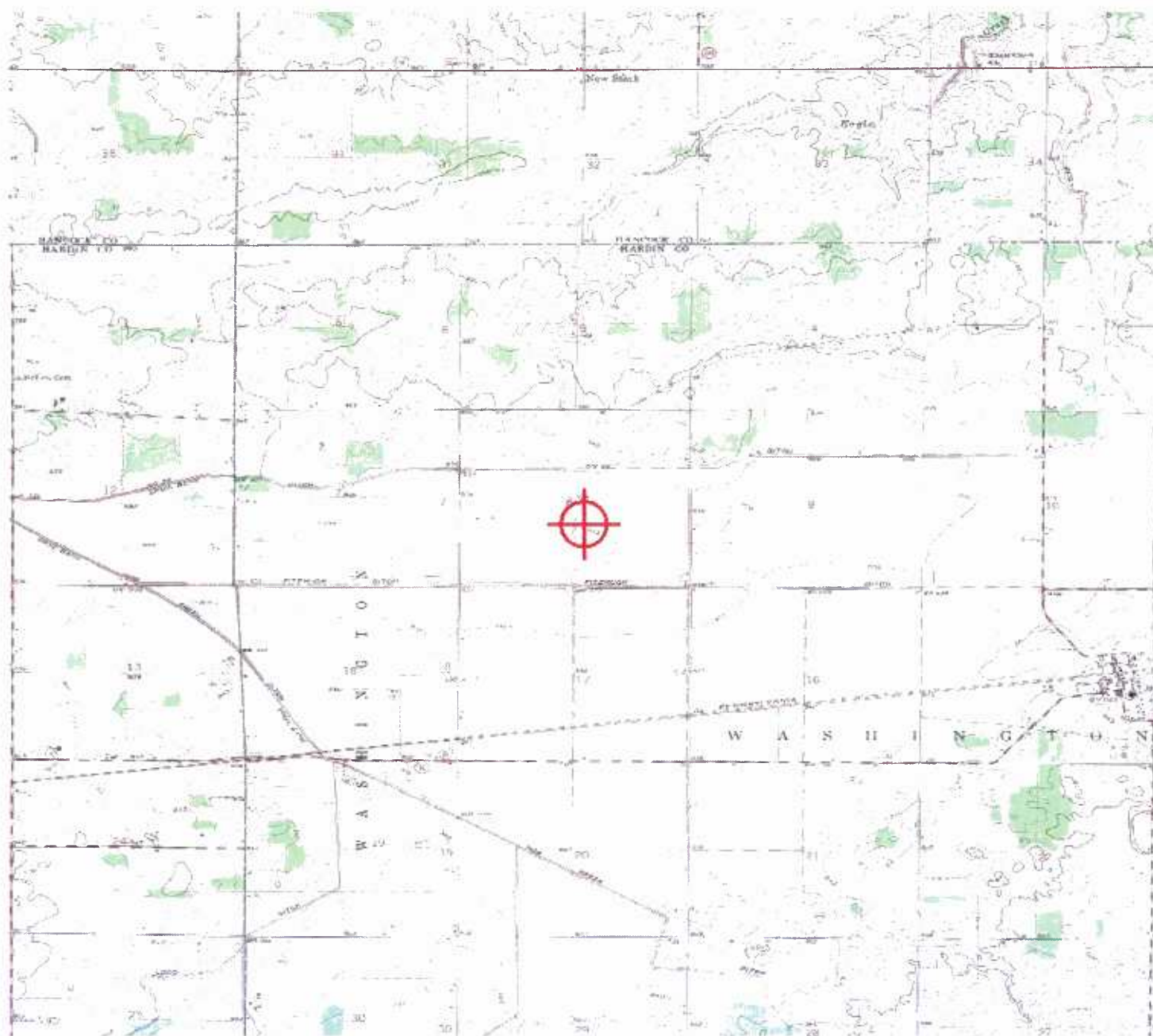
(MAL -WT)

Tracy Rosgen
Technician

Attachment(s)

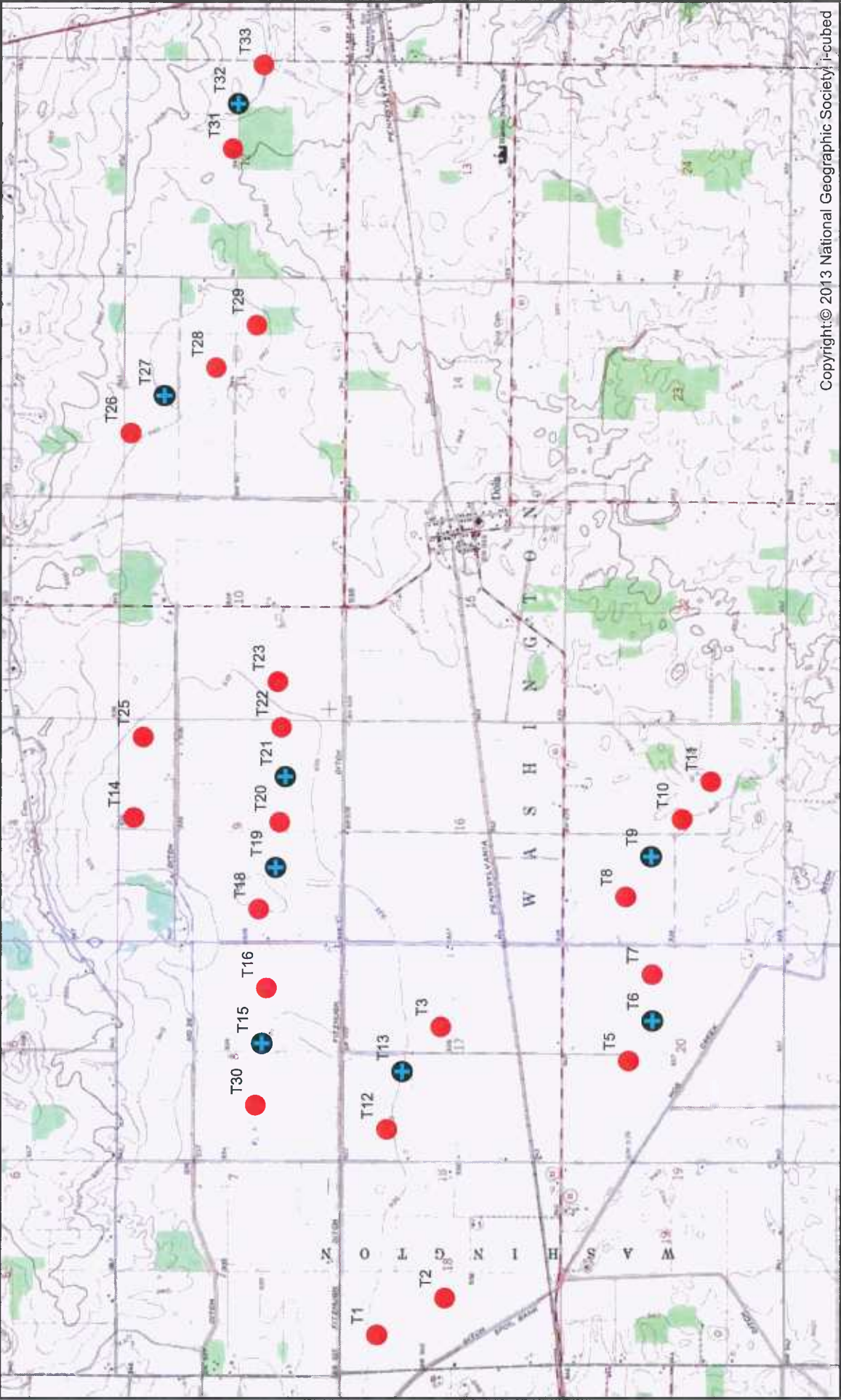
Map(s)

TOPO Map for ASN 2016-WTE-3836-OE





Hog Creek Lighted Turbine Layout





Copyright © 2013 National Geographic Society | i-cubed

Renewable Energy Systems

11101 W. 120th Ave., Suite 400 Broomfield, CO 80021
Phone: (303) 429-4200 Fax: (303) 429-4299

COORDINATE SYSTEM: WGS84
LAYOUT NO.: PUSAhcw043 DRAWING NO.: 23049D2206-01
DRAWN BY: EK DATE: 26/01/17
APPROVED BY: RT DATE: 26/1/17



- Legend**
-  Turbines
 -  Lighted Turbines



This drawing is the property of RES America Developments Inc. and no reproduction may be made in whole or in part without permission.



Mail Processing Center
Federal Aviation Administration
Southwest Regional Office
Obstruction Evaluation Group
10101 Hillwood Parkway
Fort Worth, TX 76177

Aeronautical Study No.
2016-WTE-3846-OE

Issued Date: 12/21/2016

Elizabeth King
Hog Creek Wind Project, LLC
11101 W 120th Ave.
Suite 400
Broomfield, CO 80021

**** MARKING & LIGHTING RECOMMENDATION ****

The Federal Aviation Administration has completed an evaluation of your request concerning:

Structure:	Wind Turbine T27
Location:	Dunkirk, OH
Latitude:	40-48-09.07N NAD 83
Longitude:	83-40-51.43W
Heights:	940 feet site elevation (SE) 499 feet above ground level (AGL) 1439 feet above mean sea level (AMSL)

Based on this evaluation, we have no objection to the change provided the structure is marked/lighted in accordance with FAA Advisory Circular 70/7460-1, L Change 1, Obstruction Marking and Lighting, white paint only - Chapters 12&13(Turbines).

Any failure or malfunction that lasts more than thirty (30) minutes and affects a top light or flashing obstruction light, regardless of its position, should be reported immediately to (877) 487-6867 so a Notice to Airmen (NOTAM) can be issued. As soon as the normal operation is restored, notify the same number.

So that aeronautical charts and records can be updated, it is required that FAA Form 7460-2, Notice of Actual Construction or Alteration, be e-filed when the new system is installed and operational.

Obstruction marking and lighting recommendations for wind turbine farms are based on the scheme for the entire project. ANY change to the height, location or number of turbines within this project will require a reanalysis of the marking and lighting recommendation for the entire project. In particular, the removal of previously planned or built turbines/turbine locations from the project will often result in a change in the marking/lighting recommendation for other turbines within the project. It is the proponent's responsibility to contact the FAA to discuss the process for developing a revised obstruction marking and lighting plan should this occur.

In order to ensure proper conspicuity of turbines at night during construction, all turbines should be lit with temporary lighting once they reach a height of 200 feet or greater until such time the permanent lighting configuration is turned on. As the height of the structure continues to increase, the temporary lighting should be relocated to the uppermost part of the structure. The temporary lighting may be turned off for periods when they would interfere with construction personnel. If practical, permanent obstruction lights should be installed

and operated at each level as construction progresses. An FAA Type L-810 steady red light fixture shall be used to light the structure during the construction phase. If power is not available, turbines shall be lit with self-contained, solar powered LED steady red light fixture that meets the photometric requirements of an FAA Type L-810 lighting system. The lights should be positioned to ensure that a pilot has an unobstructed view of at least one light at each level. The use of a NOTAM (D) to not light turbines within a project until the entire project has been completed is prohibited.

This evaluation concerns the effect of the marking/lighting changes on the safe and efficient use of navigable airspace by aircraft and does not relieve the sponsor of compliance responsibilities relating to any law, ordinance, or regulation of any Federal, State, or local government body.

If we can be of further assistance, please contact our office at (202) 267-5235. On any future correspondence concerning this matter, please refer to Aeronautical Study Number 2016-WTE-3846-OE.

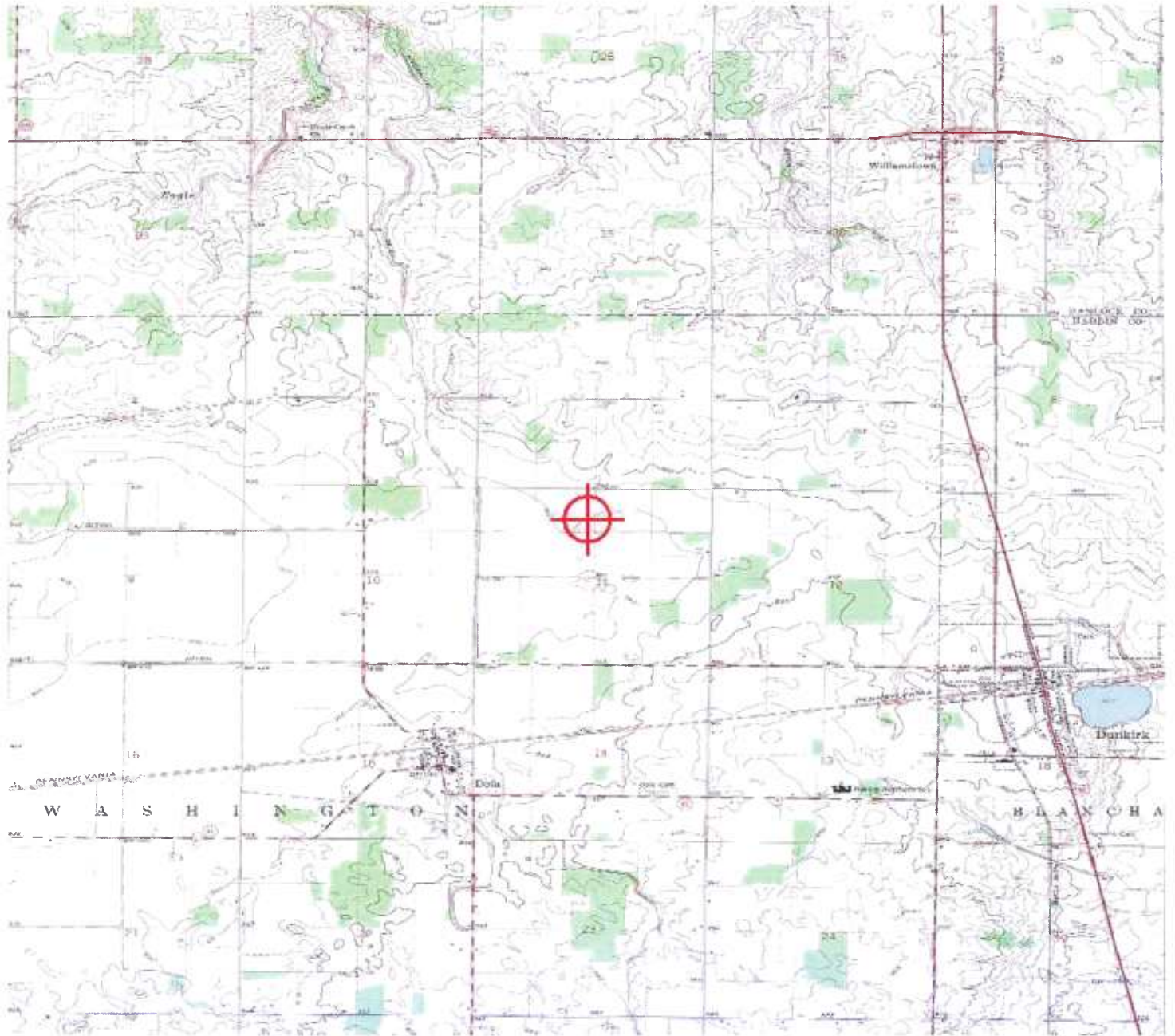
Signature Control No: 295877183-313167798

(MAL -WT)

Tracy Rosgen
Technician

Attachment(s)

Map(s)







Mail Processing Center
Federal Aviation Administration
Southwest Regional Office
Obstruction Evaluation Group
10101 Hillwood Parkway
Fort Worth, TX 76177

Aeronautical Study No.
2016-WTE-3834-OE

Issued Date: 12/21/2016

Elizabeth King
Hog Creek Wind Project, LLC
11101 W 120th Ave.
Suite 400
Broomfield, CO 80021

**** MARKING & LIGHTING RECOMMENDATION ****

The Federal Aviation Administration has completed an evaluation of your request concerning:

Structure:	Wind Turbine T13
Location:	Dunkirk, OH
Latitude:	40-47-12.85N NAD 83
Longitude:	83-44-23.79W
Heights:	935 feet site elevation (SE) 499 feet above ground level (AGL) 1434 feet above mean sea level (AMSL)

Based on this evaluation, we have no objection to the change provided the structure is marked/lighted in accordance with FAA Advisory Circular 70/7460-1, L Change 1, Obstruction Marking and Lighting, white paint only - Chapters 12&13(Turbines).

Any failure or malfunction that lasts more than thirty (30) minutes and affects a top light or flashing obstruction light, regardless of its position, should be reported immediately to (877) 487-6867 so a Notice to Airmen (NOTAM) can be issued. As soon as the normal operation is restored, notify the same number.

So that aeronautical charts and records can be updated, it is required that FAA Form 7460-2, Notice of Actual Construction or Alteration, be e-filed when the new system is installed and operational.

Obstruction marking and lighting recommendations for wind turbine farms are based on the scheme for the entire project. ANY change to the height, location or number of turbines within this project will require a reanalysis of the marking and lighting recommendation for the entire project. In particular, the removal of previously planned or built turbines/turbine locations from the project will often result in a change in the marking/lighting recommendation for other turbines within the project. It is the proponent's responsibility to contact the FAA to discuss the process for developing a revised obstruction marking and lighting plan should this occur.

In order to ensure proper conspicuity of turbines at night during construction, all turbines should be lit with temporary lighting once they reach a height of 200 feet or greater until such time the permanent lighting configuration is turned on. As the height of the structure continues to increase, the temporary lighting should be relocated to the uppermost part of the structure. The temporary lighting may be turned off for periods when they would interfere with construction personnel. If practical, permanent obstruction lights should be installed

and operated at each level as construction progresses. An FAA Type L-810 steady red light fixture shall be used to light the structure during the construction phase. If power is not available, turbines shall be lit with self-contained, solar powered LED steady red light fixture that meets the photometric requirements of an FAA Type L-810 lighting system. The lights should be positioned to ensure that a pilot has an unobstructed view of at least one light at each level. The use of a NOTAM (D) to not light turbines within a project until the entire project has been completed is prohibited.

This evaluation concerns the effect of the marking/lighting changes on the safe and efficient use of navigable airspace by aircraft and does not relieve the sponsor of compliance responsibilities relating to any law, ordinance, or regulation of any Federal, State, or local government body.

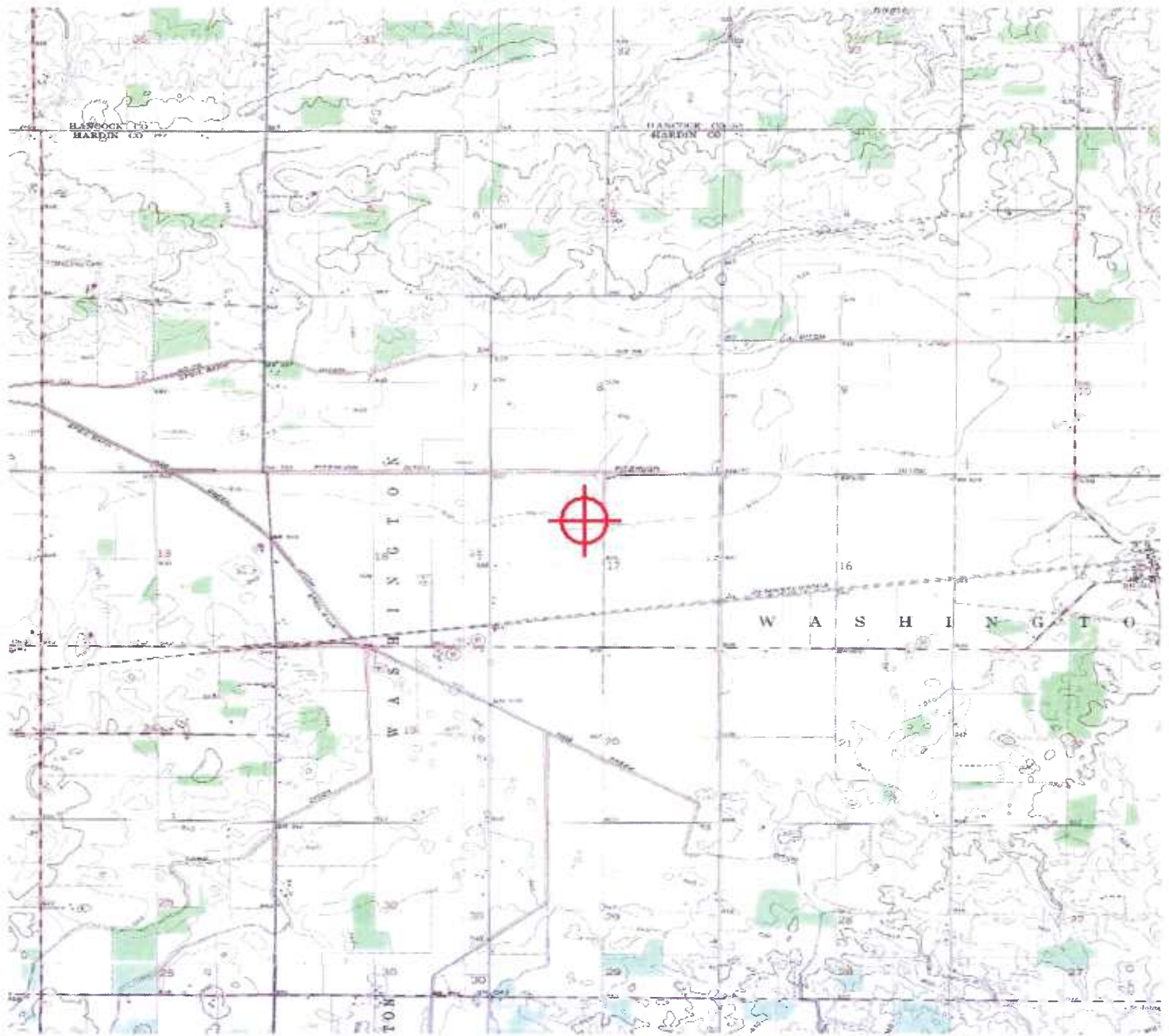
If we can be of further assistance, please contact our office at (202) 267-5235. On any future correspondence concerning this matter, please refer to Aeronautical Study Number 2016-WTE-3834-OE.

Signature Control No: 295877164-313167796

(MAL -WT)

Tracy Rosgen
Technician

Attachment(s)
Map(s)







Mail Processing Center
Federal Aviation Administration
Southwest Regional Office
Obstruction Evaluation Group
10101 Hillwood Parkway
Fort Worth, TX 76177

Aeronautical Study No.
2016-WTE-3851-OE

Issued Date: 12/21/2016

Elizabeth King
Hog Creek Wind Project, LLC
11101 W 120th Ave.
Suite 400
Broomfield, CO 80021

**** MARKING & LIGHTING RECOMMENDATION ****

The Federal Aviation Administration has completed an evaluation of your request concerning:

Structure:	Wind Turbine T32
Location:	Dunkirk, OH
Latitude:	40-47-51.49N NAD 83
Longitude:	83-39-19.58W
Heights:	945 feet site elevation (SE) 499 feet above ground level (AGL) 1444 feet above mean sea level (AMSL)

Based on this evaluation, we have no objection to the change provided the structure is marked/lighted in accordance with FAA Advisory Circular 70/7460-1, L Change 1, Obstruction Marking and Lighting, white paint only - Chapters 12&13(Turbines).

Any failure or malfunction that lasts more than thirty (30) minutes and affects a top light or flashing obstruction light, regardless of its position, should be reported immediately to (877) 487-6867 so a Notice to Airmen (NOTAM) can be issued. As soon as the normal operation is restored, notify the same number.

So that aeronautical charts and records can be updated, it is required that FAA Form 7460-2, Notice of Actual Construction or Alteration, be e-filed when the new system is installed and operational.

Obstruction marking and lighting recommendations for wind turbine farms are based on the scheme for the entire project. ANY change to the height, location or number of turbines within this project will require a reanalysis of the marking and lighting recommendation for the entire project. In particular, the removal of previously planned or built turbines/turbine locations from the project will often result in a change in the marking/lighting recommendation for other turbines within the project. It is the proponent's responsibility to contact the FAA to discuss the process for developing a revised obstruction marking and lighting plan should this occur.

In order to ensure proper conspicuity of turbines at night during construction, all turbines should be lit with temporary lighting once they reach a height of 200 feet or greater until such time the permanent lighting configuration is turned on. As the height of the structure continues to increase, the temporary lighting should be relocated to the uppermost part of the structure. The temporary lighting may be turned off for periods when they would interfere with construction personnel. If practical, permanent obstruction lights should be installed

and operated at each level as construction progresses. An FAA Type L-810 steady red light fixture shall be used to light the structure during the construction phase. If power is not available, turbines shall be lit with self-contained, solar powered LED steady red light fixture that meets the photometric requirements of an FAA Type L-810 lighting system. The lights should be positioned to ensure that a pilot has an unobstructed view of at least one light at each level. The use of a NOTAM (D) to not light turbines within a project until the entire project has been completed is prohibited.

This evaluation concerns the effect of the marking/lighting changes on the safe and efficient use of navigable airspace by aircraft and does not relieve the sponsor of compliance responsibilities relating to any law, ordinance, or regulation of any Federal, State, or local government body.

If we can be of further assistance, please contact our office at (202) 267-5235. On any future correspondence concerning this matter, please refer to Aeronautical Study Number 2016-WTE-3851-OE.

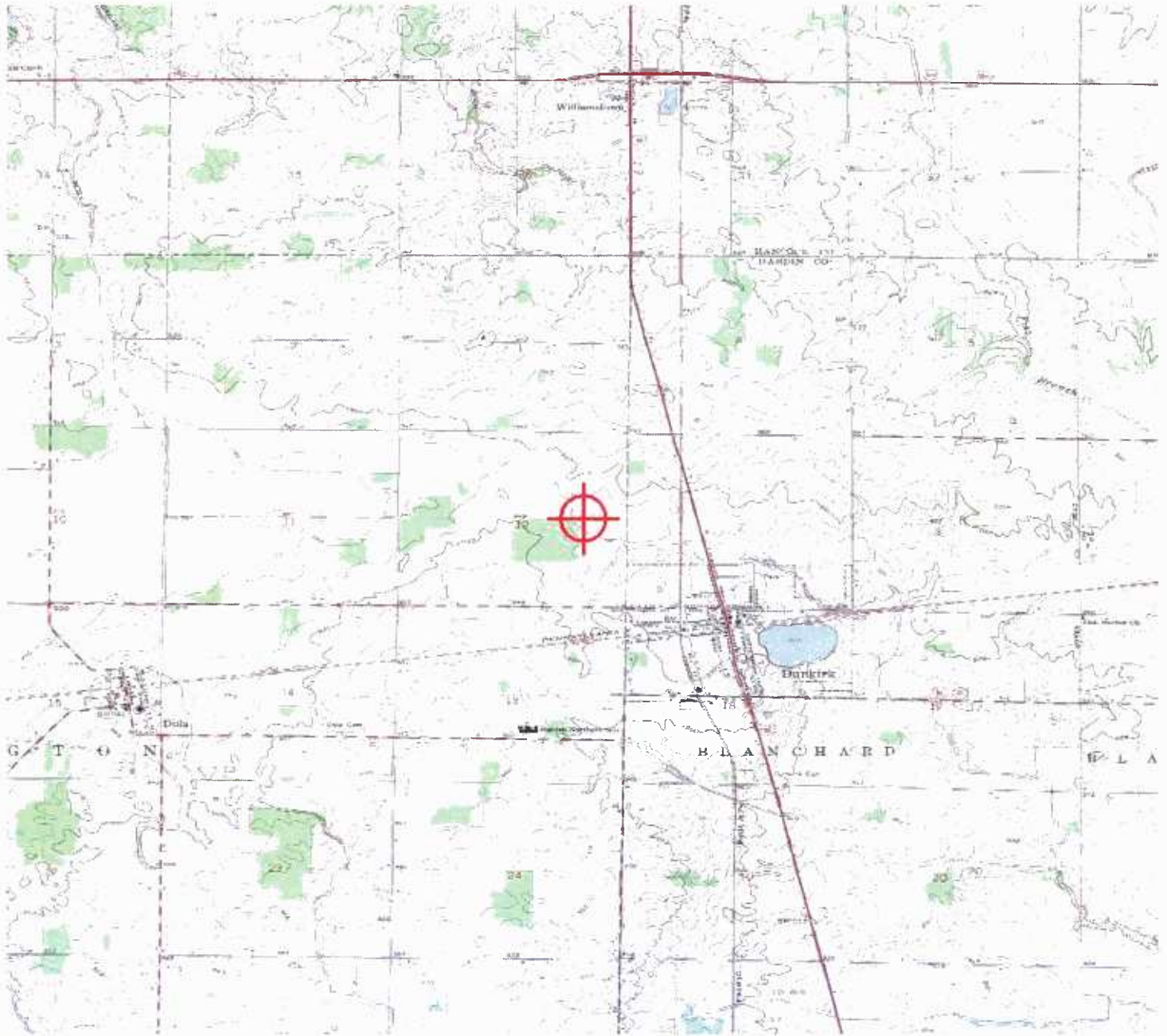
Signature Control No: 295877191-313167800

(MAL -WT)

Tracy Rosgen
Technician

Attachment(s)

Map(s)





This foregoing document was electronically filed with the Public Utilities

Commission of Ohio Docketing Information System on

4/4/2017 2:04:34 PM

in

Case No(s). 09-0277-EL-BGN, 10-0654-EL-BGN

Summary: Correspondence of Hog Creek Wind Farm, LLC regarding compliance with Condition No. 49 - FAA and ODOT-OA requirements electronically filed by Teresa Orahod on behalf of Sally W. Bloomfield