



COLUMBUS | CLEVELAND  
CINCINNATI-DAYTON  
MARIETTA

**BRICKER & ECKLER LLP**  
100 South Third Street  
Columbus, OH 43215-4291  
MAIN: 614.227.2300  
FAX: 614.227.2390

www.bricker.com  
info@bricker.com

**Sally W. Bloomfield**  
614.227.2368  
sbloomfield@bricker.com

November 15, 2016

*Via Electronic Filing*

Ms. Barcy McNeal  
Public Utilities Commission of Ohio  
Administration/Docketing  
180 East Broad Street, 11<sup>th</sup> Floor  
Columbus, OH 43215-3793

**Re: Hardin Wind Energy LLC,  
Case Nos. 09-479-EL-BGN**

Dear Ms. McNeal:

The March 22, 2010 Opinion, Order, and Certificate ("Certificate") approving Hardin Wind Energy LLC's ("Hardin Wind Energy") Certificate of Environmental Compatibility and Public Need established a set of conditions as part of the Certificate. On April 29, 2011 in Case No. 11-3446-EL-BGA, the Ohio Power Siting Board ("OPSB") approved an amendment ("Amended Certificate") to Hardin Wind Energy's Certificate, which also established an additional set of conditions.

Within this set of conditions, **Certificate Condition No. 24** requires that:

**Hardin shall provide the final delivery route plan and the results of any traffic studies to staff and to the Hardin County Engineer 30 days prior to the preconstruction conference. Hardin shall complete a study on the final equipment delivery route to determine what improvements will be needed in order to transport equipment to the wind turbine construction sites. Hardin shall make improvements to the final delivery route as outlined in the study and/or as mutually agreed upon by the applicant and the Hardin County Engineer.**

On October 31, 2016, Hardin Wind Energy filed its Transportation Plan for the 2016 construction phase. In compliance with Certificate Condition No. 24, attached is a copy of the updated Transportation Plan dated November 2016 for this phase of construction.

If you have any questions please call at the number listed above.

Sincerely,

Sally W. Bloomfield

Attachment

cc: Derek Collins (w/Attachment)  
Andrew Conway (w/Attachment)



# Transportation Plan

## *Hardin Wind Project Hardin County, Ohio*

Invenergy, LLC  
Chicago, Illinois

Revision 1: November 2016



# Transportation Plan Hardin Wind Project

November 2016

## Contents

1.0	Introduction .....	1
2.0	Transportation Route .....	2
2.1	Route A – Lima, OH.....	2
2.2	Route B – Kenton, OH.....	2
2.3	Route C – Bellefontaine, OH.....	3

## List of Figures

Figure 1.....Transportation Route A

Figure 2.....Transportation Route B

Figure 3.....Transportation Route C

## 1.0 Introduction

Invenergy, LLC (Invenergy) is planning to construct the Hardin County Wind Project. The proposed Hardin County Wind Project is located on rural farmland in Hardin County, Ohio, outside of the town of Alger.

The proposed Hardin County Wind Project will be completed in two phases:

1. Phase 1 will be completed in December of 2016 and will involve the excavations and pouring of the mud mats and backfilling for 8 turbine foundations.
2. Phase 2 will be completed in 2017 and will involve construction of access roads, further excavations, laydown yards, and turbine delivery and installation.

This transportation plan is completed ONLY for Phase 1 of the project. Phase 2 will require a different transportation plan due to restrictions for delivery of wind turbine components.

This document describes transportation routes to the site from the three nearest major towns (Lima, Kenton, and Bellefontaine).

## 2.0 Transportation Route

The expected construction traffic for Phase 1 will consist of ready mix trucks, concrete pump truck, aggregate dump truck, and semi-trailers loaded with typical construction equipment for excavation and grading (i.e., bulldozers, backhoe excavators, etc.). This transportation plan does NOT include routes for delivery of wind turbine components.

The actual location from where the loads will originate is unknown at the time. For this reason, the routes presented in this report were developed from the three nearest major towns where the loads may be expected to originate or pass through:

- Lima
- Kenton
- Bellefontaine

Following are the routes to be used for each of the towns selected:

### 2.1 Route A – Lima, OH

For turbines 2 through 38, construction traffic from Lima (starting at Interstate Highway 75) will travel east on State Highway 309 for approximately 12.1 miles. Traffic will then turn right (south) onto State Highway 235 and continue to the town of Alger (N Front St.) for 1.8 miles. Following State Highway 235, traffic will turn right (west) onto Lee St. for 0.2 miles (three town blocks) then left (south) onto S McConnell St/State Highway 35. Traffic will continue on State Highway 235 until reaching local township roads used to gain access to turbine access (Figure 1).

For turbines 101 through 121, construction traffic from Lima (starting at Interstate Highway 75) will travel east on State Highway 309 for approximately 24.9 miles until reaching local township roads used to gain access to turbine access (Figure 1).

Traffic returning to Lima will take the same route back.

### 2.2 Route B – Kenton, OH

For turbines 2 through 38, construction traffic from Kenton will travel west on State Highway 309 for approximately 14.0 miles. Traffic will then turn left (south) onto State Highway 235 and continue to the town of Alger (N Front St.) for 1.8 miles. Following State Highway 235, traffic will turn right (west) onto Lee St. for 0.2 miles (three town blocks) then left (south) onto S McConnell St/State Highway 35. Traffic will continue on State Highway 235 until reaching local township roads used to gain access to turbine access (Figure 2).

For turbines 101 through 121, construction traffic from Kenton will travel west on State Highway 309 for approximately 7.5 miles until reaching local township roads used to gain access to turbine access (Figure 2).

Traffic returning to Kenton will take the same route back.

## 2.3 Route C – Bellefontaine, OH

For turbines 2 through 38, construction traffic from Bellefontaine will travel north on US Highway 68 for approximately 1.4 miles. Traffic will then turn right to merge onto US Highway 33 west. Traffic will travel west for approximately 4.8 miles and exit right (north) on State Highway 117 toward the town of Huntsville. After 9.1 miles traffic will continue straight (north) along State Highway 235 to the town of Roundhead. Traffic will turn right (east) on High St. and after two town blocks will turn left (north) to continue on State Highway 235. From there traffic will continue on State Highway 235 for 6 to 10 miles until reaching local township roads used to gain access to turbine access (Figure 3).

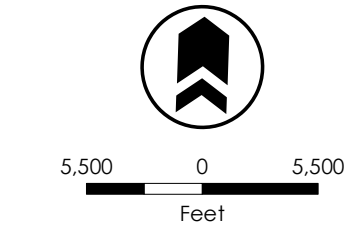
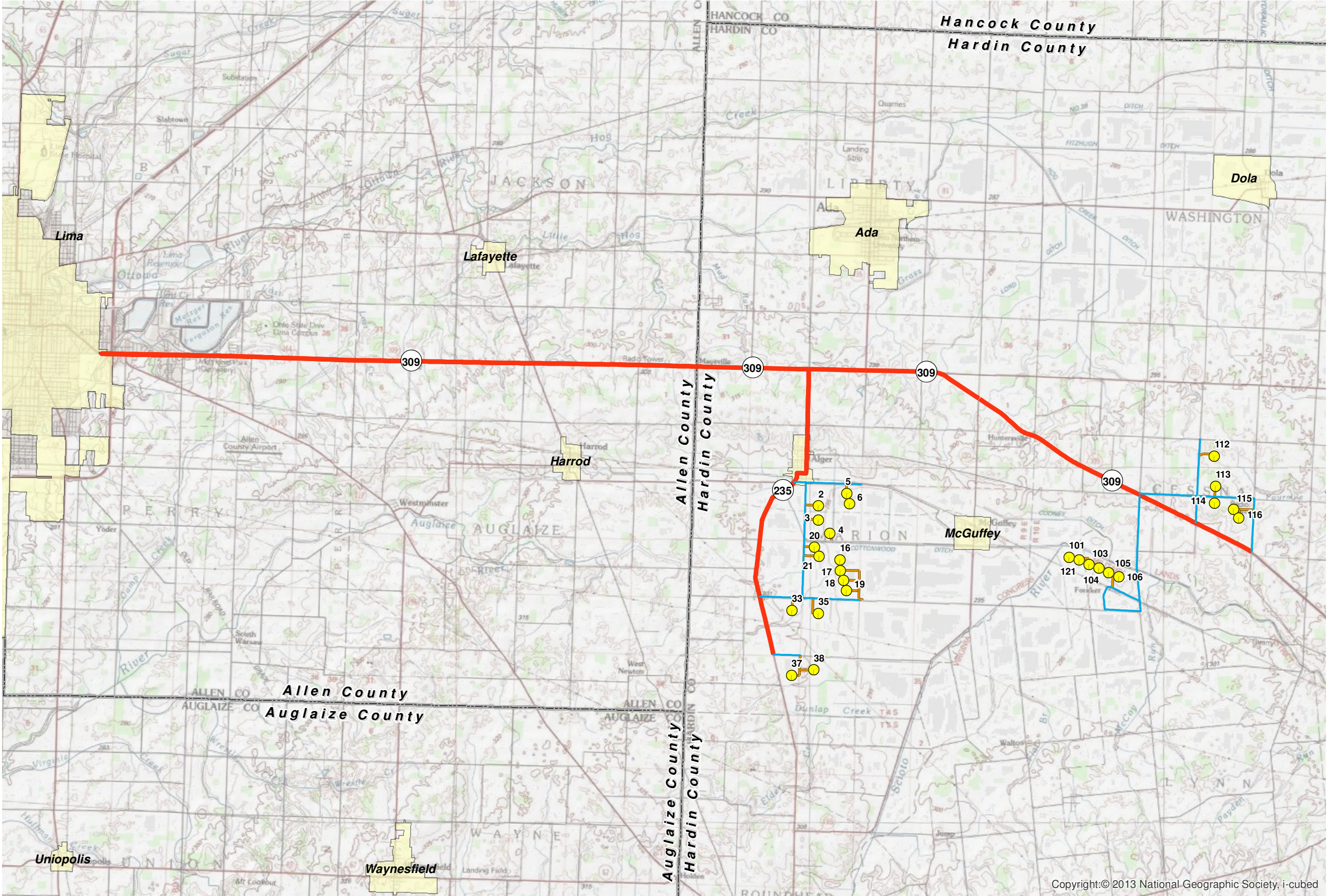
For turbines 101 through 121, construction traffic from Bellefontaine will travel north on US Highway 68 for approximately 1.4 miles. Traffic will then turn right to merge onto US Highway 33 west. Traffic will travel west for approximately 4.8 miles and exit right (north) on State Highway 117 toward the town of Huntsville. After 9.1 miles traffic will turn right (east) on High St. and after two town blocks will turn left (north) to continue on State Highway 235 for 10.6 miles to the town of Alger. From there, traffic will turn right (east) onto Lee St. for 0.2 miles, and then turn left (north) on S Front St. Traffic will continue straight north for 2 miles to the intersection with State Highway 309, where traffic will turn right (east) and continue for 8.6 miles until reaching local township roads used to gain access to turbine access (Figure 3).

Traffic returning to Bellefontaine will take the same route back.

The routes presented above were selected to minimize the use of local roads to the extent possible. Load limits were not reviewed for the routes. Being that the routes selected follow County Roads, it is expected that the limits imposed are typical State Regulations as described in Chapter 5577 of the Ohio Laws and Rules.

## Figures





- Legend**
- Turbine Location
  - Access Road
  - On-site Transportation Plan
  - Transportation Plan
  - County Boundary

Copyright:© 2013 National Geographic Society, i-cubed

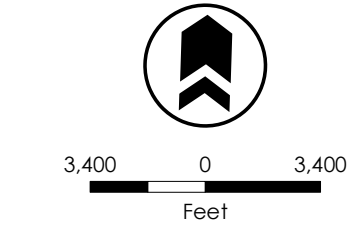
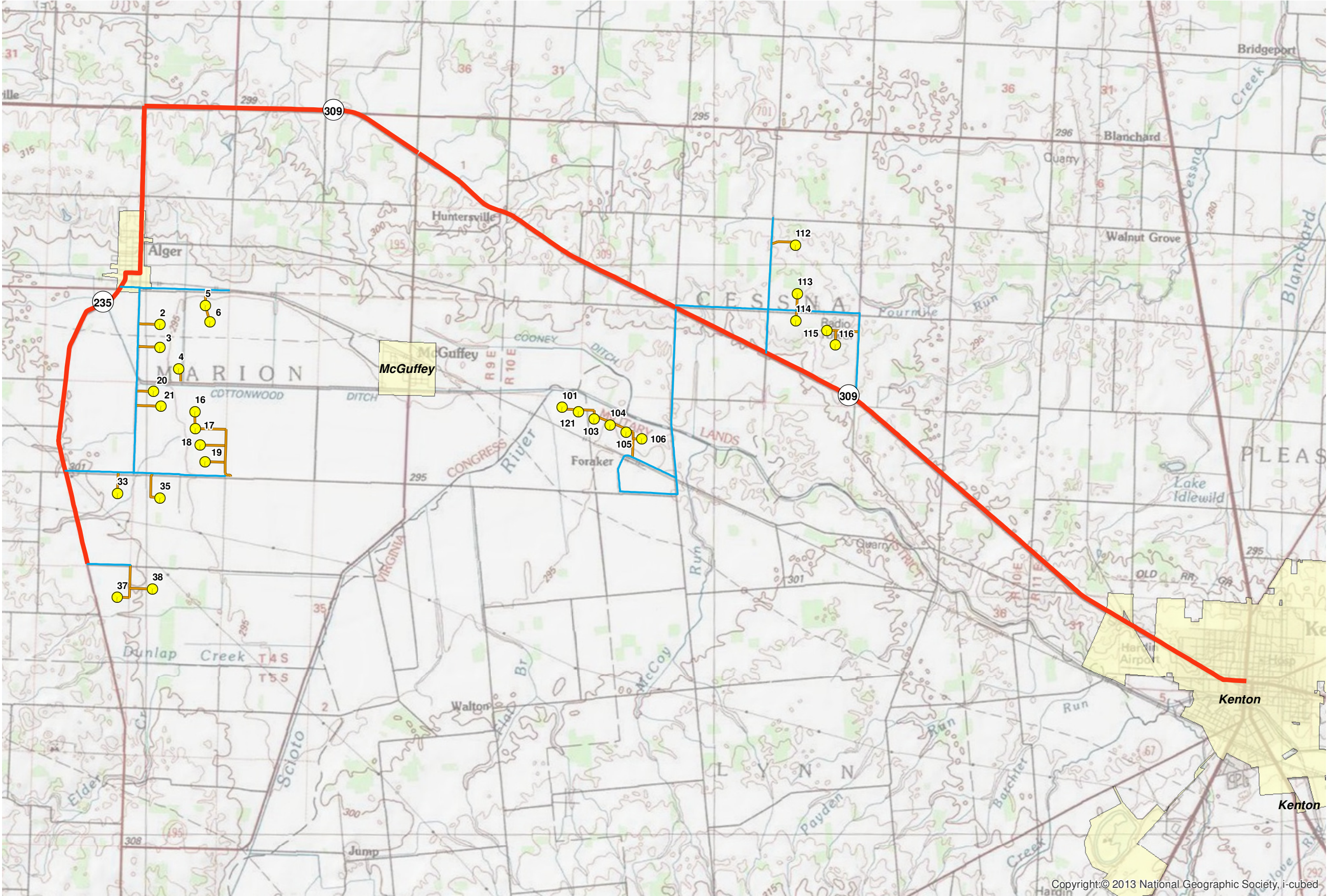
# Transportation Route A

Hardin Wind Energy Center, Hardin County, Ohio

Rev. 00  
November 10, 2016







- Legend**
- Turbine Location
  - Access Road
  - On-site Transportation Plan
  - Transportation Plan
  - County Boundary

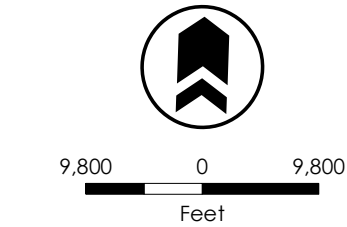
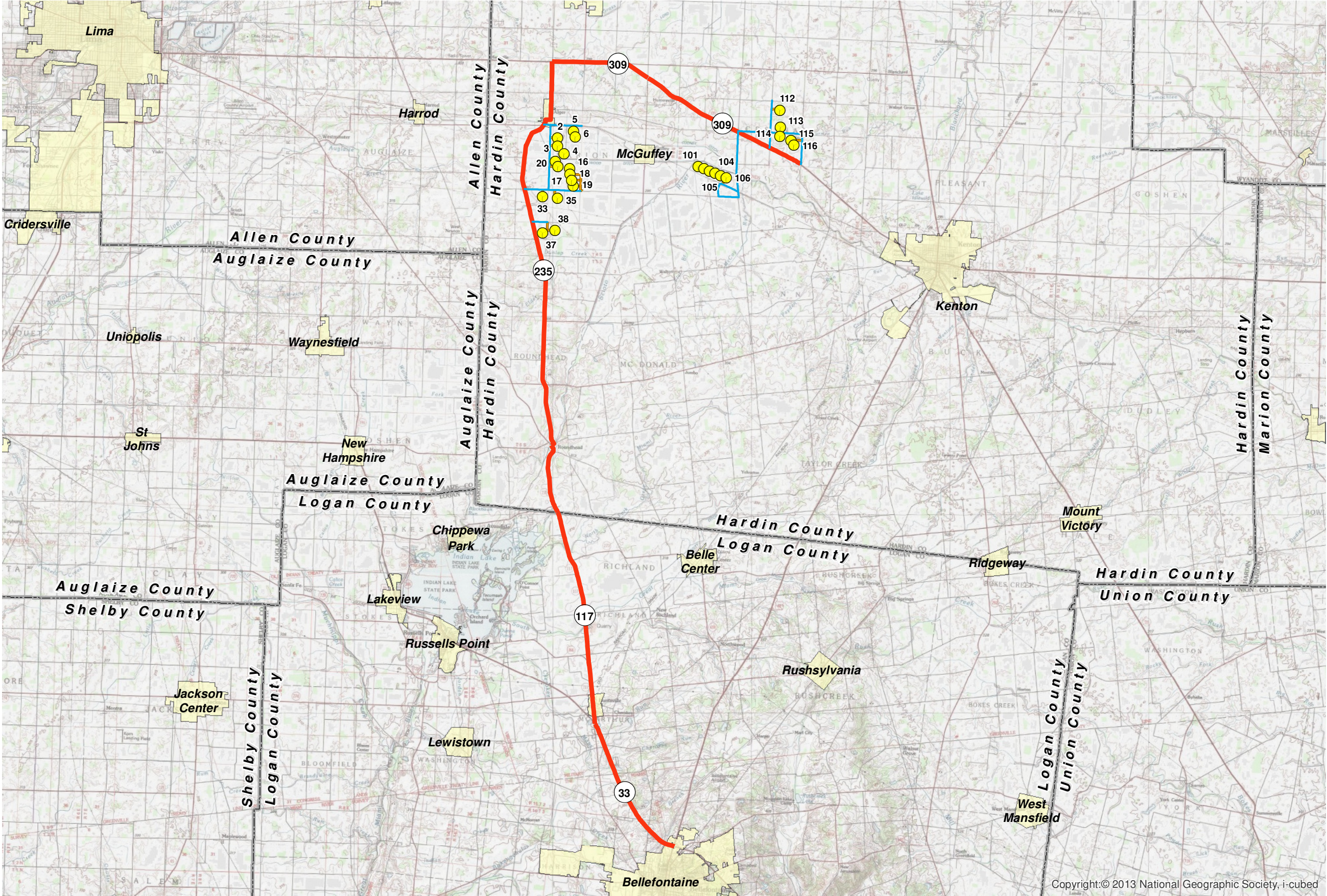
# Transportation Route B

Hardin Wind Energy Center, Hardin County, Ohio

Rev. 00  
November 10, 2016







- Legend**
- Turbine Location
  - Access Road
  - On-site Transportation Plan
  - Transportation Plan
  - County Boundary

# Transportation Route C

Hardin Wind Energy Center, Hardin County, Ohio

Rev. 00  
November 10, 2016





**This foregoing document was electronically filed with the Public Utilities**

**Commission of Ohio Docketing Information System on**

**11/15/2016 1:44:59 PM**

**in**

**Case No(s). 09-0479-EL-BGN**

Summary: Correspondence of Hardin Wind Energy LLC in Compliance with Condition No. 24 - Updated Transportation Plan electronically filed by Teresa Orahod on behalf of Sally W. Bloomfield