



COLUMBUS | CLEVELAND
CINCINNATI-DAYTON
MARIETTA

BRICKER & ECKLER LLP
100 South Third Street
Columbus, OH 43215-4291
MAIN: 614.227.2300
FAX: 614.227.2390

www.bricker.com
info@bricker.com

Sally W. Bloomfield
614.227.2368
sbloomfield@bricker.com

November 14, 2016

Via Electronic Filing

Ms. Barcy McNeal
Public Utilities Commission of Ohio
Administration/Docketing
180 East Broad Street, 11th Floor
Columbus, OH 43215-3793

**Re: Hardin Wind Energy LLC,
Case Nos. 09-479-EL-BGN and 11-3446-EL-BGA**

Dear Ms. McNeal:

The March 22, 2010 Opinion, Order, and Certificate (“Certificate”) approving Hardin Wind Energy LLC’s (“Hardin Wind Energy”) Certificate of Environmental Compatibility and Public Need established a set of conditions as part of the Certificate. On April 29, 2011 in Case No. 11-3446-EL-BGA, the Ohio Power Siting Board (“OPSB”) approved an amendment (“Amended Certificate”) to Hardin Wind Energy’s Certificate, which also established an additional set of conditions.

Within this set of conditions, **Certificate Condition No. 45** requires that:

Prior to construction, Hardin shall submit the final layout and turbine locations to the NTIA for review and approval.

In compliance with Certificate Condition No. 45, attached is the September 20, 2016, submission to the NTIA (Attachment 1), and a copy of the NTIA’s November 10, 2016 e-mail stating that there was no issues with turbine placement in the designated area (Attachment 2).

If you have any questions please call at the number listed above.

Sincerely,

Sally W. Bloomfield

Attachment

cc: Andrew Conway (w/Attachment)
Derek Collins (w/Attachment)

Date: September 20, 2016

Type of Notification: New

Project: Hardin Wind Energy Project

County: Hardin

State: Ohio

Project Sponsor: Nicolas Galleguillos, Project Engineer
Invenergy LLC
1 S. Wacker Drive, Suite 1800
Chicago, IL 60606
Phone: 312-582-1441
Email: ngalleguillosriff@invenergyllc.com

Turbine Description:

Number of Turbines: 107 Units
Turbine Hub Height AGL (meters): 94m
Turbine Blade Diameter (meters): 116m
Maximum Blade Tip Height AGL (meters): 152m

Turbine Locations:

Identifier	Latitude	Longitude
1	40° 42.06932' N	83° 50.09489' W
2	40° 41.89499' N	83° 50.26140' W
3	40° 41.67856' N	83° 50.25008' W
4	40° 41.48097' N	83° 50.01094' W
5	40° 42.09200' N	83° 49.69956' W
6	40° 41.93681' N	83° 49.63689' W
8	40° 41.60990' N	83° 49.45834' W
9	40° 41.48306' N	83° 49.29749' W
10	40° 41.24657' N	83° 49.20018' W
11	40° 41.05785' N	83° 49.13827' W
12	40° 41.99450' N	83° 48.64735' W
15	40° 41.27021' N	83° 49.80180' W
16	40° 41.07920' N	83° 49.78946' W
17	40° 40.91790' N	83° 49.77766' W
18	40° 40.76609' N	83° 49.70948' W
19	40° 40.60834' N	83° 49.64105' W

20	40° 41.25869' N	83° 50.31461' W
21	40° 41.12118' N	83° 50.21435' W
22	40° 40.76126' N	83° 49.02354' W
23	40° 40.60437' N	83° 48.91969' W
24	40° 40.38516' N	83° 48.86196' W
25	40° 40.18204' N	83° 48.84158' W
26	40° 40.05786' N	83° 48.68163' W
27	40° 40.36008' N	83° 48.29898' W
28	40° 40.14815' N	83° 48.26602' W
31	40° 39.71368' N	83° 49.26120' W
33	40° 40.28339' N	83° 50.72463' W
35	40° 40.25220' N	83° 50.19168' W
37	40° 39.29648' N	83° 50.68479' W
38	40° 39.38561' N	83° 50.24719' W
39	40° 41.21497' N	83° 47.67815' W
40	40° 41.05663' N	83° 47.67792' W
41	40° 40.89831' N	83° 47.67698' W
42	40° 40.73997' N	83° 47.67675' W
43	40° 40.57681' N	83° 47.67973' W
44	40° 40.38615' N	83° 47.64777' W
45	40° 40.13440' N	83° 47.66635' W
47	40° 39.91483' N	83° 47.27110' W
49	40° 39.50743' N	83° 47.73668' W
50	40° 39.35727' N	83° 47.77795' W
51	40° 39.18196' N	83° 47.85365' W
52	40° 39.13121' N	83° 47.47190' W
53	40° 38.97291' N	83° 47.93857' W
54	40° 38.78339' N	83° 47.90936' W
55	40° 38.61710' N	83° 47.79102' W
56	40° 38.43372' N	83° 47.73157' W
57	40° 38.20516' N	83° 47.64045' W
58	40° 38.08540' N	83° 47.47513' W
59	40° 39.11878' N	83° 47.13647' W
60	40° 38.95860' N	83° 47.10071' W
61	40° 38.80848' N	83° 47.07318' W
62	40° 38.62076' N	83° 47.03628' W
63	40° 38.49202' N	83° 46.86207' W
64	40° 38.34344' N	83° 46.77077' W

65	40° 37.90096' N	83° 48.35059' W
66	40° 37.75898' N	83° 48.29996' W
67	40° 37.60475' N	83° 48.24172' W
68	40° 37.46421' N	83° 48.13157' W
69	40° 37.28957' N	83° 48.06824' W
70	40° 37.08910' N	83° 48.13362' W
71	40° 37.25637' N	83° 48.63354' W
72	40° 37.08902' N	83° 48.67049' W
73	40° 37.71929' N	83° 47.72628' W
76	40° 40.93671' N	83° 46.82600' W
77	40° 40.82992' N	83° 46.68242' W
79	40° 41.02957' N	83° 46.17816' W
80	40° 40.87919' N	83° 46.09384' W
81	40° 36.04383' N	83° 45.87349' W
83	40° 41.70880' N	83° 46.67635' W
84	40° 41.66991' N	83° 46.42835' W
85	40° 41.59247' N	83° 46.14255' W
86	40° 41.49209' N	83° 45.95663' W
88	40° 41.67617' N	83° 45.60427' W
91	40° 41.91106' N	83° 45.06934' W
92	40° 41.69541' N	83° 44.95680' W
94	40° 42.01025' N	83° 44.51245' W
97	40° 41.95016' N	83° 43.99305' W
98	40° 41.78427' N	83° 43.99194' W
99	40° 35.26110' N	83° 46.30910' W
101	40° 41.23339' N	83° 45.20403' W
102	40° 36.31320' N	83° 45.97678' W
103	40° 41.12906' N	83° 44.79720' W
104	40° 41.07759' N	83° 44.59855' W
105	40° 41.01431' N	83° 44.39564' W
106	40° 40.95476' N	83° 44.19514' W
107	40° 40.68109' N	83° 43.45504' W
108	40° 40.91781' N	83° 45.45157' W
109	40° 40.80095' N	83° 45.23094' W
110	40° 40.66765' N	83° 45.04160' W
111	40° 42.53362' N	83° 42.92607' W
112	40° 42.83790' N	83° 42.35037' W
113	40° 42.38166' N	83° 42.30916' W

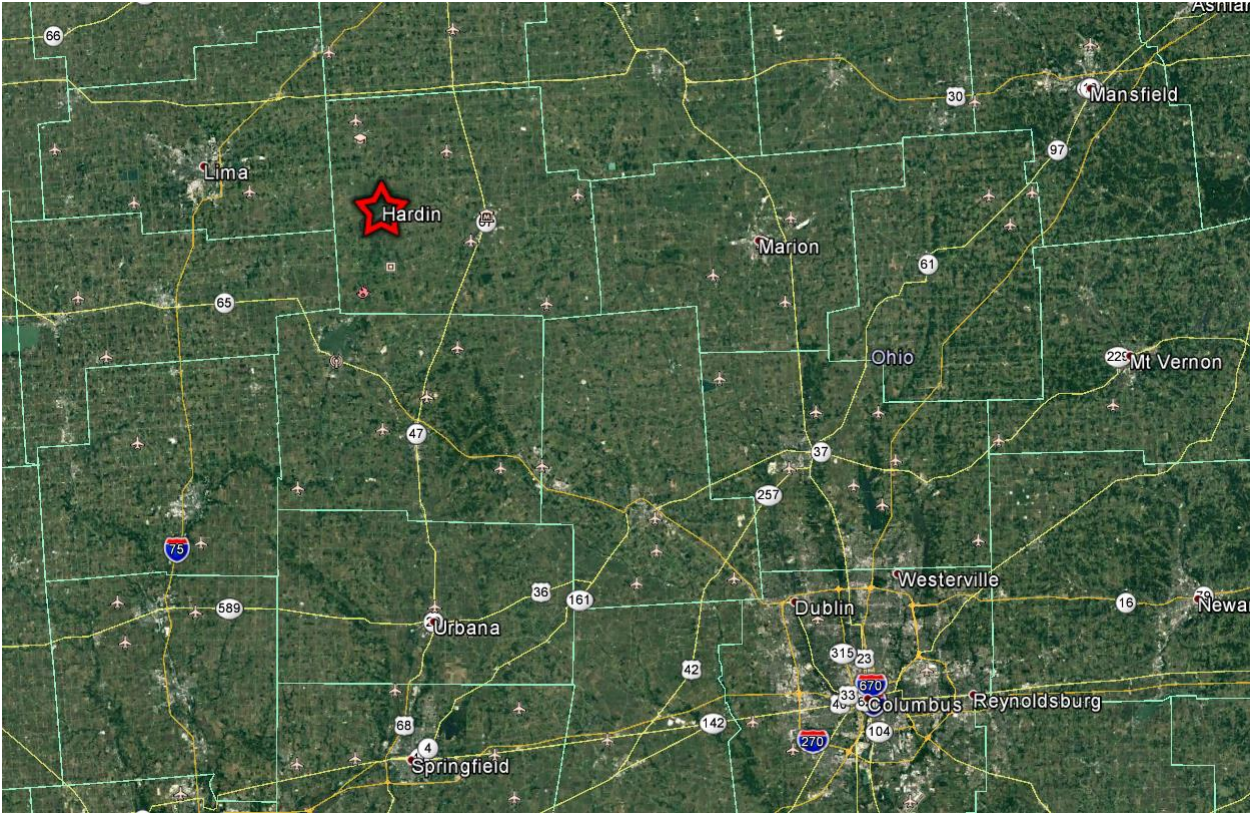
114	40° 42.12313' N	83° 42.31787' W
115	40° 42.03937' N	83° 41.92534' W
116	40° 41.90629' N	83° 41.81558' W
118	40° 41.51734' N	83° 42.84573' W
121	40° 41.19134' N	83° 44.99570' W
123	40° 41.52621' N	83° 44.82275' W
124	40° 41.86267' N	83° 44.53693' W
125	40° 40.37953' N	83° 45.97166' W
126	40° 40.22928' N	83° 45.90440' W
127	40° 40.89692' N	83° 49.13361' W
129	40° 37.88974' N	83° 47.20806' W
130	40° 40.55372' N	83° 44.92405' W
131	40° 40.90164' N	83° 47.24906' W
132	40° 40.76371' N	83° 48.27971' W
133	40° 40.58718' N	83° 48.22759' W

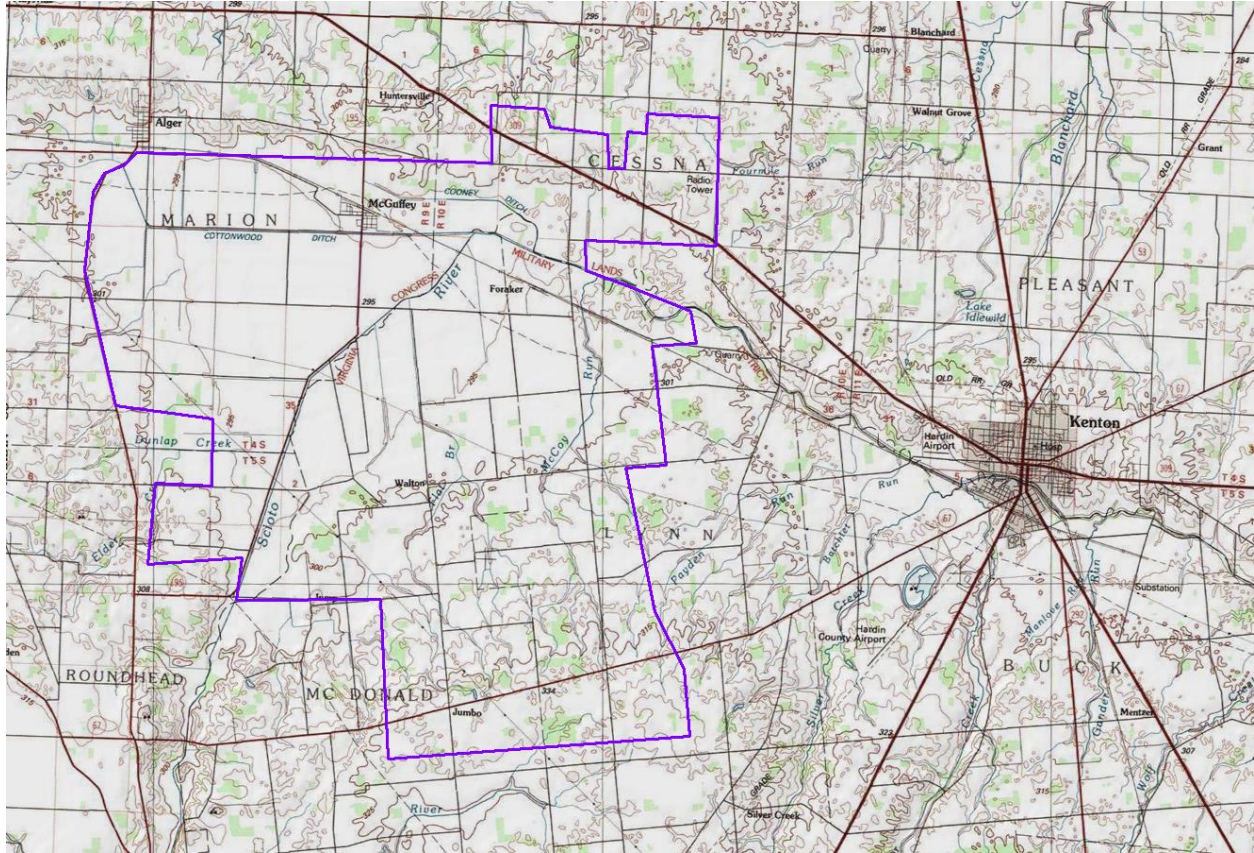
Wind Farm Boundary Points: NAD83

Idx	LATITUDE	LONGITUDE
1	40° 39.18717' N	83° 50.91943' W
2	40° 40.79568' N	83° 51.47972' W
3	40° 41.73965' N	83° 51.38593' W
4	40° 41.97074' N	83° 51.21693' W
5	40° 42.08084' N	83° 50.89367' W
6	40° 42.23295' N	83° 50.70636' W
7	40° 42.24412' N	83° 45.10147' W
8	40° 42.93515' N	83° 45.14485' W
9	40° 42.91002' N	83° 44.29392' W
10	40° 42.69679' N	83° 44.19572' W
11	40° 42.62761' N	83° 43.28341' W
12	40° 42.21992' N	83° 43.25189' W
13	40° 42.22589' N	83° 42.99870' W
14	40° 42.67642' N	83° 42.97727' W
15	40° 42.65336' N	83° 42.67151' W
16	40° 42.89029' N	83° 42.67450' W
17	40° 42.87146' N	83° 41.54055' W
18	40° 41.33405' N	83° 41.51835' W
19	40° 41.35105' N	83° 43.58583' W
20	40° 40.99369' N	83° 43.55801' W

21	40° 40.83174' N	83° 42.94205' W
22	40° 40.54378' N	83° 41.89054' W
23	40° 40.15804' N	83° 41.78227' W
24	40° 40.11139' N	83° 42.48235' W
25	40° 38.68277' N	83° 42.20196' W
26	40° 38.63740' N	83° 42.84556' W
27	40° 37.53136' N	83° 42.49735' W
28	40° 36.92312' N	83° 42.30900' W
29	40° 36.24249' N	83° 41.82008' W
30	40° 35.43979' N	83° 41.69850' W
31	40° 35.05505' N	83° 46.44506' W
32	40° 36.96766' N	83° 46.64331' W
33	40° 36.90119' N	83° 48.91842' W
34	40° 37.41339' N	83° 48.85061' W
35	40° 37.29762' N	83° 50.33469' W
36	40° 38.27523' N	83° 50.25698' W
37	40° 38.26312' N	83° 49.36289' W
38	40° 39.06817' N	83° 49.38194' W
39	40° 39.18717' N	83° 50.91943' W

Maps:





Submitted to: Joyce C. Henry, Email: jhenry@ntia.doc.gov
Office of Spectrum Management
National Telecommunications & Information Administration (NTIA)
Office Phone: (202) 482-2215

From: Galleguillos Riffo, Nicolas <NGalleguillosRiffo@inveneryllc.com>
Sent: Thursday, November 10, 2016 12:42 PM
To: Truckor, Kent; Birmingham, Daniel; Kaplan, Michael
Subject: Fwd: ^^WindMill Action Item^^ Hardin Project: Hardin County, OH

Importance: High

Nicolas Galleguillos
+1 414 687 4807
Sent from my Verizon 4G LTE Smartphone

----- Forwarded message -----

From: "Henry, Joyce"
To: "Galleguillos Riffo, Nicolas"
Subject: ^^WindMill Action Item^^ Hardin Project: Hardin County, OH
Date: Thu, Nov 10, 2016 10:36 AM



Hi Nick:

You will receive the Hardin final NLT COB 14 Nov. 4 agencies reviewed this project, (DOA, DOC, DOJ, and DON), none of them had issues with turbine placement in the designated area. If the turbine construction area changes, OR more turbines are added, then they would need to re-evaluate. Have a great weekend.

Joyce C. Henry

jhenry@ntia.doc.gov

202-482-2215

DOC/NTIA/OSM HQ

From:
Sent: Wednesday, November 09, 2016 4:53 PM
To: Henry, Joyce; 'faslist@osmmail.ntia.doc.gov'
Cc: Truckor, Kent; Birmingham, Daniel
Subject: RE: ^^WindMill Action Item^^ Hardin Project: Hardin County, OH

Hi Joyce,

When do you think we can receive the NTIA Response letter? Also, from which departments we should have expected comments or concerns? Thank you very much for your help.

Regards,

Nicolas Galleguillos Riffo | Project Electrical Engineer

Invenery LLC | One South Wacker Drive, Suite 1800, Chicago, IL 60606

ngalleguillosriffo@inveneryllc.com | 312-582-1441

This electronic message and all contents contain information which may be privileged, confidential or otherwise protected from disclosure. The information is intended to be for the addressee(s) only. If you are not an addressee, any disclosure, copy, distribution or use of the contents of this message is prohibited. If you have received this electronic message in error, please notify the sender by reply e-mail and destroy the original message and all copies.

From: Henry, Joyce [<mailto:JHenry@ntia.doc.gov>]

Sent: Friday, September 23, 2016 9:28 AM

To: 'faslist@osmmail.ntia.doc.gov' <faslist@osmmail.ntia.doc.gov>

Subject: ^^WindMill Action Item^^ Hardin Project: Hardin County, OH

Hello Everyone,

Please find attached an **INVENERGY LLC** turbine proposal for the Hardin Wind Project, located in Hardin County, Ohio.

Please provide by C.O.B. **November 7, 2016**, any comments or concerns; and, **DO NOT REPLY TO ALL** unless the desired intent is to respond to the entire FAS Mailing LIST! Replying to all may create unnecessary traffic to the Listserv.

Your comments will be sent by email to jhenry@ntia.doc.gov. If you indicate any concerns, please include all appropriate contact information in your response.

I will identify any concerns raised by the agencies and prepare our NTIA Response Letter. **Your contact information to include e-mail and USPS address**, will be important for any follow-up from the wind project developers.

Joyce C. Henry

DOC/NTIA/OSM HQ

Admin Assistant

202-482-2215

jhenry@ntia.doc.gov

This foregoing document was electronically filed with the Public Utilities

Commission of Ohio Docketing Information System on

11/14/2016 10:24:24 AM

in

Case No(s). 09-0479-EL-BGN, 11-3446-EL-BGA

Summary: Correspondence of Hardin Wind Energy LLC in Compliance with Condition No. 45 - NTIA Submission electronically filed by Teresa Orahod on behalf of Sally W. Bloomfield