



COLUMBUS | CLEVELAND
CINCINNATI-DAYTON
MARIETTA

BRICKER & ECKLER LLP
100 South Third Street
Columbus, OH 43215-4291
MAIN: 614.227.2300
FAX: 614.227.2390

www.bricker.com
info@bricker.com

Sally W. Bloomfield
614.227.2368
sbloomfield@bricker.com

October 31, 2016

Via Electronic Filing

Ms. Barcy McNeal
Public Utilities Commission of Ohio
Administration/Docketing
180 East Broad Street, 11th Floor
Columbus, OH 43215-3793

**Re: Hardin Wind Energy LLC,
Case Nos. 09-479-EL-BGN**

Dear Ms. McNeal:

The March 22, 2010 Opinion, Order, and Certificate ("Certificate") approving Hardin Wind Energy LLC's ("Hardin Wind Energy") Certificate of Environmental Compatibility and Public Need established a set of conditions as part of the Certificate. On April 29, 2011 in Case No. 11-3446-EL-BGA, the Ohio Power Siting Board ("OPSB") approved an amendment ("Amended Certificate") to Hardin Wind Energy's Certificate, which also established an additional set of conditions.

Within this set of conditions, **Certificate Condition No. 24** requires that:

Hardin shall provide the final delivery route plan and the results of any traffic studies to staff and to the Hardin County Engineer 30 days prior to the preconstruction conference. Hardin shall complete a study on the final equipment delivery route to determine what improvements will be needed in order to transport equipment to the wind turbine construction sites. Hardin shall make improvements to the final delivery route as outlined in the study and/or as mutually agreed upon by the applicant and the Hardin County Engineer.

In compliance with Certificate Condition No. 24, attached is a copy of the Transportation Plan for the 2016 construction phase.

If you have any questions please call at the number listed above.

Sincerely,

Sally W. Bloomfield

Attachment

cc: Derek Collins (w/Attachment)
Andrew Conway (w/Attachment)



Transportation Plan

Hardin Wind Project Hardin County, Ohio

Invenergy, LLC
Chicago, Illinois

Revision 0: September 2016



Transportation Plan Hardin Wind Project

September 2016

Contents

1.0	Introduction	1
2.0	Transportation Route	2
2.1	Route 1 – Lima, OH	2
2.2	Route 2 – Kenton, OH	2
2.3	Route 3 – Bellefontaine, OH	3

List of Figures

Figure 1..... Transportation Plan - Lima

Figure 2..... Transportation Plan - Kenton

Figure 3..... Transportation Plan - Bellefontaine

1.0 Introduction

Invenergy, LLC (Invenergy) is planning to construct the Hardin County Wind Project. The proposed Hardin County Wind Project is located on rural farmland in Hardin County, Ohio, outside of the town of Alger.

The proposed Hardin County Wind Project will be completed in two phases:

1. Phase 1 will be completed in November and December of 2016 and will involve the excavations and pouring of the mud mats and backfilling for 8 turbine foundations.
2. Phase 2 will be completed in 2017/18 and will involve construction of access roads, further excavations, laydown yards, and turbine delivery and installation.

This transportation plan is completed ONLY for Phase 1 of the project. Phase 2 will require a different transportation plan due to restrictions for delivery of wind turbine components.

This documents describes transportation routes to the site from the three nearest major towns (Lima, Kenton, and Bellefontaine).

2.0 Transportation Route

The expected construction traffic for Phase 1 will consist in ready mix trucks, concrete pump truck, aggregate dump truck, and semi-trailers loaded with typical construction equipment for excavation and grading (i.e., bulldozers, backhoe excavators, etc.). This transportation plan does NOT include routes for delivery of wind turbine components.

The actual location from where the loads will originate is unknown at the time. For this reason, the routes presented in this report are were developed from the three nearest major towns where the loads may be expected to originate or pass through:

- Lima
- Kenton
- Bellefontaine

Following are the routes to be used for each of the towns selected:

2.1 Route 1 – Lima, OH

Construction traffic from Lima (starting at Interstate Highway 75) will travel east on State Highway 309 for approximately 12.1 miles. Traffic will then turn right (south) onto State Highway 235 and continue to the town of Alger (N Front St.) for 1.8 miles. Following State Highway 235, traffic will turn right (west) onto Lee St. for 0.2 miles (three town blocks) then left (south) onto S McConnell St. Traffic will continue on State Highway 235 until reaching local township roads used to gain access to turbine access (Figure 1).

Traffic returning to Lima will take the same route back.

2.2 Route 2 – Kenton, OH

Construction traffic from Kenton will travel west on State Highway 309 for approximately 14.0 miles. Traffic will then turn left (south) onto State Highway 235 and continue to the town of Alger (N Front St.) for 1.8 miles. Following State Highway 235, traffic will turn right (west) onto Lee St. for 0.2 miles (three town blocks) then left (south) onto S McConnell St. Traffic will continue on State Highway 235 until reaching local township roads used to gain access to turbine access (Figure 2).

Traffic returning to Kenton will take the same route back.

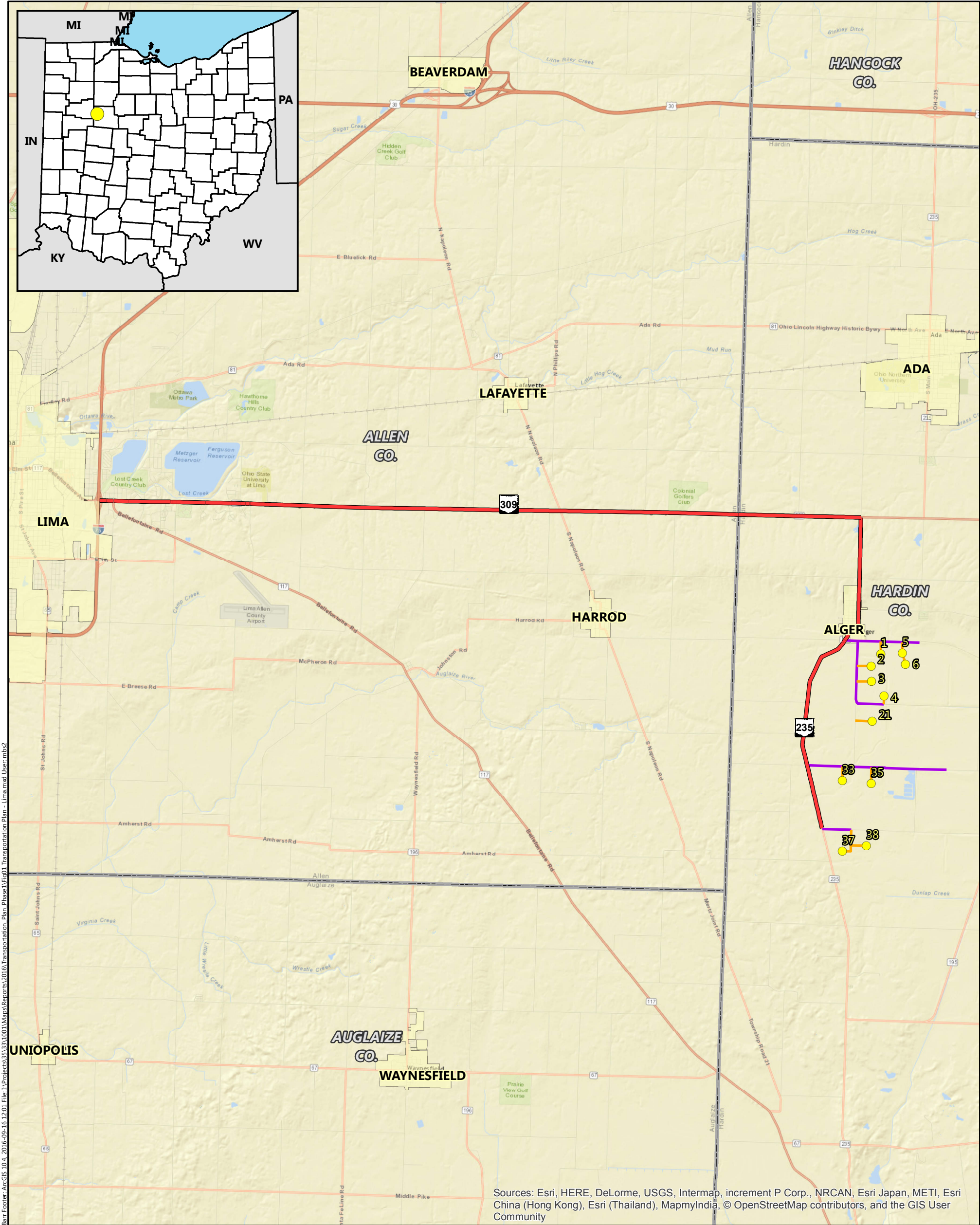
2.3 Route 3 – Bellefontaine, OH

Construction traffic from Bellefontaine will travel north on US Highway 68 for approximately 1.4 miles. Traffic will then turn right to merge onto US Highway 33 west. Traffic will travel west for approximately 4.8 miles and exit right (north) on State Highway 117 toward the town of Huntsville. After 9.1 miles traffic will continue straight (north) along State Highway 235. From there traffic will continue on State Highway 235 for 6 to 10 miles until reaching local township roads used to gain access to turbine access (Figure 3).





Traffic returning to Bellefontaine will take the same route back.

The routes presented above were selected to minimize the use of local roads to the extent possible. Load limits were not reviewed for the routes. Being that the routes selected follow County Roads, it is expected that the limits imposed are typical State Regulations as described in Chapter 5577

Figures



Bar Footer: ArcGIS 10.4, 2015-09-16 12:01, File: I:\Projects\353331001\Maps\Reports\2016\Transportation Plan Phase1\Fig01 Transportation Plan - Lima.mxd User:mb2

-  Turbine Location (8/5/2016)
-  Transportation Plan - Lima
-  On-site Transportation Route
-  On-site Access Road

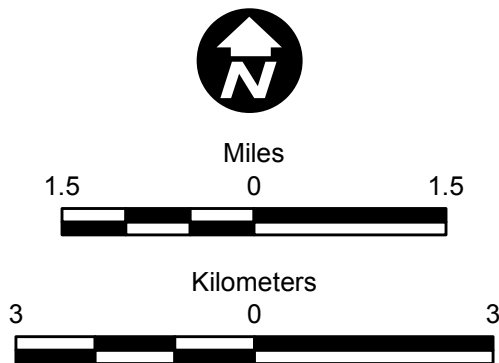
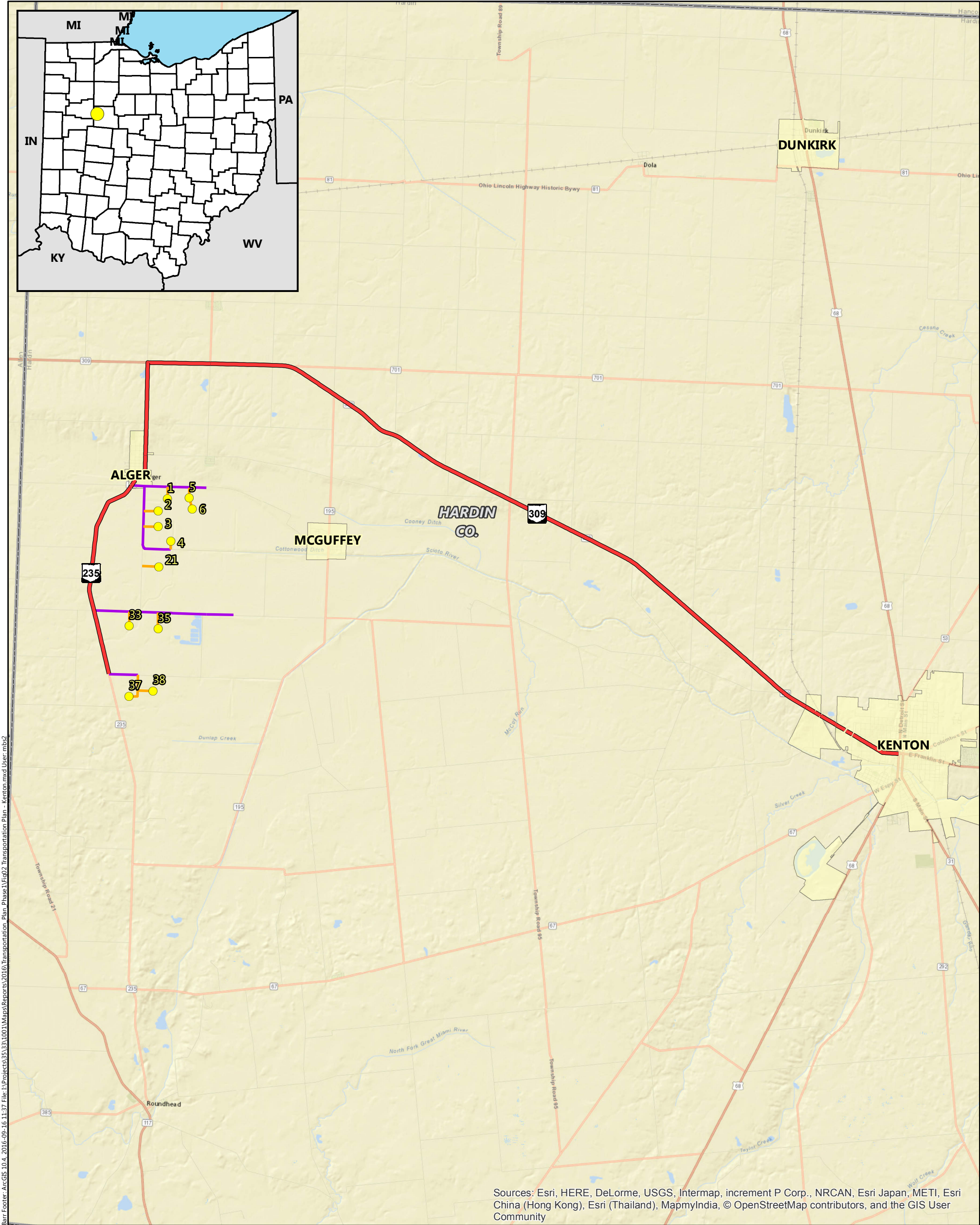






Figure 1

TRANSPORTATION PLAN
- LIMA -
Hardin Wind Project
Invenergy LLC
Hardin County, Ohio



-  Turbine Location (8/5/2016)
-  Transportation Plan - Kenton
-  On-site Transportation Route
-  On-site Access Road

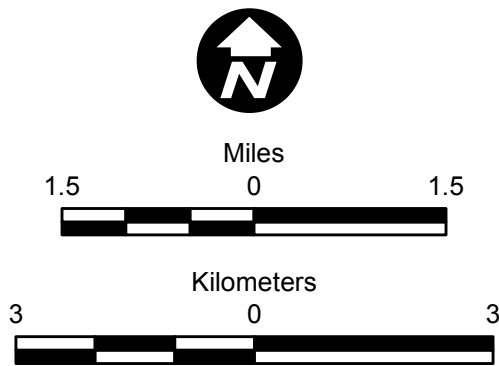
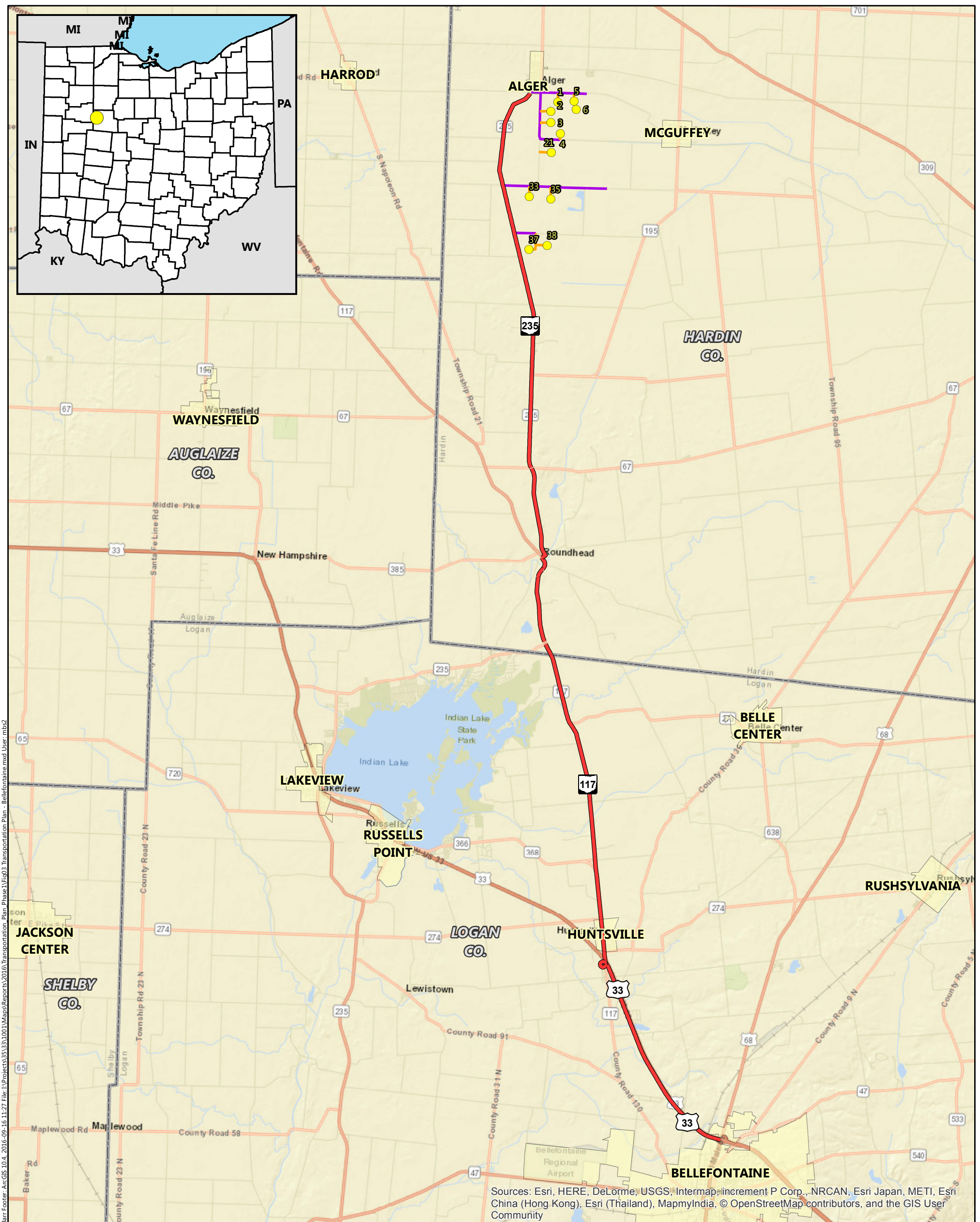






Figure 2

TRANSPORTATION PLAN
- KENTON -
Hardin Wind Project
Invenergy LLC
Hardin County, Ohio



-  Turbine Location (8/5/2016)
-  Transportation Plan - Bellefontaine
-  On-site Transportation Route
-  On-site Access Road

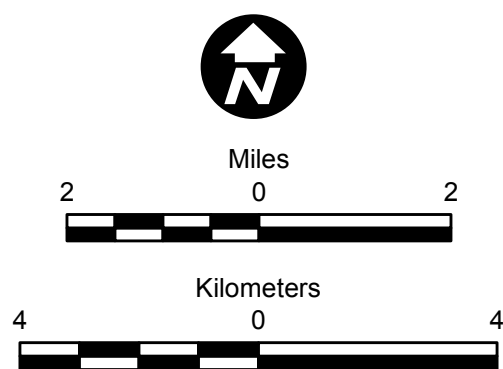


Figure 3

TRANSPORTATION PLAN

- BELLEFONTAINE -

Hardin Wind Project

Invenergy LLC

Hardin County, Ohio

This foregoing document was electronically filed with the Public Utilities

Commission of Ohio Docketing Information System on

10/31/2016 5:01:51 PM

in

Case No(s). 09-0479-EL-BGN

Summary: Correspondence Hardin Wind Energy LLC in Compliance with Certificate No. 24 -
Transportation Plan electronically filed by Teresa Orahod on behalf of Sally W. Bloomfield