



COLUMBUS | CLEVELAND
CINCINNATI-DAYTON
MARIETTA

BRICKER & ECKLER LLP
100 South Third Street
Columbus, OH 43215-4291
MAIN: 614.227.2300
FAX: 614.227.2390

www.bricker.com
info@bricker.com

Sally W. Bloomfield
614.227.2368
sbloomfield@bricker.com

October 11, 2016

Via Electronic Filing

Ms. Barcy McNeal
Administration/Docketing
Public Utilities Commission of Ohio
180 East Broad Street, 11th Floor
Columbus, OH 43215-3793

**Re: Clean Energy Future-Lordstown, LLC,
OPSB Case Nos. 14-2322-EL-BGN and 16-494-EL-BGA**

Dear Ms. McNeal:

The September 17, 2015, Opinion, Order, and Certificate ("Certificate") approving Clean Energy Future-Lordstown, LLC ("CEFL") Certificate of Environmental Compatibility and Public Need to Construct the Lordstown Energy Center established a set of conditions as part of the Certificate. On June 30, 2016, the Ohio Power Siting Board (OPSB) approved CEFL's application for a second amendment subject to the conditions set forth in the Certificate case ("Second Amendment").

Within this set of conditions, **Certificate Condition No. 22** requires that:

Prior to commencement of construction activities that require transportation permits, the Applicant shall obtain all such permits. The Applicant shall coordinate with the appropriate authority regarding any temporary or permanent road closures, lane closures, road access restrictions, and traffic control necessary for construction and operation of the proposed facility. The Applicant's process for coordination shall be detailed as part of a final traffic plan submitted to Staff prior to the preconstruction conference for review and confirmation that it complies with this condition.

Attached is a copy of an updated September 2016 Traffic Management Plan. A copy of the updated plan was provided to the OPSB Staff on September 27, 2016. Thus, this letter is to inform the OPSB Staff that CEFL is in compliance with **Certificate Condition No. 22**.

If you have any questions please call at the number listed above.

Sincerely,

Sally W. Bloomfield

Attachment

cc: Jon Whitis (w/Attachment)
Grant Zeto (w/Attachment)

TRAFFIC MANAGEMENT PLAN

Clean Energy Future – Lordstown

Trumbull County, Lordstown, Ohio

March 2016

Updated September 2016

Prepared for:

Siemens

Prepared by:

Tetra Tech, Inc.

6715 Tippecanoe Road, Suite C201
Canfield, OH 44406

Table of Contents

1.0	PROJECT BACKGROUND	1
2.0	TRAFFIC EXPECTATIONS.....	1
3.0	ROAD ACCESS	1
3.1	Local Coordination	1
3.2	Heavy Haul/Wide Load Permits	1
3.3	Construction Access	2
3.4	Proposed Road Routes.....	2
4.0	RAIL ACCESS.....	3
5.0	ROAD USE MAINTENANCE AGREEMENT	3

FIGURES

- Figure 1 - Ohio Turnpike Westbound
- Figure 2 - Ohio Turnpike Eastbound
- Figure 3 - Interstate 76
- Figure 4 - Road Route Overview
- Figure 5 - Transportation Plan for Railed Material

1.0 PROJECT BACKGROUND

Clean Energy Future – Lordstown (CEFL) is in the process of developing the Lordstown Energy Center (LEC) in Lordstown, Trumbull County, Ohio. The facility will be a new natural gas-fired combined cycle electric generating plant with an expected 800 megawatts of generating capacity. The facility will be situated on approximately 15 acres of land located on the south side of Henn Parkway, which is part of the Henn Parkway Industrial Park. CEFL has retained Siemens as the Engineering, Procurement, and Construction (EPC) Contractor for building and operating the facility. Construction on the facility began in the spring of 2016 by Kokosing, who has been retained as the General Contractor.

Beginning with the initial site work and continuing through the construction of the facility, traffic will increase in the area and will include oversized loads on occasion. This Traffic Management Plan was prepared to meet the requirements of the Ohio Power Siting Board (OPSB) and to be used for information for Trumbull County and for the Village of Lordstown.

2.0 TRAFFIC EXPECTATIONS

Most of the traffic going in and out of the facility will be normal vehicular traffic and semi- trucks providing material and supplies. The initial traffic will include equipment for tree removal and grubbing in preparation for site activities. Initial loads into the facility will include construction equipment and gravel in preparation for initial grading and construction of the laydown area, just to the south of the proposed facility.

3.0 ROAD ACCESS

Due to the proximity of two major interstates (Interstate 76 and Interstate 80-Ohio Turnpike), the majority of the traffic, particularly oversized and heavy loads, will utilize these roads. Once off of the interstates, access to the facility will be on County Roads and Village Roads.

3.1 Local Coordination

Coordination efforts have been initiated with the Village of Lordstown, Trumbull County Engineers office, and the Mahoning County Engineers office. The Village of Lordstown defers to the Trumbull County Engineers office for road use agreements; therefore, all road agreements in Trumbull County will be through the Trumbull County Engineers office. The Mahoning County Engineers office said that no agreements are necessary for travel on the proposed County Road (Bailey Road) since it met heavy traffic criteria.

3.2 Heavy Haul/Wide Load Permits

When Heavy Haul/Wide Load permits are required for State and Interstate travel, corresponding permits will also need to be obtained through the Mahoning County Engineer. The permits will require surety bonding and can be done under a blanket agreement. Heavy Haul/Wide Load permits for the roads in the Village of Lordstown will be covered under a road use agreement described in Section 5.0. A copy of the required application for Mahoning County is presented in Attachment A.

3.3 Construction Access

Construction access to the site will be off of Henn Parkway and State Route 45. A construction entrance will be installed near the northwest corner of the site which will be converted into a permanent entrance once construction activities are completed. A second construction entrance will be installed in the northeast corner of the site into the Henn Parkway cul-de-sac. This entrance will mostly be used for large loads and as an emergency access. This entrance will also be converted into a permanent emergency access entrance after construction activities have been completed. A third entrance will be installed in the southwest corner of the site for access from the parking lot and temporary storage site of Parcel 8. Attachment B presents the three access points which will be utilized for construction and final site access to the Site.

3.4 Proposed Road Routes

Ohio Turnpike Westbound: Vehicles will exit the Ohio Turnpike at Exit 216 and turn right onto Hallock-Young Road (County Road) and travel 0.6 miles to State Route 45 (Tod Avenue). Traffic will then turn left (north) onto State Route 45 for 0.45 miles before turning right (east) onto Henn Parkway. Traffic may utilize the entire 0.38 mile stretch of Henn Parkway for site access.

Traffic returning to the Ohio Turnpike Westbound will take the same route back (Henn Parkway, left onto State Route 45, right onto Hallock –Young Road); however, will remain on Hallock-Young Road for approximately 2 miles and cross over Ellsworth Bailey Road to the Turnpike ramp. Figure 1 presents the route for Ohio Turnpike Westbound traffic.

Ohio Turnpike Eastbound: Traffic will exit the Turnpike at Exit 215. At the end of the exit ramp, traffic will cross Ellsworth Bailey Road and get onto Hallock-Young Road. Traffic will travel approximately 2 miles to State Route 45. Traffic will then turn left (north) onto State Route 45 for 0.45 miles before turning right (east) onto Henn Parkway. Traffic may utilize the entire 0.38 mile stretch of Henn Parkway for site access.

Traffic returning to Ohio Turnpike Eastbound will take the same route back (Henn Parkway, left onto State Route 45, right onto Hallock –Young Road), but will enter the eastbound entrance ramp approximately 0.6 miles after turning left off Hallock-Young Road. Figure 2 presents the route for Ohio Turnpike Westbound traffic.

Interstate 76 (Eastbound and Westbound): Traffic will exit at Interstate Exit 57 and head north on Ellsworth Bailey Road. Traffic will travel north approximately 3 miles (1.9 miles in Mahoning County and 1.1 miles in Trumbull County) and turn right (east) onto Hallock- Young Road. Traffic will travel approximately 2 miles to State Route 45. Traffic will then turn left (north) onto State Route 45 for 0.45 miles before turning right (east) onto Henn Parkway. Traffic may utilize the entire 0.38 mile stretch of Henn Parkway for site access.

Returning traffic will use the same route to return to the eastbound and westbound ramps to Interstate 76 (Henn Parkway, left onto State Route 45, right onto Hallock –Young Road), left onto Ellsworth Bailey Road. Figure 3 presents the route for Interstate 76.

Figure 4 presents a graphical summary of all the proposed routes.

4.0 RAIL ACCESS

Activities associated with the above-ground construction of the facility will require the utilization of rail transportation for larger equipment. The power generation facility is located near two major rail systems; CSX Transportation, Inc. (CSX) and Norfolk-Southern Corporation (NS). Both of these carriers utilize rail siding facilities near the facility, one at the GM Plant (2.4 miles northwest) and the other at the Ohio Commerce Park (4.8 miles north-northwest). Shipments brought to these rail siding facilities will be loaded on trucks and shipped under appropriate local and ODOT permits on State Route 45 to the facility. Figure 5 shows the local rail lines, the location of the rail siding facilities, and the proposed road route that will be utilized for shipment from the siding facilities to the power generation facility.

5.0 ROAD USE MAINTENANCE AGREEMENT



A Memorandum of Understanding (MOU) has been developed and executed between Clean Energy Future – Lordstown and Trumbull County for use of the Village roads. The Village and the County have an agreement that road use agreements will be initiated and completed by the County. A copy of the executed agreement will be provided to the OPSB and all contractors and subcontractors that will be working at the facility.

FIGURES

Aerial photograph provided by ESRI's ArcGIS Online World Imagery map service (© 2013 ESRI and its data suppliers).



Legend

-  Travel Route
-  Project Location



TETRA TECH

OHIO TURNPIKE WESTBOUND
CLEAN ENERGY FUTURE - LORDSTOWN

WORLEY PARSONS
TRUMBULL COUNTY, OHIO

DRAWN BY: S. PAXTON 02/11/16
CHECKED BY: L. DRANE 02/11/16
APPROVED BY:

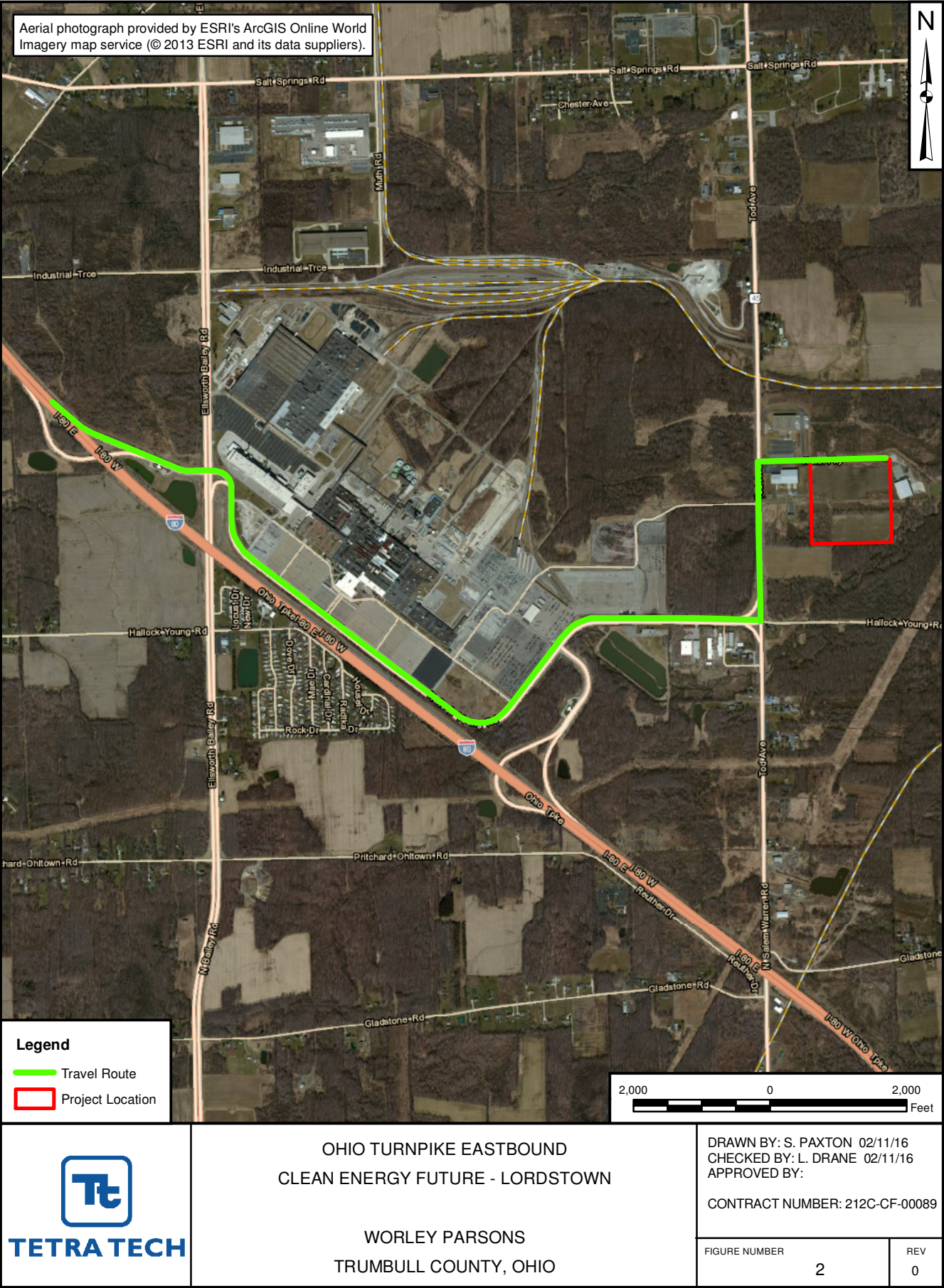
CONTRACT NUMBER: 212C-CF-00089

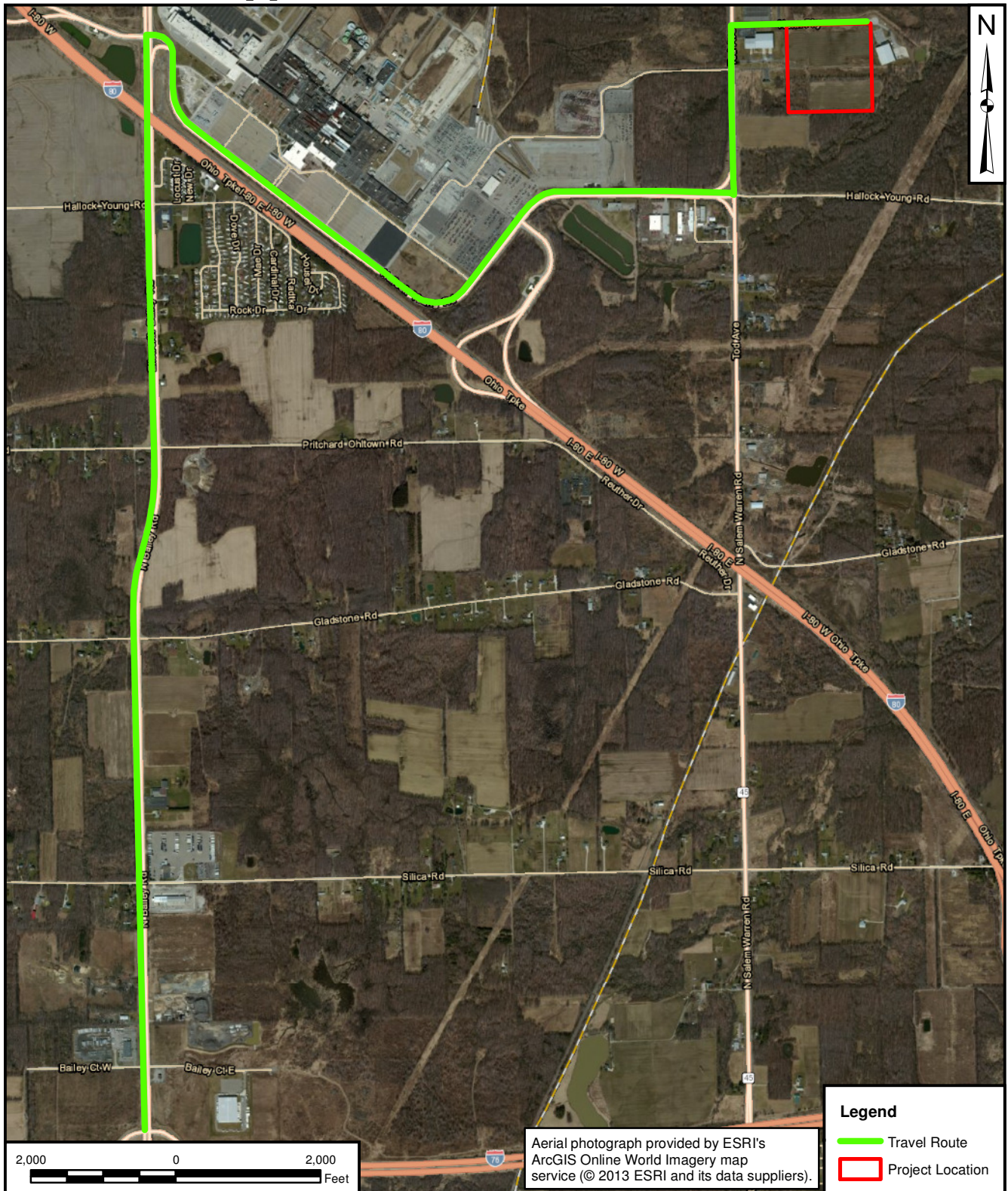
FIGURE NUMBER


1

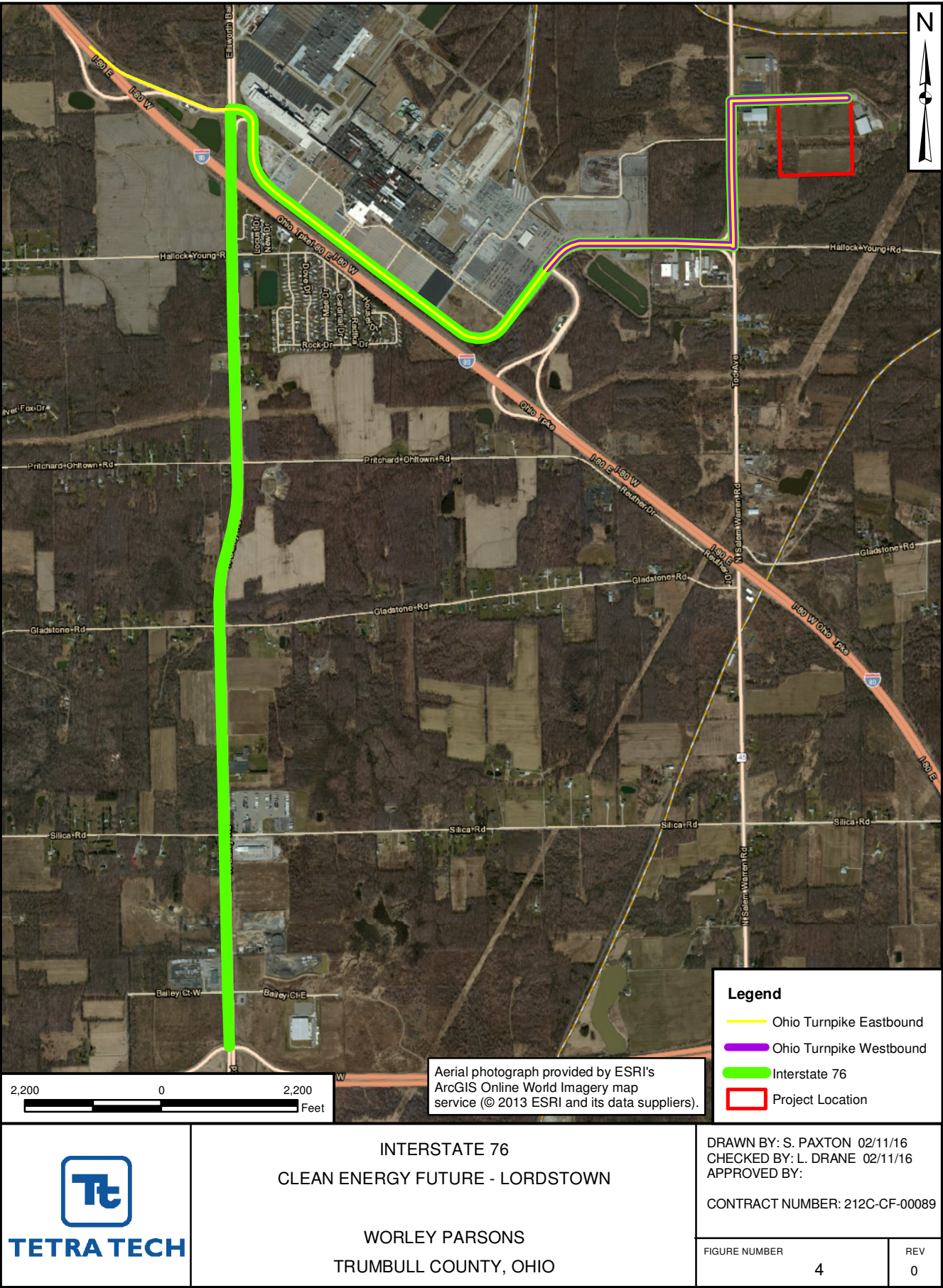
REV

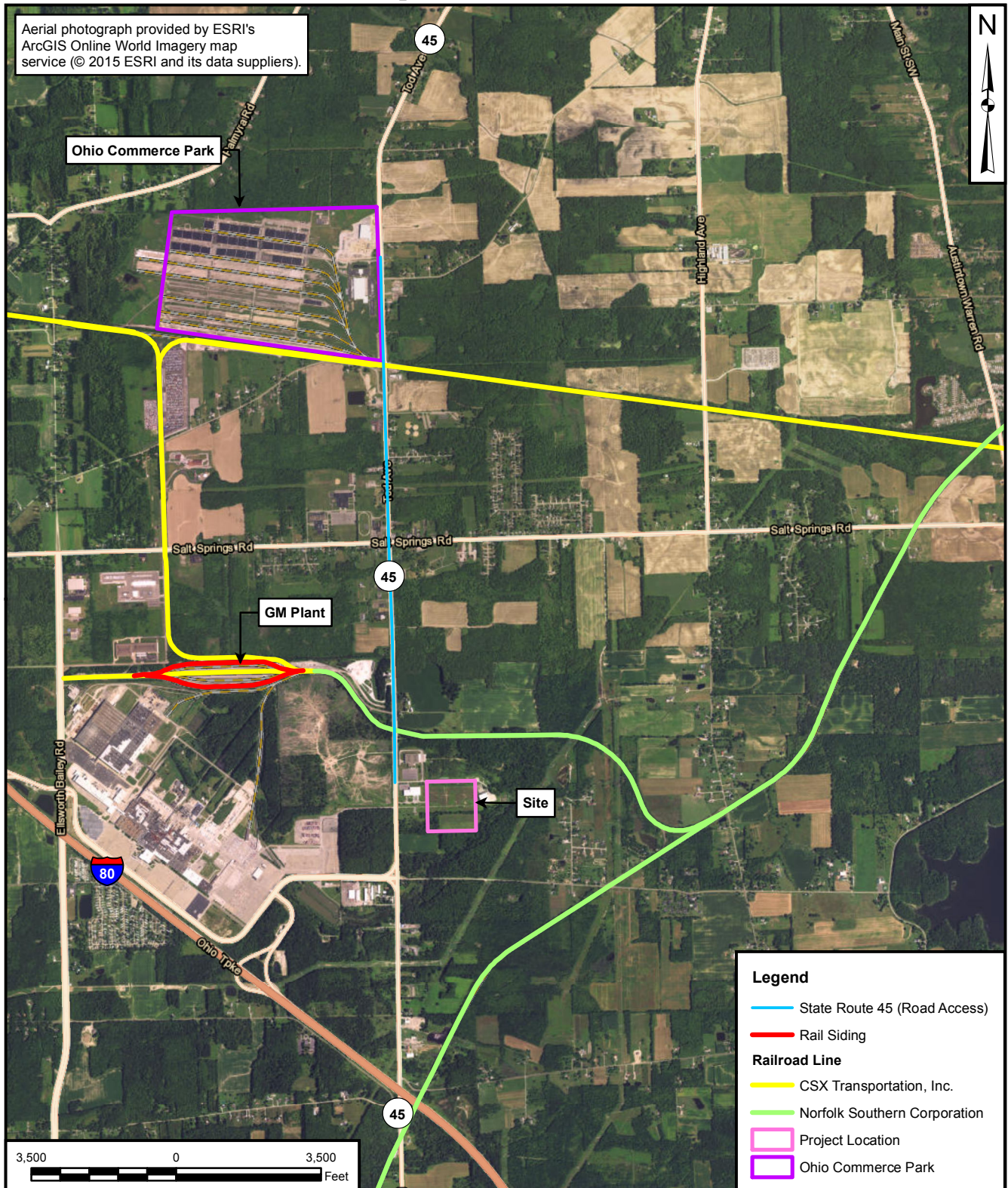
0





 <p>TETRA TECH</p>	<p align="center">INTERSTATE 76</p> <p align="center">CLEAN ENERGY FUTURE - LORDSTOWN</p> <p align="center">WORLEY PARSONS</p> <p align="center">TRUMBULL COUNTY, OHIO</p>	<p>DRAWN BY: S. PAXTON 02/11/16</p> <p>CHECKED BY: L. DRANE 02/11/16</p> <p>APPROVED BY:</p> <p>CONTRACT NUMBER: 212C-CF-00089</p>	
		<p>FIGURE NUMBER</p> <p align="center">3</p>	<p>REV</p> <p align="center">0</p>





TRANSPORTATION PLAN FOR RAILED MATERIAL
CLEAN ENERGY CENTER - LORDSTOWN

SIEMENS ENERGY
TRUMBULL COUNTY, OHIO

DRAWN BY: S. PAXTON 09/26/16
CHECKED BY: L. DRANE 09/26/16
APPROVED BY:

CONTRACT NUMBER: 212C-CF-00089

FIGURE NUMBER

5

REV

0

This foregoing document was electronically filed with the Public Utilities

Commission of Ohio Docketing Information System on

10/11/2016 10:45:38 AM

in

Case No(s). 14-2322-EL-BGN, 16-0494-EL-BGA

Summary: Correspondence of Clean Energy Future-Lordstown, LLC in Compliance with Condition No. 22 electronically filed by Teresa Orahod on behalf of Sally W. Bloomfield