

**HANGING ROCK 138KV TRANSMISSION LINE PROJECT, LAWRENCE AND SCIOTO
COUNTIES, OHIO**

Appendix A Figures

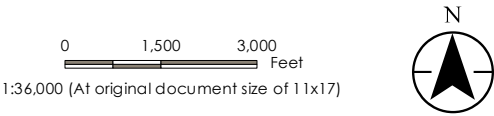
A.1 FIGURE 1 – PROJECT LOCATION MAP



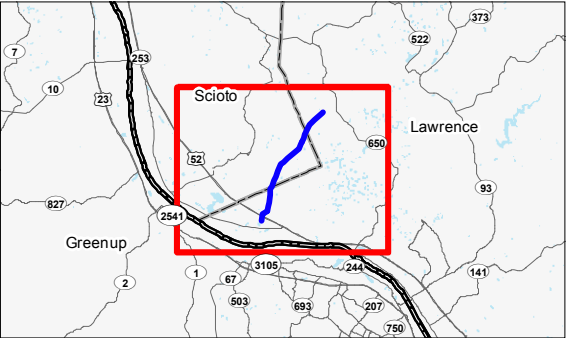
Figure No.
1
Title
Project Location Map

Client/Project
American Electric Power
Hanging Rock 138kV Transmission Line Project

Project Location
USGS Quad - Greenup and Ironton
Lawrence and Scioto
Counties, OH
193704584
Prepared by JD on 2016-07-11
Technical Review by MP on 2016-07-11
Independent Review by MK on 2016-07-21



- Legend
- Hanging Rock 138kV Transmission Line
 - Substation
 - Project Area (Proposed Access Roads and Pole Workspaces)



- Notes
- Coordinate System: NAD 1983 StatePlane Ohio South FIPS 3402 Feet
 - Data Sources Include: Stantec, AEP, NADS, USGS
 - Background: USGS 7.5' Topographic Quadrangles



**HANGING ROCK 138KV TRANSMISSION LINE PROJECT, LAWRENCE AND SCIOTO
COUNTIES, OHIO**

A.2 FIGURE 2 – WETLAND AND WATERBODY DELINEATION MAP



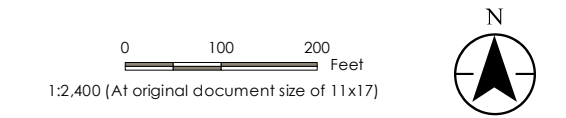
Figure No.
2

Title
Wetland and Waterbody Delineation Map

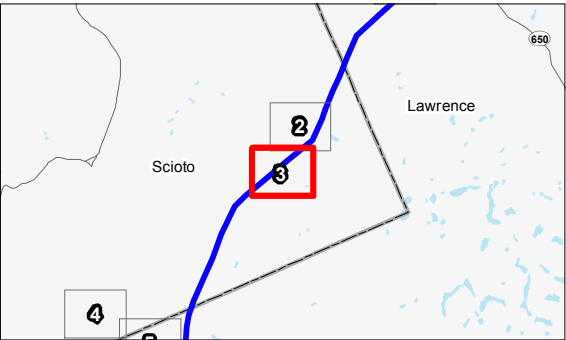
Client/Project
American Electric Power
Hanging Rock 138kV Transmission Line Project

Project Location
Lawrence and Scioto
Counties, OH

193704584
Prepared by JD on 2016-07-11
Technical Review by MP on 2016-07-11
Independent Review by CM on 2016-07-21



- Legend**
- Hanging Rock 138kV Transmission Line
 - AEP Substation
 - Existing Structures
 - Project Area
 - Study Area No Longer Part of Project
 - Access Road
 - Photo Location
 - Wetland Determination Sample Point
 - Seep/Spring
 - Field Delineated Waterway
 - Approximate Waterway
 - Upland Drainage Feature
 - Approximate Upland Drainage Feature
 - Field Delineated Wetland
 - PEM Wetland
 - Approximate Wetland
 - National Wetlands Inventory Feature
 - 100-year Flood Zone
 - 100-year Floodway



- Notes**
- Coordinate System: NAD 1983 StatePlane Ohio South FIPS 3402 Feet
 - Data Sources Include: Stantec, AEP, NADS, USFWS, USGS, FEMA
 - Orthophotography: 2015 NAIP



V:\1937\Activa\193704584\03_data\ok_cad\ok\mxd\Eco_Report\HangingRock_AEP_Frame2.mxd Revised: 2016-07-25 By: H4d0re0re



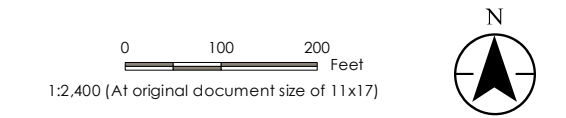
Figure No.
2

Title
**Wetland and Waterbody
Delineation Map**

Client/Project
American Electric Power
Hanging Rock 138kV Transmission Line Project

Project Location
Lawrence and Scioto
Counties, OH

193704584
Prepared by JD on 2016-07-11
Technical Review by MP on 2016-07-11
Independent Review by CM on 2016-07-21



Legend

Hanging Rock 138kV Transmission Line

AEP Substation

Existing Structures

Project Area

Study Area No Longer Part of Project

Access Road

Photo Location

Wetland Determination Sample Point

Seep/Spring

Field Delineated Waterway

Approximate Waterway

Upland Drainage Feature

Approximate Upland Drainage Feature

Field Delineated Wetland

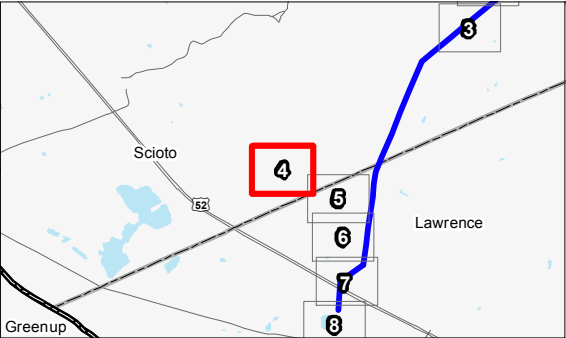
PEM Wetland

Approximate Wetland

National Wetlands Inventory Feature

100-year Flood Zone

100-year Floodway



Notes

1. Coordinate System: NAD 1983 StatePlane Ohio South FIPS 3402 Feet
2. Data Sources Include: Stantec, AEP, NADS, USFWS, USGS, FEMA
3. Orthophotography: 2015 NAIP





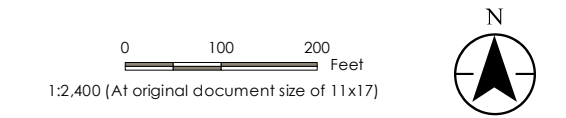
Figure No.
2

Title
Wetland and Waterbody Delineation Map

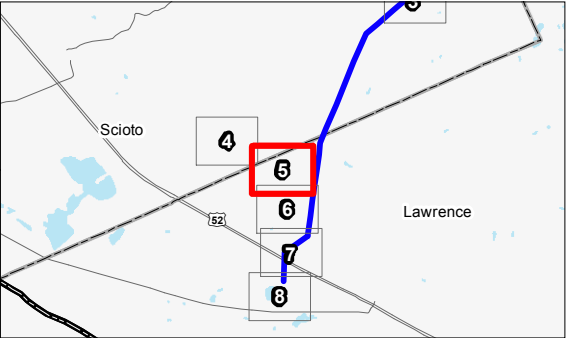
Client/Project
American Electric Power
Hanging Rock 138kV Transmission Line Project

Project Location
Lawrence and Scioto Counties, OH

193704584
Prepared by JD on 2016-07-11
Technical Review by MP on 2016-07-11
Independent Review by CM on 2016-07-21



- Legend**
- Hanging Rock 138kV Transmission Line
 - AEP Substation
 - Existing Structures
 - Project Area
 - Study Area No Longer Part of Project
 - Access Road
 - Photo Location
 - Wetland Determination Sample Point
 - Seep/Spring
 - Field Delineated Waterway
 - Approximate Waterway
 - Upland Drainage Feature
 - Approximate Upland Drainage Feature
 - Field Delineated Wetland
 - PEM Wetland
 - Approximate Wetland
 - National Wetlands Inventory Feature
 - 100-year Flood Zone
 - 100-year Floodway



Notes

- Coordinate System: NAD 1983 StatePlane Ohio South FIPS 3402 Feet
- Data Sources Include: Stantec, AEP, NADS, USFWS, USGS, FEMA
- Orthophotography: 2015 NAIP



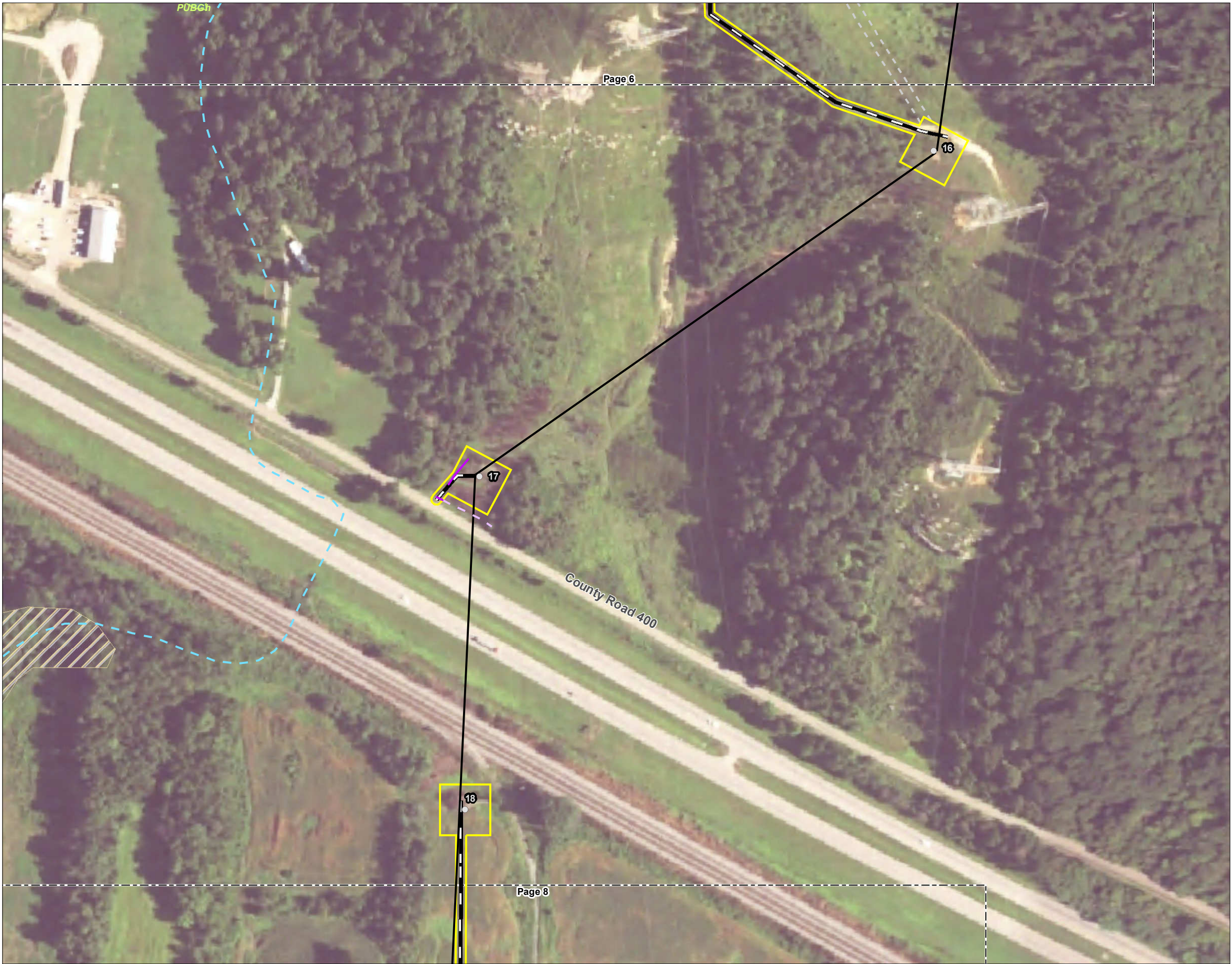


Figure No.
2

Title
Wetland and Waterbody Delineation Map

Client/Project
American Electric Power
Hanging Rock 138kV Transmission Line Project

Project Location
Lawrence and Scioto
Counties, OH

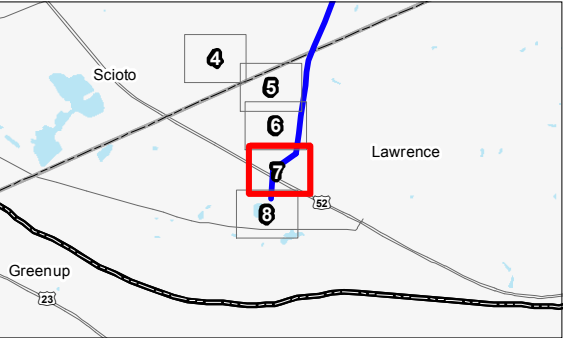
193704584
Prepared by JD on 2016-07-11
Technical Review by MP on 2016-07-11
Independent Review by CM on 2016-07-21

0 100 200 Feet
1:2,400 (At original document size of 11x17)

N

Legend

- Hanging Rock 138kV Transmission Line
- AEP Substation
- Existing Structures
- Project Area
- Study Area No Longer Part of Project
- Access Road
- Photo Location
- Wetland Determination Sample Point
- Seep/Spring
- Field Delineated Waterway
- Approximate Waterway
- Upland Drainage Feature
- Approximate Upland Drainage Feature
- Field Delineated Wetland
- PEM Wetland
- Approximate Wetland
- National Wetlands Inventory Feature
- 100-year Flood Zone
- 100-year Floodway



Notes

- Coordinate System: NAD 1983 StatePlane Ohio South FIPS 3402 Feet
- Data Sources Include: Stantec, AEP, NADS, USFWS, USGS, FEMA
- Orthophotography: 2015 NAIP



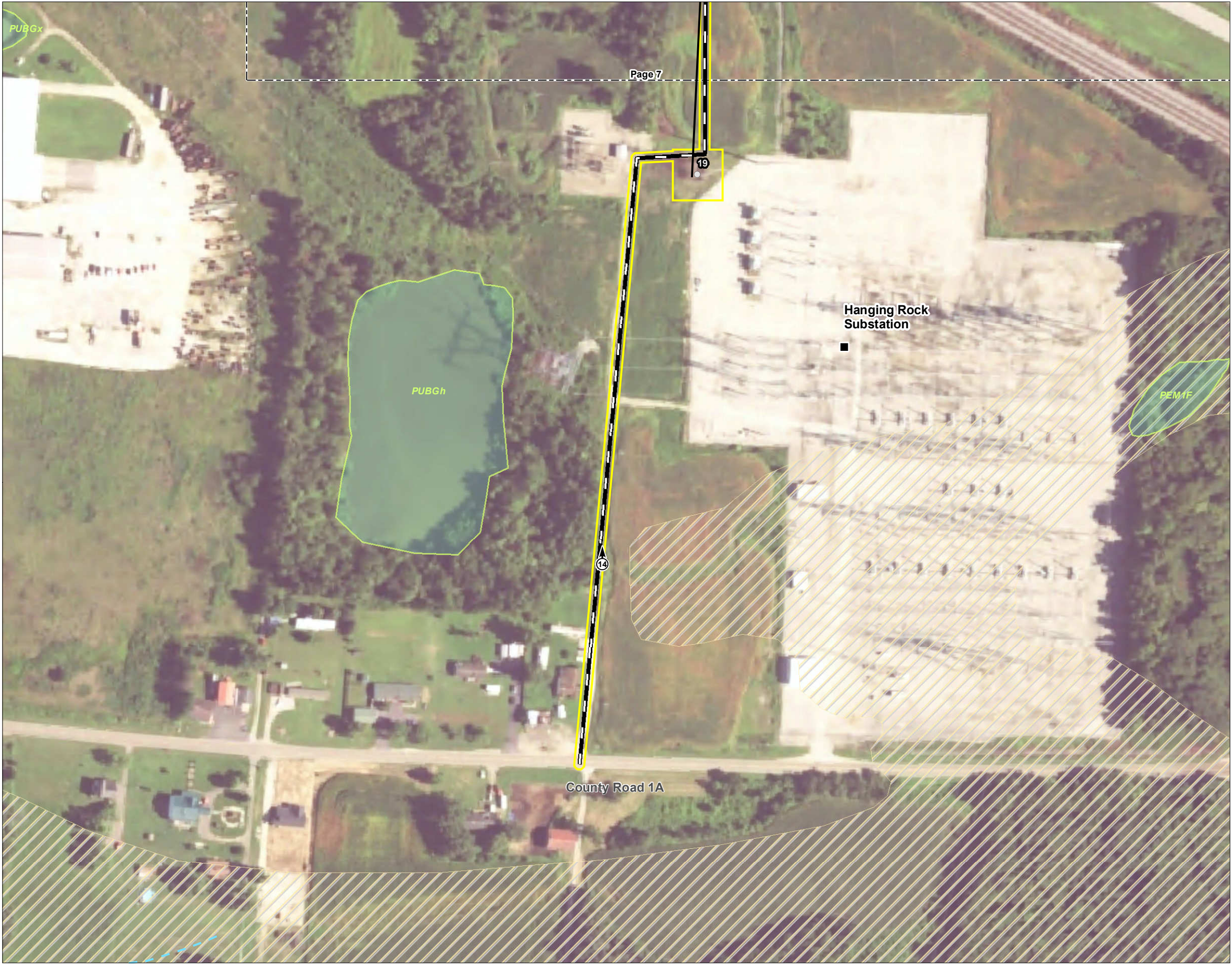


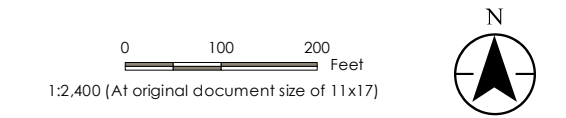
Figure No.
2

Title
**Wetland and Waterbody
Delineation Map**

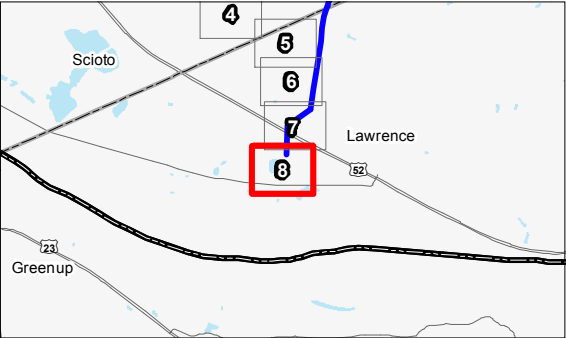
Client/Project
American Electric Power
Hanging Rock 138kV Transmission Line Project

Project Location
Lawrence and Scioto
Counties, OH

193704584
Prepared by JD on 2016-07-11
Technical Review by MP on 2016-07-11
Independent Review by CM on 2016-07-21



- Legend**
- Hanging Rock 138kV Transmission Line
 - AEP Substation
 - Existing Structures
 - Project Area
 - Study Area No Longer Part of Project
 - Access Road
 - Photo Location
 - Wetland Determination Sample Point
 - Seep/Spring
 - Field Delineated Waterway
 - Approximate Waterway
 - Upland Drainage Feature
 - Approximate Upland Drainage Feature
 - Field Delineated Wetland
 - PEM Wetland
 - Approximate Wetland
 - National Wetlands Inventory Feature
 - 100-year Flood Zone
 - 100-year Floodway



Notes

- Coordinate System: NAD 1983 StatePlane Ohio South FIPS 3402 Feet
- Data Sources Include: Stantec, AEP, NADS, USFWS, USGS, FEMA
- Orthophotography: 2015 NAIP



This foregoing document was electronically filed with the Public Utilities

Commission of Ohio Docketing Information System on

7/29/2016 2:42:17 PM

in

Case No(s). 16-1527-EL-BLN

Summary: Letter of Notification Part 9 of 13 electronically filed by Mrs. Erin C Miller on behalf of AEP Ohio Transmission Company