



COLUMBUS | CLEVELAND
CINCINNATI-DAYTON
MARIETTA

BRICKER & ECKLER LLP
100 South Third Street
Columbus, OH 43215-4291
MAIN: 614.227.2300
FAX: 614.227.2390

www.bricker.com
info@bricker.com

Sally W. Bloomfield
614.227.2368
sbloomfield@bricker.com

May 5, 2016

Via Electronic Filing

Ms. Barcy McNeal
Administration/Docketing
Public Utilities Commission of Ohio
180 East Broad Street, 11th Floor
Columbus, OH 43215-3793

**Re: Clean Energy Future-Lordstown, LLC,
OPSB Case No. 14-2322-EL-BGN**

Dear Ms. McNeal:

The September 17, 2015, Opinion, Order, and Certificate ("Certificate") approving Clean Energy Future-Lordstown, LLC ("CEFL") Certificate of Environmental Compatibility and Public Need to Construct the Lordstown Energy Center established a set of conditions as part of the Certificate.

Within this set of conditions, **Condition No. 7** requires that:

At least 30 days prior to the preconstruction conference, the Applicant shall submit to Staff, for review, one set of detailed engineering drawings of the final project design, including the facility, temporary and permanent access roads, any crane routes, construction staging areas, and any other associated facilities and access points so that Staff can determine that the final project design is in compliance with the terms of the certificate. The final project layout shall be provided in hard copy and as geographically referenced electronic data. The final design shall include all requirements of the certificate and references at the locations where the Applicant and/or its contractors must adhere to a specific requirement in order to comply with the certificate.

Attached is a copy of the site layout and engineering drawings for the transmission line and switchyard, which were provided to the OPSB Staff on April 2, 2016. The GIS shape files were submitted to Staff on March 29, 2016. Thus, this letter is to inform the OPSB Staff that CEFL is in compliance with **Condition No. 7** for the transmission line and switchyard.

If you have any questions please call at the number listed above.

Sincerely,

Sally W. Bloomfield

Attachment

cc: Jon Whitis (w/Attachment)
Grant Zeto (w/Attachment)

March 28, 2016

Mr. Patrick Donlon
Director of Rates and Analysis
Ohio Power Siting Board
180 East Broad Street
Columbus, Ohio 43215

**Re: Pre-Construction Conference Request
Site Clearing, Grading, Civil and Electrical Construction
Lordstown Energy Center, Village of Lordstown, Trumbull County, Ohio – Case No.
14-2322-EL-BGN
M.J. Electric Project #61049300**

Dear Mr. Donlon:

M.J. Electric, LLC (MJ Electric) on behalf of the Lordstown Energy Center (LEC) is requesting approval to begin site civil and electrical construction activities for the two 345 kilovolt (kV) switchyards and generator lead line for the LEC project. Activities will include clearing, grading, civil and electrical above and below grade construction. Site civil construction activities performed by MJ Electric will be limited to the interconnection switchyard and generator lead line only. Site civil construction activities for the collector switchyard will be performed by contractors associated with the LEC plant facilities.

Upon completion of civil construction activities at all three locations, MJ Electric will begin the electrical work for below and above grade construction at all three facilities: the 345 kV interconnection switchyard, the 345 kV generator lead line, and the 345 kV collector switchyard.

All interconnect yard activities will be conducted within the approximate 8 acre substation project site off of Goldner Lane and includes construction staging areas incorporated within the fenced area of the substation footprint. The generator lead line will include approximately 8 acres of transmission line right-of-way (ROW) for approximately 3750 feet of transmission line. Staging of materials for the lead line will be incorporated along the ROW adjacent to each structure foundation. The collector yard activities are located within the generator facility location map and includes construction staging areas incorporated within the fenced area of the substation footprint.

Attachment A presents the overall site layout showing geographical referenced locations in state plane coordinates, electrical general arrangement plans and construction and permanent access routes for the project.

The site civil construction activities performed by MJ Electric at the interconnect yard and generator lead line will include the site clearing, topsoil removal and storage, grading, storm water erosion and sedimentation control, and dewatering activities. Access roads will also be installed along the generator lead line route for future, long-term maintenance activities.

Patrick Donlon
Page 2
March 28, 2016

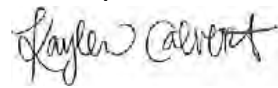
The limits of disturbance will be indicated in the field through the use of flagging or marking by a properly licensed surveyor for civil construction. Any aquatic resources that are not permitted will be flagged and protected with the use of Erosion and Sedimentation Control practices. No clearing work in streams is proposed; however, several wetlands were identified on the project site. These wetlands have been permitted through the Ohio EPA and the U.S. Army Corps of Engineers. Copies of the permits are presented in Attachment B. Development of a Storm Water Pollution Prevention Plan (SWPPP) is currently in process and will be completed prior to construction. A notice of intent (NOI) will also be submitted prior to the state of construction activities. Both the SWPPP and NOI documents will be available on-site during construction.

Following civil construction, MJ Electric will begin below grade electrical construction. This will include, but not be limited to, drilled pier shaft foundations, slab on-grade foundations, raceway and grounding. Upon substantial completion of below grade construction MJ Electric will begin above grade electrical construction including: substation steel structures, transmission line steel pole structures, wire, high voltage electrical equipment, electrical bus system, security fencing, and security equipment meeting NERC CIP requirements. All facilities will meet the design requirements per First Energy standards and best utility practices as outlined in the specifications issued for the two switchyards and interconnecting generator lead line.

The LEC project will utilize existing roads to access the construction site. Hauling routes are shown in Attachment A. All site construction will be off the road right-of-way and no road closures are anticipated at this time. All applicable permits for construction will be acquired prior to commencement. All civil construction activity inspections and follow-up reporting will comply with the SWPPP developed for the project.

The MJ Electric and LEC Team looks forward to the pre-construction conference to meet the timeline associated with construction activities for the project. Thank you in advance for your assistance with this request.

Sincerely,



For:
Brandy Smart
Vice President – Environmental Services

BS/aw
cc: Erik Stenvig-MJ Electric

Attachment A

[illegible]

1A	RE-ISSUED FOR PERMITTING	DCB	JPM	JPM	03/28/16
-	ISSUED FOR PERMITTING	DCB	JPM	JPM	03/24/16
REV.	REVISION DESCRIPTION	DRAWN	CHECKED	APPROVED & DATE	

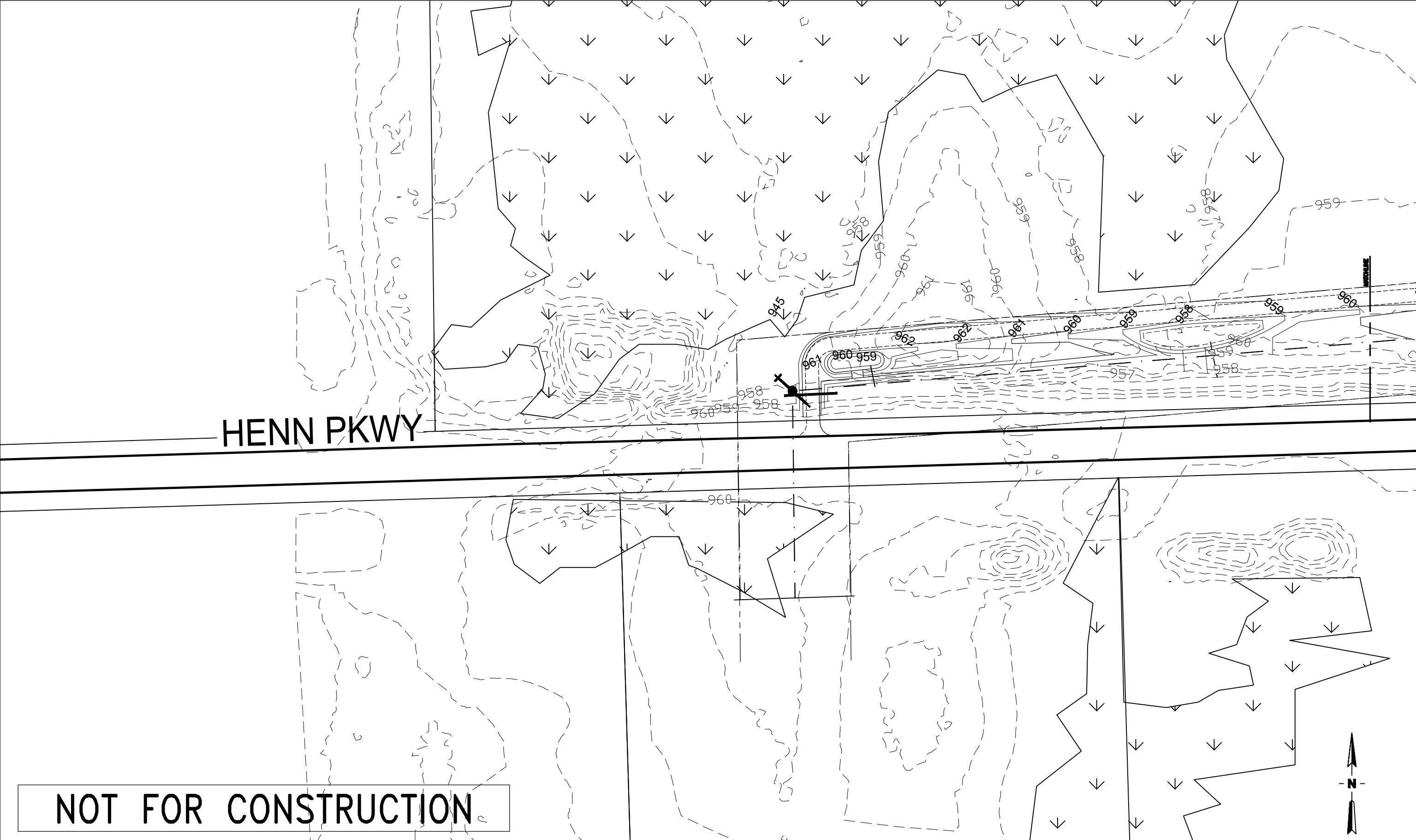


2908 Marketplace Drive
Fitchburg, Wi. 53719
608-906-7800 Direct
608-906-7949 Fax
www.realtimeutilityengineers.com

ISSUE FOR: & DATE	ENGINEER:	RUE	DATE 3/16
REVIEW	DESIGNER:	RUE	
CONSTRUCTION	DRAWN:	RUE	
AS BUILT	CHECKED:		
RECORD	APPROVED:		

LORDSTOWN SUBSTATION AND GENERATOR LEAD
PRELIMINARY GRADING PLAN
OVERALL PROJECT PLAN

SCALE: 1" = 300'	DWG NO.	SHEET	REV. 1 A
------------------	---------	-------	----------



NOT FOR CONSTRUCTION

—	ISSUED FOR PERMITTING	DCB	JPM	JPM	03/22/16
REV.	REVISION DESCRIPTION	DRAWN	CHECKED	APPROVED & DATE	

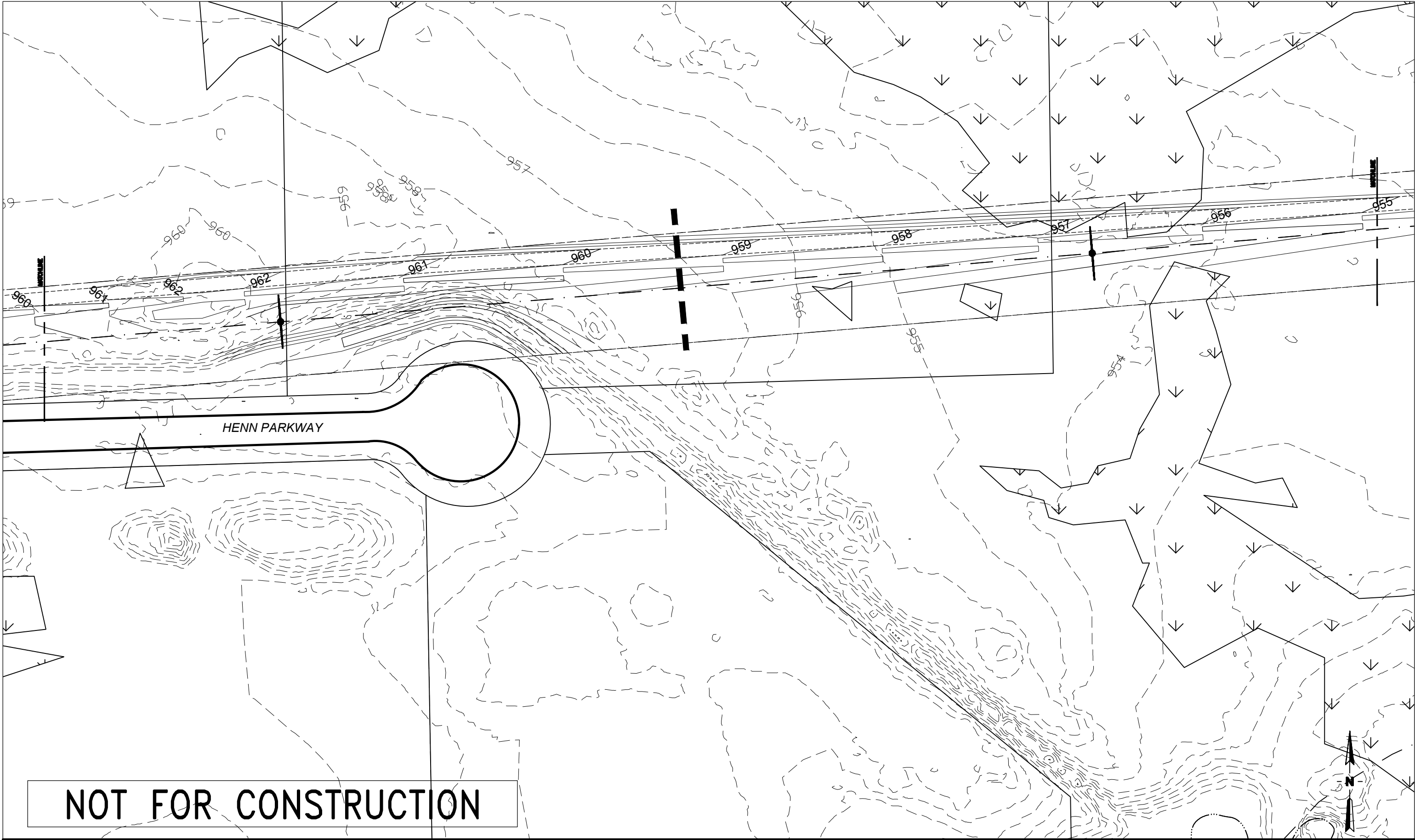


REALTIME
Utility Engineers
INCORPORATED
A QUANTA SERVICES COMPANY


2908 Marketplace Drive
Fitchburg, Wi. 53719
608-906-7800 Direct
608-906-7949 Fax
www.realtimeutilityengineers.com

ISSUE FOR: & DATE	ENGINEER:	RUE	
REVIEW	DESIGNER:	RUE	
CONSTRUCTION	DRAWN:	RUE	DATE
AS BUILT	CHECKED:		3/16
RECORD	APPROVED:		

LORDSTOWN SUBSTATION AND GENERATOR LEAD PRELIMINARY GRADING PLAN PLAN 1 OF 4			
SCALE: 1" = 80'	DWG NO.	SHEET	REV. —



—	ISSUED FOR PERMITTING	DCB	JPM	JPM	03/22/16
REV.	REVISION DESCRIPTION	DRAWN	CHECKED	APPROVED & DATE	



REALTIME
Utility Engineers
INCORPORATED
A QUANTA SERVICES COMPANY

2908 Marketplace Drive
Fitchburg, Wi. 53719
608-906-7800 Direct
608-906-7949 Fax
www.realtimeutilityengineers.com

ISSUE FOR: & DATE	ENGINEER:	RUE		LORDSTOWN SUBSTATION AND GENERATOR LEAD PRELIMINARY GRADING PLAN PLAN 2 OF 4		
REVIEW	DESIGNER:	RUE				
CONSTRUCTION	DRAWN:	RUE	DATE			
AS BUILT	CHECKED:		3/16			
RECORD	APPROVED:					
SCALE: 1" = 80'				DWG NO.	SHEET	REV. —

WATERSHED

TRIBUTARY TO MUD CREEK

45-141120

NOT FOR CONSTRUCTION

The map shows a topographic representation of a watershed area. Contour lines are drawn at 1-foot intervals, with labels every 10 feet (940, 950, 960, 970, 980, 990, 1000). A stream, labeled 'WATERSHED', flows from the top left towards the bottom right. A proposed road, shown as a dashed line, runs horizontally across the middle of the map. The road is labeled 'WATERSHED' at its right end. A north arrow is located in the bottom right corner, and a scale bar is in the bottom left corner. The map is titled 'WATERSHED' and 'TRIBUTARY TO MUD CREEK'. A large number '45-141120' is printed in the center. A box in the bottom left corner contains the text 'NOT FOR CONSTRUCTION'.

This is a technical topographic map showing a tributary to Mud Creek. The map includes contour lines with elevations ranging from 947 to 955. A prominent contour line is labeled '950'. The tributary is shown as a solid line with arrows indicating flow direction. A large, bold, italicized text label 'D TRIBUTARY TO MUD CREEK' is positioned along the upper left portion of the tributary. A rectangular area is outlined in the center-right, containing a small structure and a spot elevation of 952. Another rectangular area is outlined in the lower-left, containing a small structure and a spot elevation of 952. A north arrow is located in the bottom right corner. A large, bold, black text label '45-141120' is centered in the lower half of the map. A white rectangular box with a black border is located in the bottom left corner, containing the text 'NOT FOR CONSTRUCTION' in bold, black, uppercase letters.

WATERSHED

TRIBUTARY TO MUD CREEK

45-141120

NOT FOR CONSTRUCTION

The map shows a topographic representation of a watershed area. Contour lines are drawn at 1-foot intervals, with labels every 10 feet (940, 950, 960, 970, 980, 990, 1000). A stream, labeled 'WATERSHED TRIBUTARY TO MUD CREEK', flows from the upper left towards the center. A proposed road, shown as a dashed line, runs horizontally across the middle of the map. The road has a centerline and edge lines. A north arrow is located in the upper right corner, and a scale bar is in the lower right corner. A title block in the lower left corner contains the text '45-141120' and 'NOT FOR CONSTRUCTION'.

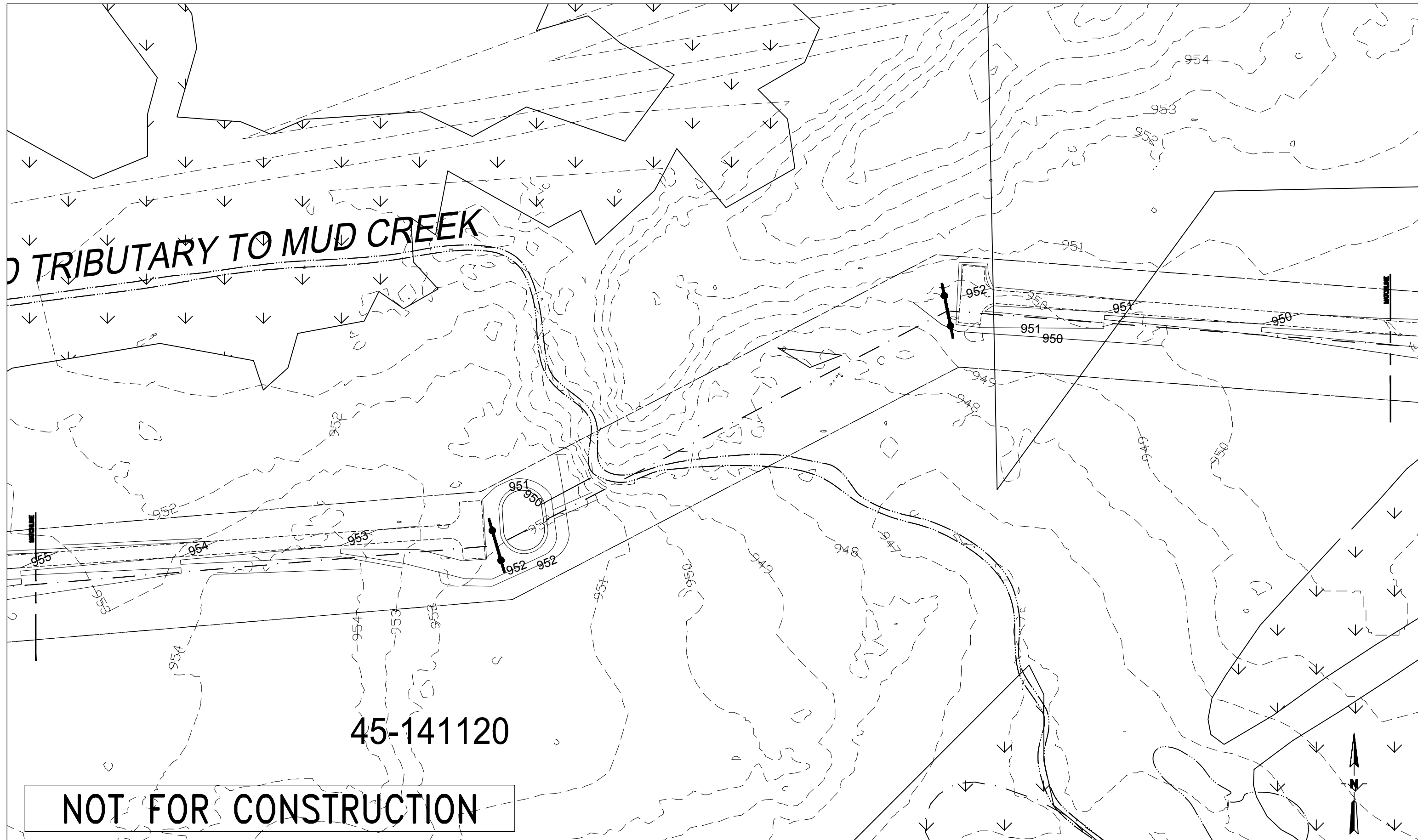
WATERSHED

TRIBUTARY TO MUD CREEK

45-141120

NOT FOR CONSTRUCTION

The map shows a topographic representation of a watershed area. Contour lines are drawn at 1-foot intervals, with labels every 10 feet (940, 950, 960, 970, 980, 990, 1000). A stream, labeled 'WATERSHED TRIBUTARY TO MUD CREEK', flows from the upper left towards the center. A proposed road, shown as a dashed line, runs horizontally across the middle of the map. The road has a centerline and edge lines. A north arrow is located in the upper right corner, and a scale bar is in the lower right corner. A title block in the lower left corner contains the text '45-141120' and 'NOT FOR CONSTRUCTION'.



This is a technical topographic map showing a tributary to Mud Creek. The map includes contour lines with elevations ranging from 947 to 955. A prominent feature is a large, irregularly shaped area labeled "D TRIBUTARY TO MUD CREEK" in bold, italicized capital letters. This area is defined by a solid line and contains several smaller, irregular shapes. A network of lines, likely representing a drainage system or a proposed infrastructure, runs through the map. A north arrow is located in the bottom right corner. A large, bold, black rectangular box at the bottom left contains the text "NOT FOR CONSTRUCTION". The map also features several spot elevations and a series of numbers (947, 948, 949, 950, 951, 952, 953, 954, 955) that likely represent specific elevation points or stationing along the main line.

A topographic map showing a tributary to Mud Creek. The map features dashed contour lines with elevations ranging from 947 to 955. A solid line represents the creek, which flows from the upper left towards the lower right. A dashed line indicates a proposed or existing path or boundary. A large, bold, italicized text label "D TRIBUTARY TO MUD CREEK" is positioned along the upper left section of the creek. In the lower left, a rectangular box contains the text "NOT FOR CONSTRUCTION". Above this box, the number "45-141120" is printed. The map also includes a north arrow in the bottom right corner and several small, unlabeled rectangular features, possibly buildings or structures, located near the creek's course.

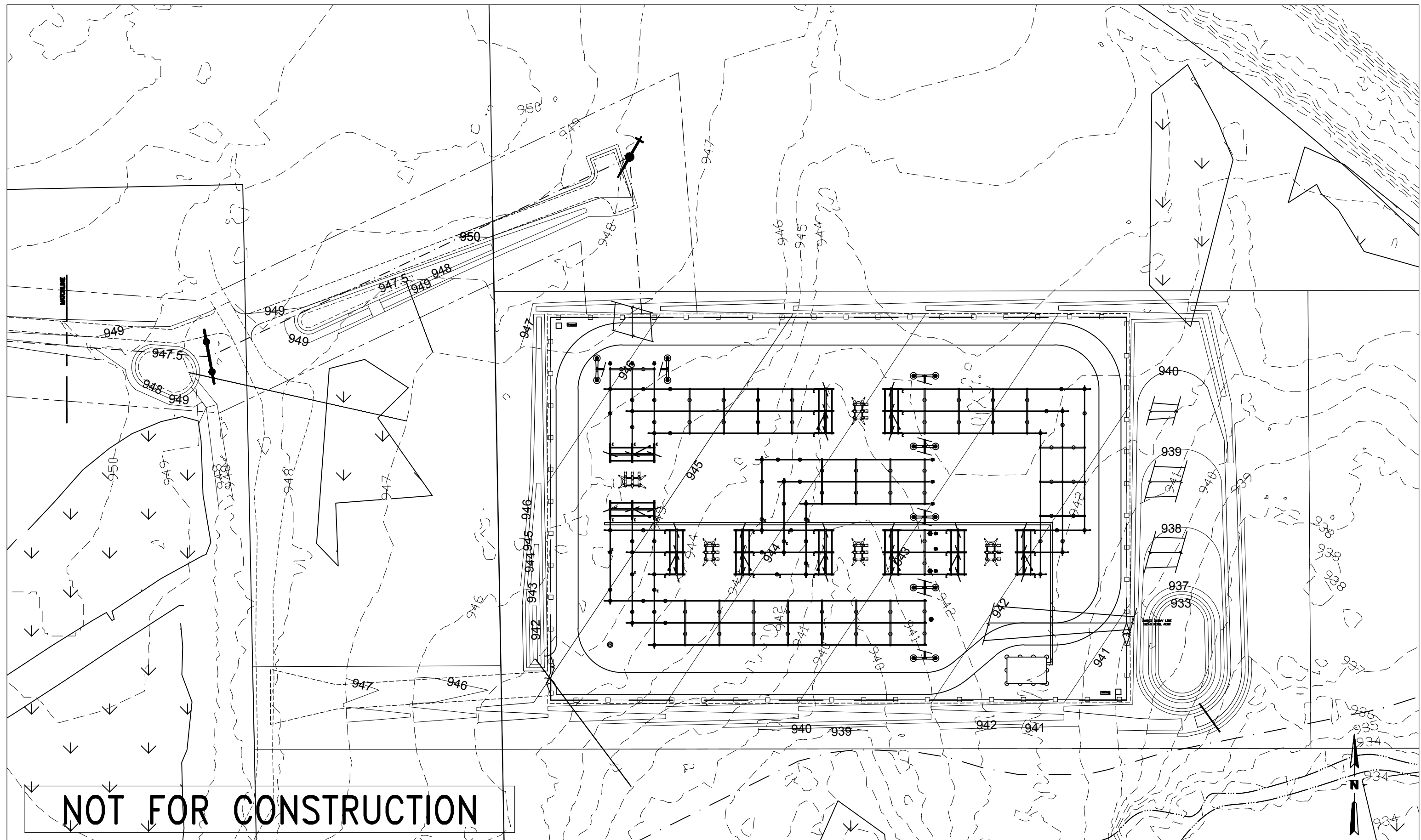
A topographic map showing a tributary to Mud Creek. The map features dashed contour lines with elevations ranging from 947 to 955. A solid line represents the creek, which flows from the upper left towards the lower right. A dashed line indicates a proposed or existing path or boundary. A large, bold, italicized text label "D TRIBUTARY TO MUD CREEK" is positioned along the upper left section of the creek. In the lower left, a rectangular box contains the text "NOT FOR CONSTRUCTION". Above this box, the number "45-141120" is printed. The map also includes a north arrow in the bottom right corner and several small, unlabeled rectangular features, possibly buildings or structures, located near the creek's course.

TRIBUTARY TO MUD CREEK

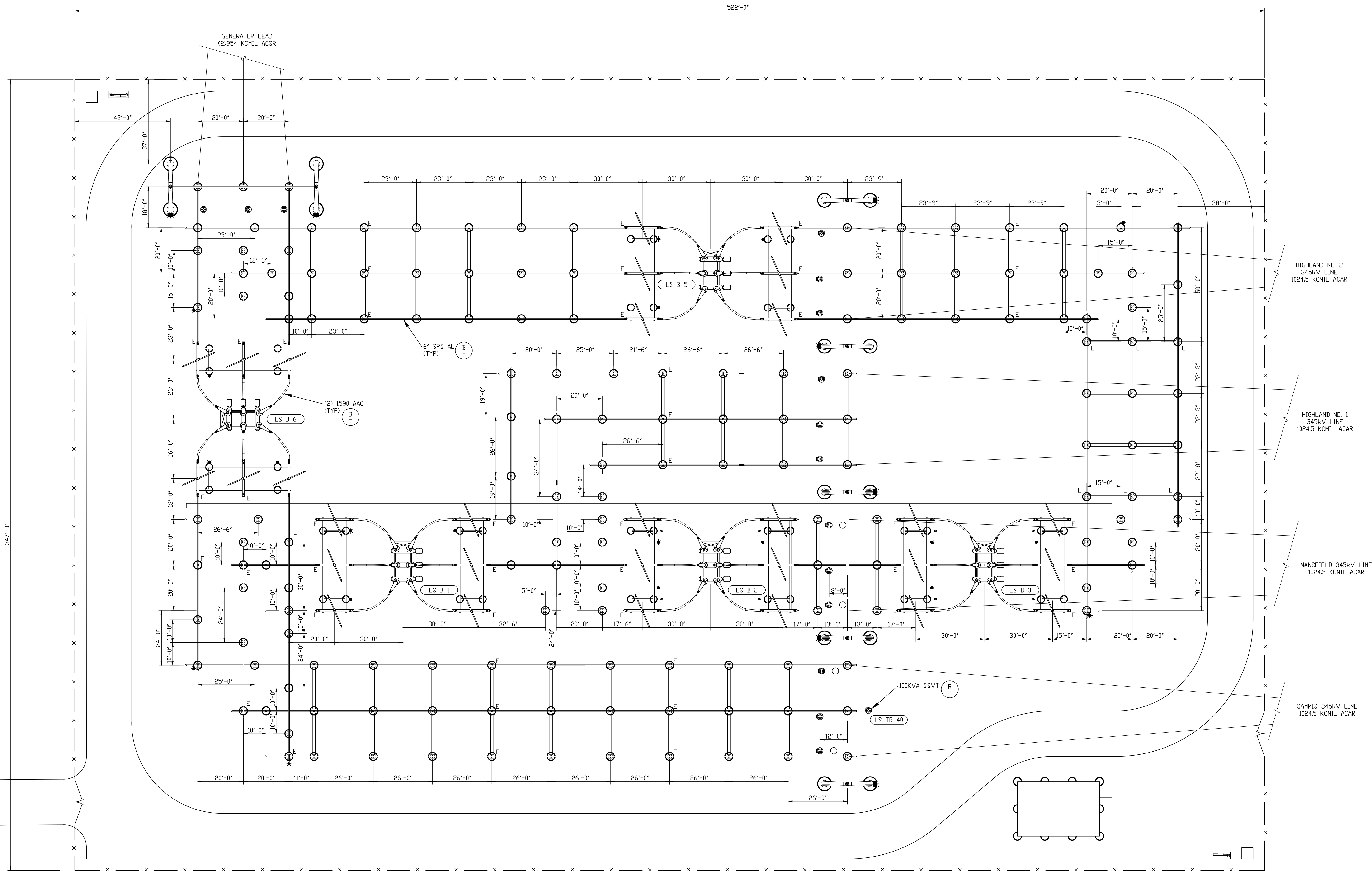
45-141120

NOT FOR CONSTRUCTION

The map shows a topographic representation of a landscape. Contour lines are drawn at 1-foot intervals, with labels every 10 feet (947, 948, 949, 950, 951, 952, 953, 954, 955). A stream, labeled 'TRIBUTARY TO MUD CREEK', flows from the upper left towards the center. A proposed road layout is shown with solid lines, including a main road and several branches. A north arrow is located in the upper right corner, and a scale bar is in the lower right corner. A title block in the lower left corner contains the text 'NOT FOR CONSTRUCTION'.



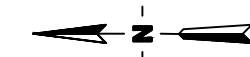
						 <div>2908 Marketplace Drive Fitchburg, Wi. 53719 608-906-7800 Direct 608-906-7949 Fax www.realtimeutilityengineers.com</div>	ISSUE FOR: & DATE	ENGINEER: RUE	<div>DATE</div> <div>3/16</div>	LORDSTOWN SUBSTATION AND GENERATOR LEAD PRELIMINARY GRADING PLAN PLAN 4 OF 4					
					REVIEW		DESIGNER: RUE								
					CONSTRUCTION		DRAWN: RUE								
							AS BUILT	CHECKED:				SCALE: 1" = 80'	DWG NO.	SHEET	REV. —
							RECORD	APPROVED:							
- ISSUED FOR PERMITTING		DCB	JPM	JPM	03/22/16										
REV.	REVISION DESCRIPTION	DRAWN	CHECKED	APPROVED & DATE											



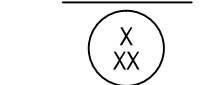
LEGEND:
X
XX
XXX X XX
MATERIAL CALL-OUT
EQUIPMENT NUMBER

PRELIMINARY

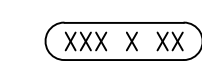
BY: RUE-JCB APP: RUE-JPM DATE: 01/12/16 USER: REVIEW	FirstEnergy Energy Delivery Technical Services	PROJECT CODE: LORDSTOWN	OPERATING COMPANY: Ohio Edison (OE)	REGION: DH-EA	AREA: -
SAP NETWORK NO: -			TITLE: INTERCONNECT STATION GENERAL ARRANGEMENT		
SAP NETWORK NO: -			REV: 1A		



LEGEND:



MATERIAL CALL-OUT



EQUIPMENT NUMBER

PRELIMINARY

1A	SUBMITTED FOR PRELIMINARY REVIEW		DCB	DCB	JPM		01/
REV.	REVISION DESCRIPTION		DRAWN	CHECKED	APPROVED	A	



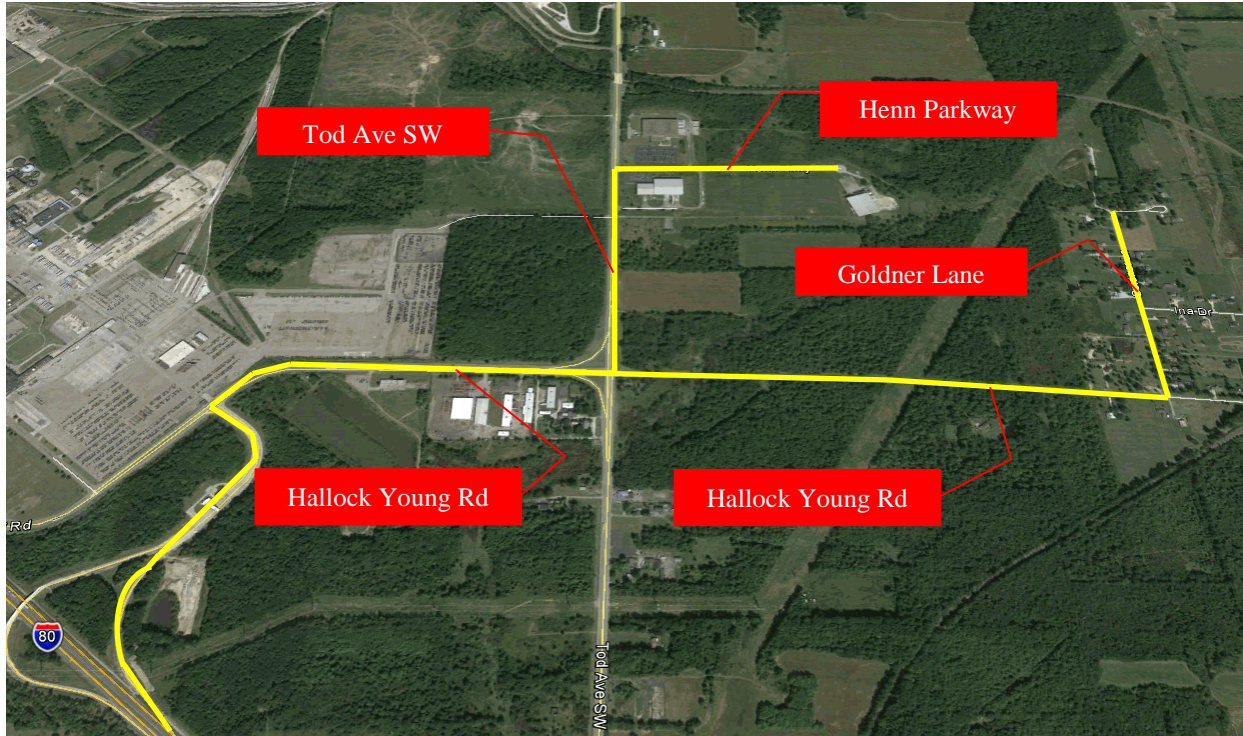
2908 Marketplace Drive
Fitchburg, Wi. 53719
608-906-7800 Direct
608-906-7949 Fax
www.realtimeutilityengineers.com

ISSUE FOR: & DATE	ENGINEER:	DCB	DATE
REVIEW	DESIGNER:	—	
CONSTRUCTION	DRAWN:	DCB	
AS BUILT	CHECKED:	JPM	
RECORD	APPROVED:		01/16

LORDSTOWN COLLECTOR STATION
GENERAL ARRANGEMENT

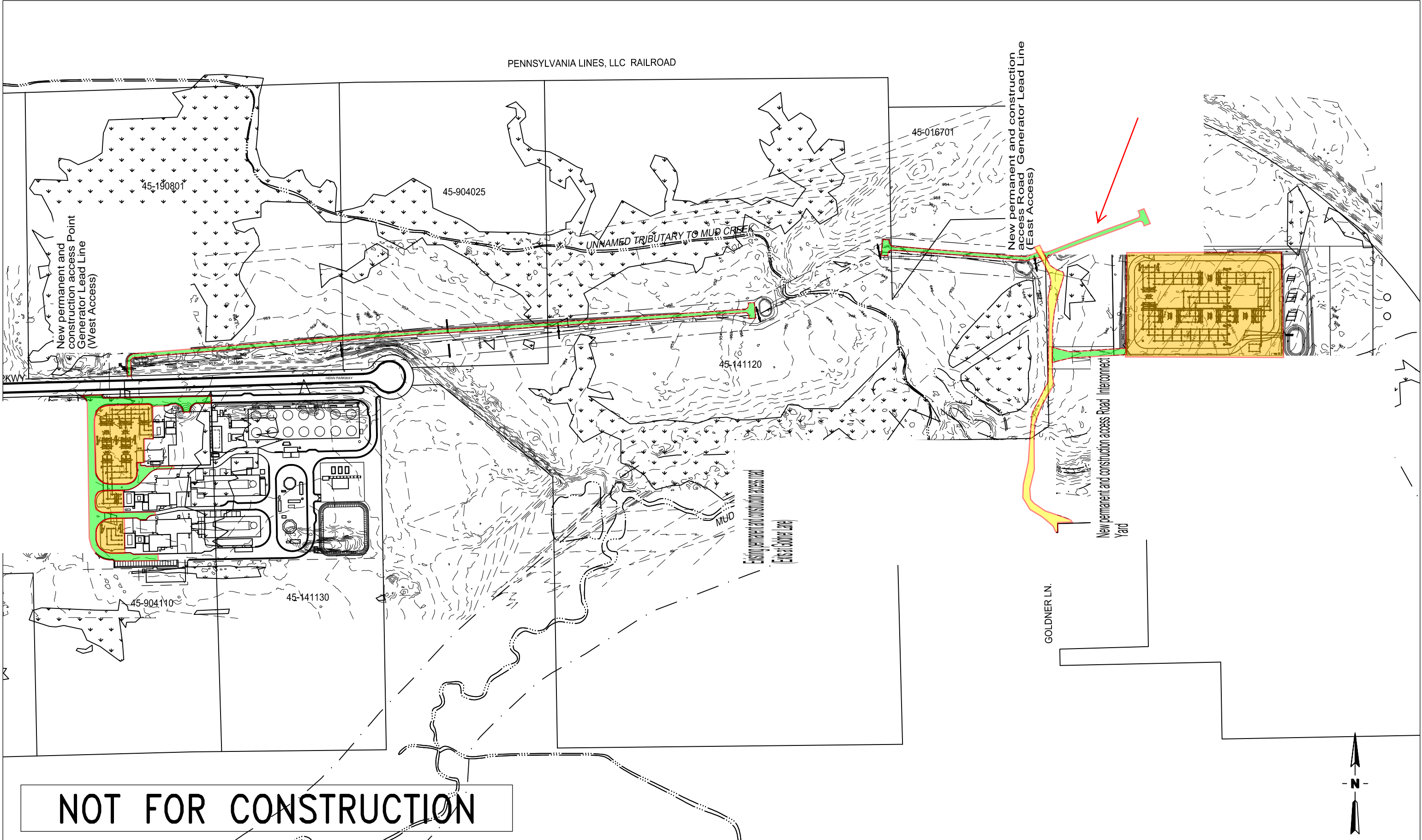
1/16				
	SCALE: 1"=20'	DWG NO. LC-14-01	SHEET	REV. 1A

Heavy Haul & Crane Route



INTEGRITY • INSPIRED • INVESTED

New permanent and construction access Point Collector Yard



NOT FOR CONSTRUCTION

—	ISSUED FOR PERMITTING	DCB	JPM	JPM	03/24/16
REV.	REVISION DESCRIPTION	DRAWN	CHECKED	APPROVED & DATE	

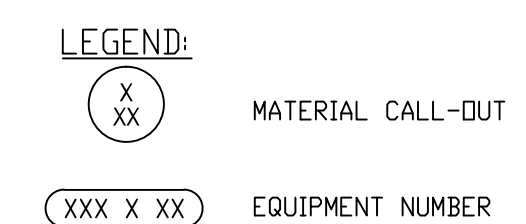


REALTIME
Utility Engineers
INCORPORATED
A QUANTA SERVICES COMPANY

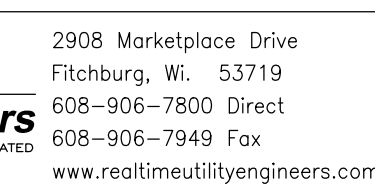
2908 Marketplace Drive
Fitchburg, Wi. 53719
608-906-7800 Direct
608-906-7949 Fax
www.realtimeutilityengineers.com

ISSUE FOR: & DATE	ENGINEER:	RUE	
REVIEW	DESIGNER:	RUE	
CONSTRUCTION	DRAWN:	RUE	DATE
AS BUILT	CHECKED:		3/16
RECORD	APPROVED:		

LORDSTOWN SUBSTATION AND GENERATOR LEAD PRELIMINARY GRADING PLAN OVERALL PROJECT PLAN			
SCALE: 1" = 300'	DWG NO.	SHEET	REV. —



1A	SUBMITTED FOR PRELIMINARY REVIEW	DCB	DCB	JPM	O1
REV	RECEIVED DESCRIPTION	(NAME)	(PROJECT)	(ADDRESS)	(CITY)



LORDSTOWN COLLECTOR STATION
GENERAL ARRANGEMENT

Attachment B



John R. Kasich, Governor
Mary Taylor, Lt. Governor
Craig W. Butler, Director

700 E. 12th St.
Columbus, OH 43261-2000

Certified Mail

**Re: Lordstown Energy Center
Permit - Intermediate
Approval
401 Wetlands
Trumbull
DSW401154803**

December 24, 2015

I certify this to be a true and accurate copy of the
official documents as filed in the records of the Ohio
Environmental Protection Agency.

Bill Siderewicz
Clean Energy Future – Lordstown, LLC
24 Proctor Street
Manchester, Massachusetts 01944

By: John Kasich Date: 12-24-15

Subject: Lordstown Energy Center
Trumbull County / Lordstown Township
Grant of a Level Two Isolated Wetland Permit
Ohio EPA ID No. 154803

Dear Stakeholders:

I hereby authorize the above referenced project under one or both of the following
authorities and it is subject to the following modifications and/or conditions:

Ohio Isolated Wetland Permit

Pursuant to Ohio Revised Code Chapter 6111, I hereby conclude that the above-
referenced project will comply with the applicable provisions of Ohio Revised Code
Sections 6111.02 through 6111.028. This authorization is specifically limited to a Ohio
Isolated Wetlands Permit (here after referred to as "permit") with respect to water
pollution and does not relieve the Permittee of further Certifications or Permits as may
be necessary under the law. I have determined that a lowering of water quality in the
Mahoning River Watershed (HUC 05030103) as authorized by this permit is necessary.
I have made this determination based upon the consideration of all public comments, if
submitted, and the requirements set forth in Ohio Revised Code Sections 6111.02
through 6111.028.

PART I ON-SITE WATER RESOURCES AND IMPACTS

A. Watershed Setting

The watershed in which this project is located, Lordstown Township – Mud Creek (HUC 050301030602), has an area of 14.2 square miles of which 22.0 percent is developed, 33.50 percent is forest, 90.0 percent is grass/pasture, 20.5 percent is row crop agriculture, and 8.2 percent is other.

Mud Creek is a warmwater habitat (EWH) stream, agriculture and industrial water supply, and considered a primary contact recreation.

B. Project Description

Construct an energy conversion facility which consists of interconnecting mechanical and electrical processes that convert natural gas to electricity.

C. Impacts

Impacts to isolated wetlands are as follows:

Fill 1.011 acres of isolated forested and non-forested wetlands as part of the construction/staging requirements of the project.

Wetland ID	Isolated or Non-isolated?	Forested or Non-Forested	Category	Total Acreage on Site	Total Acreage Impacted	Percent Avoided
M2	Isolated	Non-Forested	2	0.016	0.016	0
M3	Isolated	Forested	2	0.702	0.702	0
M4	Isolated	Non-Forested	1	0.249	0.249	0
M5	Isolated	Non-Forested	1	0.035	0.035	0
M6	Isolated	Non-Forested	1	0.009	0.009	0
Totals				1.011	1.011	0

PART II TERMS & CONDITIONS

- A. Terms and conditions outlined in this section apply to project and mitigation construction as described in this permit.
- B. This permit shall be valid for a period of five (5) years from the date of issuance.
- C. The Permittee shall notify Ohio EPA, in writing, and in accordance with *Part IV (NOTIFICATIONS TO OHIO EPA)* of this permit, upon the start and completion of site development.

- D. A copy of this permit shall remain on-site for the duration of the project.
- E. In the event of an inadvertent spill, the Permittee must immediately call the Ohio EPA Spill Hotline at 1-800-282-9378, as well as the Ohio EPA Section 401/Stormwater Manager (614-644-2001).
- F. Unpermitted impacts to surface water resources and/or their buffers occurring as a result of this project must be reported within 24 hours of occurrence to Ohio EPA, Division of Surface Water, Section 401/Stormwater Manager (614-644-2001), for further evaluation.
- G. Pesticide application(s) for the control of plants and animals shall be applied in accordance with rule 3745-1-01 of the Ohio Administrative Code, and may require a pesticide applicator license from the Ohio Department of Agriculture.
- H. Any authorized representative of the director shall be allowed to inspect the authorized activity at reasonable times to ensure that it is being or has been accomplished in accordance with the terms and conditions of this permit.
- I. In the event that there is a conflict between the permit application, including the mitigation plan, and the conditions within this permit, the condition shall prevail unless Ohio EPA agrees, in writing, that the permit application or other provision prevails.
- J. The Permittee shall provide electronic maps of the development area and the mitigation area to Ohio EPA 401 WQC and Isolated Wetland Permitting Section within 30 days of the date of this permit. JPEG, TIFF, PDF or BMP files are acceptable. When sending the electronic files, include the Ohio EPA ID Number and the Army Corps of Engineers Number (if applicable). If possible, these electronic maps shall be GIS shape files or Geodatabase files. If this is not possible, the electronic maps shall be in another electronic format readable in GIS (GIF, TIF, etc). The electronic files shall be sent to the following e-mail address: EPA.401Webmail@epa.ohio.gov

If the files are too large to send by e-mail, a disk containing the electronic files shall be mailed to the following address:

Ohio Environmental Protection Agency
Division of Surface Water
Attn: 401/Stormwater Section Manager
50 West Town Street, Suite 700
PO Box 1049
Columbus, OH 43216-1049

- K. This proposal may require other permits from Ohio EPA. For information concerning application procedures, contact the Ohio EPA District Office as follows:

Ohio Environmental Protection Agency
Northeast District Office
2110 East Aurora Road
Twinsburg, Ohio 44087
330-963-1200

Additional information regarding environmental permitting assistance at Ohio EPA can be found at http://www.epa.ohio.gov/dir/permit_assistance.aspx

L. Best Management Practices (BMPs)

1. All water resources and their buffers which are to be avoided shall be clearly indicated on site drawings, demarcated in the field and protected with suitable materials (e.g., silt fencing) prior to site disturbance. These materials shall remain in place and be maintained throughout the construction process.
2. All BMPs for storm water management shall be designed and implemented in accordance with the most current edition of the Ohio Department of Natural Resources Rainwater and Land Development Manual, unless otherwise required by the National Pollutant Discharge Elimination System (NPDES) general permit for storm water discharges associated with construction activities (construction general permit), if required.

A copy of the Rainwater and Land Development Manual is available at:
<http://soilwater.ohiodnr.gov/water-conservation/stormwater-management>

A copy of the NPDES construction general permit is available at:
http://www.epa.ohio.gov/dsw/storm/construction_index.aspx#Construction%20General%20Permit

3. Straw bales shall not be used as a form of erosion/sediment control.
4. Temporary fill shall consist of suitable non-erodible material and shall be stabilized to prevent erosion.
5. Materials used for fill or bank protection shall consist of suitable material free from toxic contaminants in other than trace quantities. Broken asphalt is specifically excluded from use as fill or bank protection.

6. Concrete rubble used for fill or bank stabilization shall be in accordance with ODOT specifications; free of exposed re-bar; and, free of all debris, soil and fines.
7. Chemically treated lumber which may include, but is not limited to, chromated copper arsenate (CCA) and creosote treated lumber shall not be used in structures that come into contact with waters of the state.
8. Trees removed from temporary impact areas to facilitate construction shall be replaced with appropriate tree species native to Ohio.

M. Wildlife Protection

In the event that an eastern massasauga rattlesnake (*Sistrurus catenatus catenatus*) is encountered during construction of the project, work should immediately cease and the Ohio Department of Natural Resources, Division of Wildlife contacted. Caution should be employed during construction and during the snakes' active season (March 15 - November 15).

PART III MITIGATION

A. Description of Required Mitigation

The applicant proposes to purchase 2.5 total In-Lieu Fee wetland credits, 0.7 non-forested credits and 1.8 forested credits, from Stream and Wetlands Foundation In-Lieu Fee program. A copy of the reservation credits agreement was submitted with the application.

B. Mitigation and Monitoring Plan

As mitigation for impacts described in Part I.C of this permit the Permittee shall implement the mitigation plan dated September 11, 2015, and in accordance with the conditions in this permit.

C. Timing of Mitigation Requirements

Within 30 days of the date of permit, a copy of a fully executed in-lieu fee program agreement with Stream and Wetlands Foundation shall be provided to Ohio EPA. **Impacts to waters of the state shall not occur until the terms of this condition have been met.**

PART IV NOTIFICATIONS TO OHIO EPA

All notifications, correspondence, and reports regarding this permit shall reference the following information:

Permittee Name: Clean Energy Future-Lordstown, LLC
Project Name: Lordstown Energy Center
Ohio EPA ID No.: 154803

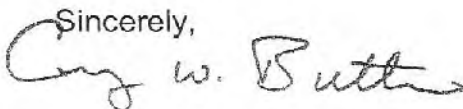
and shall be sent to:

Ohio Environmental Protection Agency
Division of Surface Water, 401/IWP Unit
Lazarus Government Center
50 West Town Street
P.O. Box 1049
Columbus, Ohio 43216-1049

You are hereby notified that this action of the director is final and may be appealed to the Environmental Review Appeals Commission pursuant to Section 3745.04 of the Ohio Revised Code. The appeal must be in writing and set forth the action complained of and the grounds upon which the appeal is based. The appeal must be filed with the Commission within 30 days after notice of the director's action. The appeal must be accompanied by a filing fee of \$70.00, made payable to "Ohio Treasurer Josh Mandel," which the Commission, in its discretion, may reduce if by affidavit you demonstrate that payment of the full amount of the fee would cause extreme hardship. Notice of the filing of the appeal shall be filed with the director within three days of filing with the Commission. Ohio EPA requests that a copy of the appeal be served upon the Ohio Attorney General's Office, Environmental Enforcement Section. An appeal may be filed with the Environmental Review Appeals Commission at the following address:

Environmental Review Appeals Commission
77 South High Street, 17th Floor
Columbus, Ohio 43215

Sincerely,



Craig W. Butler
Director

cc: Tyler Bintrim, Department of the Army, Pittsburgh District, Corps of Engineers
Matthew Mason, Department of the Army, Pittsburgh District, Corps of Engineers
Peter Swenson, U.S. EPA, Region 5
Dan Everson, U.S. Fish & Wildlife Service
John Kessler, ODNR, Office of Real Estate
Dave Snyder, Ohio Historical Preservation Office
Ed Wilk Ohio EPA, DSW, Section 401/IWP
Jeff DeShon, Ohio EPA, DSW, EAS
Megan Wolf, Ohio EPA, DSW, Mitigation Coordinator
Vince Messerly, Stream + Wetlands Foundation
Jessica Stratigakos, The Mannik & Smith Group, Inc.

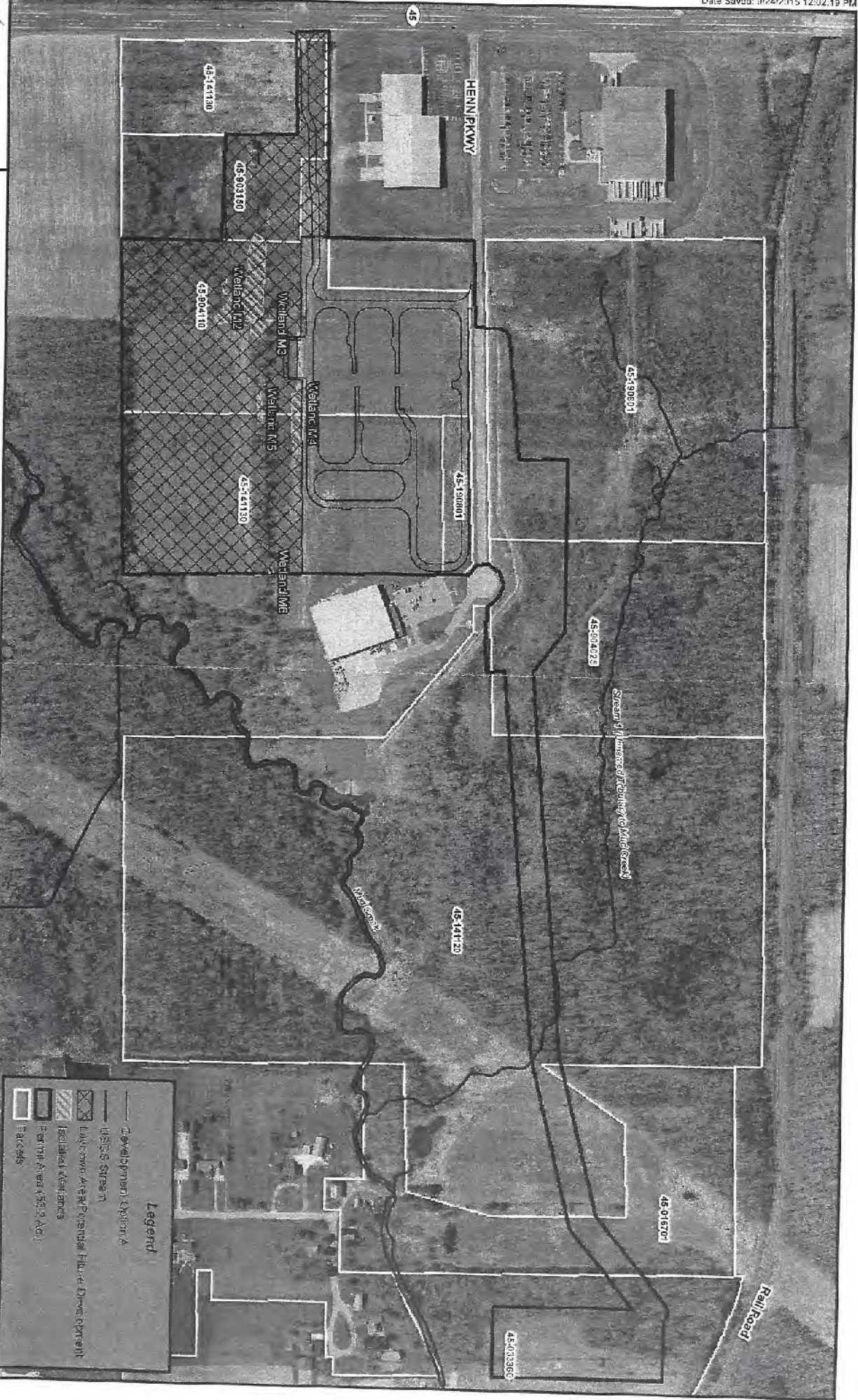
Attachments: Site Location Map (project)

Ohio EPA has developed a customer service survey to get feedback from regulated entities that have contacted Ohio EPA for regulatory assistance, or worked with the Agency to obtain a permit, license or other authorization. Ohio EPA's goal is to provide our customers with the best possible customer service, and your feedback is important to us in meeting this goal. Please take a few minutes to complete this survey and share your experience with us at <http://www.surveymonkey.com/s/ohioepacustomersurvey>.



Isolated Wetlands
Lordstown Energy Center
Lordstown, Ohio

Scott
9-29-15



Legend

- Development Option A
- USGS Stream
- Isolated Wetlands
- Isolated Wetlands
- Permit Area (50.2 AC.)
- Parcels

Notes
 The Twp Soil Count, photos, and map dated April 2011, is provided by CIGRI as part of the Ohio Stream Lateral Property Program.





DEPARTMENT OF THE ARMY
PITTSBURGH DISTRICT, CORPS OF ENGINEERS
WILLIAM S. MOORHEAD FEDERAL BUILDING
1000 LIBERTY AVENUE
PITTSBURGH, PA 15222-4186

REPLY TO

February 18, 2016

Operations Division
Regulatory Branch
2005-1448

Clean Energy Future- Lordstown, LLC
c/o William Siderewicz
24 Proctor Street
Manchester, Massachusetts 01944

Dear Mr. Siderewicz:

I refer to your request for a permit modification, received in this office August 14, 2015, requesting a modification to Department of the Army Permit No. 2005-1448 previously issued to Henn Development, Incorporated.

You have proposed to impact 1.82 acres of wetland for the construction of the Lordstown Energy Center on 53 acres within the Lordstown Industrial Park located along the Henn Parkway, Lordstown, Trumbull County, Ohio. This facility will convert natural gas to electricity and involves two gas turbines, two heat recovery steam generators, one steam turbine, a wet cooling tower, and an electrical switchyard which will convey the electricity to the local grid system.

Initially the Henn Development permit authorized 1.76 acres of wetland fill with permittee responsible mitigation being proposed just off site. Currently the mitigation requirement is proposed to be satisfied through the purchase of 3.1 credits from the Stream + Wetlands Foundation In-Lieu Fee (ILF) in addition to establishing a 40.04 acre conservation instrument containing 19.45 acres of wetland. Permission is granted to impact the aquatic resources for the construction of the Lordstown Energy Center per the applicable original permit conditions in addition to the following **special conditions**.

1. The time limit for completing the work authorized ends on December 31, 2019. If you find that you need more time to complete the authorized activity, submit your request for a time extension to this office for consideration at least one month before the above date is reached.
2. Submit a check payable to "Stream + Wetlands Foundation" for the purchase price of \$139,500.00 for 3.1 wetland credits from The Stream + Wetlands Foundation ILF Program. Mail both the form and check to Stream + Wetlands Foundation at:

Stream + Wetlands Foundation
1220 Stone Run Court
Lancaster, Ohio 43130

Please note, this permit is not valid until the ILF payment has been made. After making the required payment, please forward a copy of the ILF Receipt to our office within 60 calendar days and reference file number 2005-1448.

3. A fully signed and executed conservation instrument protecting 40.04 acres (19.45 acres of which is wetland) as shown on the enclosed map titled "Conservation Easement Lordstown Energy Center Lordstown, Ohio" is required to be submitted to this office within 60 days.
4. Tree removal may not occur from April 1 to September 30 to preclude impacts to federally listed bats.

All four Special Conditions from the original Henn Development permit are rescinded as anticipated development, permittee responsible mitigation, and the original conservation instrument are no longer applicable. All other conditions of the Permit remain in full force and effect.

If you have any questions, please contact Tyler Bintrim at 412-395-7115 or email at tyler.j.bintrim@usace.army.mil. Please complete our customer survey online and provide us with feedback at http://corpsmapu.usace.army.mil/cm_apex/f?p=136:4:0.

BY AUTHORITY OF THE SECRETARY OF THE ARMY:

//SIGNED//

Scott A. Hans
Chief, Regulatory Branch

Enclosure

Copies Furnished:

Jessica Stratigakos
The Mannik and Smith Group, Inc.
23225 Mercantile Road
Beachwood, Ohio 44122

Ed Wilk
Ohio Environmental Protection Agency
Division of Surface Water
2110 E. Aurora Rd,
Twinsburg, OH 44087

This foregoing document was electronically filed with the Public Utilities

Commission of Ohio Docketing Information System on

5/5/2016 3:31:56 PM

in

Case No(s). 14-2322-EL-BGN

Summary: Correspondence of Clean Energy Future-Lordstown, LLC in Compliance with Condition No. 7 electronically filed by Teresa Orahod on behalf of Sally Bloomfield