



COLUMBUS | CLEVELAND
CINCINNATI-DAYTON
MARIETTA

BRICKER & ECKLER LLP
100 South Third Street
Columbus, OH 43215-4291
MAIN: 614.227.2300
FAX: 614.227.2390

www.bricker.com
info@bricker.com

Sally W. Bloomfield
614.227.2368
sbloomfield@bricker.com

March 7, 2016

Via Electronic Filing

Ms. Barcy McNeal
Administration/Docketing
Public Utilities Commission of Ohio
180 East Broad Street, 11th Floor
Columbus, OH 43215-3793

**Re: Clean Energy Future-Lordstown, LLC,
OPSB Case No. 14-2322-EL-BGN**

Dear Ms. McNeal:

The September 17, 2015, Opinion, Order, and Certificate ("Certificate") approving Clean Energy Future-Lordstown, LLC ("CEFL") Certificate of Environmental Compatibility and Public Need to Construct the Lordstown Energy Center established a set of conditions as part of the Certificate.

Within this set of conditions, **Condition No. 7** requires that:

At least 30 days prior to the preconstruction conference, the Applicant shall submit to Staff, for review, one set of detailed engineering drawings of the final project design, including the facility, temporary and permanent access roads, any crane routes, construction staging areas, and any other associated facilities and access points so that Staff can determine that the final project design is in compliance with the terms of the certificate. The final project layout shall be provided in hard copy and as geographically referenced electronic data. The final design shall include all requirements of the certificate and references at the locations where the Applicant and/or its contractors must adhere to a specific requirement in order to comply with the certificate.

Attached is a copy of the site layout and engineering drawings for the transmission right-of-way and switchyard tree clearing phase of construction. Thus, this letter is to inform the OPSB Staff that CEFL is in compliance with **Condition No. 7** for the transmission right-of-way and switchyard tree clearing phase of construction.

If you have any questions please call at the number listed above.

Sincerely,

Sally W. Bloomfield

Attachment

cc: Jon Whitis (w/Attachment)

LEGEND

- LIMIT OF DISTURBANCE
- LIMIT OF ISOLATED WETLANDS
- PROPOSED PLANT AREA
- TREE CLEARING AREA



0 200 400
SCALE IN FEET



TETRA TECH

WWW.TETRATECH.COM

6715 TIPPECANOE ROAD – SUITE C201
CANFIELD, OH 44406
T: (330) 286-3683 | F: (330) 286-3573

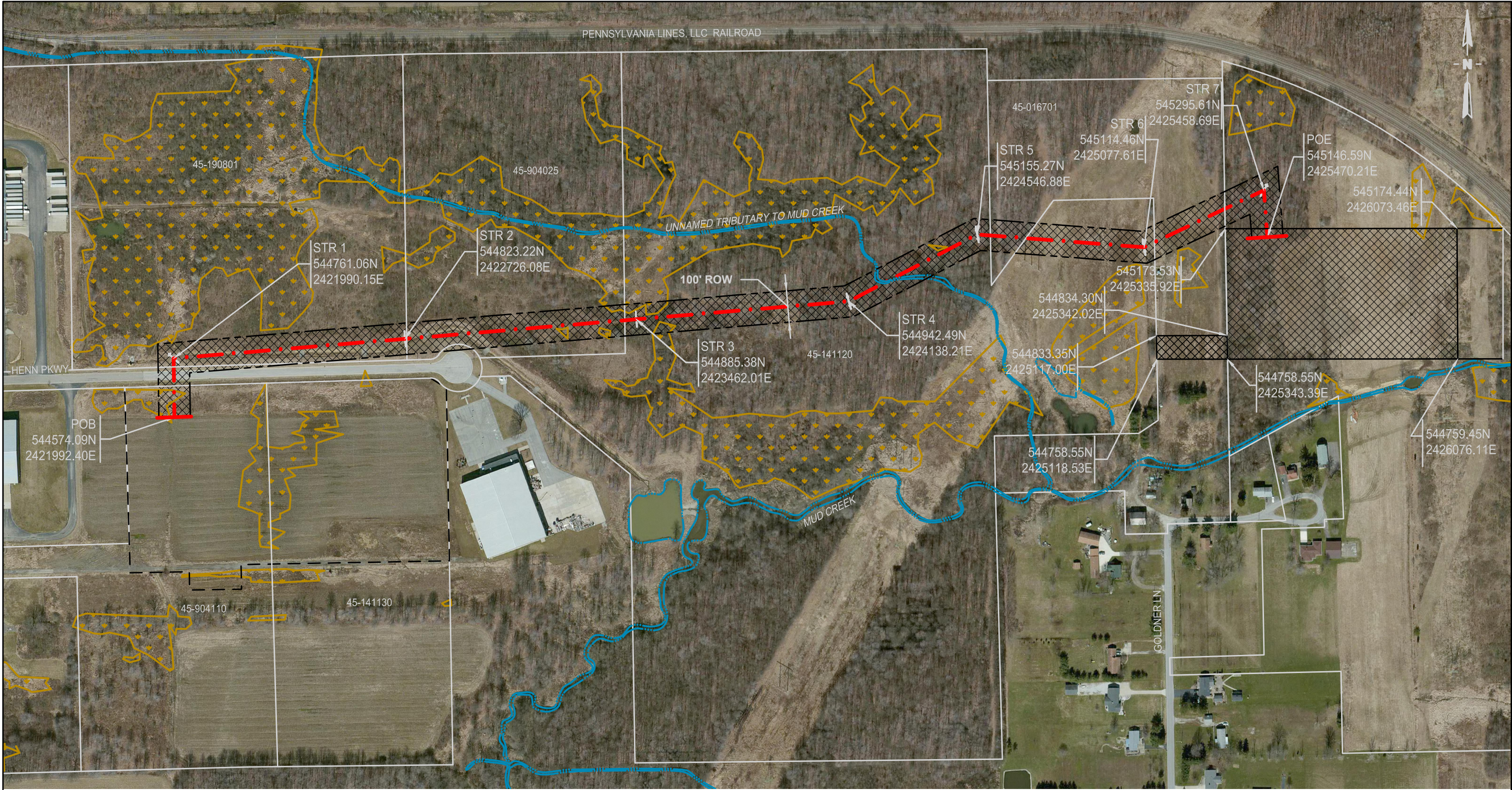
CLEAN ENERGY FUTURE, LLC
LORDSTOWN, OH

TREE CLEARING EXHIBIT

DATE:	01/26/16
PROJECT NO.:	00089
DRAWN BY:	BC
CHECKED BY:	LD
SHEET:	1 OF 1

COPYRIGHT TETRA TECH INC.

FIGURE 1



LEGEND

TRANSMISSION LINE

45-904110

PARCEL NUMBER

TREE CLEARING AREA

WETLANDS

WATER

REV.	REVISION DESCRIPTION	DRAWN	CHECKED	APPROVED & DATE

REALTIME
Utility Engineers
INCORPORATED

2908 Marketplace Drive
Fitchburg, Wi. 53719
608-906-7800 Direct
608-906-7949 Fax
www.realtimeutilityengineers.com

ISSUE FOR: & DATE

REVIEW

CONSTRUCTION

AS BUILT

RECORD

ENGINEER: RUE

DESIGNER: RUE

DRAWN: RUE

CHECKED:

APPROVED:

DATE

12/15

LORDSTOWN GENERATION TIE
TREE CLEARING BOUNDARY MAP
ATTACHMENT A

SCALE: 1"=300'

DWG NO.

SHEET

REV.

This foregoing document was electronically filed with the Public Utilities

Commission of Ohio Docketing Information System on

3/7/2016 4:24:11 PM

in

Case No(s). 14-2322-EL-BGN

Summary: Correspondence of Clean Energy Future-Lordstown in Compliance with Condition No. 7 electronically filed by Teresa Orahod on behalf of Sally Bloomfield