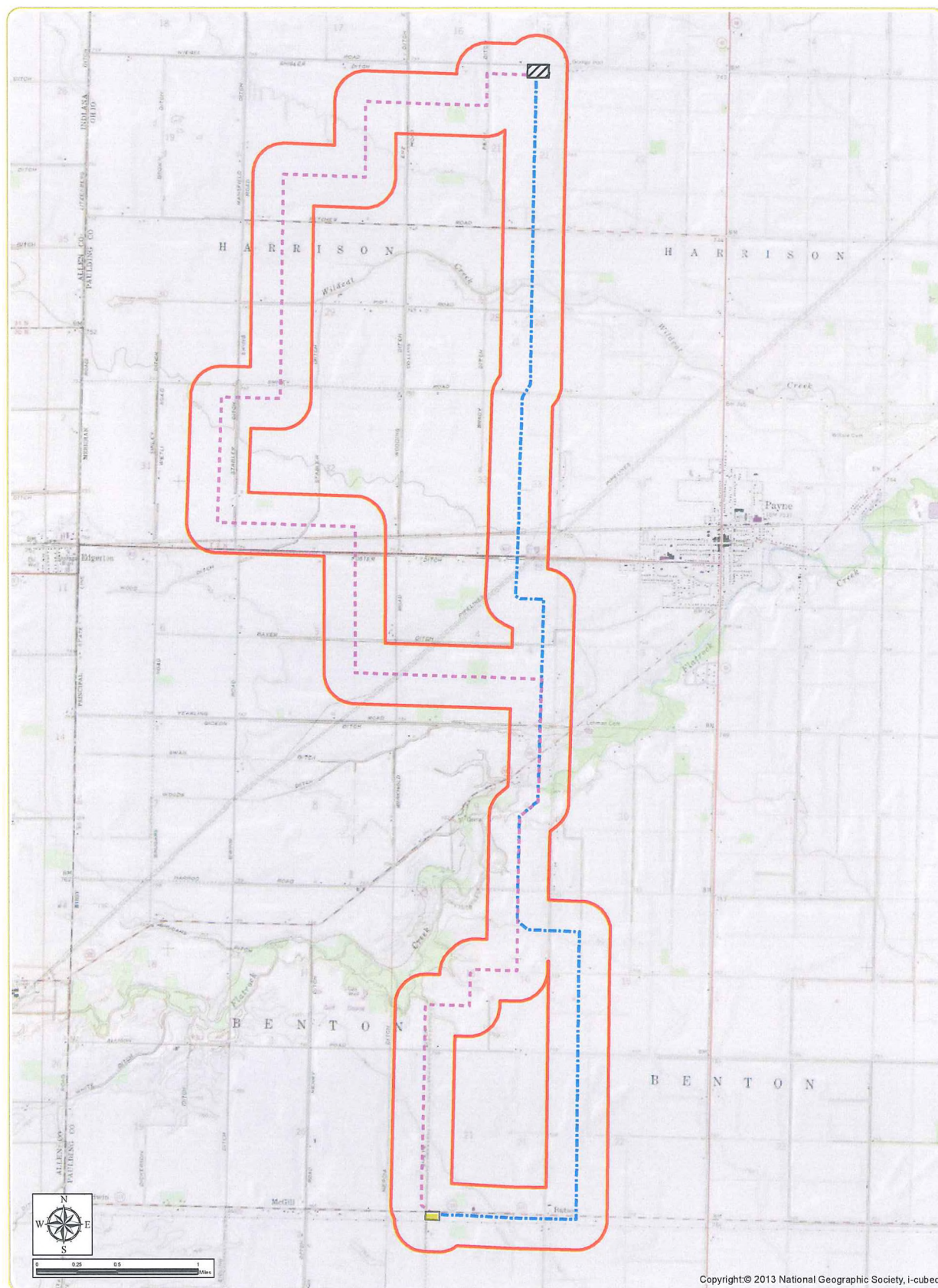


Figures



Copyright © 2013 National Geographic Society, i-cubed

Timber Road III Transmission Line and POI Switchyard

Harrison and Benton Townships, Paulding County, Ohio

Figure 1: Project Location

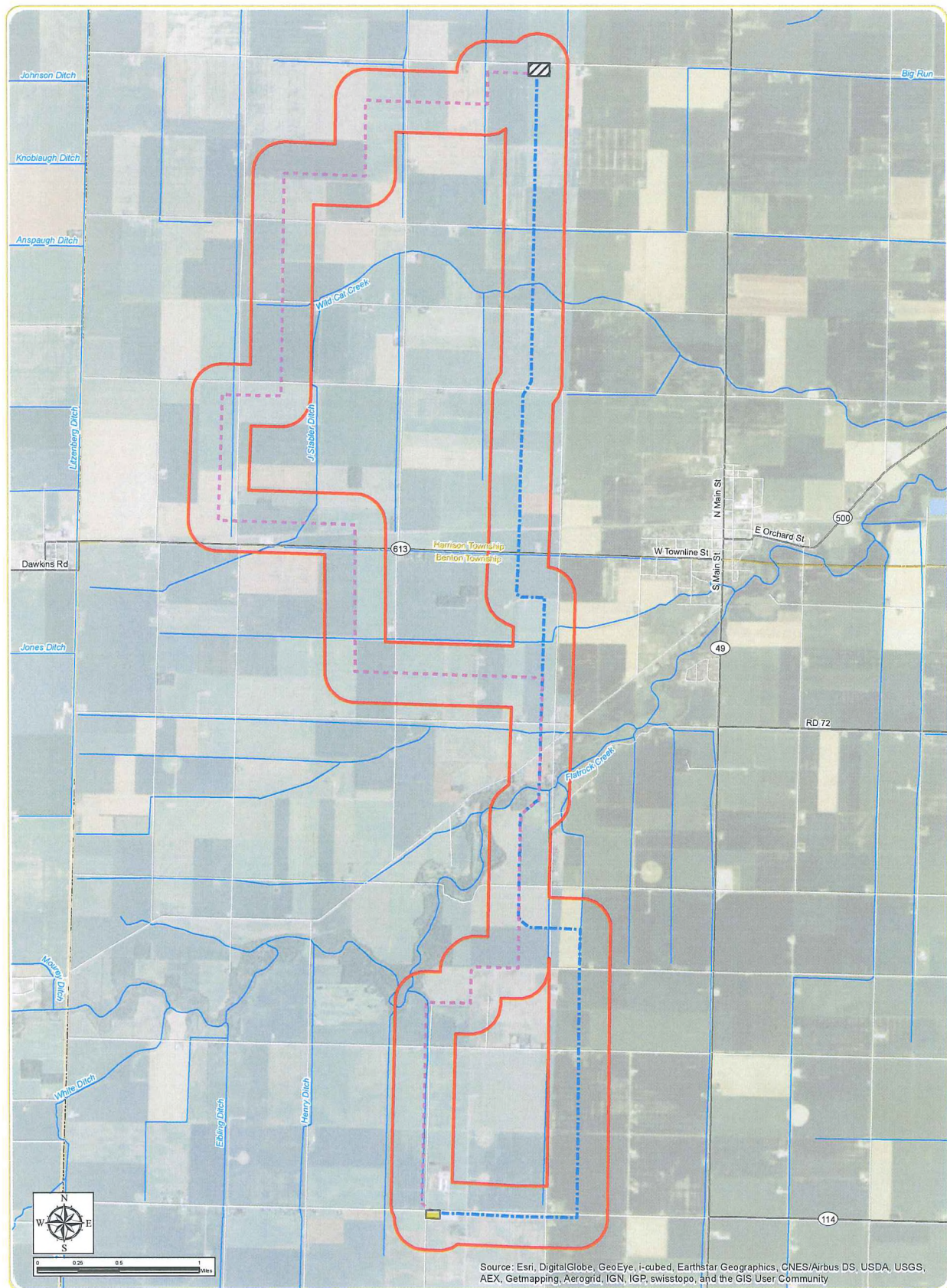
December 2015

Notes: 1. Basemap: ESRI ArcGIS "USA Topo Maps" Online Map Service.
2. This is a color graphic. Reproduction in grayscale may misrepresent the data.

- Primary Transmission Route
- Alternate Transmission Route
- ▨ Project Collection Substation
- Point of Interconnect Switchyard
- ▭ Study Area



www.edrdpc.com



Timber Road III Transmission Line and POI Switchyard Harrison and Benton Townships, Paulding County, Ohio

Figure 2: Existing Conditions

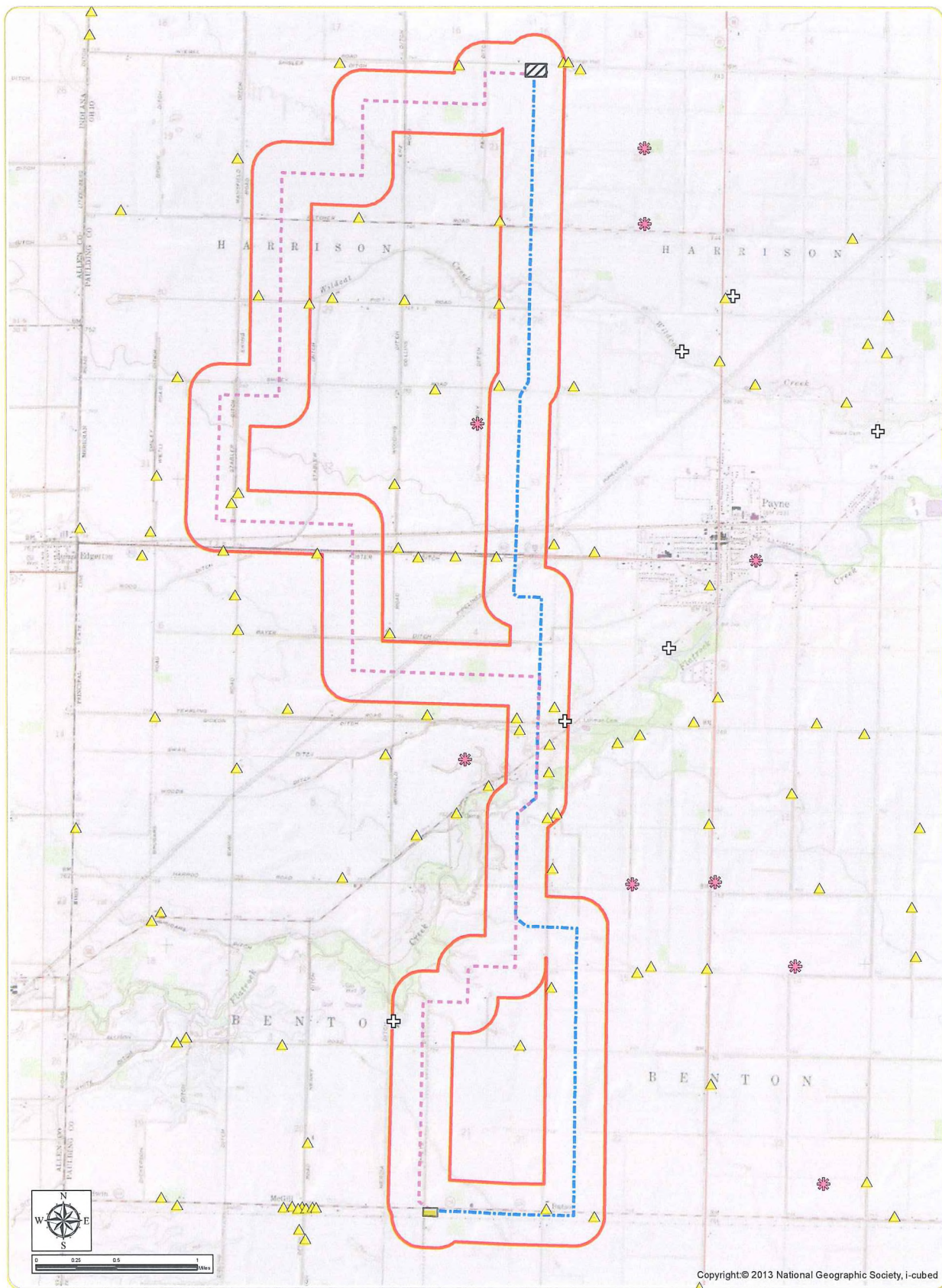
December 2015

Notes: 1. Basemap: ESRI ArcGIS "World Imagery" Online Map Service
2. This is a color graphic. Reproduction in grayscale may misrepresent the data.

- Primary Transmission Route
- - - Alternate Transmission Route
- ▨ Project Collection Substation
- Point of Interconnect Switchyard
- ▭ Town Boundary
- ▭ County Boundary
- ▭ Study Area



www.edrdpc.com



Timber Road III Transmission Line and POI Switchyard

Harrison and Benton Townships, Paulding County, Ohio

Figure 3: Previously Identified Cultural Resources

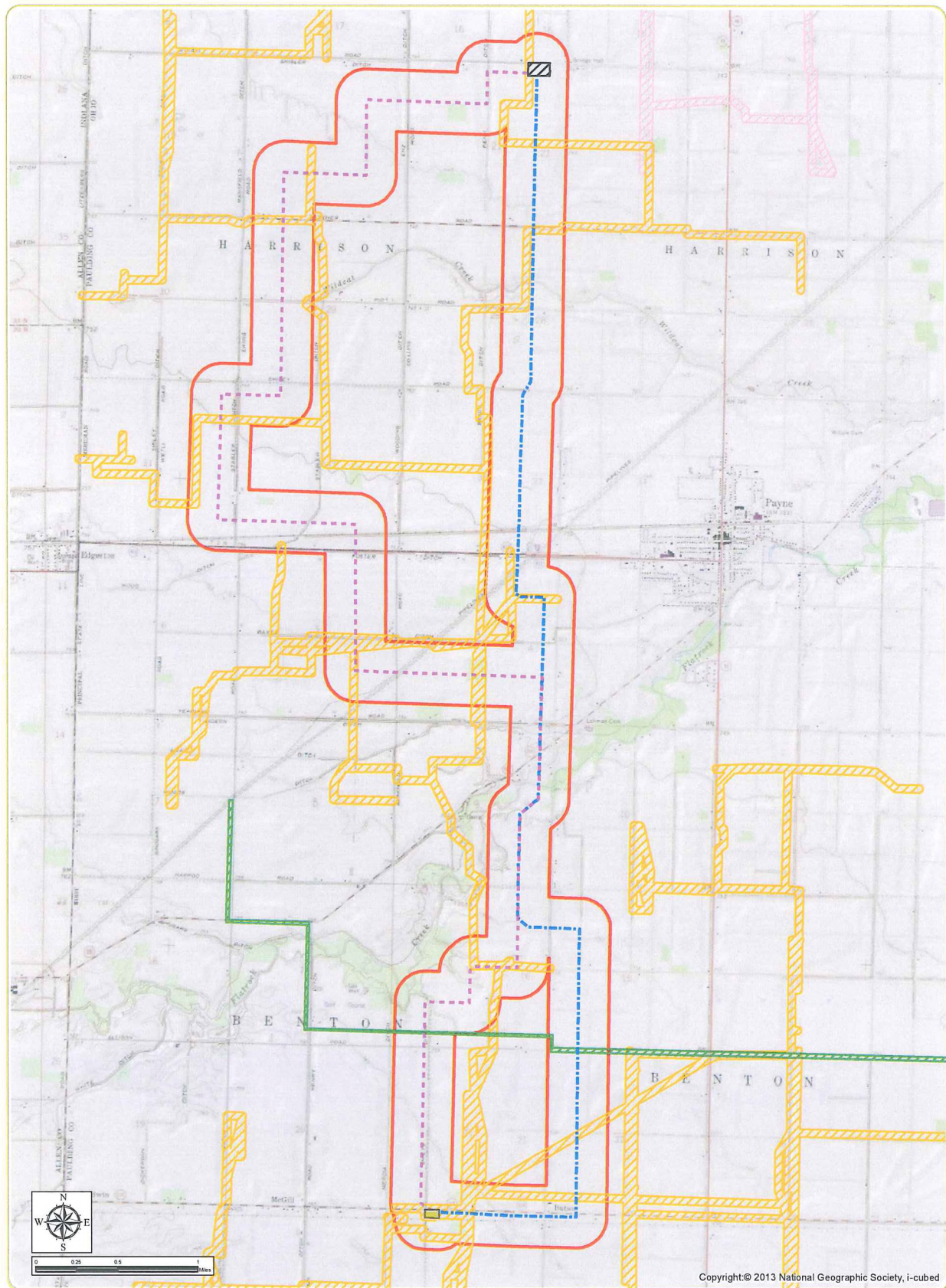
December 2015

Notes: 1. Basemap: ESRI ArcGIS "USA Topo Maps" Online Map Service
2. This is a color graphic. Reproduction in grayscale may misrepresent the data.

- ▲ OHI Structure (Historic Architectural)
- ✿ OAI Site (Archaeological)
- ✚ OGS Site (Cemetery)
- Primary Transmission Route
- Alternate Transmission Route
- ▨ Project Collection Substation
- Point of Interconnect Switchyard
- ▭ Study Area



www.edrdpc.com



Timber Road III Transmission Line and POI Switchyard Harrison and Benton Townships, Paulding County, Ohio

Figure 4: Previous Cultural Resources Surveys

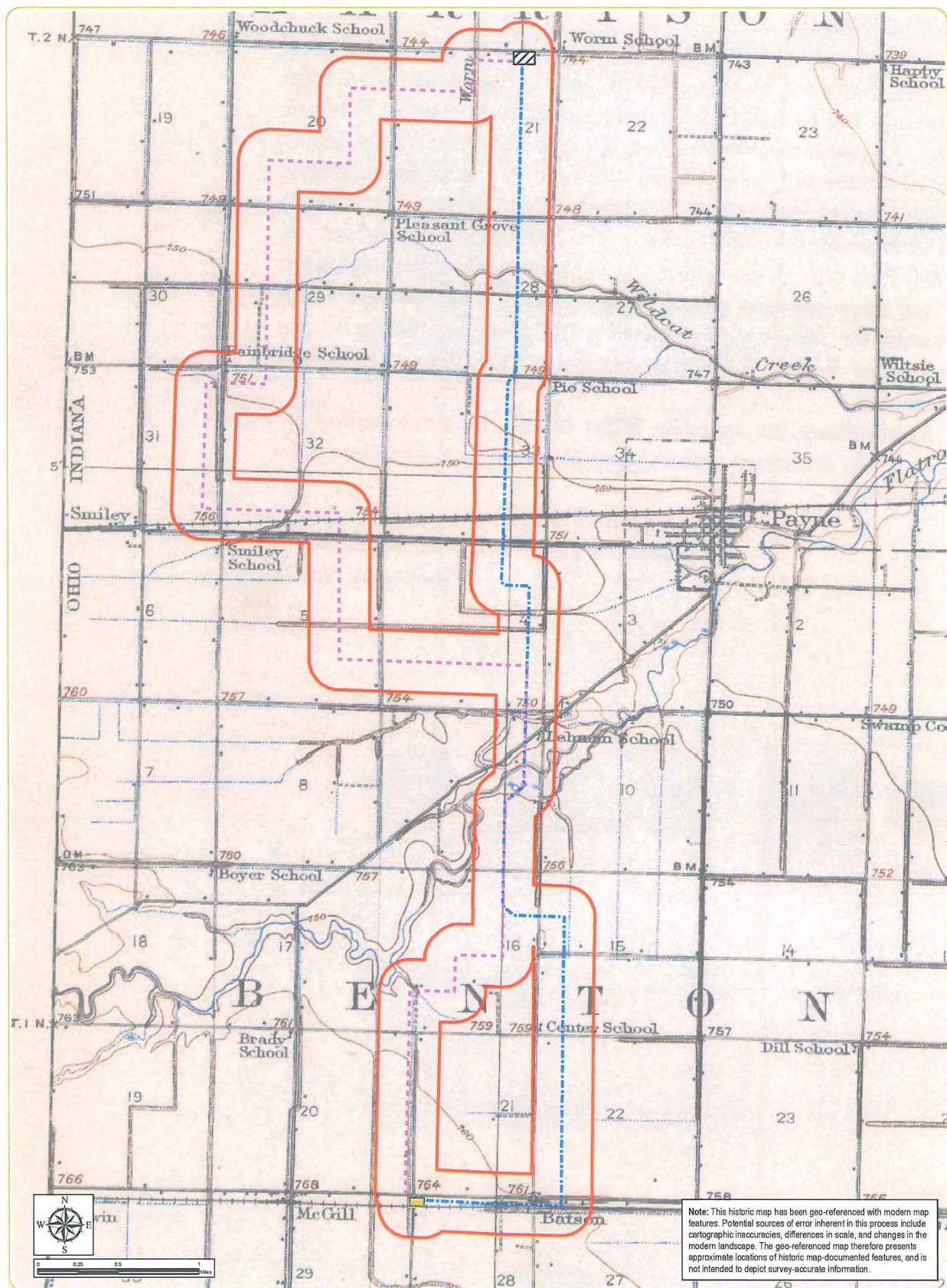
December 2015

Notes: 1. Basemap: ESRI ArcGIS "USA Topo Maps" Online Map Service
2. This is a color graphic. Reproduction in grayscale may misrepresent the data.

- | | |
|---|----------------------------------|
| Previous Cultural Resources Survey | Primary Transmission Route |
| Timber Road I Phase 1 Archaeology Survey | Alternate Transmission Route |
| Timber Road II Phase 1 Archaeology Survey | Project Collection Substation |
| Haviland Lateral Gas Connector Phase 1 Archaeology Survey | Point of Interconnect Switchyard |
| | Study Area |



www.edrdpo.com



Timber Road III Transmission Line and POI Switchyard Harrison and Benton Townships, Paulding County, Ohio

Figure 5: 1914 USGS Paulding, Ohio topographic quadrangle map

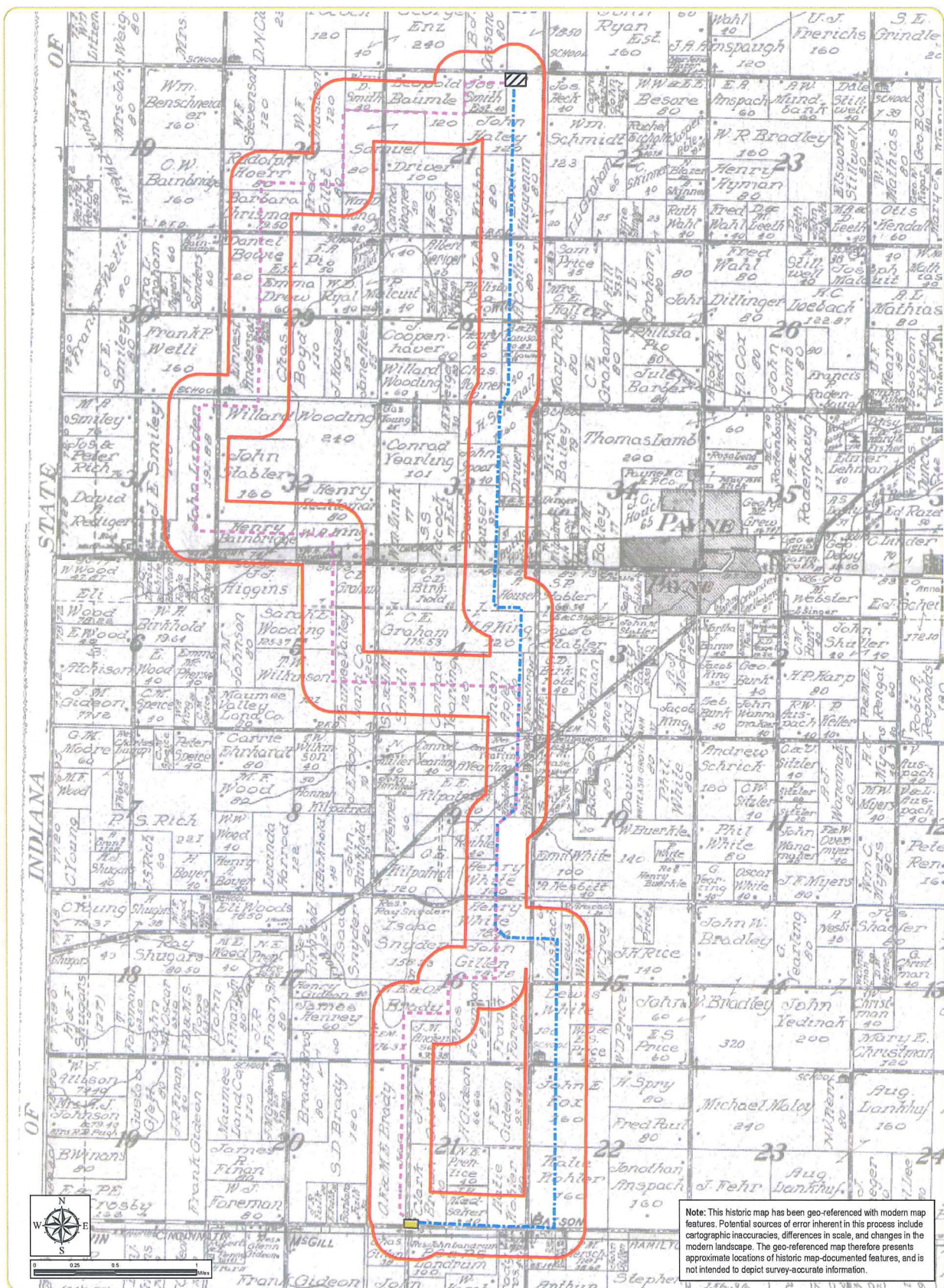
December 2015

Notes: 1. Basemap: 1914 USGS Paulding, Ohio 1:62500 topographic quadrangle map.
2. This is a color graphic. Reproduction in grayscale may misrepresent the data.

- Primary Transmission Route
- Alternate Transmission Route
- ▨ Project Collection Substation
- Point of Interconnect Switchyard
- Study Area



www.edrdpc.com



Timber Road III Transmission Line and POI Switchyard Harrison and Benton Townships, Paulding County, Ohio

Figure 6: 1917 Ogle and Co. Standard Atlas of Paulding County, Ohio

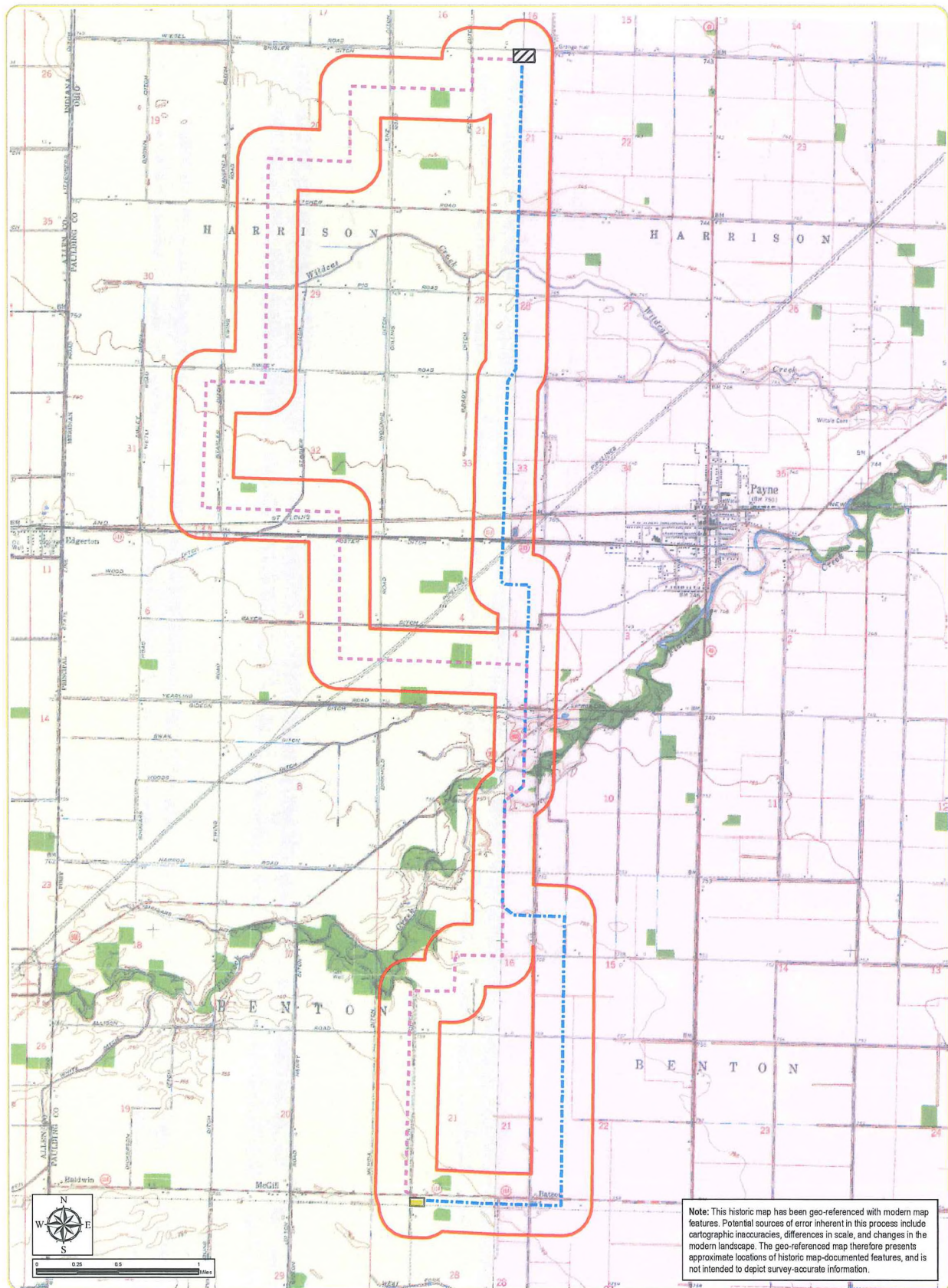
December 2015

Notes: 1. Basemap: 1917 Ogle and Co. Standard Atlas of Paulding County, Ohio.
2. This is a color graphic. Reproduction in grayscale may misrepresent the data.

- Primary Transmission Route
- - - Alternate Transmission Route
- ▨ Project Collection Substation
- Point of Interconnect Switchyard
- ▭ Study Area



www.edrpe.com



Timber Road III Transmission Line and POI Switchyard

Harrison and Benton Townships, Paulding County, Ohio

Figure 7: 1958 USGS Woodburn South, Indiana and 1960 Payne, Ohio topographic quadrangle maps

December 2015

Notes: 1. Basemap: 1958 USGS Woodburn South, Indiana and 1960 Payne, Ohio 1:24000 topographic quadrangle maps
2. This is a color graphic. Reproduction in grayscale may misrepresent the data.

- Primary Transmission Route
- Alternate Transmission Route
- ▧ Project Collection Substation
- Point of Interconnect Switchyard
- ▭ Study Area



www.edrdpc.com

This foregoing document was electronically filed with the Public Utilities

Commission of Ohio Docketing Information System on

12/8/2015 3:30:39 PM

in

Case No(s). 15-1737-EL-BTX

Summary: Application Exhibit E-2 (Cultural Resources Records Review Figures) electronically filed by Mr. Michael J. Settineri on behalf of Paulding Wind Farm III LLC