



Timber Road III Transmission Line
Harrison and Benton Townships - Paulding County, Ohio

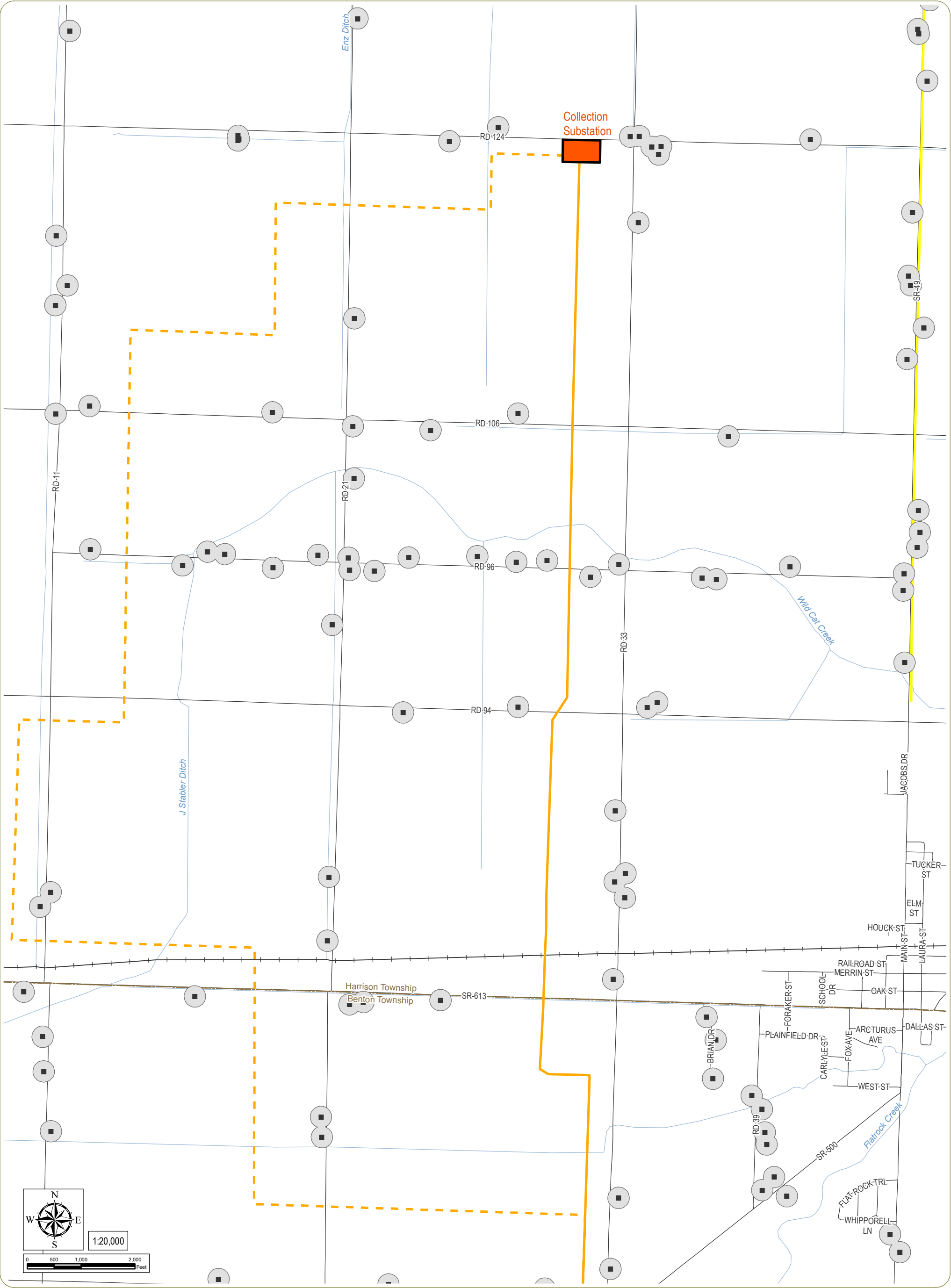
Figure 03-1: Route Study Area

December 2015

Notes: 1. Basemap: ESRI ArcGIS Online "World Imagery" Map Service.
2. This is a color graphic. Reproduction in grayscale may misrepresent the data.
3. The collection substation is part of separate applications in Case Nos. 15-2030-EL-BGA and 15-2031-EL-BGA.

- | | |
|-----------------------------------|------------------------|
| Primary Transmission Line Route | Delineated Wetlands |
| Alternate Transmission Line Route | Stream, River, or Lake |
| Public Road | Parcel Boundary |
| Substation/Switchyard | Town Boundary |
| Approximate Study Area | County Boundary |





Timber Road III Transmission Line
Harrison and Benton Townships - Paulding County, Ohio

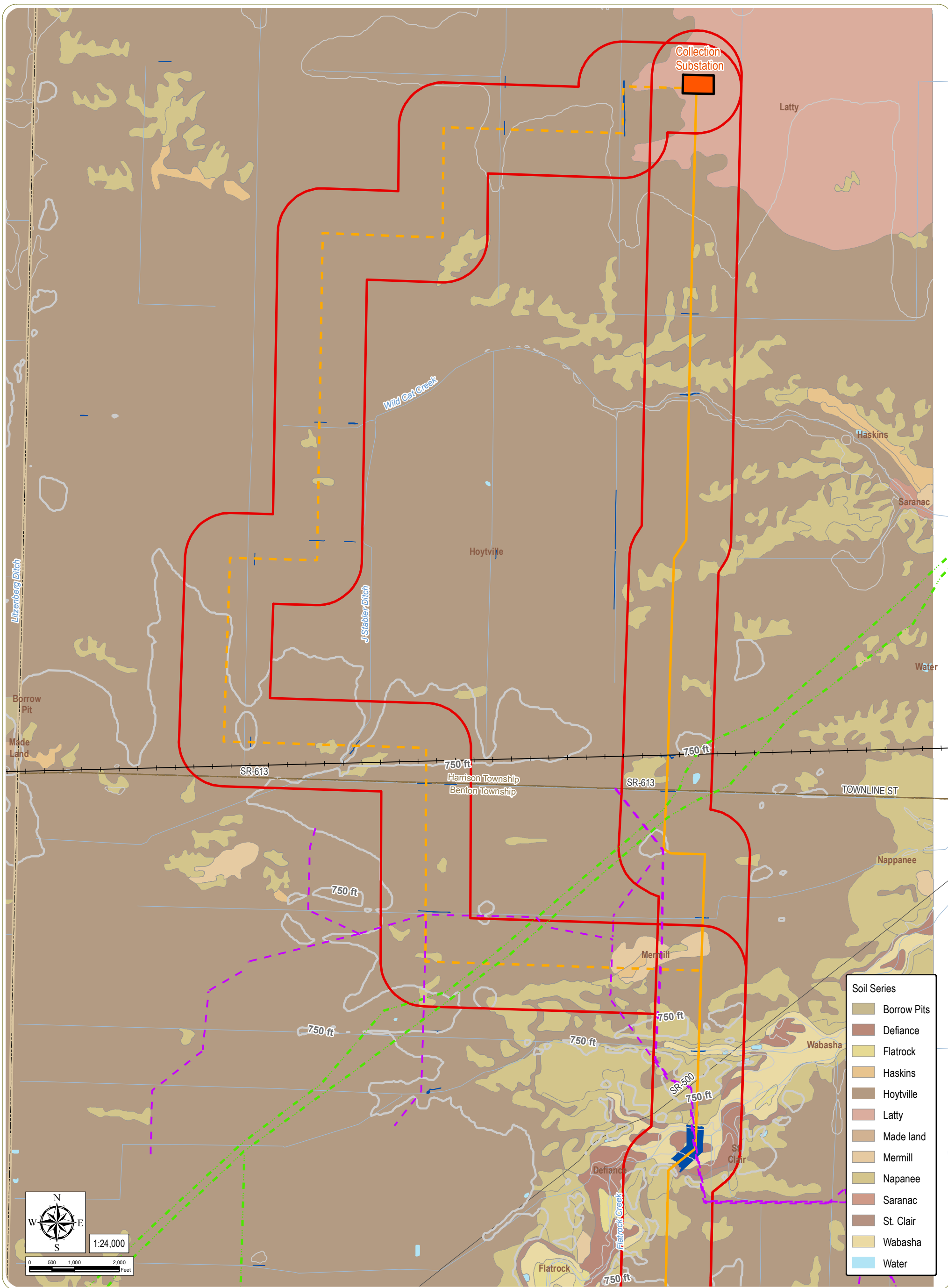
Figure 03-2: Constraint Map - Sheet 1 of 2

December 2015

Notes: 1. Basemap: ESRI StreetMap North America, 2012; OHIO DOT public road data.
2. This is a color graphic. Reproduction in grayscale may misrepresent the data.
3. The collection substation is part of separate applications in Case Nos. 15-2030-EL-BGA and 15-2031-EL-BGA.

- | | |
|-----------------------------------------|---------------------------|
| ■ Residence | ■ Substation/Switchyard |
| — Existing Transmission Line | ■ 200ft Residence Setback |
| — Primary Transmission Line Route | — Stream, River, or Lake |
| - - - Alternate Transmission Line Route | - - - Town Boundary |
| — Public Road | - - - County Boundary |





Timber Road III Transmission Line
Harrison and Benton Townships - Paulding County, Ohio

Figure 04-1: Geography and Topography - Sheet 1 of 2

December 2015

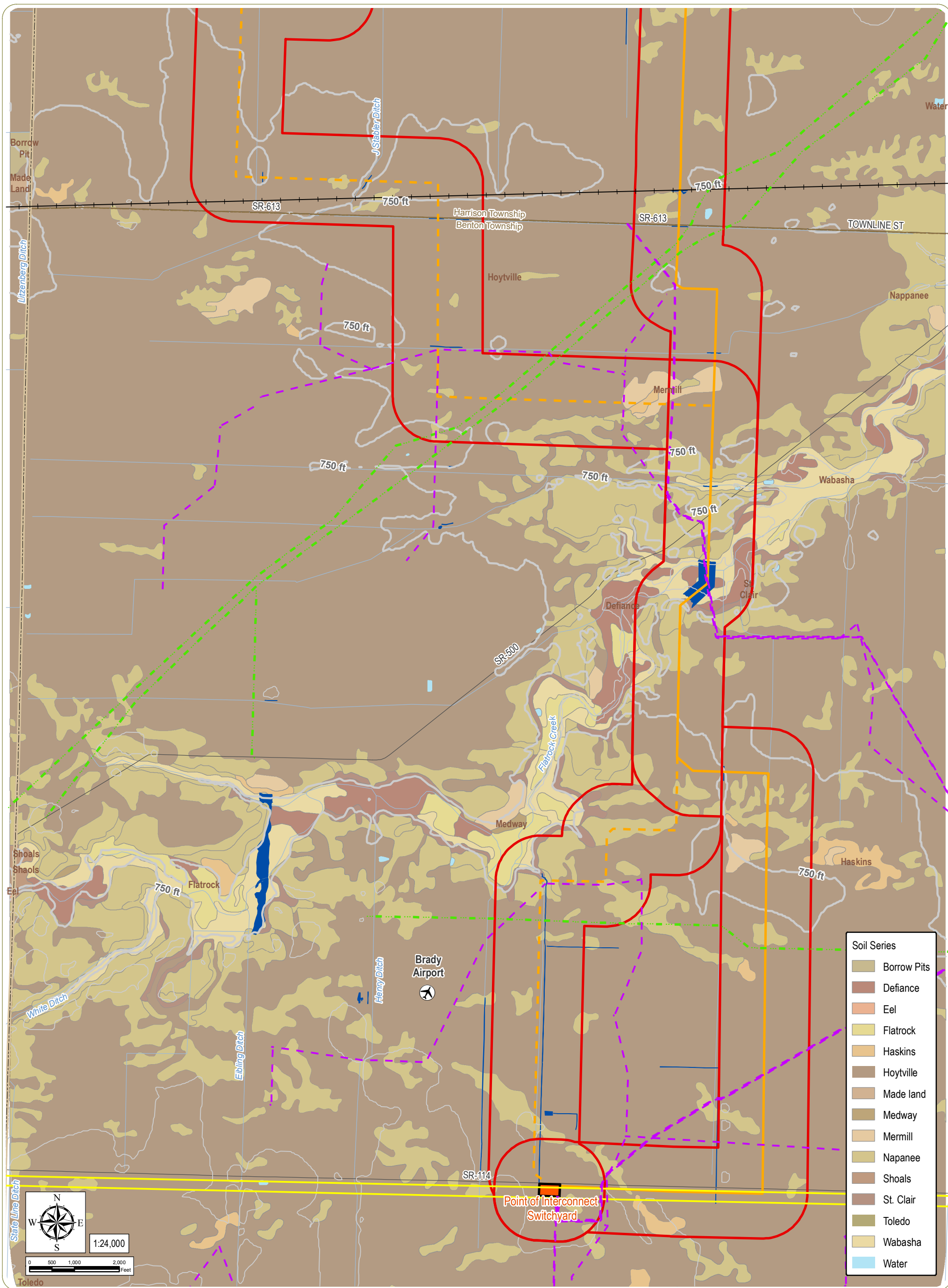
- Notes:** 1. Basemap: ESRI StreetMap North America, 2012; OHIO DOT public road data; NRCS SSURGO Database.
2. This is a color graphic. Reproduction in grayscale may misrepresent the data.
3. The collection substation is part of separate applications in Case Nos. 15-2030-EL-BGA and 15-2031-EL-BGA.
4. The applicant will not have any proposed permanent access roads, therefore zero are depicted within the map.

- 50 ft Topographic Contour
- 10 ft Topographic Contour
- Primary Transmission Line Route
- Alternate Transmission Line Route

- Existing Timber Road II Underground Collection Line
- Panhandle Eastern Pipeline
- Transmission Line
- Norfolk Railroad
- Substation/Switchyard

- 1,000 ft Study Area
- Delineated Stream/Wetland
- Stream, River, or Lake
- County Boundary
- Town Boundary





Timber Road III Transmission Line

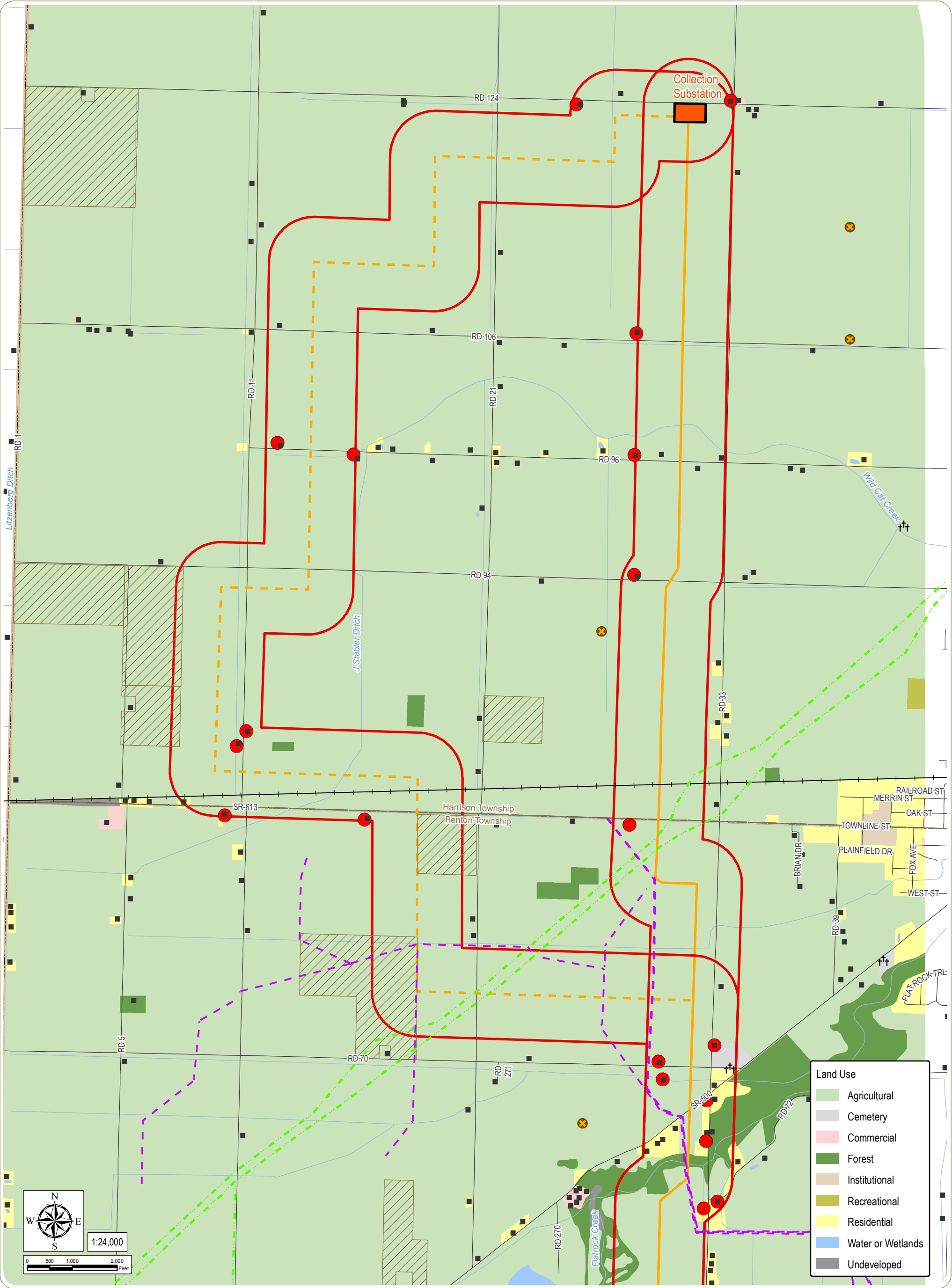
Harrison and Benton Townships - Paulding County, Ohio

Figure 04-1: Geography and Topography - Sheet 2 of 2

December 2015

Notes: 1. Basemap: ESRI StreetMap North America, 2012; OHIO DOT public road data; NRCS SSURGO Database.
2. This is a color graphic. Reproduction in grayscale may misrepresent the data.
3. The collection substation is part of separate applications in Case Nos. 15-2030-EL-BGA and 15-2031-EL-BGA.
4. The applicant will not have any proposed permanent access roads, therefore zero are depicted within the map.





Timber Road III Transmission Line
Harrison and Benton Townships - Paulding County, Ohio

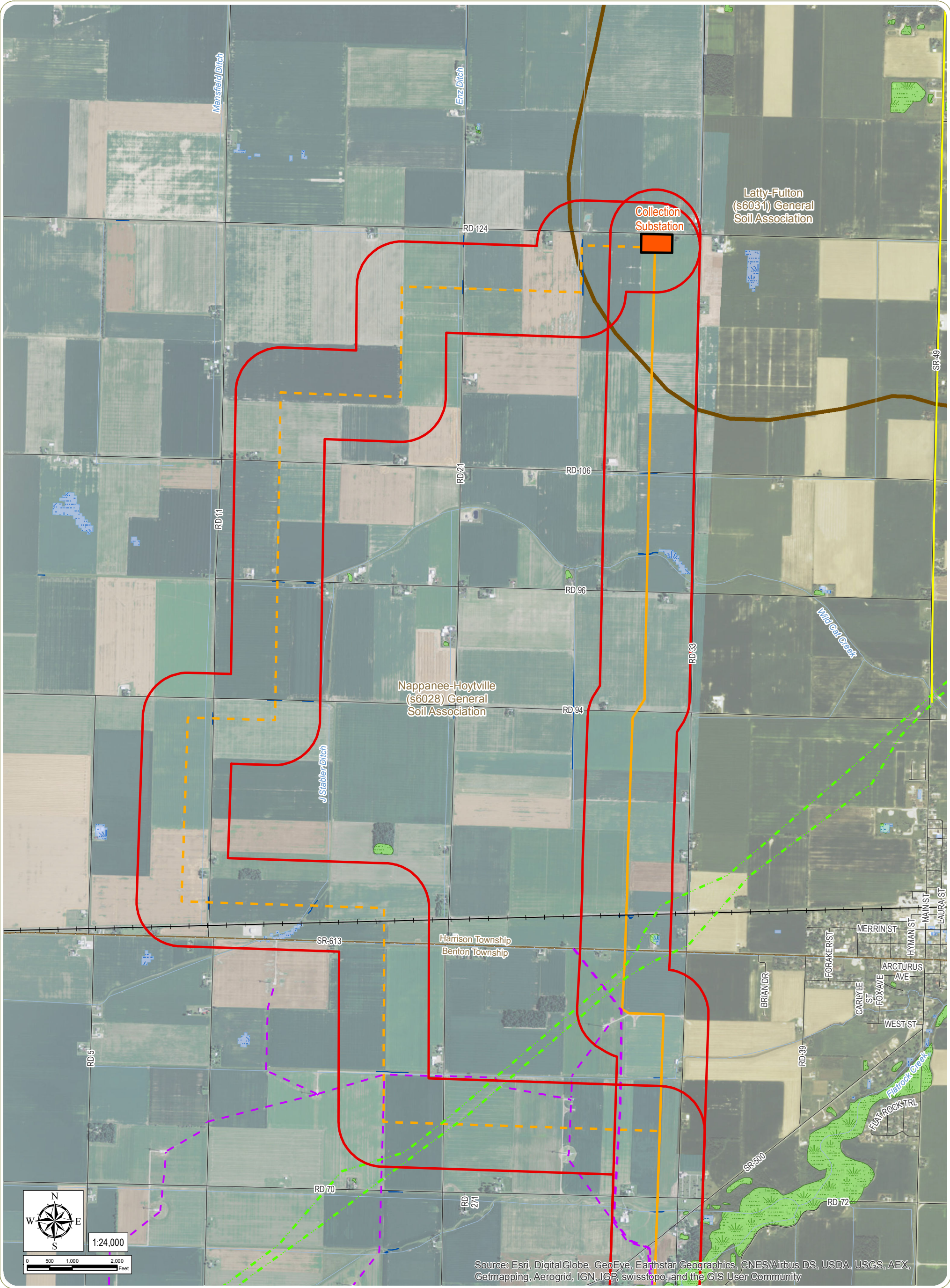
Figure 06-1: Land Use - Sheet 1 of 2

December 2015

Notes: 1. Basemap: ESRI StreetMap North America, 2012; OHIO DOT public road data; Paulding County Land Use/Land Cover 1994-95.
2. This is a color graphic. Reproduction in grayscale may misrepresent the data.
3. The collection substation is part of separate applications in Case Nos. 15-2030-EL-BGA and 15-2031-EL-BGA.

- | | | |
|-----------------------------------|---------------------------------------------------------|-------------------------|
| †† Cemetery | --- Panhandle Eastern Pipeline | — Public Road |
| ● OHI Site | — Transmission Line | ▨ Agricultural District |
| ⊗ Prehistoric Archaeological Site | --- Existing Timber Road II Underground Collection Line | ▢ Substation/Switchyard |
| ■ Residence | — Primary Transmission Line Route | ▢ 1,000 ft Study Area |
| — Norfolk Railroad | --- Alternate Transmission Line Route | ▢ Town Boundary |
| | | ▢ County Boundary |





Timber Road III Transmission Line
Harrison and Benton Townships - Paulding County, Ohio

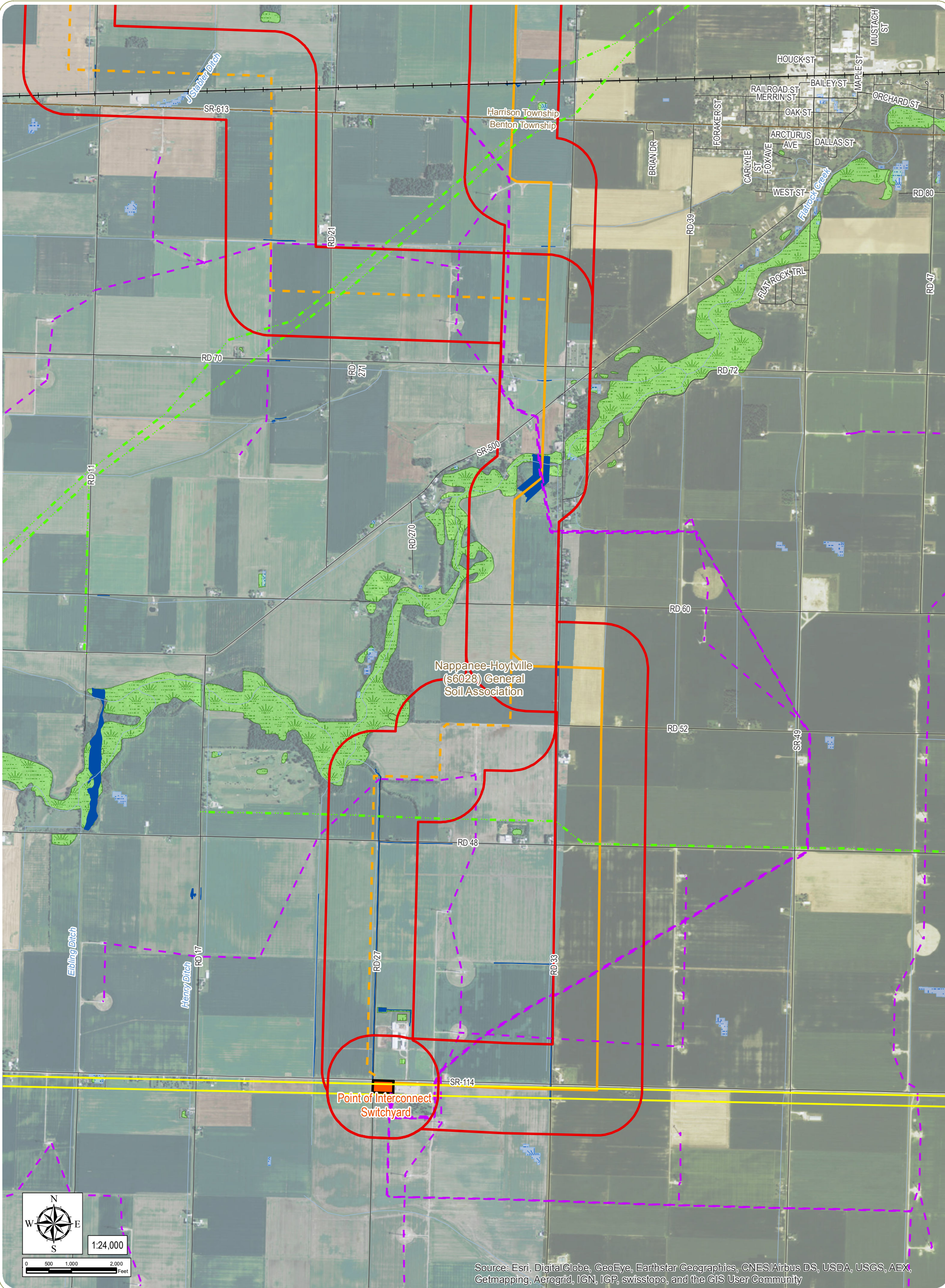
Figure 07-1: Ecological Features - Sheet 1 of 2

December 2015

Notes: 1. Basemap: ESRI ArcGIS Online "World Imagery" Map Service.
2. This is a color graphic. Reproduction in grayscale may misrepresent the data.
3. The collection substation is part of separate applications in Case Nos. 15-2030-EL-BGA and 15-2031-EL-BGA.

- | | | |
|-----------------------------------|-----------------------------|------------------------|
| Public Road | Panhandle Eastern Pipeline | Stream, River, or Lake |
| Norfolk Railroad | Existing Timber Road II | Ohio Wetland Inventory |
| Primary Transmission Line Route | Underground Collection Line | NWI Wetland |
| Alternate Transmission Line Route | Substation/Switchyard | 1,000 ft Study Area |
| Transmission Line | General Soil Association | Town Boundary |
| | Delineated Stream/Wetland | County Boundary |





Timber Road III Transmission Line
Harrison and Benton Townships - Paulding County, Ohio

Figure 07-1: Ecological Features - Sheet 2 of 2

December 2015

Notes: 1. Basemap: ESRI ArcGIS Online "World Imagery" Map Service.
2. This is a color graphic. Reproduction in grayscale may misrepresent the data.
3. The collection substation is part of separate applications in Case Nos. 15-2030-EL-BGA and 15-2031-EL-BGA.

- | | | |
|-------------------------------------|-------------------------------------------------------|------------------------|
| — Public Road | — Panhandle Eastern Pipeline | Stream, River, or Lake |
| — Norfolk Railroad | — Existing Timber Road II Underground Collection Line | Ohio Wetland Inventory |
| — Primary Transmission Line Route | — Substation/Switchyard | NWI Wetland |
| — Alternate Transmission Line Route | — General Soil Association | 1,000 ft Study Area |
| — Transmission Line | — Delineated Stream/Wetland | Town Boundary |
| | | County Boundary |



This foregoing document was electronically filed with the Public Utilities

Commission of Ohio Docketing Information System on

12/8/2015 3:10:50 PM

in

Case No(s). 15-1737-EL-BTX

Summary: Application figures electronically filed by Mr. Michael J. Settineri on behalf of Paulding Wind Farm III LLC