

This map and all data contained within are supplied as is with no warranty. Cardno ENTRIX expressly disclaims responsibility for damages or liability from any claims that may arise out of the use or misuse of this map. It is the sole responsibility of the user to determine if the data on this map meets the user's needs. This map was not created as survey data, nor should it be used as such. It is the user's responsibility to obtain proper survey data, prepared by a licensed surveyor, where required by law.

Legend

- Proposed Turbine Location
- Proposed Turbine Location
- Proposed Access Road
- Proposed Underground Collection
- Proposed Access Road
- Proposed Underground Collection
- Proposed Substation
- Proposed Substation
- Proposed Additional Project Corridor
- Permitted Project Corridor
- Permitted Laydown Yards
- Project Boundary
- County Boundary
- Township Boundary
- City Boundary
- USGS NHD Streams
- Existing Railroad
- Fully Hydric Soils
- Inaccessible Properties
- Field Delineated Waterbodies * **SOH-ADxx**
- Field Delineated Wetlands * **WOH-ADxx**
- NWI Wetlands Outside Project Corridor
- Additional Potential Wetlands Areas Denoted by Ohio DNR

Scioto Ridge Wind Farm
Amended Figure 4 - Wetlands - Sheet 5 of 7

Hardin and Logan Counties, Ohio

Data Source(s)
Everpower (2012)
Wetlands: Cardno ENTRIX (2012), Ohio DNR Wetlands Inventory (1991), USFWS (1979)
Soils: USDA-NRCS (2012) County, City, Township Boundaries, Railroads ESRI Data and Maps (2008)
Roads: U.S. Census Bureau Tiger Files (2012)
USGS National Hydrography Dataset

* Only wetlands and waterbodies within the Proposed Additional Project Corridor are labeled on this map.

6 Miles
6 Kilometers

Allen County	Hardin County
Auglaize County	Sheet 2 Sheet 3
	Sheet 4 Sheet 5
	Sheet 6 Sheet 7
Logan County	
Union County	

Image: 2011

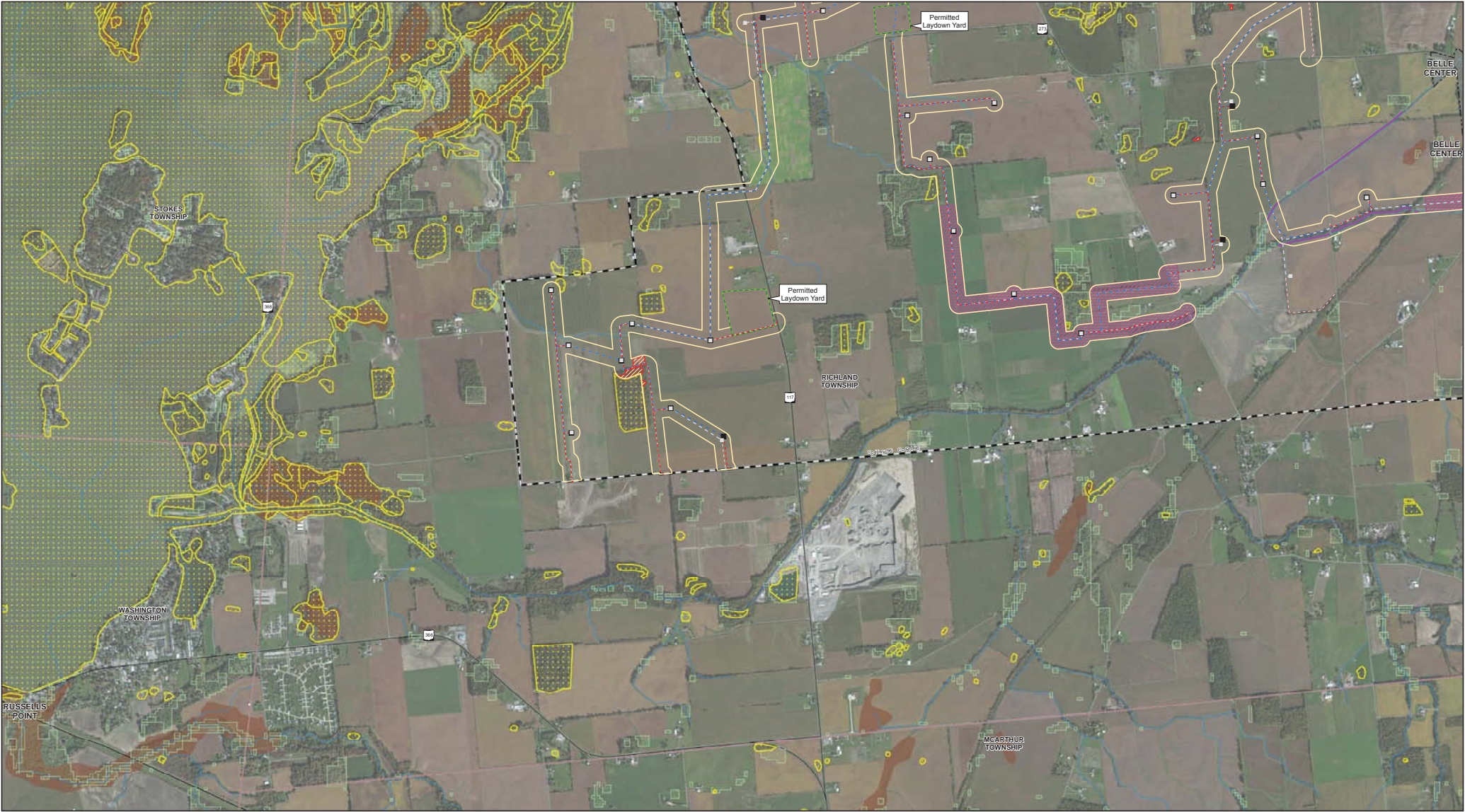
Cardno ENTRIX

10 Corporate Circle, Suite 300
New Castle, DE 19720

ph. (302) 395-1919
fx. (302) 395-1920

www.cardnoentrix.com

Map Created: 8/11/2014



This map and all data contained within are supplied as is with no warranty. Cardno ENTRIX expressly disclaims responsibility for damages or liability from any claims that may arise out of the use or misuse of this map. It is the sole responsibility of the user to determine if the data on this map meets the user's needs. This map was not created as survey data, nor should it be used as such. It is the user's responsibility to obtain proper survey data, prepared by a licensed surveyor, where required by law.

Legend

- Permitted Turbine Location
- Proposed Turbine Location
- Proposed Access Road
- Proposed Underground Collection
- Permitted Access Road
- Permitted Underground Collection
- Proposed Substation
- Permitted Substation
- Proposed Additional Project Corridor
- Permitted Project Corridor
- Permitted Laydown Yards
- Project Boundary
- County Boundary
- Township Boundary
- City Boundary
- USGS NHD Streams
- Existing Railroad
- Fully Hydric Soils
- Inaccessible Properties
- Field Delineated Waterbodies * **SOH-ADxx**
- Field Delineated Wetlands * **WOH-ADxx**
- NWI Wetlands Outside Project Corridor
- Additional Potential Wetlands Areas Denoted by Ohio DNR

Scioto Ridge Wind Farm
Amended Figure 4 - Wetlands - Sheet 6 of 7

Hardin and Logan Counties, Ohio

Cardno ENTRIX
10 Corporate Circle, Suite 300
New Castle, DE 19720
ph (302) 395-1919
fx (302) 395-1920
www.cardnoentrix.com
Map Created: 8/11/2014

Map Index

Allen County	Sheet 2	Sheet 3
Auglaize County	Sheet 4	Sheet 5
Logan County	Sheet 6	Sheet 7

Hardin County

Union County

Data Source(s):
Everpower (2012)
Wetlands: Cardno ENTRIX (2012), Ohio DNR Wetlands Inventory (1991), USFWS (1979)
Soils: USDA-NRCS (2012) County, City, Township Boundaries, Railroad ESRI Data and Maps (2008)
Roads: U.S. Census Bureau Tiger Files (2012)
USGS National Hydrography Dataset

* Only wetlands and waterbodies within the Proposed Additional Project Corridor are labeled on this map.

This foregoing document was electronically filed with the Public Utilities

Commission of Ohio Docketing Information System on

9/12/2014 9:12:00 AM

in

Case No(s). 14-1557-EL-BGA

Summary: Application to Amend -- Exhibit D (Part 23 of 31) electronically filed by Mrs. Gretchen L. Petrucci on behalf of Hardin Wind LLC