



Scioto Ridge Wind Farm

Roundhead, McDonald, Taylor Creek and Lynn Townships - Hardin County, Ohio. Richland and Rushcreek Townships - Logan County, Ohio.

Figure 08-1: Ecological Features

Sheet 1 of 6

September 2014

- Wind Turbine
- Met Tower
- Collection Line
- Access Road
- Collector Substation
- Laydown Yard
- 0.5-Mile Radius
- Delineated Stream/Wetland
- Ohio Wetland Inventory
- 100-Year Floodplain
- Golf Course
- Local Park
- State Nature Preserve
- State Park
- Town Boundary
- County Boundary

Notes:
1. Base Map: NAIP 1-meter resolution orthoimagery, 2011.
2. Delineated wetlands and streams provided by Cardno ENTRIX. Facility shapefiles provided by Applicant. Other data obtained from public sources by EDR.
3. Map Scale: 1:24,000

everpower



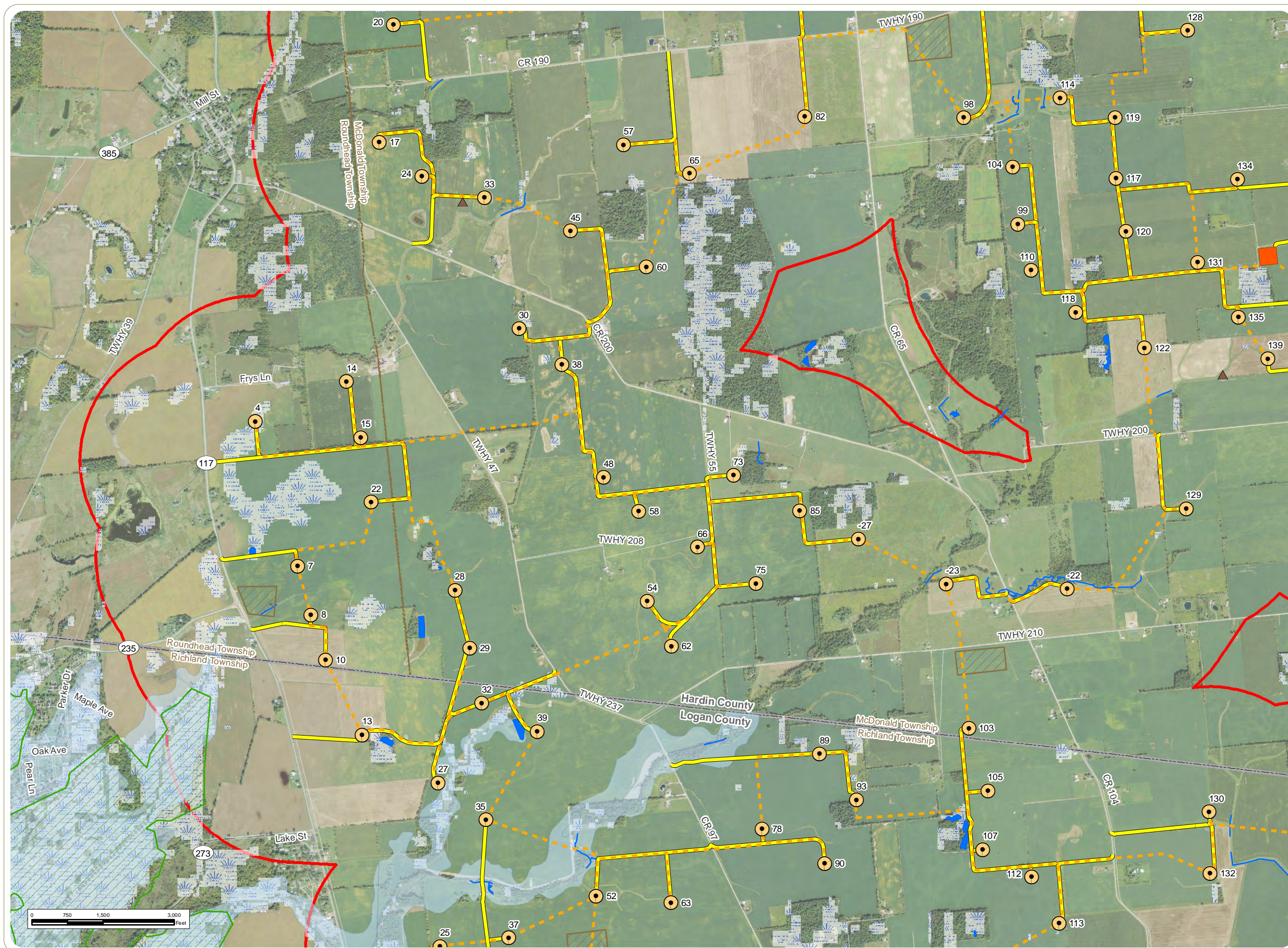
**Scioto Ridge
Wind Farm**
Roundhead, McDonald,
Taylor Creek and Lynn
Townships - Hardin County,
Ohio. Richland and
Rushcreek Townships -
Logan County, Ohio.

Figure 08-1: Ecological
Features
Sheet 2 of 6
September 2014

- Wind Turbine
- Met Tower
- Collection Line
- Access Road
- Collector Substation
- Laydown Yard
- 0.5-Mile Radius
- Delineated Stream/Wetland
- Ohio Wetland Inventory
- 100-Year Floodplain
- Golf Course
- Local Park
- State Nature Preserve
- State Park
- Town Boundary
- County Boundary

Notes:
1. Base Map: NAIP 1-meter resolution
orthoimagery, 2011.
2. Delineated wetlands and streams
provided by Cardno ENTRIX. Facility
shapefiles provided by Applicant. Other
data obtained from public sources by EDR.
3. Map Scale: 1:24,000





**Scioto Ridge
Wind Farm**

Roundhead, McDonald,
Taylor Creek and Lynn
Townships - Hardin County,
Ohio. Richland and
Rushcreek Townships -
Logan County, Ohio.

Figure 08-1: Ecological
Features
Sheet 3 of 6
September 2014

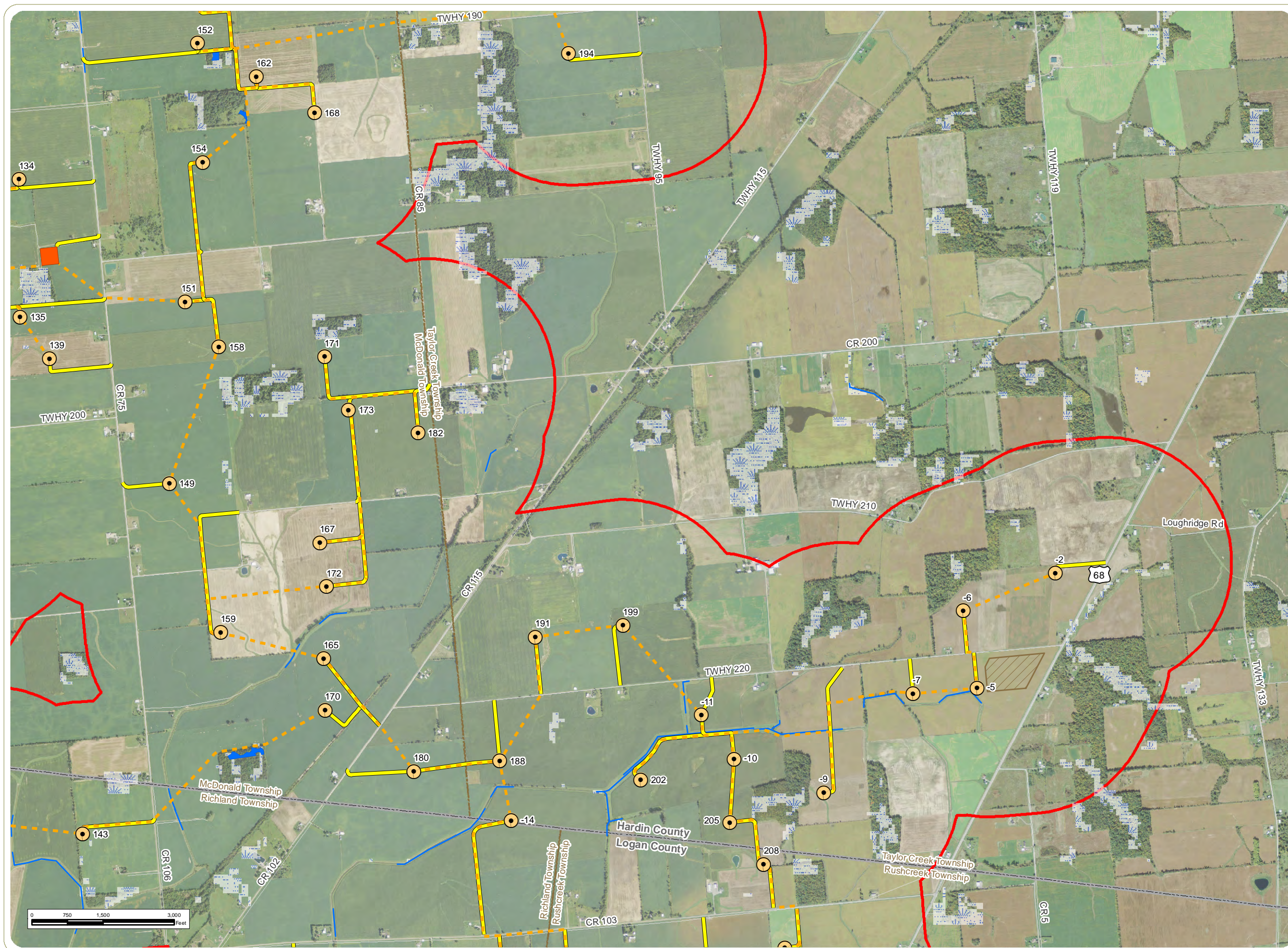
- Wind Turbine
- Met Tower
- Collection Line
- Access Road
- Collector Substation
- Laydown Yard
- 0.5-Mile Radius
- Delineated Stream/Wetland
- Ohio Wetland Inventory
- 100-Year Floodplain
- Golf Course
- Local Park
- State Nature Preserve
- State Park
- Town Boundary
- County Boundary

Notes:

1. Base Map: NAIP 1-meter resolution orthoimagery, 2011.
2. Delineated wetlands and streams provided by Cardno ENTRIX. Facility shapefiles provided by Applicant. Other data obtained from public sources by EDR.
3. Map Scale: 1:24,000



www.edrdpc.com



**Scioto Ridge
Wind Farm**
Roundhead, McDonald,
Taylor Creek and Lynn
Townships - Hardin County,
Ohio. Richland and
Rushcreek Townships -
Logan County, Ohio.

Figure 08-1: Ecological
Features
Sheet 4 of 6
September 2014

- Wind Turbine
- Met Tower
- Collection Line
- Access Road
- Collector Substation
- Laydown Yard
- 0.5-Mile Radius
- Delineated Stream/Wetland
- Ohio Wetland Inventory
- 100-Year Floodplain
- Golf Course
- Local Park
- State Nature Preserve
- State Park
- Town Boundary
- County Boundary









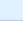




Notes:
1. Base Map: NAIP 1-meter resolution
orthoimagery, 2011.
2. Delineated wetlands and streams
provided by Cardno ENTRIX. Facility
shapefiles provided by Applicant. Other
data obtained from public sources by EDR.
3. Map Scale: 1:24,000



www.edrdpc.com

Roundhead, McDonald,
Taylor Creek and Lynn
Townships - Hardin County,
Ohio. Richland and
Rushcreek Townships -
Logan County, Ohio.

Sheet 5 of 6

-  Wind Turbine
-  Met Tower
-  Collection Line
-  Access Road
-  Collector Substation
-  Laydown Yard
-  0.5-Mile Radius
-  Delineated Stream/Wetland
-  Ohio Wetland Inventory
-  100-Year Floodplain
-  Golf Course
-  Local Park
-  State Nature Preserve
-  State Park
-  Town Boundary
-  County Boundary

everpower



This foregoing document was electronically filed with the Public Utilities

Commission of Ohio Docketing Information System on

9/11/2014 3:36:31 PM

in

Case No(s). 14-1557-EL-BGA

Summary: Application to Amend -- Figure 08-1 electronically filed by Mrs. Gretchen L. Petrucci
on behalf of Hardin Wind LLC