



Scioto Ridge Wind Farm

Roundhead, McDonald,
Taylor Creek and Lynn
Townships - Hardin County,
Ohio. Richland and
Rushcreek Townships -
Logan County, Ohio.

Figure 05-4: Site Layout
Sheet 13 of 15
September 2014

Amendment Layout

- Wind Turbine
- Collection Line
- Access Road
- Collector Substation

Application Layout

- Wind Turbine
- Collection Line
- Access Road
- Collector Substation

Unchanged

- Wind Turbine
- Collection Line
- Access Road

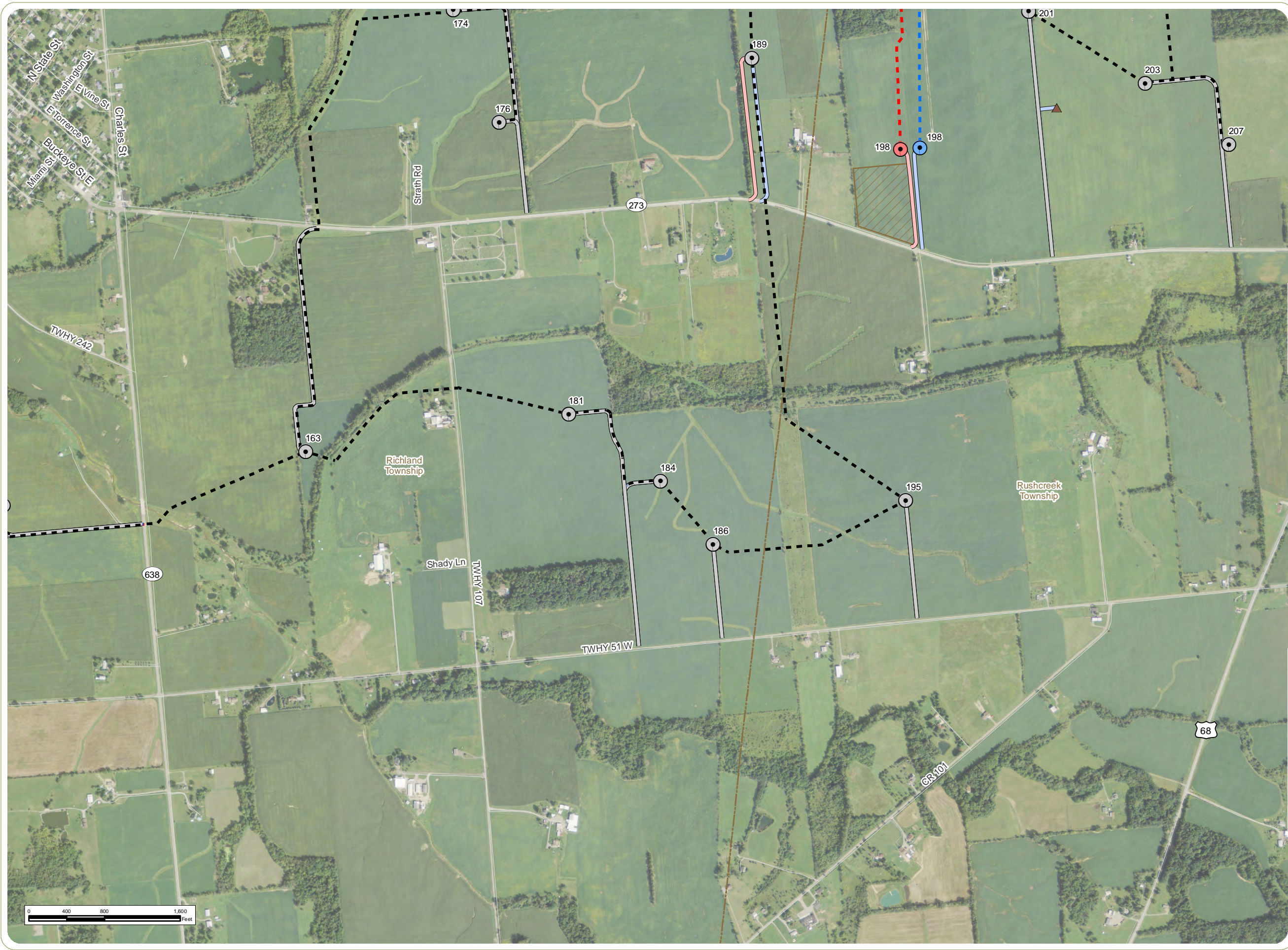
- Met Tower
- Laydown Yard
- Town Boundary
- County Boundary

Notes:
1. Base Map: NAIP 1-meter resolution
orthoimagery, 2011.
2. Facility shapefiles provided by Applicant.
3. Map Scale: 1:12,000

everpower



www.edrdpc.com



Scioto Ridge Wind Farm

Roundhead, McDonald,
Taylor Creek and Lynn
Townships - Hardin County,
Ohio. Richland and
Rushcreek Townships -
Logan County, Ohio.

Figure 05-4: Site Layout

Sheet 14 of 15

September 2014

Amendment Layout

- Wind Turbine
- Collection Line
- Access Road
- Collector Substation

Application Layout

- Wind Turbine
- Collection Line
- Access Road
- Collector Substation

Unchanged

- Wind Turbine
- Collection Line
- Access Road

- Met Tower
- Laydown Yard
- Town Boundary
- County Boundary

Notes:
1. Base Map: NAIP 1-meter resolution
orthoimagery, 2011.
2. Facility shapefiles provided by Applicant.
3. Map Scale: 1:12,000

everpower



www.edrdpc.com

This foregoing document was electronically filed with the Public Utilities

Commission of Ohio Docketing Information System on

9/11/2014 3:28:24 PM

in

Case No(s). 14-1557-EL-BGA

Summary: Application to Amend -- Figure 05-4, Part 7 of 8 electronically filed by Mrs. Gretchen L. Petrucci on behalf of Hardin Wind LLC