

PROJECT LOCATION

HARRISON AND
JEFFERSON COUNTIES, OHIO

LEGEND

Map Index Page

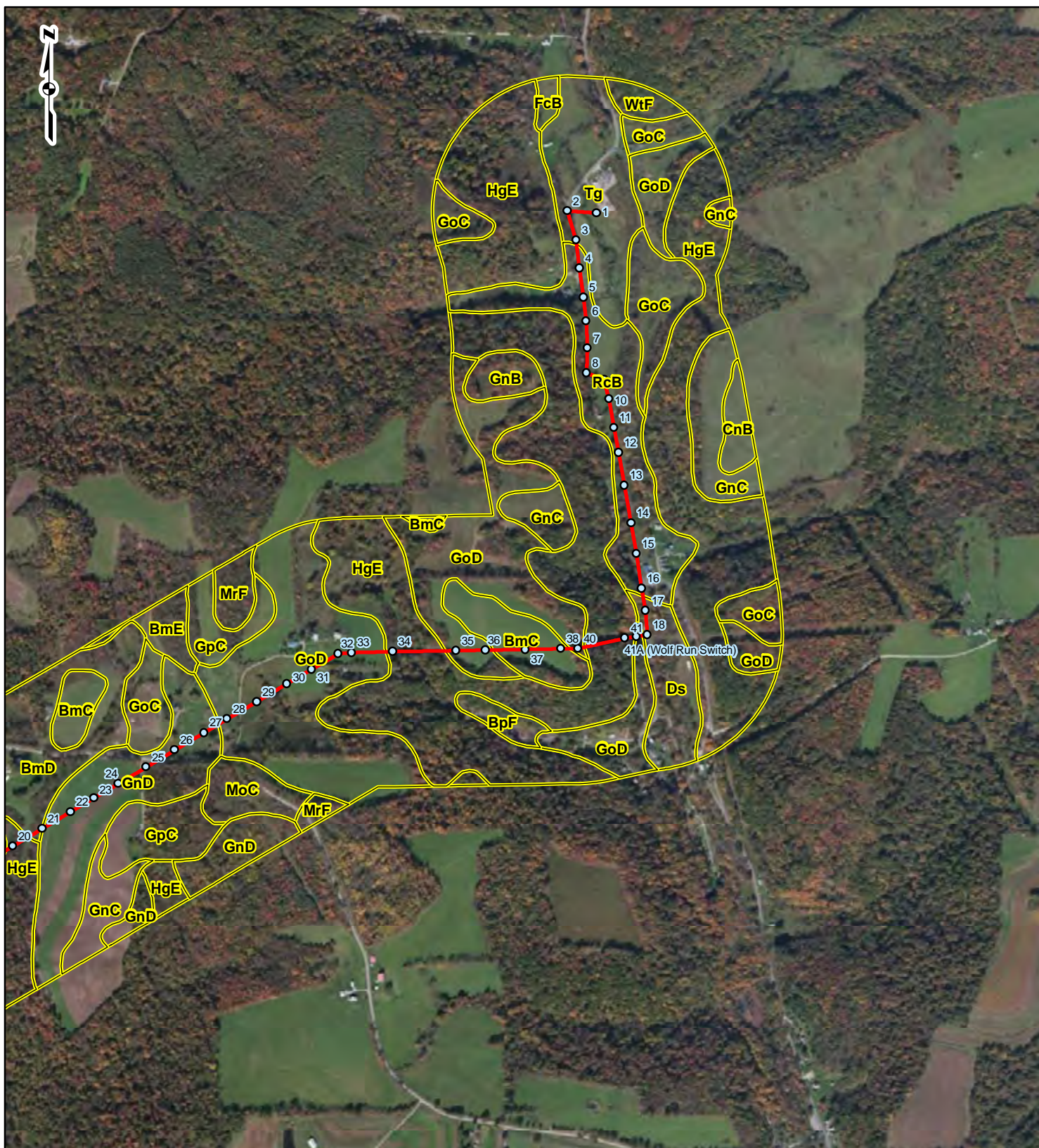
Existing/Proposed Transmission Line

0 0.75 1.5 3
Miles

**FIGURE 3
MAP INDEX**

EAST AMSTERDAM - MILLER SWITCH
138 kV REBUILD PROJECT
AEP

DRAWN BY: TER DATE: 5/15/2014
CHECKED: MAF APPROVED: MAF



PROJECT LOCATION



JEFFERSON AND
HARRISON COUNTIES, OHIO.

LEGEND

- Existing/Proposed Transmission Line
- Existing Structure
- Soil Map Unit

0 500 1,000 2,000
Feet

FIGURE 3 SOILS MAP SHEET 1 OF 6

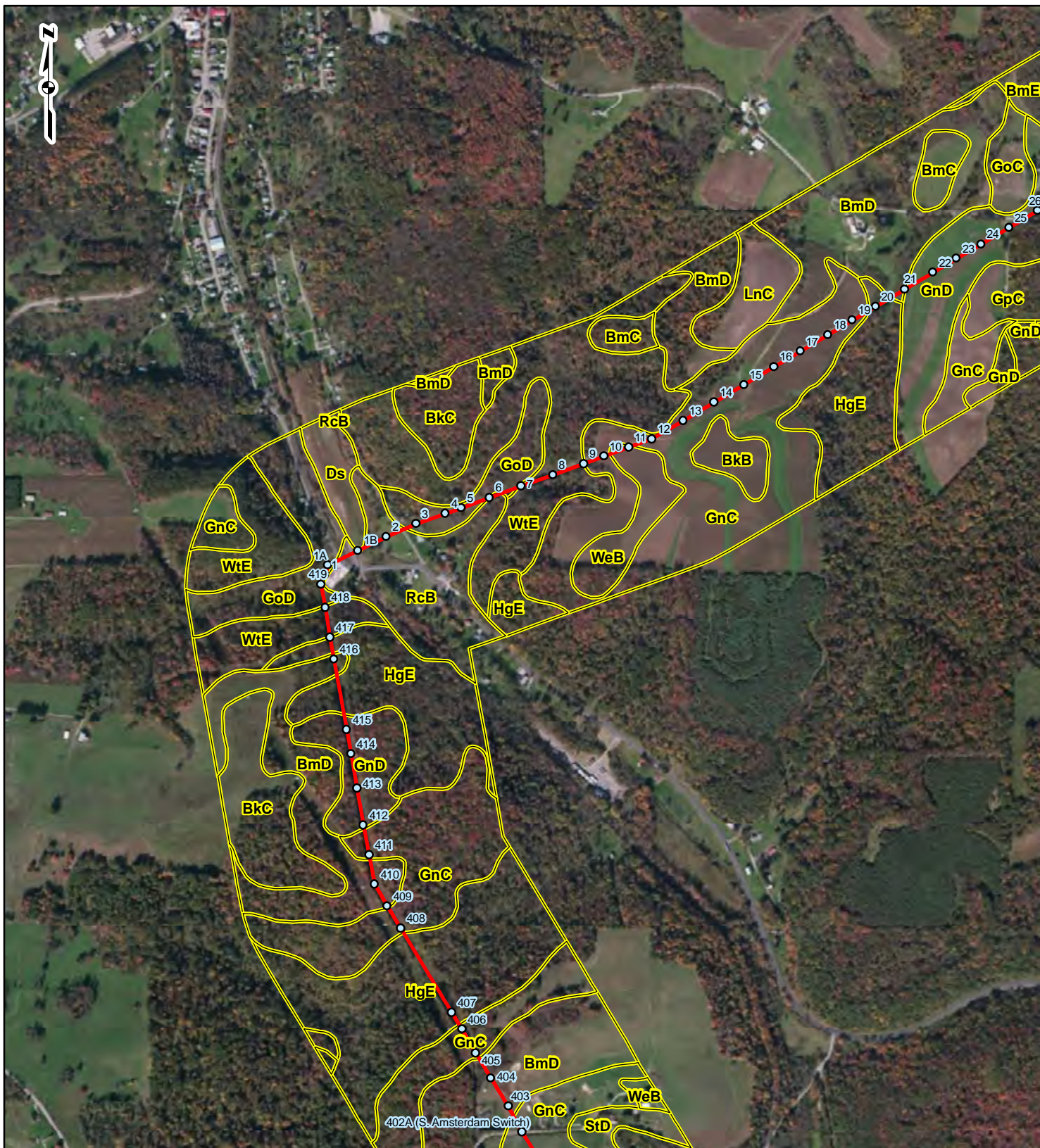
EAST AMSTERDAM - MILLER SWITCH
138 kV REBUILD PROJECT
AEP

DRAWN BY: TER
CHECKED: MAF

DATE: 5/15/2014
APPROVED: MAF

REFERENCE: WORLD IMAGERY 2012, ESRI, MICROSOFT CORPORATION AND ITS DATA SUPPLIERS, ACCESSED 5/2014.

P:\CIN\GIS\Projects\AEP_East_Amsterdam_Miller\mxd\Figure3_Soils_map.mxd



PROJECT LOCATION



JEFFERSON AND
HARRISON COUNTIES, OHIO.

LEGEND

- Existing/Proposed Transmission Line
- Existing Structure
- Soil Map Unit

0 500 1,000 2,000
Feet

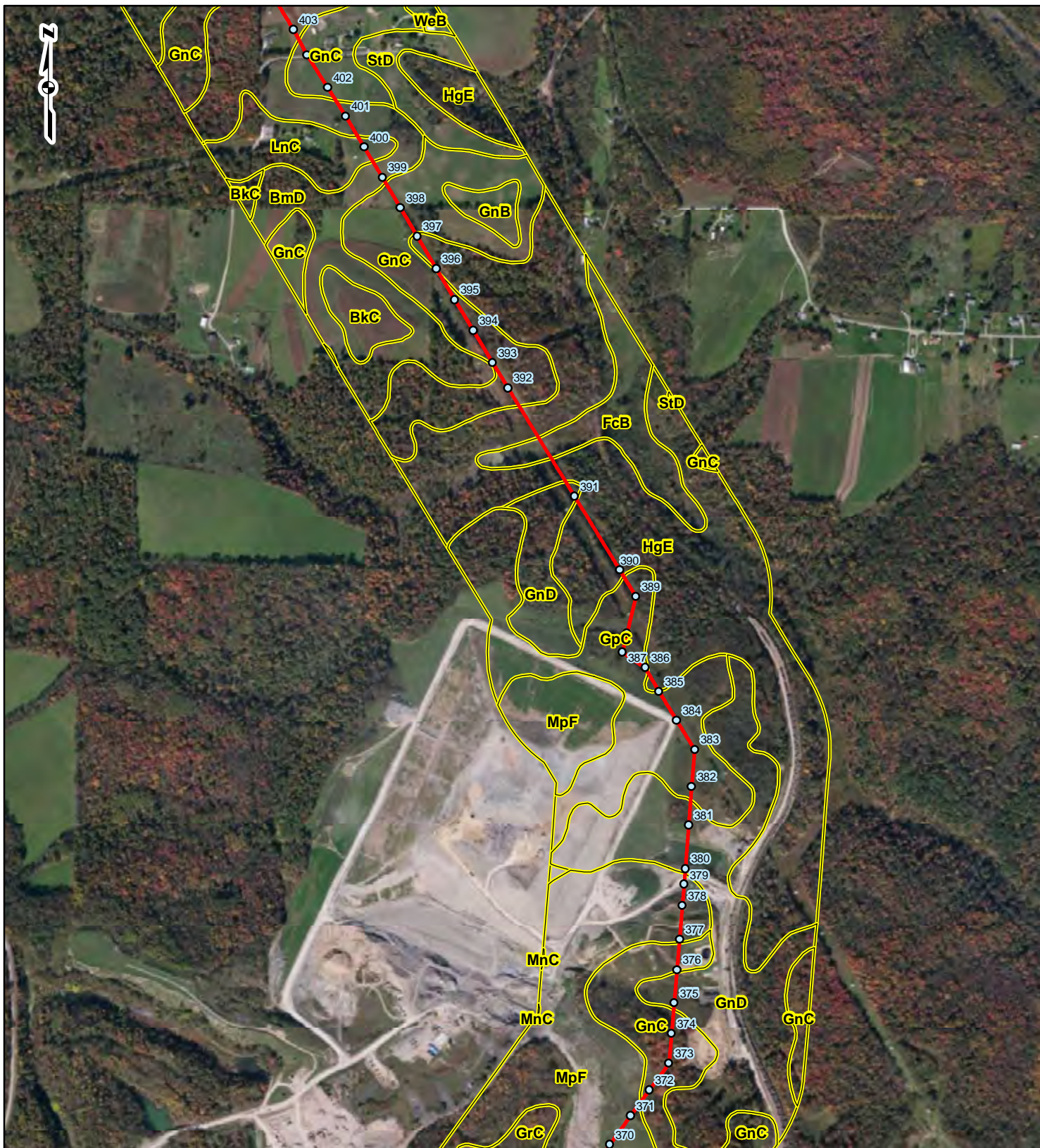
FIGURE 3 SOILS MAP SHEET 2 OF 6

EAST AMSTERDAM - MILLER SWITCH
138 kV REBUILD PROJECT
AEP

DRAWN BY: TER
CHECKED: MAF

DATE: 5/15/2014
APPROVED: MAF

REFERENCE: WORLD IMAGERY 2012, ESRI, MICROSOFT CORPORATION AND ITS DATA SUPPLIERS, ACCESSED 5/2014.



PROJECT LOCATION



JEFFERSON AND
HARRISON COUNTIES, OHIO.

LEGEND

- Existing/Proposed Transmission Line
- Existing Structure
- Soil Map Unit

0 500 1,000 2,000
Feet

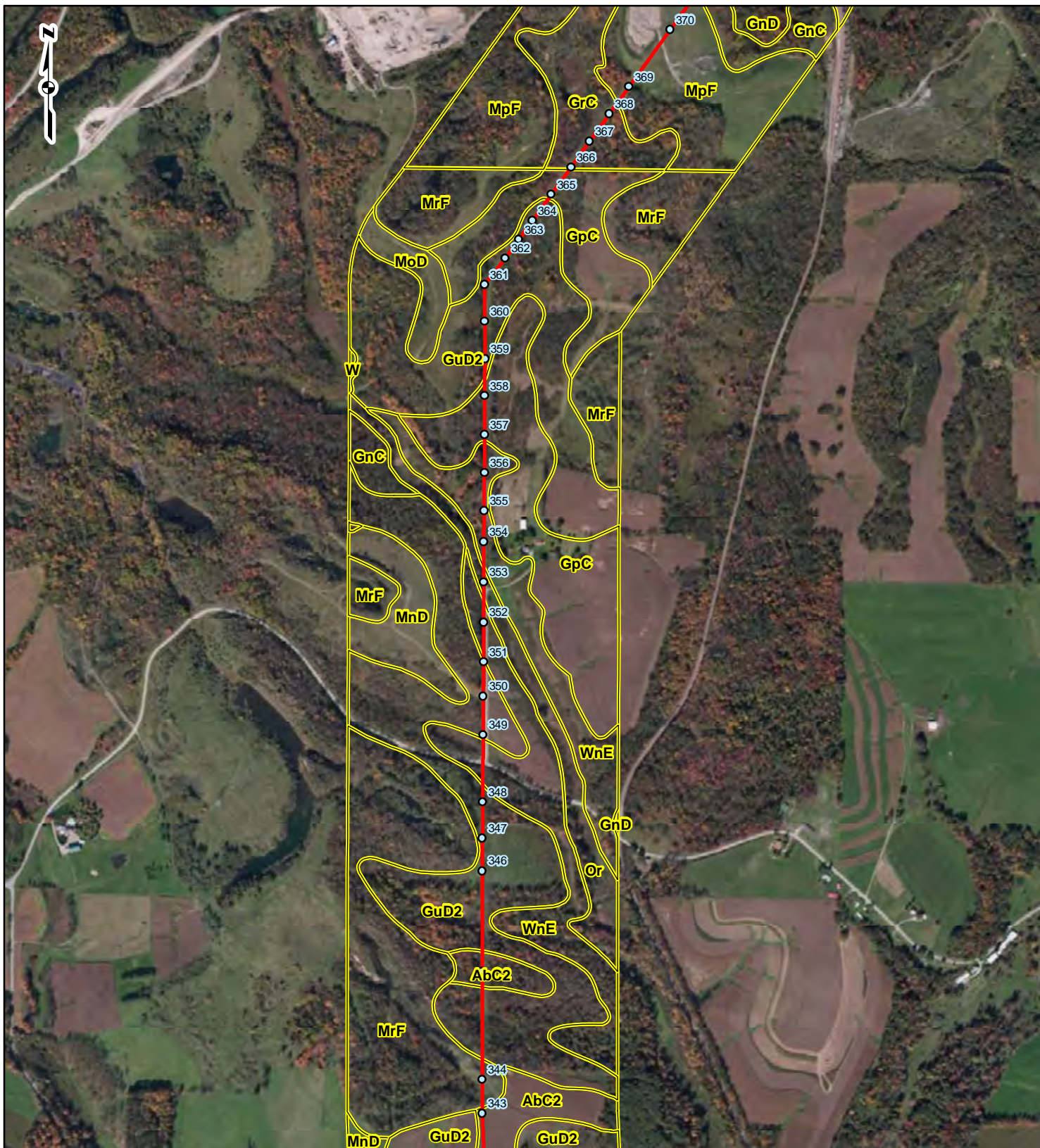
FIGURE 3 SOILS MAP SHEET 3 OF 6

EAST AMSTERDAM - MILLER SWITCH
138 kV REBUILD PROJECT
AEP

DRAWN BY: TER
CHECKED: MAF

DATE: 5/15/2014
APPROVED: MAF

REFERENCE: WORLD IMAGERY 2012, ESRI, MICROSOFT CORPORATION AND ITS DATA SUPPLIERS, ACCESSED 5/2014.



PROJECT LOCATION



JEFFERSON AND
HARRISON COUNTIES, OHIO.

LEGEND

- Existing/Proposed Transmission Line
- Existing Structure
- Soil Map Unit

0 500 1,000 2,000
Feet

FIGURE 3
SOILS MAP
SHEET 4 OF 6

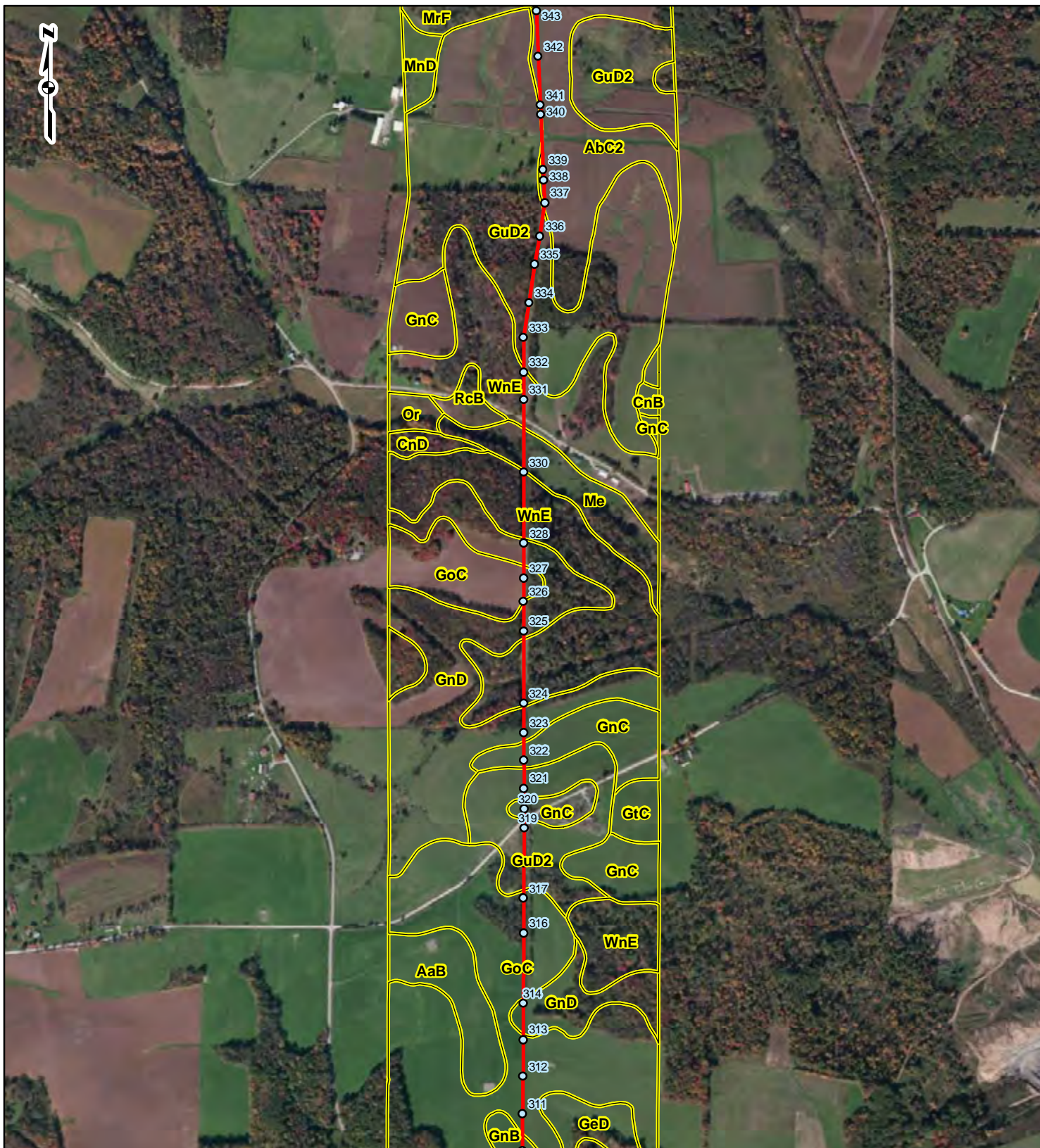
EAST AMSTERDAM - MILLER SWITCH
138 kV REBUILD PROJECT
AEP

DRAWN BY: TER
CHECKED: MAF

DATE: 5/15/2014
APPROVED: MAF

REFERENCE: WORLD IMAGERY 2012, ESRI, MICROSOFT CORPORATION AND ITS DATA SUPPLIERS, ACCESSED 5/2014.

P:\CIN\GIS\Projects\AEP_East_Amsterdam_Miller\mxd\Figure3_Soils_map.mxd



PROJECT LOCATION



JEFFERSON AND
HARRISON COUNTIES, OHIO.

LEGEND

- Existing/Proposed Transmission Line
- Existing Structure
- Soil Map Unit

0 500 1,000 2,000
Feet

FIGURE 3 SOILS MAP SHEET 5 OF 6

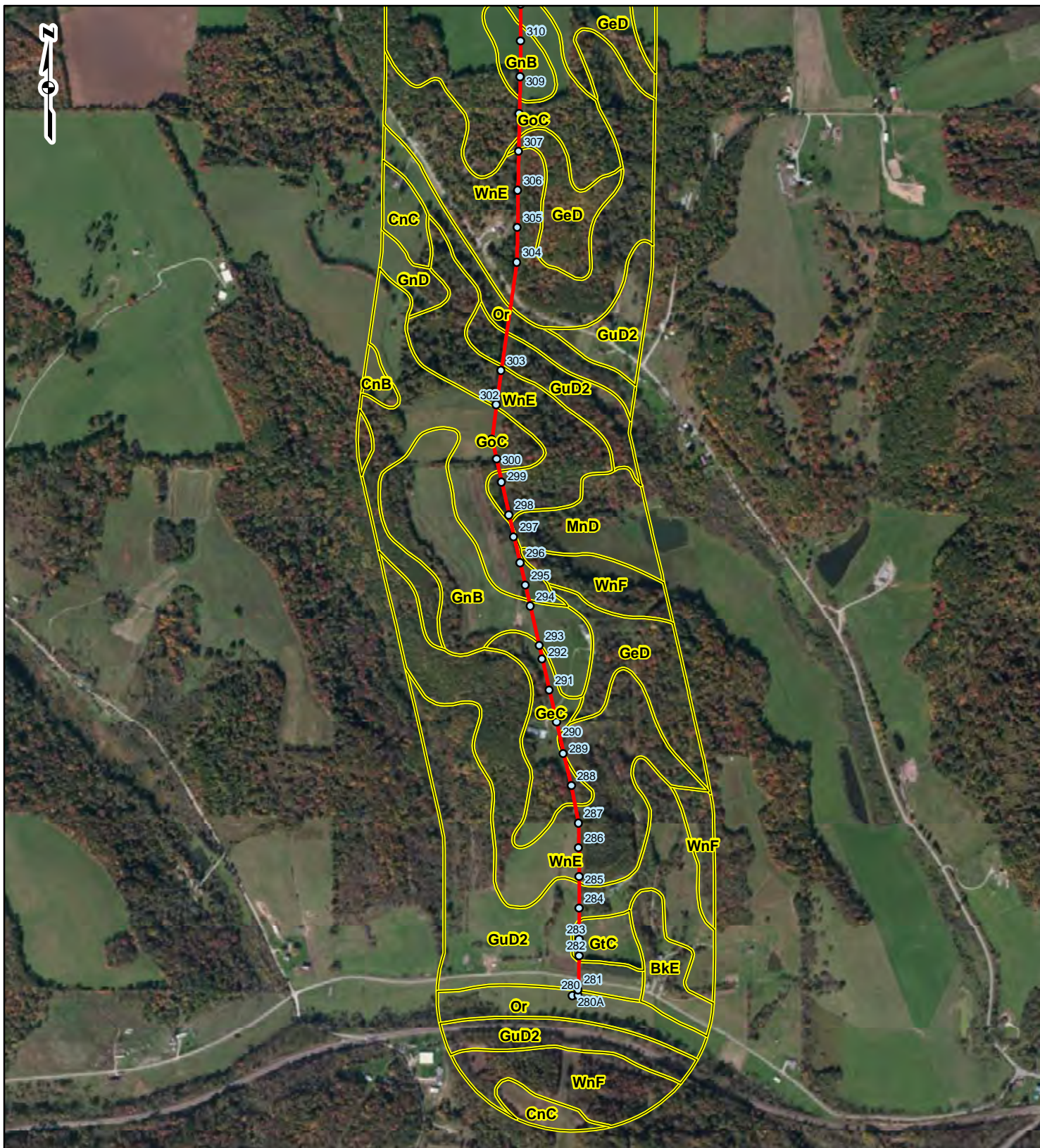
EAST AMSTERDAM - MILLER SWITCH
138 kV REBUILD PROJECT
AEP

DRAWN BY: TER
CHECKED: MAF

DATE: 5/15/2014
APPROVED: MAF

REFERENCE: WORLD IMAGERY 2012, ESRI, MICROSOFT CORPORATION AND ITS DATA SUPPLIERS, ACCESSED 5/2014.

P:\CIN\GIS\Projects\AEP_East_Amsterdam_Miller\mxd\Figure3_Soils_map.mxd



PROJECT LOCATION



JEFFERSON AND
HARRISON COUNTIES, OHIO.

LEGEND

- Existing/Proposed Transmission Line
- Existing Structure
- Soil Map Unit

0 500 1,000 2,000
Feet

FIGURE 3
SOILS MAP
SHEET 6 OF 6

EAST AMSTERDAM - MILLER SWITCH
138 kV REBUILD PROJECT
AEP

DRAWN BY: TER
CHECKED: MAF

DATE: 5/15/2014
APPROVED: MAF

REFERENCE: WORLD IMAGERY 2012, ESRI, MICROSOFT CORPORATION AND ITS DATA SUPPLIERS, ACCESSED 5/2014.

PHOTOGRAPHS

Wetland Delineation and Stream Identification Report
AEP, East Amsterdam – Miller Switch 138 kV Rebuild Project – Harrison and Jefferson Counties, Ohio



Stream SOH-TER-001,
Downstream Facing South (3/31/14)



Stream SOH-TER-001,
Upstream Facing North (3/31/14)



Stream SOH-TER-002,
Downstream Facing Southeast (3/31/14)



Stream SOH-TER-002,
Upstream Facing Northwest (3/31/14)



Stream SOH-TER-003,
Downstream Facing East (4/1/14)



Stream SOH-TER-003,
Upstream Facing West (4/1/13)

Wetland Delineation and Stream Identification Report
AEP, East Amsterdam – Miller Switch 138 kV Rebuild Project – Harrison and Jefferson Counties, Ohio



Stream SOH-TER-004,
Downstream Facing East (4/1/14)



Stream SOH-TER-004,
Upstream Facing West (4/1/14)



Stream SOH-TER-005,
Downstream Facing North (4/1/14)



Stream SOH-TER-005,
Upstream Facing West (4/1/14)



Stream SOH-TER-006,
Downstream Facing East (4/1/14)



Stream SOH-TER-006,
Upstream Facing West (4/1/14)

Wetland Delineation and Stream Identification Report
AEP, East Amsterdam – Miller Switch 138 kV Rebuild Project – Harrison and Jefferson Counties, Ohio



Stream SOH-TER-007,
Downstream Facing East (4/1/14)



Stream SOH-TER-007,
Upstream Facing West (4/1/14)



Stream SOH-TER-008,
Downstream Facing East (4/1/14)



Stream SOH-TER-008,
Upstream Facing West (4/1/14)



Stream SOH-TER-009,
Downstream Facing South (4/1/14)



Stream SOH-TER-009,
Upstream Facing North (4/1/14)

Wetland Delineation and Stream Identification Report
AEP, East Amsterdam – Miller Switch 138 kV Rebuild Project – Harrison and Jefferson Counties, Ohio



Stream SOH-TER-010,
Downstream Facing South (4/1/14)



Stream SOH-TER-010,
Upstream Facing North (4/1/14)



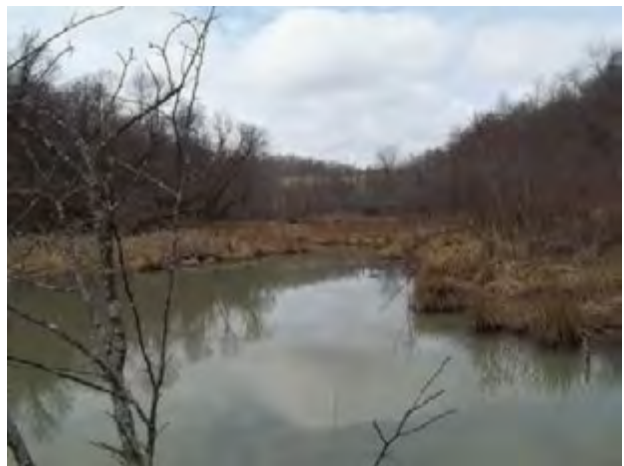
Stream SOH-TER-011,
Downstream Facing East (4/1/14)



Stream SOH-TER-011,
Upstream Facing West (4/1/14)



Stream SOH-TER-012,
Downstream Facing East (4/2/14)



Stream SOH-TER-012,
Upstream Facing West (4/2/14)

Wetland Delineation and Stream Identification Report
AEP, East Amsterdam – Miller Switch 138 kV Rebuild Project – Harrison and Jefferson Counties, Ohio



Stream SOH-TER-013,
Downstream Facing East (4/2/14)



Stream SOH-TER-013,
Upstream Facing West (4/2/14)



Stream SOH-TER-014,
Upstream Facing West (4/2/14)



Stream SOH-TER-014,
Downstream Facing East (4/2/14)



Stream SOH-TER-015,
Downstream Facing North (4/2/14)



Stream SOH-TER-015,
Upstream Facing South (4/2/14)

Wetland Delineation and Stream Identification Report
AEP, East Amsterdam – Miller Switch 138 kV Rebuild Project – Harrison and Jefferson Counties, Ohio



Stream SOH-TER-016,
Upstream Facing North (4/2/14)



Stream SOH-TER-016,
Downstream Facing South (4/2/14)



Stream SOH-TER-017,
Downstream Facing South (4/2/14)



Stream SOH-TER-017,
Upstream Facing North (4/2/14)



Stream SOH-TER-018,
Downstream Facing South (4/2/14)



Stream SOH-TER-018,
Upstream Facing North (4/2/14)

Wetland Delineation and Stream Identification Report
AEP, East Amsterdam – Miller Switch 138 kV Rebuild Project – Harrison and Jefferson Counties, Ohio



Stream SOH-TER-019,
Downstream Facing South (4/2/14)



Stream SOH-TER-019,
Upstream Facing North (4/2/14)



Stream SOH-TER-020,
Downstream Facing South (4/2/14)



Stream SOH-TER-020,
Upstream Facing North (4/2/14)



Stream SOH-TER-021,
Downstream Facing South (4/2/14)



Stream SOH-TER-021,
Upstream Facing North (4/2/14)

Wetland Delineation and Stream Identification Report
AEP, East Amsterdam – Miller Switch 138 kV Rebuild Project – Harrison and Jefferson Counties, Ohio



Stream SOH-TER-022,
Downstream Facing South (4/2/14)



Stream SOH-TER-022,
Upstream Facing North (4/2/14)



Stream SOH-TER-023,
Downstream Facing West (4/2/14)



Stream SOH-TER-023,
Upstream Facing East (4/2/14)



Stream SOH-TER-024,
Upstream Facing East (4/2/14)

Wetland Delineation and Stream Identification Report
AEP, East Amsterdam – Miller Switch 138 kV Rebuild Project – Harrison and Jefferson Counties, Ohio



Stream SOH-TER-025,
Downstream Facing West (4/2/14)



Stream SOH-TER-025,
Upstream Facing East (4/2/14)



Stream SOH-TER-026,
Upstream Facing East (4/2/14)



Stream SOH-TER-027,
Downstream Facing East (4/3/14)



Stream SOH-TER-028,
Downstream Facing South (4/3/14)



Stream SOH-TER-028,
Upstream Facing North (4/3/14)

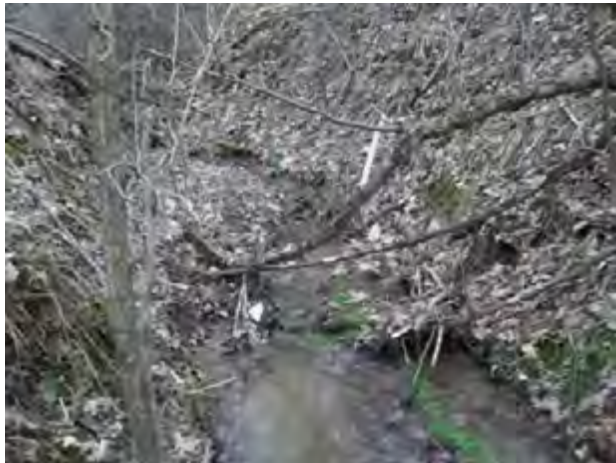
Wetland Delineation and Stream Identification Report
AEP, East Amsterdam – Miller Switch 138 kV Rebuild Project – Harrison and Jefferson Counties, Ohio



Stream SOH-TER-029,
Downstream Facing East (4/3/14)



Stream SOH-TER-030,
Facing South, flows east (4/3/14)



Stream SOH-TER-031,
Downstream Facing North (4/3/14)



Stream SOH-TER-031,
Upstream Facing South (4/3/14)



Stream SOH-TER-032,
Downstream Facing West (4/3/14)



Stream SOH-TER-032,
Upstream Facing East (4/3/14)

Wetland Delineation and Stream Identification Report
AEP, East Amsterdam – Miller Switch 138 kV Rebuild Project – Harrison and Jefferson Counties, Ohio



Wetland WOH-TER-001,
PSS, Facing North (3/31/14)



Wetland WOH-TER-002,
PEM, Facing North (4/1/14)



Wetland WOH-TER-003,
PEM, Facing South (4/1/14)



Wetland WOH-TER-004,
PEM, Facing North (4/1/14)



Wetland WOH-TER-005,
PEM, Facing West (4/1/14)



Wetland WOH-TER-006,
PEM, Facing West (4/1/14)

Wetland Delineation and Stream Identification Report
AEP, East Amsterdam – Miller Switch 138 kV Rebuild Project – Harrison and Jefferson Counties, Ohio



Wetland WOH-TER-007,
PEM, Facing South (4/2/14)



Wetland WOH-TER-008,
PEM, Facing North (4/2/14)



Wetland WOH-TER-009,
PEM, Facing West (4/2/14)



Wetland WOH-TER-010,
PEM, Facing West (4/2/14)



Wetland WOH-TER-010,
PFO, Facing East (4/2/14)



Wetland WOH-TER-011,
PEM, Facing West (5/7/14)

This foregoing document was electronically filed with the Public Utilities

Commission of Ohio Docketing Information System on

6/27/2014 12:30:57 PM

in

Case No(s). 14-0531-EL-BLN

Summary: Application In the Matter of the Letter of Notification for the East Amsterdam-Miller Switch 138 Kv Transmission Line Rebuild Project Part 4 of 4 electronically filed by Mr. Yazen Alami on behalf of AEP Ohio Transmission Company